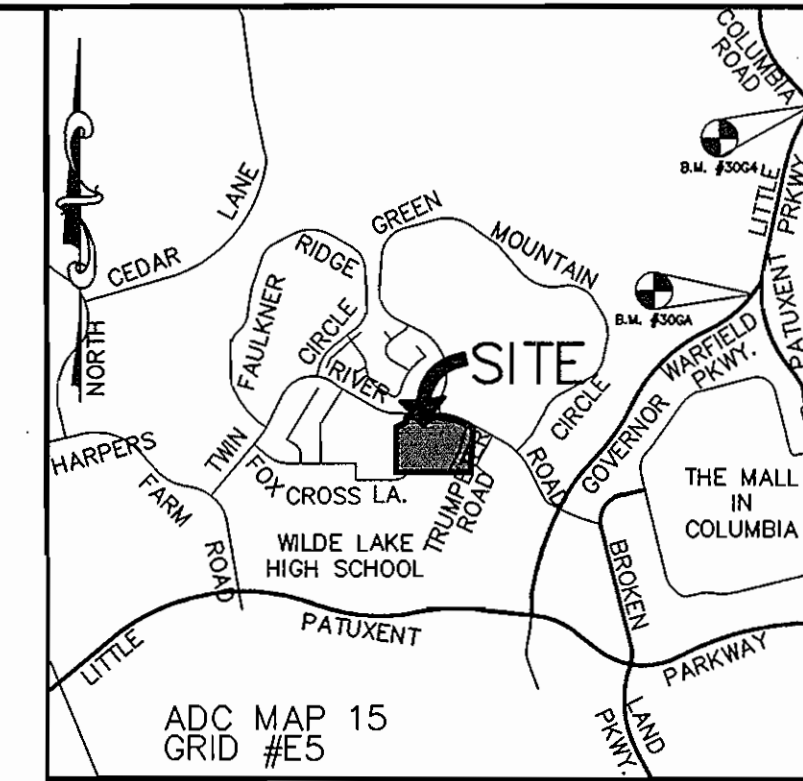


SHEET INDEX

1	TITLE SHEET
2	PLAN AND PROFILE OF WATER & SEWER MAINS

ON-SITE WATER & SEWER EXTENSION WILDE LAKE INTERFAITH CENTER PARCEL 272 5th ELECTION DISTRICT HOWARD COUNTY, MARYLAND CONTRACT NO. 24-4502-D



ADC MAP 15
GRID #E5
LOCATION MAP
SCALE: 1" = 2000'

BENCHMARKS

HOWARD COUNTY SURVEY CONTROL: 30G4
ELEVATION 103.614
N 566053.5772 E 1352177.5829
LOCATION IS JUST WEST OF THE
INTERSECTION OF GOVERNOR WARFIELD
PARKWAY & LITTLE PATUXENT PARKWAY.

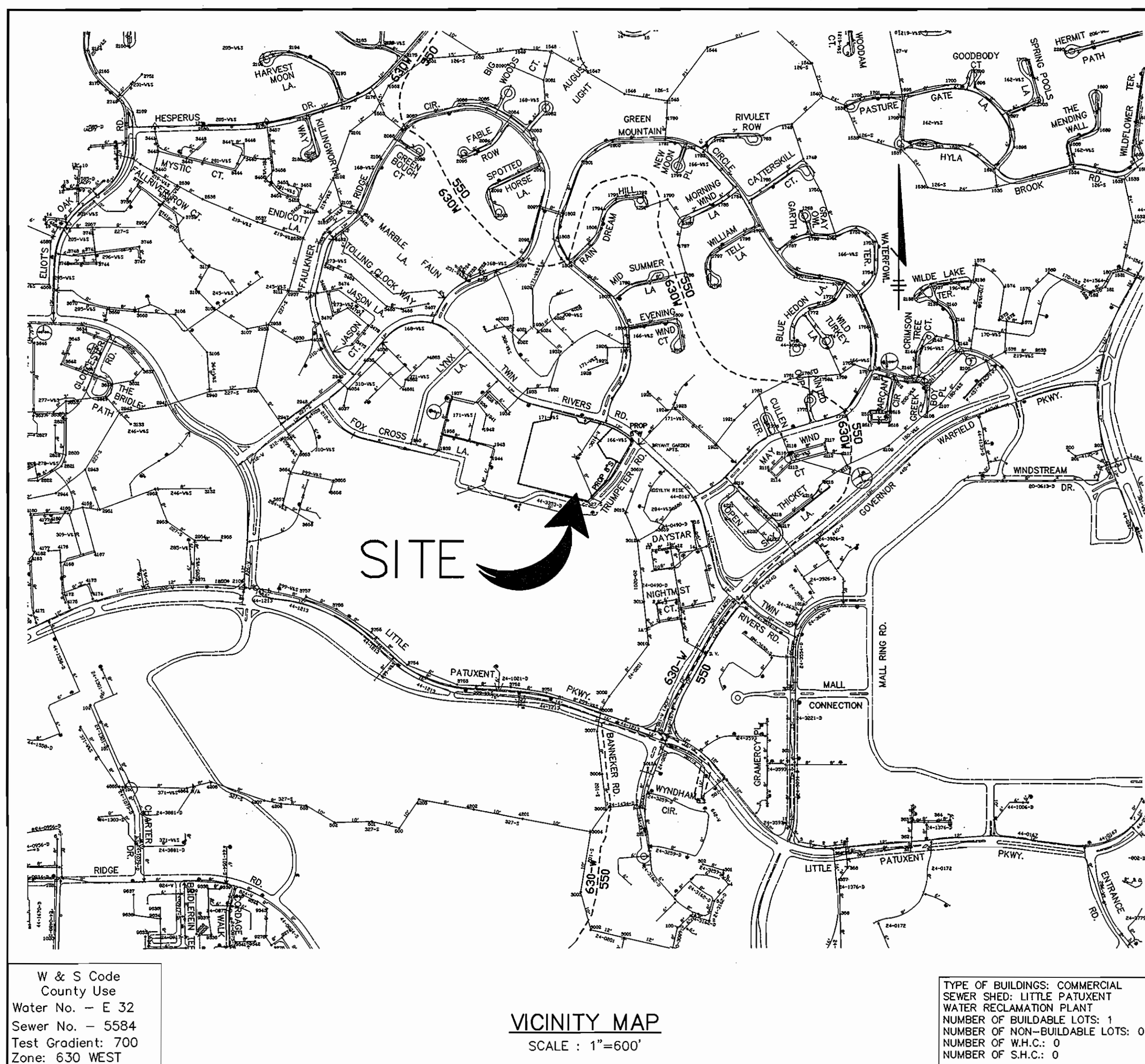
HOWARD COUNTY SURVEY CONTROL: 30G4
ELEVATION 360.308
N 567815.2187 E 1353271.2769
LOCATION IS AT THE INTERSECTION OF LITTLE
PATUXENT PARKWAY & COLUMBIA ROAD.

GENERAL NOTES

- Approximate location of existing mains are shown. The contractor shall take all necessary precautions to protect existing mains and services and maintain uninterrupted service. Any damage incurred shall be repaired immediately to the satisfaction of the Engineer at the Contractor's expense.
- Topographic field surveys were performed on JULY 18, 2006, by PATTON HARRIS RUST & ASSOCIATES.
- The coordinates shown on the drawings are based on Maryland State Reference System NAD '83/91 as projected by Howard County Geodetic Control Stations No. 361B and No. 42CA.
- All horizontal and vertical controls are based on NAVD 88.
- All pipe elevations shown are invert elevations unless otherwise noted on the plans.
- Clear all utilities by a minimum of 12 inches. Clear all poles by 5'-0" minimum or tunnel as required unless otherwise noted. The owner has contacted the utility companies and has made arrangements for bracing of poles as shown on the drawings. In the event the contractor's work requires the bracing of additional poles, any cost incurred by the owner for the bracing of additional poles or damages shall be deducted from monies owed the contractor. The contractor shall coordinate with the utility companies to schedule the bracing of the poles.
- For details not shown on the drawings, and for materials and construction methods, use Howard County Design Manual, Volume IV, Standard Specifications and Detail for Construction (Latest Edition). The contractor shall have a copy of Volume IV on the job.
- Where test pits have been made on existing utilities, they are noted by the symbol at the location of the test pit. A note or notes containing the results of the test pit or pits is included on the drawings. Existing utilities in the vicinity of the proposed work for which test pits have not been dug shall be located by the contractor two weeks in advance of construction operations at his own expense.
- The contractor shall notify the following utility companies or agencies at least five working days before starting work shown on these plans:
AT&T 1-800-252-1133
BGE (Contractor Services) 410-850-4620
BGE (Emergency) 410-685-1400
Bureau of Utilities 410-313-4900
Colonial Pipeline Co. 410-795-1390
Miss Utility 1-800-257-7777
State Highway Administration 410-531-5533
Verizon 1-800-743-0033 / 410-224-9210
- Trees and shrubs are to be protected from damage to the maximum extent. Trees and shrubs located within the construction strip are not to be removed or damaged by the contractor.
- The contractor shall remove trees, stumps and roots along the line of excavation. Payment for such removal shall be included in the unit price bid for construction of the main.
- The contractor shall notify the Bureau of Highways, Howard County, at 410-313-7450 at least five working days before open cutting or boring/jacking of any County road for laying water/sewer mains or house connections. The approval of these drawings will constitute compliance with DPW requirements per Section 18.11(c) of the Howard County Code.
- Contractor shall take necessary precautions and safety measures to guard against overhead lines that will interfere with excavating equipment during construction.
- No wetlands are present on site.

SEWER NOTES

- All sewer mains shall be D.I.P. and P.V.C. unless otherwise noted.
- All manholes shall be 4'-0" inside diameter unless otherwise noted.
- Force mains shall be D.I.P. only.
- Manholes shown with 12" and 16" walls are for brick manholes only.
- Manholes designated W.T. in plan and profile shall have watertight frame and covers, Standard Detail G5.52. Where watertight manhole frames and covers is used, set top of frame 1'-6" above finished grade unless otherwise noted on the drawings.
- House(s) with the symbol "C.N.S." indicates that cellar cannot be served



VICINITY MAP
SCALE: 1"=600'

TYPE OF BUILDINGS: COMMERCIAL
SEWER SHED: LITTLE PATUXENT
WATER RECLAMATION PLANT
NUMBER OF BUILDABLE LOTS: 1
NUMBER OF NON-BUILDABLE LOTS: 0
NUMBER OF W.H.C.: 0
NUMBER OF S.H.C.: 0

QUANTITIES

ITEMS	QUANTITIES ESTIMATED	AS-BUILT		
		QUANTITIES	TYPE	MANUFACTURER / SUPPLIER
6" WATER	6 LF			
12" x 6" TAPPING SLEEVE	1 EA.			
6" VALVE	1 EA.			
FIRE HYDRANT	1 EA.			
4" SAN.	1 LF			
8" SAN.	300 LF			
4" CAP	1 EA.			
SAN. MANHOLE	3 EA.			
TYPE B DROP CONNECTION	1 EA.			

NAME OF UTILITY CONTRACTOR :

Sediment control measures for this contract will be implemented in accordance with Section 219 of the Specifications and as shown on *SDR 07-12Z*

CHECKBOX
AS-BUILT DATE
SURVEY AND DRAFTING DIVISION

~~Review for Howard Soil Conservation District and meets technical requirements.~~

NATURAL RESOURCES CONSERVATION SERVICE DATE: *11/9/07*

OWNER:
WILDELAKE INTERFAITH RELIGIOUS CENTER, INC.
10431 TWIN RIVERS ROAD
COLUMBIA, MD 21044

DEVELOPER:
ST. JOHN'S UNITED CHURCH, INC.
ATTN: KEN REBECK
10431 TWIN RIVERS ROAD
COLUMBIA, MD 21044

W & S Code
County Use
Water No. - E 32
Sewer No. - 5584
Test Gradient: 700
Zone: 630 WEST

DEPARTMENT OF PUBLIC WORKS
HOWARD COUNTY, MARYLAND

DEPARTMENT OF PLANNING & ZONING
HOWARD COUNTY, MARYLAND

Patton Harris Rust & Associates, pc
Engineers, Surveyors, Planners, Landscape Architects.
3813 Centre Park Drive
Columbia, MD 21045
T 410.997.8900
F 410.997.9282

STATE OF MARYLAND
DOMENICO W. COLANGLIO #27200
PROFESSIONAL ENGINEER

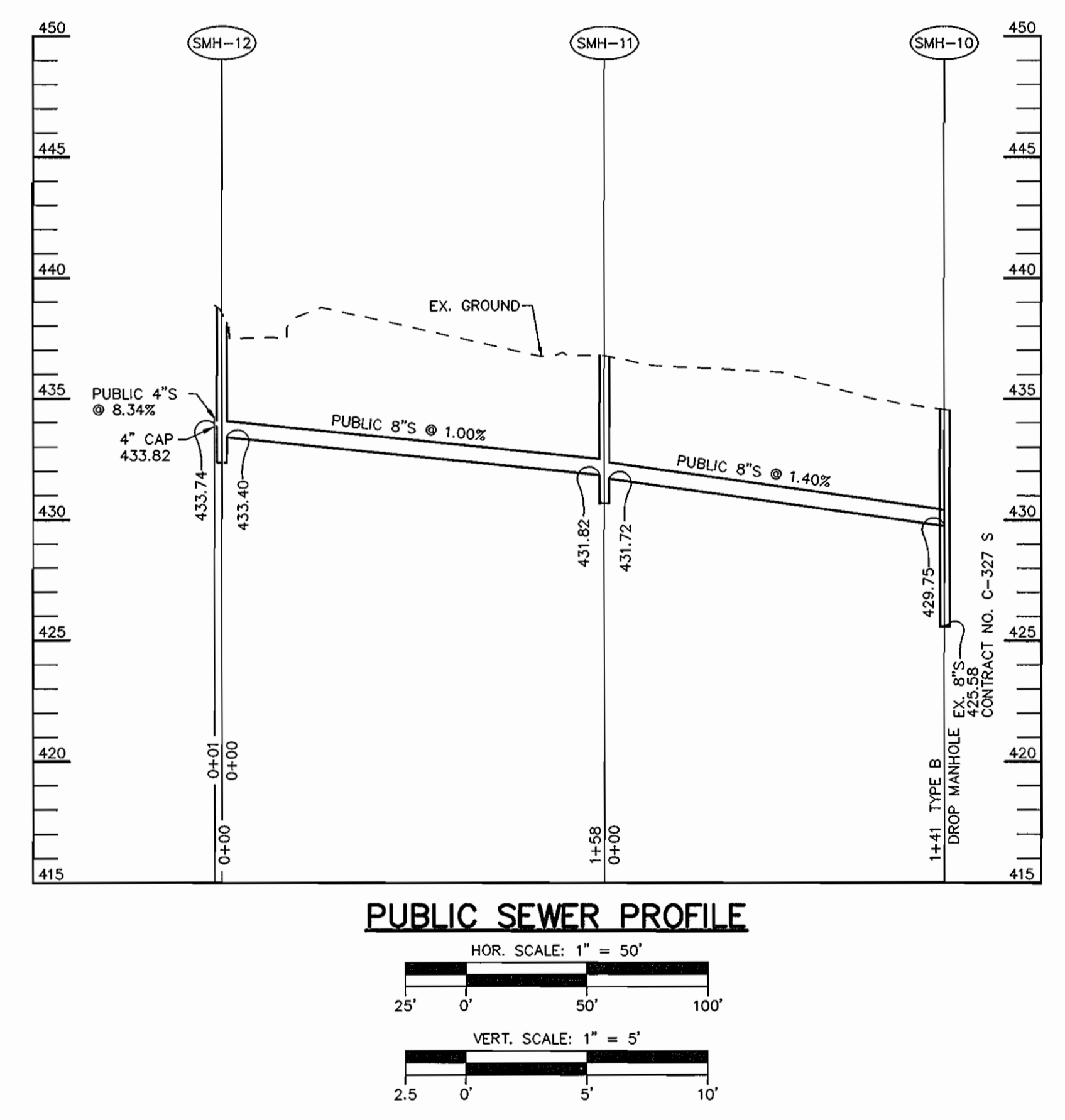
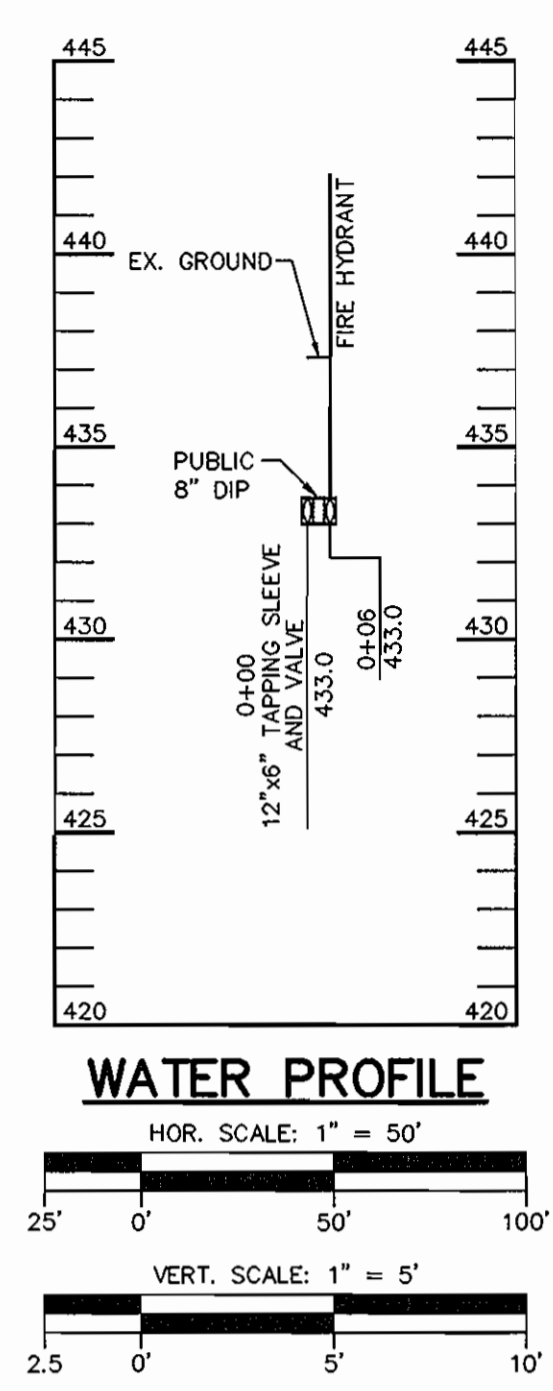
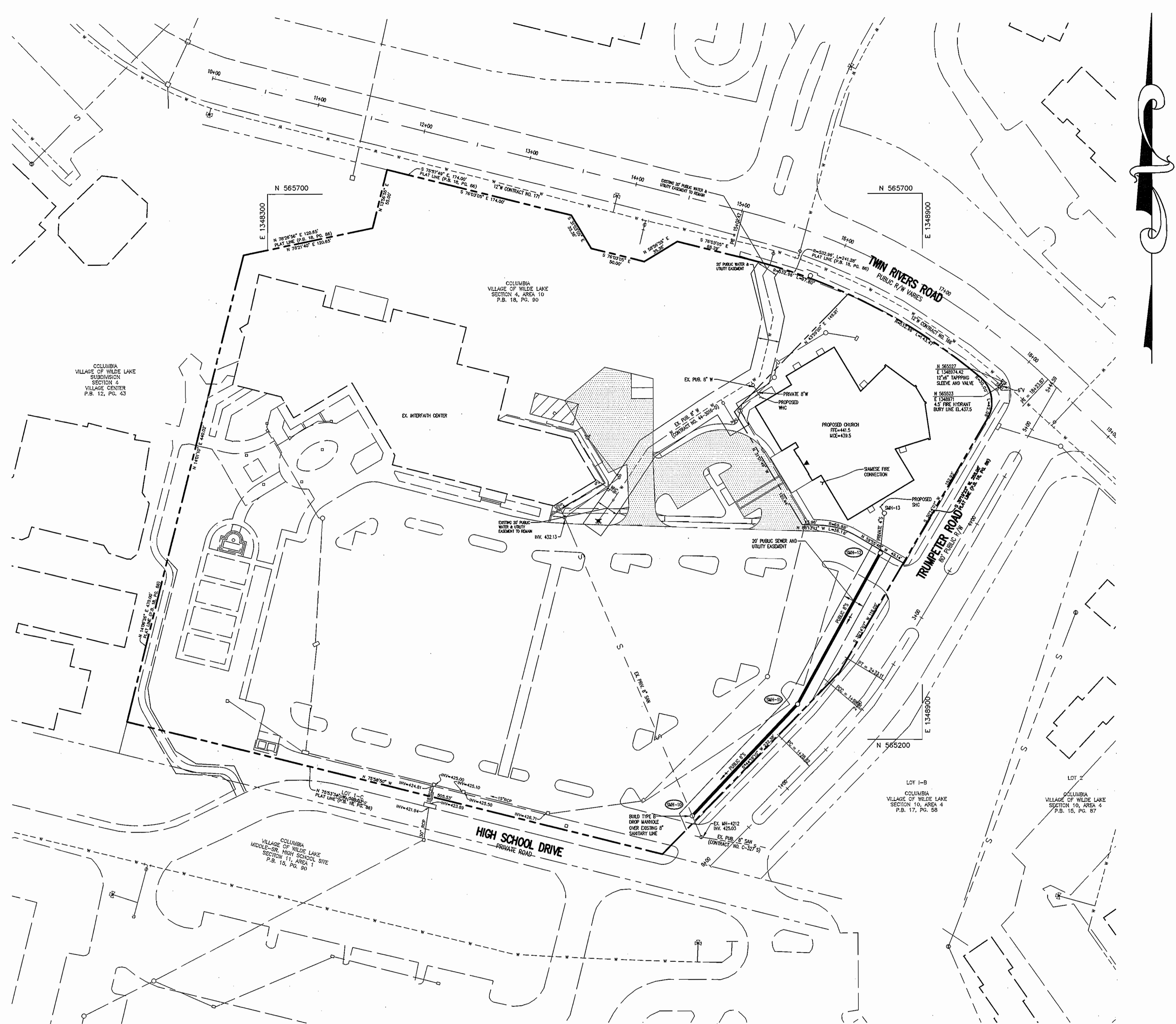
DES: DWC
DRN:
FILE:
DATE: 10/30/07

BY NO. REVISION DATE

600' SCALE MAP NO. 30 BLOCK NO. 272

WILDE LAKE INTERFAITH CENTER
PARCEL 272
5th ELECTION DISTRICT
HOWARD COUNTY, MARYLAND
CONTRACT NO. 24-4502-D

SCALE AS SHOWN
SHEET 1 OF 2



STRUCTURE SCHEDULE						
STRUCTURE	TYPE	LOCATION	INV. IN	INV. OUT	TOP	REMARKS
SMH-10	4'-0" DIA. TYPE B DROP MH	N 565130 E 1348689	429.75	425.58 (EX.)	434.5	HOCO STD. DETAIL S-2.11
SMH-11	4'-0" DIA.	N 565232 E 1348786	431.82	431.72	436.8	HOCO STD. DETAIL G-5.11
SMH-12	4'-0" DIA.	N 565371 E 1348862	433.50	433.40	439.0	HOCO STD. DETAIL G-5.11

PLAN
 SCALE: 1" = 50'

DEPARTMENT OF PUBLIC WORKS
 HOWARD COUNTY, MARYLAND
 Chief, Bureau of Utilities
 11/16/07

DEPARTMENT OF PLANNING & ZONING
 HOWARD COUNTY, MARYLAND
 Chief, Development Engineering Division
 11/16/07

Patton Harris Rust & Associates, PC
 Engineers, Surveyors, Planners, Landscape Architects
 PHRA
 8818 Centre Park Drive
 Columbia, MD 21045
 T 410.997.8900
 F 410.997.9282

10/30/07
 STATE OF MARYLAND
 DOMENICK W. COLANGELO #27200
 PROFESSIONAL ENGINEER

DES: DWC					
DRN:					
FILE:					
DATE: 10/30/07	BY:	NO.	REVISION	DATE	

PLAN AND PROFILE OF
 WATER AND SEWER MAINS
 600' SCALE MAP NO. 30 BLOCK NO. 272

WILDE LAKE INTERFAITH CENTER
 PARCEL 272
 5th ELECTION DISTRICT
 HOWARD COUNTY, MARYLAND
 CONTRACT NO. 24-4502-D

SCALE AS SHOWN
 SHEET 2 OF 2

P:\Projects\14465 - Wilde Lake\1-07\Plan\WNS2.dwg, 10/30/2007 1:05:49 PM