

NOTE: THIS ORIGINAL CONSTRUCTION PLAN, SHEET 2 OF 4 SUPERSEDES THE WATER & SEWER MAIN CONSTRUCTION PLAN PREVIOUSLY APPROVED AND SIGNED BY THE DEPARTMENT OF PLANNING AND ZONING ON JANUARY 19, 2010.

NOTE: ALL LOTS SHALL HAVE OUTSIDE METER SETTINGS. SEE GENERAL NOTES, PART B: WATER MAIN GENERAL NOTES, NOTE H.

NOTE: SEE SHEET 4 FOR MINIMUM CELLAR ELEVATION (M.C.E.) CHART

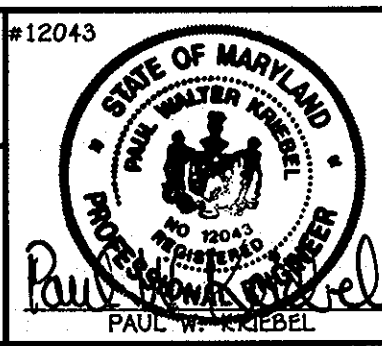
PLAN  
SCALE: 1" = 50'

CONTRACT NO. 24-4500-D  
GABRIEL'S COURTYARD  
LOTS 1 THRU 39, OPEN SPACE LOTS 40 & 41  
& NON-BUILDABLE BULK PARCEL 'A'  
WATER AND SEWER MAIN EXTENSIONS  
HOWARD COUNTY, MARYLAND

DEPARTMENT OF PUBLIC WORKS  
HOWARD COUNTY, MARYLAND  
DATE: 12/20/10

DEPARTMENT OF PLANNING AND ZONING  
HOWARD COUNTY, MARYLAND  
DATE: 1/19/11

I HEREBY CERTIFY THAT THESE DOCUMENTS WERE PREPARED OR APPROVED BY ME, AND THAT I AM A DAILY LICENSED PROFESSIONAL ENGINEER UNDER THE LAWS OF THE STATE OF MARYLAND. LICENSE NO. 12043 EXPIRATION DATE IS 7/18/12.  
**FISHER, COLLINS & CARTER, INC.**  
CIVIL ENGINEERING CONSULTANTS & LAND SURVEYORS  
CENTRAL SQUARE OFFICE PARK - 10272 BALTIMORE NATIONAL PIKE  
ELLSWORTH CITY, MARYLAND 21042  
(410) 481-3299

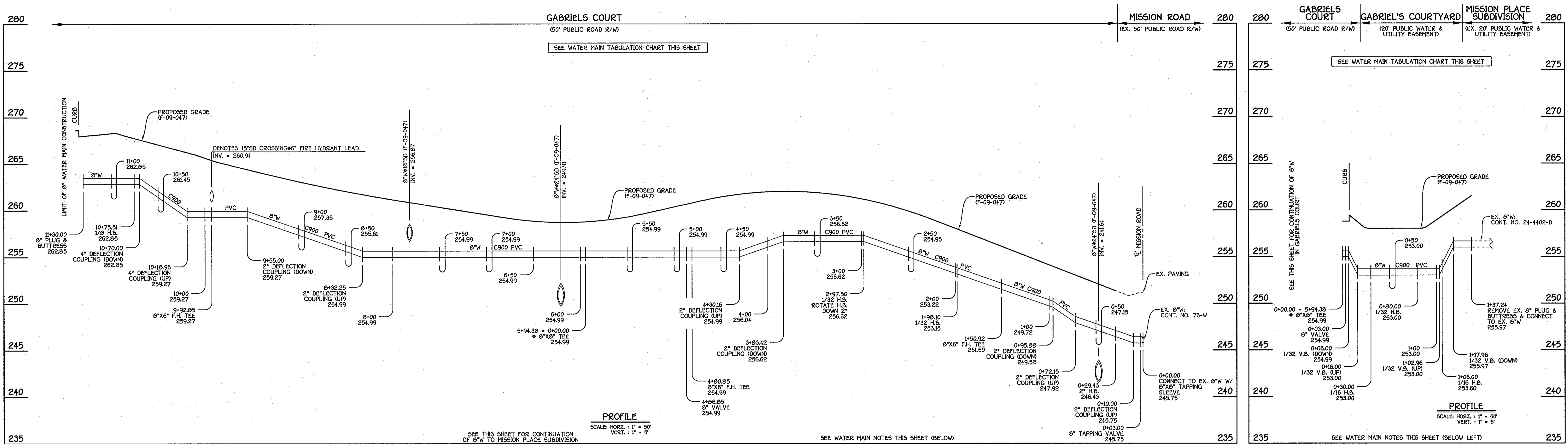


DESIGNED BY:	B.C.R.	DATE:	DECEMBER, 2010
DRAWN BY:	B.C.R.	DATE:	DECEMBER, 2010
CHECKED BY:	FOC	DATE:	7/18/11
DATE:	FOC	DATE:	7/18/11
DATE:	FOC	DATE:	4/6/11

WATER AND SEWER MAINS PLAN  
600' SCALE MAP NO. 43 BLOCK NO. 14  
F.C.C. WORK ORDER NO. 05096  
FILE NAME: WATER AND SEWER EXTENSION PLAN SHEET

GABRIEL'S COURTYARD  
LOTS 1 THRU 39, OPEN SPACE LOTS 40 & 41  
& NON-BUILDABLE BULK PARCEL 'A'  
WATER & SEWER MAIN EXTENSIONS  
CONTRACT NO. 24-4500-D  
SIXTH ELECTION DISTRICT  
HOWARD COUNTY, MARYLAND  
SCALE AS SHOWN  
SHEET 2 OF 4

I:\2008\06096.dwg, 06096-3001, Water And Sewer Base Plan (Redline Oct. 2010).dwg, 12/13/2010 3:45:24 PM



**8" WATER MAIN: GABRIELS COURT**

**8" WATER MAIN: TO MISSION PLACE SUBDIVISION**

- WATER MAIN NOTES:**
- EXCEPT FOR THE 8"X8" TAPPING SLEEVE & VALVE (WM STA. 0+00.00 TO WM STA. 0+03.00, AT MISSION ROAD), ALL WATER MAINS SHALL BE AWWA C900 PVC PIPE.
  - ALL PIPE BEDDING, TRACER WIRE, LOCATING TAPE AND OTHER APPURTENANCES SHALL BE IN ACCORDANCE WITH THE HOWARD COUNTY DESIGN MANUAL, VOLUME II - WATER AND SEWER STANDARDS FOR AWWA C900 PVC WATER PIPE INSTALLATION.
  - DEFLECTION COUPLINGS SHALL BE CERTAIN-TEED PVC HIGH DEFLECTION COUPLINGS.
  - ALL WATER HOUSE CONNECTIONS AND TAPS SHALL BE PERFORMED USING A SADDLE.

W.M. STA.	APPURTENANCE	NORTHING	EASTING
8" WATER MAIN: GABRIELS COURT			
0+00.00	8"X8" TAPPING SLEEVE	544878.85	1370232.47
0+03.00	8" TAPPING VALVE	544881.85	1370232.50
0+29.43	2" H.B.	544908.28	1370232.79
1+50.92	8"X6" F.H. TEE	545029.75	1370230.37
1+98.10	1/32 H.B.	545076.91	1370229.43
2+97.50	1/32 H.B.	545174.41	1370210.04
4+80.85	8"X6" F.H. TEE	545340.26	1370131.86
4+86.74	8" VALVE	545345.68	1370129.31
5+94.38	8"X8" TEE	545442.94	1370083.46
9+92.85	8"X6" F.H. TEE	545803.38	1369913.55
10+75.51	1/8 H.B.	545878.14	1369878.31
11+30.00	8" PLUG & BUTTRESS	545896.78	1369827.10

W.M. STA.	APPURTENANCE	NORTHING	EASTING
8" WATER MAIN: TO MISSION PLACE SUBDIVISION			
0+00.00	8"X8" TEE	545442.94	1370083.46
0+03.00	8" VALVE	545444.22	1370086.17
0+30.00	1/16 H.B.	545455.74	1370110.60
0+80.00	1/32 H.B.	545492.94	1370144.00
1+06.00	1/16 H.B.	545508.54	1370164.79
1+37.24	EX. 8" PLUG & BUTTRESS	545516.17	1370195.08

NOTE: THIS ORIGINAL CONSTRUCTION PLAN, SHEET 3 OF 4 SUPERSEDES THE WATER & SEWER MAIN CONSTRUCTION PLAN PREVIOUSLY APPROVED AND SIGNED BY THE DEPARTMENT OF PLANNING AND ZONING ON APRIL 20, 2011.

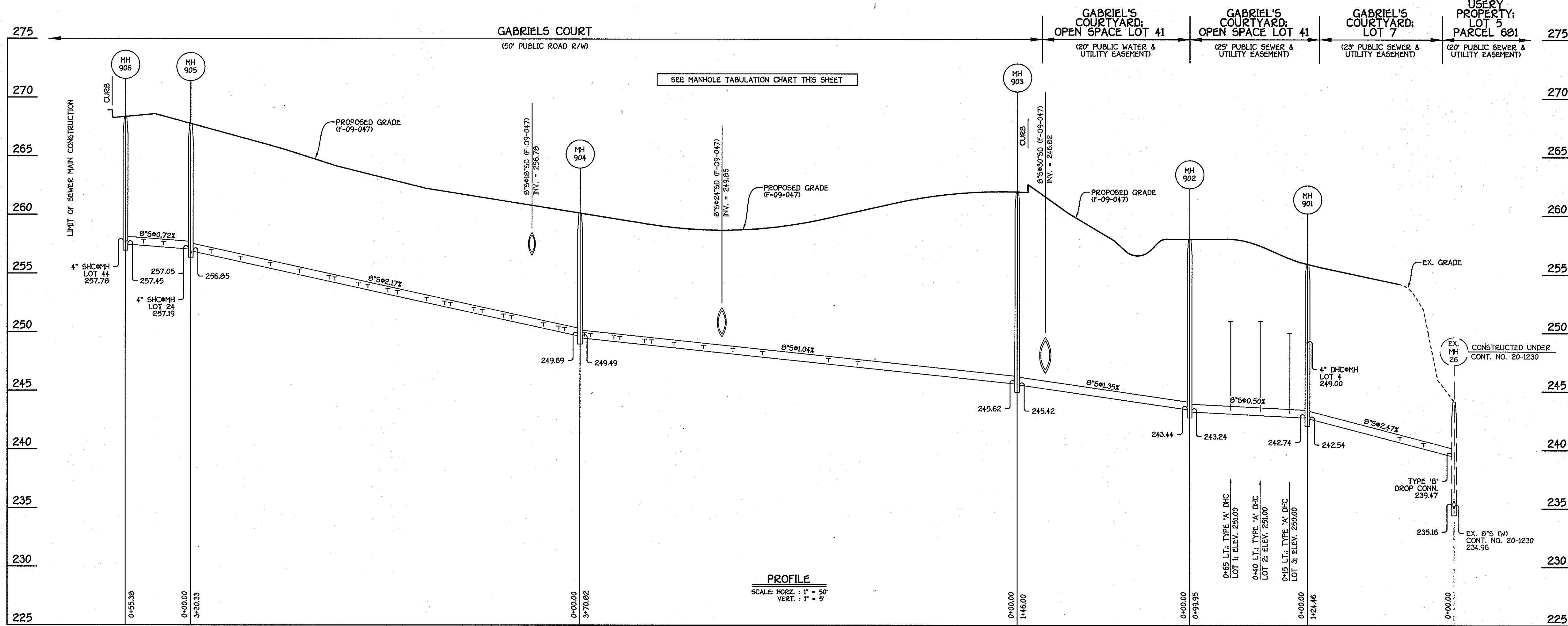
CONTRACT NO. 24-4500-D  
 GABRIEL'S COURTYARD  
 LOTS 1 THRU 39, OPEN SPACE LOTS 40 & 41  
 & NON-BUILDABLE BULK PARCEL 'A'  
 & NON-BUILDABLE BULK PARCEL 'A'  
 WATER & SEWER MAIN EXTENSIONS  
 HOWARD COUNTY, MARYLAND

DEPARTMENT OF PUBLIC WORKS HOWARD COUNTY, MARYLAND Chief, Bureau of Utilities 7/22/11	DEPARTMENT OF PLANNING AND ZONING HOWARD COUNTY, MARYLAND Chief, Development Engineering Division 8/1/11	I HEREBY CERTIFY THAT THESE DOCUMENTS WERE PREPARED OR APPROVED BY ME, AND THAT I AM A FULLY LICENSED PROFESSIONAL ENGINEER UNDER THE LAWS OF THE STATE OF MARYLAND. LICENSE NO. 12043 EXPIRATION DATE IS 7/7/2012. <b>FISHER, COLLINS &amp; CARTER, INC.</b> CIVIL ENGINEERING CONSULTANTS & LAND SURVEYORS CENTENNIAL SQUARE OFFICE PARK - 10272 BALTIMORE NATIONAL PIKE ELKROTT CITY, MARYLAND 21046 (410) 461-2299	12043 STATE OF MARYLAND PAUL W. KRIESEL DESIGNED BY: B.C.R. DRAWN BY: B.C.R. CHECKED BY: P.W.K. DATE: JULY, 2011	WATER MAINS PROFILES & CHARTS 600' SCALE MAP NO. 43 BLOCK NO. 14 F.C.C. WORK ORDER NO. 06096 FILE NAME: WATER AND SEWER EXTENSION PROFILE SHEET	GABRIEL'S COURTYARD LOTS 1 THRU 39, OPEN SPACE LOTS 40 & 41 & NON-BUILDABLE BULK PARCEL 'A' WATER & SEWER MAIN EXTENSIONS CONTRACT NO. 24-4500-D SIXTH ELECTION DISTRICT HOWARD COUNTY, MARYLAND SCALE AS SHOWN SHEET 3 OF 4
--	---	---	--	---	--

**\*M.C.E. CHART**

LOT	ELEVATION
1	255.80
2	255.80
3	254.80
4	253.84
5	251.49
6	251.83
7	245.68
8	246.94
9	252.38
10	252.72
11	252.90
12	253.24
13	253.42
14	253.79
15	253.97
16	254.63
17	255.40
18	256.04
19	256.59
20	257.14
21	257.60
22	258.23
23	258.71
24	261.87
25	261.11
26	260.65
27	260.03
28	259.56
29	258.94
30	258.48
31	257.86
32	256.90
33	256.31
34	255.81
35	255.17
36	254.72
37	254.01
38	253.79
39	253.51
42	262.97
43	262.61
44	263.26

\*M.C.E. DENOTES MINIMUM CELLAR ELEVATION



NOTE: THIS ORIGINAL CONSTRUCTION PLAN, SHEET 4 OF 4 SUPERSEDES THE WATER & SEWER MAIN CONSTRUCTION PLAN PREVIOUSLY APPROVED AND SIGNED BY THE DEPARTMENT OF PLANNING AND ZONING ON JUNE 19, 2010.

**8" SEWER MAIN: GABRIEL'S COURT TO 8" OUTFALL**

STATION	LOT	ELEVATION
EX. MH 26 TO MH 901		
0+26 LT.	8	242.14
0+46 LT.	7	240.98
• MH 901 LT.	4 (DHC)	249.34
MH 901 TO MH 902		
0+15 LT.	3 (DHC)	250.30
0+40 LT.	2 (DHC)	251.30
0+65 LT.	1 (DHC)	251.30
MH 903 TO MH 904		
1+35 LT.	5	247.67
1+60 LT.	6	247.93
2+16 LT.	9	248.52
2+41 LT.	10	248.78
2+66 LT.	11	249.04
2+91 LT.	12	249.30
3+10 RT.	39	249.65
3+16 LT.	13	249.56
3+37 RT.	38	249.93
3+42 LT.	14	249.83
3+62 RT.	37	250.19
3+67 LT.	15	250.09

STATION	LOT	ELEVATION
MH 904 TO MH 905		
0+13 RT.	36	250.78
0+18 LT.	16	250.73
0+31 RT.	35	251.17
0+58 LT.	17	251.60
0+65 RT.	34	251.91
0+83 LT.	18	252.14
0+90 RT.	33	252.45
1+10 LT.	19	252.73
1+15 RT.	32	253.00
1+30 LT.	20	253.16
1+55 LT.	21	253.70
1+63 RT.	31	254.04
1+80 LT.	22	254.25
1+88 RT.	30	254.58
2+08 LT.	23	254.85
2+13 RT.	29	255.12
2+38 RT.	28	255.66
2+63 RT.	27	256.21
2+88 RT.	26	256.75
3+13 RT.	25	257.29
• MH 906 RT.	24	257.83
MH 905 TO MH 906		
0+23 RT.	42	258.17
0+40 RT.	43	258.23
• MH 907 RT.	44	258.16

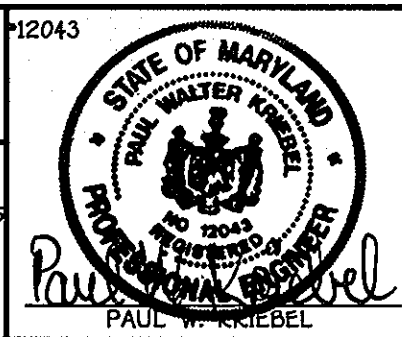
NO.	NORTHING	EASTING	RIM ELEVATION
901	545264.04	1369995.21	256.00 *
902	545173.68	1370037.92	258.00 *
903	545235.93	1370169.98	262.00 *
904	545571.35	1370011.87	260.14 *
905	545870.15	1369871.02	267.76 *
906	545889.09	1369818.98	268.33 *

NOTE: \*SET MH RIMS FLUSH W/PROPOSED GRADE.  
\*\*SET MH RIM FLUSH W/EXISTING PAVING OF MISSION ROAD.

DEPARTMENT OF PUBLIC WORKS  
HOWARD COUNTY, MARYLAND  
*John C. ...*  
7/22/11  
CHIEF, BUREAU OF UTILITIES

DEPARTMENT OF PLANNING AND ZONING  
HOWARD COUNTY, MARYLAND  
*John ...*  
DATE  
CHIEF, DEVELOPMENT ENGINEERING DIVISION

I HEREBY CERTIFY THAT THESE DOCUMENTS WERE PREPARED OR APPROVED BY ME, AND THAT I AM A DULY LICENSED PROFESSIONAL ENGINEER UNDER THE LAWS OF THE STATE OF MARYLAND. LICENSE NO. 12043 EXPIRATION DATE IS 7/25/12.  
**FISHER, COLLINS & CARTER, INC.**  
CIVIL ENGINEERING CONSULTANTS & LAND SURVEYORS  
CENTRAL SQUARE OFFICE PARK - 10272 BALTIMORE NATIONAL PIKE  
ELICOTT CITY, MARYLAND 21042  
(410) 461-2899



DESIGNED BY: B.C.R.  
DRAWN BY: B.C.R.  
CHECKED BY: P.W.K.  
DATE: JULY, 2011  
BY NO. REVISION DATE.

SEWER MAIN PROFILE & CHARTS  
600' SCALE MAP NO. 43, BLOCK NO. 14  
F.C.C. WORK ORDER NO. 06096  
FILE NAME: WATER AND SEWER EXTENSION PROFILE SHEET

GABRIEL'S COURTYARD  
LOTS 1 THRU 39, OPEN SPACE LOTS 40 & 41 & NON-BUILDABLE BULK PARCEL 'A'  
WATER & SEWER MAIN EXTENSIONS  
CONTRACT NO. 24-4500-D  
SIXTH ELECTION DISTRICT  
HOWARD COUNTY, MARYLAND

SCALE AS SHOWN  
SHEET 4 OF 4

I:\2006\06096\06096-3001 Water And Sewer Base Plan (Redline-3 - May, 2011).dwg, 7/5/2011, 3:34:22 PM