

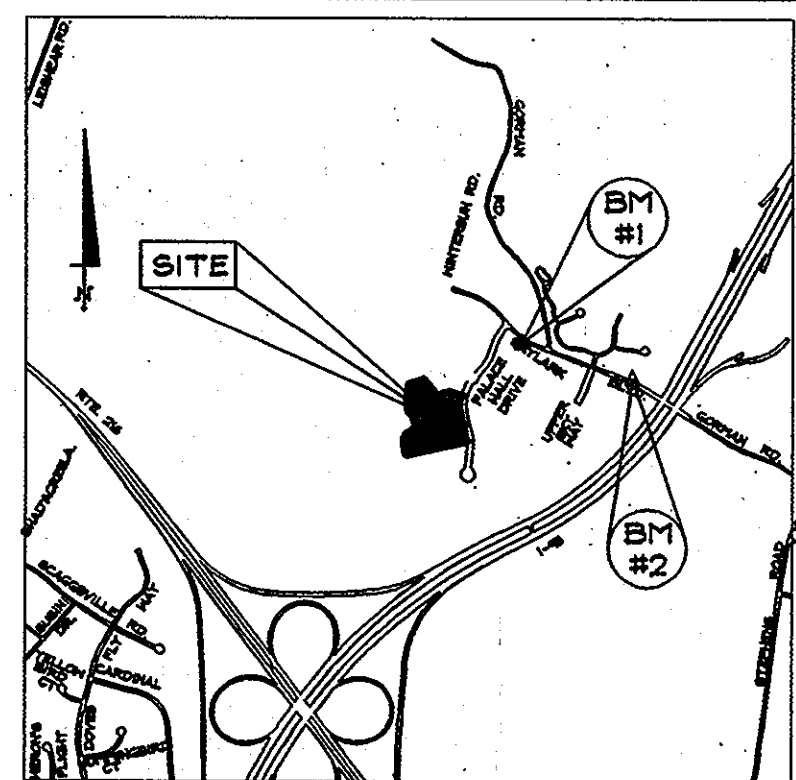
WATER HOUSE CONNECTIONS PARCEL D-3, AS BUILT

LOT NUMBER	MEASUREMENT 1	MEASUREMENT 2	MEASUREMENT 3
43	11.5' to Lot 43 WHC	5' to Lot 44 WHC	
44	5' to Lot 43 WHC	5.5' to Lot 44 WHC	
45	13' to Lot 45 SHC	7' to Lot 46 SHC	
46	13' to Lot 45 SHC	9' to Lot 46 SHC	
47	13' to Lot 47 SHC	9.5' to Lot 48 SHC	
48	12' to Lot 48 SHC	18' to Lot 49 SHC	99.5' to SMH-14
49	5.5' to Lot 49 SHC	33.5' to Fire Hydrant	41' to SMH-13
50	25.5' to SMH-14	40' to Lot 81 WHC	16.5' to Lot 50 SHC
51	14.5' to Lot 50 SHC	40' to Lot 79 SHC	6' to Lot 51 SHC
52	14' to Lot 51 SHC	41' to Lot 78 SHC	7' to Lot 52 SHC
53	41.5' to Lot 77 WHC	13.5' to Lot 53 SHC	4' to Lot 54 WHC
54	4' to Lot 53 WHC	41' to Lot 77 SHC	18.5' to Lot 54 SHC
55	6.5' to Lot 54 SHC	15.5' to Lot 55 SHC	51' to Lot 77 SHC
56	7' to Lot 55 SHC	15.5' to Lot 55 SHC	38.5' to Fire Hydrant
57	17' to Lot 56 SHC	5' to Lot 57 SHC	46.5' to Fire Hydrant
58	15' to Lot 58 SHC	33' to SMH-18	43' to Valve
59	11' to Lot 60 SHC	5.5' to Lot 59 SHC	31' to SMH-18
60	45.5' to SMH-18	9.5' to Lot 61 SHC	11' to Lot 60 SHC
61	18.5' to Lot 62 SHC	15' to Lot 61 SHC	67.5' to SMH-18
62	68' to SMH-17	19' to Lot 63 SHC	3' to Lot 62 SHC
63	48.5' to SMH-17	20.5' to Lot 64 SHC	3' to Lot 63 SHC
64	44' to Lot 65 WHC	4.5' to Lot 64 SHC	30.5' to SMH-17
65	35' to SMH-17	9' to Lot 65 SHC	44' to Lot 64 WHC
66	39' to SMH-17	23.5' to Lot 67 WHC	11' to Lot 66 SHC
67	13' to Lot 67 SHC	36.5' to SMH-16	23.5' to Lot 66 WHC
68	27' to SMH-16	6' to Lot 69 WHC	4' to Lot 68 SHC
69	27' to SMH-16	20.5' to Lot 69 SHC	6' to Lot 68 WHC
70	29' to SMH-16	6.5' to Lot 70 SHC	17' to Lot 71 SHC
71	18' to Lot 72 SHC	4.5' to Lot 71 SHC	39' to SMH-16
72	15' to Lot 73 SHC	4.5' to Lot 73 SHC	57' to SMH-16
73	17.5' to Lot 74 WHC	4.5' to Lot 73 SHC	74.5' to SMH-16
74	4.5' to Lot 74 WHC	17.5' to Lot 73 WHC	
75	4.5' to Lot 75 SHC	17.5' to Lot 74 SHC	85.5' to SMH-16
76	4' to Lot 76 SHC	62.5' to SMH-16	19.5' to Lot 76 SHC
77	17.5' to Lot 78 WHC	7' to Lot 77 SHC	41.5' to Lot 53 SHC
78	13' to Lot 78 SHC	17.5' to Lot 77 WHC	42' to Lot 52 SHC
79	13.5' to Lot 79 SHC	68.5' to SMH-14	7.5' to Lot 78 SHC
80	13.5' to Lot 80 SHC	51.5' to SMH-14	6.5' to Lot 79 SHC
81	14.5' to Lot 81 SHC	35' to SMH-14	6.5' to Lot 80 SHC
82	7' to Lot 82 SHC	21.5' to Lot 81 SHC	29.5' to SMH-14
83	8' to Lot 84 SHC	44' to SMH-13	13' to Lot 83 SHC
84	5.5' to Lot 85 WHC	31' to SMH-13	14' to Lot 84 SHC
85	29.5' to SMH-13	14' to Lot 85 SHC	5.5' to Lot 84 WHC
86	14' to Lot 86 SHC	37.5' to SMH-13	

FINAL WATER AND SEWER CONSTRUCTION PLANS

for
**EMERSON, SECTION 2, PHASE 3 AND 5B,
PARCEL D-3 & AA-1**

CONTRACT NUMBER 24-4493-D
6TH ELECTION DISTRICT HOWARD COUNTY, MD

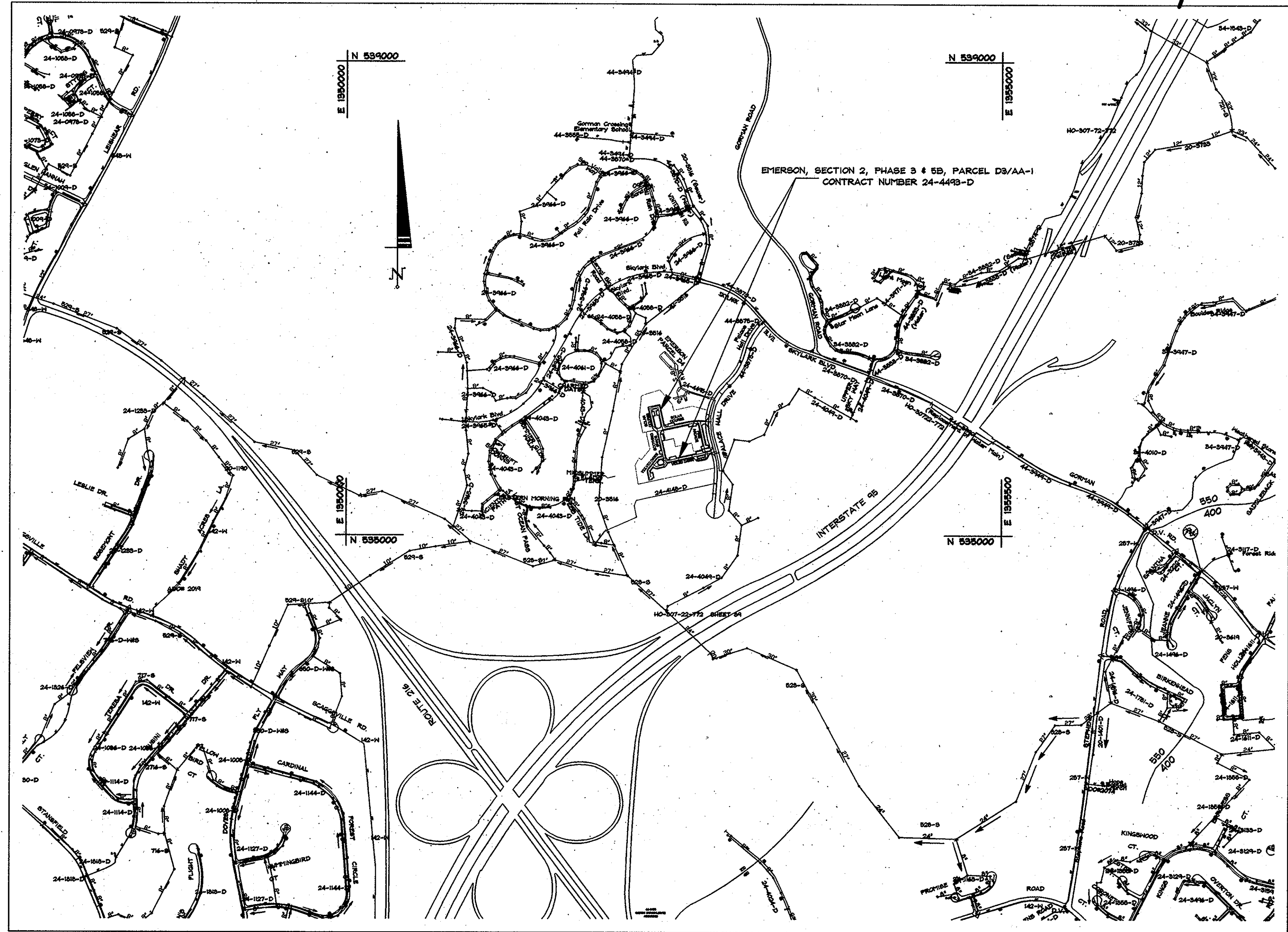


BENCHMARK	DESCRIPTION
BENCHMARK #1	N. 536615.0157 E. 1953679.1226 47DC ELEV. 349.249
BENCHMARK #2	N. 536212.7456 E. 1954833.6403 47EB ELEV. 354.226

VICINITY MAP
SCALE: 1"=200'

SEWER HOUSE CONNECTIONS PARCEL D-3, AS BUILT

LOT NUMBER	MEASUREMENT 1	MEASUREMENT 2	MEASUREMENT 3
43	11.5' to Lot 43 WHC	84.5' to SMH-1	
44	5.5' to Lot 44 WHC	21' to Lot 45 SHC	
45	21' to Lot 44 SHC	13' to Lot 45 WHC	
46	7' to Lot 45 WHC	13' to Lot 46 WHC	
47	9' to Lot 46 WHC	13' to Lot 47 WHC	
48	9.5' to Lot 47 WHC	12' to Lot 48 WHC	
49	18' to Lot 48 WHC	5.5' to Lot 49 WHC	86' to SMH-14
50	16.5' to Lot 50 WHC	41' to Lot 80 WHC	14.5' to Lot 51 WHC
51	6' to Lot 51 WHC	41' to Lot 79 WHC	14' to Lot 52 WHC
52	43' to Lot 78 SHC	7' to Lot 52 WHC	17.5' to Lot 53 SHC
53	17.5' to Lot 52 SHC	41.5' to Lot 77 WHC	13.5' to Lot 53 SHC
54	6.5' to Lot 55 WHC	18.5' to Lot 59 WHC	47.5' to Lot 77 SHC
55	15.5' to Lot 55 WHC	63.5' to Fire Hydrant	7' to Lot 56 WHC
56	15.5' to Lot 56 WHC	17' to Lot 57 WHC	51.5' to Fire Hydrant
57	5' to Lot 57 WHC	31' to SMH-15	46' to Fire Hydrant
58	13' to Lot 59 SHC	15' to Lot 58 WHC	28.5' to SMH-18
59	5.5' to Lot 59 WHC	13' to Lot 58 SHC	29.5' to SMH-18
60	11' to Lot 60 WHC	38' to SMH-18	11' to Lot 59 WHC
61	15' to Lot 61 WHC	34' to SMH-18	9.5' to Lot 60 WHC
62	3' to Lot 62 WHC	18.5' to Lot 61 WHC	83' to SMH-18
63	51.5' to SMH-17	3' to Lot 63 WHC	19' to Lot 62 WHC
64	4.5' to Lot 64 WHC	33.5' to SMH-17	20.5' to Lot 63 WHC
65	31' to SMH-17	13' to Lot 66 SHC	9' to Lot 65 WHC
66	13' to Lot 65 SHC	28.5' to SMH-17	11' to Lot 66 WHC
67	33.5' to SMH-16	17' to Lot 68 SHC	5.5' to Lot 67 WHC
68	27.5' to SMH-16	4' to Lot 68 WHC	17' to Lot 67 SHC
69	27' to Lot 70 SHC	39' to SMH-16	20.5' to Lot 69 WHC
70	27.5' to SMH-16	6.5' to Lot 70 WHC	27' to Lot 69 SHC
71	4.5' to Lot 71 WHC	36' to SMH-16	17' to Lot 70 WHC
72	4.5' to Lot 72 WHC	53' to SMH-16	18' to Lot 71 WHC
73	4.5' to Lot 73 WHC	15' to Lot 72 WHC	70.5' to SMH-16
74	17.5' to Lot 75 WHC	4.5' to Lot 74 WHC	
75	19.5' to Lot 76 WHC	4.5' to Lot 75 WHC	81' to SMH-15
76	20' to Fire Hydrant	59' to SMH-15	4' to Lot 76 WHC
77	7' to Lot 77 WHC	41.5' to Lot 53 SHC	47.5' to Lot 54 SHC
78	7.5' to Lot 79 WHC	43' to Lot 52 SHC	13' to Lot 78 WHC
79	56.5' to SMH-14	6.5' to Lot 80 WHC	13.5' to Lot 79 WHC
80	6.5' to Lot 81 WHC	39.5' to SMH-14	13.5' to Lot 80 WHC
81	21.5' to Lot 82 WHC	28' to SMH-14	14.5' to Lot 81 WHC
82	20' to Lot 83 SHC	7' to Lot 82 WHC	33.5' to SMH-14
83	13' to Lot 83 WHC	46.5' to SMH-14	20' to Lot 82 SHC
84	14' to Lot 84 WHC	39.5' to SMH-13	8' to Lot 83 WHC
85	6.5' to Lot 86 SHC	28.5' to SMH-13	14' to Lot 85 WHC
86	14' to Lot 86 WHC	30' to SMH-13	6.5' to Lot 85 SHC



GENERAL NOTES

- Approximate locations of existing mains are shown. The contractor shall take all necessary precautions to protect existing mains and services and maintain uninterrupted service. Any damage incurred shall be repaired immediately to the satisfaction of the Engineer at the contractor's expense.
- Topographic field surveys were performed on March, 2006 by Demario Design Consultants, Inc.
- The coordinates shown on the drawings are based on Maryland State Reference System NAD '83/91' as projected by Howard County Geodetic Control Stations No. 47DC & 47EB.
- All vertical controls are based on NAVD '88.
- All pipe elevations shown are invert elevations unless otherwise noted on the plans.
- Clear all utilities by a minimum of 12 inches. Clear all poles by 5' - 0" minimum or tunnel as required unless otherwise noted. The owner has contacted the utility companies and has made arrangements for bracing of poles as shown on the drawings. In the event the contractor's work requires the bracing of additional poles, any cost incurred by the owner for the bracing of additional poles or damages shall be deducted from monies owed by the contractor. The contractor shall coordinate with the utility companies to schedule the bracing of the poles.
- For details not shown on the drawing, and for materials and construction methods, use Howard County Design Manual, Volume IV, Standard specifications and Details for Construction (Latest Edition). The contractor shall have a copy of Volume IV on the job.
- Where test pits have been made on existing utilities they are noted by the symbol at the locations of the test pits. A note or notes containing the results of the test pit or pits included on the drawings. Existing utilities in the vicinity of the proposed work for which test pits have not been dug shall be located by the contractor two weeks in advance of construction operations at his own expense.
- The contractor shall notify the following utility companies or agencies at least five working days before starting work shown on these plans:
 - AT & T: 1-800-252-1133
 - BGE (Construction Services): 410-850-4620
 - BGE (Emergency): 410-685-1400
 - Bureau of Utilities: 410-313-4900
 - Colonial Pipeline Company: 410-795-1390
 - Miss Utility: 1-800-257-7777
 - State Highway Administration: 410-531-5533
 - Verizon: 1-800-743-0033/410-224-9210
- Trees and shrubs are to be protected from damage to the maximum extent. Trees and shrubs located within the construction strip are not to be removed or damaged by the contractor.
- The contractor shall remove trees, stumps, and roots along the line of excavation. Payment for such removal shall be included in the unit price bid for construction of the main.
- The contractor shall notify the Bureau of Highways, Howard County, at (410)-313-7450 at least five working days before open cutting or boring/jacking of any County road for laying water/sewer mains or house connections. The approval of these drawings will constitute compliance with DPW requirements per section 18.114(a) of the Howard County Code.

WATER GENERAL NOTES

- All water mains to be D.I.P. Class 54 unless otherwise noted.
- Tops of all water mains to have a minimum of 3' - 6' of cover unless otherwise noted.
- Valves adjacent to tees shall be strapped to tees.
- All fittings shall be buttressed or anchored with concrete in accordance with the Standard Details unless provided on the drawings.
- Fire hydrants shall be set to the bury line elevations shown on the drawings. All fire hydrants shall be restrained and buttressed with concrete in accordance with the Standard Details. The soil around the fire hydrant shall be compacted in accordance with Section 1000 and 1005 of the Standard Specifications.
- The contractor shall not operate any water main valves on the existing water system.
- All water house connections shall a 1" connection with a 3/4" inside meter.

SEWER GENERAL NOTES

- All sewer mains shall be DIP or P.V.C unless otherwise noted.
- All manholes shall be 4' - 0" inside diameter unless otherwise noted.
- Force mains shall be D.I.P. only.
- Manholes shown with 12" and 16" walls are for brick manholes only.
- Manholes designated N.T. in plan and profile shall have watertight frames and covers. Standard Detail G5.52. Where watertight frame and cover is used, set top of frame 1" - 6" above finished grade unless otherwise noted on the drawings.
- House(s) with the symbol "C.N.S." indicates that cellar cannot be served.

SHEET INDEX

NO.	DESCRIPTION
1	COVER SHEET
2	WATER AND SEWER PLAN
3	SEWER LINE PROFILES
4	WATER LINE PROFILES

OWNER/DEVELOPER:
EMERSON LAND
BUSINESS TRUST
10275 LITTLE PATUXENT PKWY
COLUMBIA, MD 21044
410-992-6000

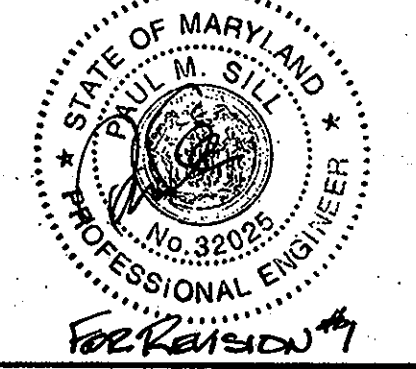
SEDIMENT CONTROL MEASURES FOR THIS CONTRACT WILL BE IMPLEMENTED IN ACCORDANCE WITH SECTION 219 OF THE SPECIFICATIONS AND AS SHOWN ON F-07-182.

THIS PLAN IS APPROVED FOR SOIL EROSION AND SEDIMENT CONTROL BY THE HOWARD SOIL CONSERVATION DISTRICT.

John K. Robertson 5/22/08
HOWARD SOIL CONSERVATION DISTRICT DATE

WATER AND SEWER CODES
WATER NO.: E-15
SEWER NO.: 739000
TEST GRADIENT: 700
ZONE: 550

LOCATION PLAN
SCALE: 1"=600'



AS BUILT
DATE: SEPTEMBER 17, 2010

TYPE OF BUILDING: RESIDENTIAL
DRAINAGE AREA: LITTLE PATUXENT
TREATMENT PLANT: LITTLE PATUXENT
WASTE WATER RECLAMATION PLANT
NUMBER OF BUILDABLE LOTS: 86
NUMBER OF SHC: 86
NUMBER OF WHC: 86

NAME OF UTILITY CONTRACTOR: W.F. WILSON & SONS, INC.
SURVEY AND DRAFTING DIVISION AS-BUILT DATE: SEPTEMBER 17, 2010

ITEMS	QUANTITIES ESTIMATED	QUANTITIES		
		QUANTITIES	TYPE	AS-BUILT SUPPLIER
8" SEWER MAIN	2036	2,010	PVC	JMEAGLE/BELAIR RD SUPPLY
SEWER MANHOLE	18	18	PRECAST	ATLANTIC CONC. PRODUCTS
SEWER MANHOLE (wat. ft.)	203	194.2	PRECAST	JMEAGLE/BELAIR RD SUPPLY
4" SHC	1167	1,181	SDR-35 PVC	JMEAGLE/BELAIR RD SUPPLY
4" DHC TYPE A	271	544	PRECAST	PRISM PRECAST PRODUCTS, INC.
4" DHC TYPE B	286			
6" TWIN SHC	56	60	SDR-35 PVC	JMEAGLE/BELAIR RD SUPPLY
6" WATER MAIN	1487	1,411	CL 54 DTP	U.S. PIPE
6" WATER MAIN	672	791	CL 54 DTP	U.S. PIPE
8x6 TEE	7	0	MJ COMPACT	TYLER UNION/LB WATER SER.
8x6 TEE	7	0	MJ COMPACT	TYLER UNION/LB WATER SER.
FIRE HYDRANT	4	4	5 1/2"	TYLER UNION/LB WATER SER.
1" WHC	1523	1,541	COPPER	TYLER UNION/LB WATER SER.
1 1/2" TWIN WHC	53			
6" VALVE		8	GATE	KENNEDY VALVE/LB WATER
8" VALVE		3	GATE	KENNEDY VALVE/LB WATER

DEPARTMENT OF PUBLIC WORKS
HOWARD COUNTY, MARYLAND

John C. Coon
CHIEF, BUREAU OF UTILITIES DATE

DEPARTMENT OF PLANNING AND ZONING
HOWARD COUNTY, MARYLAND

Susana
CHIEF, DEVELOPMENT ENGINEERING DIVISION DATE

DeMario Design Consultants, Inc.
192 East Main Street,
Westminster, MD 21157
Phone: (410) 385-0593
Fax: (410) 385-0594
eMail: ddc@demariodesign.us

Professional Certification:
I hereby certify that these documents were prepared or approved by me, and that I am a duly licensed Professional Engineer under the laws of the State of Maryland, License No. 25420, Expiration Date: 7.20.08.

DES. BY: LJC
DRN. BY: SDS
CHK. BY: JCO
JOB#: 06128.1
DATE: 07-16-07

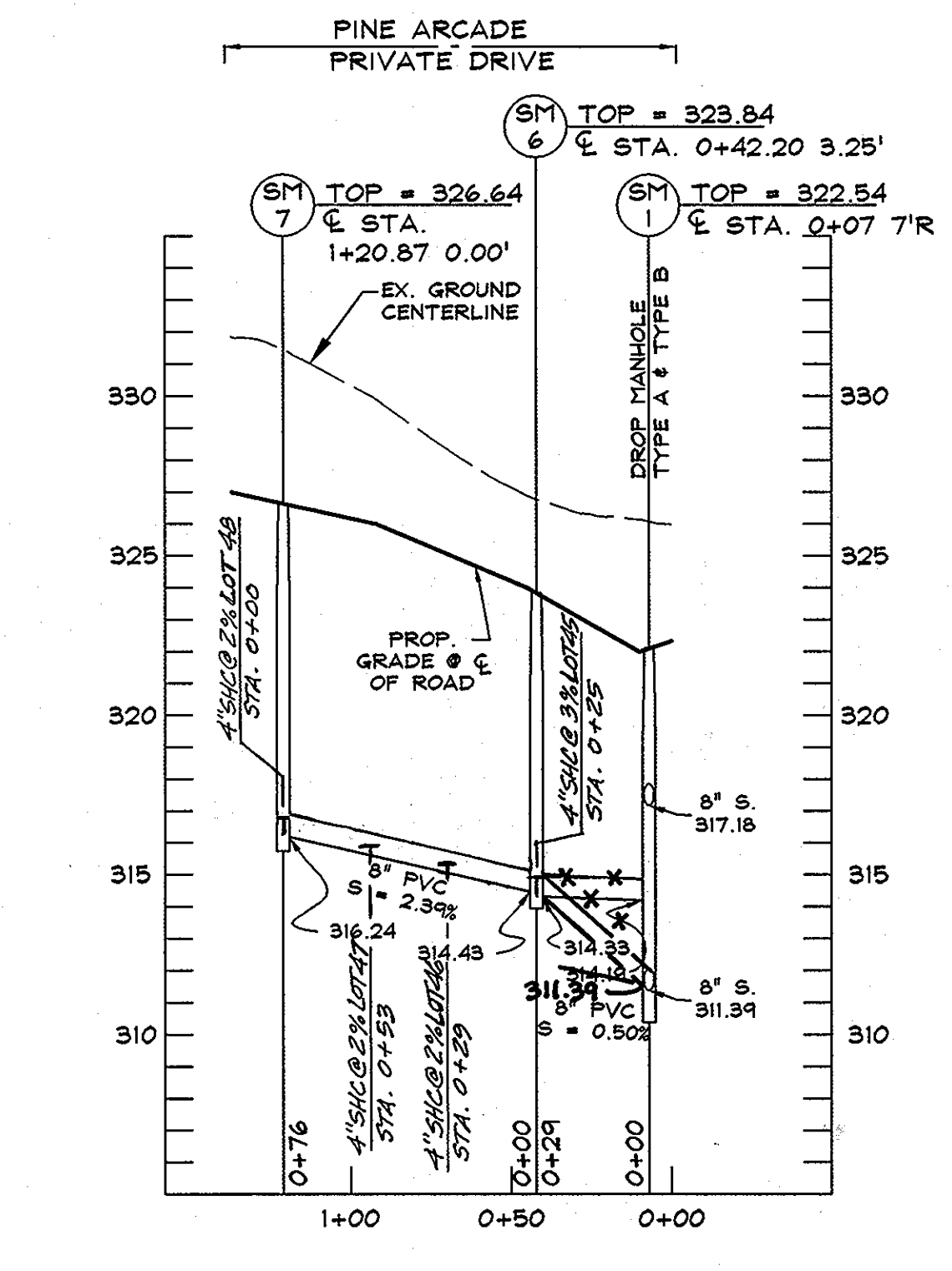
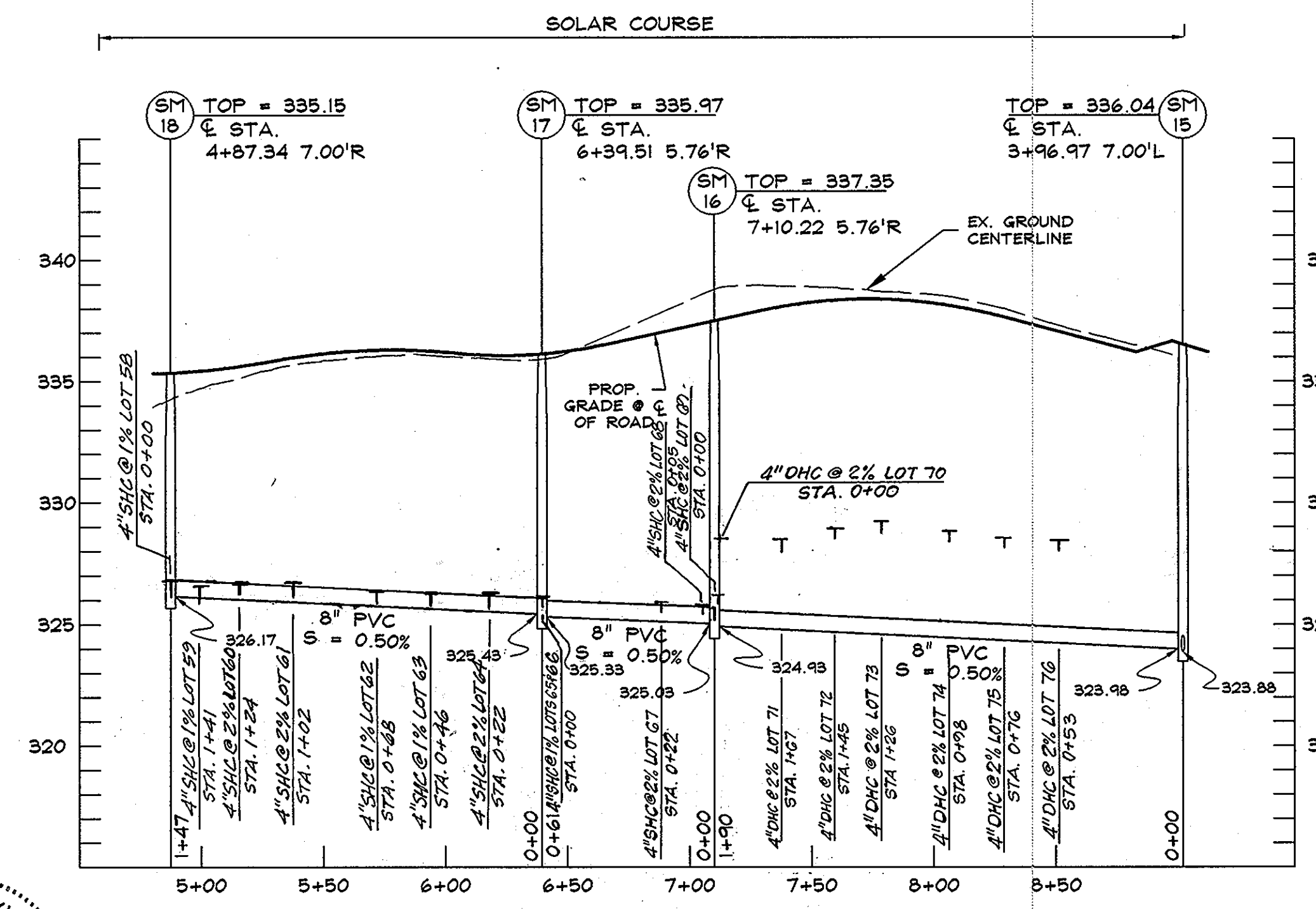
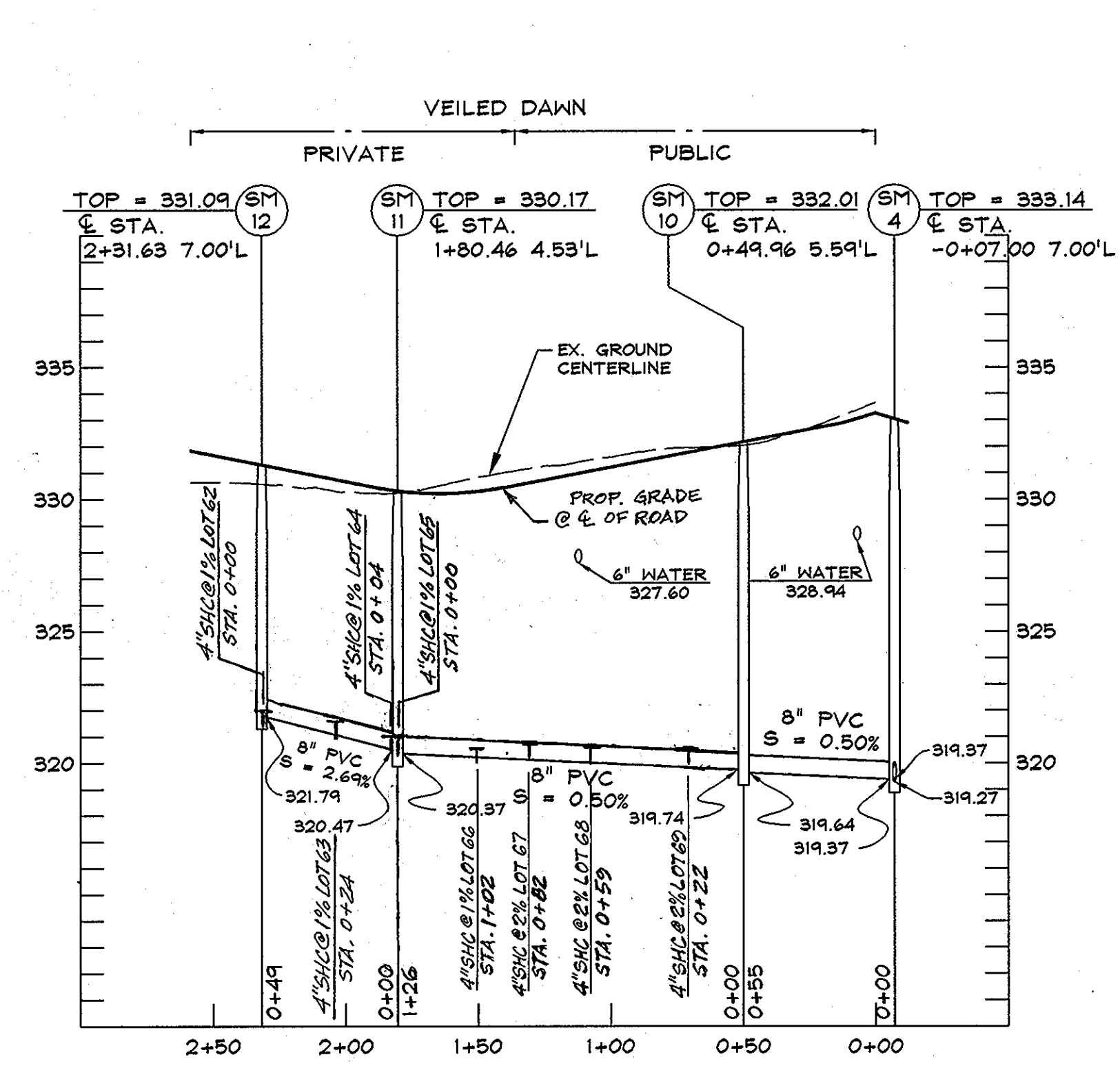
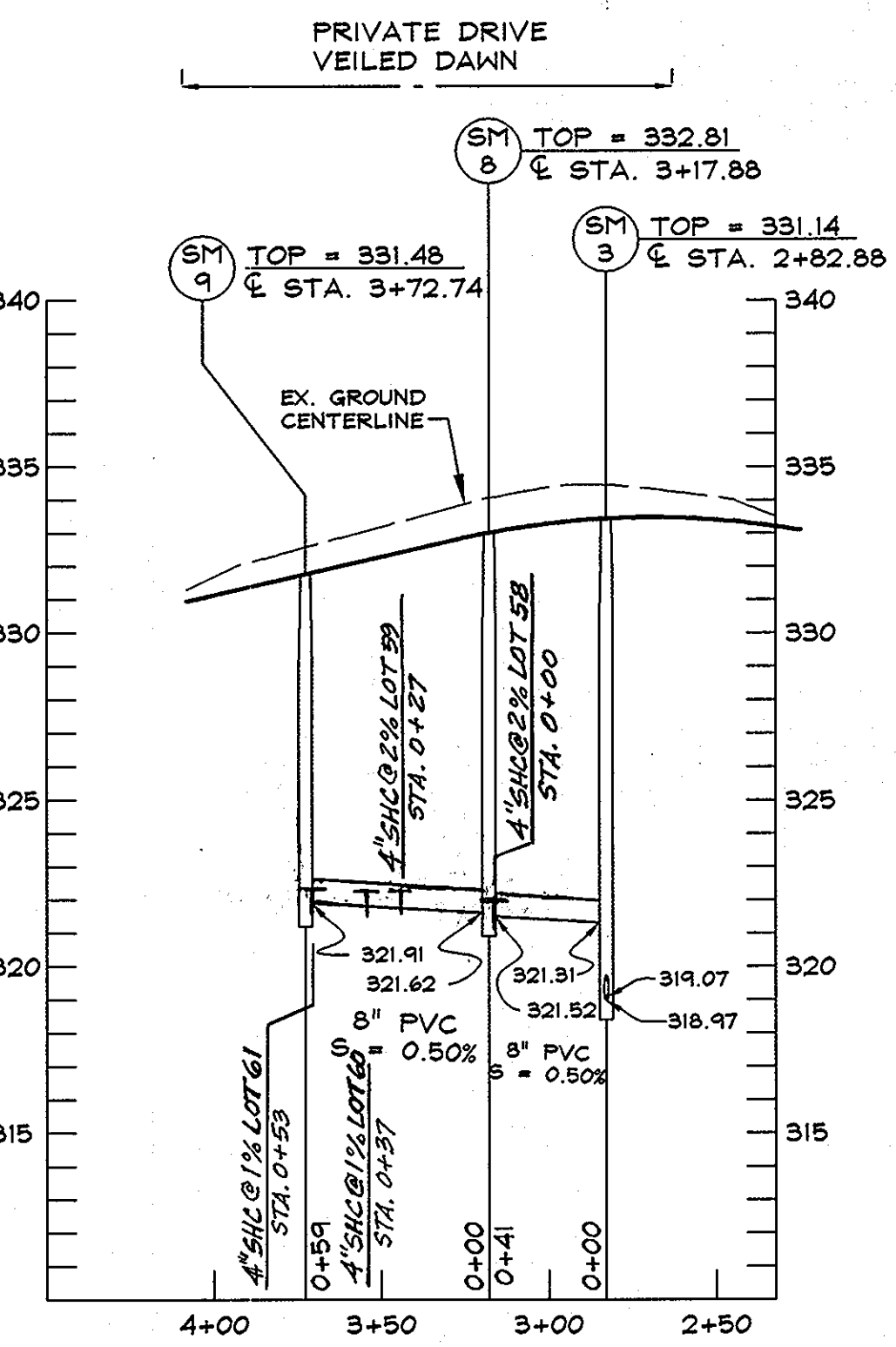
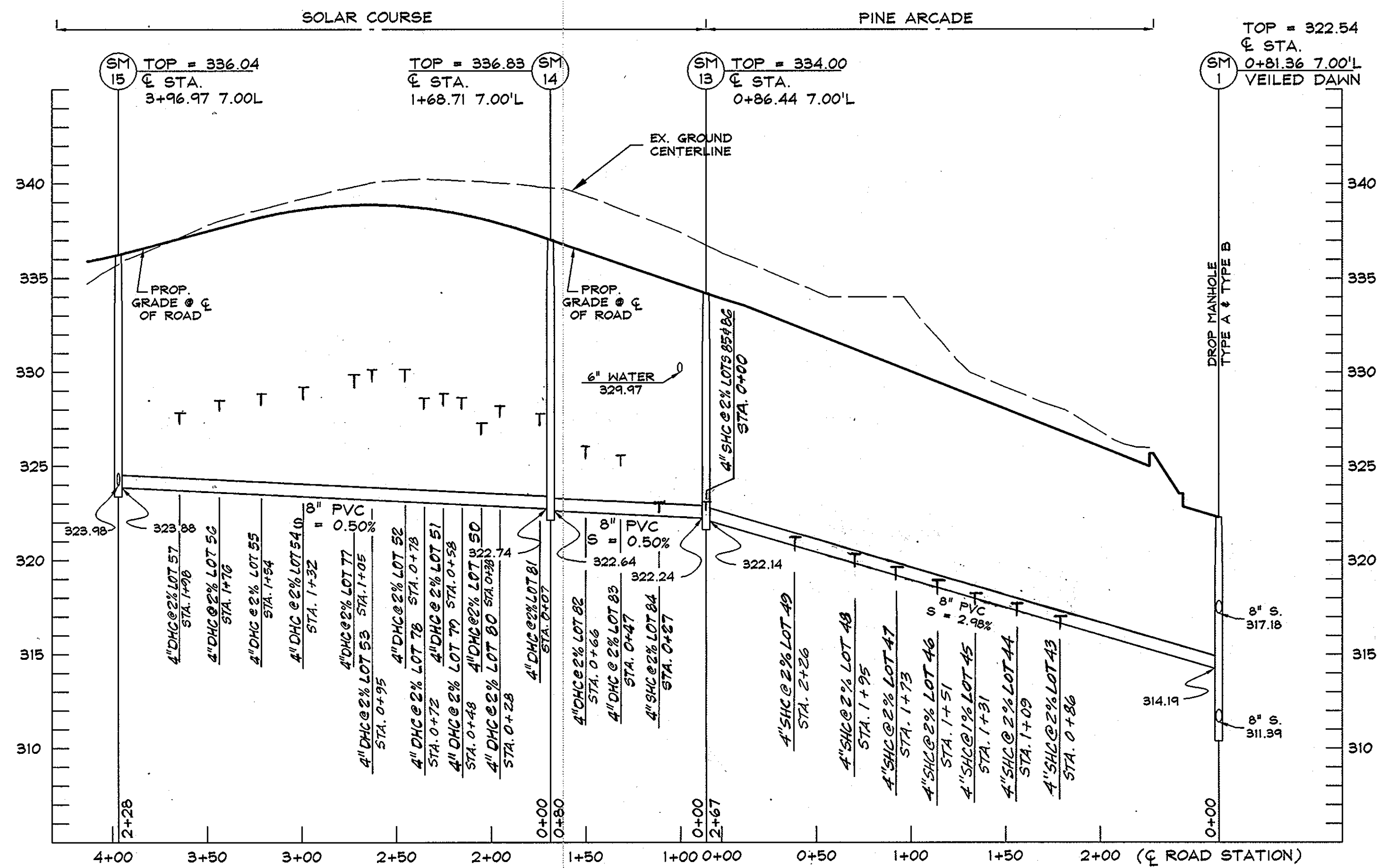
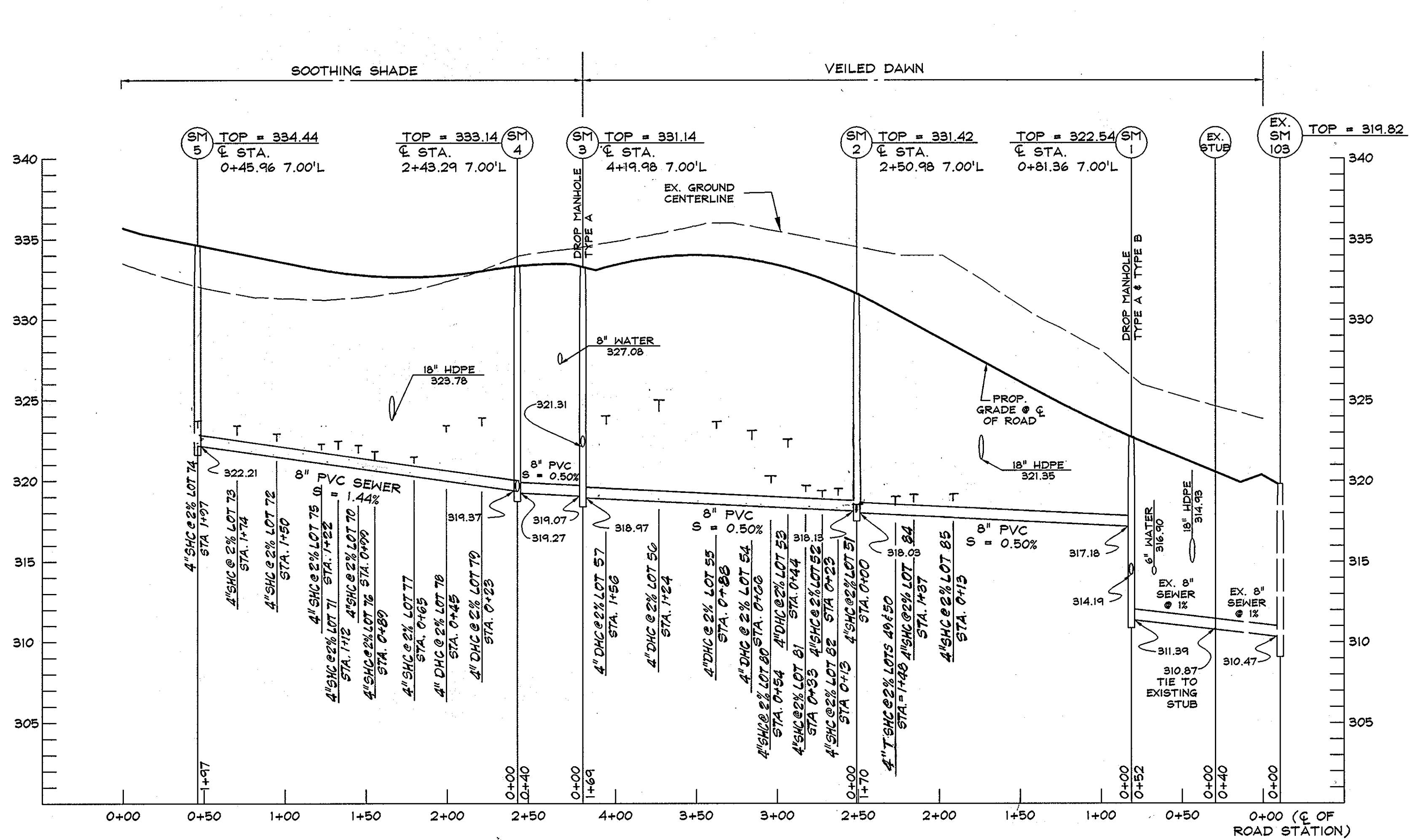
NO.	REVISIONS	DRN.	DATE
1	REVISE QUANTITIES CHART	DR	10-20-09

COVER SHEET

600 SCALE MAP NO.: 47 BLOCK NO.: 8

EMERSON
SECTION 2, PHASE 3 AND 5B,
PARCEL D-3 & AA-1
6th ELECTION DISTRICT
HOWARD COUNTY, MARYLAND
CONTRACT NO. 24-4493-D

SCALE: AS SHOWN
SHEET 1 OF 4



AS BUILT
DATE: SEPTEMBER 17, 2010

OWNER/DEVELOPER:
EMERSON LAND BUSINESS TRUST
10275 LITTLE PATUXENT PKWY
COLUMBIA, MD 21044
410-992-6000

DEPARTMENT OF PUBLIC WORKS
HOWARD COUNTY, MARYLAND
5/13/08

DEPARTMENT OF PLANNING AND ZONING
HOWARD COUNTY, MARYLAND
5/23/10

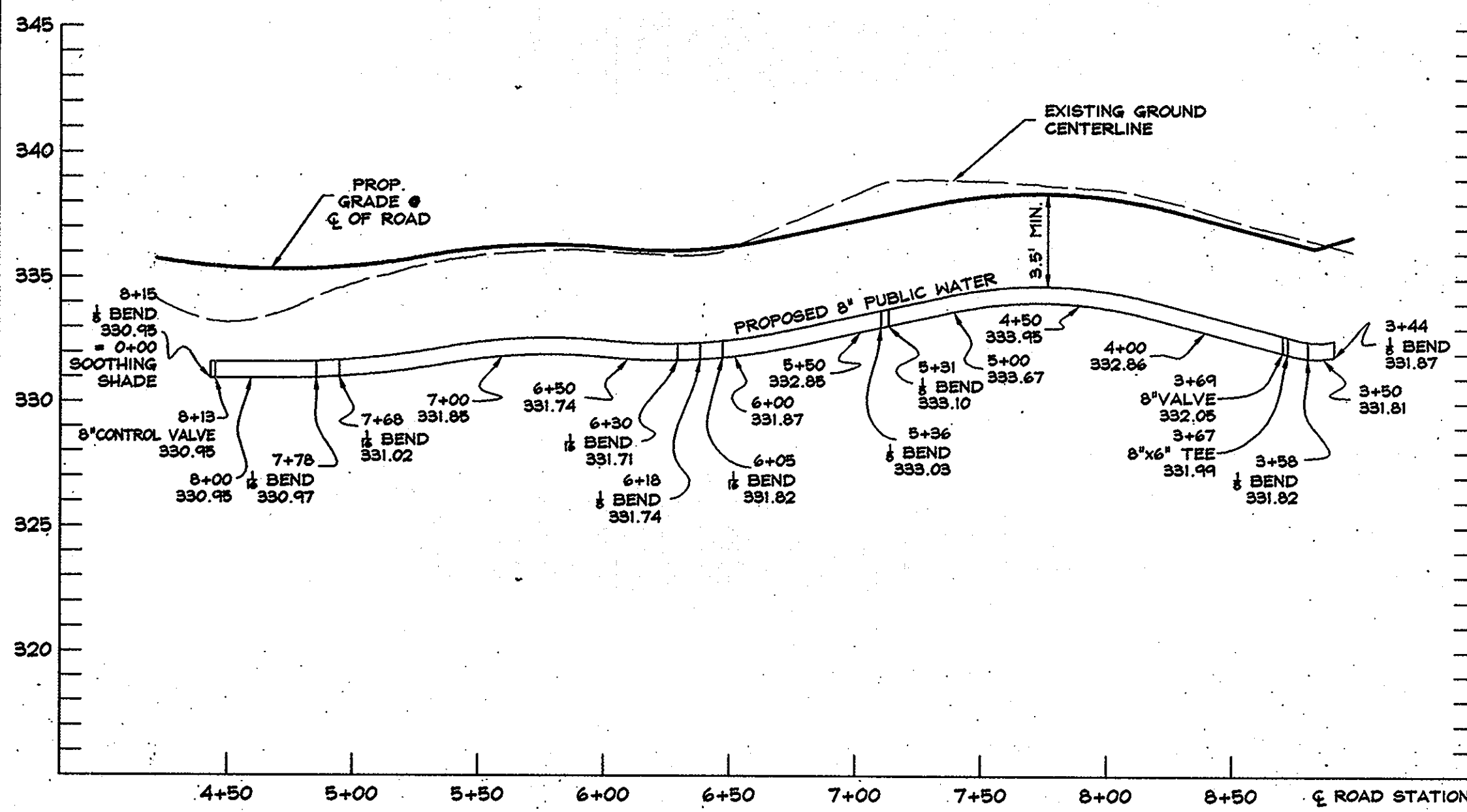
DeMario Design Consultants, Inc.
192 East Main Street
Westminster, MD 21157
Phone: (410) 386-0520
Fax: (410) 386-0564
E-Mail: dm@demariodesign.com

Professional Certification
I hereby certify that these documents were prepared or approved by me, and that I am a duly licensed Professional Engineer under the laws of the State of Maryland, License No. 25420, Expiration Date: 7.26.08.

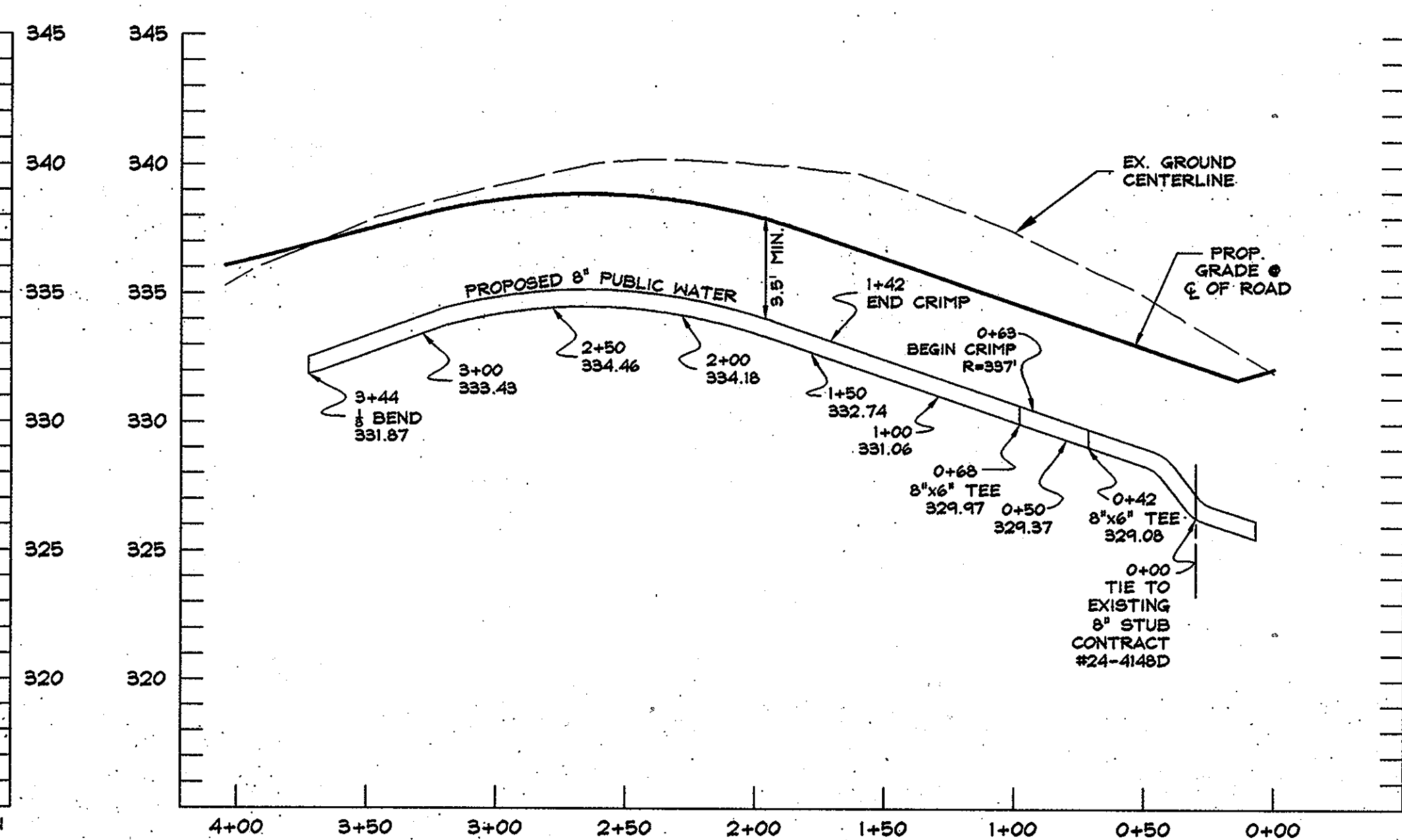
DES. BY: LJC			
DRN. BY: SDS			
CHK. BY: JCO			
JOB#: 08128.1			
DATE: 07-16-07			
NO.	1	REVISIONS	DN 10-20-09
NO.		REVISIONS	

SEWER PROFILES
600 SCALE MAP NO.: 47
BLOCK NO.: 8

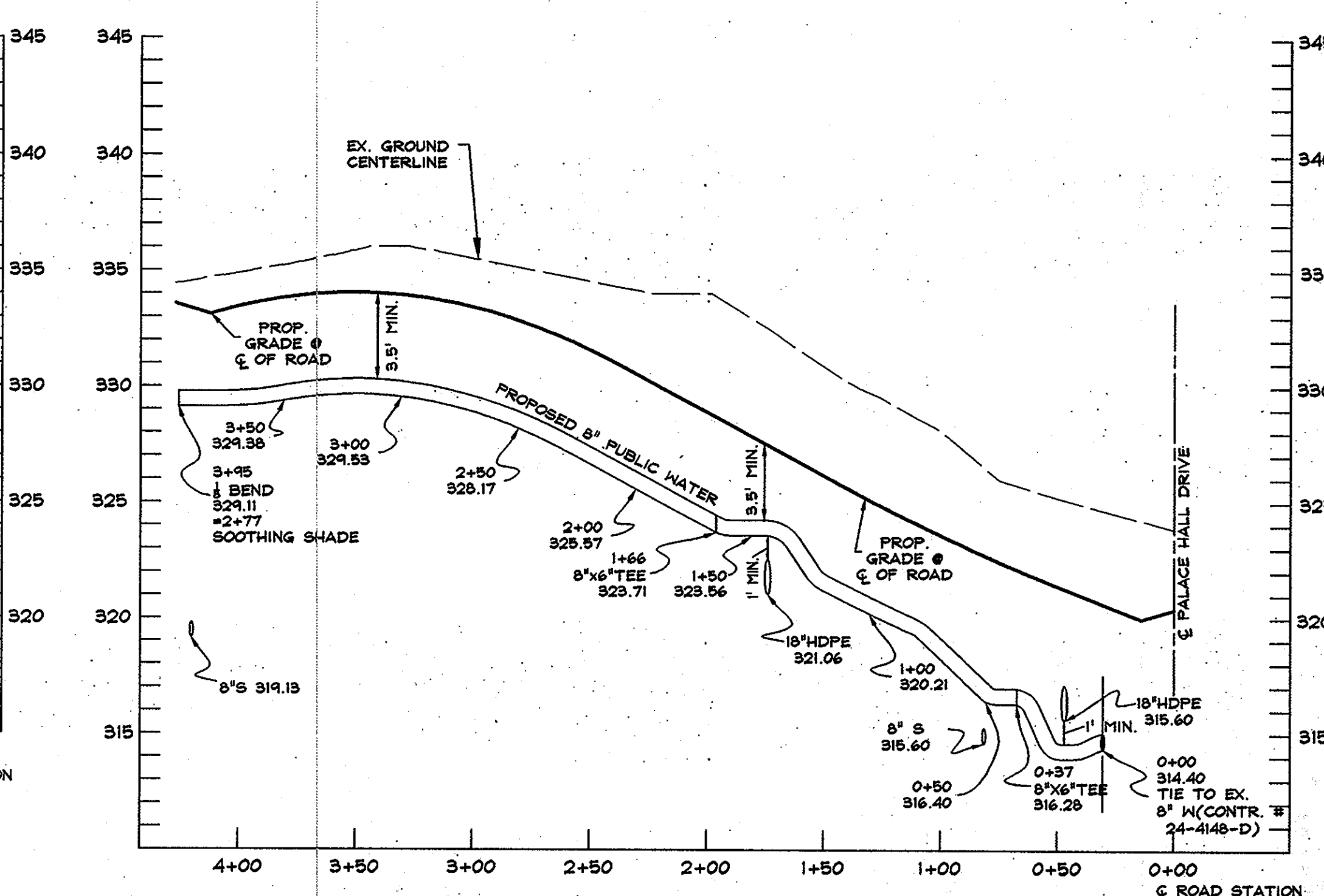
EMERSON
SECTION 2, PHASE 3 AND 5B,
PARCEL D-3 & AA-1
6th ELECTION DISTRICT
HOWARD COUNTY, MARYLAND
CONTRACT NO. 24-4493-D
SCALE: 1"=50'
SHEET 3 OF 4



SOLAR COURSE WATER PROFILE
SCALE: HORIZONTAL: 1"=50'
VERTICAL: 1"=5'



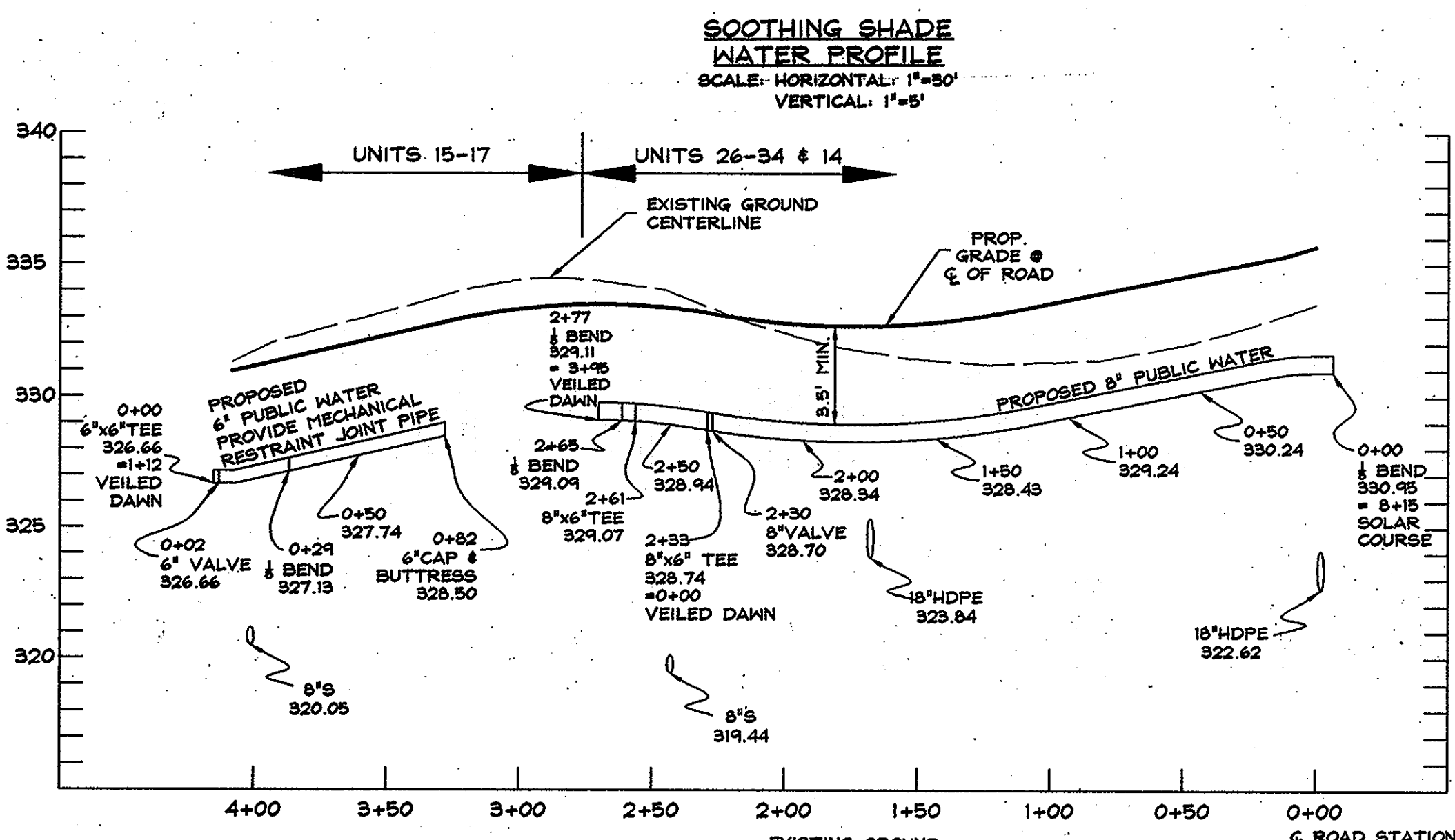
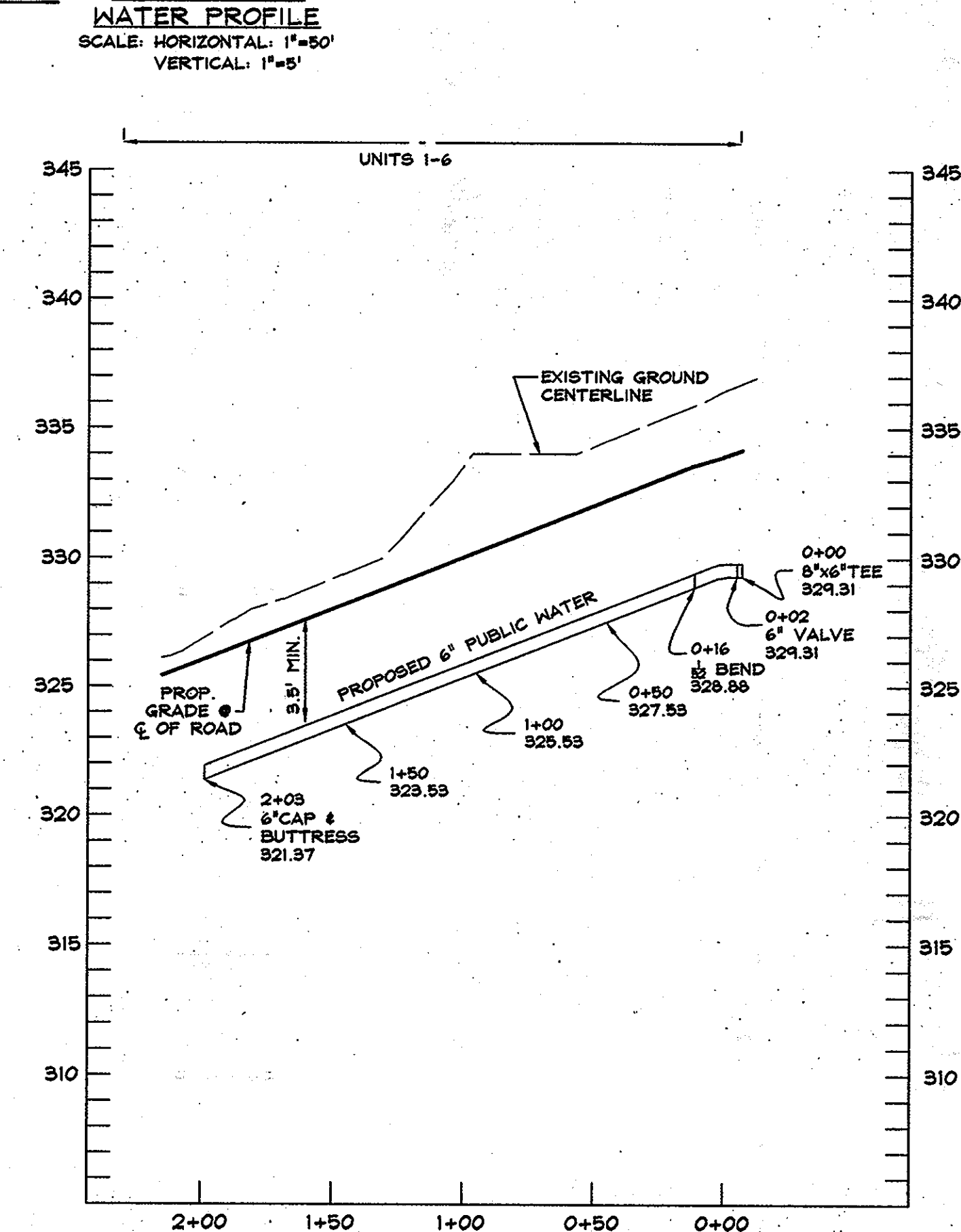
SOLAR COURSE WATER PROFILE
SCALE: HORIZONTAL: 1"=50'
VERTICAL: 1"=5'



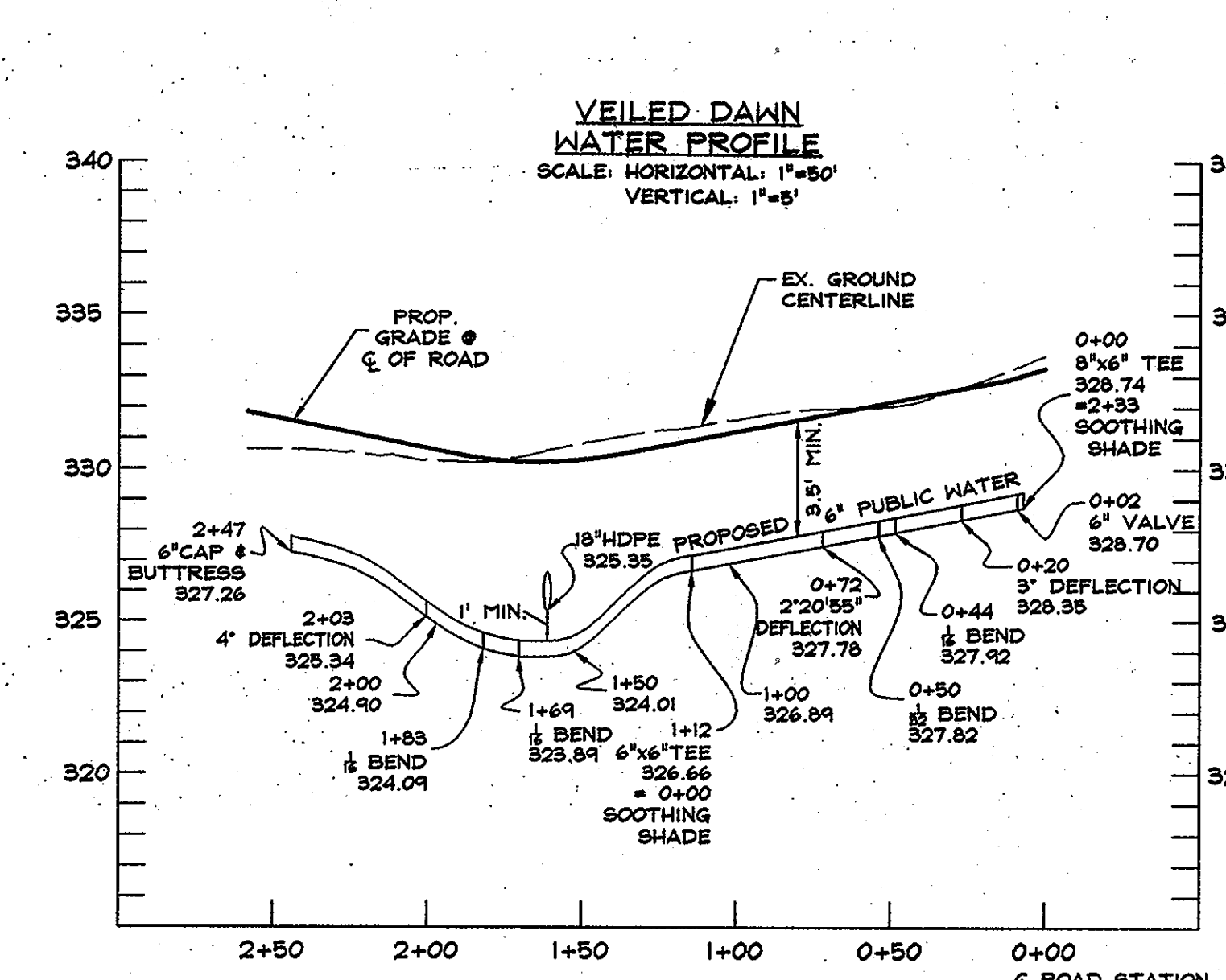
WATER HOUSE CONNECTIONS PARCEL AA-1, AS BUILT

LOT NUMBER	MEASUREMENT 1	MEASUREMENT 2	MEASUREMENT 3
44	17' to SMH-6	34.5' to SMH-1	6' to Lot 44 SHC
45	19' to SMH-6	5' to Lot 45 SHC	17.5' to Lot 46 SHC
46	36.5' to SMH-6	5.5' to Lot 46 SHC	18' to Lot 47 SHC
47	26' to SMH-7	5.5' to Lot 47 SHC	18' to Lot 48 WHC
48	18' to Lot 47 WHC	15.5' to SMH-7	6' VALVE
49	10' to Lot 49 SHC	18.5' to Fire Hydrant	41' to Lot 81 SHC
50	5' to Lot 50 SHC	41' to Lot 83 WHC	15.5' to Lot 51 SHC
51	16.5' to Lot 52 SHC	6.5' to Lot 51 SHC	17' to Lot 52 SHC
52	17' to Lot 53 SHC	4.5' to Lot 52 SHC	41.5' to Lot 81 SHC
53	16.5' to Lot 54 SHC	5' to Lot 53 SHC	41.5' to Lot 80 SHC
54	16.5' to Lot 55 SHC	5.5' to Lot 54 SHC	42' to Lot 80 WHC
55	24' to Lot 56 SHC	5.5' to Lot 55 SHC	52.5' to Lot 80 WHC
56	5' to Lot 56 SHC	28' to Lot 57 SHC	66.5' to SMH-4
57	6' to Lot 57 SHC	21.5' to SMH-3	33' to Lot 58 SHC
58	15' to Lot 58 SHC	4' to Lot 59 WHC	13' to SMH-8
59	4' to Lot 58 WHC	15' to SMH-8	19' to Lot 59 SHC
60	5.5' to Lot 59 SHC	6' to Lot 60 SHC	77' to Fire Hydrant
61	17' to Lot 61 SHC	13.5' to SMH-9	52.5' to SMH-11
62	29' to SMH-12	7' to Lot 62 SHC	
63	9.5' to Lot 62 SHC	29.5' to SMH-12	17' to Lot 63 SHC
64	7.5' to Lot 63 SHC	32.5' to SMH-11	13' to Lot 64 SHC
65	9' to Lot 64 SHC	26' to SMH-11	18.5' to Lot 65 SHC
66	15' to Lot 66 SHC	60.5' to SMH-9	5' to Lot 67 SHC
67	59' to SMH-9	7.5' to Lot 67 SHC	18' to Lot 68 SHC
68	5' to Lot 68 SHC	52' to SMH-9	31' to Lot 69 SHC
69	5' to Lot 69 SHC	29.5' to SMH-10	45.5' to SMH-3
70	7' to Lot 70 SHC	46' to Lot 77 WHC	61.5' to Lot 78 SHC
71	32.5' to Lot 72 SHC	40.5' to Lot 75 SHC	5.5' to Lot 71 SHC
72	18' to Lot 73 SHC	30' to SMH-5	6' to Lot 72 SHC
73	18.5' to Lot 74 SHC	5.5' to Lot 73 SHC	33' to SMH-5
74	5' to Lot 74 SHC	28' to SMH-5	67.5' to SMH-15
75	47' to Lot 72 SHC	3' to Lot 75 SHC	71.5' to SMH-5
76	43' to Lot 71 SHC	14.5' to Lot 76 SHC	18.5' to Lot 75 SHC
77	46' to Lot 70 WHC	5' to Lot 76 SHC	18.5' to Lot 76 SHC
78	7.5' to Lot 77 SHC	11.5' to Lot 78 SHC	53' to Lot 70 WHC
79	17.5' to Lot 78 SHC	5.5' to Lot 79 SHC	58' to Fire Hydrant
80	7.5' to Lot 80 SHC	42.5' to Lot 54 SHC	52.5' to Lot 55 WHC
81	15.5' to Lot 80 SHC	42' to Lot 53 SHC	5.5' to Lot 81 SHC
82	15' to Lot 81 SHC	4.5' to Lot 82 SHC	42' to Lot 52 SHC
83	10' to Lot 83 SHC	16' to Lot 84 WHC	28.5' to SMH-2
84	16' to Lot 83 WHC	8' to Lot 84 SHC	36.5' to SMH-2
85	5' to Lot 85 SHC	60.5' to SMH-7	41.5' to Fire Hydrant

VEILED DAWN WATER PROFILE
SCALE: HORIZONTAL: 1"=50'
VERTICAL: 1"=5'



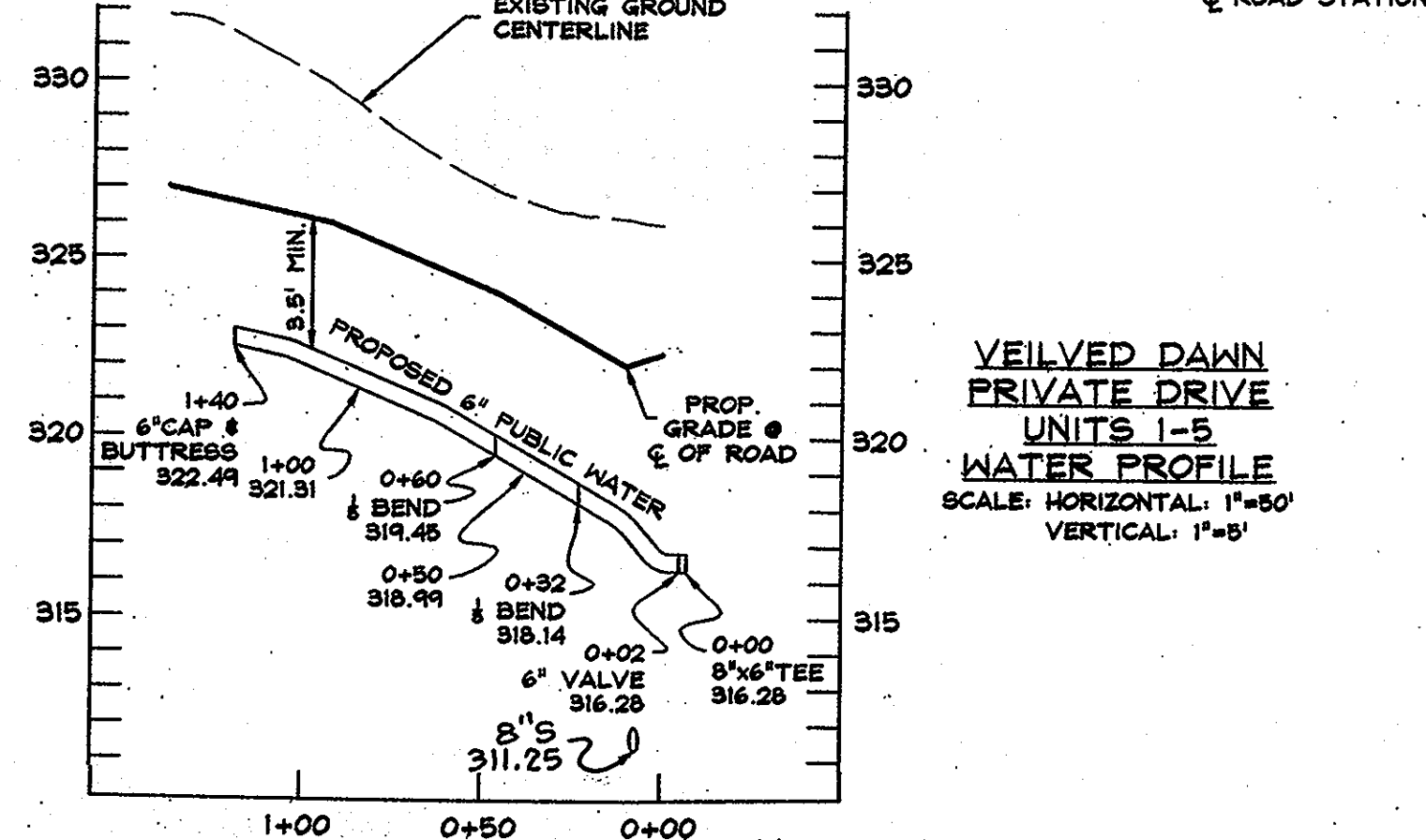
SOOTHING SHADE WATER PROFILE
SCALE: HORIZONTAL: 1"=50'
VERTICAL: 1"=5'



VEILED DAWN WATER PROFILE
SCALE: HORIZONTAL: 1"=50'
VERTICAL: 1"=5'

SEWER HOUSE CONNECTIONS PARCEL AA-1, AS BUILT

LOT NUMBER	MEASUREMENT 1	MEASUREMENT 2	MEASUREMENT 3
44	6' to Lot 44 WHC	16' to SMH-16	17' to Lot 45 SHC
45	17' to Lot 44 SHC	18' to SMH-6	5' to Lot 45 WHC
46	17.5' to Lot 45 WHC	31.5' to SMH-6	5.5' to Lot 46 WHC
47	18' to Lot 46 WHC	30.5' to SMH-7	5.5' to Lot 47 WHC
48	13.5' to SMH-7	12' to Lot 48 WHC	34.5' to Fire Hydrant
49	10' to Lot 49 WHC	5.5' to Lot 50 SHC	41' to Lot 84 WHC
50	5.5' to Lot 49 SHC	41' to Lot 84 WHC	5' to Lot 50 WHC
51	15.5' to Lot 50 WHC	14' to SMH-2	6.5' to Lot 51 WHC
52	4.5' to Lot 52 WHC	16.5' to Lot 51 WHC	42' to Lot 82 WHC
53	42' to Lot 81 WHC	5' to Lot 53 WHC	17' to Lot 52 WHC
54	5.5' to Lot 54 WHC	16.5' to Lot 53 WHC	42.5' to Lot 80 WHC
55	5' to Lot 55 WHC	16.5' to Lot 54 WHC	50' to Lot 80 WHC
56	5' to Lot 56 WHC	29' to Lot 55 WHC	74' to Lot 80 WHC
57	6' to Lot 57 WHC	21' to SMH-3	28' to Lot 56 WHC
58	33' to Lot 57 WHC	15' to Lot 58 WHC	16' to SMH-8
59	19' to Lot 59 WHC	5.5' to Lot 60 WHC	75' to Fire Hydrant
60	6' to Lot 60 WHC	17.5' to Lot 61 SHC	81' to Fire Hydrant
61	17.5' to Lot 60 SHC	15' to SMH-9	17' to Lot 61 WHC
62	7' to Lot 62 WHC	29' to SMH-12	9.5' to Lot 63 WHC
63	17' to Lot 63 WHC	38' to SMH-12	7.5' to Lot 64 WHC
64	13' to Lot 64 WHC	9' to Lot 65 WHC	28.5' to SMH-11
65	18.5' to Lot 65 WHC	27.5' to SMH-11	27' to Lot 66 SHC



VEILED DAWN PRIVATE DRIVE WATER PROFILE
SCALE: HORIZONTAL: 1"=50'
VERTICAL: 1"=5'

PINE ARCADE PRIVATE ROAD WATER PROFILE
SCALE: HORIZONTAL: 1"=50'
VERTICAL: 1"=5'

AS BUILT
DATE: SEPTEMBER 17, 2010

OWNER/DEVELOPER:
EMERSON LAND BUSINESS TRUST
10275 LITTLE PATUXENT PKWY
COLUMBIA, MD 21044
410-992-6000

DEPARTMENT OF PUBLIC WORKS HOWARD COUNTY, MARYLAND CHIEF, BUREAU OF UTILITIES DATE: 5/12/10	DEPARTMENT OF PLANNING AND ZONING HOWARD COUNTY, MARYLAND CHIEF, DEVELOPMENT ENGINEERING DIVISION DATE: 5/12/10	DeMario Design Consultants, Inc. 192 East Main Street, Westminster, MD 21157 Phone: (410) 385-0590 Fax: (410) 385-0594 eMail: ddc@demariodesign.com Professional Certification: I hereby certify that these documents were prepared or approved by me, and that I am a duly licensed Professional Engineer under the laws of the State of Maryland, License No. 25420, Expiration Date: 7.20.08.	DES. BY: LJC DRN. BY: SDS CHK. BY: JCO JOB#: 06128.1 DATE: 07-16-07	WATER PROFILES NO. _____ REVISIONS _____ DRN. _____ DATE _____ 600 SCALE MAP NO.: 47 BLOCK NO.: 8	EMERSON SECTION 2, PHASE 3 AND 5B, PARCEL D-3 & AA-1 6th ELECTION DISTRICT HOWARD COUNTY, MARYLAND CONTRACT NO. 24-4493-D SCALE: 1"=50' SHEET 4 OF 4
--	--	--	---	--	--