

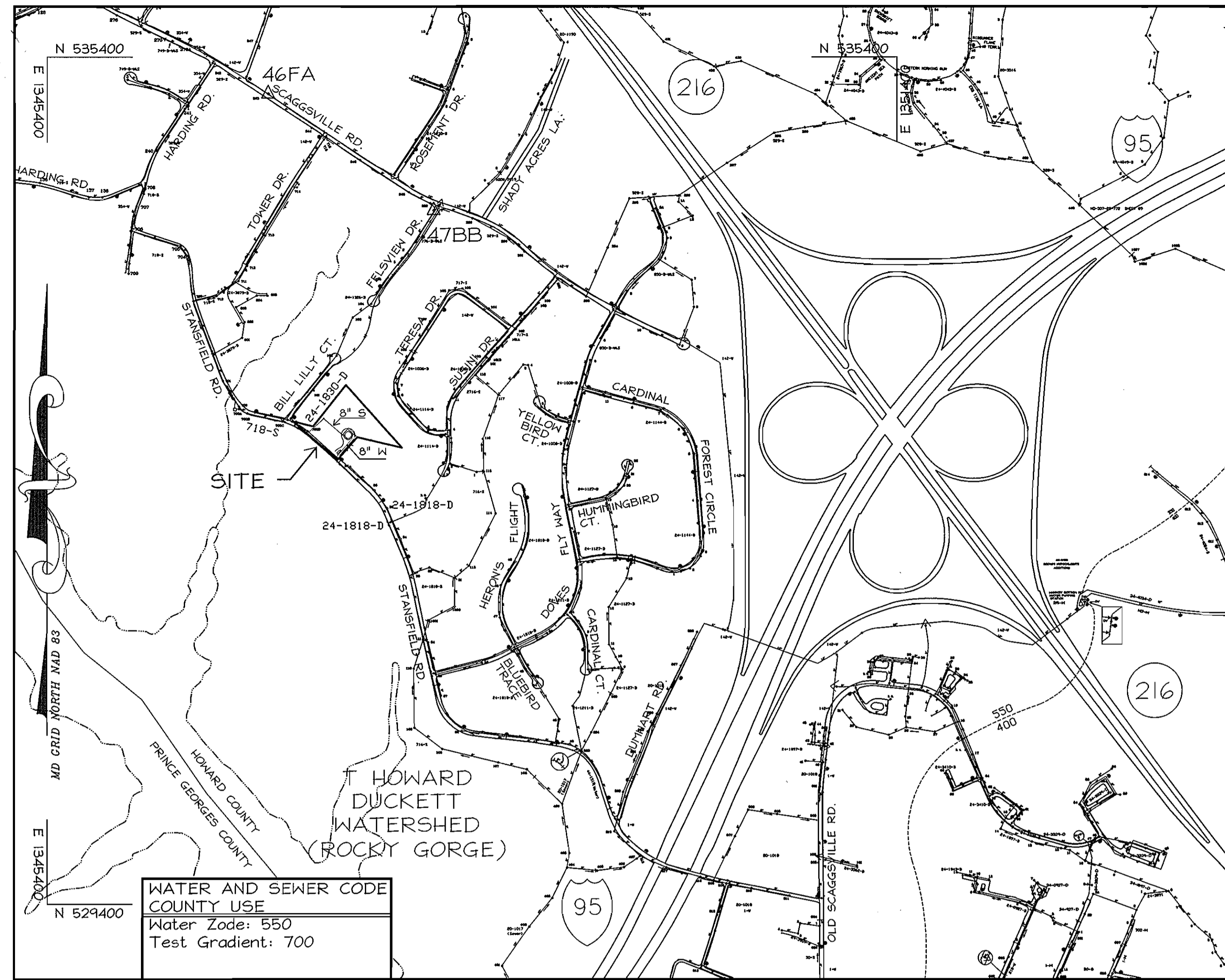
| INDEX OF SHEETS | |
|-----------------|----------------------|
| No. | Description |
| 1 | Title Sheet |
| 2 | Plan & Profile Sheet |

BENCHMARKS:

- Howard County Control Station 46FA Elevation = 403.65' NAD 83 Coordinates: N535140.866, E1346962.690.
Standard stamped disc set on a 3' deep column of concrete located on the Northeast side of Scaggsville Road, 5.2' off edge of paving, 30.5' from G&E Pole #640720 and 33.5' from a gate corner. Pole and gate located on the Northeast side of Scaggsville Road.
- Howard County Control Station 47BB Elevation = 398.56' NAD 83 Coordinates: N534316.917, E1348131.250.
Standard stamped disc set on a 3' deep column of concrete located on the West side of Felsview Drive, 3' from end of curb and 22.5' from a Gas Meter. Curb and meter located on the West side of Drive.

LEGEND

- s — s — EX SANITARY SEWER
- s — s — EX SEWER HOUSE CONNECTION
- ⊙ EX SANITARY SEWER MANHOLE
- w — w — EX WATER MAIN
- w — w — EX WATER HOUSE CONNECTION
- ⊗ EX WATER VALVE
- ▬▬▬ PROPOSED WATER LINE
- ▬▬▬ PROPOSED SEWER LINE
- ▬▬▬ PROPOSED WATER LINE VALVES
- ▬▬▬ PROPOSED WATER LINE TEES
- ⊗ PROPOSED FIRE HYDRANTS
- ▬▬▬ PROPOSED WATER LINE BEND



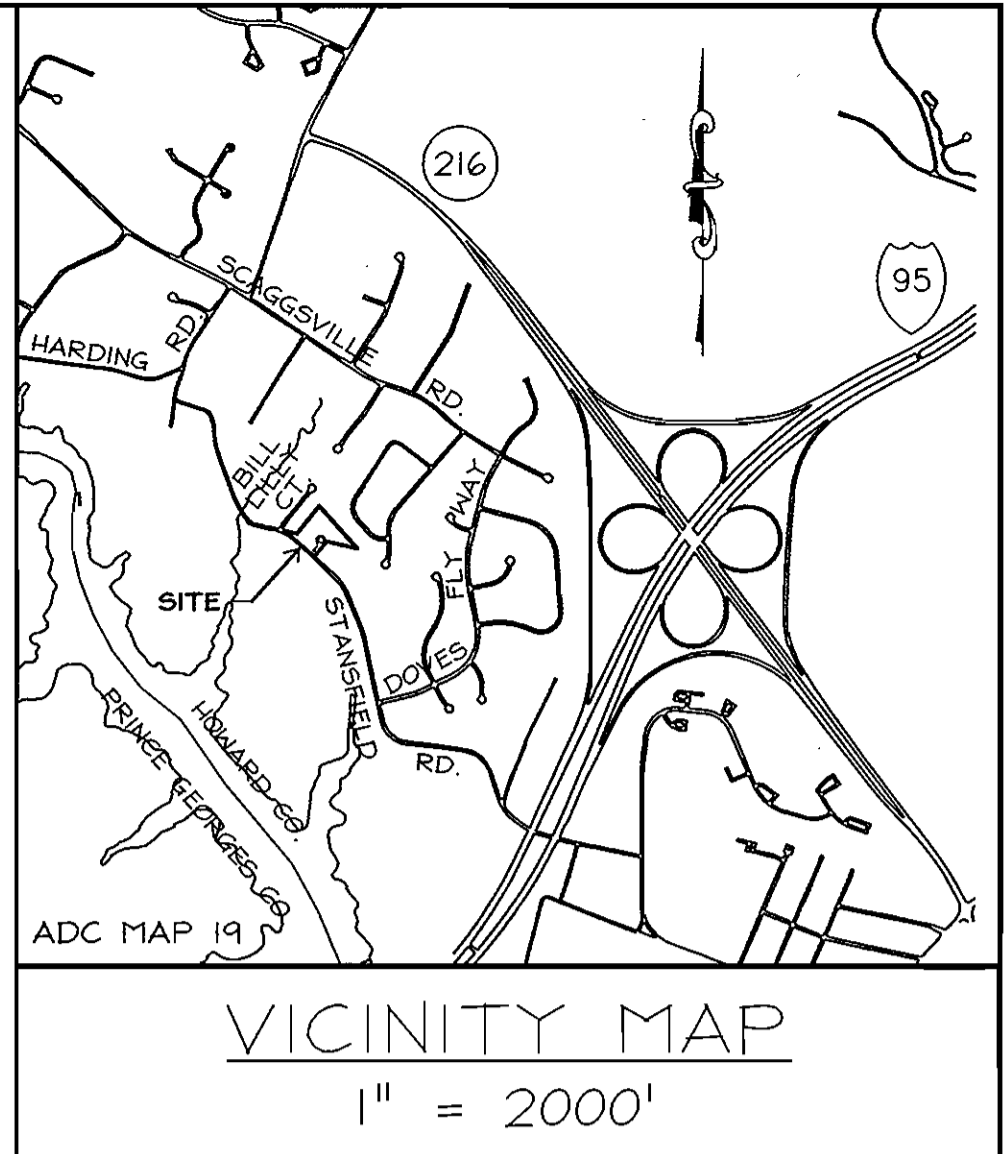
WATER AND SEWER CODE COUNTY USE
 Water Zone: 550
 Test Gradient: 700

Type of Building: Single Family Detached
 Number of Lots/Parcels: 7 (2 RESIDENTIAL/1 OPEN SPACE)
 Number of W.H.C.'S: 6
 Number of S.H.C.'S: 6
 Drainage Area: Patuxent River - Rocky Gorge
 Treatment Plant: Patuxent WRP

VICINITY MAP
 1" = 600'

GENERAL NOTES

- PART I: GENERAL**
- Approximate location of existing mains are shown. The Contractor shall take all necessary precautions to protect existing mains and services and maintain uninterrupted service. Any damage incurred shall be repaired immediately to the satisfaction of the Engineer at the Contractor's expense.
 - Topographic field surveys were performed on September, 2006 by LDE, Inc.
 - The coordinates shown on the drawings are based on Maryland State Reference System, NAD 83/91 projected by Howard County Geodetic Control Stations No. 46FA & and No. 47BB.
 - All vertical controls are based on NAVD 88. Vertical controls provided on the drawings are per Howard County Geodetic Control Stations No. 46FA & and No. 47BB.
 - All pipe elevations shown are invert elevations unless otherwise noted on the plans.
 - Clear all utilities by a minimum of 12 inches. Clear all poles by 5'-0" minimum or tunnel as required unless otherwise noted. The owner has contacted the utility companies and has made arrangements for bracing of poles as shown on the drawings. In the event the Contractor's work requires the bracing of additional poles, any cost incurred by the Owner for bracing of additional poles or damages shall be deducted from monies owed the Contractor. The Contractor shall coordinate with the utility companies to schedule the bracing of the poles, if required.
 - For details not shown on the drawing, and for materials and construction methods, use Howard County Design Manual, Volume IV, Standard Specifications and Details for Construction (latest edition). The Contractor shall have a copy of Volume IV on the job site at all times.
 - Where test pits are required on existing utilities, they are noted by the symbol ⊗ at the location of the test pit. Existing utilities in the vicinity of the proposed work for which test pits have not been dug shall be located by the Contractor two weeks in advance of construction operations at his own expense.
 - The contractor shall notify the following utility companies or agencies at least five (5) working days before starting work shown on these plans:
 - a. AT&T: 1-800-252-1133
 - b. BGE (Contractor Services): (410) 850-4620
 - c. BGE (Underground Damage Control): (410)-787-9068
 - d. Howard County Department of Public Works Bureau of Utilities: (410) 313-4900
 - e. Colonial Pipeline Co.: (410) 795-1390
 - f. Miss Utility: 1-800-257-7777 (410) 531-5533
 - g. State Highway Administration: (410) 531-2242
 - h. Verizon: 1-800-743-0933 / 410-224-9210
 - Trees and shrubs are to be protected from damage to maximum extent. Trees and shrubs located within the construction strip are not to be removed or damaged by the Contractor.
 - The contractor shall remove trees, stumps and roots along line of excavation. Payment for such removal shall be included in the unit price bid for construction of the main. The contractor shall notify the Bureau of Highways, Howard County, at 410-313-7450 at least five (5) working days before open cutting or boring/jacking of any County road for laying water/sewer mains or house connections. The approval of these drawings will constitute compliance with DPM requirements per Section 18.14(a) of the Howard County Code.
- PART II: WATER**
- All water mains to be D.I.P. Class 54 unless otherwise noted.
 - Tops of all water mains to have a minimum of 3'-6" cover unless otherwise noted.
 - Valves adjacent to the tees shall be strapped to the tees.
 - All fittings shall be buttressed or anchored with concrete in accordance with Standard Details unless otherwise provided for on the drawings.
 - Fire hydrants shall be set to the bury line elevations shown on the drawings. All fire hydrants shall be installed in accordance with Standard Details. The soil around the fire hydrant shall be compacted in accordance with Section 1000 and 1005 of the Standard Specifications.
 - The Contractor shall not operate any water main valves on the existing water system.
 - All water house connections shall be for inside meter setting unless otherwise noted on plans or in specifications.
 - For sprinkler system for all townhomes or multi-family dwelling units should have a minimum of 1' connection with a 3/4" meter.
- PART III: SEWER**
- All sewer mains to be DIP or P.V.C. unless otherwise noted.
 - All manholes shall be 4'-0" inside diameter unless otherwise noted.
 - Force mains shall be D.I.P. only.
 - Manholes shown with 12" and 16" walls are for brick manholes only.
 - Manholes designated WT in plan and profile shall have watertight frame and covers; Standard Detail 05.52. Where watertight manhole frame and cover is used, set top of frame 1'-6" above finished grade unless otherwise noted on the drawings.
 - House(s) with the symbol "C.N.S." indicates that cellar cannot be serviced.
 - The contractor shall provide a joint in all sewer mains within 2'-0" of exterior manhole wall.



WATER HOUSE CONNECTION AS-BUILT LOCATION TABLE

| Lot Number | Address | Location Dimension 1 | Location Dimension 2 |
|------------|---------|----------------------|----------------------|
| 1 | | | |
| 2 | | | |
| 4 | | | |
| 5 | | | |
| 6 | | | |
| 7 | | | |

SEWER HOUSE CONNECTION AS-BUILT LOCATION TABLE

| Lot Number | Address | Location Dimension 1 | Location Dimension 2 |
|------------|---------|----------------------|----------------------|
| 1 | | | |
| 2 | | | |
| 4 | | | |
| 5 | | | |
| 6 | | | |
| 7 | | | |

FINAL WATER & SEWER PLAN

WATKINS' CHOICE

△ PHASE 1 - LOTS 1, 2, OPEN SPACE LOT 3 AND NON-BUILDABLE BULK PARCEL "A"
 ; PHASE 2 - LOTS 4, 5, 6 AND 7
 A RESUBDIVISION OF WATKINS' CHOICE -
 PHASE 1 - NON-BUILDABLE BULK PARCEL "A"

TAX MAP NO. 46 - GRID NO. 18 - PARCEL 215
 6th ELECTION DISTRICT - HOWARD COUNTY, MD
 Contract No. 24-4492-D

I HEREBY CERTIFY THAT THESE DOCUMENTS WERE PREPARED OR APPROVED BY ME, AND THAT I AM A DULY LICENSED PROFESSIONAL ENGINEER UNDER THE LAWS OF THE STATE OF MARYLAND, LICENSE NO. 19184, EXPIRES 06/30/09.

Bruce D. Burton
 BRUCE D. BURTON
 PROFESSIONAL ENGINEER
 DATE 12/16/08

△ QUANTITIES AS BUILT

| ITEM | QUANTITIES ESTIMATED | QUANTITIES | TYPE | MANUFACTURER/SUPPLIER |
|-------------------|----------------------|------------|------|-----------------------|
| 8" x 8" TEE | 1 EA. | | | |
| 8" WATER - D.I.P. | 665 L.F. | | | |
| 8" VALVE | 2 EA. | | | |
| 8" - 1/8" BEND | 4 EA. | | | |
| 1" WHC | 225 L.F. | | | |
| FIRE HYDRANT | 1 EA. | | | |
| 8" CAP & BUTTRESS | 1 EA. | | | |
| 8" x 6" FHT | 1 EA. | | | |
| 6" WATER - D.I.P. | 6 L.F. | | | |
| 4" SEWER MANHOLE | 4 EA. | | | |
| 4" SHC | 231 L.F. | | | |
| 8" SEWER | 418 L.F. | | | |

NAME OF UTILITY CONTRACTOR: _____

CHECK BOX:
 SURVEY & DRAFTING DIVISION
 AS BUILT DATE: _____

REVIEWED FOR HOWARD SOIL CONSERVATION DISTRICT AND MEETS TECHNICAL REQUIREMENTS.

[Signature]
 Natural Resources Conservation Service

THIS DEVELOPMENT PLAN IS APPROVED FOR SOIL EROSION AND SEDIMENT CONTROL BY THE HOWARD COUNTY SOIL CONSERVATION DISTRICT.

[Signature] 1/12/09
 HOWARD SOIL CONSERVATION DISTRICT DATE

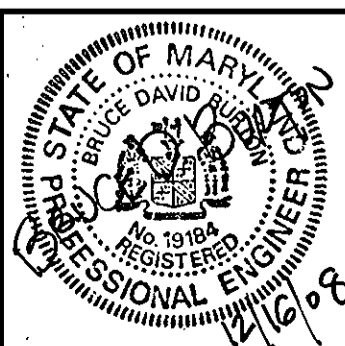
SEDIMENT CONTROL MEASURES FOR THIS CONTRACT WILL BE IMPLEMENTED IN ACCORDANCE WITH SECTION 219 OF THE STANDARD SPECIFICATION AND THE APPROVED FINAL PLAN, F 08-179 F 08-035

OWNER/DEVELOPER
 WATKINS' CHOICE LLC
 11208 Ridemark Row
 Columbia, Md. 21044
 410-964-9815

DEPARTMENT OF PUBLIC WORKS
[Signature]
 CHIEF-BUREAU OF UTILITIES DATE 12/16/08

DEPARTMENT OF PLANNING & ZONING
[Signature]
 CHIEF-DEVELOPMENT ENGINEERING DIVISION DATE 1-16-9

LDE Inc.
 Engineers, Surveyors, Planners
 9250 Ramsey Road, Suite 106 Columbia, Maryland - 21045
 (410)715-1070 - (301)556-3424 - FAX(410)715-9340

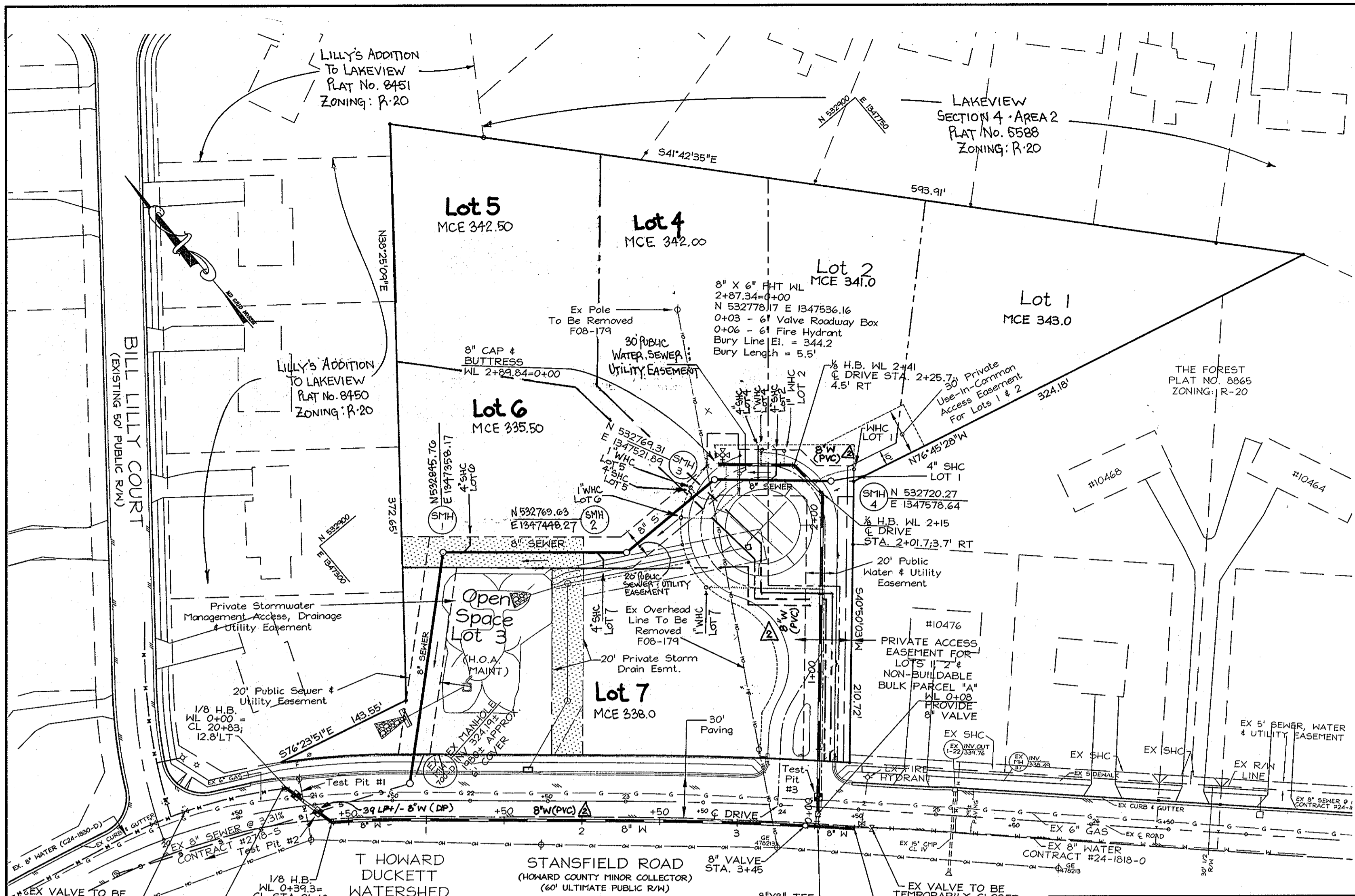


| DESIGNED EDS | DRAWN STB | CHECKED BDB | DATE | BY NO. | REVISION | DATE |
|--------------|-----------|-------------|---------|--------|---|--------|
| | | LDE | 12/2008 | | REVISE WHC/SHC AS BUILT LOCATION TABLE, UPDATE TITLES | 4/2009 |
| | | | | | UPDATE QUANTITIES, UPDATE # OF LOTS/WHC/SHC IN BLOCK | |

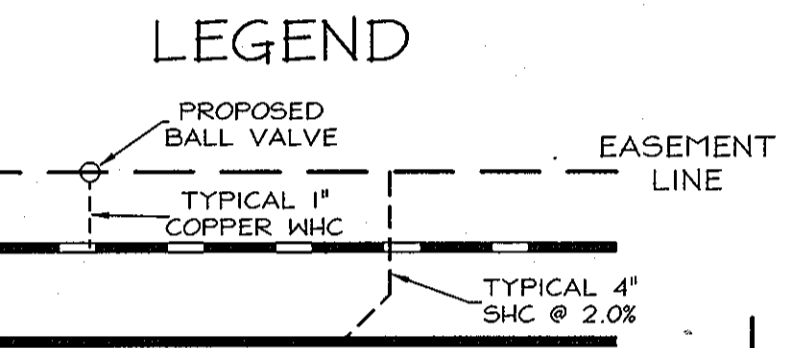
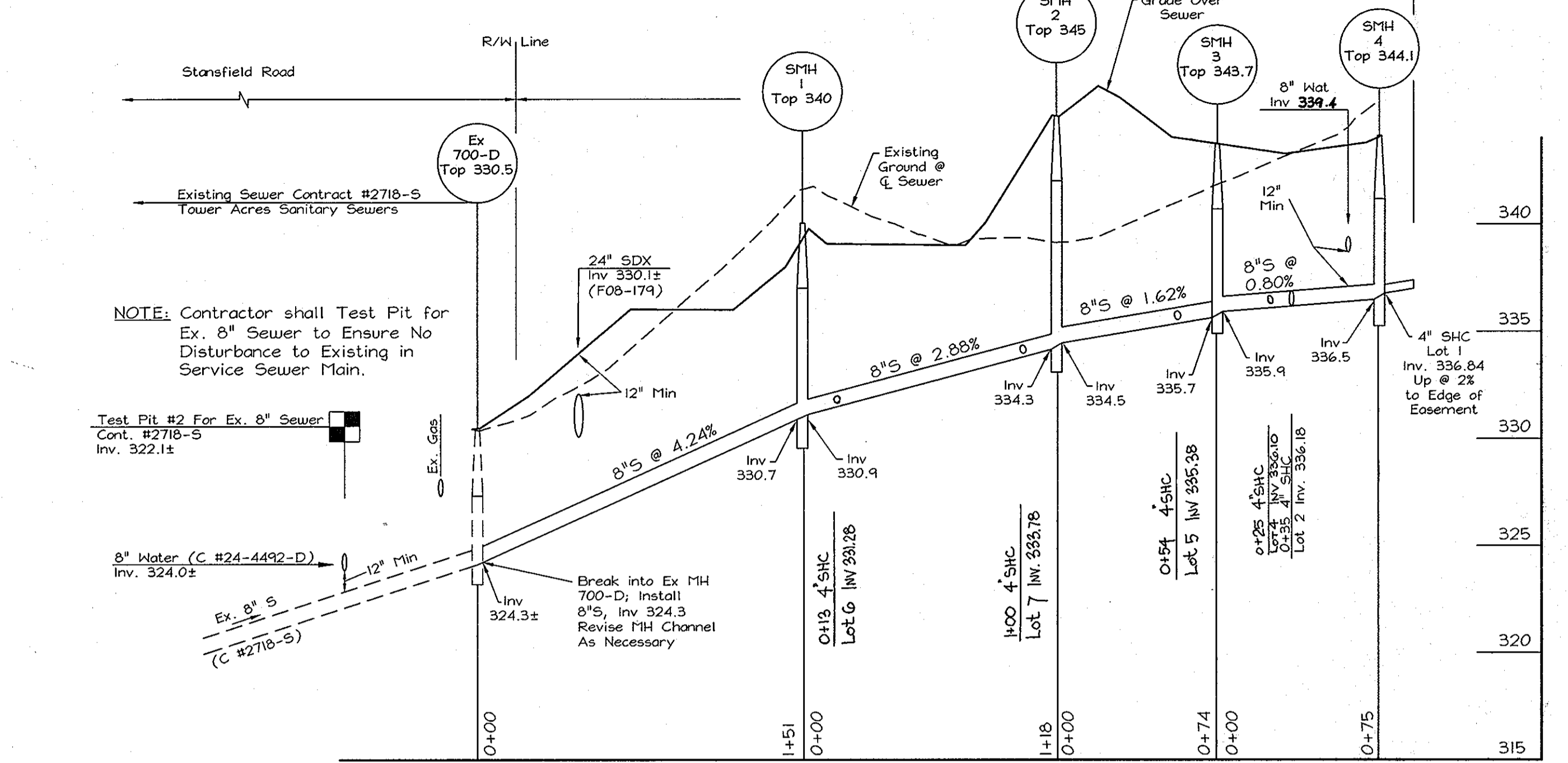
TITLE SHEET
 SCALE MAP NO. 46 BLOCK 18

WATKINS' CHOICE
 △ PHASE 1 - LOTS 1, 2, OPEN SPACE LOT 3 AND NON-BUILDABLE BULK PARCEL "A"
 ; PHASE 2 - LOTS 4, 5, 6 AND 7; A RESUBDIVISION OF WATKINS' CHOICE - PHASE 1 - NON-BUILDABLE BULK PARCEL "A"
 TAX MAP 46 - GRID NO. 18 - PARCEL 215
 6TH ELECTION DISTRICT HOWARD COUNTY, MARYLAND
 CONTRACT NO. 24 4492-D

SCALE AS SHOWN
 SHEET 1 OF 2

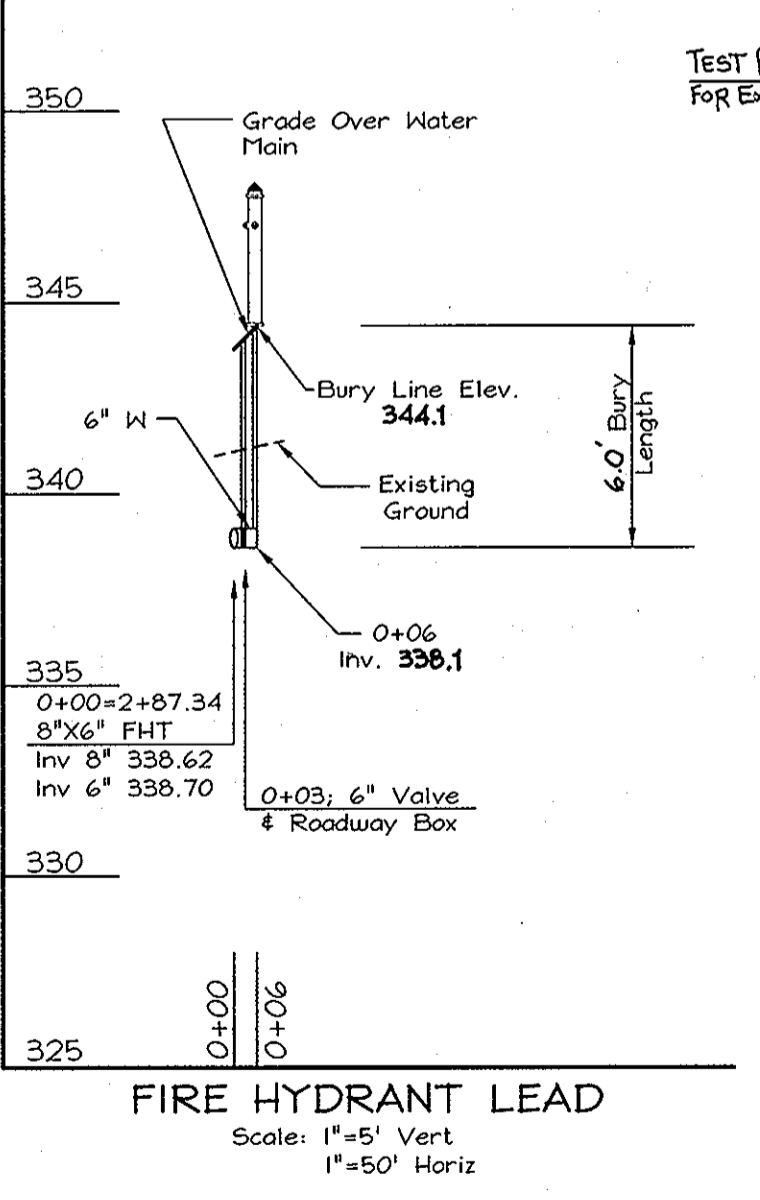
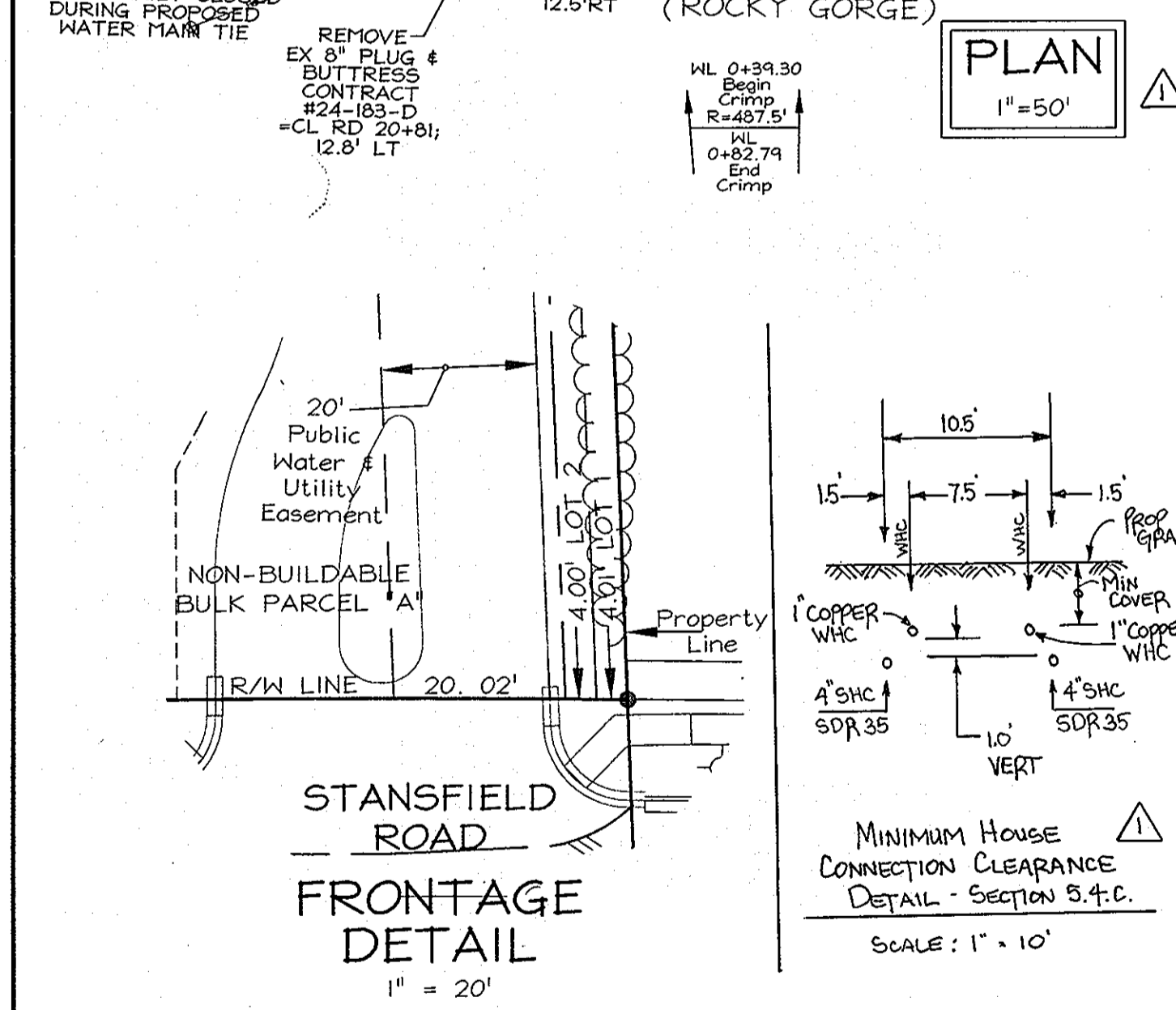
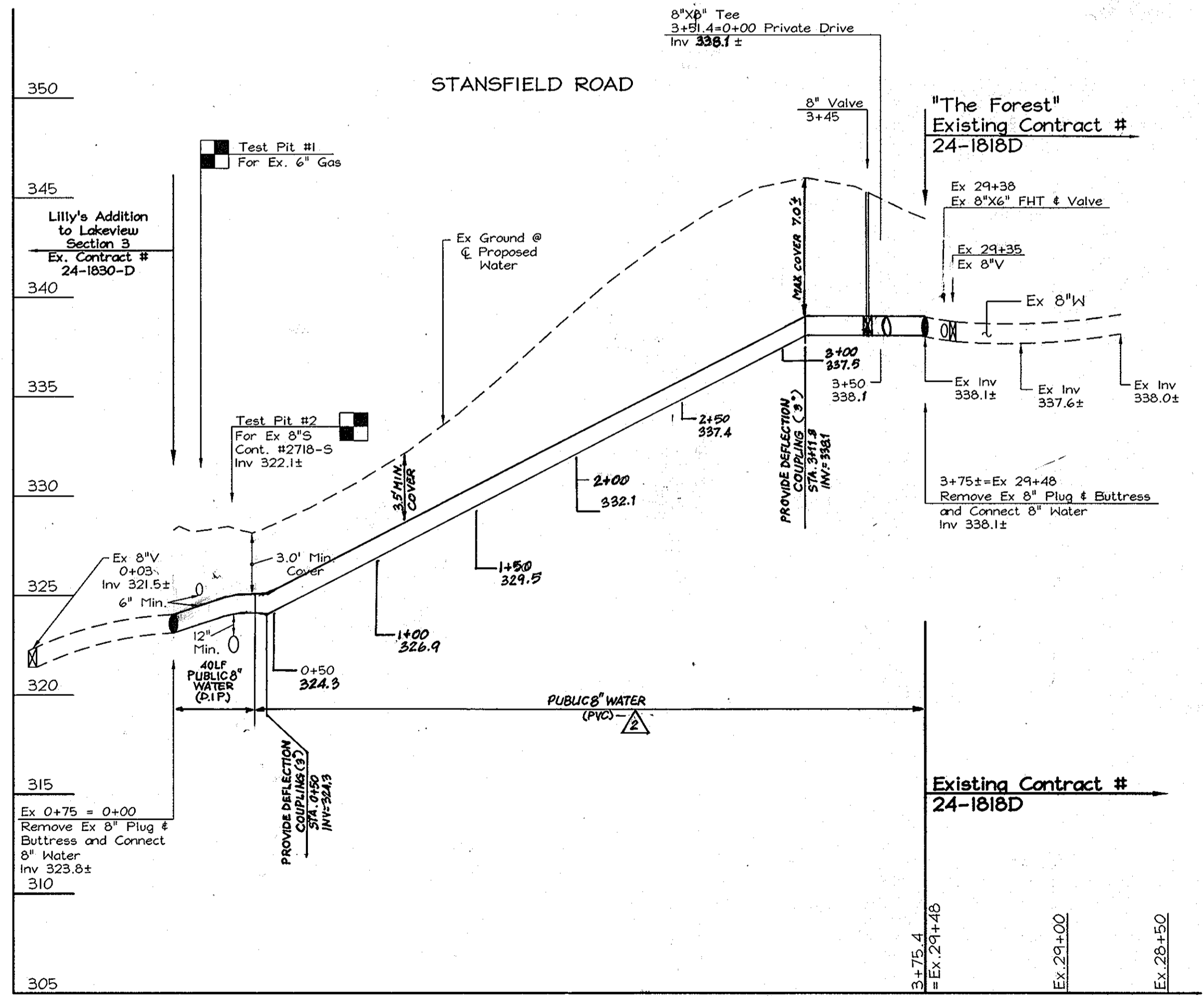


SEWER NOTES
 1. CENTERLINE SEWER MANHOLE CHANNEL RADII ARE NOT LESS THAN 2.5 TIMES THE PIPE DIAMETER.



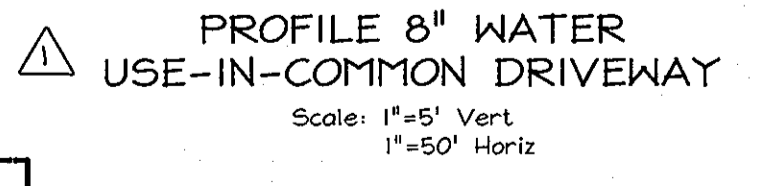
NOTES:
 - MAX WHC DEPTH = 6.0'
 - MINIMUM DISTANCE BETWEEN TWO (2) WHC = 7.5'

| Lot No. | Invert El. @ Sewer Main | 4" SHC Slope | Invert El. @ Easement | Minimum Easement | Basement Floor El. | First Floor El. |
|---------|-------------------------|--------------|-----------------------|------------------|--------------------|-----------------|
| 1 | 336.84 | 2.0% | 337.14 | 343.0 | 349.5 | 358.5 |
| 2 | 336.18 | 2.0% | 336.64 | 341.0 | 349.0 | 358.0 |
| 4 | 336.10 | 2.0% | 336.56 | 342.0 | 348.0 | 357.0 |
| 5 | 335.98 | 2.0% | 335.92 | 342.5 | 351.0 | 360.0 |
| 6 | 331.28 | 2.0% | 331.52 | 335.5 | 345.0 | 354.0 |
| 7 | 333.78 | 2.0% | 334.02 | 338.0 | 340.0 | 349.0 |



REVIEWED FOR HOWARD SOIL CONSERVATION DISTRICT AND MEETS TECHNICAL REQUIREMENTS.

THIS DEVELOPMENT PLAN IS APPROVED FOR SOIL EROSION AND SEDIMENT CONTROL BY THE HOWARD COUNTY SOIL CONSERVATION DISTRICT.



WATER NOTES
 1. MAX DEFLECTION IN D.I.P. JOINTS SHALL NOT EXCEED 4".
 2. NO JOINT DEFLECTIONS ALLOWED AT ANY FITTING.
 3. DWELLING UNITS SHALL HAVE INSIDE METERS.
 4. NO TREES WITHIN 5.0' OF WHC.
 5. MINIMUM SEPARATION BETWEEN PUBLIC WATER & SEWER HOUSE CONNECTIONS SHALL BE PER DETAIL (SECTION 5.4.C).
 6. EX GAS MAIN LOCATION IS APPROX. 3.5' BELOW SURFACE.

HOWARD SOIL CONSERVATION DISTRICT

DATE

DEPARTMENT OF PUBLIC WORKS

DEPARTMENT OF PLANNING & ZONING

DATE 1/16/09

SEDIMENT CONTROL MEASURES FOR THIS CONTRACT WILL BE IMPLEMENTED IN ACCORDANCE WITH SECTION 219 OF THE STANDARD SPECIFICATION AND THE APPROVED FINAL PLAN, F 08-179 F 09-035

LDE Inc.
 Engineers, Surveyors, Planners
 9250 Rumsig Road, Suite 106 Columbia, Maryland - 21045
 (410)715-1070 - (301)596-3424 - FAX (410)715-9540

| | |
|---------------|--|
| DESIGNED EDS | |
| DRAWN STB | |
| CHECKED BDB | |
| DATE 12/20/08 | |
| BY NO. | |

PLAN & PROFILE SHEET

600 SCALE MAP NO. 46 BLOCK 18

WATKINS' CHOICE

PHASE 1 - LOTS 1, 2, OPEN SPACE LOT 3 AND NON-BUILDABLE BULK PARCEL "A" & PHASE 2 - LOTS 4, 5, 6 AND 7; A RESUBDIVISION OF WATKINS' CHOICE - PHASE 1 NON-BUILDABLE BULK PARCEL "A"

TAX MAP 46 GRID NO. 18 - PARCEL 215
 6TH ELECTION DISTRICT HOWARD COUNTY, MARYLAND
 CONTRACT NO. 24 4492-D

SCALE 1"=50'
 SHEET 2 OF 2

P:\02-025-2\dwg\02-025-2-WBS2.dwg, FINAL WATER & SEWER PLAN, 12/16/08 09:57:05 AM