

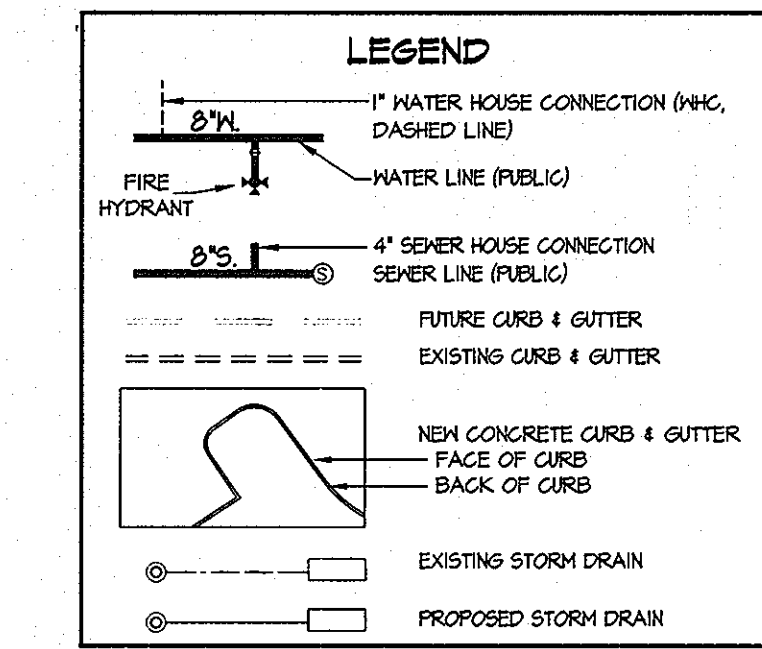
ITEMS	QUANTITIES ESTIMATED	AS-BUILT		
		QUANTITIES	TYPE	MANUFACTURER/SUPPLIER
6" WATER	49 LF	205 L.F.	CL 56 D.I.P.	AMERICAN PIPE
8" WATER MAIN	2,750 LF	2,801 L.F.	CL 54 155 D.I.P.	AMERICAN PIPE
1" WHC	157 LF	1,644 L.F.	TYPE K	
1" TWIN WHC	54 LF	30 L.F.	TYPE K	
8" x 8" TEE	8 EA.	8 EA.	D.I.P.	INDIA
8" 1/8 H.B.	4 EA.	4 EA.	D.I.P.	INDIA
8" 1/16 H.B.	5 EA.	5 EA.	D.I.P.	INDIA
8" 1/32 H.B.	1 EA.	1 EA.	D.I.P.	INDIA
8" x 6" FHT	7 EA.	6 EA.	D.I.P.	INDIA
8" VALVE	8 EA.	14 EA.	WYTON POWDER COAT	KENNEDY
6" VALVE	4 EA.	8 EA.	WYTON POWDER COAT	KENNEDY
FIRE HYDRANT	7 EA.	8 EA.	5 1/2"	MUELLER
8" SEWER MAIN	2,770 LF	2,500 L.F.	SDR 35	JAMES EAGLE
4" SBC	2,160 LF	1,834 L.F.	SDR 35	JAMES EAGLE
6" SBC	25 LF	0		
4" MANHOLE	24 EA.	20 EA.	RCP	
TYPE A DROP CONN.	1 EA.	1 EA.	TYPE B	
Type B Drop Conn.	1 EA.			

NAME OF UTILITY CONTRACTOR: F.W. WILSON, MARINUCCI, FOR PLEASANTS

SURVEY AND DRAFTING DIV. CHECKBOX: AS-BUILT DATE: 11-18-10

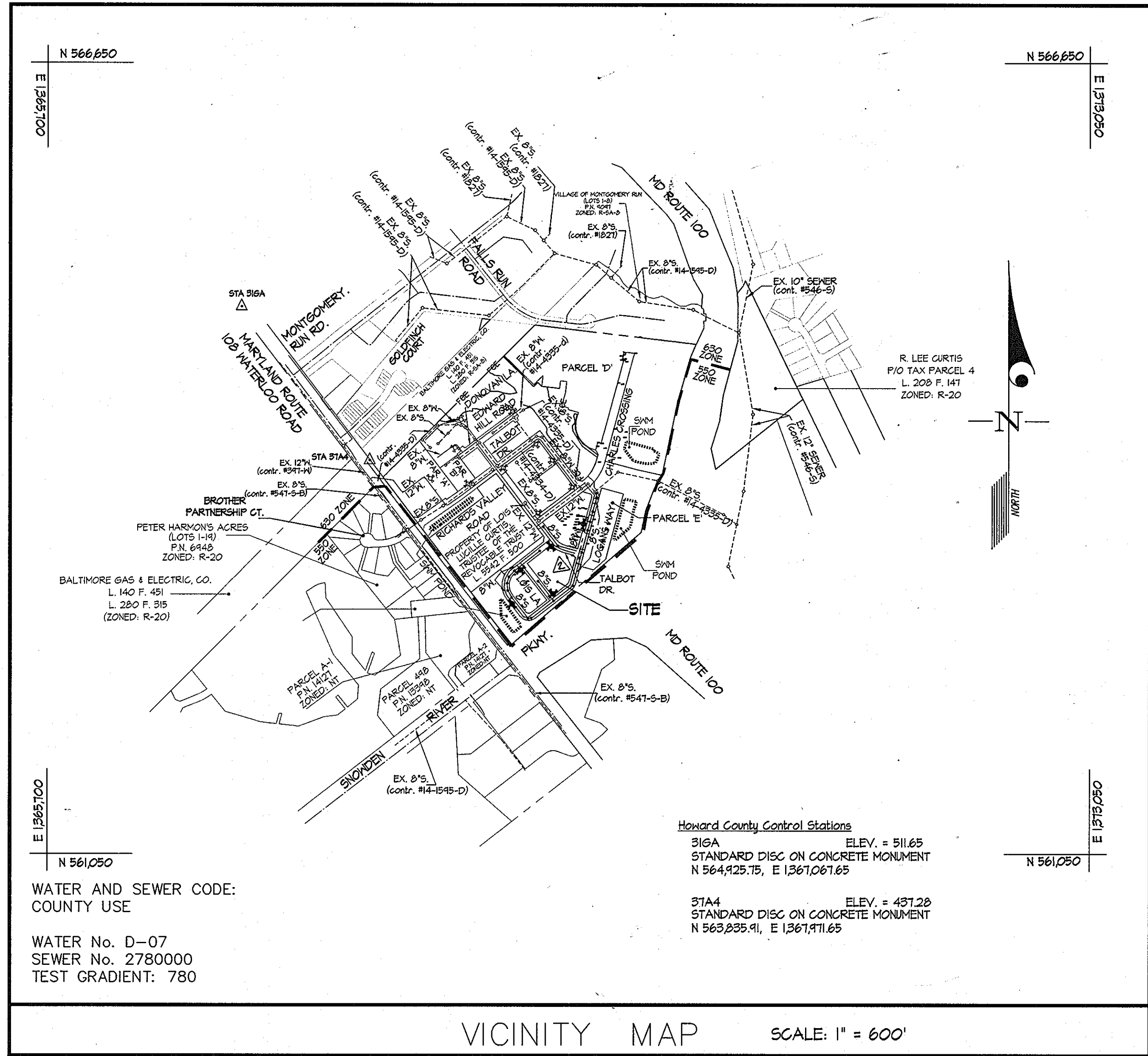
**NOTES:**

- ALL WATER HOUSE CONNECTIONS TO BE 1" WITH A 3/8" INSIDE METER UNLESS NOTED OTHERWISE, SEE HO. CO. STD. DETAIL W3.23.
- WATER HOUSE CONNECTIONS FOR LOTS C-209, C-210, C-257 & C-260 TO BE 1" TWIN WHC SEE HO. CO. STD. DETAIL W3.23.



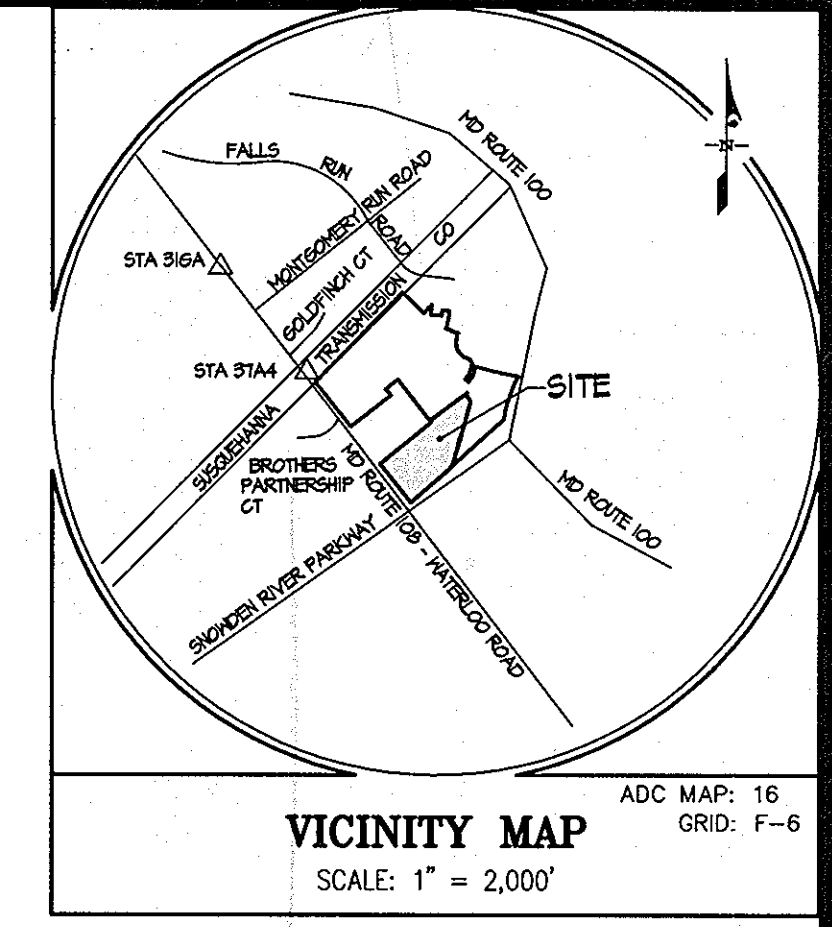
**SHEET INDEX**

- TITLE SHEET
- WATER AND SEWER EXTENSION PLAN
- WATER AND SEWER EXTENSION PROFILES
- Water and Sewer Extension Profiles



**VICINITY MAP** SCALE: 1" = 600'

TYPE OF BUILDING	RESIDENTIAL
NUMBER OF UNITS	109
NUMBER OF S.H.C.'s	2 S.H.C.'s 12-6" S.H.C.'s
NUMBER OF W.H.C.'s	6 S.H.C.'s / 2" Twin W.H.C.'s
AREA OF COMMERCIAL LOT/PARCEL	
SEWER SHED	DORSEY - PATAPESCO
PUMPING STATION	PATAPESCO WASTEWATER TREATMENT PLANT



- GENERAL NOTES**
- APPROXIMATE LOCATIONS OF EXISTING MAINS ARE SHOWN. THE CONTRACTOR SHALL TAKE ALL NECESSARY PRECAUTIONS TO PROTECT EXISTING MAINS AND SERVICES AND MAINTAIN UNINTERRUPTED SERVICE. ANY DAMAGE INCURRED SHALL BE REPAIRED IMMEDIATELY TO THE SATISFACTION OF THE ENGINEER AT THE CONTRACTOR'S EXPENSE.
  - AERIAL TOPOGRAPHIC FOR THIS PROJECT IS BY MCKENZIE SNYDER, INC. DATED 3/23/03.
  - HORIZONTAL AND VERTICAL SURVEY CONTROLS: THE COORDINATES SHOWN ON THE DRAWINGS ARE BASED ON MARYLAND STATE REFERENCE SYSTEM NAD '83/91 AS PROJECTED BY HOWARD COUNTY GEODETIC CONTROL STATIONS NO. 316A AND NO. 314A.
  - ALL VERTICAL CONTROLS ARE BASED ON NAVD '88. VERTICAL CONTROLS PROVIDED ON DRAWINGS ARE NGVD '29.
  - ALL PIPE ELEVATIONS SHOWN ARE INVERT ELEVATIONS UNLESS OTHERWISE NOTED ON THE PLANS.
  - CLEAR ALL UTILITIES BY A MINIMUM OF 12 INCHES. CLEAR ALL POLES BY 5'-0" MINIMUM OR TUNNEL AS REQUIRED UNLESS OTHERWISE NOTED. THE OWNER HAS CONTACTED THE UTILITY COMPANIES AND HAS MADE ARRANGEMENTS FOR BRACING OF POLES AS SHOWN ON THE DRAWINGS. IN THE EVENT THE CONTRACTOR'S WORK REQUIRES BRACING OF ADDITIONAL POLES, ANY COST INCURRED BY THE OWNER FOR THE BRACING OF ADDITIONAL POLES OR DAMAGES SHALL BE DEDUCTED FROM MONIES OWED THE CONTRACTOR. THE CONTRACTOR SHALL COORDINATE WITH THE UTILITY COMPANIES TO SCHEDULE THE BRACING OF THE POLES.
  - FOR DETAILS NOT SHOWN ON THE DRAWING, AND FOR MATERIALS AND CONSTRUCTION METHODS, USE HOWARD COUNTY DESIGN MANUAL, VOLUME IV, STANDARD SPECIFICATIONS AND DETAILS FOR CONSTRUCTION (LATEST EDITION). THE CONTRACTOR SHALL HAVE A COPY OF VOLUME IV ON THE JOB.
  - WHERE TEST PITS HAVE BEEN MADE ON EXISTING UTILITIES, THEY ARE NOTED BY THE SYMBOL @ AT THE LOCATIONS OF THE TEST PITS. A NOTE OR NOTES CONTAINING THE RESULTS OF THE TEST PIT OR PITS IS INCLUDED ON THE DRAWINGS. EXISTING UTILITIES IN THE VICINITY OF THE PROPOSED WORK FOR WHICH TEST PITS HAVE NOT BEEN DUG SHALL BE LOCATED BY THE CONTRACTOR TWO WEEKS IN ADVANCE OF CONSTRUCTION OPERATIONS AT HIS OWN EXPENSE.
  - THE CONTRACTOR SHALL NOTIFY THE FOLLOWING UTILITY COMPANIES OR AGENCIES AT LEAST FIVE WORKING DAYS BEFORE STARTING WORK ON THESE PLANS:
 

AT&T	1-800-252-1133
BGE (CONTRACTOR SERVICES)	410-850-4620
BGE (UNDER GROUND DAMAGE CONTROL)	410-855-1400
BUREAU OF UTILITIES	410-313-4900
COLONIAL PIPELINE CO.	410-745-1500
MISS UTILITY	1-800-257-TITI
STATE HIGHWAY ADMINISTRATION	410-531-5533
VERIZON	1-800-743-0033 / 410-224-9210
  - TREES AND SHRUBS ARE TO BE PROTECTED FROM DAMAGE TO THE MAXIMUM EXTENT. TREES AND SHRUBS LOCATED WITHIN THE CONSTRUCTION AREA STRIP ARE NOT TO BE REMOVED OR DAMAGED BY THE CONTRACTOR.
  - THE CONTRACTOR SHALL REMOVE TREES, STUMPS AND ROOTS ALONG THE LINE OF EXCAVATION. PAYMENT FOR SUCH REMOVAL SHALL BE INCLUDED IN THE UNIT PRICE BID FOR CONSTRUCTION OF THE MAIN.
  - THE CONTRACTOR SHALL NOTIFY THE BUREAU OF HIGHWAYS, HOWARD COUNTY, AT (410)-313-7450 AT LEAST FIVE WORKING DAYS BEFORE OPEN CUTTING OR BORING/JACKING OF ANY COUNTY ROAD FOR LAYING WATER/SEWER MAINS OR HOUSE CONNECTIONS. THE APPROVAL OF THESE DRAWINGS WILL CONSTITUTE COMPLIANCE WITH DPH REQUIREMENTS PER SECTION 18.114(a) OF THE HOWARD COUNTY CODE.

- PART II - WATER**
- ALL MAINS SHALL BE D.I.P. CLASS 54 UNLESS OTHERWISE NOTED.
  - TOPS OF ALL WATER MAINS SHALL HAVE A MINIMUM OF 3'-6" OF COVER UNLESS OTHERWISE NOTED.
  - VALVES ADJACENT TO TEES SHALL BE STRAPPED TO TEES.
  - ALL FITTINGS SHALL BE BUTTRESSED OR ANCHORED WITH CONCRETE IN ACCORDANCE WITH STANDARD DETAILS UNLESS OTHERWISE PROVIDED FOR ON THE DRAWINGS.
  - FIRE HYDRANTS SHALL BE SET TO THE BURY LINE ELEVATIONS SHOWN ON THE DRAWINGS. ALL FIRE HYDRANTS SHALL BE INSTALLED IN ACCORDANCE WITH STANDARD DETAILS. THE SOIL AROUND THE FIRE HYDRANT SHALL BE COMPACTED IN ACCORDANCE WITH SECTION 1000 AND SECTION 1005 OF THE STANDARD SPECIFICATIONS.
  - THE CONTRACTOR SHALL NOT OPERATE ANY WATER MAIN VALVES ON THE EXISTING WATER SYSTEM.
- PART III - SEWER**
- ALL SEWER MAINS SHALL BE D.I.P. OR P.V.C. UNLESS OTHERWISE NOTED.
  - ALL MANHOLES SHALL BE 4'-0" INSIDE DIAMETER UNLESS OTHERWISE NOTED.
  - FORCE MAINS SHALL BE D.I.P. ONLY.
  - MANHOLES SHOWN WITH THE 12" AND 16" WALLS ARE FOR BRICK MANHOLES ONLY.
  - MANHOLES DESIGNATED M.T. IN PLAN AND PROFILE SHALL HAVE WATERTIGHT FRAME AND COVER, STANDARD DETAIL G5.52. WHERE WATERTIGHT MANHOLE FRAMES AND COVERS ARE USED, SET TOP OF FRAME 1'-6" ABOVE FINISHED GRADE UNLESS OTHERWISE NOTED ON THE DRAWINGS.
  - HOUSE(S) WITH THE SYMBOL "C.N.S." INDICATES THE CELLAR CANNOT BE SERVED.

**CONTRACT No. 14-4484-D**  
**SHIPLEY'S GRANT - PHASE 3**

Lot 9 C-180 Thru 186, C-219 Thru C-222, C-250 Thru C-264  
 C-340 Thru C-340, & C-302 Thru C-304, C-312 Thru C-315, C-324 Thru C-344, C-310 & C-311  
 Open Space Lots C-207, C-330, C-210, C-331, C-209 & C-345  
 Common Open Space Lots C-332, C-301 & C-333 & Parcel E-4

**HOWARD COUNTY, MARYLAND**  
**DEPARTMENT OF PUBLIC WORKS**

**AS BUILT**  
 BY: DF DATE: 11-18-10

Sediment Control Measures will be implemented in accordance with Section 219 of the Specifications & with Road Drawings Plan F-08-006; Drawings for Sediment & Erosion Control.

REVIEWED FOR HOWARD SOIL CONSERVATION DISTRICT AND MEETS TECHNICAL REQUIREMENTS

U.S.D.A. NATURAL RESOURCES CONSERVATION SERVICE

APPROVED: [Signature] DATE: 11/1/08

DEVELOPER:  
 BA WATERLOO TOWNHOMES, LLC  
 C/O BOZZUTO HOMES, INC.  
 7850 WALKER DRIVE SUITE 400  
 GREENBELT, MARYLAND 20770  
 ATTN: DUNCAN SLIDELL  
 301-623-1525

DEPARTMENT OF PUBLIC WORKS  
 HOWARD COUNTY, MARYLAND

DEPARTMENT OF PLANNING AND ZONING  
 HOWARD COUNTY, MARYLAND

**GLWGUTSCHICK LITTLE & WEBBER, P.A.**  
 CIVIL ENGINEERS, LAND SURVEYORS, LAND PLANNERS, LANDSCAPE ARCHITECTS  
 3509 NATIONAL DRIVE - SUITE 250 - BURTONSVILLE OFFICE PARK  
 BURTONSVILLE, MARYLAND 20886  
 TEL: 301-421-4024 BALT: 410-800-1820 DC/VA: 301-889-2524 FAX: 301-421-4186

PROFESSIONAL CERTIFICATION  
 I HEREBY CERTIFY THAT THESE PLANS WERE PREPARED OR APPROVED BY ME, AND THAT I AM A DULY LICENSED PROFESSIONAL ENGINEER UNDER THE LAWS OF THE STATE OF MARYLAND, LICENSE NO. 14483, EXPIRATION DATE: MAY 21, 2012

DES:	WJ	MJT	9/1	Update Lot Information	4/2/11
DRN: <td>WJ</td> <td></td> <td></td> <td>Rev. Quantities Box, Plot, Index, Unit</td> <td>8/1/11</td>	WJ			Rev. Quantities Box, Plot, Index, Unit	8/1/11
CHK: <td>MJT</td> <td></td> <td></td> <td>Rev. Quantities &amp; Title Block</td> <td>10/2/10</td>	MJT			Rev. Quantities & Title Block	10/2/10
DATE: <td>WJ</td> <td></td> <td></td> <td>Rev. Lot Notes &amp; House Conn. to Per Plat E-10-200</td> <td>7/1/10</td>	WJ			Rev. Lot Notes & House Conn. to Per Plat E-10-200	7/1/10
DATE: <td>WJ</td> <td></td> <td></td> <td>Rev. Title Block to Match Plat</td> <td>11/12/09</td>	WJ			Rev. Title Block to Match Plat	11/12/09

TITLE SHEET  
 SCALE: AS SHOWN

**SHIPLEY'S GRANT - PHASE 3**  
 Lots C-180 Thru C-186, C-219 Thru C-222, C-250 Thru C-264  
 C-340 Thru C-340, & C-302 Thru C-304, C-312 Thru C-315  
 C-324 Thru C-344, C-310 & C-311  
 Open Space Lots C-207, C-330, C-210, C-331, C-209 & C-345  
 Common Open Space Lots C-332, C-301 & C-333 & Parcel E-4  
 HOWARD COUNTY, MARYLAND  
 ELECTION DISTRICT No. 1  
 CONTRACT No. 14-4484-D

GLW FILE No. 03006  
 SCALE AS SHOWN  
 SHEET 1 OF 4  
 ZONING: R-A-15  
 TAX MAP: 57 E-1



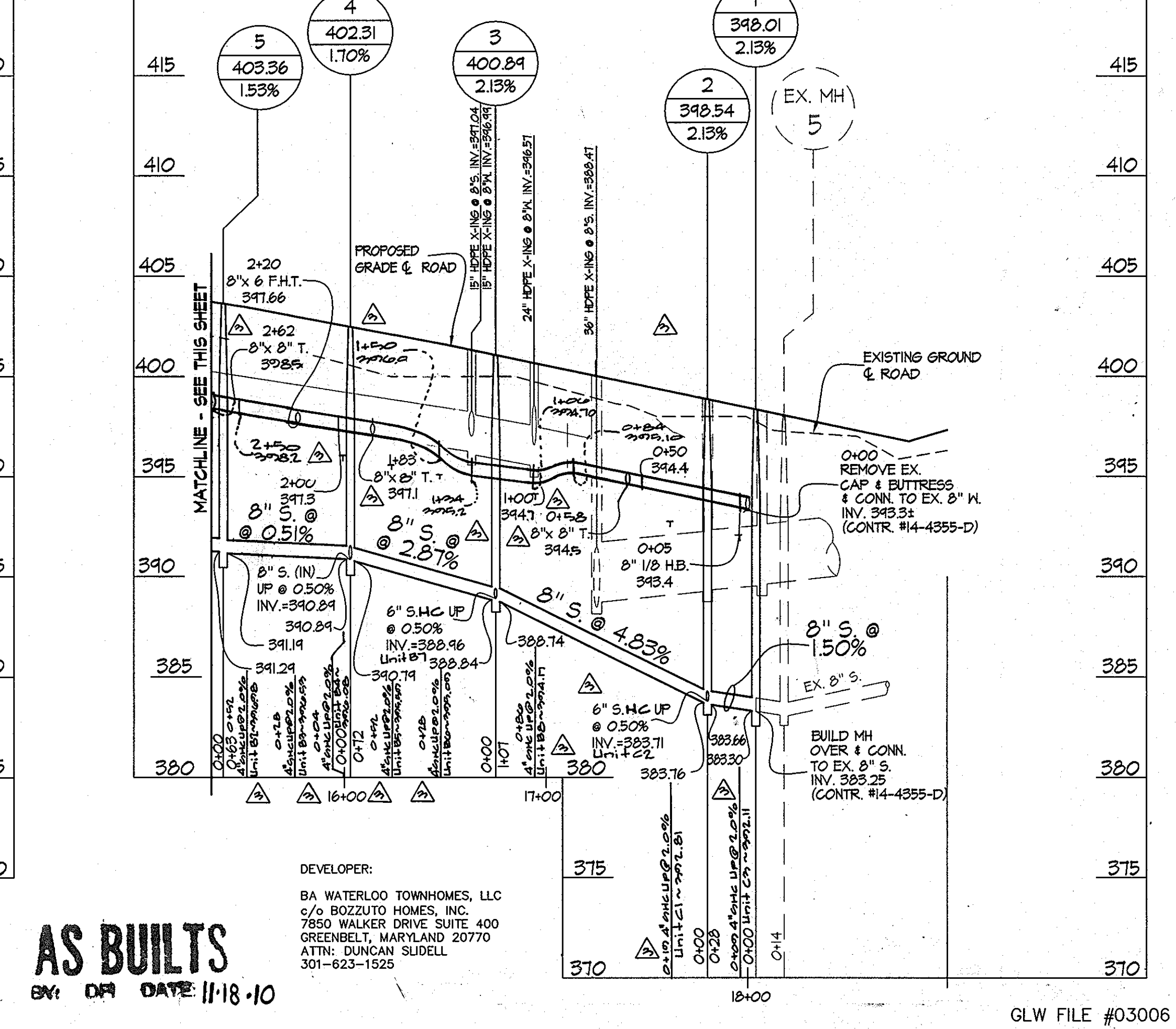
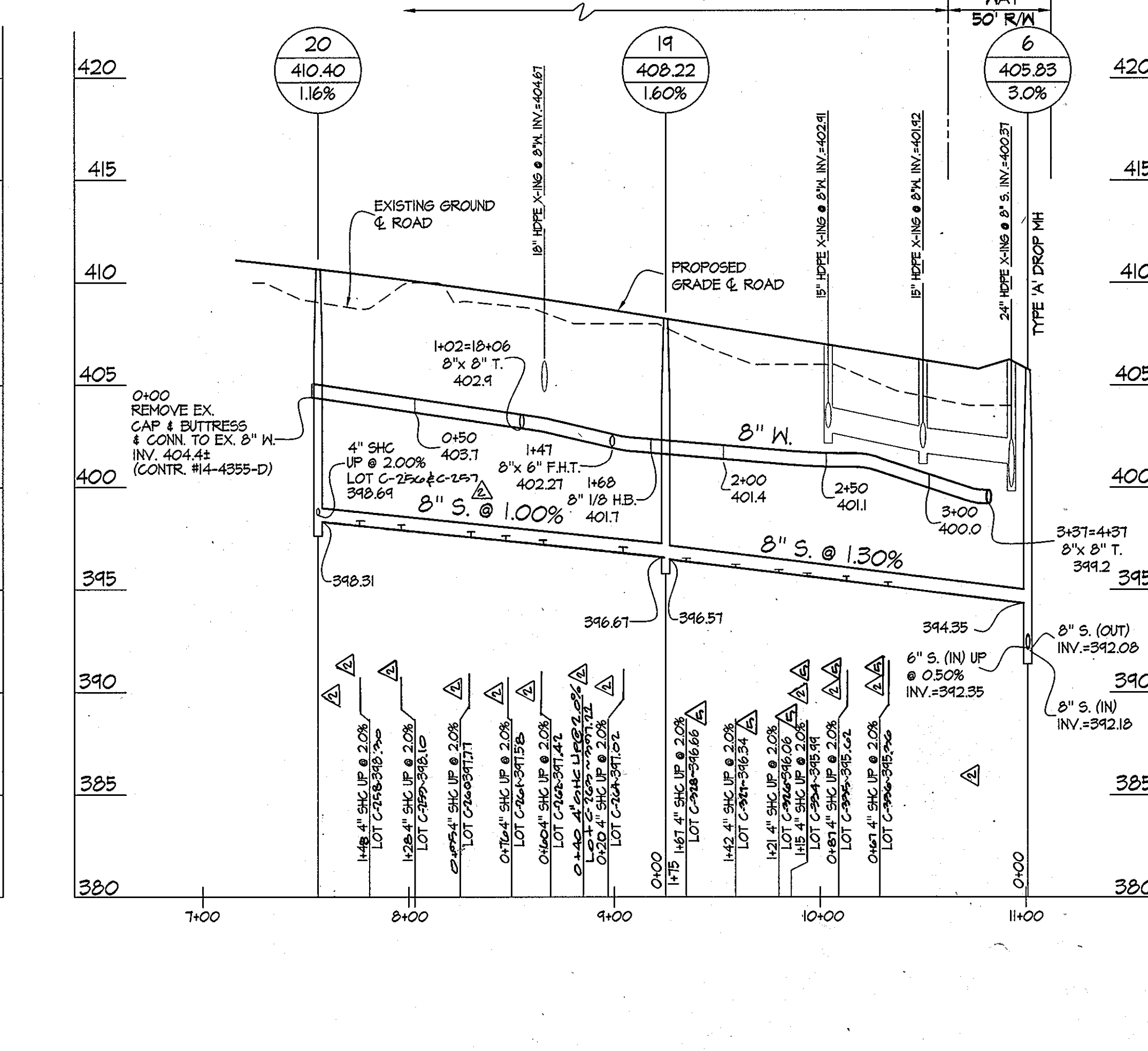
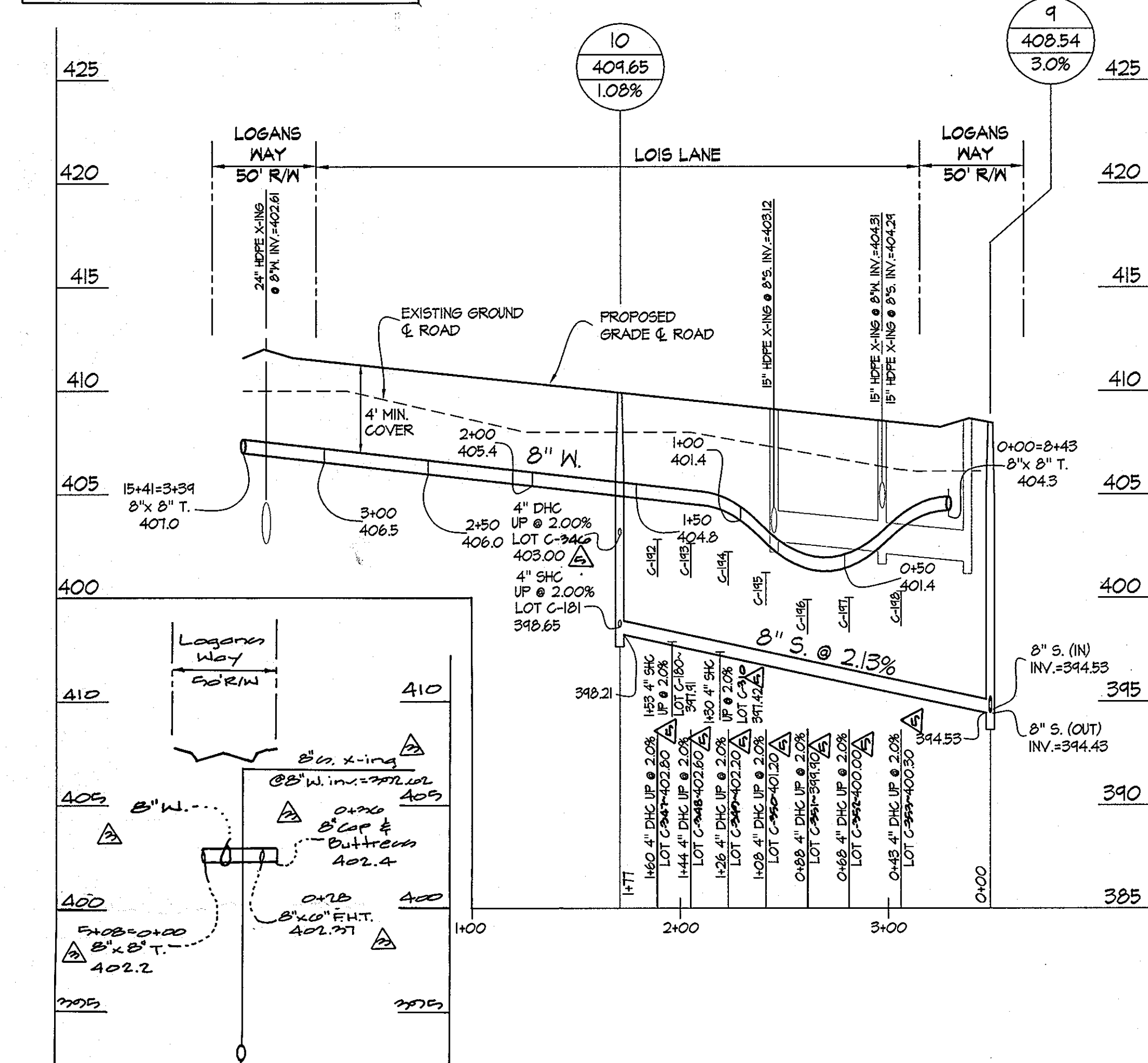
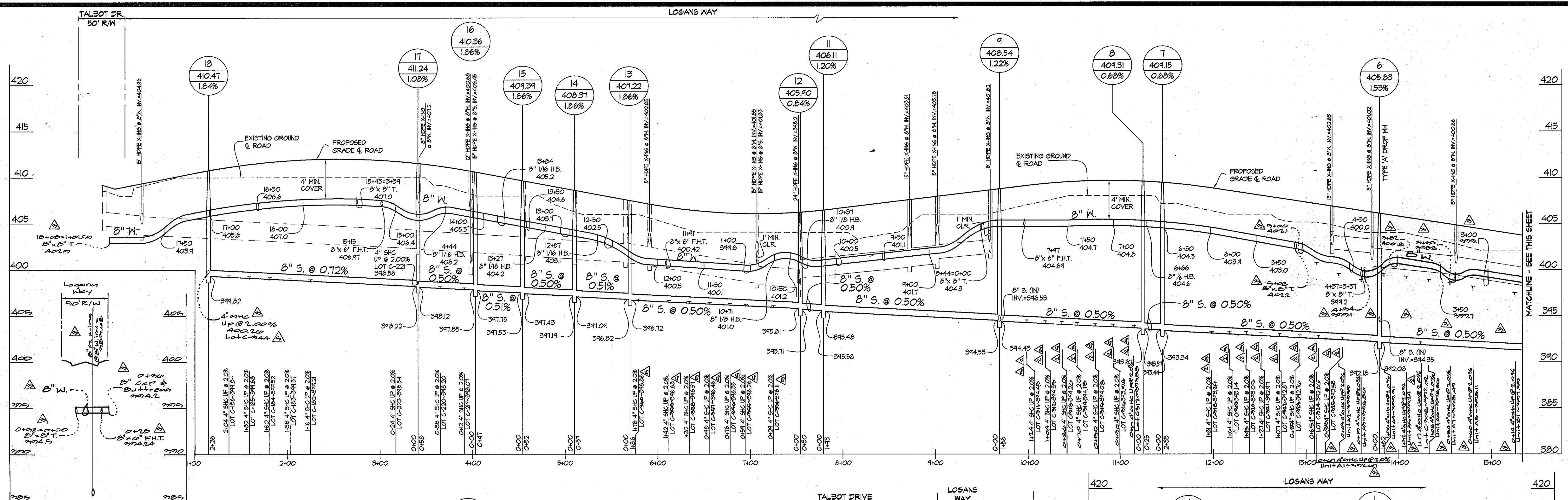
WATER FITTING LOCATIONS LOGANS WAY			
FITTING No.	FITTING TYPE	North/ East/ Station	Offset
1	8" 1/2 HB	1716	4.0' LT.
2	8" 1/2 HB	N 00° 30' 30" W E 1700.00	4.0' RT.
3	8" 1/2 HB	N 00° 30' 30" W E 1700.00	4.0' RT.
4	8" x 8" TEE	1714	10.0' LT.
5	8" x 8" FHT	1714	10.1' RT.
6	FIRE HYDRANT	1715	10.1' RT.
7	8" CAP	1714	26.0' RT.
8	8" x 8" TEE	1614	10.0' LT.
9	8" CAP	1614	25.0' LT.
10	FIRE HYDRANT	1577	10.1' LT.
11	8" x 8" TEE	1575	10.0' LT.
12	8" CAP	1575	25.0' LT.
13	8" 1/2 HB	N 00° 30' 30" W E 1700.00	4.0' RT.
14	8" 1/2 HB	N 00° 30' 30" W E 1700.00	4.0' RT.

WATER FITTING LOCATIONS LOGANS WAY			
FITTING No.	FITTING TYPE	Station	Offset
15	8" x 8" TEE	2475	10.0' RT.
16	8" x 8" FHT	3103	10.0' RT.
17	FIRE HYDRANT	3103	10.1' LT.
18	8" 1/2 HB	3711	12.4' RT.
19	8" 1/2 HB	4427	11.9' RT.
20	8" 1/2 HB	4820	12.4' RT.
21	8" 1/2 HB	5325	12.4' RT.
22	8" x 8" FHT	6109	10.0' RT.
23	FIRE HYDRANT	6109	10.1' RT.
24	8" 1/2 HB	7126	12.0' RT.
25	8" 1/2 HB	7455	5.7' RT.
26	8" x 8" TEE	9444	10.0' LT.
27	8" x 8" FHT	9446	10.0' LT.
28	FIRE HYDRANT	9446	10.1' LT.
29	8" 1/2 HB	11128	5.5' LT.
30	8" x 8" TEE	12184	10.0' LT.
31	8" x 8" FHT	12184	10.1' RT.
32	FIRE HYDRANT	12144	10.1' RT.
33	8" CAP	12184	26.0' RT.

WATER FITTING LOCATIONS TALBOT DRIVE			
FITTING No.	FITTING TYPE	Station	Offset
34	8" x 8" TEE	10182	10.0' RT.
35	8" 1/2 HB	9105	13.1' RT.
36	8" x 8" FHT	8144	11.4' RT.
37	FIRE HYDRANT	8146	10.1' RT.
38	8" x 8" TEE	8155	10.0' RT.

MINIMUM CELLAR ELEVATIONS		INV. @ R/WESMT.	
LOT NO.	ELEVATION	LOT NO.	ELEVATION
C-256	402.01	C-345	348.71
C-257	402.02	C-346	348.72
C-258	401.94	C-347	348.73
C-259	401.74	C-348	348.74
C-260	401.41	C-349	348.75
C-261	401.22	C-350	348.76
C-262	401.06	C-351	348.77
C-263	400.86	C-352	348.78
C-264	400.51	C-353	348.79
C-265	400.31	C-354	348.80
C-266	400.12	C-355	348.81
C-267	399.96	C-356	348.82
C-268	399.81	C-357	348.83
C-269	399.67	C-358	348.84
C-270	399.53	C-359	348.85
C-271	399.46	C-360	348.86
C-272	399.37	C-361	348.87
C-273	399.27	C-362	348.88
C-274	399.16	C-363	348.89
C-275	399.04	C-364	348.90
C-276	398.91	C-365	348.91
C-277	398.77	C-366	348.92
C-278	398.62	C-367	348.93
C-279	398.47	C-368	348.94
C-280	398.31	C-369	348.95
C-281	398.14	C-370	348.96
C-282	397.97	C-371	348.97
C-283	397.79	C-372	348.98
C-284	397.61	C-373	348.99
C-285	397.42	C-374	349.00
C-286	397.23	C-375	349.01
C-287	397.04	C-376	349.02
C-288	396.85	C-377	349.03
C-289	396.66	C-378	349.04
C-290	396.46	C-379	349.05
C-291	396.27	C-380	349.06
C-292	396.07	C-381	349.07
C-293	395.87	C-382	349.08
C-294	395.67	C-383	349.09
C-295	395.47	C-384	349.10
C-296	395.27	C-385	349.11
C-297	395.07	C-386	349.12
C-298	394.87	C-387	349.13
C-299	394.67	C-388	349.14
C-300	394.47	C-389	349.15
C-301	394.27	C-390	349.16
C-302	394.07	C-391	349.17
C-303	393.87	C-392	349.18
C-304	393.67	C-393	349.19
C-305	393.47	C-394	349.20
C-306	393.27	C-395	349.21
C-307	393.07	C-396	349.22
C-308	392.87	C-397	349.23
C-309	392.67	C-398	349.24
C-310	392.47	C-399	349.25
C-311	392.27	C-400	349.26
C-312	392.07	C-401	349.27
C-313	391.87	C-402	349.28
C-314	391.67	C-403	349.29
C-315	391.47	C-404	349.30
C-316	391.27	C-405	349.31
C-317	391.07	C-406	349.32
C-318	390.87	C-407	349.33
C-319	390.67	C-408	349.34
C-320	390.47	C-409	349.35
C-321	390.27	C-410	349.36
C-322	390.07	C-411	349.37
C-323	389.87	C-412	349.38
C-324	389.67	C-413	349.39
C-325	389.47	C-414	349.40
C-326	389.27	C-415	349.41
C-327	389.07	C-416	349.42
C-328	388.87	C-417	349.43
C-329	388.67	C-418	349.44
C-330	388.47	C-419	349.45
C-331	388.27	C-420	349.46
C-332	388.07	C-421	349.47
C-333	387.87	C-422	349.48
C-334	387.67	C-423	349.49
C-335	387.47	C-424	349.50
C-336	387.27	C-425	349.51
C-337	387.07	C-426	349.52
C-338	386.87	C-427	349.53
C-339	386.67	C-428	349.54
C-340	386.47	C-429	349.55
C-341	386.27	C-430	349.56
C-342	386.07	C-431	349.57
C-343	385.87	C-432	349.58
C-344	385.67	C-433	349.59
C-345	385.47	C-434	349.60
C-346	385.27	C-435	349.61
C-347	385.07	C-436	349.62
C-348	384.87	C-437	349.63
C-349	384.67	C-438	349.64
C-350	384.47	C-439	349.65
C-351	384.27	C-440	349.66
C-352	384.07	C-441	349.67
C-353	383.87	C-442	349.68
C-354	383.67	C-443	349.69
C-355	383.47	C-444	349.70
C-356	383.27	C-445	349.71
C-357	383.07	C-446	349.72
C-358	382.87	C-447	349.73
C-359	382.67	C-448	349.74
C-360	382.47	C-449	349.75
C-361	382.27	C-450	349.76
C-362	382.07	C-451	349.77
C-363	381.87	C-452	349.78
C-364	381.67	C-453	349.79
C-365	381.47	C-454	349.80
C-366	381.27	C-455	349.81
C-367	381.07	C-456	349.82
C-368	380.87	C-457	349.83
C-369	380.67	C-458	349.84
C-370	380.47	C-459	349.85
C-371	380.27	C-460	349.86
C-372	380.07	C-461	349.87
C-373	379.87	C-462	349.88
C-374	379.67	C-463	349.89
C-375	379.47	C-464	349.90
C-376	379.27	C-465	349.91
C-377	379.07	C-466	349.92
C-378	378.87	C-467	349.93
C-379	378.67	C-468	349.94
C-380	378.47	C-469	349.95
C-381	378.27	C-470	349.96
C-382	378.07	C-471	349.97
C-383	377.87	C-472	349.98
C-384	377.67	C-473	349.99
C-385	377.47	C-474	350.00
C-386	377.27	C-475	350.01
C-387	377.07	C-476	350.02
C-388	376.87	C-477	350.03
C-389	376.67	C-478	350.04
C-390	376.47	C-479	350.05
C-391	376.27	C-480	350.06
C-392	376.07	C-481	350.07
C-393	375.87	C-482	350.08
C-394	375.67	C-483	350.09
C-395	375.47	C-484	350.10
C-396	375.27	C-485	350.11
C-397	375.07	C-486	350.12
C-398	374.87	C-487	350.13
C-399	374.67	C-488	350.14
C-400	374.47	C-489	350.15
C-401	374.27	C-490	350.16
C-402	374.07	C-491	350.17
C-403	373.87	C-492	350.18
C-404	373.67	C-493	350.19
C-405	373.47	C-494	350.20
C-406	373.27	C-495	350.21
C-407	373.07	C-496	350.22
C-408	372.87	C-497	350.23
C-409	372.67	C-498	350.24
C-410	372.47	C-499	350.25
C-411	372.27	C-500	350.26
C-412	372.07	C-501	350.27
C-413	371.87	C-502	350.28
C-414	371.67	C-503	350.29
C-415	371.47	C-504	350.30
C-416	371.27	C-505	350.31
C-417	371.07	C-506	350.32
C-418	370.87	C-507	350.33
C-419	370.67	C-508	350.34
C-420	370.47	C-509	350.35
C-421	370.27	C-510	350.36
C-422	370.07	C-511	350.37
C-423	369.87	C-512	350.38
C-424	369.67	C-513	350.39
C-425	369.47	C-514	350.40
C-426	369.27	C-515	350.41
C-427	369.07	C-516	350.42
C-428	368.87	C-517	350.43
C-429	368.67	C-518	350.44
C-430	368.47	C-519	350.45
C-431	368.27	C-520	350.46
C-432	368.07	C-521	350.47
C-433	367.87	C-522	350.48
C-434	367.67	C-523	350.49
C-435	367.47	C-524	350.50
C-436	367.27	C-525	350.51
C-437	367.07	C-526	350.52
C-438	366.87	C-527	350.53
C-439	366.67	C-528	350.54
C-440	366.47	C-529	350.55
C-441	366.27	C-530	350.56
C-442	366.07	C-531	350.57
C-443	365.87	C-532	350.58
C-444	365.67	C-533	350.59
C-445	365.47	C-534	350.60
C-446	365.27	C-535	350.61
C-447	365.07	C-536	350.62
C-448	364.87	C-537	350.63
C-449	364.67	C-538	350.64
C-450	364.47	C-539	350.65
C-451	364.27	C-540	350.66
C-452	364.07	C-541	350.67
C-453	363.87	C-542	350.68
C-454	363.67	C-543	350.69
C-455	363.47	C-544	350.70
C-456	363.27	C-545	350.71
C-457	363.07	C-546	350.72
C-458	362.87	C-547	350.73
C-459	362.67	C-548	350.74
C-460	362.47	C-549	350.75
C-461	362.27	C-550	350.76
C-462	362.07	C-551	350.77
C-463	361.87	C-552	350.78
C-464	361.67	C-553	350.79
C-465	361.47	C-554	350.80
C-466	361.27	C-555	350.81
C-467	361.07	C-556	350.82
C-468	360.87	C-557	350.83
C-469	360.67	C-558	350.84
C-470	360.47	C-559	350.85
C-471	360.27	C-560	350.86
C-472	360.07	C-561	350.87
C-473	359.87	C-562	350.88
C-474	359.67	C-563	350.89
C-475	359.47	C-564	350.90
C-476	359.27	C-565	350.91
C-477	359.07	C-566	350.92
C-478	358.87	C-567	350.93
C-479	358.67	C-568	350.94
C-480	358.47	C-569	350.95
C-481	358.27	C-570	350.96
C-482	35		





**AS BUILTS**  
BY: DJM DATE: 11-18-10

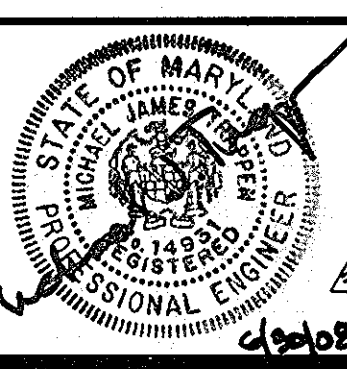
DEVELOPER:  
BA WATERLOO TOWNHOMES, LLC  
c/o BOZZUTO HOMES, INC.  
7850 WALKER DRIVE SUITE 400  
GREENBELT, MARYLAND 20770  
ATTN: DUNCAN SULLIVAN  
301-823-1525

DEPARTMENT OF PUBLIC WORKS  
HOWARD COUNTY, MARYLAND  
Slah C. Green 7/15/08  
CHIEF, BUREAU OF UTILITIES DATE

DEPARTMENT OF PLANNING AND ZONING  
HOWARD COUNTY, MARYLAND  
M. J. P. 8/12/08  
CHIEF, DEVELOPMENT ENGINEERING DIVISION DATE

**GLWGUTSCHICK LITTLE & WEBER, PA.**  
CIVIL ENGINEERS, LAND SURVEYORS, LAND PLANNERS, LANDSCAPE ARCHITECTS  
3509 NATIONAL DRIVE - SUITE 250 - BURTONSVILLE OFFICE PARK  
BURTONSVILLE, MARYLAND 20866  
TEL: 301-421-4024 BALT: 410-880-1820 DC/VA: 301-889-2524 FAX: 301-421-4186

PROFESSIONAL CERTIFICATION  
I HEREBY CERTIFY THAT THESE PLANS WERE PREPARED OR APPROVED BY ME, AND THAT I AM A DULY LICENSED PROFESSIONAL ENGINEER UNDER THE LAWS OF THE STATE OF MARYLAND, LICENSE NO. 14421, EXPIRATION DATE: MAY 26, 2012



DES:	DRN:	CHK:	DATE:	BY:	NO:	REVISION	DATE
WBJ	WBJ	MJT	11/18/10	NO	1	Update Lot Information	4/12/11
					2	Revised Number	2/10/11
					3	Address, House Conn. & Box Unit	1/10/11
					4	Rev. Lot Notes Added	7/10/11
					5	Rev. Lot Notes Added	11/10/10
					6	Rev. Title Block To Match Plat	11/10/10

WATER and SEWER EXTENSION PROFILES  
SCALE: 1" = 50' Horiz.  
1" = 5' Vert.

**SHIPLEY'S GRANT - PHASE 3**  
Lots C-180 Thru C-189, C-210 Thru C-222, C-250 Thru C-264  
C-265 Thru C-270, C-271 Thru C-284, C-310 Thru C-325  
Open Space Lots C-201, C-202, C-210, C-211, C-212, C-213, C-214, C-215, C-216, C-217, C-218, C-219, C-220, C-221, C-222, C-223, C-224, C-225, C-226, C-227, C-228, C-229, C-230, C-231, C-232, C-233, C-234, C-235, C-236, C-237, C-238, C-239, C-240, C-241, C-242, C-243, C-244, C-245, C-246, C-247, C-248, C-249, C-250, C-251, C-252, C-253, C-254, C-255, C-256, C-257, C-258, C-259, C-260, C-261, C-262, C-263, C-264, C-265, C-266, C-267, C-268, C-269, C-270, C-271, C-272, C-273, C-274, C-275, C-276, C-277, C-278, C-279, C-280, C-281, C-282, C-283, C-284, C-285, C-286, C-287, C-288, C-289, C-290, C-291, C-292, C-293, C-294, C-295, C-296, C-297, C-298, C-299, C-300, C-301, C-302, C-303, C-304, C-305, C-306, C-307, C-308, C-309, C-310, C-311, C-312, C-313, C-314, C-315, C-316, C-317, C-318, C-319, C-320, C-321, C-322, C-323, C-324, C-325, C-326, C-327, C-328, C-329, C-330, C-331, C-332, C-333, C-334, C-335, C-336, C-337, C-338, C-339, C-340, C-341, C-342, C-343, C-344, C-345, C-346, C-347, C-348, C-349, C-350, C-351, C-352, C-353, C-354, C-355, C-356, C-357, C-358, C-359, C-360, C-361, C-362, C-363, C-364, C-365, C-366, C-367, C-368, C-369, C-370, C-371, C-372, C-373, C-374, C-375, C-376, C-377, C-378, C-379, C-380, C-381, C-382, C-383, C-384, C-385, C-386, C-387, C-388, C-389, C-390, C-391, C-392, C-393, C-394, C-395, C-396, C-397, C-398, C-399, C-400, C-401, C-402, C-403, C-404, C-405, C-406, C-407, C-408, C-409, C-410, C-411, C-412, C-413, C-414, C-415, C-416, C-417, C-418, C-419, C-420, C-421, C-422, C-423, C-424, C-425, C-426, C-427, C-428, C-429, C-430, C-431, C-432, C-433, C-434, C-435, C-436, C-437, C-438, C-439, C-440, C-441, C-442, C-443, C-444, C-445, C-446, C-447, C-448, C-449, C-450, C-451, C-452, C-453, C-454, C-455, C-456, C-457, C-458, C-459, C-460, C-461, C-462, C-463, C-464, C-465, C-466, C-467, C-468, C-469, C-470, C-471, C-472, C-473, C-474, C-475, C-476, C-477, C-478, C-479, C-480, C-481, C-482, C-483, C-484, C-485, C-486, C-487, C-488, C-489, C-490, C-491, C-492, C-493, C-494, C-495, C-496, C-497, C-498, C-499, C-500, C-501, C-502, C-503, C-504, C-505, C-506, C-507, C-508, C-509, C-510, C-511, C-512, C-513, C-514, C-515, C-516, C-517, C-518, C-519, C-520, C-521, C-522, C-523, C-524, C-525, C-526, C-527, C-528, C-529, C-530, C-531, C-532, C-533, C-534, C-535, C-536, C-537, C-538, C-539, C-540, C-541, C-542, C-543, C-544, C-545, C-546, C-547, C-548, C-549, C-550, C-551, C-552, C-553, C-554, C-555, C-556, C-557, C-558, C-559, C-560, C-561, C-562, C-563, C-564, C-565, C-566, C-567, C-568, C-569, C-570, C-571, C-572, C-573, C-574, C-575, C-576, C-577, C-578, C-579, C-580, C-581, C-582, C-583, C-584, C-585, C-586, C-587, C-588, C-589, C-590, C-591, C-592, C-593, C-594, C-595, C-596, C-597, C-598, C-599, C-600, C-601, C-602, C-603, C-604, C-605, C-606, C-607, C-608, C-609, C-610, C-611, C-612, C-613, C-614, C-615, C-616, C-617, C-618, C-619, C-620, C-621, C-622, C-623, C-624, C-625, C-626, C-627, C-628, C-629, C-630, C-631, C-632, C-633, C-634, C-635, C-636, C-637, C-638, C-639, C-640, C-641, C-642, C-643, C-644, C-645, C-646, C-647, C-648, C-649, C-650, C-651, C-652, C-653, C-654, C-655, C-656, C-657, C-658, C-659, C-660, C-661, C-662, C-663, C-664, C-665, C-666, C-667, C-668, C-669, C-670, C-671, C-672, C-673, C-674, C-675, C-676, C-677, C-678, C-679, C-680, C-681, C-682, C-683, C-684, C-685, C-686, C-687, C-688, C-689, C-690, C-691, C-692, C-693, C-694, C-695, C-696, C-697, C-698, C-699, C-700, C-701, C-702, C-703, C-704, C-705, C-706, C-707, C-708, C-709, C-710, C-711, C-712, C-713, C-714, C-715, C-716, C-717, C-718, C-719, C-720, C-721, C-722, C-723, C-724, C-725, C-726, C-727, C-728, C-729, C-730, C-731, C-732, C-733, C-734, C-735, C-736, C-737, C-738, C-739, C-740, C-741, C-742, C-743, C-744, C-745, C-746, C-747, C-748, C-749, C-750, C-751, C-752, C-753, C-754, C-755, C-756, C-757, C-758, C-759, C-760, C-761, C-762, C-763, C-764, C-765, C-766, C-767, C-768, C-769, C-770, C-771, C-772, C-773, C-774, C-775, C-776, C-777, C-778, C-779, C-780, C-781, C-782, C-783, C-784, C-785, C-786, C-787, C-788, C-789, C-790, C-791, C-792, C-793, C-794, C-795, C-796, C-797, C-798, C-799, C-800, C-801, C-802, C-803, C-804, C-805, C-806, C-807, C-808, C-809, C-810, C-811, C-812, C-813, C-814, C-815, C-816, C-817, C-818, C-819, C-820, C-821, C-822, C-823, C-824, C-825, C-826, C-827, C-828, C-829, C-830, C-831, C-832, C-833, C-834, C-835, C-836, C-837, C-838, C-839, C-840, C-841, C-842, C-843, C-844, C-845, C-846, C-847, C-848, C-849, C-850, C-851, C-852, C-853, C-854, C-855, C-856, C-857, C-858, C-859, C-860, C-861, C-862, C-863, C-864, C-865, C-866, C-867, C-868, C-869, C-870, C-871, C-872, C-873, C-874, C-875, C-876, C-877, C-878, C-879, C-880, C-881, C-882, C-883, C-884, C-885, C-886, C-887, C-888, C-889, C-890, C-891, C-892, C-893, C-894, C-895, C-896, C-897, C-898, C-899, C-900, C-901, C-902, C-903, C-904, C-905, C-906, C-907, C-908, C-909, C-910, C-911, C-912, C-913, C-914, C-915, C-916, C-917, C-918, C-919, C-920, C-921, C-922, C-923, C-924, C-925, C-926, C-927, C-928, C-929, C-930, C-931, C-932, C-933, C-934, C-935, C-936, C-937, C-938, C-939, C-940, C-941, C-942, C-943, C-944, C-945, C-946, C-947, C-948, C-949, C-950, C-951, C-952, C-953, C-954, C-955, C-956, C-957, C-958, C-959, C-960, C-961, C-962, C-963, C-964, C-965, C-966, C-967, C-968, C-969, C-970, C-971, C-972, C-973, C-974, C-975, C-976, C-977, C-978, C-979, C-980, C-981, C-982, C-983, C-984, C-985, C-986, C-987, C-988, C-989, C-990, C-991, C-992, C-993, C-994, C-995, C-996, C-997, C-998, C-999, C-1000, C-1001, C-1002, C-1003, C-1004, C-1005, C-1006, C-1007, C-1008, C-1009, C-1010, C-1011, C-1012, C-1013, C-1014, C-1015, C-1016, C-1017, C-1018, C-1019, C-1020, C-1021, C-1022, C-1023, C-1024, C-1025, C-1026, C-1027, C-1028, C-1029, C-1030, C-1031, C-1032, C-1033, C-1034, C-1035, C-1036, C-1037, C-1038, C-1039, C-1040, C-1041, C-1042, C-1043, C-1044, C-1045, C-1046, C-1047, C-1048, C-1049, C-1050, C-1051, C-1052, C-1053, C-1054, C-1055, C-1056, C-1057, C-1058, C-1059, C-1060, C-1061, C-1062, C-1063, C-1064, C-1065, C-1066, C-1067, C-1068, C-1069, C-1070, C-1071, C-1072, C-1073, C-1074, C-1075, C-1076, C-1077, C-1078, C-1079, C-1080, C-1081, C-1082, C-1083, C-1084, C-1085, C-1086, C-1087, C-1088, C-1089, C-1090, C-1091, C-1092, C-1093, C-1094, C-1095, C-1096, C-1097, C-1098, C-1099, C-1100, C-1101, C-1102, C-1103, C-1104, C-1105, C-1106, C-1107, C-1108, C-1109, C-1110, C-1111, C-1112, C-1113, C-1114, C-1115, C-1116, C-1117, C-1118, C-1119, C-1120, C-1121, C-1122, C-1123, C-1124, C-1125, C-1126, C-1127, C-1128, C-1129, C-1130, C-1131, C-1132, C-1133, C-1134, C-1135, C-1136, C-1137, C-1138, C-1139, C-1140, C-1141, C-1142, C-1143, C-1144, C-1145, C-1146, C-1147, C-1148, C-1149, C-1150, C-1151, C-1152, C-1153, C-1154, C-1155, C-1156, C-1157, C-1158, C-1159, C-1160, C-1161, C-1162, C-1163, C-1164, C-1165, C-1166, C-1167, C-1168, C-1169, C-1170, C-1171, C-1172, C-1173, C-1174, C-1175, C-1176, C-1177, C-1178, C-1179, C-1180, C-1181, C-1182, C-1183, C-1184, C-1185, C-1186, C-1187, C-1188, C-1189, C-1190, C-1191, C-1192, C-1193, C-1194, C-1195, C-1196, C-1197, C-1198, C-1199, C-1200, C-1201, C-1202, C-1203, C-1204, C-1205, C-1206, C-1207, C-1208, C-1209, C-1210, C-1211, C-1212, C-1213, C-1214, C-1215, C-1216, C-1217, C-1218, C-1219, C-1220, C-1221, C-1222, C-1223, C-1224, C-1225, C-1226, C-1227, C-1228, C-1229, C-1230, C-1231, C-1232, C-1233, C-1234, C-1235, C-1236, C-1237, C-1238, C-1239, C-1240, C-1241, C-1242, C-1243, C-1244, C-1245, C-1246, C-1247, C-1248, C-1249, C-1250, C-1251, C-1252, C-1253, C-1254, C-1255, C-1256, C-1257, C-1258, C-1259, C-1260, C-1261, C-1262, C-1263, C-1264, C-1265, C-1266, C-1267, C-1268, C-1269, C-1270, C-1271, C-1272, C-1273, C-1274, C-1275, C-1276, C-1277, C-1278, C-1279, C-1280, C-1281, C-1282, C-1283, C-1284, C-1285, C-1286, C-1287, C-1288, C-1289, C-1290, C-1291, C-1292, C-1293, C-1294, C-1295, C-1296, C-1297, C-1298, C-1299, C-1300, C-1301, C-1302, C-1303, C-1304, C-1305, C-1306, C-1307, C-1308, C-1309, C-1310, C-1311, C-1312, C-1313, C-1314, C-1315, C-1316, C-1317, C-1318, C-1319, C-1320, C-1321, C-1322, C-1323, C-1324, C-1325, C-1326, C-1327, C-1328, C-1329, C-1330, C-1331, C-1332, C-1333, C-1334, C-1335, C-1336, C-1337, C-1338, C-1339, C-1340, C-1341, C-1342, C-1343, C-1344, C-1345, C-1346, C-1347, C-1348, C-1349, C-1350, C-1351, C-1352, C-1353, C-1354, C-1355, C-1356, C-1357, C-1358, C-1359, C-1360, C-1361, C-1362, C-1363, C-1364, C-1365, C-1366, C-1367, C-1368, C-1369, C-1370, C-1371, C-1372, C-1373, C-1374, C-1375, C-1376, C-1377, C-1378, C-1379, C-1380, C-1381, C-1382, C-1383, C-1384, C-1385, C-1386, C-1387, C-1388, C-1389, C-1390, C-1391, C-1392, C-1393, C-1394, C-1395, C-1396, C-1397, C-1398, C-1399, C-1400, C-1401, C-1402, C-1403, C-1404, C-1405, C-1406, C-1407, C-1408, C-1409, C-1410, C-1411, C-1412, C-1413, C-1414, C-1415, C-1416, C-1417, C-1418, C-1419, C-1420, C-1421, C-1422, C-1423, C-1424, C-1425, C-1426, C-1427, C-1428, C-1429, C-1430, C-1431, C-1432, C-1433, C-1434, C-1435, C-1436, C-1437, C-1438, C-1439, C-1440, C-1441, C-1442, C-1443, C-1444, C-1445, C-1446, C-1447, C-1448, C-1449, C-1450, C-1451, C-1452, C-1453, C-1454, C-1455, C-1456, C-1457, C-1458, C-1459, C-1460, C-1461, C-1462, C-1463, C-1464, C-1465, C-1466, C-1467, C-1468, C-1469, C-1470, C-1471, C-1472, C-1473, C-1474, C-1475, C-1476, C-1477, C-1478, C-1479, C-1480, C-1481, C-1482, C-1483, C-1484, C-1485, C-1486, C-1487, C-1488, C-1489, C-1490, C-1491, C-1492, C-1493, C-1494, C-1495, C-1496, C-1497, C-1498, C-1499, C-1500, C-1501, C-1502, C-1503, C-1504, C-1505, C-1506, C-1507, C-1508, C-1509, C-1510, C-1511, C-1512, C-1513, C-1514, C-1515, C-1516, C-1517, C-1518, C-1519, C-1520, C-1521, C-1522, C-1523, C-1524, C-1525, C-1526, C-1527, C-1528, C-1529, C-1530, C-1531, C-1532, C-1533, C-1534, C-1535, C-1536, C-1537, C-1538, C-1539, C-1540, C-1541, C-1542, C-1543, C-1544, C-1545, C-1546, C-1547, C-1548, C-1549, C-1550, C-1551, C-1552, C-1553, C-1554, C-1555, C-1556, C-1557, C-1558, C-1559, C-1560, C-1561, C-1562, C-1563, C-1564, C-1565, C-1566, C-1567, C-1568, C-1569, C-1570, C-1571, C-1572, C-1573, C-1574, C-1575, C-1576, C-1577, C-1578, C-1579, C-1580, C-1581, C-1582, C-1583, C-1584, C-1585, C-1586, C-1587, C-1588, C-1589, C-1590, C-1591, C-1592, C-1593, C-1594, C-1595, C-1596, C-1597, C-1598, C-1599, C-1600, C-1601, C-1602, C-1603, C-1604, C-1605, C-1606, C-1607, C-1608, C-1609, C-1610, C-1611, C-1612, C-1613, C-1614, C-1615, C-1616, C-1617, C-1618, C-1619, C-1620, C-1621, C-1622, C-1623, C-1624, C-1625, C-1626, C-1627, C-1628, C-1629, C-1630, C-1631, C-1632, C-1633, C-1634, C-1635, C-1636, C-1637, C-1638, C-1639, C-1640, C-1641, C-1642, C-1643, C-1644, C-1645, C-1646, C-1647, C-1648, C-1649, C-1650, C-1651, C-1652, C-1653, C-1654, C-1655, C-1656, C-1657, C-1658, C-1659, C-1660, C-1661, C-1662, C-1663, C-1664, C-1665, C-1666, C-1667, C-1668, C-1669, C-1670, C-1671, C-1672, C-1673, C-1674, C-1675, C-1676, C-1677, C-1678, C-1679, C-1680, C-1681, C-1682, C-1683, C-1684, C-1685, C-1686, C-1687, C-1688, C-1689, C-1690, C-1691, C-1692, C-1693, C-1694, C-1695, C-1696, C-1697, C-1698, C-1699, C-1700, C-1701, C-1702, C-1703, C-1704, C-1705, C-1706, C-1707, C-1708, C-1709, C-1710, C-1711, C-1712, C-1713, C-1714, C-1715, C-1716, C-1717, C-1718, C-1719, C-1720, C-1721, C-1722, C-1723, C-1724, C-1725, C-1726, C-1727, C-1728, C-1729, C-1730, C-1731, C-1732, C-1733, C-1734, C-1735, C-1736, C-1737, C-1738, C-1739, C-1740, C-1741, C-1742, C-1743, C-1744, C-1745, C-1746, C-1747, C-1748, C-1749, C-1750, C-1751, C-1752, C-1753, C-1754, C-1755, C-1756, C-1757, C-1758, C-1759, C-1760, C-1761, C-1762, C-1763, C-1764, C-1765, C-1766, C-1767, C-1768, C-1769, C-1770, C-1771, C-1772, C-1773, C-1774, C-1775, C-1776, C-1777, C-1778, C-1779, C-1780, C-1781, C-1782, C-1783, C-1784, C-1785, C-1786, C-1787, C-1788, C-1789, C-1790, C-1791, C-1792, C-1793, C-1794, C-1795, C-1796, C-1797, C-1798, C-1799, C-1800, C-1801, C-1802, C-1803, C-1804, C-1805, C-1806, C-1807, C-1808, C-1809, C-1810, C-1811, C-1812, C-1813, C-1814



