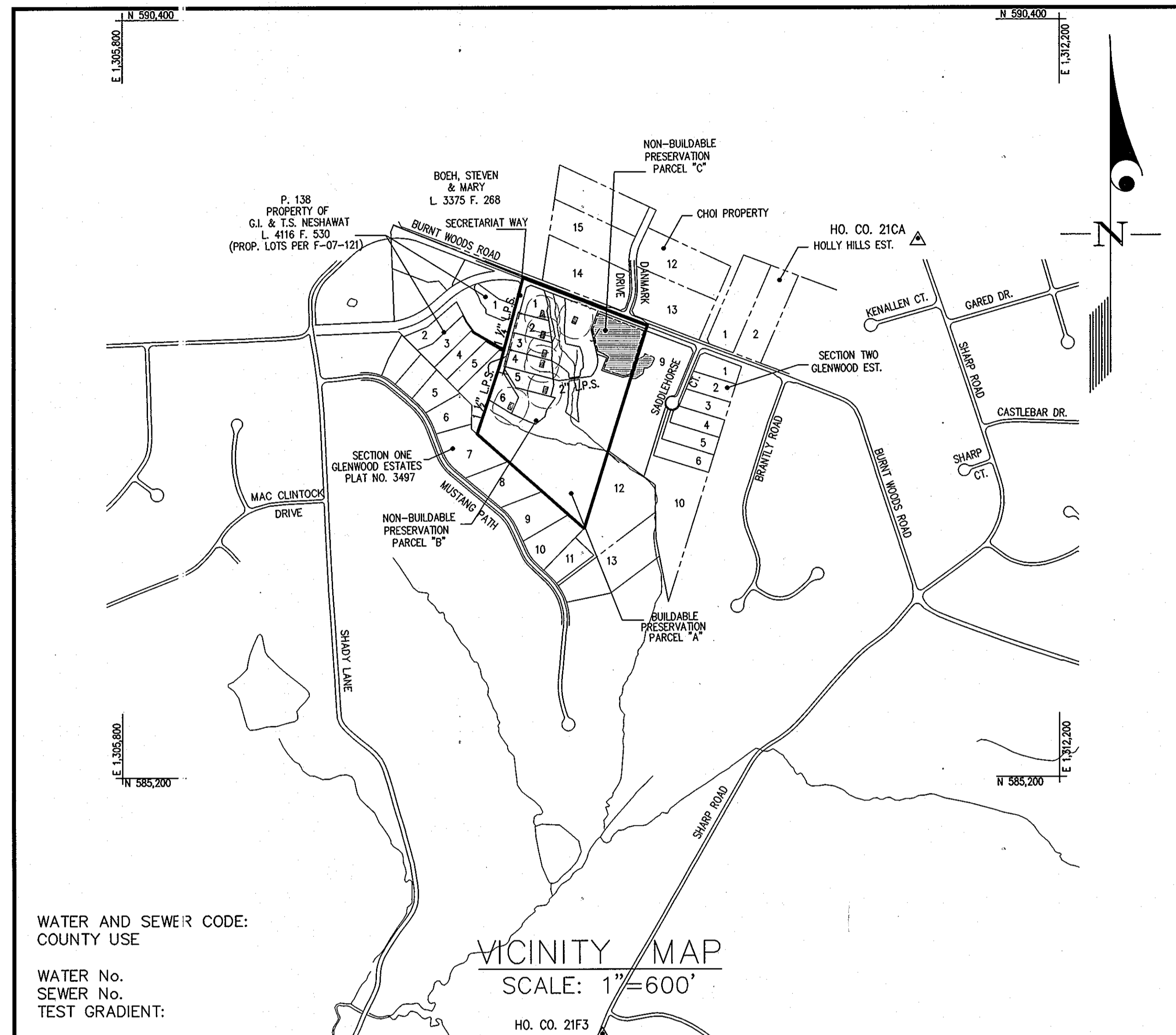
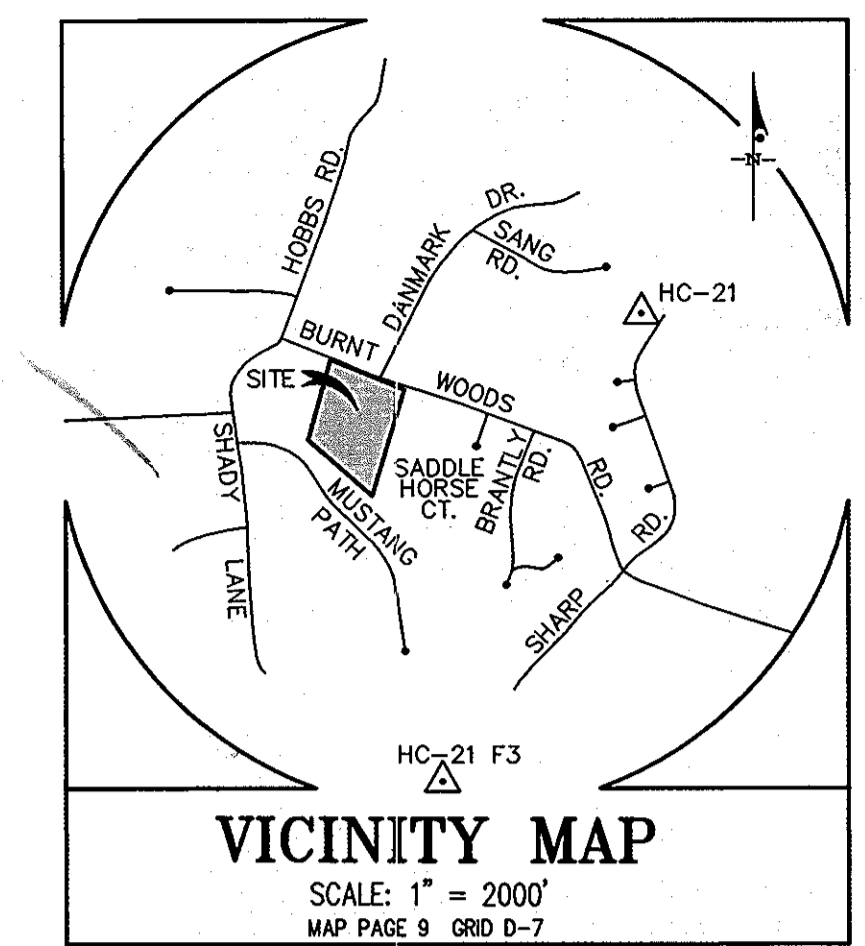


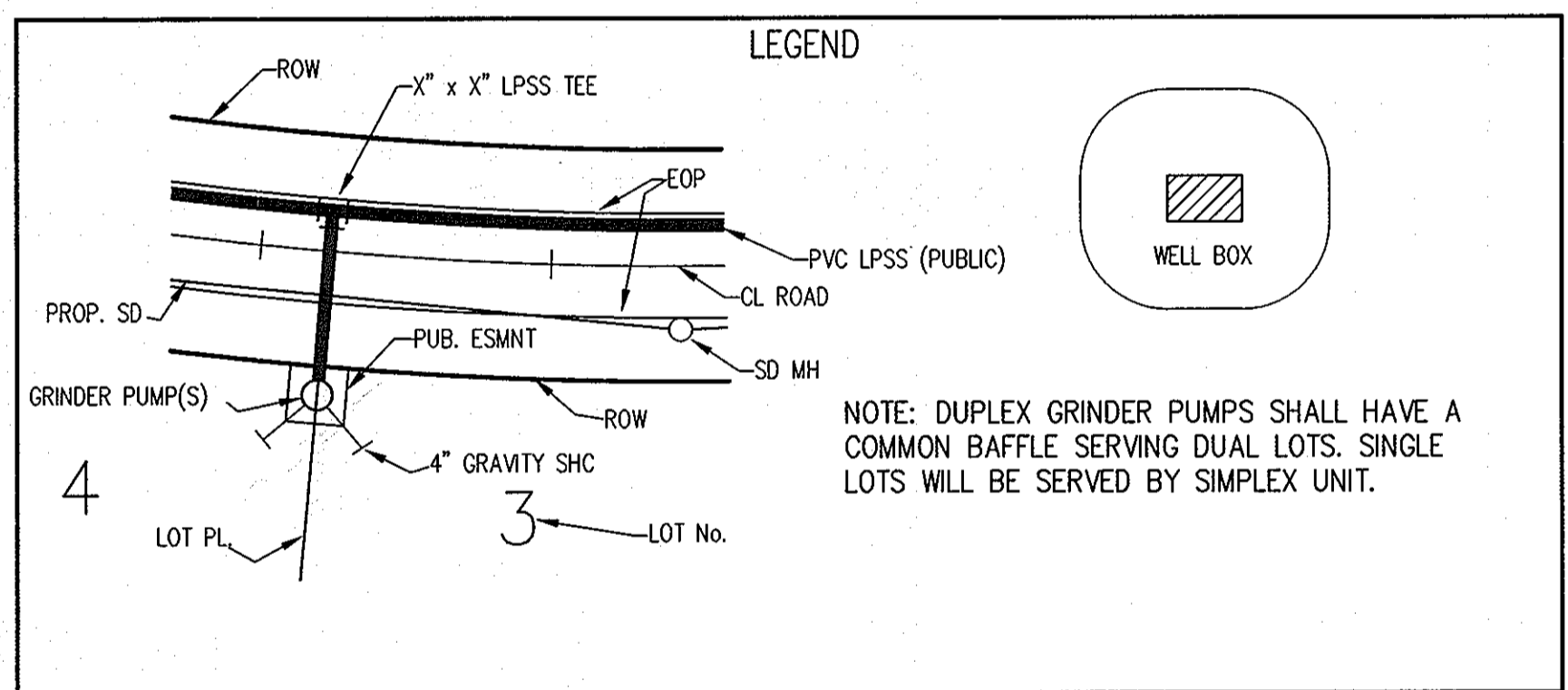
QUANTITIES				
ITEMS	QUANTITIES ESTIMATED	AS-BUILT		
		QUANTITIES	TYPE	MANUFACTURER/SUPPLIER
1 1/2" L.P.S.	403 LF.	410	HDPE	ISCO INDUSTRIES
1 1/2" L.P.S.	160 LF.	165	HDPE	"
2" L.P.S.	848 LF.	855	HDPE	"
IN-LINE FLUSHING CONN.	2 EA.	2 EA	HDPE	ISCO INDUSTRIES
TERMINAL FLUSHING CONN.	2 EA.	2 EA	HDPE	"
GRINDER PUMPS	4 EA.	4 EA		FLUID SOLUTIONS
2" x 1/2" H.B.	1 EA.	1 EA	HDPE	ISCO INDUSTRIES
2" x 1/2" H.B.	1 EA.	1 EA		"
NAME OF UTILITY CONTRACTOR:				
SURVEY AND DRAFTING DIV.		CHECKBOX: AS-BUILT DATE:		



GENERAL NOTES

- PART I**
- APPROXIMATE LOCATIONS OF EXISTING MAINS ARE SHOWN. THE CONTRACTOR SHALL TAKE ALL NECESSARY PRECAUTIONS TO PROTECT EXISTING MAINS AND SERVICES AND MAINTAIN UNINTERRUPTED SERVICE. ANY DAMAGE INCURRED SHALL BE REPAIRED IMMEDIATELY TO THE SATISFACTION OF THE ENGINEER AT THE CONTRACTOR'S EXPENSE.
 - TOPOGRAPHIC FIELD SURVEYS WERE PERFORMED IN JULY, 2003 BY MCKENZIE-SYNDER, INC.
 - HORIZONTAL AND VERTICAL SURVEY CONTROLS:
 - THE COORDINATES SHOWN ON THE DRAWINGS ARE BASED ON MARYLAND STATE REFERENCE SYSTEM NAD '83' AS PROJECTED BY HOWARD COUNTY GEODETIC CONTROL STATIONS NO. 21CA AND NO. 21F3.
 - 21F3: NORTHING: 583441.184 ft. EASTING: 1309075.607 ft. ELEVATION: 539.090 ft.
 - 21CA NORTHING: 588897.363 ft. EASTING: 131235.687 ft. ELEVATION: 613.399 ft.
 - ALL VERTICAL CONTROLS ARE BASED ON NAVD'29.
 - ALL PIPE ELEVATIONS SHOWN ARE INVERT ELEVATIONS UNLESS OTHERWISE NOTED ON THE PLANS.
 - CLEAR ALL UTILITIES BY A MINIMUM OF 12 INCHES. CLEAR ALL POLES BY 5'-0" MINIMUM OR TUNNEL AS REQUIRED UNLESS OTHERWISE NOTED. THE OWNER HAS CONTACTED THE UTILITY COMPANIES AND HAS MADE ARRANGEMENTS FOR BRACING OF POLES AS SHOWN ON THE DRAWINGS. IN THE EVENT THE CONTRACTOR'S WORK REQUIRES BRACING OF ADDITIONAL POLES, ANY COST INCURRED BY THE OWNER FOR THE BRACING OF ADDITIONAL POLES OR DAMAGES SHALL BE DEDUCTED FROM MONIES OWED THE CONTRACTOR. THE CONTRACTOR SHALL COORDINATE WITH THE UTILITY COMPANIES TO SCHEDULE THE BRACING OF THE POLES.
 - FOR DETAILS NOT SHOWN ON THE DRAWING, AND FOR MATERIALS AND CONSTRUCTION METHODS, USE HOWARD COUNTY DESIGN MANUAL, VOLUME IV, STANDARD SPECIFICATIONS AND DETAILS FOR CONSTRUCTION (LATEST EDITION). THE CONTRACTOR SHALL HAVE A COPY OF VOLUME IV ON THE JOB.
 - WHERE TEST PITS HAVE BEEN MADE ON EXISTING UTILITIES, THEY ARE NOTED BY THE SYMBOL AT THE LOCATIONS OF THE TEST PITS. A NOTE OR NOTES CONTAINING THE RESULTS OF THE TEST PIT OR PITS IS INCLUDED ON THE DRAWINGS. EXISTING UTILITIES IN THE VICINITY OF THE PROPOSED WORK FOR WHICH TEST PITS HAVE NOT BEEN DUG SHALL BE LOCATED BY THE CONTRACTOR TWO WEEKS IN ADVANCE OF CONSTRUCTION OPERATIONS AT HIS OWN EXPENSE.
 - THE CONTRACTOR SHALL NOTIFY THE FOLLOWING UTILITY COMPANIES OR AGENCIES AT LEAST FIVE WORKING DAYS BEFORE STARTING WORK ON THESE PLANS:

AT&T	1-800-252-1133
BGE (CONTRACTOR SERVICES)	410-850-4620
BGE (UNDER GROUND DAMAGE CONTROL)	410-685-1400
BUREAU OF UTILITIES	410-313-4900
COLONIAL PIPELINE CO.	410-795-1390
MISS UTILITY	1-800-257-7777
STATE HIGHWAY ADMINISTRATION	410-531-5533
VERIZON	1-800-743-0033 / 410-224-9210
 - TREES AND SHRUBS ARE TO BE PROTECTED FROM DAMAGE TO THE MAXIMUM EXTENT. TREES AND SHRUBS LOCATED WITHIN THE CONSTRUCTION AREA STRIP ARE NOT TO BE REMOVED OR DAMAGED BY THE CONTRACTOR.
 - THE CONTRACTOR SHALL REMOVE TREES, STUMPS AND ROOTS ALONG THE LINE OF EXCAVATION. PAYMENT FOR SUCH REMOVAL SHALL BE INCLUDED IN THE UNIT PRICE BID FOR CONSTRUCTION OF THE MAIN.
 - THE CONTRACTOR SHALL NOTIFY THE BUREAU OF HIGHWAYS, HOWARD COUNTY, AT (410)-313-7450 AT LEAST FIVE WORKING DAYS BEFORE OPEN CUTTING OR BORING/JACKING OF ANY COUNTY ROAD FOR LAYING WATER/SEWER MAINS OR HOUSE CONNECTIONS. THE APPROVAL OF THESE DRAWINGS WILL CONSTITUTE COMPLIANCE WITH DPW REQUIREMENTS PER SECTION 18.114(a) OF THE HOWARD COUNTY CODE.



SHEET INDEX

- COVER SHEET
- SEPTIC COLLECTION SYSTEM PLAN
- SEPTIC COLLECTION SYSTEM PROFILES
- SEPTIC COLLECTION SYSTEM DETAILS

TYPE OF BUILDING	RESIDENTIAL
NUMBER OF UNITS	7
NUMBER OF S.H.C.'s	7
NUMBER OF W.H.C.'s	N/A (THERE WILL BE A WELL ON EACH INDIVIDUAL LOT)
DRAINAGE AREA	N/A
TREATMENT PLANT	COMMUNITY SEPTIC FIELD ON PRESERVATION PARCEL "C"

CONTRACT No. 50-4458-D
SEPTIC COLLECTION SYSTEM
MAPLEWOOD FARMS
LOTS 1-6, BUILDABLE PRESERVATION PARCEL "A"
AND NON-BUILDABLE PRESERVATION PARCELS "B" & "C"
HOWARD COUNTY, MARYLAND
DEPARTMENT OF PUBLIC WORKS

Sediment Control Measures will be implemented in accordance with Section 219 of the Specifications & with Road Drawings Plan F-07-074; Drawings for Sediment & Erosion Control.

REVIEWED FOR HOWARD SOIL CONSERVATION DISTRICT AND MEETS TECHNICAL REQUIREMENT.

John R. Peltzer 9/15/07
 SIGNATURE DATE
 U.S.D.A. NATURAL RESOURCES CONSERVATION SERVICE

DEVELOPER:
 RICHARD AZRAEL
 SNOWDEN COMMONS
 5850 WATERLOO ROAD, SUITE 230
 COLUMBIA, MARYLAND 21045
 TEL: 410-480-3699

APPROVED: FOR PUBLIC SEWERAGE COLLECTION SYSTEMS,
 HOWARD COUNTY HEALTH DEPARTMENT

B. Wilson for Peter Bailewson 8/24/2007
 County Health Officer Date

APPROVED: *Jim Meyer* 9/15/07
 HOWARD S.C.D. DATE

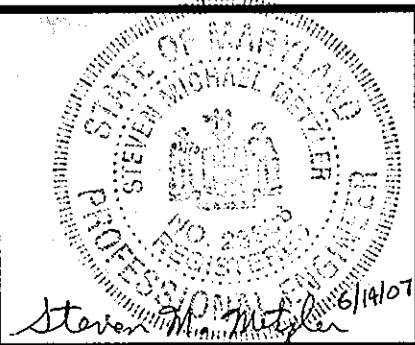
DEPARTMENT OF PUBLIC WORKS
 HOWARD COUNTY, MARYLAND

Ruth Bump 7-2-07
 CHIEF, BUREAU OF UTILITIES DATE

DEPARTMENT OF PLANNING AND ZONING
 HOWARD COUNTY, MARYLAND

[Signature] 9/15/07
 CHIEF, DEVELOPMENT ENGINEERING DIVISION DATE

GLW GUTSCHICK LITTLE & WEBER, P.A.
 CIVIL ENGINEERS, LAND SURVEYORS, LAND PLANNERS, LANDSCAPE ARCHITECTS
 5909 NATIONAL DRIVE - SUITE 250 - BURTONSVILLE 011CE PARK
 BURTONSVILLE, MARYLAND 20886
 TEL: 301-421-4024 BAL: 410-880-1820 DC/VA: 301-989-2524 FAX: 301-421-4186



DES: Wsj			
DRN: Wsj			
CHK:			
DATE: NOV 2006	KCI	1	AS BUILT REVISIONS
	BY	NO	REVISION
			DATE: 9-8-10

TITLE SHEET
 SCALE: AS SHOWN

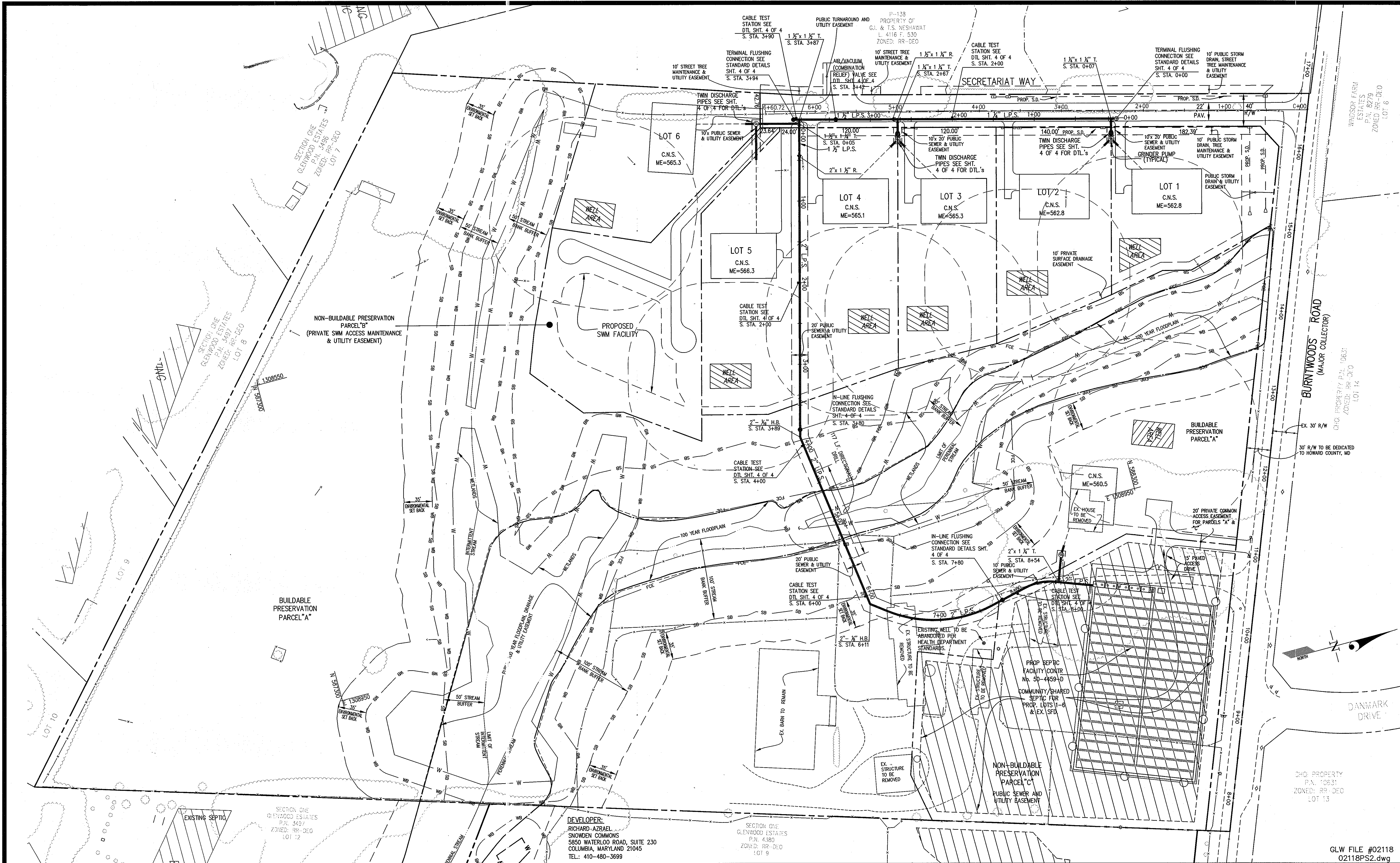
600' SCALE MAP NO. 21 BLOCK NO. 5

MAPLEWOOD FARMS
 LOTS 1-6, BUILDABLE PRESERVATION PARCEL "A"
 AND NON-BUILDABLE PRESERVATION PARCELS "B" & "C"
 HOWARD COUNTY, MARYLAND
 ELECTION DISTRICT No. 4
 CONTRACT No. 50-4458-D

GLW FILE No. 02118

SCALE AS SHOWN

SHEET 1 OF 4



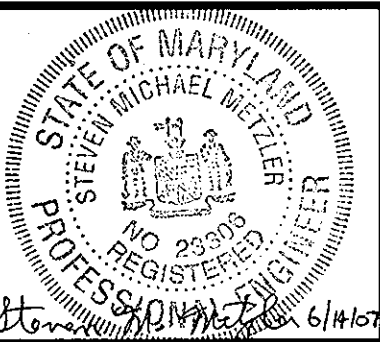
DEVELOPER:
 RICHARD-AZRAEL
 SNOWDEN COMMONS
 5550 WATERLOO ROAD, SUITE 230
 COLUMBIA, MARYLAND 21045
 TEL: 410-480-3699

GLW FILE #02118
 02118PS2.dwg

DEPARTMENT OF
 PUBLIC WORKS
 HOWARD COUNTY, MARYLAND
Ruth Benjamin 7-2-07
 CHIEF, BUREAU OF UTILITIES DATE

DEPARTMENT OF
 PLANNING AND ZONING
 HOWARD COUNTY, MARYLAND
Michael J. ... 9/17
 CHIEF, DEVELOPMENT ENGINEERING DIVISION DATE

GLW GUTSCHICK LITTLE & WEBER, P.A.
 CIVIL ENGINEERS, LAND SURVEYORS, LAND PLANNERS, LANDSCAPE ARCHITECTS
 3909 NATIONAL DRIVE - SUITE 250 - BURTSMVILLE OFFICE PARK
 BURTSMVILLE, MARYLAND 20886
 TEL: 301-421-4024 BAL: 410-880-1820 DC/VA: 301-989-2214 FAX: 301-421-4186

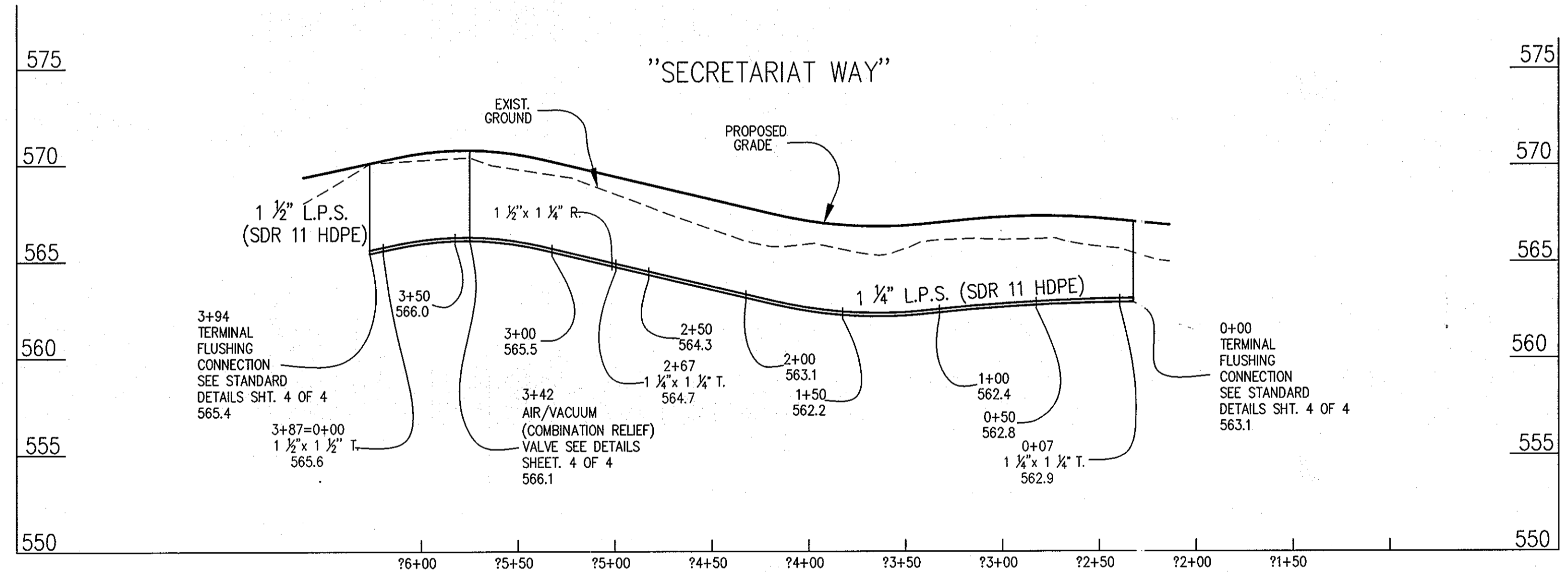
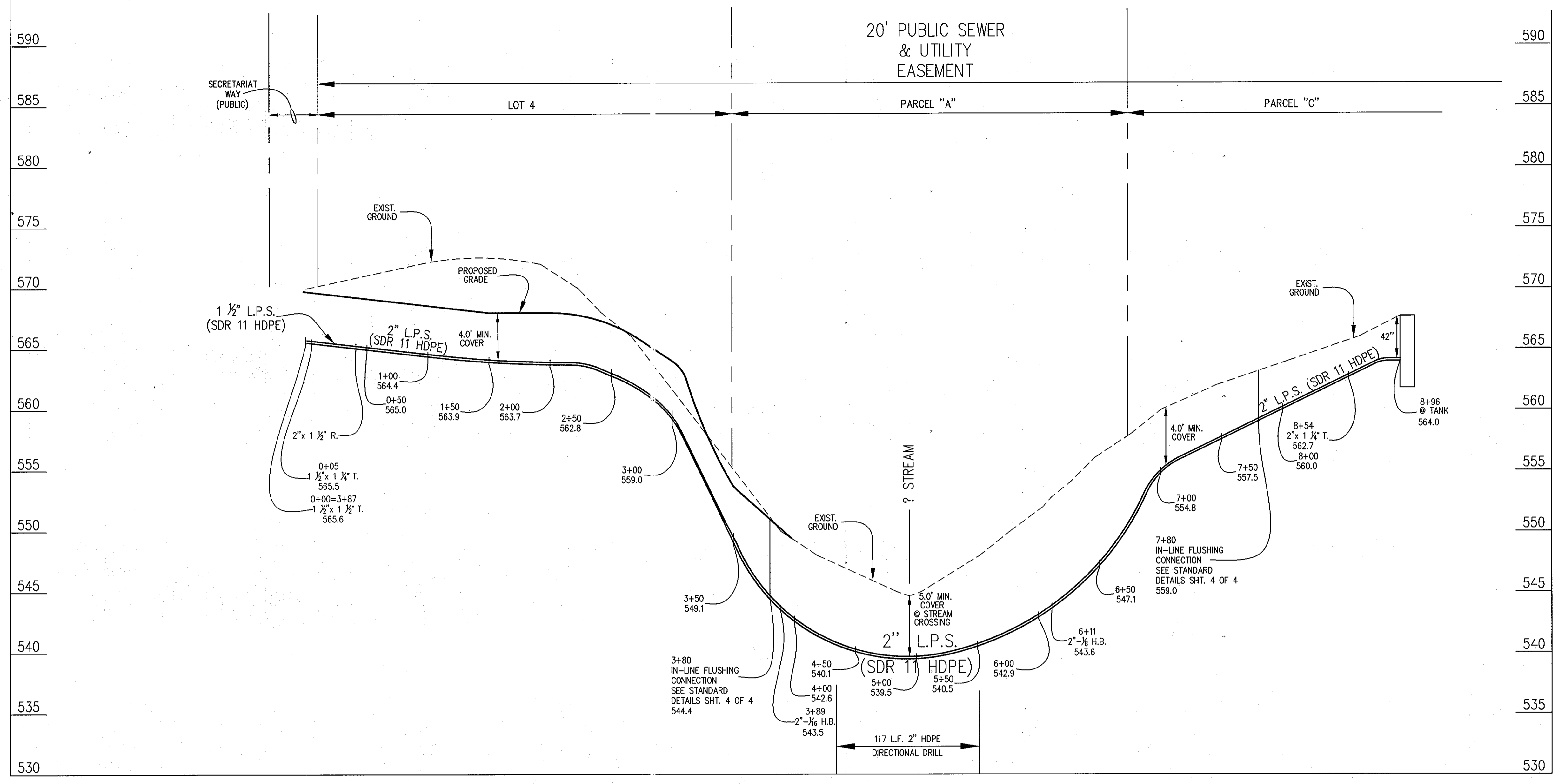


DES:	Wsj				
DRN:	Wsj				
CHK:					
DATE:	NOV, 2006	BY:	NO	REVISION:	

SEPTIC COLLECTION SYSTEM PLAN
 SCALE: 1"=50'
 600' SCALE MAP NO. 21 BLOCK NO. 5

MAPLEWOOD FARMS
 LOTS 1-6, BUILDABLE PRESERVATION PARCEL "A"
 AND NON-BUILDABLE PRESERVATION PARCELS "B" & "C"
 HOWARD COUNTY, MARYLAND
 ELECTION DISTRICT No. 4
 CONTRACT NO. 50-4458-D

SCALE AS SHOWN
 SHEET 2 OF 4



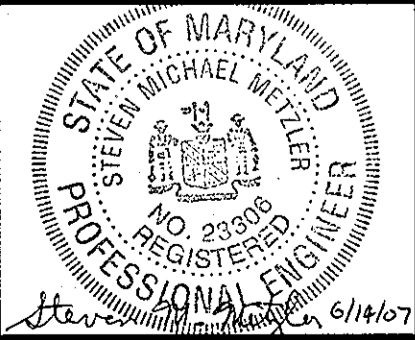
DEVELOPER:
 RICHARD AZRAEL
 SNOWDEN COMMONS
 5850 WATERLOO ROAD, SUITE 230
 COLUMBIA, MARYLAND 21045
 TEL.: 410-480-3699

GLW FILE #02118
 02118PS3.dwg

DEPARTMENT OF
 PUBLIC WORKS
 HOWARD COUNTY, MARYLAND
 Robert B. ... 7-2-09
 CHIEF, BUREAU OF UTILITIES DATE

DEPARTMENT OF
 PLANNING AND ZONING
 HOWARD COUNTY, MARYLAND
 ... 9/10
 CHIEF, DEVELOPMENT ENGINEERING DIVISION DATE

GLW GUTSCHICK LITTLE & WEBER, P.A.
 CIVIL ENGINEERS, LAND SURVEYORS, LAND PLANNERS, LANDSCAPE ARCHITECTS
 3909 NATIONAL DRIVE - SUITE 250 - BURTONSVILLE OFFICE PARK
 BURTONSVILLE, MARYLAND 20866
 TEL: 301-421-4024 BAL: 410-880-1820 DC/VA: 301-889-2114 FAX: 301-421-4186

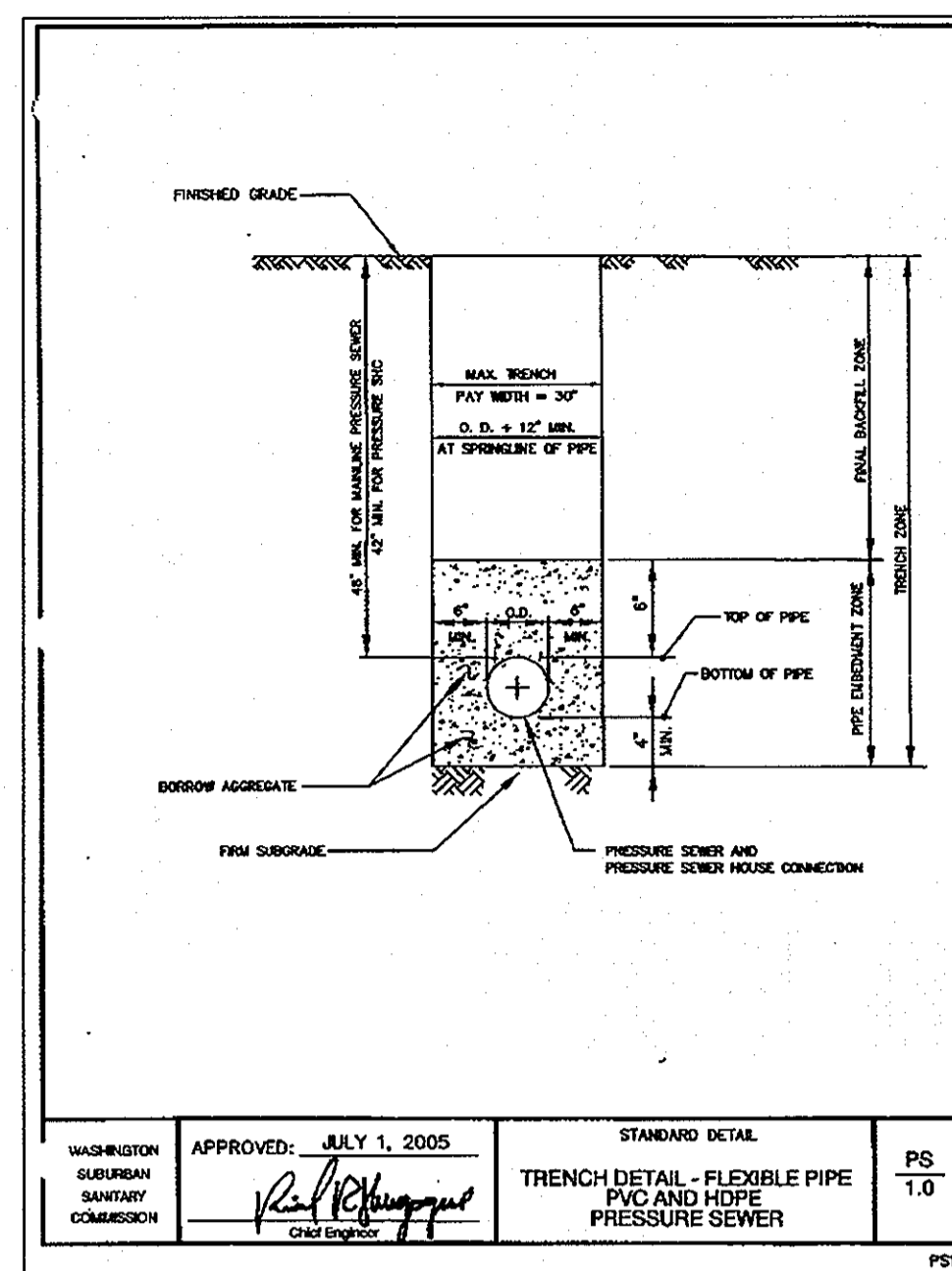


DES:	Wsj				
DRN:	Wsj				
CHK:					
NOV. DATE:	2006				
BY	NO	REVISION	DATE		

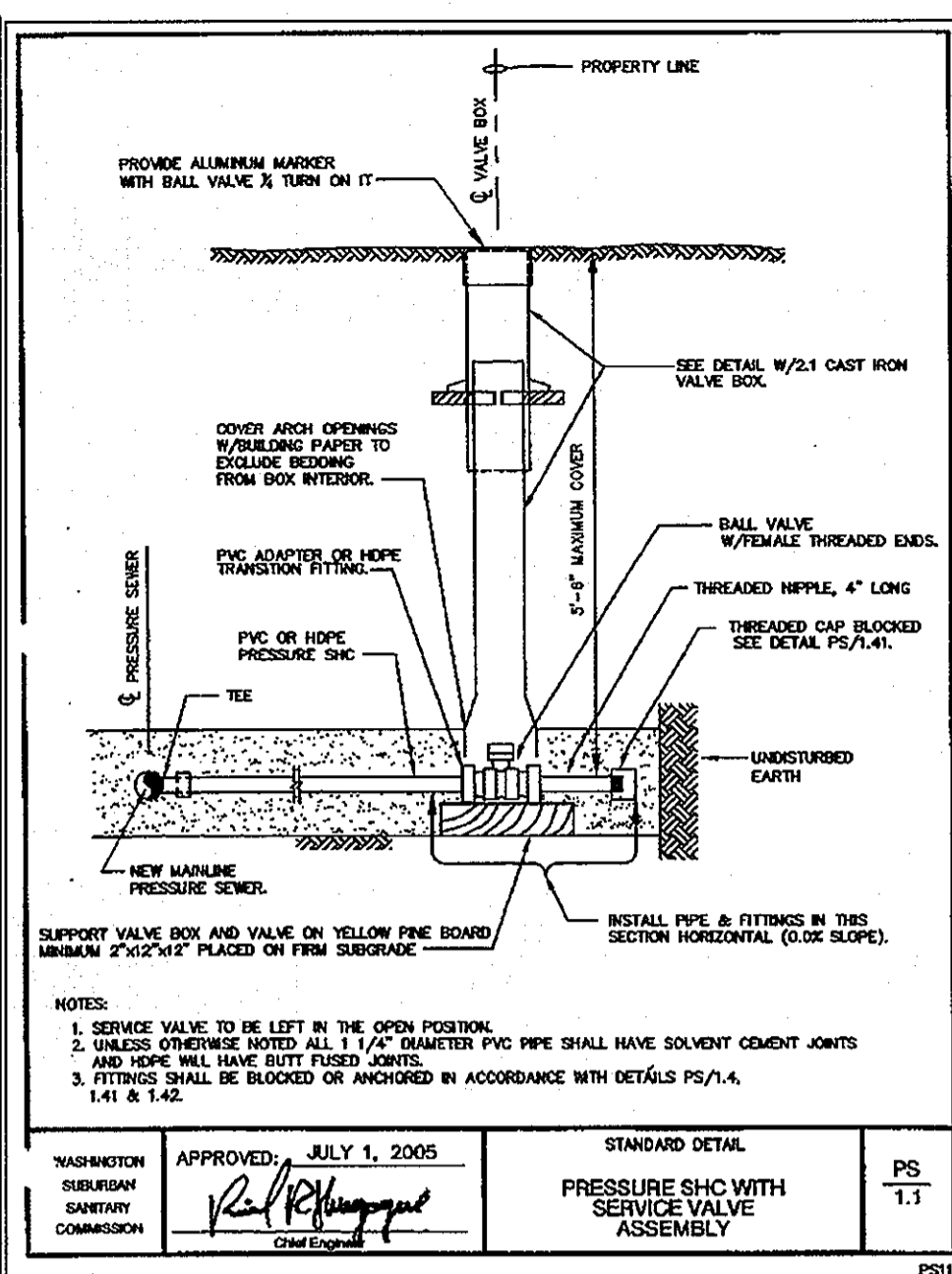
SEPTIC COLLECTION SYSTEM
 PROFILES
 SCALE: 1" = 50' (HORZ.)
 1" = 5' (VERT.)
 600' SCALE MAP NO. 21 BLOCK NO. 5

MAPLEWOOD FARMS
 LOTS 1-6, BUILDABLE PRESERVATION PARCEL "A"
 AND NON-BUILDABLE PRESERVATION PARCELS "B" & "C"
 HOWARD COUNTY, MARYLAND
 ELECTION DISTRICT No. 4
 CONTRACT No. 50-4458-D

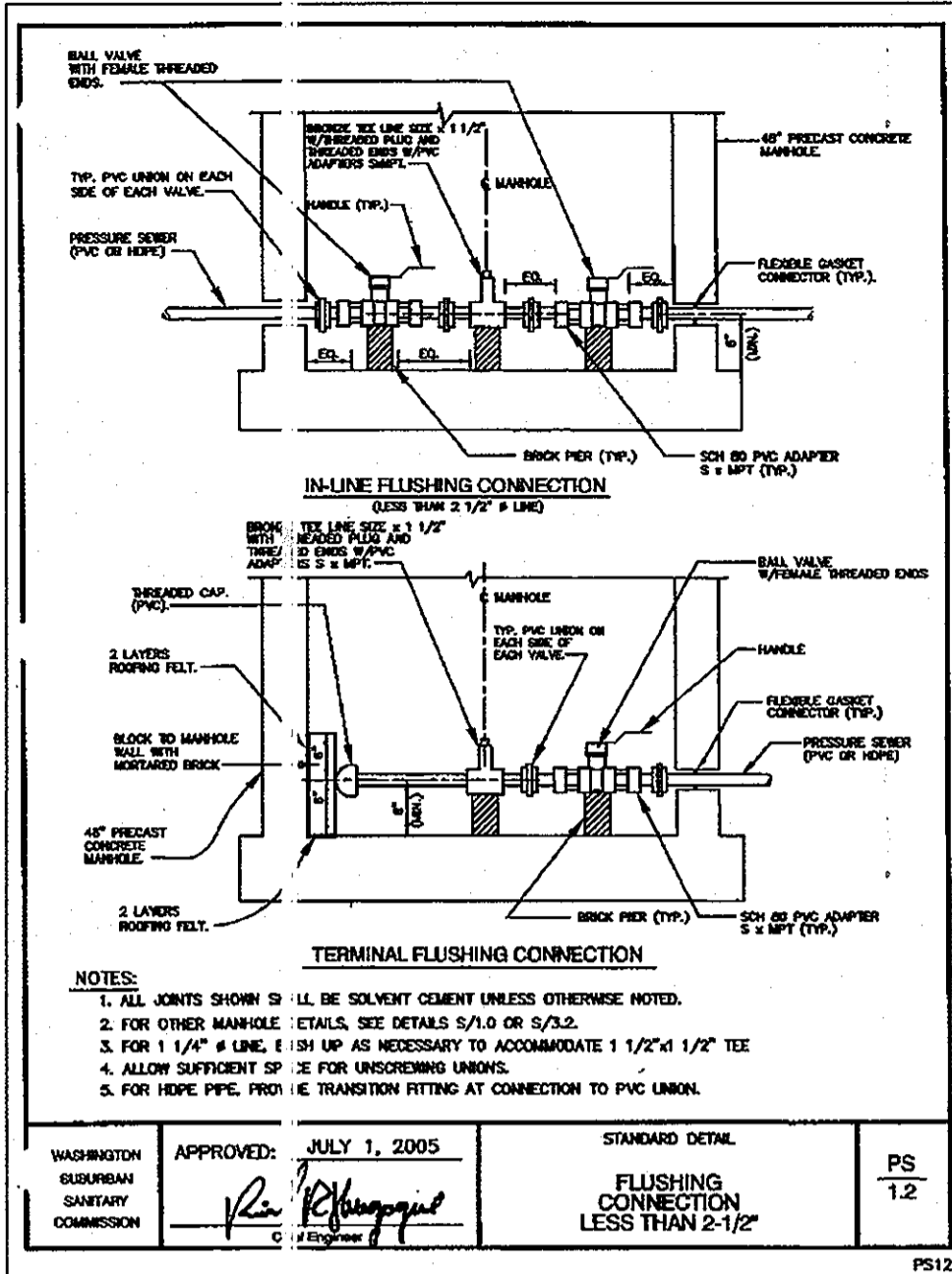
SCALE AS SHOWN
 SHEET 3 OF 4



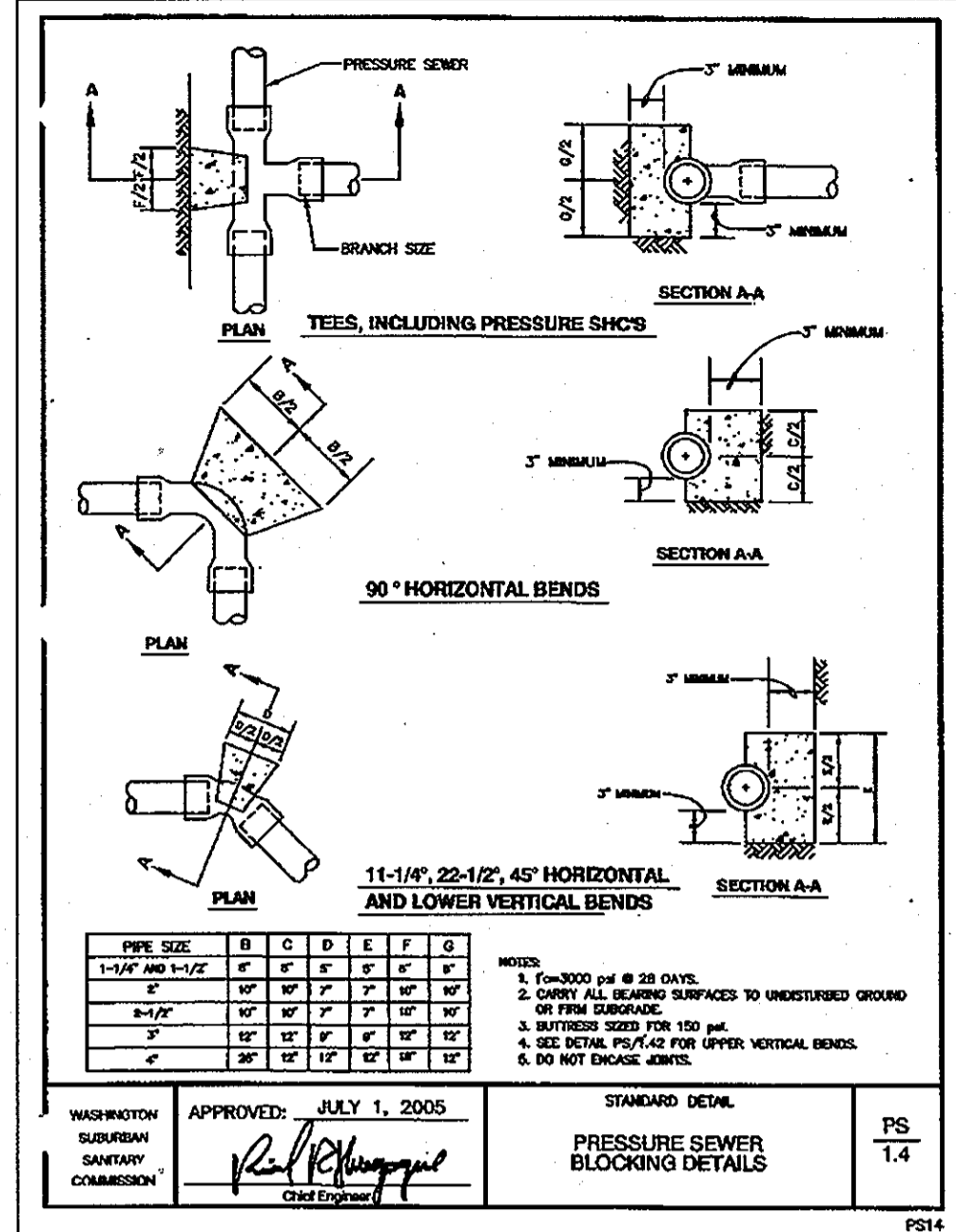
WASHINGTON SUBMITTAL STANDARD DETAIL PS 1.0
 APPROVED: JULY 1, 2005
 TRENCH DETAIL - FLEXIBLE PIPE PVC AND HDPE PRESSURE SEWER



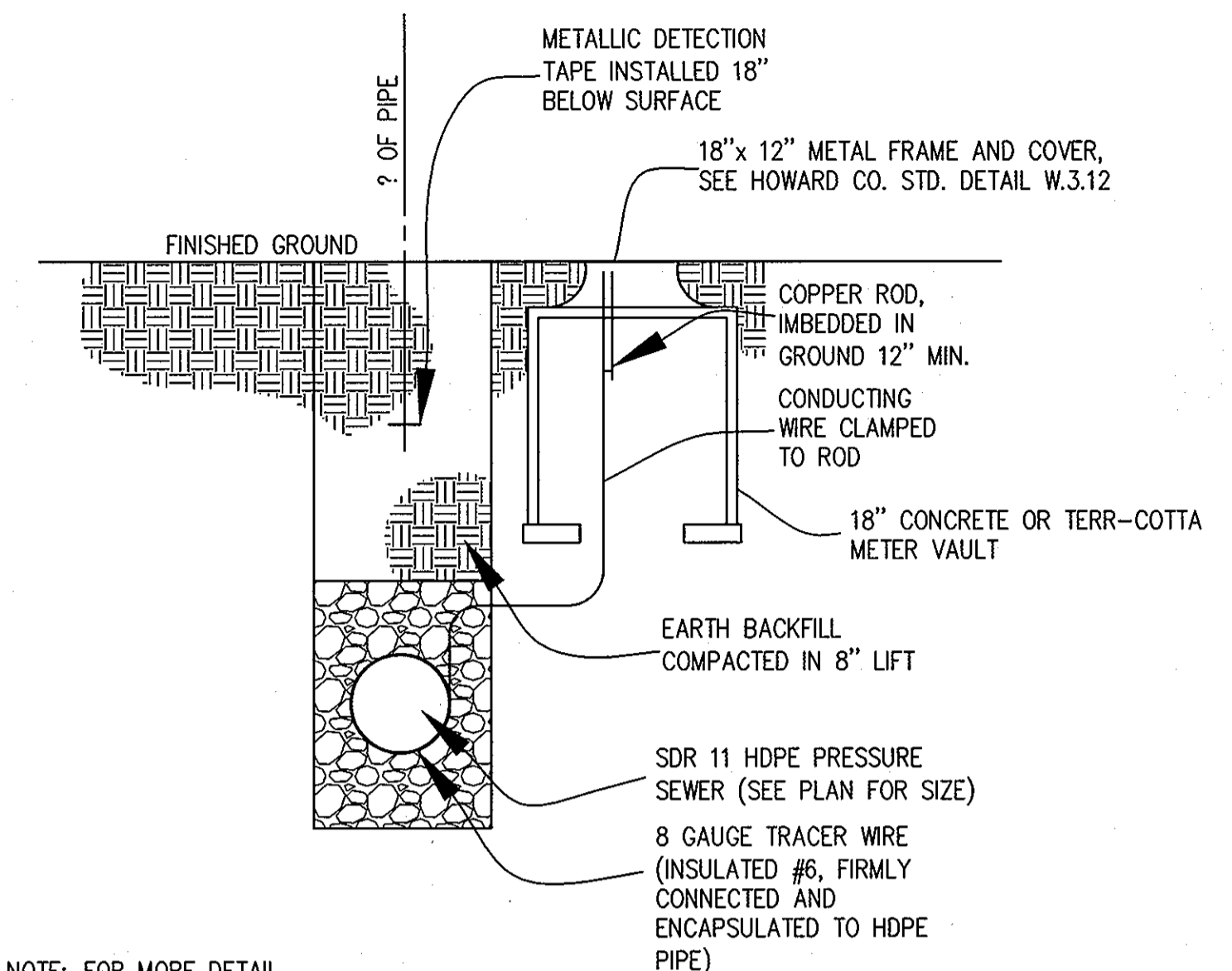
WASHINGTON SUBMITTAL STANDARD DETAIL PS 1.1
 APPROVED: JULY 1, 2005
 PRESSURE SHC WITH SERVICE VALVE ASSEMBLY



WASHINGTON SUBMITTAL STANDARD DETAIL PS 1.2
 APPROVED: JULY 1, 2005
 FLUSHING CONNECTION LESS THAN 2-1/2\"/>



WASHINGTON SUBMITTAL STANDARD DETAIL PS 1.4
 APPROVED: JULY 1, 2005
 PRESSURE SEWER BLOCKING DETAILS

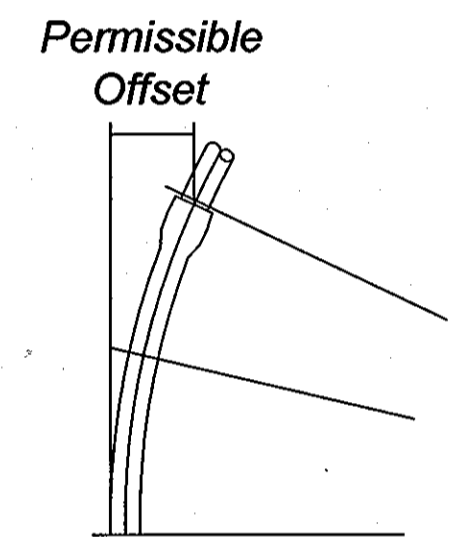


NOTE: FOR MORE DETAIL REGARDING TRENCH BEDDING SEE DETAIL P.S./1.0 THIS SHEET.

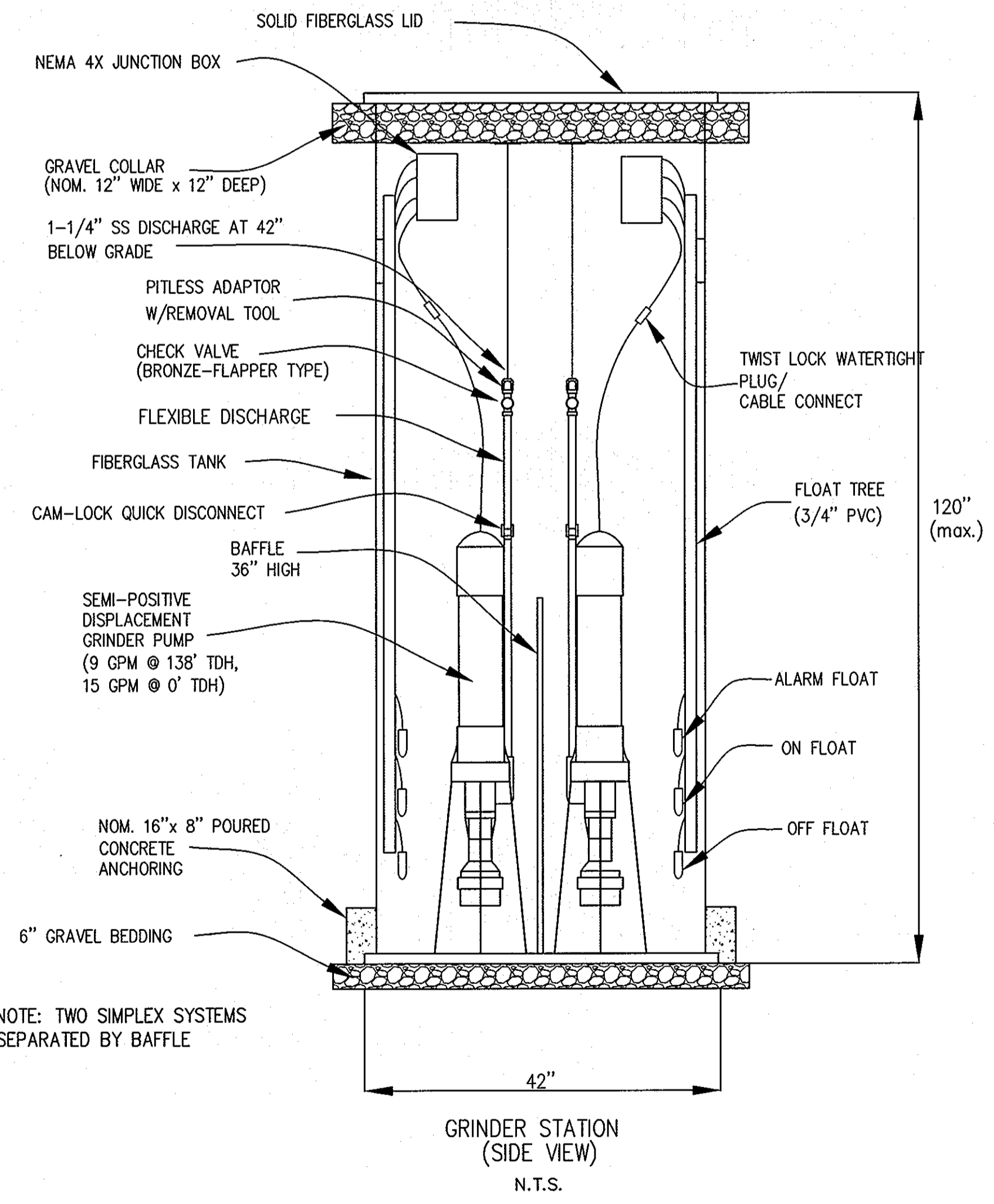
CONDUCTING ROD CABLE BOX LOCATION DETAIL (CABLE TEST STATIONS)

PIPE CURVE DATA

Diameter	Offset (in. ft.)
2"	3.33
3"	2.27
4"	1.77
6"	1.21
8"	.93
10"	.74
12"	.62

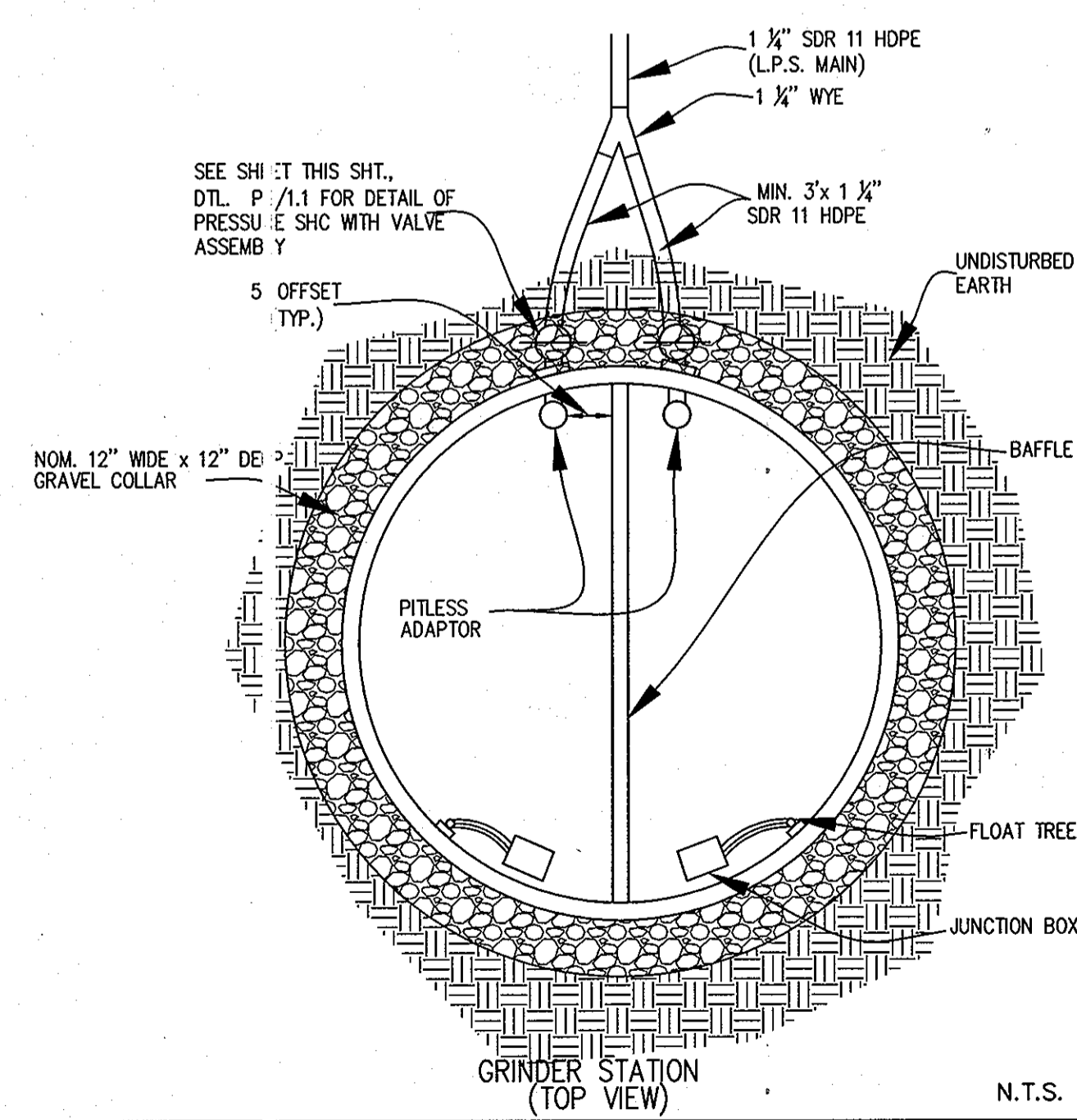


NOTE: These curvatures result only from the bending of the pipe lengths. There is virtually no deflection in the joint.

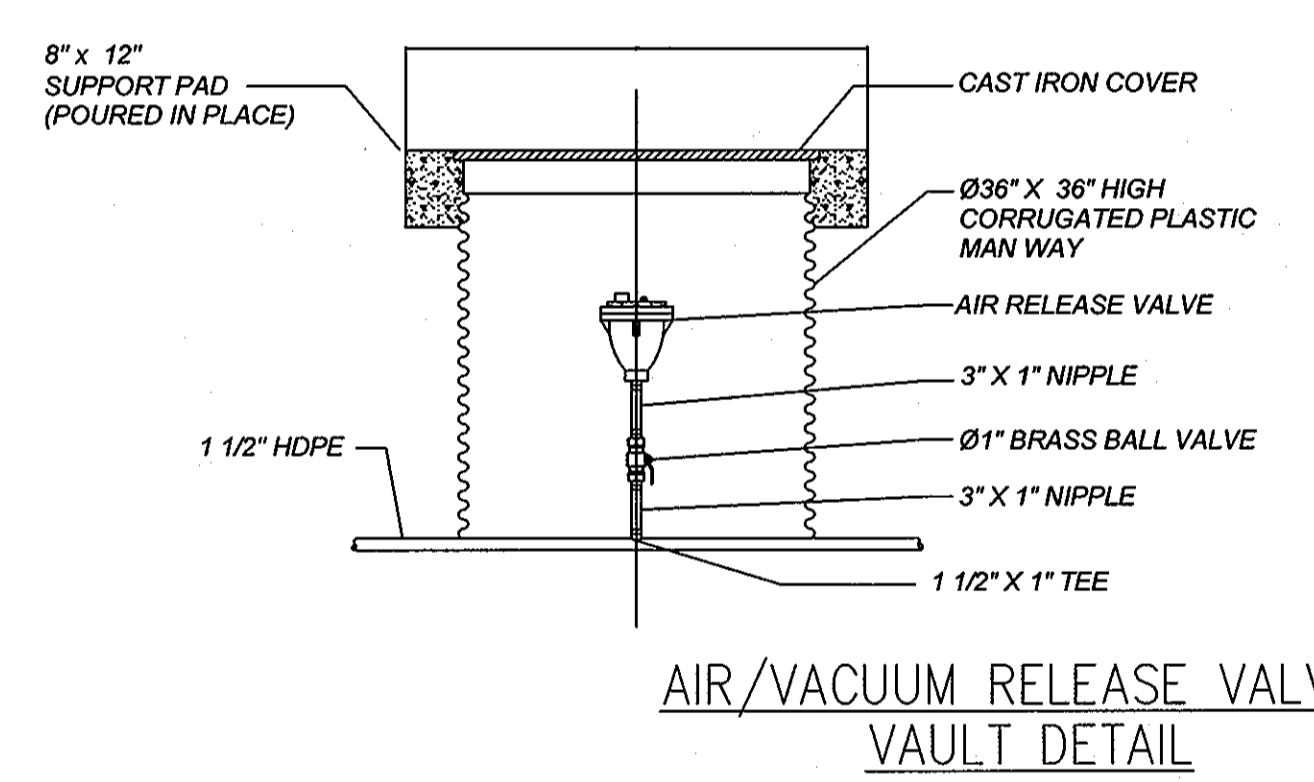


NOTE: TWO SIMPLEX SYSTEMS SEPARATED BY BAFFLE

GRINDER STATION (SIDE VIEW) N.T.S.



GRINDER STATION (TOP VIEW) N.T.S.



AIR/VACUUM RELEASE VALVE VAULT DETAIL

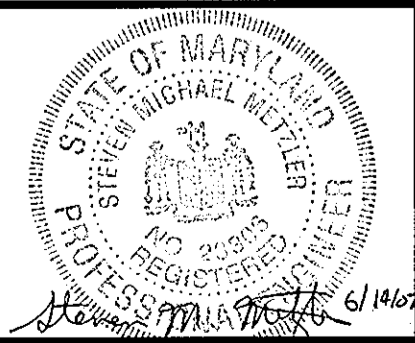
N.T.S.

GLW FILE #02118 02118PS4.dwg

DEPARTMENT OF PUBLIC WORKS
 HOWARD COUNTY, MARYLAND
 R. H. B... 7-2-07
 CHIEF, BUREAU OF UTILITIES

DEPARTMENT OF PLANNING AND ZONING
 HOWARD COUNTY, MARYLAND
 M... 9/2/07
 CHIEF, DEVELOPMENT ENGINEERING DIVISION

GLW GUTSCHICK LITTLE & WEBER, P.A.
 CIVIL ENGINEERS, LAND SURVEYORS, LAND PLANNERS, LANDSCAPE ARCHITECTS
 3909 NATIONAL DRIVE - SUITE 250 - BURTONSVILLE MARYLAND 20866
 TEL: 301-421-4024 BAL: 410-880-1820 DC/VA: 301-889-2214 FAX: 301-421-4186



DES:	
DRN:	Wsj
CHK:	
DATE:	NOV. 2006
BY:	NO
NO:	
REVISION:	
DATE:	

DETAILS FOR SEPTIC COLLECTION SYSTEM
 600' SCALE MAP NO. 21 BLOCK NO. 5

MAPLEWOOD FARMS
 LOTS 1-6, BUILDABLE PRESERVATION PARCEL "A"
 AND NON-BUILDABLE PRESERVATION PARCELS "B & C"
 HOWARD COUNTY, MARYLAND
 ELECTION DISTRICT No. 4
 CONTRACT No. 50-4458-D

SCALE AS SHOWN
 SHEET 4 OF 4