


GENERAL NOTES

- I. STANDARD GENERAL NOTES**
- APPROXIMATE LOCATIONS OF EXISTING MAINS ARE SHOWN. THE CONTRACTOR SHALL TAKE ALL NECESSARY PRECAUTIONS TO PROTECT EXISTING MAINS AND SERVICES AND MAINTAIN UNINTERRUPTED SERVICE. ANY DAMAGE INCURRED SHALL BE REPAIRED IMMEDIATELY TO THE SATISFACTION OF THE ENGINEER AT THE CONTRACTOR'S EXPENSE.
 - TOPOGRAPHIC FIELD SURVEYS WERE PERFORMED AUGUST 2006 BY SILL, ADCOCK & ASSOCIATES, LLC.
 - THE COORDINATES ON THE DRAWINGS ARE BASED ON THE MARYLAND STATE REFERENCE SYSTEM NAD '83 81' AS PROJECTED BY HOWARD COUNTY GEODETIC CONTROL STATIONS NO.35DA AND NO. 35DB.
 - ALL VERTICAL CONTROLS ARE BASED ON NAVD '88. VERTICAL CONTROLS PROVIDED ON THE DRAWINGS ARE CONCRETE MONUMENTS.
 - ALL PIPE ELEVATIONS SHOWN ARE INVERT ELEVATIONS UNLESS OTHERWISE NOTED ON THE PLANS. CLEAR ALL UTILITIES BY A MINIMUM OF 12 INCHES. CLEAR ALL POLES BY 5'-0" MINIMUM OR TUNNELS AS REQUIRED UNLESS OTHERWISE NOTED. THE OWNER HAS CONTACTED THE UTILITY COMPANIES AND HAS MADE ARRANGEMENTS FOR BRACING OF POLES AS SHOWN ON THE DRAWINGS. IN THE EVENT THE CONTRACTOR'S WORK REQUIRES THE BRACING OF ADDITIONAL POLES, ANY COST INCURRED BY THE OWNER FOR THE BRACING OF ADDITIONAL POLES OR DAMAGES SHALL BE DEDUCTED FROM MONIES OWED BY THE CONTRACTOR. THE CONTRACTOR SHALL COORDINATE WITH THE UTILITY COMPANIES TO SCHEDULE THE BRACING OF THE POLES.
 - FOR DETAILS NOT SHOWN ON THE DRAWING, AND FOR MATERIALS AND CONSTRUCTION METHODS, USE HOWARD COUNTY DESIGN MANUAL, VOLUME IV, STANDARD SPECIFICATIONS AND DETAILS FOR CONSTRUCTION (LATEST EDITION). THE CONTRACTOR SHALL HAVE A COPY OF VOLUME IV ON THE JOB.
 - WHERE TEST PITS HAVE BEEN MADE ON EXISTING UTILITIES, THEY ARE NOTED BY THE SYMBOL  AT THE LOCATIONS OF THE TEST PITS. A NOTE OR NOTES CONTAINING THE RESULTS OF THE TEST PIT OR PITS IS INCLUDED ON THE DRAWINGS. EXISTING UTILITIES IN THE VICINITY OF THE PROPOSED WORK FOR WHICH TEST PITS HAVE NOT BEEN DUG SHALL BE LOCATED BY THE CONTRACTOR TWO WEEKS IN ADVANCE OF CONSTRUCTION OPERATIONS AT HIS OWN EXPENSE.
 - THE CONTRACTOR SHALL NOTIFY THE FOLLOWING UTILITY COMPANIES OR AGENCIES AT LEAST FIVE WORKING DAYS BEFORE STARTING WORK SHOWN ON PLANS:

A & T	1-800-252-1133
BGE (CONSTRUCTION SERVICES)	410-850-4620
BGE (EMERGENCY)	410-885-1400
BUREAU OF UTILITIES	410-313-4900
COLONIAL PIPELINE COMPANY	410-765-1390
MISS UTILITY	1-800-257-7777
STATE HIGHWAY ADMINISTRATION	410-531-6533
VERIZON	1-800-743-0203/1-800-224-9210
 - TREES AND SHRUBS ARE TO BE PROTECTED FROM DAMAGE TO THE MAXIMUM EXTENT. TREES AND SHRUBS LOCATED WITHIN THE CONSTRUCTION STRIP ARE NOT TO BE REMOVED OR DAMAGED BY THE CONTRACTOR.
 - THE CONTRACTOR SHALL REMOVE TREES, STUMPS, AND ROOTS ALONG THE LINE OF EXCAVATION. PAYMENT FOR SUCH REMOVAL SHALL BE INCLUDED IN THE UNIT PRICE BID FOR CONSTRUCTION OF THE MAIN.
 - THE CONTRACTOR SHALL NOTIFY THE BUREAU OF HIGHWAYS, HOWARD COUNTY, AT (410)819-7450 AT LEAST 5 WORKING DAYS BEFORE OPEN CUTTING OR BORING/JACKING OF ANY COUNTY ROAD FOR LAYING WATER/SEWER MAINS OR HOUSE CONNECTIONS. THE APPROVAL OF THESE DRAWINGS WILL CONSTITUTE COMPLIANCE WITH DPW REQUIREMENTS PER SECTION 18.114(a) OF THE HOWARD COUNTY CODE.

- II. STANDARD WATER MAIN GENERAL NOTES**
- ALL WATER MAINS TO BE D.I.P. CLASS 52 UNLESS OTHERWISE NOTED.
 - TOPS OF ALL WATER MAINS TO HAVE A MINIMUM OF 3'-6" OF COVER UNLESS OTHERWISE NOTED.
 - VALVES ADJACENT TO TREES SHALL BE STRAPPED TO TREES.
 - ALL FITTING SHALL BE BUTTRESSED OR ANCHORED WITH CONCRETE IN ACCORDANCE WITH THE STANDARD DETAIL UNLESS OTHERWISE PROVIDED FOR IN THE DRAWINGS.
 - FIRE HYDRANTS SHALL BE SET TO THE BURY LINE ELEVATIONS SHOWN ON THE DRAWINGS. ALL FIRE HYDRANTS SHALL BE RESTRAINED AND BUTTRESSED WITH CONCRETE IN ACCORDANCE WITH THE STANDARD DETAILS. THE SOIL AROUND THE FIRE HYDRANT SHALL BE COMPACTED IN ACCORDANCE WITH SECTION 1000 AND 1005 OF THE STANDARD SPECIFICATIONS.
 - THE CONTRACTOR SHALL NOT OPERATE ANY WATER MAIN VALVES ON THE EXISTING WATER SYSTEM.
 - ALL WATER HOUSE CONNECTIONS SHALL BE FOR INSIDE METER SETTING UNLESS OTHERWISE NOTED ON PLANS OR IN SPECIFICATIONS.
 - FOR SPRINKLER SYSTEM FOR ALL TOWN HOMES OR MULTI-FAMILY DWELLING UNITS SHOULD HAVE A MINIMUM OF 1' CONNECTION WITH A 3/4" METER.

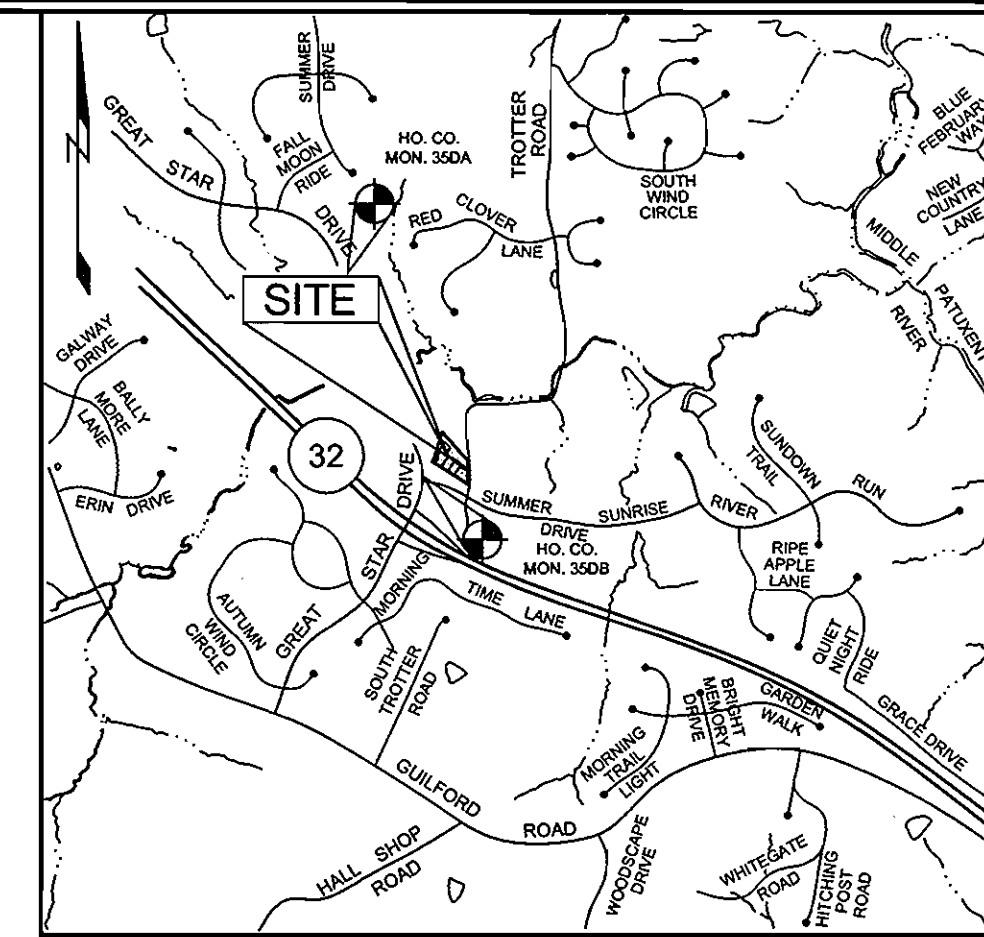
- III. STANDARD SEWER MAIN GENERAL NOTES**
- ALL SEWER MAINS SHALL BE DIP OR P.V.C. UNLESS OTHERWISE NOTED.
 - ALL MANHOLES SHALL BE 4'-0" INSIDE DIAMETER UNLESS OTHERWISE NOTED.
 - FORCE MAINS SHALL BE D.I.P. ONLY.
 - MANHOLES SHOWN WITH 12" AND 16" WALLS ARE FOR BRICK MANHOLES ONLY.
 - MANHOLES DESIGNATED W.T. IN PLAN AND PROFILE SHALL HAVE WATERTIGHT FRAME AND COVERS, STANDARD DETAIL G5.2. WHERE WATERTIGHT FRAME AND COVER IS USED, SET TOP OF FRAME 1'-0" ABOVE FINISHED GRADE UNLESS OTHERWISE NOTED ON DRAWINGS.
 - HOUSE(S) WITH THE SYMBOL "C.N.S." INDICATES THAT CELLAR CANNOT BE SERVED.

PUBLIC WATER AND SEWER PLAN

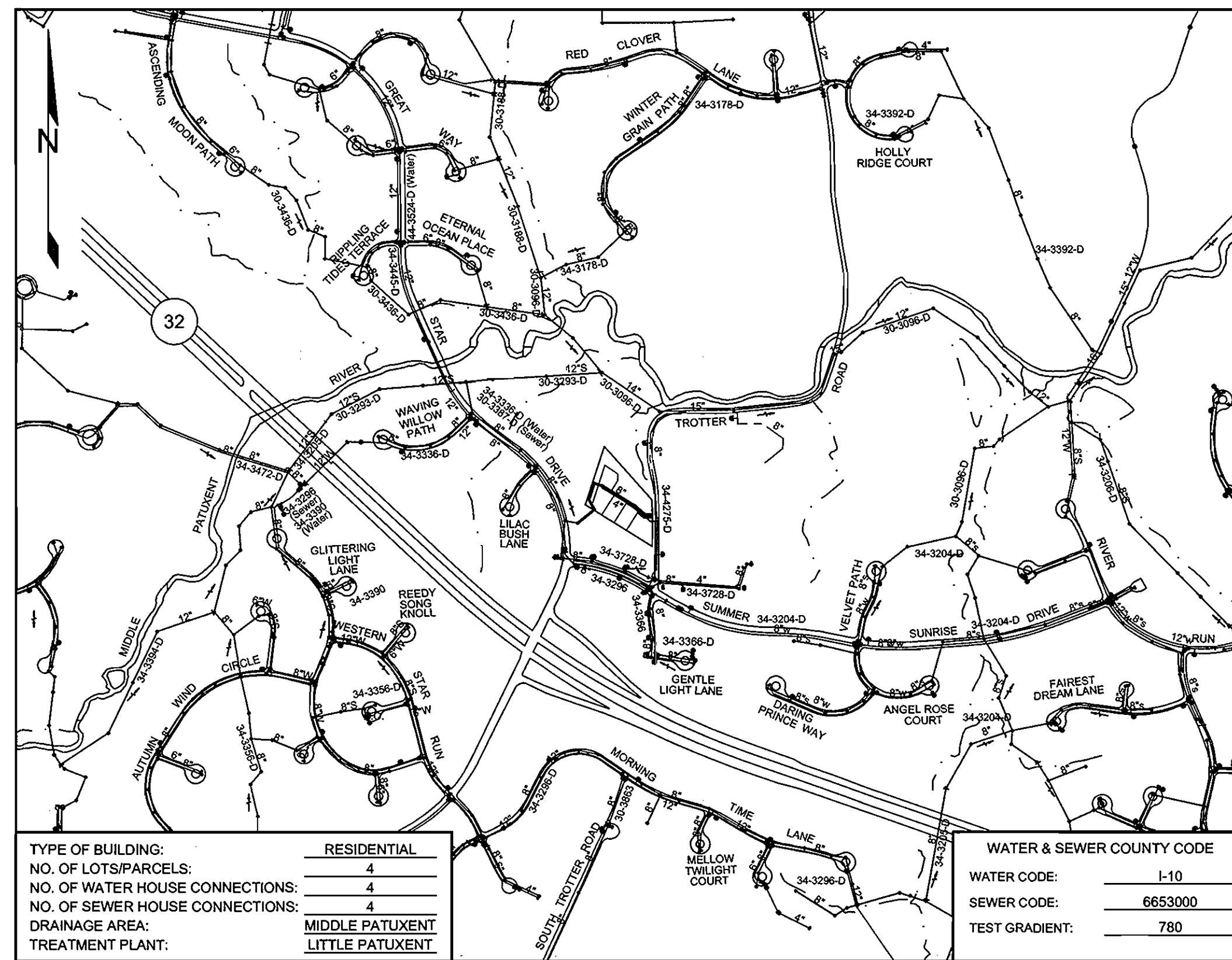
TROTTER PINES

HOWARD COUNTY, MARYLAND

CONTRACT NO. 34-4457-D



VICINITY MAP
SCALE: 1"=200'



TYPE OF BUILDING:	RESIDENTIAL
NO. OF LOTS/PARCELS:	4
NO. OF WATER HOUSE CONNECTIONS:	4
NO. OF SEWER HOUSE CONNECTIONS:	4
DRAINAGE AREA:	MIDDLE PATUXENT
TREATMENT PLANT:	LITTLE PATUXENT

WATER & SEWER COUNTY CODE	
WATER CODE:	I-10
SEWER CODE:	6653000
TEST GRADIENT:	780

LOCATION PLAN
SCALE: 1"=600'

BENCHMARKS				
NUMBER	NORTHING	EASTING	ELEVATION	DESCRIPTION
35DA	558,918.6174	1,333,137.3310	351.68'	1.6' NORTH OF CONCRETE INLET 3.9' EAST OF CONCRETE SIDEWALK
35DB	557,896.1467	1,333,974.5934	401.71'	7.3' EAST OF FACE OF CONCRETE CURB 46.9' NORTH OF LIGHT POLE

QUANTITIES				
NAME OF UTILITY CONTRACTOR:				
SURVEY AND DRAFTING DIVISION AS-BUILT:				
ITEMS	QUANTITIES ESTIMATED	QUANTITIES	TYPE	AS-BUILT MANUFACTURER/SUPPLIER
4" D.I.P. (WATER)	357 LF			
1" WHC	78 LF			
4"x8" TS & VALVE	1 EA			
1/8" HB	1 EA			
1/32" HB	1 EA			
1/16" VB	1 EA			
4" CAP & BUTTRESS	1 EA			
8" P.V.C. (SEWER)	480 LF			
4" SHC	72 LF			
SEWER MANHOLE	6 EA			

SEDIMENT CONTROL MEASURES WILL BE IMPLEMENTED IN ACCORDANCE WITH SECTION 219 OF THE STANDARD SPECIFICATIONS AND WITH ROAD CONSTRUCTION PLANS F-07-041

REVIEWED FOR HOWARD COUNTY SOIL CONSERVATION DISTRICT AND MEETS TECHNICAL REQUIREMENTS.

Jim [Signature] 3/19/07
U.S. SOIL CONSERVATION DISTRICT DATE
NATURAL RESOURCE

THIS DEVELOPMENT IS APPROVED FOR SOIL EROSION AND SEDIMENT CONTROL BY THE HOWARD COUNTY SOIL CONSERVATION DISTRICT.

[Signature] 3/19/07
SOIL CONSERVATION DISTRICT DATE

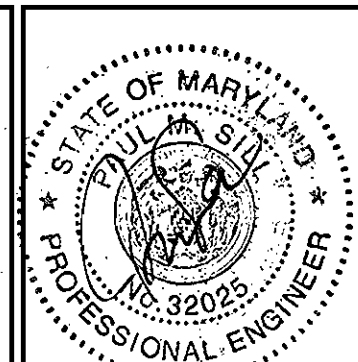
DEPARTMENT OF PUBLIC WORKS
HOWARD COUNTY, MARYLAND

[Signature] 3/19/07
CHIEF, BUREAU OF UTILITIES DATE

DEPARTMENT OF PLANNING AND ZONING
HOWARD COUNTY, MARYLAND

[Signature] 3/22/07
CHIEF, DEVELOPMENT ENGINEERING DIVISION DATE

Sill · Adcock & Associates · LLC
Engineers · Surveyors · Planners
3300 North Ridge Road, Suite 160
Ellicott City, Maryland 21043
Phone: 443.325.7682 Fax: 443.325.7685
Email: info@sasalland.com



DESIGNED BY: JT
DRAWN BY: JT
CHECKED BY: PS
DATE: FEB. 27, 2007

NO.	REVISIONS DESCRIPTION	DATE
1	REVISE QUANTITIES TABLE	9-28-07

COVER SHEET

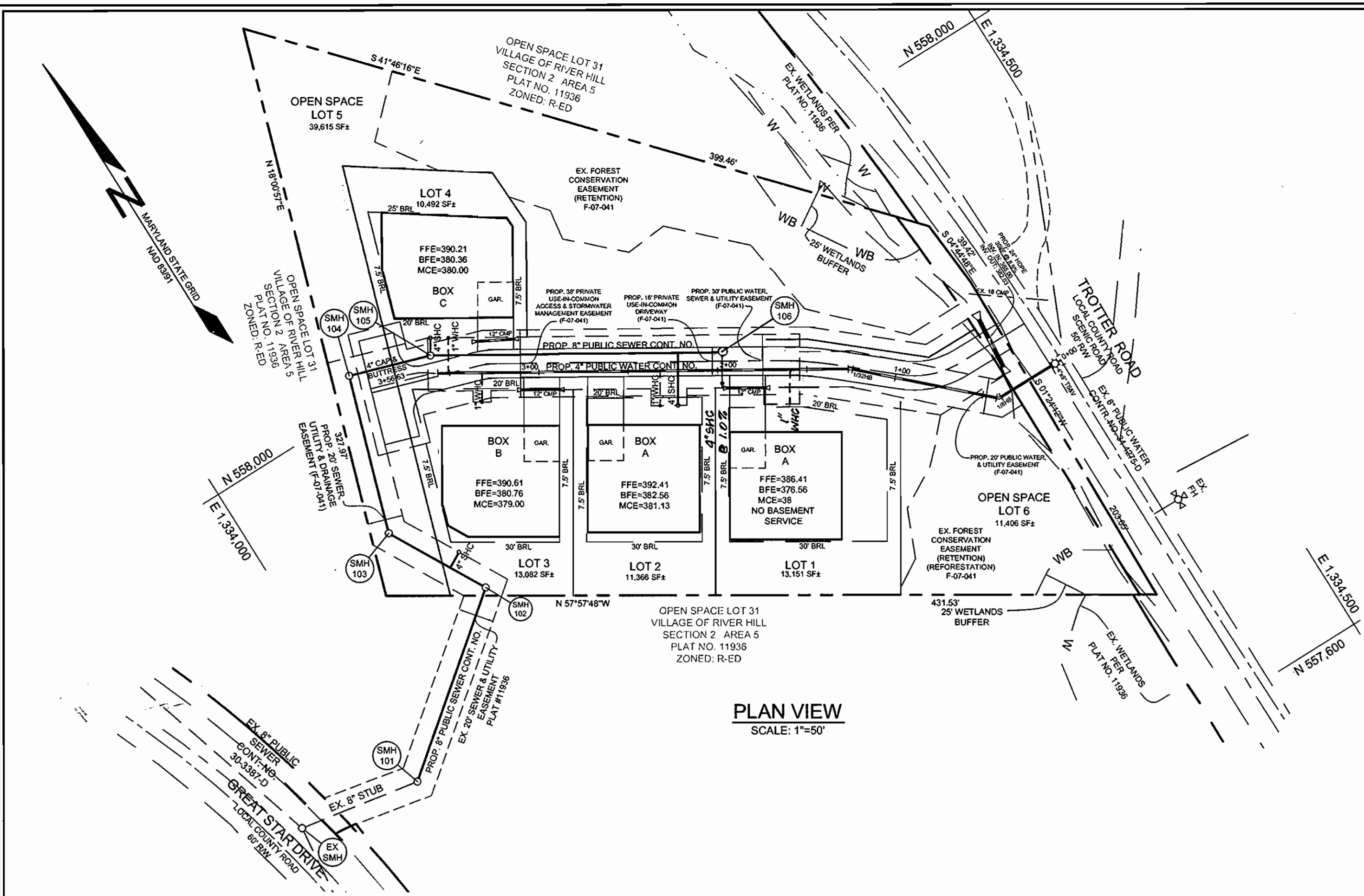
600' SCALE MAP NO. 35 BLOCK NO. 14

TROTTER PINES
LOTS 1-4 AND OPEN SPACE LOTS 5 AND 6

TAX MAP 35 GRID 14 PARCEL 157
5TH ELECTION DISTRICT HOWARD COUNTY, MARYLAND

CONTRACT NO. 34-4457-D

SCALE: AS SHOWN
SHEET NO. 1 OF 2

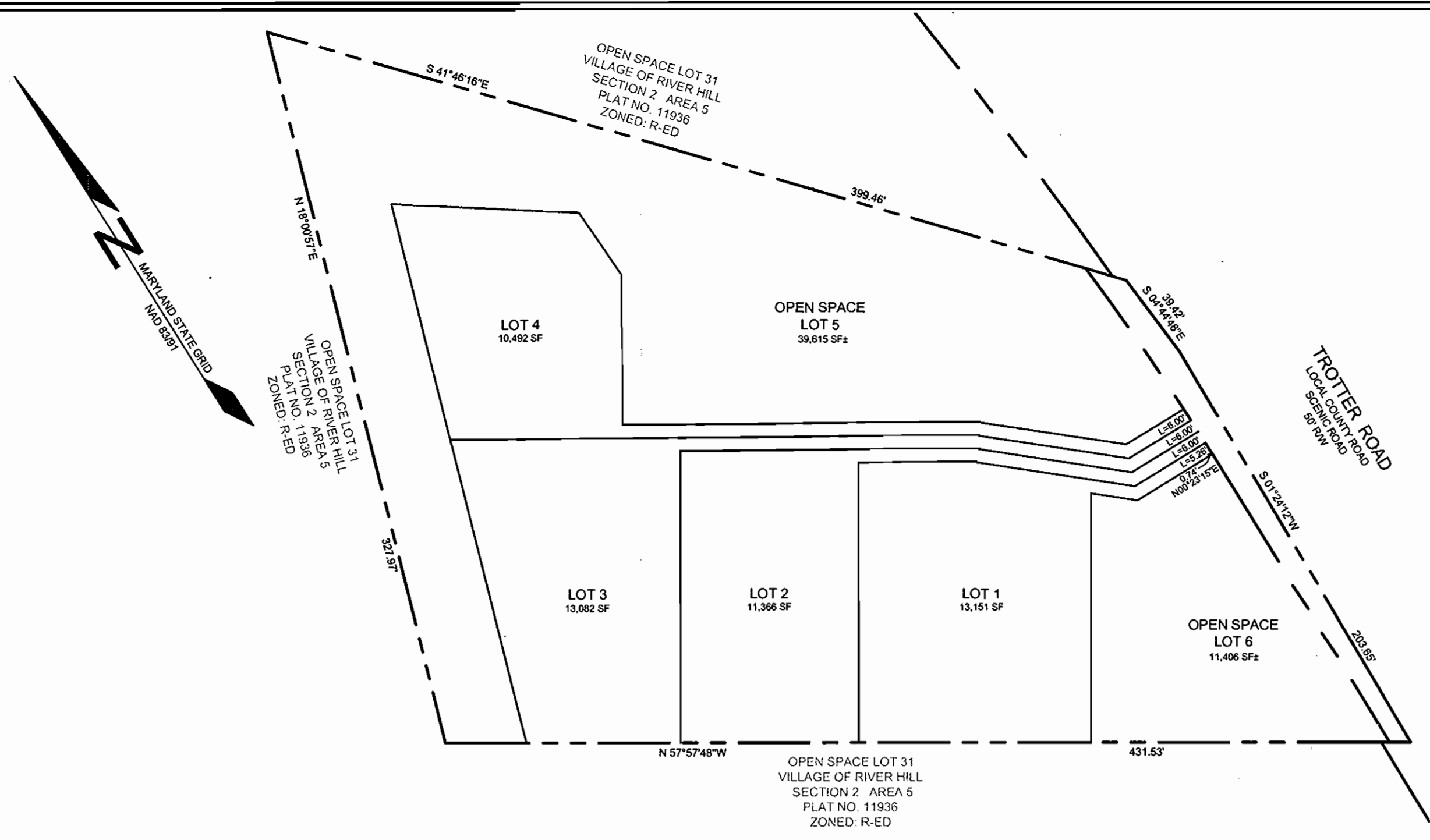


PLAN VIEW
SCALE: 1"=50'

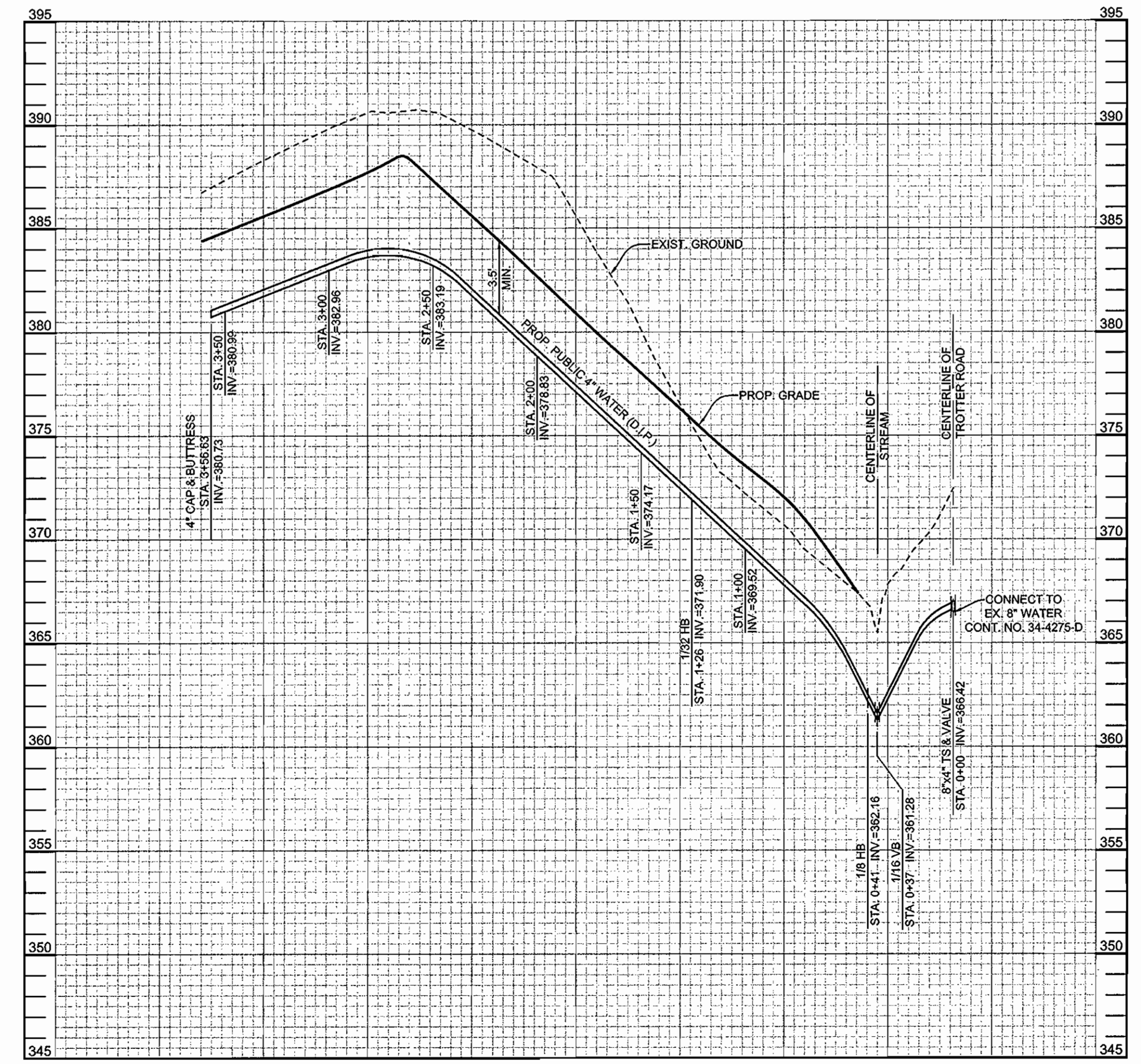
SEWER HOUSE CONNECTION SCHEDULE			
LOT NO.	INVERT @ MAIN	INVERT @ RW	MIN. CELLAR ELEV.
1	377.61	378.11	381.77
2	377.48	378.06	381.13
3	375.27	375.59	379.00
4	376.54	378.74	380.00

STRUCTURE SCHEDULE						
NO.	TYPE	LOCATION	TOP ELEV.	INV. IN	INV. OUT	REMARKS
101	STD. 4" PRECAST MANHOLE	N 557,804 E 1,334,008	381.65	374.31	374.21	G-5.12
102	STD. 4" PRECAST MANHOLE	N 557,876 E 1,334,099	382.30	374.99	374.89	G-5.12
103	STD. 4" PRECAST MANHOLE	N 557,930 E 1,334,089	379.50	375.40	375.30	G-5.12
104	STD. 4" PRECAST MANHOLE	N 558,017 E 1,334,097	382.75	375.96	375.86	G-5.12
105	STD. 4" PRECAST MANHOLE	N 558,002 E 1,334,142	384.00	376.30	376.20	G-5.12
106	STD. 4" PRECAST MANHOLE	N 557,917 E 1,334,222	382.76	377.46	377.46	G-5.12

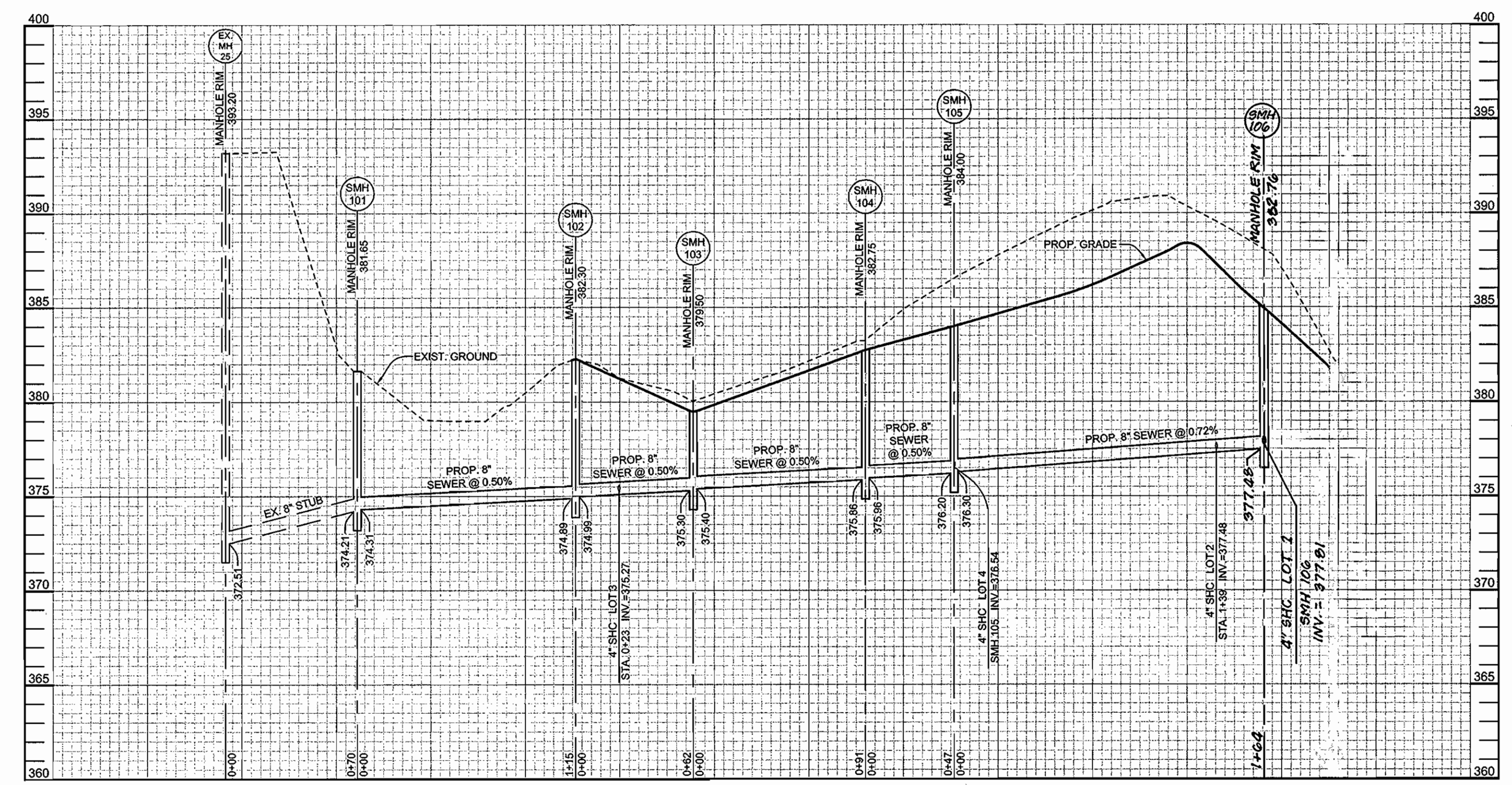
NOTES:
 1. TOP ELEVATIONS FOR PRECAST MANHOLES ARE TO THE CENTER TOP OF MANHOLE COVER.
 2. TOP SLOPE OF STRUCTURES TO CONFORM TO SLOPE OF PAVING/GROUND.
 3. LOCATION COORDINATES ARE CENTER OF STRUCTURE FOR MANHOLES.



ROAD FRONTAGE DETAIL
SCALE: 1"=50'



WATER PROFILE
SCALE: HORIZ.: 1"=50'
VERT.: 1"=5'

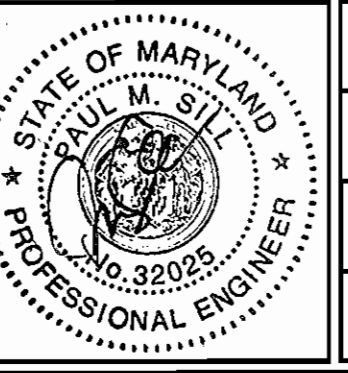


SEWER PROFILE
SCALE: HORIZ.: 1"=50'
VERT.: 1"=5'

DEPARTMENT OF PUBLIC WORKS
HOWARD COUNTY, MARYLAND
3/12/07

DEPARTMENT OF PLANNING AND ZONING
HOWARD COUNTY, MARYLAND
3/23/07

Sill · Adcock & Associates · LLC
Engineers · Surveyors · Planners
3300 North Ridge Road, Suite 160
Ellicott City, Maryland 21043
Phone: 443.325.7682 Fax: 443.325.7685
Email: info@silladcock.com



DESIGNED BY: JT
 DRAWN BY: JT
 CHECKED BY: PS
 DATE: FEB. 27, 2007

NO.	DESCRIPTION	DATE
1	REVISE SMH 106 & SHC FOR LOT 1	0-28-07

WATER AND SEWER PLAN AND PROFILES
 600' SCALE MAP NO. 35 BLOCK NO. 14

TROTTER PINES
 LOTS 1-4 AND OPEN SPACE LOTS 5 AND 6
 TAX MAP 35 GRID 14 PARCEL 157
 5TH ELECTION DISTRICT HOWARD COUNTY, MARYLAND
 CONTRACT NO. 34-4457-D

SCALE: AS SHOWN
 SHEET NO. 2 OF 2