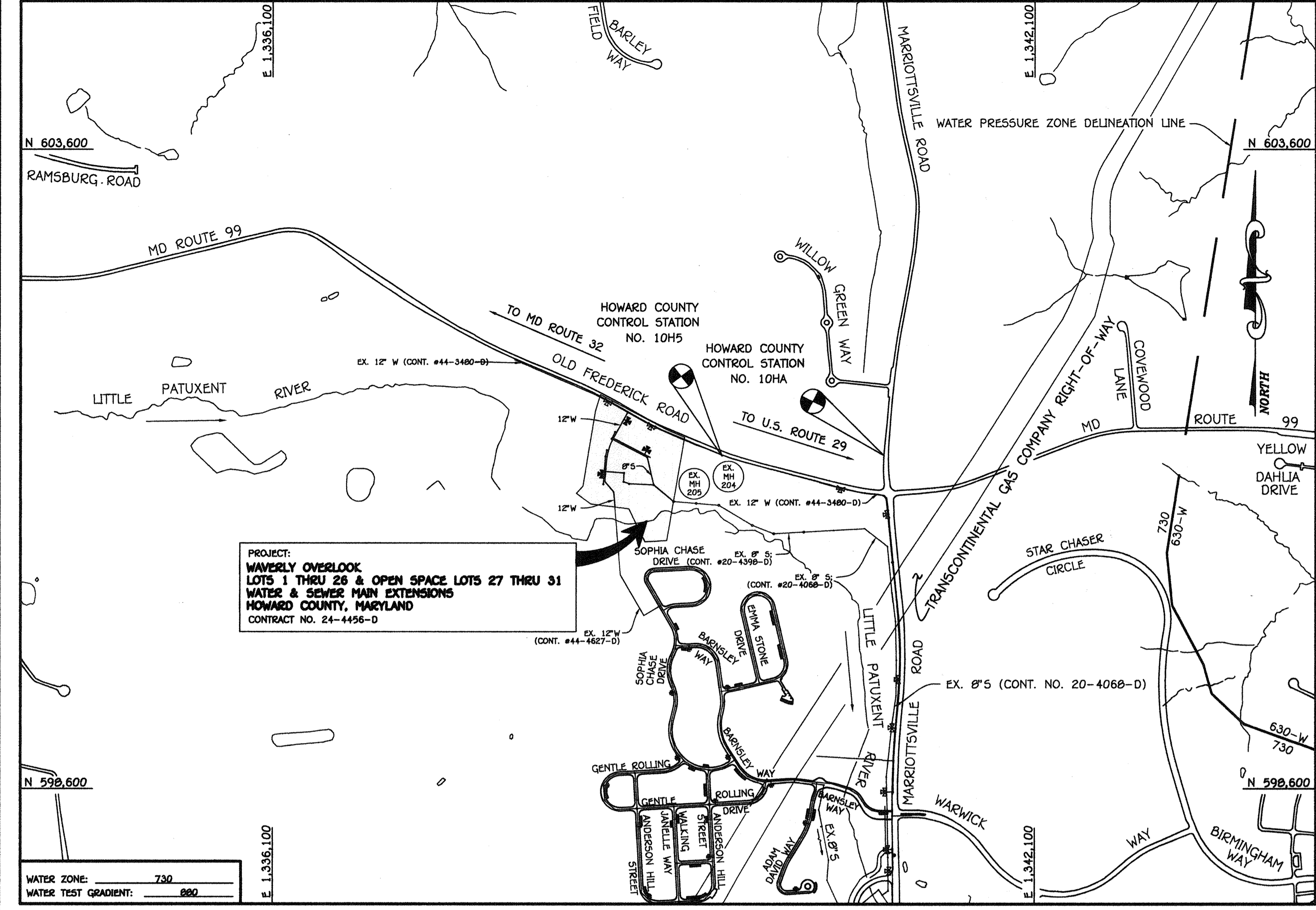


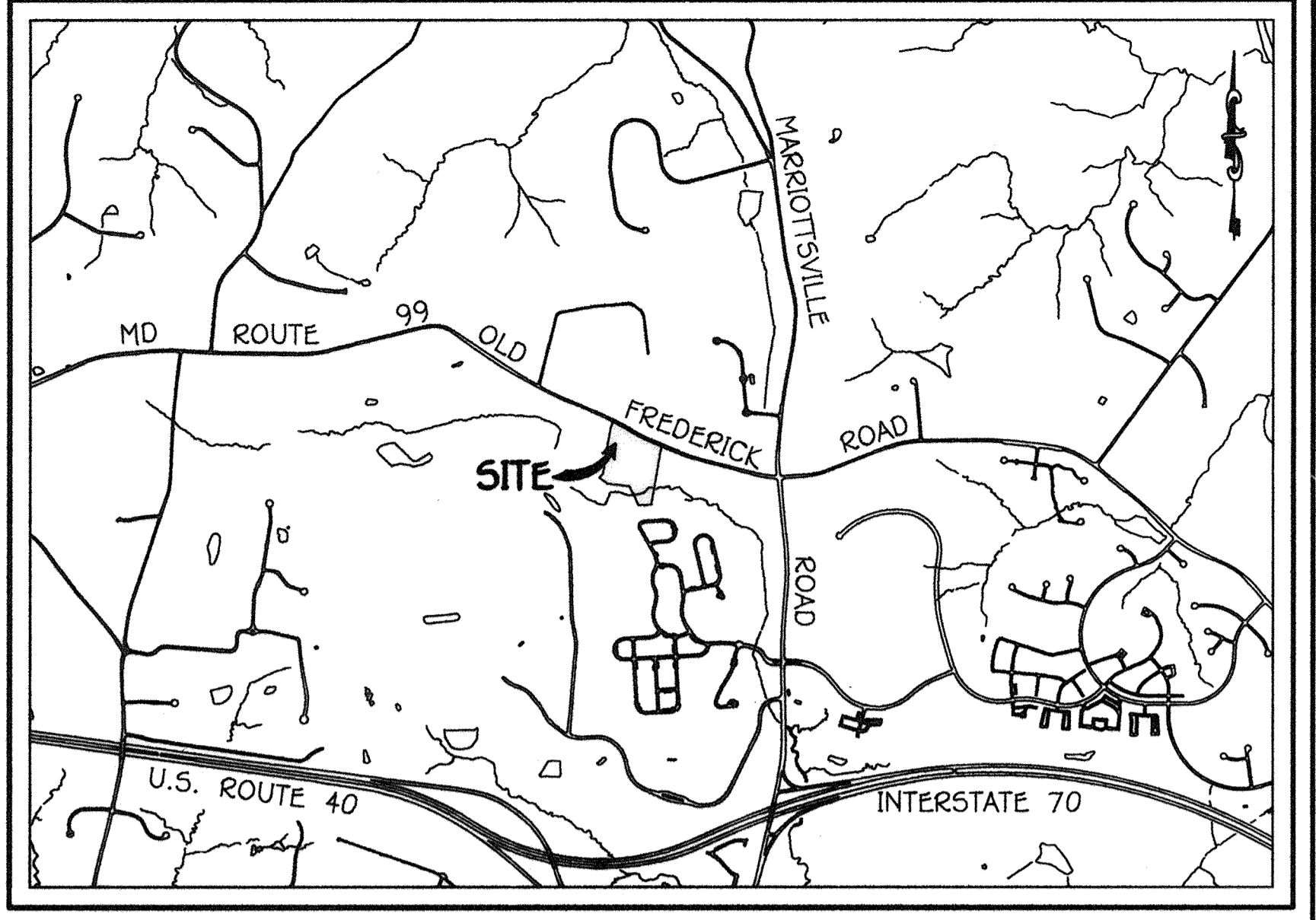
QUANTITIES				
ITEM	ESTIMATED	QUANTITIES	AS-BUILT TYPE	MANUFACTURER
8" PVC-900	655 LF	6185 LF	C-900	JM EAGLE
8" SEWER	1,475 LF	783.5 LF	C-900 PVC/SDR-35	JM EAGLE
4" SEWER	804 LF	783.5 LF	C-900 PVC/SDR-35	JM EAGLE
MANHOLES	11 EACH	110 EA	PRE-CAST	ATLANTIC CONC.
12" WATER	807 LF	858.29 LF	C-900 PVC	BEAL & BROS SUPP.
8" WATER	325 LF	325.0 LF	C-900 PVC	JM EAGLE
6" WATER	124 LF	150.5 LF	C-900 PVC	JM EAGLE
1/2" 4" WATER	1,033 LF	874.0 LF	1/2" COPPER TUBING	MUELLER CO.
12" X 12" TAPPING SLEEVE	1 EACH	1.0 EA	STAINLESS STEEL	ROMAC, INC.
12" TAPPING VALVE	1 EACH	1.0 EA	DIP	MUELLER CO.
12" VALVE	2 EACH	2.0 EA	DIP	MUELLER CO.
8" VALVE	1 EACH	1.0 EA	DIP	MUELLER CO.
6" VALVE	3 EACH	3.0 EA	DIP	MUELLER CO.
2" H.B.	1 EACH	1.0 EA	DIP	CERTAIN TEEB
1/8 H.B.	1 EACH	1.0 EA	DIP	CERTAIN TEEB
1/16 H.B.	1 EACH	1.0 EA	DIP	CERTAIN TEEB
1/32 H.B.	1 EACH	1.0 EA	DIP	CERTAIN TEEB
12" X 6" TEE	1 EACH	1.0 EA	DIP	CERTAIN TEEB
12" X 6" TEE	2 EACH	2.0 EA	DIP	CERTAIN TEEB
8" X 6" TEE	1 EACH	1.0 EA	DIP	CERTAIN TEEB
FIRE HYDRANT	5 EACH	5.0 EA	DIP	MUELLER CO.
8" PLUG & BUTTRESS	1 EACH	1.0 EA	DIP	CERTAIN TEEB
CABLE TEST STATION	2 EACH	4.0 EA	BLACK POLY.	VESTAL MFG
OUTSIDE WTR. MTR. SETBACK	26 EACH	26.0 EA	OUTSIDE WTR. MTR.	RY McDONALD

NAME OF UTILITY CONTRACTOR: CCC, INC.
 SURVEY & DRAFTING DIVISION AS-BUILT DATE:



TYPE OF BUILDING:	RESIDENTIAL: SINGLE FAMILY DETACHED
NUMBER OF LOTS:	31 (26 BUILDABLE)
NO. OF WATER HOUSE CONNECTIONS:	26
NO. OF SEWER HOUSE CONNECTIONS:	26
DRAINAGE AREA:	LITTLE PATUXENT
TREATMENT PLANT:	LITTLE PATUXENT WATER RECLAMATION CENTER, SAVAGE MD

VICINITY MAP
SCALE: 1" = 600'



LOCATION MAP
SCALE: 1" = 2000'

GENERAL NOTES

- PART A:
- APPROXIMATE LOCATIONS OF EXISTING MAINS ARE SHOWN. THE CONTRACTOR SHALL TAKE ALL NECESSARY PRECAUTIONS TO PROTECT EXISTING MAINS AND SERVICES AND MAINTAIN UNINTERRUPTED SERVICE. ANY DAMAGE INCURRED SHALL BE REPAIRED IMMEDIATELY TO THE SATISFACTION OF THE CONTRACTOR AT THE CONTRACTOR'S EXPENSE.
 - TOPOGRAPHIC FIELD SURVEYS WERE PERFORMED ON OR ABOUT FEBRUARY, 2006 BY FISHER, COLLINS & CARTER, INC.
 - THE COORDINATES SHOWN ON THE DRAWINGS ARE BASED ON MARYLAND STATE REFERENCE SYSTEM NAD '83/91' AS PROJECTED BY HOWARD COUNTY GEODETIC CONTROL STATIONS NO. 10HA & NO. 10H5.
 - ALL VERTICAL CONTROLS ARE BASED ON NAVD '83 VERTICAL CONTROLS PROVIDED ON THE DRAWINGS.
 - ALL PIPE ELEVATIONS SHOWN ARE INVERT ELEVATIONS UNLESS OTHERWISE NOTED ON THE PLANS.
 - CLEAR ALL UTILITIES BY A MINIMUM OF 12 INCHES. CLEAR ALL POLES BY 9'-0" MINIMUM OR TUNNEL AS REQUIRED UNLESS OTHERWISE NOTED. THE OWNER HAS CONTACTED THE UTILITY COMPANIES AND HAS MADE ARRANGEMENTS FOR BRACING OF POLES AS SHOWN ON THE DRAWINGS. IN THE EVENT THE CONTRACTOR'S WORK REQUIRES BRACING OF ADDITIONAL POLES, ANY COST INCURRED BY THE OWNER FOR THE BRACING OF THE ADDITIONAL POLES OR DAMAGES SHALL BE DEDUCTED FROM MONIES OWED THE CONTRACTOR. THE CONTRACTOR SHALL COORDINATE WITH THE UTILITY COMPANIES TO SCHEDULE THE BRACING OF THE POLES.
 - FOR DETAILS NOT SHOWN ON THE DRAWINGS, AND FOR MATERIALS AND CONSTRUCTION METHODS, USE HOWARD COUNTY DESIGN MANUAL VOLUME IV, STANDARD SPECIFICATIONS AND DETAILS FOR CONSTRUCTION (LATEST EDITION). THE CONTRACTOR SHALL HAVE A COPY OF VOLUME IV ON THE JOB SITE.
 - WHERE TEST PITS HAVE BEEN MADE ON EXISTING UTILITIES, THEY ARE NOTED BY THE SYMBOL (S) AT THE LOCATIONS OF THE TEST PITS. A NOTE OR NOTES CONTAINING THE RESULTS OF THE TEST PIT OR FITS IS INCLUDED ON THE DRAWINGS. EXISTING UTILITIES IN THE VICINITY OF THE PROPOSED WORK FOR WHICH TEST PITS HAVE NOT BEEN DUG SHALL BE LOCATED BY THE CONTRACTOR TWO WEEKS IN ADVANCE OF CONSTRUCTION OPERATIONS AT HIS OWN EXPENSE.
 - THE CONTRACTOR SHALL NOTIFY THE FOLLOWING UTILITY COMPANIES OR AGENCIES AT LEAST FIVE WORKING DAYS BEFORE STARTING WORK SHOWN ON THESE PLANS:
 - AT&T 1-800-252-1133
 - BGE (CONSTRUCTION SERVICES) 410-850-4620
 - BGE (EMERGENCY) 410-889-1400
 - BUREAU OF UTILITIES 410-313-4900
 - COLONIAL PIPELINE CO 410-795-1990
 - MISS UTILITY 1-800-257-7777
 - STATE HIGHWAY ADMINISTRATION 410-531-5933
 - VERIZON 1-800-743-0033/410-224-9210
- PART B: WATER MAIN GENERAL NOTES
- EXCEPT FOR THE 12" X 12" TAPPING SLEEVE & VALVE ALL WATER MAINS SHALL BE AWWA C900 PVC PIPE.
 - TOPS OF ALL WATER MAINS SHALL HAVE A MINIMUM OF 3'-6" OF COVER UNLESS OTHERWISE NOTED.
 - VALVES ADJACENT TO TEES SHALL BE STRAPPED TO TEES.
 - ALL FITTINGS SHALL BE BUTTRESSED OR ANCHORED WITH CONCRETE IN ACCORDANCE WITH STANDARD DETAILS UNLESS OTHERWISE PROVIDED FOR ON THE DRAWINGS.
 - FIRE HYDRANTS SHALL BE SET TO THE BURY LINE ELEVATIONS SHOWN ON THE DRAWINGS. ALL FIRE HYDRANTS SHALL BE RESTRAINED AND BUTTRESSED WITH CONCRETE IN ACCORDANCE WITH THE STANDARD DETAILS. THE SOIL AROUND THE FIRE HYDRANT SHALL BE COMPACTED IN ACCORDANCE WITH SECTION 1000 AND SECTION 1009 OF THE STANDARD SPECIFICATIONS.
 - THE CONTRACTOR SHALL NOT OPERATE ANY WATER MAIN VALVES ON THE EXISTING WATER SYSTEM.
 - ALL WATER HOUSE CONNECTIONS SHALL BE FOR INSIDE METER SETTING UNLESS OTHERWISE NOTED ON THE PLANS OR IN THE SPECIFICATIONS.
 - FOR SPRINKLER SYSTEM FOR ALL TOWN HOMES OR MULTI-FAMILY DWELLING UNITS SHOULD HAVE A MINIMUM OF 1" CONNECTION WITH A 3/4" METER.
- PART C: SEWER MAIN GENERAL NOTES
- ALL SEWER MAINS SHALL BE D.I.P. OR P.V.C. UNLESS OTHERWISE NOTED.
 - ALL MANHOLES SHALL BE 41"-0" INSIDE DIAMETER UNLESS OTHERWISE NOTED.
 - FORCE MAINS SHALL BE D.I.P. ONLY.
 - MANHOLES SHOWN WITH 12" AND 18" WALLS ARE FOR BRICK MANHOLES ONLY.
 - MANHOLES DESIGNATED W.T. IN PLAN AND PROFILE SHALL HAVE WATER-TIGHT FRAME AND COVER, STANDARD DETAIL G5.52.
 - WHERE WATER-TIGHT MANHOLE FRAMES AND COVERS ARE USED, SET TOP OF FRAME 1'-6" ABOVE FINISHED GRADE UNLESS OTHERWISE NOTED ON THE DRAWINGS.
 - FOUR (4) WITH THE SYMBOL "C.N.S." INDICATES THAT CELLAR CANNOT BE SERVED.

- PART C: SEWER MAIN GENERAL NOTES (continued)
- EXCEPT FOR THE 12" X 12" TAPPING SLEEVE & VALVE ALL SEWER MAINS SHALL BE AWWA C900 PVC PIPE.
 - TOPS OF ALL SEWER MAINS SHALL HAVE A MINIMUM OF 3'-6" OF COVER UNLESS OTHERWISE NOTED.
 - VALVES ADJACENT TO TEES SHALL BE STRAPPED TO TEES.
 - ALL FITTINGS SHALL BE BUTTRESSED OR ANCHORED WITH CONCRETE IN ACCORDANCE WITH STANDARD DETAILS UNLESS OTHERWISE PROVIDED FOR ON THE DRAWINGS.
 - FIRE HYDRANTS SHALL BE SET TO THE BURY LINE ELEVATIONS SHOWN ON THE DRAWINGS. ALL FIRE HYDRANTS SHALL BE RESTRAINED AND BUTTRESSED WITH CONCRETE IN ACCORDANCE WITH THE STANDARD DETAILS. THE SOIL AROUND THE FIRE HYDRANT SHALL BE COMPACTED IN ACCORDANCE WITH SECTION 1000 AND SECTION 1009 OF THE STANDARD SPECIFICATIONS.
 - THE CONTRACTOR SHALL NOT OPERATE ANY WATER MAIN VALVES ON THE EXISTING WATER SYSTEM.
 - ALL WATER HOUSE CONNECTIONS SHALL BE FOR INSIDE METER SETTING UNLESS OTHERWISE NOTED ON THE PLANS OR IN THE SPECIFICATIONS.
 - FOR SPRINKLER SYSTEM FOR ALL TOWN HOMES OR MULTI-FAMILY DWELLING UNITS SHOULD HAVE A MINIMUM OF 1" CONNECTION WITH A 3/4" METER.

- PART C: SEWER MAIN GENERAL NOTES (continued)
- EXCEPT FOR THE 12" X 12" TAPPING SLEEVE & VALVE ALL SEWER MAINS SHALL BE AWWA C900 PVC PIPE.
 - TOPS OF ALL SEWER MAINS SHALL HAVE A MINIMUM OF 3'-6" OF COVER UNLESS OTHERWISE NOTED.
 - VALVES ADJACENT TO TEES SHALL BE STRAPPED TO TEES.
 - ALL FITTINGS SHALL BE BUTTRESSED OR ANCHORED WITH CONCRETE IN ACCORDANCE WITH STANDARD DETAILS UNLESS OTHERWISE PROVIDED FOR ON THE DRAWINGS.
 - FIRE HYDRANTS SHALL BE SET TO THE BURY LINE ELEVATIONS SHOWN ON THE DRAWINGS. ALL FIRE HYDRANTS SHALL BE RESTRAINED AND BUTTRESSED WITH CONCRETE IN ACCORDANCE WITH THE STANDARD DETAILS. THE SOIL AROUND THE FIRE HYDRANT SHALL BE COMPACTED IN ACCORDANCE WITH SECTION 1000 AND SECTION 1009 OF THE STANDARD SPECIFICATIONS.
 - THE CONTRACTOR SHALL NOT OPERATE ANY WATER MAIN VALVES ON THE EXISTING WATER SYSTEM.
 - ALL WATER HOUSE CONNECTIONS SHALL BE FOR INSIDE METER SETTING UNLESS OTHERWISE NOTED ON THE PLANS OR IN THE SPECIFICATIONS.
 - FOR SPRINKLER SYSTEM FOR ALL TOWN HOMES OR MULTI-FAMILY DWELLING UNITS SHOULD HAVE A MINIMUM OF 1" CONNECTION WITH A 3/4" METER.

BENCHMARK INFORMATION

B.M.#1 - HOWARD COUNTY CONTROL STATION #10HA (NAD '83) (APPROX. 290 FT. FROM THE INTERSECTION OF OLD FREDERICK ROAD AND MARIOTTVILLE ROAD; ALONG THE WEST SIDE OF MARIOTTVILLE ROAD)	N 601,208.99 E 1,340,912.325 ELEVATION = 484.717 - VERTICAL - (NAVD '88)
B.M.#2 - HOWARD COUNTY CONTROL STATION #10H5 (NAD '83) (LOCATED ALONG OLD FREDERICK ROAD APPROX. 1,300 FT. WEST OF MARIOTTVILLE ROAD; ACROSS FROM HOUSE #1286)	N 601,201.918 E 1,339,637.671 ELEVATION = 523.439 - VERTICAL - (NAVD '88)

CONTRACT NO. 24-4456-D
WAVERLY OVERLOOK
LOTS 1 THRU 26 &
OPEN SPACE LOTS 27 THRU 31
WATER & SEWER MAIN EXTENSIONS
HOWARD COUNTY, MARYLAND

DEVELOPER'S CERTIFICATION
 I HEREBY CERTIFY THAT ALL DEVELOPMENT AND CONSTRUCTION WILL BE DONE ACCORDING TO THIS PLAN OF DEVELOPMENT AND PLAN FOR EROSION AND SEDIMENT CONTROL AND THAT ALL RESPONSIBLE PERSONNEL INVOLVED IN THE CONSTRUCTION PROJECT WILL HAVE A CERTIFICATE OF ATTENDANCE AT THE DEPARTMENT OF THE ENVIRONMENT APPROVED TRAINING PROGRAM FOR THE CONTROL OF SEDIMENT AND EROSION BEFORE BEGINNING THE PROJECT. I ALSO AUTHORIZE PERIODIC ON-SITE INSPECTION BY THE HOWARD SOIL CONSERVATION DISTRICT OR THEIR AUTHORIZED AGENTS, AS ARE DEEMED NECESSARY.
 Paul W. Kriebel; FOR: MORSBERGER, LLC 01-19-10
 SIGNATURE OF DEVELOPER DATE

ENGINEER'S CERTIFICATION
 I HEREBY CERTIFY THAT THIS PLAN FOR EROSION AND SEDIMENT CONTROL REPRESENTS A PRACTICAL AND WORKABLE PLAN BASED ON MY PERSONAL KNOWLEDGE OF THE SITE CONDITIONS AND THAT IT WAS PREPARED IN ACCORDANCE WITH THE REQUIREMENTS OF THE HOWARD SOIL CONSERVATION DISTRICT.
 Paul W. Kriebel 01/19/10
 SIGNATURE OF ENGINEER DATE

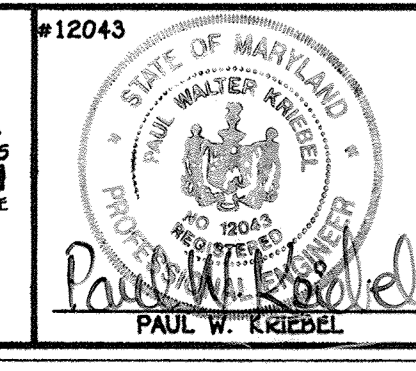
SEDIMENT CONTROL MEASURES FOR THIS CONTRACT WILL BE IMPLEMENTED IN ACCORDANCE WITH SECTION 219 OF THE HOWARD COUNTY DESIGN MANUAL & STANDARDS AND SPECIFICATIONS FOR SOIL EROSION AND SEDIMENT CONTROL IN DEVELOPING AREAS AND AS SHOWN ON F-10-027, AND ON THESE PLANS.
 Paul W. Kriebel; FOR: MORSBERGER, LLC 01-19-10
 SIGNATURE OF DEVELOPER DATE

GP-09-047
 THIS DEVELOPMENT IS APPROVED FOR EROSION AND SEDIMENT CONTROL BY HOWARD SOIL CONSERVATION DISTRICT.
 APPROVED: [Signature] 2/9/10
 HOWARD SOIL CONSERVATION DISTRICT DATE

DEPARTMENT OF PUBLIC WORKS
 HOWARD COUNTY, MARYLAND
[Signature] 2/10/10
 CHIEF, BUREAU OF UTILITIES DATE

DEPARTMENT OF PLANNING AND ZONING
 HOWARD COUNTY, MARYLAND
[Signature] 2/22/10
 CHIEF, DEVELOPMENT ENGINEERING DIVISION DATE

FISHER, COLLINS & CARTER, INC.
 CIVIL ENGINEERING CONSULTANTS & LAND SURVEYORS
 CENTRAL SERVICE OFFICE: 1827 WILSONS INDUSTRIAL PARK
 ELIOTT CITY, MARYLAND 21028
 (410) 461-2055
[Signature]
 PAUL W. KRIEBEL



DESIGNED BY:	B.C.R.	DATE:	
DRAWN BY:	B.C.R.	DATE:	
CHECKED BY:	KCL	DATE:	6/15/11
DATE:	9/7/10	REVISION:	1. REVISE THE ESTIMATED TOTAL FOR 8" SEWER
DATE:	9/7/10	REVISION:	2. DELETE ITEM FOR 8", DIP & DELETE ASSOCIATED TOTAL

WATER & SEWER MAIN EXTENSIONS
 TITLE SHEET
 600' SCALE MAP NO. 10 BLOCK NO. 21
 F.C.C. WORK ORDER NO. 04135
 FILE NAME: WATER & SEWER MAIN EXTENSION TITLE SHEET

WAVERLY OVERLOOK
 LOTS 1 THRU 26 &
 OPEN SPACE LOTS 27 THRU 31
 CONTRACT NO. 24-4456-D
 THIRD ELECTION DISTRICT
 HOWARD COUNTY, MARYLAND
 SCALE AS SHOWN
 SHEET 1 OF 4

I:\2004\04135\dwg\CURRENT FINAL R-20\04135 Water And Sewer Base Plan.dwg, 1/19/2010 9:54:56 AM

SHC MEASUREMENTS

LOT#	MEASUREMENT 1	MEASUREMENT 2
1	21' TO MH-209	74' TO MH-209
2	48' TO MH-209	25' TO MH-209
3	20' TO MH-208	12' TO MH-209
4	18' TO MH-213	49' TO MH-212
5	41' TO MH-213	17' TO MH-212
6(DHC)	66' TO MH-212	57' TO MH-211
7(DHC)	18' TO MH-211	16' TO F.H. ON MANSION OVERLOOK CT. @ STA. 5+25
8	60' TO MH-214	53' TO F.H. ON MANSION OVERLOOK CT. @ STA. 5+25
9	39' TO MH-214	74' TO F.H. ON MANSION OVERLOOK CT. @ STA. 5+25
10	33' TO MH-214	108' TO 6" VALVE FOR F.H. ON MANSION OVERLOOK CT. @ STA. 5+25
11	40' TO MH-214	115' TO 6" VALVE FOR F.H. ON MANSION OVERLOOK CT. @ STA. 5+25
12	61' TO MH-214	87' TO 6" VALVE FOR F.H. ON MANSION OVERLOOK CT. @ STA. 5+25
13(DHC)	56' TO MH-211	74' TO MH-214
14(DHC)	77' TO MH-212	55' TO MH-211
15	94' TO MH-212	94' TO MH-211
16	103' TO 8" VALVE @ STA. 0+06 ON MEGAN LYNN CT.	73' TO CBL. TEST STA. @ STA. 1+50 ON MEGAN LYNN CT. BY LOT #25
17	110' TO 6" VALVE @ F.H. @ STA. 2+75 ON MEGAN LYNN CT.	55' TO CBL. TEST STA. @ STA. 1+50 ON MEGAN LYNN CT. BY LOT #25
18	65' TO 6" VALVE @ F.H. @ STA. 2+75 ON MEGAN LYNN CT.	89' TO MH-207
19	77' TO 6" VALVE @ F.H. @ STA. 2+75 ON MEGAN LYNN CT.	64' TO MH-207
20(DHC)	77' TO MH-206	90' TO W.H.C. LOT #20
21	41' TO MH-207	75' TO F.H. ON MEGAN LYNN CT. @ STA. 2+75
22	31' TO F.H. ON MEGAN LYNN CT. @ STA. 2+75	45' TO MH-207
23	15' TO CBL. TEST STA. BY F.H. @ 2+75	25' TO 6" VALVE @ F.H. @ STA. 2+75 ON MEGAN LYNN CT.
24	74' TO F.H. ON MEGAN LYNN CT. @ STA. 2+75	67' TO CBL. TEST STA. BY F.H. @ 2+75 ON MEGAN LYNN CT.
25	152' TO 8" VALVE @ STA. 0+06 ON MEGAN LYNN CT.	15' TO CBL. TEST STA. BY LOT #25
26(DHC)	80' TO 8" VALVE @ STA. 0+06 ON MEGAN LYNN CT.	10' TO 12" VALVE ON MANSION OVERLOOK CT. @ STA. 2+37

12" TAPPING VALVE ON MD RT. 99

FROM	MEASUREMENT 1	MEASUREMENT 2
MD RT. 99	60.5' TO 6" VALVE FOR F.H. ON MANSION OVERLOOK CT. @ STA. 0+67	62' TO F.H. ON MANSION OVERLOOK CT. @ 0+67
F.H. ON MANSION OVERLOOK CT. @ 0+67	23' TO 6" VALVE FOR F.H. ON MANSION OVERLOOK CT. @ STA. 0+67	4' TO F.H. ON MANSION OVERLOOK CT. @ 0+67
CBL. TEST STA. BY F.H. @ STA. 0+67	24' TO 6" VALVE FOR F.H. ON MANSION OVERLOOK CT. @ STA. 0+67	4' TO F.H. ON MANSION OVERLOOK CT. @ 0+67
6" VALVE FOR F.H. ON MANSION OVERLOOK CT. @ STA. 0+67	4' TO 12" VALVE ON MANSION OVERLOOK CT. @ STA. 0+67	150' TO MH-210
12" VALVE ON MANSION OVERLOOK CT. @ STA. 0+67	25' TO F.H. ON MANSION OVERLOOK CT. @ 0+67	11' TO MH-208
MH-209	55' TO 12" VALVE ON MANSION OVERLOOK CT. @ STA. 2+37	51' TO MH-207
6" VALVE FOR F.H. ON MANSION OVERLOOK CT. @ STA. 2+25	24' TO F.H. ON MANSION OVERLOOK CT. @ STA. 2+25	26' TO CBL. TEST STA. BY F.H. @ STA. 2+75
MH-211	24' TO 6" VALVE FOR F.H. ON MANSION OVERLOOK CT. @ STA. 5+25	3' TO SHC LOT #15
F.H. ON MANSION OVERLOOK CT. @ STA. 5+25	45' TO MH-212	11' TO MH-208
CBL. TEST STA. BY LOT #15	5' TO 6" VALVE @ STA. 0+06 ON MEGAN LYNN CT.	
12" VALVE @ STA. 2+58 ON MANSION OVERLOOK CT.	51' TO MH-209	
8" VALVE @ STA. 0+06 ON MEGAN LYNN CT.	4' TO CBL. TEST STA. BY F.H. @ STA. 2+75	
F.H. ON MEGAN LYNN CT. @ STA. 2+75	35' TO 6" VALVE @ F.H. @ STA. 2+75 ON MEGAN LYNN CT.	
CBL. TEST STA. BY F.H. @ STA. 2+75 ON MEGAN LYNN CT.		

W.H.C. MEASUREMENTS (PART 1)

LOT#	MEASUREMENT 1	MEASUREMENT 2
1	29' TO MH-207	84' TO MH-208
2	40' TO MH-207	32' TO MH-208
3	40' TO MH-208	66' TO MH-213
4	22' TO MH-213	89' TO MH-208
5	49' TO MH-213	18' TO MH-212
6	60' TO MH-212	57' TO MH-211
7	20' TO MH-211	26' TO F.H. ON MANSION OVERLOOK CT. @ STA. 5+25
8	61' TO MH-214	46' TO F.H. ON MANSION OVERLOOK CT. @ STA. 5+25
9	47' TO MH-214	77' TO F.H. ON MANSION OVERLOOK CT. @ STA. 5+25
10	33' TO MH-214	111' TO 6" VALVE FOR F.H. ON MANSION OVERLOOK CT. @ STA. 5+25
11	45' TO MH-214	110' TO 6" VALVE FOR F.H. ON MANSION OVERLOOK CT. @ STA. 5+25
12	59' TO MH-214	90' TO 6" VALVE FOR F.H. ON MANSION OVERLOOK CT. @ STA. 5+25
13	72' TO MH-214	68' TO MH-211
14	46' TO MH-211	86' TO MH-212
15	39' TO MH-212	61' TO MH-213

DEPARTMENT OF PUBLIC WORKS
HOWARD COUNTY, MARYLAND

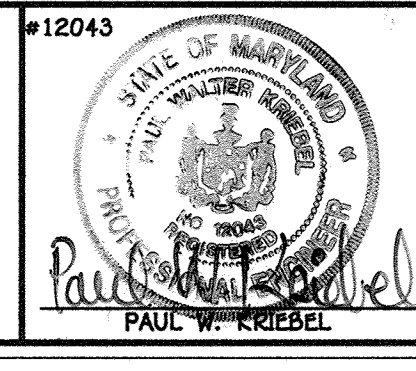
Chief, Bureau of Utilities

DEPARTMENT OF PLANNING AND ZONING
HOWARD COUNTY, MARYLAND

Chief, Development Engineering Division

FISHER, COLLINS & CARTER, INC.
CIVIL ENGINEERING CONSULTANTS & LAND SURVEYORS

10272 BALDWIN NATIONAL Pk.
ELLSWORTH CITY, MARYLAND 21041
(410) 461-2995



DESIGNED BY: B.C.R.
DRAWN BY: K.C.L.
CHECKED BY: P.W.K.
DATE: JANUARY, 2010

BY NO. 12043

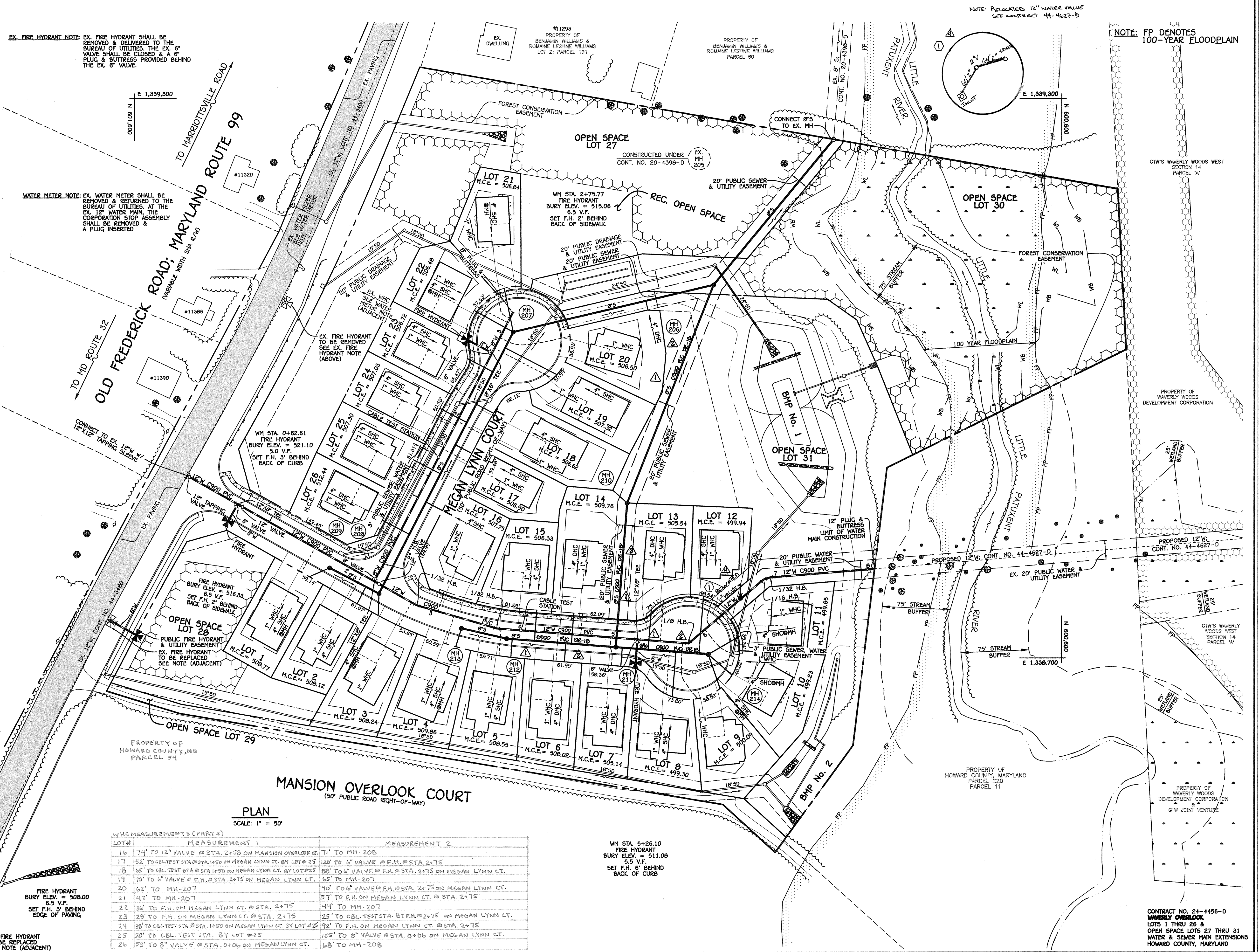
REVISION

WATER & SEWER MAIN EXTENSIONS PLAN

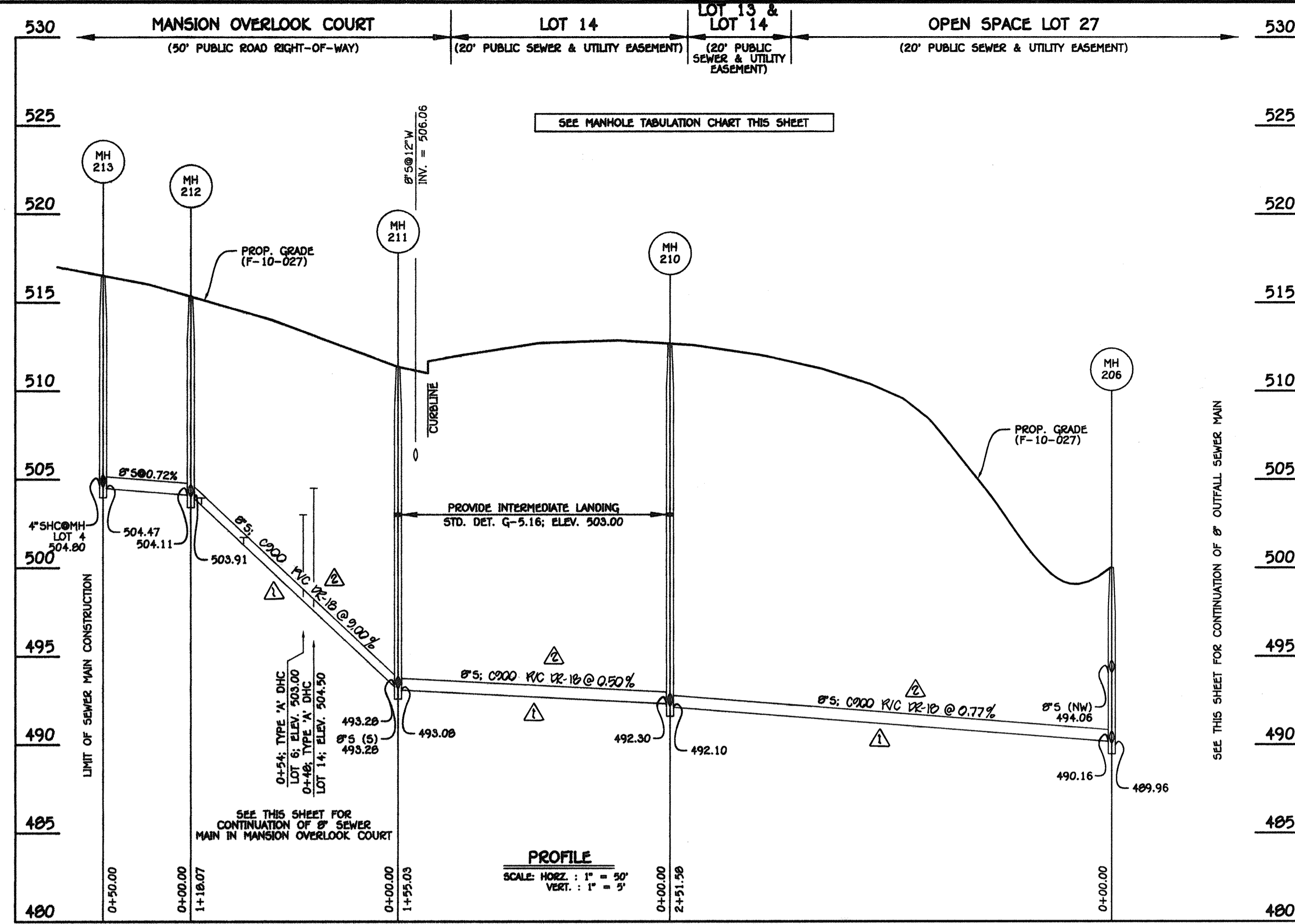
600' SCALE MAP NO. 10 BLOCK NO. 21
F.C.C. WORK ORDER NO. 04135

WAVELY OVERLOOK
LOTS 1 THRU 26 &
OPEN SPACE LOTS 27 THRU 31
CONTRACT NO. 24-4456-D
THIRD ELECTION DISTRICT
HOWARD COUNTY, MARYLAND

SCALE AS SHOWN
SHEET 2 OF 4



I:\2004\04135.dwg CURRENT FINAL R-20\04135 Water And Sewer Base Plan.dwg, 1/19/2010 9:55:36 AM



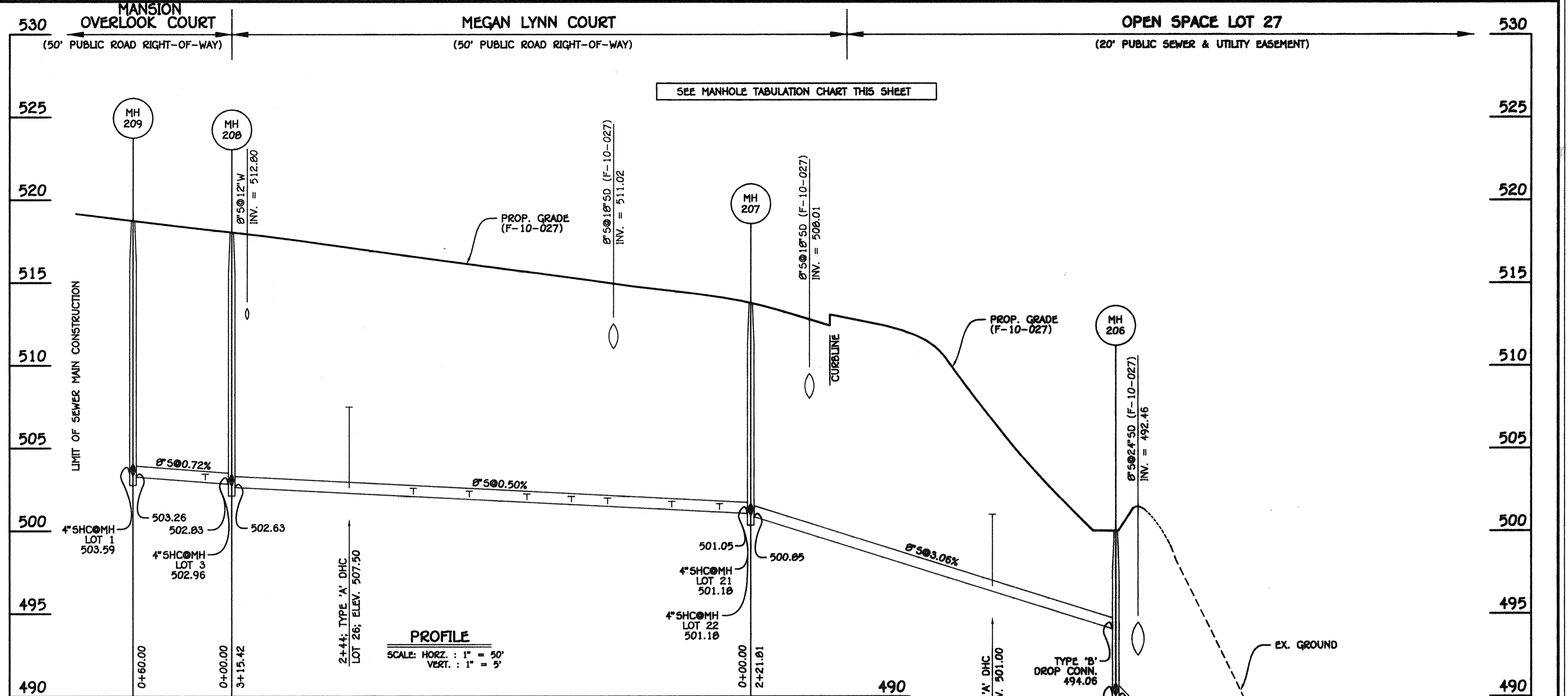
8" SEWER MAIN: MANSION OVERLOOK COURT & OUTFALL

SHC INVERT @ PROPERTY LINE CHART		
STATION	LOT	ELEVATION
MH 211 TO MH 212		
0+40 RT.	14 (DHC)	505.16
0+54 LT.	6 (DHC)	503.40
0+80 RT.	15	502.03
1+12 LT.	5	503.93
MH 212 TO MH 213		
0+00.00	4	505.20

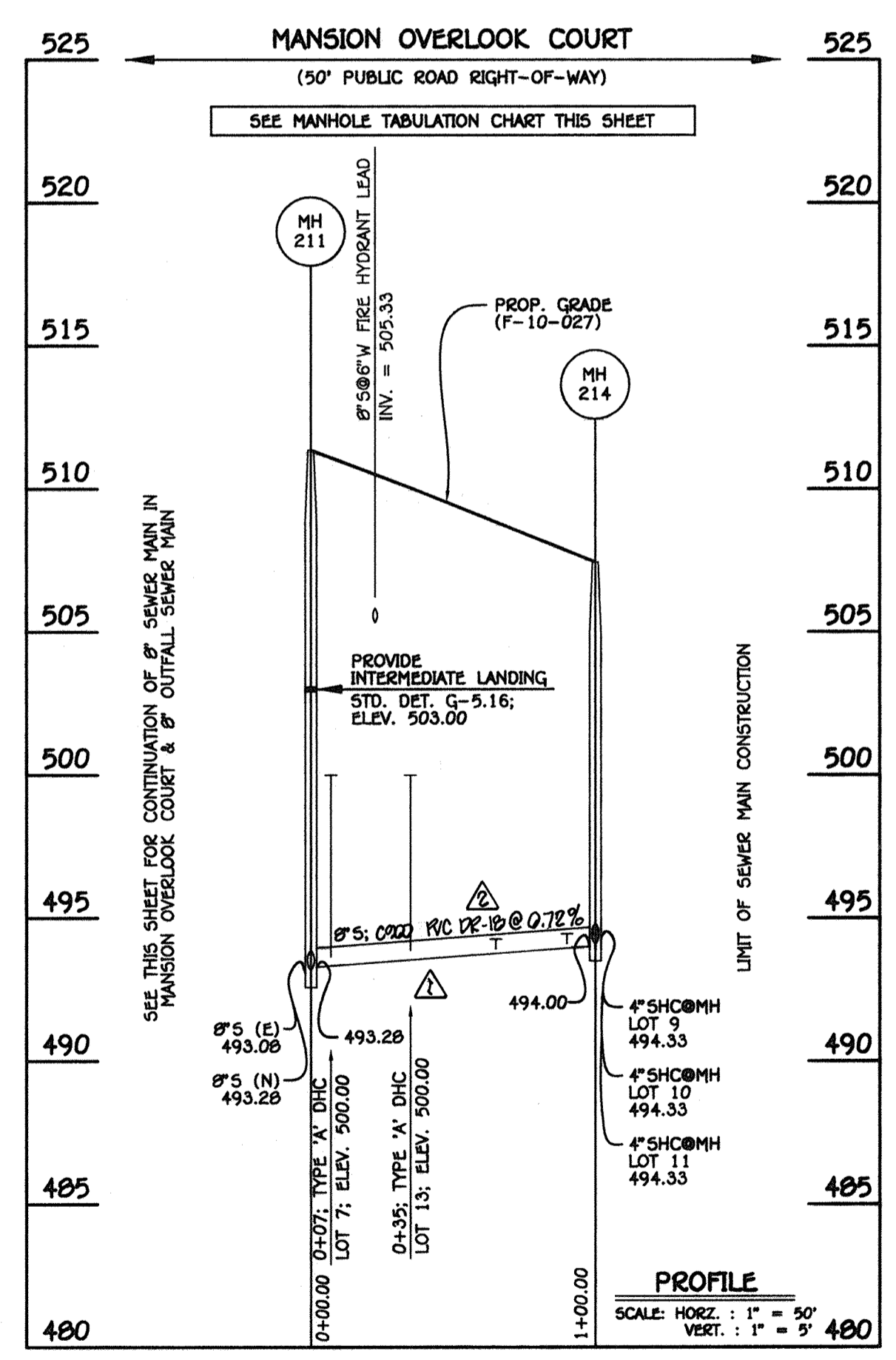
MANHOLE TABULATION CHART			
NO.	NORTHING	EASTING	RIM ELEVATION
206	600975.28	1339100.20	500.00
207	601191.28	1339049.73	513.50
208	601335.84	1338789.39	518.00
209	601389.17	1338796.89	518.75
210	601068.36	1338866.46	513.00
211	601080.48	1338711.91	511.35
212	601198.13	1338721.08	515.30
213	601246.89	1338732.13	516.58
214	600980.79	1338704.09	507.50

NOTE: SET MH RIMS FLUSH W/PROPOSED OR EXISTING GRADE, AS APPLICABLE.

SHC INVERT @ PROPERTY LINE CHART		
STATION	LOT	ELEVATION
MH 211 TO MH 214		
0+07 RT.	7 (DHC)	500.40
0+35 LT.	13 (DHC)	500.88
0+65 RT.	8	494.88
0+90 LT.	12	495.34
0+11 RT.	9	495.11
0+13 RT.	10	495.01
0+14 LT.	11	495.15



8" SEWER MAIN: MANSION OVERLOOK COURT, MEGAN LYNN COURT & OUTFALL



8" SEWER MAIN: MANSION OVERLOOK COURT

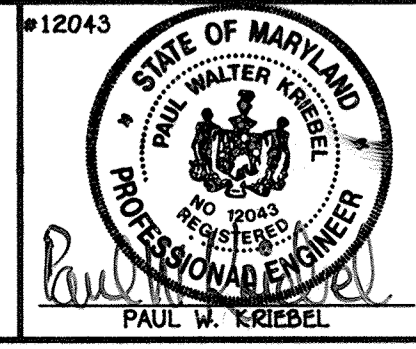
SHC INVERT @ PROPERTY LINE CHART		
STATION	LOT	ELEVATION
MH 206 TO MH 207		
0+75 LT.	20 (DHC)	501.20
0+11 RT.	21	502.14
0+17 RT.	22	502.14
MH 207 TO MH 208		
0+19 LT.	19	502.58
0+48 RT.	23	502.08
0+87 LT.	18	502.08
1+09 RT.	24	502.43
1+36 LT.	17	502.30
1+71 RT.	25	502.74
2+05 LT.	16	502.65
2+44 RT.	26 (DHC)	508.16
0+00.00	3	503.44
MH 208 TO MH 209		
0+16 LT.	2	503.92
0+00.00	1	504.07

CONTRACT NO. 24-4456-D
WAVERLY OVERLOOK
 LOTS 1 THRU 26 &
 OPEN SPACE LOTS 27 THRU 31
 WATER & SEWER MAIN EXTENSIONS
 HOWARD COUNTY, MARYLAND

DEPARTMENT OF PUBLIC WORKS
 HOWARD COUNTY, MARYLAND
 CHIEF, BUREAU OF UTILITIES
 DATE: 2/2/10

DEPARTMENT OF PLANNING AND ZONING
 HOWARD COUNTY, MARYLAND
 CHIEF, DEVELOPMENT ENGINEERING DIVISION
 DATE: 2/2/10

FISHER, COLLINS & CARTER, INC.
 CIVIL ENGINEERING CONSULTANTS & LAND SURVEYORS
 10720 BALTIMORE NATIONAL Pk.
 ELLETT CITY, MARYLAND 21042
 (410) 461-2995

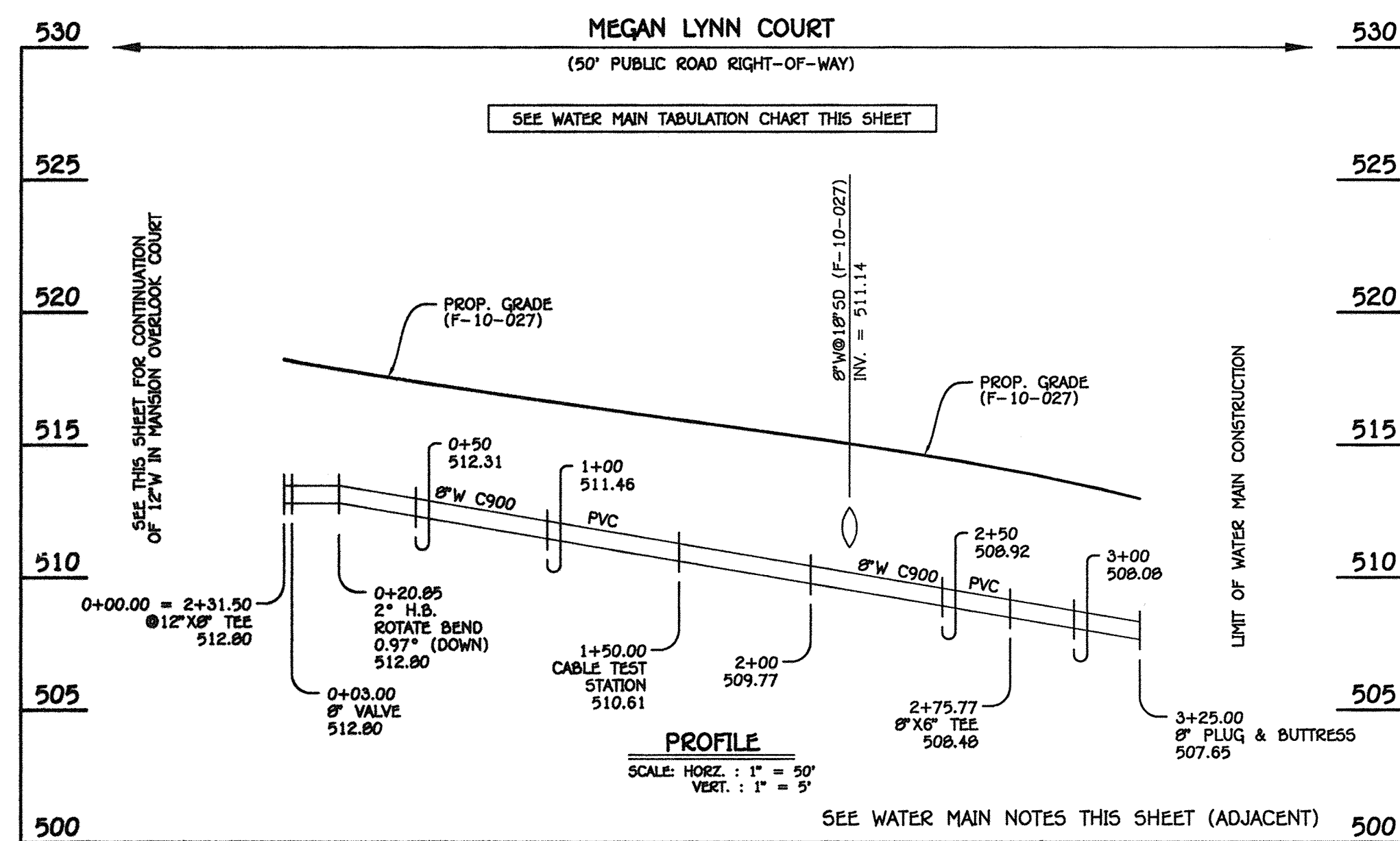


DESIGNED BY: B.C.R.
 DRAWN BY: B.C.R.
 CHECKED BY: P.W.K.
 DATE: JANUARY, 2010
 REVISIONS:
 1. AS-BUILT REVISIONS
 2. WITHIN THE APPLICABLE 8" PROFILES, WE HAVE ADDED 0.90% R/C OR 10"
 3. WITHIN THE APPLICABLE 8" PROFILES, WE HAVE DELETED "CL 50 R/P"

WATER & SEWER MAIN EXTENSIONS
 PROFILES & CHARTS
 800' SCALE MAP NO. 10 BLOCK NO. 21
 F.C.C. WORK ORDER NO. 04135
 FILE NAME: WATER & SEWER MAIN EXTENSION PLAN SHEET

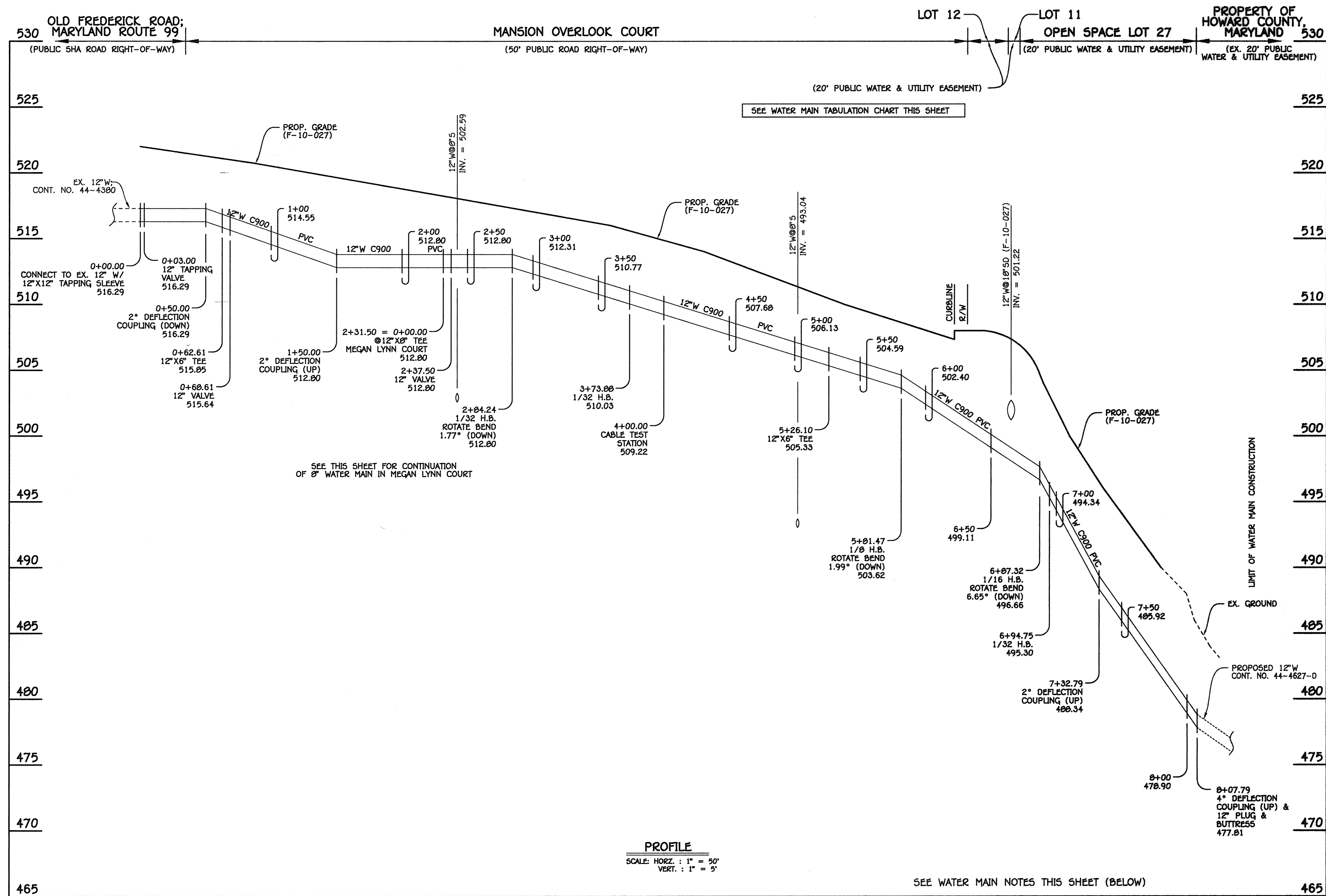
WAVERLY OVERLOOK
 LOTS 1 THRU 26 &
 OPEN SPACE LOTS 27 THRU 31
 CONTRACT NO. 24-4456-D
 THIRD ELECTION DISTRICT
 HOWARD COUNTY, MARYLAND
 SCALE AS SHOWN
 SHEET 3 OF 4

WATER MAIN TABULATION CHART			
W.M. STA.	APPURTENANCE	NORTHING	EASTING
12" WATER MAIN: MANSION OVERLOOK COURT			
0+00.00	12"X12" TAPPING SLEEVE	601543.04	1330095.78
0+03.00	12" TAPPING VALVE	601540.42	1330094.31
0+62.61	12"X6" TEE	601400.41	1330065.18
0+68.61	12" VALVE	601483.18	1330062.25
2+31.50	12"X6" TEE	601341.07	1330782.64
2+37.50	12" VALVE	601335.83	1330779.71
2+84.24	1/32" H.B.	601295.06	1330756.86
3+73.88	1/32" H.B.	601208.92	1330732.02
4+00.00	CABLE TEST STATION	601182.89	1330729.97
5+26.10	12"X6" TEE	601057.18	1330720.12
5+81.47	1/8" H.B.	601001.98	1330715.78
6+87.32	1/16" H.B.	600921.20	1330704.20
6+94.75	1/32" H.B.	600914.15	1330706.52
8+07.79	12" PLUG & BUTTRESS	600801.47	1330795.62



8" WATER MAIN: MEGAN LYNN COURT

WATER MAIN TABULATION CHART			
W.M. STA.	APPURTENANCE	NORTHING	EASTING
8" WATER MAIN: MEGAN LYNN COURT			
0+00.00	12"X6" TEE	601341.07	1330782.64
0+03.00	8" VALVE	601339.04	1330785.01
0+20.85	2" H.B.	601330.88	1330800.83
1+50.00	CABLE TEST STATION	601271.69	1330915.61
2+75.77	8"X6" TEE	601214.02	1330927.45
3+25.00	8" PLUG & BUTTRESS	601191.46	1330971.20



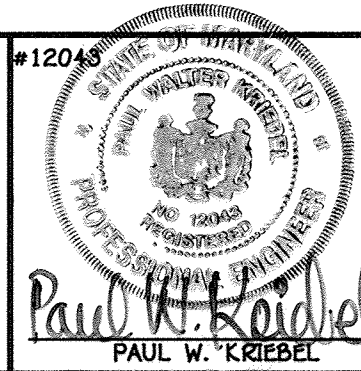
12" WATER MAIN: MANSION OVERLOOK COURT

- WATER MAIN NOTES:**
- EXCEPT FOR THE 12"X12" TAPPING SLEEVE & VALVE (WM STA. 0+00.00 TO WM STA. 0+03.00; MANSION OVERLOOK COURT), ALL WATER MAINS SHALL BE AWMA C900 PVC PIPE.
 - ALL PIPE BEDDING, TRACER WIRE, LOCATING TAPE AND OTHER APPURTENANCES SHALL BE IN ACCORDANCE WITH THE HOWARD COUNTY DESIGN MANUAL, VOLUME II - WATER AND SEWER STANDARDS FOR AWMA C900 PVC WATER PIPE INSTALLATION.
 - DEFLECTION COUPLINGS SHALL BE CERTAIN-TEED PVC HIGH DEFLECTION COUPLINGS.
 - ALL WATER HOUSE CONNECTIONS AND TAPS SHALL BE PERFORMED USING A SADDLE.

DEPARTMENT OF PUBLIC WORKS
HOWARD COUNTY, MARYLAND

DEPARTMENT OF PLANNING AND ZONING
HOWARD COUNTY, MARYLAND

FISHER, COLLINS & CARTER, INC.
CIVIL ENGINEERING CONSULTANTS & LAND SURVEYORS
CENTENNIAL SQUARE OFFICE PARK - 10272 BALTIMORE NATIONAL PIKE
ELICOTT CITY, MARYLAND 21042
(410) 461-2895



DESIGNED BY:	
B.C.R.	
DRAWN BY:	
B.C.R.	
CHECKED BY:	
P.W.K.	
DATE:	JANUARY, 2010
BY:	NO.
REVISION:	

**WATER & SEWER MAIN EXTENSIONS
PROFILES & CHARTS**

600' SCALE MAP NO. 10 BLOCK NO. 21
F.C.C. WORK ORDER NO. 04135
FILE NAME: WATER & SEWER MAIN EXTENSION PLAN SHEET

WAVERLY OVERLOOK
LOTS 1 THRU 26 &
OPEN SPACE LOTS 27 THRU 31
CONTRACT NO. 24-4456-D
THIRD ELECTION DISTRICT
HOWARD COUNTY, MARYLAND

SCALE
AS
SHOWN

SHEET
4 OF 4

CONTRACT NO. 24-4456-D
WAVERLY OVERLOOK
LOTS 1 THRU 26 &
OPEN SPACE LOTS 27 THRU 31
WATER & SEWER MAIN EXTENSIONS
HOWARD COUNTY, MARYLAND