


**GENERAL NOTES**

**PART I**

- APPROXIMATE LOCATION OF EXISTING MAINS ARE SHOWN. THE CONTRACTOR SHALL TAKE ALL NECESSARY PRECAUTIONS TO PROTECT EXISTING MAINS AND SERVICES AND MAINTAIN UNINTERRUPTED SERVICE. ANY DAMAGE INCURRED SHALL BE REPAIRED IMMEDIATELY TO THE SATISFACTION OF THE ENGINEER AT THE CONTRACTOR'S EXPENSE.
- THE PROJECT BOUNDARY AND TOPOGRAPHICAL INFORMATION SHOWN HEREON IS BASED ON A FIELD RUN TOPOGRAPHIC AND BOUNDARY SURVEY PERFORMED BY ROBERT H. VOGEL ENGINEERING, INC. DATED JANUARY, 2006.
- HORIZONTAL AND VERTICAL SURVEY CONTROLS:**  
THE COORDINATES SHOWN ON THE DRAWINGS ARE BASED ON MARYLAND STATE REFERENCE SYSTEM NAD '83/91 AS PROJECTED BY HOWARD COUNTY GEODETIC CONTROL STATIONS NO. 24FB, NO. 2413.  
ALL VERTICAL CONTROLS ARE BASED ON NAVD '88. VERTICAL CONTROL PROVIDED ON THE DRAWINGS ARE 24FB AND 2413. (ENGINEER/SURVEY FIRM SHALL PROVIDE DESCRIPTION OF VERTICAL CONTROL POINTS, I.E., IRON BARS, CROSS CUTS ON CONCRETE STRUCTURES, ETC.)
- ALL PIPE ELEVATIONS SHOWN ARE INVERT ELEVATIONS UNLESS OTHERWISE NOTED.
- CLEAR ALL UTILITIES BY A MINIMUM OF 12 INCHES. CLEAR ALL POLES BY 5'-0" MINIMUM OR TUNNEL AS REQUIRED UNLESS OTHERWISE NOTED. THE OWNER HAS CONTACTED THE UTILITY COMPANIES AND HAS MADE ARRANGEMENTS FOR BRACING OF POLES AS SHOWN ON DRAWINGS. IN THE EVENT THE CONTRACTOR'S WORK REQUIRES THE BRACING OF ADDITIONAL POLES, ANY COST INCURRED BY THE OWNER FOR BRACING OF ADDITIONAL POLES OR DAMAGES SHALL BE DEDUCTED FROM MONIES OWED THE CONTRACTOR. THE CONTRACTOR SHALL COORDINATE WITH THE UTILITY COMPANIES TO SCHEDULE THE BRACING OF THE POLES.
- FOR DETAILS NOT SHOWN ON THE DRAWINGS, AND FOR MATERIALS AND CONSTRUCTION METHODS USE HOWARD COUNTY DESIGN MANUAL, VOLUME IV, STANDARD SPECIFICATIONS AND DETAILS FOR CONSTRUCTION (LATEST EDITION). THE CONTRACTOR SHALL HAVE A COPY OF VOLUME IV ON THE JOB.
- WHERE TEST PITS HAVE BEEN MADE ON EXISTING UTILITIES, THEY ARE NOTED BY THE SYMBOL  AT THE LOCATION OF THE TEST PIT. A NOTES OR NOTES CONTAINING THE RESULTS OF THE TEST PIT OR PITS IS INCLUDED ON THE DRAWINGS. EXISTING UTILITIES IN THE VICINITY OF THE PROPOSED WORK FOR WHICH TEST PITS HAVE NOT BEEN DUG SHALL BE LOCATED BY THE CONTRACTOR TWO WEEKS IN ADVANCE OF CONSTRUCTION OPERATION AT HIS OWN EXPENSE.
- THE CONTRACTOR SHALL NOTIFY THE FOLLOWING UTILITY COMPANIES OR AGENCIES AT LEAST FIVE WORKING DAYS BEFORE STARTING WORK SHOWN THESE PLANS:  

BOE (CONSTRUCTION SERVICE)	1-800-252-1133
BOE (EMERGENCY)	410-637-8213
BUREAU OF UTILITIES	410-685-0123
COLONIAL PIPELINE CO.	410-313-4900
MISS UTILITY	410-795-1390
STATE HIGHWAY ADMINISTRATION	1-800-257-7777
VERIZON	410-531-5533
	1-800-743-0033/410-224-9210
- TREES AND SHRUBS ARE TO BE PROTECTED FROM DAMAGE TO THE MAXIMUM EXTENT. TREES AND SHRUBS LOCATED WITHIN THE CONSTRUCTION STRIP ARE NOT TO BE REMOVED OR DAMAGED BY THE CONTRACTOR.
- THE CONTRACTOR SHALL REMOVE TREES, STUMPS AND ROOTS ALONG THE LINE OF EXCAVATION. PAYMENT FOR SUCH REMOVAL SHALL BE INCLUDED IN THE UNIT PRICE BID FOR THE CONSTRUCTION OF THE MAIN.
- THE CONTRACTOR SHALL NOTIFY THE BUREAU OF HIGHWAYS, HOWARD COUNTY, AT (410) 313-7450 AT LEAST FIVE WORKING DAYS BEFORE ANY OPEN CUTTING OR BORING/JACKING OF ANY COUNTY ROAD FOR LAYING WATER/SEWER MAINS OR HOUSE CONNECTIONS. THE APPROVAL OF THESE DRAWINGS WILL CONSTITUTE COMPLIANCE WITH DPW REQUIREMENTS PER SECTION 18.114(a) OF THE HOWARD COUNTY CODE.
- PROVIDE CAST IRON ROADWAY BOXES FOR W/C BALL VALVES WITHIN THE PAVED AREAS.
- FOR OUTSIDE WATER METER SETTING, SEE HO. CO. DETAIL W 3.33.

# FOX HUNT ESTATES

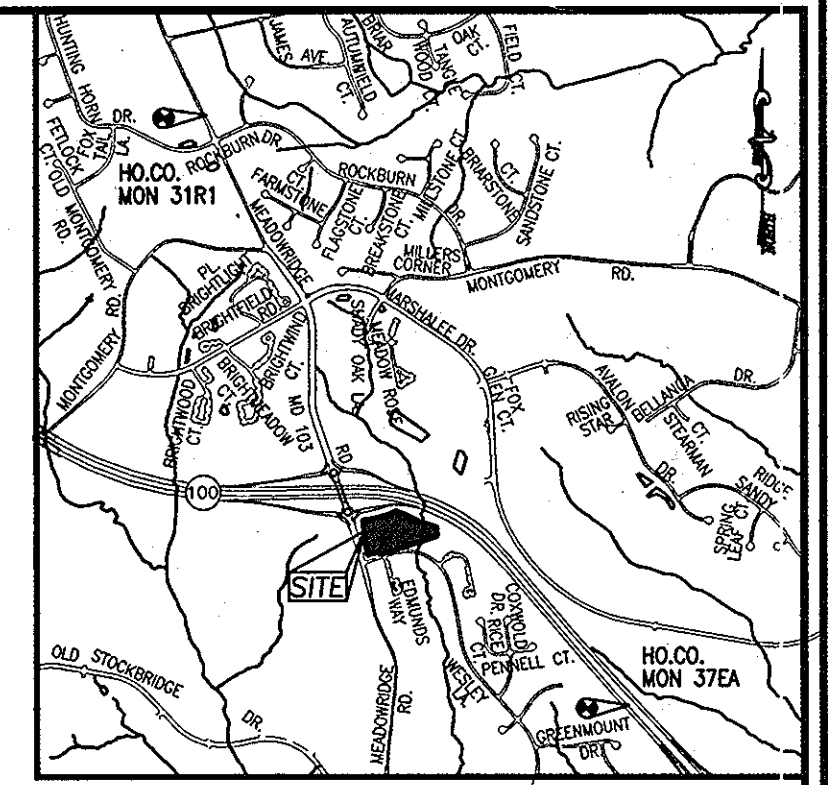
## LOTS 4-35 AND OPEN SPACE

## LOTS 36 & 37

### HOWARD COUNTY, MARYLAND

### CONTRACT NO. 44-4445-D

BENCHMARKS				
NO.	NORTHING	EASTING	ELEVATION	TYPE
37EA	559149.111	1376916.213	291.76	CONC. MONUMENT
31R1	565303.465	1372517.678	401.75	CONC. MONUMENT



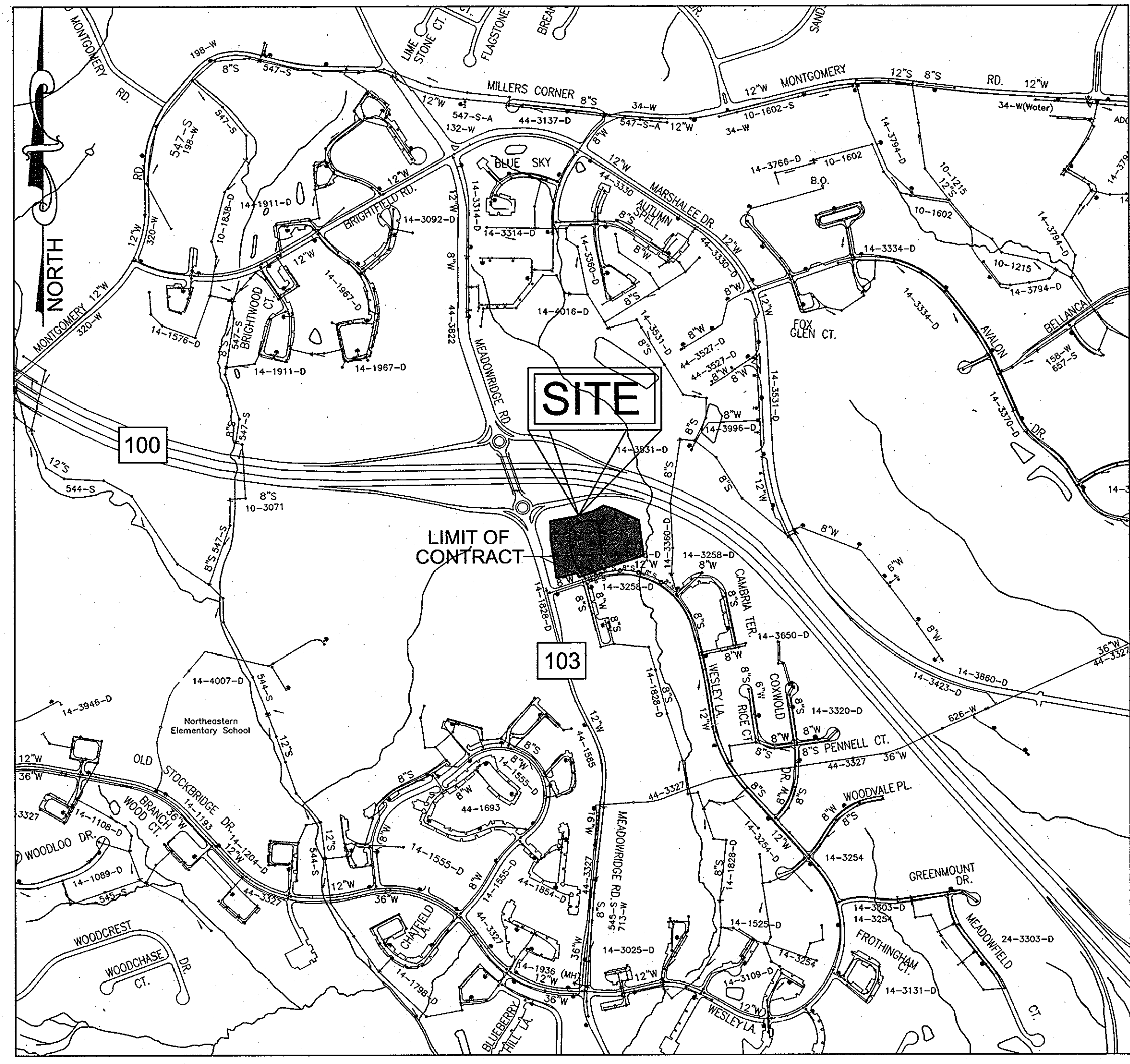
LOCATION MAP  
SCALE 1"=2000'

**PART II - WATER**

- ALL WATER MAINS TO BE D.I.P. CLASS 54 UNLESS OTHERWISE NOTED.
- TOPS OF ALL WATER MAINS TO HAVE A MINIMUM OF 3'-6" COVER UNLESS OTHERWISE NOTED.
- VALVES ADJACENT TO TEES SHALL BE STRAPPED TO TEES.
- ALL FITTINGS SHALL BE BUTTRESSED OR ANCHORED WITH CONCRETE IN ACCORDANCE WITH THE STANDARD DETAILS UNLESS OTHERWISE PROVIDED FOR ON THE DRAWINGS.
- FIRE HYDRANTS SHALL BE SET TO THE BURY LINE ELEVATIONS SHOWN ON THE DRAWINGS. ALL FIRE HYDRANTS SHALL BE INSTALLED IN ACCORDANCE WITH STANDARD DETAILS. THE SOIL AROUND THE FIRE HYDRANT SHALL BE COMPACTED IN ACCORDANCE WITH SECTION 1000 AND 1005 OF THE STANDARD SPECIFICATIONS.
- THE CONTRACTOR SHALL NOT OPERATE ANY WATER MAIN VALVES ON THE EXISTING WATER SYSTEM.

**PART III - SEWER**

- ALL SEWER MAINS SHALL BE D.I.P. OR P.V.C. UNLESS OTHERWISE NOTED.
- ALL MANHOLES SHALL BE 4'-0" INSIDE DIAMETER UNLESS OTHERWISE NOTED.
- FORCE MAINS SHALL BE D.I.P. ONLY.
- MANHOLES SHOWN WITH 12" AND 16" WALLS ARE FOR BRICK MANHOLES ONLY.
- MANHOLES DESIGNATED W.T. IN PLAN AND PROFILE SHALL HAVE WATERTIGHT FRAME AND COVER, STANDARD DETAIL G5.52. WHERE WATERTIGHT MANHOLE FRAME AND COVERS ARE USED, SET TOP OF FRAME 1'-6" ABOVE FINISHED GRADE UNLESS OTHERWISE NOTED ON THE DRAWINGS.
- HOUSE(S) WITH THE SYMBOL "C.N.S." INDICATES THAT CELLAR CANNOT BE SERVED.



VICINITY MAP  
SCALE: 1"=600'

WATER CODE: D-06  
SEWER CODE: 2610400  
WATER TEST GRADIENT: 700

TYPE OF BUILDING:	SFA UNITS
NO. OF BUILDINGS:	32
NO. OF SINGLE WHC'S	2
NO. OF TWIN WHC'S	15
NO. OF SINGLE SHC'S	19
NO. OF TWIN SHC'S	11
DRAINAGE AREA:	PATAPSCO
TREATMENT PLANT:	PATAPSCO

SEDIMENT CONTROL MEASURES WILL BE IMPLEMENTED IN ACCORDANCE WITH SECTION 219 OF THE SPECIFICATIONS AND WITH FINAL ROAD CONSTRUCTION PLAN SOP-07-007.

THIS DEVELOPMENT IS APPROVED FOR SOIL EROSION AND SEDIMENT CONTROL BY THE HOWARD COUNTY SOIL CONSERVATION DISTRICT.

*John R. Robertson* 2/14/08  
HOWARD COUNTY SOIL CONSERVATION DISTRICT DATE

REVIEWED FOR HOWARD COUNTY SOIL CONSERVATION DISTRICT AND MEETS TECHNICAL REQUIREMENTS.

*[Signature]*  
U.S. SOIL CONSERVATION DISTRICT DATE

APPROVED: HOWARD COUNTY DEPARTMENT OF PLANNING & ZONING

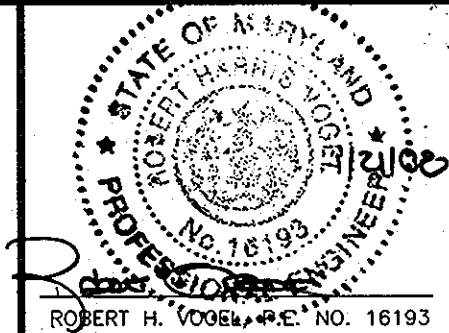
*[Signature]* 2/15/08  
CHIEF, DEVELOPMENT ENGINEERING DIVISION DATE

APPROVED: HOWARD COUNTY DEPARTMENT OF PUBLIC WORKS

*[Signature]* 2/12/08  
CHIEF, BUREAU OF UTILITIES DATE

DEVELOPER  
LAND DESIGN AND DEVELOPMENT  
5300 DORSEY HALL DR. STE. 102  
ELLICOTT CITY, MARYLAND 21042-7819  
ATTN: MR. DONALD R. REUWER

**ROBERT H. VOGEL ENGINEERING, INC.**  
ENGINEERS • SURVEYORS • PLANNERS  
8407 MAIN STREET TEL: 410.461.7666  
ELLICOTT CITY, MD 21043 FAX: 410.461.8961



DESIGN BY: RJ			
DRAWN BY: RJ	JMR 2	MODIFY WATER MAIN PROFILE	8-6-13
CHECKED BY: RHV	JMR 1	CREATE LOTS FOR LOTS 4-35, MAKE ALL WATER AND SEWER PUBLIC, REVISE WATER AND SEWER LAYOUT AND PROFILES, REVISE WHC'S AND SHC'S	5-14-12
DATE: JANUARY 2008	BY NO	REVISION	DATE

**FINAL WATER & SEWER CONSTRUCTION PLAN**

600' SCALE MAP NO. 37 BLOCK NO. 3

**FOX HUNT ESTATES**  
LOTS 4-35 AND OPEN SPACE LOTS 36 & 37

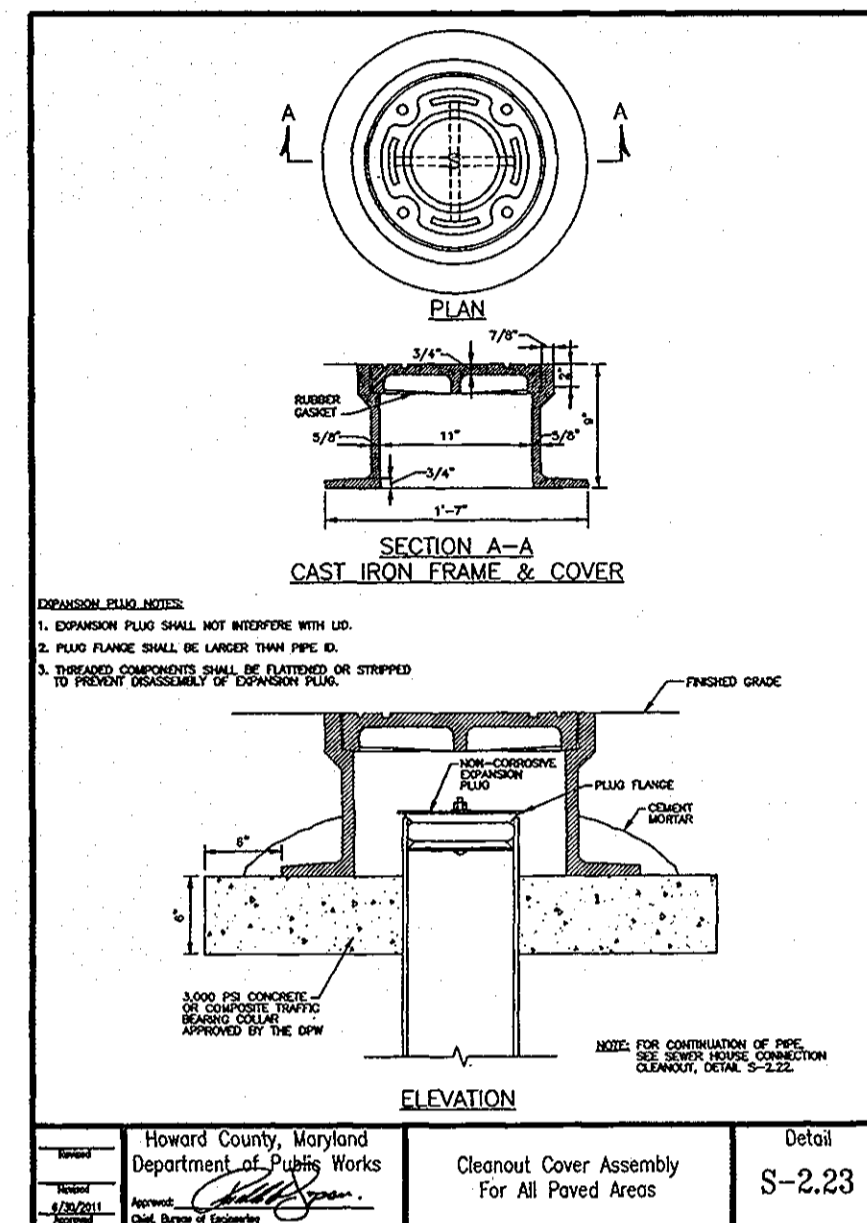
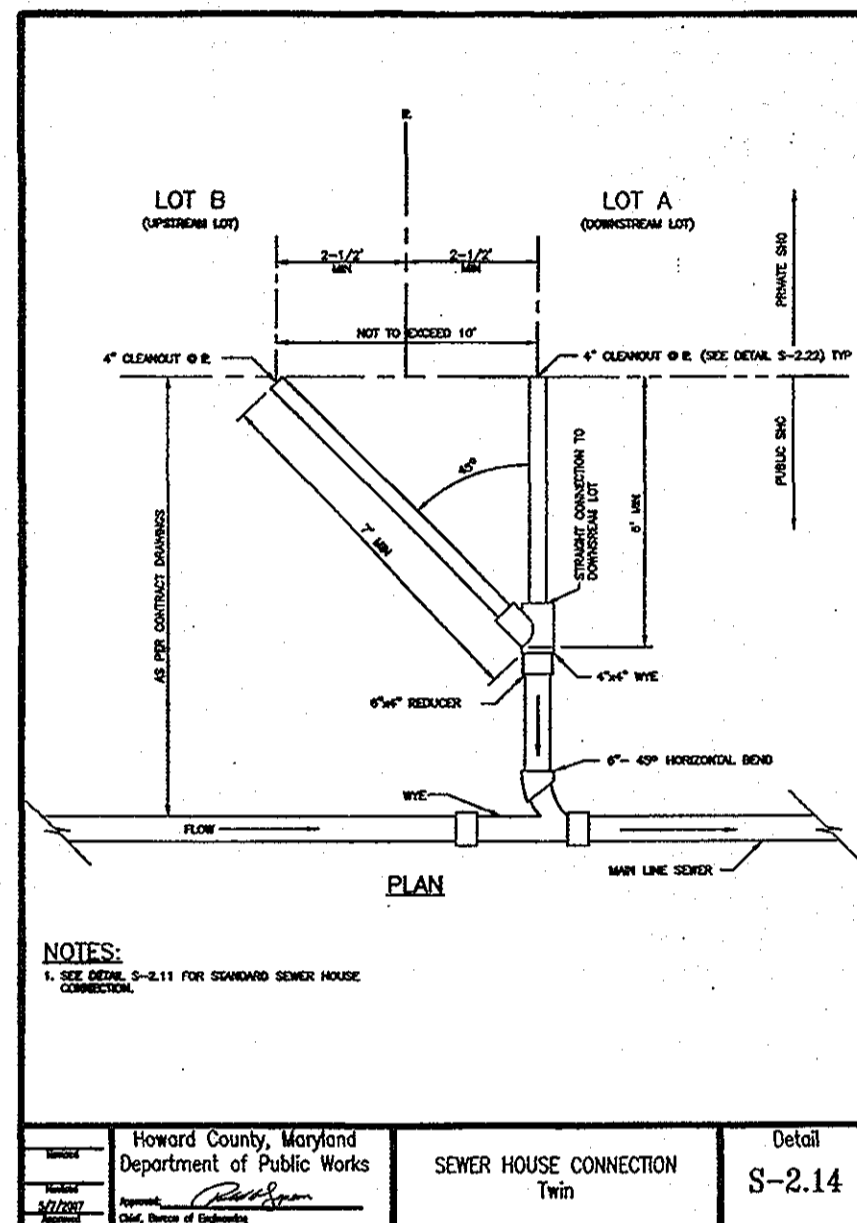
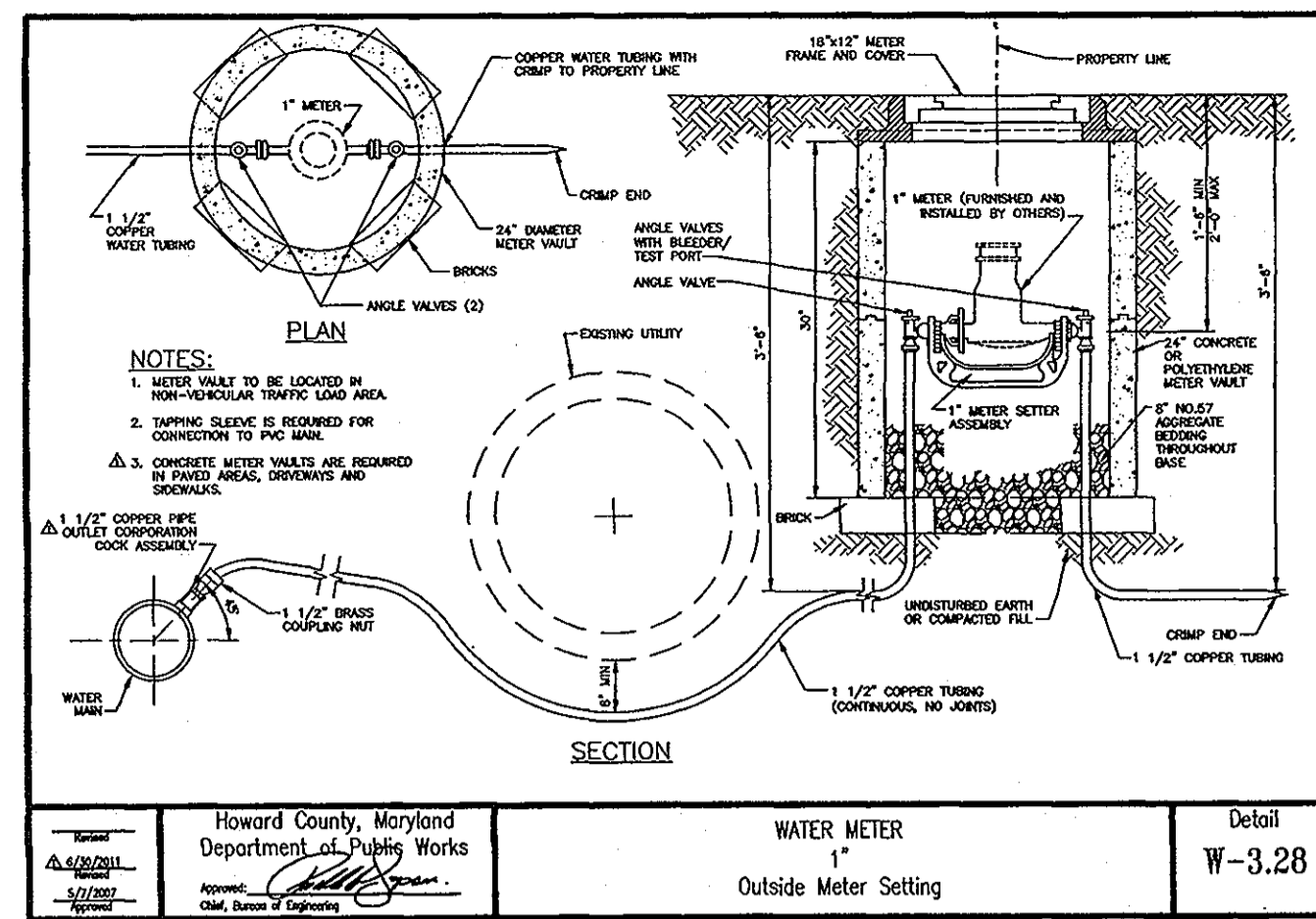
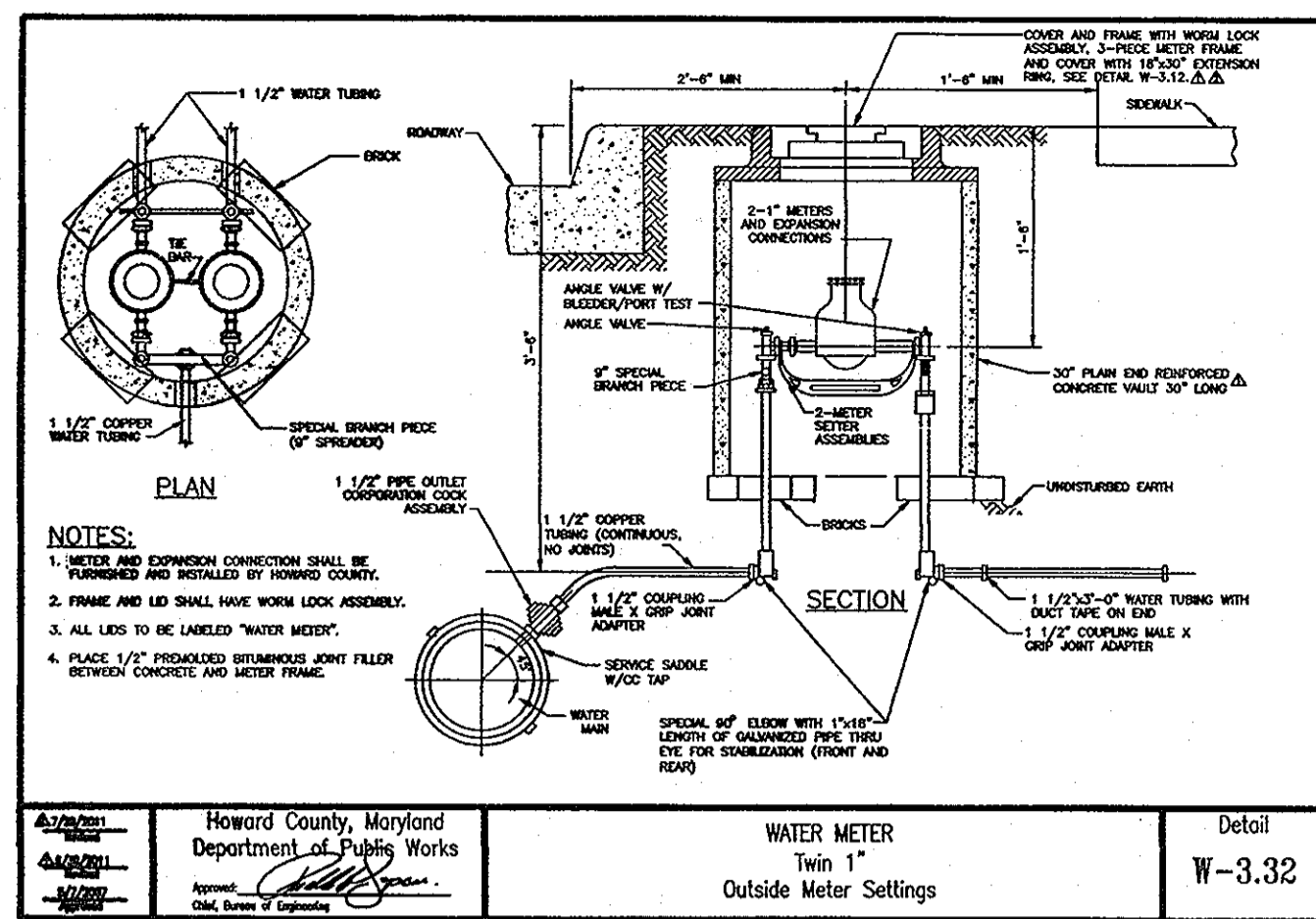
**CONTRACT NO. 44-4445-D**

TAX MAP 37 GRID 3 1ST ELECTION DISTRICT  
PARCEL '806' HOWARD COUNTY, MARYLAND

SCALE AS SHOWN  
SHEET 1 OF 4

QUANTITIES				
NAME OF UTILITY CONTRACTOR:				
SURVEY AND DRAFTING DIVISION AS-BUILT DATE:				
ITEMS	QUANTITIES ESTIMATED	AS-BUILT		
		QUANTITIES	TYPE	MANUFACTURER/SUPPLIER
8" W (DIP) CLASS 54	658 LF			
6" W (DIP) CLASS 54	117 LF			
8" X 6" TEE	3 EACH			
FIREHYDRANT	3 EACH			
8" VALVE	2 EACH			
6" CAP & BUTTRESS	1 EACH			
8" X 6" REDUCER	1 EACH			
1/32 HB	2 EACH			
1/16 HB	6 EACH			
8" SEWER MAIN	1274 LF			
SEWER MANHOLES	14 EACH			
1/8 HB	2 EACH			
1-1/2" WHC	294 LF			
4" SHC	539 LF			
6" VALVE	3 EACH			

UNITS WHC METER SETTING			
LOT 4	DOUBLE 1" METER SETTING	LOT 20	DOUBLE 1" METER SETTING
LOT 5	DOUBLE 1" METER SETTING	LOT 21	DOUBLE 1" METER SETTING
LOT 6	DOUBLE 1" METER SETTING	LOT 22	DOUBLE 1" METER SETTING
LOT 7	DOUBLE 1" METER SETTING	LOT 23	DOUBLE 1" METER SETTING
LOT 8	DOUBLE 1" METER SETTING	LOT 24	DOUBLE 1" METER SETTING
LOT 9	DOUBLE 1" METER SETTING	LOT 25	DOUBLE 1" METER SETTING
LOT 10	DOUBLE 1" METER SETTING	LOT 26	SINGLE 1" METER SETTING
LOT 11	DOUBLE 1" METER SETTING	LOT 27	DOUBLE 1" METER SETTING
LOT 12	DOUBLE 1" METER SETTING	LOT 28	DOUBLE 1" METER SETTING
LOT 13	DOUBLE 1" METER SETTING	LOT 29	SINGLE 1" METER SETTING
LOT 14	DOUBLE 1" METER SETTING	LOT 30	DOUBLE 1" METER SETTING
LOT 15	DOUBLE 1" METER SETTING	LOT 31	DOUBLE 1" METER SETTING
LOT 16	DOUBLE 1" METER SETTING	LOT 32	DOUBLE 1" METER SETTING
LOT 17	DOUBLE 1" METER SETTING	LOT 33	DOUBLE 1" METER SETTING
LOT 18	DOUBLE 1" METER SETTING	LOT 34	DOUBLE 1" METER SETTING
LOT 19	DOUBLE 1" METER SETTING	LOT 35	DOUBLE 1" METER SETTING



SEDIMENT CONTROL MEASURES WILL BE IMPLEMENTED IN ACCORDANCE WITH SECTION 219 OF THE SPECIFICATIONS AND WITH FINAL ROAD CONSTRUCTION PLAN SDP-07-007.

THIS DEVELOPMENT IS APPROVED FOR SOIL EROSION AND SEDIMENT CONTROL BY THE HOWARD COUNTY SOIL CONSERVATION DISTRICT.

HOWARD COUNTY SOIL CONSERVATION DISTRICT DATE

REVIEWED FOR HOWARD COUNTY SOIL CONSERVATION DISTRICT AND MEETS TECHNICAL REQUIREMENTS.

U.S. SOIL CONSERVATION DISTRICT DATE

APPROVED: HOWARD COUNTY DEPARTMENT OF PLANNING & ZONING

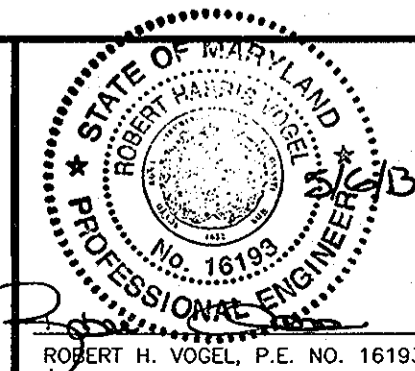
*Chad Chason* 5-21-13  
CHIEF, DEVELOPMENT ENGINEERING DIVISION DATE

APPROVED: HOWARD COUNTY DEPARTMENT OF PUBLIC WORKS

*Steve Chen* 5/16/13  
CHIEF, BUREAU OF UTILITIES DATE

**DEVELOPER**  
100% LAND, INC.  
5300 DORSEY HALL DR STE 102  
ELLCOTT CITY MD 21042-7819  
ATTN: MR. DONALD R. REUWER  
(443) 367-0422

**ROBERT H. VOGEL ENGINEERING, INC.**  
ENGINEERS • SURVEYORS • PLANNERS  
8407 MAIN STREET TEL: 410.461.7666  
ELLCOTT CITY, MD 21043 FAX: 410.461.8961



DESIGN BY: RJ				
DRAWN BY: RJ	JMR	2	MODIFY WATER MAIN PROFILE	8-6-13
CHECKED BY: RHV	JMR	1	CREATE LOTS FOR UNITS 4-35. MAKE ALL WATER AND SEWER PUBLIC. REVISE WATER AND SEWER LAYOUT AND PROFILES. REVISE WHO'S AND SHC'S.	5-14-12
DATE: JANUARY 2008	BY	NO	REVISION	DATE

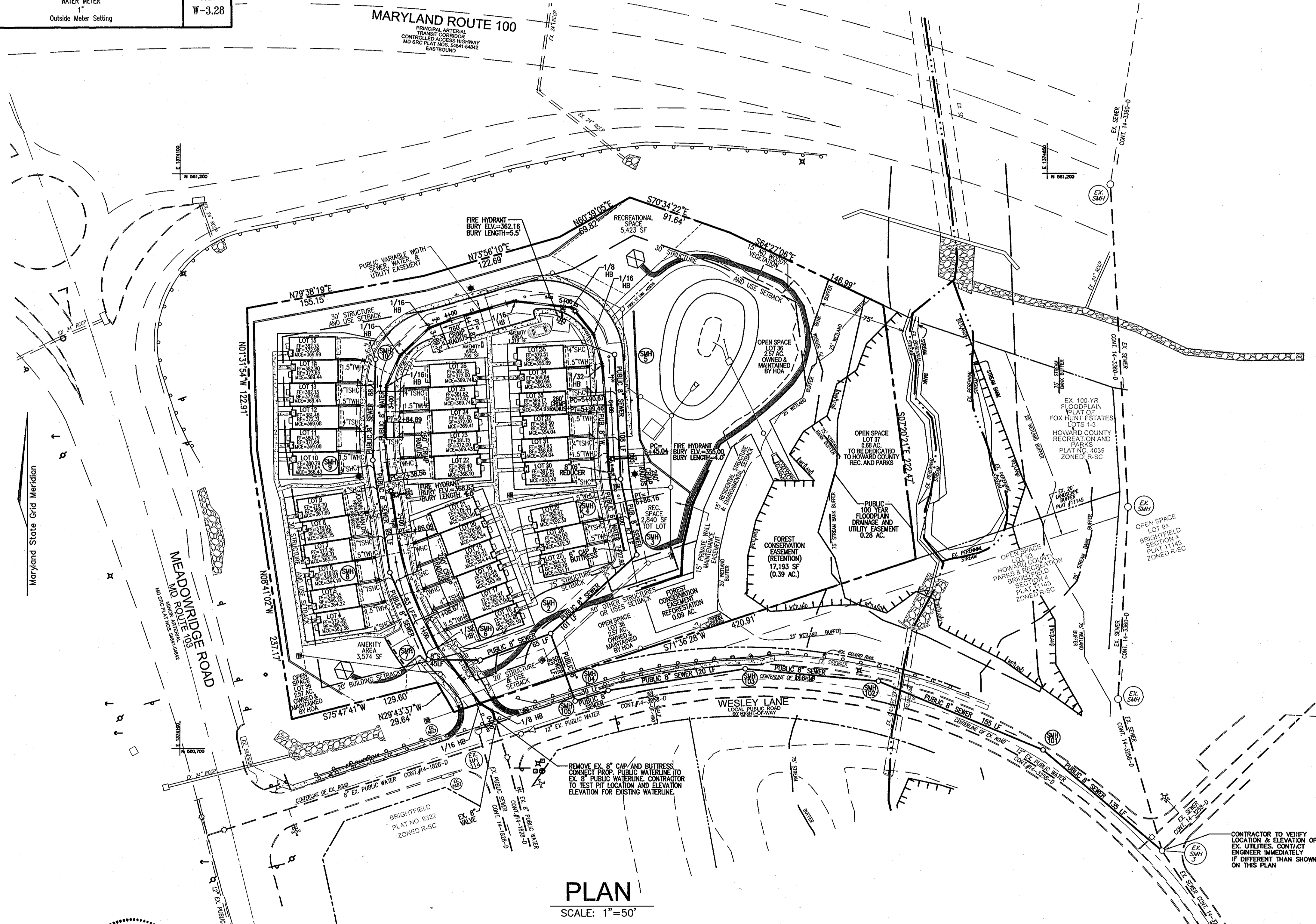
**FINAL WATER & SEWER CONSTRUCTION PLAN**

**FOX HUNT ESTATES**  
LOTS 4-35 AND OPEN SPACE LOTS 36 & 37  
CONTRACT NO. 44-4445-D

SCALE AS SHOWN

SHEET

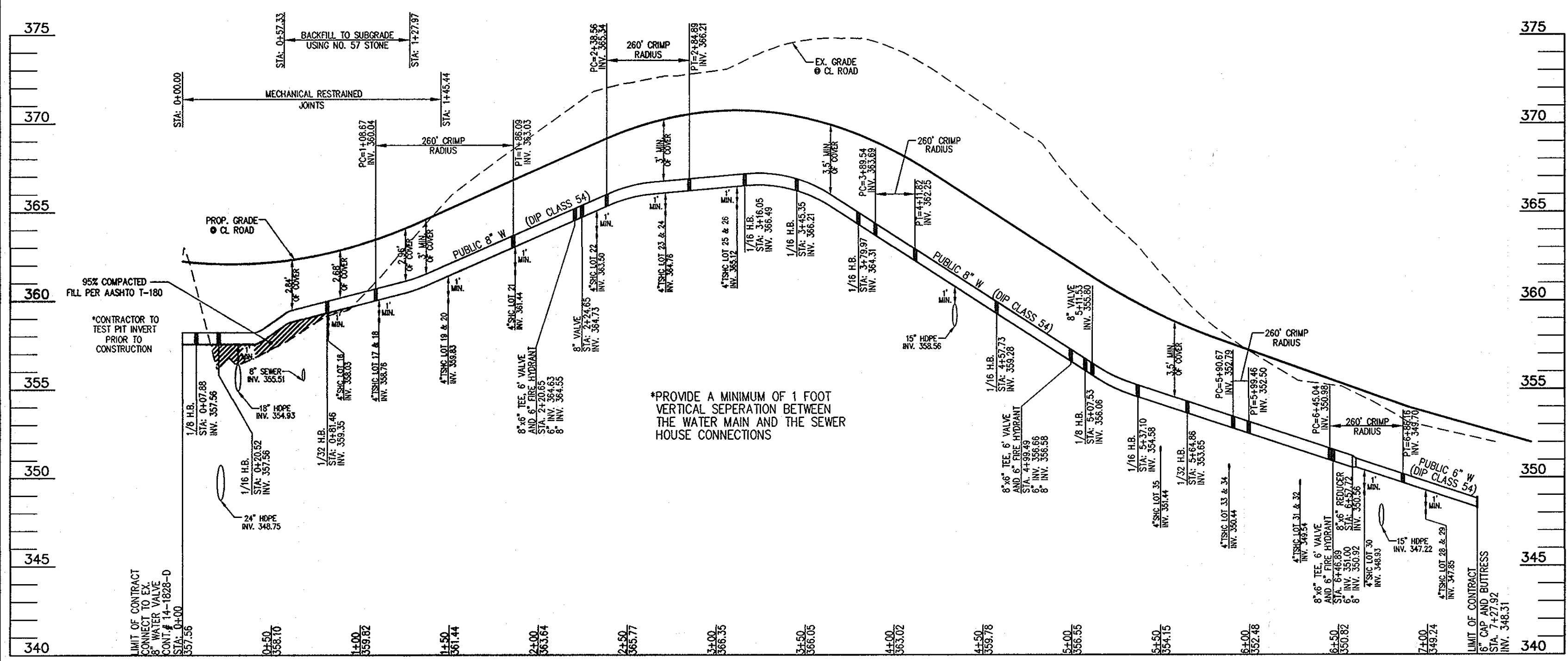
2 OF 4



1. ALL WATER HOUSE CONNECTIONS ARE 1-1/2" WITH 1" OUTSIDE METER SETTING.
2. PROVIDE CAST IRON ROADWAY BOXES FOR WHC BALL VALVES WITHIN THE PAVED AREAS.
3. THE STANDARD DETAIL FOR THE 1" SINGLE OUTSIDE METER SETTING IS W-3.28; THE DETAIL FOR THE TWIN 1" OUTSIDE METER SETTING IS W-3.32.

TAX MAP 37 GRID 3  
1ST ELECTION DISTRICT

PARCEL '606'  
HOWARD COUNTY, MARYLAND



**WATER PROFILE**  
SCALE: 1"=50'HORIZ.  
1"=5' VERT.

CRIMP	LENGTH	RADIUS	PC STA.	PT STA.
1	77.42'	260'	1+08.67	1+86.09
2	46.33'	260'	2+38.56	2+84.89
3	22.28'	260'	3+89.54	4+11.82
4	8.79'	260'	5+90.67	5+99.46
5	41.12'	260'	6+45.04	6+86.16

WL STA.	APPURTENANCE
JOANN KHAN DRIVE	
WL STA. 0+00	CONNECT TO EX. 8" VALVE
WL STA. 0+07.88	1/8 HB
WL STA. 0+20.52	1/16 HB
WL STA. 0+81.46	1/32 HB
WL STA. 1+08.67	PC 260' CRIMP RADIUS
WL STA. 1+86.09	PT 260' CRIMP RADIUS
WL STA. 2+20.65	8"x6" TEE, 6" VALVE, AND FIRE HYDRANT
WL STA. 2+24.65	8" VALVE
WL STA. 2+38.56	PC 260' CRIMP RADIUS
WL STA. 2+84.89	PT 260' CRIMP RADIUS
WL STA. 3+16.05	1/16 HB
WL STA. 3+45.35	1/16 HB
WL STA. 3+79.97	1/16 HB
WL STA. 3+89.54	PC 260' CRIMP RADIUS
WL STA. 4+11.82	PT 260' CRIMP RADIUS
WL STA. 4+57.73	1/16 HB
WL STA. 4+99.49	8"x6" TEE, 6" VALVE, AND FIRE HYDRANT
WL STA. 5+07.53	1/8 HB
WL STA. 5+11.53	8" VALVE
WL STA. 5+37.10	1/16 HB
WL STA. 5+64.86	1/32 HB
WL STA. 5+90.67	PC 260' CRIMP RADIUS
WL STA. 5+99.46	PT 260' CRIMP RADIUS
WL STA. 6+45.04	PC 260' CRIMP RADIUS
WL STA. 6+46.89	8"x6" TEE, 6" VALVE, AND FIRE HYDRANT
WL STA. 6+57.72	8"x6" REDUCER
WL STA. 6+86.16	PT 260' CRIMP RADIUS
WL STA. 7+27.92	6" CAP & BUTTRESS

SEDIMENT CONTROL MEASURES WILL BE IMPLEMENTED IN ACCORDANCE WITH SECTION 219 OF THE SPECIFICATIONS AND WITH FINAL ROAD CONSTRUCTION PLAN SDP-07-007.

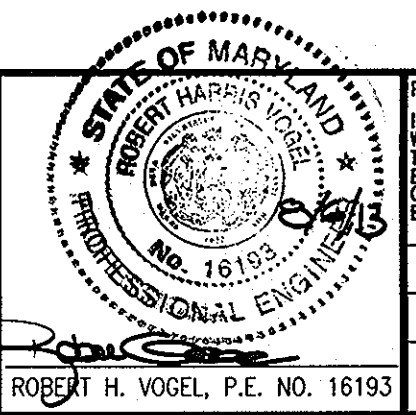
THIS DEVELOPMENT IS APPROVED FOR SOIL EROSION AND SEDIMENT CONTROL BY THE HOWARD COUNTY SOIL CONSERVATION DISTRICT.

HOWARD COUNTY SOIL CONSERVATION DISTRICT DATE  
APPROVED: HOWARD COUNTY DEPARTMENT OF PLANNING & ZONING

CHIEF, DEVELOPMENT ENGINEERING DIVISION M.G. DATE  
APPROVED: HOWARD COUNTY DEPARTMENT OF PUBLIC WORKS

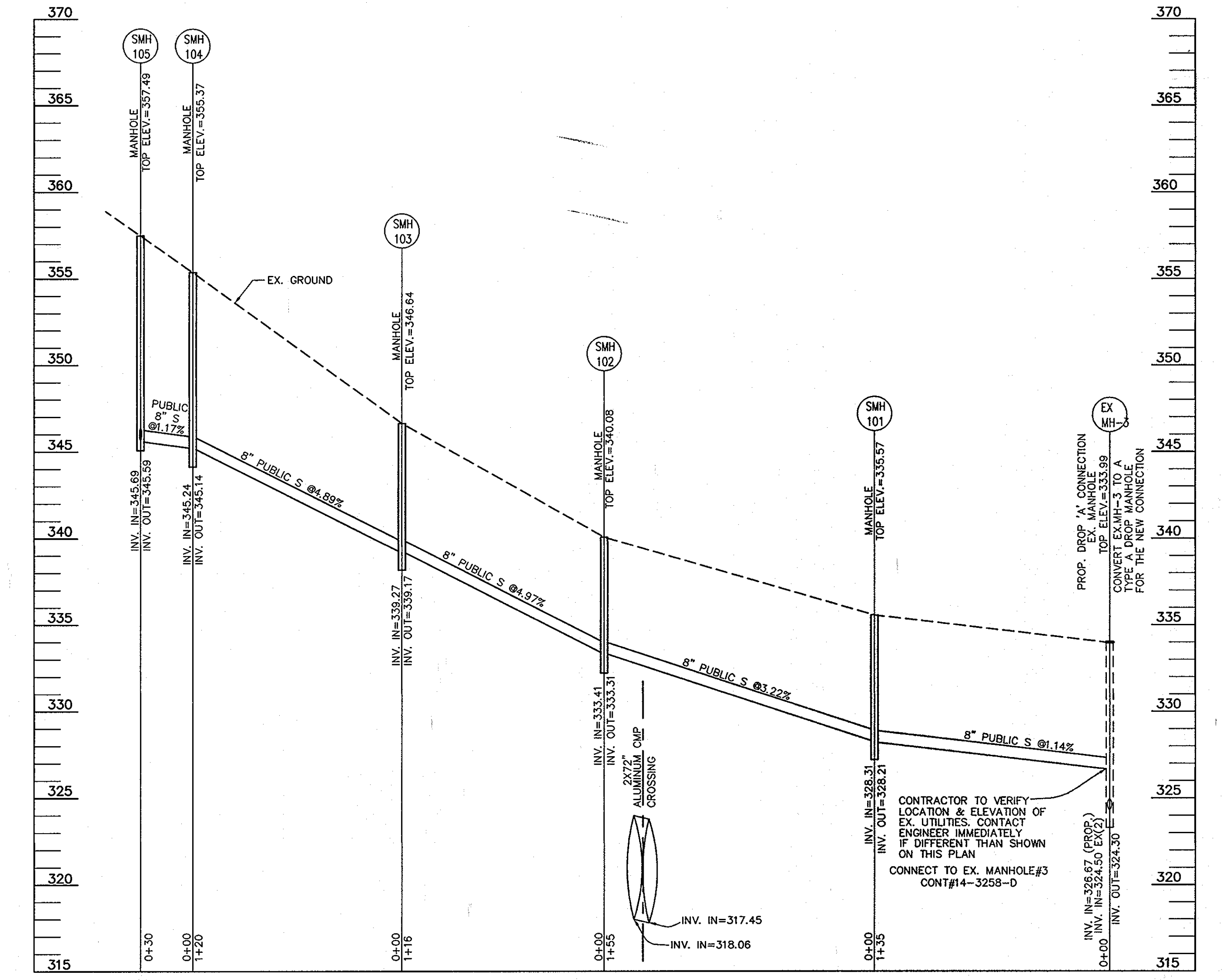
DATE 8/6/2013  
DATE

**ROBERT H. VOGEL ENGINEERING, INC.**  
ENGINEERS • SURVEYORS • PLANNERS  
8407 MAIN STREET ELLICOTT CITY, MD 21043 TEL: 410.461.7666 FAX: 410.461.8961



NO.	REVISION	DATE
1	REVISE PUBLIC WATER PROFILE.	7-30-13
2	CREATE LOTS FOR UNITS 4-35. MAKE ALL WATER AND SEWER PUBLIC. REVISE WATER AND SEWER LAYOUT AND PROFILES.	5-14-12
3	REVISE WHC'S AND SHC'S.	

SEWER MANHOLE SCHEDULE					
NO.	TYPE	CONT.#	TOP ELEV.	INV. IN.	INV. OUT
EX. MH3	STD. PRECAST MH HO. CO. STD. DET. G5.12	CONT.# 14-3258-D	333.99	8" Ex.(2)324.50 8" PRP.(1)326.67	324.30
SMH 101	STD. PRECAST MH HO. CO. STD. DET. G5.12	N 560698.67 E 1374846.84	335.57	328.31	328.21
SMH 102	STD. PRECAST MH HO. CO. STD. DET. G5.12	N 560758.56 E 1374704.40	340.08	333.41	333.31
SMH 103	STD. PRECAST MH HO. CO. STD. DET. G5.12	N 560769.37 E 1374589.19	346.64	339.27	339.17
SMH 104	STD. PRECAST MH HO. CO. STD. DET. G5.12	N 560750.55 E 1374470.68	355.37	345.24	345.14
SMH 105	STD. PRECAST MH HO. CO. STD. DET. G5.12	N 560741.29 E 1374442.09	357.49	345.69	345.59



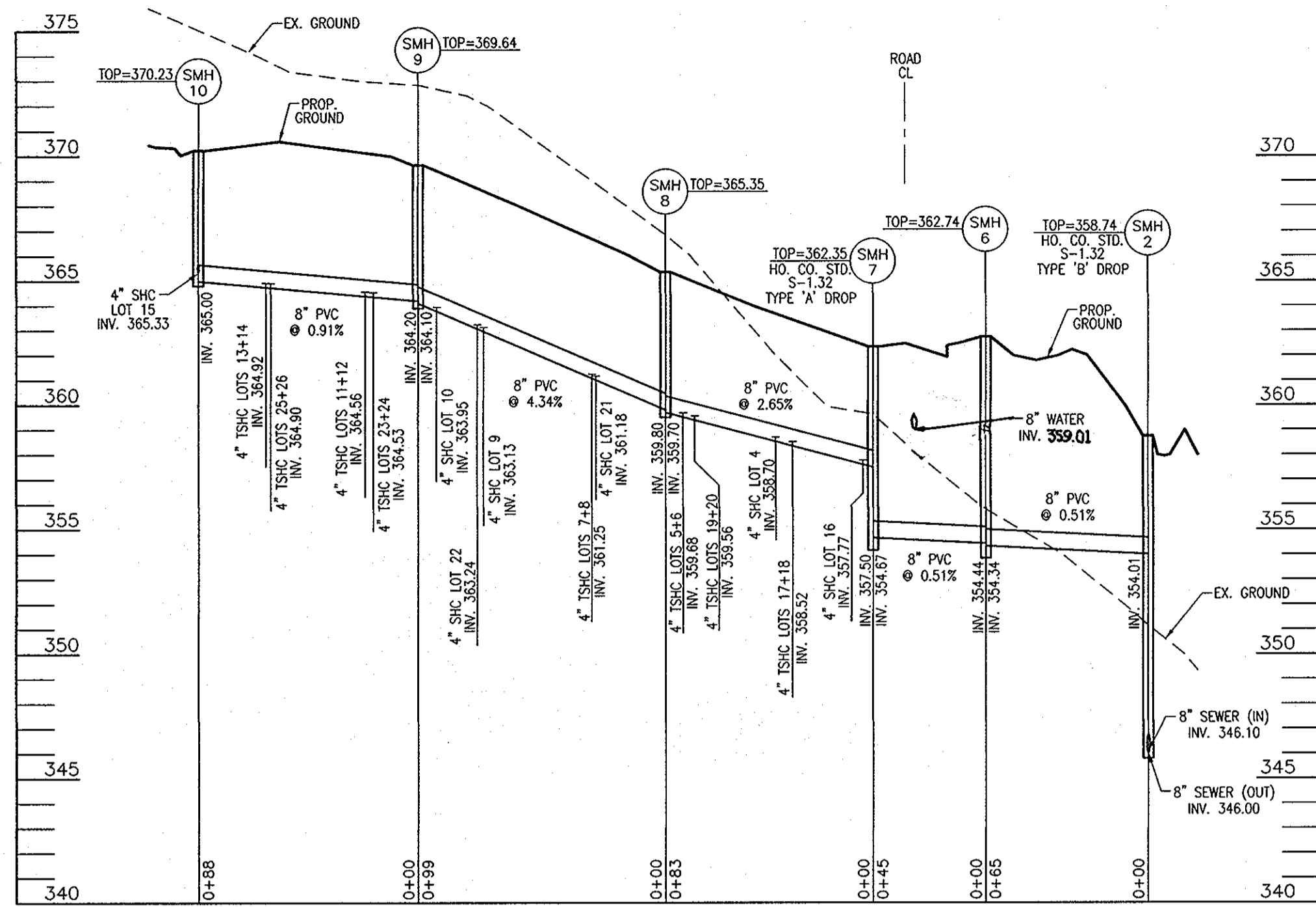
**SEWER PROFILE**  
SCALE: 1"=50'HORIZ.  
1"=5' VERT.

DEVELOPER  
LAND DESIGN AND DEVELOPMENT  
5300 DORSET HALL DR. STE. 102  
ELLICOTT CITY MD 21042-7819  
ATTN: MR. DONALD R. REUWER  
(443) 367-0422

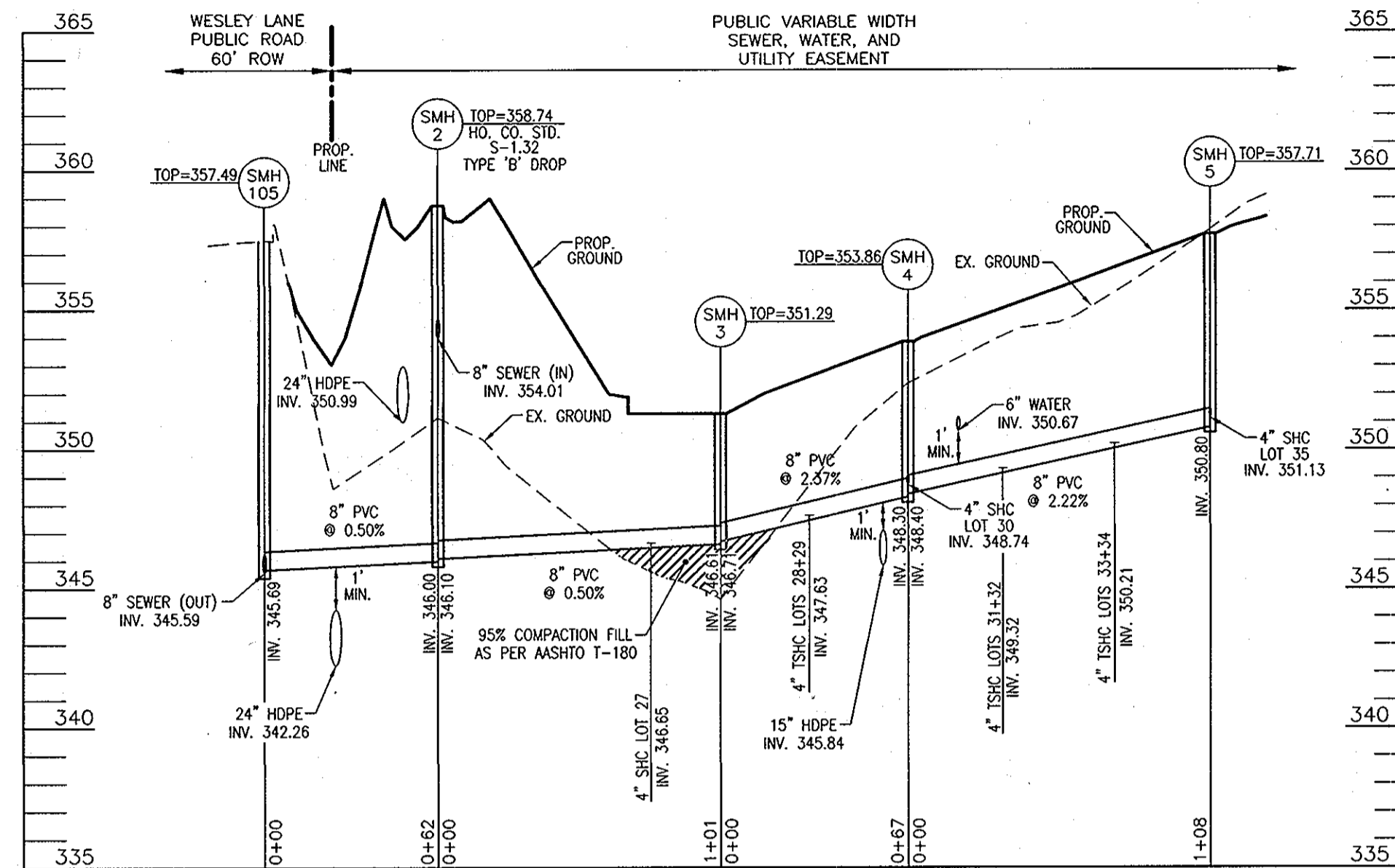
**FINAL WATER & SEWER CONSTRUCTION PLAN**

**FOX HUNT ESTATES LOTS 4-35 AND OPEN SPACE LOTS 36 & 37 CONTRACT NO. 44-4445-D**

TAX MAP 37 GRID 3 1ST ELECTION DISTRICT  
600' SCALE MAP NO. 37 BLOCK NO. 3  
PARCEL '606' HOWARD COUNTY, MARYLAND  
SCALE AS SHOWN  
SHEET 3 OF 4



SEWER PROFILE  
SCALE: 1"=50' HORIZ.  
1"=5' VERT.



SEWER PROFILE  
SCALE: 1"=50' HORIZ.  
1"=5' VERT.

SEWER CONNECTION TABULATION							
LOT#	EL. @ MAIN	TYPE	DIST. TO ESMNT.	EL. @ ESMNT.	DIST. ESMNT. TO HSE	EL. @ HSE	MCE
4	358.70	SHC	18'	359.06	66'	360.38	363.38
5	359.68	TSHC	16'	360.00	61'	361.22	364.22
6	359.68	TSHC	17'	360.02	58'	361.18	364.18
7	361.25	TSHC	15'	361.55	60'	362.75	365.75
8	361.25	TSHC	17'	361.59	58'	362.75	365.75
9	363.13	SHC	15'	363.43	61'	364.65	367.65
10	363.95	SHC	15'	364.25	59'	365.43	368.43
11	364.56	TSHC	16'	364.88	60'	366.08	369.08
12	364.56	TSHC	18'	364.92	58'	366.08	369.08
13	364.92	TSHC	16'	365.24	60'	366.44	369.44
14	364.92	TSHC	18'	365.28	58'	366.44	369.44
15	365.33	SHC	15'	365.63	68'	366.99	369.99
16	357.77	SHC	30'	358.37	61'	359.59	362.59
17	358.52	TSHC	25'	359.02	67'	360.36	363.36
18	358.52	TSHC	27'	359.06	70'	360.46	363.46
19	359.56	TSHC	27'	360.10	67'	361.44	364.44
20	359.56	TSHC	31'	360.18	68'	361.54	364.54
21	361.18	SHC	28'	361.74	58'	362.90	365.90
22	363.24	SHC	28'	363.80	65'	365.10	368.10
23	364.53	TSHC	26'	365.05	69'	366.43	369.43
24	364.53	TSHC	28'	365.09	66'	366.41	369.41
25	364.90	TSHC	26'	365.42	66'	366.74	369.74
26	364.90	TSHC	29'	365.48	63'	366.74	369.74
27	346.65	SHC	13'	346.91	60'	348.11	351.11
28	347.63	TSHC	26'	348.15	58'	349.31	352.31
29	347.63	TSHC	28'	348.19	60'	349.39	352.39
30	348.74	SHC	25'	349.24	58'	350.40	353.40
31	349.32	TSHC	26'	349.84	60'	351.04	354.04
32	349.32	TSHC	28'	349.88	58'	351.04	354.04
33	350.21	TSHC	28'	350.73	60'	351.93	354.93
34	350.21	TSHC	28'	350.77	58'	351.93	354.93
35	351.13	SHC	30'	351.73	58'	352.89	355.89

SEWER MANHOLE SCHEDULE							
NO.	TYPE	LOCATION	TOP ELEV.	INV. IN.	INV. OUT		
SMH 2	TYPE 'B' DROP MH HO. CO. STD. DET. S-1.32	N 560800.02 E 1374420.78	358.74	354.01	346.00		
SMH 3	STD. PRECAST MH HO. CO. STD. DET. G-5.12	N 560868.35 E 1374495.26	351.29	346.10	346.61		
SMH 4	STD. PRECAST MH HO. CO. STD. DET. G-5.12	N 560934.27 E 1374481.32	353.86	348.74	348.30		
SMH 5	STD. PRECAST MH HO. CO. STD. DET. G-5.12	N 561042.60 E 1374475.87	357.71	351.13	350.80		
SMH 6	STD. PRECAST MH HO. CO. STD. DET. G-5.12	N 560776.96 E 1374360.01	362.74	354.44	354.34		
SMH 7	STD. PRECAST MH HO. CO. STD. DET. S-1.32	N 560777.24 E 1374314.96	362.35	357.50	354.67		
SMH 8	STD. PRECAST MH HO. CO. STD. DET. G-5.12	N 560853.10 E 1374281.70	365.35	359.80	359.70		
SMH 9	STD. PRECAST MH HO. CO. STD. DET. G-5.12	N 560950.88 E 1374266.77	369.64	364.20	364.10		
SMH 10	STD. PRECAST MH HO. CO. STD. DET. G-5.12	N 561038.54 E 1374269.11	370.23	365.33	365.00		

SEDIMENT CONTROL MEASURES WILL BE IMPLEMENTED IN ACCORDANCE WITH SECTION 219 OF THE SPECIFICATIONS AND WITH FINAL ROAD CONSTRUCTION PLAN SDP-07-007.

THIS DEVELOPMENT IS APPROVED FOR SOIL EROSION AND SEDIMENT CONTROL BY THE HOWARD COUNTY SOIL CONSERVATION DISTRICT.

HOWARD COUNTY SOIL CONSERVATION DISTRICT DATE

REVIEWED FOR HOWARD COUNTY SOIL CONSERVATION DISTRICT AND MEETS TECHNICAL REQUIREMENTS.

U.S. SOIL CONSERVATION DISTRICT DATE

APPROVED: HOWARD COUNTY DEPARTMENT OF PLANNING & ZONING

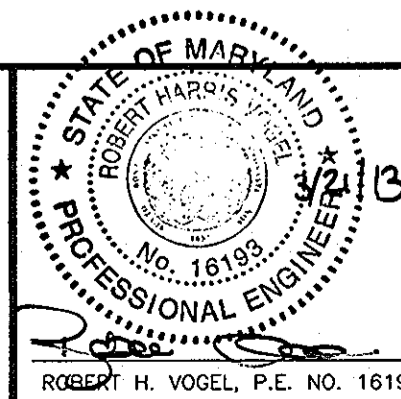
CHIEF, DEVELOPMENT ENGINEERING DIVISION DATE: 5/21/13

APPROVED: HOWARD COUNTY DEPARTMENT OF PUBLIC WORKS

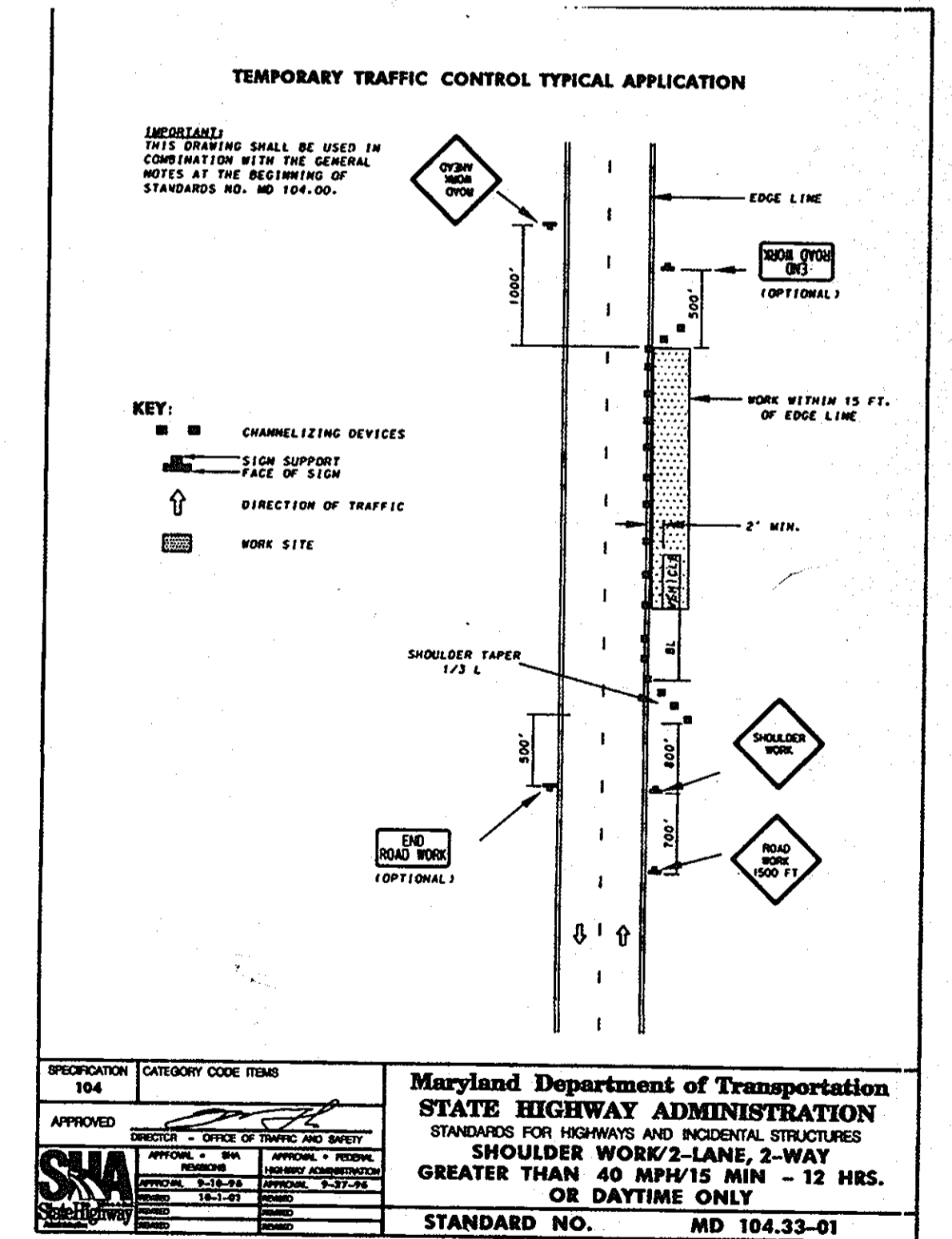
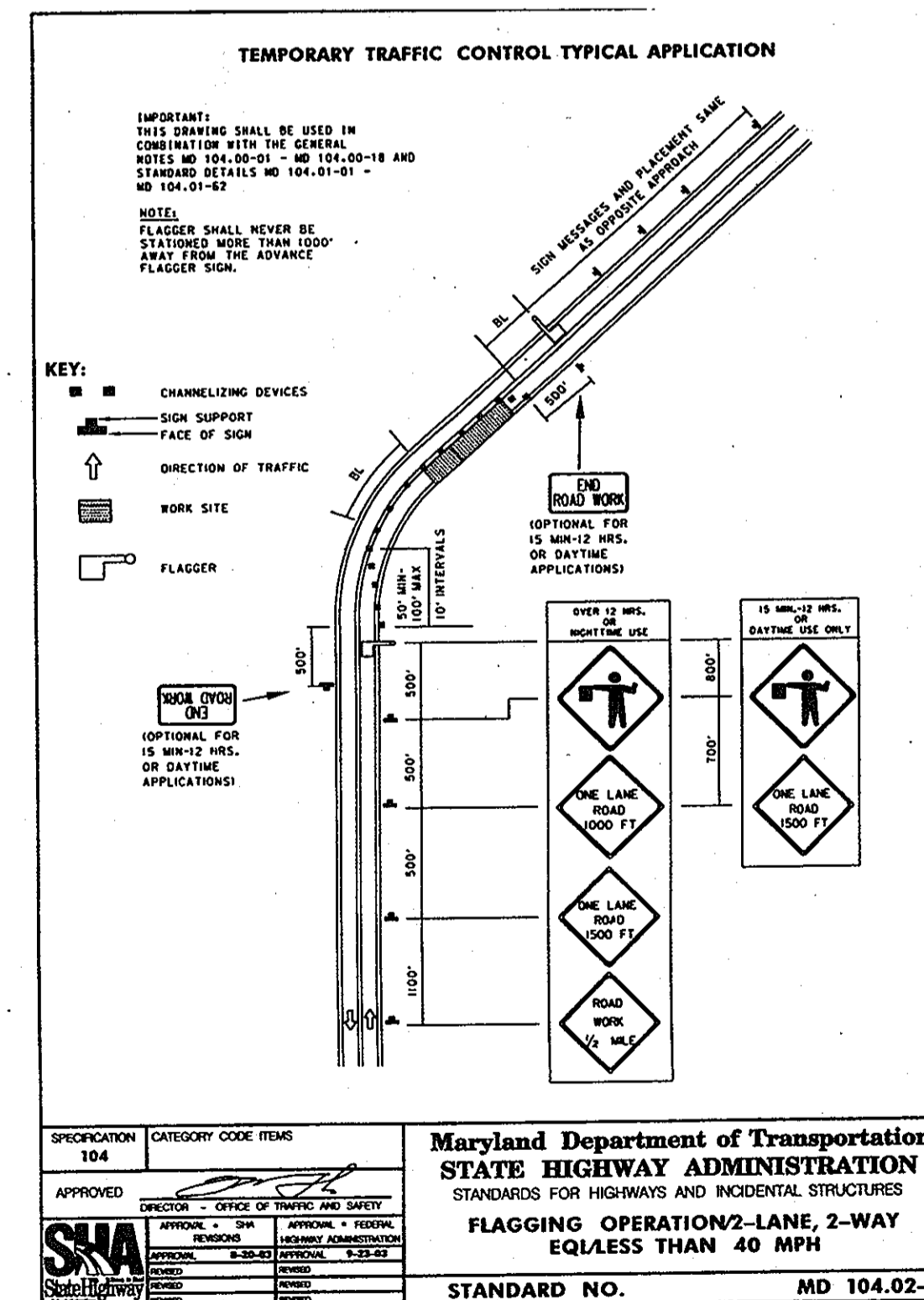
CHIEF, BUREAU OF UTILITIES DATE: 5/16/13

DEVELOPER  
100% LAND, INC.  
5300 DORSEY HALL DR STE 102  
ELLICOTT CITY MD 21042-7819  
ATTN: MR. DONALD R. REUWER  
(443) 367-0422

**ROBERT H. VOGEL ENGINEERING, INC.**  
ENGINEERS • SURVEYORS • PLANNERS  
8407 MAIN STREET  
ELLICOTT CITY, MD 21043  
TEL: 410.461.7666  
FAX: 410.461.8961



DESIGN BY: RJ			
DRAWN BY: RJ	JMR 2	MODIFY WATER MAIN PROFILE	8-06-15
CHECKED BY: RHV	JMR 1	CREATE LOTS FOR LOTS 4-35. MAKE ALL WATER AND SEWER PUBLIC. REVISE WATER AND SEWER LAYOUT AND PROFILES. REVISE WHC'S AND SHC'S.	5-14-12
DATE: JANUARY 2008	BY: NO	REVISION	DATE



MARYLAND DEPARTMENT OF TRANSPORTATION  
STATE HIGHWAY ADMINISTRATION  
STANDARDS FOR HIGHWAYS AND INCIDENTAL STRUCTURES  
FLAGGING OPERATION 2-LANE, 2-WAY  
EQ/LESS THAN 40 MPH  
STANDARD NO. MD 104.02-10

MARYLAND DEPARTMENT OF TRANSPORTATION  
STATE HIGHWAY ADMINISTRATION  
STANDARDS FOR HIGHWAYS AND INCIDENTAL STRUCTURES  
SHOULDER WORK/2-LANE, 2-WAY  
GREATER THAN 40 MPH/15 MIN - 12 HRS.  
OR DAYTIME ONLY  
STANDARD NO. MD 104.33-01

FINAL WATER & SEWER CONSTRUCTION PLAN

MAINTENANCE OF TRAFFIC USING REVISED SHA DETAIL

FOX HUNT ESTATES LOTS 4-35 AND OPEN SPACE LOTS 36 & 37 CONTRACT NO. 44-4445-D

SCALE AS SHOWN

SHEET 4 OF 4

TAX MAP 37 GRID 3 1ST ELECTION DISTRICT PARCEL '606' HOWARD COUNTY, MARYLAND

SDP-07-007