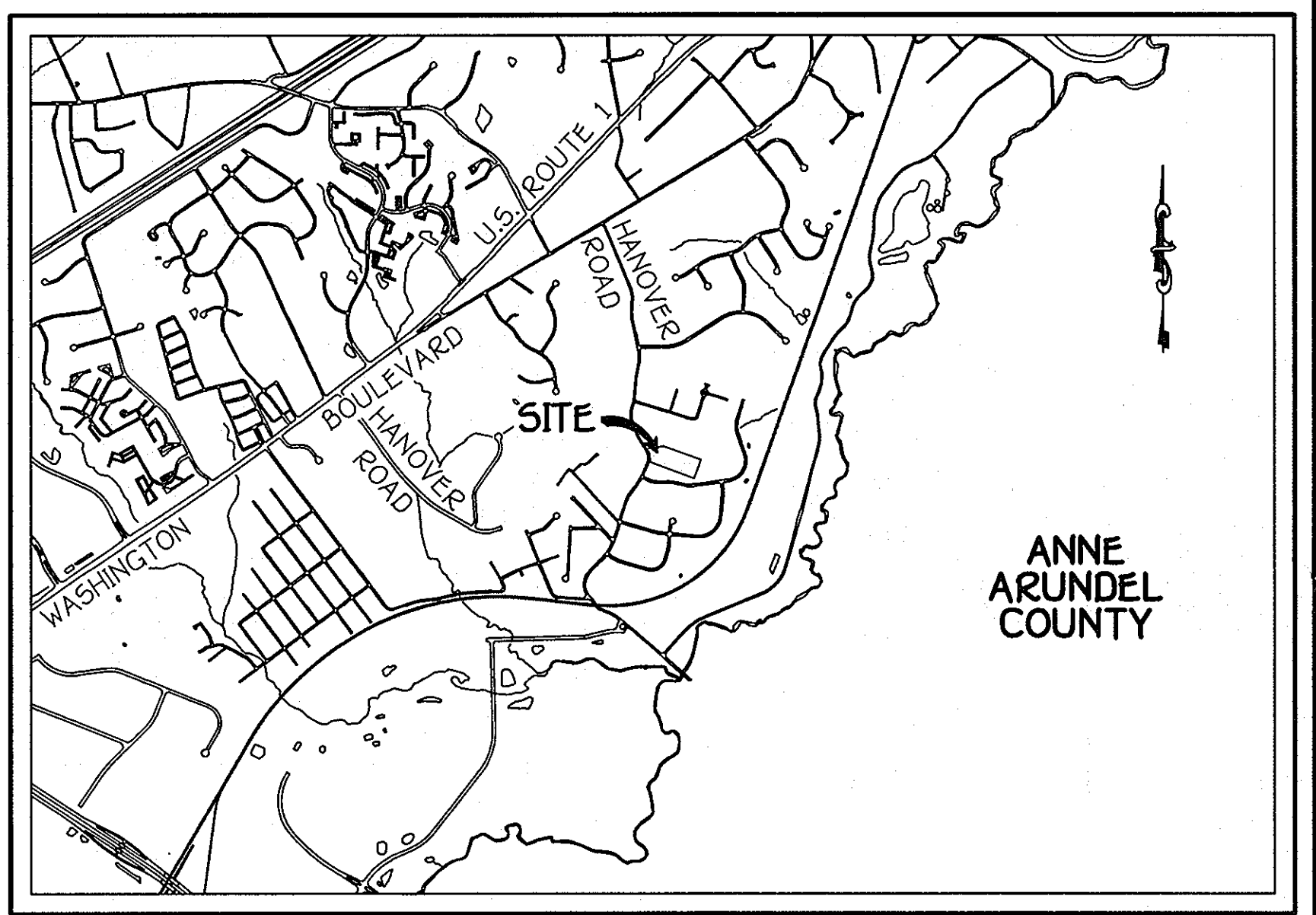
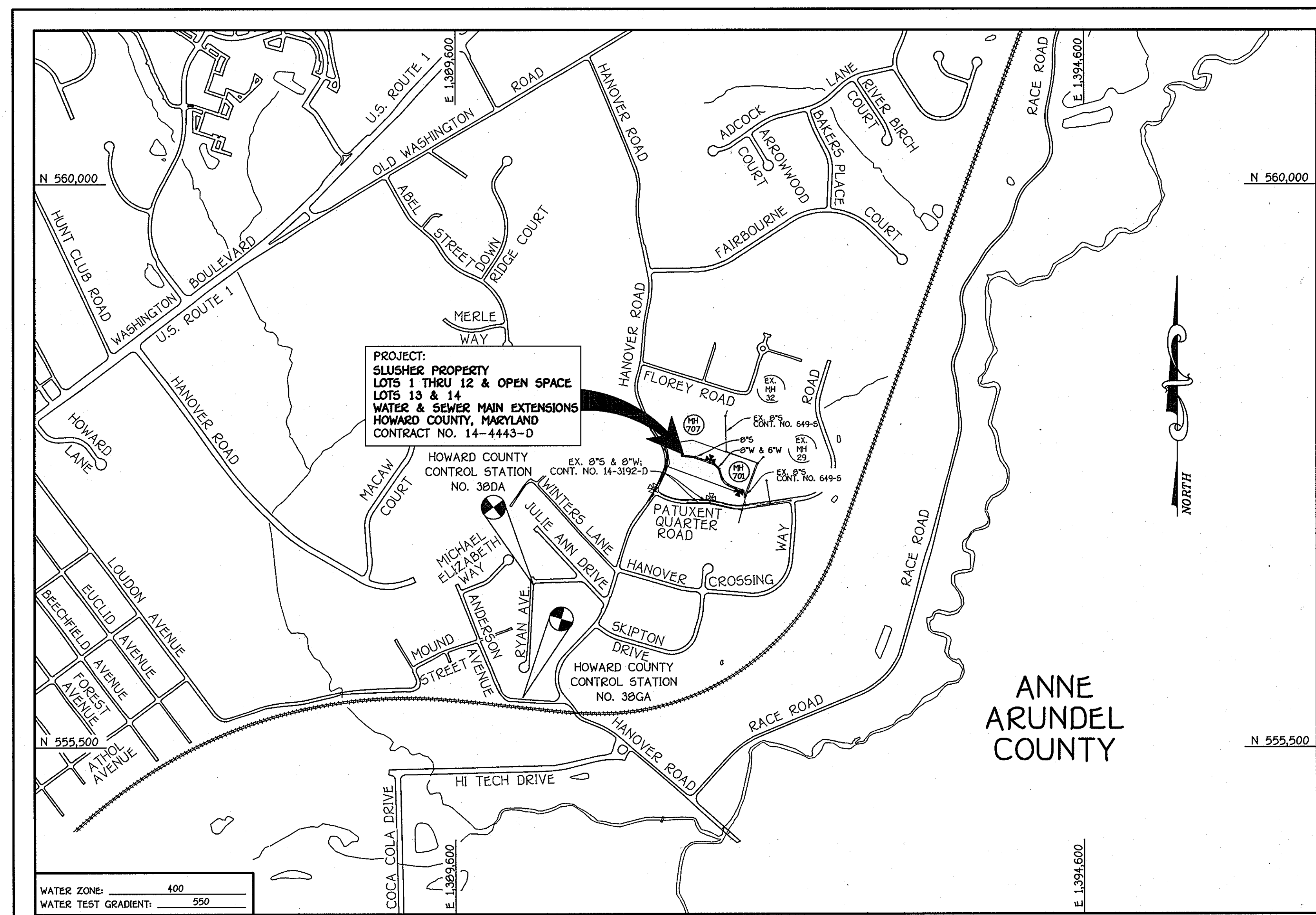


QUANTITIES					
ITEM	ESTIMATED	AS-BUILT		SUPPLIER	
		QUANTITIES	TYPE		
8" SEWER	649 L.F.	650.0	SDR-35	HD SUPPLY	
4" SEWER	275 L.F.	270.0	SDR-35	HD SUPPLY	
MANHOLES	7 EACH	7.0 EA.	CONCRETE PRECAST	HANSON	
8" WATER	406 L.F.	410.0	C-900 DR-14	HD SUPPLY	
6" WATER	259 L.F.	260.0	C-900 DR-14	HD SUPPLY	
1-1/2" WVC	221 L.F.	220.0	K-COPPER	HD SUPPLY	
6" VALVE	3 EACH	3.0	GATE/KENNEDY	HD SUPPLY	
8"x6" TEE	2 EACH	2.0	MJ	HD SUPPLY	
FIRE HYDRANT	2 EACH	2.0	C-502 KENNEDY	HD SUPPLY	
1/16 H.B.	5 EACH	5.0	EPXY MJ	HD SUPPLY	
1/32 H.B.	5 EACH	5.0	EPXY MJ	HD SUPPLY	
6" PLUG & BUTTRESS	1 EACH	1.0	EPXY MJ	HD SUPPLY	
8"x6" REDUCER	1 EACH	1.0	EPXY MJ	HD SUPPLY	
SINGLE OUTSIDE METER SETTING	12 EACH	12.0	FORD	HD SUPPLY	
CONTINUITY TEST STATION	2 EACH	2.0	CONCRETE	HD SUPPLY	

NAME OF UTILITY CONTRACTOR: **GRAY AND SONS**
 SURVEY & DRAFTING DIVISION AS-BUILT DATE:



LOCATION MAP
SCALE: 1" = 200'

GENERAL NOTES

- PART A
- APPROXIMATE LOCATIONS OF EXISTING MAINS ARE SHOWN. THE CONTRACTOR SHALL TAKE ALL NECESSARY PRECAUTIONS TO PROTECT EXISTING MAINS AND SERVICES AND MAINTAIN UNINTERRUPTED SERVICE. ANY DAMAGE INCURRED SHALL BE REPAIRED IMMEDIATELY TO THE SATISFACTION OF THE ENGINEER AT THE CONTRACTOR'S EXPENSE.
 - TOPOGRAPHIC FIELD SURVEYS WERE PERFORMED ON OR ABOUT FEBRUARY, 2004 BY FISHER, COLLINS & CARTER, INC.
 - HORIZONTAL AND VERTICAL SURVEY CONTROLS: THE COORDINATES SHOWN ON THE DRAWINGS ARE BASED ON MARYLAND STATE REFERENCE SYSTEM NAD '83/95 AS PROJECTED BY HOWARD COUNTY GEODETIC CONTROL STATIONS NO. 38DA & NO. 38GA.
 - ALL VERTICAL CONTROLS ARE AS INDICATED IN THE BENCHMARK INFORMATION. VERTICAL CONTROLS PROVIDED ON THE DRAWINGS.
 - ALL PIPE ELEVATIONS SHOWN ARE INVERT ELEVATIONS UNLESS OTHERWISE NOTED ON THE PLANS.
 - CLEAR ALL UTILITIES BY A MINIMUM OF 12 INCHES. CLEAR ALL POLES BY 5'-0" MINIMUM OR TUNNEL AS REQUIRED UNLESS OTHERWISE NOTED. THE OWNER HAS CONTACTED THE UTILITY COMPANIES AND HAS MADE ARRANGEMENTS FOR BRACING OF POLES AS SHOWN ON THE DRAWINGS. IN THE EVENT THE CONTRACTOR'S WORK REQUIRES BRACING OF ADDITIONAL POLES, ANY COST INCURRED BY THE OWNER FOR THE BRACING OF THE ADDITIONAL POLES OR DAMAGES SHALL BE DEDUCTED FROM MONIES OWED THE CONTRACTOR. THE CONTRACTOR SHALL COORDINATE WITH THE UTILITY COMPANIES TO SCHEDULE THE BRACING OF THE POLES.
 - FOR DETAILS NOT SHOWN ON THE DRAWINGS, AND FOR MATERIALS AND CONSTRUCTION METHODS, USE HOWARD COUNTY DESIGN MANUAL VOLUME IV, STANDARD SPECIFICATIONS AND DETAILS FOR CONSTRUCTION (LATEST EDITION). THE CONTRACTOR SHALL HAVE A COPY OF VOLUME IV ON THE JOB SITE.
 - WHERE TEST PITS HAVE BEEN MADE ON EXISTING UTILITIES, THEY ARE NOTED BY THE SYMBOL (S) AT THE LOCATIONS OF THE TEST PITS. A NOTE OR NOTES CONTAINING THE RESULTS OF THE TEST PIT OR PITS IS INCLUDED ON THE DRAWINGS. EXISTING UTILITIES IN THE VICINITY OF THE PROPOSED WORK FOR WHICH TEST PITS HAVE NOT BEEN DUG SHALL BE LOCATED BY THE CONTRACTOR TWO WEEKS IN ADVANCE OF CONSTRUCTION OPERATIONS AT HIS OWN EXPENSE.
 - THE CONTRACTOR SHALL NOTIFY THE FOLLOWING UTILITY COMPANIES OR AGENCIES AT LEAST FIVE WORKING DAYS BEFORE STARTING WORK SHOWN ON THESE PLANS:

- | | |
|------------------------------|----------------|
| AT&T | 1-800-252-1133 |
| BGE (CONSTRUCTION SERVICES) | 410-637-8713 |
| BGE (EMERGENCY) | 410-695-0123 |
| BUREAU OF UTILITIES | 410-313-4900 |
| COLONIAL PIPELINE CO. | 410-795-1390 |
| MISS UTILITY | 1-800-257-7777 |
| STATE HIGHWAY ADMINISTRATION | 410-531-5533 |
| VERIZON | 1-800-743-0033 |

- TREES AND SHRUBS ARE TO BE PROTECTED FROM DAMAGE TO THE MAXIMUM EXTENT. TREES AND SHRUBS LOCATED WITHIN THE CONSTRUCTION STRIP ARE NOT TO BE REMOVED OR DAMAGED BY THE CONTRACTOR.
- CONTRACTOR SHALL REMOVE TREES, STUMPS AND ROOTS ALONG THE LINE OF EXCAVATION. PAYMENT FOR SUCH REMOVAL SHALL BE INCLUDED IN THE UNIT PRICE BID FOR THE CONSTRUCTION OF THE MAIN.
- THE CONTRACTOR SHALL NOTIFY THE BUREAU OF HIGHWAYS, HOWARD COUNTY, AT (410)-313-7450 AT LEAST FIVE WORKING DAYS BEFORE OPEN CUTTING OR BORING/LACKING OF ANY COUNTY ROAD FOR LAYING WATER/SEWER MAINS OR HOUSE CONNECTIONS. THE APPROVAL OF THESE DRAWINGS WILL CONSTITUTE COMPLIANCE WITH DPW REQUIREMENTS PER SECTION 10.114(d) OF THE HOWARD COUNTY CODE.

- PART B: WATER MAIN GENERAL NOTES
- ALL WATER MAINS SHALL BE AWWA PVC C900 UNLESS OTHERWISE NOTED.
 - TOPS OF ALL WATER MAINS SHALL HAVE A MINIMUM OF 3'-0" OF COVER UNLESS OTHERWISE NOTED.
 - VALVES ADJACENT TO TEES SHALL BE STRAPPED TO TEES.
 - ALL FITTINGS SHALL BE BUTTRESSED OR ANCHORED WITH CONCRETE IN ACCORDANCE WITH STANDARD DETAILS UNLESS OTHERWISE PROVIDED FOR ON THE DRAWINGS.
 - FIRE HYDRANTS SHALL BE SET TO THE BURY LINE ELEVATIONS SHOWN ON THE DRAWINGS. ALL FIRE HYDRANTS SHALL BE INSTALLED IN ACCORDANCE WITH STANDARD DETAILS. THE SOIL AROUND THE FIRE HYDRANT SHALL BE COMPACTED IN ACCORDANCE WITH SECTION 1000 AND SECTION 1005 OF THE STANDARD SPECIFICATIONS.
 - THE CONTRACTOR SHALL NOT OPERATE ANY WATER MAIN VALVES ON THE EXISTING WATER SYSTEM.
 - FOR PVC WATER MAINS, ALL RECORDS FOR THE QUALITY CONTROL AND QUALITY TEST REQUIREMENTS NOTED IN SECTION 51 OF THE AWWA STANDARD C900 FOR PVC PRESSURE PIPE SHALL BE SUBMITTED WITH THE PIPE MATERIAL CERTIFICATIONS OR SHOP DRAWINGS PRIOR TO APPROVAL OF THE MATERIAL FOR USE. THE TEST RECORDS SHALL BE FOR THE PIPE TO BE INSTALLED UNDER THIS CONTRACT. ALL PVC PIPE SHALL CONTAIN MARKINGS TO ALLOW CROSS REFERENCING OF THE PIPE SUPPLIED TO THE TEST RECORDS RECEIVED.
 - UNLESS OTHERWISE NOTED ON THE PLANS OR IN THE SPECIFICATIONS, SEVENTEEN (17) POUND SACRIFICIAL ANODES SHALL BE INSTALLED ON ALL VALVES AND METALLIC FITTINGS USED WITH PVC WATER MAINS IN ACCORDANCE WITH VOLUME IV, STANDARD SPECIFICATIONS AND DETAILS FOR CONSTRUCTION. MAGNESIUM ANODES SHALL BE INSTALLED ON ALL VALVES AND DUCTILE IRON FITTINGS INCLUDING RESTRAINTS AND HARNESSES. ZINC ANODES SHALL BE INSTALLED ON ALL STAINLESS STEEL FITTINGS AND SADDLES USED WITH PVC MAINS. ALL "TEES" USED WITH PVC MAINS SHALL BE DUCTILE IRON.
 - ALL DWELLING UNITS SHALL HAVE A 1-1/2" WATER HOUSE CONNECTION WITH A 1" OUTSIDE METER SETTING; STD. DET. W-3.28.

- PART C: SEWER MAIN GENERAL NOTES
- ALL SEWER MAINS SHALL BE D.I.P. OR P.V.C. AS SPECIFIED ON PLANS.
 - ALL MANHOLES SHALL BE 4'-0" INSIDE DIAMETER UNLESS OTHERWISE NOTED.
 - FORCE MAINS SHALL BE D.I.P. ONLY.
 - MANHOLES SHOWN WITH 12" AND 16" WALLS ARE FOR BRICK MANHOLES ONLY.
 - MANHOLES DESIGNATED W.T. IN PLAN AND PROFILE SHALL HAVE WATERTIGHT FRAME AND COVER, STANDARD DETAIL G5-52. WHERE WATERTIGHT MANHOLE FRAMES AND COVERS ARE USED, SET TOP OF FRAME 1'-6" ABOVE FINISHED GRADE UNLESS OTHERWISE NOTED ON THE DRAWINGS.
 - HOUSE(S) WITH THE SYMBOL "C.N.S." INDICATES THAT CELLAR CANNOT BE SERVED.

DEVELOPER
 GORDON DEVELOPMENT COMPANY, INC.
 1490 REISTERSTOWN ROAD
 SUITE 330
 BALTIMORE, MARYLAND 21209
 PHONE: (443) 375-0324

CONTRACT NO. 14-4443-D
 SLUSHER PROPERTY
 LOTS 1 THRU 12 & OPEN SPACE LOTS 13 & 14
 WATER AND SEWER MAIN EXTENSIONS
 HOWARD COUNTY, MARYLAND

NOTE: THIS ORIGINAL CONSTRUCTION PLAN, SHEET 1 OF 4 SUPERSEDES THE WATER & SEWER MAIN CONSTRUCTION PLAN PREVIOUSLY APPROVED AND SIGNED BY THE DEPARTMENT OF PLANNING AND ZONING, ON MAY 21, 2009.

DEVELOPER'S CERTIFICATION

I/WE HEREBY CERTIFY THAT ALL DEVELOPMENT AND CONSTRUCTION WILL BE DONE ACCORDING TO THIS PLAN OF DEVELOPMENT AND PLAN FOR EROSION AND SEDIMENT CONTROL AND THAT ALL RESPONSIBLE PERSONNEL INVOLVED IN THE CONSTRUCTION PROJECT WILL HAVE A CERTIFICATE OF ATTENDANCE AT THE DEPARTMENT OF THE ENVIRONMENT APPROVED TRAINING PROGRAM FOR THE CONTROL OF SEDIMENT AND EROSION BEFORE BEGINNING THE PROJECT. I ALSO AUTHORIZE PERIODIC ON-SITE INSPECTION BY THE HOWARD SOIL CONSERVATION DISTRICT OR THEIR AUTHORIZED AGENTS, AS ARE DEEMED NECESSARY.

SIGNATURE OF DEVELOPER _____ DATE _____

ENGINEER'S CERTIFICATION

I HEREBY CERTIFY THAT THIS PLAN FOR EROSION AND SEDIMENT CONTROL REPRESENTS A PRACTICAL AND WORKABLE PLAN BASED ON MY PERSONAL KNOWLEDGE OF THE SITE CONDITIONS AND THAT IT WAS PREPARED IN ACCORDANCE WITH THE REQUIREMENTS OF THE HOWARD SOIL CONSERVATION DISTRICT.

SIGNATURE OF ENGINEER _____ DATE _____

SEDIMENT CONTROL MEASURES FOR THIS CONTRACT WILL BE IMPLEMENTED IN ACCORDANCE WITH SECTION 309 OF THE HOWARD COUNTY DESIGN MANUAL - VOLUME IV: STANDARD SPECIFICATIONS AND DETAILS FOR CONSTRUCTION AND AS SHOWN ON F-08-180.

SIGNATURE OF DEVELOPER _____ DATE _____

GP-08-098

THIS DEVELOPMENT IS APPROVED FOR EROSION AND SEDIMENT CONTROL BY HOWARD SOIL CONSERVATION DISTRICT.

APPROVED: *John R. Robertson* 4/27/11
 HOWARD SOIL CONSERVATION DISTRICT

TYPE OF BUILDING: RESIDENTIAL - SINGLE FAMILY DETACHED
 NUMBER OF LOTS: 14 (12 BUILDABLE)
 NO. OF WATER HOUSE CONNECTIONS: -12-
 NO. OF SEWER HOUSE CONNECTIONS: -12-
 DRAINAGE AREA: PATAPSCO
 TREATMENT PLANT: PATAPSCO WASTEWATER TREATMENT PLANT; CITY OF BALTIMORE

VICINITY MAP
SCALE: 1" = 600'

PLAN REFERENCE NUMBERS:
 SP-03-012 F-08-180
 P-07-007

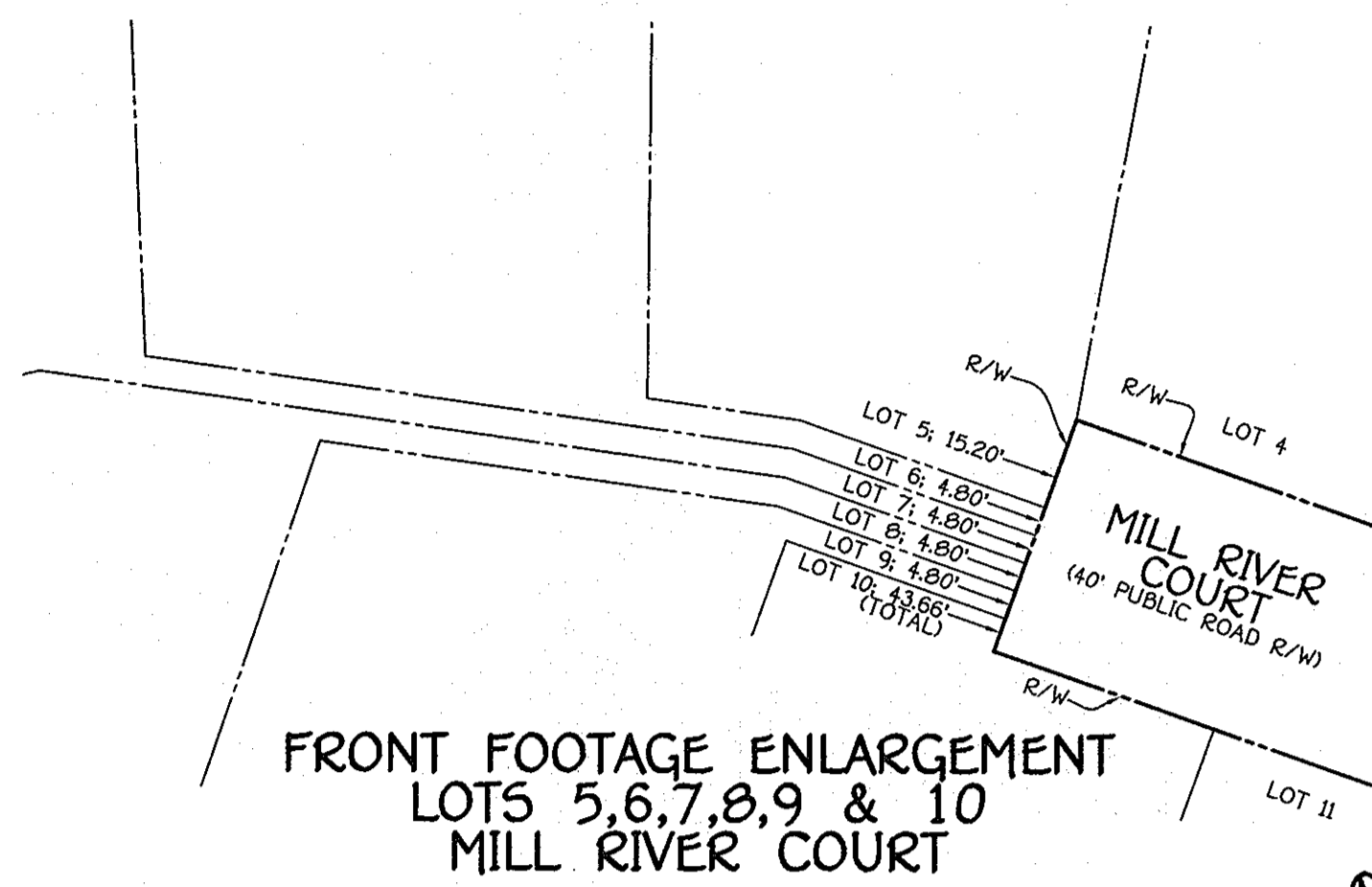
CONTRACT NO. 14-4443-D
SLUSHER PROPERTY
 LOTS 1 THRU 12 & OPEN SPACE LOTS 13 & 14
 WATER AND SEWER MAIN EXTENSIONS
 HOWARD COUNTY, MARYLAND

BENCHMARK INFORMATION

B.M.#1 - HOWARD COUNTY CONTROL STATION #38DA NAD '83 (APPROX. 20' SOUTH FROM THE INTERSECTION OF RYAN AVE. AND KRISTIN DR. LOCATED ON THE EAST SIDE OF RYAN DRIVE)
 N 556,786.301
 E 1,390,221.4773
 ELEVATION = 126.145

B.M.#2 - HOWARD COUNTY CONTROL STATION # 38GA (NAD '83) (LOCATED ALONG THE NORTH SIDE OF LOUDON AVE. APPROX. 52.8' FROM BGE POLE #323644 AND 22.6' FROM CENTER OF LOUDON AVE.)
 N 555,897.3242
 E 1,390,132.1176
 ELEVATION = 80.853

DEPARTMENT OF PUBLIC WORKS HOWARD COUNTY, MARYLAND <i>John C. Brown</i> CHIEF, BUREAU OF UTILITIES	DEPARTMENT OF PLANNING AND ZONING HOWARD COUNTY, MARYLAND <i>John D. Brown</i> CHIEF, DEVELOPMENT ENGINEERING DIVISION	I HEREBY CERTIFY THAT THESE DOCUMENTS WERE PREPARED OR APPROVED BY ME, AND THAT I AM A DULY LICENSED PROFESSIONAL ENGINEER UNDER THE LAWS OF THE STATE OF MARYLAND. LICENSE NO. 12043 EXPIRATION DATE IS 7/31/12. FISHER, COLLINS & CARTER, INC. CIVIL ENGINEERING CONSULTANTS & LAND SURVEYORS CENTRAL SQUARE OFFICE PARK - 10272 BALTIMORE NATIONAL Pkz ELICOTT CITY, MARYLAND 21042 (410) 461-2255 <i>Paul W. Kriebel</i> PAUL W. KRIEBEL	DESIGNED BY: B.C.R. DRAWN BY: B.C.R. CHECKED BY: KCT Z AS BUILT P.W.K. DATE: APRIL, 2011 BY NO. REVISION	WATER AND SEWER MAINS TITLE SHEET 600' SCALE MAP NO. 38 BLOCK NO. 15 F.C.C. WORK ORDER NO. 30728 FILE NAME: WATER AND SEWER MAIN EXTENSION TITLE SHEET	SLUSHER PROPERTY LOTS 1 THRU 12 & OPEN SPACE LOTS 13 & 14 CONTRACT NO. 14-4443-D FIRST ELECTION DISTRICT HOWARD COUNTY, MARYLAND SCALE AS SHOWN SHEET 1 OF 5
---	---	---	---	--	---



**FRONT FOOTAGE ENLARGEMENT
LOTS 5, 6, 7, 8, 9 & 10
MILL RIVER COURT**

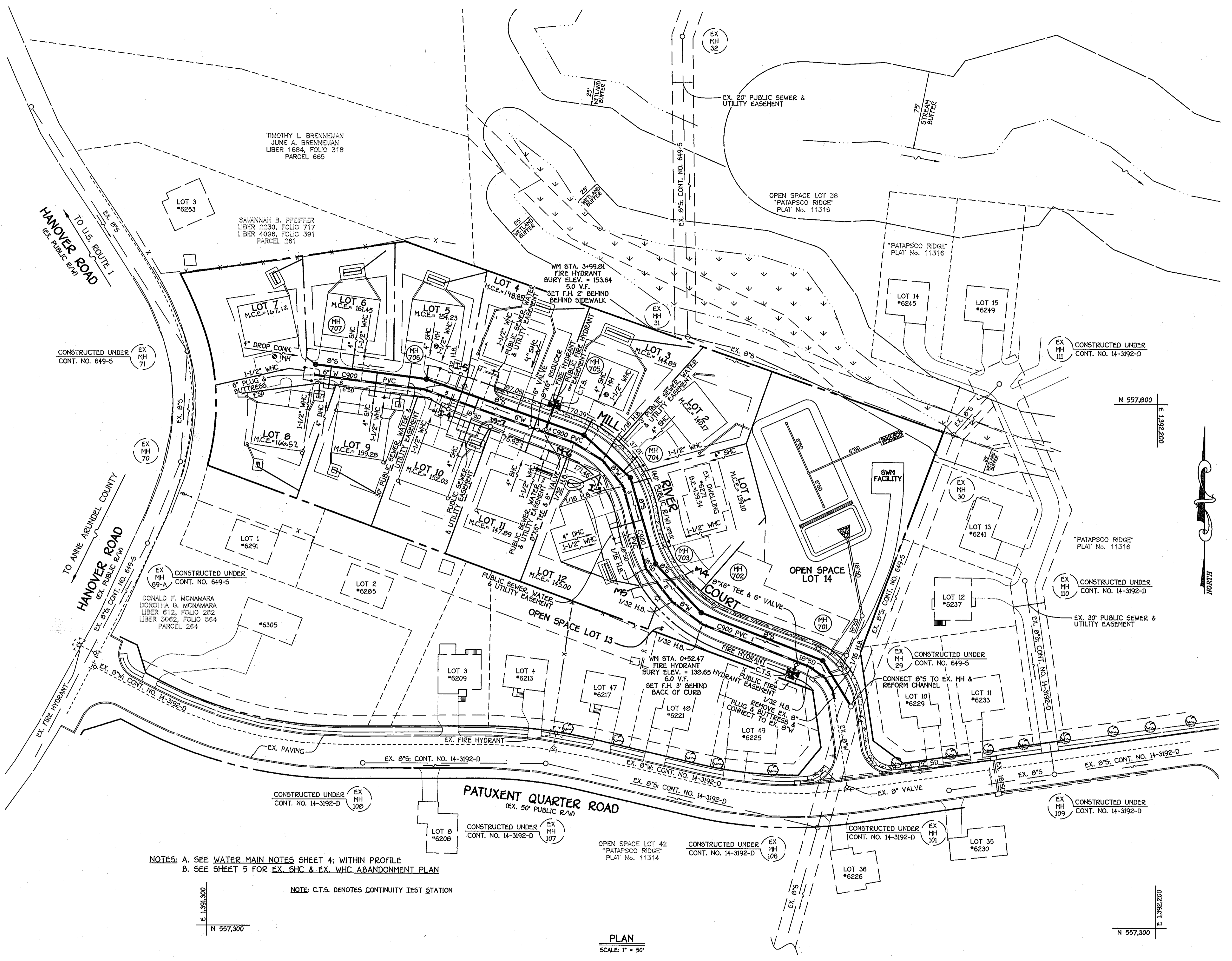
SCALE 1" = 30'

**MOVED SANITARY MANHOLES
M-705 + M-706
TO AVOID EXISTING
UTILITY POLES.**

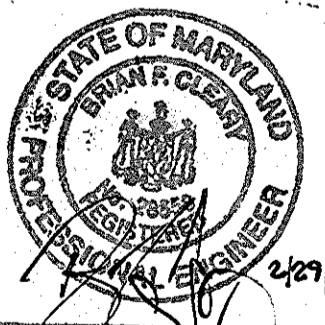
**M-704 WAS MOVED
5' CLOSER TO M-705 TO
AVOID EXISTING 3/4" WATER
+ UTILITY SERVICES TO
EXISTING DWELLING.**



**NOTE: THIS ORIGINAL CONSTRUCTION PLAN, SHEET 2 OF 5
SUPERSEDES THE WATER & SEWER MAIN CONSTRUCTION
PLAN PREVIOUSLY APPROVED AND SIGNED BY THE
DEPARTMENT OF PLANNING AND ZONING, ON
MAY 3, 2011.**



BENCHMARK ENG. INC.
8480 BOSTON RD. N.W.
SUITE 418
BELLINGHAM, WA 98221
(360) 465-4105



Professional Certification. I hereby certify that these documents were prepared or approved by me, and that I am a duly licensed professional engineer under the laws of the State of Maryland.

License No. **28559** Expiration Date: **7/22/13**

FOR REVISIONS BY BENCHMARK ENGINEERING ONLY

**NOTES: A. SEE WATER MAIN NOTES SHEET 4; WITHIN PROFILE
B. SEE SHEET 5 FOR EX. SHC & EX. WHC ABANDONMENT PLAN**

NOTE: C.T.S. DENOTES CONTINUITY TEST STATION

PLAN
SCALE 1" = 50'

DEPARTMENT OF PUBLIC WORKS
HOWARD COUNTY, MARYLAND

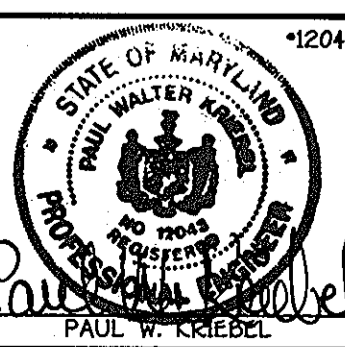
Sheila C. ...
CHIEF, BUREAU OF UTILITIES

DEPARTMENT OF PLANNING AND ZONING
HOWARD COUNTY, MARYLAND

Paul W. ...
CHIEF, DEVELOPMENT ENGINEERING DIVISION

I HEREBY CERTIFY THAT THESE DOCUMENTS WERE PREPARED OR APPROVED BY ME, AND THAT I AM A DULY LICENSED PROFESSIONAL ENGINEER UNDER THE LAWS OF THE STATE OF MARYLAND. LICENSE NO. 12043 EXPIRATION DATE IS 7/16/12.

FISHER, COLLINS & CARTER, INC.
CIVIL ENGINEERING CONSULTANTS & LAND SURVEYORS
CENTRAL SQUARE OFFICE PARK - 10272 BALTIMORE NATIONAL FREE
ELLIOTT CITY, MARYLAND 21042
410.463.2929



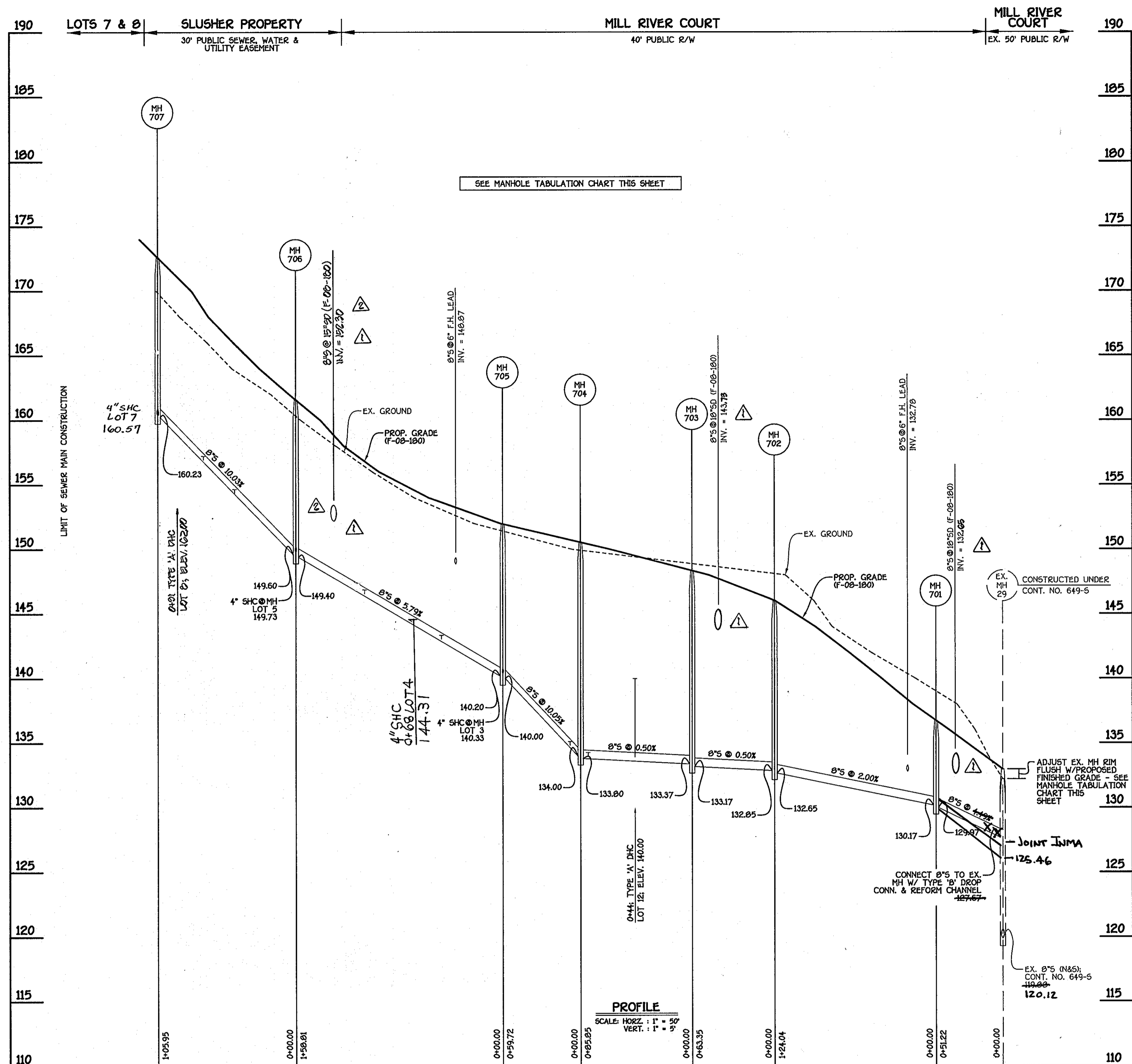
DESIGNED BY:	B.C.R.
DRAWN BY:	B.C.R.
CHECKED BY:	P.W.K.
DATE:	JULY, 2011
BY NO.	

WATER AND SEWER MAINS PLAN	
600' SCALE MAP NO.	38
BLOCK NO.	15
F.C.C. WORK ORDER NO.	30729
FILE NAME:	WATER AND SEWER MAIN EXTENSION PLAN

SLUSHER PROPERTY
LOTS 1 THRU 12 & OPEN SPACE LOTS 13 & 14
CONTRACT NO. 14-4443-D
FIRST ELECTION DISTRICT
HOWARD COUNTY, MARYLAND

SCALE AS SHOWN
SHEET 2 OF 5

CONTRACT NO. 14-4443-D
SLUSHER PROPERTY
LOTS 1 THRU 12 & OPEN SPACE LOTS 13 & 14
WATER AND SEWER MAIN EXTENSIONS
HOWARD COUNTY, MARYLAND



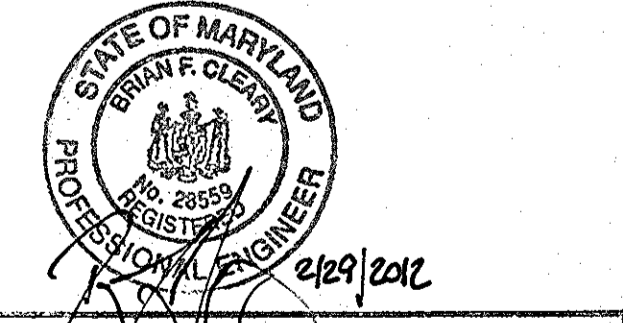
NO.	NORTHING	EASTING	RIM ELEVATION
EX. MH 29*	557510.74	1391910.52	132.97*
701	557554.33	1391803.62	136.75
702	557599.07	1391760.24	146.05
703	557646.08	1391724.91	148.41
704	557720.43	1391700.63	150.46
705	557760.78	1391656.60	152.03
706	557821.64	1391506.85	161.60
707	557835.27	1391401.78	172.63

*ADJUST EX. MANHOLE RIM FLUSH W/PROPOSED FINISHED GRADE. SEE PROFILE THIS SHEET

NOTE: SET MH RIMS FLUSH W/PROPOSED FINISHED GRADE.

STATION	LOT	ELEVATION
MH 703 TO MH 704		
0+44 LT.	12 (DHC)	140.64
0+80 RT.	1	134.30
MH 704 TO MH 705		
0+08 RT.	2	135.37
0+68 RT.	3	140.63
MH 705 TO MH 706		
0+47 LT.	11	143.69
1+06 LT.	10	147.37
0+68 RT.	4	144.71
0+68 RT.	5	149.09
MH 706 TO MH 707		
0+47 LT.	9	154.24
0+71 RT.	6	157.17
0+9 LT.	8 (DHC)	162.44
0+68 RT.	7 (DROP CONN)	163.24

8" SEWER MAIN: MILL RIVER COURT

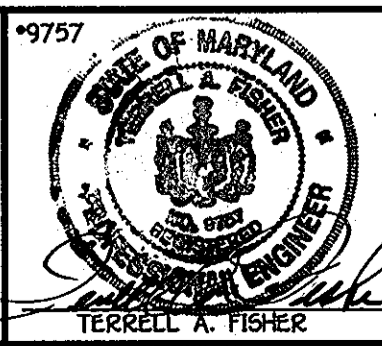


Professional certification. I hereby certify that these documents were prepared or approved by me, and that I am a duly licensed professional engineer under the laws of the State of Maryland.
 License No. 20559, Expiration Date: 7/22/13
 FOR REVISIONS BY BENCHMARK ENGINEERING ONLY

DEPARTMENT OF PUBLIC WORKS
 HOWARD COUNTY, MARYLAND
 Chief, Bureau of Utilities

DEPARTMENT OF PLANNING AND ZONING
 HOWARD COUNTY, MARYLAND
 Chief, Development Engineering Division

FISHER, COLLINS & CARTER, INC.
 CIVIL ENGINEERING CONSULTANTS & LAND SURVEYORS
 CENTENNIAL SQUARE OFFICE PARK - 10272 BALTIMORE NATIONAL PIKE
 ELICOTT CITY, MARYLAND 21042
 (410) 461-2292



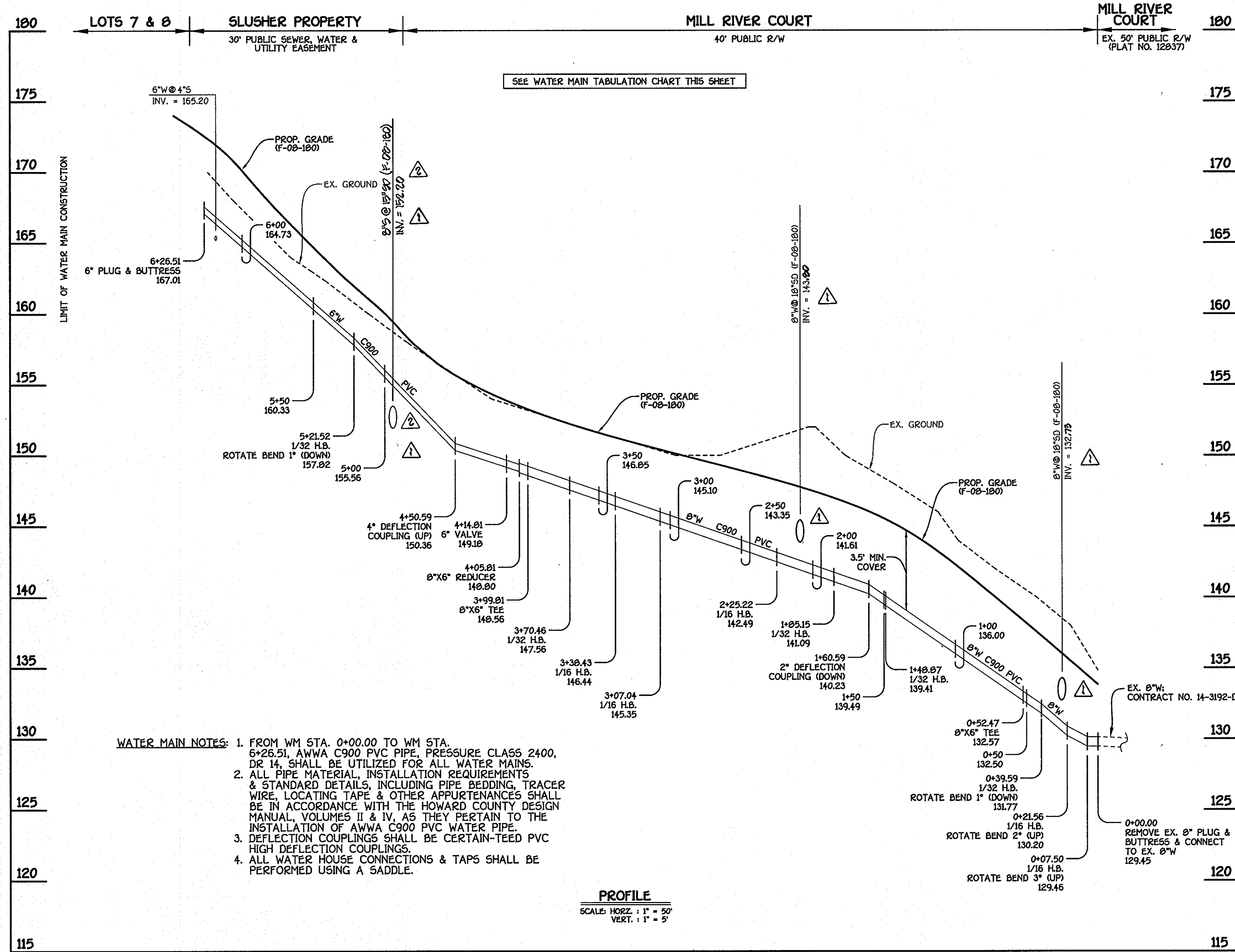
DESIGNED BY:	B.C.R.	DATE:	APRIL 2009
DRAWN BY:	B.C.R.	DATE:	APRIL 2009
CHECKED BY:	P.W.K.	DATE:	APRIL 2009
DATE:	APRIL 2009	BY:	NO.

SEWER MAIN
 PROFILE & CHARTS
 600' SCALE MAP NO. 30 BLOCK NO. 15
 F.C.C. WORK ORDER NO. 30728
 FILE NAME: WATER AND SEWER MAIN PROFILES

SLUSHER PROPERTY
 LOTS 1 THRU 12 & OPEN SPACE LOTS 13 & 14
 CONTRACT NO. 14-4443-D
 FIRST ELECTION DISTRICT
 HOWARD COUNTY, MARYLAND

SCALE AS SHOWN
 SHEET 3 OF 5

K:\GIS\PROJ\130728 GreenSpring\130728 Water And Sewer Base Plan.dwg, 4/13/2009 1:55:06 PM, Brandon...



SEE WATER MAIN TABULATION CHART THIS SHEET

- WATER MAIN NOTES:**
- FROM WM STA. 0+00.00 TO WM STA. 6+26.51, AWWA C900 PVC PIPE, PRESSURE CLASS 2400, DE 14, SHALL BE UTILIZED FOR ALL WATER MAINS.
 - ALL PIPE MATERIAL, INSTALLATION REQUIREMENTS & STANDARD DETAILS, INCLUDING PIPE BEDDING, TRACER WIRE, LOCATING TAPE & OTHER APPURTENANCES SHALL BE IN ACCORDANCE WITH THE HOWARD COUNTY DESIGN MANUAL, VOLUMES II & IV, AS THEY PERTAIN TO THE INSTALLATION OF AWWA C900 PVC WATER PIPE.
 - DEFLECTION COUPLINGS SHALL BE CERTAIN-TEED PVC HIGH DEFLECTION COUPLINGS.
 - ALL WATER HOUSE CONNECTIONS & TAPS SHALL BE PERFORMED USING A SADDLE.

PROFILE
SCALE: HORIZ. 1" = 50'
VERT. 1" = 5'

8" & 6" WATER MAIN: MILL RIVER COURT

WATER MAIN TABULATION CHART			
WM. STA.	APPURTENANCE	NORTHING	EASTING
8" & 6" WATER MAIN: MILL RIVER COURT			
0+00.00	REMOVE EX. 6" PLUG & BUTTRESS & CONNECT TO EX. 8" W.	557510.10	1391094.43
0+07.50	1/16 H.B.	557525.60	1391093.33
0+21.56	1/16 H.B.	557537.61	1391086.03
0+39.59	1/32 H.B.	557540.35	1391071.53
0+52.47	8" X 6" TEE	557553.00	1391059.56
1+40.07	1/32 H.B.	557568.47	1391070.90
1+05.15	1/32 H.B.	557610.07	1391140.74
2+25.22	1/16 H.B.	557641.44	1391075.02
3+07.04	1/16 H.B.	557720.24	1391093.70
3+30.43	1/16 H.B.	557744.82	1391074.25
3+70.46	1/32 H.B.	557761.50	1391046.95
3+99.01	8" X 6" TEE	557771.35	1391019.20
4+05.01	8" X 6" REDUCER	557773.35	1391013.62
4+14.01	6" VALVE	557776.35	1391005.14
5+21.52	1/32 H.B.	557811.06	1391004.51
6+26.51	6" PLUG & BUTTRESS	557825.36	1391000.39

LOT #	FROM	TO	DISTANCE	REMARKS
EXISTING #1	S/CO	SMH #704	18.8 FT	
	S/CO	SMH #703	84.0 FT	
	W/C	SMH #703	26.5 FT	
	W/C	SMH #704	70.5 FT	
LOT #2	S/CO	I-3	40.6 FT	
	S/CO	SMH #704	24.2 FT	
	W/C	SMH #704	18.5 FT	
LOT #3	S/CO	I-3	41.6 FT	
	S/CO	FIRE HYDRANT	37.5 FT	
	W/C	SMH #705	21.7 FT	
LOT #4	S/CO	FIRE HYDRANT	48.0 FT	
	W/C	SMH #705	23.0 FT	
	W/C	SMH #705	23.0 FT	
LOT #5	S/CO	F.H.	32.6 FT	
	S/CO	SMH #705	73.4 FT	
	W/C	F.H.	66.0 FT	
	W/C	S/CO 4T4	34.0 FT	
LOT #6	S/CO	I-4	45.3 FT	
	S/CO	SMH #706	17.0 FT	
	W/C	SMH #706	20.0 FT	
	W/C	SMH #707	38.7 FT	
LOT #7	S/CO	SMH #706	74.5 FT	
	S/CO	SMH #707	37.0 FT	
	W/C	SMH #706	64.0 FT	
	W/C	SMH #707	46.3 FT	
LOT #8	S/CO	SMH #707	13.0 FT	
	S/CO	SMH #706	117.6 FT	
	W/C	SMH #707	117.6 FT	
	W/C	SMH #706	12.2 FT	
LOT #9	S/CO	SMH #707	24.0 FT	
	S/CO	SMH #706	92.0 FT	
	W/C	SMH #707	15.4 FT	
	W/C	SMH #706	108.5 FT	

LOT #	FROM	TO	DISTANCE	REMARKS
9	S/CO	SMH 707	63.3 FT	
	S/CO	SMH 706	48.5 FT	
	W/C	SMH 707	70.5 FT	
	W/C	SMH 706	42.8 FT	
10	S/CO	I-4	34.5 FT	
	S/CO	M-7	29.0 FT	
	W/C	I-5	14.4 FT	
	W/C	SMH 706	26.6 FT	
11	S/CO	FIRE HYDRANT	52.5 FT	
	S/CO	SMH 705	57.2 FT	
	W/C	SMH 705	44.3 FT	
	W/C	F.H.	53.2 FT	
12	S/CO	SMH 703	53.0 FT	
	S/CO	SMH 704	61.0 FT	
	W/C	W/C 100'	53.5 FT	
	W/C	S/C 100'	67.0 FT	
FIRE HYDRANT	F.H.	FHV	26.0 FT	4+00
	F.H.	M V 6"	28.3 FT	
	F.H.	FHV	4.4 FT	
	F.H.	TEST S/M	3.5 FT	
FIRE HYDRANT	F.H.	FHV	10 FT	0+52
	F.H.	SMH 701	32 FT	
	F.H.V	SMH 701	24.7 FT	

DEPARTMENT OF PUBLIC WORKS
HOWARD COUNTY, MARYLAND

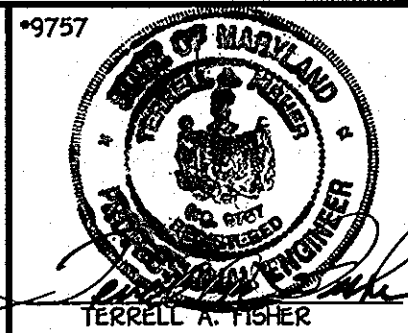
Steve C. Lane
CHIEF, BUREAU OF UTILITIES

DEPARTMENT OF PLANNING AND ZONING
HOWARD COUNTY, MARYLAND

Michael Damiano
CHIEF, DEVELOPMENT ENGINEERING DIVISION

5/21/09

FISHER, COLLINS & CARTER, INC.
CIVIL ENGINEERING CONSULTANTS & LAND SURVEYORS
CONTINENTAL SQUARE OFFICE PARK - 10272 BALTIMORE NATIONAL PIKE
ELICOTT CITY, MARYLAND 21042
(410) 461-2200



DESIGNED BY: B.C.R.
DRAWN BY: B.C.R.
CHECKED BY: P.W.K.
DATE: APRIL, 2009

REVISIONS:

1	AS BUILT	6/1/09
2	RL#s INDICATE & DENOTE ADDITIONAL 90' X-INCH; W/M STA. A+90	7/29/11
3	REPAIR 90' INVERT @ CROSSING / DELETE 90' CROSSING	4/9/11

WATER MAIN
PROFILE & CHART

600' SCALE MAP NO. 30 BLOCK NO. 15
F.C.C. WORK ORDER NO. 30722
FILE NAME: WATER AND SEWER MAIN PROFILES

SLUSHER PROPERTY
LOTS 1 THRU 12 & OPEN SPACE LOTS 13 & 14
CONTRACT NO. 14-4443-D
FIRST ELECTION DISTRICT
HOWARD COUNTY, MARYLAND

SCALE
AS
SHOWN

SHEET
4 OF 5

CONTRACT NO. 14-4443-D
SLUSHER PROPERTY
LOTS 1 THRU 12 & OPEN SPACE LOTS 13 & 14
WATER AND SEWER MAIN EXTENSIONS
HOWARD COUNTY, MARYLAND