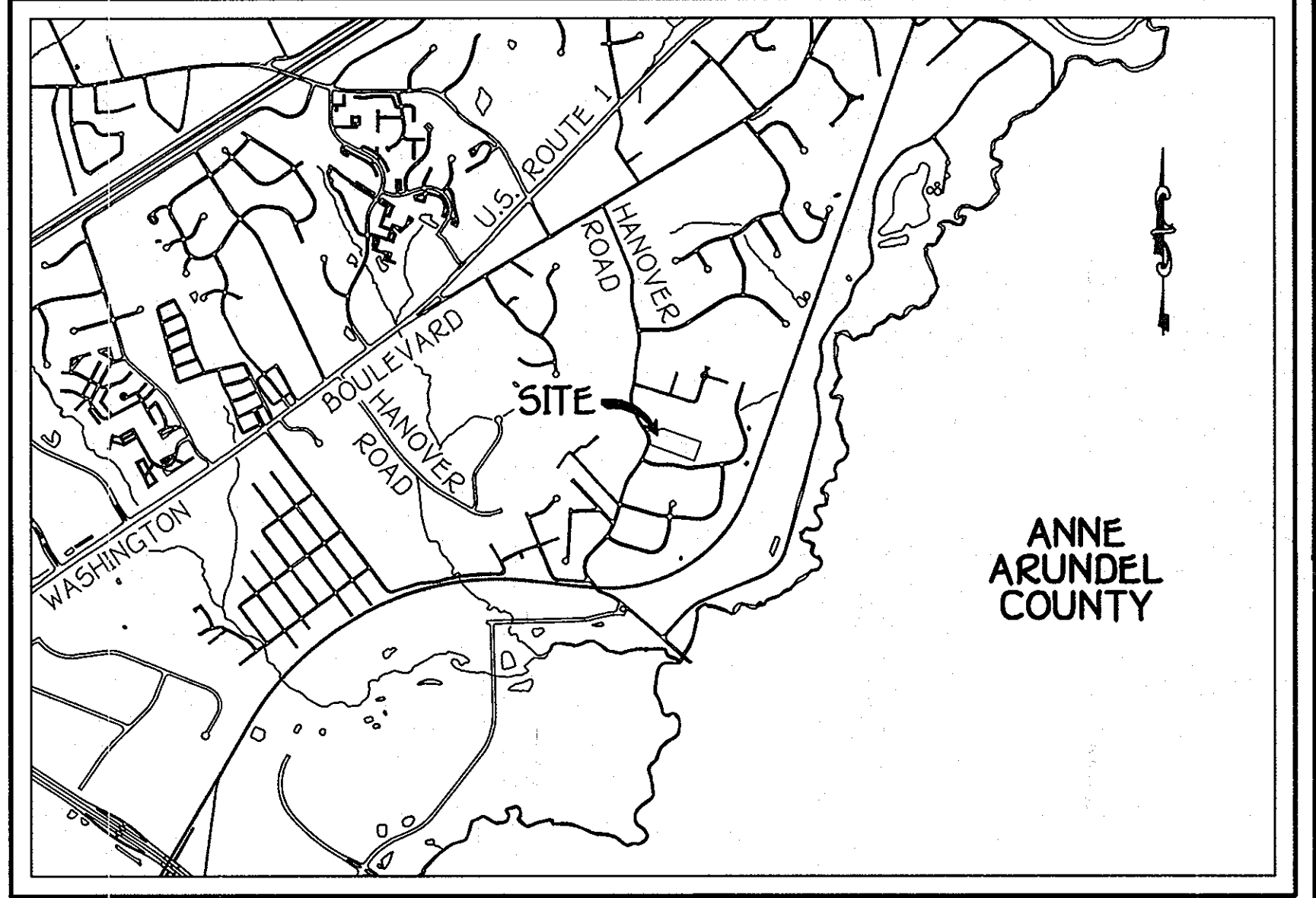
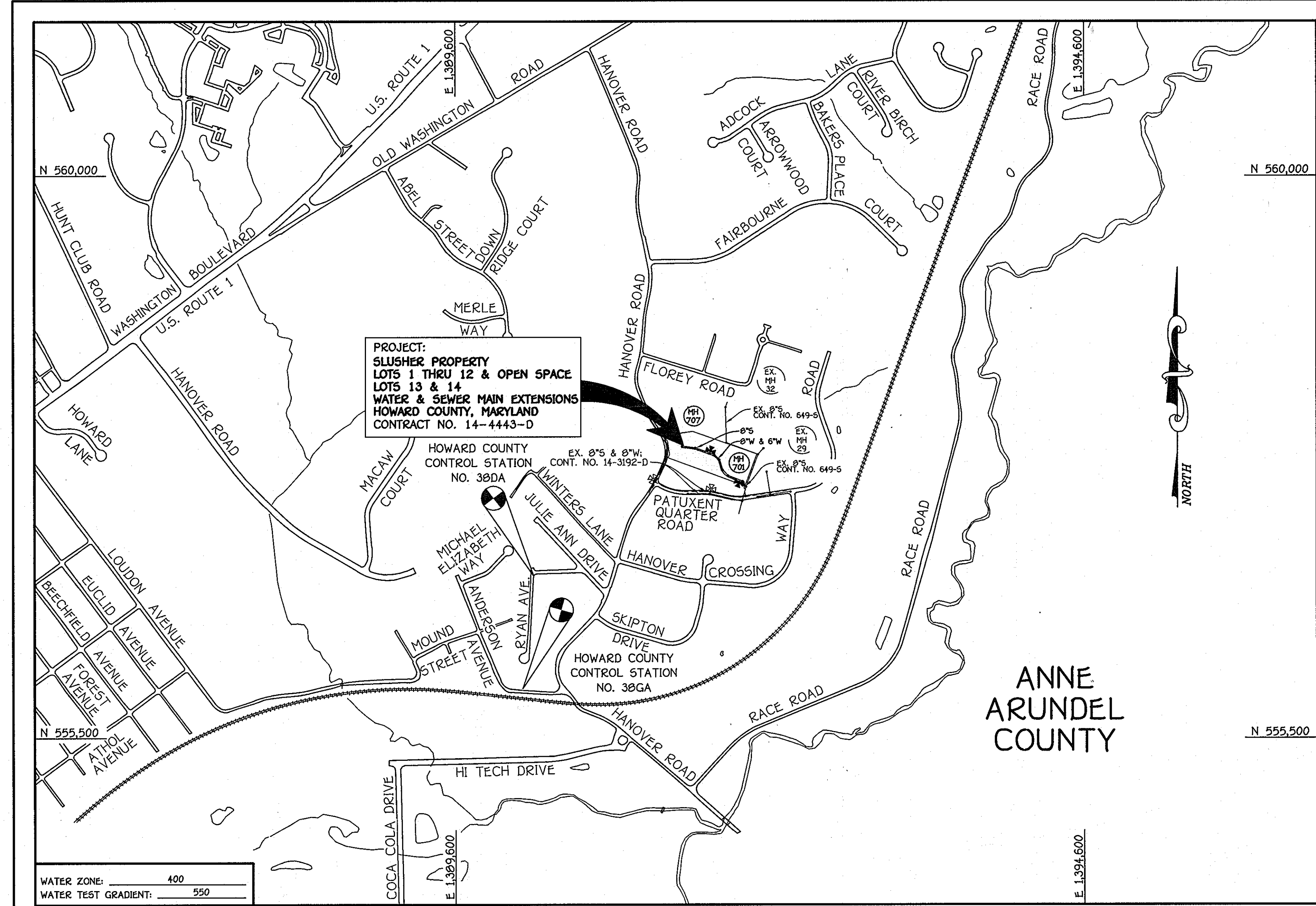


QUANTITIES				
ITEM	ESTIMATED	QUANTITIES	AS-BUILT	SUPPLIER
			TYPE	
8" SEWER	649 L.F.			
4" SEWER	279 L.F.			
MANHOLES	7 EACH			
8" WATER	406 L.F.			
6" WATER	259 L.F.			
1-1/2" WVC	221 L.F.			
3" VALVE	3 EACH			
8"x6" TEE	2 EACH			
FIRE HYDRANT	2 EACH			
1/16 H.B.	5 EACH			
1/32 H.B.	5 EACH			
6" PLUG & BUTTRESS	1 EACH			
8"x6" REDUCER	1 EACH			
SINGLE OUTSIDE METER SETTING	12 EACH			
CONTINUITY TEST STATION	2 EACH			
NAME OF UTILITY CONTRACTOR:				
SURVEY & DRAFTING DIVISION AS-BUILT DATE:				



LOCATION MAP  
SCALE: 1" = 2000'

GENERAL NOTES

- PART A
- APPROXIMATE LOCATIONS OF EXISTING MAINS ARE SHOWN. THE CONTRACTOR SHALL TAKE ALL NECESSARY PRECAUTIONS TO PROTECT EXISTING MAINS AND SERVICES AND MAINTAIN UNINTERRUPTED SERVICE. ANY DAMAGE INCURRED SHALL BE REPAIRED IMMEDIATELY TO THE SATISFACTION OF THE ENGINEER AT THE CONTRACTOR'S EXPENSE.
  - TOPOGRAPHIC FIELD SURVEYS WERE PERFORMED ON OR ABOUT FEBRUARY, 2004 BY FISHER, COLLINS & CARTER, INC.
  - HORIZONTAL AND VERTICAL SURVEY CONTROLS: THE COORDINATES SHOWN ON THE DRAWINGS ARE BASED ON MARYLAND STATE REFERENCE SYSTEM NAD '83/91' AS PROJECTED BY HOWARD COUNTY GEODETIC CONTROL STATIONS NO. 38DA & NO. 38GA.
  - ALL VERTICAL CONTROLS ARE AS INDICATED IN THE BENCHMARK INFORMATION. VERTICAL CONTROLS PROVIDED ON THE DRAWINGS.
  - ALL PIPE ELEVATIONS SHOWN ARE INVERT ELEVATIONS UNLESS OTHERWISE NOTED ON THE PLANS.
  - CLEAR ALL UTILITIES BY A MINIMUM OF 12 INCHES. CLEAR ALL POLES BY 5'-0" MINIMUM OR TUNNEL AS REQUIRED UNLESS OTHERWISE NOTED. THE OWNER HAS CONTACTED THE UTILITY COMPANIES AND HAS MADE ARRANGEMENTS FOR BRACING OF POLES AS SHOWN ON THE DRAWINGS. IN THE EVENT THE CONTRACTOR'S WORK REQUIRES BRACING OF ADDITIONAL POLES, ANY COST INCURRED BY THE OWNER FOR THE BRACING OF THE ADDITIONAL POLES OR DAMAGES SHALL BE DEDUCTED FROM MONIES OWED THE CONTRACTOR. THE CONTRACTOR SHALL COORDINATE WITH THE UTILITY COMPANIES TO SCHEDULE THE BRACING OF THE POLES.
  - FOR DETAILS NOT SHOWN ON THE DRAWINGS, AND FOR MATERIALS AND CONSTRUCTION METHODS, USE HOWARD COUNTY DESIGN MANUAL, VOLUME IV, STANDARD SPECIFICATIONS AND DETAILS FOR CONSTRUCTION (LATEST EDITION). THE CONTRACTOR SHALL HAVE A COPY OF VOLUME IV ON THE JOB SITE.
  - WHERE TEST PITS HAVE BEEN MADE ON EXISTING UTILITIES, THEY ARE NOTED BY THE SYMBOL AT THE LOCATIONS OF THE TEST PITS. A NOTE OR NOTES CONTAINING THE RESULTS OF THE TEST PIT OR PITS IS INCLUDED ON THE DRAWINGS. EXISTING UTILITIES IN THE VICINITY OF THE PROPOSED WORK FOR WHICH TEST PITS HAVE NOT BEEN DUG SHALL BE LOCATED BY THE CONTRACTOR TWO WEEKS IN ADVANCE OF CONSTRUCTION OPERATIONS AT HIS OWN EXPENSE.
  - THE CONTRACTOR SHALL NOTIFY THE FOLLOWING UTILITY COMPANIES OR AGENCIES AT LEAST FIVE WORKING DAYS BEFORE STARTING WORK SHOWN ON THESE PLANS:
    - BGE (CONSTRUCTION SERVICES) . . . . . 1-800-252-1133
    - BGE (EMERGENCY) . . . . . 410-637-8713
    - BUREAU OF UTILITIES . . . . . 410-685-0123
    - COLONIAL PIPELINE CO . . . . . 410-795-1390
    - MISS UTILITY . . . . . 1-800-257-7777
    - STATE HIGHWAY ADMINISTRATION . . . . . 410-531-5533
    - VERIZON . . . . . 1-800-743-0033
  - TREES AND SHRUBS ARE TO BE PROTECTED FROM DAMAGE TO THE MAXIMUM EXTENT. TREES AND SHRUBS LOCATED WITHIN THE CONSTRUCTION STRIP ARE NOT TO BE REMOVED OR DAMAGED BY THE CONTRACTOR.
  - CONTRACTOR SHALL REMOVE TREES, STUMPS AND ROOTS ALONG THE LINE OF EXCAVATION. PAYMENT FOR SUCH REMOVAL SHALL BE INCLUDED IN THE UNIT PRICE BID FOR THE CONSTRUCTION OF THE MAIN.
  - THE CONTRACTOR SHALL NOTIFY THE BUREAU OF HIGHWAYS, HOWARD COUNTY, AT (410)-313-7450 AT LEAST FIVE WORKING DAYS BEFORE OPEN CUTTING OR BORING/JACKING OF ANY COUNTY ROAD FOR LAYING WATER/SEWER MAINS OR HOUSE CONNECTIONS. THE APPROVAL OF THESE DRAWINGS WILL CONSTITUTE COMPLIANCE WITH DPW REQUIREMENTS PER SECTION 10.114(d) OF THE HOWARD COUNTY CODE.

- PART B: WATER MAIN GENERAL NOTES
- ALL WATER MAINS SHALL BE AWWA PVC C900 UNLESS OTHERWISE NOTED.
  - TOPS OF ALL WATER MAINS SHALL HAVE A MINIMUM OF 3" OF COVER UNLESS OTHERWISE NOTED.
  - VALVES ADJACENT TO TEES SHALL BE STRAPPED TO TEES.
  - ALL FITTINGS SHALL BE BUTTRESSED OR ANCHORED WITH CONCRETE IN ACCORDANCE WITH STANDARD DETAILS UNLESS OTHERWISE PROVIDED FOR ON THE DRAWINGS.
  - FIRE HYDRANTS SHALL BE SET TO THE BURY LINE ELEVATIONS SHOWN ON THE DRAWINGS. ALL FIRE HYDRANTS SHALL BE INSTALLED IN ACCORDANCE WITH STANDARD DETAILS. THE SOIL AROUND THE FIRE HYDRANT SHALL BE COMPACTED IN ACCORDANCE WITH SECTION 1000 AND SECTION 1005 OF THE STANDARD SPECIFICATIONS.
  - THE CONTRACTOR SHALL NOT OPERATE ANY WATER MAIN VALVES ON THE EXISTING WATER SYSTEM.
  - FOR PVC WATER MAINS, ALL RECORDS FOR THE QUALITY CONTROL AND QUALITY TEST REQUIREMENTS NOTED IN SECTION 51 OF THE AWWA STANDARD C900 FOR PVC PRESSURE PIPE SHALL BE SUBMITTED WITH THE PIPE MATERIAL CERTIFICATIONS OR SHOP DRAWINGS PRIOR TO APPROVAL OF THE MATERIAL FOR USE. THE TEST RECORDS SHALL BE FOR THE PIPE TO BE INSTALLED UNDER THIS CONTRACT. ALL PVC PIPE SHALL CONTAIN MARKINGS TO ALLOW CROSS REFERENCING OF THE PIPE SUPPLIED TO THE TEST RECORDS RECEIVED.
  - UNLESS OTHERWISE NOTED ON THE PLANS OR IN THE SPECIFICATIONS, SEVENTEEN (17) POUND SACRIFICIAL ANODES SHALL BE INSTALLED ON ALL VALVES AND METALLIC FITTINGS USED WITH PVC WATER MAINS IN ACCORDANCE WITH VOLUME IV, STANDARD SPECIFICATIONS AND DETAILS FOR CONSTRUCTION. MAGNESIUM ANODES SHALL BE INSTALLED ON ALL VALVES AND DUCTILE IRON FITTINGS INCLUDING RESTRAINTS AND HANGES. ZINC ANODES SHALL BE INSTALLED ON ALL STAINLESS STEEL FITTINGS AND SADDLES USED WITH PVC MAINS. ALL "TEES" USED WITH PVC MAINS SHALL BE DUCTILE IRON.
  - ALL DWELLING UNITS SHALL HAVE A 1-1/2" WATER HOUSE CONNECTION WITH A 1" OUTSIDE METER SETTING; STD. DET. W-3.22b.

- PART C: SEWER MAIN GENERAL NOTES
- ALL SEWER MAINS SHALL BE D.I.P. OR P.V.C. AS SPECIFIED ON PLANS.
  - ALL MANHOLES SHALL BE 4'-0" INSIDE DIAMETER UNLESS OTHERWISE NOTED.
  - FORCE MAINS SHALL BE D.I.P. ONLY.
  - MANHOLES SHOWN WITH 12" AND 18" WALLS ARE FOR BRICK MANHOLES ONLY.
  - MANHOLES DESIGNATED W.T. IN PLAN AND PROFILE SHALL HAVE WATERTIGHT FRAME AND COVER, STANDARD DETAIL G5.52. WHERE WATERTIGHT MANHOLE FRAMES AND COVERS ARE USED, SET TOP OF FRAME 1'-6" ABOVE FINISHED GRADE UNLESS OTHERWISE NOTED ON THE DRAWINGS.
  - HOWE(S) WITH THE SYMBOL "C.N.S." INDICATES THAT CELLAR CANNOT BE SERVED.

DEVELOPER  
GORDON DEVELOPMENT COMPANY, INC.  
1498 RESTERSTOWN ROAD  
SUITE 330  
BALTIMORE, MARYLAND 21209  
PHONE: (443) 375-0324

CONTRACT NO. 14-4443-D  
SLUSHER PROPERTY  
LOTS 1 THRU 12 & OPEN SPACE LOTS 13 & 14  
WATER AND SEWER MAIN EXTENSIONS  
HOWARD COUNTY, MARYLAND

TYPE OF BUILDING:	RESIDENTIAL - SINGLE FAMILY DETACHED
NUMBER OF LOTS:	14 (12 BUILDABLE)
NO. OF WATER HOUSE CONNECTIONS:	-12-
NO. OF SEWER HOUSE CONNECTIONS:	-12-
DRAINAGE AREA:	PATAFSCO
TREATMENT PLANT:	PATAFSCO WASTEWATER TREATMENT PLANT; CITY OF BALTIMORE

VICINITY MAP  
SCALE: 1" = 600'

PLAN REFERENCE NUMBERS:	SP-03-012	F-08-180
	P-07-007	

CONTRACT NO. 14-4443-D  
**SLUSHER PROPERTY**  
LOTS 1 THRU 12 & OPEN SPACE LOTS 13 & 14  
WATER AND SEWER MAIN EXTENSIONS  
HOWARD COUNTY, MARYLAND

BENCHMARK INFORMATION	
B.M.#1 - HOWARD COUNTY CONTROL STATION *38DA NAD '83	(APPROX. 20' SOUTH FROM THE INTERSECTION OF RYAN AVE. AND KRISTIN DR. LOCATED ON THE EAST SIDE OF RYAN DRIVE) N 556,756.3031 E 1,390,221.4773 ELEVATION = 126.145
B.M.#2 - HOWARD COUNTY CONTROL STATION *38GA NAD '83	(LOCATED ALONG THE NORTH SIDE OF LOUDON AVE. APPROX. 52.8' FROM BGE POLE *323644 AND 22.6' FROM CENTER OF LOUDON AVE.) N 555,897.3242 E 1,390,152.1176 ELEVATION = 80.853

**DEVELOPER'S CERTIFICATION**  
I/WE HEREBY CERTIFY THAT ALL DEVELOPMENT AND CONSTRUCTION WILL BE DONE ACCORDING TO THIS PLAN OF DEVELOPMENT AND PLAN FOR EROSION AND SEDIMENT CONTROL AND THAT ALL RESPONSIBLE PERSONNEL INVOLVED IN THE CONSTRUCTION PROJECT WILL HAVE A CERTIFICATE OF ATTENDANCE AT THE DEPARTMENT OF THE ENVIRONMENT APPROVED TRAINING PROGRAM FOR THE CONTROL OF SEDIMENT AND EROSION BEFORE BEGINNING THE PROJECT. I ALSO AUTHORIZE PERIODIC ON-SITE INSPECTION BY THE HOWARD SOIL CONSERVATION DISTRICT OR THEIR AUTHORIZED AGENTS, AS ARE DEEMED NECESSARY.\*

SIGNATURE OF DEVELOPER \_\_\_\_\_ DATE \_\_\_\_\_

**ENGINEER'S CERTIFICATION**  
I HEREBY CERTIFY THAT THIS PLAN FOR EROSION AND SEDIMENT CONTROL REPRESENTS A PRACTICAL AND WORKABLE PLAN BASED ON MY PERSONAL KNOWLEDGE OF THE SITE CONDITIONS AND THAT IT WAS PREPARED IN ACCORDANCE WITH THE REQUIREMENTS OF THE HOWARD SOIL CONSERVATION DISTRICT.\*

SIGNATURE OF ENGINEER \_\_\_\_\_ DATE \_\_\_\_\_

SEDIMENT CONTROL MEASURES FOR THIS CONTRACT WILL BE IMPLEMENTED IN ACCORDANCE WITH SECTION 309 OF THE HOWARD COUNTY DESIGN MANUAL - VOLUME IV: STANDARD SPECIFICATIONS AND DETAILS FOR CONSTRUCTION AND AS SHOWN ON F-08-180.

SIGNATURE OF DEVELOPER \_\_\_\_\_ DATE \_\_\_\_\_

GP-08-098  
THIS DEVELOPMENT IS APPROVED FOR EROSION AND SEDIMENT CONTROL BY HOWARD SOIL CONSERVATION DISTRICT.  
APPROVED:   
HOWARD SOIL CONSERVATION DISTRICT  
DATE: 4/27/11

DEPARTMENT OF PUBLIC WORKS  
HOWARD COUNTY, MARYLAND

DEPARTMENT OF PLANNING AND ZONING  
HOWARD COUNTY, MARYLAND

1 I HEREBY CERTIFY THAT THESE DOCUMENTS WERE PREPARED OR APPROVED BY ME, AND THAT I AM A DULY LICENSED PROFESSIONAL ENGINEER UNDER THE LAWS OF THE STATE OF MARYLAND. LICENSE NO. 12043 EXPIRATION DATE IS 7/31/12.

FISHER, COLLINS & CARTER, INC.  
CIVIL ENGINEERING CONSULTANTS & LAND SURVEYORS  
CENTRAL SQUARE OFFICE PARK - 10272 BALTIMORE NATIONAL Pkz  
ELICOTT CITY, MARYLAND 21042  
(410) 461 - 2225

DESIGNED BY: B.C.R.  
DRAWN BY: B.C.R.  
CHECKED BY: P.W.K.  
DATE: APRIL, 2011

PAUL W. KRIEBEL  
12043

DATE: 4/11/11

DATE: APRIL, 2011	BY: POC	REVISION: R#3: REVISE ESTIMATE QUANTITIES FOR 4" & 1 1/2" WVC	DATE: 7/29/11
FILE NAME: WATER AND SEWER MAIN EXTENSION TITLE SHEET	600' SCALE MAP NO. 38	BLOCK NO. 15	F.C.C. WORK ORDER NO. 30729

WATER AND SEWER MAINS  
TITLE SHEET

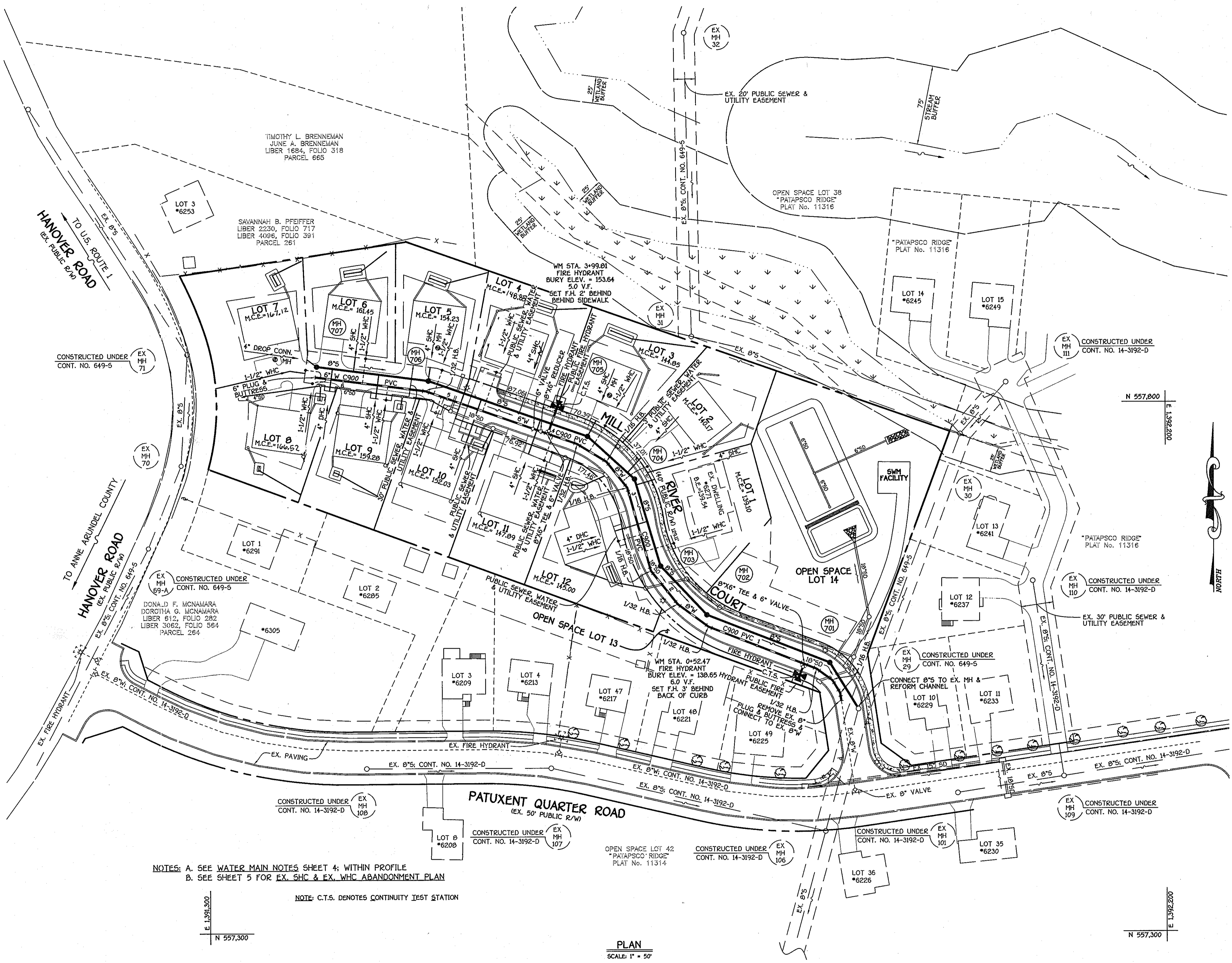
**SLUSHER PROPERTY**  
LOTS 1 THRU 12 & OPEN SPACE LOTS 13 & 14  
CONTRACT NO. 14-4443-D  
FIRST ELECTION DISTRICT  
HOWARD COUNTY, MARYLAND

SCALE AS SHOWN  
SHEET 1 OF 5

K:\5054PROJ\30729\_Geomspun.dwg 30729 Water And Sewer Base Plan (Redline 11.dwg, 4/9/2011 5:53:49 PM)

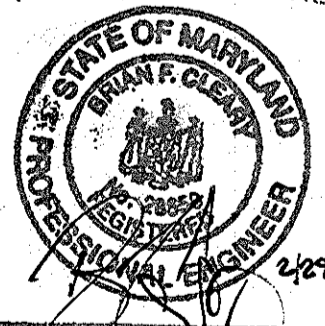
**FRONT FOOTAGE ENLARGEMENT  
LOTS 5, 6, 7, 8, 9 & 10  
MILL RIVER COURT**

SCALE 1" = 30'



NOTE: THIS ORIGINAL CONSTRUCTION PLAN, SHEET 2 OF 5 SUPERSEDES THE WATER & SEWER MAIN CONSTRUCTION PLAN PREVIOUSLY APPROVED AND SIGNED BY THE DEPARTMENT OF PLANNING AND ZONING, ON MAY 3, 2011.

BENCHMARK ENG. INC.  
8480 BACUMORE WATL PKE  
SUITE 418  
BELLINGHAM CITY, MD 21043  
(410) 466-4103



Professional Certification. I hereby certify that these documents were prepared or approved by me, and that I am a duly licensed professional engineer under the laws of the State of Maryland.

License No. 29559 Expiration Date: 7/23/13

FOR REVISIONS BY BENCHMARK ENGINEERING ONLY

NOTES: A. SEE WATER MAIN NOTES SHEET 4; WITHIN PROFILE  
B. SEE SHEET 5 FOR EX. SHC & EX. WHC ABANDONMENT PLAN

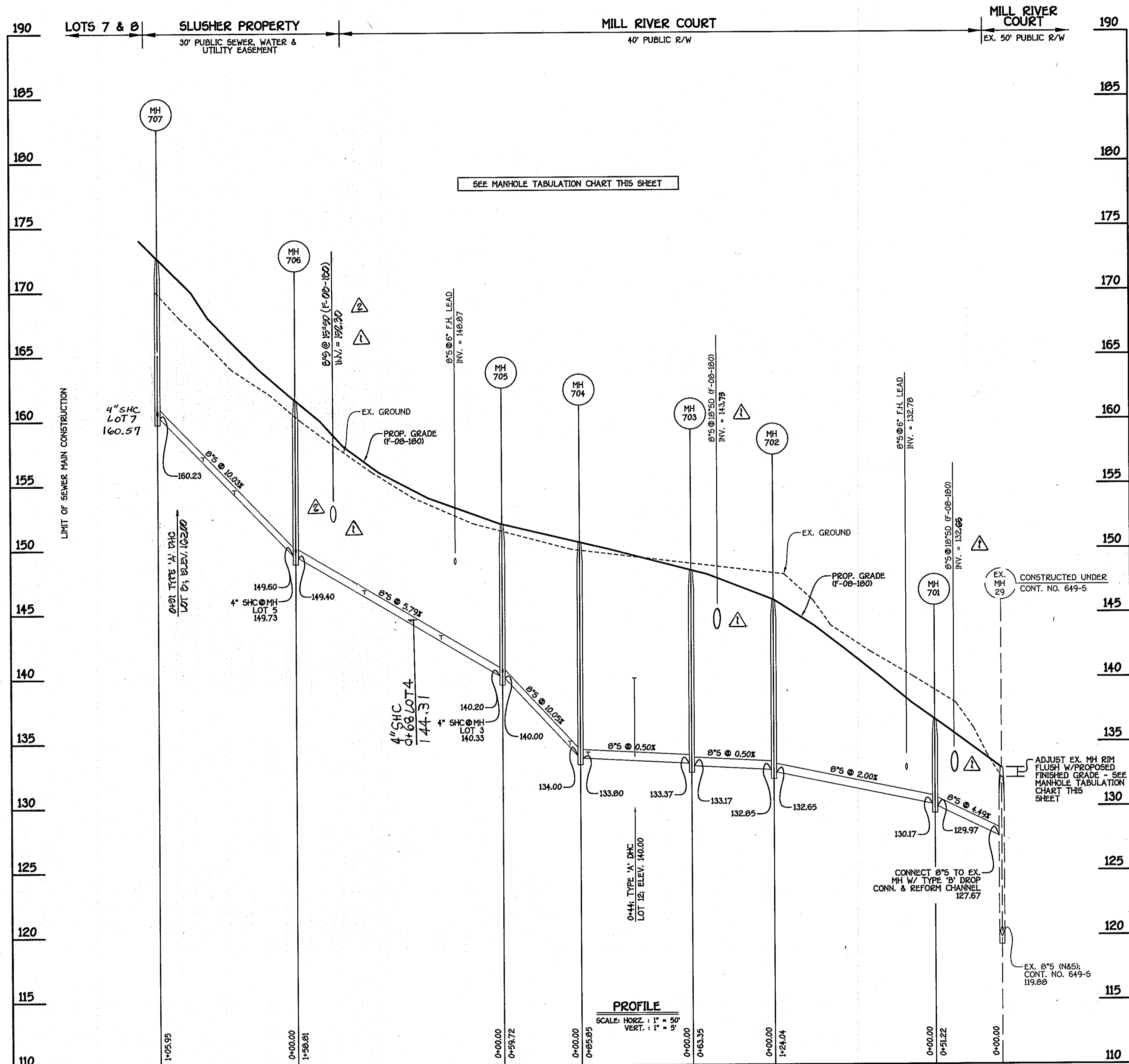
NOTE: C.T.S. DENOTES CONTINUITY TEST STATION

PLAN  
SCALE 1" = 50'

DEPARTMENT OF PUBLIC WORKS HOWARD COUNTY, MARYLAND Chief, Bureau of Utilities 8/11/11 DATE	DEPARTMENT OF PLANNING AND ZONING HOWARD COUNTY, MARYLAND Chief, Development Engineering Division N.G. 8/15/11 DATE	I HEREBY CERTIFY THAT THESE DOCUMENTS WERE PREPARED OR APPROVED BY ME, AND THAT I AM A DULY LICENSED PROFESSIONAL ENGINEER UNDER THE LAWS OF THE STATE OF MARYLAND. LICENSE NO. 12043 EXPIRATION DATE IS 7/23/12 FISHER, COLLINS & CARTER, INC. CIVIL ENGINEERING CONSULTANTS & LAND SURVEYORS CENTRAL SERVICE OFFICE BLDG. - 1872 BALTIMORE NATIONAL PKE ELICOTT CITY, MARYLAND 21042 (410) 461-2255 PAUL W. KRIEDEL	DESIGNED BY: B.C.R. DRAWN BY: B.C.R. CHECKED BY: P.W.K. DATE: JULY, 2011 BY NO.	WATER AND SEWER MAINS PLAN 600' SCALE MAP NO. 39 BLOCK NO. 15 F.C.C. WORK ORDER NO. 39729 FILE NAME: WATER AND SEWER MAIN EXTENSION PLAN	SLUSHER PROPERTY LOTS 1 THRU 12 & OPEN SPACE LOTS 13 & 14 CONTRACT NO. 14-4443-D FIRST ELECTION DISTRICT HOWARD COUNTY, MARYLAND SCALE AS SHOWN SHEET 2 OF 5

CONTRACT NO. 14-4443-D  
SLUSHER PROPERTY  
LOTS 1 THRU 12 & OPEN SPACE LOTS 13 & 14  
WATER AND SEWER MAIN EXTENSIONS  
HOWARD COUNTY, MARYLAND

K:\5054P001\30729\_GreenSpan.dwg\30729\_Water And Sewer Base Plan (redline 2) June 2011.dwg, 7/29/2011 2:21:51 PM



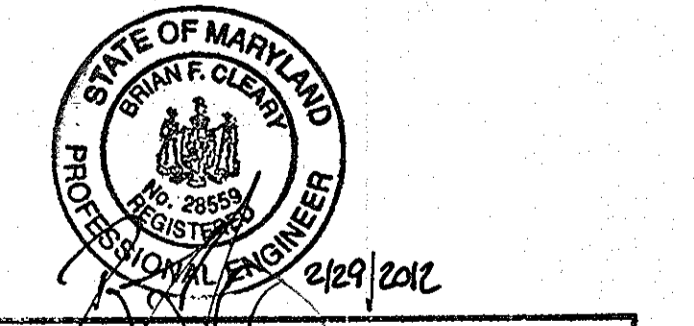
MANHOLE TABULATION CHART			
NO.	NORTHING	EASTING	RIM ELEVATION
EX. MH 29*	557510.74	1391910.52	132.97*
701	557554.33	1391803.62	136.75
702	557599.07	1391768.24	146.05
703	557646.08	1391724.91	148.41
704	557728.43	1391700.63	150.46
705	557768.78	1391656.60	152.03
706	557821.64	1391506.85	161.60
707	557835.27	1391401.78	172.63

\*ADJUST EX. MANHOLE RIM FLUSH W/PROPOSED FINISHED GRADE. SEE PROFILE THIS SHEET.

NOTE: SET MH RIMS FLUSH W/PROPOSED FINISHED GRADE.

SHC INVERT @ PROPERTY LINE CHART		
STATION	LOT	ELEVATION
MH 703 TO MH 704		
0+44 LT.	12 (DHC)	140.64
0+80 RT.	1	134.30
MH 704 TO MH 705		
0+08 RT.	2	135.37
0+68 RT.	3	140.63
MH 705 TO MH 706		
0+47 LT.	11	143.69
1+06 LT.	10	147.37
0+68 RT.	4	144.71
0+68 RT.	5	149.09
MH 706 TO MH 707		
0+47 LT.	9	154.94
0+71 RT.	6	157.17
0+9 LT.	8 (DHC)	162.44
0+68 RT.	7 (DROP CONN.)	163.24

**8" SEWER MAIN: MILL RIVER COURT**

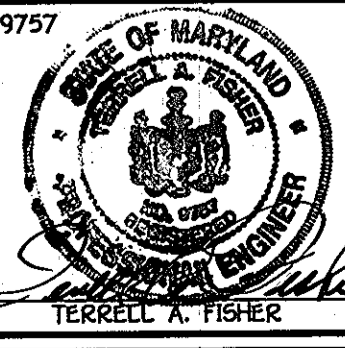


Professional Certification: I hereby certify that these documents were prepared or approved by me, and that I am a duly licensed professional engineer under the laws of the State of Maryland.  
 License No. 28559, Expiration Date: 7/22/12  
 FOR REVISIONS BY BENCHMARK ENGINEERING ONLY

DEPARTMENT OF PUBLIC WORKS  
 HOWARD COUNTY, MARYLAND  
 Chief, Bureau of Utilities

DEPARTMENT OF PLANNING AND ZONING  
 HOWARD COUNTY, MARYLAND  
 Chief, Development Engineering Division

FISHER, COLLINS & CARTER, INC.  
 CIVIL ENGINEERING CONSULTANTS & LAND SURVEYORS  
 CENTENNIAL SQUARE OFFICE PARK - 18272 BALTIMORE NATIONAL FREE  
 ELLICOTT CITY, MARYLAND 21114  
 (410) 461-2255



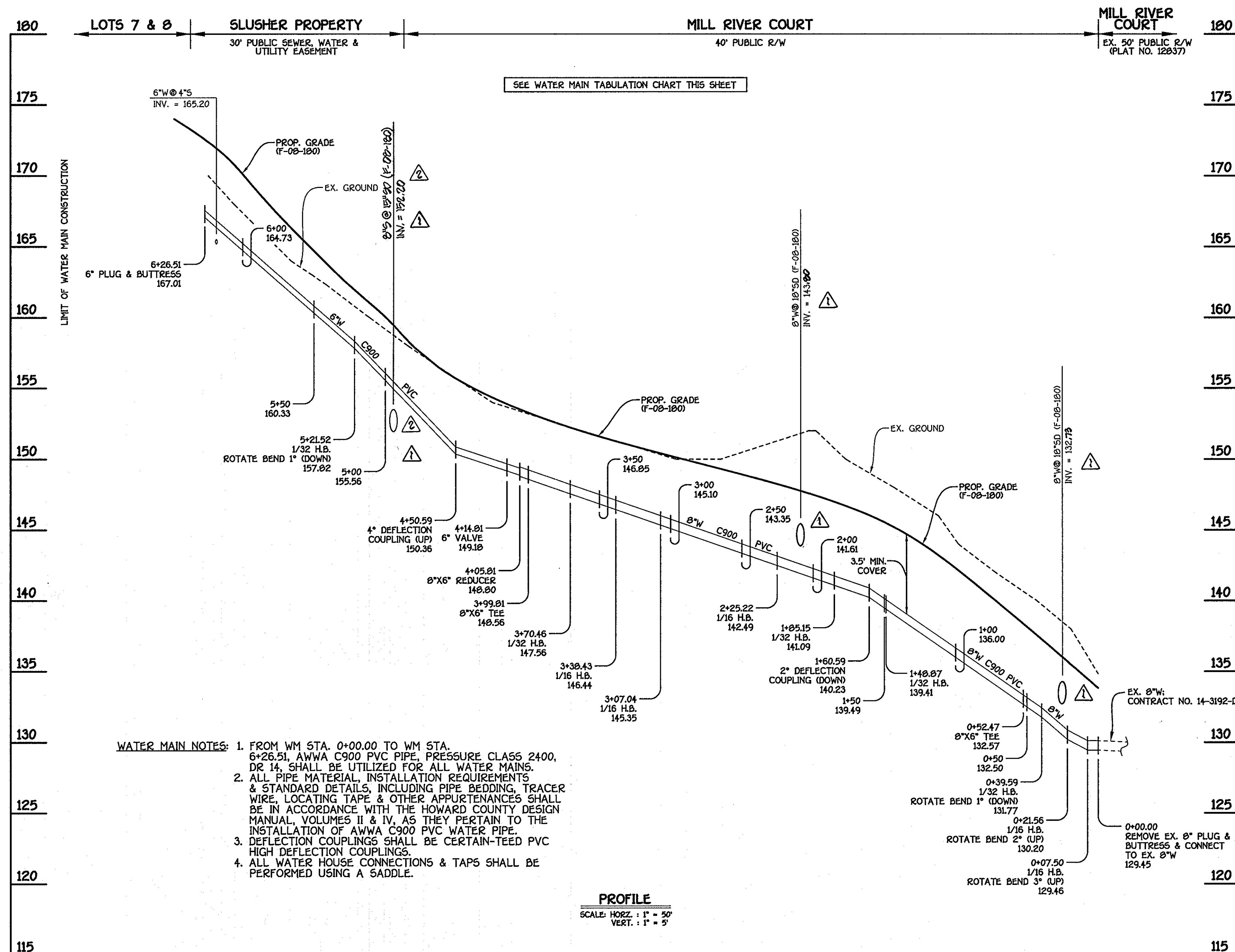
DESIGNED BY:	B.C.R.
DRAWN BY:	B.C.R.
CHECKED BY:	P.W.K.
DATE:	APRIL, 2009
BY NO.	
REVISION	

RELOCATE 4" SHC LOT 4 AND REVISE DHC ELEVATIONS	2/29/11
REVISE SHC INV. AT PL CHART AS REQUIRED	7/29/11
INDICATE & REVISE ADDITIONAL 8" X 14" MH# 703 - MH# 706	7/29/11
REVISE 8" INVERTS @ CROSSINGS/REVISE 8" CROSSING	4/9/11

SEWER MAIN PROFILE & CHARTS  
 600' SCALE MAP NO. 38 BLOCK NO. 15  
 F.C.C. WORK ORDER NO. 30728  
 FILE NAME: WATER AND SEWER MAIN PROFILES

CONTRACT NO. 14-4443-D  
 SLUSHER PROPERTY  
 LOTS 1 THRU 12 & OPEN SPACE LOTS 13 & 14  
 WATER AND SEWER MAIN EXTENSIONS  
 HOWARD COUNTY, MARYLAND

SCALE AS SHOWN  
 SHEET 3 OF 5



SEE WATER MAIN TABULATION CHART THIS SHEET

- WATER MAIN NOTES:**
1. FROM WM STA. 0+00.00 TO WM STA. 6+26.51, AWWA C900 PVC PIPE, PRESURE CLASS 2400, DR 14, SHALL BE UTILIZED FOR ALL WATER MAINS.
  2. ALL PIPE MATERIAL, INSTALLATION REQUIREMENTS & STANDARD DETAILS, INCLUDING PIPE BEDDING, TRACER WIRE, LOCATING TAPE & OTHER APPURTENANCES SHALL BE IN ACCORDANCE WITH THE HOWARD COUNTY DESIGN MANUAL VOLUMES II & IV, AS THEY PERTAIN TO THE INSTALLATION OF AWWA C900 PVC WATER PIPE.
  3. DEFLECTION COUPLINGS SHALL BE CERTAIN-TEED PVC HIGH DEFLECTION COUPLINGS.
  4. ALL WATER HOUSE CONNECTIONS & TAPS SHALL BE PERFORMED USING A SADDLE.

**PROFILE**  
SCALE: HORIZ. : 1" = 50'  
VERT. : 1" = 2'

**8" & 6" WATER MAIN: MILL RIVER COURT**

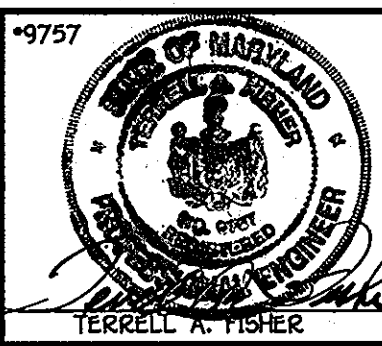
WATER MAIN TABULATION CHART			
WM. STA.	APPURTENANCE	NORTHING	EASTING
8" & 6" WATER MAIN: MILL RIVER COURT			
0+00.00	REMOVE EX. 8" PLUG & BUTTRESS & CONNECT TO EX. 8" W	557510.10	1391094.43
0+07.50	1/16 H.B.	557525.60	1391093.33
0+21.56	1/16 H.B.	557537.61	1391086.03
0+39.59	1/32 H.B.	557540.35	1391071.53
0+52.47	8"X6" TEE	557553.00	1391059.56
1+40.07	1/32 H.B.	557560.47	1391769.90
1+05.15	1/32 H.B.	557610.07	1391740.74
2+25.22	1/16 H.B.	557641.44	1391715.02
3+07.04	1/16 H.B.	557720.24	1391693.78
3+30.43	1/16 H.B.	557744.02	1391674.25
3+70.46	1/32 H.B.	557761.50	1391646.95
3+99.01	8"X6" TEE	557771.35	1391619.20
4+05.01	8"X6" REDUCER	557773.35	1391613.62
4+14.01	6" VALVE	557776.35	1391605.14
5+21.52	1/32 H.B.	557811.06	1391504.51
6+26.51	6" PLUG & BUTTRESS	557825.36	1391400.39

CONTRACT NO. 14-4443-D  
SLUSHER PROPERTY  
LOTS 1 THRU 12 & OPEN SPACE LOTS 13 & 14  
WATER AND SEWER MAIN EXTENSIONS  
HOWARD COUNTY, MARYLAND

DEPARTMENT OF PUBLIC WORKS  
HOWARD COUNTY, MARYLAND  
S. C. [Signature]  
CHIEF, BUREAU OF UTILITIES

DEPARTMENT OF PLANNING AND ZONING  
HOWARD COUNTY, MARYLAND  
[Signature]  
CHIEF, DEVELOPMENT ENGINEERING DIVISION

FISHER, COLLINS & CARTER, INC.  
CIVIL ENGINEERING CONSULTANTS & LAND SURVEYORS  
CENTENNIAL SQUARE OFFICE PARK - 10272 BALTIMORE NATIONAL FREE  
ELLSWORTH CITY, MARYLAND 21042  
4101 401 - 2200



DESIGNED BY: B.C.R.  
DRAWN BY: B.C.R.  
CHECKED BY: P.W.K.  
DATE: APRIL, 2009  
BY NO. [ ]

WATER MAIN  
PROFILE & CHART  
600' SCALE MAP NO. 30 BLOCK NO. 15  
F.C.C. WORK ORDER NO. 30728  
FILE NAME: WATER AND SEWER MAIN PROFILES

**SLUSHER PROPERTY**  
LOTS 1 THRU 12 & OPEN SPACE LOTS 13 & 14  
CONTRACT NO. 14-4443-D  
FIRST ELECTION DISTRICT  
HOWARD COUNTY, MARYLAND

SCALE  
AS  
SHOWN  
SHEET  
4 OF 5

K:\SDS\PROJ\310728 Greenspan\dwg\310728 Water And Sewer Base Plan.dwg, 4/3/2009 1:59:29 PM, bcrandor