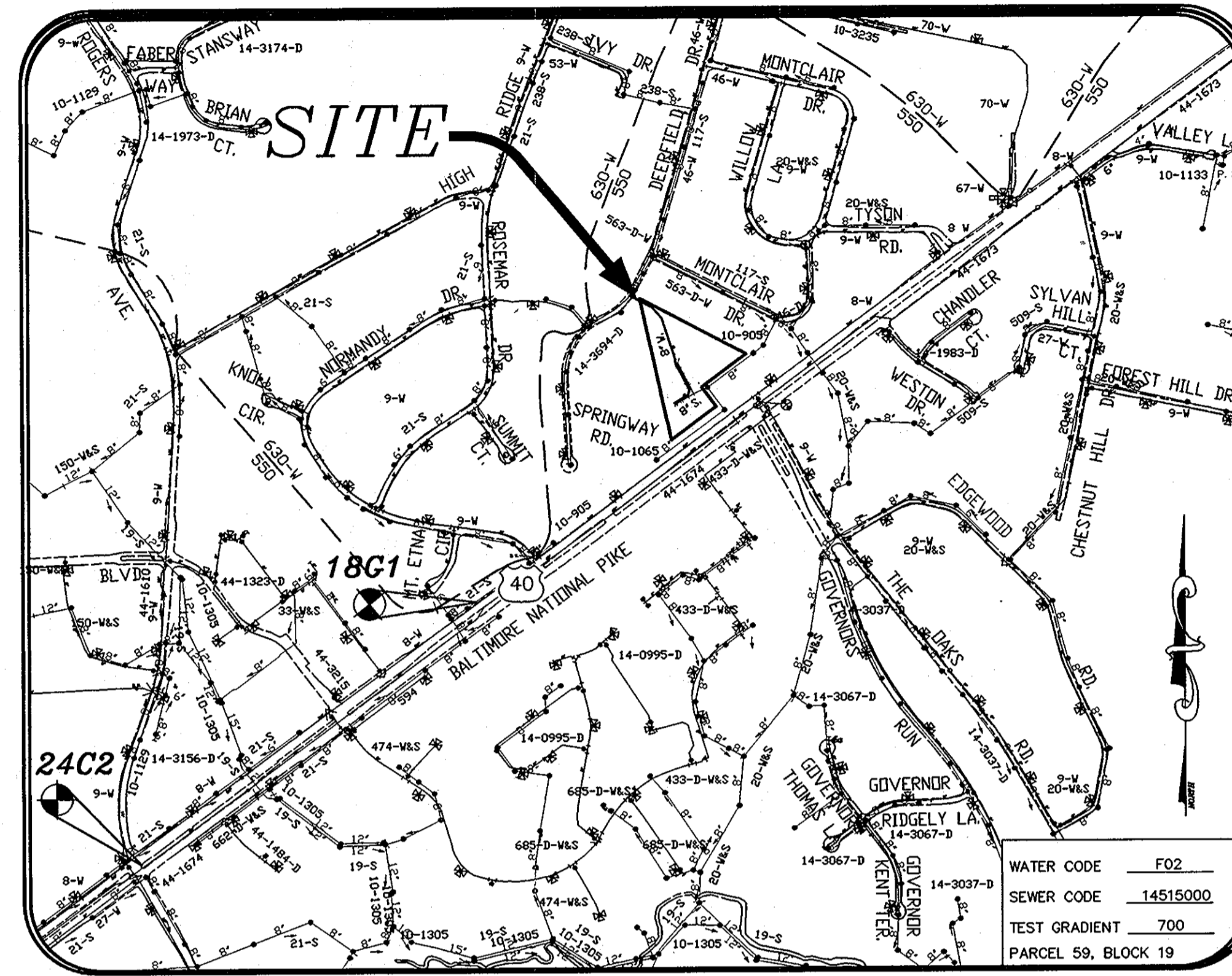


QUANTITY TABLE

ITEMS	QUANTITIES ESTIMATED	QUANTITIES	TYPE	MANUFACTURER/SUPPLIER
STANDARD MH (HO. CO. STD.G-5.01)	3 EACH	3 EACH	PRECAST	CONTRACTORS PRECAST CORP.
8" SEWER MAIN	331 L.F.	336 L.F.	8" PVC	NORTH AMERICAN PIPE CO.
4" SEWER HOUSE CONNECTION	107 L.F.	140 L.F.	4" PVC	NORTH AMERICAN PIPE CO.
# 4" SEWER HOUSE CONNECTIONS	8 EACH	8 EACH	PRECAST	PRISM PRECAST
8" x 8" TAPPING SLEEVE & VALVE	1 EACH	1 EACH	S.S.	ROMAC INDUSTRIES
8" WATER MAIN	778 L.F.	800 L.F.	D.I.	AMERICAN CAST IRON PIPE CO.
1" WATER HOUSE CONNECTION	130 L.F.	200 L.F.	1" SOFT K	MULLER INDUSTRIES/CERRO
# 1" WATER HOUSE CONNECTIONS	8 EACH	8 x 1"	SS SADDLE	MULLER COMPANY
8" CAP & BUTTRESS	1 EACH	1 EACH	D.I.	TYLER UNION/SIGMA
8" VALVE	1 EACH	1 EACH	8" NRS	MULLER COMPANY
NAME OF UTILITY CONTRACTOR: J & A				
SURVEY AND DRAFTING DIVISION AS-BUILT DATE				

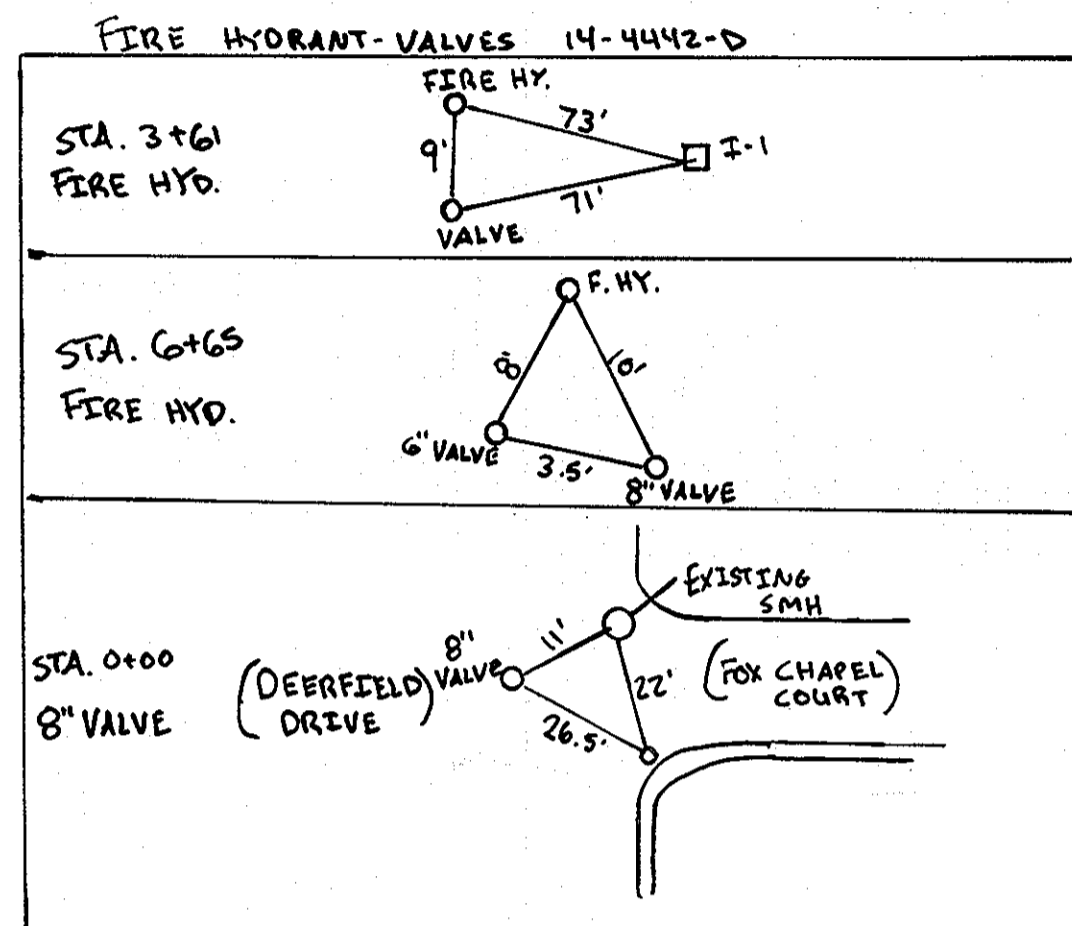
GENERAL NOTES

- APPROXIMATE LOCATIONS OF EXISTING MAINS ARE SHOWN. THE CONTRACTOR SHALL TAKE ALL NECESSARY PRECAUTIONS TO PROTECT EXISTING MAINS AND SERVICES AND MAINTAIN UNINTERRUPTED SERVICE. ANY DAMAGE INCURRED SHALL BE REPAIRED IMMEDIATELY TO THE SATISFACTION OF THE ENGINEER AT THE CONTRACTOR'S EXPENSE.
- TOPOGRAPHIC FIELD SURVEYS WERE PERFORMED ON FEBRUARY 2003 BY WINGS AERIAL MAPPING SUPPLEMENTED BY TOPOGRAPHIC SURVEY PERFORMED BY MILDENBERG BOENDER & ASSOCIATES IN AUGUST 2004.
- HORIZONTAL AND VERTICAL SURVEY CONTROLS:
THE COORDINATES SHOWN ON THE DRAWINGS ARE BASED ON MARYLAND STATE REFERENCE SYSTEM NAD '83/91 AS PROJECTED BY HOWARD COUNTY GEODETIC CONTROL STATIONS NO. 35G2 AND NO. 35GA. ALL VERTICAL CONTROLS ARE BASED ON NAVD '29. VERTICAL CONTROLS PROVIDED ON THE DRAWINGS ARE HO.CO. GEODETIC CONTROL STA. 35G2 & 35GA.
- ALL PIPE ELEVATIONS SHOWN ARE INVERT ELEVATIONS UNLESS OTHERWISE NOTED ON THE PLANS.
- CLEAR ALL UTILITIES BY A MINIMUM OF 12 INCHES. CLEAR ALL POLES BY 5'-0" MINIMUM OR TUNNEL AS REQUIRED UNLESS OTHERWISE NOTED. THE OWNER HAS CONTACTED THE UTILITY COMPANIES AND HAS MADE ARRANGEMENTS FOR BRACING OF POLES AS SHOWN ON THE DRAWINGS. IN THE EVENT THE CONTRACTOR'S WORK REQUIRES THE BRACING OF ADDITIONAL POLES, ANY COST INCURRED BY THE OWNER FOR THE BRACING OF ADDITIONAL POLES OR DAMAGES SHALL BE DEDUCTED FROM MONIES OWNED THE CONTRACTOR. THE CONTRACTOR SHALL COORDINATE WITH THE UTILITY COMPANIES TO SCHEDULE THE BRACING OF THE POLES. FOR DETAILS NOT SHOWN ON THE DRAWING, AND FOR MATERIALS AND CONSTRUCTION METHODS, USE HOWARD COUNTY DESIGN MANUAL, VOLUME IV, STANDARD SPECIFICATIONS AND DETAILS FOR CONSTRUCTION (LATEST EDITION). THE CONTRACTOR SHALL HAVE A COPY OF VOLUME IV ON THE JOB.
- WHERE TEST PITS HAVE BEEN MADE ON EXISTING UTILITIES, THEY ARE NOTED BY THE SYMBOL [] AT THE LOCATIONS OF THE TEST PITS. A NOTE OR NOTES CONTAINING THE RESULTS OF THE TEST PIT OR PITS IS INCLUDED ON THE DRAWINGS. EXISTING UTILITIES IN THE VICINITY OF THE PROPOSED WORK FOR WHICH TEST PITS HAVE NOT BEEN DUG SHALL BE LOCATED BY THE CONTRACTOR TWO WEEKS IN ADVANCE OF CONSTRUCTION OPERATIONS AT HIS OWN EXPENSE.
- THE CONTRACTOR SHALL NOTIFY THE FOLLOWING UTILITY COMPANIES OR AGENCIES AT LEAST FIVE WORKING DAYS BEFORE STARTING WORK SHOWN ON THESE PLANS:
AT&T1-800-252-1133
BGE(CONSTRUCTION SERVICES).....410-850-4620
BGE(EMERGENCY).....410-685-1400
BUREAU OF UTILITIES.....410-313-4900
COLONIAL PIPELINE CO.....410-795-1390
MISS UTILITY.....1-800-257-7777
STATE HIGHWAY ADMINISTRATION.....410-531-5533
VERIZON.....1-800-743-0033/410-224-9210
- TREES AND SHRUBS ARE TO BE PROTECTED FROM DAMAGE TO THE MAXIMUM EXTENT. TREES AND SHRUBS LOCATED WITHIN THE CONSTRUCTION STRIP ARE NOT TO BE REMOVED OR DAMAGED BY THE CONTRACTOR.
- THE CONTRACTOR SHALL REMOVE TREES, STUMPS AND ROOTS ALONG THE LINE OF EXCAVATION. PAYMENT FOR SUCH REMOVAL SHALL BE INCLUDED IN THE UNIT PRICE BID FOR CONSTRUCTION OF THE MAIN.
- THE CONTRACTOR SHALL NOTIFY THE BUREAU OF HIGHWAYS, HOWARD COUNTY, AT (410)313-7450 AT LEAST FIVE WORKING DAYS BEFORE OPEN CUTTING OR BORING/JACKING OF ANY COUNTY ROAD FOR LAYING WATER/SEWER MAINS OR HOUSE CONNECTIONS. THE APPROVAL OF THESE DRAWINGS WILL CONSTITUTE COMPLIANCE WITH DPW REQUIREMENTS PER SECTION 18.114(c) OF THE HOWARD COUNTY CODE.



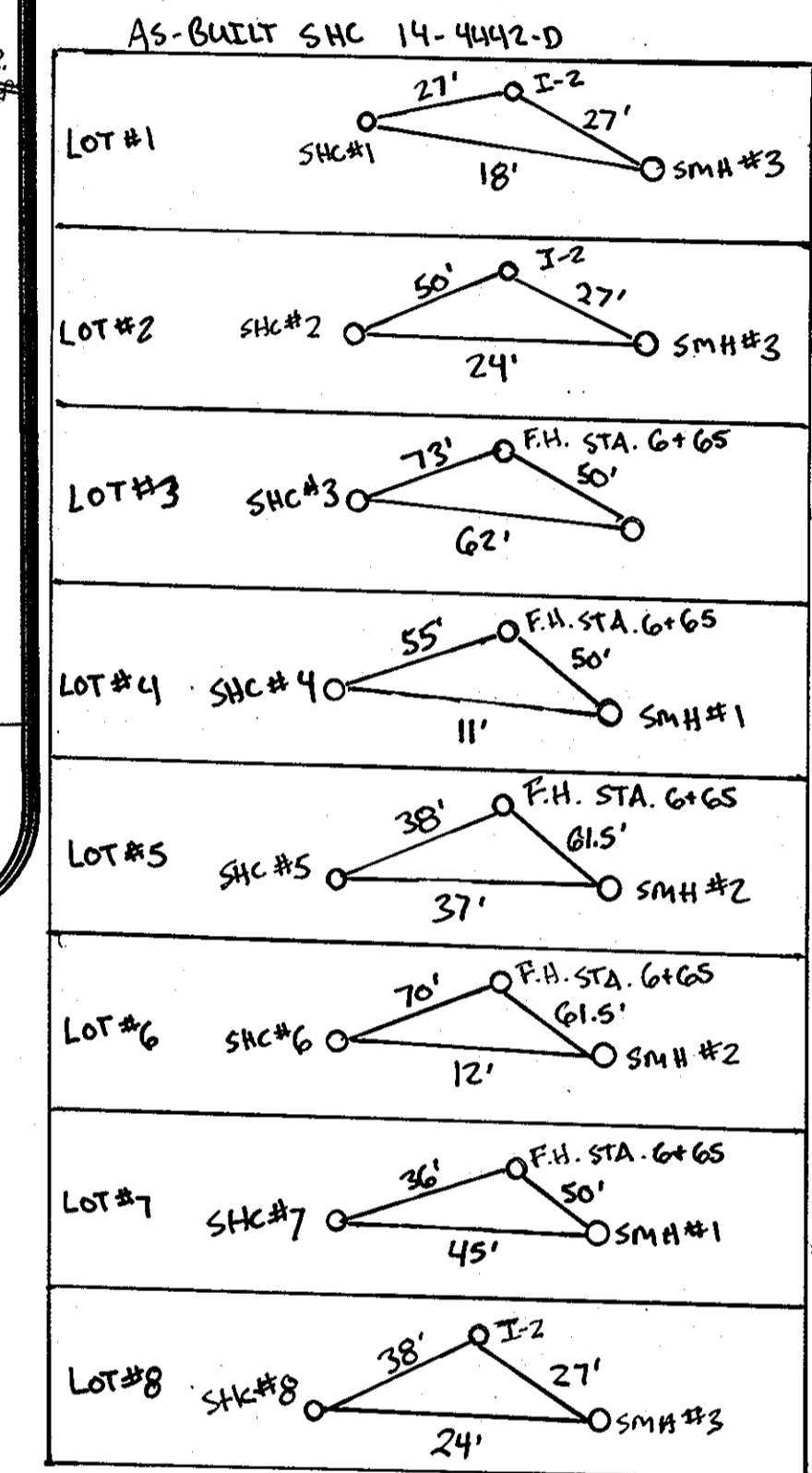
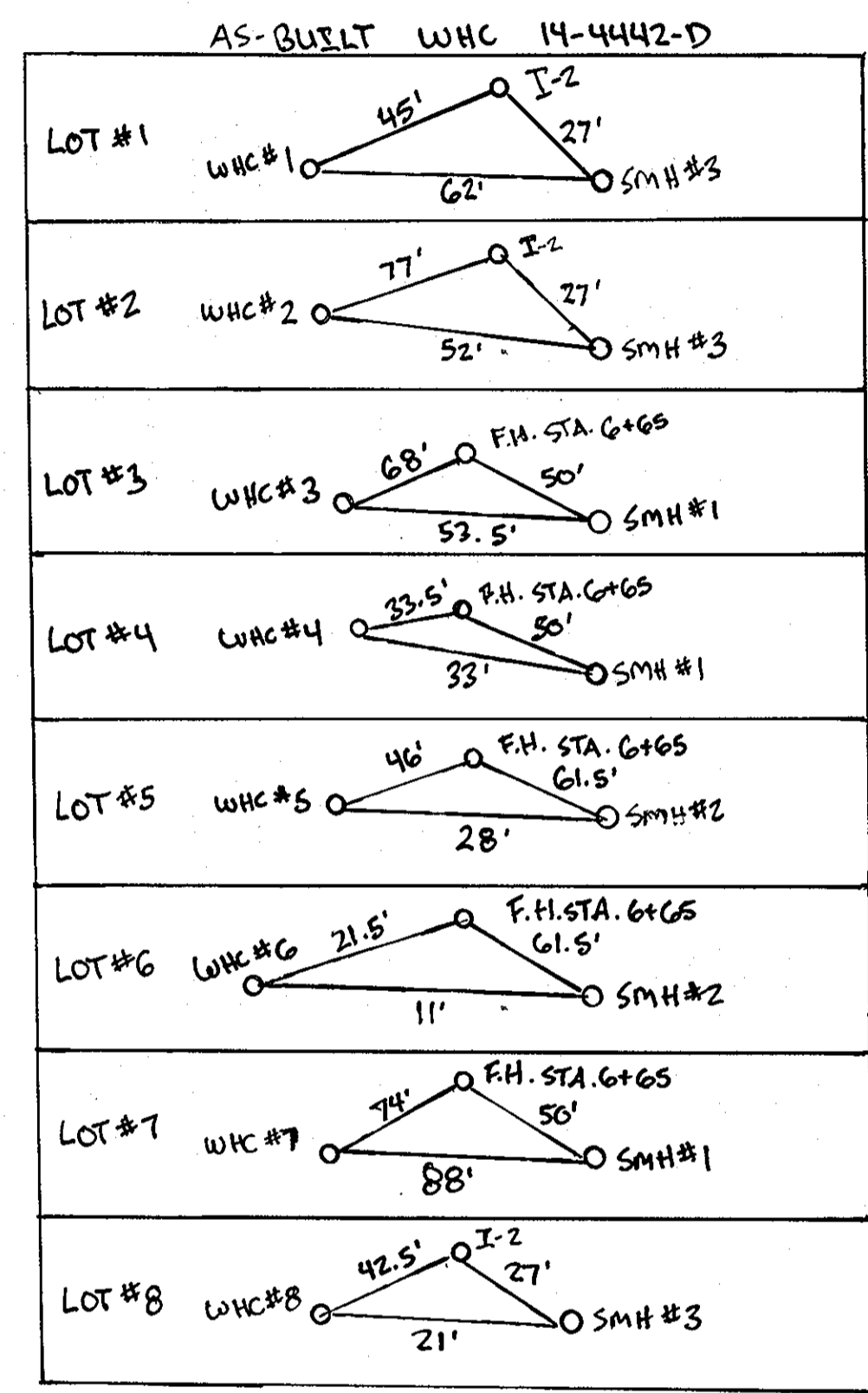
VICINITY MAP
SCALE 1"=600'

TYPE OF BUILDING	SFD
No. OF UNITS	8
No. OF WATER HOUSE CONNECTION	8
No. OF SEWER HOUSE CONNECTIONS	8
DRAINAGE AREA - PATAPSCO	
TREATMENT PLANT - PATAPSCO WWTP	



PLAN REFERENCE NUMBERS:
SP-02-10
F-07-075

EROSION AND SEDIMENT CONTROL FOR THIS CONTRACT IS PROVIDED UNDER F-07-075



CONTRACT NO.: 14-4442-D

SERIO ESTATES

LOTS 1-8 & OPEN SPACE LOTS 9 & 10

WATER AND SEWER MAIN EXTENSIONS

HOWARD COUNTY, MARYLAND

DEPARTMENT OF PUBLIC WORKS

I/WE CERTIFY THAT ALL DEVELOPMENT AND CONSTRUCTION WILL BE DONE ACCORDING TO THIS PLAN, AND THAT ANY RESPONSIBLE PERSONNEL INVOLVED IN THE CONSTRUCTION PROJECT WILL HAVE A CERTIFICATE OF ATTENDANCE AT A DEPARTMENT OF THE ENVIRONMENT APPROVED TRAINING PROGRAM FOR THE CONTROL OF SEDIMENT AND EROSION BEFORE BEGINNING THE PROJECT. I ALSO AUTHORIZE PERIODIC ON-SITE INSPECTION BY THE HOWARD SOIL CONSERVATION DISTRICT.

Vincent S. Serio 1/15/08
DEVELOPER'S SIGNATURE DATE

Vincent S. Serio
DEVELOPER'S NAME

I HEREBY CERTIFY THAT THIS PLAN FOR EROSION AND SEDIMENT CONTROL REPRESENTS A PRACTICAL AND WORKABLE PLAN BASED ON MY PERSONAL KNOWLEDGE OF THE SITE CONDITIONS AND THAT IT WAS PREPARED IN ACCORDANCE WITH THE REQUIREMENTS OF THE HOWARD SOIL CONSERVATION DISTRICT.

R. Jacob Hikmat 11/15/08
ENGINEER'S SIGNATURE DATE

R. JACOB HIKMAT
ENGINEER'S NAME

REVIEWED FOR HOWARD COUNTY AND MEETS TECHNICAL REQUIREMENTS.

John K. Robertson 1/31/08
DATE

OSDA-NATURAL RESOURCES CONSERVATION SERVICE

THIS DEVELOPMENT PLAN IS APPROVED FOR SOIL EROSION AND SEDIMENT CONTROL BY THE SOIL CONSERVATION DISTRICT.

John K. Robertson 1/31/08
DATE

I HEREBY CERTIFY THAT THESE DOCUMENTS WERE PREPARED OR APPROVED BY ME AND THAT I AM A DULY LICENSED PROFESSIONAL ENGINEER UNDER THE LAWS OF THE STATE OF MARYLAND, LICENSE No. 17942, EXP. DATE: SEPTEMBER 3, 2008.

DEPARTMENT OF PUBLIC WORKS
HOWARD COUNTY, MARYLAND

John C. Com
CHIEF, BUREAU OF UTILITIES

DEPARTMENT OF PLANNING & ZONING
HOWARD COUNTY, MARYLAND

Ali D. ... 2/6/08
CHIEF, DEVELOPMENT ENGINEERING DIVISION

MILDENBERG, BOENDER & ASSOC., INC.
Engineers Planners Surveyors
5072 Dorsey Hall Drive, Suite 202, Ellicott City, Maryland 21042
(410) 987-0296 Fax: (301) 821-5521 Wash. (410) 987-0298 Fax



engineering	JJO
illustration	JJO
approval	RJH
project	02-005
date	JAN 2008

TITLE SHEET

600' SCALE MAP NO. 18 BLOCK NO. 19

SERIO ESTATES
LOTS 1-8 & OPEN SPACE LOTS 9 & 10
CONTRACT NO.: 14-4442-D
SECOND ELECTION DISTRICT
HOWARD COUNTY, MARYLAND

