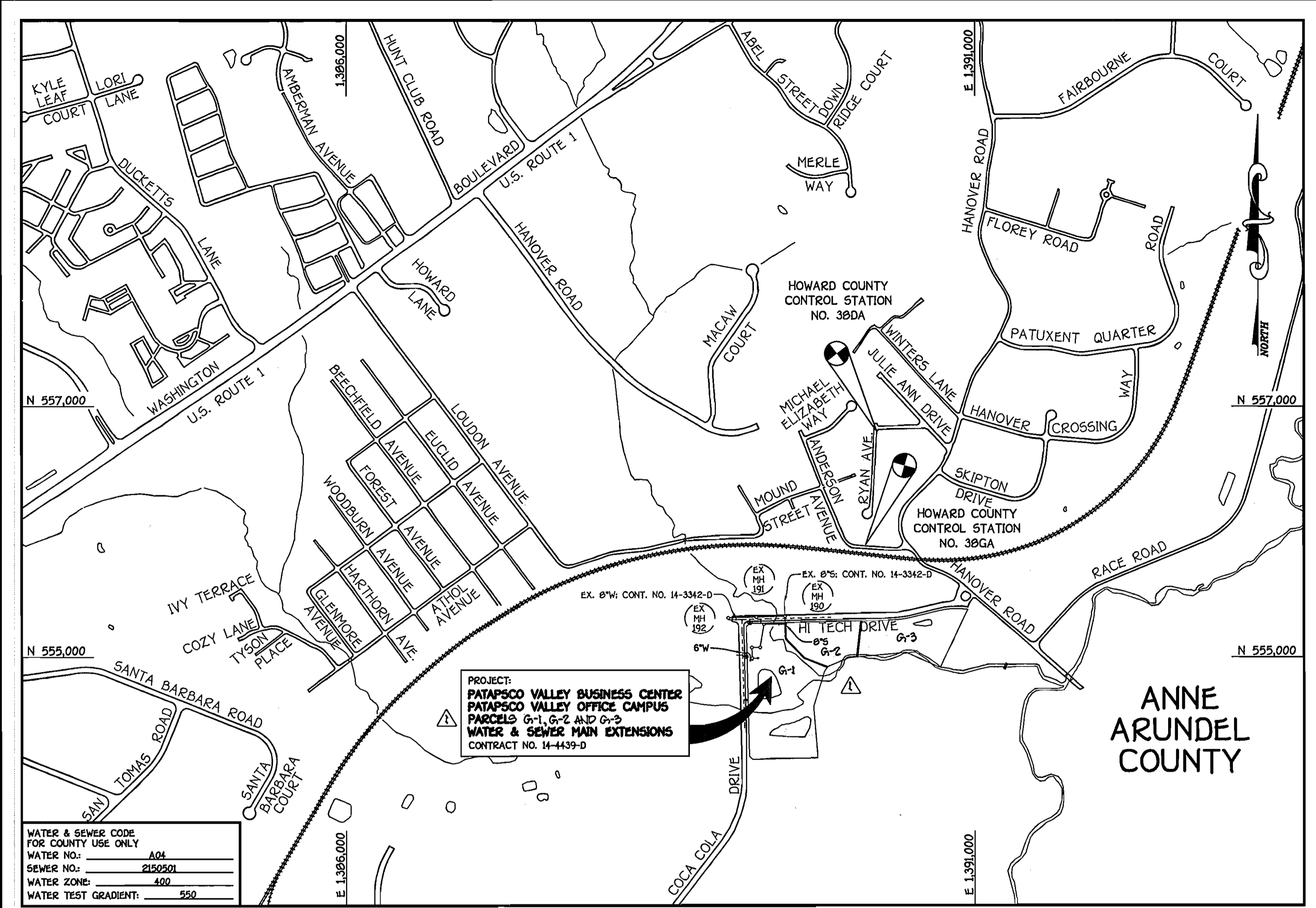


QUANTITIES				
ITEM	ESTIMATED	AS-BUILT		SUPPLIER
		QUANTITIES	TYPE	
6" WATER MAIN	34 L.F.	32 L.F.	CL. 52	GRIFIN PIPE
12"x6" TAPPING SLEEVE	1 EACH	1 EACH	STAINLESS	ROMAC INDUST.
6" TAPPING VALVE	1 EACH	1 EACH	RSGV O.R.	MUELLER CO.
6" PLUG & BUTTRESS	1 EACH	—	—	—
8" SEWER MAIN	11 L.F.	10 L.F.	PVC SDR-35	JM MFG./BRS
MANHOLES	1 EACH	1 EACH	SANITARY	ATLANTIC CONC.
CLEAN-OUTS	1 EACH	1 EACH	PVC SDR-35	JUMBO MFG. & JM MFG.

NAME OF UTILITY CONTRACTOR: CONSOLIDATED CONSTRUCTION SERVICES
 SURVEY & DRAFTING DIVISION AS-BUILT DATE: FEBRUARY 2008

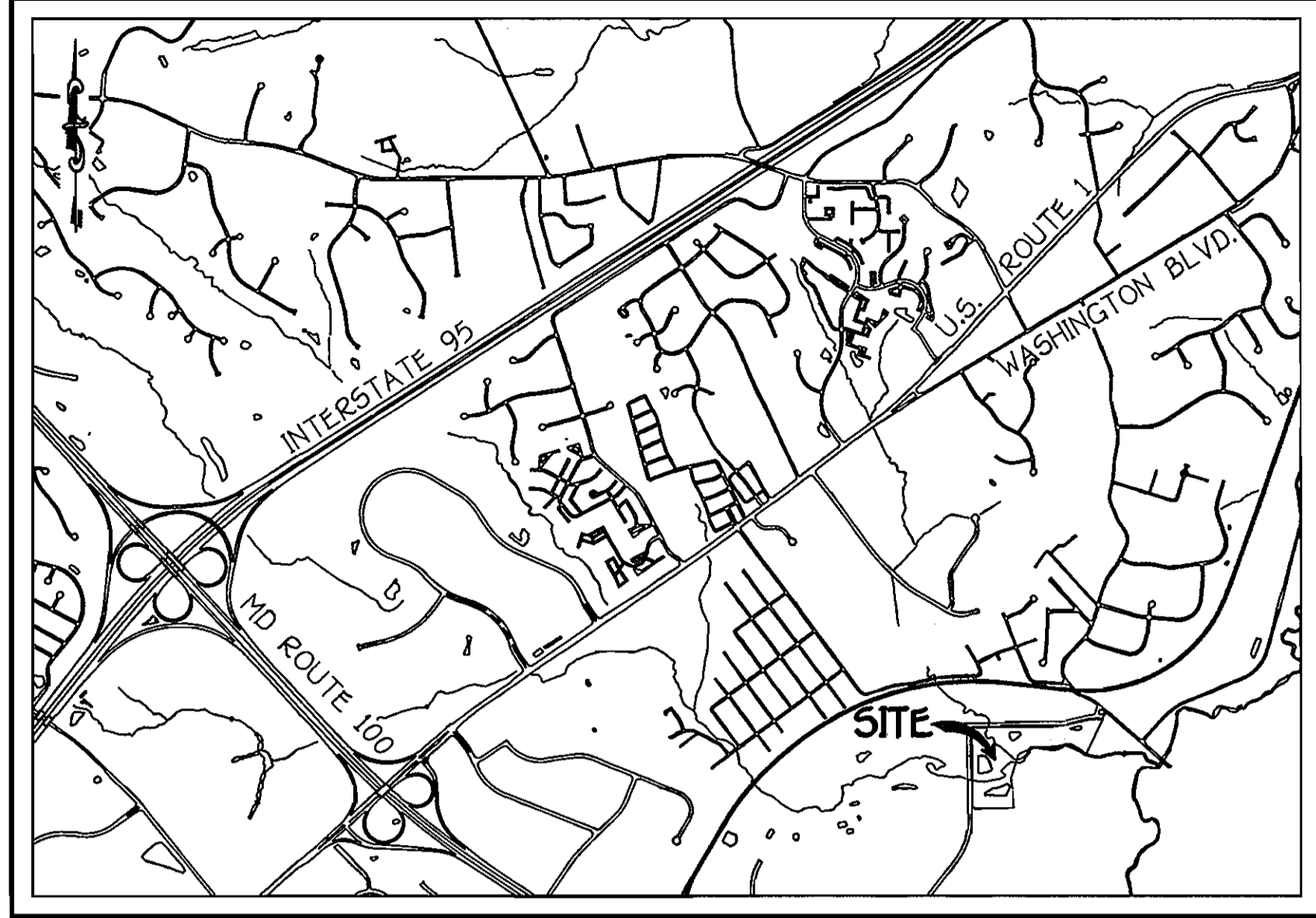


WATER & SEWER CODE FOR COUNTY USE ONLY	
WATER NO.:	AG4
SEWER NO.:	2150501
WATER ZONE:	400
WATER TEST GRADIENT:	550

TYPE OF BUILDING:	COMMERCIAL - GENERAL OFFICE
NUMBER OF PARCELS:	3 (3 BUILDABLE)
NO. OF WATER HOUSE CONNECTIONS:	0
NO. OF SEWER HOUSE CONNECTIONS:	0
DRAINAGE AREA:	PATAPSCO
TREATMENT PLANT:	PATAPSCO WASTEWATER TREATMENT PLANT, CITY OF BALTIMORE

VICINITY MAP
SCALE: 1" = 600'

PLAN REFERENCE NUMBERS: 50P-07-031



LOCATION MAP
SCALE: 1" = 2000'

PART I GENERAL NOTES

- APPROXIMATE LOCATIONS OF EXISTING MAINS ARE SHOWN. THE CONTRACTOR SHALL TAKE ALL NECESSARY PRECAUTIONS TO PROTECT EXISTING MAINS AND SERVICES AND MAINTAIN UNINTERRUPTED SERVICE. ANY DAMAGE INCURRED SHALL BE REPAIRED IMMEDIATELY TO THE SATISFACTION OF THE ENGINEER AT THE CONTRACTOR'S EXPENSE.
- TOPOGRAPHIC FIELD SURVEYS WERE PERFORMED ON OR ABOUT FEBRUARY, 2004 BY FISHER, COLLINS & CARTER, INC.
- HORIZONTAL AND VERTICAL CONTROLS: THE COORDINATES SHOWN ON THE DRAWINGS ARE BASED ON MARYLAND STATE REFERENCE SYSTEM NAD '83/91 AS PROJECTED BY HOWARD COUNTY GEODETIC CONTROL STATIONS NO. 38DA & NO. 38GA. SEE THIS SHEET FOR BENCHMARK INFORMATION.
- ALL PIPE ELEVATIONS SHOWN ARE INVERT ELEVATIONS UNLESS OTHERWISE NOTED ON THE PLANS.
- CLEAR ALL UTILITIES BY A MINIMUM OF 12 INCHES. CLEAR ALL POLES BY 5'-0" MINIMUM OR TUNNEL AS REQUIRED UNLESS OTHERWISE NOTED. THE OWNER HAS CONTACTED THE UTILITY COMPANIES AND HAS MADE ARRANGEMENTS FOR BRACING OF POLES AS SHOWN ON THE DRAWINGS. IN THE EVENT THE CONTRACTOR'S WORK REQUIRES BRACING OF ADDITIONAL POLES, ANY COST INCURRED BY THE OWNER FOR THE BRACING OF THE ADDITIONAL POLES OR DAMAGES SHALL BE DEDUCTED FROM MONIES OWED THE CONTRACTOR. THE CONTRACTOR SHALL COORDINATE WITH THE UTILITY COMPANIES TO SCHEDULE THE BRACING OF THE POLES.
- FOR DETAILS NOT SHOWN ON THE DRAWINGS, AND FOR MATERIALS AND CONSTRUCTION METHODS, USE HOWARD COUNTY DESIGN MANUAL, VOLUME IV, STANDARD SPECIFICATIONS AND DETAILS FOR CONSTRUCTION (LATEST EDITION). THE CONTRACTOR SHALL HAVE A COPY OF VOLUME IV ON THE JOB SITE.
- WHERE TEST PITS HAVE BEEN MADE ON EXISTING UTILITIES, THEY ARE NOTED BY THE SYMBOL (S) AT THE LOCATIONS OF THE TEST PITS. A NOTE OR NOTES CONTAINING THE RESULTS OF THE TEST PIT OR PITS IS INCLUDED ON THE DRAWINGS. EXISTING UTILITIES IN THE VICINITY OF THE PROPOSED WORK FOR WHICH TEST PITS HAVE NOT BEEN DUG SHALL BE LOCATED BY THE CONTRACTOR TWO WEEKS IN ADVANCE OF CONSTRUCTION OPERATIONS AT HIS OWN EXPENSE.
- THE CONTRACTOR SHALL NOTIFY THE FOLLOWING UTILITY COMPANIES OR AGENCIES AT LEAST FIVE WORKING DAYS BEFORE STARTING WORK SHOWN ON THESE PLANS:
 - AT&T 1-800-252-1333
 - BGE (CONSTRUCTION SERVICES) 410-850-1620
 - BGE (EMERGENCY) 410-685-1400
 - BUREAU OF UTILITIES 410-313-4900
 - COLONIAL PIPELINE CO. 410-795-1390
 - MESS UTILITY 1-800-257-7777
 - STATE HIGHWAY ADMINISTRATION 410-531-5533
 - VERIZON 1-800-743-0033/410-224-9210
- TREES AND SHRUBS ARE TO BE PROTECTED FROM DAMAGE TO THE MAXIMUM EXTENT. TREES AND SHRUBS LOCATED WITHIN THE CONSTRUCTION STRIP ARE NOT TO BE REMOVED OR DAMAGED BY THE CONTRACTOR.
- CONTRACTOR SHALL REMOVE TREES, STUMPS AND ROOTS ALONG THE LINE OF EXCAVATION. PAYMENT FOR SUCH REMOVAL SHALL BE INCLUDED IN THE UNIT PRICE BID FOR THE CONSTRUCTION OF THE MAIN.
- THE CONTRACTOR SHALL NOTIFY THE BUREAU OF HIGHWAYS, HOWARD COUNTY, AT (410)-313-7450 AT LEAST FIVE WORKING DAYS BEFORE OPEN CUTTING OR BORING/JACKING OF ANY COUNTY ROAD FOR LAYING WATER/SEWER MAINS OR HOUSE CONNECTIONS. THE APPROVAL OF THESE DRAWINGS WILL CONSTITUTE COMPLIANCE WITH DPW REQUIREMENTS PER SECTION 18.14(d) OF THE HOWARD COUNTY CODE.

PART II WATER

- ALL WATER MAINS SHALL BE D.I.P. CLASS 52 UNLESS OTHERWISE NOTED.
- TOPS OF ALL WATER MAINS SHALL HAVE A MINIMUM OF 3'-6" OF COVER UNLESS OTHERWISE NOTED.
- VALVES ADJACENT TO TEES SHALL BE STRAPPED TO TEES.
- ALL FITTINGS SHALL BE BUTTRESSED OR ANCHORED WITH CONCRETE IN ACCORDANCE WITH STANDARD DETAILS UNLESS OTHERWISE PROVIDED FOR ON THE DRAWINGS.
- FIRE HYDRANTS SHALL BE SET TO THE BURY LINE ELEVATIONS SHOWN ON THE DRAWINGS. ALL FIRE HYDRANTS SHALL BE INSTALLED IN ACCORDANCE WITH STANDARD DETAILS. THE SOIL AROUND THE FIRE HYDRANT SHALL BE COMPACTED IN ACCORDANCE WITH SECTION 1009 AND SECTION 1005 OF THE STANDARD SPECIFICATIONS.
- THE CONTRACTOR SHALL NOT OPERATE ANY WATER MAIN VALVES ON THE EXISTING WATER SYSTEM.

PART III SEWER

- ALL SEWER MAINS SHALL BE D.I.P. OR P.V.C. UNLESS OTHERWISE NOTED.
- ALL MANHOLES SHALL BE 4'-0" INSIDE DIAMETER UNLESS OTHERWISE NOTED.
- FORCE MAINS SHALL BE D.I.P. ONLY.
- MANHOLES SHOWN WITH 12" AND 16" WALLS ARE FOR BRICK MANHOLES ONLY.
- MANHOLES DESIGNATED W.T. IN PLAN AND PROFILE SHALL HAVE WATERTIGHT FRAME AND COVER, STANDARD DETAIL G5.52. WHERE WATERTIGHT MANHOLE FRAMES AND COVERS ARE USED, SET TOP OF FRAME 1'-6" ABOVE FINISHED GRADE UNLESS OTHERWISE NOTED ON THE DRAWINGS.
- HOUSES (S) WITH THE SYMBOL "C.N.S." INDICATES THAT THE CELLAR CANNOT BE SERVED.

BENCHMARK INFORMATION	
B.M.-1	- HOWARD COUNTY CONTROL STATION *38DA NAD '83 (APPROX. 20' SOUTH FROM THE INTERSECTION OF RYAN AVE. AND KRISTIN DR. LOCATED ON THE EAST SIDE OF RYAN DRIVE) N 555,795.3201 E 1,390,224.4773 ELEVATION = 126.145
B.M.-2	- HOWARD COUNTY CONTROL STATION *38GA NAD '83 (LOCATED ALONG THE NORTH SIDE OF LOUDON AVE. APPROX. 52.8' FROM BGE POLE *323644 AND 22.6' FROM CENTER OF LOUDON AVE.) N 555,897.3242 E 1,390,132.1176 ELEVATION = 90.853

DEVELOPER
 CSG PATAPSCO, LLC
 5024 CAMPBELL BOULEVARD
 WHITE MARSH, MARYLAND 21236

CONTRACT NO. 14-4439-D
 PATAPSCO VALLEY BUSINESS CENTER
 PATAPSCO VALLEY OFFICE CAMPUS
 PARCELS G-1, G-2 AND G-3
 FIRST ELECTION DISTRICT
 HOWARD COUNTY, MARYLAND

CONTRACT NO. 14-4439-D
 PATAPSCO VALLEY BUSINESS CENTER
PATAPSCO VALLEY OFFICE CAMPUS
 PARCELS G-1, G-2 AND G-3
 AS BUILT
 DATE: FEBRUARY 2008
 FIRST ELECTION DISTRICT
 HOWARD COUNTY, MARYLAND

REVIEWED FOR HOWARD COUNTY SOIL CONSERVATION DISTRICT AND MEETS TECHNICAL REQUIREMENTS.

Jim Meyers 3/8/07
 U.S.D.A. NATURAL RESOURCES CONSERVATION SERVICE

THIS DEVELOPMENT IS APPROVED FOR EROSION AND SEDIMENT CONTROL BY HOWARD COUNTY SOIL CONSERVATION DISTRICT.

APPROVED: *John L. Robertson* 3/8/07
 HOWARD COUNTY SOIL CONSERVATION DISTRICT

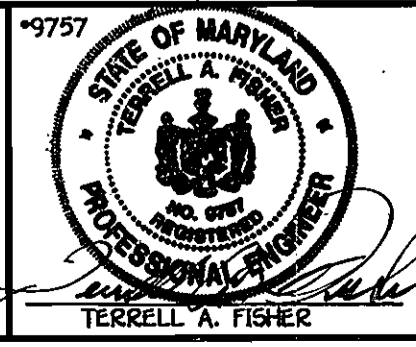
SEDIMENT CONTROL MEASURES FOR THIS CONTRACT WILL BE IMPLEMENTED IN ACCORDANCE WITH SECTION 219 OF THE HOWARD COUNTY DESIGN MANUAL & STANDARDS AND SPECIFICATIONS FOR SOIL EROSION AND SEDIMENT CONTROL IN DEVELOPING AREAS AND AS SHOWN ON 50P-07-031.

Paul W. Keibel FOR: CSG PATAPSCO, LLC 02/15/07
 SIGNATURE OF DEVELOPER DATE

DEPARTMENT OF PUBLIC WORKS
 HOWARD COUNTY, MARYLAND
Ruth A. Bunn 3-1-07
 CHIEF, BUREAU OF UTILITIES DATE

DEPARTMENT OF PLANNING AND ZONING
 HOWARD COUNTY, MARYLAND
W. D. Williams 3/2/07
 CHIEF, DEVELOPMENT ENGINEERING DIVISION DATE

FISHER, COLLINS & CARTER, INC.
 CIVIL ENGINEERING CONSULTANTS & LAND SURVEYORS
 10727 BALTIMORE NATIONAL PKWY
 ELICOTT CITY, MARYLAND 21046
 (410) 441-2222

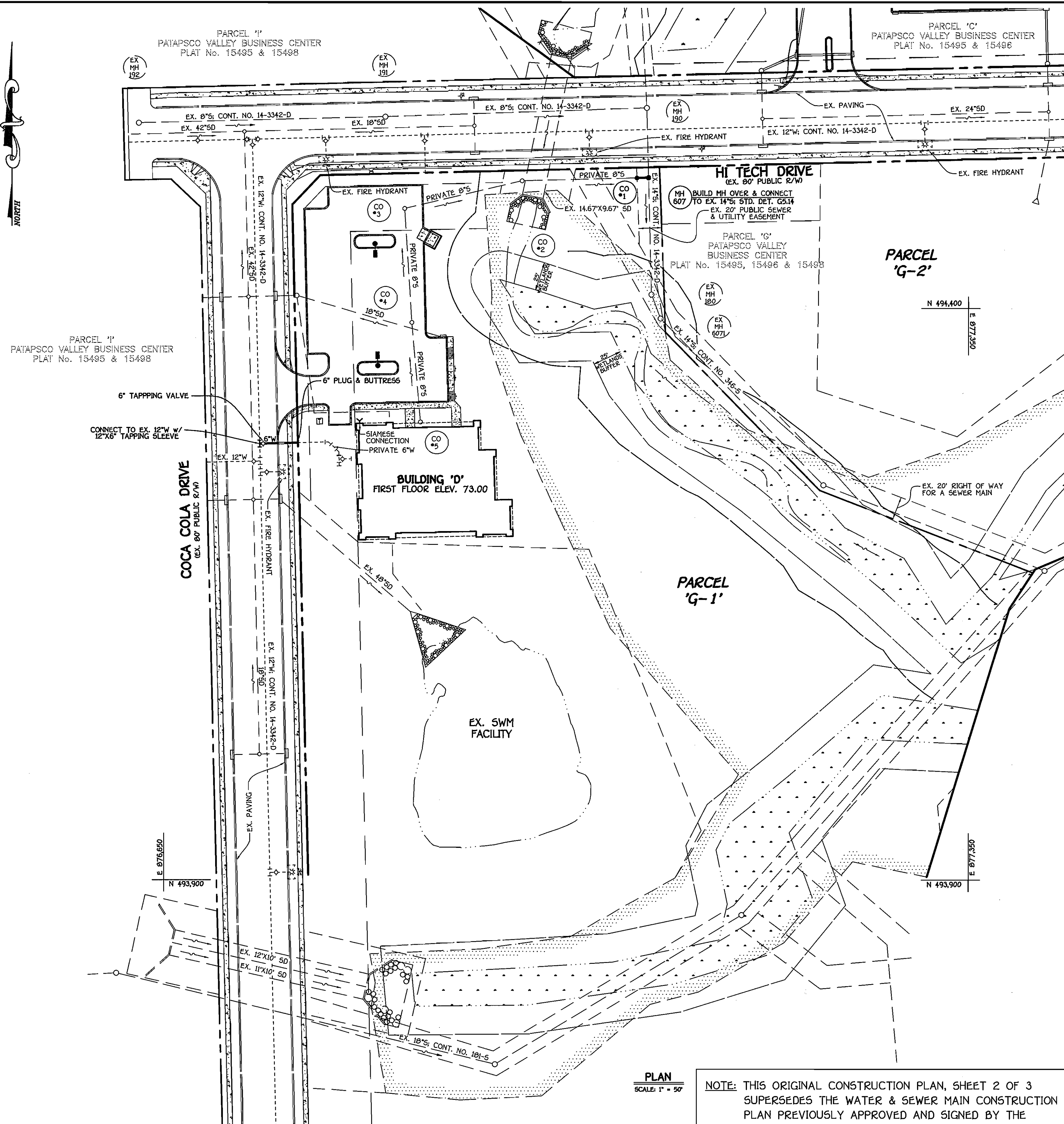


DESIGNED BY:	B.C.R.		
DRAWN BY:	B.C.R.		
CHECKED BY:	P.M.K.		
DATE:	FEBRUARY, 2007	DATE:	4/20/08
BY:	NO.	REVISION	DATE

WATER & SEWER MAIN EXTENSIONS TITLE SHEET	
600' SCALE MAP NO. 38	BLOCK NO. 20 & 21
F.C.C. WORK ORDER NO. 05003-5002	
FILE NAME:	WATER MAIN EXTENSION TITLE SHEET

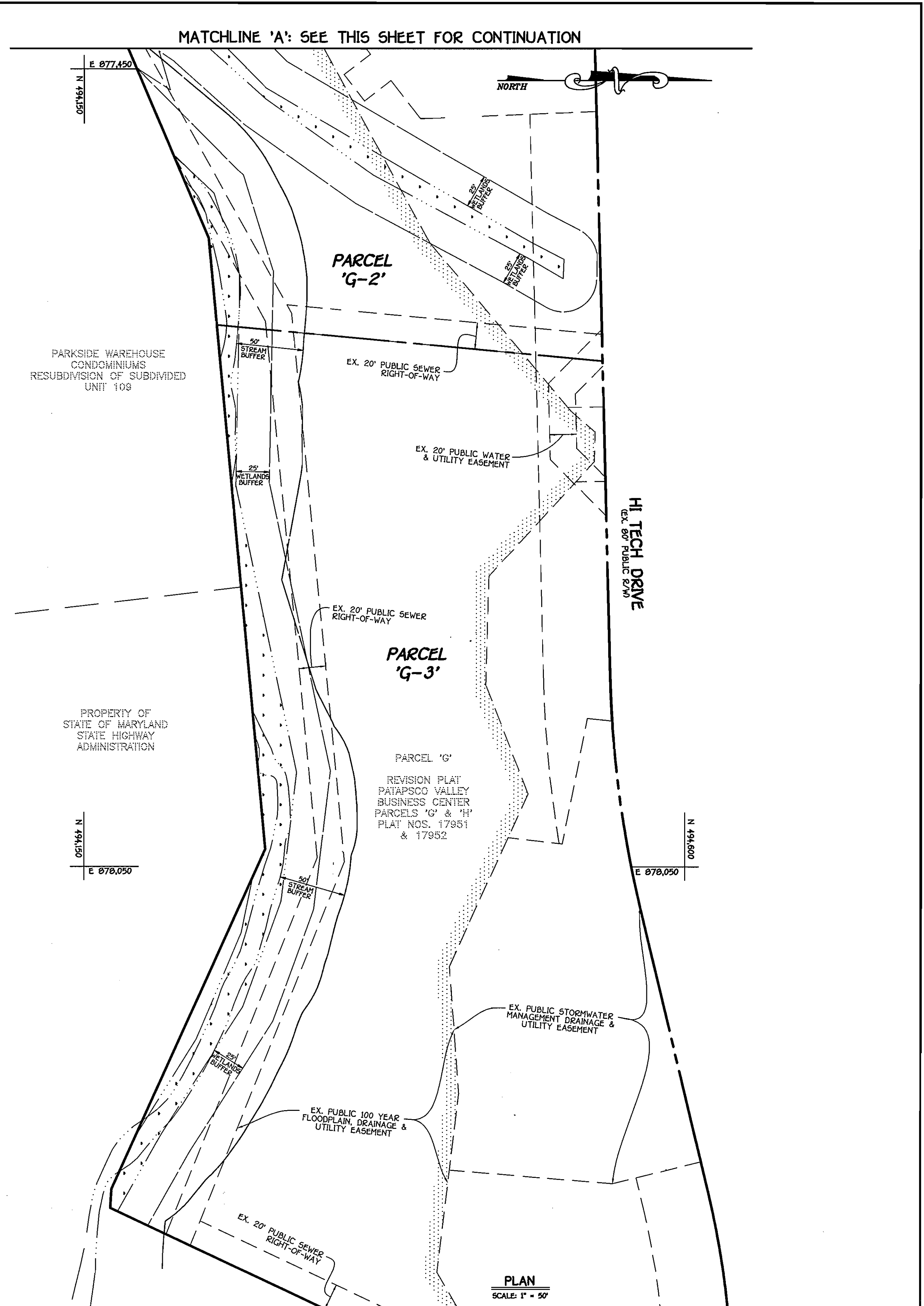
PATAPSCO VALLEY BUSINESS CENTER
 PATAPSCO VALLEY OFFICE CAMPUS
 PARCELS G-1, G-2 AND G-3
 CONTRACT NO. 14-4439-D
 FIRST ELECTION DISTRICT
 HOWARD COUNTY, MARYLAND

SCALE AS SHOWN
 SHEET 1 OF 3



PLAN
SCALE: 1" = 50'

NOTE: THIS ORIGINAL CONSTRUCTION PLAN, SHEET 2 OF 3 SUPERSEDES THE WATER & SEWER MAIN CONSTRUCTION PLAN PREVIOUSLY APPROVED AND SIGNED BY THE CHIEF OF THE DEVELOPMENT ENGINEERING DIVISION, DEPARTMENT OF PLANNING AND ZONING, ON MARCH 12, 2007.



PLAN
SCALE: 1" = 50'

NOTE: THIS ORIGINAL CONSTRUCTION PLAN, SHEET 2 OF 3 SUPERSEDES THE WATER & SEWER MAIN CONSTRUCTION PLAN PREVIOUSLY APPROVED AND SIGNED BY THE CHIEF OF THE DEVELOPMENT ENGINEERING DIVISION, DEPARTMENT OF PLANNING AND ZONING, ON MARCH 12, 2007.

DEPARTMENT OF PUBLIC WORKS
HOWARD COUNTY, MARYLAND

John C. Green
CHIEF, BUREAU OF UTILITIES

DEPARTMENT OF PLANNING AND ZONING
HOWARD COUNTY, MARYLAND

John A. Fisher
CHIEF, DEVELOPMENT ENGINEERING DIVISION

FISHER, COLLINS & CARTER, INC.
CIVIL ENGINEERING CONSULTANTS & LAND SURVEYORS
CENTRAL SQUARE OFFICE PARK - 10272 SALTPORE NATIONAL FREE
ELLSWORTH CITY, MARYLAND 21042
4100 463 - 2255

STATE OF MARYLAND
TERRELL A. FISHER
PROFESSIONAL ENGINEER
NO. 9781
REGISTERED

DESIGNED BY:	B.C.R.	DATE:	APRIL, 2009
DRAWN BY:	B.C.R.	BY:	NO.
CHECKED BY:	P.W.K.	REVISION:	

WATER & SEWER MAIN EXTENSIONS PLAN

600' SCALE MAP NO. 30 BLOCK NO. 20 & 21
F.C.C. WORK ORDER NO. 05003-6002
FILE NAME: WATER MAIN EXTENSION PLAN & PROFILE

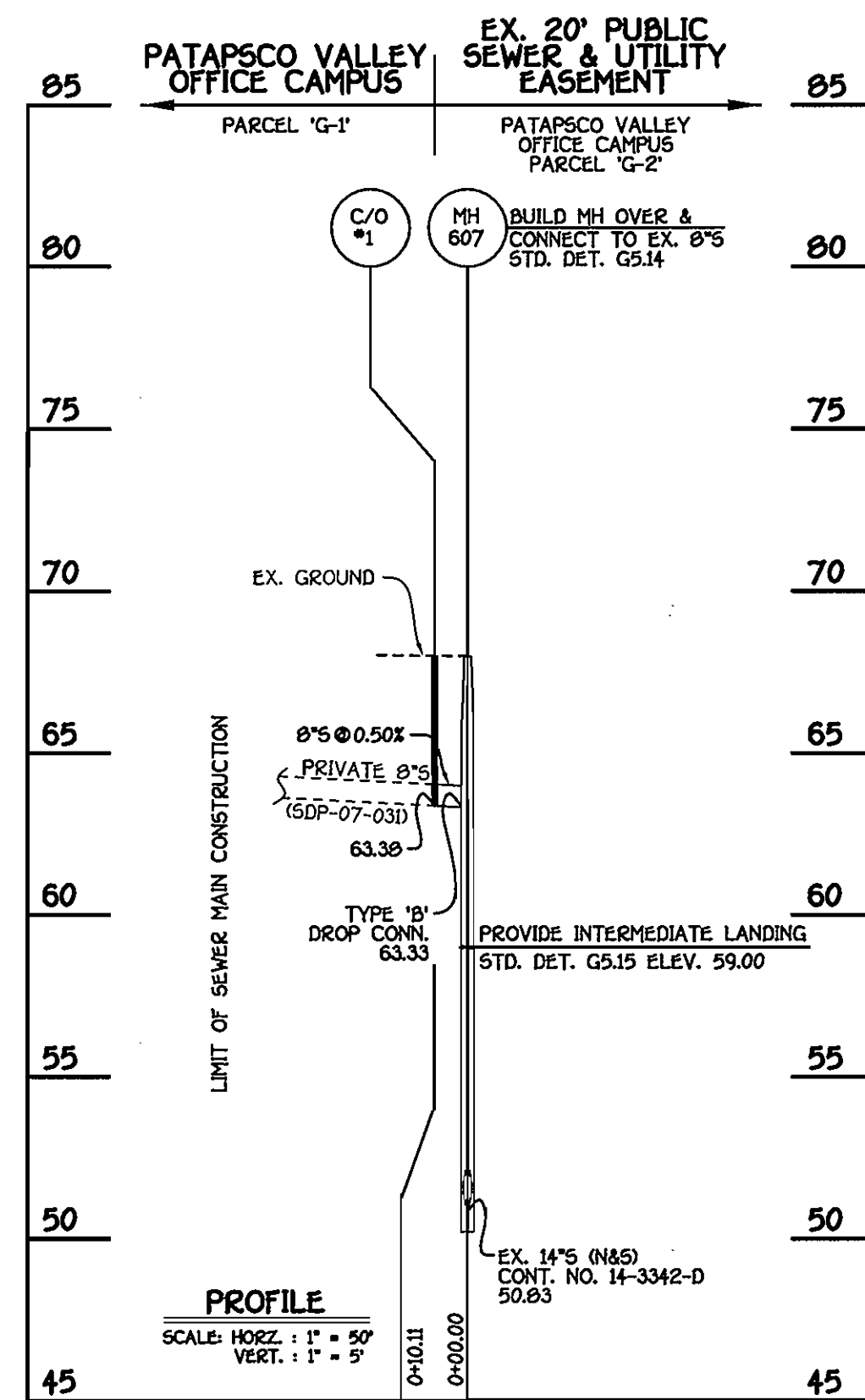
PATAPSCO VALLEY BUSINESS CENTER
PATAPSCO VALLEY OFFICE CAMPUS
PARCELS 'G-1', 'G-2' & 'G-3'

CONTRACT NO. 14-4439-D
FIRST ELECTION DISTRICT
HOWARD COUNTY, MARYLAND

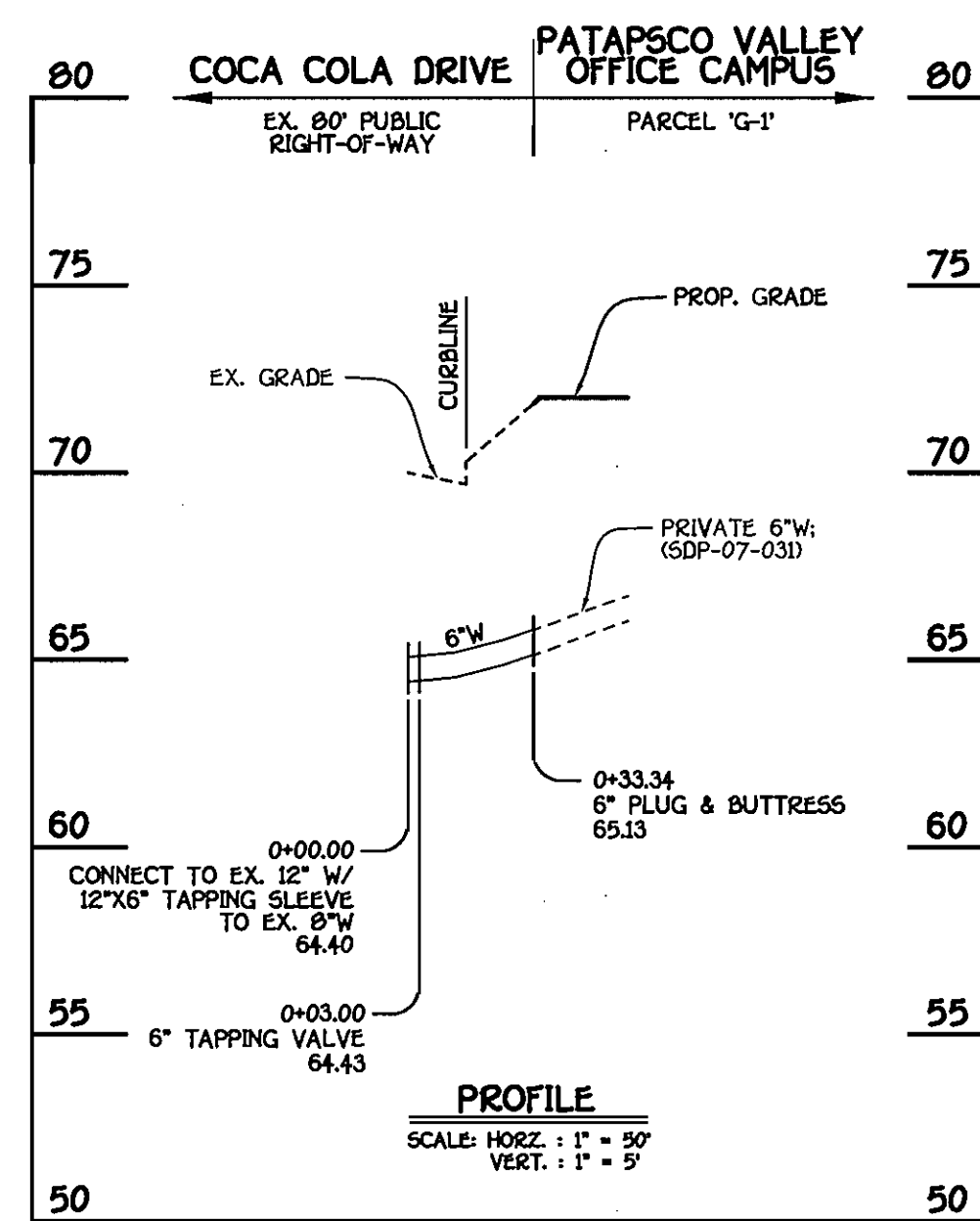
SCALE
AS
SHOWN

SHEET
2 OF 3

1:2009(06003)dwg(ENGINEERING) 06003-6002 Water And Sewer Base Plan Parcel 'G'.dwg - 4/17/2009 1:33:01 PM, Bardonr.



8" SEWER MAIN; BUILDING 'D'



6" WATER MAIN; BUILDING 'D'

MANHOLE TABULATION CHART			
NO.	NORTHING	EASTING	RIM ELEVATION
607	494514.40	877071.42	68.00
C/O #1	494514.15	877061.31	68.00

NOTE: SET MH RIM FLUSH W/EXISTING GROUND.

WATER MAIN TABULATION CHART			
W.M. STA.	APPURTENANCE	NORTHING	EASTING
6" WATER MAIN; BUILDING 'D'			
0+00.00	12"X6" TAPPING SLEEVE	494281.33	876733.22
0+03.00	6" TAPPING VALVE	494281.40	876736.22
0+33.34	6" PLUG & BUTTRESS	494282.15	876766.54

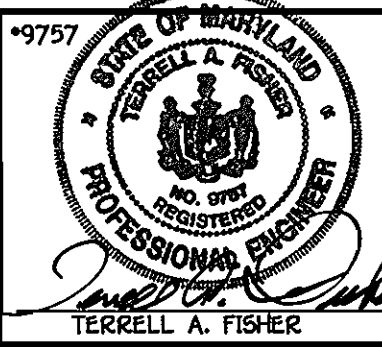
NOTE: THIS NEW CONSTRUCTION PLAN, SHEET 3 OF 3 HAS BEEN ADDED TO THE WATER & SEWER MAIN CONSTRUCTION PLAN PREVIOUSLY APPROVED AND SIGNED BY THE CHIEF OF THE DEVELOPMENT ENGINEERING DIVISION, DEPARTMENT OF PLANNING AND ZONING, ON MARCH 12, 2007.

CONTRACT NO. 14-4439-D
PATAPSCO VALLEY BUSINESS CENTER
PATAPSCO VALLEY OFFICE CAMPUS
PARCELS 'G-1', 'G-2' & 'G-3'
FIRST ELECTION DISTRICT
HOWARD COUNTY, MARYLAND

DEPARTMENT OF PUBLIC WORKS
HOWARD COUNTY, MARYLAND
Silvan C. Green
CHIEF, BUREAU OF UTILITIES
DATE: 5/1/09

DEPARTMENT OF PLANNING AND ZONING
HOWARD COUNTY, MARYLAND
John D. ...
CHIEF, DEVELOPMENT ENGINEERING DIVISION
DATE: 5/1/09

FISHER, COLLINS & CARTER, INC.
CIVIL ENGINEERING CONSULTANTS & LAND SURVEYORS
CENTENNIAL SQUARE OFFICE PARK - 10272 BALTIMORE NATIONAL PIKE
ELICOTT CITY, MARYLAND 21042
410.461.9292



DESIGNED BY: B.C.R.
DRAWN BY: B.C.R.
CHECKED BY: P.W.K.
DATE: APRIL, 2009
BY NO. REVISION DATE

WATER & SEWER MAIN EXTENSIONS
PROFILES
600' SCALE MAP NO. 38 BLOCK NO. 20 & 21
F.C.C. WORK ORDER NO. 06003-6002
FILE NAME: WATER MAIN EXTENSION PLAN & PROFILE

PATAPSCO VALLEY BUSINESS CENTER
PATAPSCO VALLEY OFFICE CAMPUS
PARCELS 'G-1', 'G-2' & 'G-3'
CONTRACT NO. 14-4439-D
FIRST ELECTION DISTRICT
HOWARD COUNTY, MARYLAND

SCALE AS SHOWN
SHEET 3 OF 3