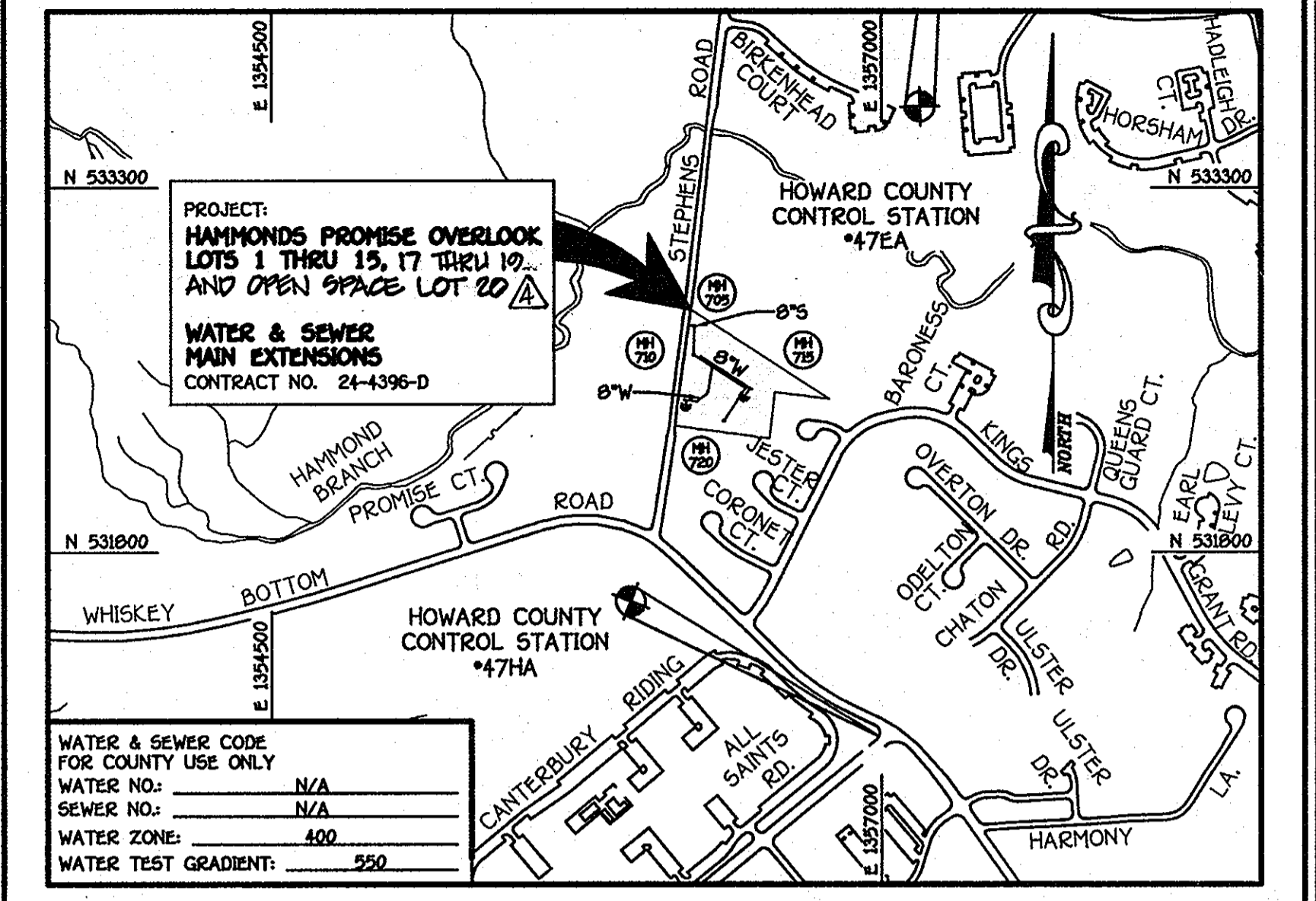
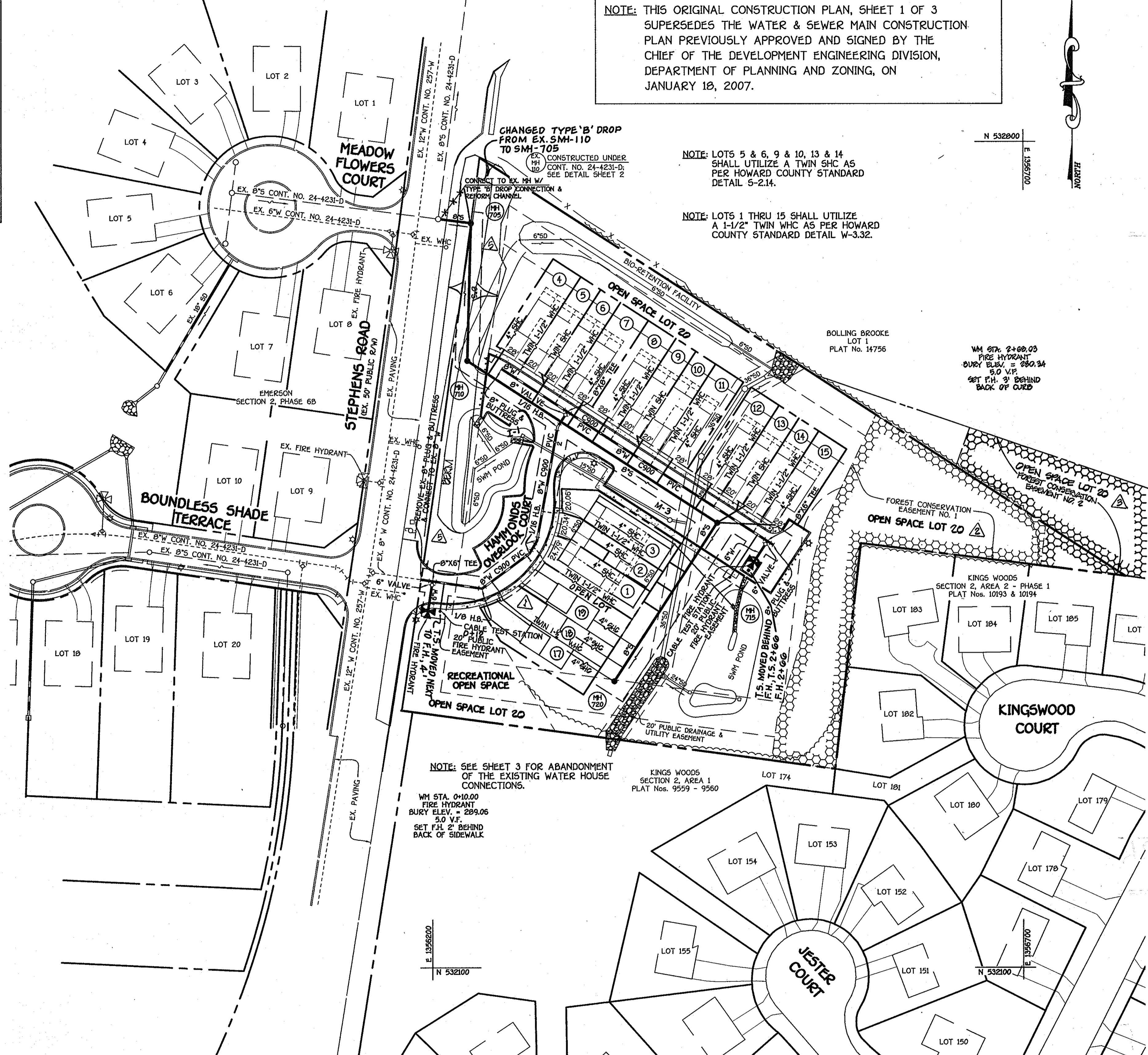


QUANTITIES				
ITEM	ESTIMATED	AS-BUILT	QUANTITIES	SUPPLIER
8" S	597 L.F.	538 L.F.	SDR-35 PVC	B.R.S.
6" S	97 L.F.	53 L.F.	SDR-35 PVC	B.R.S.
4" S	267 L.F.	304 L.F.	SDR-35 PVC	B.R.S.
MANHOLES	4 EACH	4 EA.	ASTM C-478	FREDERICK PREST
8" WATERC900	503 L.F.	502 L.F.	DR-18 PVC	B.R.S.
6" WATERC900	47 L.F.	47 L.F.	DR-18 PVC	B.R.S.
1-1/2" WATER	143 L.F.	115.5 L.F.	K-COPPER	B.R.S.
8" VALVE	1 EACH	1 EA.	GATE VALVE	B.R.S.
6" VALVE	2 EACH	2 EA.	GATE VALVE	B.R.S.
8" X 8" TEE	1 EACH	1 EA.	M.J.	B.R.S.
8" X 6" TEE	2 EACH	2 EA.	M.J.	B.R.S.
1/8" H.B.	1 EACH	1 EA.	M.J.	B.R.S.
1/16" H.B.	3 EACH	3 EA.	M.J.	B.R.S.
8" PLUG & BUTTRESS	2 EACH	2 EA.	M.J.	B.R.S.
FIRE HYDRANT	2 EACH	2 EA.	MUELLER	B.R.S.
CABLE TEST STATION	2 EACH	2 EA.	CONCRETE	B.R.S.

B.R.S. = BELAIR ROAD SUPPLY

NOTE: THIS ORIGINAL CONSTRUCTION PLAN, SHEET 1 OF 3 SUPERSEDES THE WATER & SEWER MAIN CONSTRUCTION PLAN PREVIOUSLY APPROVED AND SIGNED BY THE CHIEF OF THE DEVELOPMENT ENGINEERING DIVISION, DEPARTMENT OF PLANNING AND ZONING, ON JANUARY 18, 2007.



TYPE OF BUILDING: RESIDENTIAL TOWNHOUSE CONDOMINIUMS NUMBER OF LOTS: 12 (12) BUILDABLE NO. OF WATER HOUSE CONNECTIONS: 12 NO. OF SEWER HOUSE CONNECTIONS: 12 DRAINAGE AREA: LITTLE PATUXENT TREATMENT PLANT: LITTLE PATUXENT WATER RECLAMATION CENTER	VICINITY MAP SCALE: 1" = 600' BENCHMARK INFORMATION B.M. #1 - HOWARD COUNTY CONTROL STATION #47EA N 535063.67 (NAD '83) E 1357294.01 (NAD '83) ELEV = 208.43 (NAVD '88) B.M. #2 - HOWARD COUNTY CONTROL STATION #47HA N 531046.905 (NAD '83) E 1356987.631 (NAD '83) ELEV = 292.309 (NAVD '88)
--	--

GENERAL NOTES

- PART A**
- APPROXIMATE LOCATIONS OF EXISTING MAINS ARE SHOWN. THE CONTRACTOR SHALL TAKE ALL NECESSARY PRECAUTIONS TO PROTECT EXISTING MAINS AND SERVICES AND MAINTAIN UNINTERRUPTED SERVICE. ANY DAMAGE INCURRED SHALL BE REPAIRED IMMEDIATELY TO THE SATISFACTION OF THE ENGINEER AT THE CONTRACTOR'S EXPENSE.
 - TOPOGRAPHIC FIELD SURVEYS WERE PERFORMED ON OR ABOUT SEPTEMBER, 2005 BY FISHER, COLLINS & CARTER, INC.
 - THE COORDINATES SHOWN ON THE DRAWINGS ARE BASED ON MARYLAND STATE REFERENCE SYSTEM NAD '83 & NAVD '88 AS PROJECTED BY HOWARD COUNTY CONTROL STATION NO. 47EA & 47HA.
 - ALL VERTICAL CONTROLS ARE BASED ON NAVD '88. VERTICAL CONTROLS PROVIDED ON THE DRAWINGS.
 - ALL PIPE ELEVATIONS SHOWN ARE INVERT ELEVATIONS UNLESS OTHERWISE NOTED ON THE PLANS.
 - CLEAR ALL UTILITIES BY A MINIMUM OF 12 INCHES. CLEAR ALL POLES BY 5'-0" MINIMUM OR TUNNEL AS REQUIRED UNLESS OTHERWISE NOTED. THE OWNER SHALL NOTIFY THE UTILITY COMPANIES AND HAS MADE ARRANGEMENTS FOR BRACING OF POLES AS SHOWN ON THE DRAWINGS. IN THE EVENT THE CONTRACTOR'S WORK REQUIRES BRACING OF ADDITIONAL POLES, ANY COST INCURRED BY THE OWNER FOR THE BRACING OF THE ADDITIONAL POLES OR DAMAGES SHALL BE DEDUCTED FROM MONIES OWED THE CONTRACTOR. THE CONTRACTOR SHALL COORDINATE WITH THE UTILITY COMPANIES TO SCHEDULE THE BRACING OF THE POLES.
 - FOR DETAILS NOT SHOWN ON THE DRAWINGS, AND FOR MATERIALS AND CONSTRUCTION METHODS, USE HOWARD COUNTY DESIGN MANUAL, VOLUME IV, STANDARD SPECIFICATIONS AND DETAILS FOR CONSTRUCTION LATEST EDITION. THE CONTRACTOR SHALL HAVE A COPY OF VOLUME IV ON THE JOB SITE.
 - WHERE TEST PITS HAVE BEEN MADE ON EXISTING UTILITIES, THEY ARE NOTED BY THE SYMBOL (P) AT THE LOCATIONS OF THE TEST PITS. A NOTE OR NOTES CONTAINING THE RESULTS OF THE TEST PIT OR PITS IS INCLUDED ON THE DRAWINGS. EXISTING UTILITIES IN THE VICINITY OF THE PROPOSED WORK FOR WHICH TEST PITS HAVE NOT BEEN DUG SHALL BE LOCATED BY THE CONTRACTOR TWO WEEKS IN ADVANCE OF CONSTRUCTION OPERATIONS AT HIS OWN EXPENSE.
 - THE CONTRACTOR SHALL NOTIFY THE FOLLOWING UTILITY COMPANIES OR AGENCIES AT LEAST FIVE WORKING DAYS BEFORE STARTING WORK SHOWN ON THESE PLANS:
 - AT&T (1-800-252-1133)
 - BCE (CONSTRUCTION SERVICES) (410-850-4820)
 - BCE (EMERGENCY) (410-695-1400)
 - BUREAU OF UTILITIES (410-313-4900)
 - COLONIAL PIPELINE CO (410-795-1390)
 - MESS UTILITY (410-313-4900)
 - STATE HIGHWAY ADMINISTRATION (410-531-5533)
 - VERIZON (1-800-743-0033/410-224-9210)
 - TREES AND SHRUBS ARE TO BE PROTECTED FROM DAMAGE TO THE MAXIMUM EXTENT. TREES AND SHRUBS LOCATED WITHIN THE CONSTRUCTION STRIP ARE NOT TO BE REMOVED OR DAMAGED BY THE CONTRACTOR.
 - CONTRACTOR SHALL REMOVE TREES, STUMPS AND ROOTS ALONG THE LINE OF EXCAVATION. PAYMENT FOR SUCH REMOVAL SHALL BE INCLUDED IN THE UNIT PRICE BID FOR THE CONSTRUCTION OF THE MAIN.
 - THE CONTRACTOR SHALL NOTIFY THE BUREAU OF HIGHWAYS, HOWARD COUNTY, AT (410-313-7450) AT LEAST FIVE WORKING DAYS BEFORE OPEN CUTTING OR BORING/JACKING OF ANY COUNTY ROAD FOR LAYING WATER/SEWER MAINS OR HOUSE CONNECTIONS. THE APPROVAL OF THESE DRAWINGS WILL CONSTITUTE COMPLIANCE WITH DPW REQUIREMENTS PER SECTION 181.14(d) OF THE HOWARD COUNTY CODE.
- PART B: WATER MAIN GENERAL NOTES**
- ALL WATER MAINS SHALL BE AWWA C900 PVC PIPE.
 - TOPS OF ALL WATER MAINS SHALL HAVE A MINIMUM OF 3'-6" OF COVER UNLESS OTHERWISE NOTED.
 - VALVES ADJACENT TO TREES SHALL BE STRAPPED TO TREES.
 - ALL FITTINGS SHALL BE BUTTRESSED OR ANCHORED WITH CONCRETE IN ACCORDANCE WITH STANDARD DETAILS UNLESS OTHERWISE PROVIDED FOR ON THE DRAWINGS.
 - FIRE HYDRANTS SHALL BE SET TO THE BURY LINE ELEVATIONS SHOWN ON THE DRAWINGS. ALL FIRE HYDRANTS SHALL BE RESTRAINED AND BUTTRESSED WITH CONCRETE IN ACCORDANCE WITH THE STANDARD DETAILS. THE SOIL AROUND THE FIRE HYDRANT SHALL BE COMPACTED IN ACCORDANCE WITH SECTION 1000 AND SECTION 1005 OF THE STANDARD SPECIFICATIONS.
 - THE CONTRACTOR SHALL NOT OPERATE ANY WATER MAIN VALVES ON THE EXISTING WATER SYSTEM.
 - ALL WATER HOUSE CONNECTIONS SHALL BE FOR INSIDE METER SETTING UNLESS OTHERWISE NOTED ON THE PLANS OR IN THE SPECIFICATIONS.
 - SPRINKLER SYSTEMS FOR TOWNHOUSES SHALL HAVE A 1-1/2" MHC WITH A 1" OUTSIDE METER SETTING. TWIN 1" OUTSIDE METER SETTINGS SHALL BE IN ACCORDANCE WITH STD. DET. W-3.32.
- PART C: SEWER MAIN GENERAL NOTES**
- ALL SEWER MAINS SHALL BE D.I.P. OR P.V.C. UNLESS OTHERWISE NOTED.
 - ALL MANHOLES SHALL BE 4'-0" INSIDE DIAMETER UNLESS OTHERWISE NOTED.
 - FORCE MAINS SHALL BE D.I.P. ONLY.
 - MANHOLES SHOWN WITH 12" AND 16" WALLS ARE FOR BRICK MANHOLES ONLY.
 - MANHOLES DESIGNATED W.T. IN PLAN AND PROFILE SHALL HAVE WATERTIGHT FRAME AND COVER, STANDARD DETAIL G5.52. WHERE WATERTIGHT MANHOLE FRAMES AND COVERS ARE USED, SET TOP OF FRAME 1'-6" ABOVE FINISHED GRADE UNLESS OTHERWISE NOTED ON THE DRAWINGS.
 - HOUSES WITH THE SYMBOL "C.N.S." INDICATES THAT CELLAR CANNOT BE SERVED.

DEVELOPER'S CERTIFICATION

I HEREBY CERTIFY THAT ALL DEVELOPMENT AND CONSTRUCTION WILL BE DONE ACCORDING TO THIS PLAN OF DEVELOPMENT AND PLAN FOR EROSION AND SEDIMENT CONTROL AND THAT ALL RESPONSIBLE PERSONNEL INVOLVED IN THE CONSTRUCTION PROJECT WILL HAVE A CERTIFICATE OF ATTENDANCE AT THE DEPARTMENT OF THE ENVIRONMENT APPROVED TRAINING PROGRAM FOR THE CONTROL OF SEDIMENT AND EROSION BEFORE BEGINNING THE PROJECT. I ALSO AUTHORIZE PERIODIC ON-SITE INSPECTION BY THE HOWARD SOIL CONSERVATION DISTRICT OR THEIR AUTHORIZED AGENTS, AS ARE DEEMED NECESSARY.

[Signature] 7/16/09
SIGNATURE OF DEVELOPER DATE

ENGINEER'S CERTIFICATION

I HEREBY CERTIFY THAT THIS PLAN FOR EROSION AND SEDIMENT CONTROL REPRESENTS A PRACTICAL AND WORKABLE PLAN BASED ON MY PERSONAL KNOWLEDGE OF THE SITE CONDITIONS AND THAT IT WAS PREPARED IN ACCORDANCE WITH THE REQUIREMENTS OF THE HOWARD SOIL CONSERVATION DISTRICT.

[Signature] 07/16/09
SIGNATURE OF ENGINEER DATE

SEDIMENT CONTROL MEASURES FOR THIS CONTRACT WILL BE IMPLEMENTED IN ACCORDANCE WITH SECTION 219 OF THE HOWARD COUNTY DESIGN MANUAL & STANDARDS AND SPECIFICATIONS FOR SOIL EROSION AND SEDIMENT CONTROL IN DEVELOPING AREAS AND AS SHOWN ON SDP-06-156.

[Signature] 7/16/09
SIGNATURE OF DEVELOPER DATE

GP-07-06

THIS DEVELOPMENT IS APPROVED FOR EROSION AND SEDIMENT CONTROL BY HOWARD SOIL CONSERVATION DISTRICT.

APPROVED: *[Signature]* 7/23/09
HOWARD SOIL CONSERVATION DISTRICT DATE

PLAN

SCALE: 1" = 50'

AS BUILT
DATE: JUNE 2010

DEPARTMENT OF PUBLIC WORKS
HOWARD COUNTY, MARYLAND

DEPARTMENT OF PLANNING AND ZONING
HOWARD COUNTY, MARYLAND

FISHER, COLLINS & CARTER, INC.
CIVIL ENGINEERING CONSULTANTS & LAND SURVEYORS
CENTRAL SQUARE OFFICE PARK - 10272 BALTIMORE NATIONAL PIKE
ELLCOTT CITY, MARYLAND 21042
(410) 481-2292



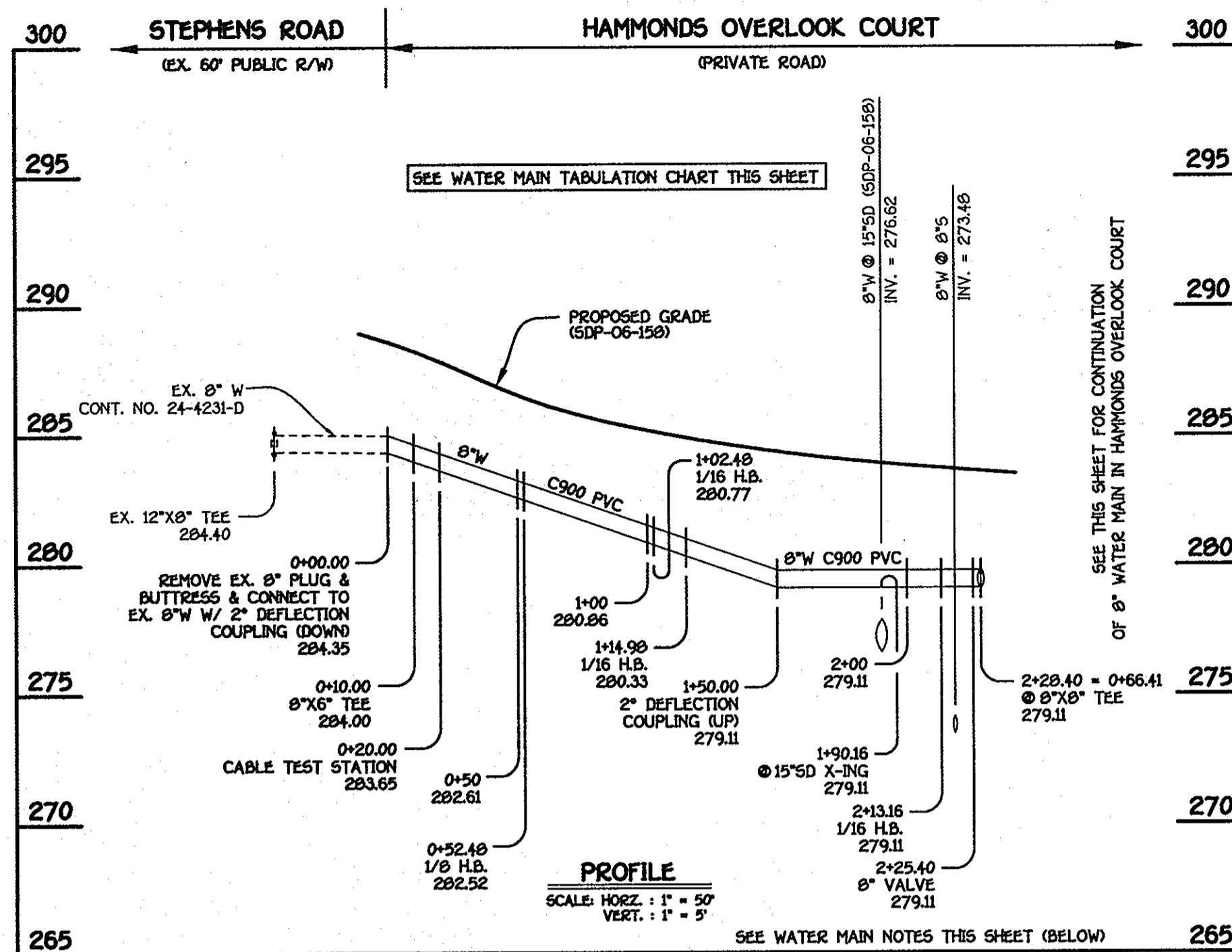
DESIGNED BY: B.C.R.
DRAWN BY: B.C.R.
CHECKED BY: P.W.K.
DATE: JULY, 2009

NO.	REVISION	DATE
1	REVISE NO. 3, INDICATE & DENOTE INSTALLATION OF BERM	8/6/09
2	REVISE CONTRACT TITLE TO REFLECT LOTS 17-19 & OPEN SPACE LOT 20	8/14/09
3	INDICATE REVISED PROJECT BOUNDARY & REVISED OPEN SPACE LOT 20	8/14/09
4	REVISE DELINEATION OF OPEN SPACE FROM "10" TO "20"	8/14/09
5	INDICATE REVISIONS OF BULK PARCEL "A" TO LOTS 17, 18 & 19	8/14/09

WATER & SEWER MAIN EXTENSIONS
TITLE SHEET & PLAN
600' SCALE MAP NO. 47 BLOCK NO. 8 & 9
F.C.C. WORK ORDER NO. 05049-3001
DATE: FILE NAME: WATER MAIN TITLE AND PLAN SHEET

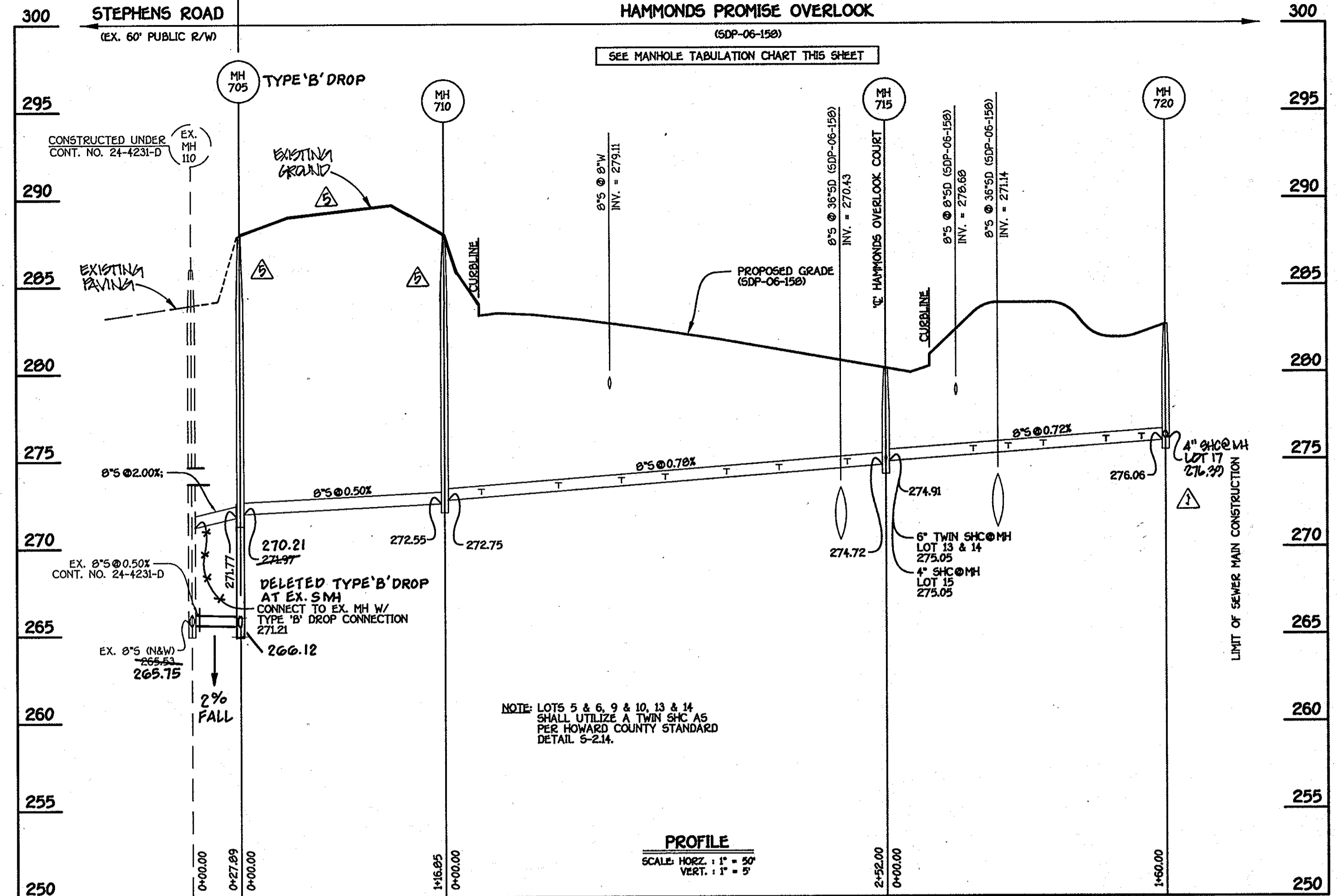
HAMMONDS PROMISE OVERLOOK
LOTS 1 THRU 15, 17 THRU 19 AND
OPEN SPACE LOT 20
CONTRACT NO. 24-4396-D
SIXTH ELECTION DISTRICT
HOWARD COUNTY, MARYLAND

SCALE AS SHOWN
SHEET 1 OF 3

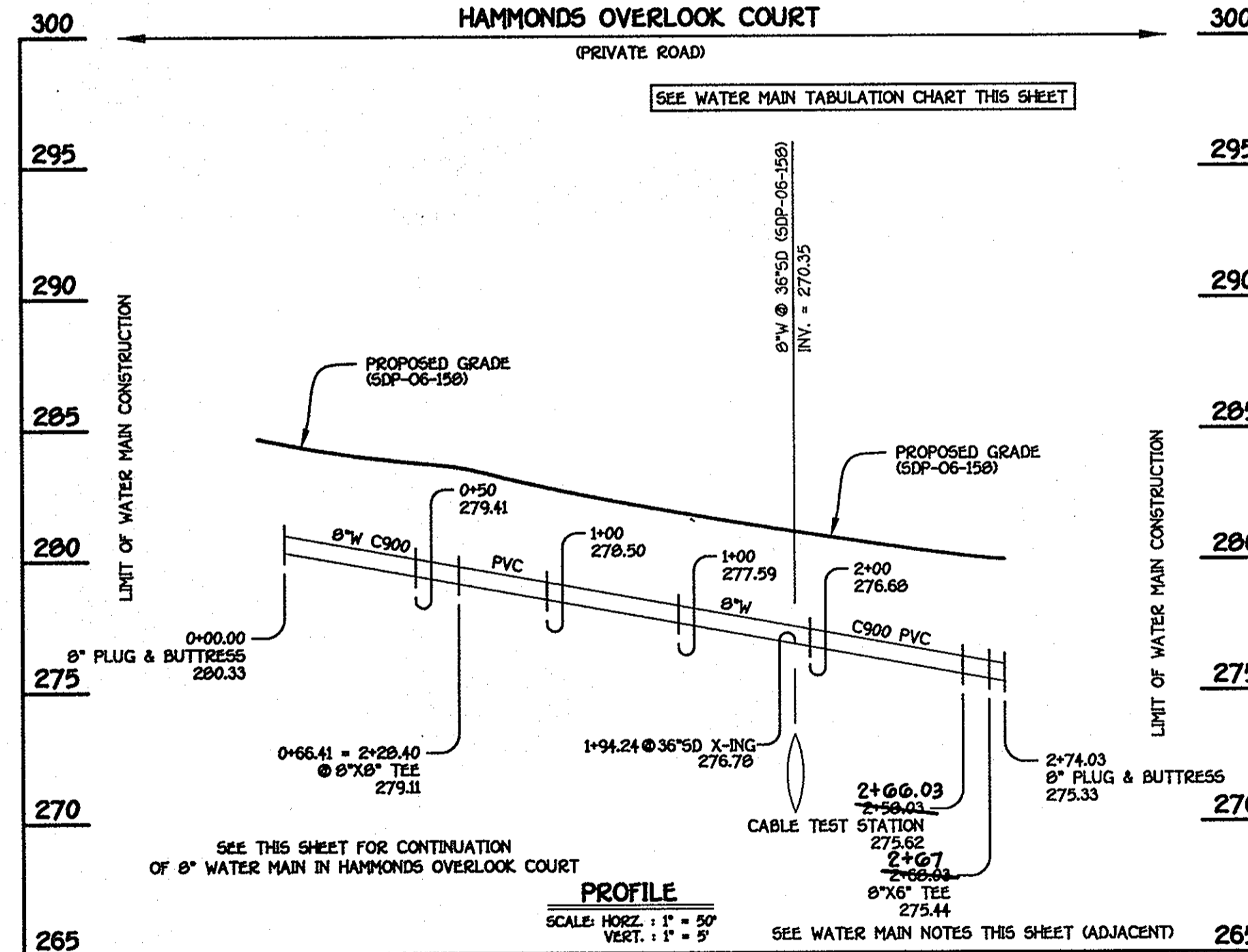


8" WATER MAIN; HAMMONDS OVERLOOK COURT

WATER MAIN TABULATION CHART			
W.M. STA.	APPURTENANCE	NORTHING	EASTING
8" WATER MAIN; HAMMONDS OVERLOOK COURT			
0+00.00	CONNECT TO EX. 8" W	532429.08	1356190.23
0+10.00	8"X6" TEE	532427.62	1356200.12
0+12.00	CABLE TEST STATION	532426.17	1356210.02
0+52.40	1/8 H.B.	532421.43	1356242.15
1+02.40	1/16 H.B.	532451.26	1356282.28
1+14.90	1/16 H.B.	532452.02	1356288.63
2+13.16	1/16 H.B.	532558.63	1356306.14
2+25.40	8" VALVE	532568.90	1356312.01
2+28.40	8"X6" TEE	532571.41	1356314.44



8" SEWER MAIN; LOTS 1 THRU 15



8" WATER MAIN; HAMMONDS OVERLOOK COURT

WATER MAIN TABULATION CHART			
W.M. STA.	APPURTENANCE	NORTHING	EASTING
8" WATER MAIN; HAMMONDS OVERLOOK COURT			
0+00.00	8" PLUG & BUTTRESS	532607.60	1356258.76
0+66.41	8"X6" TEE	532571.41	1356314.44
2+00.00	CABLE TEST STATION	532467.00	1356475.12
2+67.20	8"X6" TEE	532461.55	1356483.51
2+74.03	8" PLUG & BUTTRESS	532458.29	1356488.54

- WATER MAIN NOTES:**
1. ALL WATER MAINS SHALL BE AWWA C900 PVC PIPE.
 2. ALL PIPE BEDDING, TRACER WIRE, LOCATING TAPE AND OTHER APPURTENANCES SHALL BE IN ACCORDANCE WITH THE HOWARD COUNTY DESIGN MANUAL VOLUME II - WATER AND SEWER STANDARDS FOR AWWA C900 PVC WATER PIPE INSTALLATION.
 3. DEFLECTION COUPLINGS SHALL BE CERTAIN-TEED PVC HIGH DEFLECTION COUPLINGS.
 4. ALL WATER HOUSE CONNECTIONS AND TAPS SHALL BE PERFORMED USING A SADDLE.

NOTE: THIS ORIGINAL CONSTRUCTION PLAN, SHEET 2 OF 3 SUPERSEDES THE WATER & SEWER MAIN CONSTRUCTION PLAN PREVIOUSLY APPROVED AND SIGNED BY THE CHIEF OF THE DEVELOPMENT ENGINEERING DIVISION, DEPARTMENT OF PLANNING AND ZONING, ON JANUARY 18, 2007.

M.C.E. CHART	
LOT NO.	M.C.E.
1	280.15
2	280.00
3	279.86
4	277.48
5	277.83
6	277.83
7	278.11
8	278.30
9	278.58
10	278.58
11	278.81
12	279.11
13	279.51
14	279.51
15	279.95
17	280.81
18	280.85
19	280.41

MANHOLE TABULATION CHART			
NO.	NORTHING	EASTING	RIM ELEVATION
705	532731.29	1356232.84	280.00
710	532614.48	1356229.83	280.00
715	532477.17	1356441.13	280.25
720	532343.01	1356353.94	282.75

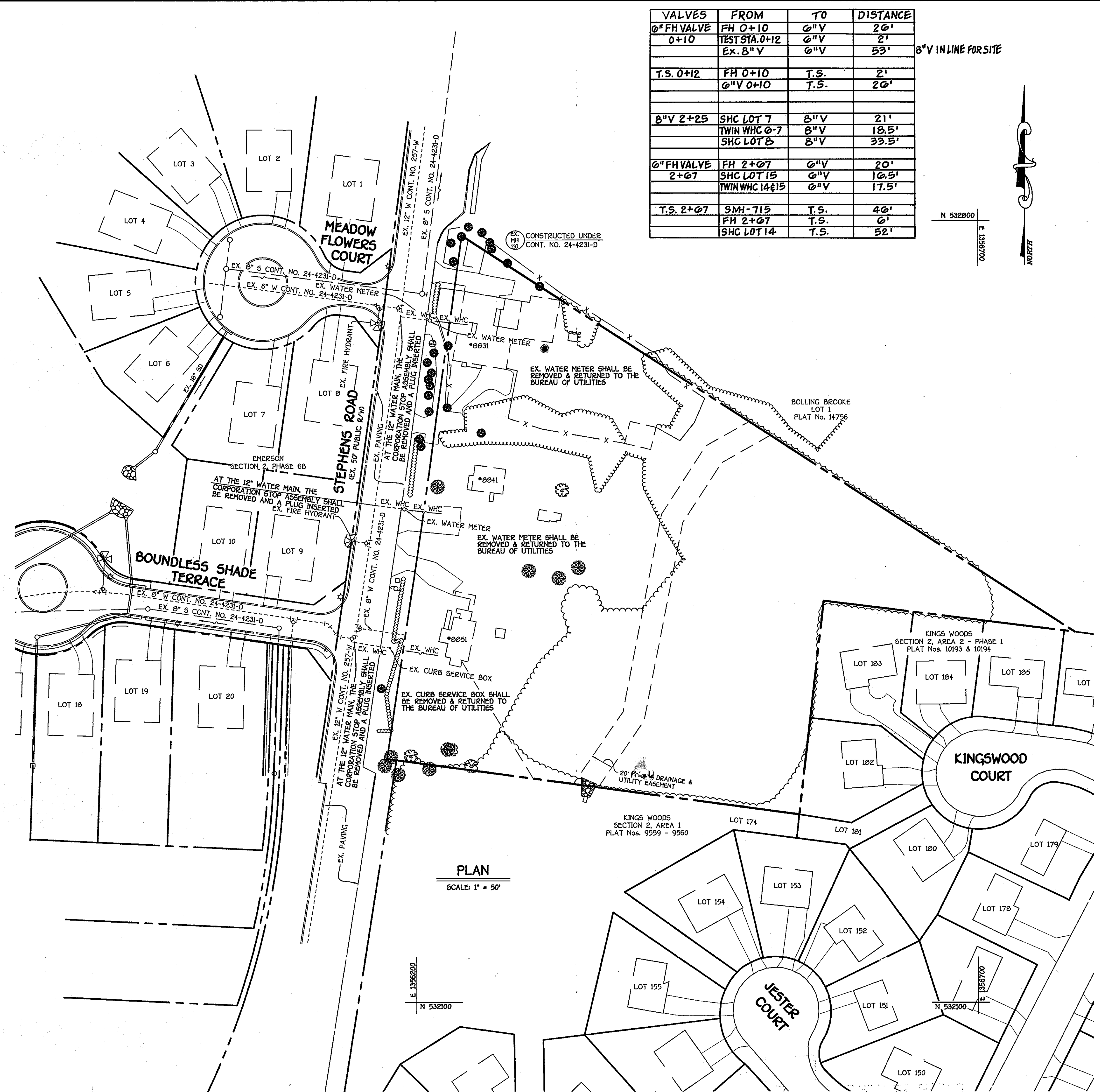
NOTE: SET ALL MH RIMS FLUSH W/ PROPOSED FINISHED GRADE.

SHC INVERT @ PROPERTY LINE		
STATION	LOT	ELEVATION
MH 710 TO MH 715		
0+21 LT.	4	273.58
0+65 LT. (TWIN)	5 (TWIN)	273.93
0+65 LT. (TWIN)	6 (TWIN)	273.92
1+01 LT.	7	274.21
1+26 LT.	8	274.40
1+61 LT. (TWIN)	9 (TWIN)	274.68
1+61 LT. (TWIN)	10 (TWIN)	274.68
1+91 LT.	11	274.91
2+30 LT.	12	275.21
0+ MH 715 LT. (TWIN)	13 (TWIN)	275.61
0+ MH 715 LT. (TWIN)	14 (TWIN)	275.61
0+ MH 715 LT.	15	276.05
MH 715 TO MH 720		
0+50 RT.	3	275.76
0+70 RT.	2	275.90
0+90 RT.	1	276.05
1+26 RT.	18	276.91
1+46 RT.	19	276.45
0+ MH 720 RT.	17	276.71

AS BUILT
DATE: JUNE 2010

CONTRACT NO. 24-4396-D
HAMMONDS PROMISE OVERLOOK
LOTS 1 THRU 15, 17 THRU 19
AND OPEN SPACE LOT 20
WATER & SEWER MAIN EXTENSIONS
HOWARD COUNTY, MARYLAND

DEPARTMENT OF PUBLIC WORKS HOWARD COUNTY, MARYLAND DATE: 7/21/09	DEPARTMENT OF PLANNING AND ZONING HOWARD COUNTY, MARYLAND DATE: 7/21/09	FISHER, COLLINS & CARTER, INC. CIVIL ENGINEERING CONSULTANTS & LAND SURVEYORS 1019 461 - 2895	DESIGNED BY: B.C.R. DRAWN BY: B.C.R. CHECKED BY: P.W.K. DATE: JULY, 2009	WATER & SEWER MAIN EXTENSIONS PROFILES & CHARTS 60' SCALE MAP NO. 47 BLOCK NO. 8 & 9 F.C.C. WORK ORDER NO. 05049-3001	HAMMONDS PROMISE OVERLOOK LOTS 1 THRU 15, 17 THRU 19 AND OPEN SPACE LOT 20 CONTRACT NO. 24-4396-D SIXTH ELECTION DISTRICT HOWARD COUNTY, MARYLAND	SCALE AS SHOWN SHEET 2 OF 3
--	---	---	---	--	---	--------------------------------



VALVES	FROM	TO	DISTANCE
0" FH VALVE	FH 0+10	0" V	20'
0+10	TEST STA. 0+12	0" V	2'
	EX. 8" V	0" V	53'
8" V IN LINE FOR SITE			
T.S. 0+12	FH 0+10	T.S.	2'
	0" V 0+10	T.S.	20'
8" V 2+25	SHC LOT 7	8" V	21'
	TWIN WHC 0-7	8" V	18.5'
	SHC LOT 8	8" V	33.5'
0" FH VALVE	FH 2+07	0" V	20'
2+07	SHC LOT 15	0" V	10.5'
	TWIN WHC 14&15	0" V	17.5'
T.S. 2+07	SMH-715	T.S.	40'
	FH 2+07	T.S.	0'
	SHC LOT 14	T.S.	52'

LOT #	FROM	TO	DISTANCE
WATER	FH 0+10	WHC	105'
LOTS 1-19	TWIN WHC 17-18	WHC	43'
TWIN WHC	YD. INLET I-1	WHC	107'
WATER (TWIN)	FH 0+10	WHC	02'
LOTS 17-18	TWIN WHC LOT 19-1	WHC	43'
WATER (TWIN)	YARD INLET I-1	WHC	71'
LOTS 2-3	TWIN WHC LOT 19-1	WHC	43'
	TWIN WHC LOT 6-7	WHC	100'
WATER	YARD INLET I-1	WHC	58'
LOTS 4-5	SHC-4	WHC	22'
	SHC-5	WHC	18.5'
WATER	YARD INLET I-1	WHC	49'
LOTS 6-7	SHC-0	WHC	17.5'
	SHC-7	WHC	20.5'
WATER	YARD INLET I-1	WHC	82'
LOTS 8-9	STORM DRAIN M-3	WHC	89'
	SHC LOT 9	WHC	17'
WATER	SHC LOT 10	WHC	18'
LOTS 10-11	STORM DRAIN M-3	WHC	50'
	SHC LOT 11	WHC	14'
WATER	STORM DRAIN M-3	WHC	48'
LOTS 12-13	SMH-715	WHC	25'
	SHC LOT 12	WHC	13.5'
WATER	FH 2+08	WHC	34'
LOTS 14-15	SHC LOT 15	WHC	14'
	SHC LOT 14	WHC	17.5'
LOT B SHC	I-1 YD. INLET	SHC	70'
	SHC LOT 7	SHC	25'
	TWIN WHC LOT 8-9	SHC	15'
LOT 9 SHC	SDMH-3	SHC	77'
	SHC LOT 10	SHC	5'
	TWIN WHC LOT 8-9	SHC	17'
LOT 10 SHC	SDMH-3	SHC	72'
	TWIN WHC LOT 10-11	SHC	18'
	SHC LOT 9	SHC	5'
LOT 11 SHC	SDMH-3	SHC	53'
	SMH-715	SHC	02B'
	SHC LOT 12	SHC	3B'
LOT 12 SHC	SDMH-3	SHC	47'
	SMH-715	SHC	35'
	SHC LOT 11	SHC	3B'
LOT 13 SHC	SDMH-3	SHC	03'
	SMH-715	SHC	29'
	SHC LOT 14	SHC	5'
LOT 14 SHC	SHC LOT 13	SHC	5'
	FH 2+08	SHC	47'
	SMH-715	SHC	30'
LOT 15 SHC	SMH-715	SHC	50'
	FH 2+08	SHC	30'
	TWIN WHC LOT 14-15	SHC	14'
LOT 17 SHC	SMH-720	SHC	18'
	SHC LOT 18	SHC	10'
LOT 18 SHC	SMH-720	SHC	23'
	SHC LOT 17	SHC	10'
	SHC LOT 19	SHC	20'

LOT #	FROM	TO	DISTANCE
LOT 19 SHC	SMH-720	SHC	39'
	SHC LOT 18	SHC	20'
	SHC LOT 1	SHC	30'
LOT 1 SHC	SMH-720	SHC	73'
	SMH-715	SHC	90'
	SHC LOT 2	SHC	20'
LOT 2 SHC	SHC LOT 1	SHC	20'
	SMH-715	SHC	71'
	FH 2+08	SHC	80'
LOT 3 SHC	SHC LOT 2	SHC	19'
	FH 2+08	SHC	74'
	SMH-715	SHC	52'
LOT 4 SHC	SMH-710	SHC	34'
	TWIN WHC LOT 4-5	SHC	22'
	YD. INLET I-1	SHC	74'
LOT 5 SHC	SMH-710	SHC	05.5'
	TWIN WHC LOT 4-5	SHC	19'
	SHC LOT 0	SHC	0'
LOT 0 SHC	SMH-710	SHC	71.5'
	YD. INLET I-1	SHC	54'
	TWIN WHC LOT 6-7	SHC	18'
LOT 7 SHC	YD. INLET I-1	SHC	00'
	SHC LOT 8	SHC	25'
	TWIN WHC LOT 6-7	SHC	20'

WATER TWINS HAVE SINGLE METER VAULT ON PROPLINE

I-1 = YARD INLET IS ACROSS FROM LOTS 6-7 WATER METER VAULT

M-3 = STORM DRAIN IS ACROSS FROM LOT 12 SHC

SDMH = STORM DRAIN MANHOLE

ABANDONMENT OF EXISTING WATER HOUSE CONNECTIONS

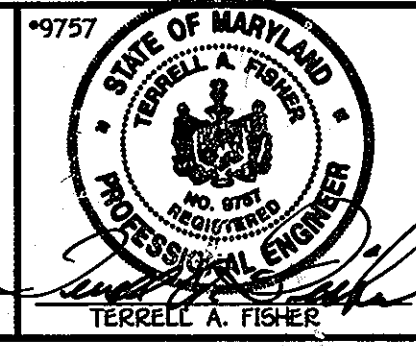
AS BUILT
DATE: JUNE 2010

CONTRACT NO. 24-4396-D
HAMMONDS PROMISE OVERLOOK
LOTS 1 THRU 15, 17 THRU 19 AND
OPEN SPACE LOT 20
WATER & SEWER MAIN EXTENSIONS
HOWARD COUNTY, MARYLAND

DEPARTMENT OF PUBLIC WORKS
HOWARD COUNTY, MARYLAND
R. H. B...
1-12-07

DEPARTMENT OF PLANNING AND ZONING
HOWARD COUNTY, MARYLAND
...
1/10/07

FISHER, COLLINS & CARTER, INC.
CIVIL ENGINEERING CONSULTANTS & LAND SURVEYORS
TERRELL A. FISHER



DESIGNED BY: B.C.R.
DRAWN BY: B.C.R.
CHECKED BY: P.W.K.
DATE: JANUARY, 2007

EXISTING WHCs PLAN
600' SCALE MAP NO. 47 BLOCK NO. 8 & 9
F.C.C. WORK ORDER NO. 05049-3001

HAMMONDS PROMISE OVERLOOK
LOTS 1 THRU 15, 17 THRU 19 AND
OPEN SPACE LOT 20
CONTRACT NO. 24-4396-D
SIXTH ELECTION DISTRICT
HOWARD COUNTY, MARYLAND

SCALE AS SHOWN
SHEET 3 OF 3

I:\05049\05049\SITE PLAN\STEPHEN ROAD\05049-3001 Water And Sewer Base Plan.dwg, 1/5/2007 8:51:39 AM, 1:1