

CONTRACT No. 24-4392-D
 MAPLE LAWN FARMS
 MIDTOWN DISTRICT
 PARCELS A-10 AND A-15 THRU A-18
 HOWARD COUNTY, MARYLAND
 DEPARTMENT OF PUBLIC WORKS

TYPE OF BUILDING	OFFICE/RETAIL / RESTAURANT / SCHOOL / BANK
NUMBER OF UNITS	5
NUMBER OF S.H.C.'s	5
NUMBER OF W.H.C.'s	4
DRAINAGE AREA	LITTLE PATUXENT
TREATMENT PLANT	LITTLE PATUXENT WWP

ITEMS	QUANTITIES ESTIMATED	AS-BUILT		
		QUANTITIES	TYPE	MANUFACTURER/SUPPLIER
12" WATER	160 LF	131 LF	D.I.P. CL92	GRIFFIN PIPE/DAME
8" WATER	551 LF	580 LF	"	"
6" WATER (FH's AND CONN.'s)	65 LF	184 LF	"	"
4" WATER (CONNECTIONS)	30 LF			
8" SEWER	810 LF	849 LF	P.V.C. 36"	N. AMERICAN PIPE/FERGUSON
6" SEWER (CONNECTIONS)	64 LF	75 LF	"	"
4" SEWER (CONNECTIONS)	10 LF			
1-1/2" Water (Conn.'s)	7 LF			
12"x4" T	1 EA	1 EA	MJ/C193	TYLER PIPE/FERGUSON
12"x6" T (CONNECTIONS)	1 EA	1 EA	"	"
8"x6" T (CONNECTIONS)	2 EA	1 EA	"	"
6" VALVE	2 EA	3 EA	MJ/GATE 02	"
4" VALVE	3 EA			
12"x8" REDUCER	2 EA	1 EA	MJ/C193	"
8"x6" REDUCER	1 EA	1 EA	"	"
8"x12" INCREASE	1 EA	1 EA	"	"
8"x1-1/2" Reducer	1 EA			
8" 1/8" HB	2 EA	2 EA	MJ/C193(45)	"
8"x6" T (FHT)	3 EA			
FIRE HYDRANT - 5.0'	1 EA	1 EA	A 423	MUEBLER/FERGUSON
FIRE HYDRANT - 6.0'	2 EA	2 EA	"	"
4" MANHOLE	7 EA	7 EA		

NAME OF UTILITY CONTRACTOR: GAINES & COMPANY, INC.

SURVEY AND DRAFTING DIV. CHECKBOX: AS-BUILT DATE.

GENERAL NOTES

- PART I
- APPROXIMATE LOCATIONS OF EXISTING MAINS ARE SHOWN. THE CONTRACTOR SHALL TAKE ALL NECESSARY PRECAUTIONS TO PROTECT EXISTING MAINS AND SERVICES AND MAINTAIN UNINTERRUPTED SERVICE. ANY DAMAGE INCURRED SHALL BE REPAIRED IMMEDIATELY TO THE SATISFACTION OF THE ENGINEER AT THE CONTRACTOR'S EXPENSE.
 - TOPOGRAPHY INDICATED WAS TAKEN FROM AERIAL TOPOGRAPHY PREPARED DURING MARCH 1997 BY SDI.
 - HORIZONTAL AND VERTICAL SURVEY CONTROLS: THE COORDINATES SHOWN ON THE DRAWINGS ARE BASED ON MARYLAND STATE REFERENCE SYSTEM NAD 83/91 AS PROJECTED BY HOWARD COUNTY GEODETIC CONTROL STATIONS No. 46B2, No. 41EA, AND No. 41EB. ALL VERTICAL CONTROLS ARE BASED ON NAVD 88. VERTICAL CONTROLS PROVIDED ON DRAWINGS ARE STANDARD DISCS ON CONCRETE MONUMENTS.
 - ALL PIPE ELEVATIONS SHOWN ARE INVERT ELEVATIONS UNLESS OTHERWISE NOTED ON THE PLANS.
 - CLEAR ALL UTILITIES BY A MINIMUM OF 12 INCHES. CLEAR ALL POLES BY 5'-0" MINIMUM OR TUNNEL AS REQUIRED UNLESS OTHERWISE NOTED. THE OWNER HAS CONTACTED THE UTILITY COMPANIES AND HAS MADE ARRANGEMENTS FOR BRACING OF POLES AS SHOWN ON THE DRAWINGS. IN THE EVENT THE CONTRACTOR'S WORK REQUIRES BRACING OF ADDITIONAL POLES, ANY COST INCURRED BY THE OWNER FOR THE BRACING OF ADDITIONAL POLES OR DAMAGES SHALL BE DEDUCTED FROM MONIES OWED THE CONTRACTOR. THE CONTRACTOR SHALL COORDINATE WITH THE UTILITY COMPANIES TO SCHEDULE THE BRACING OF THE POLES.
 - FOR DETAILS NOT SHOWN ON THE DRAWINGS, AND FOR MATERIALS AND CONSTRUCTION METHODS, USE HOWARD COUNTY DESIGN MANUAL, VOLUME IV, STANDARD SPECIFICATIONS AND DETAILS FOR CONSTRUCTION (LATEST EDITION). THE CONTRACTOR SHALL HAVE A COPY OF VOLUME IV ON THE JOB.
 - WHERE TEST PITS HAVE BEEN MADE ON EXISTING UTILITIES, THEY ARE NOTED BY THE SYMBOL (X) AT THE LOCATIONS OF THE TEST PITS. A NOTE OR NOTES CONTAINING THE RESULTS OF THE TEST PIT OR PITS IS INCLUDED ON THE DRAWINGS. EXISTING UTILITIES IN THE VICINITY OF THE PROPOSED WORK FOR WHICH TEST PITS HAVE NOT BEEN DUG SHALL BE LOCATED BY THE CONTRACTOR TWO WEEKS IN ADVANCE OF CONSTRUCTION OPERATIONS AT HIS OWN EXPENSE.
 - THE CONTRACTOR SHALL NOTIFY THE FOLLOWING UTILITY COMPANIES OR AGENCIES AT LEAST FIVE WORKING DAYS BEFORE STARTING WORK ON THESE PLANS.

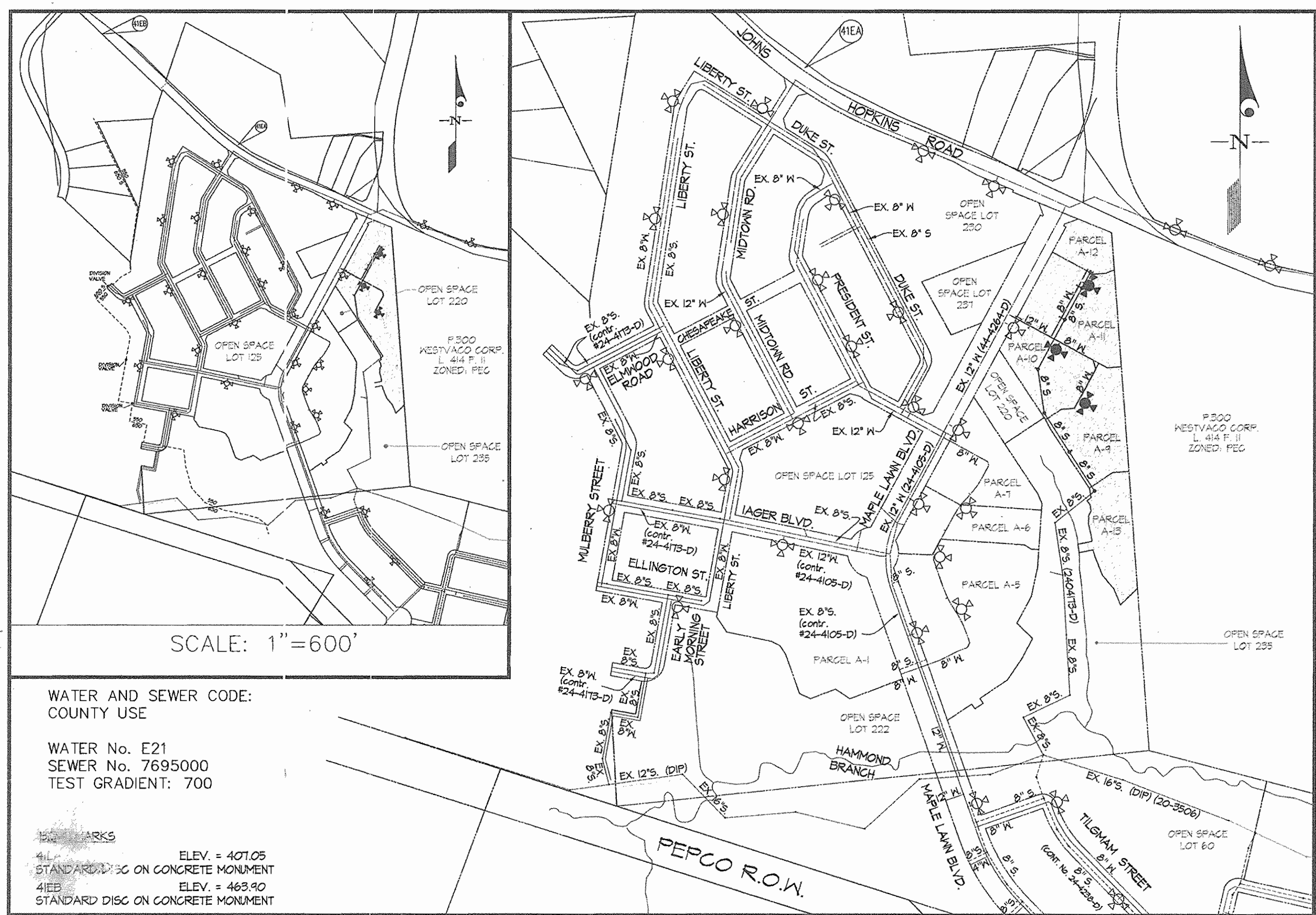
AT&T	1-800-252-1133
BGE (CONTRACTOR SERVICES)	410-850-4620
BGE (UNDER GROUND DAMAGE CONTROL)	410-685-1400
BUREAU OF UTILITIES	410-315-4400
COLONIAL PIPELINE CO.	410-195-1940
MISS UTILITY	1-800-251-TTTT
STATE HIGHWAY ADMINISTRATION	410-531-5533
VERIZON	1-800-143-0033 / 410-224-4210
 - TREES AND SHRUBS ARE TO BE PROTECTED FROM DAMAGE TO THE MAXIMUM EXTENT. TREES AND SHRUBS LOCATED WITHIN THE CONSTRUCTION AREA STRIP ARE NOT TO BE REMOVED OR DAMAGED BY THE CONTRACTOR.
 - THE CONTRACTOR SHALL REMOVE TREES, STUMPS AND ROOTS ALONG THE LINE OF EXCAVATION. PAYMENT FOR SUCH REMOVAL SHALL BE INCLUDED IN THE UNIT PRICE BID FOR CONSTRUCTION OF THE MAIN.
 - THE CONTRACTOR SHALL NOTIFY THE BUREAU OF HIGHWAYS, HOWARD COUNTY, AT (410)-315-1450 AT LEAST FIVE WORKING DAYS BEFORE OPEN CUTTING OR BORING/JACKING OF ANY COUNTY ROAD FOR LAYING WATER/SEWER MAINS OR HOUSE CONNECTIONS. THE APPROVAL OF THESE DRAWINGS WILL CONSTITUTE COMPLIANCE WITH DPM REQUIREMENTS PER SECTION 18.11.4(a) OF THE HOWARD COUNTY CODE.
 - ALL BUILDABLE LOTS SHOWN HEREON SHALL HAVE ONE (1) FOOT WIDE PUBLIC EASEMENT ADJACENT TO THE PUBLIC ROAD RIGHT OF WAY, FOR THE PURPOSE OF SIDEWALK MAINTENANCE, WATER HOUSE CONNECTION AND SEWER HOUSE CONNECTION.

PART II - WATER

- ALL MAINS SHALL BE D.I.P. CLASS 52 UNLESS OTHERWISE NOTED.
- TOPS OF ALL WATER MAINS SHALL HAVE A MINIMUM OF 3'-6" OF COVER UNLESS OTHERWISE NOTED.
- VALVES ADJACENT TO TEES SHALL BE STRAPPED TO TEES.
- ALL FITTINGS SHALL BE BUTTRESSED OR ANCHORED WITH CONCRETE IN ACCORDANCE WITH STANDARD DETAILS UNLESS OTHERWISE PROVIDED FOR ON THE DRAWINGS.
- FIRE HYDRANTS SHALL BE SET TO THE BURY LINE ELEVATIONS SHOWN ON THE DRAWINGS. ALL FIRE HYDRANTS SHALL BE INSTALLED IN ACCORDANCE WITH STANDARD DETAILS. THE SOIL AROUND THE FIRE HYDRANT SHALL BE COMPACTED IN ACCORDANCE WITH SECTION 1000 AND SECTION 1005 OF THE STANDARD SPECIFICATIONS.
- THE CONTRACTOR SHALL NOT OPERATE ANY WATER MAIN VALVES ON THE EXISTING WATER SYSTEM.

PART III - SEWER

- ALL SEWER MAINS SHALL BE D.I.P. OR P.V.C. UNLESS OTHERWISE NOTED.
- ALL MANHOLES SHALL BE 4'-0" INSIDE DIAMETER UNLESS OTHERWISE NOTED.
- FORCE MAINS SHALL BE D.I.P. ONLY.
- MANHOLES SHOWN WITH THE 12" AND 16" WALLS ARE FOR BRICK MANHOLES ONLY.
- MANHOLES DESIGNATED W.T. IN PLAN AND PROFILE SHALL HAVE WATERTIGHT FRAME AND COVER STANDARD DETAIL 0532. WHERE WATERTIGHT MANHOLE FRAMES AND COVERS ARE USED, SET TOP OF FRAME 1'-6" ABOVE FINISHED GRADE UNLESS OTHERWISE NOTED ON THE DRAWINGS.
- HOUSE(S) WITH THE SYMBOL "C.N.S." INDICATES THE CELLAR CANNOT BE SERVED.



WATER AND SEWER CODE:
 COUNTY USE
 WATER No. E21
 SEWER No. 7695000
 TEST GRADIENT: 700

MARKS
 41L ELEV. = 407.05
 STANDARD DISC ON CONCRETE MONUMENT
 41EB ELEV. = 463.90
 STANDARD DISC ON CONCRETE MONUMENT

SEDIMENT CONTROL MEASURES WILL BE IMPLEMENTED IN ACCORDANCE WITH SECTION 214 OF THE SPECIFICATIONS, WITH THE SITE DEVELOPMENT PLAN SDP-01-02.

REVIEWED FOR HOWARD SOIL CONSERVATION DISTRICT AND MEETS TECHNICAL REQUIREMENT.

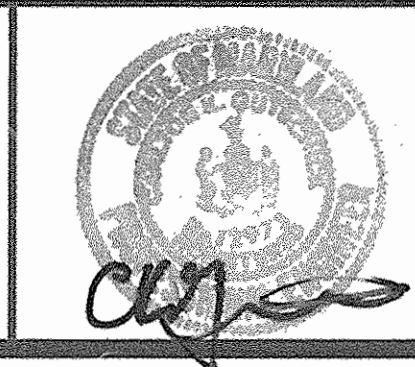
Jim Myers 2/6/07
 SIGNATURE DATE
 U.S.D.A. NATURAL RESOURCES CONSERVATION SERVICE
 THIS DEVELOPMENT PLAN IS APPROVED FOR SOIL EROSION AND SEDIMENT CONTROL BY THE HOWARD SOIL CONSERVATION DISTRICT.
 APPROVED: *John R. ...* 2/6/07
 HOWARD S.C.D. DATE

OWNER
 G & R MAPLE LAWN LLC
 SUITE 300 WOODHOLME CENTER
 1824 REISTERSTOWN ROAD
 BALTIMORE, MD 21208
 ATTN: CHARLIE O'DONOVAN
 410-484-8400

DEPARTMENT OF PUBLIC WORKS
 HOWARD COUNTY, MARYLAND
Robert ... 1-24-07
 CHIEF, BUREAU OF UTILITIES DATE

DEPARTMENT OF PLANNING AND ZONING
 HOWARD COUNTY, MARYLAND
... 2/9/07
 CHIEF, DEVELOPMENT ENGINEERING DIVISION DATE

GLWGUTSCHICK LITTLE & WEBER, P.A.
 CIVIL ENGINEERS, LAND SURVEYORS, LAND PLANNERS, LANDSCAPE ARCHITECTS
 3909 NATIONAL DRIVE - SUITE 250 - BURTONSVILLE OFFICE PARK
 BURTONSVILLE, MARYLAND 20865
 TEL: 301-421-4024 BAL: 410-860-1820 DC/VA: 301-369-2524 FAX: 301-421-4186



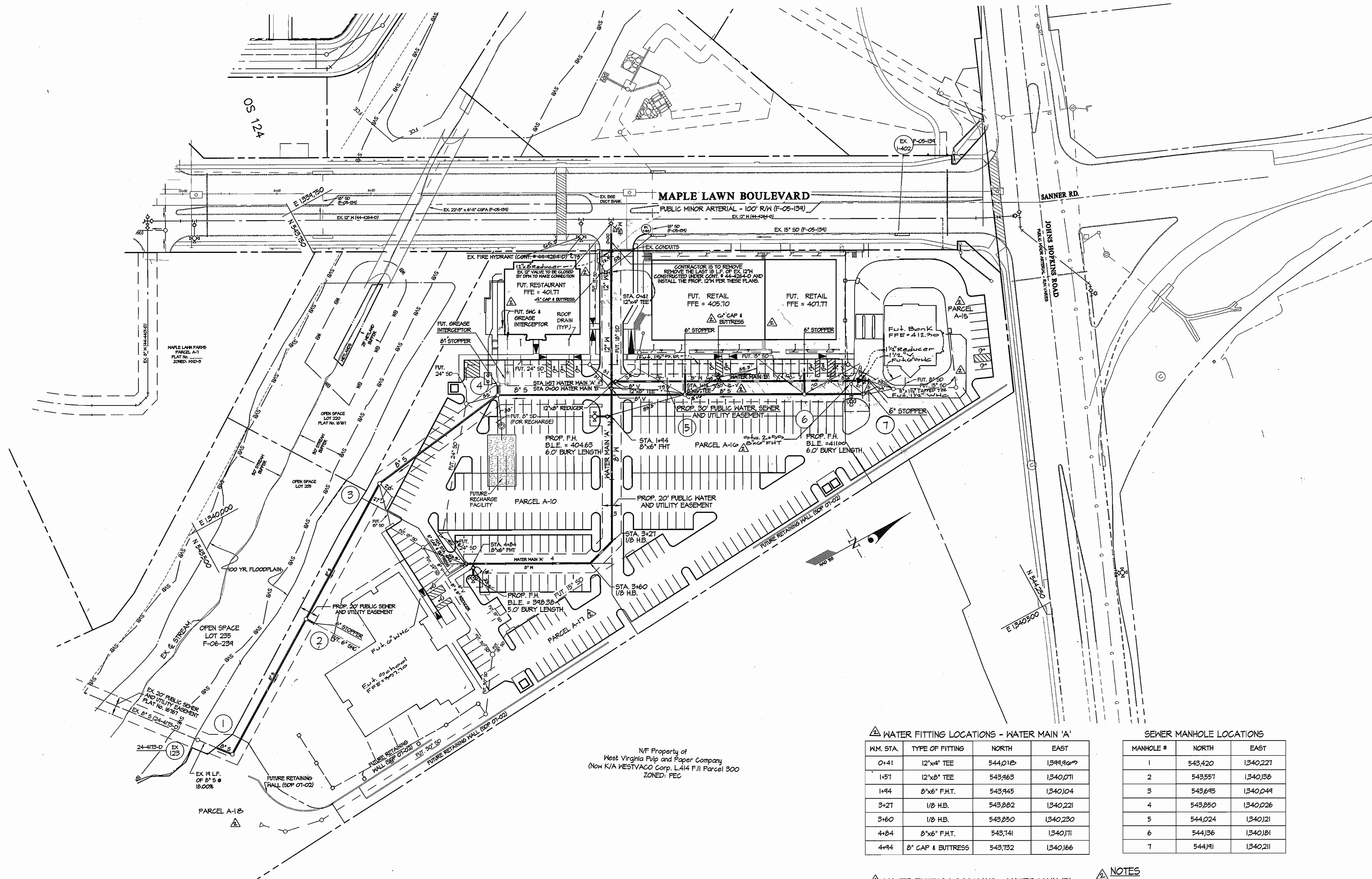
DES: DEV	
DRN: TL/DV	
CHK: DEV	W&J
DATE: 01/07	KCI
	BY NO

TITLE SHEET
 SCALE: AS SHOWN
 600' SCALE MAP NO. 46 BLOCK NO. 4

MAPLE LAWN FARMS
 CONTRACT No. 24-4392-D
 MIDTOWN DISTRICT
 PARCELS A-10 AND A-15 THRU A-18
 HOWARD COUNTY, MARYLAND
 ELECTION DISTRICT No. 5

SCALE AS SHOWN
 SHEET 1 OF 3

GLW FILE #05016
 05016WS01.dwg



N/E Property of
West Virginia Pulp and Paper Company
(Now K/A WESTVACO Corp. L414 F.I.I. Parcel 300
ZONED: PEC

▲ WATER FITTING LOCATIONS - WATER MAIN 'A'

W.M. STA.	TYPE OF FITTING	NORTH	EAST
0+41	12"x4" TEE	544,012	1341,967
1+57	12"x8" TEE	543,963	1340,071
1+94	8"x8" F.H.T.	543,945	1340,104
3+27	1/8" H.B.	543,882	1340,221
3+60	1/8" H.B.	543,850	1340,280
4+84	8"x8" F.H.T.	543,741	1340,171
4+94	8" CAP & BUTTRESS	543,732	1340,166

▲ SEWER MANHOLE LOCATIONS

MANHOLE #	NORTH	EAST
1	543,420	1340,221
2	543,557	1340,138
3	543,645	1340,049
4	543,850	1340,026
5	544,024	1340,121
6	544,136	1340,181
7	544,191	1340,211

▲ WATER FITTING LOCATIONS - WATER MAIN 'B'

W.M. STA.	TYPE OF FITTING	NORTH	EAST
1+14	8"x8" TEE	544,062	1340,125
2+55	8"x8" F.H.T.	544,187	1340,173
2+73	1 1/2" CAP & BUTTRESS	544,202	1340,201

- ▲ NOTES
- All manholes will be Std. 4.0' (G 5.12).
 - Locate street trees no closer than 5' from any WHC or SHC.
 - All future storm drain shown per SDP-07-02.

GLW FILE #05016
05016WS02.dwg

DEPARTMENT OF
PUBLIC WORKS
HOWARD COUNTY, MARYLAND

Robert Beemer 1-24-07
CHIEF, BUREAU OF UTILITIES DATE

DEPARTMENT OF
PLANNING AND ZONING
HOWARD COUNTY, MARYLAND

William D. ... 2/19/07
CHIEF, DEVELOPMENT ENGINEERING DIVISION & BOARD

GLW GUTSCHICK LITTLE & WEBER, P.A.
CIVIL ENGINEERS, LAND SURVEYORS, LAND PLANNERS, LANDSCAPE ARCHITECTS
3909 NATIONAL DRIVE - SUITE 250 - BURTINSVILLE OFFICE PARK
BURTINSVILLE, MARYLAND 20886
TEL: 301-421-4024 BAL: 410-880-1820 DC/VA: 301-588-2524 FAX: 301-421-4186



DES:	DEV				
DRN:	AVL	WWS	▲	Rev. WIC to Restaurant & Bank, Rev. Grease Interceptor to Restaurant, Release Fire Hydrant Reducer, Rev. Fire Hydrant Designations & Release Note #1	11/11/06
CHK:	DEV	WWS	▲	Rev. School Bank Footprints per SDP changes & Rev. Fire Hydrant Designations	11/11/06
DATE:	01/07	KCI	1	AS-BUILT DATA SHOWN	1/9/07
BY:	NO			REVISION	

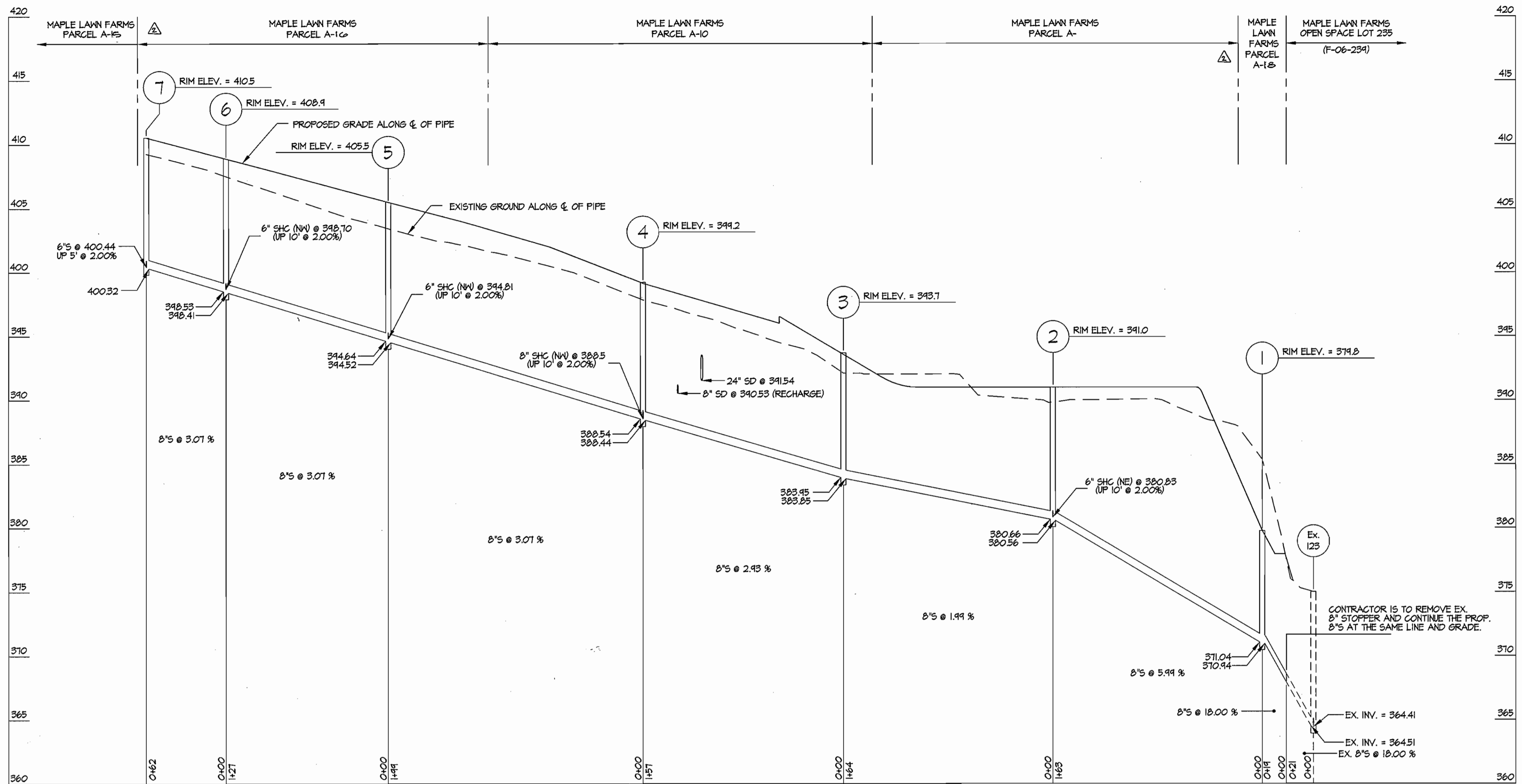
WATER and SEWER EXTENSION
PROFILES

600' SCALE MAP NO. 46 BLOCK NO. 4

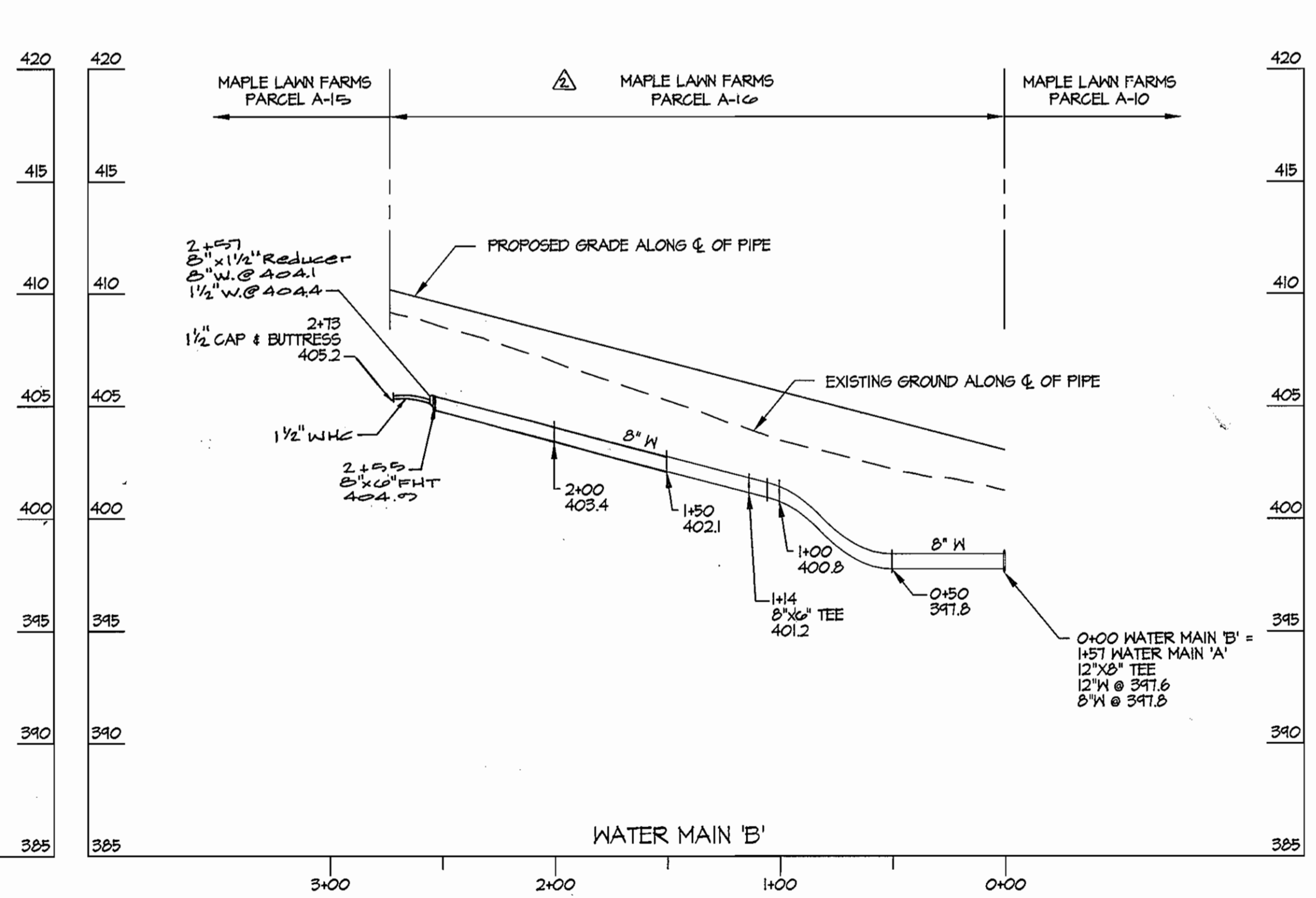
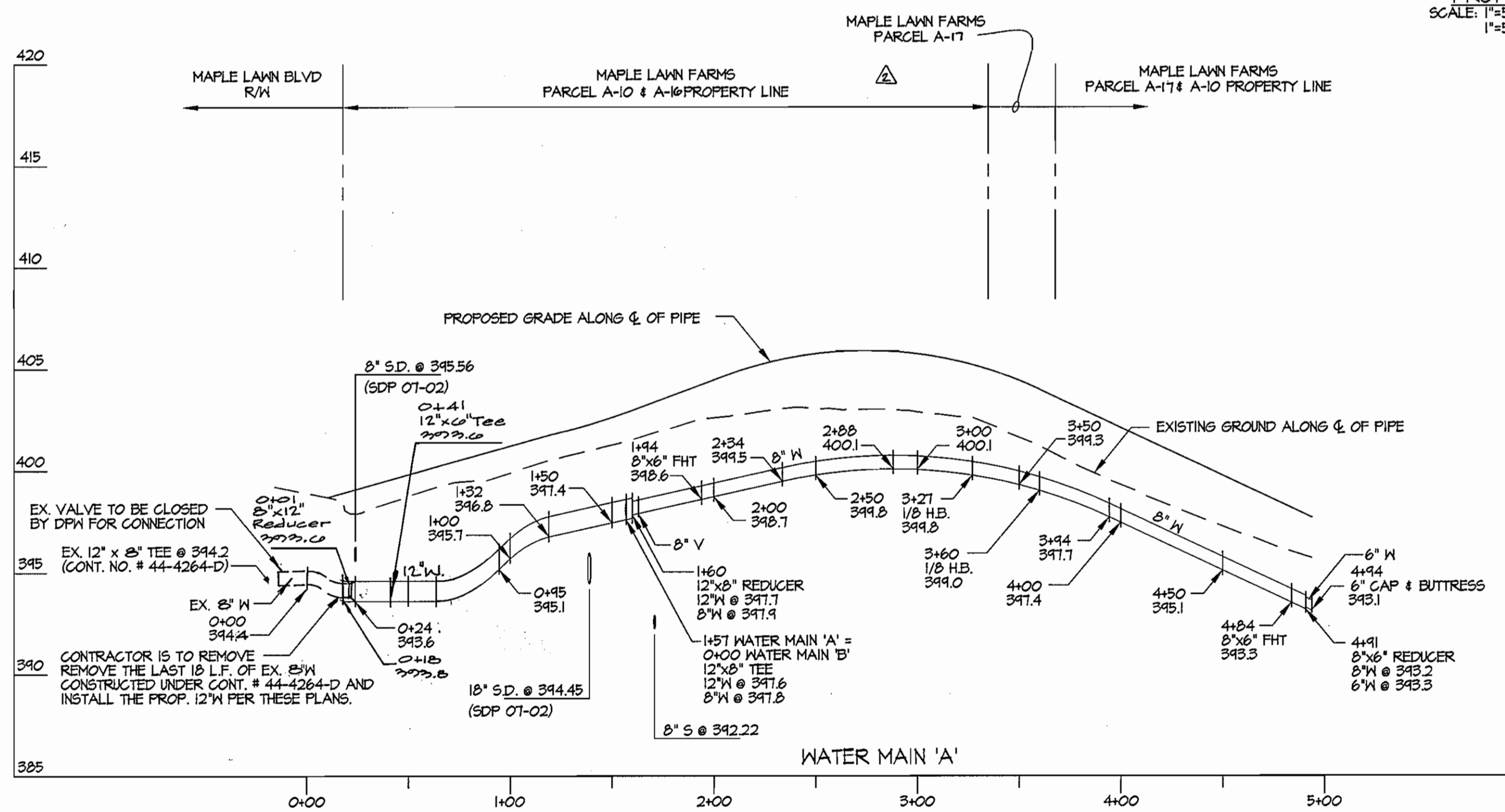
MAPLE LAWN FARMS
CONTRACT No. 24-4392-D
MIDTOWN DISTRICT
PARCELS A-10 and A-15 thru A-18
HOWARD COUNTY, MARYLAND
ELECTION DISTRICT No. 5

SCALE
1"=50'

SHEET
2 OF 3



PROFILES
SCALE: 1"=50' HORIZ.
1"=5' VERT.



GLW FILE #05016
05016WS03.dwg

DEPARTMENT OF
PUBLIC WORKS
HOWARD COUNTY, MARYLAND

R. J. ... 1-24-07
CHIEF, BUREAU OF UTILITIES DATE

DEPARTMENT OF
PLANNING AND ZONING
HOWARD COUNTY, MARYLAND

... 2/9/07
CHIEF, DEVELOPMENT ENGINEERING DIVISION DATE

GLW GUTSCHICK LITTLE & WEBER, P.A.
CIVIL ENGINEERS, LAND SURVEYORS, LAND PLANNERS, LANDSCAPE ARCHITECTS
3909 NATIONAL DRIVE - SUITE 250 - BURTONSVILLE OFFICE PARK
BURTONSVILLE, MARYLAND 20866
TEL: 301-421-4024 BALT: 410-380-1820 DC/VA: 301-589-2524 FAX: 301-421-4186



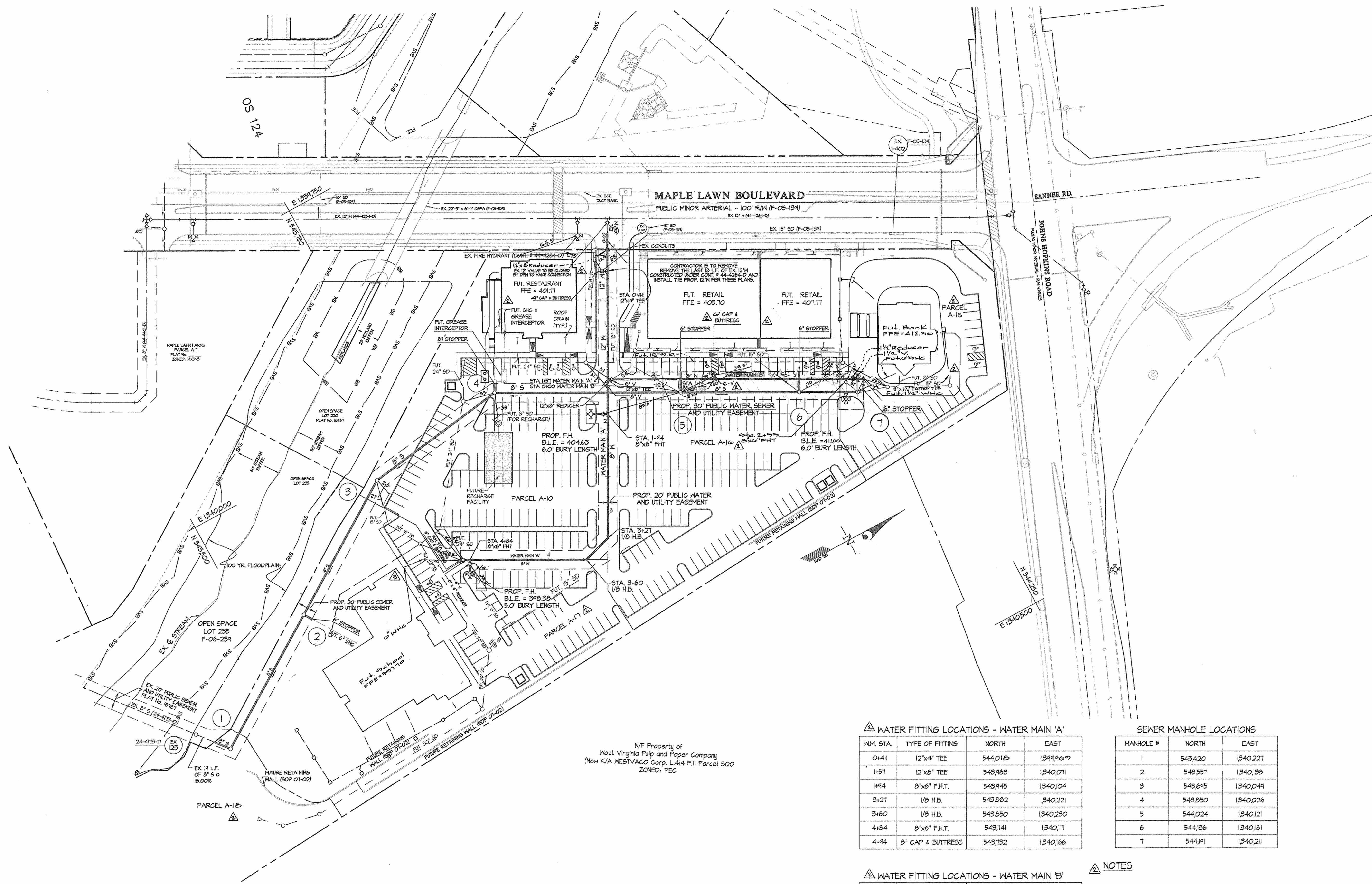
DES:	DEV		
DRN:	AVL		
CHK:	DEV		
DATE:	01/07		
BY:	NO	Rev. Profile to reflect changes in plan Rev. Per Designation in profile & side file	11/11/08
		REVISION	DATE

WATER and SEWER EXTENSION
PROFILES
600' SCALE MAP NO. 46 BLOCK NO. 4

MAPLE LAWN FARMS
CONTRACT No. 24-4392-D
MIDTOWN DISTRICT
PARCELS A-10 and A-15 THRU A-18
HOWARD COUNTY, MARYLAND
ELECTION DISTRICT No. 5

SCALE
AS
SHOWN

SHEET
3 OF 3



N/F Property of
West Virginia Pipe and Paper Company
Now K/A WESTVACO Corp. L414 F.II Parcel 300
ZONED: PCC

WATER FITTING LOCATIONS - WATER MAIN 'A'

WM. STA.	TYPE OF FITTING	NORTH	EAST
0+41	12"x4" TEE	544,018	1349,969
1+51	12"x8" TEE	543,963	1340,071
1+94	8"x6" F.H.T.	543,945	1340,104
3+21	1/8" H.B.	543,882	1340,221
3+60	1/8" H.B.	543,850	1340,230
4+84	8"x6" F.H.T.	543,741	1340,171
4+94	8" CAP & BUTTRESS	543,732	1340,166

SEWER MANHOLE LOCATIONS

MANHOLE #	NORTH	EAST
1	543,420	1340,221
2	543,551	1340,38
3	543,645	1340,049
4	543,850	1340,026
5	544,024	1340,121
6	544,136	1340,181
7	544,191	1340,211

WATER FITTING LOCATIONS - WATER MAIN 'B'

WM. STA.	TYPE OF FITTING	NORTH	EAST
1+4	8"x6" TEE	544,062	1340,125
2+55	8"x6" F.H.T.	544,071	1340,173
2+73	1/2" CAP & BUTTRESS	544,202	1340,201

- NOTES**
- All manholes will be Std. 4.0' (G 5.12).
 - Locate street trees no closer than 5' from any WMC or SHC.
 - All future storm drain shown per SDP-07-02.

DEPARTMENT OF
PUBLIC WORKS
HOWARD COUNTY, MARYLAND

Ruth Beavers
CHIEF, BUREAU OF UTILITIES

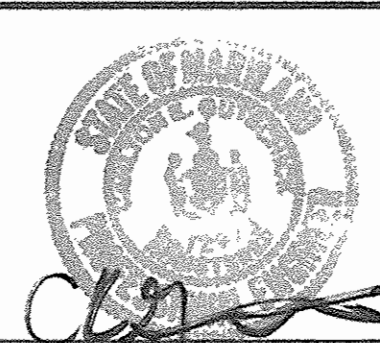
1-24-07
DATE

DEPARTMENT OF
PLANNING AND ZONING
HOWARD COUNTY, MARYLAND

William J. ...
CHIEF, DEVELOPMENT ENGINEERING DIVISION

8/9/07
DATE

GLWGUTSCHICK LITTLE & WEBER, P.A.
CIVIL ENGINEERS, LAND SURVEYORS, LAND PLANNERS, LANDSCAPE ARCHITECTS
3909 NATIONAL DRIVE - SUITE 250 - BURTONSVILLE OFFICE PARK
BURTONSVILLE, MARYLAND 20886
TEL: 301-421-4024 BALTO: 410-880-1820 DC/VA: 301-989-2524 FAX: 301-421-4186



DES:	DEV	DATE	BY	NO	REVISION	DATE
WSJ	WSJ	1/23/08	WSJ	1	Rev. Conn. to school per SDP changes	2/28/08
WSJ	WSJ	1/11/08	WSJ	2	Rev. WMC to Restaurant & Bank, Rev. Grease Interceptor to Restaurant, Relocate Fire Hydrant, Relocate Fire Hydrant, Relocate Fire Hydrant, Relocate Fire Hydrant, Relocate Fire Hydrant	1/11/08
WSJ	WSJ	1/11/08	WSJ	3	Rev. school Bank poster into per SDP changes	1/11/08
WSJ	WSJ	1/11/08	WSJ	4	Rev. school Bank poster into per SDP changes	1/11/08
KCI	I	1/9/07	KCI	1	AS-BUILT DATA SHOW	1/9/07
DATE:	01/07		BY:	NO	REVISION	DATE

WATER and SEWER EXTENSION PROFILES

600' SCALE MAP NO. 46 BLOCK NO. 4

MAPLE LAWN FARMS
CONTRACT No. 24-4392-D
MIDTOWN DISTRICT
PARCELS A-10 and A-15 Thru A-18
HOWARD COUNTY, MARYLAND
ELECTION DISTRICT No. 5

SCALE
1"=50'

SHEET
2 OF 3