

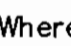
SHEET INDEX	
NO.	DESCRIPTION
1	TITLE SHEET
2	PLAN OF WATER MAINS
3	PROFILES OF WATER MAINS

WATER EXTENSION PLAN

MONTPELIER RESEARCH PARK

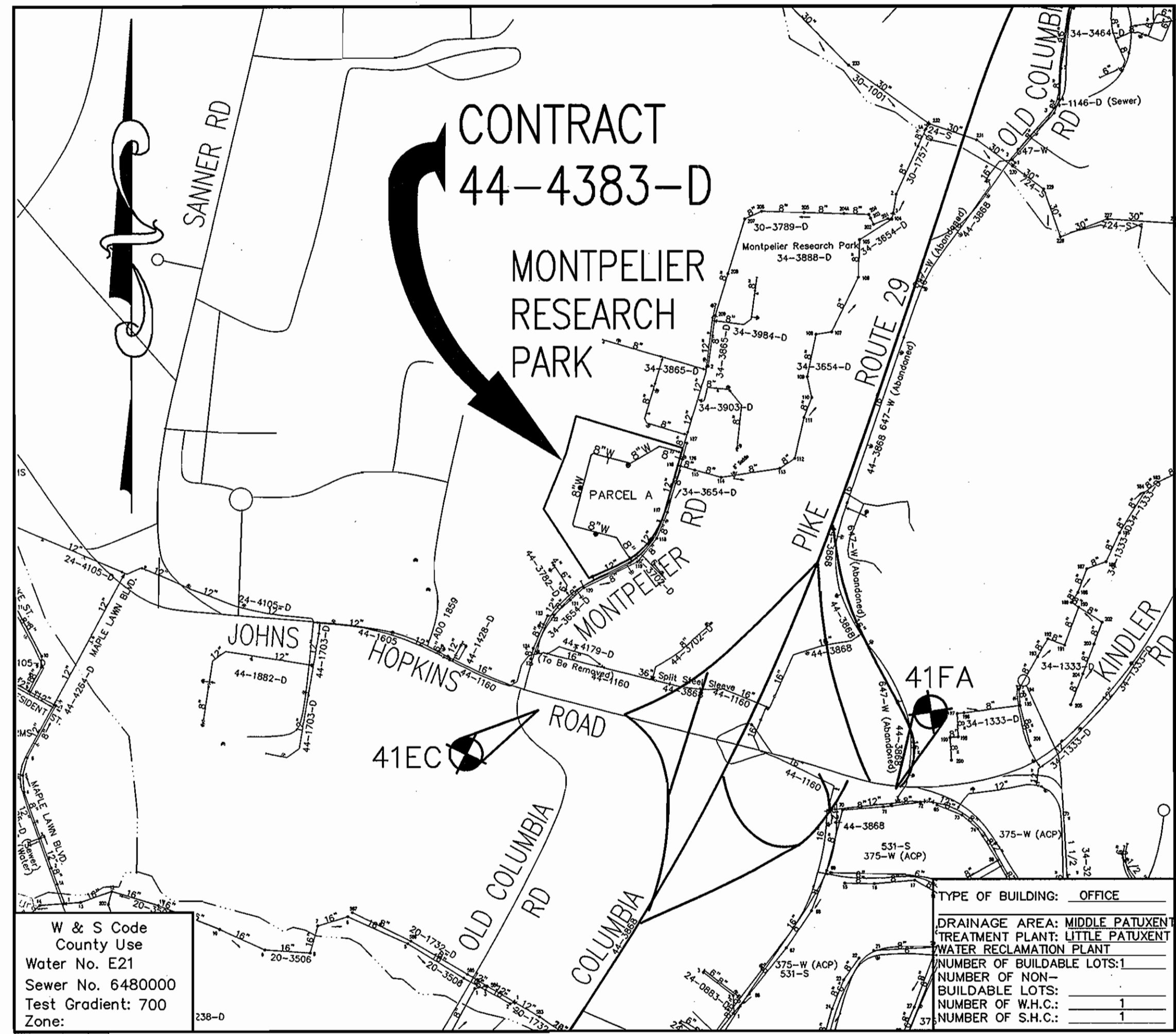
5TH ELECTION DISTRICT HOWARD COUNTY, MARYLAND CONTRACT NO. 44-4383-D

GENERAL NOTES

- Approximate locations of existing mains are shown. The contractor shall take all necessary precautions to protect existing mains and services and maintain uninterrupted service. Any damage incurred shall be repaired immediately to the satisfaction of the Engineer at the Contractor's expense.
- Topographic field surveys were performed in December 2005 by Patton Harris Rust and Associates.
- Horizontal and Vertical Survey Controls:
The coordinates shown on the drawings are based on Maryland State Reference System NAD '83/'91 as projected by Howard County Geodetic Control Stations No. 430.377 and 407.635 for stations 41EC and 41FA respectively. No. 41EC and No. 41FA
All vertical controls are based on NAVD '88. Vertical Controls on the drawings are
- All pipe elevations shown are invert elevations unless otherwise noted on the plans.
- Clear all utilities by a minimum of 12 inches. Clear all poles by 5'-0" minimum or tunnel as required unless otherwise noted. The owner has contacted the utility companies and has made arrangements for bracing of poles as shown on the drawings. In the event the contractor's work requires the bracing of additional poles, any cost incurred by the owner for the bracing of additional poles or damages shall be deducted from monies owed the contractor. The contractor shall coordinate with the utility companies to schedule the bracing of the poles.
- For details not shown on the drawings, and for materials and construction methods, use Howard County Design Manual, Volume IV, Standard Specifications and Details for Construction (Latest Edition). The contractor shall have a copy of Volume IV on the job.
- Where test pits have been made on existing utilities, they are noted by the symbol  at the locations of the test pits. A note or notes containing the results of the test pit or pits is included on the drawings. Existing utilities in the vicinity of the proposed work for which test pits have been dug shall be located by the contractor two weeks in advance of construction operations at his own expense.
- The contractor shall notify the following utility companies or agencies at least five working days before starting work shown on these plans:

AT&T	1-800-252-1133
BGE (Construction Services)	410-850-4520
BGE (Emergency)	410-685-1400
Bureau of Utilities	410-313-4900
Colonial Pipeline Co.	410-795-1390
Miss Utility	1-800-257-7777
State Highway Administration	410-531-5533
Verizon	1-800-743-0033 / 410-224-9210
- Trees and shrubs are to be protected from damage to the maximum extent. Trees and shrubs located within the construction strip are not to be removed or damaged by the contractor.
- The contractor shall remove trees, stumps and roots along the line of excavation. Payment for such removal shall be included in the unit price bid for construction of the main.
- The contractor shall notify the Bureau of Highways, Howard County, at 410-313-7450 at least five working days before open cutting or boring/jacking of any County road for laying water/sewer mains or house connections. The approval of these drawings will constitute compliance with DPW requirements per Section 18.114(a) of the Howard County Code.

QUANTITIES				
ITEMS	QUANTITIES ESTIMATED	AS-BUILT		
		QUANTITIES	TYPE	MANUFACTURER / SUPPLIER
8" PVC C900 DR-18 WATER	1419 LF	1419 LF		
6" VALVES	3 EA.	3		MULLER
8" VALVES	2 EA.	2		MULLER
8" HB	7 EA.	7		EBBA IRON
8"X6" RED	1 EA.	1		SIGMA
8"X8" TEE	1 EA.	1		SIGMA
8"X6" FHT	3 EA.	3		SIGMA
FIRE HYDRANT	3 EA.	3		MULLER



WATER NOTES

- All water mains shall be PVC C900 DR-18 unless otherwise noted.
- Tops of all water mains shall have a minimum of 3'-6" of cover unless otherwise noted.
- Valves adjacent to tees shall be strapped to tees.
- All fittings shall be buttressed or anchored with concrete in accordance with the Standard Details unless otherwise provided for on the drawings.
- Fire hydrants shall be set to the bury line elevations shown on the drawings. All fire hydrants shall be installed in accordance with Standard Details. The soil around the fire hydrant shall be compacted in accordance with Section 1000 and 1005 of the Standard Specifications.
- The contractor shall not operate any water main valves on the existing water system.

NAME OF UTILITY CONTRACTOR : _____

Sediment control measures for this contract will be implemented in accordance with Section 219 of the Specifications and as shown on SDP-06-097

CHECKBOX	
AS-BUILT DATE	11/1/07
SURVEY AND DRAFTING DIVISION	

Review for Howard Soil Conservation District and meets technical requirements.

Jim M... 5/30/06
NATURAL RESOURCES CONSERVATION SERVICE DATE

This plan is approved for erosion and sediment control by the Howard Soil Conservation District.

John R. ... 5/30/06
HOWARD SOIL CONSERVATION DISTRICT DATE

DEVELOPER
MID-ATLANTIC DEVELOPMENT III, INC.
ATTN: MICHAEL MANLEY
1055 THOMAS JEFFERSON STREET, SUITE 650
WASHINGTON, DC 20007
703-288-9200

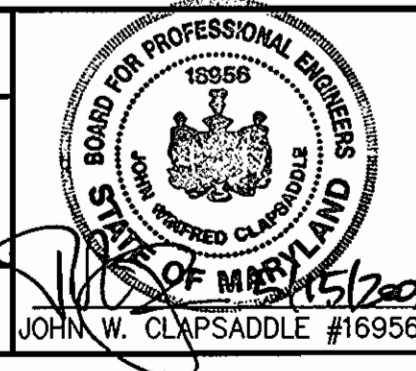
W & S Code County Use
Water No. E21
Sewer No. 6480000
Test Gradient: 700
Zone: _____

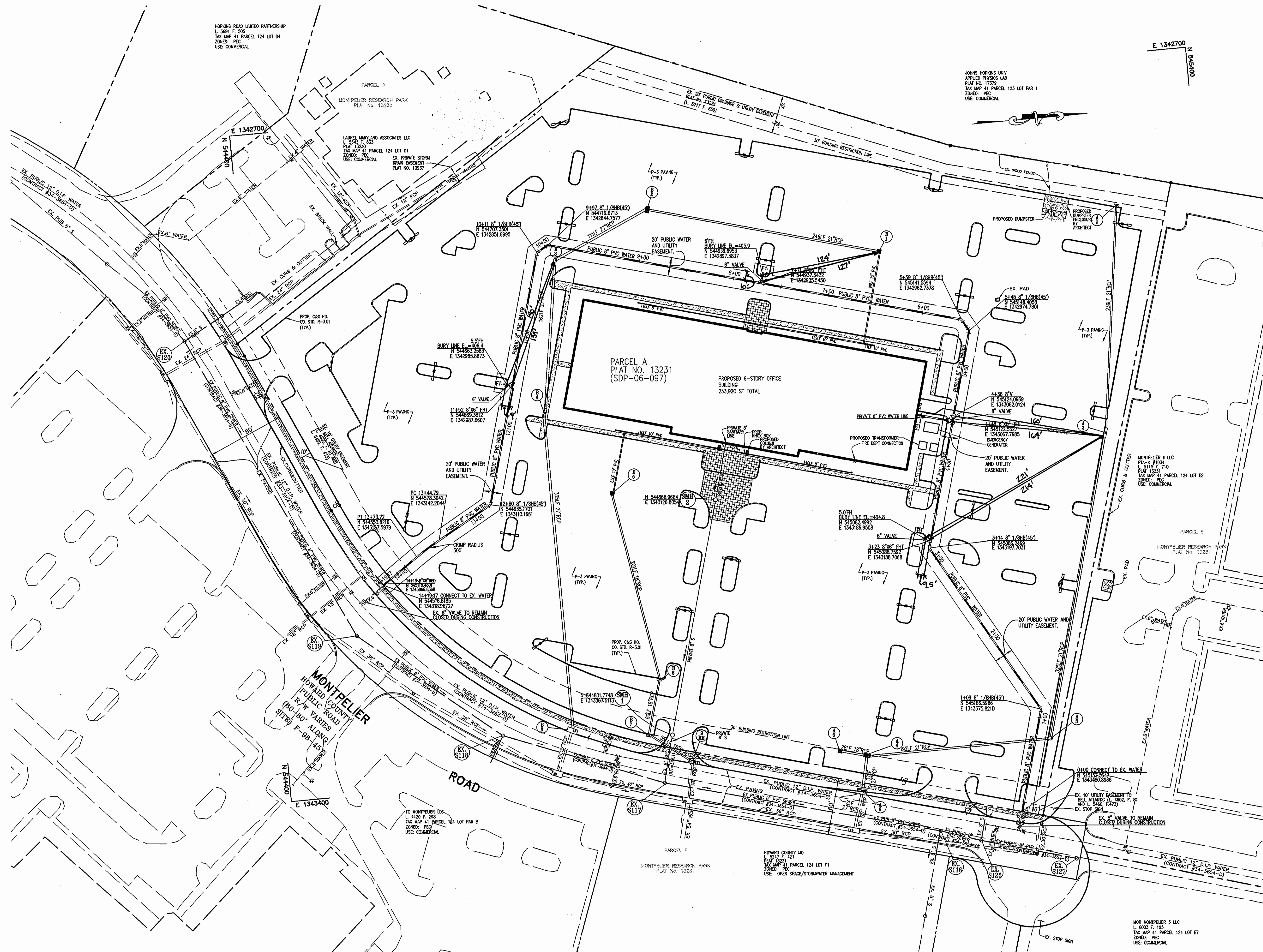
TYPE OF BUILDING: OFFICE
DRAINAGE AREA: MIDDLE PATUXENT TREATMENT PLANT, LITTLE PATUXENT WATER RECLAMATION PLANT
NUMBER OF BUILDABLE LOTS: 1
NUMBER OF NON-BUILDABLE LOTS: 1
NUMBER OF W.H.C.: 1
NUMBER OF S.H.C.: 1

VICINITY MAP
SCALE: 1"=600'

BENCH MARK
HOWARD COUNTY CONTROL
STATION 41EC
N 543,583.8147
E 1,342,628.7661
ELEV. 430.377

HOWARD COUNTY CONTROL
STATION 41FA
N 543,109.8842
E 1,344,797.5298
ELEV. 407.635

DEPARTMENT OF PUBLIC WORKS HOWARD COUNTY, MARYLAND <i>Robert ...</i> 5-19-06 CHIEF, BUREAU OF UTILITIES DATE	DEPARTMENT OF PLANNING & ZONING HOWARD COUNTY, MARYLAND <i>Michael ...</i> 6/5/06 CHIEF, DEVELOPMENT ENGINEERING DIVISION DATE	Patton Harris Rust & Associates, pc Engineers, Surveyors, Planners, Landscape Architects. 8818 Centre Park Drive Columbia, MD 21045 T 410.997.8900 F 410.997.9282 	DES: JWC DRN: RES CHK: DATE: 05/10/06 BY NO. REVISION DATE	TITLE SHEET	MONTPELIER RESEARCH PARK PARCEL A 5TH ELECTION DISTRICT HOWARD COUNTY, MARYLAND CONTRACT 44-4383-D SCALE AS SHOWN SHEET 1 OF 3
600' SCALE MAP NO. 41 BLOCK NO. 17					



This redline revision of Montpelier Research Park Parcel A, contract number 44-4383-D will supersede the plans approved on 6/5/06.

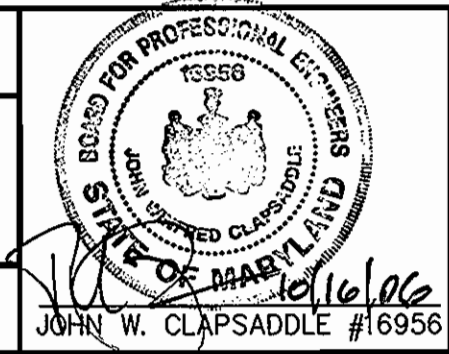
DEPARTMENT OF PUBLIC WORKS
HOWARD COUNTY, MARYLAND

DEPARTMENT OF PLANNING & ZONING
HOWARD COUNTY, MARYLAND

Patton Harris Rust & Associates, PC
Engineers, Surveyors, Planners, Landscape Architects.
8818 Centre Park Drive
Columbia, MD 21045
T 410.997.5900
F 410.997.9282

John W. Clapsaddle
10.30.06
DATE

W. Clapsaddle
11/5/06
DATE



DES: JWC			
DRN: RES			
CHK:			
JWC 1	SITE GRADING, STORM AND SANITARY	7/20/06	
BY NO.	REVISION	DATE	

DATE: 04/07/06

PLAN OF WATER MAINS

600' SCALE MAP NO. 41 BLOCK NO. 17

MONTPELIER RESEARCH PARK

PARCEL A
5TH ELECTION DISTRICT
HOWARD COUNTY, MARYLAND
CONTRACT 44-4383-D

SCALE
1"=50'

SHEET
2 OF 3