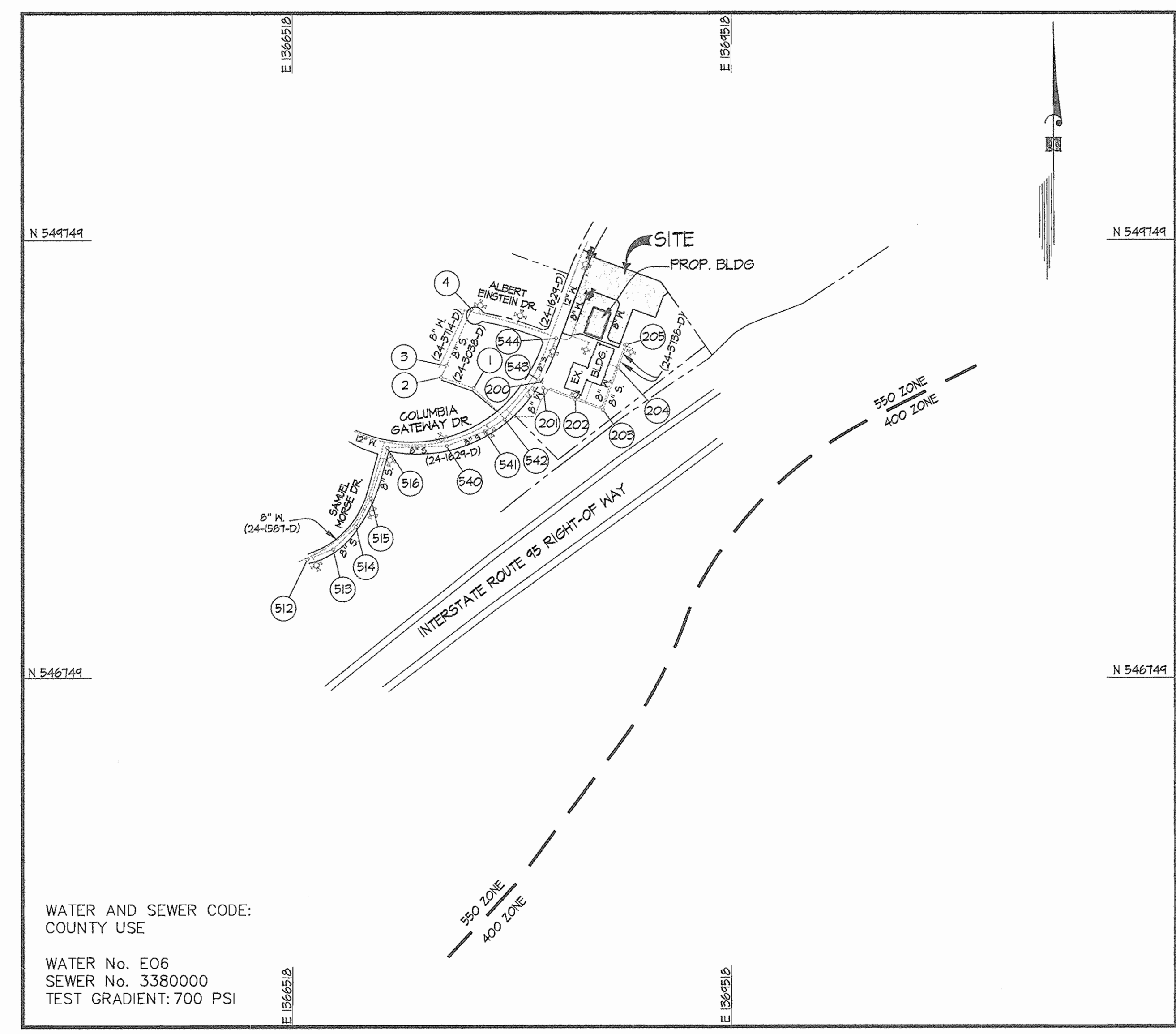


QUANTITIES				
ITEMS	QUANTITIES ESTIMATED	AS-BUILT		
		QUANTITIES	TYPE	MANUFACTURER/SUPPLIER
8" WATER	830'	840	CL. 52	U.S. PIPE
6" WATER	60'	72	CL. 52	U.S. PIPE
8" 1/2 HB.	6 EA.	6 EA.	M. J.	HUGHES
8" x 8" T.	1 EA.	1 EA.	M. J.	HUGHES
12" x 6" T.S. & V.	1 EA.	1 EA.	KENEDY	HUGHES
8" V.	3 EA.	3 EA.	KENEDY	HUGHES
6" V.	1 EA.	1 EA.	KENEDY	HUGHES
8" x 6" F.H.T.	1 EA.	1 EA.	KENEDY	HUGHES
F.H.	1 EA.			
PAVING REPLACEMENT	80 S.Y.			

TYPE OF BUILDING	OFFICE
NUMBER OF UNITS	1 BUILDING
NUMBER OF S.H.C.'s	N/A
NUMBER OF W.H.C.'s	1
DRAINAGE AREA	LITTLE PATUXENT
TREATMENT PLANT	LITTLE PATUXENT WATER RECLAMATION PLANT, SAVAGE, MD-HOWARD COUNTY



VICINITY MAP
SCALE: 1"=600'

- GENERAL NOTES**
- PART I**
- APPROXIMATE LOCATIONS OF EXISTING MAINS ARE SHOWN. THE CONTRACTOR SHALL TAKE ALL NECESSARY PRECAUTIONS TO PROTECT EXISTING MAINS AND SERVICES AND MAINTAIN UNINTERRUPTED SERVICE. ANY DAMAGE INCURRED SHALL BE REPAIRED IMMEDIATELY TO THE SATISFACTION OF THE ENGINEER AT THE CONTRACTOR'S EXPENSE.
 - TOPOGRAPHIC FIELD SURVEYS WERE PERFORMED ON NOVEMBER, 1998 BY GUTSCHICK, LITTLE & WEBER.
 - HORIZONTAL AND VERTICAL SURVEY CONTROLS:
 - THE COORDINATES SHOWN ON THE DRAWINGS ARE BASED ON MARYLAND STATE REFERENCE SYSTEM NAD 83/91 AS PROJECTED BY HOWARD COUNTY GEODETIC CONTROL STATIONS No. 2243002, AND No. 2243003.
 - ALL VERTICAL CONTROLS ARE BASED ON NAVD 83. VERTICAL CONTROLS PROVIDED ON DRAWINGS ARE BASED ON U.S.G.S. DATA.
 - ALL PIPE ELEVATIONS SHOWN ARE INVERT ELEVATIONS UNLESS OTHERWISE NOTED ON THE PLANS.
 - CLEAR ALL UTILITIES BY A MINIMUM OF 12 INCHES. CLEAR ALL POLES BY 5'-0" MINIMUM OR TUNNEL AS REQUIRED UNLESS OTHERWISE NOTED. THE OWNER HAS CONTACTED THE UTILITY COMPANIES AND HAS MADE ARRANGEMENTS FOR BRACING OF POLES AS SHOWN ON THE DRAWINGS. IN THE EVENT THE CONTRACTOR'S WORK REQUIRES BRACING OF ADDITIONAL POLES, ANY COST INCURRED BY THE OWNER FOR THE BRACING OF ADDITIONAL POLES OR DAMAGES SHALL BE DEDUCTED FROM MONIES OWED THE CONTRACTOR. THE CONTRACTOR SHALL COORDINATE WITH THE UTILITY COMPANIES TO SCHEDULE THE BRACING OF THE POLES.
 - FOR DETAILS NOT SHOWN ON THE DRAWING, AND FOR MATERIALS AND CONSTRUCTION METHODS, USE HOWARD COUNTY DESIGN MANUAL, VOLUME IV, STANDARD SPECIFICATIONS AND DETAILS FOR CONSTRUCTION (LATEST EDITION). THE CONTRACTOR SHALL HAVE A COPY OF VOLUME IV ON THE JOB.
 - WHERE TEST PITS HAVE BEEN MADE ON EXISTING UTILITIES, THEY ARE NOTED BY THE SYMBOL Φ AT THE LOCATIONS OF THE TEST PITS. A NOTE OR NOTES CONTAINING THE RESULTS OF THE TEST PIT OR PITS IS INCLUDED ON THE DRAWINGS. EXISTING UTILITIES IN THE VICINITY OF THE PROPOSED WORK FOR WHICH TEST PITS HAVE NOT BEEN DUG SHALL BE LOCATED BY THE CONTRACTOR TWO WEEKS IN ADVANCE OF CONSTRUCTION OPERATIONS AT HIS OWN EXPENSE.
 - THE CONTRACTOR SHALL NOTIFY THE FOLLOWING UTILITY COMPANIES OR AGENCIES AT LEAST FIVE WORKING DAYS BEFORE STARTING WORK ON THESE PLANS:

AT&T	1-800-252-4133
BGE (CONTRACTOR SERVICES)	410-250-4620
BGE (UNDER GROUND DAMAGE CONTROL)	410-695-1400
BUREAU OF UTILITIES	410-313-4900
COLONIAL PIPELINE CO.	410-745-1390
MISS UTILITY	1-800-251-TITI
STATE HIGHWAY ADMINISTRATION	410-531-5533
VERIZON	1-800-743-0033 / 410-224-4210
 - TREES AND SHRUBS ARE TO BE PROTECTED FROM DAMAGE TO THE MAXIMUM EXTENT. TREES AND SHRUBS LOCATED WITHIN THE CONSTRUCTION AREA STRIP ARE NOT TO BE REMOVED OR DAMAGED BY THE CONTRACTOR.
 - THE CONTRACTOR SHALL REMOVE TREES, STUMPS AND ROOTS ALONG THE LINE OF EXCAVATION. PAYMENT FOR SUCH REMOVAL SHALL BE INCLUDED IN THE UNIT PRICE BID FOR CONSTRUCTION OF THE MAIN.
 - THE CONTRACTOR SHALL NOTIFY THE BUREAU OF HIGHWAYS, HOWARD COUNTY, AT (410)-313-1450 AT LEAST FIVE WORKING DAYS BEFORE OPEN CUTTING OR BORING/JACKING OF ANY COUNTY ROAD FOR LAYING WATER/SEWER MAINS OR HOUSE CONNECTIONS. THE APPROVAL OF THESE DRAWINGS WILL CONSTITUTE COMPLIANCE WITH DPW REQUIREMENTS PER SECTION 18.11.4(G) OF THE HOWARD COUNTY CODE.
- PART II - WATER**
- ALL MAINS SHALL BE D.I.P. CLASS 52 UNLESS OTHERWISE NOTED.
 - TOPS OF ALL WATER MAINS SHALL HAVE A MINIMUM OF 3'-6" OF COVER UNLESS OTHERWISE NOTED.
 - VALVES ADJACENT TO TEES SHALL BE STRAPPED TO TEES.
 - ALL FITTINGS SHALL BE BUTTRESSED OR ANCHORED WITH CONCRETE IN ACCORDANCE WITH STANDARD DETAILS UNLESS OTHERWISE PROVIDED FOR ON THE DRAWINGS.
 - FIRE HYDRANTS SHALL BE SET TO THE BURY LINE ELEVATIONS SHOWN ON THE DRAWINGS. ALL FIRE HYDRANTS SHALL BE INSTALLED IN ACCORDANCE WITH STANDARD DETAILS. THE SOIL AROUND THE FIRE HYDRANT SHALL BE COMPACTED IN ACCORDANCE WITH SECTION 1000 AND SECTION 1005 OF THE STANDARD SPECIFICATIONS.
 - THE CONTRACTOR SHALL NOT OPERATE ANY WATER MAIN VALVES ON THE EXISTING WATER SYSTEM.

WATER AND SEWER CODE:
COUNTY USE

WATER No. E06
SEWER No. 3380000
TEST GRADIENT: 700 PSI

CONTRACT No. 44-4382-D
COLUMBIA GATEWAY
PARCEL No. 'T-1'
HOWARD COUNTY, MARYLAND
DEPARTMENT OF PUBLIC WORKS

Sediment Control Measures will be implemented in accordance with Section 219 of the Specifications & with Road Drawings Plan SDP 99-54; Drawings for Sediment & Erosion Control.

REVIEWED FOR HOWARD SOIL CONSERVATION DISTRICT AND MEETS TECHNICAL REQUIREMENT.

John K. Rhoton 8/14/06
SIGNATURE DATE

U.S.D.A. NATURAL RESOURCES CONSERVATION SERVICE

THIS DEVELOPMENT PLAN IS APPROVED FOR SOIL EROSION AND SEDIMENT CONTROL BY THE HOWARD SOIL CONSERVATION DISTRICT.

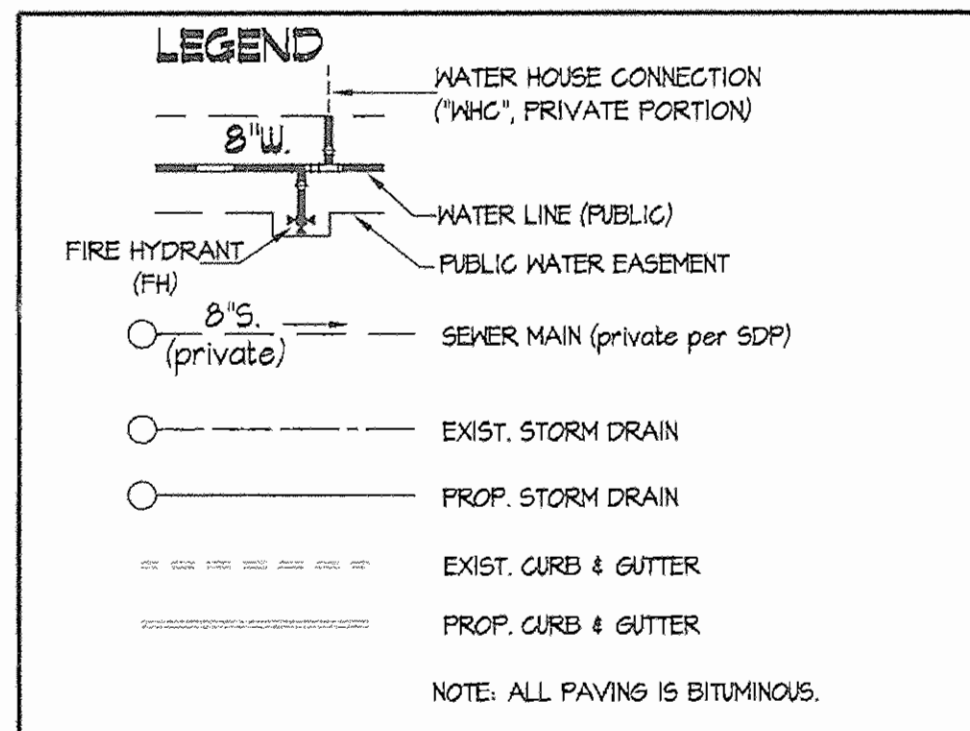
APPROVED: *John K. Rhoton* 8/14/06
HOWARD S.C.D. DATE

OWNER / DEVELOPER PARCEL T-1:
ORIX COLUMBIA MARYLAND, INC.
100 N. RIVERSIDE PLAZA
SUITE 400
CHICAGO, IL 60606
(312) 669-6445

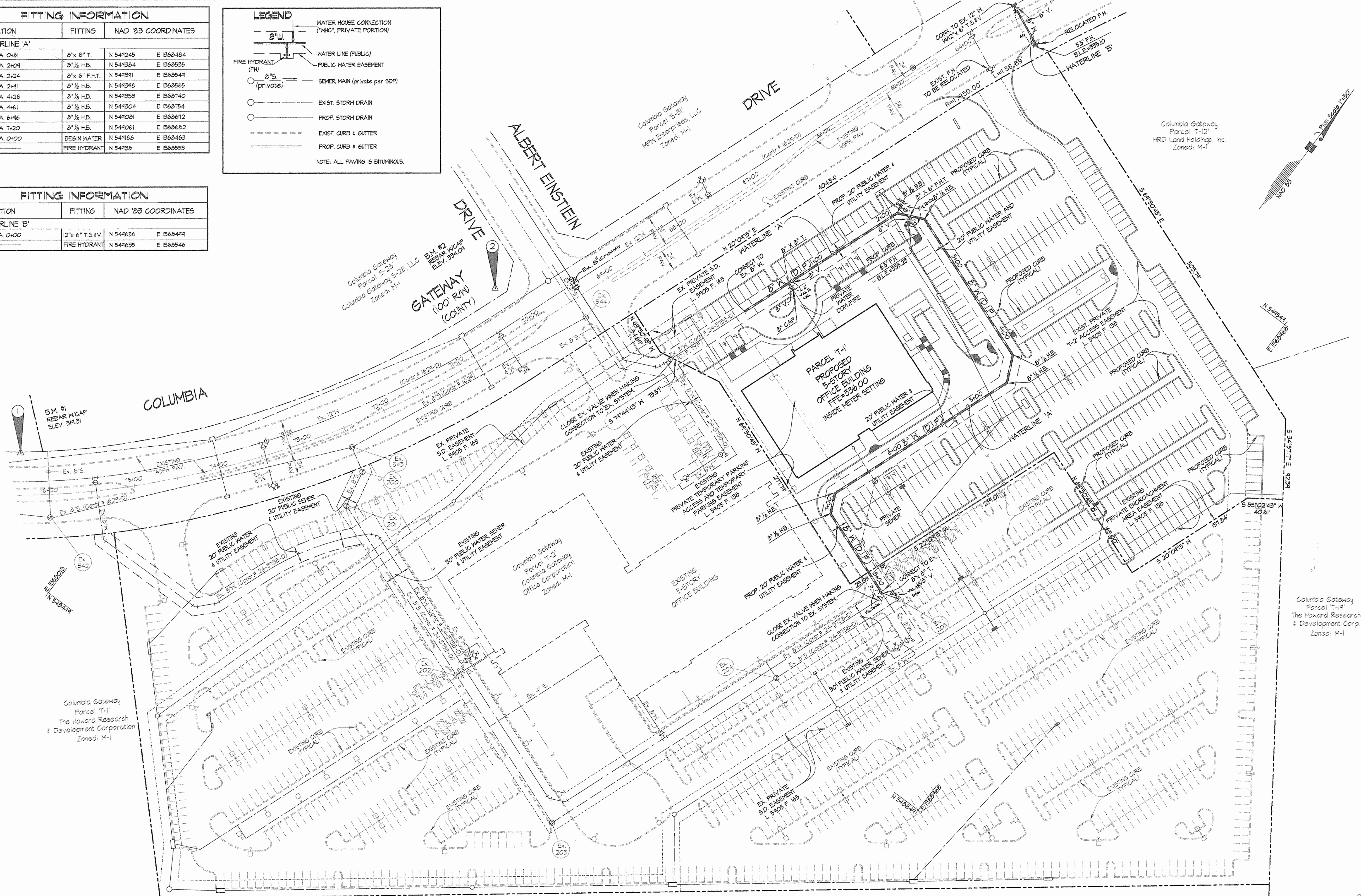
GLW FILE No. 98067

DEPARTMENT OF PUBLIC WORKS HOWARD COUNTY, MARYLAND <i>Robert Bainger</i> 8-9-06 CHIEF, BUREAU OF UTILITIES DATE	DEPARTMENT OF PLANNING AND ZONING HOWARD COUNTY, MARYLAND <i>[Signature]</i> 8/2/06 CHIEF, DEVELOPMENT ENGINEERING DIVISION DATE	GLW GUTSCHICK LITTLE & WEBER, P.A. CIVIL ENGINEERS, LAND SURVEYORS, LAND PLANNERS, LANDSCAPE ARCHITECTS 3909 NATIONAL DRIVE - SUITE 250 - BURTONSVILLE OFFICE PARK BURTONSVILLE, MARYLAND 20866 TEL: 301-421-4024 BAL: 410-980-1820 DC/VA: 301-988-2524 FAX: 301-421-4185	DES: W&J DRN: W&J CHK: <i>W&J</i> DATE: JUNE 2006 BY NO REVISION DATE	TITLE SHEET SCALE: AS SHOWN 600' SCALE MAP NO. 4.3 BLOCK NO. 7	COLUMBIA GATEWAY PARCEL No. 'T-1' HOWARD COUNTY, MARYLAND ELECTION DISTRICT No. 6 CONTRACT No. 44-4382-D SCALE AS SHOWN SHEET 1 OF 3
--	---	--	---	--	---

FITTING INFORMATION			
LOCATION	FITTING	NAD '83 COORDINATES	
WATERLINE 'A'			
W.M. STA. 0+61	8" x 8" T.	N 549245	E 1368484
W.M. STA. 2+09	8" 1/2 H.B.	N 549384	E 1368535
W.M. STA. 2+24	8" x 8" F.H.T.	N 549391	E 1368549
W.M. STA. 2+41	8" 1/2 H.B.	N 549398	E 1368565
W.M. STA. 4+28	8" 1/2 H.B.	N 549333	E 1368740
W.M. STA. 4+61	8" 1/2 H.B.	N 549304	E 1368754
W.M. STA. 6+46	8" 1/2 H.B.	N 549281	E 1368812
W.M. STA. 7+20	8" 1/2 H.B.	N 549261	E 1368882
W.M. STA. 0+00	BEG. N WATER	N 549188	E 1368463
	FIRE HYDRANT	N 549381	E 1368553



FITTING INFORMATION			
LOCATION	FITTING	NAD '83 COORDINATES	
WATERLINE 'B'			
W.M. STA. 0+00	12" x 6" T.S.4 V.	N 549656	E 1368491
	FIRE HYDRANT	N 549635	E 1368546



GLW FILE #98067
98067FW2.dwg

DEPARTMENT OF PUBLIC WORKS
HOWARD COUNTY, MARYLAND

Ruth Bunn 0-4-06
CHIEF, BUREAU OF UTILITIES DATE

DEPARTMENT OF PLANNING AND ZONING
HOWARD COUNTY, MARYLAND

Aslan
CHIEF, DEVELOPMENT ENGINEERING DIVISION DATE

GLW GUTSCHICK LITTLE & WEBER, P.A.
CIVIL ENGINEERS, LAND SURVEYORS, LAND PLANNERS, LANDSCAPE ARCHITECTS
3909 NATIONAL DRIVE - SUITE 250 - BURTONSVILLE OFFICE PARK
BURTONSVILLE, MARYLAND 20866
TEL: 301-421-4024 FAX: 410-880-1820 DC/VA: 301-989-2524 FAX: 301-421-4186



DES:	MsJ				
DRN:	MsJ				
CHK:	msj				
DATE:	JUNE 2006	BY:	KC1	NO:	1
		REVISION:	AS-BUILT DATA SHOWN	DATE:	02/1/07

WATER EXTENSION PLAN

600' SCALE MAP NO. 43 BLOCK NO. 7

COLUMBIA GATEWAY
PARCEL No. 'T-1'
HOWARD COUNTY, MARYLAND
ELECTION DISTRICT No. 6
CONTRACT No. 24-4382-D

SCALE AS SHOWN
SHEET 2 OF 3

