

**FITTING INFORMATION**

LOCATION	FITTING	NAD '21 COORDINATES
<b>WATERLINE 'A'</b>		
MM STA: 0+00	8" 1/2" HB	N 484218.5654 E 851002.2123
MM STA: 3+22	8" 1/2" HB	N 484174.1171 E 851303.8412
MM STA: 3+51	8" 1/2" HB	N 484186.2481 E 851330.0843
MM STA: 4+03	8" 1/2" HB	N 484234.8512 E 851341.9204
MM STA: 7+05	8" 1/2" HB	N 484240.2201 E 851341.9210
MM STA: 7+12	8" 1/2" HB	N 484216.2084 E 851311.5443
MM STA: 8+01	8" x 6" TEE	N 484238.8846 E 851340.3872
MM STA: 8+86	8" x 6" TEE	N 484442.3552 E 851343.1451
MM STA: 10+16	8" x 6" FHT	N 484504.1314 E 851368.6162
W.M. 0+00	8" 1/2" HB	N 484180.1810 E 851311.6780

**FITTING INFORMATION**

LOCATION	FITTING	NAD '21 COORDINATES
<b>WATERLINE 'B'</b>		
MM STA: 2+01	8" x 6" TEE	N 484222.2621 E 851302.8061
MM STA: 2+61	8" 1/2" HB	N 484172.9408 E 851336.3203
MM STA: 2+41	8" 1/2" HB	N 484166.4064 E 851365.5842
MM STA: 4+25	8" x 6" FHT	N 484241.8060 E 851376.6043
MM STA: 4+25	8" x 6" TEE	N 484241.4103 E 851345.0042

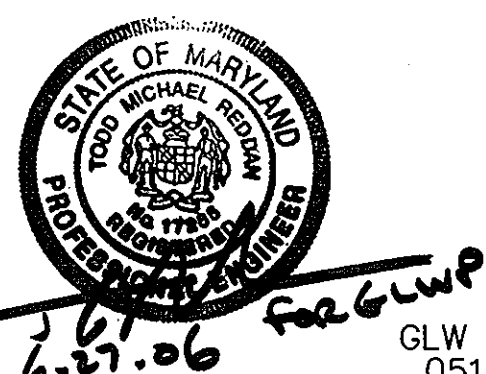
**FITTING INFORMATION**

LOCATION	FITTING	NAD '21 COORDINATES
<b>WATERLINE 'C'</b>		
MM STA: 1+47	8" 1/2" HB	N 484655.2842 E 851133.8116
MM STA: 3+13	8" 1/2" HB	N 484614.1240 E 851614.2143

**LEGEND**

- Water House Connection (PUB, PRIVATE PORTION)
- Water Line (PUBLIC)
- Public Water Easement
- Fire Hydrant (FH)
- Sewer Line (PUBLIC)
- Public Sewer Easement
- Sewer Main (private per SDP)
- Curb & Gutter (per SDP-075)

NOTE: ALL PAVING IS BITUMINOUS.



**INTERSTATE ROUTE 95**  
M.S.R.C. PLAT Nos. 34750 & 34760  
(VARIABLE WIDTH PRINCIPLE ARTERIAL R.O.W.)

DEPARTMENT OF PUBLIC WORKS  
HOWARD COUNTY, MARYLAND  
*Ruth Bauman* 7-25-06  
CHIEF, BUREAU OF UTILITIES DATE

DEPARTMENT OF PLANNING AND ZONING  
HOWARD COUNTY, MARYLAND  
*Michael P. ...* 8/1/06  
CHIEF, DEVELOPMENT ENGINEERING DIVISION DATE

**GLW Gutschick Little & Weber, P.A.**  
CIVIL ENGINEERS, LAND SURVEYORS, LAND PLANNERS, LANDSCAPE ARCHITECTS  
3909 NATIONAL DRIVE - SUITE 250 - BURTOWNSVILLE OFFICE PARK  
BURTOWNSVILLE, MARYLAND, 20886  
TEL: 301-421-4024 FAX: 301-421-4186

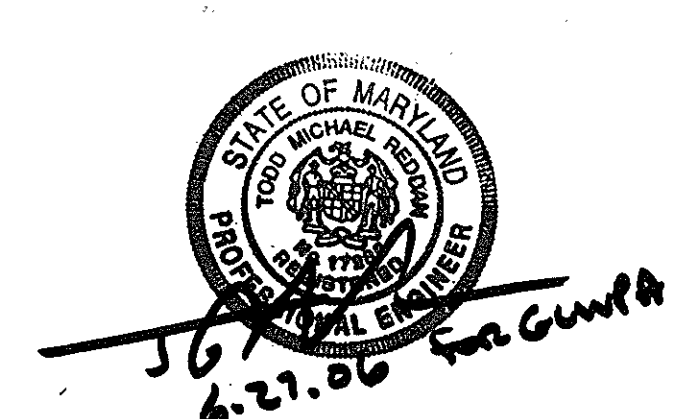
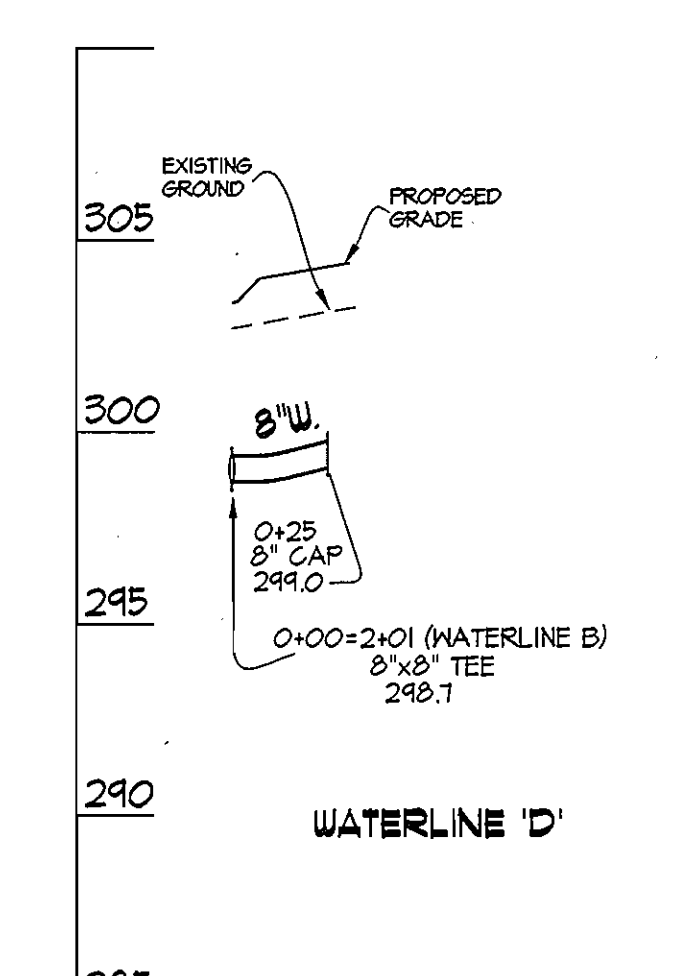
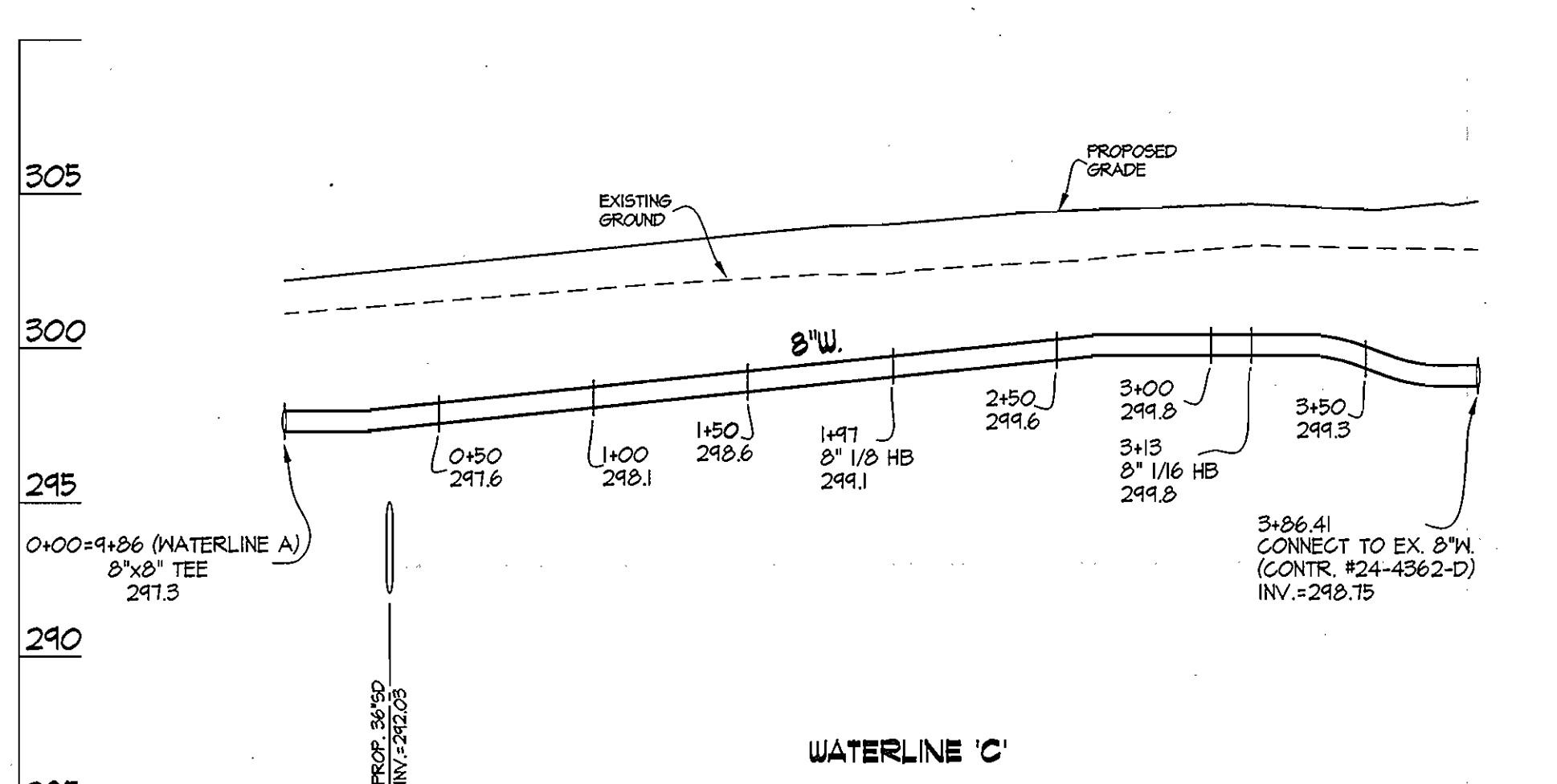
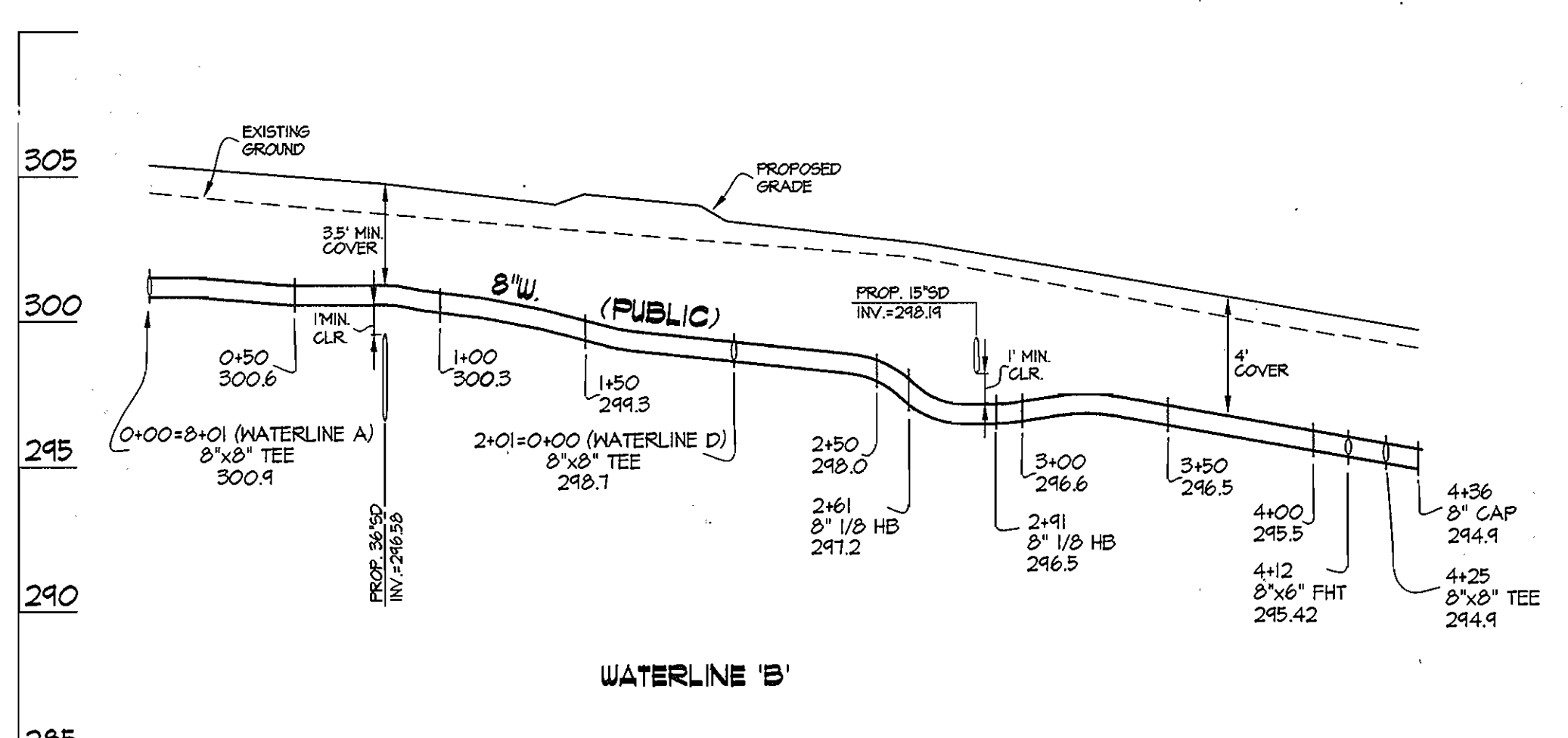
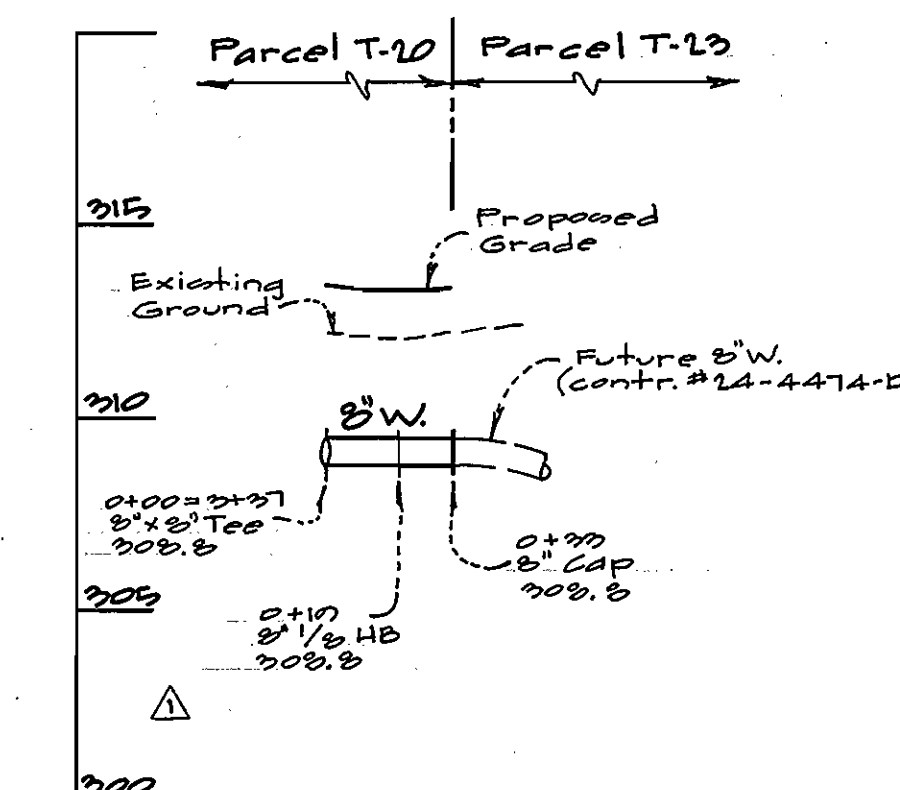
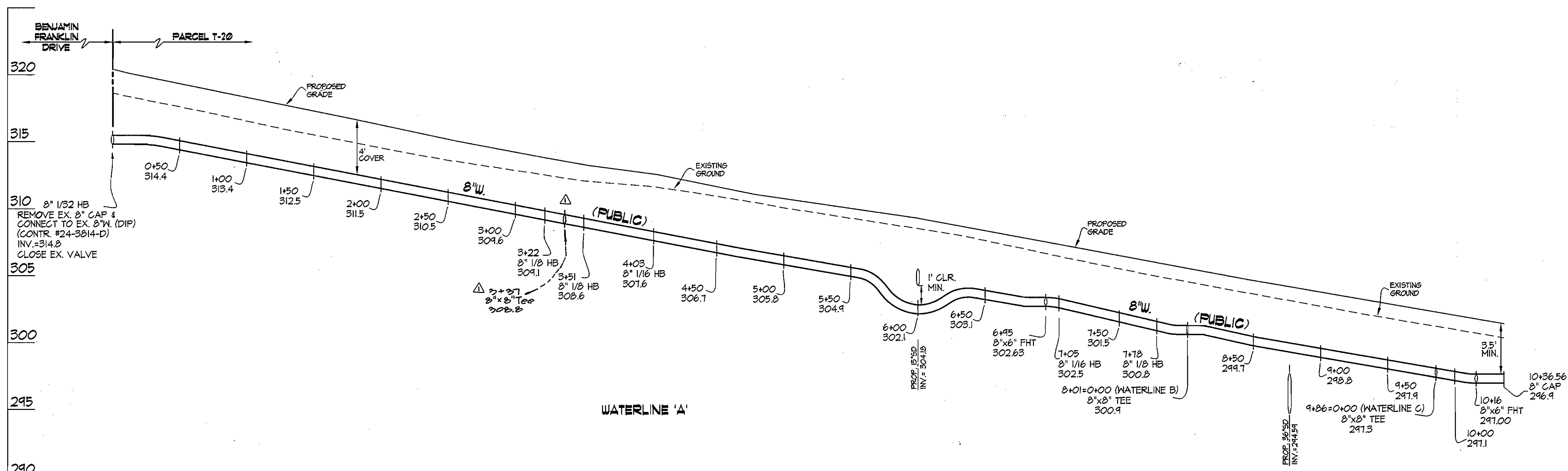
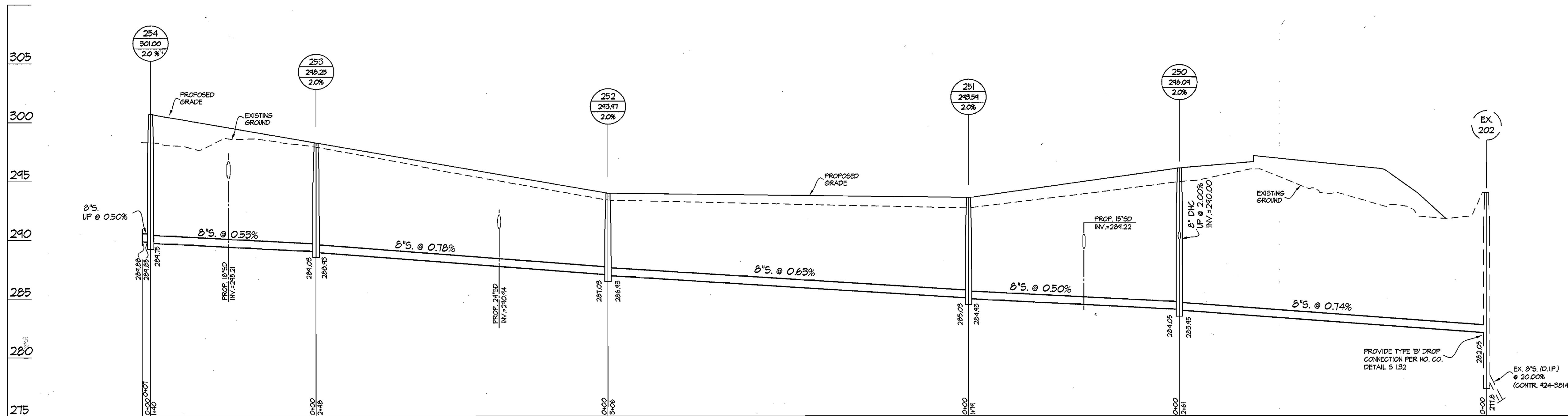
DES: TMR			
DRN: KLP			
CHK: TMR	KC1	As BUILT DATA SHOWN	10/23/07
	ECT	REVISE BUDG & PARKING LAYOUT AND REVISE W/C & S/C LOCATIONS	8/1/07
	KLP	add 8" x 6" tee to waterline 'A' & revise sheet accordingly	6/22/07
DATE: JUNE, 2005	BY: NO	REVISION	DATE

**WATER and SEWER EXTENSION PLAN**  
600' SCALE MAP NO. 43 BLOCK NO. 1

**COLUMBIA GATEWAY**  
PARCEL T-20  
HOWARD COUNTY, MARYLAND  
ELECTION DISTRICT No. 6  
CONTRACT No. 24-4367-D

SCALE  
1" = 50'  
SHEET  
2 OF 3





GLW FILE #05105  
05105-FWS.dwg

DEPARTMENT OF PUBLIC WORKS  
HOWARD COUNTY, MARYLAND  
R.L. Bauman 7-25-06  
CHIEF, BUREAU OF UTILITIES DATE

DEPARTMENT OF PLANNING AND ZONING  
HOWARD COUNTY, MARYLAND  
[Signature] 8/4/06  
CHIEF, DEVELOPMENT ENGINEERING DIVISION DATE

**GLWGUTSCHICK LITTLE & WEBER, P.A.**  
CIVIL ENGINEERS, LAND SURVEYORS, LAND PLANNERS, LANDSCAPE ARCHITECTS  
3909 NATIONAL DRIVE - SUITE 250 - BURTONSVILLE OFFICE PARK  
BURTONSVILLE, MARYLAND 20886  
TEL: 301-421-4024 BALT: 410-880-1820 DC/VA: 301-988-2524 FAX: 301-421-4186

DES: TMR					
DRN: KLP					
CHK: [Signature]					
DATE: JUNE, 2006	klp	△	added 2"x8" tee	0/22/07	
	BY	NO	added 8" W, 15' = 2' 11"		
			REVISION	DATE	

WATER and SEWER EXTENSION PLAN  
600' SCALE MAP NO. 43 BLOCK NO. 1

**COLUMBIA GATEWAY**  
PARCEL T-20  
HOWARD COUNTY, MARYLAND  
ELECTION DISTRICT No. 6  
CONTRACT No. 24-4367-D

SCALE  
1"=5' VERT.  
1"=50' HORZ.  
SHEET  
3 OF 3