

Contract No. 44-4362-D

PROPOSED FACILITIES FOR

Parcel T-18

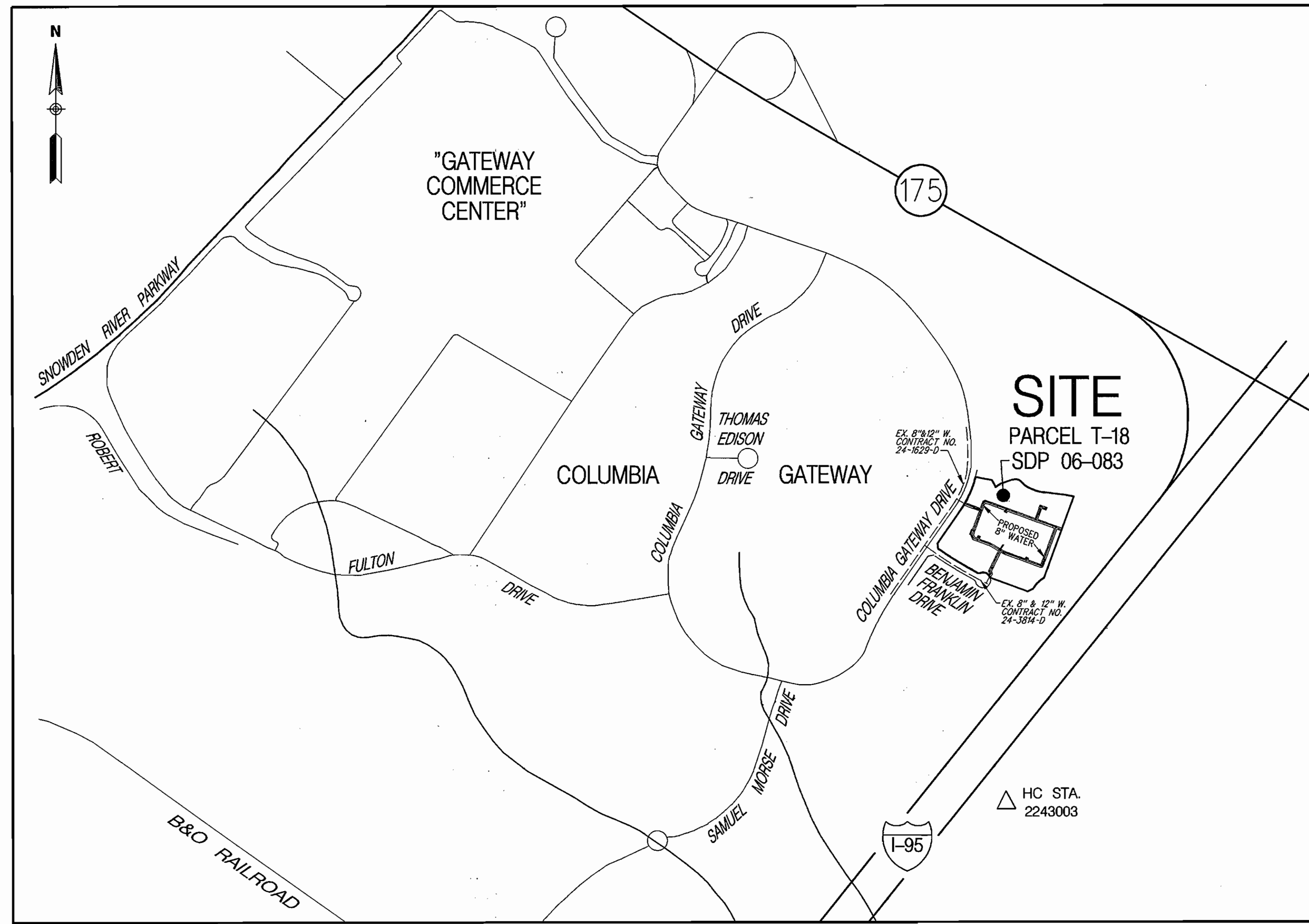
Eastridge at Columbia Gateway

PUBLIC WATER CONSTRUCTION PLANS

Howard County, Maryland Department of Public Works

QUANTITIES				
ITEMS	QUANTITIES ESTIMATED	AS-BUILT		
		QUANTITIES	TYPE	MANUFACTURER/SUPPLIER
6" D.I.P. WATER MAIN	86 LF	86 LF	CL-52	GRIFFIN/BRS.
8" D.I.P. WATER MAIN	2310 LF	2310 LF	CL-52	GRIFFIN/BRS.
6" VALVE & ROADWAY BOX	4	4	R.S.O.R.	MUELLER/BRS
8" VALVE & ROADWAY BOX	11	11	R.S.O.R.	MUELLER/BRS
8" X 6" TEE	4	4	MJ	SIGMA/BRS
8" X 8" TEE	4	4	MJ	SIGMA/BRS
6" FIRE HYDRANT	4	4	MJ	MUELLER/BRS
1/8 HORZ. BEND	8	8	MJ	SIGMA/BRS
1/32 HORZ. BEND	3	3	MJ	SIGMA/BRS
8" SLEEVE AND SPACER	2	2	MJ	SIGMA/BRS
1/16 VERT. BEND	2	2	MJ	SIGMA/BRS

NAME OF UTILITY CONTRACTOR: KINSLET
 SURVEY AND DRAFTING DIVISION AS-BUILT DATE:



Vicinity Map
 SCALE: 1" = 600'

TYPE OF BUILDING: COMMERCIAL OFFICES
 NO. OF LOTS/PARCELS: 1
 NO. OF WATER HOUSE CONNECTIONS: 3 PROPOSED
 NO. OF SEWER HOUSE CONNECTIONS: 1 EXISTING
 DRAINAGE AREA: LITTLE PATUXENT
 TREATMENT PLANT: LITTLE PATUXENT WATER RECLAMATION PLANT, SAVAGE, HOWARD COUNTY

WATER CODE: E-06
 TEST GRADIENT: 700
 SEWER CODE: 3380000

- ### General Notes
- Approximate locations of existing mains are shown. The contractor shall take all necessary precautions to protect existing mains and services and maintain uninterrupted service. Any damage incurred shall be repaired immediately to the satisfaction of the Engineer at the contractor's expense.
 - Topographic field surveys were performed by DuVal and Associates, P.A. in November 2005.
 - Horizontal and Vertical Survey Controls:
 The coordinate information shown on the drawings are based on Maryland State Reference System NAD'83/91. All vertical controls provided on the drawings based on Howard County Control Monuments 2243002 and 2243003.
 - All pipe elevations shown are invert elevations unless otherwise noted on the plans.
 - Clear all utilities by a minimum of 12 inches. Clear all poles by 5'-0" minimum or tunnel as required unless otherwise noted. The owner has contacted the utility companies and has made arrangements for bracing of poles as shown on the drawings. In the event the contractor's work requires the bracing of additional poles, any cost incurred by the owner for the bracing of additional poles or damages shall be deducted from monies owed the contractor. The contractor shall coordinate with the utility companies to schedule the bracing of the poles.
 - For details not shown on the drawing, and for material and construction methods, use Howard County Design Manual, Volume IV, Standard Specifications and Details for Construction (Latest Edition). The contractor shall have a copy of Volume IV on the job.
 - Where test pits have been made on existing utilities, they are noted by the symbol at the locations of the test pits. A note or notes containing the results of the test pit or pits is included on the drawings. Existing utilities in the vicinity of the proposed work for which test pits have not been dug shall be located by the contractor two weeks in advance of construction operations at his own expense.
 - The contractor shall notify the following utility companies or agencies at least five working days before starting work shown on these plans:
 ATT 1-800-252-1133
 BGE (Construction Services) 410-850-4620
 BGE (Emergency) 410-685-1400
 Bureau of Utilities 410-313-4900
 Colonial Pipeline Co. 410-795-1390
 Miss Utility 1-800-257-7777
 State Highway Administration 410-531-5533
 Verizon 1-800-743-0033 / 410-224-9210
 - Trees and shrubs are to be protected from damage to the maximum extent. Trees and shrubs located within the construction strip are not to be removed or damaged by the contractor.
 - The contractor shall remove trees, stumps and roots along the line of excavation. Payment for such removal shall be included in the unit price bid for construction of the main.
 - The contractor shall notify the Bureau of Highways, Howard County, at 410-313-7450 at least five working days before open cutting or boring/jacking of any County road for laying water/sewer mains or house connections. The approval of these drawings will constitute compliance with DPW requirements per Section 18.14(a) of the Howard County Code.

SEDIMENT CONTROL MEASURES WILL BE IMPLEMENTED IN ACCORDANCE WITH THE APPROVED SEDIMENT AND EROSION CONTROL PLAN PER SDP 06-083

REVIEWED FOR HOWARD SOIL CONSERVATION DISTRICT AND MEETS TECHNICAL REQUIREMENT

 DATE: 5-23-06

U.S.D.A. NATURAL RESOURCES CONSERVATION SERVICE
 THIS DEVELOPMENT PLAN IS APPROVED FOR SOIL EROSION AND SEDIMENT CONTROL BY THE HOWARD COUNTY CONSERVATION DISTRICT.
 APPROVED:

 HOWARD S.C.D. DATE: 5-23-06

SEDIMENT CONTROL MEASURES WILL BE IMPLEMENTED IN ACCORDANCE WITH SECTION 219 OF THE SPECIFICATIONS AND SITE DEVELOPMENT PLAN SDP 06-083

DEPARTMENT OF PUBLIC WORKS
 HOWARD COUNTY, MARYLAND

 CHIEF - BUREAU OF UTILITIES - DATE: 5-9-06

DEPARTMENT OF PLANNING & ZONING
 HOWARD COUNTY, MARYLAND

 CHIEF - DEVELOPMENT ENGINEERING DIVISION - DATE: 6/5/06

Matis Warfield
 consulting engineers
 10540 York road suite m
 hunt valley, maryland 21030
 phone 410-683-7004
 facsimile 410-683-1798
 www.matiswarfield.com



DESIGNED BY:	R.L.N.			
DRAWN BY:	R.L.N.			
CHECKED BY:	J.E.M.			
DATE:	4/12/06			

SHEET INDEX	
NO.	SHEET TITLE
1	COVER SHEET
2	WATER PLAN
3	WATER PROFILES

Water Cover Sheet

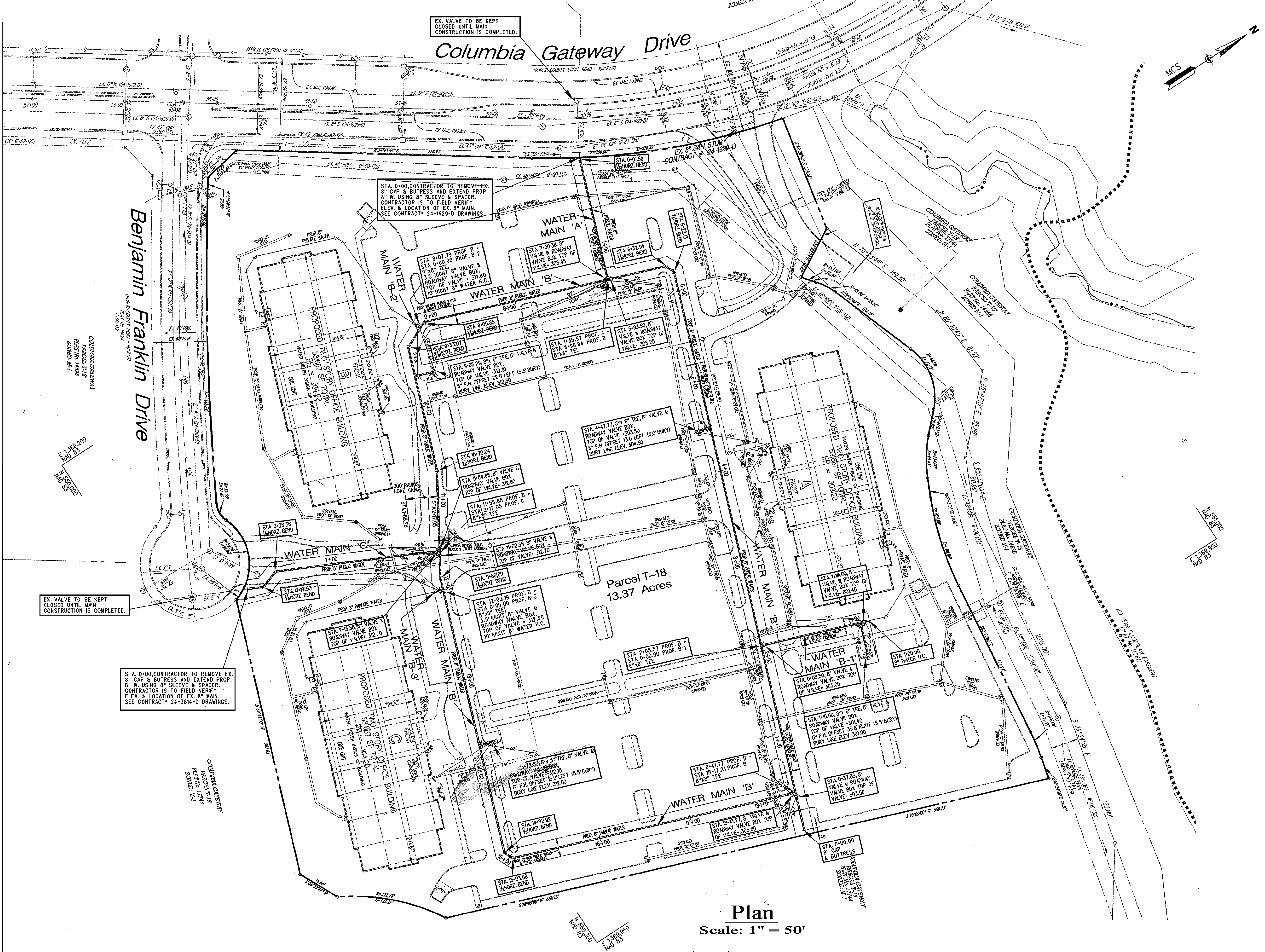
600 SCALE MAP NO. 43 BLOCK NO. 2

Developer/Contract Purchaser
AAK Eastridge, LLC.
 J. Michael Abrams, Managing Member
 Abrams Development Group
 5850 Waterloo Road Suite 230
 Columbia, Maryland 21045
 Phone (410) 461-4340
 Fax (410) 461-5709

Proposed Water Facilities for Parcel T-18 Eastridge at Columbia Gateway

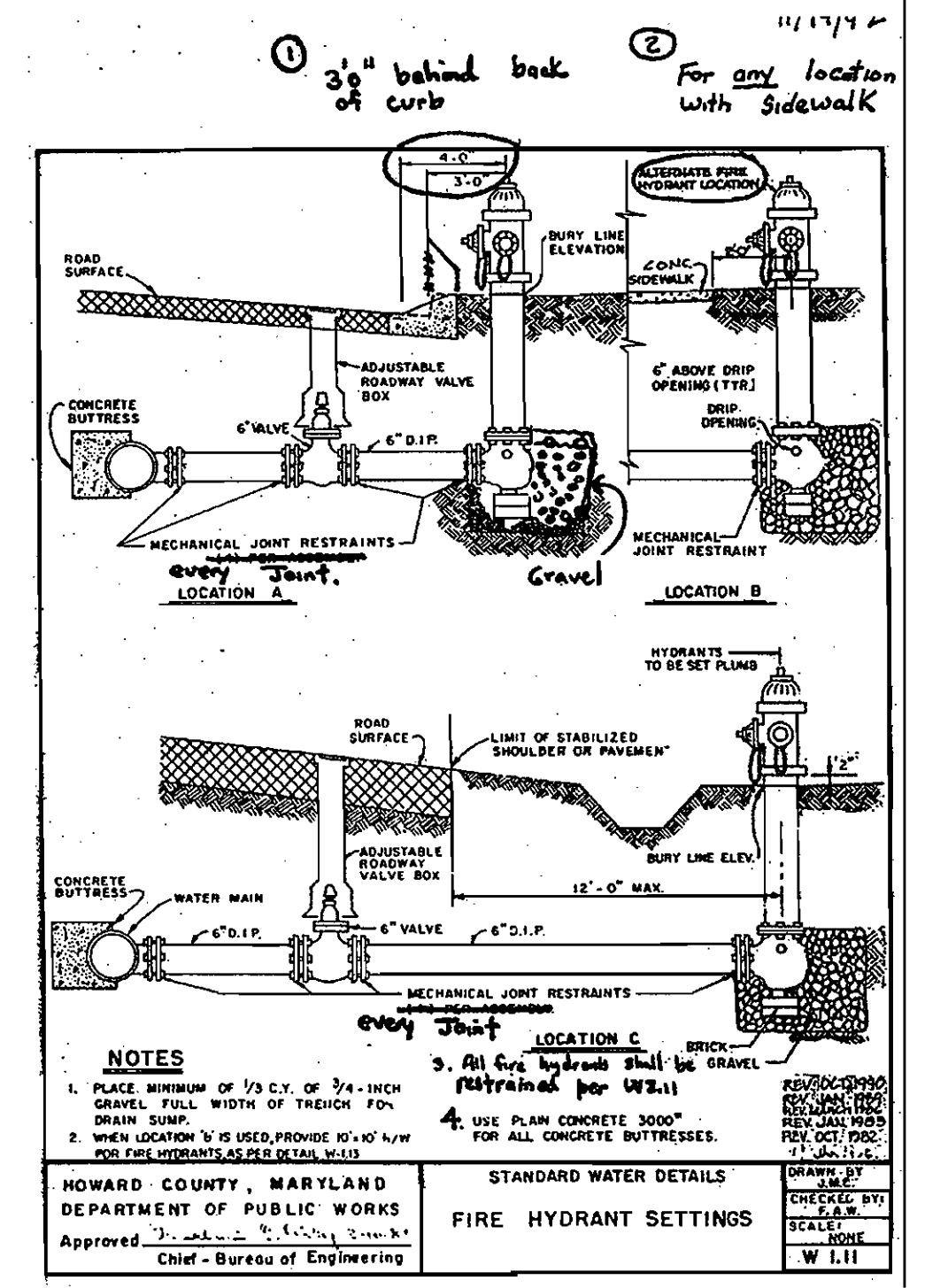
CONTRACT NO. 44-4362-D 6th Election District

SCALE AS SHOWN
 SHEET 1 OF 3



Plan
Scale: 1" = 50'

NOTE: HYDRANTS SHALL BE PLACED PER DETAIL W 1.11



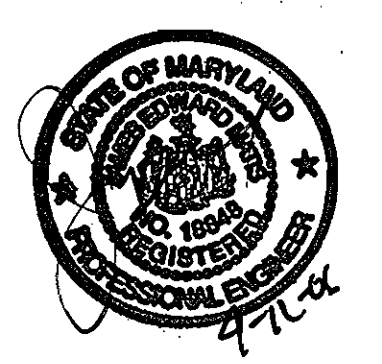
Developer/Contract Purchaser
AAK Eastridge, LLC.
J. Michael Abrams, Managing Member
Abrams Development Group
5850 Waterloo Road Suite 230
Columbia, Maryland 21045
Phone (410) 461-4340
Fax (410) 461-5709

SEE SDP 06-083

DEPARTMENT OF PUBLIC WORKS
HOWARD COUNTY, MARYLAND
Rdt Benjamin 5-8-06
CHIEF - BUREAU OF UTILITIES - DATE

DEPARTMENT OF PLANNING & ZONING
HOWARD COUNTY, MARYLAND
[Signature] 6/5/06
CHIEF - DEVELOPMENT ENGINEERING DIVISION - DATE

Matis Warfield
consulting engineers
10540 York Road Suite M
Hunt Valley, Maryland 21030
Phone 410-683-7004
Facsimile 410-683-1798
www.matiswarfield.com

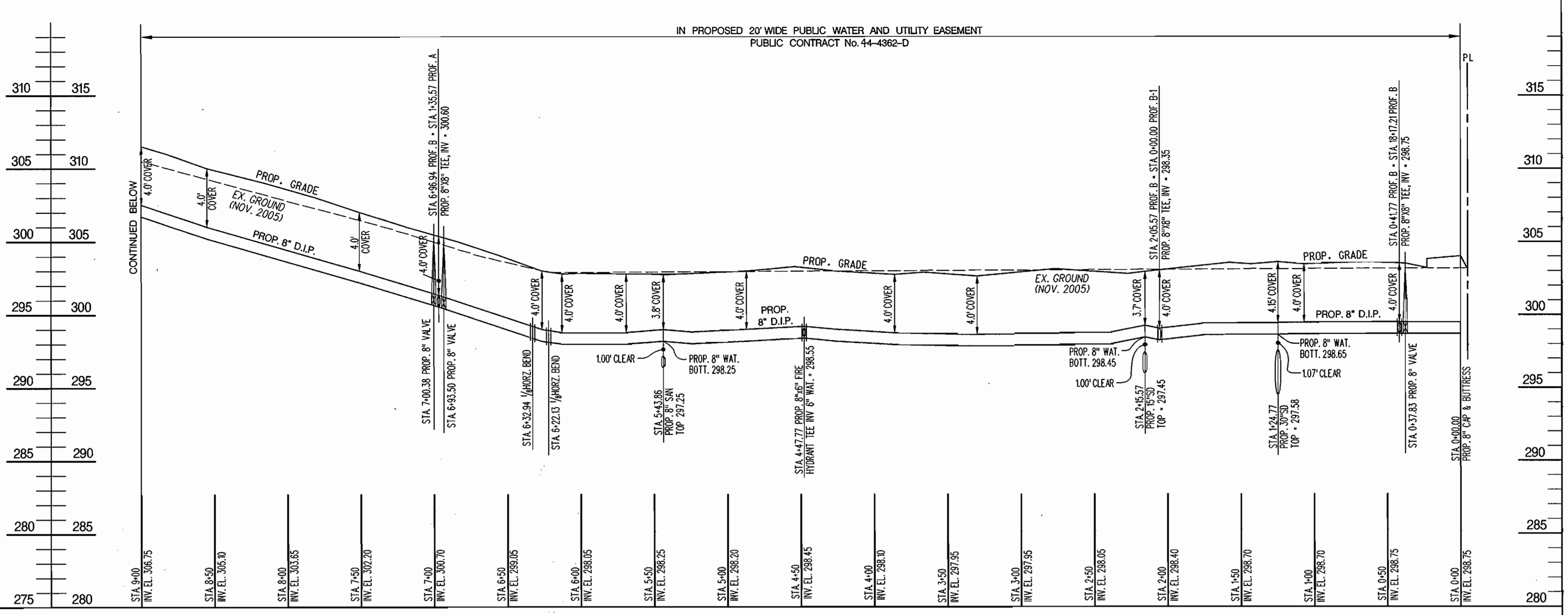
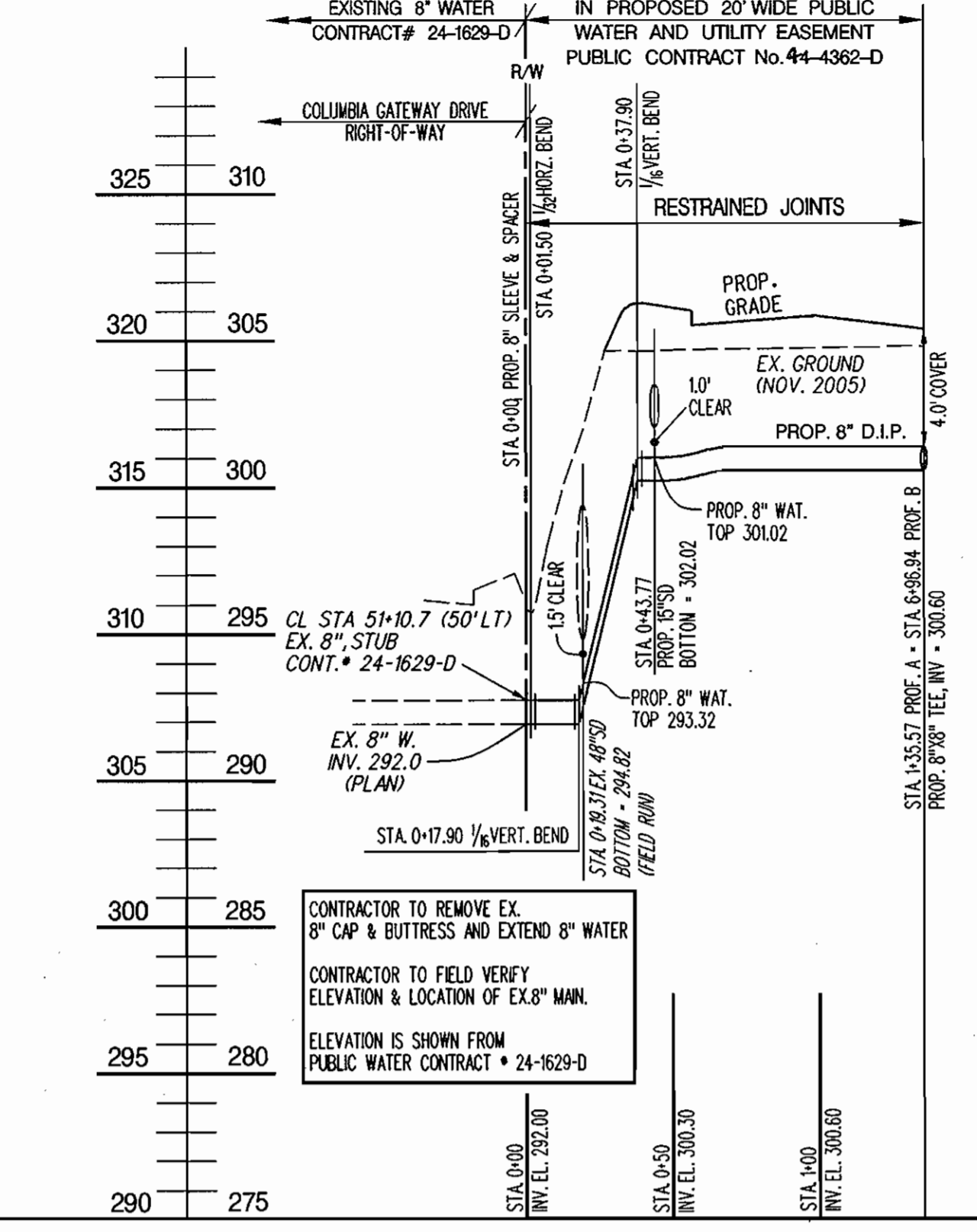
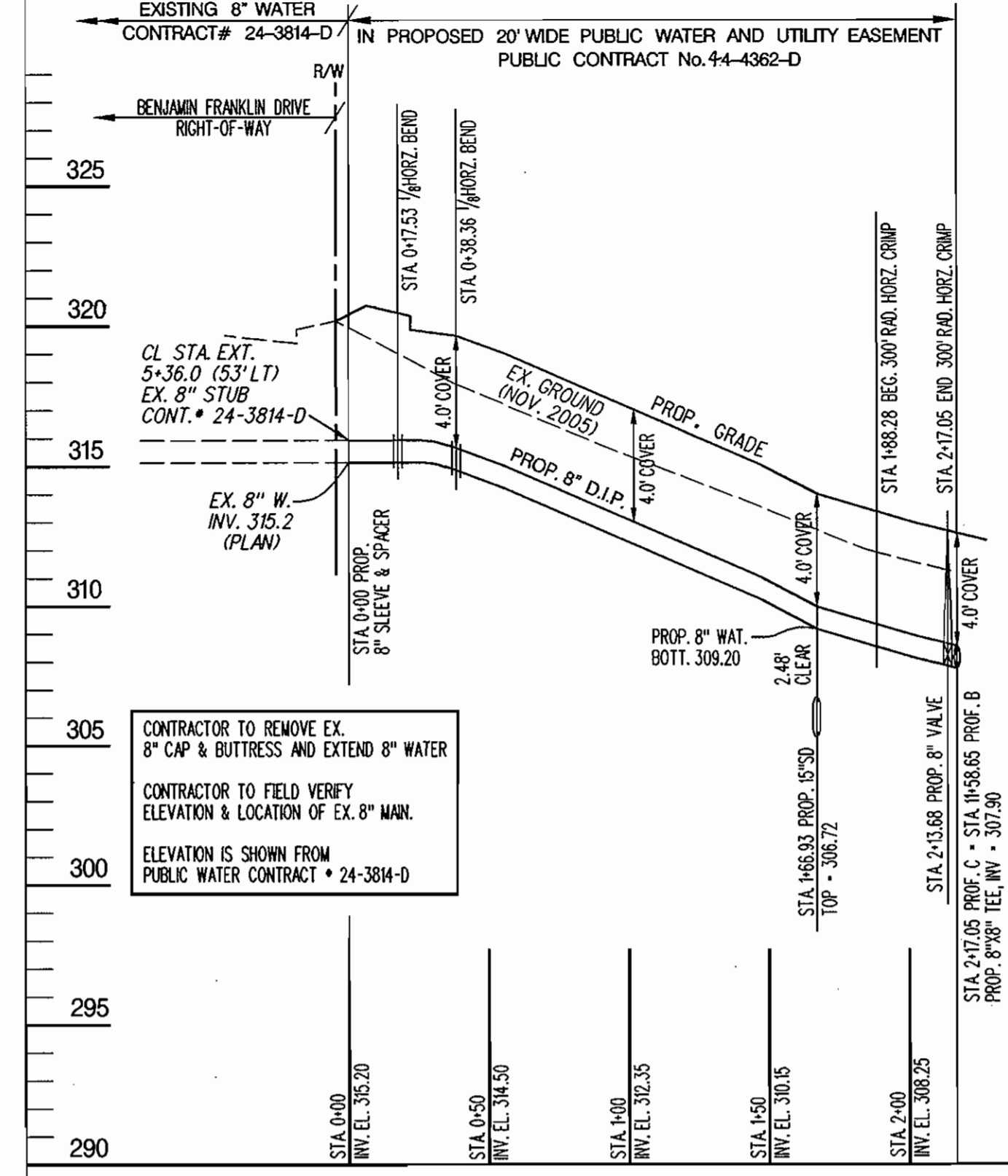


DESIGNED BY:	R.L.N.	DATE:	4/12/06
DRAWN BY:	R.L.N.	BY:	K.C.I.
CHECKED BY:	J.E.M.	NO.	1
		REVISION:	ASBUILT DATA
		DATE:	[Signature]

Water Plan	
600 SCALE MAP NO. 43	BLOCK NO. 2

PUBLIC WATER
Proposed Water Facilities for Parcel T-18 Eastridge at Columbia Gateway
CONTRACT NO. 44-4362-D
6th Election District

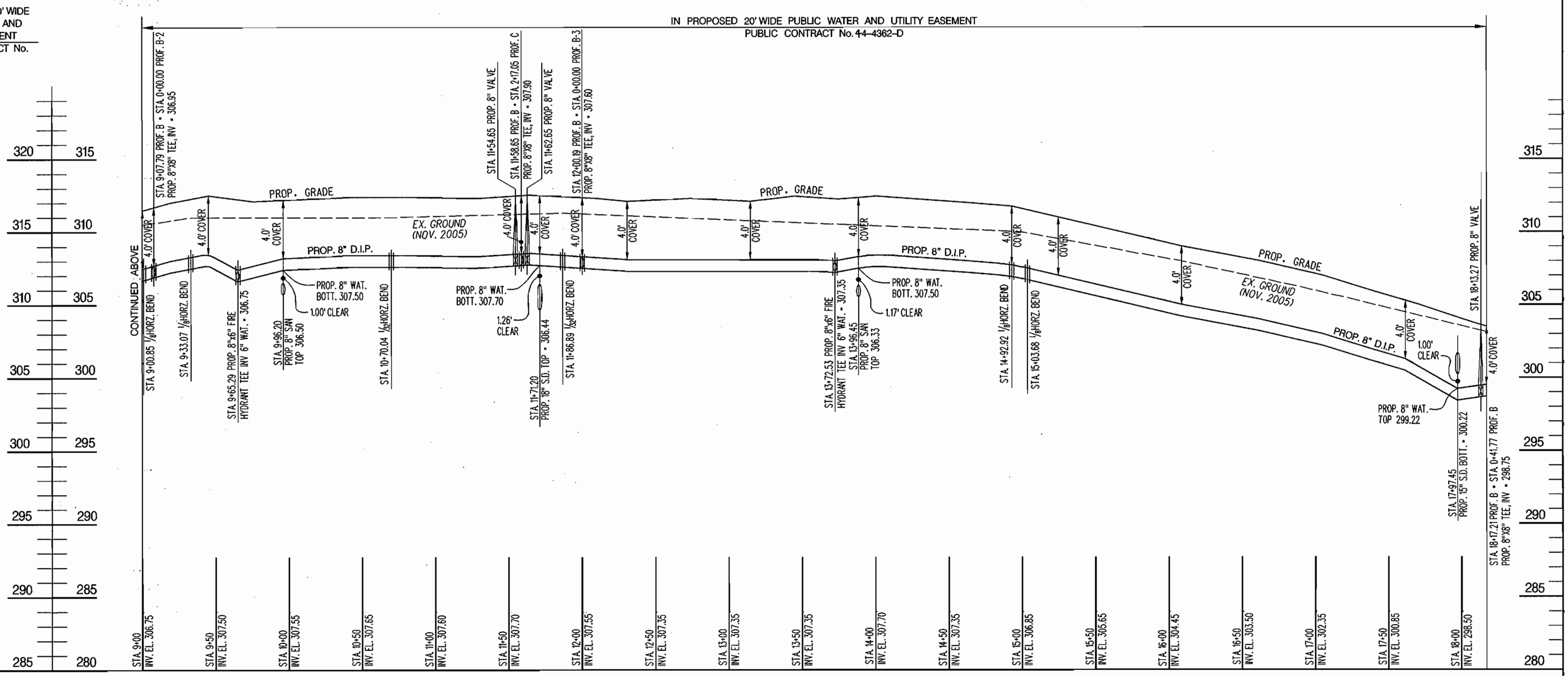
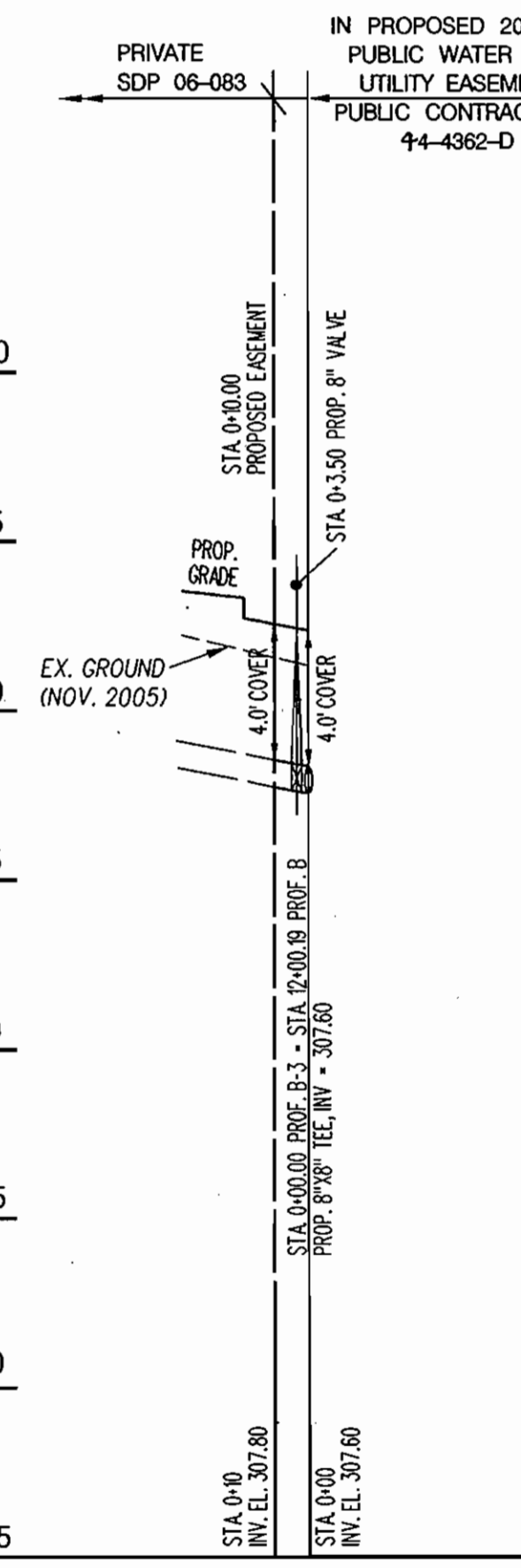
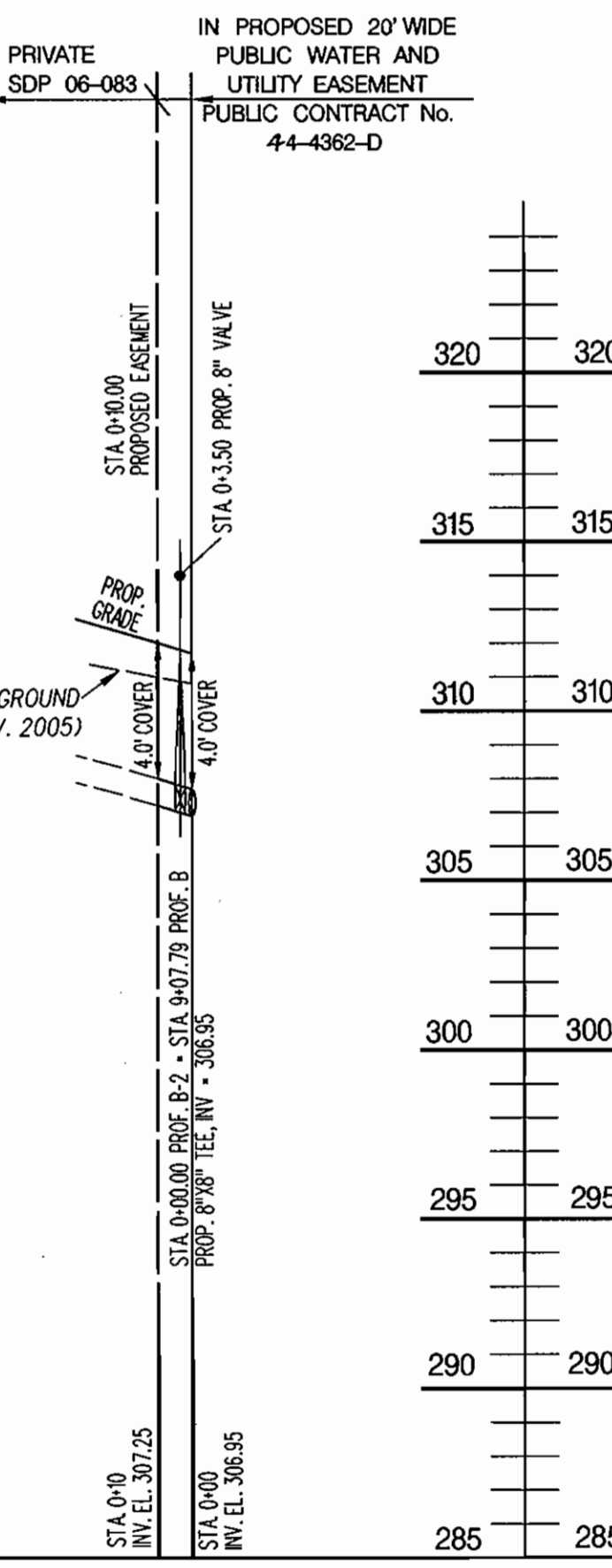
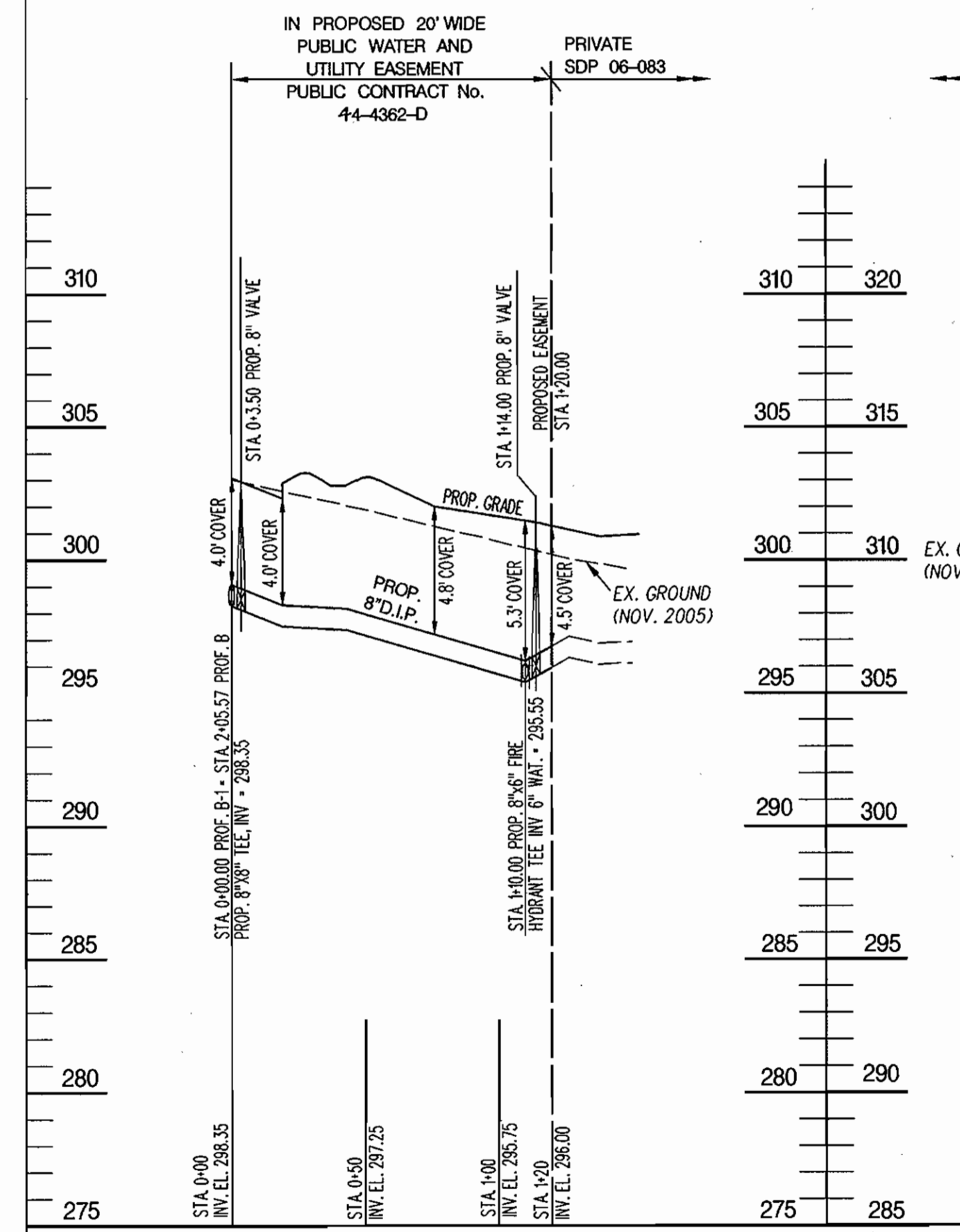
SCALE: 1" = 50'
SHEET 2 OF 3



PROP. WATER MAIN PROFILE 'C'
Scale: Horz: 1" = 50'
Vert: 1" = 5'

PROP. WATER MAIN PROFILE 'A'
Scale: Horz: 1" = 50'
Vert: 1" = 5'

PROP. WATER MAIN PROFILE 'B'
Scale: Horz: 1" = 50'
Vert: 1" = 5'



PROP. WATER MAIN PROFILE 'B-1'
Scale: Horz: 1" = 50'
Vert: 1" = 5'

PROP. WATER MAIN PROFILE 'B-2'
Scale: Horz: 1" = 50'
Vert: 1" = 5'

PROP. WATER MAIN PROFILE 'B-3'
Scale: Horz: 1" = 50'
Vert: 1" = 5'

PROP. WATER MAIN PROFILE 'B'
Scale: Horz: 1" = 50'
Vert: 1" = 5'

Developer/Contract Purchaser
AAK Eastridge, LLC.
J. Michael Abrams, Managing Member
Abrams Development Group
5850 Waterloo Road Suite 230
Columbia, Maryland 21045
Phone (410) 461-4340
Fax (410) 461-5709

DEPARTMENT OF PUBLIC WORKS
HOWARD COUNTY, MARYLAND
Robert Benjamin 5/9/04
CHIEF - BUREAU OF UTILITIES - DATE

DEPARTMENT OF PLANNING & ZONING
HOWARD COUNTY, MARYLAND
Michael J. Eastridge 4/5/06
CHIEF - DEVELOPMENT ENGINEERING DIVISION - DATE

Matis Warfield
consulting engineers
10540 York Road, Suite M
Hunt Valley, Maryland 21030
Phone 410-683-7004
Facsimile 410-683-1798
www.matiswarfield.com



DESIGNED BY:	R.L.N.			
DRAWN BY:	R.L.N.			
CHECKED BY:	J.E.M.			
DATE:	4/12/06			
BY	NO.	REVISION	DATE	

Water Profiles
600 SCALE MAP NO. 43 BLOCK NO. 2

PUBLIC WATER
Proposed Water Facilities for Parcel T-18 Eastridge at Columbia Gateway
CONTRACT NO. 44-4362-D 6th Election District
SCALE AS SHOWN
SHEET 3 OF 3