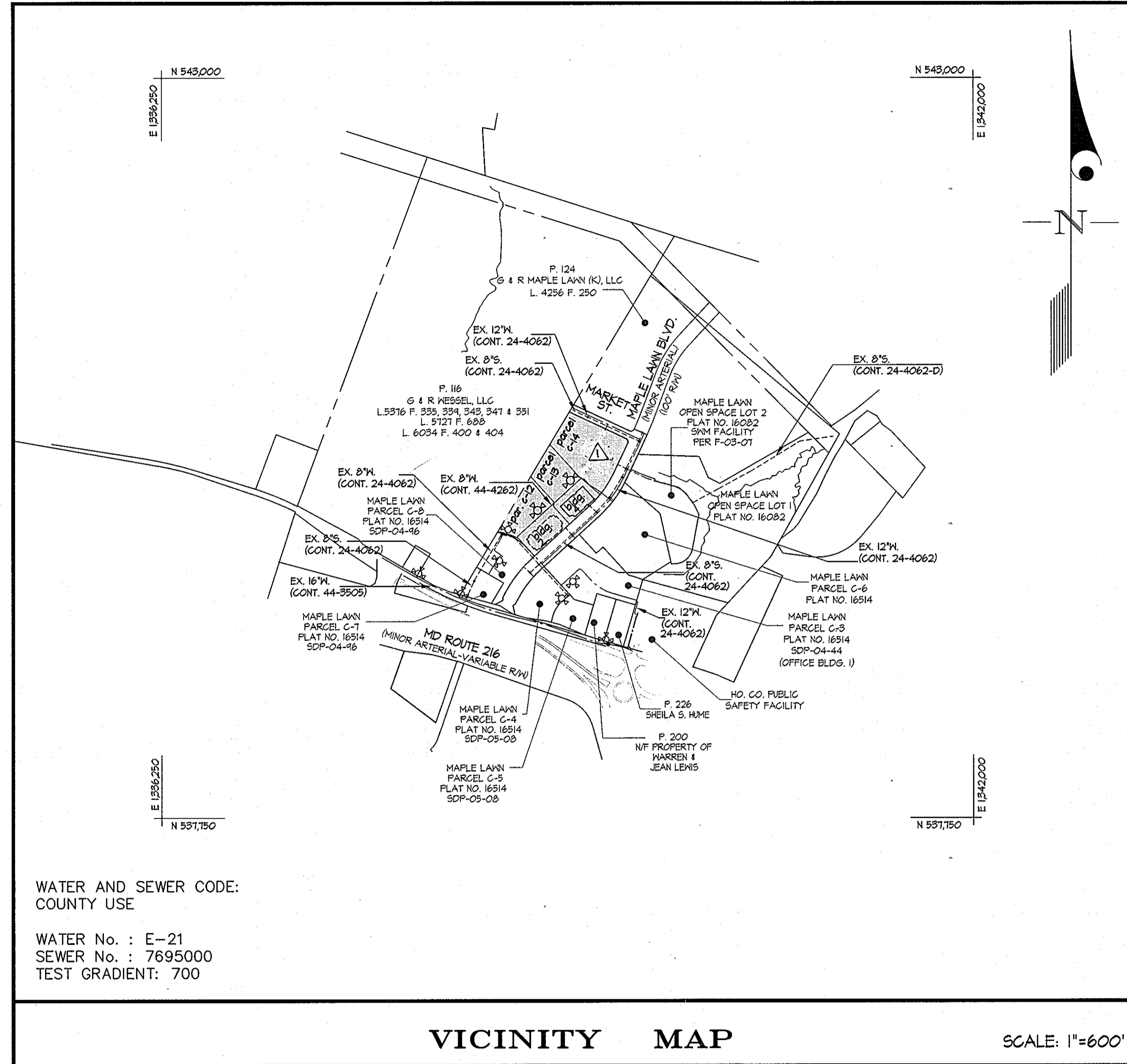


QUANTITIES				
ITEMS	QUANTITIES ESTIMATED	AS-BUILT		
		QUANTITIES	TYPE	MANUFACTURER/SUPPLIER
<del>CHIMNEY</del>	<del>10 EA.</del>			
<del>WATER MAIN</del>	<del>500 LF.</del>			
<del>SEWER MAIN</del>	<del>1 EA.</del>			
<del>SEWER MANHOLE</del>	<del>1 EA.</del>			
<del>SEWER MANHOLE</del>	<del>1 EA.</del>			
<del>SEWER MANHOLE</del>	<del>1 EA.</del>			
<del>SEWER MANHOLE</del>	<del>1 EA.</del>			
<del>SEWER MANHOLE</del>	<del>1 EA.</del>			
SEWER MANHOLE	1 EA.	1 EA.	PRE-CAST	ATLANTIC CONCRETE

NAME OF UTILITY CONTRACTOR: GRAY & SON

AS-BUILT  
JANUARY 20, 2012

SURVEY AND DRAFTING DIV. CHECKBOX AS-BUILT DATE



WATER AND SEWER CODE:  
COUNTY USE

WATER No. : E-21  
SEWER No. : 7695000  
TEST GRADIENT: 700

VICINITY MAP

SCALE: 1"=600'

TYPE OF BUILDING	OFFICE
NUMBER OF UNITS	1
NUMBER OF S.H.C.'s	N/A (PER SDP-06-061)
NUMBER OF W.H.C.'s	0 - $\Delta$
DRAINAGE AREA	LITTLE PATUXENT
TREATMENT PLANT	LITTLE PATUXENT

GENERAL NOTES

PART I

- APPROXIMATE LOCATIONS OF EXISTING MAINS ARE SHOWN. THE CONTRACTOR SHALL TAKE ALL NECESSARY PRECAUTIONS TO PROTECT EXISTING MAINS AND SERVICES AND MAINTAIN UNINTERRUPTED SERVICE. ANY DAMAGE INCURRED SHALL BE REPAIRED IMMEDIATELY TO THE SATISFACTION OF THE ENGINEER AT THE CONTRACTOR'S EXPENSE.
- TOPOGRAPHIC FIELD SURVEYS WERE PERFORMED ON 11/17/05 BY GUTSCHICK, LITTLE & WEBER, P.A.
- HORIZONTAL AND VERTICAL SURVEY CONTROLS:

THE COORDINATES SHOWN ON THE DRAWINGS ARE BASED ON MARYLAND STATE REFERENCE SYSTEM NAD 83/11 AS PROJECTED BY HOWARD COUNTY GEODETIC CONTROL STATIONS No. 416A AND No. 46B2.

ALL VERTICAL CONTROLS ARE BASED ON NAVD 83. VERTICAL CONTROLS PROVIDED ON DRAWINGS ARE STANDARD DISC ON CONCRETE MONUMENT.

- ALL PIPE ELEVATIONS SHOWN ARE INVERT ELEVATIONS UNLESS OTHERWISE NOTED ON THE PLANS.
- CLEAR ALL UTILITIES BY A MINIMUM OF 12 INCHES. CLEAR ALL POLES BY 5'-0" MINIMUM OR TUNNEL AS REQUIRED UNLESS OTHERWISE NOTED. THE OWNER HAS CONTACTED THE UTILITY COMPANIES AND HAS MADE ARRANGEMENTS FOR BRACING OF POLES AS SHOWN ON THE DRAWINGS. IN THE EVENT THE CONTRACTOR'S WORK REQUIRES BRACING OF ADDITIONAL POLES, ANY COST INCURRED BY THE OWNER FOR THE BRACING OF ADDITIONAL POLES OR DAMAGES SHALL BE DEDUCTED FROM MONIES OWNED THE CONTRACTOR. THE CONTRACTOR SHALL COORDINATE WITH THE UTILITY COMPANIES TO SCHEDULE THE BRACING OF THE POLES.
- FOR DETAILS NOT SHOWN ON THE DRAWINGS, AND FOR MATERIALS AND CONSTRUCTION METHODS, USE HOWARD COUNTY DESIGN MANUAL, VOLUME IV, STANDARD SPECIFICATIONS AND DETAILS FOR CONSTRUCTION (LATEST EDITION). THE CONTRACTOR SHALL HAVE A COPY OF VOLUME IV ON THE JOB.

WHERE TEST PITS HAVE BEEN MADE ON EXISTING UTILITIES, THEY ARE NOTED BY THE SYMBOL  $\Delta$  AT THE LOCATIONS OF THE TEST PITS. A NOTE OR NOTES CONTAINING THE RESULTS OF THE TEST PIT OR PITS IS INCLUDED ON THE DRAWINGS. EXISTING UTILITIES IN THE VICINITY OF THE PROPOSED WORK FOR WHICH TEST PITS HAVE NOT BEEN DUG SHALL BE LOCATED BY THE CONTRACTOR TWO WEEKS IN ADVANCE OF CONSTRUCTION OPERATIONS AT HIS OWN EXPENSE.

THE CONTRACTOR SHALL NOTIFY THE FOLLOWING UTILITY COMPANIES OR AGENCIES AT LEAST FIVE WORKING DAYS BEFORE STARTING WORK ON THESE PLANS:

AT&T	1-800-252-1193
BGE (CONTRACTOR SERVICES)	410-850-4620
BGE (UNDER GROUND DAMAGE CONTROL)	410-685-1400
BUREAU OF UTILITIES	410-313-4400
COLONIAL PIPELINE CO.	410-715-1940
MISS UTILITY	1-800-251-7771
STATE HIGHWAY ADMINISTRATION	410-531-5533
VERIZON	1-800-743-0033 / 410-224-4210

- TREES AND SHRUBS ARE TO BE PROTECTED FROM DAMAGE TO THE MAXIMUM EXTENT. TREES AND SHRUBS LOCATED WITHIN THE CONSTRUCTION AREA STRIP ARE NOT TO BE REMOVED OR DAMAGED BY THE CONTRACTOR.
- THE CONTRACTOR SHALL REMOVE TREES, STUMPS AND ROOTS ALONG THE LINE OF EXCAVATION. PAYMENT FOR SUCH REMOVAL SHALL BE INCLUDED IN THE UNIT PRICE BID FOR CONSTRUCTION OF THE MAIN.
- THE CONTRACTOR SHALL NOTIFY THE BUREAU OF HIGHWAYS, HOWARD COUNTY, AT (410)-313-7450 AT LEAST FIVE WORKING DAYS BEFORE OPEN CUTTING OR BORING/JACKING OF ANY COUNTY ROAD FOR LAYING WATER/SEWER MAINS OR HOUSE CONNECTIONS. THE APPROVAL OF THESE DRAWINGS WILL CONSTITUTE COMPLIANCE WITH DFH REQUIREMENTS PER SECTION 18.114(a) OF THE HOWARD COUNTY CODE.

PART II - WATER

- ALL MAINS SHALL BE D.I.P. CLASS 52 UNLESS OTHERWISE NOTED.
- TOPS OF ALL WATER MAINS SHALL HAVE A MINIMUM OF 3'-6" OF COVER UNLESS OTHERWISE NOTED.
- VALVES ADJACENT TO TEES SHALL BE STRAPPED TO TEES.
- ALL FITTINGS SHALL BE BUTTRESSED OR ANCHORED WITH CONCRETE IN ACCORDANCE WITH STANDARD DETAILS UNLESS OTHERWISE PROVIDED FOR ON THE DRAWINGS.
- FIRE HYDRANTS SHALL BE SET TO THE BURY LINE ELEVATIONS SHOWN ON THE DRAWINGS. ALL FIRE HYDRANTS SHALL BE INSTALLED IN ACCORDANCE WITH STANDARD DETAILS. THE SOIL AROUND THE FIRE HYDRANT SHALL BE COMPACTED IN ACCORDANCE WITH SECTION 1000 AND SECTION 1005 OF THE STANDARD SPECIFICATIONS.
- THE CONTRACTOR SHALL NOT OPERATE ANY WATER MAIN VALVES ON THE EXISTING WATER SYSTEM.

PART III - SEWER

- ALL SEWER MAINS SHALL BE D.I.P. OR P.V.C. UNLESS OTHERWISE NOTED.
- ALL MANHOLES SHALL BE 4'-0" INSIDE DIAMETER UNLESS OTHERWISE NOTED.
- FORCE MAINS SHALL BE D.I.P. ONLY.
- MANHOLES SHOWN WITH THE 12" AND 16" WALLS ARE FOR BRICK MANHOLES ONLY.
- MANHOLES DESIGNATED W.T. IN PLAN AND PROFILE SHALL HAVE WATERTIGHT FRAME AND COVER, STANDARD DETAIL 0552. WHERE WATERTIGHT MANHOLE FRAMES AND COVERS ARE USED, SET TOP OF FRAME 1'-6" ABOVE FINISHED GRADE UNLESS OTHERWISE NOTED ON THE DRAWINGS.
- HOUSE(S) WITH THE SYMBOL "C.N.S." INDICATES THE CELLAR CANNOT BE SERVED.

OWNER/DEVELOPER:  
618 MAPLE LAWN, INC. et. al.  
SUITE 410, WOODHOLME CENTER  
1824 REISTERSTOWN ROAD  
BALTIMORE, MD 21286  
Attn: CHARLIE O'DONOVAN  
410-484-8400

GLW FILE #03054  
96079\03054\Public\Wat\03054-fes-cover.dwg

SEDIMENT CONTROL MEASURES WILL BE IMPLEMENTED IN ACCORDANCE WITH SECTION 219 OF THE SPECIFICATIONS & WITH THE SEDIMENT & EROSION CONTROL DRAWINGS FOR SDP-06-061.

REVIEWED FOR HOWARD SOIL CONSERVATION DISTRICT AND MEETS TECHNICAL REQUIREMENT.

*John M. Ryan* 4/4/06  
SIGNATURE DATE  
U.S.D.A. NATURAL RESOURCES CONSERVATION SERVICE

THIS DEVELOPMENT PLAN IS APPROVED FOR SOIL EROSION AND SEDIMENT CONTROL BY THE HOWARD SOIL CONSERVATION DISTRICT.

APPROVED:  
*John R. Robertson* 4/4/06  
HOWARD S.C.D. DATE

CONTRACT No. 24-4342-D  
MAPLE LAWN FARMS  
OFFICE BUILDING No. 4  
BUSINESS DISTRICT  
PARCEL C-12 thru C-14 (resubdivision of parcel c-9)  
PLAT No. 16624 (parcel c-9)  
HOWARD COUNTY, MARYLAND  
DEPARTMENT OF PUBLIC WORKS

DEPARTMENT OF PUBLIC WORKS  
HOWARD COUNTY, MARYLAND  
*Ruth Bauman* 3-29-06  
CHIEF, BUREAU OF UTILITIES DATE

DEPARTMENT OF PLANNING AND ZONING  
HOWARD COUNTY, MARYLAND  
*John P. Bauman* 4/6/06  
CHIEF, DEVELOPMENT ENGINEERING DIVISION DATE

GLW GUTSCHICK LITTLE & WEBER, P.A.  
CIVIL ENGINEERS, LAND SURVEYORS, LAND PLANNERS, LANDSCAPE ARCHITECTS  
3009 NATIONAL DRIVE - SUITE 250 - BURTONSVILLE OFFICE PARK  
BURTONSVILLE, MARYLAND 20866  
TEL: 301-421-4024 BAL: 410-880-1820 DC/VA: 301-989-2524 FAX: 301-421-4186

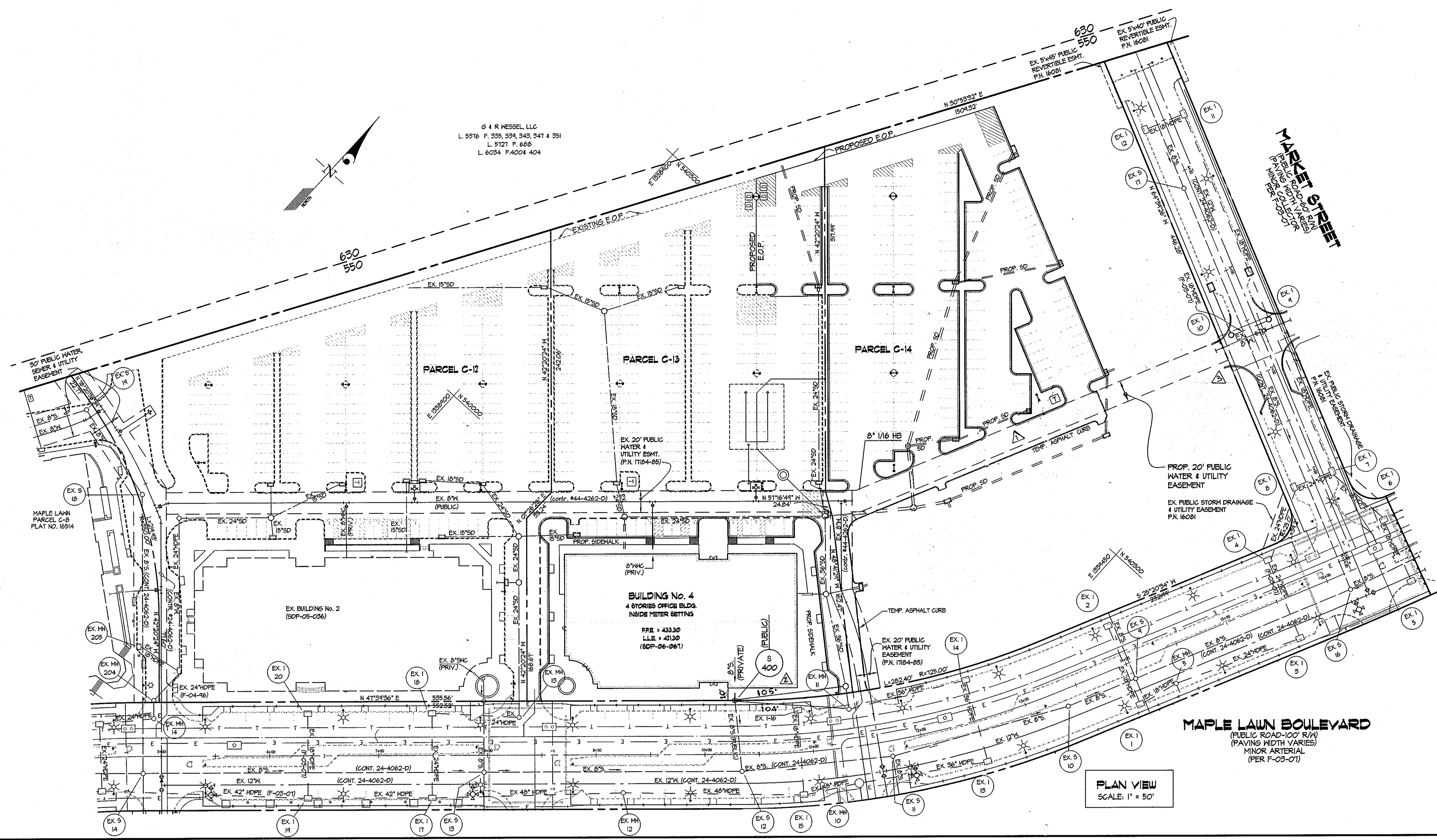
DES: mbt			
DRN: hlp			
CHK: mbt/clg	LEM $\Delta$	Added to "Quantities" table	6/6/12
DATE: 2006	WBJ $\Delta$	Remove Waterlines, Rev. marks	6/12/11
BY	NO	REVISION	DATE

WATER EXTENSION PLAN  
600' SCALE MAP NO. 46 BLOCK NO. 4

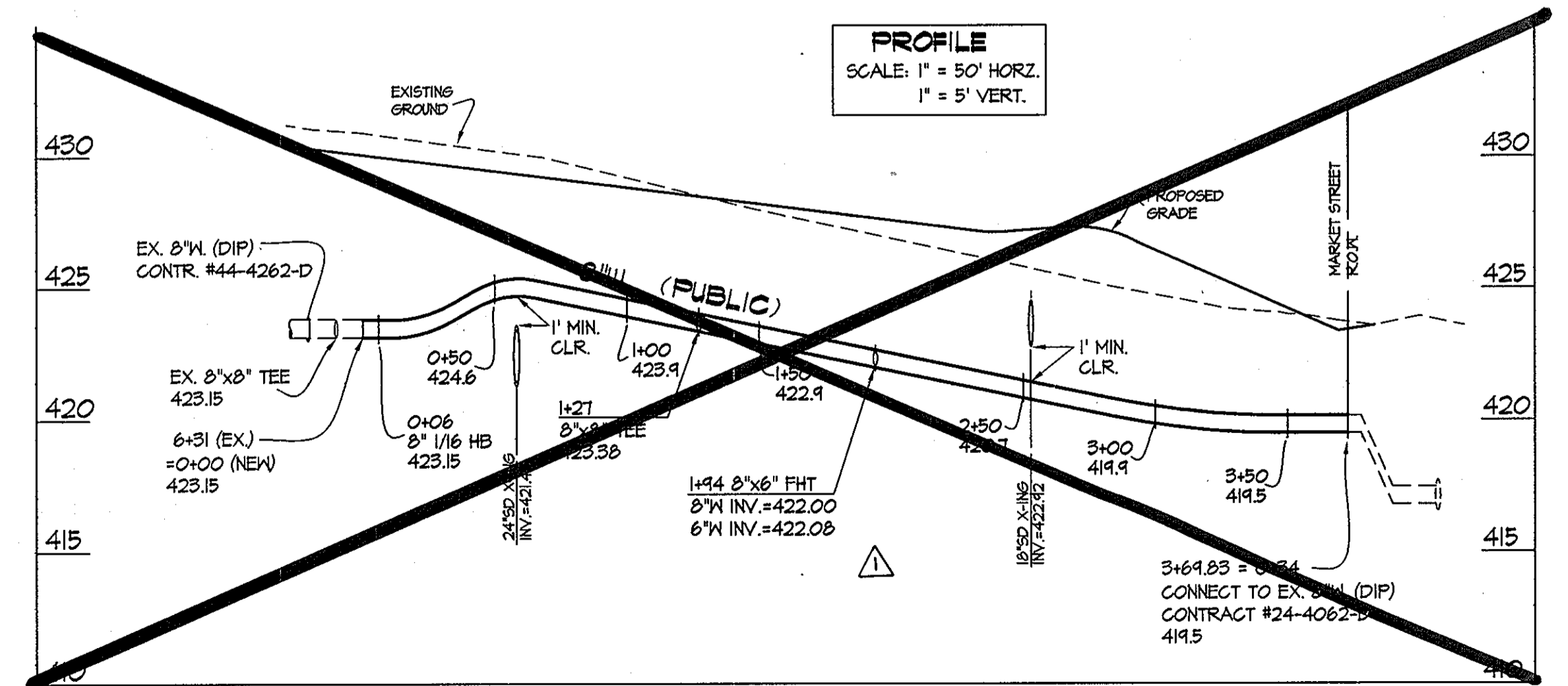
MAPLE LAWN FARMS  
OFFICE BUILDING No. 4  
BUSINESS DISTRICT  
PARCEL C-12 thru C-14  
HOWARD COUNTY, MARYLAND  
ELECTION DISTRICT No. 5  
CONTRACT No. 24-4342-D

SCALE AS SHOWN  
SHEET 1 OF 2

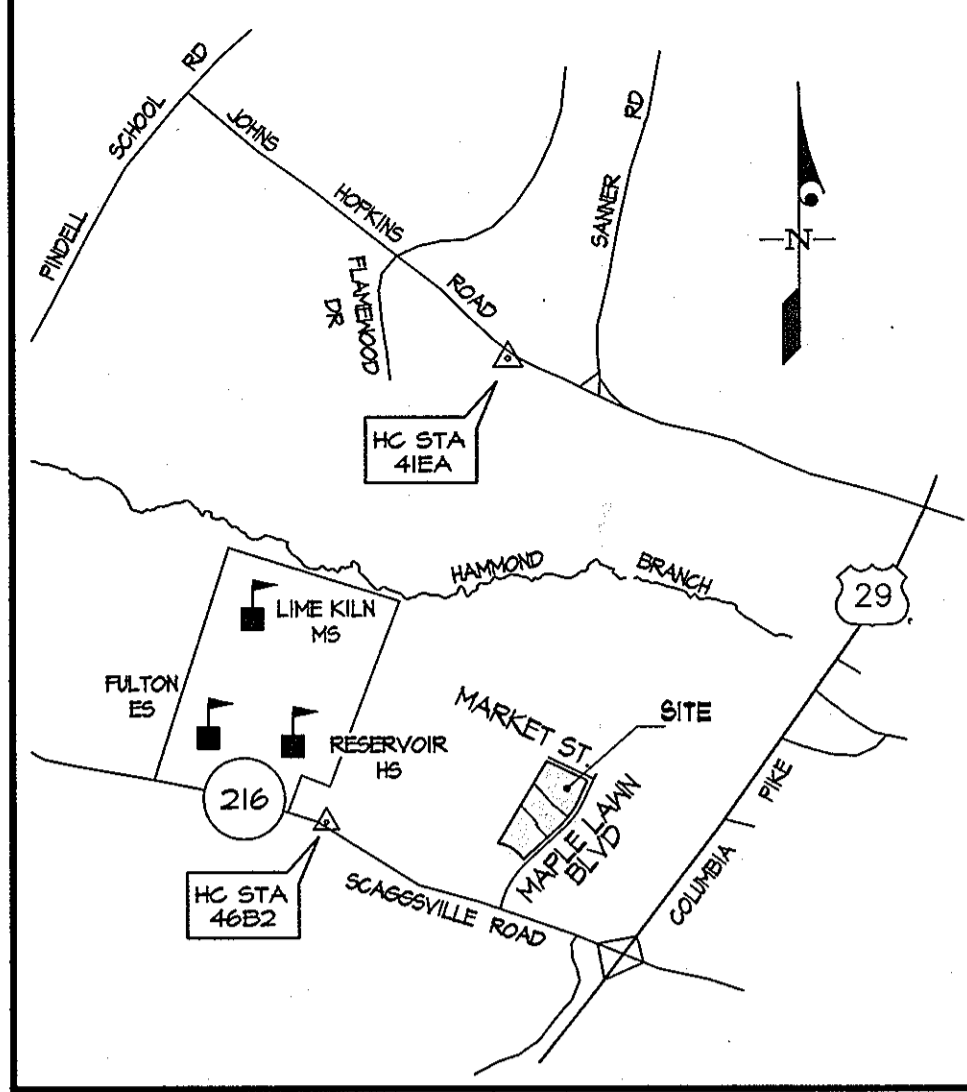
G & R KESSEL, LLC  
 L. 5916 F. 335, 339, 343, 347 & 351  
 L. 5721 F. 688  
 L. 6034 F.A.004.404



PLAN VIEW  
 SCALE: 1" = 50'



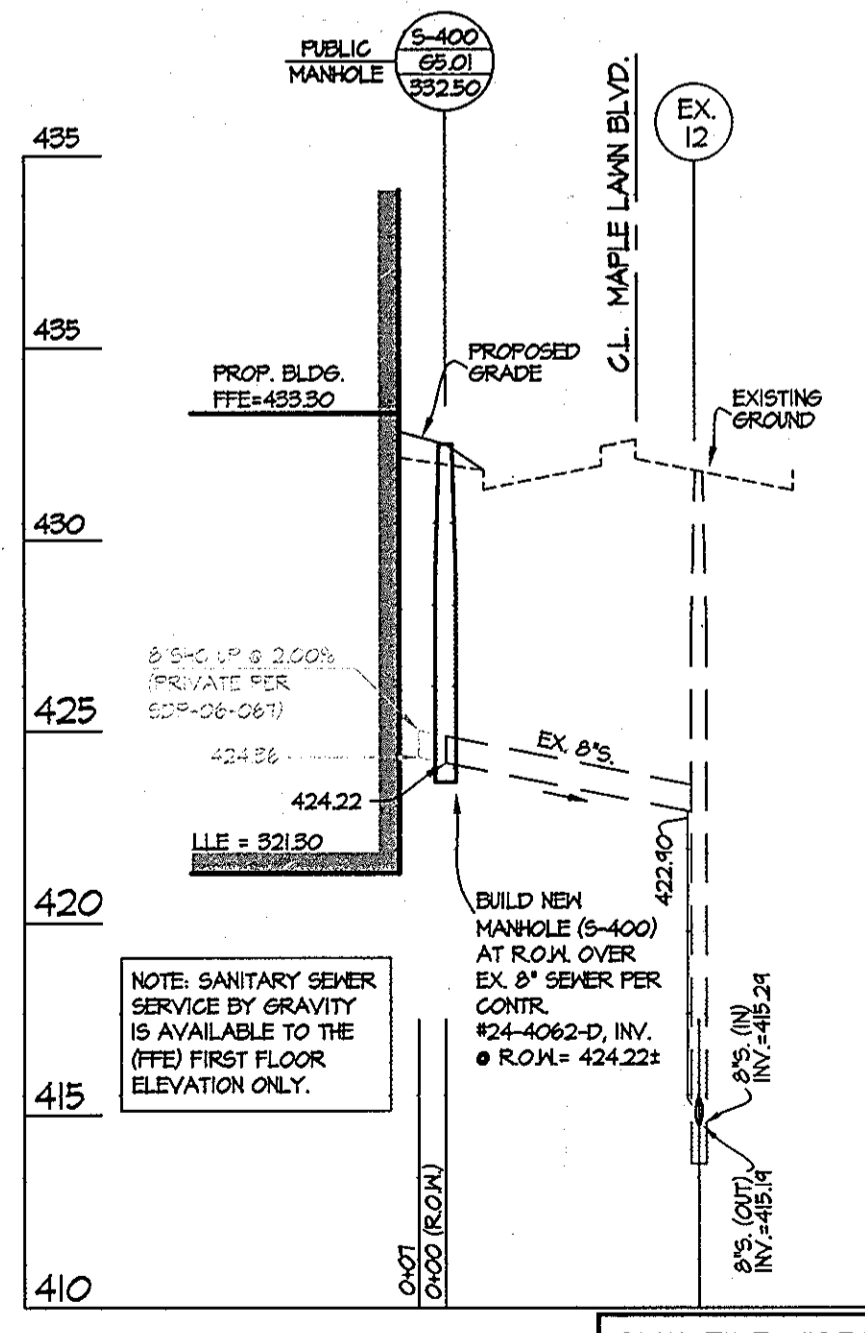
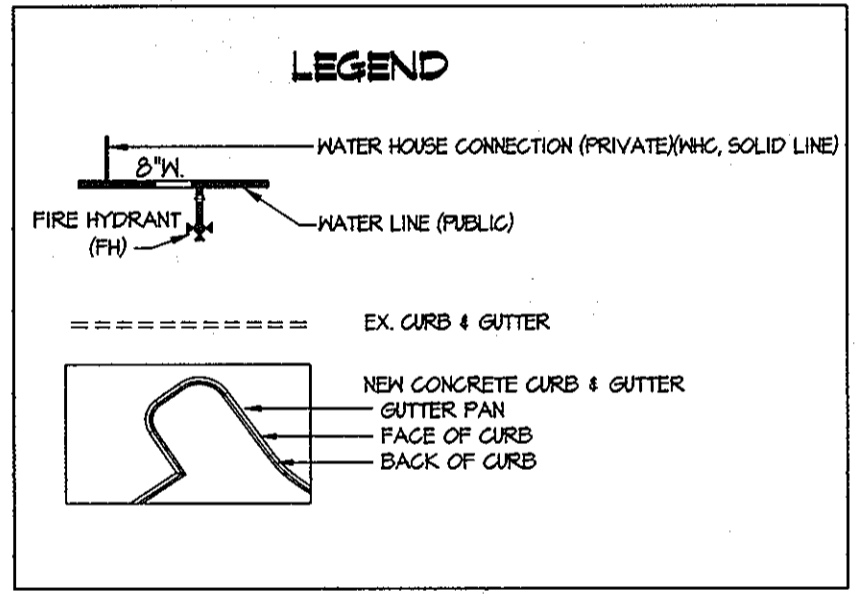
PROFILE  
 SCALE: 1" = 50' HORIZ.  
 1" = 5' VERT.



BENCH MARK LOCATION MAP  
 SCALE: 1" = 2000'

BENCHMARKS  
 41EA STANDARD DISC ON CONCRETE MONUMENT ELEV. = 407.05  
 46B2 STANDARD DISC ON CONCRETE MONUMENT ELEV. = 414.67

FITTING INFORMATION		
LOCATION	FITTING	NAD 83 COORDINATES
WM. STA. 0+06	8" 1/16" TEE	N 540171.70 E 1394241.13
WM. STA. 1+27	8" 1/16" TEE	N 540281.10 E 1394243.08
WM. STA. 1+27	8"x6" FHT	N 540347.90 E 1394321.74



GLW FILE #03054  
 03054-tws.dwg

DEPARTMENT OF PUBLIC WORKS  
 HOWARD COUNTY, MARYLAND  
 RUTH B... 3-29-06  
 CHIEF, BUREAU OF UTILITIES

DEPARTMENT OF PLANNING AND ZONING  
 HOWARD COUNTY, MARYLAND  
 ... 4/10/06  
 CHIEF, DEVELOPMENT ENGINEERING DIVISION

GLW GUTSCHICK LITTLE & WEBER, P.A.  
 CIVIL ENGINEERS, LAND SURVEYORS, LAND PLANNERS, LANDSCAPE ARCHITECTS  
 3609 NATIONAL DRIVE - SUITE 250 - BURTONSVILLE OFFICE PARK  
 BURTONSVILLE, MARYLAND 20866  
 TEL: 301-421-4024 BAL: 410-880-1820 DC/VK: 301-989-2524 FAX: 301-421-4186



DES: mbt			
DRN: klp			
CHK: mbl/ckg	9/1	Reflect changes in Market at ...	12.26.12
	LEM	Added Dimensions	6/6/12
	Wmj	Remove Waterlines & Profile	10/11
DATE: 2006	BY: NO	REVISION	DATE

WATER EXTENSION  
 PLAN & PROFILE  
 SCALE: AS SHOWN  
 600' SCALE MAP NO. 46 BLOCK NO. 4

MAPLE LAWN FARMS  
 OFFICE BUILDING NO. 4  
 BUSINESS DISTRICT  
 PARCEL C-12 thru C-14  
 HOWARD COUNTY, MARYLAND  
 ELECTION DISTRICT No. 5  
 CONTRACT No. 24-4342-D

SCALE AS SHOWN  
 SHEET 2 OF 2