

GENERAL NOTES

- PART I**
- APPROXIMATE LOCATION OF EXISTING MAINS ARE SHOWN. THE CONTRACTOR SHALL TAKE ALL NECESSARY PRECAUTIONS TO PROTECT EXISTING MAINS AND SERVICES AND MAINTAIN UNINTERRUPTED SERVICE. ANY DAMAGE INCURRED SHALL BE REPAIRED IMMEDIATELY TO THE SATISFACTION OF THE ENGINEER AT THE CONTRACTOR'S EXPENSE.
 - A BOUNDARY SURVEY AND A FIELD RUN TOPOGRAPHIC SURVEY IS PERFORMED BY ROBERT H. VOGEL ENGINEERING, INC. IN AUGUST 2005.
 - ALL HORIZONTAL CONTROLS ARE BASED ON MARYLAND STATE COORDINATES. (NORTH AMERICAN DATUM OF 1983 (NAD 83)).
 - ALL VERTICAL CONTROLS ARE BASED ON U.S.G.S. DATA.
 - ALL PIPE ELEVATIONS SHOWN ARE INVERT ELEVATIONS.
 - CLEAR ALL UTILITIES BY A MINIMUM OF 12 INCHES. CLEAR ALL POLES BY 2'-0" MINIMUM OR TUNNEL AS REQUIRED UNLESS OTHERWISE NOTED. THE OWNER HAS CONTACTED THE UTILITY COMPANIES AND HAS MADE ARRANGEMENTS FOR BRACING OF POLES AS SHOWN ON DRAWINGS IN THE EVENT THE CONTRACTOR'S WORK REQUIRES THE BRACING OF ADDITIONAL POLES. ANY COST INCURRED BY THE OWNER FOR BRACING OF ADDITIONAL POLES OR DAMAGES SHALL BE DEDUCTED FROM MONIES OWED THE CONTRACTOR. THE CONTRACTOR SHALL COORDINATE WITH THE UTILITY COMPANIES TO SCHEDULE THE BRACING OF THE POLES.
 - FOR DETAILS NOT SHOWN ON THE DRAWINGS, AND FOR MATERIALS AND CONSTRUCTION METHODS USE HOWARD COUNTY DESIGN MANUAL, VOLUME IV, STANDARD SPECIFICATIONS AND DETAILS FOR CONSTRUCTION (LATEST EDITION). THE CONTRACTOR SHALL HAVE A COPY OF VOLUME IV ON THE JOB.
 - WHERE TEST PITS HAVE BEEN MADE ON EXISTING UTILITIES, THEY ARE NOTED BY THE SYMBOL AT THE LOCATION OF THE TEST PIT. A NOTES OR NOTES CONTAINING THE RESULTS OF THE TEST PIT OR PITS IS INCLUDED ON THE DRAWINGS. EXISTING UTILITIES IN THE VICINITY OF THE PROPOSED WORK FOR WHICH TEST PITS HAVE NOT BEEN DUG SHALL BE LOCATED BY THE CONTRACTOR TWO WEEKS IN ADVANCE OF CONSTRUCTION OPERATION AT HIS OWN EXPENSE.
 - THE CONTRACTOR SHALL NOTIFY THE FOLLOWING UTILITY COMPANIES OR AGENCIES AT LEAST FIVE WORKING DAYS BEFORE STARTING WORK SHOWN THESE PLANS:
 AT & T 1-800-252-1133
 BGE (CONTRACTOR SERVICE) 410-850-4620
 BGE (UNDERGROUND DAMAGE CONTROL) 410-291-4607
 BUREAU OF UTILITIES 410-313-4900
 COLONIAL PIPELINE CO 410-549-4120
 MISS UTILITY 1-800-257-7777
 STATE HIGHWAY ADMINISTRATION 410-531-5533
 VERIZON 1-800-743-0033/410-224-9210
 - TREES AND SHRUBS ARE TO BE PROTECTED FROM DAMAGE TO THE MAXIMUM EXTENT. TREES AND SHRUBS LOCATED WITHIN THE CONSTRUCTION STRIP ARE NOT TO BE REMOVED OR DAMAGED BY THE CONTRACTOR.
 - THE CONTRACTOR SHALL REMOVE TREES, STUMPS AND ROOTS ALONG THE LINE OF EXCAVATION. PAYMENT FOR SUCH REMOVAL SHALL BE INCLUDED IN THE UNIT PRICE BID FOR THE CONSTRUCTION OF THE MAIN.
 - THE CONTRACTOR SHALL NOTIFY THE BUREAU OF HIGHWAYS, HOWARD COUNTY, AT (410) 313-7450 AT LEAST FIVE WORKING DAYS BEFORE ANY OPEN CUTTING OR BORING JACKING OF ANY COUNTY ROAD FOR LAYING BORING/JACKING OPERATION IN COUNTY ROADS FOR LAYING WATER/SEWER MAIN OR HOUSE CONNECTIONS. THE APPROVAL OF THESE DRAWINGS WILL CONSTITUTE COMPLIANCE WITH DPW REQUIREMENTS PER SECTION 18.114(c) OF THE HOWARD COUNTY CODE.
 - THE CONTRACTOR SHALL EXERCISE EXTREME CAUTION WHEN WORKING NEAR AND/OR AROUND OVERHEAD UTILITY WIRES.

PART II - WATER

- ALL WATER MAINS TO BE D.I.P. CLASS 52 UNLESS OTHERWISE NOTED.
- TOPS OF ALL WATER MAINS TO HAVE A MINIMUM OF 3'-6" COVER UNLESS OTHERWISE NOTED.
- VALVES ADJACENT TO TEES SHALL BE STRAPPED TO TEES.
- ALL FITTINGS SHALL BE BUTTRESSED OR ANCHORED WITH CONCRETE IN ACCORDANCE WITH THE STANDARD DETAILS UNLESS OTHERWISE PROVIDED FOR ON THE DRAWINGS.
- FIRE HYDRANTS SHALL BE SET TO THE BURY LINE ELEVATIONS SHOWN ON THE DRAWINGS. ALL FIRE HYDRANTS SHALL BE RESTRAINED AND BUTTRESSED WITH CONCRETE IN ACCORDANCE WITH STANDARD DETAILS. THE SOIL AROUND THE FIRE HYDRANT SHALL BE COMPACTED IN ACCORDANCE WITH SECTION 1000 AND 1005 OF THE STANDARD SPECIFICATIONS.
- THE CONTRACTOR SHALL NOT OPERATE ANY WATER MAIN VALVES ON THE EXISTING WATER SYSTEM.
- ALL WATER HOUSE CONNECTIONS SHALL BE FOR INSIDE METER SETTING UNLESS OTHERWISE NOTED ON PLANS OR IN SPECIFICATIONS.

PART III - SEWER

- ALL SEWER MAINS SHALL BE D.I.P. OR P.V.C UNLESS OTHERWISE NOTED.
- ALL MANHOLES SHALL BE 4'-0" INSIDE DIAMETER UNLESS OTHERWISE NOTED.
- FORCE MAINS SHALL BE D.I.P. ONLY.
- MANHOLES SHOWN WITH 12" AND 16" WALLS ARE FOR BRICK MANHOLES ONLY.
- MANHOLES DESIGNATED W.T. IN PLAN AND PROFILE SHALL HAVE WATERTIGHT FRAME AND COVER, STANDARD DETAIL 65.52. WHERE WATERTIGHT MANHOLE FRAME AND COVERS ARE USED, SET TOP OF FRAME 1'-6" ABOVE FINISHED GRADE UNLESS OTHERWISE NOTED ON THE DRAWINGS.
- HOUSE(S) WITH THE SYMBOL "C.N.S." INDICATES THAT CELLAR CANNOT BE SERVED.

SEDIMENT CONTROL MEASURES WILL BE IMPLEMENTED IN ACCORDANCE WITH SECTION 219 OF THE SPECIFICATIONS AND WITH FINAL PLAN F-06-213 AND SDP-06-50.

REVIEWED FOR HOWARD COUNTY SOIL CONSERVATION DISTRICT AND MEETS TECHNICAL REQUIREMENTS.

THIS DEVELOPMENT IS APPROVED FOR SOIL EROSION AND SEDIMENT CONTROL BY THE HOWARD COUNTY SOIL CONSERVATION DISTRICT.

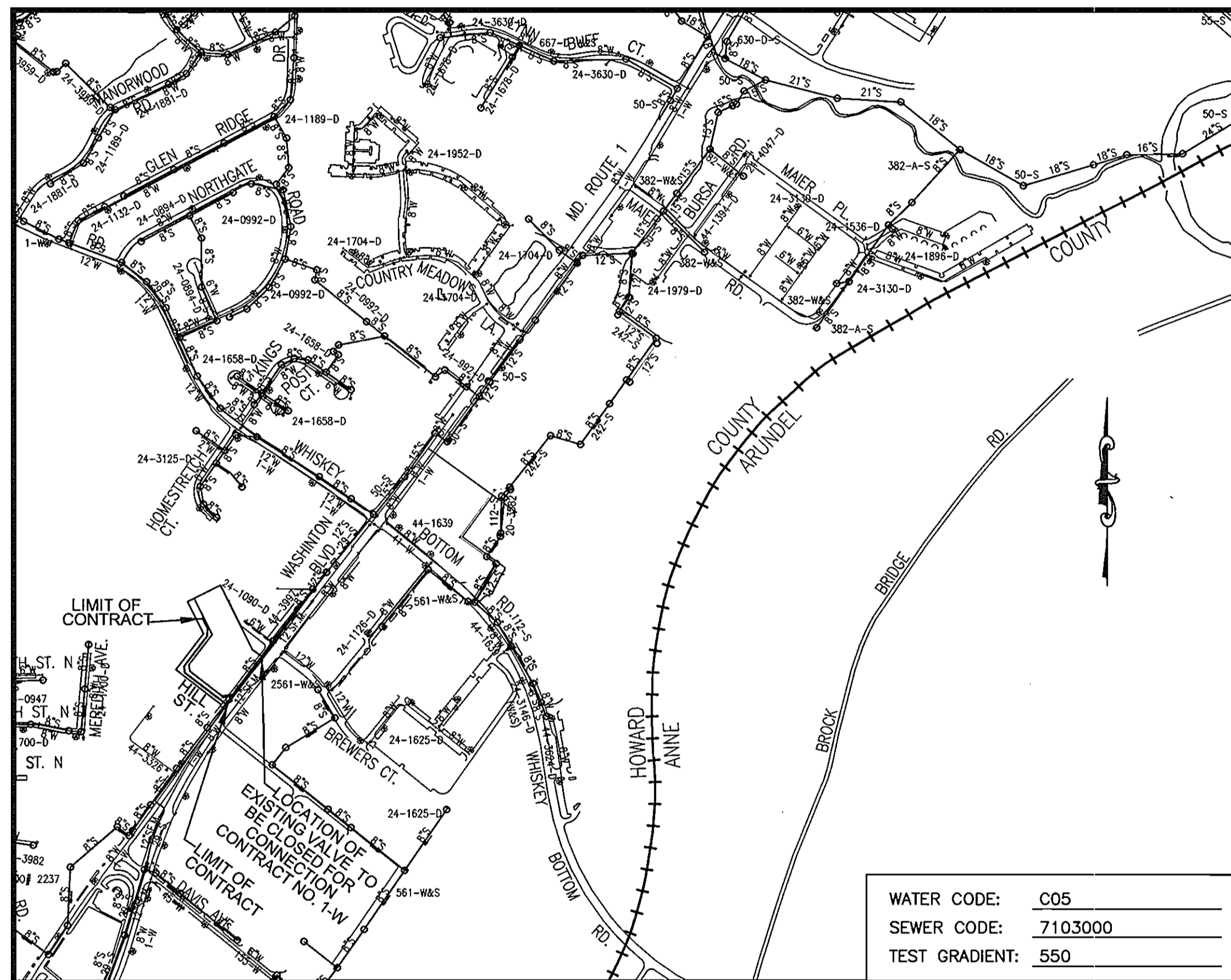
Jim Meyer
S. SOIL CONSERVATION DISTRICT
DATE: 12/18/06

John R. Robertson
HOWARD COUNTY SOIL CONSERVATION DISTRICT
DATE: 12/18/06

TYPE OF BUILDING:	APARTMENTS AND RETAIL
NO. OF UNITS/PARCELS:	80 UNITS
NO. OF WATER HOUSE CONNECTIONS:	ONE
NO. OF SEWER HOUSE CONNECTIONS:	ONE
DRAINAGE AREA:	LITTLE PATUXENT RIVER
TREATMENT PLANT:	LITTLE PATUXENT WRP

DEVELOPER
ORCHARD DEVELOPMENT
5032 DORSEY HALL DRIVE
ELLICOTT CITY, MARYLAND 21042
(410) 964-2334
(410) 964-2315 FAX

PATUXENT SQUARE APARTMENTS AND RETAIL FINAL PUBLIC WATER AND SEWER PLAN HOWARD COUNTY, MARYLAND CONTRACT NO. 24-4340-D

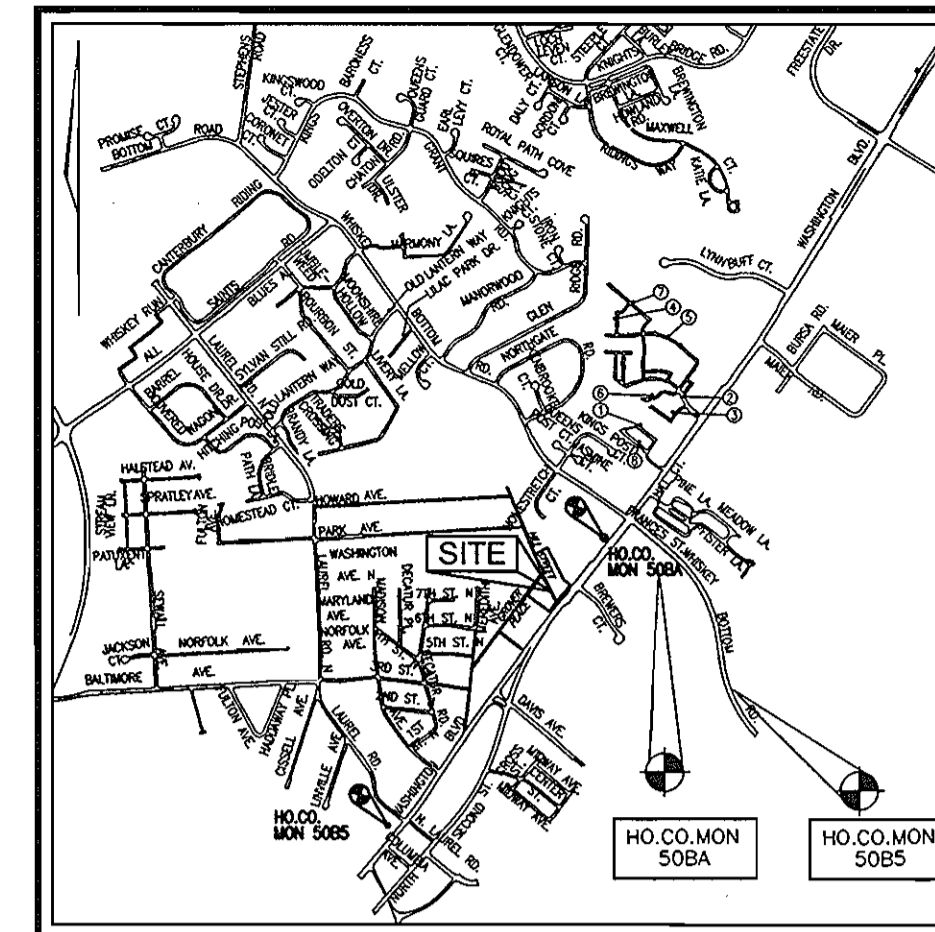


LOCATION MAP
SCALE: 1"=600'

REF.: SDP-06-50

BENCHMARKS

HOWARD COUNTY BENCHMARK 50BA
N 527561.678E 1359772.604 ELEV. 249.737
HOWARD COUNTY BENCHMARK 50B5
N 524999.375E 1357925.748 ELEV. 178.195



VICINITY MAP
SCALE: 1"=2000'

QUANTITIES

NAME OF UTILITY CONTRACTOR :				
SURVEY AND DRAFTING DIVISION AS-BUILT DATE :				
ITEMS	QUANTITIES ESTIMATED	AS-BUILT		
		QUANTITIES	TYPE	MANUFACTURER/SUPPLIER
WATER				
8" WATER	640 LF.			
8" VALVE	5 EA.			
8"x8" TEE	3 EA.			
8" 1/8 BEND	5 EA.			
8" CAP AND BUTTRESS	1 EA.			
FIRE HYDRANT	2 EA.			
8"x8" FIREHYDRANT TEE&V	2 EA.			
6" WATER	38 LF.			
6" VALVE	1 EA.			
4" SHC	5 LF.			
8" SEWER	77 LF.			
SEWER MAINHOLE	2 EA.			
6" x 8" EXPANDER	1 EA.			
8" x 6" REDUCER	1 EA.			
8" 1/4 BEND	2 EA.			

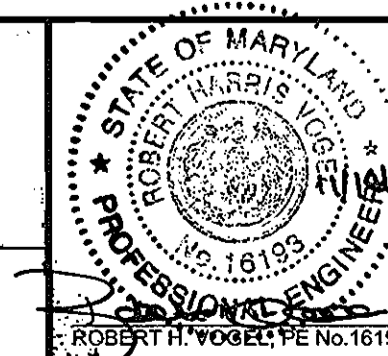
DEPARTMENT OF PUBLIC WORKS
HOWARD COUNTY, MARYLAND

DEPARTMENT OF PLANNING & ZONING
HOWARD COUNTY, MARYLAND

ROBERT H. VOGEL ENGINEERING, INC.
ENGINEERS • SURVEYORS • PLANNERS
8407 MAIN STREET TEL: 410.461.7666
ELLICOTT CITY, MD 21043 FAX: 410.461.8961

DES:	RJMY				
DRN:	RJMY				
CHK:	RHV	1	REVISE 8" WATER CONNECTION TO ROUTE 1, ADD SEWER MANHOLE FOR GREASE LINE, ADD VERT. TO 8" W	12-21-07	
DATE:	MARCH 2006	BY	NO.	REVISION	DATE

8" WATER



PATUXENT SQUARE APARTMENTS AND RETAIL
CONTRACT NO. 24-4340-D

SCALE AS SHOWN

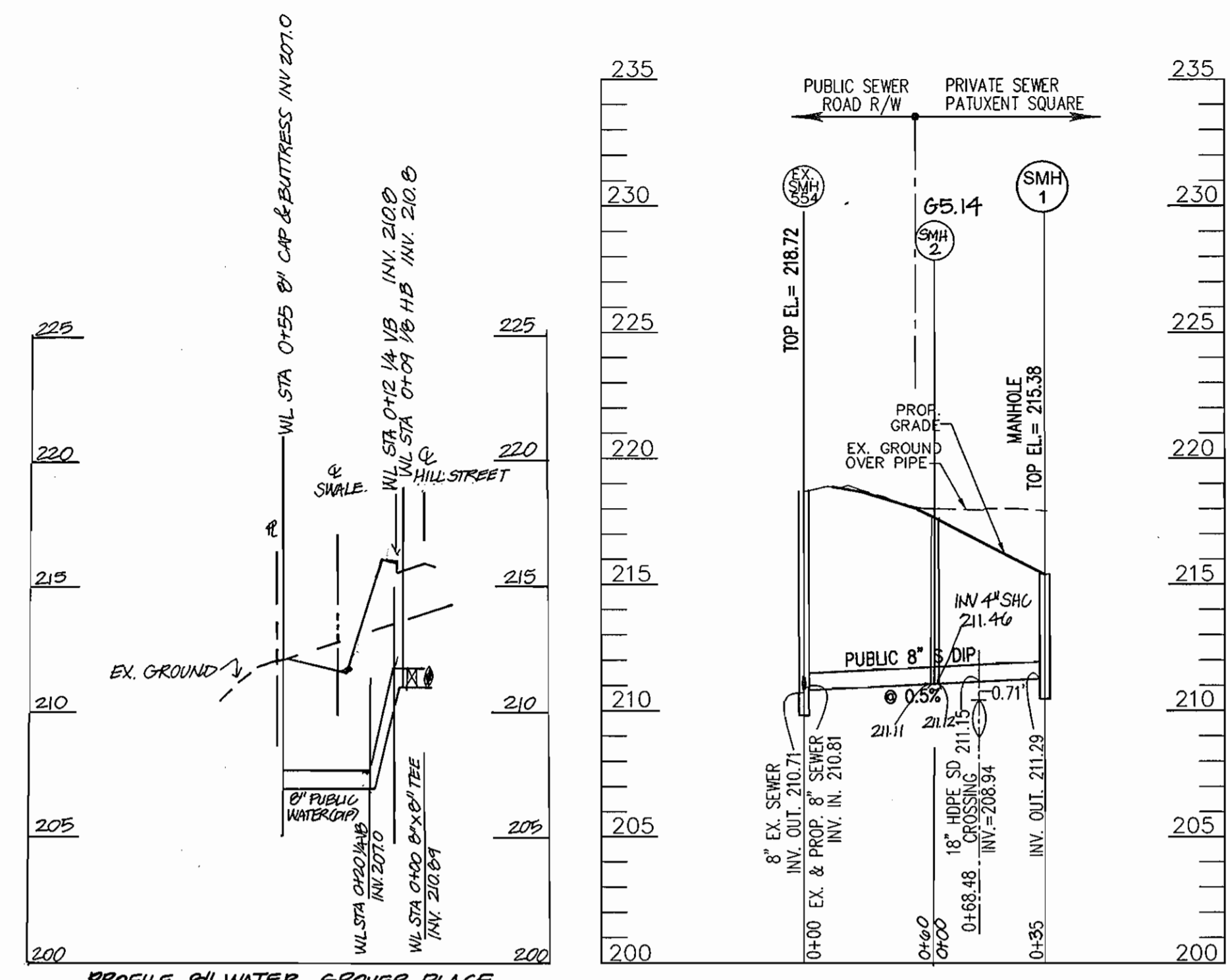
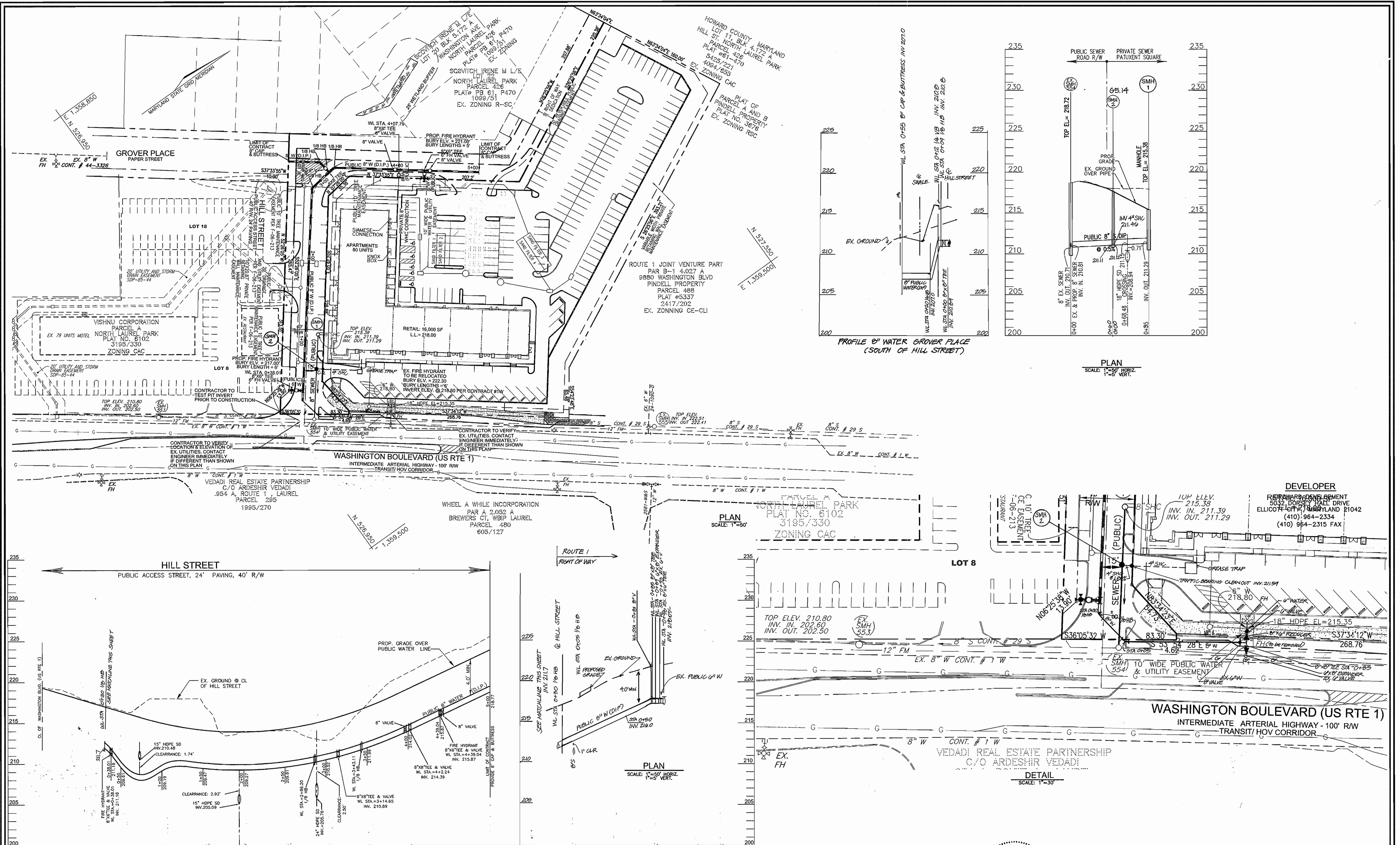
Ruth B...
CHIEF, BUREAU OF UTILITIES
DATE: 12-7-06

...
CHIEF, DEVELOPMENT ENGINEERING DIVISION
DATE: 12/18/06

TAX MAP 50 BLOCK 4
6TH ELECTION DISTRICT

FUTURE BULK PARCEL A, A RESUBDIVISION OF EXISTING PARCEL 426, LOTS 1 THRU 10, BLOCK 4 AND LOTS 9, 10 AND 19 THRU 22, BLOCK 6, NORTH LAUREL PARK HOWARD COUNTY, MARYLAND

SHEET 1 OF 2




PLAN
SCALE: 1"=50' HORIZ.
1"=5' VERT.

PLAN
SCALE: 1"=50'

DETAIL
SCALE: 1"=30'

DEPARTMENT OF PUBLIC WORKS HOWARD COUNTY, MARYLAND <i>R.H. Vogel</i> CHIEF, BUREAU OF UTILITIES	DEPARTMENT OF PLANNING & ZONING HOWARD COUNTY, MARYLAND <i>[Signature]</i> 12/19/06 CHIEF, DEVELOPMENT ENGINEERING DIVISION	ROBERT H. VOGEL ENGINEERING, INC. ENGINEERS • SURVEYORS • PLANNERS 8407 MAIN STREET TEL: 410.461.7666 ELLICOTT CITY, MD 21043 FAX: 410.461.8961	DES: RJ/MY DRN: RJ/MY CHK: RHV DATE: MARCH 2006	<table border="1" style="width:100%; border-collapse: collapse;"> <tr> <th>BY</th> <th>NO.</th> <th>REVISION</th> <th>DATE</th> </tr> <tr> <td>RHV</td> <td>1</td> <td>REVISE WATER CONNECTION TO ROUTE 1, ADD SEWER MANHOLE FOR GREASE LINE, AND VERTICAL BEND TO 8\"/> <td>12.21.07</td> </td></tr> </table>	BY	NO.	REVISION	DATE	RHV	1	REVISE WATER CONNECTION TO ROUTE 1, ADD SEWER MANHOLE FOR GREASE LINE, AND VERTICAL BEND TO 8\"/> <td>12.21.07</td>	12.21.07	8" WATER 600' SCALE MAP NO. 50 BLOCK NO. 4		PATUXENT SQUARE APARTMENTS AND RETAIL CONTRACT NO. 24-4340-D FUTURE BULK PARCEL A, A RESUBDIVISION OF EXISTING PARCEL 426, LOTS 1 THRU 10, BLOCK 4 AND LOTS 9, 10 AND 19 THRU 22, BLOCK 6, NORTH LAUREL PARK HOWARD COUNTY, MARYLAND TAX MAP 50 BLOCK 4 6TH ELECTION DISTRICT	SCALE AS SHOWN SHEET 2 OF 2
BY	NO.	REVISION	DATE													
RHV	1	REVISE WATER CONNECTION TO ROUTE 1, ADD SEWER MANHOLE FOR GREASE LINE, AND VERTICAL BEND TO 8\"/> <td>12.21.07</td>	12.21.07													

GENERAL NOTES

- PART I**
- APPROXIMATE LOCATION OF EXISTING MAINS ARE SHOWN. THE CONTRACTOR SHALL TAKE ALL NECESSARY PRECAUTIONS TO PROTECT EXISTING MAINS AND SERVICES AND MAINTAIN UNINTERRUPTED SERVICE. ANY DAMAGE INCURRED SHALL BE REPAIRED IMMEDIATELY TO THE SATISFACTION OF THE ENGINEER AT THE CONTRACTOR'S EXPENSE.
 - A BOUNDARY SURVEY AND A FIELD RUN TOPOGRAPHIC SURVEY IS PERFORMED BY ROBERT H. VOGEL ENGINEERING, INC. IN AUGUST 2005.
 - ALL HORIZONTAL CONTROLS ARE BASED ON MARYLAND STATE COORDINATES. (NORTH AMERICAN DATUM OF 1983 (NAD 83))
 - ALL VERTICAL CONTROLS ARE BASED ON U.S.G.S. DATA.
 - ALL PIPE ELEVATIONS SHOWN ARE INVERT ELEVATIONS.
 - CLEAR ALL UTILITIES BY A MINIMUM OF 12 INCHES. CLEAR ALL POLES BY 2'-0" MINIMUM OR TUNNEL AS REQUIRED UNLESS OTHERWISE NOTED. THE OWNER HAS CONTACTED THE UTILITY COMPANIES AND HAS MADE ARRANGEMENTS FOR BRACING OF POLES AS SHOWN ON DRAWINGS IN THE EVENT THE CONTRACTOR'S WORK REQUIRES THE BRACING OF ADDITIONAL POLES. ANY COST INCURRED BY THE OWNER FOR BRACING OF ADDITIONAL POLES OR DAMAGES SHALL BE DEDUCTED FROM MONIES OWED THE CONTRACTOR. THE CONTRACTOR SHALL COORDINATE WITH THE UTILITY COMPANIES TO SCHEDULE THE BRACING OF THE POLES.
 - FOR DETAILS NOT SHOWN ON THE DRAWINGS, AND FOR MATERIALS AND CONSTRUCTION METHODS USE HOWARD COUNTY DESIGN MANUAL, VOLUME IV, STANDARD SPECIFICATIONS AND DETAILS FOR CONSTRUCTION (LATEST EDITION). THE CONTRACTOR SHALL HAVE A COPY OF VOLUME IV ON THE JOB.
 - WHERE TEST PITS HAVE BEEN MADE ON EXISTING UTILITIES, THEY ARE NOTED BY THE SYMBOL  AT THE LOCATION OF THE TEST PIT. A NOTES OR NOTES CONTAINING THE RESULTS OF THE TEST PIT OR PITS IS INCLUDED ON THE DRAWINGS. EXISTING UTILITIES IN THE VICINITY OF THE PROPOSED WORK FOR WHICH TEST PITS HAVE NOT BEEN DUG SHALL BE LOCATED BY THE CONTRACTOR TWO WEEKS IN ADVANCE OF CONSTRUCTION OPERATION AT HIS OWN EXPENSE.
 - THE CONTRACTOR SHALL NOTIFY THE FOLLOWING UTILITY COMPANIES OR AGENCIES AT LEAST FIVE WORKING DAYS BEFORE STARTING WORK SHOWN THESE PLANS:
 AT & T 1-800-252-1133
 BGE (CONTRACTOR SERVICE) 410-850-4620
 BGE (UNDERGROUND DAMAGE CONTROL) 410-291-4607
 BUREAU OF UTILITIES 410-313-4900
 COLONIAL PIPELINE CO 410-549-4120
 MISS UTILITY 1-800-257-7777
 STATE HIGHWAY ADMINISTRATION 410-531-5533
 VERIZON 1-800-743-0033/410-224-9210
 - TREES AND SHRUBS ARE TO BE PROTECTED FROM DAMAGE TO THE MAXIMUM EXTENT. TREES AND SHRUBS LOCATED WITHIN THE CONSTRUCTION STRIP ARE NOT TO BE REMOVED OR DAMAGED BY THE CONTRACTOR.
 - THE CONTRACTOR SHALL REMOVE TREES, STUMPS AND ROOTS ALONG THE LINE OF EXCAVATION. PAYMENT FOR SUCH REMOVAL SHALL BE INCLUDED IN THE UNIT PRICE BID FOR THE CONSTRUCTION OF THE MAIN.
 - THE CONTRACTOR SHALL NOTIFY THE BUREAU OF HIGHWAYS, HOWARD COUNTY, AT (410) 313-7450 AT LEAST FIVE WORKING DAYS BEFORE ANY OPEN CUTTING OR BORING JACKING OF ANY COUNTY ROAD FOR LAYING BORING/JACKING OPERATIONS IN COUNTY ROADS FOR LAYING WATER/SEWER MAIN OR HOUSE CONNECTIONS. THE APPROVAL OF THESE DRAWINGS WILL CONSTITUTE COMPLIANCE WITH DPW REQUIREMENTS PER SECTION 18.114(a) OF THE HOWARD COUNTY CODE.
 - THE CONTRACTOR SHALL EXERCISE EXTREME CAUTION WHEN WORKING NEAR AND/OR AROUND OVERHEAD UTILITY WIRES.

PART II - WATER

- ALL WATER MAINS TO BE D.I.P. CLASS 52 UNLESS OTHERWISE NOTED.
- TOPS OF ALL WATER MAINS TO HAVE A MINIMUM OF 3'-6" COVER UNLESS OTHERWISE NOTED.
- VALVES ADJACENT TO TEES SHALL BE STRAPPED TO TEES.
- ALL FITTINGS SHALL BE BUTTRESSED OR ANCHORED WITH CONCRETE IN ACCORDANCE WITH THE STANDARD DETAILS UNLESS OTHERWISE PROVIDED FOR ON THE DRAWINGS.
- FIRE HYDRANTS SHALL BE SET TO THE BURY LINE ELEVATIONS SHOWN ON THE DRAWINGS. ALL FIRE HYDRANTS SHALL BE RESTRAINED AND BUTTRESSED WITH CONCRETE IN ACCORDANCE WITH STANDARD DETAILS. THE SOIL AROUND THE FIRE HYDRANT SHALL BE COMPACTED IN ACCORDANCE WITH SECTION 1000 AND 1005 OF THE STANDARD SPECIFICATIONS.
- THE CONTRACTOR SHALL NOT OPERATE ANY WATER MAIN VALVES ON THE EXISTING WATER SYSTEM.
- ALL WATER HOUSE CONNECTIONS SHALL BE FOR INSIDE METER SETTING UNLESS OTHERWISE NOTED ON PLANS OR IN SPECIFICATIONS.

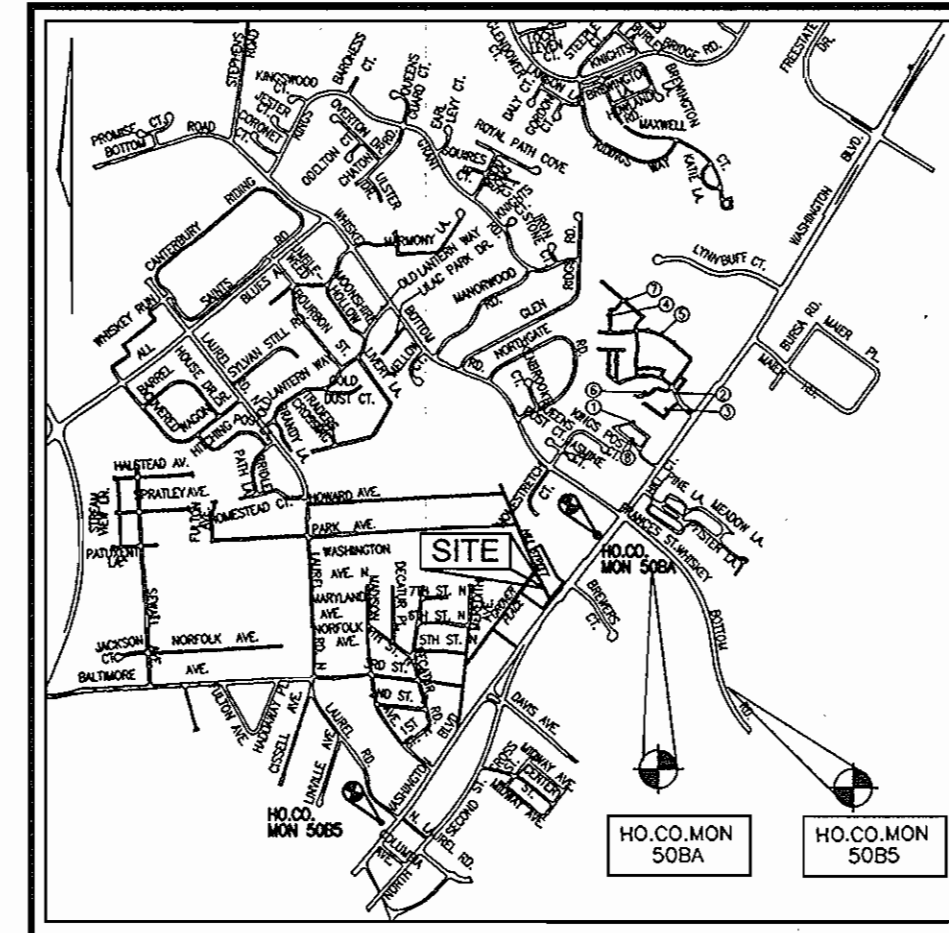
PART III - SEWER

- ALL SEWER MAINS SHALL BE D.I.P. OR P.V.C UNLESS OTHERWISE NOTED.
- ALL MANHOLES SHALL BE 4'-0" INSIDE DIAMETER UNLESS OTHERWISE NOTED.
- FORCE MAINS SHALL BE D.I.P. ONLY.
- MANHOLES SHOWN WITH 12" AND 16" WALLS ARE FOR BRICK MANHOLES ONLY.
- MANHOLES DESIGNATED W.T. IN PLAN AND PROFILE SHALL HAVE WATERTIGHT FRAME AND COVER, STANDARD DETAIL G5.52. WHERE WATERTIGHT MANHOLE FRAME AND COVERS ARE USED, SET TOP OF FRAME 1'-6" ABOVE FINISHED GRADE UNLESS OTHERWISE NOTED ON THE DRAWINGS.
- HOUSE(S) WITH THE SYMBOL "C.N.S." INDICATES THAT CELLAR CANNOT BE SERVED.

SEDIMENT CONTROL MEASURES WILL BE IMPLEMENTED IN ACCORDANCE WITH SECTION 219 OF THE SPECIFICATIONS AND WITH FINAL PLAN F-06-213 AND SDP-06-50.

BENCHMARKS

HOWARD COUNTY BENCHMARK 50BA
 N 527561.678 E 1359772.604 ELEV. 249.737
 HOWARD COUNTY BENCHMARK 50B5
 N 524999.375 E 1357925.748 ELEV. 178.195



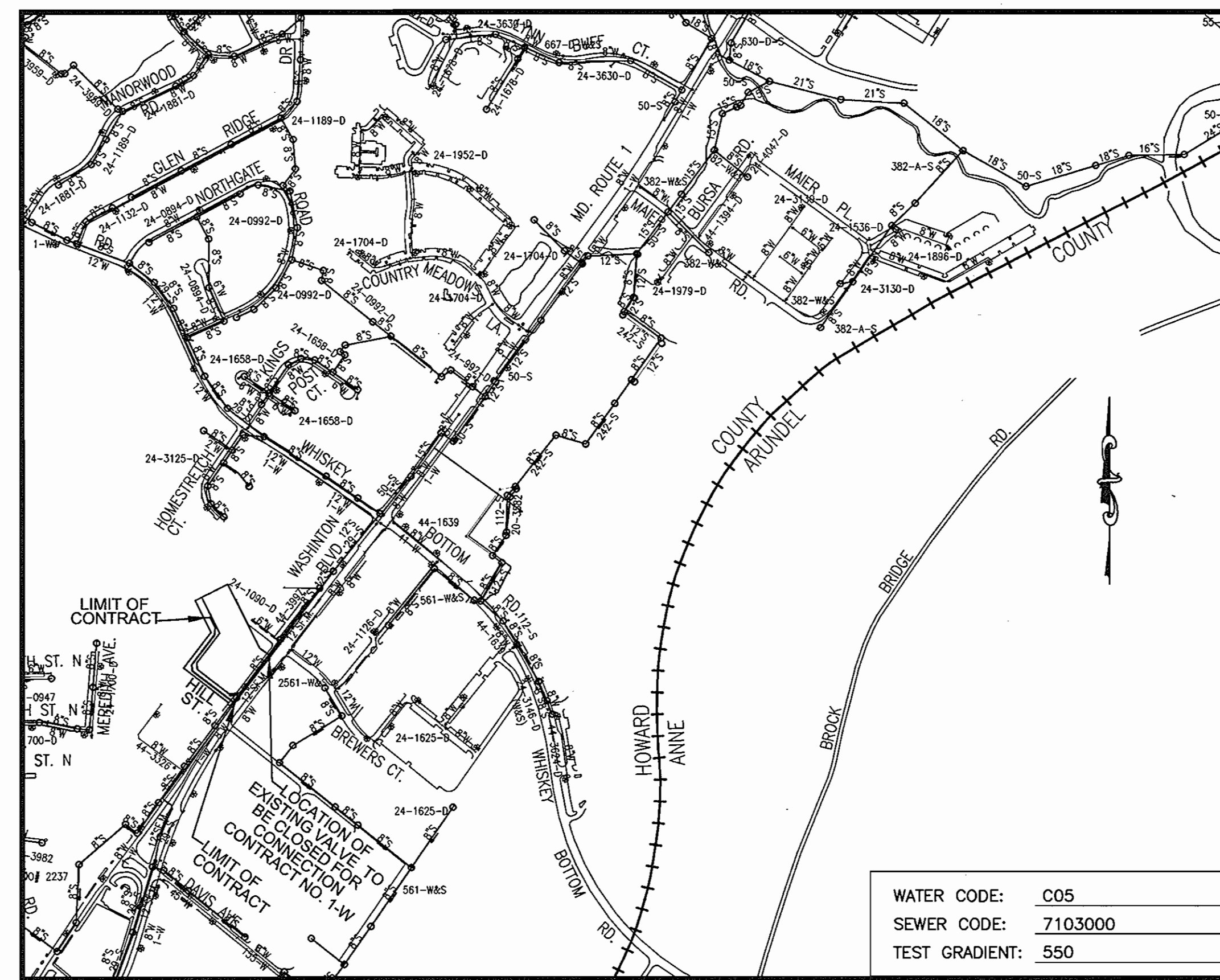
VICINITY MAP
 SCALE: 1" = 2000'

PATUXENT SQUARE APARTMENTS AND RETAIL

FINAL PUBLIC WATER AND SEWER PLAN

HOWARD COUNTY, MARYLAND

CONTRACT NO. 24-4340-D



LOCATION MAP
 SCALE: 1" = 600'

REF.: SDP-06-50

QUANTITIES				
NAME OF UTILITY CONTRACTOR : LOCUST LANE FARMS, GRACELINE CONST. CO.				
SURVEY AND DRAFTING DIVISION AS-BUILT DATE :				
ITEMS	QUANTITIES ESTIMATED	AS-BUILT		
		QUANTITIES	TYPE	MANUFACTURER/SUPPLIER
WATER				
8" WATER	640 L.F.	640±	D.I.P.	ATLANTIC STATES / FERGUSON WATER WORKS
8" VALVE	5 EA.	5	GATE VALVE	MOELLER CO. /
8"x8" TEE	3 EA.	3	D.I.P.	ATLANTIC STATES /
8" 1/8 BEND	5 EA.	5	"	" /
8" CAP AND BUTTRISS	1 EA.	2	"	" /
FIRE HYDRANT	2 EA.	3	A-423	MOELLER CO. /
8"x8" FIREHYDRANT TEE&V	2 EA.	2	D.I.P.	ATLANTIC STATES /
6" WATER	38 LF	38±	"	" /
6" VALVE	1 EA.	3	GATE VALVE	MOELLER CO. /
4" SHC	5 LF	7	P.V.C.	ATLANTIC STATES /
8" SEWER	77 LF	95	D.I.P.	AMERICAN CAST IRON PIPE CO. /
SEWER MANHOLE	2 EA.	2	PRE-CAST	CONTRACTORS PRECAST CORP.
6" x 8" EXPANDER	1 EA.	1	D.I.P.	ATLANTIC STATES / FERGUSON WATER WORKS
8" x 6" REDUCER	1 EA.	1	"	" /
8" 1/4 BEND (HS)	2 EA.	2	"	" /

WATER CODE: C05
 SEWER CODE: 7103000
 TEST GRADIENT: 550

REVIEWED FOR HOWARD COUNTY SOIL CONSERVATION DISTRICT AND MEETS TECHNICAL REQUIREMENTS.

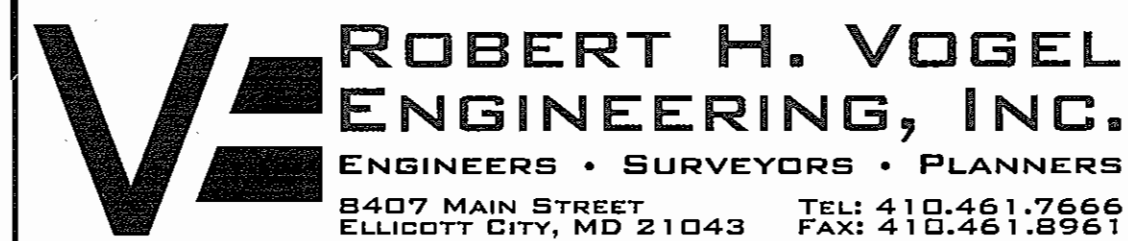
THIS DEVELOPMENT IS APPROVED FOR SOIL EROSION AND SEDIMENT CONTROL BY THE HOWARD COUNTY SOIL CONSERVATION DISTRICT.

TYPE OF BUILDING:	APARTMENTS AND RETAIL
NO. OF UNITS/PARCELS:	80 UNITS
NO. OF WATER HOUSE CONNECTIONS:	ONE
NO. OF SEWER HOUSE CONNECTIONS:	ONE
DRAINAGE AREA:	LITTLE PATUXENT RIVER
TREATMENT PLANT:	LITTLE PATUXENT WRP

DEVELOPER
 ORCHARD DEVELOPMENT
 5032 DORSEY HALL DRIVE
 ELLICOTT CITY, MARYLAND 21042
 (410) 964-2334
 (410) 964-2315 FAX

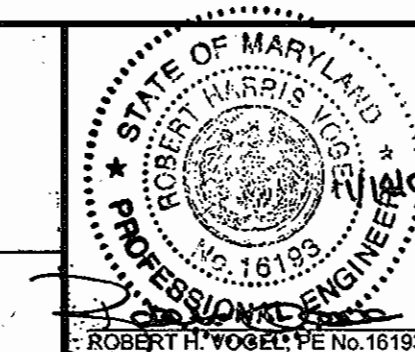
DEPARTMENT OF PUBLIC WORKS
 HOWARD COUNTY, MARYLAND

DEPARTMENT OF PLANNING & ZONING
 HOWARD COUNTY, MARYLAND



DES:	RJ/MY			
DRN:	RJ/MY			
CHK:	RHV	KRI 2	AS-BUILT DATA SHOWN	05/02/08
		RHV 1	REVISE 8" WATER CONNECTION TO ROUTE 1, ADD SEWER MANHOLE FOR GREASE LINE, ADJ VERT. TO 8" W	12-21-07
DATE:	MARCH 2006	BY	NO.	REVISION

8" WATER



PATUXENT SQUARE APARTMENTS AND RETAIL
 CONTRACT NO. 24-4340-D

SCALE AS SHOWN

12-7-06
 CHIEF, BUREAU OF UTILITIES

12/16/06
 CHIEF, DEVELOPMENT ENGINEERING DIVISION

TAX MAP 50 BLOCK 4
 6TH ELECTION DISTRICT

FUTURE BULK PARCEL A, A RESUBDIVISION OF EXISTING PARCEL 426, LOTS 1 THRU 10, BLOCK 4 AND LOTS 9, 10 AND 19 THRU 22, BLOCK 5, NORTH LAUREL PARK HOWARD COUNTY, MARYLAND

SHEET 1 OF 2