

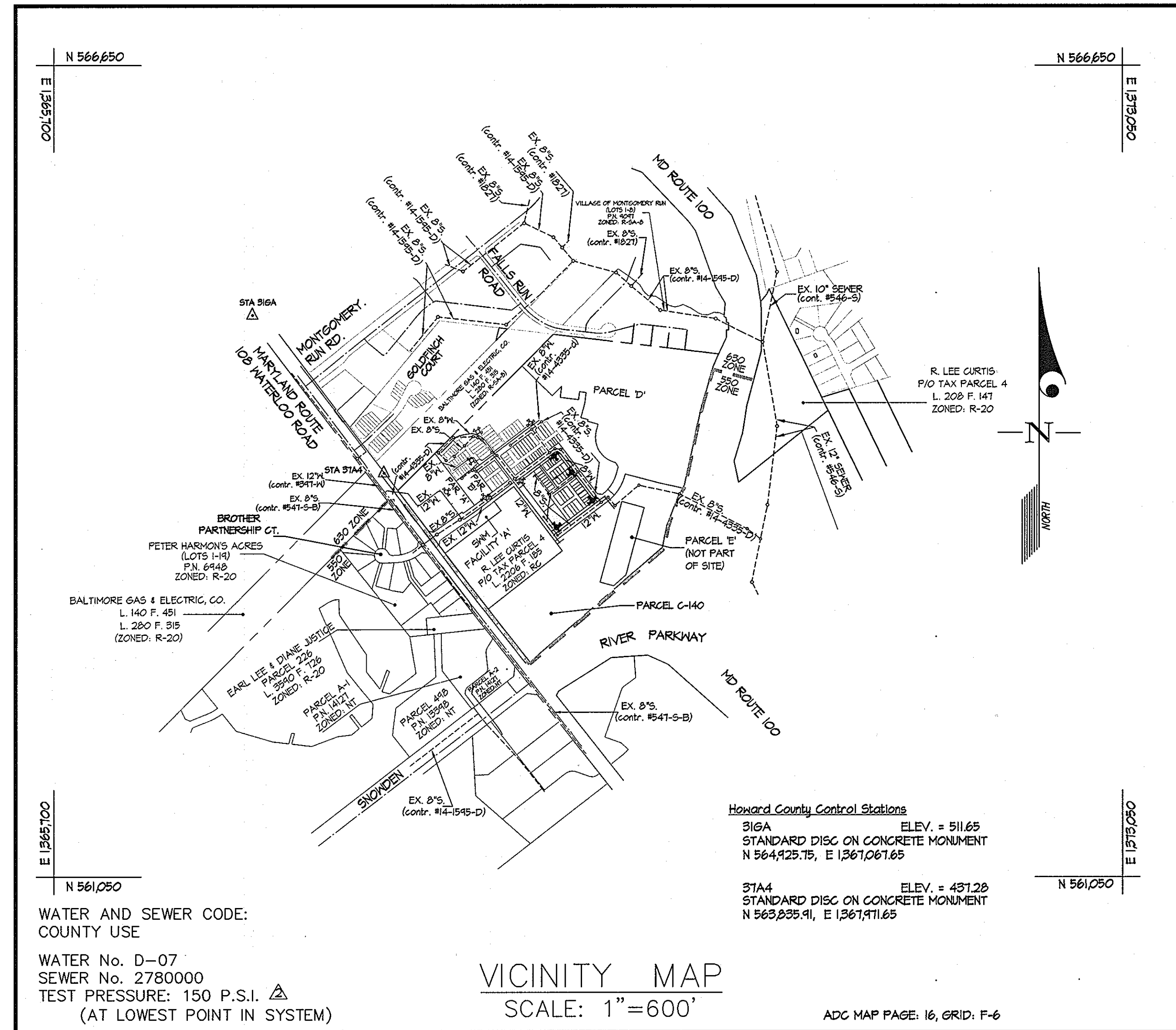
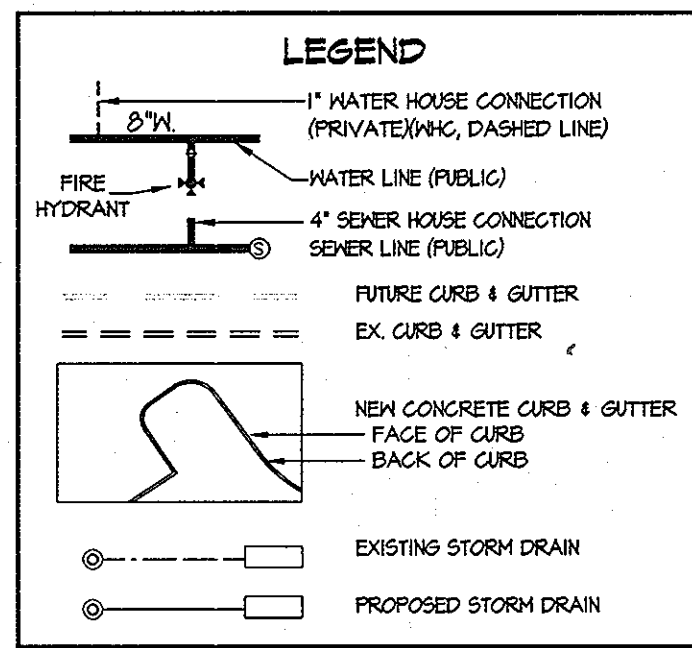
QUANTITIES				
ITEMS	QUANTITIES ESTIMATED	AS-BUILT		
		QUANTITIES	TYPE	MANUFACTURER/SUPPLIER
8" WATER	64 LF	64 LF	DR18/C-900	JMEAGLE/BELAIR RD SUPPLY
8" WATER MAIN	1264 LF	1,264 LF	DR18/C-900	JMEAGLE/BELAIR RD SUPPLY
12" WATER MAIN	845 LF	845 LF	DR-18/C-900	JMEAGLE/BELAIR RD SUPPLY
1" WHC	1,702 LF	1,808 LF	"K" COPPER	MUELLER CO./BELAIR RD SUPPLY
1 1/2" THIN WHC	105 LF	23 LF	"K" COPPER	MUELLER CO./BELAIR RD SUPPLY
4" WHC	40 LF	40 LF	"K" COPPER	MUELLER CO./BELAIR RD SUPPLY
8" SEWER MAIN	929 LF	929 LF	PVC SDR 35	JMEAGLE/BELAIR RD SUPPLY
4" SHC	621 LF	720 LF	PVC SDR 35	JMEAGLE/BELAIR RD SUPPLY
4" MANHOLE	4 EA.	4 EA.	PRECAST CONC.	ATLANTIC CONC. PRODUCTS
8" x 8" TEE	3 EA.	3 EA.	MJ EPOXY	SIGMA CORP./BELAIR RD SUPPLY
8" 1/8" H.B.	1 EA.	1 EA.	MJ EPOXY	SIGMA CORP./BELAIR RD SUPPLY
8" 1/16" H.B.	2 EA.	2 EA.	MJ EPOXY	SIGMA CORP./BELAIR RD SUPPLY
8" x 6" FHT	2 EA.	2 EA.	MJ EPOXY	SIGMA CORP./BELAIR RD SUPPLY
8" VALVE	6 EA.	6 EA.	GATE VALVE	MUELLER CO./BELAIR RD SUPPLY
6" VALVE	4 EA.	4 EA.	GATE VALVE	MUELLER CO./BELAIR RD SUPPLY
4" VALVE	1 EA.	1 EA.	GATE VALVE	MUELLER CO./BELAIR RD SUPPLY
12" x 4" TEE	1 EA.	1 EA.	MJ EPOXY	SIGMA CORP./BELAIR RD SUPPLY
12" x 8" TEE	1 EA.	1 EA.	MJ EPOXY	SIGMA CORP./BELAIR RD SUPPLY
12" x 12" TEE	1 EA.	1 EA.	MJ EPOXY	SIGMA CORP./BELAIR RD SUPPLY
12" x 6" FHT	2 EA.	2 EA.	MJ EPOXY	SIGMA CORP./BELAIR RD SUPPLY
12" VALVE	2 EA.	2 EA.	GATE VALVE	MUELLER CO./BELAIR RD SUPPLY
FIRE HYDRANT	4 EA.	4 EA.	HYDRANT	MUELLER CO./BELAIR RD SUPPLY
12" 1/32" V.B.	2 EA.			
8" 1/32" V.B.	4 EA.			
12" HIGH DEFLECTION COUPLER	6 EA.			
8" HIGH DEFLECTION COUPLER	11 EA.			

NAME OF UTILITY CONTRACTOR: **W. F. WILSON**

- NOTES:**
- ALL WATER HOUSE CONNECTIONS TO BE 1" WITH A 3/4" INSIDE METER, UNLESS NOTED OTHERWISE, SEE HO. CO. STD. DETAIL W.3.21 & W.3.30.
  - WATER HOUSE CONNECTIONS FOR LOTS C-116 & C-117 TO BE 1 1/2" THIN WHC SEE HO. CO. STD. DETAIL W.3.23 & W.3.30.

SURVEY AND DRAFTING DIV. CHECKBOX: AS-BUILT DATE: **6-09**

- SHEET INDEX**
- COVER SHEET
  - WATER AND SEWER EXTENSION PLAN
  - WATER AND SEWER EXTENSION PROFILES
- (3A) WATER AND SEWER AS-BUILTS**



CONTRACT No. 14-4334-D  
SHIPLEY'S GRANT  
PHASE 2  
HOWARD COUNTY, MARYLAND  
DEPARTMENT OF PUBLIC WORKS

TYPE OF BUILDING	RESIDENTIAL / COMMUNITY CENTER
NUMBER OF UNITS	72
NUMBER OF S.H.C.'s	4 1/2" SHC's / 1-4" SHC (BOUNDS WHC'S ONLY)
NUMBER OF W.H.C.'s	4 1/2" WHC's / 4" WHC'S / 2" THIN WHC
DRAINAGE AREA	DORSEY - PATAPSCO
TREATMENT PLANT	PATAPSCO WASTEWATER TREATMENT PLANT

- GENERAL NOTES**
- APPROXIMATE LOCATIONS OF EXISTING MAINS ARE SHOWN. THE CONTRACTOR SHALL TAKE ALL NECESSARY PRECAUTIONS TO PROTECT EXISTING MAINS AND SERVICES AND MAINTAIN UNINTERRUPTED SERVICE. ANY DAMAGE INCURRED SHALL BE REPAIRED IMMEDIATELY TO THE SATISFACTION OF THE ENGINEER AT THE CONTRACTOR'S EXPENSE.
  - AERIAL TOPOGRAPHIC FOR THIS PROJECT IS BY MCKENZIE SNYDER, INC. DATED 3/23/09.
  - HORIZONTAL AND VERTICAL SURVEY CONTROLS:
    - THE COORDINATES SHOWN ON THE DRAWINGS ARE BASED ON MARYLAND STATE REFERENCE SYSTEM NAD 83/11 AS PROJECTED BY HOWARD COUNTY GEODETIC CONTROL STATIONS No. 316A AND No. 314A.
    - ALL VERTICAL CONTROLS ARE BASED ON NAVD 88. VERTICAL CONTROLS PROVIDED ON DRAWINGS ARE NGVD '29.
  - ALL PIPE ELEVATIONS SHOWN ARE INVERT ELEVATIONS UNLESS OTHERWISE NOTED ON THE PLANS.
  - CLEAR ALL UTILITIES BY A MINIMUM OF 12 INCHES. CLEAR ALL POLES BY 5'-0" MINIMUM OR TUNNEL AS REQUIRED UNLESS OTHERWISE NOTED. THE OWNER HAS CONTACTED THE UTILITY COMPANIES AND HAS MADE ARRANGEMENTS FOR BRACING OF POLES AS SHOWN ON THE DRAWINGS. IN THE EVENT THE CONTRACTOR'S WORK REQUIRES BRACING OF ADDITIONAL POLES, ANY COST INCURRED BY THE OWNER FOR THE BRACING OF ADDITIONAL POLES OR DAMAGES SHALL BE DEDUCTED FROM MONIES OWED THE CONTRACTOR. THE CONTRACTOR SHALL COORDINATE WITH THE UTILITY COMPANIES TO SCHEDULE THE BRACING OF THE POLES.
  - FOR DETAILS NOT SHOWN ON THE DRAWING, AND FOR MATERIALS AND CONSTRUCTION METHODS, USE HOWARD COUNTY DESIGN MANUAL, VOLUME IV, STANDARD SPECIFICATIONS AND DETAILS FOR CONSTRUCTION (LATEST EDITION). THE CONTRACTOR SHALL HAVE A COPY OF VOLUME IV ON THE JOB.
  - WHERE TEST PITS HAVE BEEN MADE ON EXISTING UTILITIES, THEY ARE NOTED BY THE SYMBOL  $\Phi$  AT THE LOCATIONS OF THE TEST PITS. A NOTE OR NOTES CONTAINING THE RESULTS OF THE TEST PIT OR PITS IS INCLUDED ON THE DRAWINGS. EXISTING UTILITIES IN THE VICINITY OF THE PROPOSED WORK FOR WHICH TEST PITS HAVE NOT BEEN DUG SHALL BE LOCATED BY THE CONTRACTOR TWO WEEKS IN ADVANCE OF CONSTRUCTION OPERATIONS AT HIS OWN EXPENSE.
  - THE CONTRACTOR SHALL NOTIFY THE FOLLOWING UTILITY COMPANIES OR AGENCIES AT LEAST FIVE WORKING DAYS BEFORE STARTING WORK ON THESE PLANS:
 

ATT&T	1-800-252-1153
BGE (CONTRACTOR SERVICES)	410-850-4620
BGE (UNDER GROUND DAMAGE CONTROL)	410-685-1400
BUREAU OF UTILITIES	410-313-4400
COLONIAL PIPELINE CO.	410-745-1340
MISS UTILITY	1-800-257-7777
STATE HIGHWAY ADMINISTRATION	410-531-5533
VERIZON	1-800-743-0035 / 410-224-4210

- TREES AND SHRUBS ARE TO BE PROTECTED FROM DAMAGE TO THE MAXIMUM EXTENT. TREES AND SHRUBS LOCATED WITHIN THE CONSTRUCTION AREA STRIP ARE NOT TO BE REMOVED OR DAMAGED BY THE CONTRACTOR.
  - THE CONTRACTOR SHALL REMOVE TREES, STUMPS AND ROOTS ALONG THE LINE OF EXCAVATION. PAYMENT FOR SUCH REMOVAL SHALL BE INCLUDED IN THE UNIT PRICE BID FOR CONSTRUCTION OF THE MAIN.
  - THE CONTRACTOR SHALL NOTIFY THE BUREAU OF HIGHWAYS, HOWARD COUNTY, AT (410)-313-7450 AT LEAST FIVE WORKING DAYS BEFORE OPEN CUTTING OR BORING/JACKING OF ANY COUNTY ROAD FOR LAYING WATER/SEWER MAINS OR HOUSE CONNECTIONS. THE APPROVAL OF THESE DRAWINGS WILL CONSTITUTE COMPLIANCE WITH DPM REQUIREMENTS PER SECTION 18.114(a) OF THE HOWARD COUNTY CODE.
  - EXCEPT AS INDICATED ON THE PLANS, ALL PUBLIC WATER MAINS SHALL BE POLYVINYLCHLORIDE (PVC) PIPE MEETING THE REQUIREMENTS OF ANNA C400 DR18, PRESSURE CLASS 150 AND THE HOWARD COUNTY DESIGN MANUAL VOLUME IV- STANDARD SPECIFICATIONS AND DETAILS FOR CONSTRUCTION AND ALL SUBSEQUENT AMENDMENTS THERETO.
  - TOPS OF ALL WATER MAINS SHALL HAVE A MINIMUM OF 3'-6" OF COVER UNLESS OTHERWISE NOTED.
  - VALVES ADJACENT TO TEES SHALL BE STRAPPED TO TEES.
  - ALL FITTINGS SHALL BE BUTTRESSED OR ANCHORED WITH CONCRETE IN ACCORDANCE WITH STANDARD DETAILS UNLESS OTHERWISE PROVIDED FOR ON THE DRAWINGS.
  - FIRE HYDRANTS SHALL BE SET TO THE BURY LINE ELEVATIONS SHOWN ON THE DRAWINGS. ALL FIRE HYDRANTS SHALL BE RESTRAINED AND BUTTRESSED OR ANCHORED WITH CONCRETE IN ACCORDANCE WITH THE STANDARD DETAILS. THE SOIL AROUND THE FIRE HYDRANT SHALL BE COMPACTED IN ACCORDANCE WITH SECTION 1000 AND 1005 OF THE STANDARD SPECIFICATIONS.
  - THE CONTRACTOR SHALL NOT OPERATE ANY WATER MAIN VALVES ON THE EXISTING WATER SYSTEM.
  - ALL DUCTILE IRON PIPE (DIP) TO BE USED ON THE PUBLIC WATER SYSTEM SHALL BE CLASS 54. DUCTILE IRON FITTINGS SHALL MEET THE REQUIREMENTS OF THE HOWARD COUNTY DESIGN MANUAL VOLUME IV- STANDARD SPECIFICATIONS AND DETAILS FOR CONSTRUCTION.
  - FIRE HYDRANTS ARE D.I.P. ONLY.
  - VALVES ARE TO BE ATTACHED WITH IRON FITTINGS OR CONCRETE ACHORS.
  - THE DIMENSION RATIO FOR THE PVC MAIN SHALL BE DR 18.
  - WATER MAIN CONSTRUCTION SHALL CONSIST OF PVC MAIN WITH EPOXY COATED DIP FITTINGS OR PVC MAIN WITH PVC FITTINGS.
- PART III - SEWERS**
- ALL SEWER MAINS SHALL BE D.I.P. OR P.V.C. UNLESS OTHERWISE NOTED.
  - ALL MANHOLES SHALL BE 4'-0" INSIDE DIAMETER UNLESS OTHERWISE NOTED.
  - FORCE MAINS SHALL BE D.I.P. ONLY.
  - MANHOLES SHOWN WITH THE 12" AND 16" WALLS ARE FOR BRICK MANHOLES ONLY.
  - MANHOLES DESIGNATED M.T. IN PLAN AND PROFILE SHALL HAVE WATERTIGHT FRAME AND COVER. STANDARD DETAIL 06.52. WHERE WATERTIGHT MANHOLE FRAMES AND COVERS ARE USED, SET TOP OF FRAME 1'-6" ABOVE FINISHED GRADE UNLESS OTHERWISE NOTED ON THE DRAWINGS.
  - HOUSE(S) WITH THE SYMBOL "C.N.S." INDICATES THE CELLAR CANNOT BE SERVED.

**AS BUILT**  
DATE: **JUNE 2009**

GLW FILE #03006  
03006-FWS-02-PLAN.dwg

Sediment Control Measures will be implemented in accordance with Section 219 of the Specifications & with Road Drawings Plan F-07-59; Drawings for Sediment & Erosion Control.

REVIEWED FOR HOWARD SOIL CONSERVATION DISTRICT AND MEETS TECHNICAL REQUIREMENT.

*John R. Robertson* 8/26/08  
SIGNATURE DATE  
U.S.D.A. NATURAL RESOURCES CONSERVATION SERVICE

THIS DEVELOPMENT PLAN IS APPROVED FOR SOIL EROSION AND SEDIMENT CONTROL BY THE HOWARD SOIL CONSERVATION DISTRICT.

APPROVED: *[Signature]*  
HOWARD S.C.D. DATE

Professional Certification. I hereby certify that these documents were prepared or approved by me, and that I am a duly licensed professional engineer under the laws of the State of Maryland, License No. 14451 Expiration Date May 21, 2010.

DEVELOPER:  
BA WATERLOO TOWNHOMES, LLC  
c/o BOZZUTO HOMES, INC.  
1050 WALKER DRIVE SUITE 400  
GREENBELT, MARYLAND 20710  
ATTN: DUNCAN SLIDELL  
301-623-1525

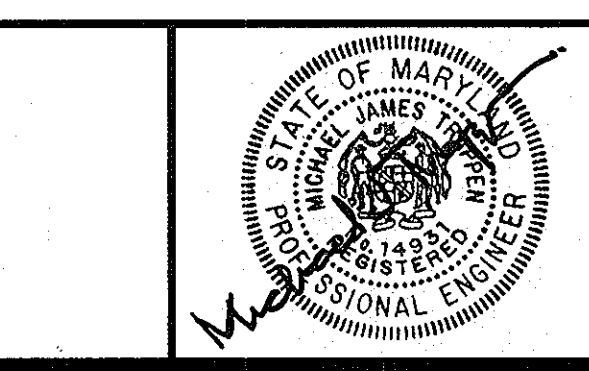
DEPARTMENT OF PUBLIC WORKS  
HOWARD COUNTY, MARYLAND

*John C. Combs*  
CHIEF, BUREAU OF UTILITIES DATE

DEPARTMENT OF PLANNING AND ZONING  
HOWARD COUNTY, MARYLAND

*John P. ...*  
CHIEF, DEVELOPMENT ENGINEERING DIVISION DATE

**GLW GUTSCHICK LITTLE & WEBER, P.A.**  
CIVIL ENGINEERS, LAND SURVEYORS, LAND PLANNERS, LANDSCAPE ARCHITECTS  
3909 NATIONAL DRIVE - SUITE 250 - BURTONSVILLE OFFICE PARK  
BURTONSVILLE, MARYLAND 20866  
TEL: 301-421-4024 BAL: 410-880-1820 DC/WA: 301-989-2524 FAX: 301-421-4186



DES: M/J	W/J	Rev Quantities Box	
DRN: M/J	JBD	ADDED NEW SHEET TO INDEX-3A	06/09
CHK: M/J	AWL	REVISED GENERAL NOTES AND QUANTITIES PER MATERIAL CHANGES. (REPLACEMENT SHEET)	07/15/09
DATE: JUNE 2007	M/SJ	REVISED QUANTITIES BOX	05/28/08
	BY	NO	REVISION

(REPLACEMENT SHEET)

TITLE SHEET  
SCALE: AS SHOWN

(THIS SHEET SUPERCEDES PLAN SIGNED 07/13/08)

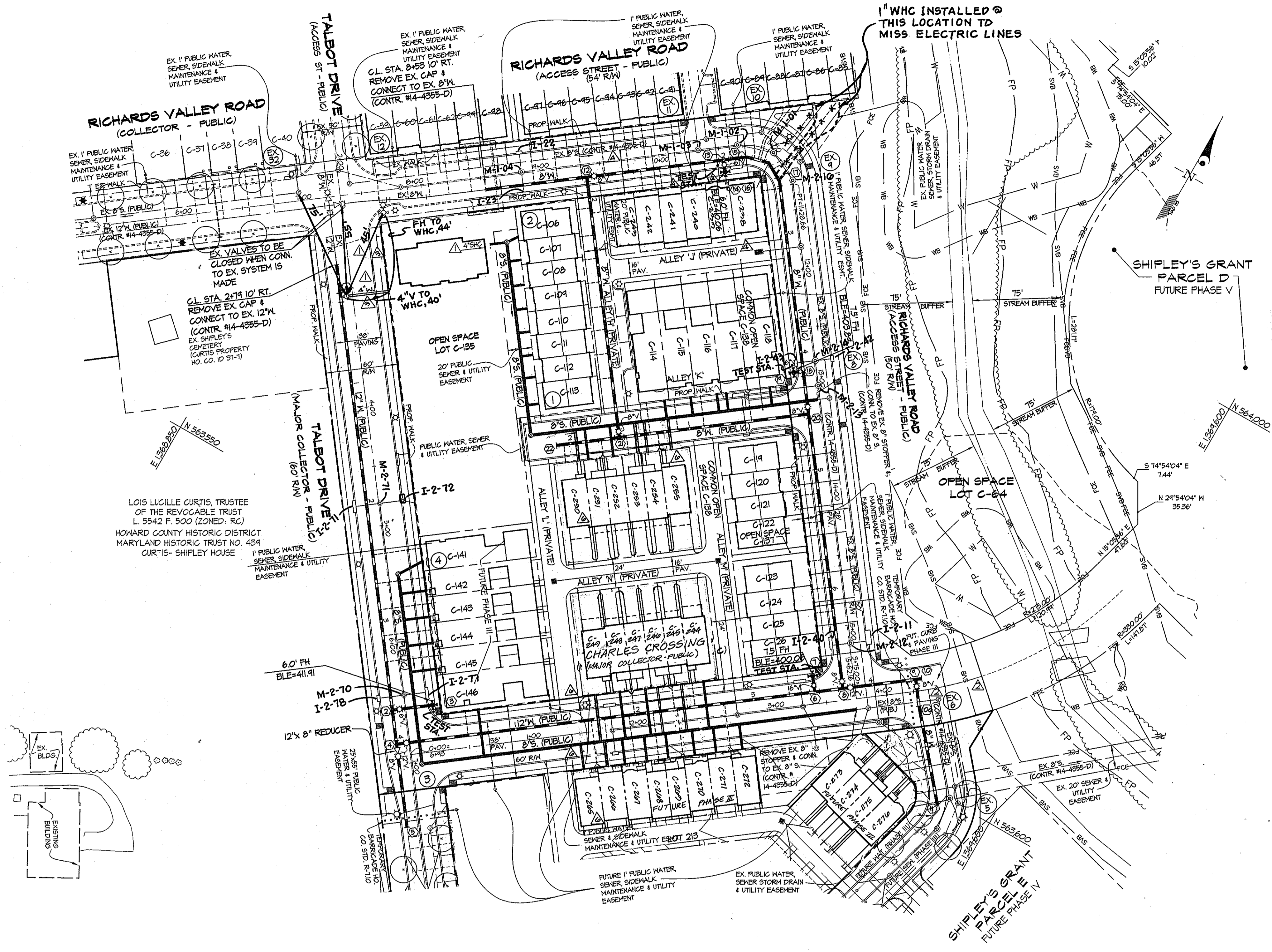
600' SCALE MAP NO. 37 BLOCK NO. 1 & 2

**SHIPLEY'S GRANT - PHASE 2**  
LOTS C-73 THRU C-134, OPEN SPACE LOTS C-135 THRU C-137, COMMON OPEN SPACE LOT C-138, BUILDABLE PARCELS C-139 & C-104 and NON-BUILDABLE PARCEL 'E'

HOWARD COUNTY, MARYLAND  
ELECTION DISTRICT No. 1  
CONTRACT No. 14-4334-D

SCALE AS SHOWN

SHEET 1 OF 3A



FOR PROFILES SEE SHEET 3 OF 3A

DEVELOPER:  
BA WATERLOO TOWNHOMES, LLC  
c/o BOZZUTO HOMES, INC.  
1850 WALKER DRIVE SUITE 400  
GREENBELT, MARYLAND 20770  
ATTN: DUNCAN SLIDELL  
301-623-1525

Professional Certification. I hereby certify that these documents were prepared or approved by me, and that I am a duly licensed professional engineer under the laws of the State of Maryland, License No. 14493 Expiration Date May 21, 2010.

SEWER MANHOLE LOCATIONS			
MH No.	NORTH	EAST	OFFSET
1	N 563694.8534	E 1364106.4011	
2	N 563814.5612	E 1364008.3804	
3	0+00 (CHARLES CROSSING)	9'00" RT.	
4	3+42 (TALBOT DRIVE)	4'00" LT.	

MINIMUM CELLAR ELEVATIONS			INV. @ R/WEST. ELEVATION	
LOT NO.	ELEVATION			
C-06	415.61			415.01
C-07	414.80			412.37
C-08	414.04			411.62
C-09	413.26			410.87
C-10	412.60			410.12
C-11	411.72			409.40
C-12	411.12			408.64
C-13	410.31			407.19
C-14	348.91			345.75
C-15	341.81			344.65
C-16	346.71			343.55
C-17	346.30			343.14
C-18	344.46			341.30
C-244	394.22			391.82
C-245	392.80			392.46
C-246	392.43			392.22
C-247	394.42			393.68
C-248	397.22			394.48
C-249	397.90			395.28
C-250	402.15			399.81
C-251	401.00			398.88
C-252	401.05			398.87
C-253	402.03			399.21
C-254	399.83			398.71
C-255	398.54			395.80
C-141	405.07			401.92
C-142	404.77			401.71
C-143	404.80			401.54
C-144	404.87			401.33
C-145	404.27			401.22
C-146	401.80			399.00
C-245	398.03			395.51
C-246	396.37			393.94
C-247	396.00			393.55
C-248	396.38			393.86
C-249	393.38			392.39
C-270	394.51			391.99
C-271	393.86			391.34
C-272	393.05			390.51

LOT FRONTAGE TABLE	
LOT No.	DISTANCE (feet)
C-06	24.00
C-07	20.00
C-08	20.00
C-09	20.00
C-10	20.00
C-11	20.00
C-12	20.00
C-13	21.00
C-14	25.00
C-15	22.00
C-16	22.00
C-17	22.00
C-18	22.00
C-19	21.00
C-20	20.00
C-21	20.00
C-22	21.00
C-23	20.00
C-24	20.00
C-25	20.00
C-26	24.00
C-244	25.00
C-245	16.00
C-246	16.00
C-247	16.00
C-248	16.00
C-249	16.00
C-250	25.00
C-251	16.00
C-252	16.00
C-253	16.00
C-254	16.00
C-255	25.00
C-141	22.00
C-142	22.00
C-143	22.00
C-144	22.00
C-145	22.00
C-146	20.00
C-245	20.00
C-246	20.00
C-247	20.00
C-248	20.00
C-249	20.00
C-270	20.00
C-271	20.00
C-272	21.00
C-273	17.00
C-274	16.00
C-275	16.00
C-276	9.85

WATER FITTING LOCATIONS RICHARDS VALLEY ROAD			
FITTING No.	FITTING TYPE	C.L. STATION	OFFSET
(2)	8"x8" TEE	9+38.24	10.00' RT.
(3)	8"x6" FHT	10+53.26	10.00' RT.
(4)	FIRE HYDRANT	10+53.26	20.00' RT.
(5)	8" 1/2" HB	10+73.87	9.83' RT.
(6)	8" 1/2" HB	10+94.53	8.52' RT.
(7)	8" 1/2" HB	11+23.38	9.12' RT.
(8)	8"x6" FHT	12+84.73	10.00' RT.
(9)	FIRE HYDRANT	12+84.73	18.00' RT.
(22)	8"x8" TEE	13+20.66	10.00' RT.

WATER FITTING LOCATIONS TALBOT DRIVE			
FITTING No.	FITTING TYPE	C.L. STATION	OFFSET
(1)	12"x4" TEE	7+00.12	10.00' RT.
(2)	12"x6" FHT	6+54.27	10.00' RT.
(3)	FIRE HYDRANT	6+54.27	23.67' LT.
(4)	12"x12" TEE	6+83.00	10.00' RT.
(5)	8" CAP & BUTTRESS	7+53.00	10.00' RT.

WATER FITTING LOCATIONS CHARLES CROSSING			
FITTING No.	FITTING TYPE	NORTH	EAST
(6)	12"x6" FHT	3+41.27	10.00' LT.
(7)	FIRE HYDRANT	3+41.27	23.67' LT.
(8)	12"x8" TEE	3+65.00	10.00' LT.
(9)	12"x8" TEE	4+26.34	10.00' LT.
(10)	12" CAP & BUTTRESS	4+31.53	9.83' LT.
(10A)	3.0"x3" HDC (Horiz.)	N 563595.4	E 1364500.2
(11)	8" CAP & BUTTRESS	N 563591.8471	E 1364554.4790

WATER FITTING LOCATIONS ALLEY 'K'			
FITTING No.	FITTING TYPE	NORTH	EAST
(2)	8"x8" TEE	N 563725.2140	E 1364111.2604
(22)	8" CAP & BUTTRESS	N 563693.2973	E 1364124.0586

VERTICAL BENDS / COUPLERS RICHARD'S VALLEY ROAD			
WATER LINE STATION	FITTING TYPE	NORTH	EAST
0+00	3.0"x3" HDC	N 563254.47	E 1368478.27
1+45	2.5"x2" HDC	N 563466.66	E 1369126.63
2+36	2.0"x2" HDC	N 563485.74	E 1369182.10
3+55	1.0"x1" HDC	N 563548.66	E 1369234.44
4+09	1.5"x1" HDC	N 563555.59	E 1369272.01
5+26	1.0"x1" HDC	N 563562.27	E 1369342.54
5+84	1.5"x1" HDC	N 563712.02	E 1369380.94
6+67	2.5"x2" HDC	N 563649.81	E 1369427.64

VERTICAL BENDS / COUPLERS TALBOT DRIVE			
WATER LINE STATION	FITTING TYPE	NORTH	EAST
0+61	1.0"x1" HDC	N 563683.88	E 1368491.70
1+65	1.5"x1" HDC	N 563800.93	E 1368494.44
4+16	0.5"x1" HDC	N 563400.74	E 1369145.84

VERTICAL BENDS / COUPLERS CHARLES CROSSING			
WATER LINE STATION	FITTING TYPE	NORTH	EAST
0+30	3.0"x3" HDC	N 563708.61	E 1368413.00
1+67	0.5"x1" HDC	N 563594.34	E 1368495.64
3+80	2.0"x2" HDC	N 563429.45	E 1369124.12
3+85	1.2" 1/2" LVB	N 563425.46	E 1369124.14
3+42	1.2" 1/2" LVB	N 563419.88	E 1369131.36
3+97	1.0"x1" HDC	N 563415.84	E 1369134.38

VERTICAL BENDS / COUPLERS 8" MAIN OFF OF STRUCTURE (4)			
WATER LINE STATION	FITTING TYPE	NORTH	EAST
0+34	8" 1/2" LVB	N 563646.72	E 1369507.54
0+43	8" 1/2" LVB	N 563634.80	E 1369513.44
0+70	8" 1/2" LVB	N 563619.35	E 1369530.98
0+90	8" 1/2" LVB	N 563604.15	E 1369543.97
0+94	1.5"x1" HDC	N 563591.81	E 1369544.82

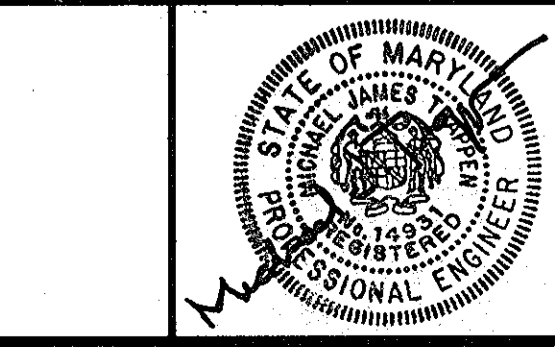
**AS BUILT**  
DATE: JUNE 2009

GLW FILE #03006  
03006-FWS-02-PLAN.dwg

DEPARTMENT OF PUBLIC WORKS  
HOWARD COUNTY, MARYLAND  
Slater C. Green  
CHIEF, BUREAU OF UTILITIES

DEPARTMENT OF PLANNING AND ZONING  
HOWARD COUNTY, MARYLAND  
John J. ...  
CHIEF, DEVELOPMENT ENGINEERING DIVISION

GLWGUTSCHICK LITTLE & WEBER, P.A.  
CIVIL ENGINEERS, LAND SURVEYORS, LAND PLANNERS, LANDSCAPE ARCHITECTS  
3909 NATIONAL DRIVE - SUITE 250 - BURTONTOWNE OFFICE PARK  
BURTONTOWNE, MARYLAND 20886  
TEL: 301-421-4024 FAX: 301-989-2524

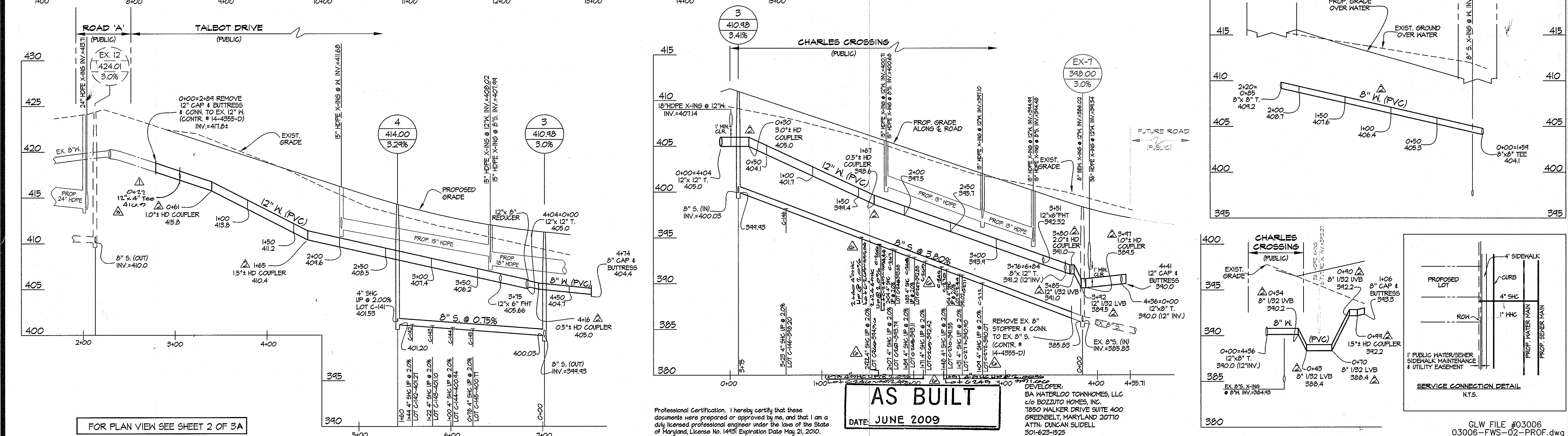
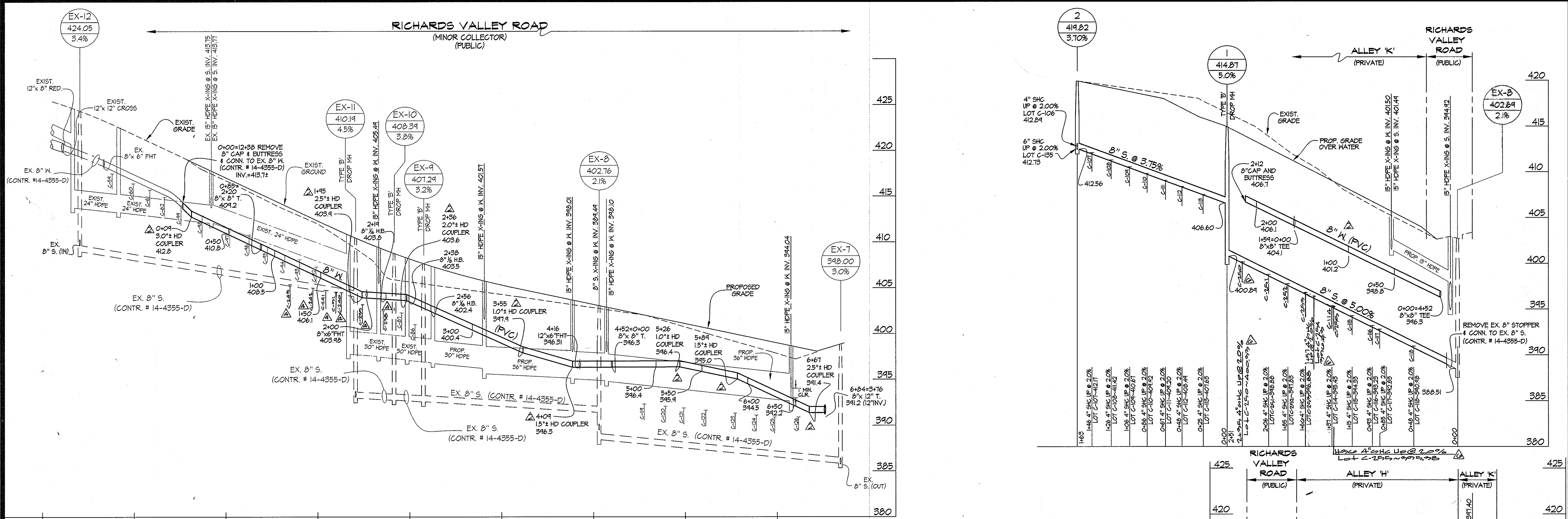


DES.	M/J	M/JT	REV. LOT LINES, UNITS, WHCS & GIC'S AND REVERSE CURVES PER RESUBDIVISION OF LOTS	05-11-10
DRN.	M/J		REPL. LOT LINES, UNITS, WHCS & GIC'S AND REVERSE CURVES PER RESUBDIVISION OF LOTS <td>10-21-09</td>	10-21-09
CHK.	M/JT		REPL. SIZE LOCATION WHC (at C-195) <td>08/11/09</td>	08/11/09
DATE:	JUNE	2007	REPLACED GRIMPS WITH VERTICAL BENDS PER MATERIAL CHANGE & ADDED TABLES. (REPLACEMENT SHEET)	07/15/08
DATE:	JUNE	2007	REVISED C-135 HOUSE CONNECTIONS	05/28/08
DATE:	JUNE	2007	BY NO	REVISION

(REPLACEMENT SHEET)  
WATER and SEWER EXTENSION PLAN  
PLAN SCALE: 1" = 50'  
(THIS SHEET SUPERCEDES PLAN SIGNED 07/13/08)  
600' SCALE MAP NO. 37 BLOCK NO. 1 & 2

SHIPLEY'S GRANT - PHASE 2  
LOTS C-73 THRU C-134, OPEN SPACE LOTS C-135 THRU C-137, COMMON OPEN SPACE LOT C-138, BUILDABLE PARCELS C-139 & C-104 and NON-BUILDABLE PARCEL 'E'  
HOWARD COUNTY, MARYLAND  
ELECTION DISTRICT No. 1  
CONTRACT No. 14-4334-D TAX MAP, 37 B-1

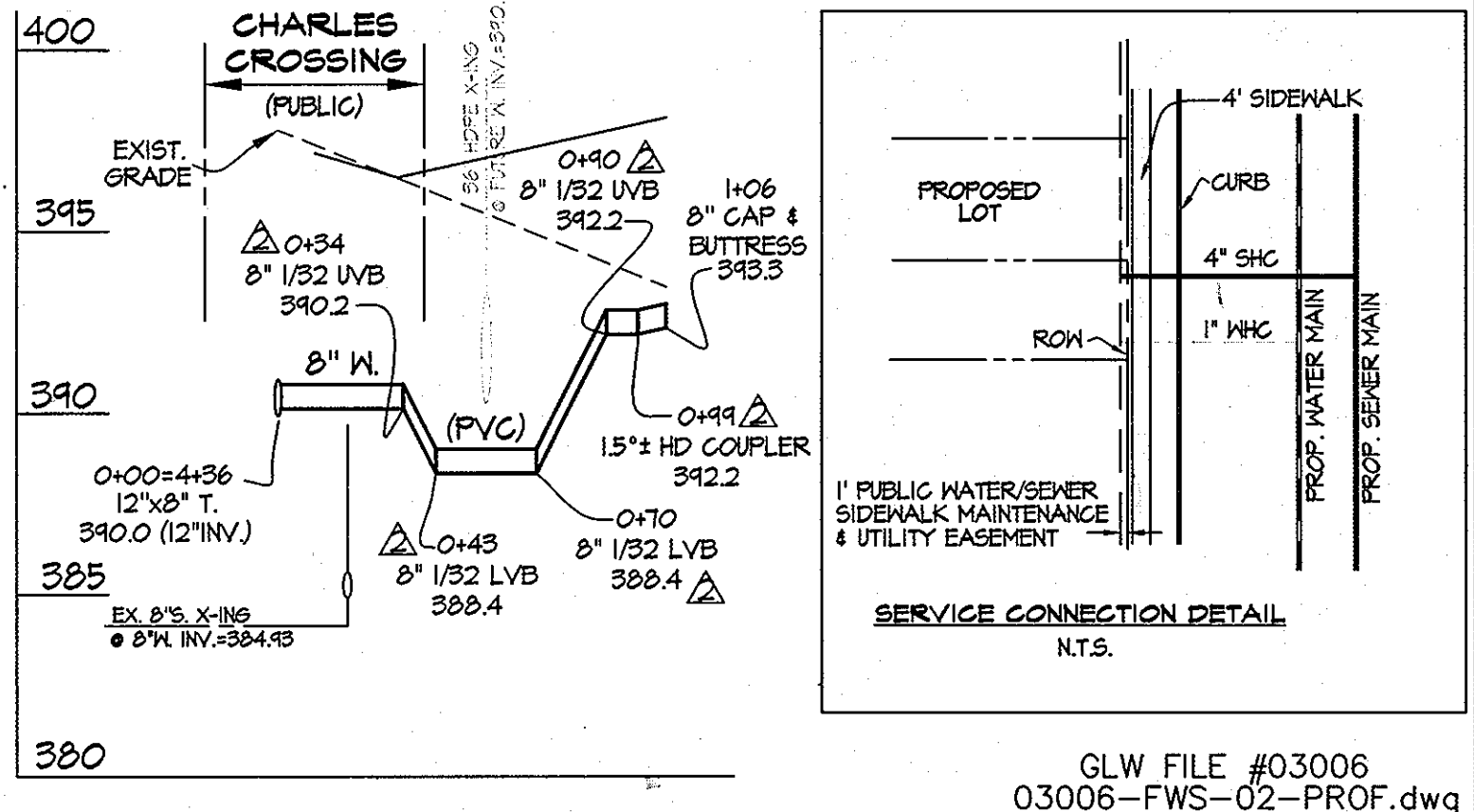
SCALE AS SHOWN  
SHEET 2 OF 3A



**AS BUILT**  
DATE: JUNE 2009

Professional Certification. I hereby certify that these documents were prepared or approved by me, and that I am a duly licensed professional engineer under the laws of the State of Maryland, License No. 14931 Expiration Date May 21, 2010.

DEVELOPER:  
BA WATERLOO TOWNHOMES, LLC  
c/o BOZZUTO HOMES, INC.  
1850 WALKER DRIVE SUITE 400  
GREENBELT, MARYLAND 20710  
ATTN: DUNCAN SLIDELL  
301-623-1525

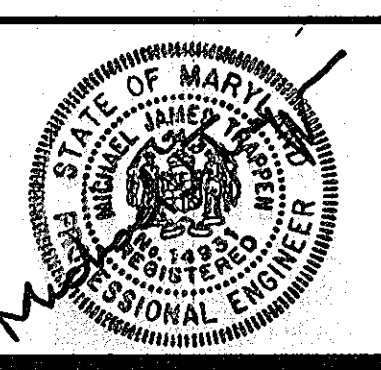


GLW FILE #03006  
03006-FWS-02-PROF.dwg

DEPARTMENT OF PUBLIC WORKS  
HOWARD COUNTY, MARYLAND  
*John C. Green*  
CHIEF, BUREAU OF UTILITIES

DEPARTMENT OF PLANNING AND ZONING  
HOWARD COUNTY, MARYLAND  
*Michael J. ...*  
CHIEF, DEVELOPMENT ENGINEERING DIVISION

**GLW GUTSCHICK LITTLE & WEBER, P.A.**  
CIVIL ENGINEERS, LAND SURVEYORS, LAND PLANNERS, LANDSCAPE ARCHITECTS  
3909 NATIONAL DRIVE - SUITE 250 - BURTONSVILLE OFFICE PARK  
BURTONSVILLE, MARYLAND 20866  
TEL: 301-421-4024 FAX: 410-880-1820 DC/WA: 301-989-2524 FAX: 301-421-4188



DES:	W&J	REVISION	DATE
DRN:	M&J	REV. Lot No. 11-10-10-10-10	10-21-09
CHK:	MJT	Add location W&C lot C-135	08/11/09
	AWL	REPLACED CRUMPS WITH VERTICAL BENDS PER MATERIAL CHANGE (REPLACEMENT SHEET)	07/15/08
DATE:	JUNE 2009	REVISED C-135 HOUSE CONNECTIONS	05/28/08
BY:	NO	REVISION	

(REPLACEMENT SHEET)  
**WATER and SEWER EXTENSION PROFILES**  
SCALE: 1" = 50' HORZ.  
(THIS SHEET SUPERCEDES PLAN SIGNED 07/13/08)  
600' SCALE MAP NO. 37 BLOCK NO. 1 & 2

**SHIPLEY'S GRANT - PHASE 2**  
LOTS C-73 THRU C-134, OPEN SPACE LOTS C-135 THRU C-137  
COMMON OPEN SPACE LOTS C-138, BUILDABLE PARCELS C-139 & C-104 and NON-BUILDABLE PARCEL 'E'  
HOWARD COUNTY, MARYLAND  
ELECTION DISTRICT No. 1  
CONTRACT NO. 14-4334-D TAX MAP: 37-B-1

SCALE AS SHOWN  
SHEET 3 OF 3A