

CONTRACT No. 24-4328-D

MAPLE LAWN FARMS

HILLSIDE DISTRICT - AREA 3

LOTS 109 THROUGH 212, OPEN SPACE LOTS 213 THROUGH 218,
AND COMMON OPEN SPACE AREAS 219 THROUGH 221

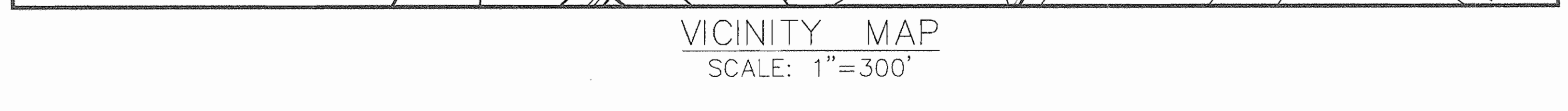
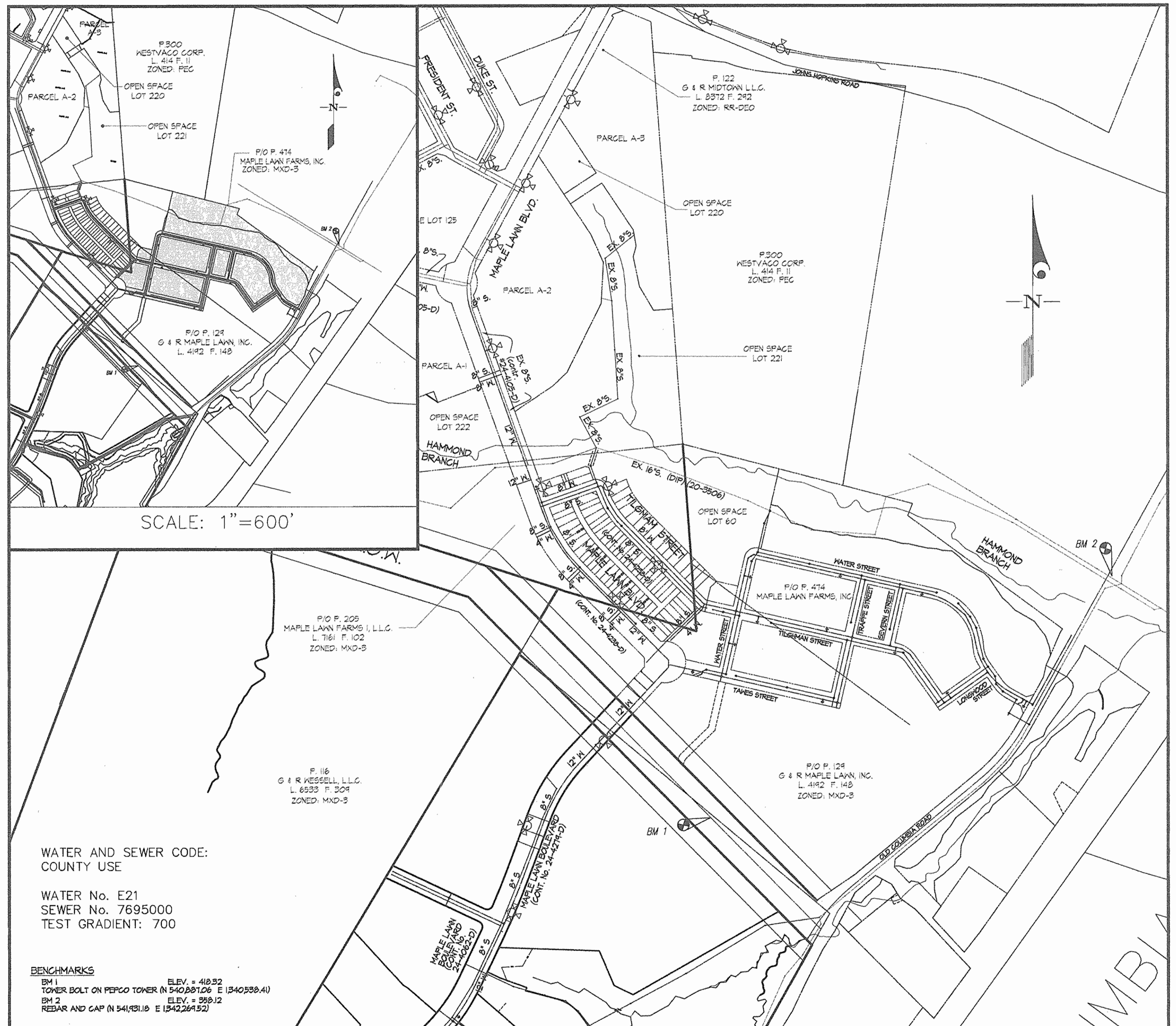
HOWARD COUNTY, MARYLAND DEPARTMENT OF PUBLIC WORKS

TYPE OF BUILDING	SINGLE FAMILY ATTACHED (63 UNITS) SINGLE FAMILY DETACHED (41 UNITS)
NUMBER OF UNITS	104
NUMBER OF S.H.C.'s	144
NUMBER OF W.H.C.'s	144
DRAINAGE AREA	LITTLE PATUXENT
TREATMENT PLANT	LITTLE PATUXENT WWTTP

ITEMS	QUANTITIES ESTIMATED	AS-BUILT		
		QUANTITIES	TYPE	MANUFACTURER/SUPPLIER
6" WATER (FHs)	150 LF	147 L.F.	D.I.P. CL52	GRIFFIN PIPE/SAME
8" WATER	4575 LF	4006 L.F.		
12" WATER	492 LF	1,103 L.F.		
1-1/2" W/C	2450 LF	2866 L.F.	COPPER	CERRO/H.D. SUPPLY
12" VALVE	4 EA	10 EA.	M.J. GATE (C-500)	KENNEDY/
12" CAP	3 EA	3 EA	M.J. C153	SIGMA/
12" x 12" T	2 EA	2 EA	"	"
12" x 8" T	1 EA	1 EA	"	"
12" x 6" T (FHT)	3 EA	3 EA	"	"
12" x 8" CROSS	2 EA	2 EA	"	"
12" 1/8" HB	2 EA	2 EA	"	"
12" x 8" REDUCER	1 EA	1 EA	"	"
8" VALVE	31 EA	31 EA	M.J. GATE C-500	SIGMA/H.D. SUPPLY
8" CAP	3 EA	3 EA	M.J. C153	"
8" x 8" T	5 EA	5 EA	"	"
8" x 6" T (FHT)	8 EA	8 EA	"	"
8" x 8" CROSS	5 EA	2 EA	"	"
8" 1/8" HB	3 EA	3 EA	"	"
8" 1/16" HB	3 EA	3 EA	"	"
FIRE HYDRANT - 5.0'	4 EA	7 EA	C-502	KENNEDY
FIRE HYDRANT - 6.5'	2 EA	2 EA	"	"
FIRE HYDRANT - 7.5'	1 EA	1 EA	"	"
FIRE HYDRANT - 8.0'	1 EA	1 EA	"	"
8" D.I.P. SEWER	350 LF	350 L.F.	CL-52 TYTON JOINT	GRIFFIN PIPE/SAME
8" P.V.C. SEWER	4870 LF	4870 L.F.	SDR-35	JM MANUFACTURING
4" P.V.C. (SH)	3500 LF	3,500	"	H.D. SUPPLY
M.H.s	32 EA	32 EA	ASTM C-478	ATLANTIC CONC./SAME
8" STOPPER	4 EA	4 EA	"	"

NAME OF UTILITY CONTRACTOR: **GAINE & CO. INC.**

SURVEY AND DRAFTING DIV. CHECKBOX: AS-BUILT DATE: _____



GENERAL NOTES

- PART I**
- APPROXIMATE LOCATIONS OF EXISTING MAINS ARE SHOWN. THE CONTRACTOR SHALL TAKE ALL NECESSARY PRECAUTIONS TO PROTECT EXISTING MAINS AND SERVICES AND MAINTAIN UNINTERRUPTED SERVICE. ANY DAMAGE INCURRED SHALL BE REPAIRED IMMEDIATELY TO THE SATISFACTION OF THE ENGINEER AT THE CONTRACTOR'S EXPENSE.
 - TOPOGRAPHY INDICATED HAS TAKEN FROM AERIAL TOPOGRAPHY PREPARED DURING MARCH 1991 BY BDI.
 - HORIZONTAL AND VERTICAL SURVEY CONTROLS: THE COORDINATES SHOWN ON THE DRAWINGS ARE BASED ON MARYLAND STATE REFERENCE SYSTEM NAD '83/'91 AS PROJECTED BY HOWARD COUNTY GEODETIC CONTROL STATIONS NO. 46B2, NO. 41EA, AND NO. 41EB. ALL VERTICAL CONTROLS ARE BASED ON NAVD '88. VERTICAL CONTROLS PROVIDED ON DRAWINGS ARE STANDARD DISCS ON CONCRETE MONUMENTS.
 - ALL PIPE ELEVATIONS SHOWN ARE INVERT ELEVATIONS UNLESS OTHERWISE NOTED ON THE PLANS.
 - CLEAR ALL UTILITIES BY A MINIMUM OF 12 INCHES. CLEAR ALL POLES BY 5'-0" MINIMUM OR TUNNEL AS REQUIRED UNLESS OTHERWISE NOTED. THE OWNER HAS CONTACTED THE UTILITY COMPANIES AND HAS MADE ARRANGEMENTS FOR BRACING OF POLES AS SHOWN ON THE DRAWINGS. IN THE EVENT THE CONTRACTOR'S WORK REQUIRES BRACING OF ADDITIONAL POLES, ANY COST INCURRED BY THE OWNER FOR THE BRACING OF ADDITIONAL POLES OR DAMAGES SHALL BE DEDUCTED FROM MONIES OWED THE CONTRACTOR. THE CONTRACTOR SHALL COORDINATE WITH THE UTILITY COMPANIES TO SCHEDULE THE BRACING OF THE POLES.
 - FOR DETAILS NOT SHOWN ON THE DRAWINGS, AND FOR MATERIALS AND CONSTRUCTION METHODS, USE HOWARD COUNTY DESIGN MANUAL, VOLUME IV, STANDARD SPECIFICATIONS AND DETAILS FOR CONSTRUCTION (LATEST EDITION). THE CONTRACTOR SHALL HAVE A COPY OF VOLUME IV ON THE JOB.
 - WHERE TEST PITS HAVE BEEN MADE ON EXISTING UTILITIES, THEY ARE NOTED BY THE SYMBOL (P) AT THE LOCATIONS OF THE TEST PITS. A NOTE OR NOTES CONTAINING THE RESULTS OF THE TEST PIT OR PITS IS INCLUDED ON THE DRAWINGS. EXISTING UTILITIES IN THE VICINITY OF THE PROPOSED WORK FOR WHICH TEST PITS HAVE NOT BEEN DUG SHALL BE LOCATED BY THE CONTRACTOR TWO WEEKS IN ADVANCE OF CONSTRUCTION OPERATIONS AT HIS OWN EXPENSE.
 - THE CONTRACTOR SHALL NOTIFY THE FOLLOWING UTILITY COMPANIES OR AGENCIES AT LEAST FIVE WORKING DAYS BEFORE STARTING WORK ON THESE PLANS:

AT&T	1-800-252-1133
BGE (CONTRACTOR SERVICES)	410-850-4620
BGE (UNDER GROUND DAMAGE CONTROL)	410-685-1400
BUREAU OF UTILITIES	410-313-4900
COLONIAL PIPELINE CO.	410-745-1340
MISS UTILITY	1-800-251-1111
STATE HIGHWAY ADMINISTRATION	410-531-5533
VERIZON	1-800-743-0033 / 410-224-9210
 - TREES AND SHRUBS ARE TO BE PROTECTED FROM DAMAGE TO THE MAXIMUM EXTENT. TREES AND SHRUBS LOCATED WITHIN THE CONSTRUCTION AREA STRIP ARE NOT TO BE REMOVED OR DAMAGED BY THE CONTRACTOR.
 - THE CONTRACTOR SHALL REMOVE TREES, STUMPS AND ROOTS ALONG THE LINE OF EXCAVATION. PAYMENT FOR SUCH REMOVAL SHALL BE INCLUDED IN THE UNIT PRICE BID FOR CONSTRUCTION OF THE MAIN.
 - THE CONTRACTOR SHALL NOTIFY THE BUREAU OF HIGHWAYS, HOWARD COUNTY, AT (410)-313-7450 AT LEAST FIVE WORKING DAYS BEFORE OPEN CUTTING OR BORING/JACKING OF ANY COUNTY ROAD FOR LAYING WATER/SEWER MAINS OR HOUSE CONNECTIONS. THE APPROVAL OF THESE DRAWINGS WILL CONSTITUTE COMPLIANCE WITH DFN REQUIREMENTS PER SECTION 8.11.4(G) OF THE HOWARD COUNTY CODE.
 - ALL BUILDABLE LOTS SHOWN HEREON SHALL HAVE ONE (1) FOOT WIDE PUBLIC EASEMENT ADJACENT TO THE PUBLIC ROAD RIGHT OF WAY, FOR THE PURPOSE OF SIDEWALK MAINTENANCE, WATER HOUSE CONNECTION AND SEWER HOUSE CONNECTION.

- PART II - WATER**
- ALL MAINS SHALL BE D.I.P. CLASS 52 UNLESS OTHERWISE NOTED.
 - TOPS OF ALL WATER MAINS SHALL HAVE A MINIMUM OF 3'-6" OF COVER UNLESS OTHERWISE NOTED.
 - VALVES ADJACENT TO TEES SHALL BE STRAPPED TO TEES.
 - ALL FITTINGS SHALL BE BUTTRESSED OR ANCHORED WITH CONCRETE IN ACCORDANCE WITH STANDARD DETAILS UNLESS OTHERWISE PROVIDED FOR ON THE DRAWINGS.
 - FIRE HYDRANTS SHALL BE SET TO THE BURY LINE ELEVATIONS SHOWN ON THE DRAWINGS. ALL FIRE HYDRANTS SHALL BE INSTALLED IN ACCORDANCE WITH STANDARD DETAILS. THE SOIL AROUND THE FIRE HYDRANT SHALL BE COMPACTED IN ACCORDANCE WITH SECTION 1000 AND SECTION 1005 OF THE STANDARD SPECIFICATIONS.
 - THE CONTRACTOR SHALL NOT OPERATE ANY WATER MAIN VALVES ON THE EXISTING WATER SYSTEM.

- PART III - SEWER**
- ALL SEWER MAINS SHALL BE D.I.P. OR P.V.C. UNLESS OTHERWISE NOTED.
 - ALL MANHOLES SHALL BE 4'-0" INSIDE DIAMETER UNLESS OTHERWISE NOTED.
 - FORCE MAINS SHALL BE D.I.P. ONLY.
 - MANHOLES SHOWN WITH THE 12" AND 16" WALLS ARE FOR BRICK MANHOLES ONLY.
 - MANHOLES DESIGNATED M.T. IN PLAN AND PROFILE SHALL HAVE WATERTIGHT FRAME AND COVER, STANDARD DETAIL 6552. WHERE WATERTIGHT MANHOLE FRAMES AND COVERS ARE USED, SET TOP OF FRAME 1'-6" ABOVE FINISHED GRADE UNLESS OTHERWISE NOTED ON THE DRAWINGS.
 - HOUSE(S) WITH THE SYMBOL "C.N.S." INDICATES THE CELLAR CANNOT BE SERVED.

SEDIMENT CONTROL MEASURES WILL BE IMPLEMENTED IN ACCORDANCE WITH SECTION 219 OF THE SPECIFICATIONS, WITH ROAD DRAWINGS PLAN F-06(1), SHEETS 10 THRU 11 FOR SEDIMENT & EROSION CONTROL, AND WITH THESE PLANS.

REVIEWED FOR HOWARD SOIL CONSERVATION DISTRICT AND MEETS TECHNICAL REQUIREMENT.

Jim Murray 9/14/06
SIGNATURE DATE
U.S.D.A. NATURAL RESOURCES CONSERVATION SERVICE

THIS DEVELOPMENT PLAN IS APPROVED FOR SOIL EROSION AND SEDIMENT CONTROL BY THE HOWARD SOIL CONSERVATION DISTRICT.

OWNER
G & R MAPLE LAWN LLC
SUITE 500 WOODHOLME CENTER
1829 REISTERSTOWN ROAD
BALTIMORE, MD 21208
ATTN: CHARLIE O'DONOVAN
410-484-8400

APPROVED:
John R. Roberts 9/14/06
HOWARD S.C.D.

DEPARTMENT OF PUBLIC WORKS
HOWARD COUNTY, MARYLAND

John R. Roberts 9-6-06
CHIEF, BUREAU OF UTILITIES DATE

DEPARTMENT OF PLANNING AND ZONING
HOWARD COUNTY, MARYLAND

William J. Jones 9/14/06
CHIEF, DEVELOPMENT ENGINEERING DIVISION DATE

GLW GUTSCHICK LITTLE & WEBER, P.A.
CIVIL ENGINEERS, LAND SURVEYORS, LAND PLANNERS, LANDSCAPE ARCHITECTS
3909 NATIONAL DRIVE - SUITE 250 - BURTONSVILLE OFFICE PARK
BURTONSVILLE, MARYLAND 20866
TEL: 301-421-4024 BAL: 410-681-1500 DC/VA: 301-689-2524 FAX: 301-421-4186



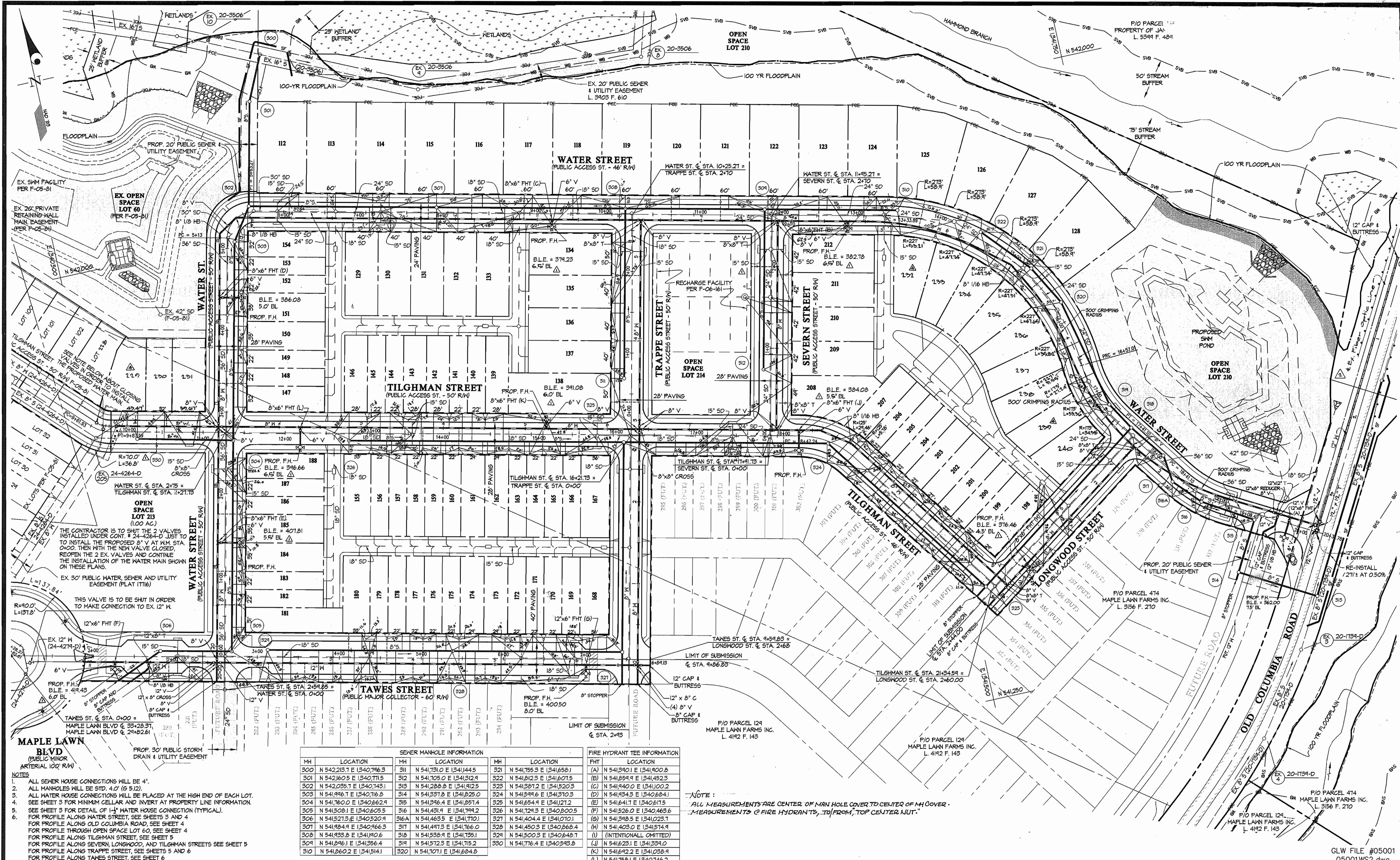
DES: DEV	
DRN: TL/DV	
CHK: DEV	
DATE: Aug 2007	
KCI	1
BY	NO
AS-BUILT DATA SHOWN	
REVISION	9/15/07
DATE	600' SCALE MAP NO. 46
	BLOCK NO. 4

TITLE SHEET
SCALE: AS SHOWN

MAPLE LAWN FARMS
CONTRACT No. 24-4328-D
HILLSIDE DISTRICT - AREA 3
LOTS 109 THROUGH 212, OPEN SPACE LOT 213 THROUGH 218,
AND COMMON OPEN AREAS 219 THROUGH 221
HOWARD COUNTY, MARYLAND
ELECTION DISTRICT No. 5

SCALE AS SHOWN
SHEET 1 OF 7

GLW FILE #05001
05001WS1.dwg



- NOTES:**
1. ALL SEWER HOUSE CONNECTIONS WILL BE 4".
 2. ALL MANHOLES WILL BE STD. 4.0' (Ø 5.12).
 3. ALL WATER HOUSE CONNECTIONS WILL BE PLACED AT THE HIGH END OF EACH LOT.
 4. SEE SHEET 3 FOR MINIMUM CELLAR AND INVERT AT PROPERTY LINE INFORMATION.
 5. SEE SHEET 3 FOR DETAIL OF 1 1/2" WATER HOUSE CONNECTION (TYPICAL).
 6. FOR PROFILE ALONG WATER STREET, SEE SHEETS 3 AND 4.
 7. FOR PROFILE ALONG OLD COLUMBIA ROAD, SEE SHEET 4.
 8. FOR PROFILE THROUGH OPEN SPACE LOT 60, SEE SHEET 4.
 9. FOR PROFILE ALONG TILGHMAN STREET, SEE SHEET 5.
 10. FOR PROFILE ALONG SEVERN, LONGWOOD, AND TILGHMAN STREETS SEE SHEET 5.
 11. FOR PROFILE ALONG TRAPPE STREET, SEE SHEETS 5 AND 6.
 12. FOR PROFILE ALONG TAWES STREET, SEE SHEET 6.

SEWER MANHOLE INFORMATION			FIRE HYDRANT TEE INFORMATION				
MH	LOCATION	LOCATION	MH	LOCATION	FHT	LOCATION	
300	N 542,215.1 E 1340,796.3	311	N 541,731.0 E 1341,444.5	321	N 541,755.3 E 1341,658.1	(A)	N 541,390.1 E 1341,900.8
301	N 542,160.5 E 1340,711.5	312	N 541,705.0 E 1341,312.4	322	N 541,812.3 E 1341,607.5	(B)	N 541,854.9 E 1341,453.3
302	N 542,035.1 E 1340,749.1	313	N 541,288.8 E 1341,912.5	323	N 541,381.2 E 1341,520.3	(C)	N 541,940.0 E 1341,100.2
303	N 541,996.7 E 1340,716.9	314	N 541,331.8 E 1341,825.0	324	N 541,599.8 E 1341,570.3	(D)	N 541,934.3 E 1340,884.1
304	N 541,760.0 E 1340,862.9	315	N 541,346.4 E 1341,857.4	325	N 541,654.9 E 1341,121.2	(E)	N 541,641.7 E 1340,617.5
305	N 541,508.1 E 1340,805.5	316	N 541,431.9 E 1341,799.2	326	N 541,294.3 E 1340,800.5	(F)	N 541,526.0 E 1340,463.6
306	N 541,521.3 E 1340,520.9	316A	N 541,463.5 E 1341,770.1	327	N 541,404.4 E 1341,070.1	(G)	N 541,398.5 E 1341,023.7
307	N 541,984.9 E 1340,966.3	317	N 541,497.3 E 1341,766.0	328	N 541,450.3 E 1340,868.4	(H)	N 541,403.0 E 1341,514.9
308	N 541,933.8 E 1341,100.6	318	N 541,538.9 E 1341,735.1	329	N 541,500.3 E 1340,649.7	(I)	(INTENTIONAL OMITTED)
309	N 541,846.1 E 1341,356.4	319	N 541,572.3 E 1341,715.2	330	N 541,716.4 E 1340,594.8	(J)	N 541,623.1 E 1341,339.0
310	N 541,860.2 E 1341,314.1	320	N 541,707.1 E 1341,684.8			(K)	N 541,692.2 E 1341,058.9
						(L)	N 541,758.1 E 1340,746.2

NOTE: ALL MEASUREMENTS ARE CENTER OF MAN HOLE COVER TO CENTER OF MH COVER. MEASUREMENTS OF FIRE HYDRANTS, TO FROM, TOP CENTER JUT.

DEPARTMENT OF PUBLIC WORKS
HOWARD COUNTY, MARYLAND

R. J. ...
CHIEF, BUREAU OF UTILITIES

DEPARTMENT OF PLANNING AND ZONING
HOWARD COUNTY, MARYLAND

...
CHIEF, DEVELOPMENT ENGINEERING DIVISION

GLWGUTSCHICK LITTLE & WEBER, P.A.
CIVIL ENGINEERS, LAND SURVEYORS, LAND PLANNERS, LANDSCAPE ARCHITECTS
3909 NATIONAL DRIVE - SUITE 250 - BURTENVILLE OFFICE PARK
BURTENVILLE, MARYLAND 20866
TEL: 301-421-4024 FAX: 410-880-1820 DC/VA: 301-989-2524 FAX: 301-421-4186



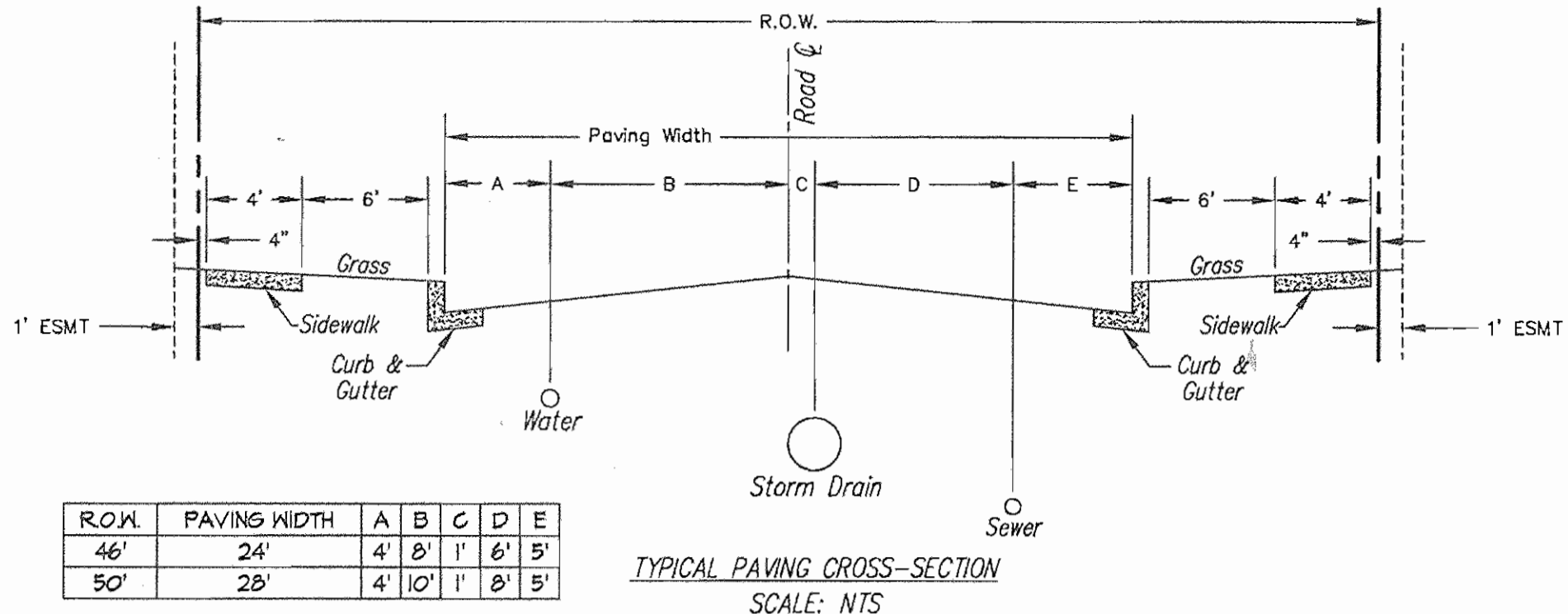
DES: DEV			
DRN: TL/DV	k/lp	10/29/07	
CHK: DEV	KCI	09/17/07	
DATE: 08/06	k/lp	11/19/07	
BY	NO	REVISION	DATE

"AS-BUILT" SEWER EXTENSION PLAN

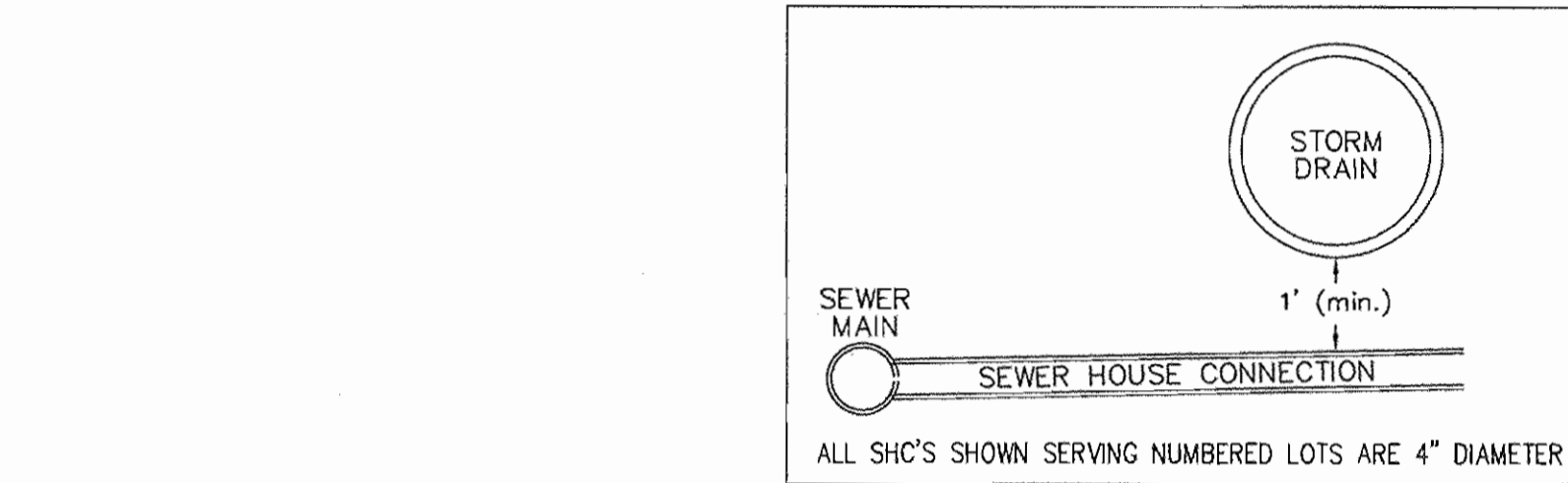
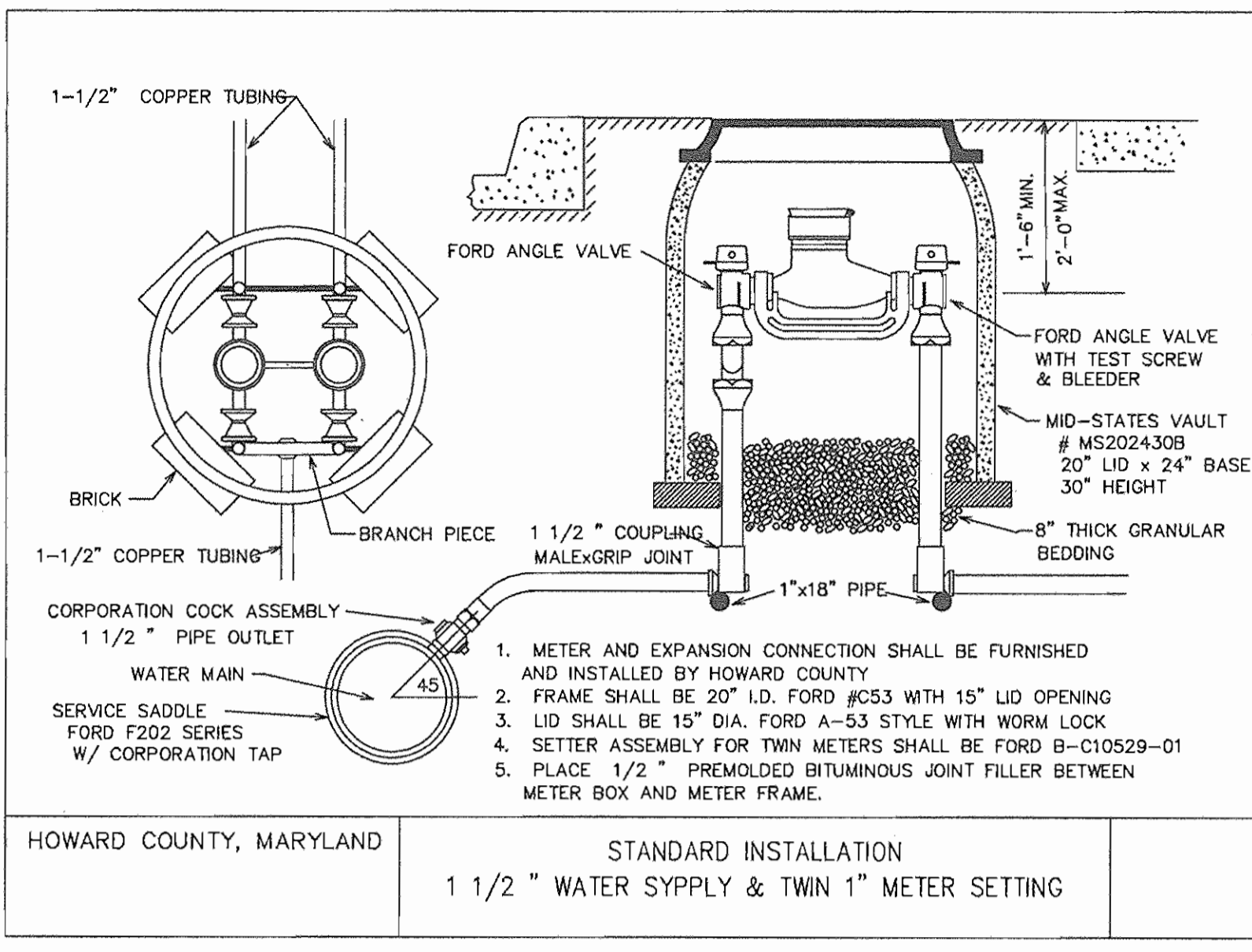
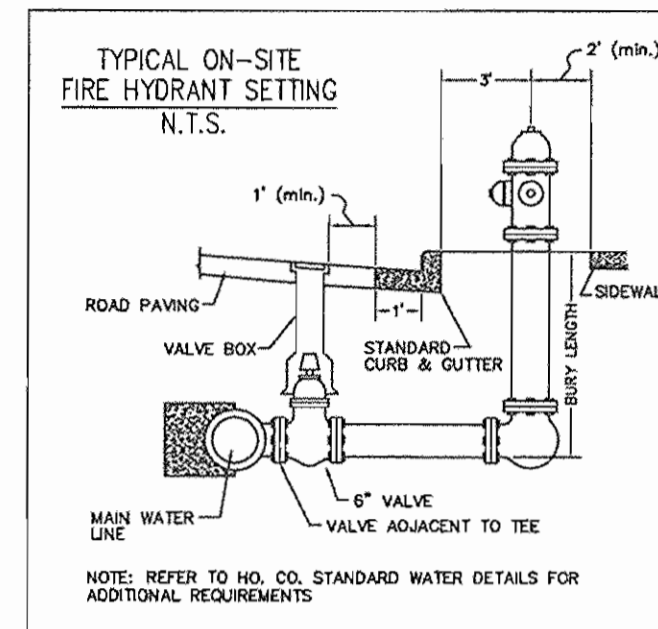
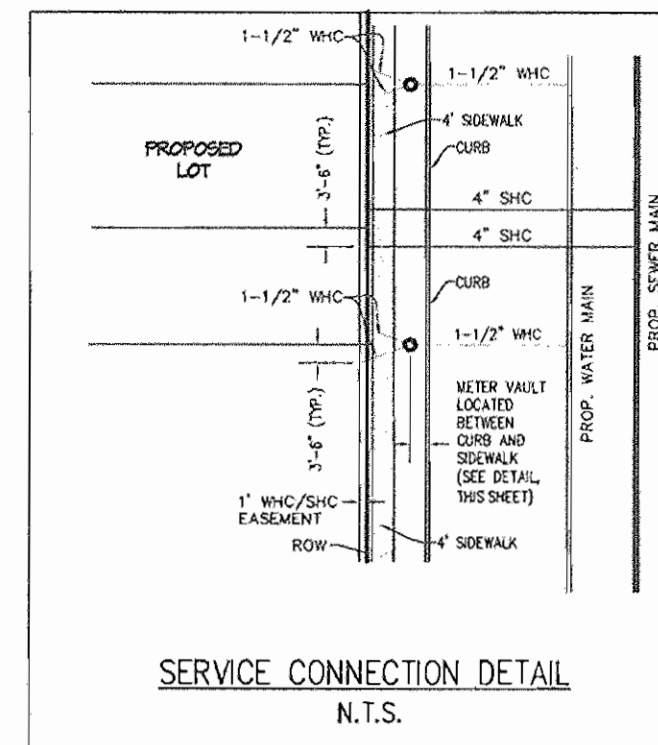
600' SCALE MAP NO. 46 BLOCK NO. 4

MAPLE LAWN FARMS
CONTRACT No. 24-4328-D
HILLSIDE DISTRICT - AREA 3
LOTS 109 THROUGH 212, OPEN SPACE LOT 213 THROUGH 218, AND COMMON OPEN AREAS 219 THROUGH 221
HOWARD COUNTY, MARYLAND
ELECTION DISTRICT No. 5

SCALE 1"=50'
SHEET 2 OF 7



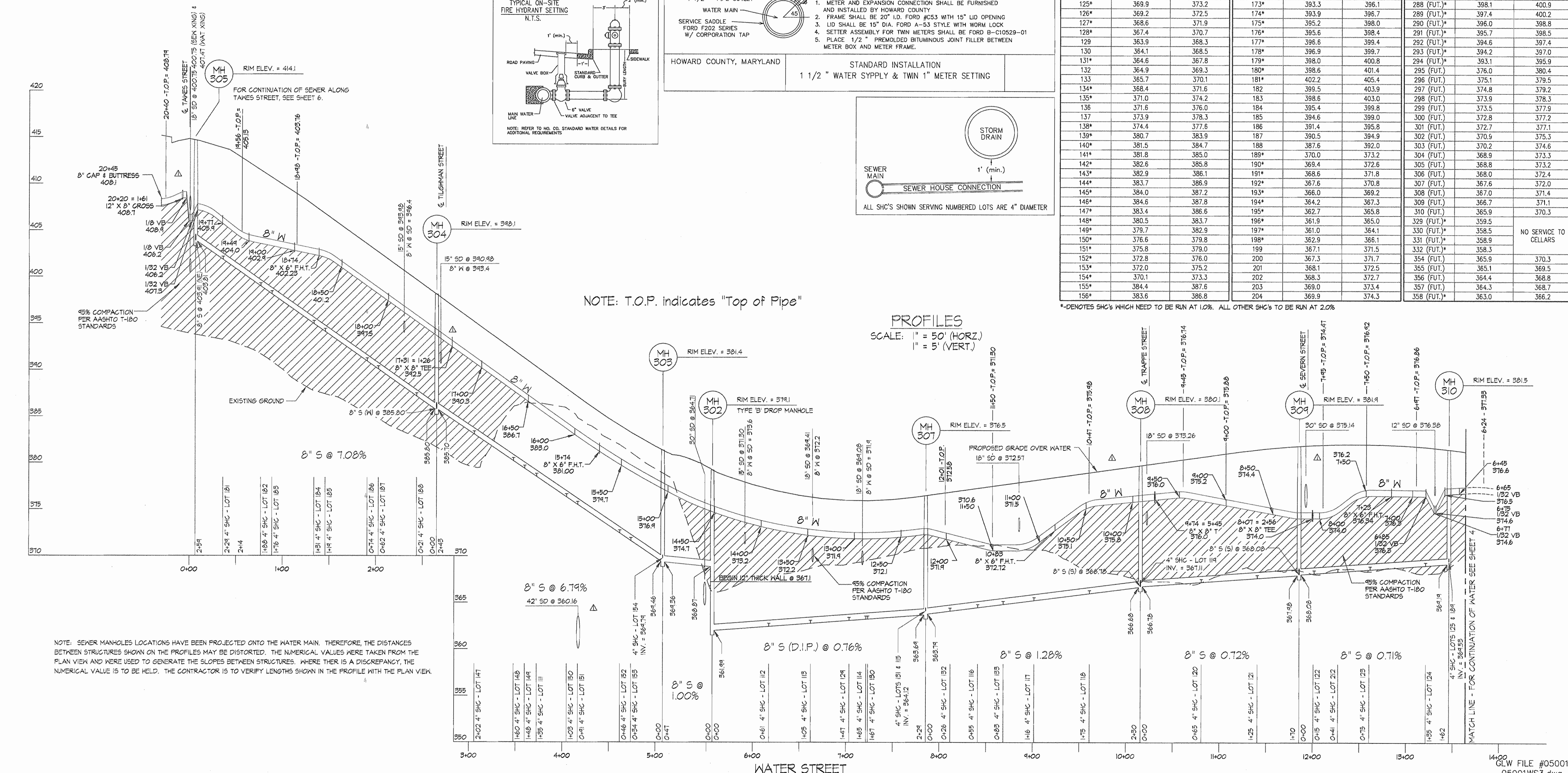
R.O.W.	PAVING WIDTH	A	B	C	D	E
46'	24'	4'	8'	1'	6'	5'
50'	28'	4'	10'	1'	8'	5'



MINIMUM CELLAR ELEVATIONS (M.C.E.)

LOT NO.	INV. @ R/W	M.C.E.	LOT NO.	INV. @ R/W	M.C.E.	LOT NO.	INV. @ R/W	M.C.E.
109*	388.9	392.2	157*	383.5	386.7	205	370.0	374.4
110*	387.1	390.4	158*	382.7	385.9	206	370.9	375.3
111*	387.9	391.2	159*	382.2	385.4	207	371.2	375.6
112	362.9	367.5	160*	382.0	385.2	208*	372.6	375.8
113	363.3	367.9	161*	381.1	384.3	209*	372.0	375.2
114	363.7	368.3	162*	380.9	384.1	210	371.1	375.5
115	364.6	369.2	163*	380.0	383.2	211	370.8	375.2
116	365.0	369.6	164*	379.8	383.0	212	369.2	373.6
117	365.7	370.3	165*	379.0	382.2	280 (FUT.)	406.3	409.5
118	366.5	371.1	166*	378.9	382.1	281 (FUT.)	404.9	407.7
119	367.6	372.2	167*	377.7	380.9	282 (FUT.)	403.2	406.8
120	367.7	372.3	168*	388.7	391.5	283 (FUT.)	401.9	404.7
121	368.2	372.8	169*	390.3	393.1	284 (FUT.)	401.6	404.4
122	368.7	373.3	170*	390.8	393.6	285 (FUT.)	400.5	403.3
123	369.1	373.7	171*	391.7	394.5	286 (FUT.)	399.9	402.7
124	369.5	374.1	172*	392.2	395.0	287 (FUT.)	399.1	401.9
125*	369.9	373.2	173*	393.3	396.1	288 (FUT.)	398.1	400.9
126*	369.2	372.5	174*	393.9	396.7	289 (FUT.)	397.4	400.2
127*	368.6	371.9	175*	395.2	398.0	290 (FUT.)	396.0	398.8
128*	367.4	370.7	176*	395.6	398.4	291 (FUT.)	395.7	398.5
129	363.9	368.3	177*	396.6	399.4	292 (FUT.)	394.6	397.4
130	364.1	368.5	178*	396.9	399.7	293 (FUT.)	394.2	397.0
131*	364.6	367.8	179*	398.0	400.8	294 (FUT.)	393.1	395.9
132	364.9	369.3	180*	398.6	401.4	295 (FUT.)	376.0	380.4
133	365.7	370.1	181*	402.2	405.4	296 (FUT.)	375.1	379.5
134*	368.4	371.6	182	399.5	403.9	297 (FUT.)	374.8	379.2
135*	371.0	374.2	183	398.6	403.0	298 (FUT.)	373.9	378.3
136	371.6	376.0	184	395.4	399.8	299 (FUT.)	373.5	377.9
137	373.9	378.3	185	394.6	399.0	300 (FUT.)	372.8	377.2
138*	374.4	377.6	186	391.4	395.8	301 (FUT.)	372.7	377.1
139*	380.7	383.9	187	390.5	394.9	302 (FUT.)	370.9	375.3
140*	381.5	384.7	188	387.6	392.0	303 (FUT.)	370.2	374.6
141*	381.8	385.0	189*	370.0	373.2	304 (FUT.)	368.9	373.3
142*	382.6	385.8	190*	369.4	372.6	305 (FUT.)	368.8	373.2
143*	382.9	386.1	191*	368.6	371.8	306 (FUT.)	368.0	372.4
144*	383.7	386.9	192*	367.6	370.8	307 (FUT.)	367.6	372.0
145*	384.0	387.2	193*	366.0	369.2	308 (FUT.)	367.0	371.4
146*	384.6	387.8	194*	364.2	367.3	309 (FUT.)	366.7	371.1
147*	383.4	386.6	195*	362.7	365.8	310 (FUT.)	365.9	370.3
148*	380.5	383.7	196*	361.9	365.0	329 (FUT.)	359.5	NO SERVICE TO CELLARS
149*	379.7	382.9	197*	361.0	364.1	330 (FUT.)	358.5	NO SERVICE TO CELLARS
150*	376.6	379.8	198*	362.9	366.1	331 (FUT.)	358.9	NO SERVICE TO CELLARS
151*	375.8	379.0	199	367.1	371.5	332 (FUT.)	358.3	NO SERVICE TO CELLARS
152*	372.8	376.0	200	367.3	371.7	354 (FUT.)	365.9	370.3
153*	372.0	375.2	201	368.1	372.5	355 (FUT.)	365.1	369.5
154*	370.1	373.3	202	368.3	372.7	356 (FUT.)	364.4	368.8
155*	384.4	387.6	203	369.0	373.4	357 (FUT.)	364.3	368.7
156*	383.6	386.8	204	369.9	374.3	358 (FUT.)	363.0	366.2

*-DENOTES SHC'S WHICH NEED TO BE RUN AT 1.0%. ALL OTHER SHC'S TO BE RUN AT 2.0%



NOTE: SEWER MANHOLES LOCATIONS HAVE BEEN PROJECTED ONTO THE WATER MAIN. THEREFORE, THE DISTANCES BETWEEN STRUCTURES SHOWN ON THE PROFILES MAY BE DISTORTED. THE NUMERICAL VALUES WERE TAKEN FROM THE PLAN VIEW AND WERE USED TO GENERATE THE SLOPES BETWEEN STRUCTURES. WHERE THERE IS A DISCREPANCY, THE NUMERICAL VALUE IS TO BE HELD. THE CONTRACTOR IS TO VERIFY LENGTHS SHOWN IN THE PROFILE WITH THE PLAN VIEW.

DEPARTMENT OF PUBLIC WORKS
HOWARD COUNTY, MARYLAND

Melinda A. Duvall
CHIEF, BUREAU OF UTILITIES

DEPARTMENT OF PLANNING AND ZONING
HOWARD COUNTY, MARYLAND

[Signature]
CHIEF, DEVELOPMENT ENGINEERING DIVISION

GLW GUTSCHICK LITTLE & WEBER, P.A.
CIVIL ENGINEERS, LAND SURVEYORS, LAND PLANNERS, LANDSCAPE ARCHITECTS
3609 NATIONAL DRIVE - SUITE 250 - BURTONTOWN OFFICE PARK
BURTONTOWN, MARYLAND 20866
TEL: 301-421-4024 FAX: 301-889-1820 DC/VA: 301-889-2524 FAX: 301-421-4186



DES: DEV	DEV	REPLACEMENT MYLAR TO REFLECT AS-BUILT	01/09/07
DRN: TL/DV		BY GLW - SUPERCEDES MYLAR SIGNED 09/06	
CHK: DEV			
DATE: 08/06	BY: NO	REVISION	DATE

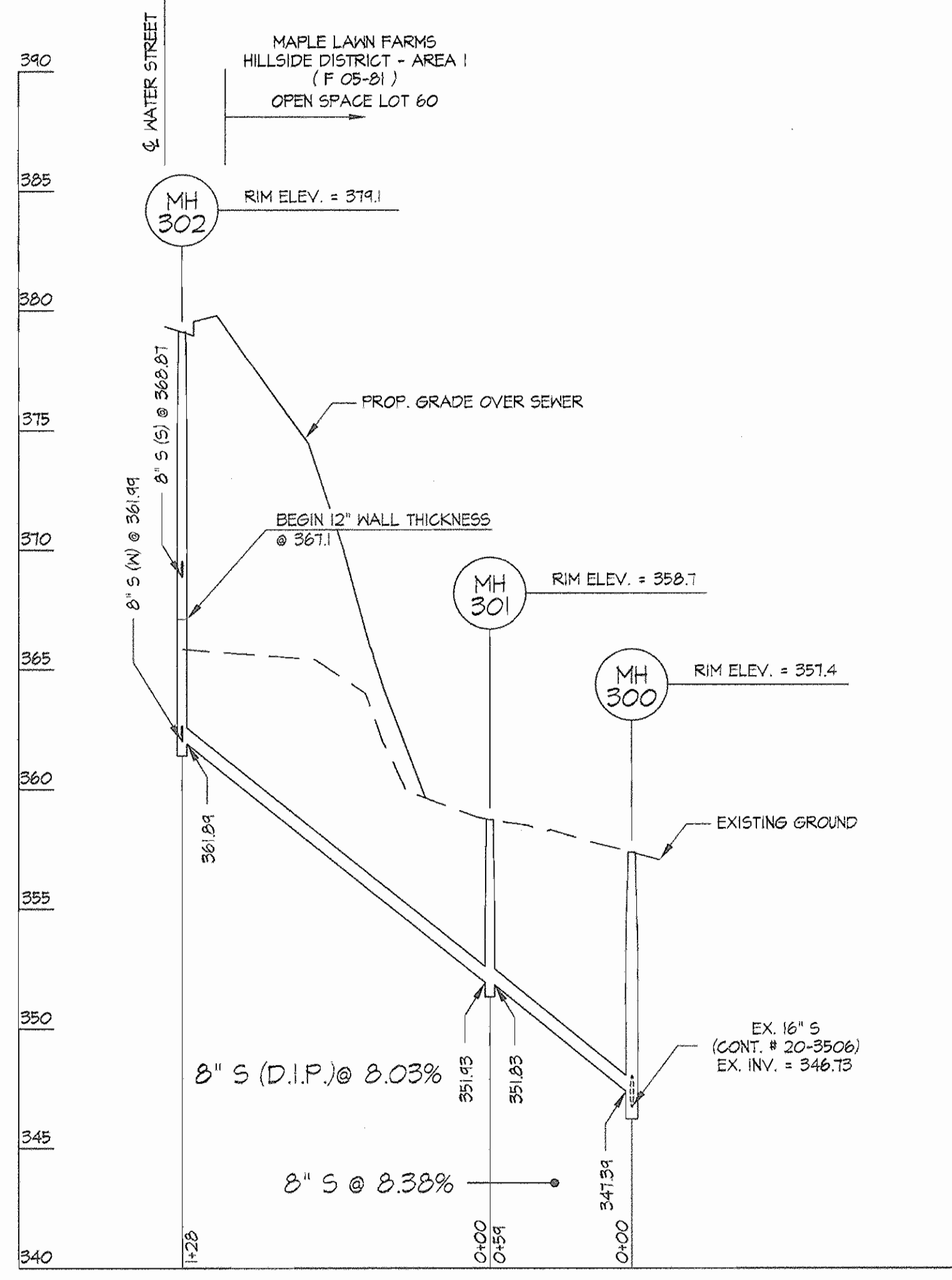
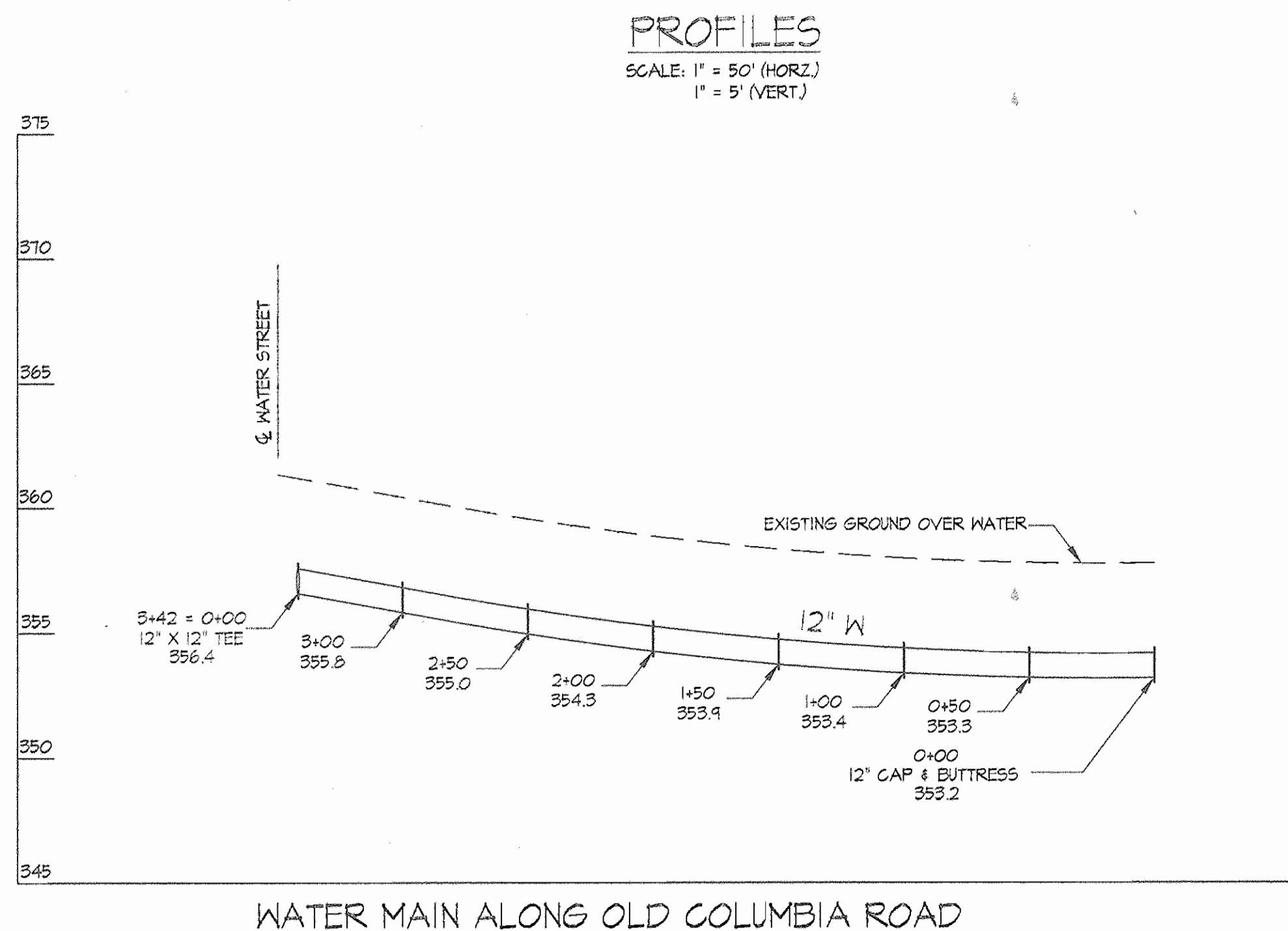
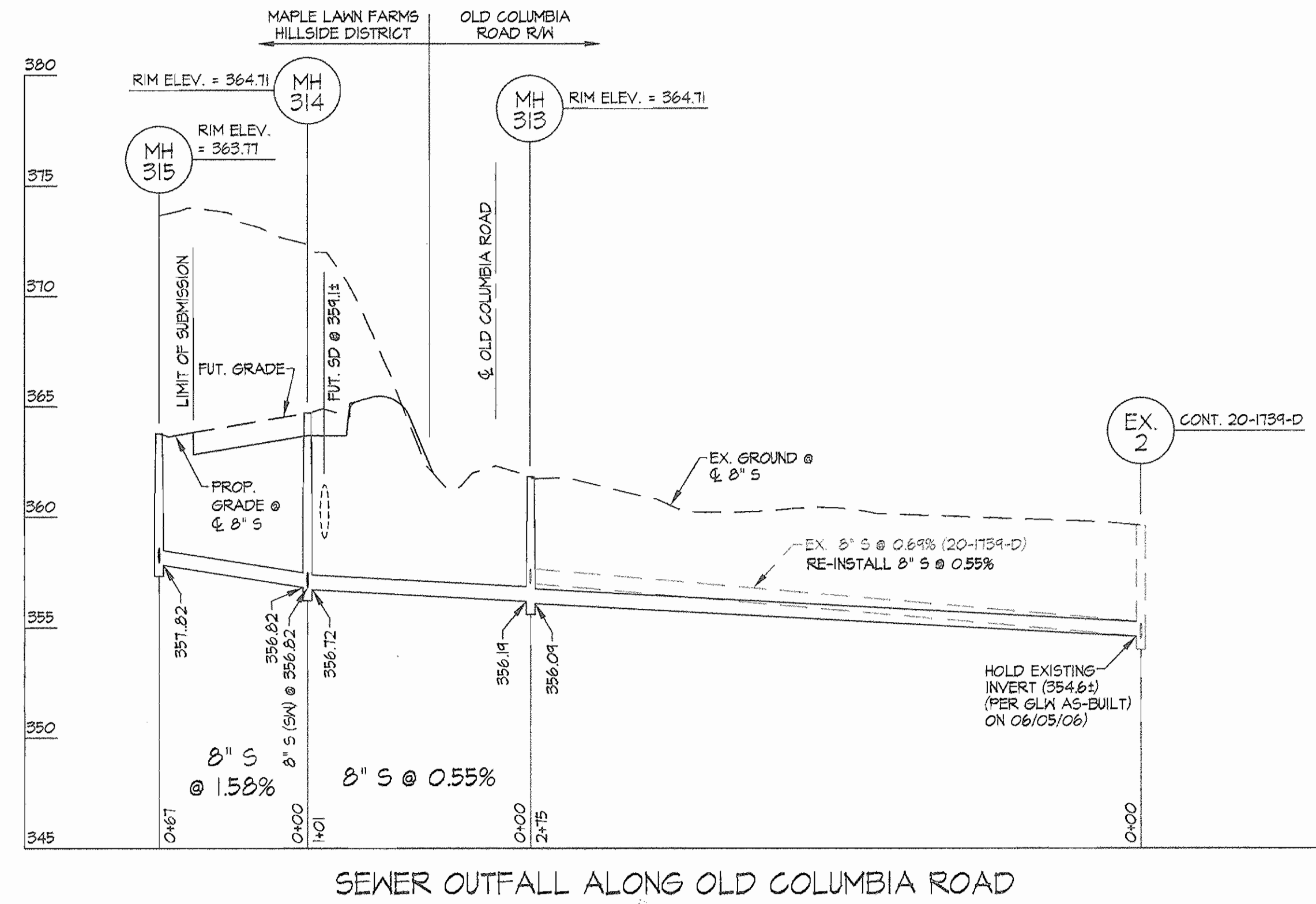
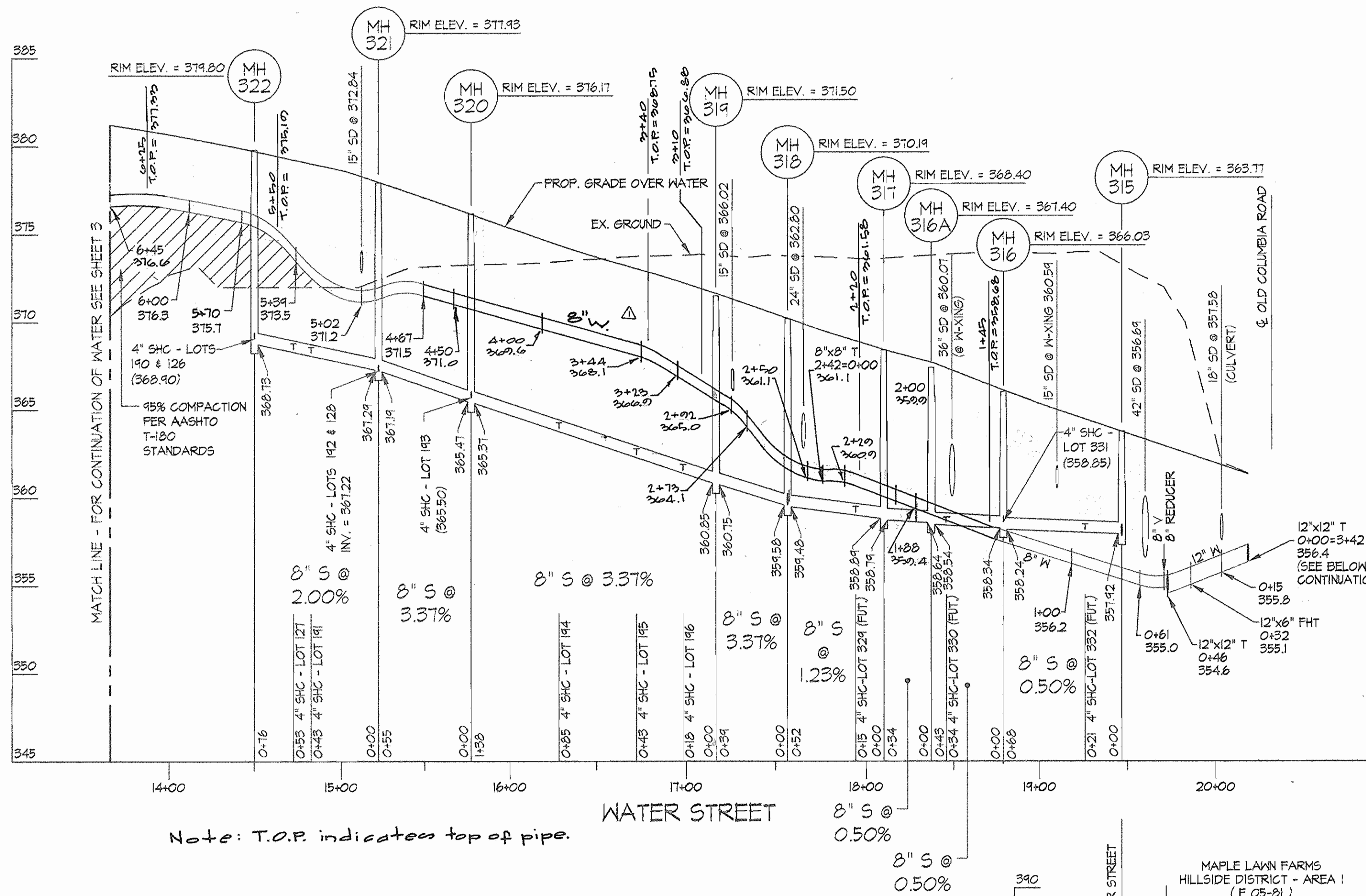
WATER and SEWER EXTENSION PROFILE

60' SCALE MAP NO. 46 BLOCK NO. 4

MAPLE LAWN FARMS
CONTRACT No. 24-4328-D
HILLSIDE DISTRICT - AREA 3
LOTS 109 THROUGH 212, OPEN SPACE LOT 213 THROUGH 218,
AND COMMON OPEN AREAS 219 THROUGH 221
HOWARD COUNTY, MARYLAND
ELECTION DISTRICT No. 5

SCALE AS SHOWN

SHEET 3 OF 7

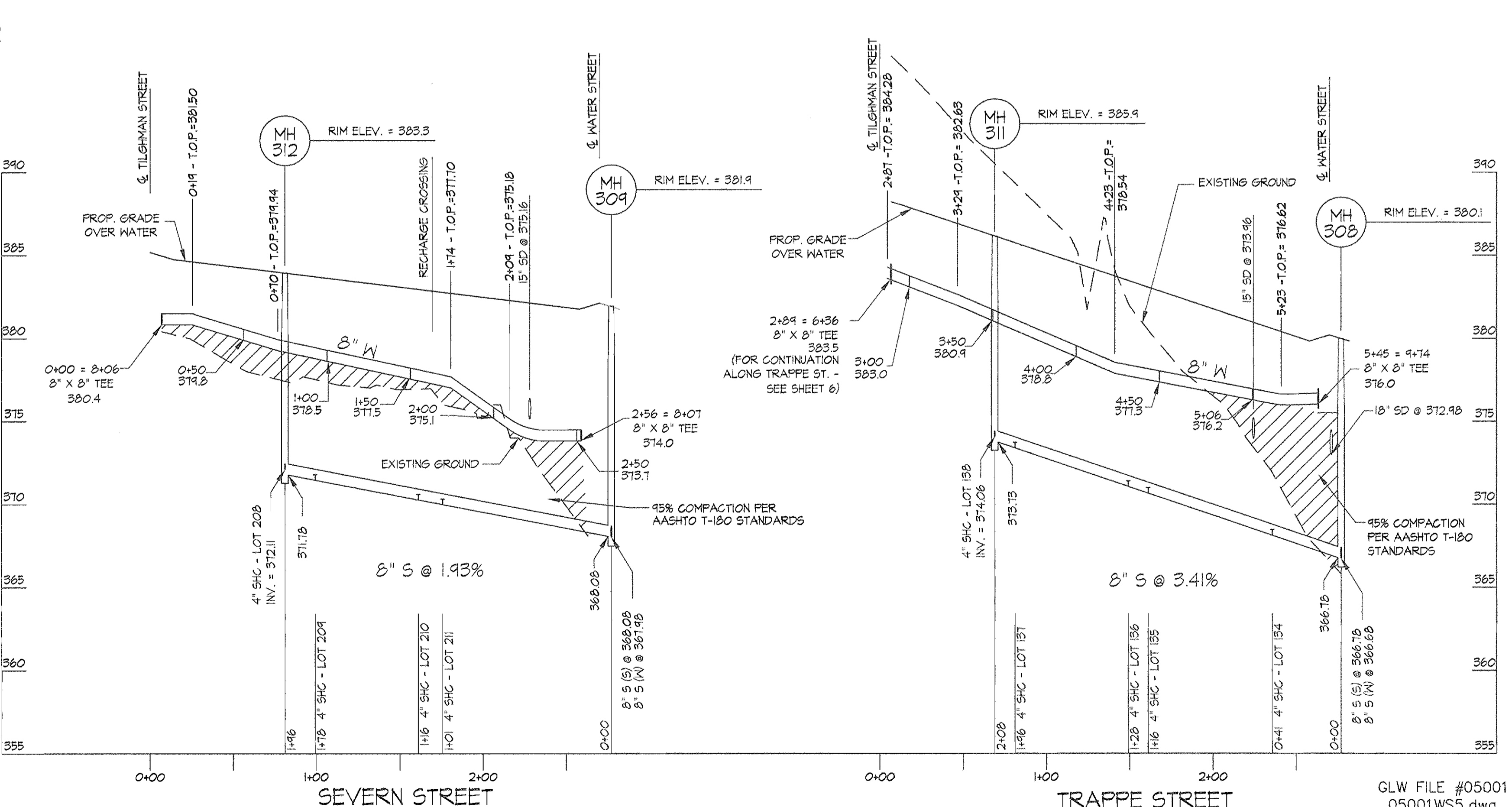
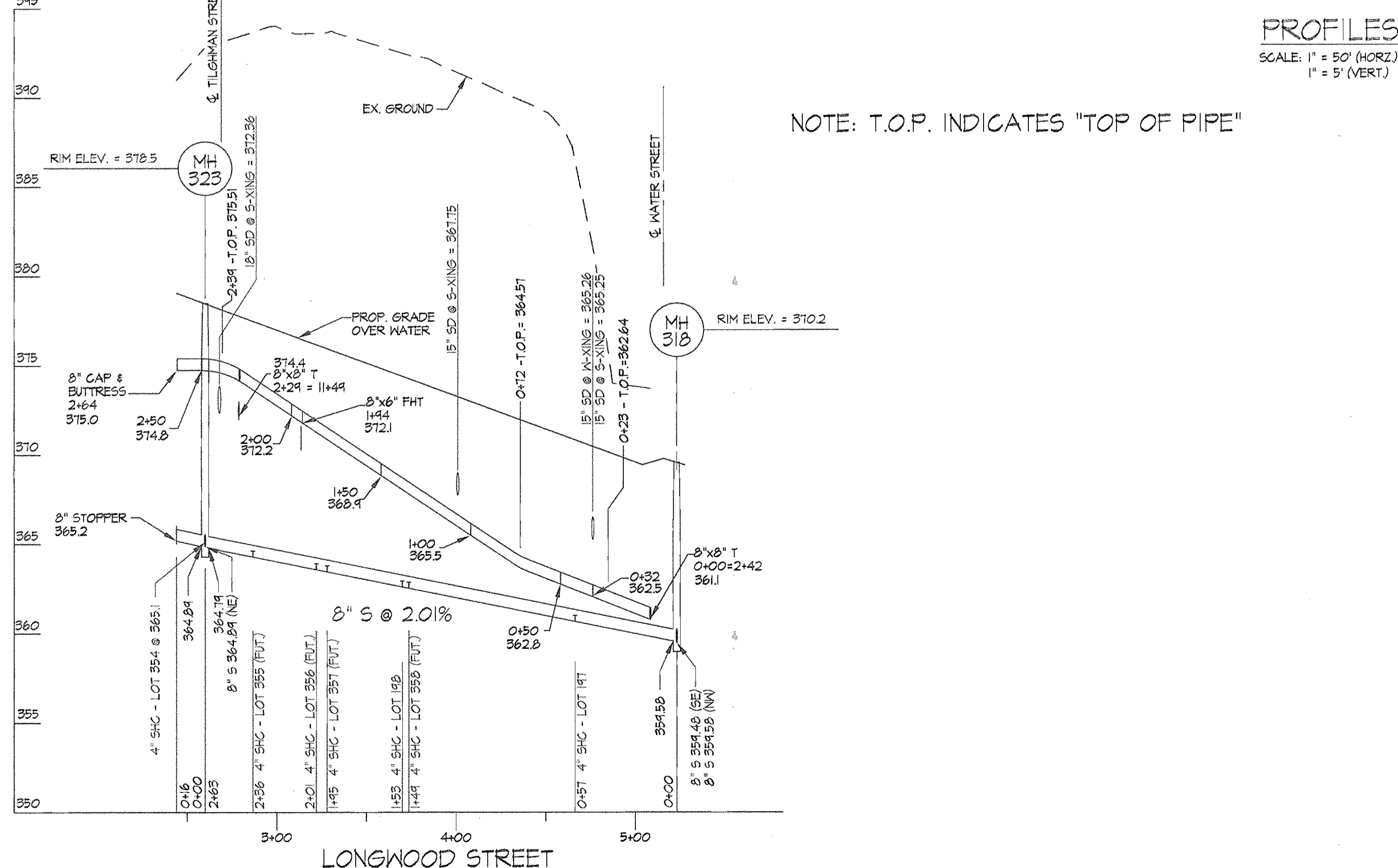
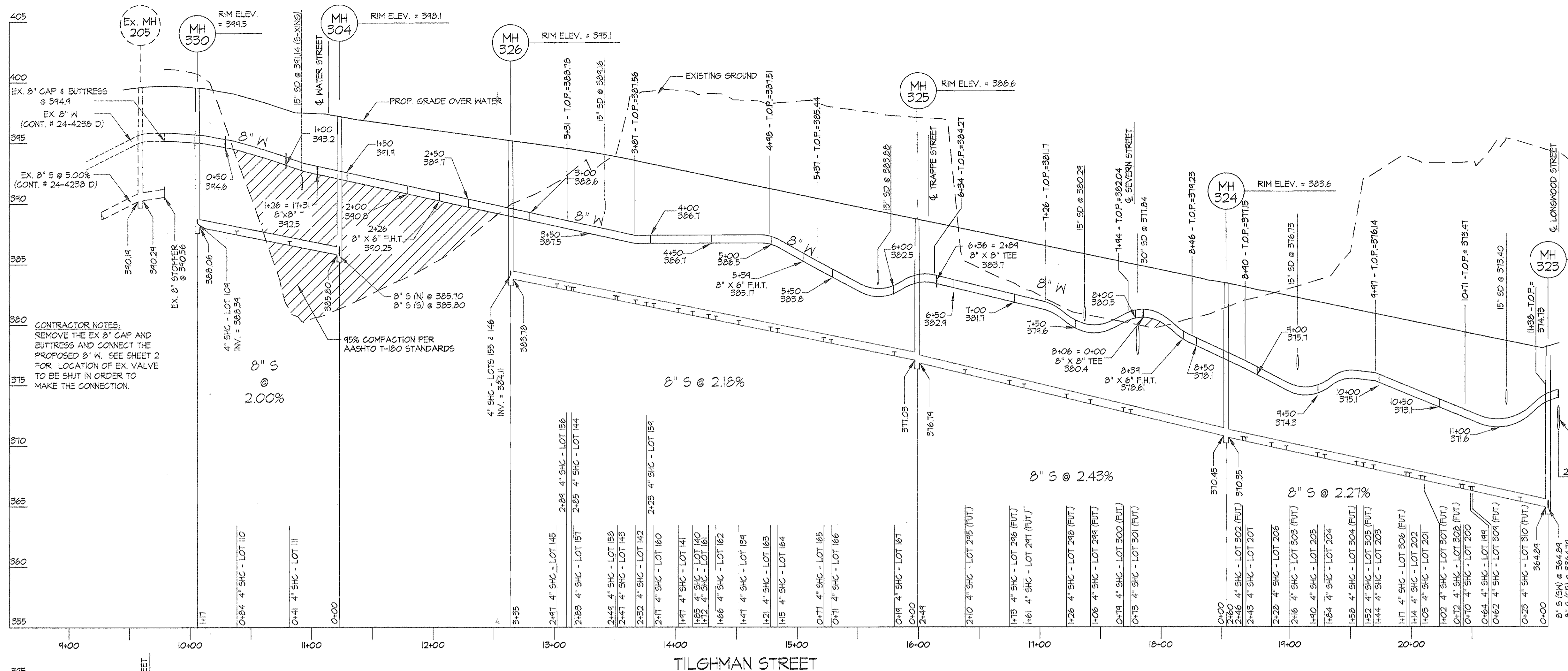


NOTE: SEWER MANHOLES AND ROAD CENTERLINE STATION LOCATIONS HAVE BEEN PROJECTED ONTO THE WATER MAIN. THEREFORE, THE DISTANCES BETWEEN STRUCTURES SHOWN ON THE PROFILES MAY BE DISTORTED. THE NUMERICAL VALUES WERE TAKEN FROM THE PLAN VIEW AND WERE USED TO GENERATE THE SLOPES BETWEEN STRUCTURES. WHERE THERE IS A DISCREPANCY, THE NUMERICAL VALUE IS TO BE HELD. THE CONTRACTOR IS TO VERIFY LENGTHS SHOWN IN THE PROFILE WITH THE PLAN VIEW.

SEWER MAIN THROUGH OPEN SPACE LOT 60

GLW FILE #05001
05001WS4.dwg

<p>DEPARTMENT OF PUBLIC WORKS HOWARD COUNTY, MARYLAND</p> <p><i>Ruth Berman</i> 9-6-06 CHIEF, BUREAU OF UTILITIES DATE</p>	<p>DEPARTMENT OF PLANNING AND ZONING HOWARD COUNTY, MARYLAND</p> <p><i>Michael...</i> 9/6/06 CHIEF, DEVELOPMENT ENGINEERING DIVISION DATE</p>	<p>GLWGUTSCHICK LITTLE & WEBER, P.A. CIVIL ENGINEERS, LAND SURVEYORS, LAND PLANNERS, LANDSCAPE ARCHITECTS 3809 NATIONAL DRIVE - SUITE 250 - BURTONSVILLE OFFICE PARK BURTONSVILLE, MARYLAND 20866 TEL: 301-421-4024 BALT: 410-880-1820 DC/VA: 301-989-2524 FAX: 301-421-4188</p>		<p>DES: DEV DRN: TL/DV CHK: DEV DATE: 08/06</p> <p>BY NO REVISION DATE</p> <p>rev per as-built info. (done by GLW) 7/7/07</p>	<p>WATER and SEWER EXTENSION PROFILE</p> <p>600' SCALE MAP NO. 46 BLOCK NO. 4</p>	<p>MAPLE LAWN FARMS CONTRACT No. 24-4328-D HILLSIDE DISTRICT - AREA 3 LOTS 109 THROUGH 212, OPEN SPACE LOT 213 THROUGH 218, AND COMMON OPEN AREAS 219 THROUGH 221 HOWARD COUNTY, MARYLAND ELECTION DISTRICT No. 5</p>	<p>SCALE AS SHOWN SHEET 4 OF 7</p>
--	---	---	--	---	---	--	--



DEPARTMENT OF PUBLIC WORKS
HOWARD COUNTY, MARYLAND

Michael J. Devanville
CHIEF, BUREAU OF UTILITIES

DEPARTMENT OF PLANNING AND ZONING
HOWARD COUNTY, MARYLAND

DATE

GLWGUTSCHICK LITTLE & WEBER, P.A.
CIVIL ENGINEERS, LAND SURVEYORS, LAND PLANNERS, LANDSCAPE ARCHITECTS
3909 NATIONAL DRIVE - SUITE 250 - BURTNSVILLE OFFICE PARK
BURTNSVILLE, MARYLAND 20868
TEL: 301-421-4024 BAL: 410-880-1820 DC/VA: 301-989-2524 FAX: 301-421-4188



DES: DEV	DEV	REPLACEMENT MYLAR TO REFLECT AS-BUILT	01/01/01
DRN: TLDV		BY GLW - SUPERCEDES MYLAR SIGNED 04/06	
CHK: DEV			
DATE: 08/06	BY: NO	REVISION	DATE

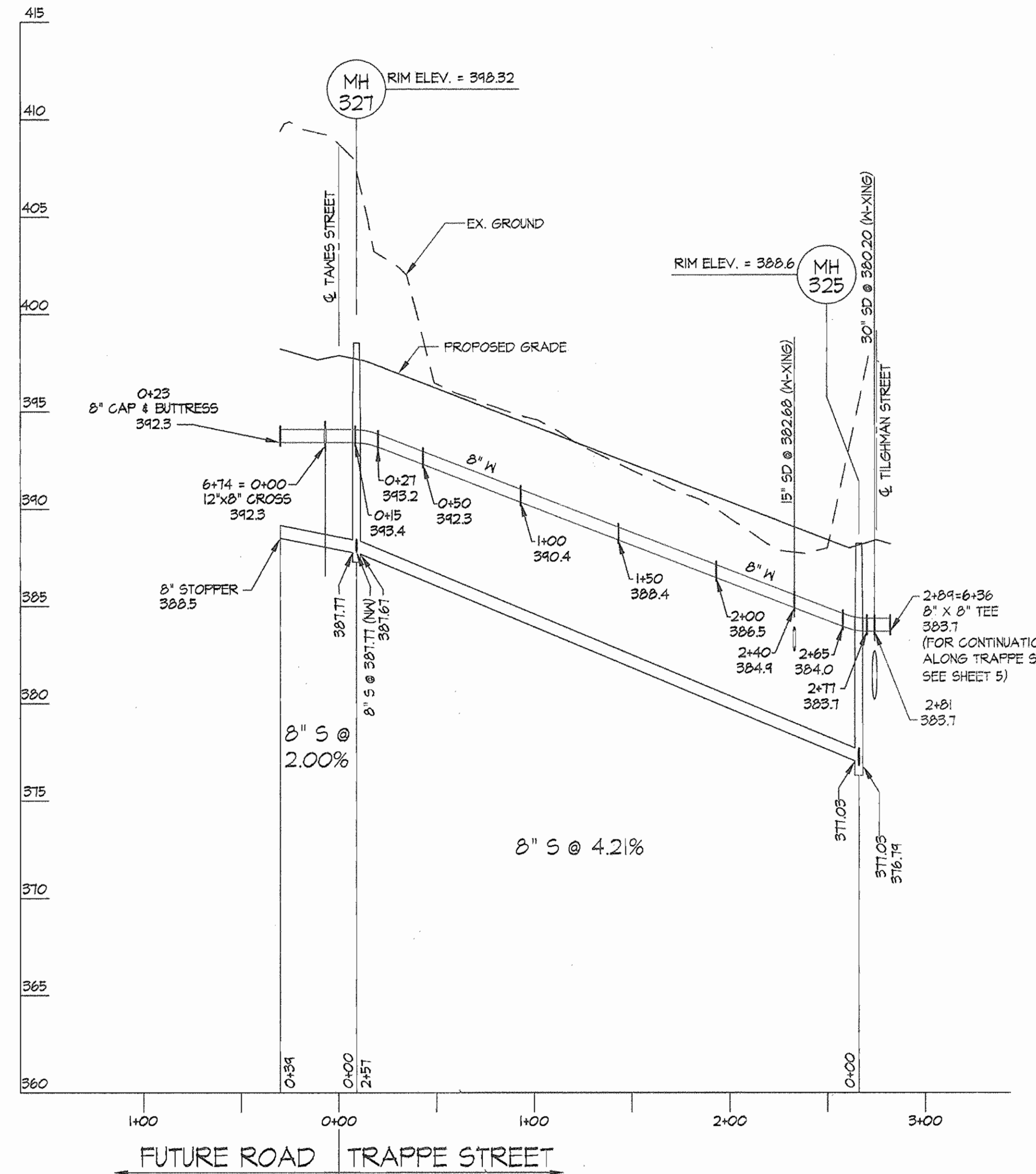
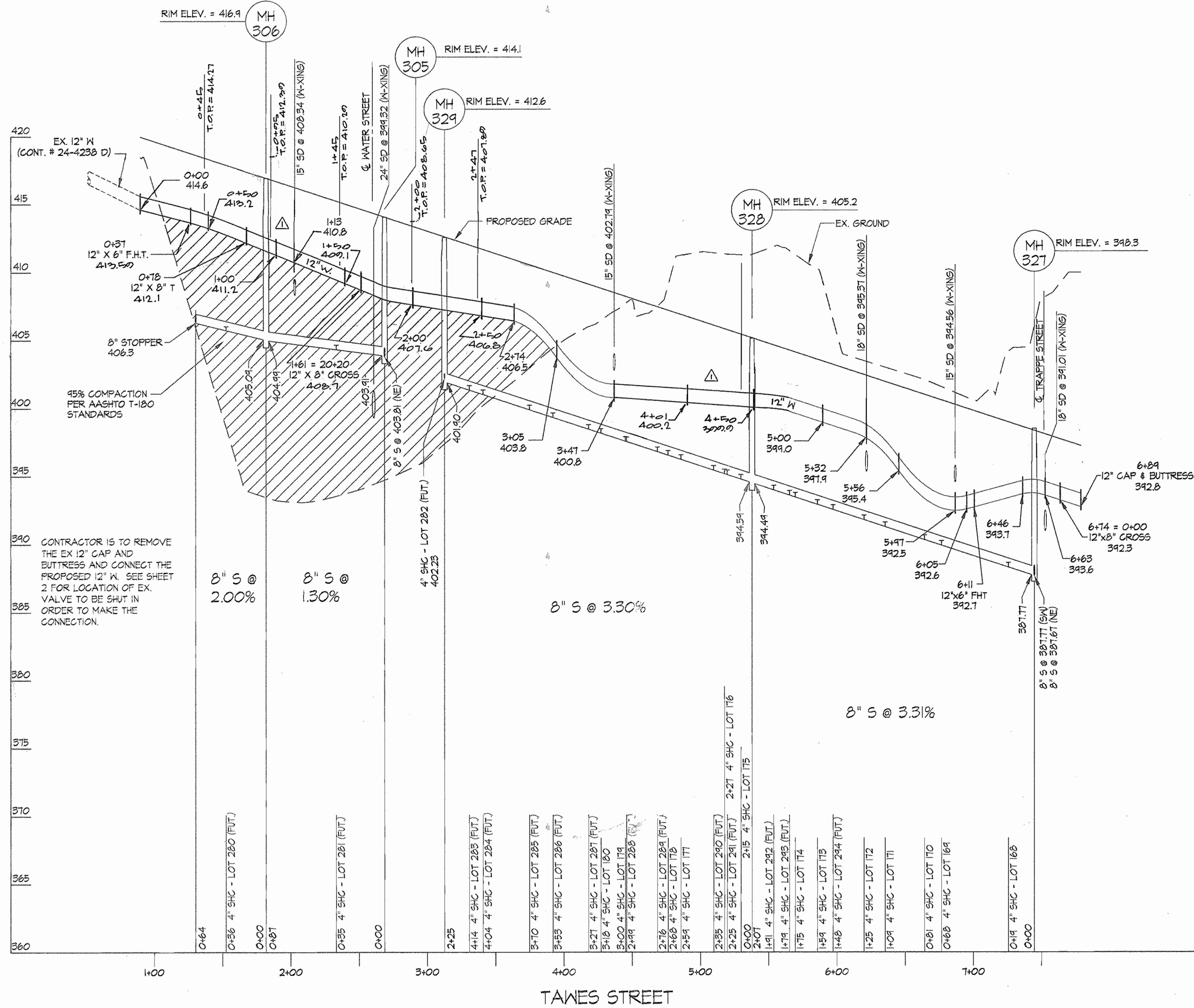
WATER and SEWER EXTENSION
PROFILE

600' SCALE MAP NO. 46 BLOCK NO. 4

MAPLE LAWN FARMS
CONTRACT No. 24-4328-D
HILLSIDE DISTRICT - AREA 3
LOTS 109 THROUGH 212, OPEN SPACE LOT 213 THROUGH 218,
AND COMMON OPEN AREAS 219 THROUGH 221
HOWARD COUNTY, MARYLAND
ELECTION DISTRICT No. 5

SCALE AS SHOWN
SHEET 5 OF 7

GLW FILE #05001
05001WS5.dwg



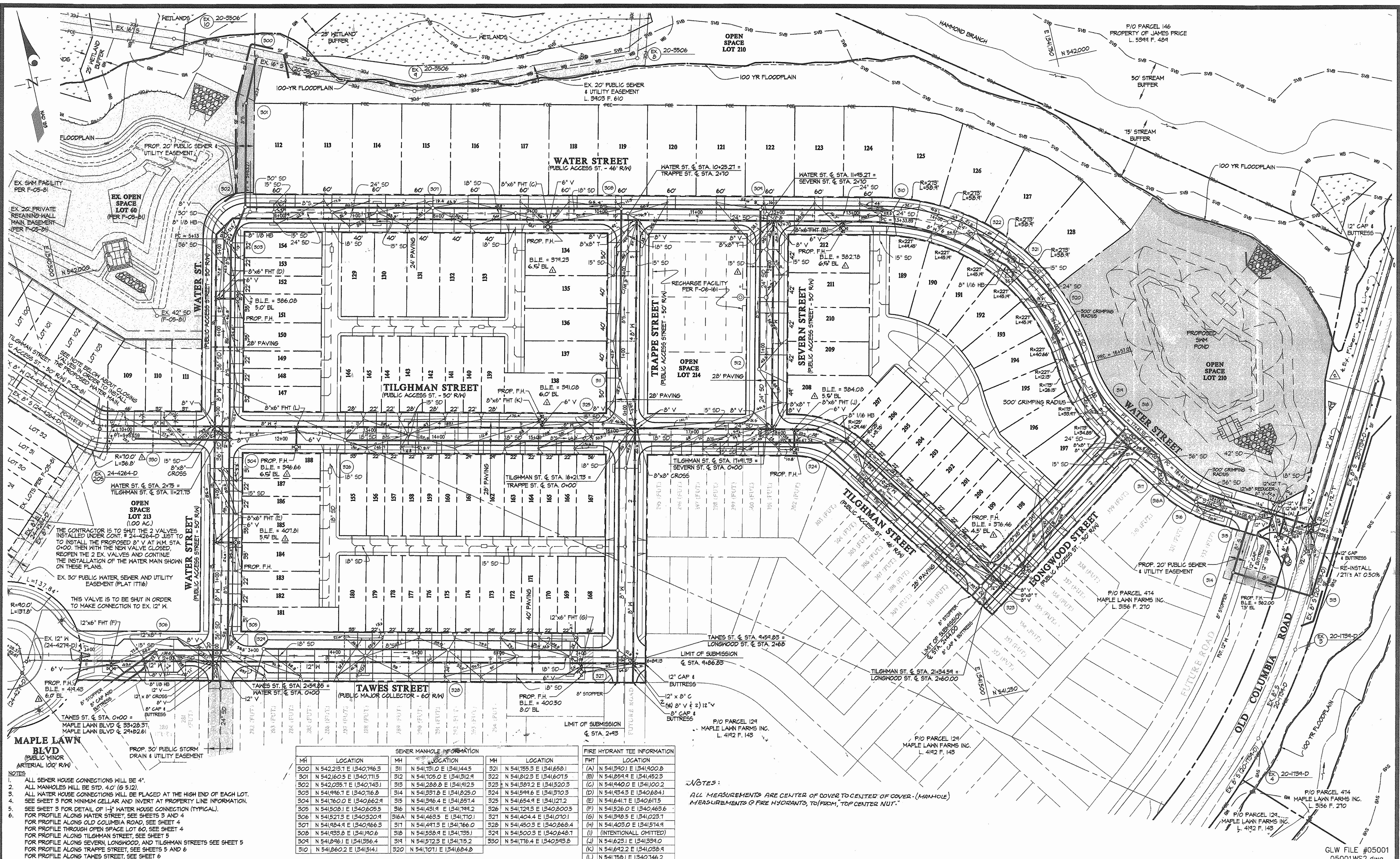
NOTE: SEWER MANHOLES LOCATIONS HAVE BEEN PROJECTED ONTO THE WATER MAIN. THEREFORE, THE DISTANCES BETWEEN STRUCTURES SHOWN ON THE PROFILES MAY BE DISTORTED. THE NUMERICAL VALUES WERE TAKEN FROM THE PLAN VIEW AND WERE USED TO GENERATE THE SLOPES BETWEEN STRUCTURES. WHERE THERE IS A DISCREPANCY, THE NUMERICAL VALUE IS TO BE HELD. THE CONTRACTOR IS TO VERIFY LENGTHS SHOWN IN THE PROFILE WITH THE PLAN VIEW.

Note: T.O.P. indicates top of pipe.

PROFILES
SCALE: 1" = 50' (HORIZ)
1" = 5' (VERT)

GLW FILE #05001
05001WS6.dwg

DEPARTMENT OF PUBLIC WORKS HOWARD COUNTY, MARYLAND <i>R. J. ...</i> CHIEF, BUREAU OF UTILITIES	DEPARTMENT OF PLANNING AND ZONING HOWARD COUNTY, MARYLAND <i>M. ...</i> CHIEF, DEVELOPMENT ENGINEERING DIVISION	GLW GUTSCHICK LITTLE & WEBER, P.A. CIVIL ENGINEERS, LAND SURVEYORS, LAND PLANNERS, LANDSCAPE ARCHITECTS 3909 NATIONAL DRIVE - SUITE 250 - BURTONSVILLE OFFICE PARK BURTONSVILLE, MARYLAND 20866 TEL: 301-421-4024 FAX: 410-880-1820 DC/VA: 301-989-2524 FAX: 301-421-4186		DES: DEV				WATER and SEWER EXTENSION PROFILE	MAPLE LAWN FARMS CONTRACT No. 24-4328-D HILLSIDE DISTRICT - AREA 3 LOTS 109 THROUGH 212, OPEN SPACE LOT 213 THROUGH 221 AND COMMON OPEN AREAS 219 THROUGH 221 HOWARD COUNTY, MARYLAND ELECTION DISTRICT No. 5	SCALE AS SHOWN
				DRN: TLDY						600' SCALE MAP NO. 46 BLOCK NO. 4
				CHK: DEV						
				DATE: 07/06	BY: NO	REVISION: <i>revisions per GLW as built info.</i>	DATE: 7/7/07			



DEPARTMENT OF PUBLIC WORKS
HOWARD COUNTY, MARYLAND

DEPARTMENT OF PLANNING AND ZONING
HOWARD COUNTY, MARYLAND

Robert J. Simpson 9-6-06
CHIEF, BUREAU OF UTILITIES DATE

William J. Gutschick 9/6/06
CHIEF, DEVELOPMENT ENGINEERING DIVISION DATE

GLW GUTSCHICK LITTLE & WEBER, P.A.
CIVIL ENGINEERS, LAND SURVEYORS, LAND PLANNERS, LANDSCAPE ARCHITECTS
3909 NATIONAL DRIVE - SUITE 250 - BURTNSVILLE OFFICE PARK
BURTNSVILLE, MARYLAND 20866
TEL: 301-421-4024 FAX: 410-880-1820 DC/VA: 301-989-2524 FAX: 301-421-4186

SEWER MANHOLE INFORMATION		FIRE HYDRANT TEE INFORMATION	
MH	LOCATION	MH	LOCATION
300	N 542,193.7 E 1340,746.3	311	N 541,751.0 E 1341,444.5
301	N 542,160.5 E 1340,711.5	312	N 541,705.0 E 1341,312.9
302	N 542,095.7 E 1340,743.1	313	N 541,288.8 E 1341,812.5
303	N 541,996.7 E 1340,716.8	314	N 541,337.8 E 1341,825.0
304	N 541,760.0 E 1340,662.9	315	N 541,396.4 E 1341,857.4
305	N 541,508.1 E 1340,605.5	316	N 541,431.9 E 1341,799.2
306	N 541,527.3 E 1340,520.9	317	N 541,463.5 E 1341,770.1
307	N 541,384.9 E 1340,966.3	318	N 541,447.3 E 1341,766.0
308	N 541,933.8 E 1341,906.6	319	N 541,538.9 E 1341,735.1
309	N 541,246.1 E 1341,936.4	320	N 541,572.3 E 1341,715.2
310	N 541,860.2 E 1341,514.1	321	N 541,404.4 E 1341,070.1
		322	N 541,403.0 E 1341,068.4
		323	N 541,500.3 E 1340,848.7
		324	N 541,716.4 E 1340,593.8
		325	N 541,758.1 E 1340,746.2

DES: DEV

DRN: TL/DV

CHK: DEV

DATE: 09/06

BY	NO	REVISION	DATE
KCI	3	AS-BUILT DATA SHOWN (WATER)	9/19/07
dev		relocated 12" w to avoid fiber opticles	8/10/07
klp		Rev BLE to per water prop. changes, moved PH on Longwood & added W/CA to 20-218-D	7/1/07

WATER "AS-BUILT" EXTENSION PLAN

600' SCALE MAP NO. 46 BLOCK NO. 4

MAPLE LAWN FARMS
CONTRACT No. 24-4328-D
HILLSIDE DISTRICT - AREA 3
LOTS 109 THROUGH 212, OPEN SPACE LOT 213 THROUGH 218,
AND COMMON OPEN AREAS 219 THROUGH 221
HOWARD COUNTY, MARYLAND
ELECTION DISTRICT No. 5

SCALE 1"=50'

SHEET 7 OF 7

GLW FILE #05001
05001WS2.dwg