

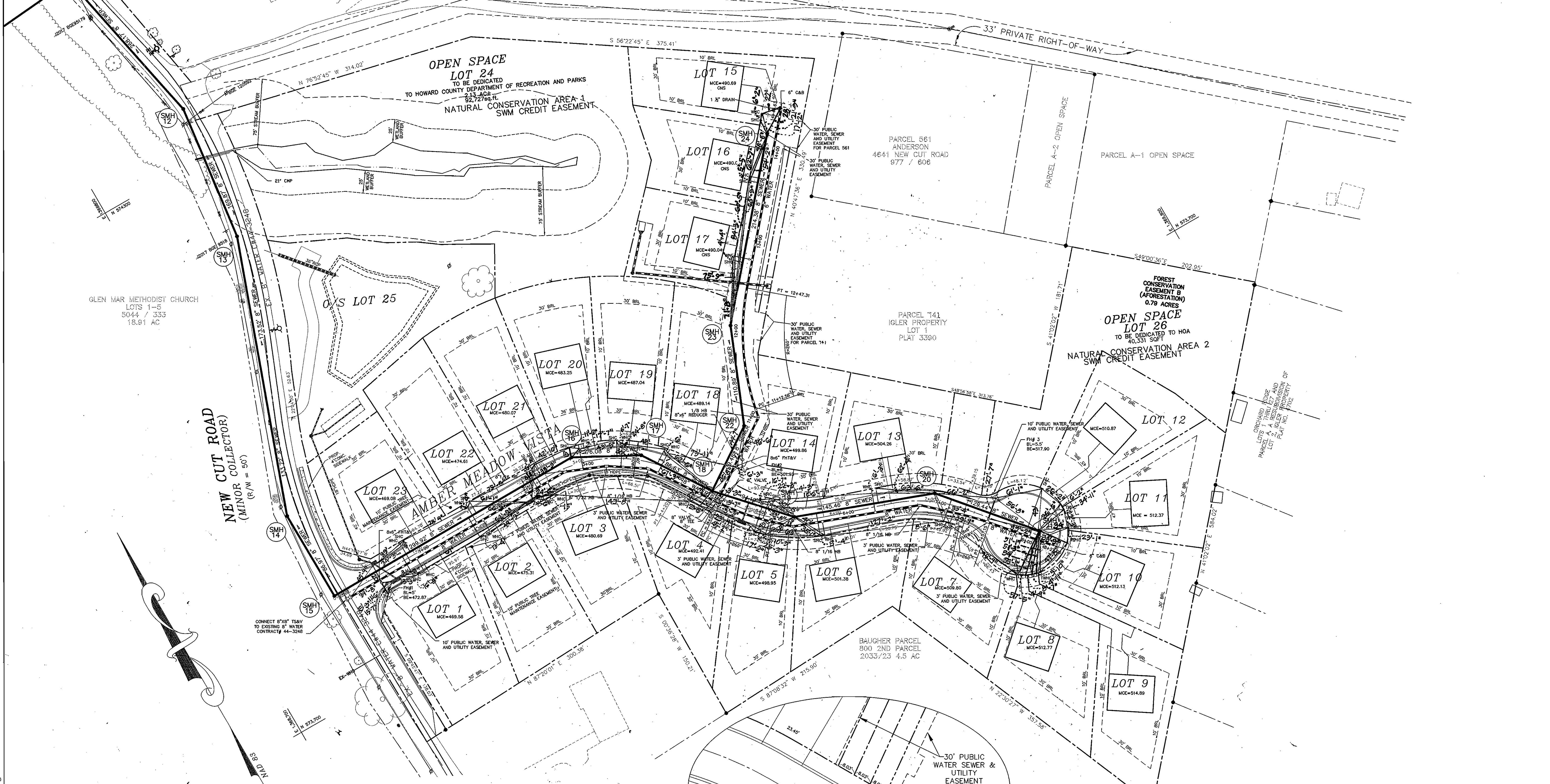


MATCHLINE  
A  
SHEET 3

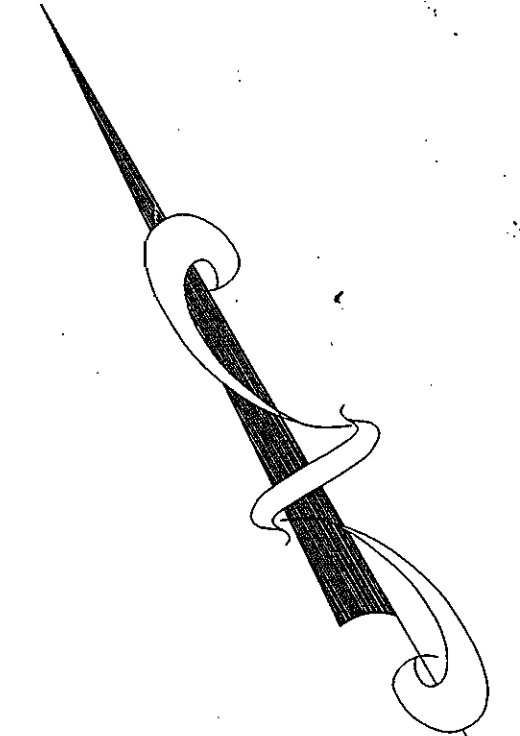
WILLIAM C. FILBERT & HIS WIFE  
279 / 502  
7.23 AC

CURTIS AND VIRGINIA SYKES  
2162 / 310  
7 AC

SUSQUEHANNA TRANSMISSION COMPANY  
141/1



NEW CUT ROAD  
(MINOR COLLECTOR)  
(R/W = 50')



**OWNER & DEVELOPER**  
AMBER MEADOW LLC  
6820 ELM STREET, SUITE 200  
MCLEAN, VA 22101

FRONTAGE DETAIL  
SCALE: 1" = 20'

DEPARTMENT OF PUBLIC WORKS  
HOWARD COUNTY, MARYLAND  
CHIEF, BUREAU OF UTILITIES

DEPARTMENT OF PLANNING & ZONING  
HOWARD COUNTY, MARYLAND  
CHIEF, DEVELOPMENT ENGINEERING DIVISION

**MILDENBERG,  
BOENDER & ASSOC., INC.**  
Engineers Planners Surveyors  
5072 Dorsey Hall Drive, Suite 202, Elkocott City, Maryland 21042  
(410) 997-0296 Ball. (410) 997-0298 Fax.



engineering RDB					
illustration RDB					
approval RJH					
project 03-050					
date SEP 2007					
BY NO.					
REVISION					
DATE					

**PUBLIC WATER  
&  
SEWER PLAN**

**AMBER MEADOW**  
LOTS 1-23 AND  
O.S. LOTS 24-26  
CONTRACT NO.: 14-4327-D  
FIRST ELECTION DISTRICT  
HOWARD COUNTY, MARYLAND

scale  
1"=50'  
2 OF 8

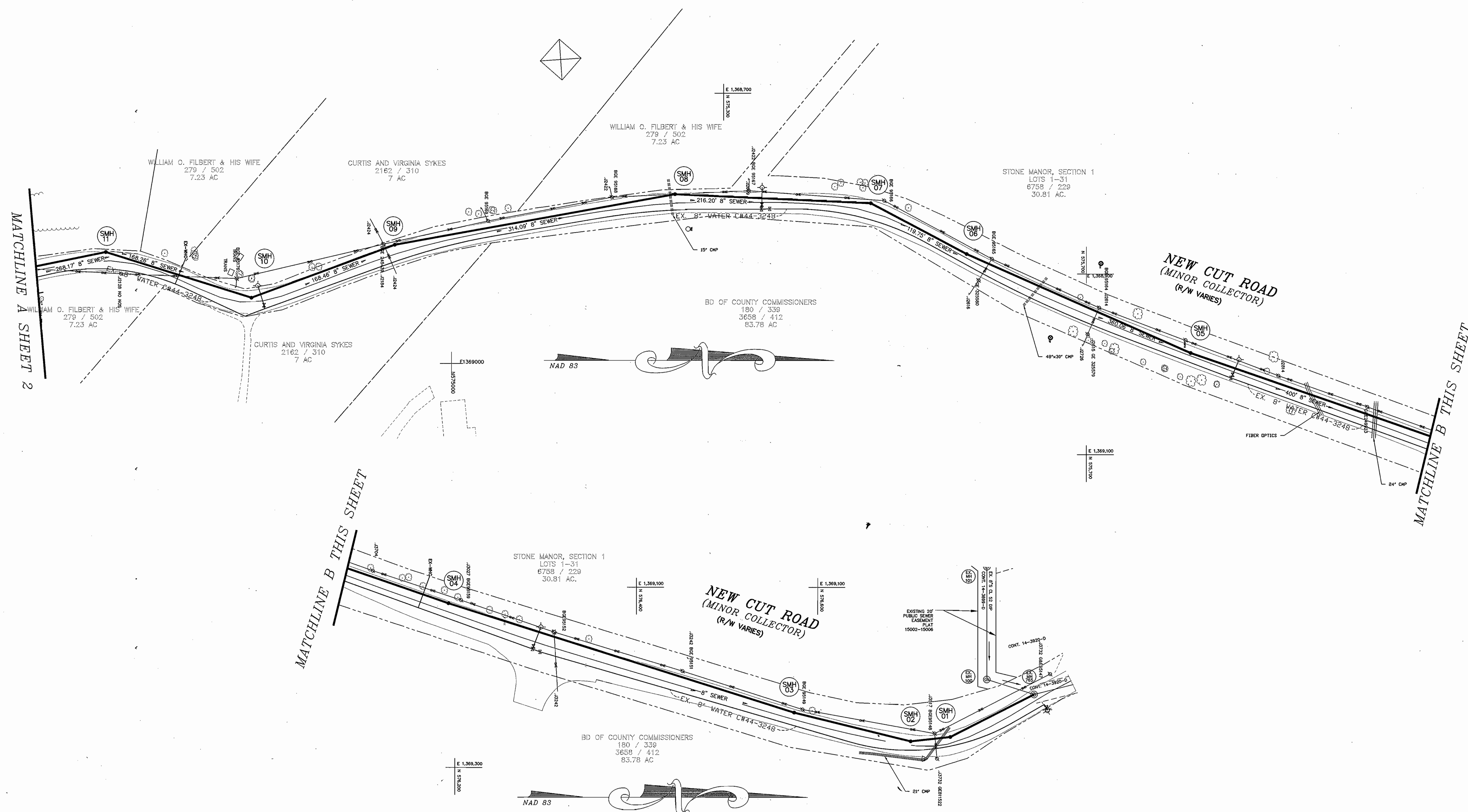
P:\2007\03-050\dwg\water-sewer.dwg

P:\2007\03-050\dwg\water-sewer.dwg

MATCHLINE A SHEET 2

MATCHLINE B THIS SHEET

MATCHLINE B THIS SHEET



**OWNER & DEVELOPER**  
 AMBER MEADOW LLC  
 6820 ELM STREET, SUITE 200  
 MCLEAN, VA 22101

DEPARTMENT OF PUBLIC WORKS  
 HOWARD COUNTY, MARYLAND  
 Michael A. Surinello  
 CHIEF, BUREAU OF UTILITIES

DEPARTMENT OF PLANNING & ZONING  
 HOWARD COUNTY, MARYLAND  
 [Signature]  
 CHIEF, DEVELOPMENT ENGINEERING DIVISION

**MILDENBERG, BOENDER & ASSOC., INC.**  
 Engineers Planners Surveyors  
 5072 Dorsey Hall Drive, Suite 202, Ellicott City, Maryland 21042  
 (410) 997-0298 Ball. (410) 997-0298 Fax.



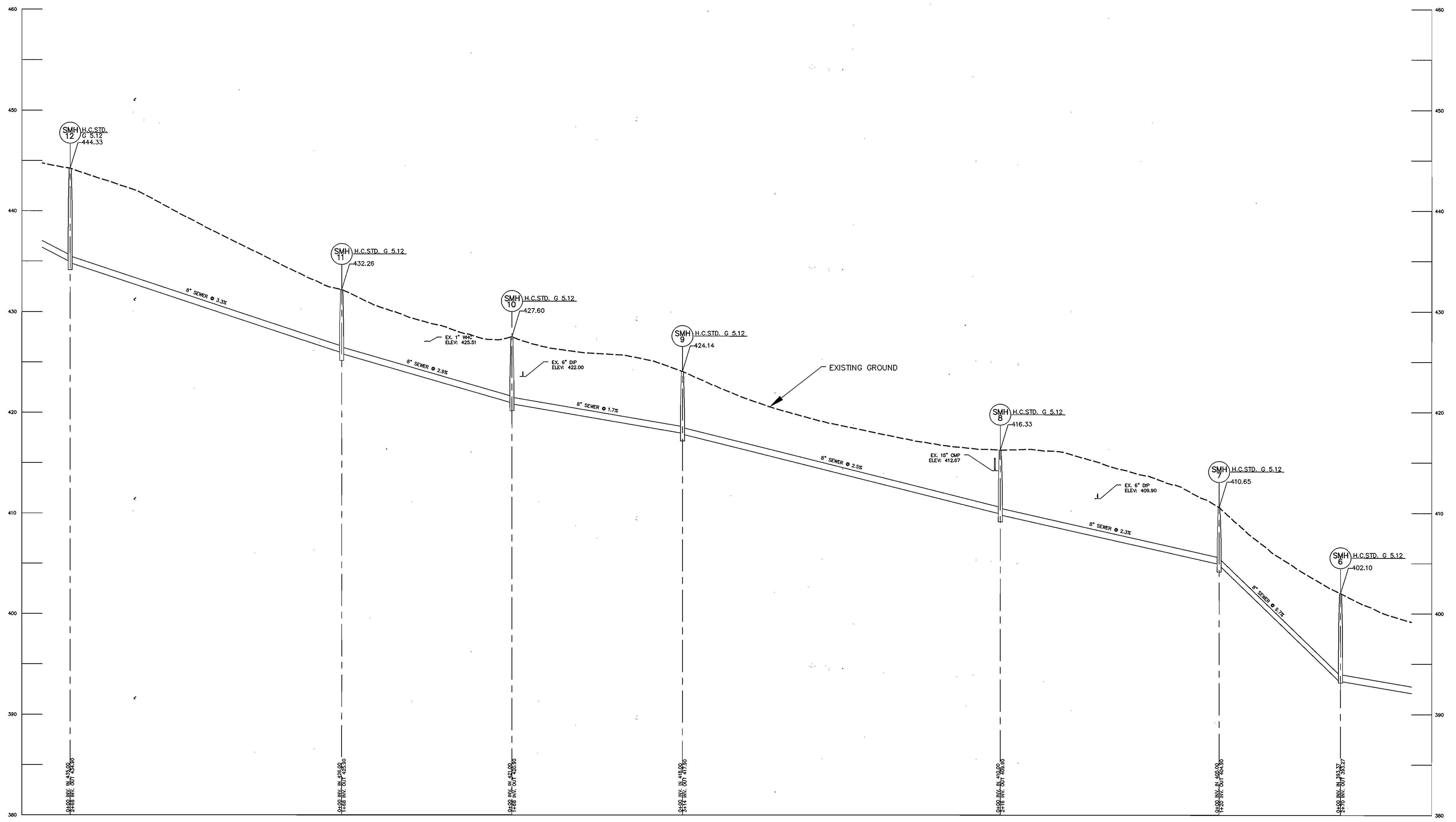
engineering	RDB				
illustration	RDB				
approval	RJH				
project	03-050	ABD	1	REVISED TO SHOW CORRECT OPEN SPACE LOT NUMBERS	12/1/07
date	SEP 2007	BY	NO.	REVISION	DATE

**PUBLIC WATER & SEWER PLAN**  
 600' SCALE MAP NO. 31 BLOCK NO. 8

**AMBER MEADOW**  
 O.S. LOTS 1-23 AND  
 O.S. LOTS 24-26  
 CONTRACT NO.: 14-4327-D  
 FIRST ELECTION DISTRICT  
 HOWARD COUNTY, MARYLAND

scale  
 1"=50'  
**3 OF 8**





**8" NEW CUT RD SEWER PROFILE**

SCALE HORZ 1"=50'  
VERT 1"=5'

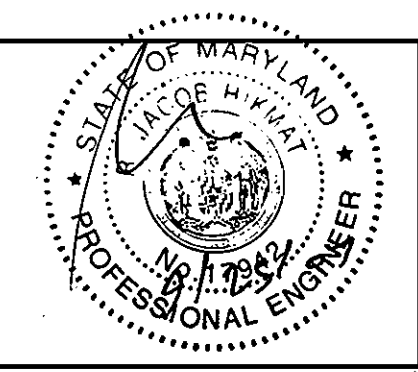
**OWNER & DEVELOPER**  
AMBER MEADOW LLC  
6820 ELM STREET, SUITE 200  
MCLEAN, VA 22101

P:\2007\03-050\dwg\water-sewer.dwg

DEPARTMENT OF PUBLIC WORKS  
HOWARD COUNTY, MARYLAND  
Michael A. Swainville 10/26/07  
CHIEF, BUREAU OF UTILITIES DATE

DEPARTMENT OF PLANNING & ZONING  
HOWARD COUNTY, MARYLAND  
M. P. ... 10/26/07  
CHIEF, DEVELOPMENT ENGINEERING DIVISION DATE

**MILDENBERG, BOENDER & ASSOC., INC.**  
Engineers Planners Surveyors  
5072 Dorsey Hall Drive, Suite 202, Ellicott City, Maryland 21042  
(410) 997-0296 Balt. (410) 997-0298 Puz.

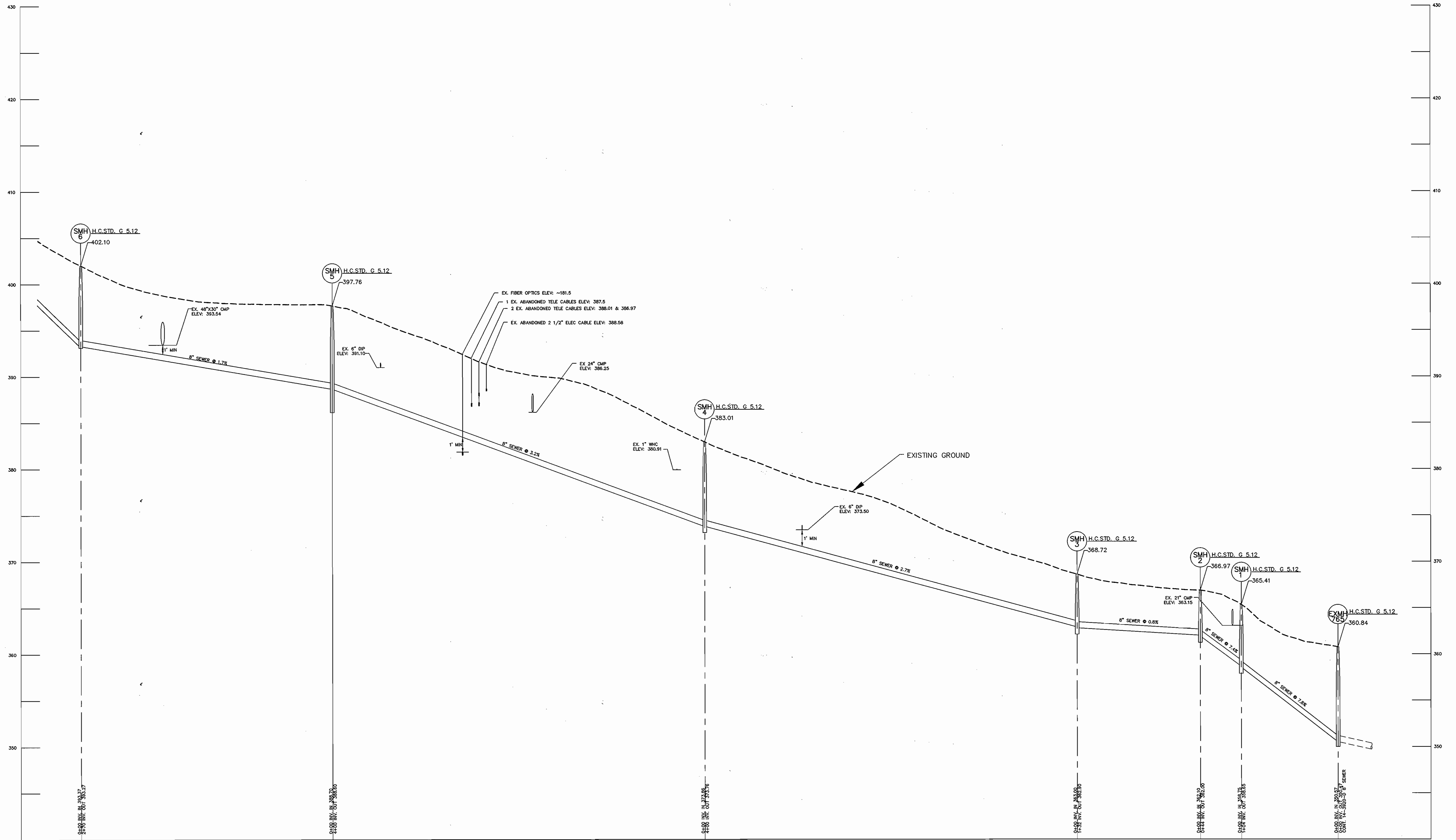


engineering RDB					
illustration RDB					
approval RJH					
project 03-050	DATE	BY	NO.	REVISION	DATE
date SEP 2007				REVISED TO SHOW CORRECT OPEN SPACE LOT NUMBERS	

**NEW CUT RD  
8"  
SEWER PROFILE**  
600' SCALE MAP NO. 31 BLOCK NO. 8

**AMBER MEADOW  
LOTS 1-23 AND  
O.S. LOTS 24-26**  
CONTRACT NO.: 14-4327-D  
0  
HOWARD COUNTY, MARYLAND

scale AS SHOWN  
5 OF 8



**8" NEW CUT RD SEWER PROFILE**

SCALE HORZ 1"=50'  
VERT 1"=5'

**OWNER & DEVELOPER**  
AMBER MEADOW LLC  
6820 ELM STREET, SUITE 200  
MCLEAN, VA 22101

P:\2007\03-050\dwg\water-sewer.dwg

DEPARTMENT OF PUBLIC WORKS  
HOWARD COUNTY, MARYLAND  
*[Signature]*  
CHIEF, BUREAU OF UTILITIES

DEPARTMENT OF PLANNING & ZONING  
HOWARD COUNTY, MARYLAND  
*[Signature]*  
CHIEF, DEVELOPMENT ENGINEERING DIVISION

**MILDENBERG, BOENDER & ASSOC., INC.**  
Engineers Planners Surveyors  
5072 Dorsey Hall Drive, Suite 202, Ellicott City, Maryland 21042  
(410) 997-0296 Ball. (410) 997-0298 Fax.

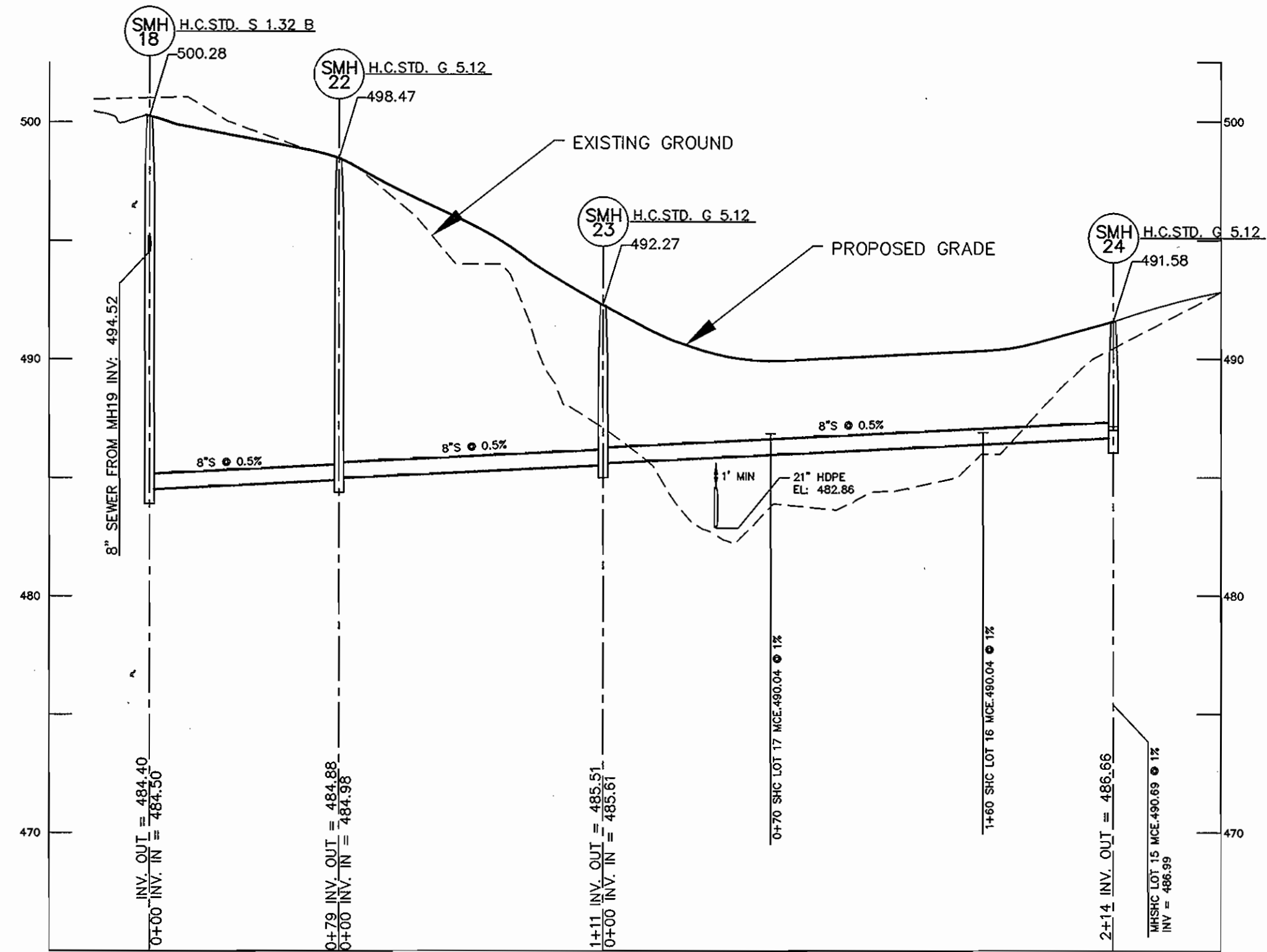


engineering	RDB				
illustration	EDB				
approval	RJH				
project	03-050	REV	1	REVISED TO SHOW CORRECT OPEN SPACE LOT NUMBERS	10/16/07
date	SEP 2007	BY	NO.	REVISION	DATE

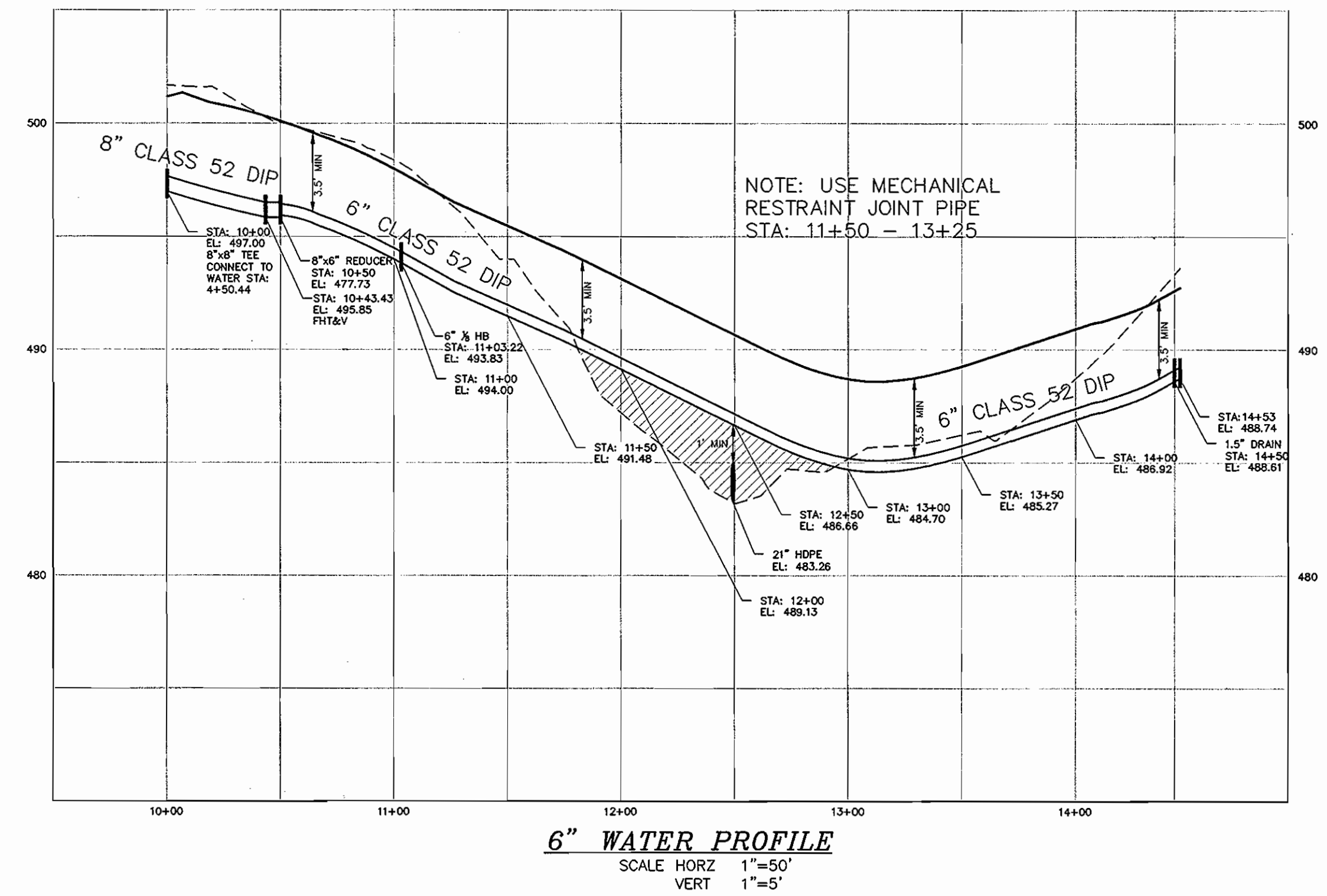
**NEW CUT RD  
8"  
SEWER PROFILE**

**AMBER MEADOW  
LOTS 1-23 AND  
O.S. LOTS 24-26**  
CONTRACT NO.: 14-4327-D  
FIRST ELECTION DISTRICT  
HOWARD COUNTY, MARYLAND

scale  
AS SHOWN  
**6 OF 8**



**8" SEWER PROFILE**  
SCALE HORZ 1"=50'  
VERT 1"=5'



**6" WATER PROFILE**  
SCALE HORZ 1"=50'  
VERT 1"=5'

LOT#	SHC SLOPE %	EL@EASE	MCE
1	2	465.31	469.58
2	2	470.99	475.31
3	2	476.20	480.69
4	5	485.90	492.41
5	1	495.47	498.95
6	2	497.17	501.38
7	2	505.13	509.80
8	2	507.99	512.77
9	2	507.96	514.89
10	2	507.64	512.13
11	2	507.61	512.70
12	1	506.40	510.87
13	1	500.79	504.26
14	2	495.51	499.86
15	1	487.16	490.69
16	1	486.90	490.04
17	1	486.85	490.04
18	2	484.54	488.97
19	2	482.51	487.04
20	1	479.45	483.25
21	1	476.51	480.07
22	1	471.16	474.61
23	1	465.62	469.08

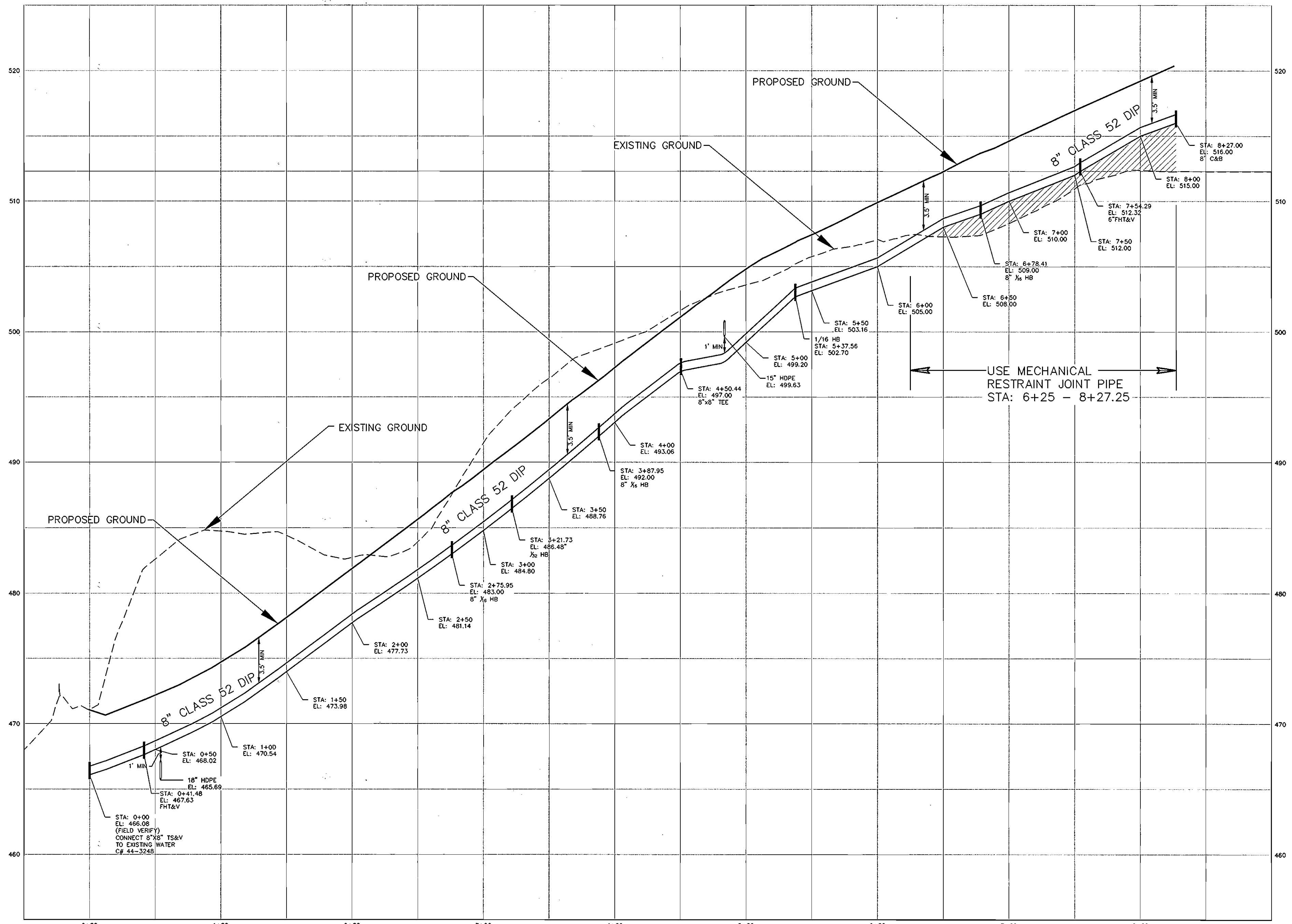
**OWNER & DEVELOPER**  
AMBER MEADOW LLC  
6820 ELM STREET, SUITE 200  
MCLEAN, VA 22101

P:\2007\03-050.dwg \water-sewer.dwg

DEPARTMENT OF PUBLIC WORKS HOWARD COUNTY, MARYLAND [Signature] 10/16/07 CHIEF, BUREAU OF UTILITIES	DEPARTMENT OF PLANNING & ZONING HOWARD COUNTY, MARYLAND [Signature] 10/23/07 CHIEF, DEVELOPMENT ENGINEERING DIVISION		engineering RDB illustration RDB approval RH project 03-050 date SEP 2007	1 REVISOR TO SHOW CORRECT OPEN SPACE LOT NUMBERS 12/1/07	600' SCALE MAP NO. 31 BLOCK NO. 8	<b>8" SEWER &amp; 6" WATER PROFILES</b>	<b>AMBER MEADOW</b> LOTS 1-23 AND O.S. LOTS 24-26 CONTRACT NO.: 14-4327-D FIRST ELECTION DISTRICT HOWARD COUNTY, MARYLAND	scale AS SHOWN 7 OF 8
---	---	--	---	--	--------------------------------------	---	--	--------------------------

SEWER MANHOLE LOCATION CHART		
MANHOLE	LOCATION	
EXISTING	N 576898.5570, E 1369218.2810	
1.	N 576746.2760, E 1369265.5355	
2.	N 576702.4859, E 1369270.4355	
3.	N 576574.0794, E 1369238.9587	
4.	N 576192.7841, E 1369118.0708	
5.	N 575814.7490, E 1368897.3440	
6.	N 575567.9105, E 1368878.0035	
7.	N 575462.2083, E 1368821.7274	
8.	N 574246.2245, E 1368811.9987	
9.	N 574937.2602, E 1368868.5261	
10.	N 574779.3700, E 1368927.2474	
11.	N 574618.8324, E 1368876.8577	
12.	N 574356.1413, E 1368930.7916	
13.	N 574205.9434, E 1368911.5712	
14.	N 573913.2354, E 1368805.2762	
15.	N 573811.6069, E 1368805.9863	
16.	N 573813.7027, E 1369105.8980	
17.	N 573777.6387, E 1369172.8899	
18.	N 573705.1036, E 1369220.2598	
19.	N 573635.5591, E 1369283.7884	
20.	N 573581.5419, E 1369429.2509	
21.	N 573489.4965, E 1369506.9229	
22.	N 573749.4341, E 1369286.2294	
23.	N 573851.9896, E 1369328.3944	
24.	N 574014.2936, E 1369468.4560	

WATER APPURTENCE LOCATION CHART		
LOCATION	APPURTENCE	
N 573801.6774, E 1368816.1124	8"x8" T.S. & V.	
N 573802.0000, E 1368857.6300	8" x 6' FHT&V	
N 573783.8200, E 1368857.8500	F.H.	
N 573803.6043, E 1369091.8569	1/16 H.B.	
N 573786.3822, E 1369134.2706	1/32 H.B.	
N 573761.0228, E 1369172.4402	1/16 H.B.	
N 573692.0617, E 1369218.7807	8"x8" TEE	
N 573627.3975, E 1369277.0409	1/16 H.B.	
N 573578.5041, E 1369408.7054	1/16 H.B.	
N 573525.6009, E 1369463.3515	8"x6" FHT&V	
N 573545.2194, E 1369485.7772	F.H.	
N 573454.5808, E 1369523.3017	8" C&B	
N 573716.2858, E 1369254.8295	8"x6" FHT&V	
N 573709.2440, E 1369259.4087	FH	
N 573720.7859, E 1369261.5262	8"x6" REDUCER	
N 573749.6317, E 1369304.4528	6' 1/8 H.B.	
N 574027.1535, E 1369492.9157	6' C&B	
N 574040.5022, E 1369481.2705	1 1/2" C&B	



8" WATER PROFILE  
SCALE HORZ 1"=50'  
VERT 1"=5'

OWNER & DEVELOPER  
AMBER MEADOW LLC  
6820 ELM STREET, SUITE 200  
MCLEAN, VA 22101

F:\2007\03-050\dwg\water-sewer.dwg

DEPARTMENT OF PUBLIC WORKS  
HOWARD COUNTY, MARYLAND  
10/14/07  
CHIEF, BUREAU OF UTILITIES

DEPARTMENT OF PLANNING & ZONING  
HOWARD COUNTY, MARYLAND  
10/28/07  
CHIEF, DEVELOPMENT ENGINEERING DIVISION

MILDENBERG,  
BOENDER & ASSOC., INC.  
Engineers Planners Surveyors  
5072 Dorsey Hall Drive, Suite 202, Bellicott City, Maryland 21042  
(410) 897-0288 Balt. (410) 897-0288 Paz.



engineering	RDB				
illustration	RDB				
approval	RJH				
project	03-050	RDB	1	REVISED TO SHOW CORRECT OPEN SPACE LOT NUMBERS	12/10/07
date	SEP 2007	BY	NO.	REVISION	DATE

8" WATER PROFILE & LOCATION CHARTS

600' SCALE MAP NO. 31 BLOCK NO. 8

AMBER MEADOW  
LOTS 1-23 AND  
O.S. LOTS 24-26  
CONTRACT NO.: 14-4327-D  
FIRST ELECTION DISTRICT  
HOWARD COUNTY, MARYLAND

scale  
AS SHOWN  
8 OF 8