

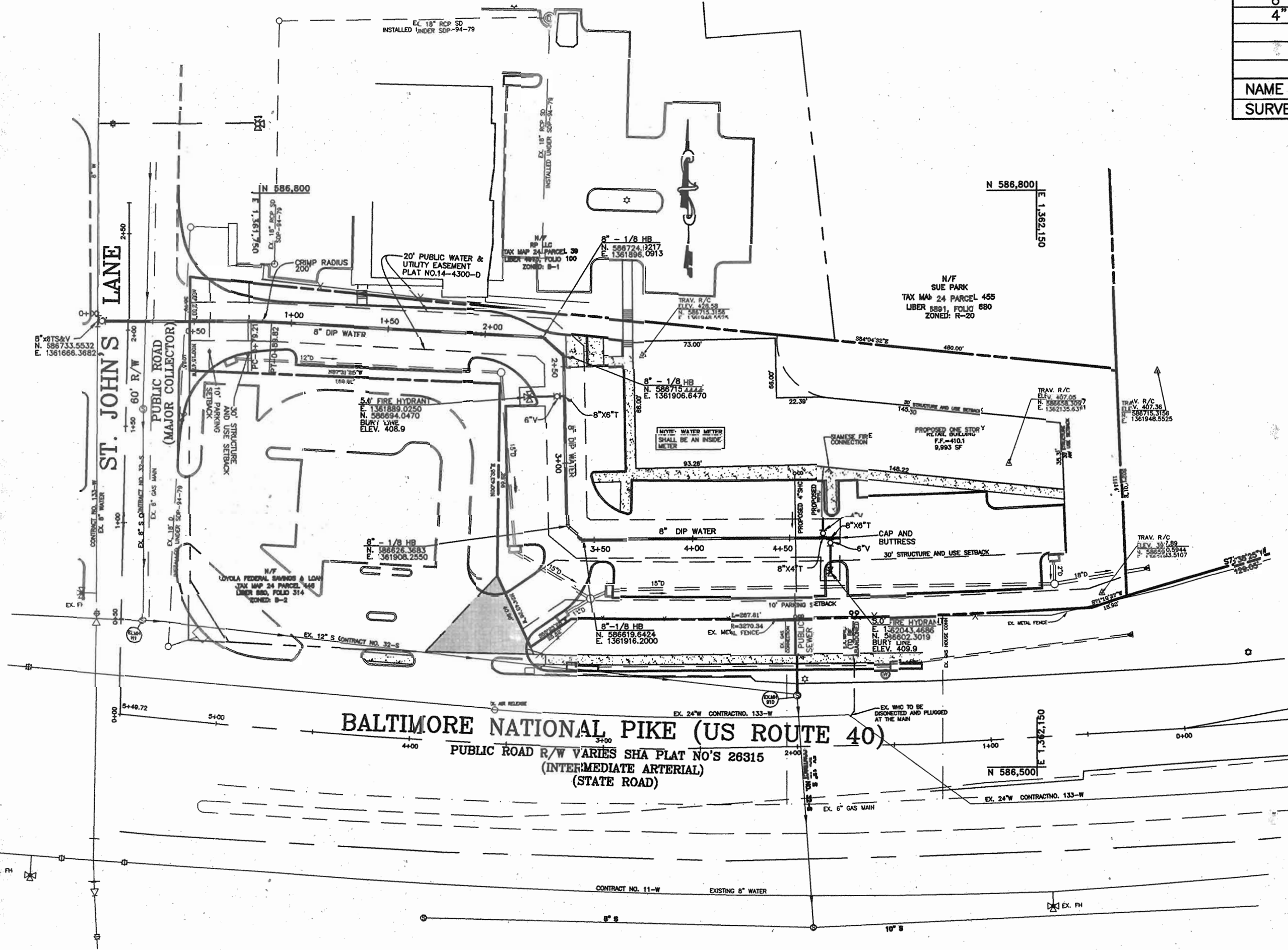
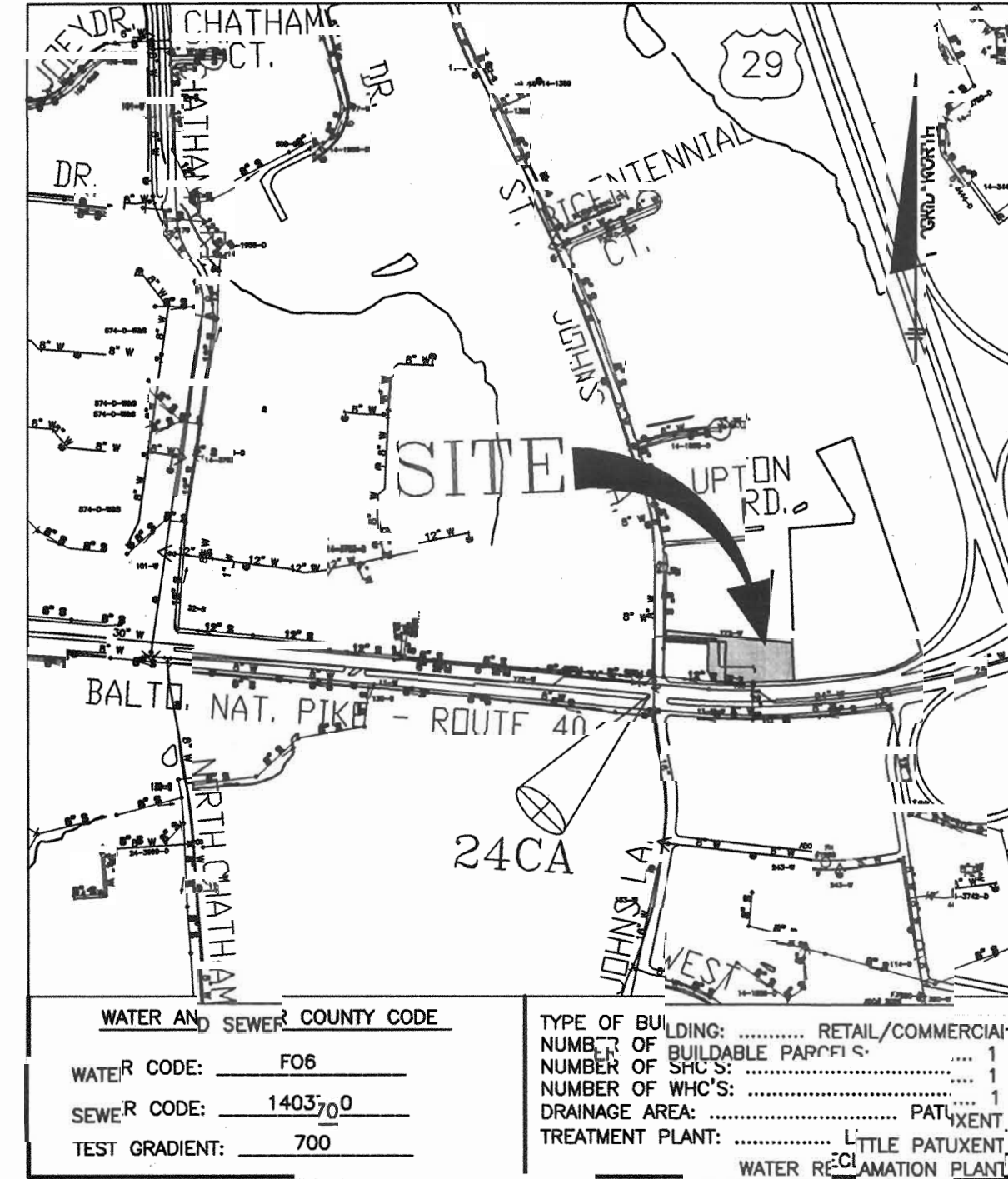
QUANTITIES				
ITEMS	QUANTITIES ESTIMATED	AS-BUILT		
		QUANTITIES	TYPE	MANUF./SUPPLIER
8" D.I.P. WATER MAIN	473 L.F.			
6" D.I.P. WATER MAIN	35 L.F.			
4" D.I.P. WATER MAIN	10 L.F.			
FIRE HYDRANT	2 EA.			
6" WATER VALVE	2 EA.			
4" WATER VALVE	1 EA.			
8"x8" TS&V	1 EA.			
8" HB	4 EA.			
4" SHC	39 L.F.			

NAME OF UTILITY CONTRACTOR:
SURVEY AND DRAFTING DIVISION AS-BUILT DATE:

BENCH MARKS NAD '83

HO. CO. 24BA ELEV. 395.67
 STAMPED DISC ON CONCRETE MONUMENT BEING 23' NORTH OF A TRAFFIC SIGNAL POLE, 5.6' SOUTHWEST OF THE PC OF THE EDGE OF PAVING OF JOHNS HOPKINS ROAD AND 3.3' SOUTH OF THE EDGE OF PAVING OF JOHNS HOPKINS ROAD.
 N 586,783.250 E 1,359,211.698

HO. CO. 24CA ELEV. 398.34
 STAMPED DISC ON CONCRETE MONUMENT BEING 8' EAST OF BGE POLE #555388, 13.3' SOUTH OF LEFT REAR CORNER OF AN INLET AND 2.7' NORTH OF THE EDGE OF PAVING OF HAMMOND PARKWAY.
 N 586,506.183 E 1,361,634.312



PLAN VIEW
SCALE: 1" = 50'

PART I GENERAL NOTES

- APPROXIMATE LOCATION OF EXISTING MAINS ARE SHOWN. THE CONTRACTOR SHALL TAKE ALL NECESSARY PRECAUTIONS TO PROTECT EXISTING MAINS AND SERVICES AND MAINTAIN UNINTERRUPTED SERVICE. ANY DAMAGE INCURRED SHALL BE REPAIRED IMMEDIATELY TO THE SATISFACTION OF THE ENGINEER AT THE CONTRACTOR'S EXPENSE.
- TOPOGRAPHIC FIELD SURVEYS WERE PERFORMED IN MAY 2003 BY FREDERICK WARD ASSOCIATES AND SUPPLEMENTED BY BENCHMARK ENGINEERING, INC IN NOVEMBER 2004.
- HORIZONTAL AND VERTICAL SURVEY CONTROLS:
THE COORDINATES SHOWN ON THE DRAWINGS ARE BASED ON MARYLAND STATE REFERENCE SYSTEM NAD '83/81 AS PROJECTED BY HOWARD COUNTY GEODETIC CONTROL STATIONS No. _____ AND No. _____. ALL VERTICAL CONTROLS ARE BASED ON NAVD '88. VERTICAL CONTROLS PROVIDED ON THE DRAWINGS ARE _____.
- ALL PIPE ELEVATIONS SHOWN ARE INVERT ELEVATIONS UNLESS OTHERWISE NOTED ON THE PLANS.
- CLEAR ALL UTILITIES BY A MINIMUM OF 12 INCHES. CLEAR ALL POLES BY 5'-0" MINIMUM OR TUNNEL AS REQUIRED UNLESS OTHERWISE NOTED. THE CONTRACTOR HAS CONTACTED THE UTILITY COMPANIES AND HAS MADE ARRANGEMENTS FOR BRACING OF POLES AS SHOWN ON THE DRAWINGS. IN THE EVENT THE CONTRACTOR'S WORK REQUIRES THE BRACING OF ADDITIONAL POLES, ANY COST INCURRED BY THE OWNER FOR BRACING OF ADDITIONAL POLES OR DAMAGES SHALL BE DEDUCTED FROM MONIES OWED THE CONTRACTOR. THE CONTRACTOR SHALL COORDINATE WITH THE UTILITY COMPANIES TO SCHEDULE THE BRACING OF THE POLES.
- FOR DETAILS NOT SHOWN ON THE DRAWINGS, AND FOR MATERIALS AND CONSTRUCTION METHODS, USE HOWARD COUNTY DESIGN MANUAL, VOLUME IV, STANDARD SPECIFICATIONS AND DETAILS FOR CONSTRUCTION (LATEST EDITION). THE CONTRACTOR SHALL HAVE A COPY OF VOLUME IV ON THE JOB.
- WHERE TEST PITS HAVE BEEN MADE ON EXISTING UTILITIES, THEY ARE NOTED BY THE SYMBOL [] AT THE LOCATIONS OF THE TEST PITS. A NOTE OR NOTES CONTAINING THE RESULTS OF THE TEST PIT OR PITS IS INCLUDED ON THE DRAWINGS. EXISTING UTILITIES IN THE VICINITY OF THE PROPOSED WORK FOR WHICH TEST PITS HAVE NOT BEEN DUG SHALL BE LOCATED BY THE CONTRACTOR TWO WEEKS IN ADVANCE OF CONSTRUCTION OPERATIONS AT HIS OWN EXPENSE.
- THE CONTRACTOR SHALL NOTIFY THE FOLLOWING UTILITY COMPANIES OR AGENCIES AT LEAST FIVE (5) WORKING DAYS BEFORE STARTING WORK SHOWN ON THESE PLANS:

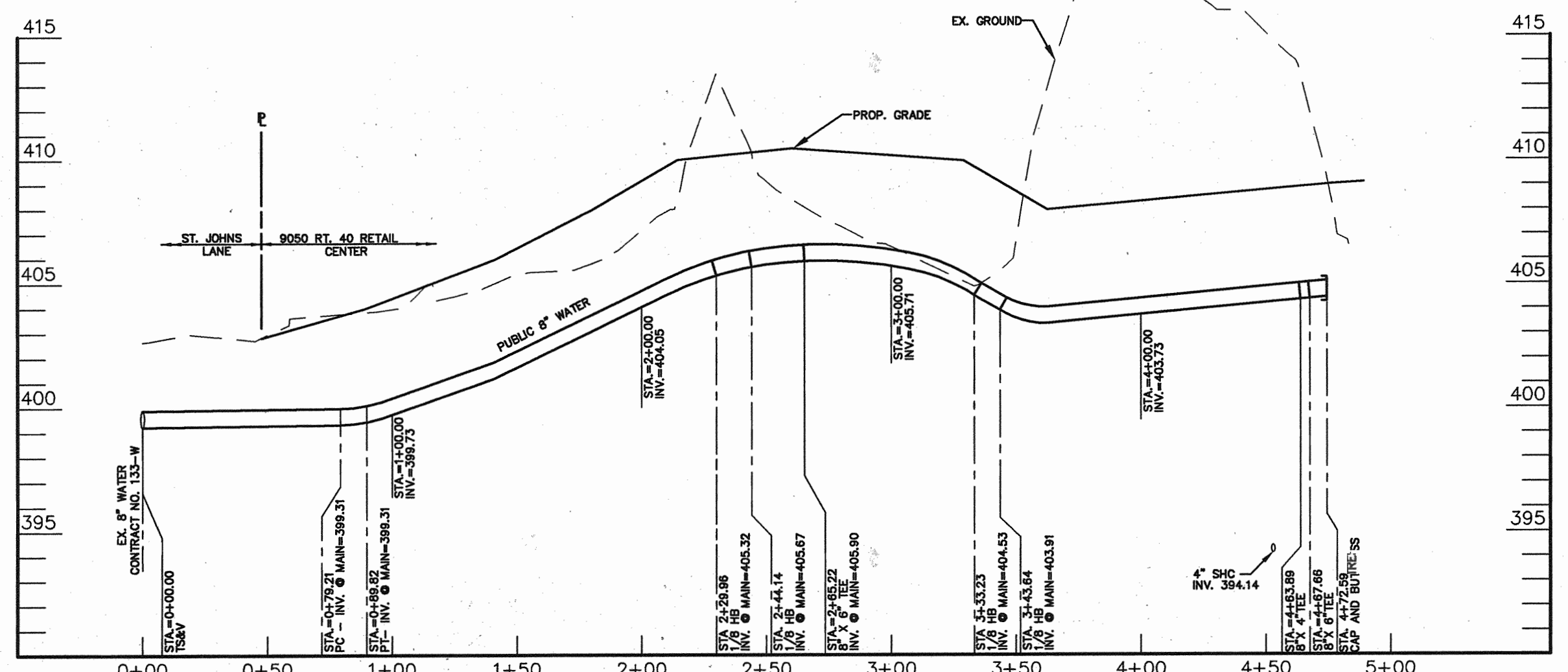
AT&T	1-800-252-1133
BGE (CONSTRUCTION SERVICES)	410-850-4820
BGE (EMERGENCY)	410-885-1400
BUREAU OF UTILITIES	410-313-4900
COLONIAL PIPELINE CO	410-795-1390
MISS UTILITY	1-800-257-7777
STATE HIGHWAY ADMINISTRATION	410-531-5533
VERIZON	1-800-743-0033/410-224-9210
- TREES AND SHRUBS ARE TO BE PROTECTED FROM DAMAGE TO THE MAXIMUM EXTENT. TREES AND SHRUBS LOCATED WITHIN THE CONSTRUCTION STRIP ARE NOT TO BE REMOVED OR DAMAGED BY THE CONTRACTOR.
- THE CONTRACTOR SHALL REMOVE TREES, STUMPS AND ROOTS ALONG THE LINE OF EXCAVATION. PAYMENT FOR SUCH REMOVAL SHALL BE INCLUDED IN THE UNIT PRICE BID FOR CONSTRUCTION OF THE MAIN.
- THE CONTRACTOR SHALL NOTIFY THE BUREAU OF HIGHWAYS, HOWARD COUNTY, AT 410-313-7450 AT LEAST FIVE (5) WORKING DAYS BEFORE OPEN CUTTING OR BORING/JACKING OF ANY COUNTY ROAD FOR LAYING WATER/SEWER MAINS OR HOUSE CONNECTIONS. THE APPROVAL OF THESE DRAWINGS WILL CONSTITUTE COMPLIANCE WITH DPW REQUIREMENTS PER SECTION 18.114(g) OF THE HOWARD COUNTY CODE.

PART II - WATER

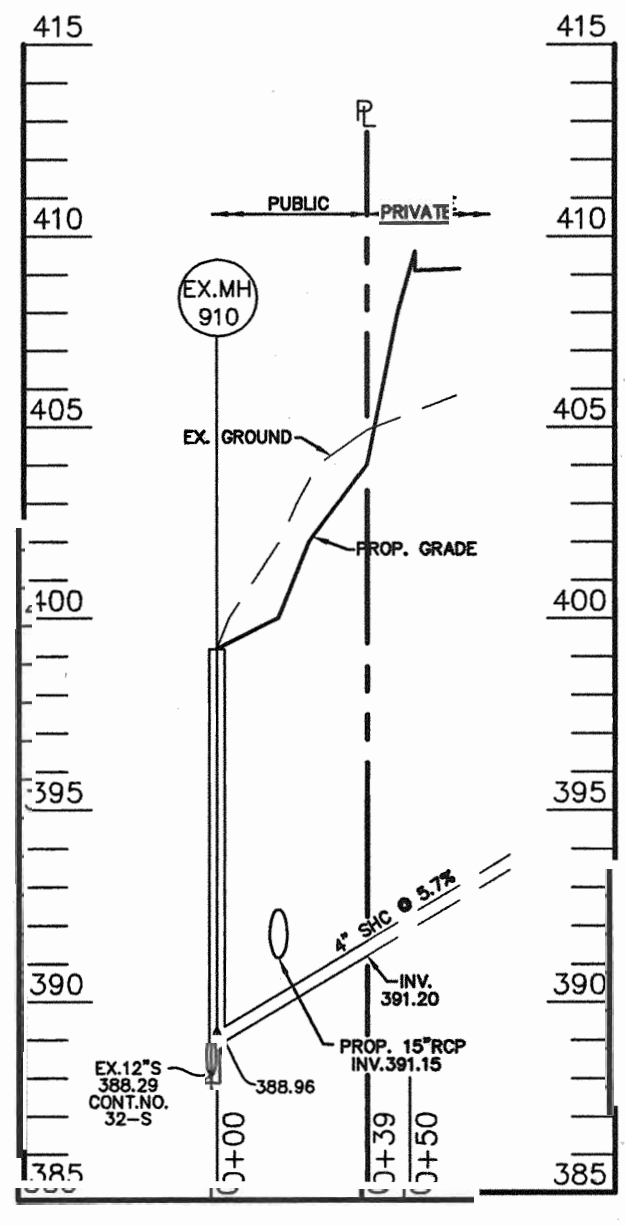
- ALL WATER MAINS SHALL BE D.I.P. CLASS 52 UNLESS OTHERWISE NOTED.
- TOPS OF ALL WATER MAINS SHALL HAVE A MINIMUM OF 3'-6" OF COVER UNLESS OTHERWISE NOTED.
- VALVES ADJACENT TO TEES SHALL BE STRAPPED TO TEES.
- ALL FITTINGS SHALL BE BUTTRESSED OR ANCHORED WITH CONCRETE IN ACCORDANCE WITH STANDARD DETAILS UNLESS OTHERWISE PROVIDED FOR ON THE DRAWINGS.
- FIRE HYDRANTS SHALL BE SET TO THE BURY LINE ELEVATIONS SHOWN ON THE DRAWINGS. ALL FIRE HYDRANTS SHALL BE INSTALLED IN ACCORDANCE WITH STANDARD DETAILS. THE SOIL AROUND THE FIRE HYDRANT SHALL BE COMPACTED IN ACCORDANCE WITH SECTION 1000 AND SECTION 1005 OF THE STANDARD SPECIFICATIONS.
- THE CONTRACTOR SHALL NOT OPERATE ANY WATER MAIN VALVES ON THE EXISTING WATER SYSTEM.

PART III - SEWER

- ALL SEWER MAINS SHALL BE D.I.P. OR P.V.S. UNLESS OTHERWISE NOTED.
- ALL MANHOLES SHALL BE 4' - 0" INSIDE DIAMETER UNLESS OTHERWISE NOTED.
- FORCE MAINS SHALL BE D.I.P. ONLY UNLESS OTHERWISE NOTED.
- MANHOLES SHOWN WITH 12" AND 16" WALLS ARE FOR BRICK MANHOLES ONLY.
- MANHOLES DESIGNATED W.T. IN PLAN AND PROFILE SHALL HAVE WATERTIGHT FRAME AND COVER, STANDARD DETAIL C6.52. WHERE WATERTIGHT MANHOLE FRAMES AND COVERS ARE USED, SET TOP OF FRAME 1'-0" ABOVE FINISHED GRADE UNLESS OTHERWISE NOTED ON THE DRAWINGS.
- HOUSE(S) WITH THE SYMBOL "C.N.S." INDICATES THAT CELLAR CANNOT BE



8" PUBLIC WATER MAIN
SCALE HORIZONTAL: 1" = 50'
VERTICAL: 1" = 5'



4" PUBLIC SEWER
SCALE HORIZONTAL: 1" = 50'
VERTICAL: 1" = 5'

HOWARD SOIL CONSERVATION DISTRICT
REVIEWED FOR HOWARD SOIL CONSERVATION DISTRICT AND MEETS TECHNICAL REQUIREMENTS

Jim Meyer 9-21-05
NATURAL RESOURCES CONSERVATION SERVICE DATE

THIS PLAN IS APPROVED FOR SOIL EROSION AND SEDIMENT CONTROL BY THE HOWARD SOIL CONSERVATION DISTRICT.

John K. Roberts 9-21-05
HOWARD SOIL CONSERVATION DISTRICT DATE

SEDIMENT CONTROL MEASURES FOR THIS CONTRACT WILL BE IMPLEMENTED IN ACCORDANCE WITH SECTION 219 OF THE HOWARD COUNTY STANDARD SPECIFICATIONS AND AS PER SITE DEVELOPMENT PLANS SDP-05-29

OWNER:
EMICON, LLC
P.O. BOX 417
ELLCOTT CITY, MD 21041

DEPARTMENT OF PUBLIC WORKS HOWARD COUNTY, MARYLAND	DEPARTMENT OF PLANNING AND ZONING HOWARD COUNTY, MARYLAND	BENCHMARK ENGINEERS • LAND SURVEYORS • PLANNERS ENGINEERING, INC. 8480 BALTIMORE NATIONAL PIKE A SUITE 418 ELLCOTT CITY, MARYLAND 21043 PHONE: 410-485-6105 FAX: 410-485-6644	DESIGN: MAN DRAFT: MAN CHK: DAM DATE: 09-05	BY NO. REVISIONS DATE	600 SCALE MAP NO. 24	BLOCK 5	9050 ROUTE 40 RETAIL CENTER PARCEL 'A' TAX MAP 24 - GRID 5 PARCEL 38 AND 96 2nd ELECTION DISTRICT HOWARD COUNTY, MARYLAND	SCALE: AS SHOWN SHEET NO. 1 OF 1
---	--	---	--	-----------------------	----------------------	---------	--	---

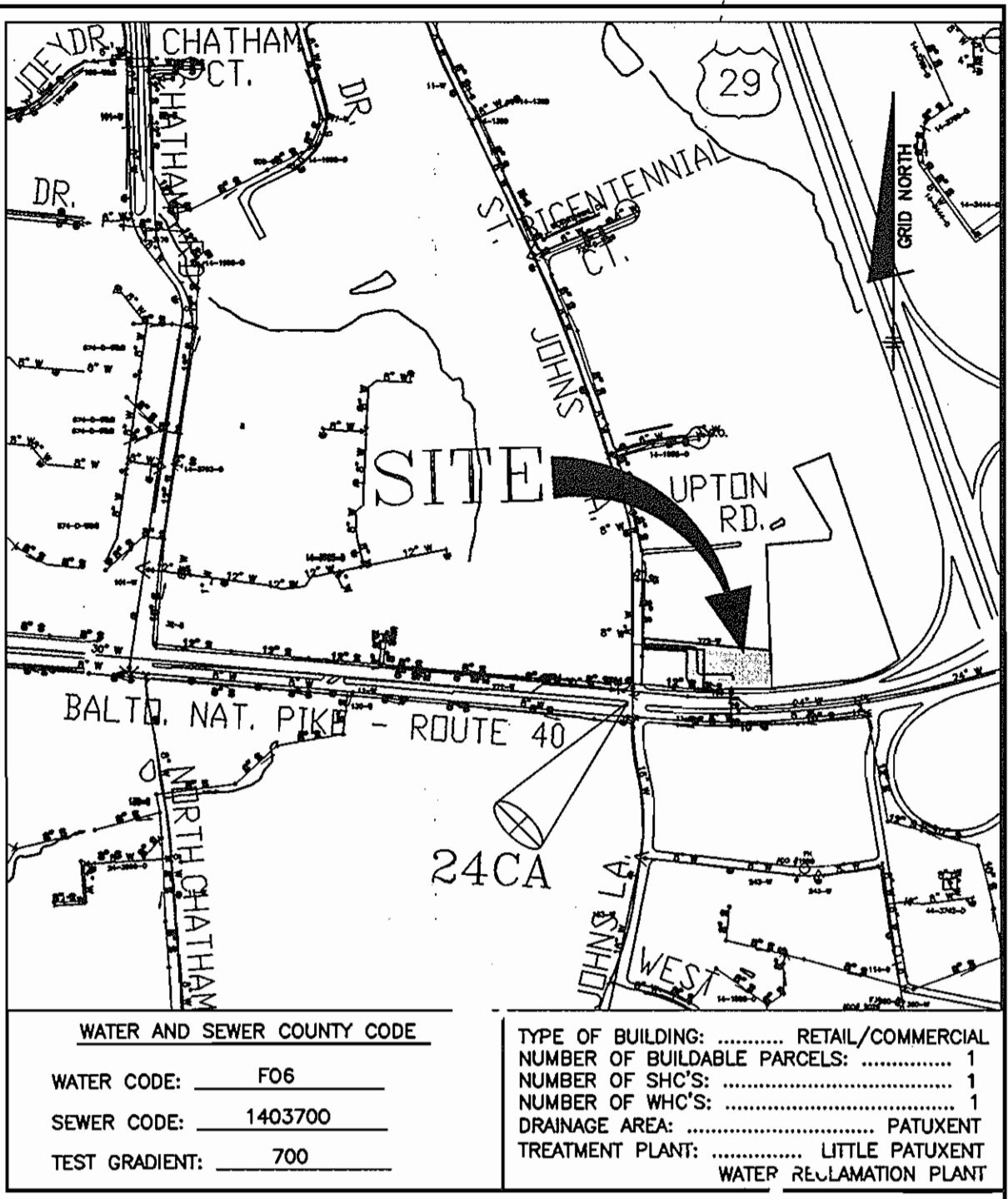
CONTRACT NO. 14-4300-D

ITEMS	QUANTITIES ESTIMATED	AS-BUILT		
		QUANTITIES	TYPE	MANUF./SUPPLIER
8" D.I.P. WATER MAIN	473 L.F.			
6" D.I.P. WATER MAIN	35 L.F.			
4" D.I.P. WATER MAIN	10 L.F.			
FIRE HYDRANT	2 EA.			
6" WATER VALVE	2 EA.			
4" WATER VALVE	1 EA.			
8"x8" TS&V	1 EA.			
8" HB	4 EA.			
4" SHC	39 L.F.			

NAME OF UTILITY CONTRACTOR:
SURVEY AND DRAFTING DIVISION AS-BUILT DATE:

BENCH MARKS NAD '83

HO. CO. 24BA ELEV. 385.67
 STAMPED DISC ON CONCRETE MONUMENT BEING 23' NORTH OF A TRAFFIC SIGNAL POLE, 5.6' SOUTHWEST OF THE PC OF THE EDGE OF PAVING OF JOHNS HOPKINS ROAD AND 3.3' SOUTH OF THE EDGE OF PAVING OF JOHNS HOPKINS ROAD.
 N 586,783.250 E 1,359,211.698
 HO. CO. 24CA ELEV. 398.34
 STAMPED DISC ON CONCRETE MONUMENT BEING 8' EAST OF BOE POLF #553368, 13.3' SOUTH OF LEFT REAR CORNER OF AN INLET AND 2.7' NORTH OF THE EDGE OF PAVING OF HAMMOND PARKWAY.
 N 586,506.183 E 1,361,634.312



GENERAL NOTES

- PART I**
- APPROXIMATE LOCATION OF EXISTING MAINS ARE SHOWN. THE CONTRACTOR SHALL TAKE ALL NECESSARY PRECAUTIONS TO PROTECT EXISTING MAINS AND SERVICES AND MAINTAIN UNINTERRUPTED SERVICE. ANY DAMAGE INCURRED SHALL BE REPAIRED IMMEDIATELY TO THE SATISFACTION OF THE ENGINEER AT THE CONTRACTOR'S EXPENSE.
 - TOPOGRAPHIC FIELD SURVEYS WERE PERFORMED IN MAY 2003 BY FREDERICK WARD ASSOCIATES AND SUPPLEMENTED BY BENCHMARK ENGINEERING, INC IN NOVEMBER 2004.
 - HORIZONTAL AND VERTICAL SURVEY CONTROLS:
THE COORDINATES SHOWN ON THE DRAWINGS ARE BASED ON MARYLAND STATE REFERENCE SYSTEM NAD '83/91 AS PROJECTED BY HOWARD COUNTY GEODETIC CONTROL STATIONS No. 1, No. 2, AND No. 3. ALL VERTICAL CONTROLS ARE BASED ON NAVD '88. VERTICAL CONTROLS PROVIDED ON THE DRAWINGS ARE:
 - ALL PIPE ELEVATIONS SHOWN ARE INVERT ELEVATIONS UNLESS OTHERWISE NOTED ON THE PLANS.
 - CLEAR ALL UTILITIES BY A MINIMUM OF 12 INCHES. CLEAR ALL POLES BY 5'-0" MINIMUM OR TUNNEL AS REQUIRED UNLESS OTHERWISE NOTED. THE OWNER HAS CONTACTED THE UTILITY COMPANIES AND HAS MADE ARRANGEMENTS FOR BRACING OF POLES AS SHOWN ON THE DRAWINGS. IN THE EVENT THE CONTRACTOR'S WORK REQUIRES THE BRACING OF ADDITIONAL POLES, ANY COST INCURRED BY THE OWNER FOR BRACING OF ADDITIONAL POLES OR DAMAGES SHALL BE DEDUCTED FROM MONIES OWED THE CONTRACTOR. THE CONTRACTOR SHALL COORDINATE WITH THE UTILITY COMPANIES TO SCHEDULE THE BRACING OF THE POLES.
 - FOR DETAILS NOT SHOWN ON THE DRAWINGS, AND FOR MATERIALS AND CONSTRUCTION METHODS, USE HOWARD COUNTY DESIGN MANUAL, VOLUME IV, STANDARD SPECIFICATIONS AND DETAILS FOR CONSTRUCTION (LATEST EDITION). THE CONTRACTOR SHALL HAVE A COPY OF VOLUME IV ON THE JOB.
 - WHERE TEST PITS HAVE BEEN MADE ON EXISTING UTILITIES, THEY ARE NOTED BY THE SYMBOL [Symbol] AT THE LOCATIONS OF THE TEST PITS. A NOTE OR NOTES CONTAINING THE RESULTS OF THE TEST PIT OR PITS IS INCLUDED ON THE DRAWINGS. EXISTING UTILITIES IN THE VICINITY OF THE PROPOSED WORK FOR WHICH TEST PITS HAVE NOT BEEN DUG SHALL BE LOCATED BY THE CONTRACTOR TWO WEEKS IN ADVANCE OF CONSTRUCTION OPERATIONS AT HIS OWN EXPENSE.
 - THE CONTRACTOR SHALL NOTIFY THE FOLLOWING UTILITY COMPANIES OR AGENCIES AT LEAST FIVE (5) WORKING DAYS BEFORE STARTING WORK SHOWN ON THESE PLANS:

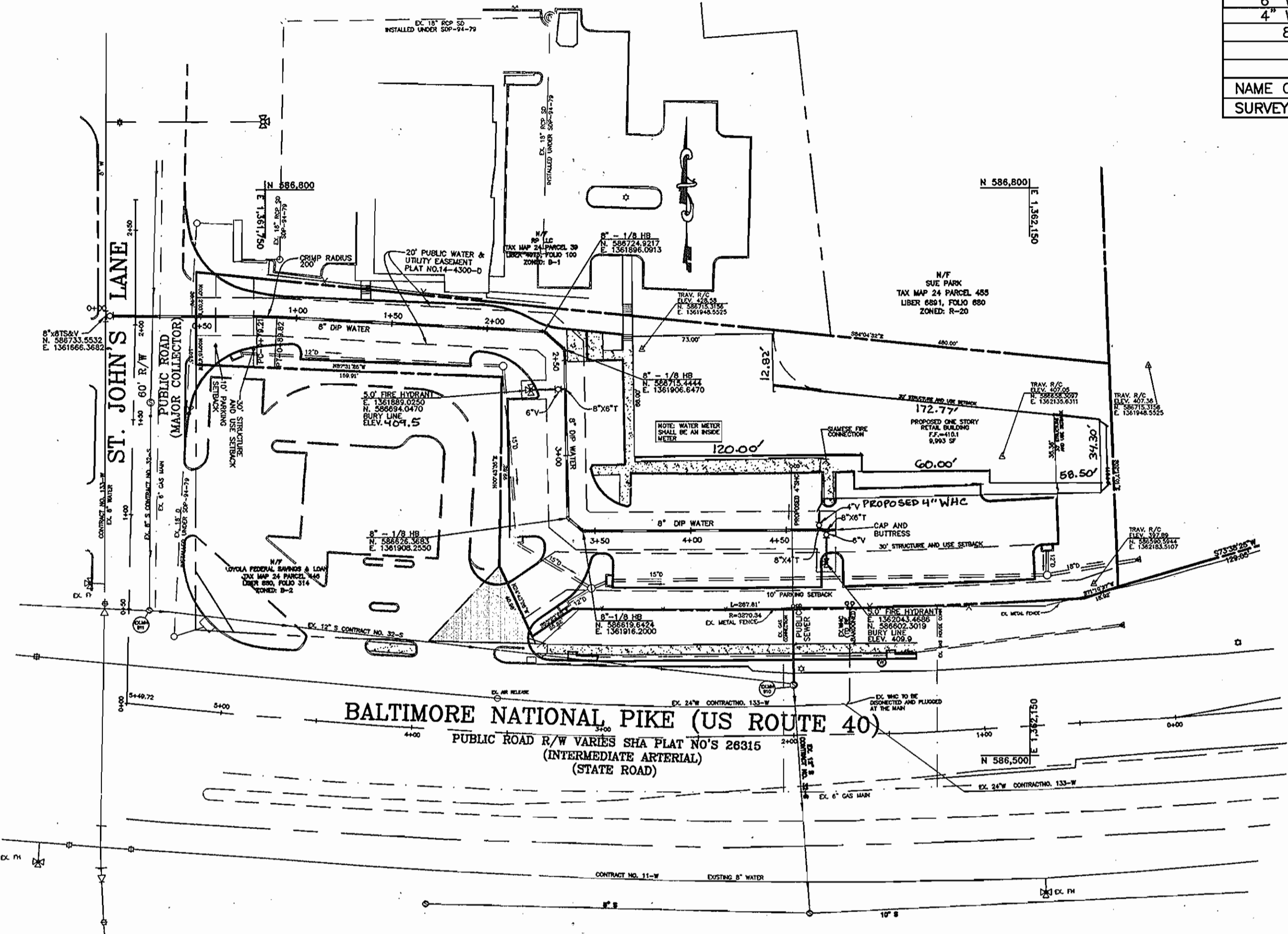
AT&T	1-800-252-1133
BGE (CONSTRUCTION SERVICES)	410-850-4820
BGE (EMERGENCY)	410-685-1400
BUREAU OF UTILITIES	410-313-4900
COLONIAL PIPELINE CO	410-795-1300
MISS UTILITY	1-800-257-7777
STATE HIGHWAY ADMINISTRATION	410-531-5533
VERIZON	1-800-743-0033/410-224-9210
 - TREES AND SHRUBS ARE TO BE PROTECTED FROM DAMAGE TO THE MAXIMUM EXTENT. TREES AND SHRUBS LOCATED WITHIN THE CONSTRUCTION STRIP ARE NOT TO BE REMOVED OR DAMAGED BY THE CONTRACTOR.
 - THE CONTRACTOR SHALL REMOVE TREES, STUMPS AND ROOTS ALONG THE LINE OF EXCAVATION. PAYMENT FOR SUCH REMOVAL SHALL BE INCLUDED IN THE UNIT PRICE BID FOR CONSTRUCTION OF THE MAIN.
 - THE CONTRACTOR SHALL NOTIFY THE BUREAU OF HIGHWAYS, HOWARD COUNTY, AT 410-313-7450 AT LEAST FIVE (5) WORKING DAYS BEFORE OPEN CUTTING OR BORING/JACKING OF ANY COUNTY ROAD FOR LAYING WATER/SEWER MAINS OR HOUSE CONNECTIONS. THE APPROVAL OF THESE DRAWINGS WILL CONSTITUTE COMPLIANCE WITH DPW REQUIREMENTS PER SECTION 18.114(g) OF THE HOWARD COUNTY CODE.

PART II - WATER

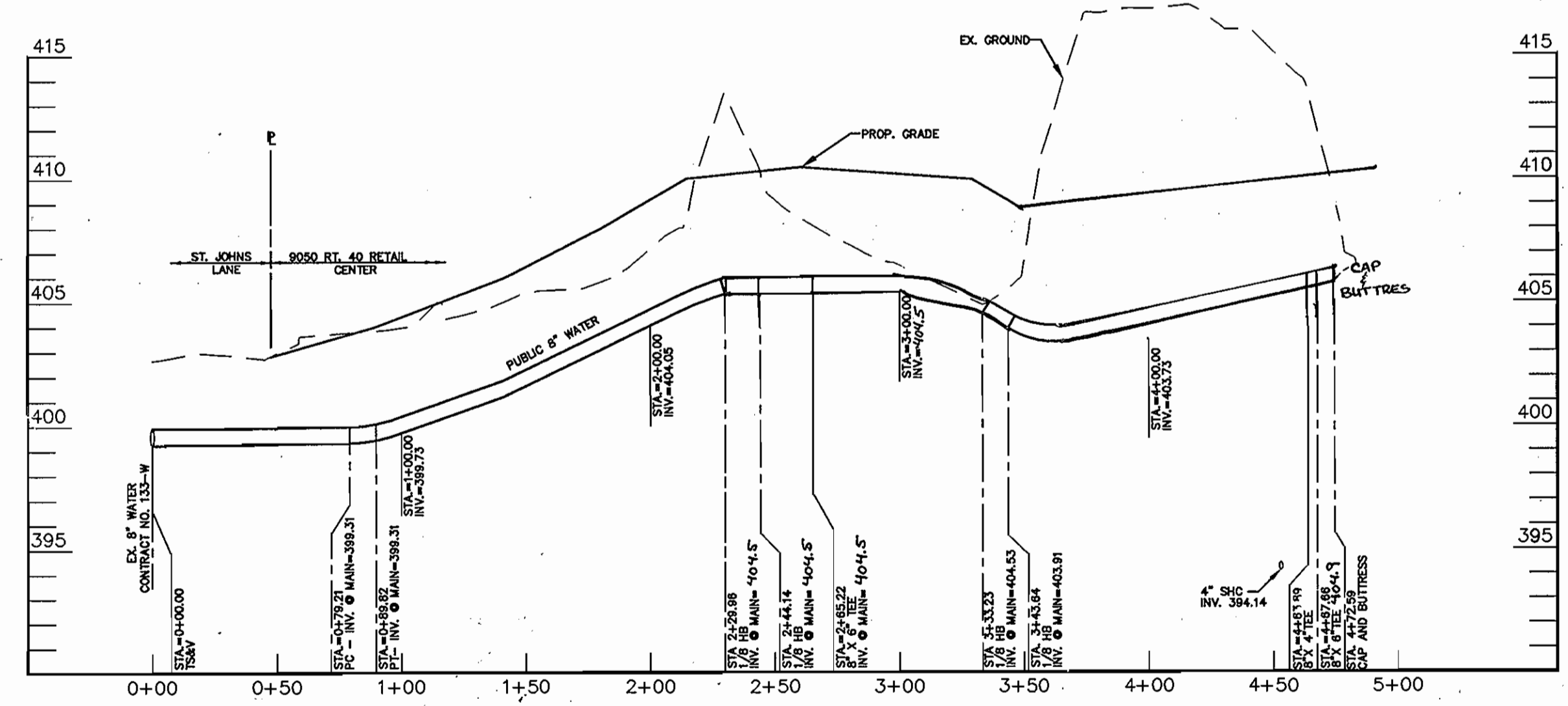
- ALL WATER MAINS SHALL BE D.I.P. CLASS 52 UNLESS OTHERWISE NOTED.
- TOPS OF ALL WATER MAINS SHALL HAVE A MINIMUM OF 3'-6" OF COVER UNLESS OTHERWISE NOTED.
- VALVES ADJACENT TO TEES SHALL BE STRAPPED TO TEES.
- ALL FITTINGS SHALL BE BUTTRESSED OR WELDED WITH CONCRETE IN ACCORDANCE WITH STANDARD DETAILS UNLESS OTHERWISE PROVIDED FOR ON THE DRAWINGS.
- FIRE HYDRANTS SHALL BE SET TO THE BURY LINE ELEVATIONS SHOWN ON THE DRAWINGS. ALL FIRE HYDRANTS SHALL BE INSTALLED IN ACCORDANCE WITH STANDARD DETAILS. THE SOIL AROUND THE FIRE HYDRANT SHALL BE COMPACTED IN ACCORDANCE WITH SECTION 1000 AND SECTION 1005 OF THE STANDARD SPECIFICATIONS.
- THE CONTRACTOR SHALL NOT OPERATE ANY WATER MAIN VALVES ON THE EXISTING WATER SYSTEM.

PART III - SEWER

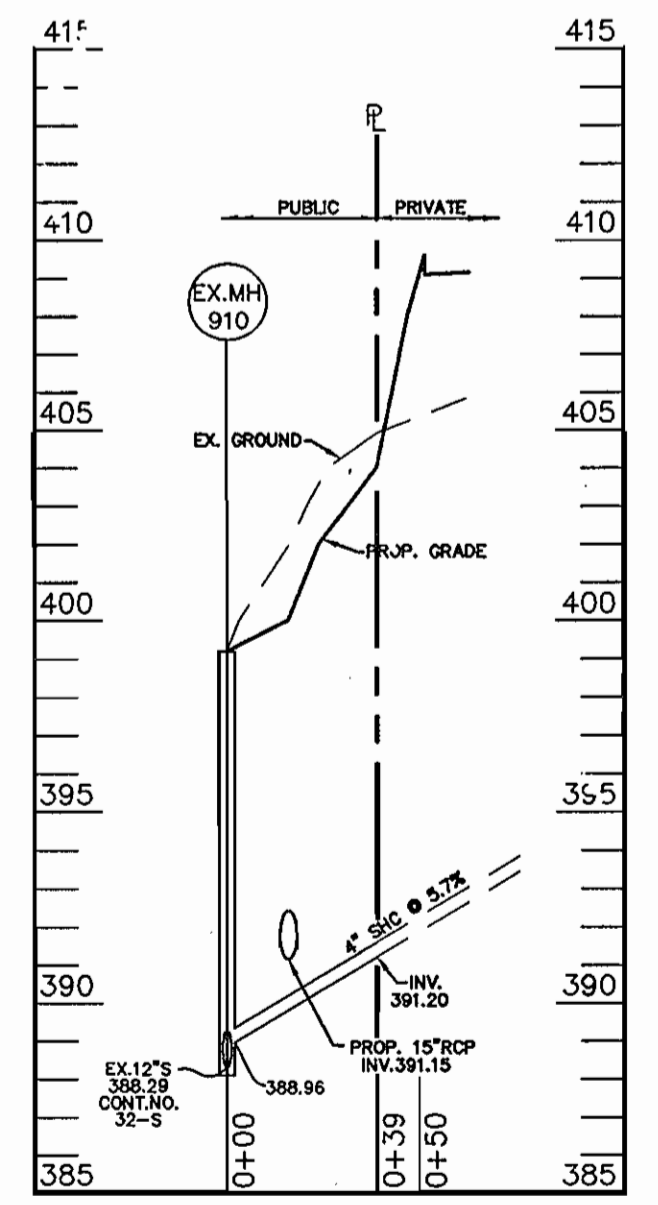
- ALL SEWER MAINS SHALL BE D.I.P. OR P.V.C. UNLESS OTHERWISE NOTED.
- ALL MANHOLES SHALL BE 4' - 0" INSIDE DIAMETER UNLESS OTHERWISE NOTED.
- FORCE MAINS SHALL BE D.I.P. ONLY UNLESS OTHERWISE NOTED.
- MANHOLES SHOWN WITH 12" AND 16" WALLS ARE FOR BRICK MANHOLES ONLY.
- MANHOLES DESIGNATED W.T. IN PLAN AND PROFILE SHALL HAVE WATERTIGHT FRAME AND COVER. STANDARD DETAIL GS-52, WHERE WATERTIGHT MANHOLE FRAMES AND COVERS ARE USED, SET TOP OF FRAME 1'-6" ABOVE FINISHED GRADE UNLESS OTHERWISE NOTED ON THE DRAWINGS.
- HOUSE(S) WITH THE SYMBOL "C.N.S." INDICATES THAT CELLAR CANNOT BE



PLAN VIEW
SCALE: 1" = 50'



8" PUBLIC WATER MAIN
SCALE HORIZONTAL: 1" = 50'
VERTICAL: 1" = 5'



4" PUBLIC SEWER
SCALE HORIZONTAL: 1" = 50'
VERTICAL: 1" = 5'

HOWARD SOIL CONSERVATION DISTRICT:
REVIEWED FOR HOWARD SOIL CONSERVATION DISTRICT AND MEETS TECHNICAL REQUIREMENTS

Jim Magnus 9-21-05
NATURAL RESOURCES CONSERVATION SERVICE DATE

John K. Roberts 9-21-05
HOWARD SOIL CONSERVATION DISTRICT DATE

THIS PLAN IS APPROVED FOR SOIL EROSION AND SEDIMENT CONTROL BY THE HOWARD SOIL CONSERVATION DISTRICT.

SEDIMENT CONTROL MEASURES FOR THIS CONTRACT WILL BE IMPLEMENTED IN ACCORDANCE WITH SECTION 219 OF THE HOWARD COUNTY STANDARD SPECIFICATIONS AND AS PER SITE DEVELOPMENT PLANS SDP-05-29

OWNER:
EMICON, LLC
P.O. BOX 417
ELLICOTT CITY, MD 21041

DEPARTMENT OF PUBLIC WORKS HOWARD COUNTY, MARYLAND	DEPARTMENT OF PLANNING AND ZONING HOWARD COUNTY, MARYLAND	BENCHMARK ENGINEERS & LAND SURVEYORS & PLANNERS ENGINEERING, INC. 8480 BALTIMORE NATIONAL PIKE & SUITE 418 ELLICOTT CITY, MARYLAND 21043 PHONE: 410-485-8105 FAX: 410-485-8844	DESIGN: MAN DRAFT: MAN CHK: DAM DATE: 09-05	EDD 1 BY NO. REVISIONS	600 SCALE MAP NO. 24	PUBLIC WATER AND SEWER PLAN	9050 ROUTE 40 RETAIL CENTER PARCEL 'A' TAX MAP 24 - GRID 5 PARCEL 38 AND 96 2nd ELECTION DISTRICT HOWARD COUNTY, MARYLAND	SCALE: AS SHOWN
<i>Rhonda Beaman</i> 9-13-05 CHIEF, BUREAU OF UTILITIES DATE	<i>John K. Roberts</i> 9-21-05 CHIEF, DEVELOPMENT ENGINEERING DIVISION DATE	<i>Donald Maas</i> 9/21/05	DATE: 09-05	REVISIONS	600 SCALE MAP NO. 24	BLOCK 5	CONTRACT NO. 14-4300-D	SHEET NO. 1 OF 1