

VICINITY MAP  
SCALE: 1" = 600'

COORDINATE CHART		
DESCRIPTION	NORTHING	EASTING
WATERLINE 'A':		
STA. 0+00 6" W @ EX. 8" W 6"x8" TAPPING SLEEVE & VALVE	552,573.72	1,382,663.19
STA. 0+07.9 6"x6" TEE WATERLINE 'B' STA. 0+00	552,580.97	1,382,666.41
STA. 0+34.4 6"-1/8" HORIZ. BEND	552,605.15	1,382,677.17
STA. 0+57.6 6"-1/16" HORIZ. BEND	552,626.77	1,382,668.87
STA. 1+09.5 BEGIN CRIMP	552,664.44	1,382,633.13
STA. 1+16.5 END CRIMP	552,669.61	1,382,628.39
STA. 1+24.8 6"-1/8" HORIZ. BEND	552,720.79	1,382,583.13
STA. 2+01.3 6"-1/8" HORIZ. BEND	552,737.23	1,382,584.14
STA. 2+28.6 6"-1/4" HORIZ. BEND	552,755.34	1,382,604.61
STA. 2+49.2 TEMP. 6" CAP	552,738.99	1,382,619.07
WATERLINE 'B':		
STA. 0+00 6"x6" TEE WATERLINE 'A' STA. 0+07.9	552,580.97	1,382,666.41
STA. 0+28.41 6"x6" TEE	552,569.41	1,382,692.36
STA. 0+30.31 6" VALVE	552,557.68	1,382,691.59
STA. 0+35.21 FIRE HYDRANT	552,563.19	1,382,689.59
WATERLINE 'C':		
STA. 0+00 8"x6" TEE WATERLINE 'A' STA. 0+07.9	552,580.97	1,382,666.41
STA. 0+32.4 FIRE HYDRANT	552,281.91	1,382,679.73
STA. 0+32.4 FIRE HYDRANT	552,817.65	1,382,648.01

# PUBLIC WATER CONSTRUCTION PLANS

## DORSEY BUSINESS PARK, PARCEL E

### MARYLAND HOSPITAL ASSOCIATION BUILDING NO. 2

#### 1st ELECTION DISTRICT, HOWARD COUNTY, MARYLAND

#### CONTRACT NO. 44-4297-D

### BENCHMARK DATA

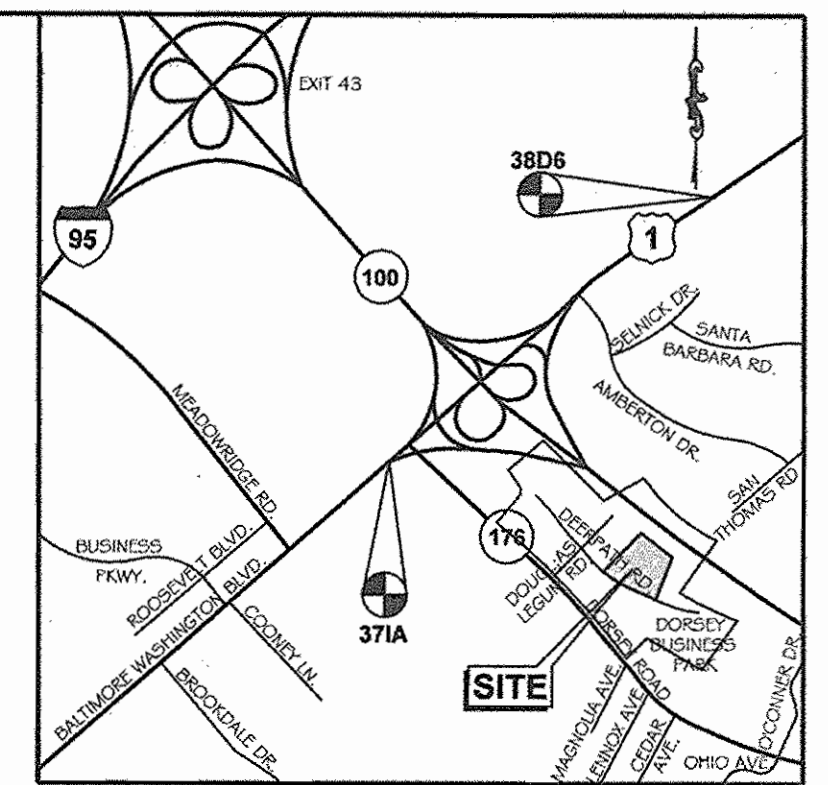
B.M. 371A ELEV. 195.760  
N 553,515.47  
E 1,379,982.154

DISC SET ON TOP OF CONCRETE COLUMN ALONG NORTH SIDE OF US RTE 1. 247 FEET NORTH EAST OF MAIN ENTRANCE TO MEADOWBRIDGE MEMORIAL PARK.

B.M. 38D6 ELEV. 175.228  
N 557,155.459  
E 1,384,992.262

DISC SET ON TOP OF CONCRETE COLUMN ALONG SOUTHWEST SIDE OF US RTE 1. 6.6 FEET IN FRONT OF CHAIN LINK FENCE IN FRONT OF THE ATLANTIC SUPPLY CO.

WATER AND SEWER COUNTY CODE	
WATER CODE:	A-01
SEWER CODE:	2280000
TEST GRADIENT:	450
TYPE OF BUILDING:	COMMERCIAL
NUMBER OF LOTS:	N/A
NUMBER OF SMC:	1
NUMBER OF WIC:	1
DRAINAGE AREA:	PATAPSCO
TREATMENT PLANT:	

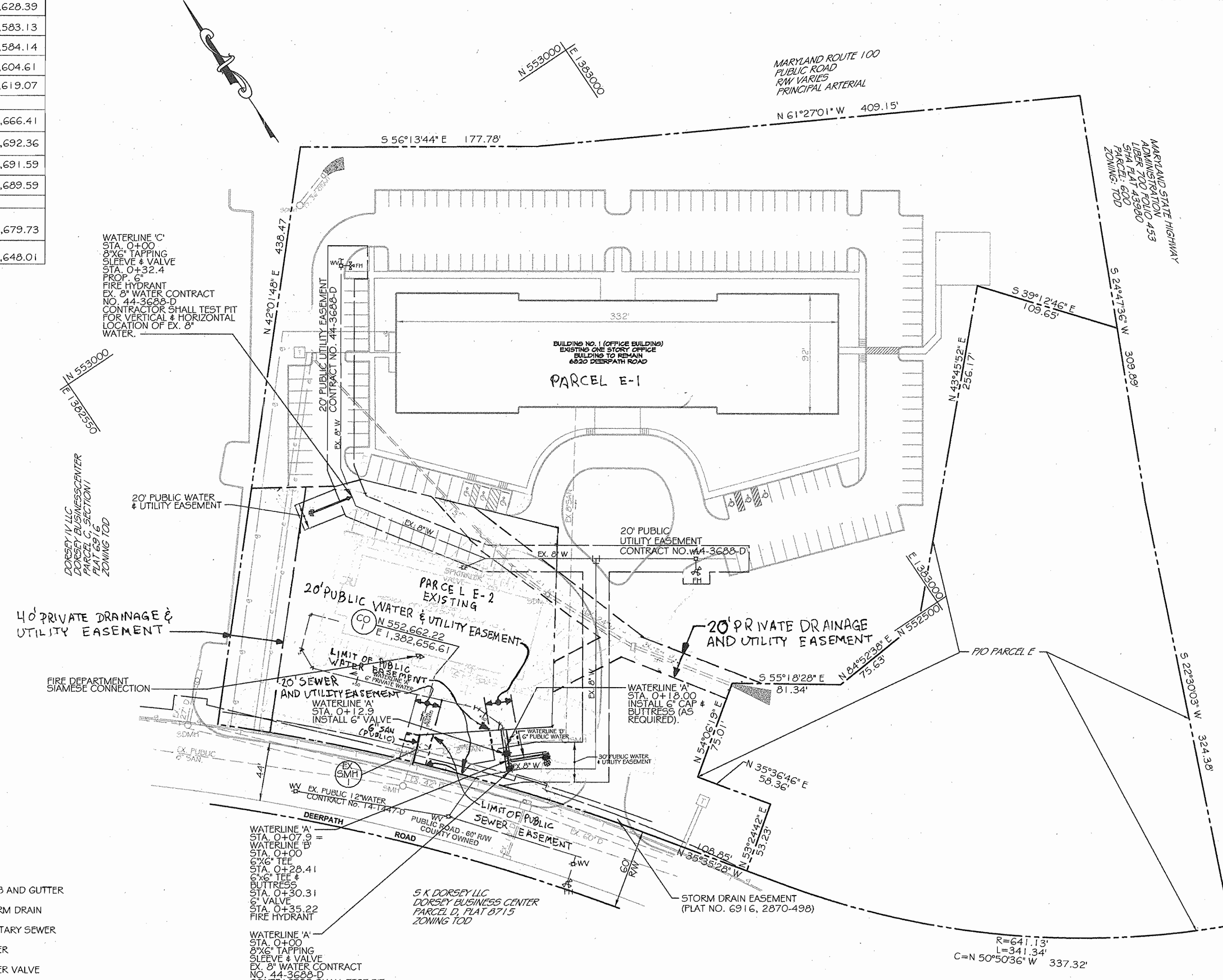


VICINITY MAP  
SCALE: 1" = 2000'

### GENERAL NOTES

- APPROXIMATE LOCATIONS OF EXISTING MAINS ARE SHOWN. THE CONTRACTOR SHALL TAKE ALL NECESSARY PRECAUTIONS TO PROTECT EXISTING MAINS AND SERVICES AND MAINTAIN UNINTERRUPTED SERVICE. ANY DAMAGE INCURRED SHALL BE REPAIRED IMMEDIATELY TO THE SATISFACTION OF THE ENGINEER AT THE CONTRACTOR'S EXPENSE.
- TOPOGRAPHIC FIELD SURVEYS WERE PERFORMED ON OCTOBER, 2004 BY KCI TECHNOLOGIES INC.
- HORIZONTAL AND VERTICAL SURVEY CONTROLS:  
THE COORDINATES ON THE DRAWINGS ARE BASED ON MARYLAND STATE REFERENCE SYSTEM NAD '83/'91 AS PROJECTED BY HOWARD COUNTY GEODETIC CONTROL STATIONS NOS. 371A & 38D6. ALL VERTICAL CONTROLS ARE BASED ON NAVD '88. VERTICAL CONTROLS PROVIDED ON THE DRAWINGS ARE
- ALL PIPE ELEVATIONS SHOWN ARE INVERT ELEVATIONS UNLESS OTHERWISE NOTED ON THE PLANS.
- CLEAR ALL UTILITIES BY A MINIMUM OF 12 INCHES. CLEAR ALL POLES BY 5'-0" MINIMUM OR TUNNELS AS REQUIRED UNLESS OTHERWISE NOTED. THE OWNER HAS CONTACTED THE UTILITY COMPANIES AND HAS MADE ARRANGEMENTS FOR BRACING OF POLES AS SHOWN ON THE DRAWINGS. IN THE EVENT THE CONTRACTOR'S WORK REQUIRES THE BRACING OF ADDITIONAL POLES, ANY COST INCURRED BY THE OWNER FOR THE BRACING OF ADDITIONAL POLES OR DAMAGES SHALL BE DEDUCTED FROM MONIES OWED THE CONTRACTOR. THE CONTRACTOR SHALL COORDINATE WITH THE UTILITY COMPANIES TO SCHEDULE THE BRACING OF THE POLES.
- FOR DETAILS NOT SHOWN ON THE DRAWINGS, AND FOR MATERIALS AND CONSTRUCTION METHODS, USE HOWARD COUNTY DESIGN MANUAL, VOLUME IV, STANDARD SPECIFICATIONS AND DETAILS FOR CONSTRUCTION (LATEST EDITION). THE CONTRACTOR SHALL HAVE A COPY OF VOLUME IV ON THE JOB.
- EXISTING UTILITIES IN THE VICINITY OF THE PROPOSED WORK FOR WHICH TEST FITS HAVE NOT BEEN DUG SHALL BE LOCATED BY THE CONTRACTOR TWO WEEKS IN ADVANCE OF CONSTRUCTION OPERATIONS AT HIS OWN EXPENSE.
- THE CONTRACTOR SHALL NOTIFY THE FOLLOWING UTILITY COMPANIES OR AGENCIES AT LEAST FIVE WORKING DAYS BEFORE STARTING WORK SHOWN ON THESE PLANS.  

AT&T	1-800-252-4155
BGE (CONSTRUCTION SERVICES)	410-850-4620
BGE (EVERSEBY)	410-695-1400
BUREAU OF UTILITIES	410-315-4400
COLONIAL PIPELINE CO.	410-785-1390
MISS UTILITY	1-800-251-7777
STATE HIGHWAY ADMINISTRATION	410-531-5533
VERIZON	1-800-743-0033/410-224-4210
- TREES AND SHRUBS ARE TO BE PROTECTED FROM DAMAGE TO THE MAXIMUM EXTENT. TREES AND SHRUBS LOCATED WITHIN THE CONSTRUCTION STRIP ARE NOT TO BE REMOVED OR DAMAGED BY THE CONTRACTOR.
- THE CONTRACTOR SHALL REMOVE TREES, STUMPS AND ROOTS ALONG THE LINE OF EXCAVATION. PAYMENT FOR SUCH REMOVAL SHALL BE INCLUDED IN THE UNIT PRICE BID FOR CONSTRUCTION OF THE MAIN.  
 PART II - WATER  
 1. ALL WATER MAINS SHALL BE D.I.P. CLASS 52 UNLESS OTHERWISE NOTED.  
 2. TOPS OF ALL WATER MAINS SHALL HAVE A MINIMUM OF 3'-6" COVER UNLESS OTHERWISE NOTED.  
 3. VALVES ADJACENT TO TEES SHALL BE STRAPPED TO TEES.  
 4. ALL FITTINGS SHALL BE BUTTRESSED OR ANCHORED WITH CONCRETE IN ACCORDANCE WITH STANDARD DETAILS UNLESS OTHERWISE PROVIDED FOR ON THE DRAWINGS.  
 5. FIRE HYDRANTS SHALL BE SET TO THE BURY LINE ELEVATIONS SHOWN ON THE DRAWINGS. ALL FIRE HYDRANTS SHALL BE INSTALLED IN ACCORDANCE WITH STANDARD DETAILS. THE SOIL AROUND THE FIRE HYDRANT SHALL BE COMPACTED IN ACCORDANCE WITH SECTION 1000 AND SECTION 12005 OF THE STANDARD SPECIFICATIONS.  
 6. THE CONTRACTOR SHALL NOT OPERATE ANY WATER MAIN VALVES ON THE EXISTING WATER SYSTEM.  
 PART III - SEWER  
 1. ALL SEWER SHALL BE D.I.P. OR PVC UNLESS OTHERWISE NOTED.  
 2. ALL MANHOLES SHALL BE 4'-0" INSIDE DIAMETER UNLESS OTHERWISE NOTED.  
 3. FORCE MAINS SHALL BE D.I.P. ONLY.  
 4. MANHOLES SHOWN WITH 12" AND 16" WALLS ARE BRICK MANHOLES ONLY.  
 5. MANHOLES DESIGNATED W/T IN PLAN AND PROFILE SHALL HAVE WATERTIGHT FRAME AND COVER, STANDARD DETAIL 66-52, WHERE WATERTIGHT MANHOLE FRAMES AND COVERS ARE USED, SET TOP OF FRAME 1'-6" ABOVE FINISHED GRADE UNLESS OTHERWISE NOTED ON THE DRAWINGS.



SITE PLAN  
SCALE: 1" = 50'

QUANTITIES				
ITEMS	QUANTITIES ESTIMATED	QUANTITIES	AS-BUILT TYPE	MANUF./SUPPLIER
6" WATER	88 LF.	88 LF.	DIP CL-52	ATLANTIC/FERGUSON
6" VALVE	3 EA.	3 EA.	GATE VALVE	MUELLER/FERGUSON
6"x6" TEE	1 EA.	1 EA.	M.S. TEE	TULER/FERGUSON
FIRE HYDRANT	2 EA.	2 EA.	A 47B	MUELLER/FERGUSON
8"x6" TAPPING SLEEVE & VALVE	2 EA.	2 EA.	#66-85D	SMITH/FERGUSON
			A236016 VALVE	HARRIS/FERGUSON

NAME OF UTILITY CONTRACTOR: GRAY & SON  
SURVEY AND DRAFTING DIVISION AS-BUILT DATE:

HOWARD SOIL CONSERVATION DISTRICT:  
REVIEWED FOR HOWARD SOIL CONSERVATION DISTRICT AND MEETS TECHNICAL REQUIREMENTS

*John R. Robertson* 8/15/05  
NATURAL RESOURCES CONSERVATION SERVICE DATE

THIS PLAN IS APPROVED FOR SOIL EROSION AND SEDIMENT CONTROL BY THE HOWARD SOIL CONSERVATION DISTRICT

*John R. Robertson* 8/15/05  
HOWARD SOIL CONSERVATION DISTRICT DATE

SEEDMENT CONTROL MEASURES FOR THIS CONTRACT WILL BE IMPLEMENTED IN ACCORDANCE WITH SECTION 219 OF THE HOWARD COUNTY STANDARD SPECIFICATIONS AND AS PER THE SITE DEVELOPMENT PLANS SDP-05-088.

DEPARTMENT OF PUBLIC WORKS  
HOWARD COUNTY, MARYLAND

*R. L. B. B. B.* 8-15-05  
CHIEF, BUREAU OF UTILITIES DATE

DEPARTMENT OF PLANNING AND ZONING  
HOWARD COUNTY, MARYLAND

*John R. Robertson* 8/15/05  
CHIEF, DEVELOPMENT ENGINEERING DIVISION DATE

ENGINEERS  
PLANNERS  
SCIENTISTS  
CONSTRUCTION MANAGERS

**KCI TECHNOLOGIES**  
10 NORTH PARK DRIVE  
HUNT VALLEY, MD 21030  
PHONE (410) 316-7800  
FAX (410) 316-7817  
www.kci.com

**OBRECHT PROPERTIES, LLC**  
9415 Deereco Road, Suite 200  
Timonium, MD 21093  
410-561-5959  
Fax 410-561-2961

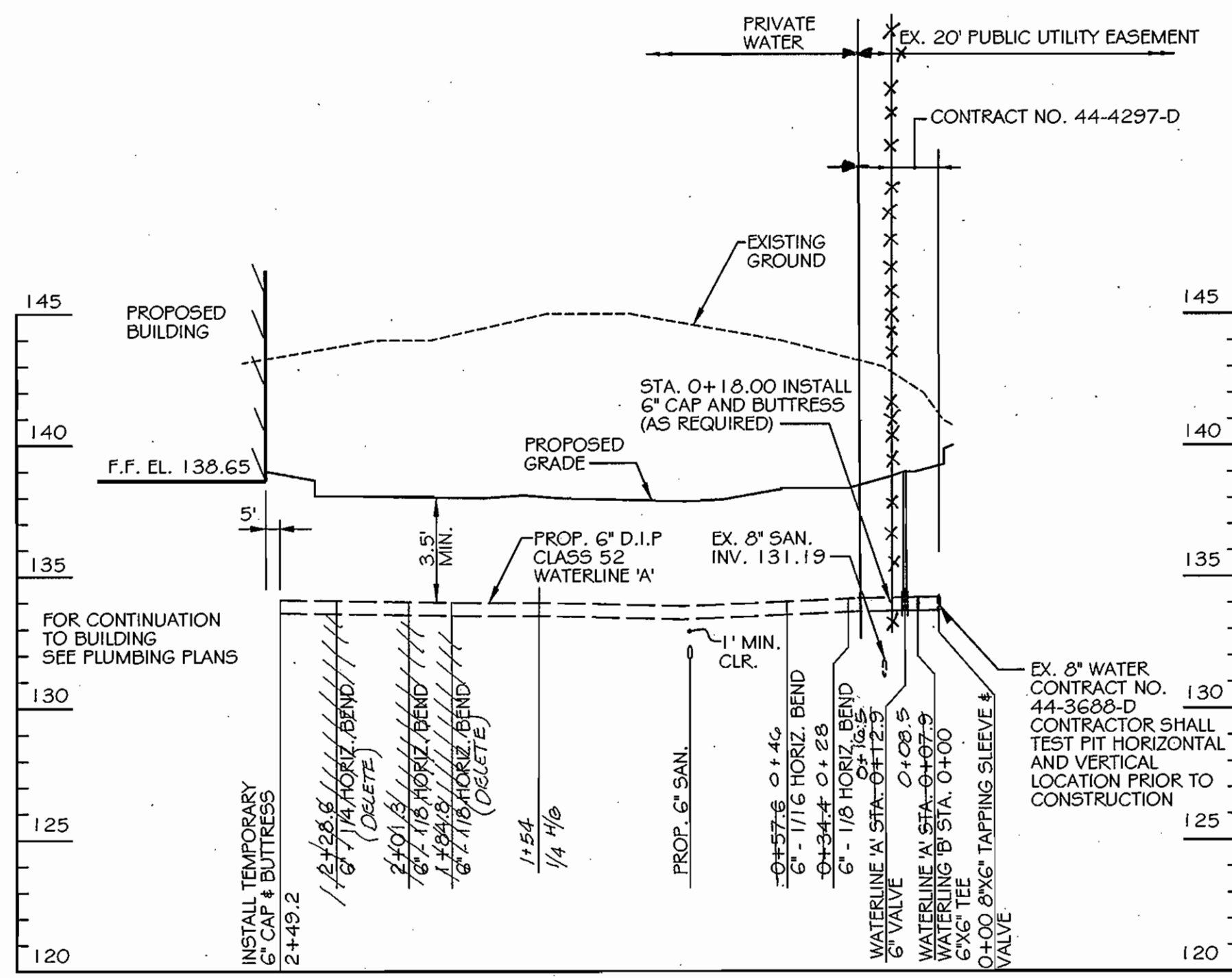
**COLIMORE GALLOW ARCHITECTS**  
1240 Key Highway  
Baltimore, MD 21230  
TEL 410.752.3720  
FAX 410.752.4823  
colimorgallow.com

NO.	REVISIONS DESCRIPTION	DATE
1	ADD/DELETE DATA	10/20/06
2	ADDED PROPERTY LINE, PUBLIC WATER & SEWER, & EASEMENTS	6/12/07

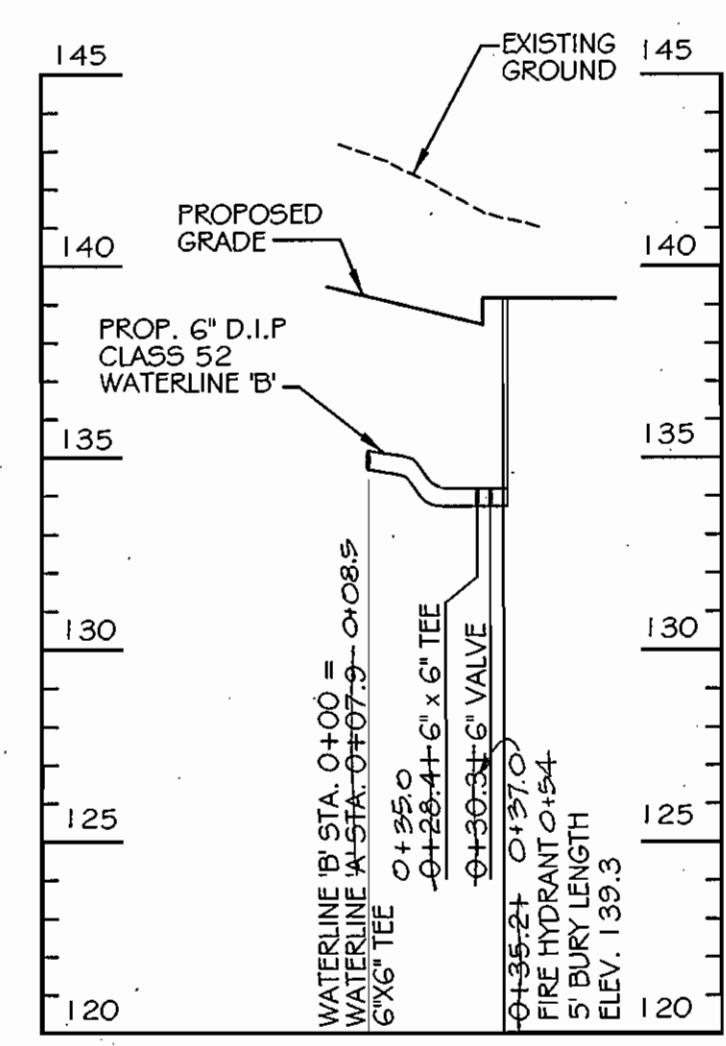
**WATER AND SEWER PLAN**  
600 SCALE MAP NO. 37 BLOCK 22

DORSEY BUSINESS PARK, PARCEL E-1  
MARYLAND HOSPITAL ASSOCIATION  
BUILDING NO. 2  
CONTRACT NO. 44-4297-D  
6820 DEERPATH ROAD, ELK RIDGE, MD 21075  
1ST ELECTION DISTRICT, HOWARD COUNTY, MARYLAND  
PARCEL 634  
DATE: JULY 22, 2005 SHEET: 1 OF 2

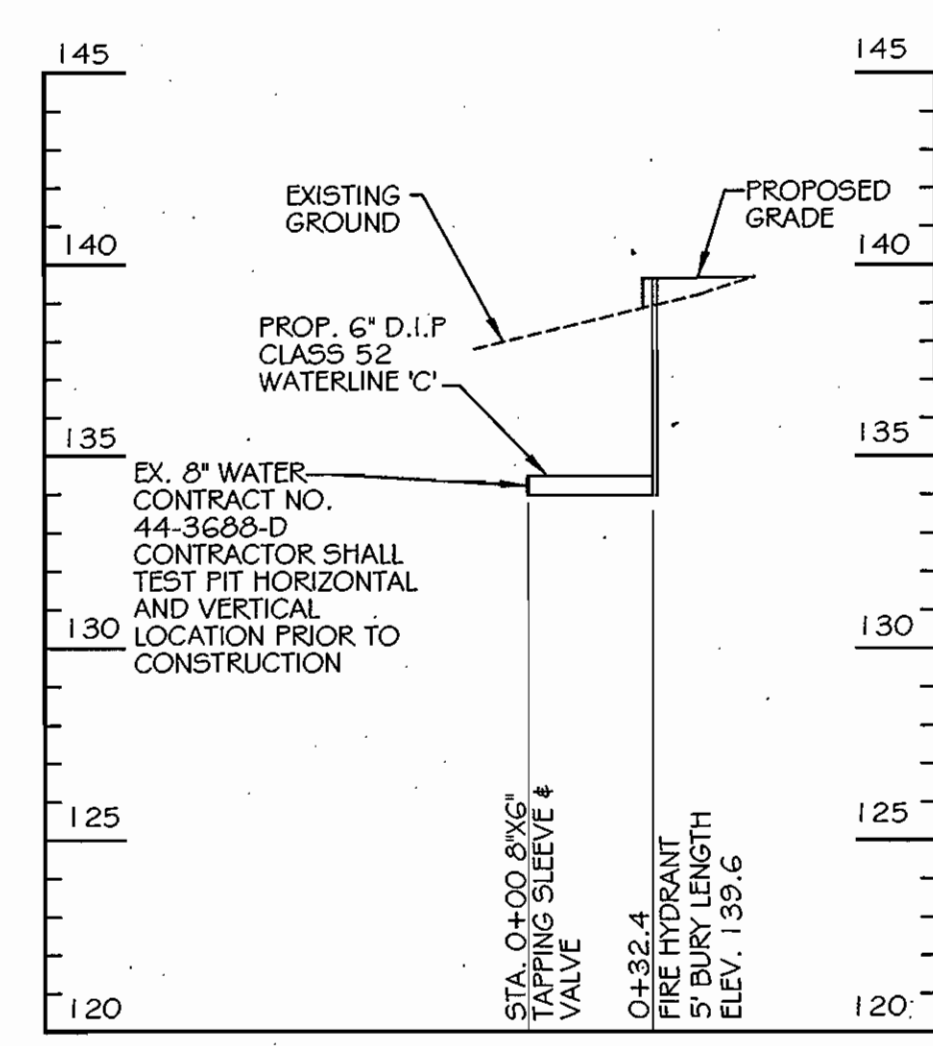
PROJECT # 01-042698  
PERMIT ISSUE  
CONSTRUCTION ISSUE  
**WS-1**



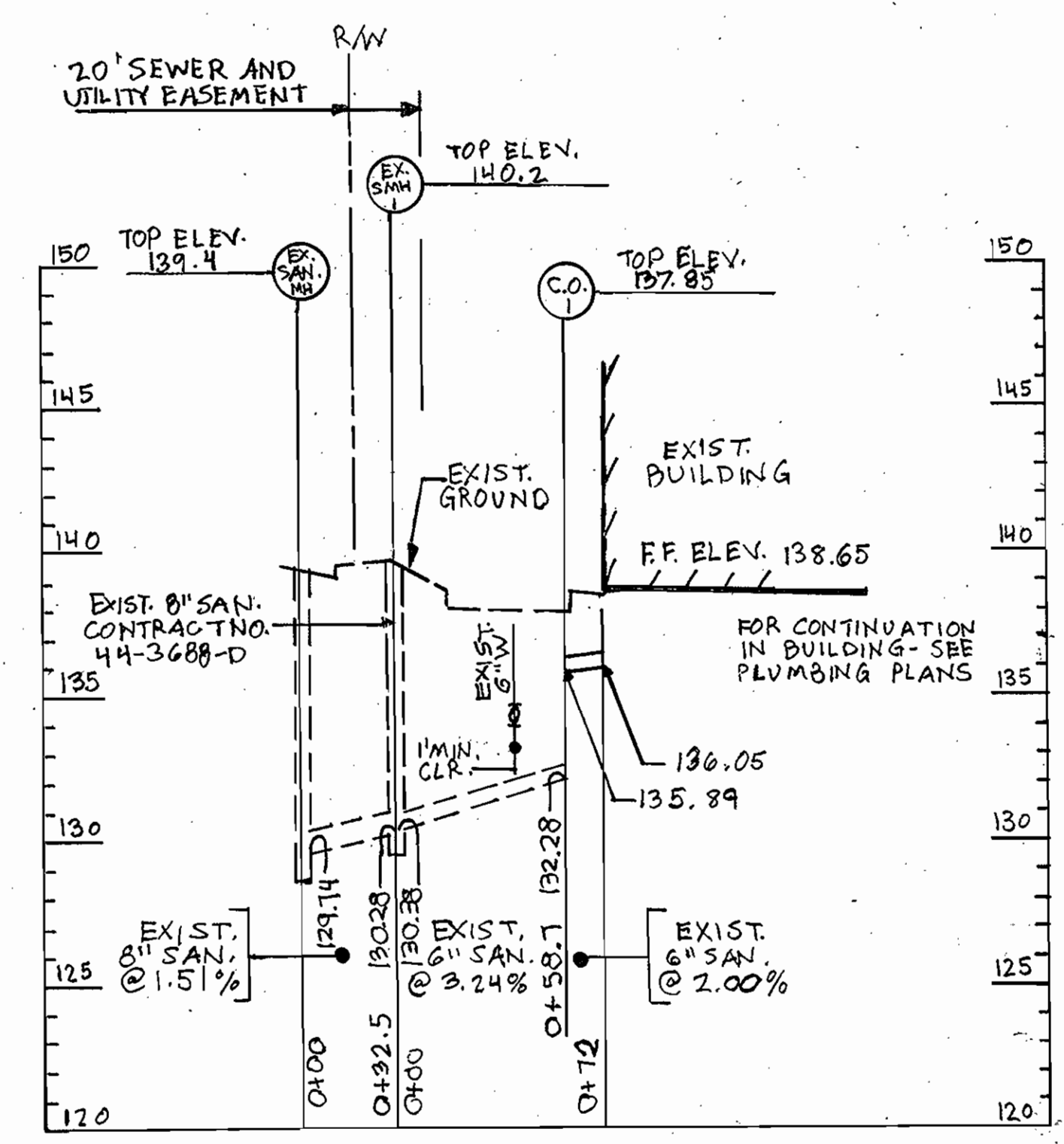
**WATERLINE 'A' PROFILE**  
SCALE: HORIZ. 1" = 50'  
VERT. 1" = 5'



**WATERLINE 'B' PROFILE**  
SCALE: HORIZ. 1" = 50'  
VERT. 1" = 5'



**WATERLINE 'C' PROFILE**  
SCALE: HORIZ. 1" = 50'  
VERT. 1" = 5'



**SANITARY PROFILE**  
SCALE: HORIZ. 1" = 50'  
VERT. 1" = 5'

HOWARD SOIL CONSERVATION DISTRICT,  
REVIEWED FOR HOWARD SOIL CONSERVATION DISTRICT  
AND MEETS TECHNICAL REQUIREMENTS  
*Jim Meyer* 8/15/05  
NATURAL RESOURCES CONSERVATION DISTRICT  
DATE  
THIS PLAN IS APPROVED FOR SOIL EROSION AND SEDIMENT  
CONTROL BY THE HOWARD SOIL CONSERVATION DISTRICT  
*John R. Robertson* 8/15/05  
HOWARD SOIL CONSERVATION DISTRICT  
DATE  
EROSION CONTROL MEASURES FOR THIS CONTRACT WILL BE  
IMPLEMENTED IN ACCORDANCE WITH SECTION 219 OF THE  
HOWARD COUNTY STANDARD SPECIFICATIONS AND AS PER THE  
SITE DEVELOPMENT PLANS SDP-05-088.



8-15-05

DEPARTMENT OF PUBLIC WORKS  
HOWARD COUNTY, MARYLAND  
*Ruth Berman* 8-15-05  
CHIEF, BUREAU OF UTILITIES  
DATE

DEPARTMENT OF PLANNING AND ZONING  
HOWARD COUNTY, MARYLAND  
*John R. Robertson* 8/15/05  
CHIEF, DEVELOPMENT ENGINEERING DIVISION  
DATE

**KCI TECHNOLOGIES**  
ENGINEERS  
PLANNERS  
SCIENTISTS  
CONSTRUCTION MANAGERS  
10 NORTH PARK DRIVE  
HUNT VALLEY, MD 21030  
PHONE (410) 316-7800  
FAX (410) 316-7817  
www.kci.com

**OBRECHT PROPERTIES, LLC**  
4475 Deereco Road, Suite 200  
Timonium, MD 21093  
410-561-8888  
Fax 410-561-2367

**COLIMORE GALLOW ARCHITECTS**  
1240 Key Highway  
Baltimore, MD 21230  
TEL 410.752.3720  
FAX 410.752.4823  
colimoregallow.com

NO.	REVISIONS DESCRIPTION	DATE
1	AS-BUILT DATA	10/20/00
2	ADDED SEWER PROFILE & REVISED THE BSM'T ON THE WATERLINE 'A' PROFILE	6/12/07

**WATER PROFILES**  
600 SCALE MAP NO. 37 BLOCK 22

**DORSEY BUSINESS PARK, PARCEL E-1**  
**MARYLAND HOSPITAL ASSOCIATION**  
**BUILDING NO. 2**  
**CONTRACT NO. 44-4297-D**  
6820 DEERPATH ROAD, ELK RIDGE, MD 21075  
1ST ELECTION DISTRICT HOWARD COUNTY, MARYLAND  
PARCEL 634  
DATE: JULY 22, 2005  
SCALE: AS SHOWN  
SHEET: 2 OF 2

PROJECT: 01-042698  
PERMIT ISSUE:  
CONSTRUCTION ISSUE:  
**WS-2**