

GENERAL NOTES

PART I

- APPROXIMATE LOCATION OF EXISTING MAINS ARE SHOWN. THE CONTRACTOR SHALL TAKE ALL NECESSARY PRECAUTIONS TO PROTECT EXISTING MAINS AND SERVICES AND MAINTAIN UNINTERRUPTED SERVICE. ANY DAMAGE INCURRED SHALL BE REPAIRED IMMEDIATELY TO THE SATISFACTION OF THE ENGINEER AT THE CONTRACTOR'S EXPENSE.
- TOPOGRAPHIC FIELD SURVEYS WERE PERFORMED BY A COMBINATION OF HICKS ENGINEERING CO., INC. ON FEB. 1995 AND SUPPLEMENTED BY A FIELD SURVEY BY VOGEL & ASSOCIATES, INC., DATED NOVEMBER 1996 AND NOVEMBER 1998.
- HORIZONTAL AND VERTICAL SURVEY CONTROLS:
THE COORDINATES SHOWN ON THE DRAWINGS ARE BASED ON MARYLAND STATE REFERENCE SYSTEM AND '83/81 AS PROJECTED BY HOWARD COUNTY GEODETIC CONTROL STATIONS NO. 42E3, NO. 42E4.
ALL VERTICAL CONTROLS ARE BASED ON NAVD'88. VERTICAL CONTROLS PROVIDED ON DRAWINGS ARE:
GEODETIC SURVEY CONTROL 42E3 (ELEV. 306.522 FT.)
BRASS DISC SET ON TOP OF A CONCRETE MONUMENT, 13.0' SOUTH OF RT32W, EAST OF GUILFORD ROAD.
GEODETIC SURVEY CONTROL 42E4 (ELEV. 337.610 FT.)
BRASS DISC SET ON TOP OF A CONCRETE MONUMENT, 20.1' SOUTH OF RT32W, EAST OF RAMP TO US95 OFF OF RT32E.
- ALL PIPE ELEVATIONS SHOWN ARE INVERT ELEVATIONS UNLESS OTHERWISE NOTED.
- CLEAR ALL UTILITIES BY A MINIMUM OF 12 INCHES. CLEAR ALL POLES BY 5'-0" MINIMUM OR TUNNEL AS REQUIRED UNLESS OTHERWISE NOTED. THE OWNER HAS CONTACTED THE UTILITY COMPANIES AND HAS MADE ARRANGEMENTS FOR BRACING OF POLES AS SHOWN ON DRAWINGS. IN THE EVENT THE CONTRACTOR'S WORK REQUIRES THE BRACING OF ADDITIONAL POLES, ANY COST INCURRED BY THE OWNER FOR BRACING OF ADDITIONAL POLES OR DAMAGES SHALL BE DEDUCTED FROM MONIES OWED THE CONTRACTOR. THE CONTRACTOR SHALL COORDINATE WITH THE UTILITY COMPANIES TO SCHEDULE THE BRACING OF THE POLES.
- FOR DETAILS NOT SHOWN ON THE DRAWINGS, AND FOR MATERIALS AND CONSTRUCTION METHODS USE, HOWARD COUNTY DESIGN MANUAL, VOLUME IV, STANDARD SPECIFICATIONS AND DETAILS FOR CONSTRUCTION (LATEST EDITION). THE CONTRACTOR SHALL HAVE A COPY OF VOLUME IV ON THE JOB.
- WHERE TEST PITS HAVE BEEN MADE ON EXISTING UTILITIES, THEY ARE NOTED BY THE SYMBOL AT THE LOCATION OF THE TEST PIT. A NOTES OR NOTES CONTAINING THE RESULTS OF THE TEST PIT OR PITS IS INCLUDED ON THE DRAWINGS. EXISTING UTILITIES IN THE VICINITY OF THE PROPOSED WORK FOR WHICH TEST PITS HAVE NOT BEEN DUG SHALL BE LOCATED BY THE CONTRACTOR TWO WEEKS IN ADVANCE OF CONSTRUCTION OPERATION AT HIS OWN EXPENSE.
- THE CONTRACTOR SHALL NOTIFY THE FOLLOWING UTILITY COMPANIES OR AGENCIES AT LEAST FIVE WORKING DAYS BEFORE STARTING WORK SHOWN THESE PLANS:
AT & T.....1-800-252-1133
BGE (CONTRACTOR SERVICE).....410-850-4620
BGE (EMERGENCY).....410-685-1400
BUREAU OF UTILITIES.....410-313-4900
COLONIAL PIPELINE CO.....410-795-1390
MISS UTILITY.....1-800-257-7777
STATE HIGHWAY ADMINISTRATION.....410-531-5533
VERIZON.....1-800-743-0033/410-224-9210

- TREES AND SHRUBS ARE TO BE PROTECTED FROM DAMAGE TO THE MAXIMUM EXTENT. TREES AND SHRUBS LOCATED WITHIN THE CONSTRUCTION STRIP ARE NOT TO BE REMOVED OR DAMAGED BY THE CONTRACTOR.
- THE CONTRACTOR SHALL REMOVE TREES, STUMPS AND ROOTS ALONG THE LINE OF EXCAVATION. PAYMENT FOR SUCH REMOVAL SHALL BE INCLUDED IN THE UNIT PRICE BID FOR THE CONSTRUCTION OF THE MAIN.
- THE CONTRACTOR SHALL NOTIFY THE BUREAU OF HIGHWAYS, HOWARD COUNTY, AT (410) 313-7450 AT LEAST FIVE WORKING DAYS BEFORE ANY OPEN CUTTING OR BORING/JACKING OF ANY COUNTY ROAD FOR LAYING WATER/SEWER MAINS OR HOUSE CONNECTIONS. THE APPROVAL OF THESE DRAWINGS WILL CONSTITUTE COMPLIANCE WITH DPW REQUIREMENTS PER SECTION 18.114(a) OF THE HOWARD COUNTY CODE.

PART II - WATER

- ALL WATER MAINS TO BE D.I.P. CLASS 52 UNLESS OTHERWISE NOTED.
- TOPS OF ALL WATER MAINS TO HAVE A MINIMUM OF 3'-6" COVER UNLESS OTHERWISE NOTED.
- VALVES ADJACENT TO TEES SHALL BE STRAPPED TO TEES.
- ALL FITTINGS SHALL BE BUTTRESSED OR ANCHORED WITH CONCRETE IN ACCORDANCE WITH THE STANDARD DETAILS UNLESS OTHERWISE PROVIDED FOR ON THE DRAWINGS.
- FIRE HYDRANTS SHALL BE SET TO THE BURY LINE ELEVATIONS SHOWN ON THE DRAWINGS. ALL FIRE HYDRANTS SHALL BE INSTALLED IN ACCORDANCE WITH STANDARD DETAILS. THE SOIL AROUND THE FIRE HYDRANT SHALL BE COMPACTED IN ACCORDANCE WITH SECTION 1000 AND 1005 OF THE STANDARD SPECIFICATIONS.
- THE CONTRACTOR SHALL NOT OPERATE ANY WATER MAIN VALVES ON THE EXISTING WATER SYSTEM.

PART III - SEWER

- ALL SEWER MAINS SHALL BE D.I.P. OR P.V.C. UNLESS OTHERWISE NOTED.
- ALL MANHOLES SHALL BE 4'-0" INSIDE DIAMETER UNLESS OTHERWISE NOTED.
- FORCE MAINS SHALL BE D.I.P. ONLY.
- MANHOLES SHOWN WITH 12" AND 16" WALLS ARE FOR BRICK MANHOLES ONLY.
- MANHOLES DESIGNATED W.T. IN PLAN AND PROFILE SHALL HAVE WATERTIGHT FRAME AND COVER, STANDARD DETAIL G5.52. WHERE WATERTIGHT MANHOLE FRAME AND COVERS ARE USED, SET TOP OF FRAME 1'-6" ABOVE FINISHED GRADE UNLESS OTHERWISE NOTED ON THE DRAWINGS.
- HOUSE(S) WITH THE SYMBOL "C.N.S." INDICATES THAT CELLAR CANNOT BE SERVED.

SEDIMENT CONTROL MEASURES WILL BE IMPLEMENTED IN ACCORDANCE WITH SECTION 219 OF THE SPECIFICATIONS AND WITH SITE DEVELOPMENT PLAN SDP-05-11

THIS DEVELOPMENT IS APPROVED FOR SOIL EROSION AND SEDIMENT CONTROL BY THE HOWARD COUNTY SOIL CONSERVATION DISTRICT.

REVIEWED FOR HOWARD COUNTY SOIL CONSERVATION DISTRICT AND MEETS TECHNICAL REQUIREMENTS.

John P. Robertson
SOIL CONSERVATION DISTRICT

8/15/05
DATE

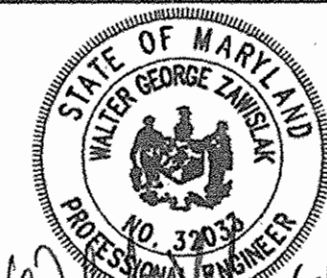
Jim Meyer
SOIL CONSERVATION DISTRICT

8/15/05
DATE

DEPARTMENT OF PUBLIC WORKS
HOWARD COUNTY, MARYLAND

DEPARTMENT OF PLANNING & ZONING
HOWARD COUNTY, MARYLAND

ROBERT H. VOGEL ENGINEERING, INC.
ENGINEERS • SURVEYORS • PLANNERS
8407 MAIN STREET TEL: 410.461.7666
ELLCOTT CITY, MD 21043 FAX: 410.461.8961



DES: DZ
DRN: DZ
CHK: WGZ

DATE:	JULY 2005	BY:	KCL	NO.	1	REVISION:	AS-BUILT DATA SHOWN	DATE:	12/12/02
60' SCALE MAP NO.:	42	BLOCK NO.:	16						

FINAL WATER AND SEWER COVER SHEET

FIRST BAPTIST CHURCH OF GUILFORD CONTRACT NO. 24-4282-D

TAX MAP 42 BLOCK 16
6TH ELECTION DISTRICT

PARCEL 227 & 9
HOWARD COUNTY, MARYLAND

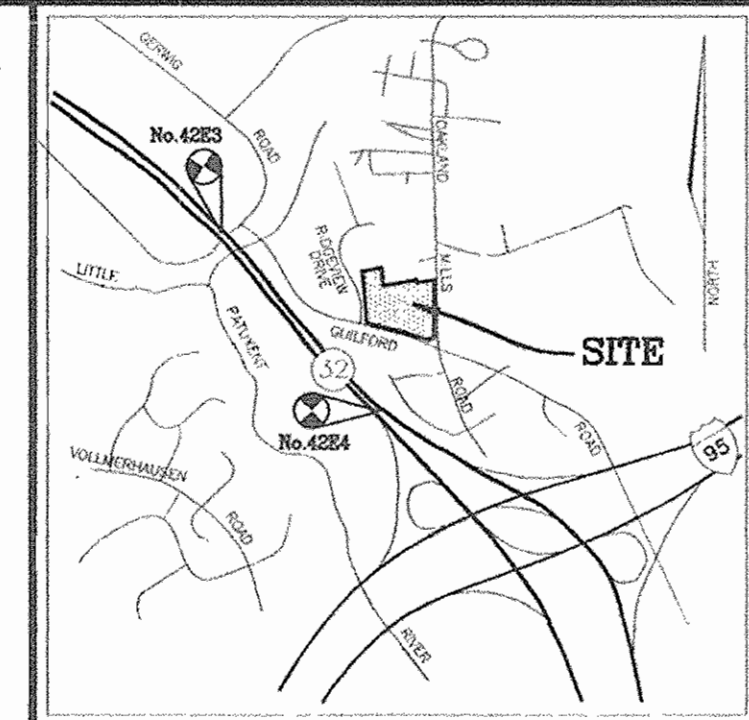
SCALE AS SHOWN

SHEET 1 OF 3

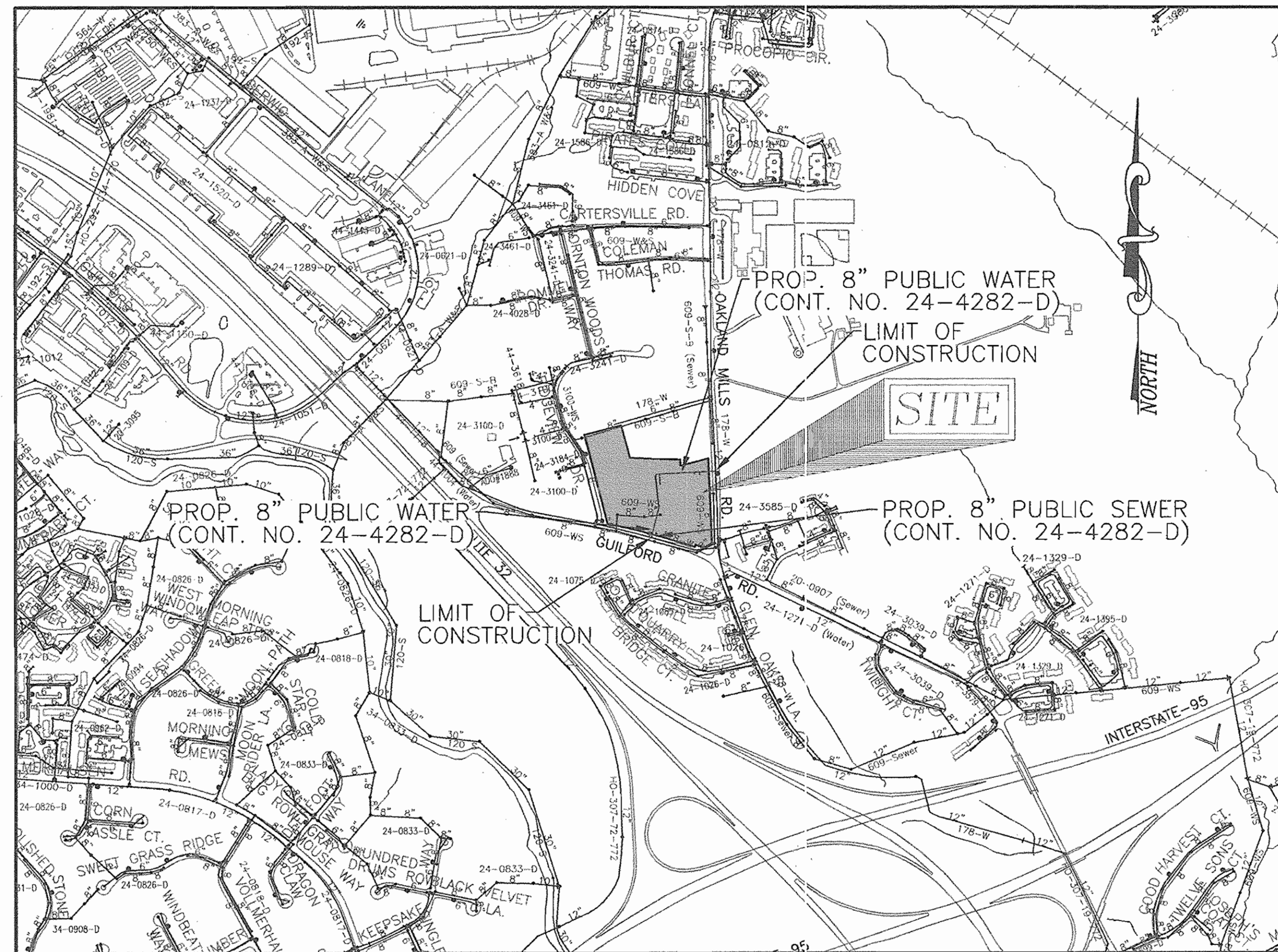
FIRST BAPTIST CHURCH OF GUILFORD FINAL PUBLIC WATER AND SEWER CONSTRUCTION PLAN HOWARD COUNTY, MARYLAND CONTRACT NO. 24-4282-D

BENCHMARKS

HOWARD COUNTY CONTROL TRAVERSE NO. 42E3
N 548528.833 E 1357894.405 ELEV. 306.552
HOWARD COUNTY CONTROL TRAVERSE NO. 42E4
N 544850.922 E 1359466.467 ELEV. 337.610



VICINITY MAP
SCALE: 1"=2000'



WATER CODE:	E14
SEWER CODE:	5200400
TEST GRADIENT:	700

TYPE OF BUILDING:	CHURCH
NO. OF LOTS/PARCELS:	1
NO. OF WATER HOUSE CONNECTIONS:	0
NO. OF SEWER HOUSE CONNECTIONS:	0
DRAINAGE AREA:	LITTLE PATUXENT RIVER
TREATMENT PLANT:	GUILFORD

QUANTITIES

NAME OF UTILITY CONTRACTOR :				
SURVEY AND DRAFTING DIVISION AS-BUILT DATE :				
ITEMS	QUANTITIES ESTIMATED	AS-BUILT		
		QUANTITIES	TYPE	MANUFACTURER/SUPPLIER
WATER				
8" x 8" TAPPING SLEEVE	2 EA.	2 EA	S.S.	FORD / HUGHES
8" WATER	790 LF.	790	DIP.CLSE	GRIFAN PIPE "
6" WATER	95 LF.	80	DIP.CLSE	"
8" VALVE	3 EA.	3	D.I.P.	KENNEDY
6" VALVE	3 EA.	3	D.I.P.	"
8" x 8" TEE	1 EA.	1	D.I.P.	SIGMA
8" x 6" TEE	3 EA.	3	D.I.P.	"
FIRE HYDRANT	3 EA.	3	D.I.P.	KENNEDY
8" CAP & BUTTRESS	1 EA.	1	D.I.P.	SIGMA
8" - 1/8 BEND	2 EA.	2	D.I.P.	SIGMA
8" - 1/16 BEND	1 EA.	1	D.I.P.	SIGMA
SEWER				
MANHOLES	1 EA.	1		CONTRACTOR'S PRECAST CORP.
8" PVC SEWER	55 LF.	55	SDR-35	BELAIR ROAD SUPPLY

Maryland State Grid Meridian

E 1,359,650
N 545,350

E 1,359,650
N 546,200

E-1,360,250
N 546,200

DISCONNECT EX. 8" SEWER FROM EX. SMH-8386-A SEAL OPENING, AND FILL IN CHANNEL.

EX. 8" SEWER (CONT. 609-W&S) TO BE ABANDONED IN PLACE FROM EX. SMH 8412 TO EX. 8386-A (SEE DETAIL SHEET 3)

REMOVE EX. FIRE HYDRANT FROM CONT. 178-W AT MAIN AND FLOOR. RETURN FIRE HYDRANT TO HOWARD COUNTY BUREAU OF UTILITIES. TO BE COMPLETED UNDER THIS CONTRACT.

PROP. 8" TAPPING SLEEVE AND VALVE (CONT. 24-4282-D) CONNECT TO EXISTING 8" PUBLIC WATER (CONT. 178-W) STA. 7+79.81

F.H. VAL TO F.H. VAL 152'
F.H. VAL TO 8" VAL 55.0'
F.H. VAL TO 8" VAL 100.0'
F.H. VAL TO 8" VAL 100.0'
T.S. F.V. TO SMH 100 (CONT. 24-4282-D) 37.0'

PROP. 20" PUBLIC SEWER AND UTILITY EASEMENT

EX. SMH#8410 TO BE ABANDONED IN PLACE (SEE DETAIL SHEET 3)

EX. SMH#8410 TO BE ABANDONED IN PLACE (SEE DETAIL SHEET 3)

EX. 8" SEWER (CONT. 609-W&S) TO BE ABANDONED IN PLACE FROM EX. SMH 8412 TO EX. 8386-A (SEE DETAIL SHEET 3)

EX. SMH#8411 TO BE ABANDONED IN PLACE (SEE DETAIL SHEET 3)

EX. 8" SEWER (CONT. 609-W&S) TO BE ABANDONED IN PLACE FROM EX. SMH 8412 TO EX. 8386-A (SEE DETAIL SHEET 3)

EX. SMH#8412 TO BE ABANDONED IN PLACE (SEE DETAIL SHEET 3)

EX. CHURCH (TO REMAIN) EX. F.F. # 381.00

EX. CLEANOUT TO BE ABANDONED

EX. 6" PRIVATE SEWER (TO BE ABANDONED) (SEE DETAIL SHEET 3)

DISCONNECT EX. 8" SEWER FROM EX. SMH-8390, SEAL OPENING, AND FILL IN CHANNEL.

EX. 8" SEWER (CONT. 609-W&S)

PROP. 8" TAPPING SLEEVE AND VALVE (CONT. 24-4282-D) CONNECT TO EXISTING 8" PUBLIC WATER (CONT. 178-W) STA. 0+00

TAX MAP 42, P/O PARCEL 426
ASHIE IBRAHIM A. & WF
L.847 / F.680
LOT 2
ZONED: R-12

TAX MAP 42, P/O PARCEL 426
FIRST BAPTIST CHURCH
GUILFORD INC.
L.4937 / F.47
LOT 1
ZONED: R-SI

TAX MAP 42, P/O PARCEL 46
JOHN & CATHERINE MYERS
L.1175 / F.109
ZONED: R-12

PROPOSED CHURCH
F.F. # 381.00

PLAN VIEW
SCALE: 1"=50'

8" VAL (1434) TO F.H. 362'
8" VAL (1434) TO F.H. VAL 35.5'
FIRE HYDRANT TO F.H. VAL 13.0'
FIRE HYDRANT TO 8" VAL (0400) 100.0'
FIRE HYDRANT VAL TO 8" VAL (0100) 20.6'

SEDIMENT CONTROL MEASURES WILL BE IMPLEMENTED IN ACCORDANCE WITH SECTION 219 OF THE SPECIFICATIONS AND WITH SITE DEVELOPMENT PLAN SDP-05-11

THIS DEVELOPMENT IS APPROVED FOR SOIL EROSION AND SEDIMENT CONTROL BY THE HOWARD COUNTY SOIL CONSERVATION DISTRICT.

REVIEWED FOR HOWARD COUNTY SOIL CONSERVATION DISTRICT AND MEETS TECHNICAL REQUIREMENTS.

John R. Roberts
SOIL CONSERVATION DISTRICT

8/5/05
DATE

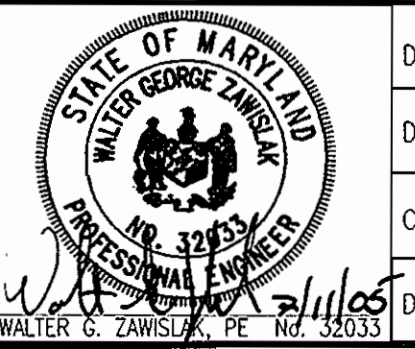
Jim Meyer
SOIL CONSERVATION DISTRICT

8/5/05
DATE

DEPARTMENT OF PUBLIC WORKS
HOWARD COUNTY, MARYLAND

DEPARTMENT OF PLANNING & ZONING
HOWARD COUNTY, MARYLAND

ROBERT H. VOGEL ENGINEERING, INC.
ENGINEERS • SURVEYORS • PLANNERS
8407 MAIN STREET TEL: 410-481-7666
ELLICOTT CITY, MD 21104 FAX: 410-481-8961



DES:	DZ				
DRN:	DZ				
CHK:	WGZ				
DATE:	JULY 2005	BY:	K.C.I.	ASBUILT DATA SHOWN	12/2/06
REVISION:		NO.			

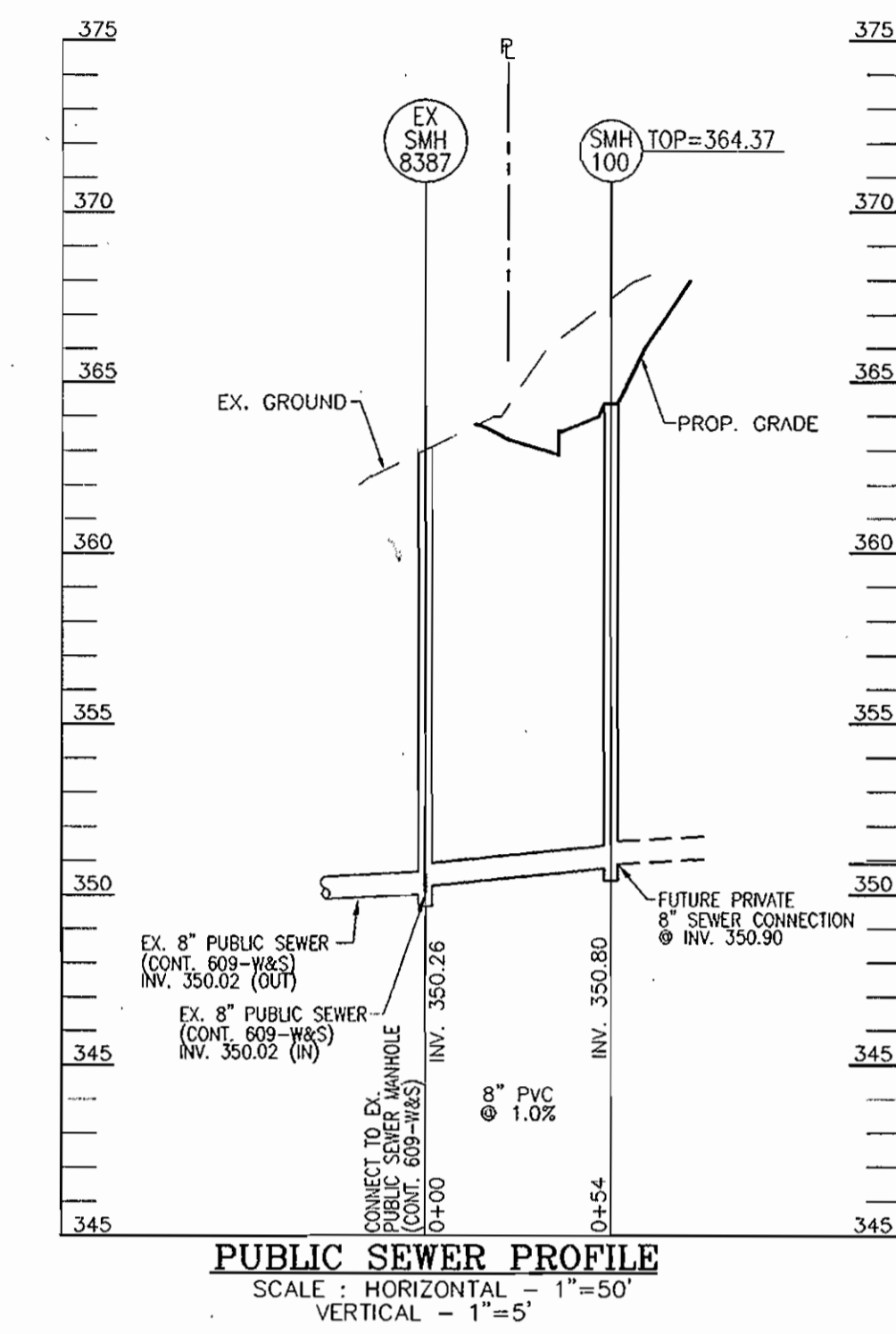
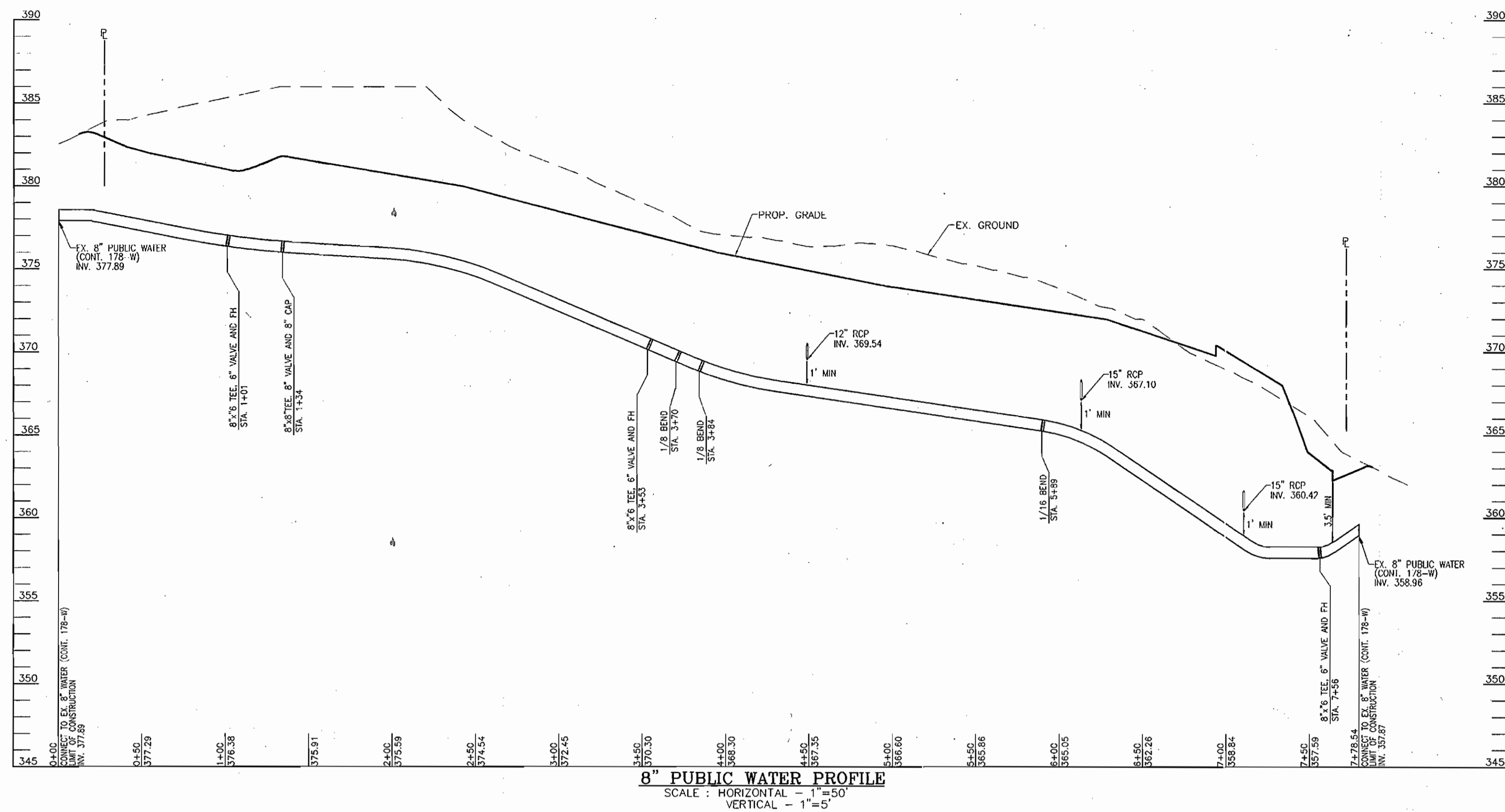
FINAL WATER AND SEWER
PLAN VIEW

FIRST BAPTIST
CHURCH OF GUILFORD
CONTRACT NO. 24-4282-D

SCALE AS SHOWN
SHEET 2 OF 3

OWNER/DEVELOPER
FIRST BAPTIST CHURCH OF GUILFORD
7504 OAKLAND MILLS RD
COI UMBIA, MD 21046

TAX MAP 42 BLOCK 16
6TH ELECTION DISTRICT
PARCEL 227 & 9
HOWARD COUNTY, MARYLAND



SEWER MANHOLE LOCATION CHART

NO.	TYPE	LOCATION	TOP ELEV.
SMH-100	4\"/>		

8-INCH SEWER INSTALLATION
 CONTRACT 24-4282-D
 AND 8-INCH SEWER ABANDONMENT
 CONTRACT 609-WAS

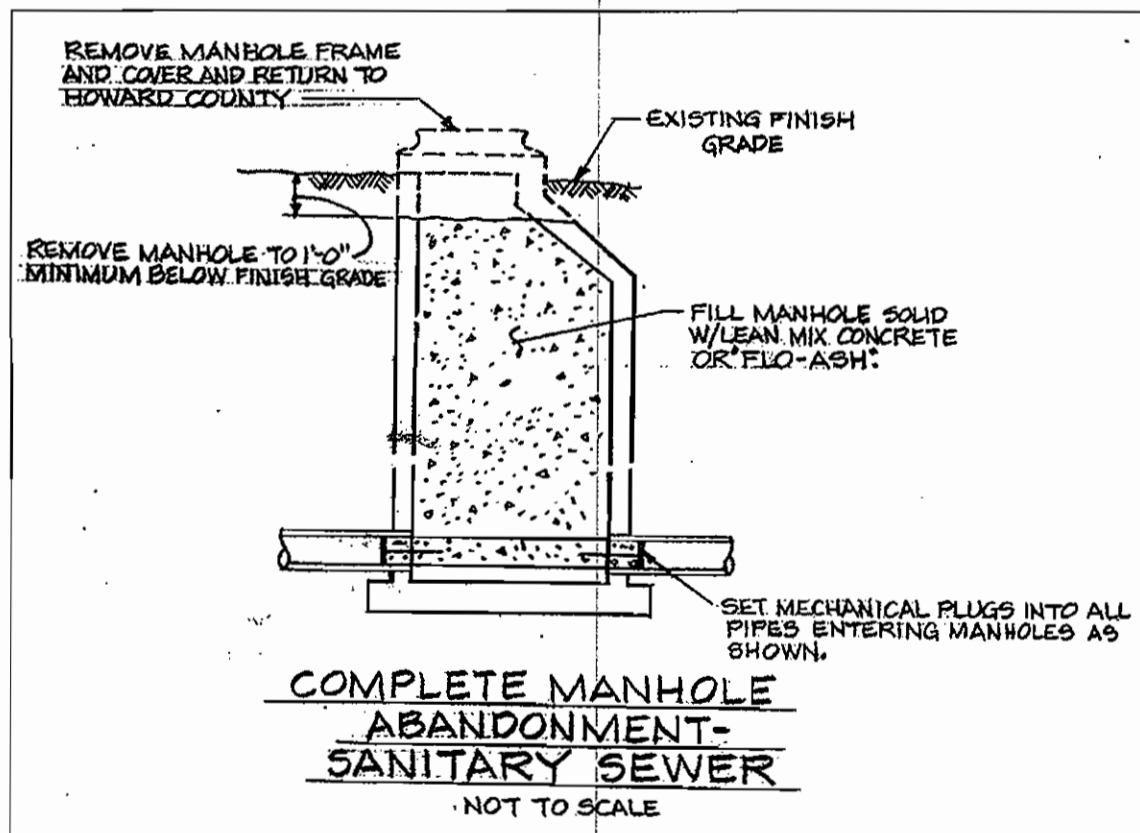
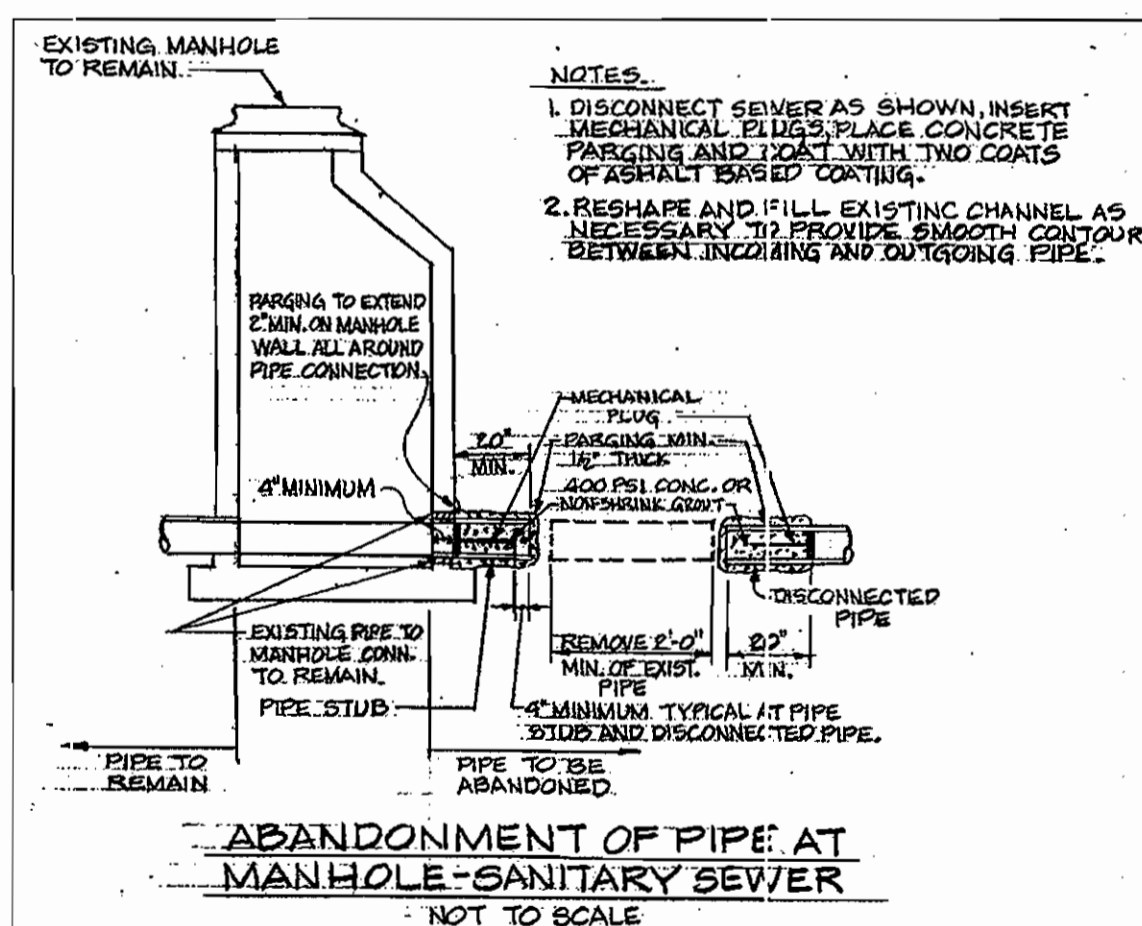
Sequence of Construction

All aspects of work including materials, methods and timing shall be coordinated with and approved by the Department of Public Works prior to initiation. The Contractor shall be approved by the Department of Public Works prior to starting work.

Attached is a general sequence of work to be followed by the Contractor. A detailed scope of work shall be developed by the Contractor and submitted to the County for review and approval prior to starting any work. All work within the existing County easement shall be completed within 10 calendar days from the notice to proceed.

General Sequence of Work

- Construct new 8-inch sewer and manhole from SMH 100 to existing SMH-8387.
- Disconnect existing 8-inch outgoing sewer in existing SMH 8412 and plug with 12-inch long mechanical plug. Remove manhole frame and cover of existing SMH 8412 and return to Howard County. Remove manhole to 1-foot minimum below finish grade. Fill existing SMH 8412 with lean mix concrete or "lo-ash". (See details, this sheet)
- Disconnect existing 8-inch incoming and outgoing sewer in existing SMH 8411 and plug with 12-inch long mechanical plug. Remove manhole frame and cover of existing SMH 8411 and return to Howard County. Remove manhole to 1-foot minimum below finish grade. Fill existing SMH 8411 with lean mix concrete or "lo-ash". (See details, this sheet)
- Disconnect existing 8-inch incoming and outgoing sewer in existing SMH 8410 and plug with 12-inch long mechanical plug. Remove manhole frame and cover of existing SMH 8410 and return to Howard County. Remove manhole to 1-foot minimum below finish grade. Fill existing SMH 8410 with lean mix concrete or "lo-ash". (See details, this sheet)
- Disconnect existing 8-inch incoming sewer in existing SMH 8386-A and plug with 12-inch long mechanical plug. Seal opening in manhole, and fill in the channel.
- Once construction of new sewer and proper abandonment of existing sewer is complete, return site to good condition.



SEDIMENT CONTROL MEASURES WILL BE IMPLEMENTED IN ACCORDANCE WITH SECTION 219 OF THE SPECIFICATIONS AND WITH SITE DEVELOPMENT PLAN SDP-05-11

THIS DEVELOPMENT IS APPROVED FOR SOIL EROSION AND SEDIMENT CONTROL BY THE HOWARD COUNTY SOIL CONSERVATION DISTRICT.

John L. Reintse 8/3/05
 SOIL CONSERVATION DISTRICT DATE

REVIEWED FOR HOWARD COUNTY SOIL CONSERVATION DISTRICT AND MEETS TECHNICAL REQUIREMENTS.

Jim Meyer 8/3/05
 U.S. SOIL CONSERVATION DISTRICT DATE

OWNER/DEVELOPER
 FIRST BAPTIST CHURCH OF GUILFORD
 7504 OAKLAND MILLS RD
 COLUMBIA, MD 21046

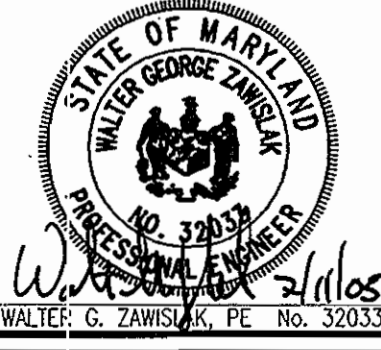
DEPARTMENT OF PUBLIC WORKS
 HOWARD COUNTY, MARYLAND

Ruth Bunn 7-29-05
 CHIEF, BUREAU OF UTILITIES DATE

DEPARTMENT OF PLANNING & ZONING
 HOWARD COUNTY, MARYLAND

Mike Dammann 8/16/05
 CHIEF, DEVELOPMENT ENGINEERING DIVISION DATE

ROBERT H. VOGEL ENGINEERING, INC.
 ENGINEERS • SURVEYORS • PLANNERS
 8407 MAIN STREET TEL: 410.461.7666
 ELLICOTT CITY, MD 21043 FAX: 410.461.8961



DES:	DZ				
DRN:	DZ				
CHK:	WCZ				
DATE:	JULY 2005	BY:	NO.	REVISION	DATE

FINAL WATER AND SEWER PROFILES

FIRST BAPTIST CHURCH OF GUILFORD
 CONTRACT NO. 24-4282-D

SCALE AS SHOWN
 SHEET 3 OF 3

TAX MAP 42 BLOCK 16
 6TH ELECTION DISTRICT
 PARCEL 227 & 9
 HOWARD COUNTY, MARYLAND