

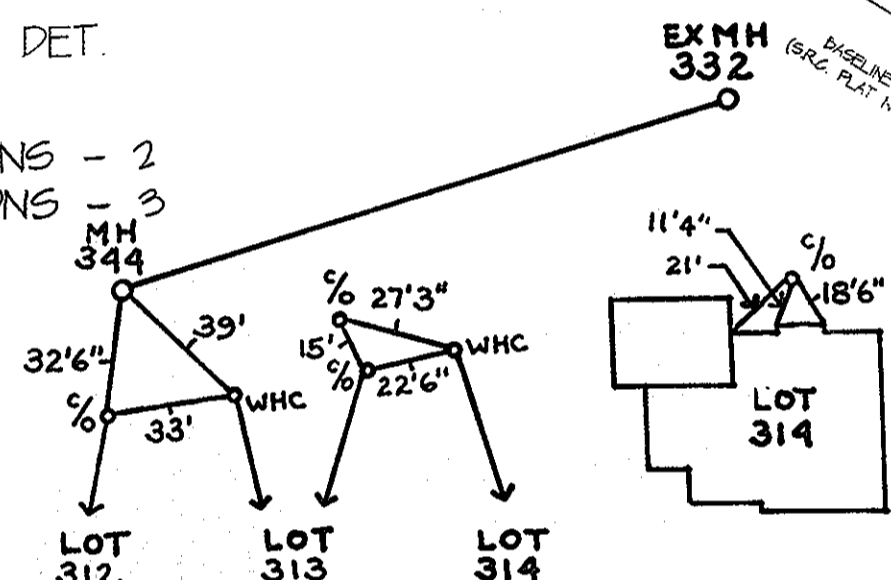
NOTES:
 1. CONTRACTOR SHALL TEST PIT EX 12" WM TO VERIFY LOCATION AND ELEVATION PRIOR TO BEGINNING CONSTRUCTION.
 2. CONTRACTOR SHALL REMOVE AND REPLACE EXISTING ROADWAY PAVEMENT, CONCRETE SIDEWALK, CURB AND GUTTER AND DRIVEWAY PAVEMENT IN ACCORDANCE WITH HOWARD COUNTY STANDARD DETAILS AND SPECS. FOR CONSTRUCTION (LATEST EDITION VOL. IV)

NOTE: FIBER OPTIC CABLE THE ADJUSTING OF THE FIBER OPTIC CABLE MUST BE INSPECTED BY THE COMPLIANCE OFFICER FOR VERIZON INC. THE CONTRACTOR MUST CONTACT THE VERIZON INSPECTOR AT 1-800-925-7244 PRIOR TO WORKING ON ADJUSTING THE FIBER OPTIC CABLE.

EXISTING HOUSE CONNECTION NOTE
 THE EXISTING SHC AND THE EXISTING WHC MUST BE ABANDONED AT THE MAIN (OR MANHOLE) AND THE OPENING PLUGGED PER HOW. CO. STD'S. AND SPECS.

SANITARY HOUSE CONNECTIONS SHALL BE DUCTILE IRON PIPE (D.I.P.) ANKA CL51 IN THE R/W OF STONEHOUSE ROAD.

TYPE OF BUILDING - SINGLE FAM DET.
 NO OF LOTS/PARCELS - 2
 NO OF WATER HOUSE CONNECTIONS - 2
 NO OF SEWER HOUSE CONNECTIONS - 3
 DRAINAGE AREA - PATAPSCO TREATMENT PLANT - PATAPSCO



QUANTITIES				
ITEMS	QUANTITIES ESTIMATED	AS-BUILT		
		QUANTITIES	TYPE	MANUFACTURER/SUPPLIER
8" SEWER MAIN	167 LF	167 LF	DIP	AMERICAN
MANHOLE	1 EA	1 EA	PRECAST	FREDERICK PRECAST
4" SHC	200 LF	194 LF	DIP	AMERICAN
1" WHC	48 LF	48 LF	COPPER	

4" SHC INVERT TABLE				
8" SEWER STATION	INV. @ STA. @ SEWER	INV. @ 1.00% @ 1.4" CL.	LOT#	
MH 344	451.68	452.44	LOT 312	
H11	451.96	453.24	LOT 313	
H89	455.23	*455.43	LOT 314	

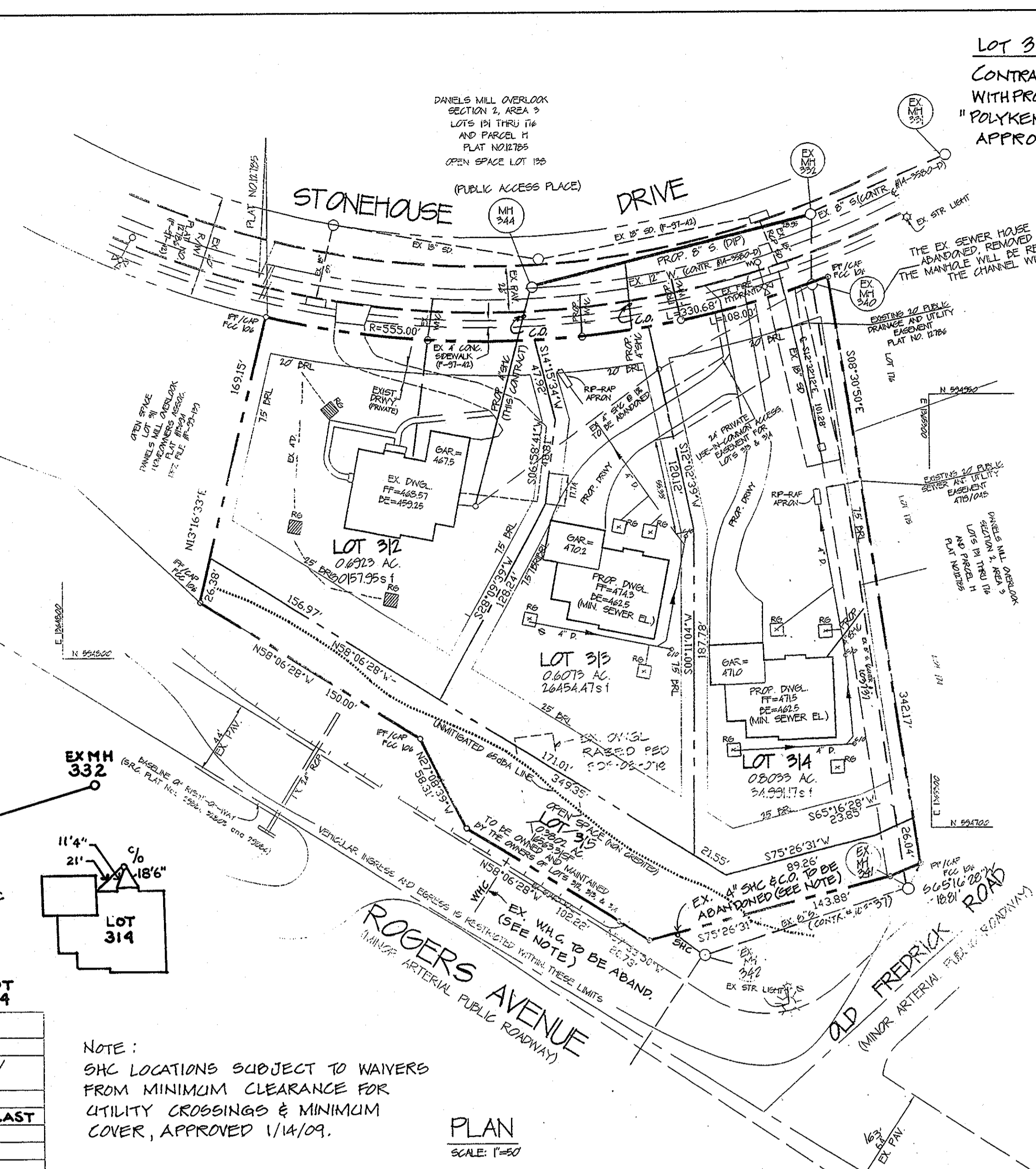
*SLOPE = 2.00%

OWNER: KALPANA MATHY, 2624 STONEHOUSE DR, ELICOTT CITY, MD 21043
 DEVELOPER: VIKING DEVELOPMENT CORPORATION, 215 WINDRIVER DR, SYKESVILLE, MD 21784-2500, TEL: 410-971-3186

REVIEWED FOR HOWARD COUNTY SOIL CONSERVATION DISTRICT AND MEETS TECHNICAL REQUIREMENTS.
 Jim Meyer 8/18/05
 NATURAL RESOURCE CONSERVATION SERVICE DATE
 THIS DEVELOPMENT PLAN IS APPROVED FOR SOIL EROSION AND SEDIMENT CONTROL BY THE HOWARD COUNTY SOIL CONSERVATION DISTRICT FOR F-09-216
 John K. Ralston 9/18/05
 HOWARD COUNTY SOIL CONSERVATION DISTRICT DATE

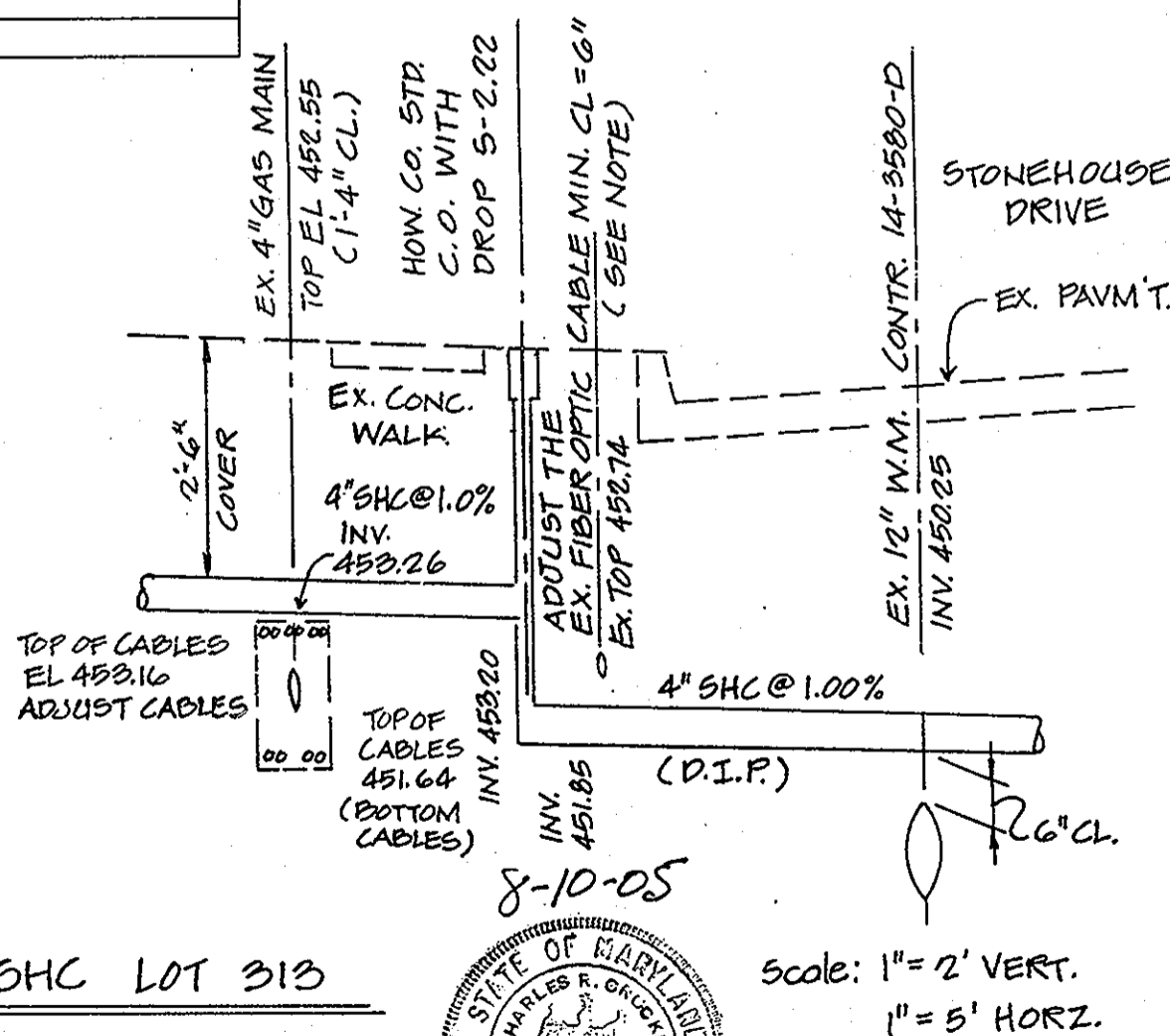
DEPARTMENT OF PUBLIC WORKS
 HOWARD COUNTY, MARYLAND
 Ralston, Benjamin 9-1-05
 CHIEF, BUREAU OF UTILITIES DATE

DEPARTMENT OF PLANNING & ZONING
 HOWARD COUNTY, MARYLAND
 [Signature] 9/18/05
 CHIEF, DEVELOPMENT ENGINEERING DIVISION DATE

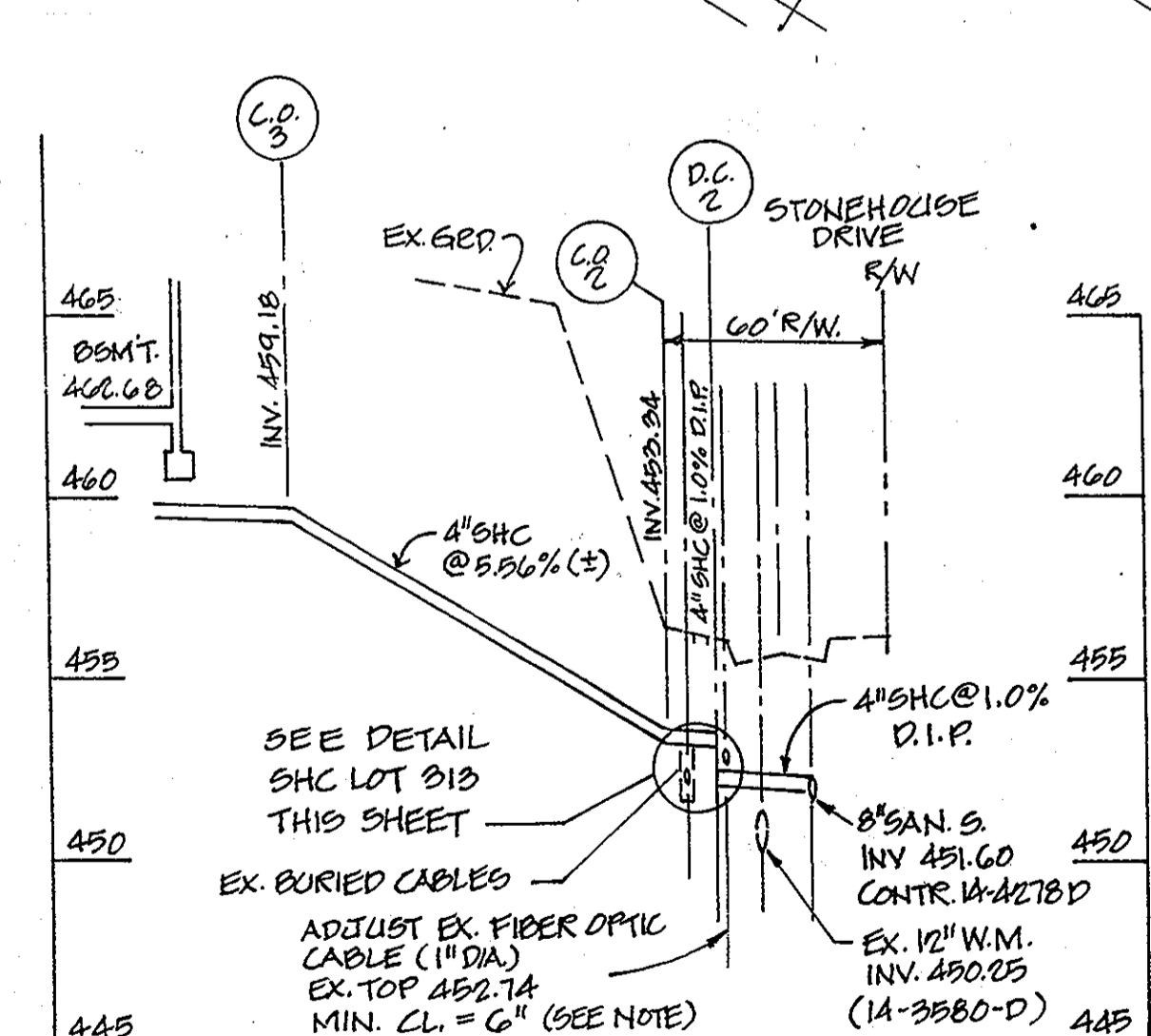


NOTE: SHC LOCATIONS SUBJECT TO WAIVERS FROM MINIMUM CLEARANCE FOR UTILITY CROSSINGS & MINIMUM COVER, APPROVED 1/14/09.

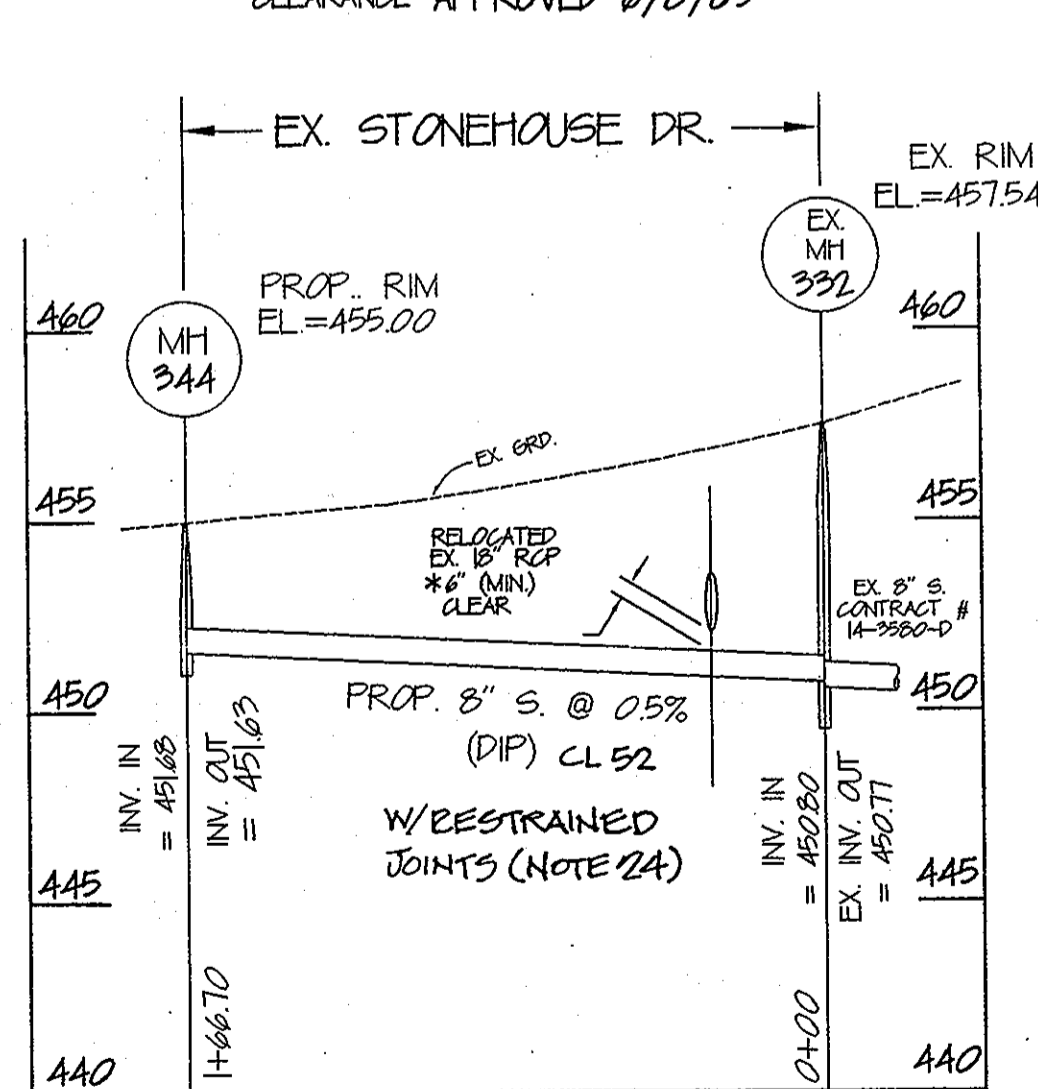
PLAN SCALE: 1"=50'



DETAIL SHC LOT 313 SCALE: 1"=2' VERT. 1"=5' HORIZ.

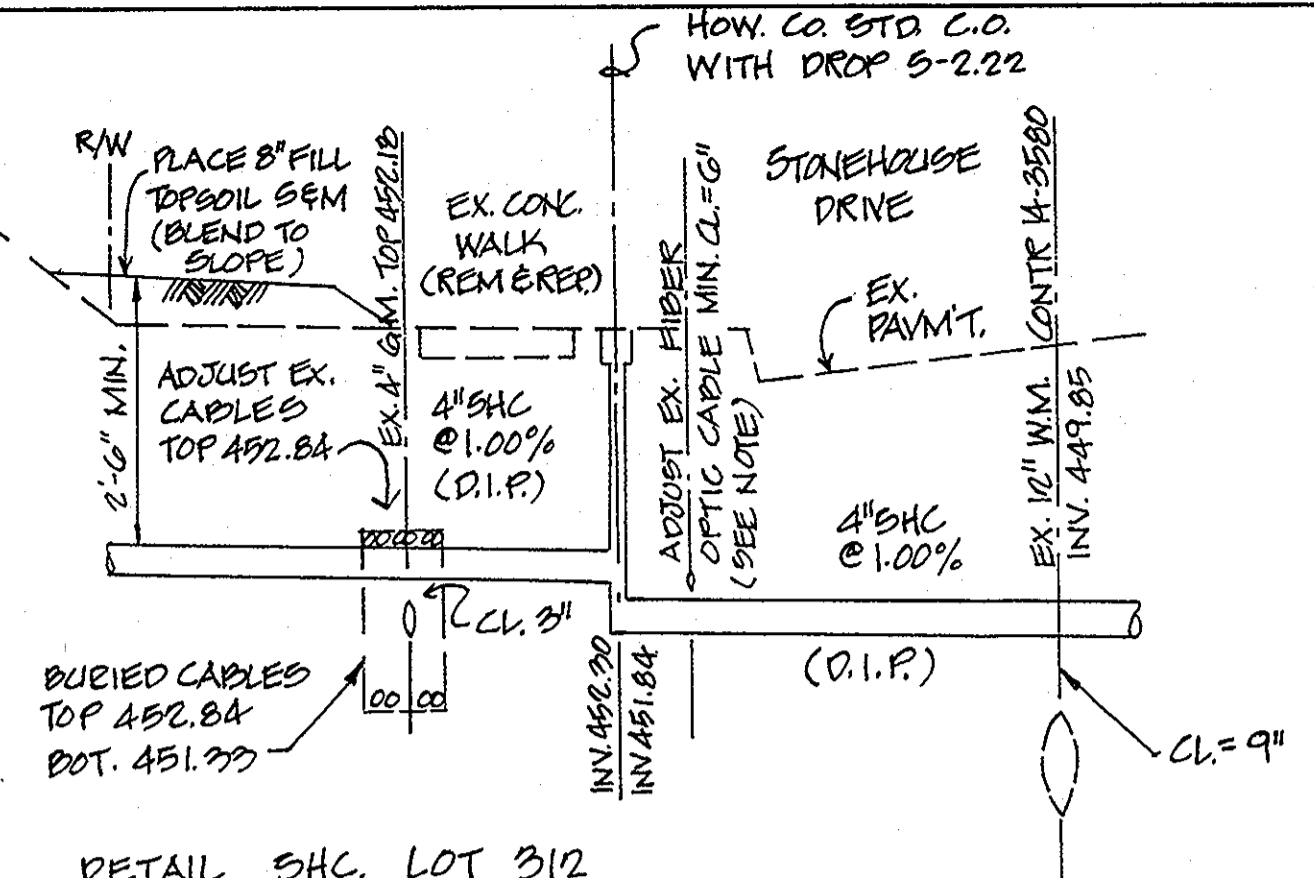


SANITARY HSE. CONNECTION LOT 313 PROFILE SCALE: 1"=5' VERT. 1"=50' HORIZ.

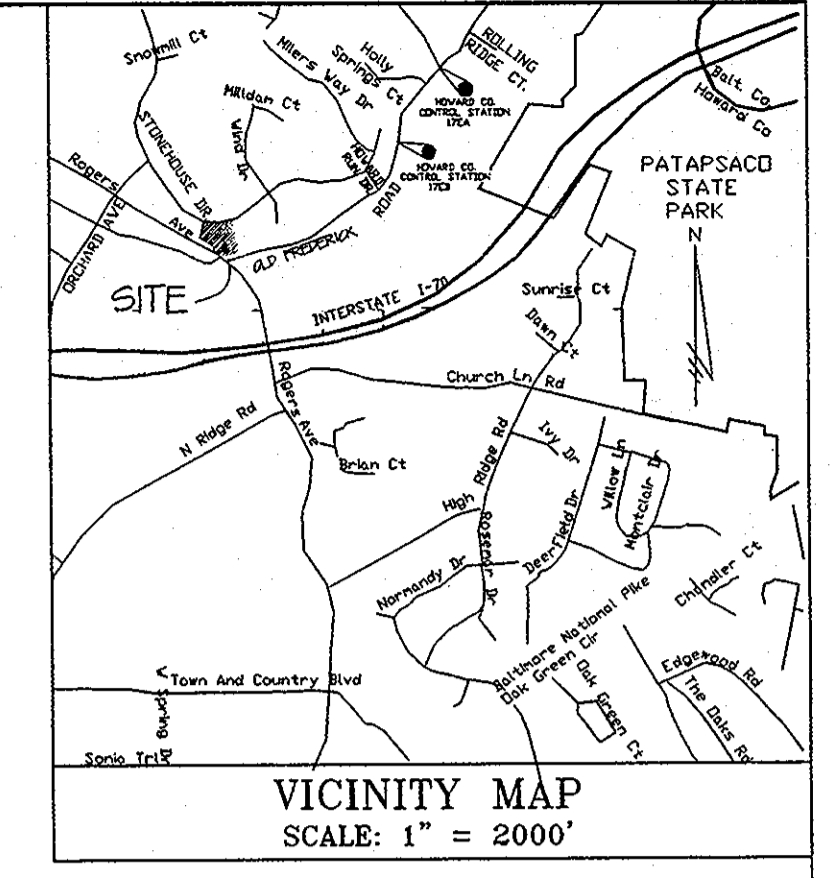


SANITARY SEWER PROFILE SCALE: VERT. 1"=5' HORIZ. 1"=50'

LOT 312 AND LOT 313
 CONTRACTOR SHALL WRAP SHC WITH PROTECTIVE CORROSION BARRIER "POLYKEN TAPE WRAP, 85 MIL" OR APPROVED EQUAL.



DETAIL SHC LOT 312 SCALE: 1"=2' VERT. 1"=5' HORIZ.



WATER CODE: H02
 SEWER CODE: 1454850
 TEST GRADIENT: 780

- GENERAL NOTES:
- APPROXIMATE LOCATION OF EXISTING MAINS ARE SHOWN. THE CONTRACTOR SHALL TAKE ALL NECESSARY PRECAUTIONS TO PROTECT EXISTING MAINS AND SERVICES AND MAINTAIN UNINTERRUPTED SERVICE. ANY DAMAGE INCURRED SHALL BE REPAIRED IMMEDIATELY TO THE SATISFACTION OF THE ENGINEER AT THE CONTRACTOR'S EXPENSE.
 - TOPOGRAPHIC FIELD SURVEYS WERE PERFORMED ON 6/02 & 6/04 BY CHARLES R. CROCKEN AND ASSOC., INC.
 - THE COORDINATES SHOWN ON THE DRAWINGS ARE BASED ON MARYLAND STATE REFERENCE SYSTEM NAD 83/91 AS PRECISED BY HOWARD COUNTY GEODETIC CONTROL STATIONS. THEA AND NOTED.
 - ALL VERTICAL CONTROLS ARE BASED ON NAVD 83. VERTICAL CONTROLS PROVIDED ON THE DRAWINGS ARE THE RM ELEVATIONS OF SAN SEWER MANHOLE NO. 332 ELEV=457.54 AND SAN SEWER MANHOLE NO. 340 ELEV=458.25.
 - ALL PIPE ELEVATIONS SHOWN ARE INVERT ELEVATIONS UNLESS OTHERWISE NOTED ON PLANS.
 - ALL UTILITIES BY MINIMUM OF 12 INCHES CLEAR ALL POLES BY 5'-0" MINIMUM OR TUNNEL AS REQUIRED UNLESS OTHERWISE NOTED. THE OWNER HAS CONTRACTED THE UTILITY COMPANIES AND HAS ARRANGEMENTS FOR DRAGING OF POLES AS SHOWN ON THE DRAWINGS. IN THE EVENT THE CONTRACTOR'S WORK REQUIRES THE DRAGING OF ADDITIONAL POLES OR DAMAGES SHALL BE DEDUCTED FROM MONEY OWED THE CONTRACTOR. THE CONTRACTOR SHALL COORDINATE WITH THE UTILITY COMPANIES TO SCHEDULE THE DRAGING OF THE POLES.
 - FOR DETAILS NOT SHOWN ON THE DRAWINGS, AND FOR MATERIALS AND CONSTRUCTION METHODS USE HOWARD COUNTY DESIGN MANUAL VOLUME IV, STANDARD SPECIFICATIONS AND DETAILS FOR CONSTRUCTION (LATEST EDITION). THE CONTRACTOR SHALL HAVE A COPY OF VOLUME IV ON THE JOB.
 - WHERE TEST PITS HAVE BEEN MADE ON EXISTING UTILITIES THEY ARE NOTED BY THE SYMBOL [Symbol] AT THE LOCATION OF THE TEST PIT. A NOTE OR NOTES CONTAINING THE RESULTS OF THE TEST PIT OR PITS ARE INCLUDED ON THE DRAWINGS. EXISTING UTILITIES IN THE VICINITY OF THE PROPOSED WORK FOR WHICH TEST PITS HAVE NOT BEEN DUG SHALL BE LOCATED BY THE CONTRACTOR TWO WEEKS IN ADVANCE OF CONSTRUCTION OPERATIONS AT HIS OWN EXPENSE.
 - CONTRACTORS SHALL NOTIFY THE FOLLOWING UTILITY COMPANIES OR AGENCIES AT LEAST FIVE WORKING DAYS BEFORE STARTING WORK ON THESE PLANS:
 AT&T 1-800-252-1939
 BSEE CONSTRUCTION 410-250-4600
 BSEE EMERGENCY 410-250-4600
 BUREAU OF UTILITIES 410-319-4200
 COLONIAL PIPELINE CO. 410-758-1920
 MISS UTILITY 1-800-251-7771
 STATES HIGHWAY ADMINISTRATION 410-591-8999
 VERIZON 1-800-743-0293 1/40-224-3140
 - TREES AND SHRUBS ARE TO BE PROTECTED FROM DAMAGE TO MAXIMUM EXTENT. TREES AND SHRUBS LOCATED WITHIN THE CONSTRUCTION STRIP ARE NOT TO BE REMOVED OR DAMAGED BY THE CONTRACTOR.
 - CONTRACTOR SHALL REMOVE TREES, STUMPS AND ROOTS ALONG LINE OF EXCAVATION. PAYMENT FOR SUCH REMOVAL SHALL BE INCLUDED IN THE UNIT PRICE BID FOR CONSTRUCTION OF MAIN.
 - THE CONTRACTOR SHALL NOTIFY THE BUREAU OF HIGHWAYS, HOWARD COUNTY, AT 410-319-7450 AT LEAST FIVE(5) WORKING DAYS BEFORE ANY OPEN CUT OF ANY COUNTY ROAD OR BORING/JACKING OF ANY COUNTY ROAD FOR LAYING WATER/SEWER MAINS OR HOUSE CONNECTIONS. THE APPROVAL OF THESE DRAWINGS WILL CONSTITUTE COMPLIANCE WITH DRY REQUIREMENTS PER SECTION 181(c) OF THE HOWARD COUNTY CODE.
 - ALL WATER MAINS SHALL BE DIP, CLASS 52 UNLESS OTHERWISE NOTED.
 - TOPS OF ALL WATER MAINS SHALL HAVE A MINIMUM OF 3'-6" COVER UNLESS OTHERWISE NOTED.
 - VALVES ADJACENT TO TEES SHALL BE STRAPPED TO TEES.
 - ALL FITTINGS SHALL BE BUTTRESSED OR ANCHORED WITH CONCRETE IN ACCORDANCE WITH THE STANDARD DETAILS UNLESS OTHERWISE PROVIDED FOR ON THE DRAWINGS.
 - FIRE HYDRANTS SHALL BE SET TO THE BURY LINE ELEVATIONS SHOWN ON THE DRAWINGS. ALL FIRE HYDRANTS SHALL BE INSTALLED IN ACCORDANCE WITH STANDARD DETAILS. THE SOIL AROUND THE FIRE HYDRANT SHALL BE COMPACTED IN ACCORDANCE WITH SECTION 1000 AND SECTION 1005 OF THE STANDARD SPECIFICATIONS.
 - THE CONTRACTOR SHALL NOT OPERATE ANY WATER MAIN VALVES ON THE EXISTING WATER SYSTEM.
 - ALL WATER HOUSE CONNECTIONS SHALL BE FOR INSIDE METER SETTING UNLESS OTHERWISE NOTED ON PLANS OR IN SPECIFICATIONS.
 - ALL SEWER MAINS SHALL BE DUCTILE IRON PIPE (DIP) UNLESS OTHERWISE NOTED.
 - ALL MANHOLES SHALL BE 4'-0" INSIDE DIAMETER UNLESS OTHERWISE NOTED.
 - MANHOLES SHOWN WITH 12" AND 18" WALLS ARE FOR DRINKMANHOLES ONLY.
 - MANHOLES DESIGNATED W/T IN PLAN AND PROFILE SHALL HAVE WATER TIGHT FRAME AND COVERS, STANDARD DETAIL 6502, WHERE WATER TIGHT MANHOLE FRAMES AND COVERS ARE USED. SET TOP OF FRAME 1'-0" ABOVE FINISHED GRADE UNLESS OTHERWISE NOTED ON THE DRAWINGS.
 - HOUSE(S) WITH THE SYMBOL "CNS" INDICATES THAT CELLAR CANNOT BE SERVED.
 - THE SEWER CROSSING SHALL BE RESTRAINED DUCTILE IRON PIPE FROM MANHOLE TO MANHOLE CLASS 52.
 - THE SEWER TRENCH SHALL BE BACKFILLED WITH NO. 6 STONE TO THE INVERT OF THE STORM DRAIN. THE STONE BACKFILL SHALL EXTEND TO 10-FOOT ON EITHER SIDE OF THE STORM DRAIN.

DESIGN	CHK	DATE
CHG		
CHG		
CHG		
CHG		

BY	NO.	REVISION	DATE
KCI	1	AS BUILT REVISIONS	10-20-09
CEL	1	ADDED SHC PROFILES & DETAILS	1-21-09

DANIELS MILL OVERLOOK
 LOTS 312, 313 AND 314
 A RESUBDIVISION OF LOT 303, (PLAT # 10445)
 SINGLE FAMILY DETACHED DWELLINGS
 CONTRACT NO. 14-4278D
 SECOND ELECTION DISTRICT, TAX MAP #7, GRID B, P/O PARCEL 547
 HOWARD COUNTY, MARYLAND
 SCALE AS SHOWN
 SHEET 1 OF 1