

# GENERAL NOTES

- Part I**
- Approximate location of existing mains are shown. The contractor shall take all necessary precautions to protect existing mains and services and maintain uninterrupted service. Any damage incurred shall be repaired immediately to the satisfaction of the Engineer at the Contractor's expense.
  - Topographic field surveys were performed on September 2004 by George W. Stephens, Jr. and Assoc.
  - Horizontal and vertical survey controls :  
The coordinates shown on the drawings are based on Maryland State Reference System NAD 27 as projected by Howard County Geodetic Control Stations No. 234401 and No. 2343001.  
All vertical controls are based on NGVD 29. Vertical controls provided on the drawings are (234401) standard concrete monument set flush service. (234301) 3/4" rebar set 0.3' below the surface.
  - All pipe elevations shown are invert elevations unless otherwise noted on the plans.
  - Clear all utilities by a minimum of 12". Clear all poles by 5'-0" minimum or tunnels as required unless otherwise noted. The owner has contacted the utility companies and has made arrangements for bracing of poles as shown on the drawings. In the event the contractor's work requires the bracing of additional poles, any cost incurred by the owner for bracing of additional poles or damages shall be deducted from monies owed the contractor. The contractor shall coordinate with the utility companies to schedule the bracing of the poles.
  - For details not shown on the drawings, and for materials and construction methods, use Howard County Design Manual, Volume IV, Standard Specifications and Detail for Construction (Latest Edition). The contractor shall have a copy of Volume IV on the job.
  - Where test pits have been made on existing utilities, they are noted by the symbol at the location of the test pit. A note or notes containing the results of the test pit or pits is included on the drawings. Existing utilities in the vicinity of the proposed work for which test pits have not been dug shall be located by the contractor two weeks in advance of construction operations at his own expense.
  - The contractor shall notify the following utility companies or agencies at least five working days before starting work shown on these plans:  
AT&T 1-800-252-1133  
BGE (Contractor Services) 410-850-4620  
BGE (Emergency) 410-885-1400  
Bureau of Utilities 410-313-4900  
Colonial Pipeline Co. 410-795-1390  
Miss Utility 1-800-257-7777  
State Highway Administration 410-531-5533  
Verizon 1-800-743-0033 / 410-224-9210
  - Trees and shrubs are to be protected from damage to the maximum extent. Trees and shrubs located within the construction strip are not to be removed or damaged by the contractor.
  - Contractor shall remove trees, stumps and roots along line of excavation. Payment for such removal shall be included in the unit price bid for construction of the main.
  - The contractor shall notify the Bureau of Highways, Howard County, at (410) 313-7450 at least five working days before cutting or boring/jacking of any county road for laying water/sewer mains or house connections. The approval of these drawings will constitute compliance with DPW requirements per Section 18.114(a) of the Howard County Code.

- Part II Water**
- All water mains shall be D.I.P. Class 52 unless otherwise noted.
  - Tops of all water mains to have a minimum of 3'-6" cover unless otherwise noted.
  - Valves adjacent to tees shall be strapped to tees.
  - All fittings shall be buttressed or anchored with concrete in accordance with the Standard Details unless otherwise provided for on the drawings.
  - Fire hydrants shall be set to the bury line elevations shown on the drawings. All fire hydrants shall be installed in accordance with Standard Details. The soil around the fire hydrants shall be compacted in accordance with Section 1000 and Section 1005 of the Standard Specifications.
  - The contractor shall not operate any water main valves on the existing water system.

- Part III Sewer**
- All sewer mains shall be D.I.P. or P.V.C., unless otherwise noted.
  - All manholes shall be 4'-0" inside diameter unless otherwise noted.
  - Force mains shall be D.I.P. only.
  - Manholes shown with 12" and 16" walls are for brick manholes only.
  - Manholes designed W.T. in plan and profile shall have watertight frame and cover, Standard Detail G5.52. Where watertight manhole frames and covers are used, set top of frame 1'-6" above finished grade unless otherwise noted on the drawings.
  - House(s) with the symbol "C.N.S." indicates that the cellar cannot be served.

SEDIMENT CONTROL MEASURES FOR THIS CONTRACT WILL BE IMPLEMENTED IN ACCORDANCE WITH SECTION 219 OF THE STANDARD SPECIFICATIONS, SDP 05-057

THE DEVELOPMENT PLAN IS APPROVED FOR SOIL EROSION AND SEDIMENT CONTROL BY THE HOWARD SOIL CONSERVATION DISTRICT.

APPROVED: *John R. Robertson* 3/24/05  
HOWARD SOIL CONSERVATION DISTRICT DATE

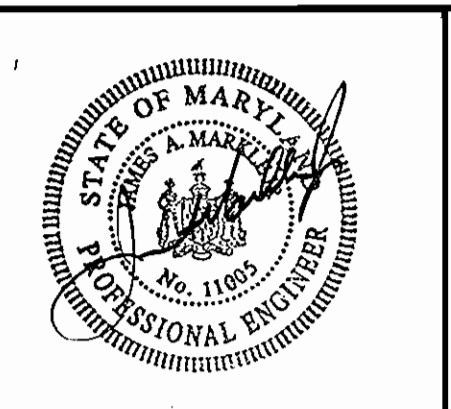
REVIEWED FOR HOWARD SOIL CONSERVATION DISTRICT AND MEETS TECHNICAL REQUIREMENTS.

DEVELOPER / CONTRACTOR / PURCHASER  
**MOR MCGAW ACQUISITIONS, LLC**  
7061 COLUMBIA GATEWAY DRIVE  
COLUMBIA, MARYLAND 21046  
410-280-1400

DEPARTMENT OF PUBLIC WORKS  
HOWARD COUNTY, MARYLAND  
*Richard Bunting* 3-31-05  
CHIEF, BUREAU OF UTILITIES DATE

DEPARTMENT OF PLANNING & ZONING  
HOWARD COUNTY, MARYLAND  
*Michael D. ...* 4/5/05  
CHIEF, DEVELOPMENT ENGINEERING DIVISION DATE

**GEORGE W. STEPHENS, JR. AND ASSOCIATES, INC.**  
Civil Engineers and Land Surveyors  
1020 CROMWELL BRIDGE ROAD  
Towson, Maryland 21286  
(410) 825-8120



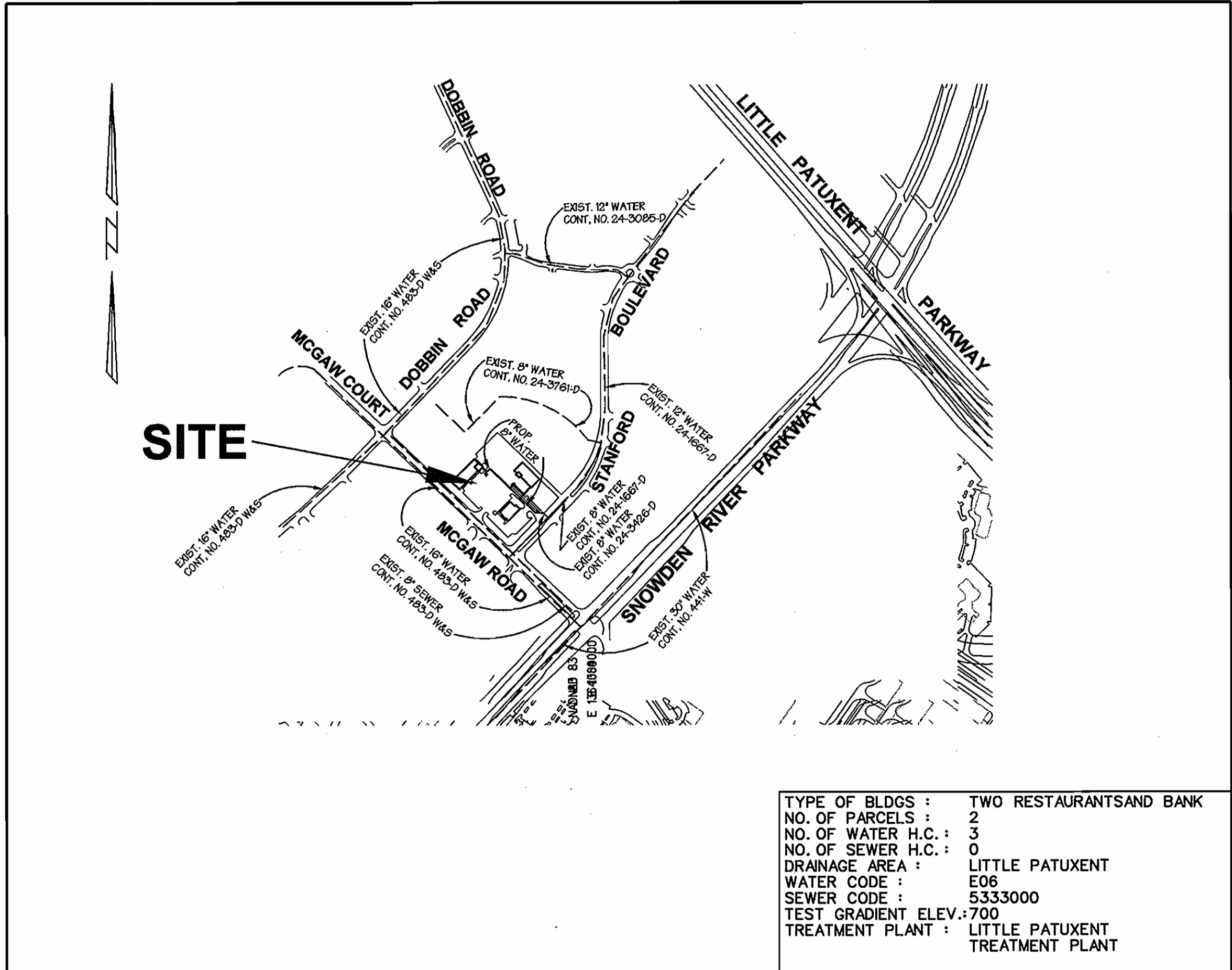
DESIGNED : PRC, KE  
DRAFTED : KE  
CHECKED : PRC

**COVER SHEET,  
GENERAL NOTES & LOCATION MAP**  
CONTRACT NO. 44-4269-D  
600 SCALE MAP NO. 36 BLOCK NO. 23 & 24

**PUBLIC WATER AND SEWER  
COLUMBIA CORPORATE PARK  
PARCELS A-38 & A-39**  
CONTRACT NO. 44-4269-D  
HOWARD COUNTY, MARYLAND  
ELECTION DISTRICT \*06  
NOVEMBER 01, 2004  
SHEET 1 OF 2  
P/N 10383- watertitle.01

## BENCH MARKS:

- BM # 234401 ELEV. 307.49  
STANDARD CONCRETE MONUMENT SET FLUSH SURFACE  
N491333.018 E858206.725
- BM # 2343001 ELEV. 288.24  
3/4" REBAR SET 0.3' BELOW THE SURFACE  
N492140.801 E857226.671



## LOCATION MAP

SCALE : 1" = 600'

## PUBLIC WATER AND SEWER CONSTRUCTION PLANS COLUMBIA CORPORATE PARK PARCELS A-38 AND A-39

6th ELECTION DISTRICT, HOWARD COUNTY, MARYLAND  
CONTRACT NO. 44-4269-D

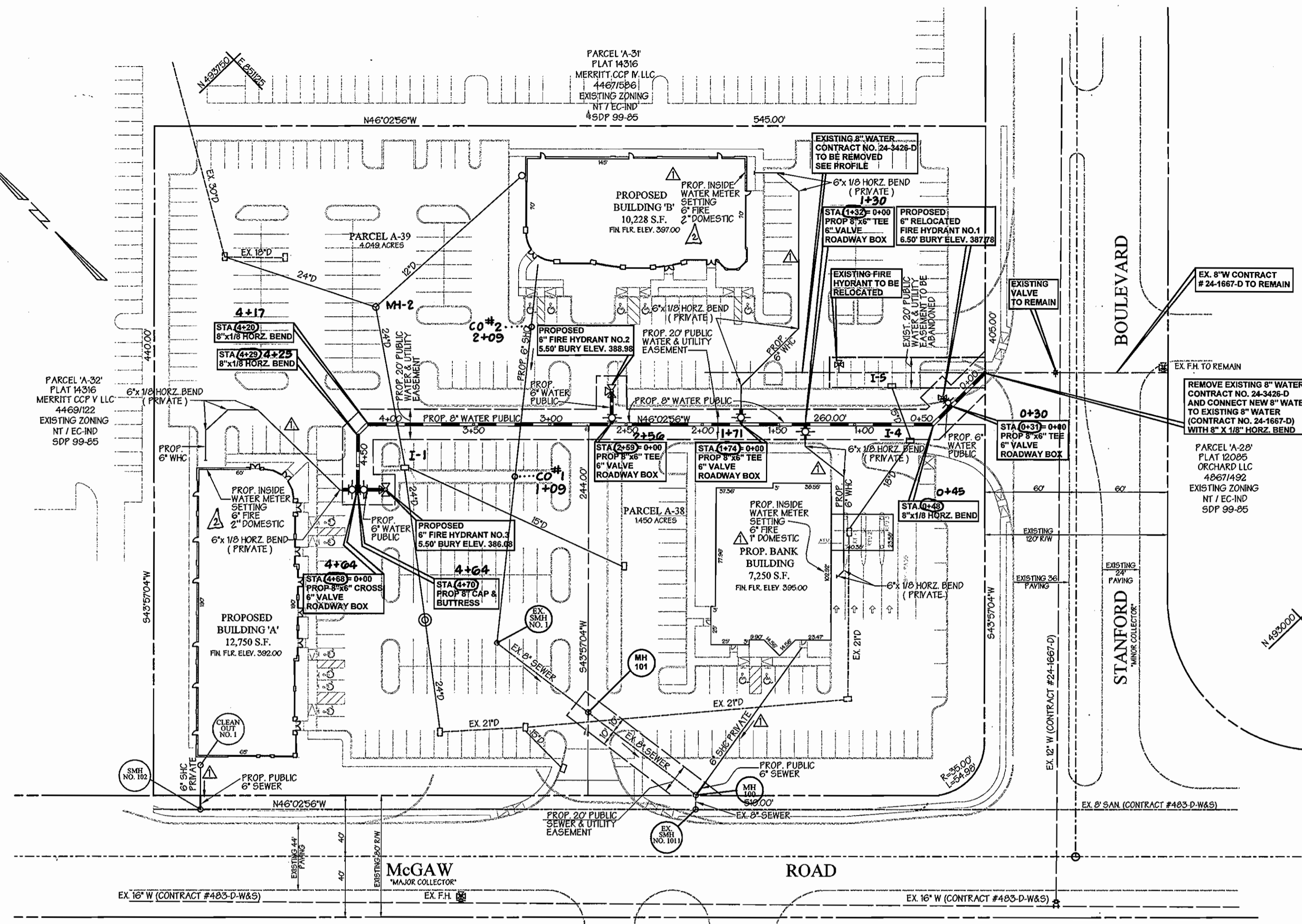
## INDEX OF SHEETS

SHEET NO.	TITLES
1	COVER SHEET, GENERAL NOTES & LOCATION MAP
2	PLAN VIEW AND PROFILES

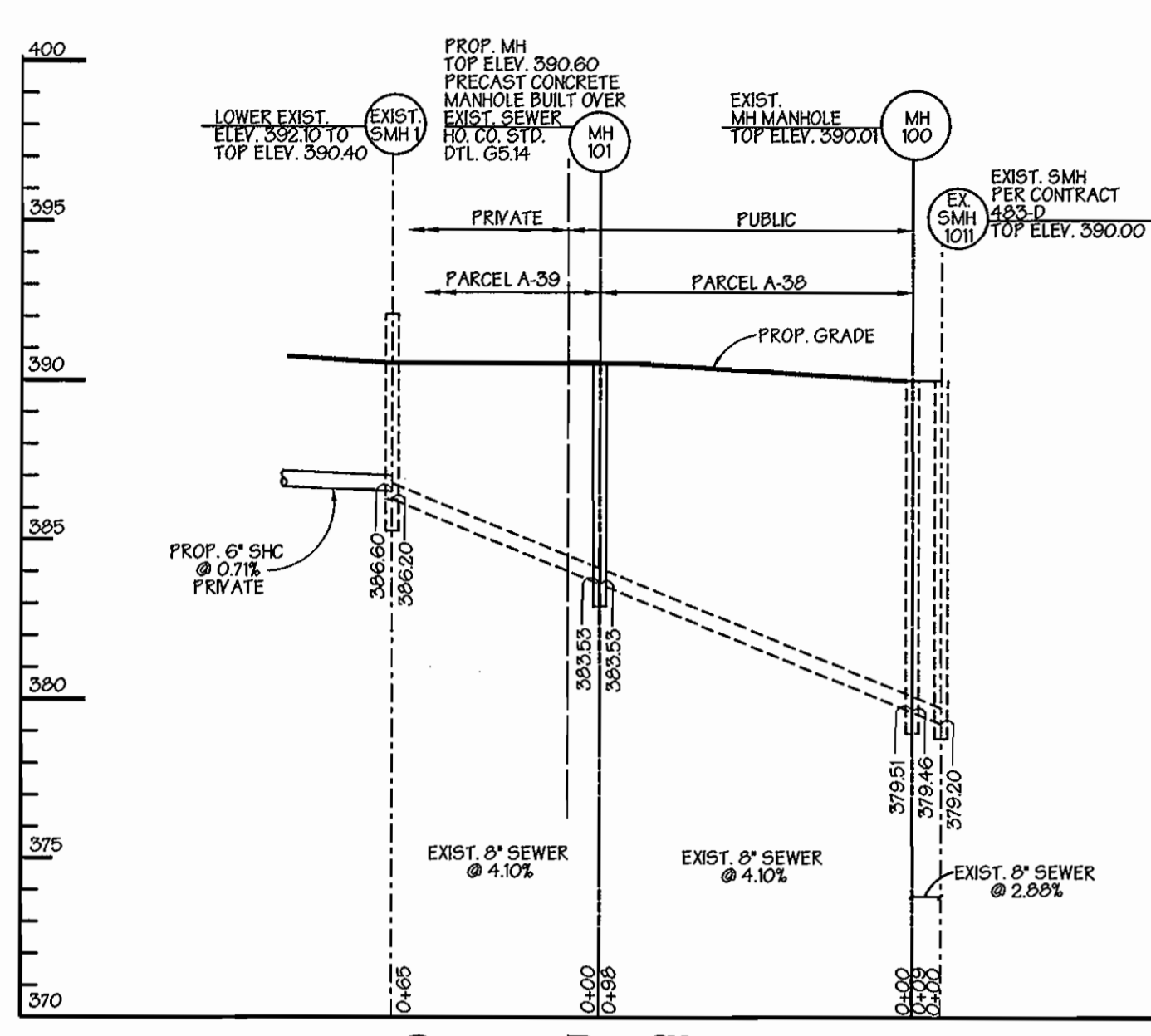
WATER AND SEWER AS-BUILTS							
VALUES	FROM	TO	DISTANCE	VALUES	FROM	TO	DISTANCE
6" FHV 0+30	I-5 VALVE	I-4 VALVE	39.5'	S/SEWER CO#1	I-1	CO#1	72.7' (IN ISLAND)
	I-4 VALVE	FH 2+50	32.8'	SEWER STA.	FHV 2+50	CO#1	74.2'
	FH VALVE	FH VALVE	7.2'	I+09 (6")	FH 2+50	CO#1	89.4'
6" VALVE 1+30	I-5 VALVE	I-4 VALVE	69.9'	S/SEWER CO#2	FH 2+50	CO#2	67' (IN ROADWAY)
	I-4 VALVE	FH 0+30	70'	SEWER STA.	FHV 2+50	CO#2	81.7'
	FH 0+30	FH VALVE	90.5'	APPROX. 2+09	PR M-2	CO#2	100'
6" VALVE 1+71	6" VALVE 1+30	FH 2+50	42.5'	(6")	(STORM DRAIN)		
	FH 2+50	FH VALVE	87'				
	6" FHV 2+50	6" FHV 1+71	85'				
6" FHV 2+50	FH 2+50	FH VALVE	87'				
	FH 2+50	FH VALVE	20.5'				
	SAN. CO#1	VALVE	74.2'				
	IN ISLAND						
6" FHV 4+04	FH 4+04	VALVE	4.8'				
	8" V 4+04	VALVE	17.2'				
	I-1	VALVE	35.5'				
8" VALVE 4+04	I-1	VALVE	35.7'				
	FH 4+04	VALVE	21.9'				
	6" V 4+04	VALVE	4.8'				

**AS BUILT**  
DATE: OCTOBER 2005

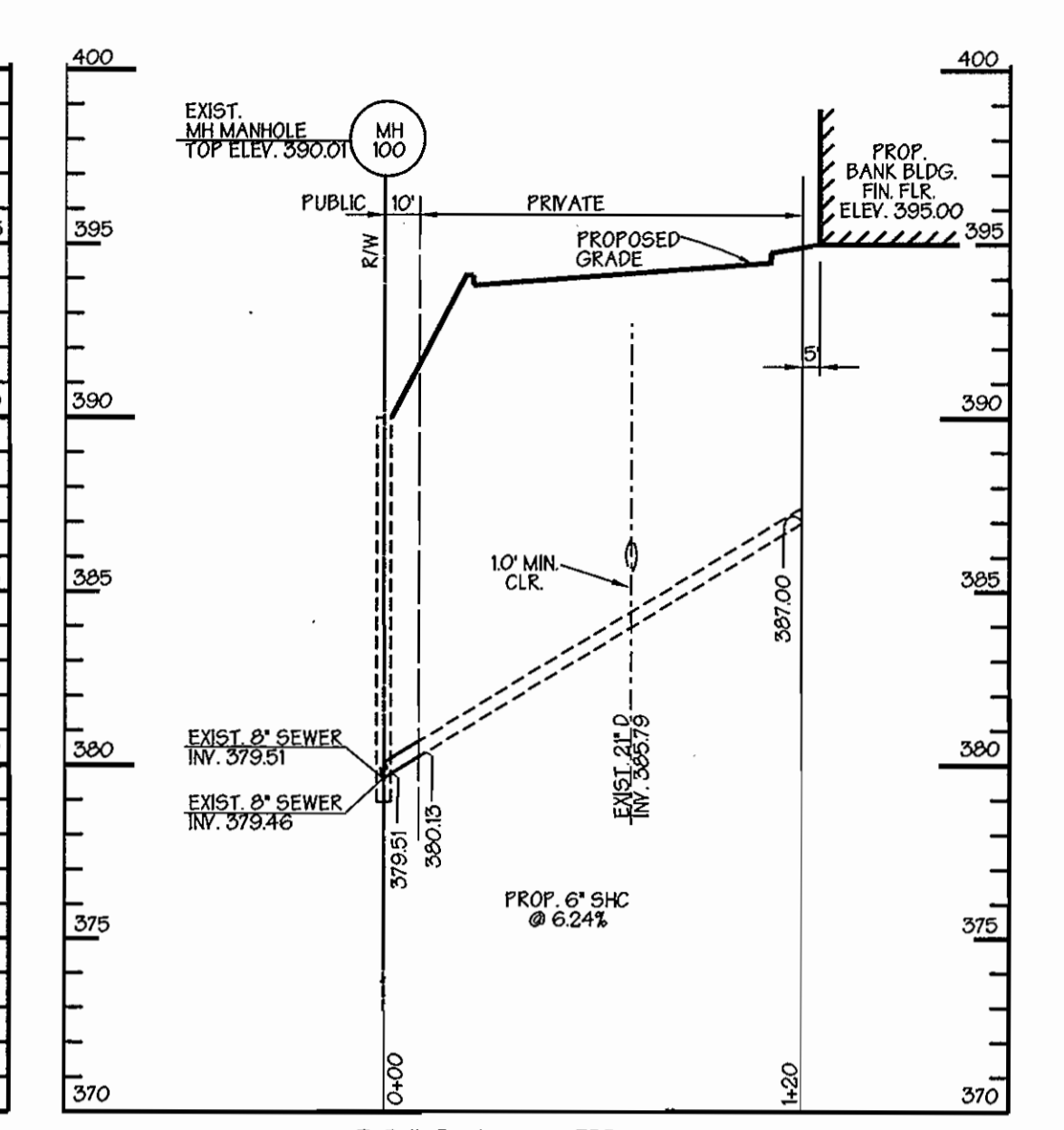
BY	NO.	REVISION	DATE
GWS	1	REVISED QUANTITIES FOR RELOCATION OF SEWER HOUSE CONNECTION TO BLDG 'A'	AUGUST 24, 2005



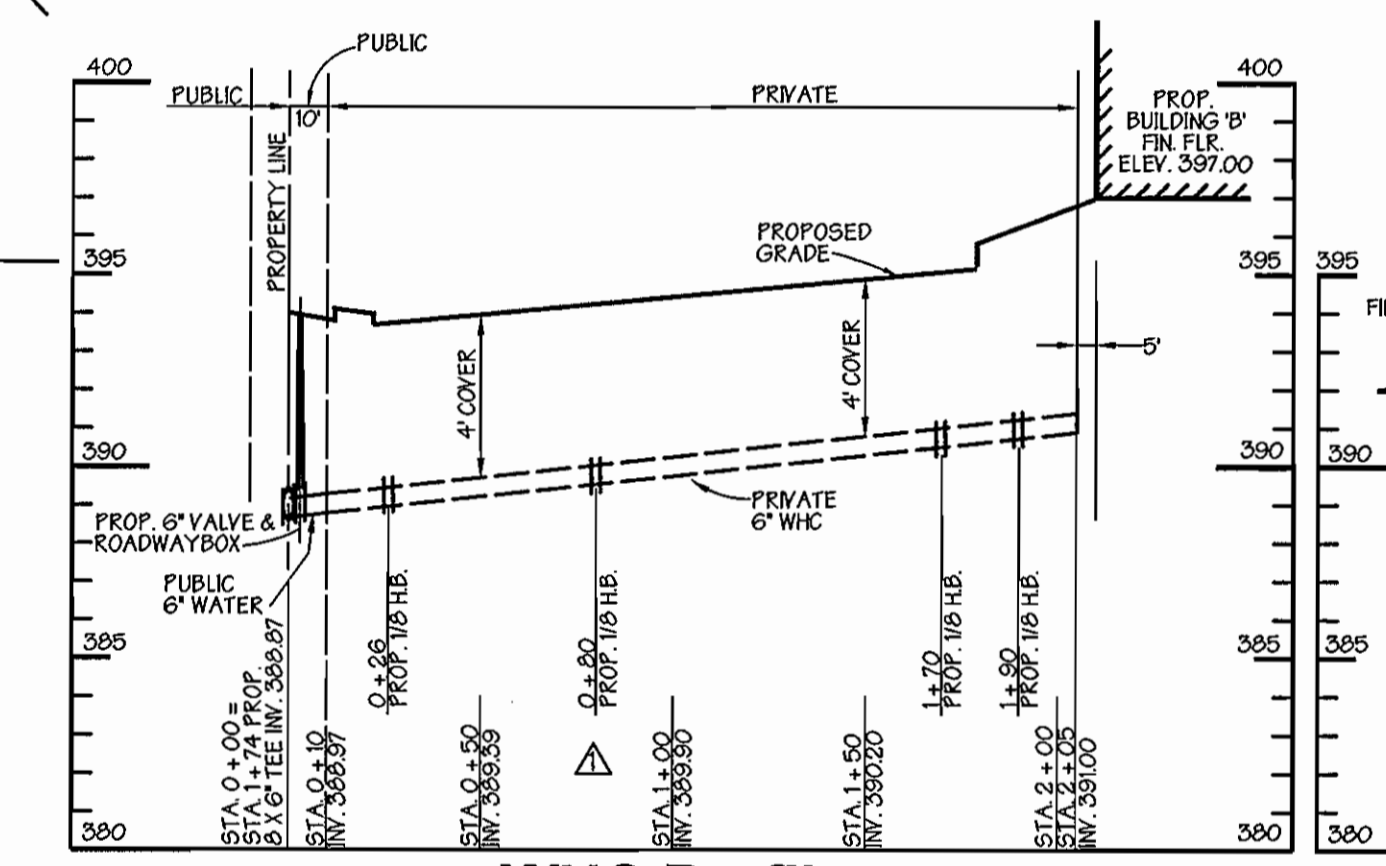
**Plan**  
SCALE: 1" = 50'



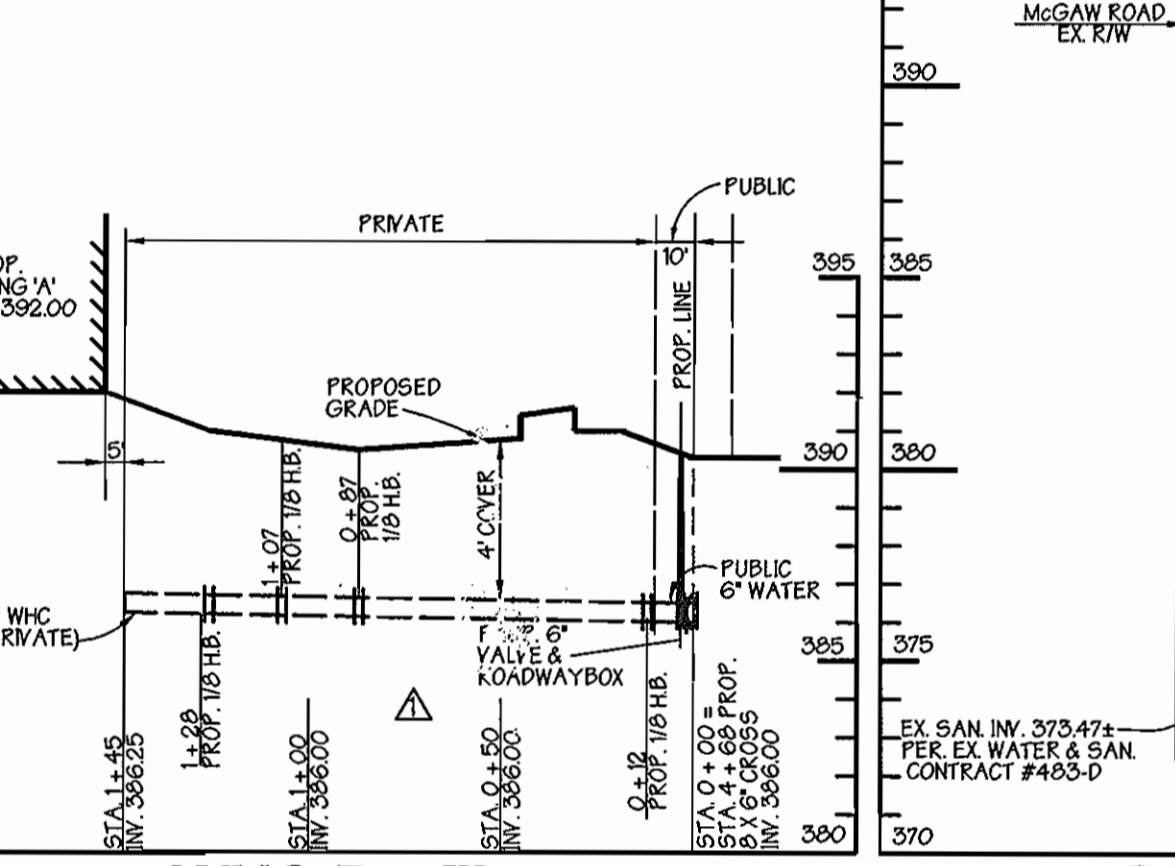
**Sewer Profile**  
SCALE: HORZ. 1" = 50'  
VERT. 1" = 5'



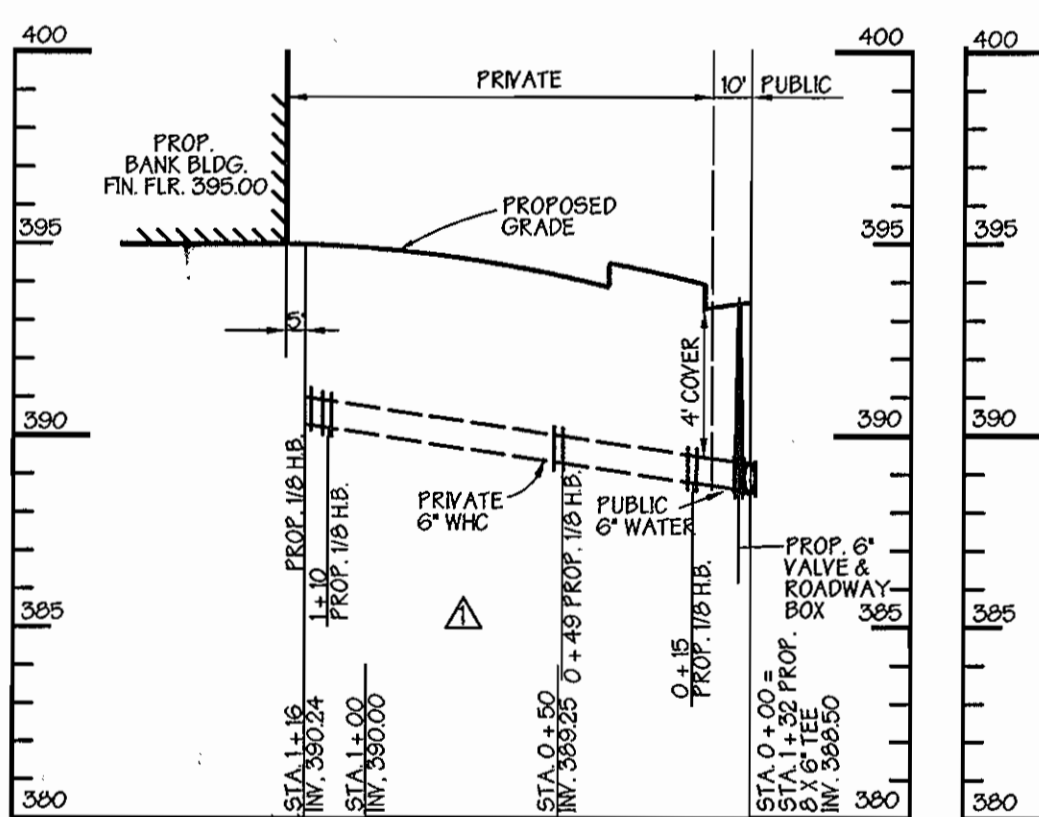
**SHC Profile**  
SCALE: HORZ. 1" = 50'  
VERT. 1" = 5'



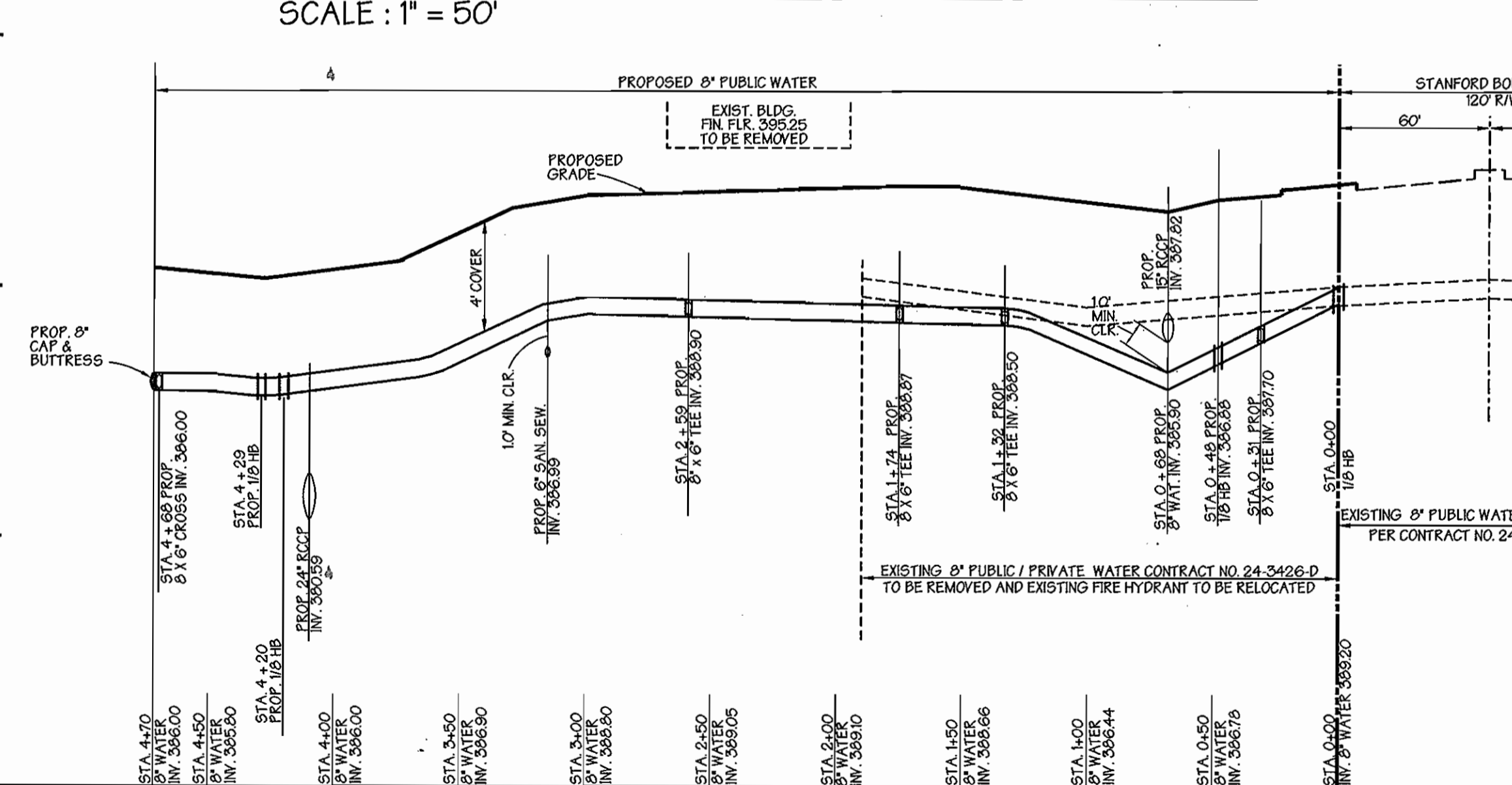
**WHC Profile**  
SCALE: HORZ. 1" = 50'  
VERT. 1" = 5'



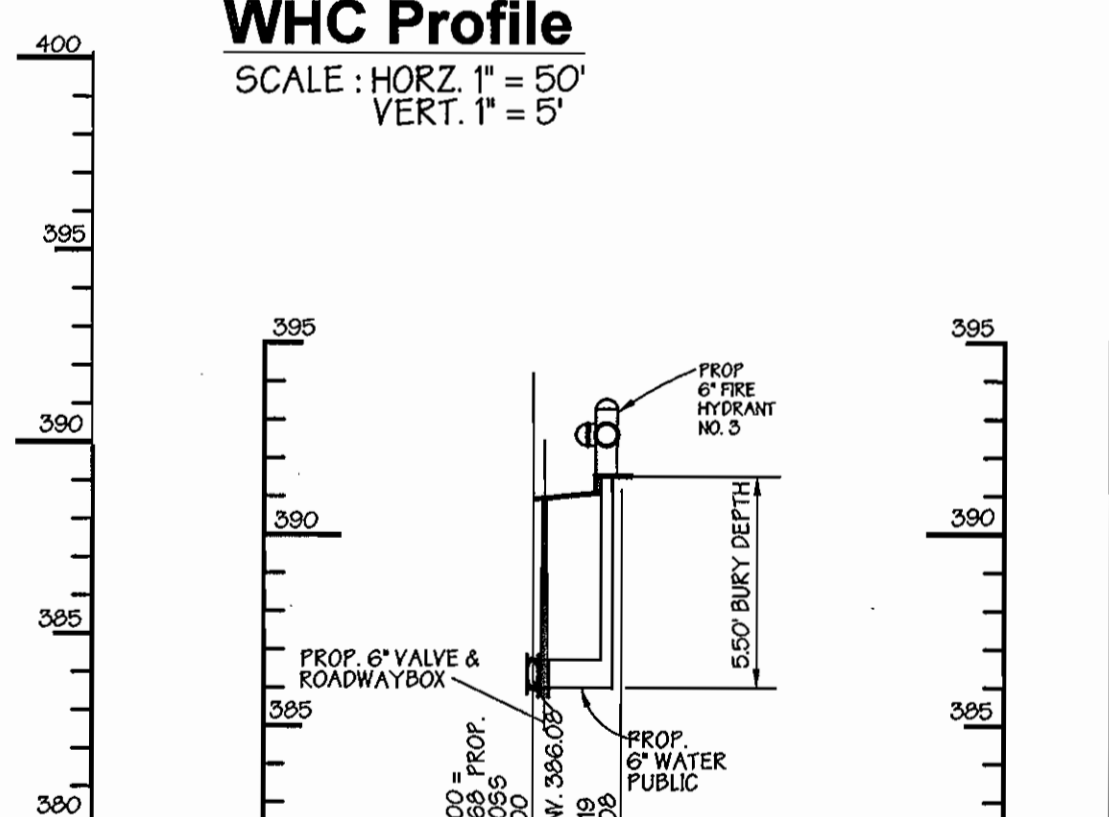
**SHC Profile**  
SCALE: HORZ. 1" = 50'  
VERT. 1" = 5'



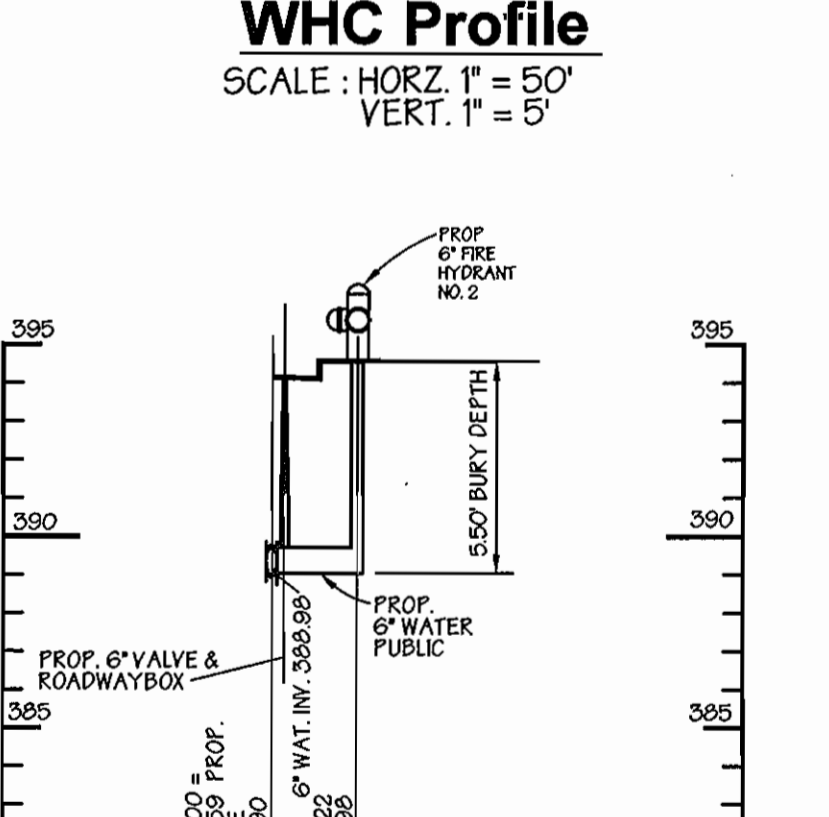
**WHC Profile**  
SCALE: HORZ. 1" = 50'  
VERT. 1" = 5'



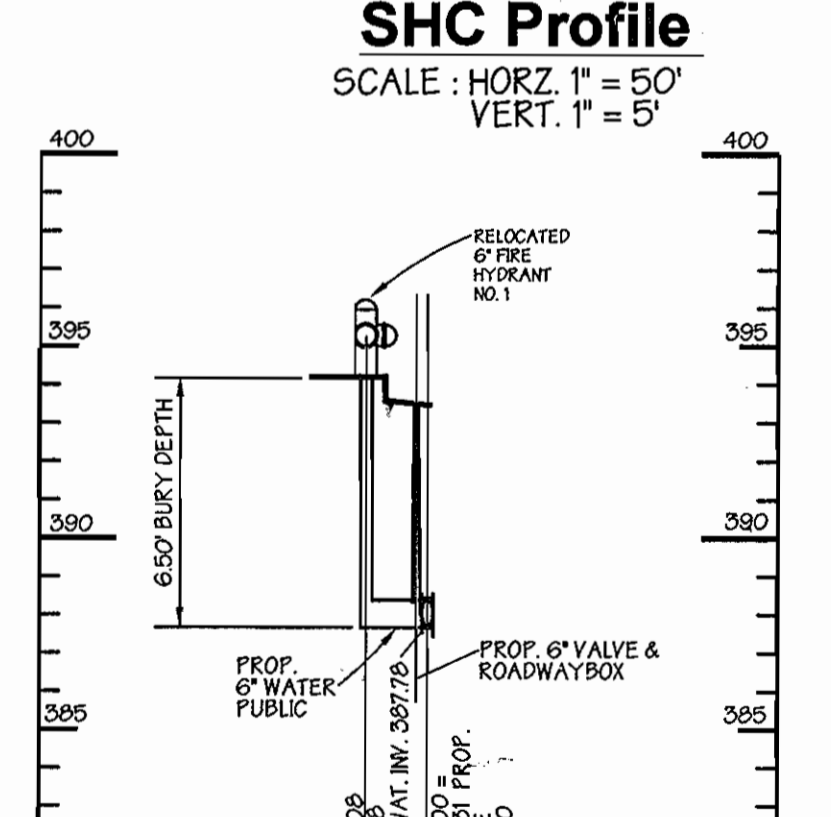
**Public Water Profile**  
SCALE: HORZ. 1" = 50'  
VERT. 1" = 5'



**Public 6" Fire Hydrant No. 3**  
SCALE: HORZ. 1" = 50'  
VERT. 1" = 5'



**Public 6" Fire Hydrant No. 2**  
SCALE: HORZ. 1" = 50'  
VERT. 1" = 5'



**Public 6" Relocated Fire Hydrant No. 1**  
SCALE: HORZ. 1" = 50'  
VERT. 1" = 5'

**AS BUILT**  
DATE: OCTOBER 2005

BY	NO.	REVISION	DATE
G.W.S.	1	REVISED WATER HOUSE CONNECTIONS TO BUILDINGS A, B AND BANK.	AUGUST 24, 2005
	2	REVISED DOMESTIC WATER FOR BUILDINGS 'A' AND 'B' TO 3" AND BANK BUILDING TO 1". REVISED SEWER HOUSE CONNECTION TO BUILDING 'A' AND BANK BUILDING. REVISED WATER AND SEWER PROFILES ACCORDINGLY.	
G.W.S.	3	REVISED DOMESTIC WATER FOR BUILDINGS 'A' AND 'B' BACK TO 2"	SEPTEMBER 15, 2005

DEVELOPER / CONTRACTOR / PURCHASER  
**MOR McGAW ACQUISITIONS, LLC**  
7061 COLUMBIA GATEWAY DRIVE  
COLUMBIA, MARYLAND 21046  
410-290-1400

DEPARTMENT OF PUBLIC WORKS  
HOWARD COUNTY, MARYLAND  
*R. J. ...*  
8-25-05  
CHIEF, BUREAU OF UTILITIES DATE

DEPARTMENT OF PLANNING & ZONING  
HOWARD COUNTY, MARYLAND  
*...*  
DATE  
CHIEF, DEVELOPMENT ENGINEERING DIVISION

**GEORGE W. STEPHENS, JR. AND ASSOCIATES, INC.**  
Civil Engineers and Land Surveyors  
1020 CROMWELL BRIDGE ROAD  
Towson, Maryland 21286  
(410) 825-8120



DESIGNED: PRC, KE  
DRAFTED: KE  
CHECKED: PRC

**PLAN AND PROFILE SHEET**  
CONTRACT NO. 44-4269-D  
600 SCALE MAP NO. 36 BLOCK NO. 23 & 24

**PUBLIC WATER AND SEWER COLUMBIA CORPORATE PARK PARCELS A-38 & A-39**  
CONTRACT NO. 44-4269-D  
HOWARD COUNTY, MARYLAND ELECTION DISTRICT \*06  
NOVEMBER 01, 2004 SHEET 2 OF 2  
P/N 10383- watertitle.01