

CONTRACT No. 44-4264-D

MAPLE LAWN FARMS
MIDTOWN DISTRICT - AREA 3
PARCEL A-4, NON-BUILDABLE PARCELS RR-1 & RR-2
AND MAPLE LAWN BOULEVARD

HOWARD COUNTY, MARYLAND
DEPARTMENT OF PUBLIC WORKS

TYPE OF BUILDING	N/A
NUMBER OF UNITS	0
NUMBER OF S.H.C.'s	0
NUMBER OF W.H.C.'s	1
DRAINAGE AREA	LITTLE PATUXENT
TREATMENT PLANT	LITTLE PATUXENT WWTP

ITEMS	QUANTITIES ESTIMATED	AS-BUILT		
		QUANTITIES	TYPE	MANUFACTURER/SUPPLIER
2" METER VAULT	1 EA.	1 EA.	CONCRETE	CONTR. PRECAST CORP.
2" WATER (IRRIGATION)	45 LF	35 LF	COPPER	HUGHES SUPPLY
6" WATER (FHs)	10 LF	40 LF	DIP CL. 52	GRIFFIN PIPE PRODUCTS
8" WATER	35 LF			
12" WATER	225 LF	935 LF	DIP CL. 52	GRIFFIN PIPE PRODUCTS
12" 1/32 VB	2 EA.	2 EA.	MJ	TYLER/HUGHES SUPPLY
12" x 8" T	1 EA.	1 EA.	MJ	TYLER/HUGHES SUPPLY
12" x 6" T (FHT)	2 EA.	2 EA.	MJ	TYLER/HUGHES SUPPLY
8" VALVE	1 EA.	1 EA.	GATE	KENNEDY/HUGHES SUPPLY
8" CAP	1 EA.	1 EA.	MJ	TYLER/HUGHES SUPPLY
8" VALVE	1 EA.	1 EA.	GATE	KENNEDY/HUGHES SUPPLY
FIRE HYDRANT - 4.5'	1 EA.	1 EA.	C 502	KENNEDY/HUGHES SUPPLY
FIRE HYDRANT - 3.5'	1 EA.	1 EA.	C 502	KENNEDY/HUGHES SUPPLY

NAME OF UTILITY CONTRACTOR: **GAINES AND COMPANY**

SURVEY AND DRAFTING DIV. CHECKBOX: AS-BUILT DATE: **4-06**

GENERAL NOTES

- PART I
- APPROXIMATE LOCATIONS OF EXISTING MAINS ARE SHOWN. THE CONTRACTOR SHALL TAKE ALL NECESSARY PRECAUTIONS TO PROTECT EXISTING MAINS AND SERVICES AND MAINTAIN UNINTERRUPTED SERVICE. ANY DAMAGE INCURRED SHALL BE REPAIRED IMMEDIATELY TO THE SATISFACTION OF THE ENGINEER AT THE CONTRACTOR'S EXPENSE.
 - TOPOGRAPHY INDICATED WAS TAKEN FROM AERIAL TOPOGRAPHY PREPARED DURING MARCH 1997 BY D.J.I. IN AREAS WITHIN THE LIMIT OF SUBMISSION WHERE NO GRADING IS BEING PROPOSED. CONTOURS SHOWN ARE GRADES ESTABLISHED UNDER F 03-90 OR SOP-03-140 (03 122).
 - HORIZONTAL AND VERTICAL SURVEY CONTROLS: THE COORDINATES SHOWN ON THE DRAWINGS ARE BASED ON MARYLAND STATE REFERENCE SYSTEM NAD 83/91 AS PROJECTED BY HOWARD COUNTY GEODETIC CONTROL STATIONS No. 41EA, AND No. 41EB. ALL VERTICAL CONTROLS ARE BASED ON NAVD 88. VERTICAL CONTROLS PROVIDED ON DRAWINGS ARE STANDARD DISCS ON CONCRETE MONUMENTS.
 - ALL PIPE ELEVATIONS SHOWN ARE INVERT ELEVATIONS UNLESS OTHERWISE NOTED ON THE PLANS.
 - CLEAR ALL UTILITIES BY A MINIMUM OF 12 INCHES. CLEAR ALL POLES BY 5'-0" MINIMUM OR TUNNEL AS REQUIRED UNLESS OTHERWISE NOTED. THE OWNER HAS CONTACTED THE UTILITY COMPANIES AND HAS MADE ARRANGEMENTS FOR BRACING OF POLES AS SHOWN ON THE DRAWINGS. IN THE EVENT THE CONTRACTOR'S WORK REQUIRES BRACING OF ADDITIONAL POLES, ANY COST INCURRED BY THE OWNER FOR THE BRACING OF ADDITIONAL POLES OR DAMAGES SHALL BE DEDUCTED FROM MONIES OWED THE CONTRACTOR. THE CONTRACTOR SHALL COORDINATE WITH THE UTILITY COMPANIES TO SCHEDULE THE BRACING OF THE POLES.
 - FOR DETAILS NOT SHOWN ON THE DRAWING, AND FOR MATERIALS AND CONSTRUCTION METHODS, USE HOWARD COUNTY DESIGN MANUAL, VOLUME IV, STANDARD SPECIFICATIONS AND DETAILS FOR CONSTRUCTION (LATEST EDITION). THE CONTRACTOR SHALL HAVE A COPY OF VOLUME IV ON THE JOB.
 - WHERE TEST PITS HAVE BEEN MADE ON EXISTING UTILITIES, THEY ARE NOTED BY THE SYMBOL AT THE LOCATIONS OF THE TEST PITS. A NOTE OR NOTES CONTAINING THE RESULTS OF THE TEST PIT OR PITS IS INCLUDED ON THE DRAWINGS. EXISTING UTILITIES IN THE VICINITY OF THE PROPOSED WORK FOR WHICH TEST PITS HAVE NOT BEEN DUG SHALL BE LOCATED BY THE CONTRACTOR TWO WEEKS IN ADVANCE OF CONSTRUCTION OPERATIONS AT HIS OWN EXPENSE.
 - THE CONTRACTOR SHALL NOTIFY THE FOLLOWING UTILITY COMPANIES OR AGENCIES AT LEAST FIVE WORKING DAYS BEFORE STARTING WORK ON THESE PLANS:

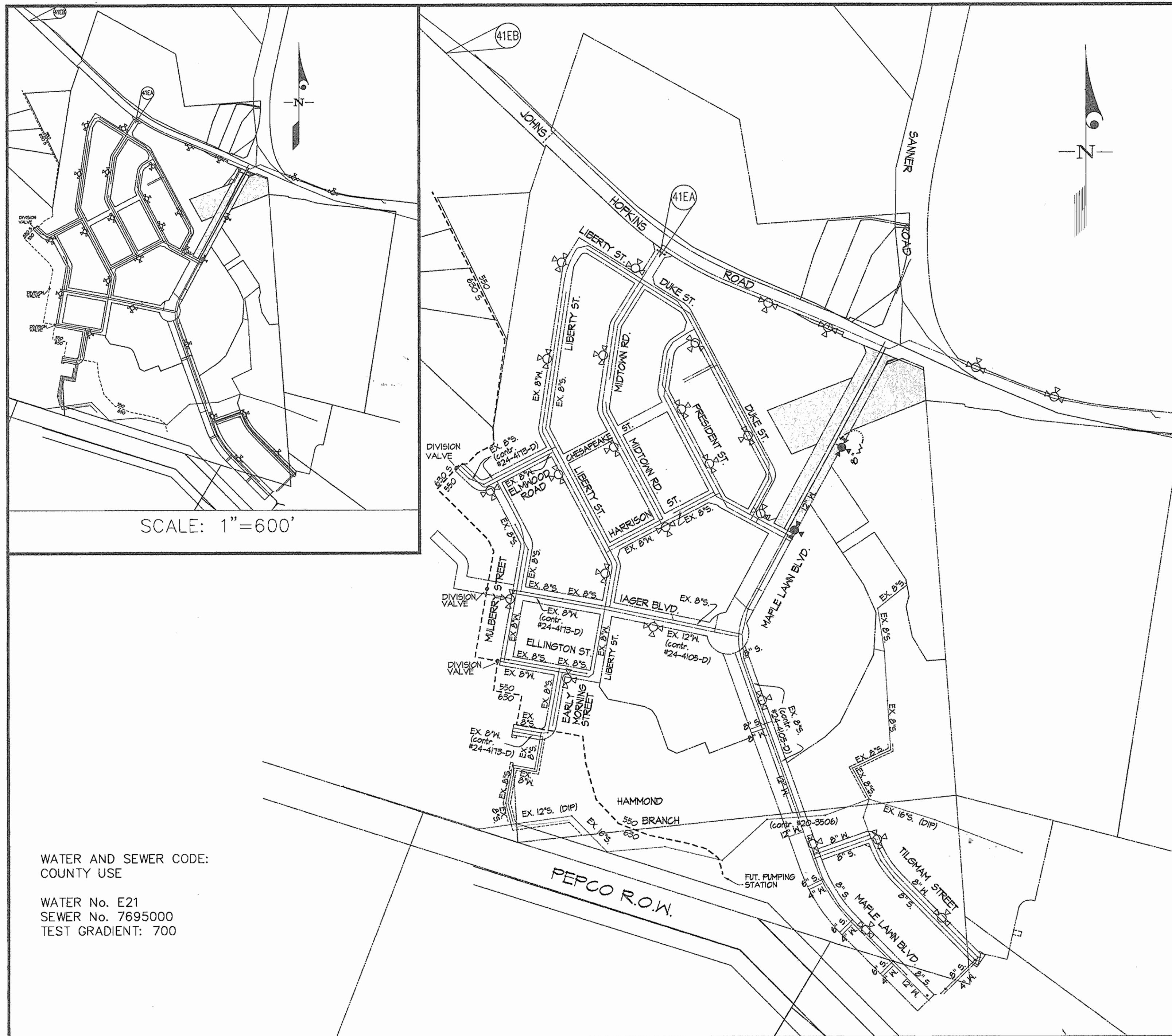
AT&T	1-800-252-1133
EGE (CONTRACTOR SERVICES)	410-850-4620
EGE (UNDER GROUND DAMAGE CONTROL)	410-685-1400
BUREAU OF UTILITIES	410-315-4400
COLONIAL PIPELINE CO.	410-745-1340
MISS UTILITY	1-800-251-7777
STATE HIGHWAY ADMINISTRATION	410-531-5533
VERIZON	1-800-743-0033 / 410-224-9210
 - TREES AND SHRUBS ARE TO BE PROTECTED FROM DAMAGE TO THE MAXIMUM EXTENT. TREES AND SHRUBS LOCATED WITHIN THE CONSTRUCTION AREA STRIP ARE NOT TO BE REMOVED OR DAMAGED BY THE CONTRACTOR.
 - THE CONTRACTOR SHALL REMOVE TREES, STUMPS AND ROOTS ALONG THE LINE OF EXCAVATION. PAYMENT FOR SUCH REMOVAL SHALL BE INCLUDED IN THE UNIT PRICE BID FOR CONSTRUCTION OF THE MAIN.
 - THE CONTRACTOR SHALL NOTIFY THE BUREAU OF HIGHWAYS, HOWARD COUNTY, AT (410)-315-7450 AT LEAST FIVE WORKING DAYS BEFORE OPEN CUTTING OR BORING/JACKING OF ANY COUNTY ROAD FOR LAYING WATER/SEWER MAINS OR HOUSE CONNECTIONS. THE APPROVAL OF THESE DRAWINGS WILL CONSTITUTE COMPLIANCE WITH DPM REQUIREMENTS PER SECTION 18.114(c) OF THE HOWARD COUNTY CODE.

PART II - WATER

- ALL MAINS SHALL BE D.I.P. CLASS 52 UNLESS OTHERWISE NOTED.
- TOPS OF ALL WATER MAINS SHALL HAVE A MINIMUM OF 3'-6" OF COVER UNLESS OTHERWISE NOTED.
- VALVES ADJACENT TO TEES SHALL BE STRAPPED TO TEES.
- ALL FITTINGS SHALL BE BUTTRESSED OR ANCHORED WITH CONCRETE IN ACCORDANCE WITH STANDARD DETAILS UNLESS OTHERWISE PROVIDED FOR ON THE DRAWINGS.
- FIRE HYDRANTS SHALL BE SET TO THE BURY LINE ELEVATIONS SHOWN ON THE DRAWINGS. ALL FIRE HYDRANTS SHALL BE INSTALLED IN ACCORDANCE WITH STANDARD DETAILS. THE SOIL AROUND THE FIRE HYDRANT SHALL BE COMPACTED IN ACCORDANCE WITH SECTION 1000 AND SECTION 1005 OF THE STANDARD SPECIFICATIONS.
- THE CONTRACTOR SHALL NOT OPERATE ANY WATER MAIN VALVES ON THE EXISTING WATER SYSTEM.

PART III - SEWER

- ALL SEWER MAINS SHALL BE D.I.P. OR P.V.C. UNLESS OTHERWISE NOTED.
- ALL MANHOLES SHALL BE 4'-0" INSIDE DIAMETER UNLESS OTHERWISE NOTED.
- FORCE MAINS SHALL BE D.I.P. ONLY.
- MANHOLES SHOWN WITH THE 12" AND 16" WALLS ARE FOR BRICK MANHOLES ONLY.
- MANHOLES DESIGNATED W.T. IN PLAN AND PROFILE SHALL HAVE WATERTIGHT FRAME AND COVER, STANDARD DETAIL 6552. WHERE WATERTIGHT MANHOLE FRAMES AND COVERS ARE USED, SET TOP OF FRAME 1'-6" ABOVE FINISHED GRADE UNLESS OTHERWISE NOTED ON THE DRAWINGS.
- HOUSE(S) WITH THE SYMBOL "C.N.S." INDICATES THE CELLAR CANNOT BE SERVED.

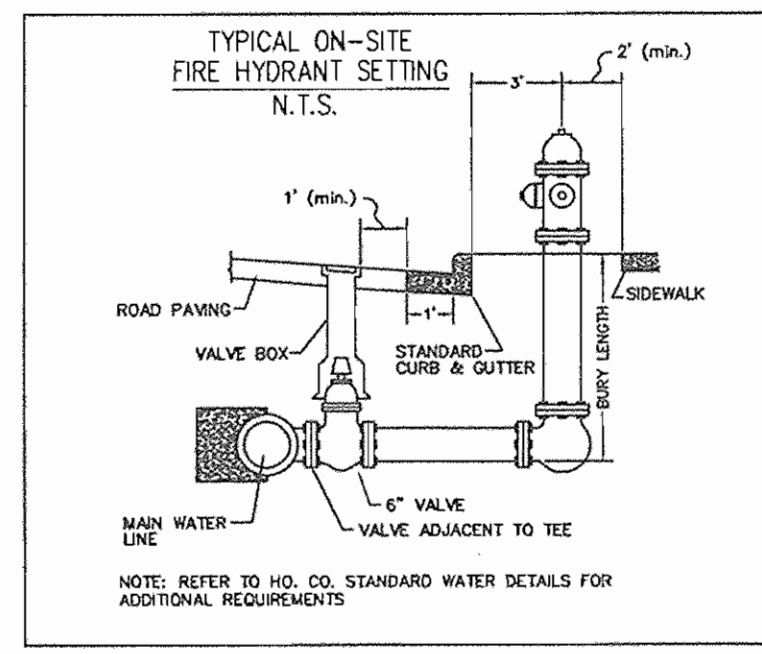


SCALE: 1"=600'

WATER AND SEWER CODE:
COUNTY USE

WATER No. E21
SEWER No. 7695000
TEST GRADIENT: 700

VICINITY MAP
SCALE: 1"=300'



SEDIMENT CONTROL MEASURES WILL BE IMPLEMENTED IN ACCORDANCE WITH SECTION 214 OF THE SPECIFICATIONS, WITH ROAD DRAWINGS PLAN F (15-34, DRAWINGS 6 THRU 8 FOR SEDIMENT & EROSION CONTROL, AND WITH THESE PLANS.

REVIEWED FOR HOWARD SOIL CONSERVATION DISTRICT AND MEETS TECHNICAL REQUIREMENT.

Jim Meyer 6/25/05
SIGNATURE DATE
U.S.D.A. NATURAL RESOURCES CONSERVATION SERVICE

THIS DEVELOPMENT PLAN IS APPROVED FOR SOIL EROSION AND SEDIMENT CONTROL BY THE HOWARD SOIL CONSERVATION DISTRICT.

APPROVED: *John K. Robinson* 6/25/05
DATE
HOWARD S.C.D.

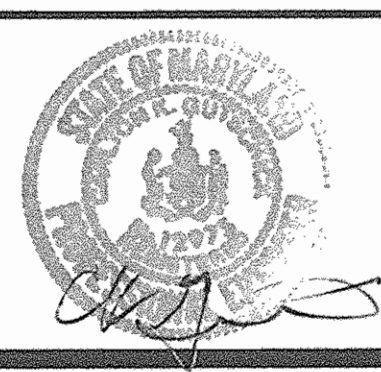
DEPARTMENT OF PUBLIC WORKS
HOWARD COUNTY, MARYLAND

John K. Robinson 6-30-05
CHIEF, BUREAU OF UTILITIES DATE

DEPARTMENT OF PLANNING AND ZONING
HOWARD COUNTY, MARYLAND

John K. Robinson 7/6/05
CHIEF, DEVELOPMENT ENGINEERING DIVISION DATE

GLWGUTSCHICK LITTLE & WEBER, P.A.
CIVIL ENGINEERS, LAND SURVEYORS, LAND PLANNERS, LANDSCAPE ARCHITECTS
3909 NATIONAL DRIVE - SUITE 250 - BURTONSVILLE OFFICE PARK
BURTONSVILLE, MARYLAND 20866
TEL: 301-421-4024 FAX: 410-680-1820 DC/VA: 301-989-2524 FAX: 301-421-4186



DES: TWL	REVISED QUANTITIES	12/12/05
DRN: AWL	REVISED QUANTITIES	10/20/07
CHK: DEV		
DATE: 6/05	BY NO	REVISION

TITLE SHEET
SCALE: AS SHOWN

600' SCALE MAP NO. 41 BLOCK NO. 16

AS BUILT
DATE: APRIL 2006

MAPLE LAWN FARMS
MIDTOWN DISTRICT - AREA 3
PARCEL A-4, NON-BUILDABLE PARCELS RR-1 & RR-2
AND MAPLE LAWN BOULEVARD
HOWARD COUNTY, MARYLAND
ELECTION DISTRICT No. 5
CONTRACT No. 44-4264-D

GLW FILE #04001
04001bWS1.dwg

SCALE AS SHOWN

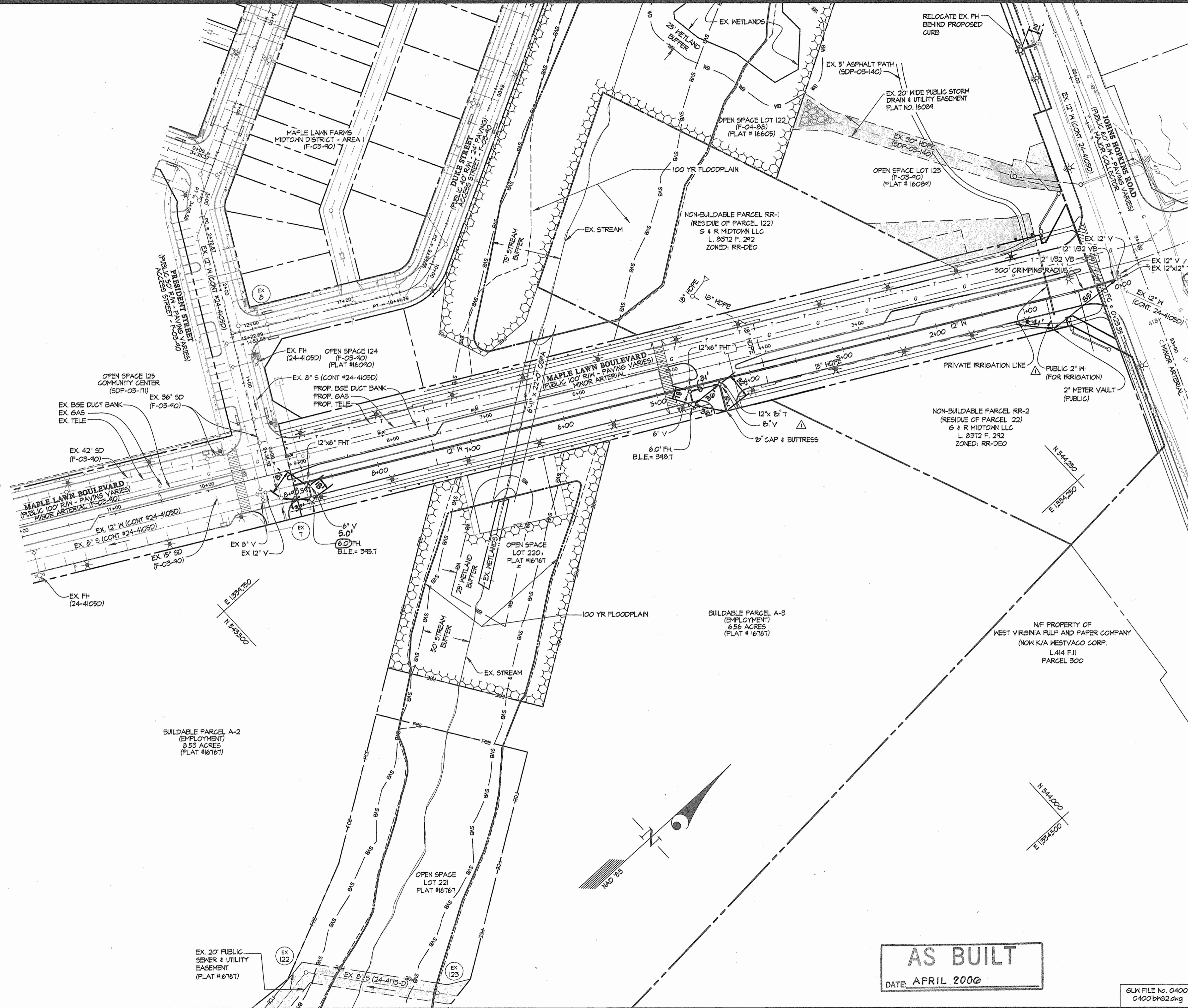
SHEET 1 OF 3

FOR PROFILES SEE SHEETS 3

MAPLE LAWN BOULEVARD		
FITTING/MANHOLE	STA./OFFSET	COORDINATES
12" I/32 VB	0+28-14.4' LEFT	N. 544.421 E. 1340.120
12" I/32 VB	0+42-15.4' LEFT	N. 544.408 E. 1340.115
12" x 8" T.	4+55-16.5' LEFT	N. 544.045 E. 1339.920
12" x 6" F.H.T.	4+87-16.5' LEFT	N. 544.017 E. 1339.904
12" x 6" F.H.T.	8+97-16.5' LEFT	N. 543.656 E. 1339.709

MAPLE LAWN BOULEVARD		
CRIMPING RADIUS	BEGIN @ STA.	END @ STA.
300' RADIUS	0+17	0+40

- LEGEND
- 100 YR FLOODPLAIN
 - WETLANDS
 - WETLAND BUFFER
 - STREAM BUFFER
 - PROPOSED WATER MAIN
 - PROPOSED STORM DRAIN
 - EASEMENT
 - FOREST CONSERVATION EASEMENT



AS BUILT
DATE: APRIL 2006

GLW FILE No. 04001
04001bns2.dwg

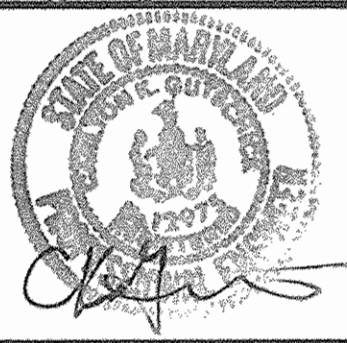
DEPARTMENT OF PUBLIC WORKS
HOWARD COUNTY, MARYLAND

R. J. ...
6-30-05
CHIEF, BUREAU OF UTILITIES

DEPARTMENT OF PLANNING AND ZONING
HOWARD COUNTY, MARYLAND

...
7/6/05
CHIEF, DEVELOPMENT ENGINEERING DIVISION

GLWGUTSCHICK LITTLE & WEBER, P.A.
CIVIL ENGINEERS, LAND SURVEYORS, LAND PLANNERS, LANDSCAPE ARCHITECTS
3309 NATIONAL DRIVE - SUITE 250 - BURTONSVILLE OFFICE PARK
BURTONSVILLE, MARYLAND 20866
TEL: 301-421-4024 BAL: 410-850-1520 DC/VA: 301-989-2524 FAX: 301-421-4186



DES: AWL	dev	Revised entrance monument	12/12/05
DRN: AWL	k/p	irrigation & revised 2" to 12" in Per. 23	12/12/05
CHK: DEV		changed 12" stub for Per. A-2 to an 8"	10/29/07
DATE: 5/05	BY NO	REVISION	DATE

WATER and SEWER EXTENSION
PLAN

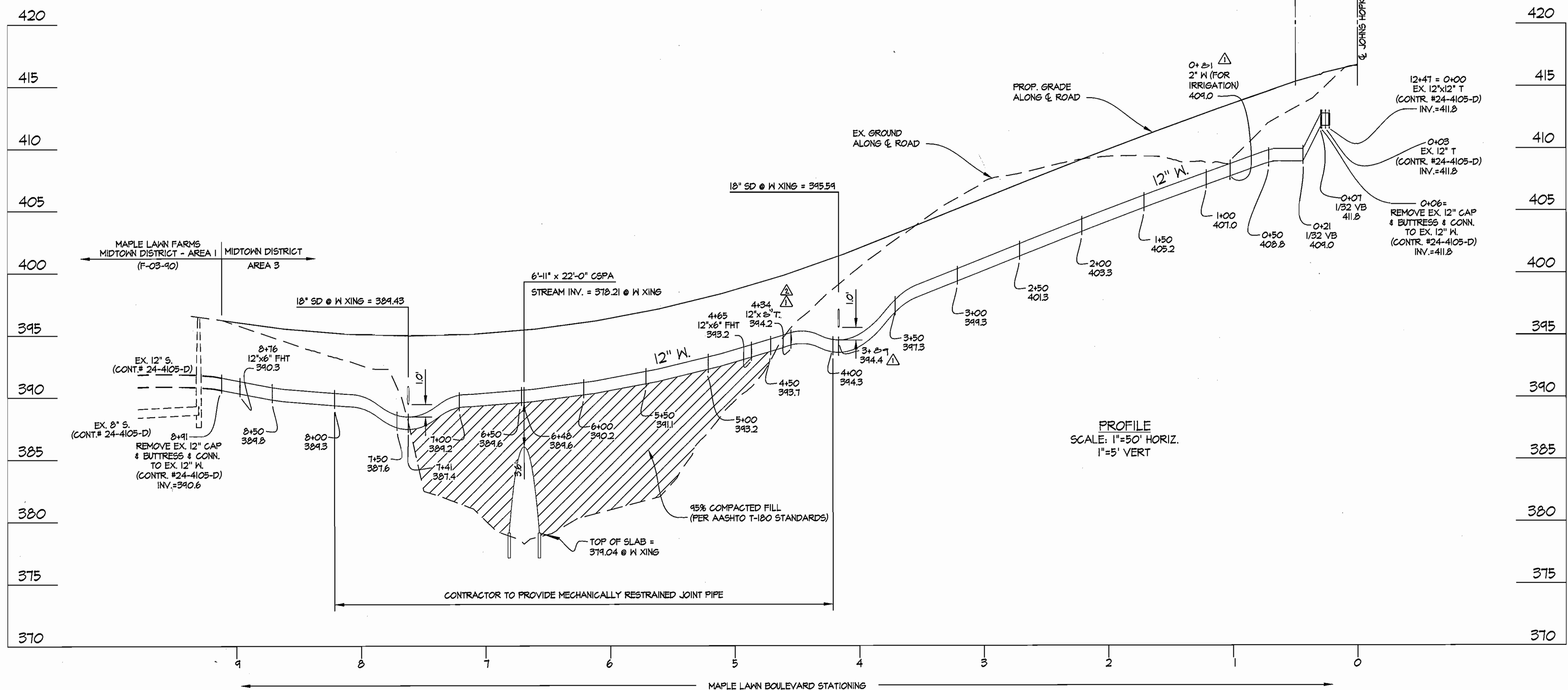
600' SCALE MAP NO. 46 BLOCK NO. 4

MAPLE LAWN FARMS
MIDTOWN DISTRICT - AREA 3
PARCEL A-4, NON-BUILDABLE PARCELS RR-1 & RR-2
and MAPLE LAWN BOULEVARD
HOWARD COUNTY, MARYLAND
ELECTION DISTRICT No. 5
CONTRACT No. 44-4264-D

SCALE
1"=50'

SHEET
2 OF 3

L:\CAD\DRAWINGS\04001\04001bns2.dwg 6/20/2005 9:46:41 AM LSI



AS BUILT
DATE: APRIL 2006

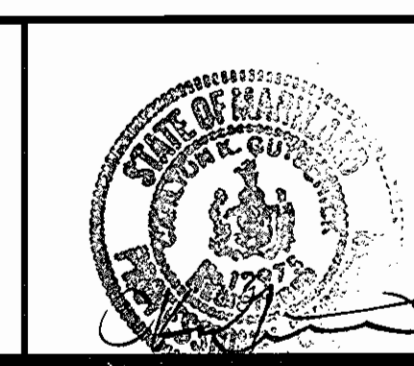
GLW FILE #04001
04001bWS3.dwg

L:\CADD\DRAWINGS\04001\04001B\WS\04001bWS3.dwg 6/20/2005 9:50:04 AM EST

DEPARTMENT OF
PUBLIC WORKS
HOWARD COUNTY, MARYLAND
R. B. ...
6-30-05
CHIEF, BUREAU OF UTILITIES

DEPARTMENT OF
PLANNING AND ZONING
HOWARD COUNTY, MARYLAND
...
DATE

GLWGUTSCHICK LITTLE & WEBER, P.A.
CIVIL ENGINEERS, LAND SURVEYORS, LAND PLANNERS, LANDSCAPE ARCHITECTS
3909 NATIONAL DRIVE - SUITE 250 - BURTONSVILLE OFFICE PARK
BURTONSVILLE, MARYLAND 20866
TEL: 301-421-4024 BALT. 410-580-1820 DC/VA: 301-988-2524 FAX: 301-421-4186



DES: TWL	REV 1	Revised 2" water main location, etc. for 12" water main and 12" x 24" T to 12" x 24" T.	12/12/05
DRN: AWL	REV 2	Rev. 12" x 24" T to 12" x 24" T.	10/20/07
CHK: DEV			
DATE: 6/05	BY: NO	REVISION	DATE

WATER EXTENSION
PLAN
600' SCALE MAP NO. 46 BLOCK NO. 4

MAPLE LAWN FARMS
MIDTOWN DISTRICT - AREA 3
PARCEL A-4, NON-BUILDABLE PARCELS RR-1 && RR-2
AND MAPLE LAWN BOULEVARD
HOWARD COUNTY, MARYLAND
ELECTION DISTRICT No. 5
CONTRACT No. 44-4264-D

SCALE AS SHOWN
SHEET 3 OF 3