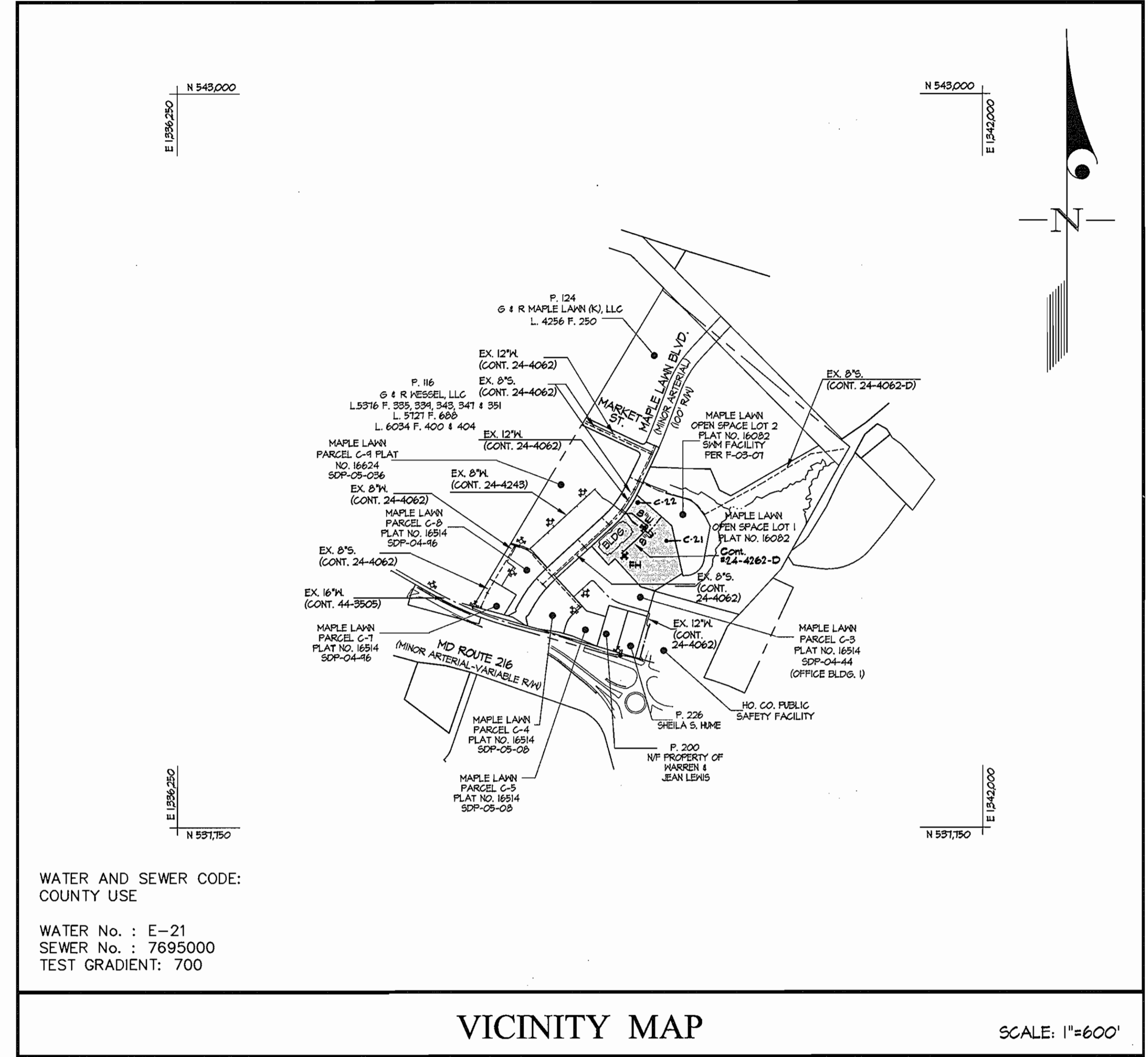


QUANTITIES				
ITEMS	QUANTITIES ESTIMATED	AS-BUILT		
		QUANTITIES	TYPE	MANUFACTURER/SUPPLIER
6" WATER	30 L.F.	30 L.F.	DIP	GRIFFIN PIPE
8" WATER MAIN	471 L.F.	477 L.F.	DIP	GRIFFIN PIPE
8" CAP	2 EA.	2 EA.	-	TYLER/HUGHES
8"x8" TEE	1 EA.	1 EA.	-	TYLER/HUGHES
8" 1/8 HB.	4 EA.	4 EA.	-	TYLER/HUGHES
1 1/2" water	15 L.F.			
6" VALVE	2 EA.	2 EA.	GATE	KENNEDY/HUGHES
8"x6" FHT	2 EA.	2 EA.	GATE	TYLER/HUGHES
FIRE HYDRANT	2 EA.	2 EA.	CLASS B	KENNEDY/HUGHES
SEWER MANHOLE - TYPE B' DROP	1 EA.			
8" SEWER MAIN	141 L.F.			
NAME OF UTILITY CONTRACTOR: GAINES AND COMPANY				

SURVEY AND DRAFTING DIV. CHECKBOX AS-BUILT DATE: 12-23-05

BENCHMARKS	
416A	ELEV. = 462.16
STANDARD DISC ON CONCRETE MONUMENT	
46B2	ELEV. = 474.67
STANDARD DISC ON CONCRETE MONUMENT	



WATER AND SEWER CODE: COUNTY USE
 WATER No. : E-21
 SEWER No. : 7695000
 TEST GRADIENT: 700

VICINITY MAP

SCALE: 1"=600'

CONTRACT No. 24-4262-D
 MAPLE LAWN FARMS
 PARCELS C-21 & C-22
 PLAT No. 16514
 HOWARD COUNTY, MARYLAND
 DEPARTMENT OF PUBLIC WORKS

SEDIMENT CONTROL MEASURES WILL BE IMPLEMENTED IN ACCORDANCE WITH SECTION 214 OF THE SPECIFICATIONS & WITH SITE DEVELOPMENT PLAN SOP-05-04; DRAWINGS FOR SEDIMENT & EROSION CONTROL.

REVIEWED FOR HOWARD SOIL CONSERVATION DISTRICT AND MEETS TECHNICAL REQUIREMENTS.
 Signature: John R. Roberts
 DATE: 3/3/05
 U.S.D.A. NATURAL RESOURCES CONSERVATION SERVICE

THIS DEVELOPMENT PLAN IS APPROVED FOR SOIL EROSION AND SEDIMENT CONTROL BY THE HOWARD SOIL CONSERVATION DISTRICT.
 APPROVED: John R. Roberts
 DATE: 3/3/05
 HOWARD S.C.D.

OWNER/DEVELOPER:
 618 MAPLE LAWN, INC. et. al.
 SUITE 410, WOODHOLME CENTER
 1624 REGISTER TOWN ROAD
 BALTIMORE, MD 21228
 Attn: CHARLIE O'DONOVAN
 410-484-8400

DEPARTMENT OF PUBLIC WORKS
 HOWARD COUNTY, MARYLAND
 Signature: R. M. B...
 DATE: 3-17-05
 CHIEF, BUREAU OF UTILITIES

DEPARTMENT OF PLANNING AND ZONING
 HOWARD COUNTY, MARYLAND
 Signature: ...
 DATE: 3/21/05
 CHIEF, DEVELOPMENT ENGINEERING DIVISION

GLW GUTSCHICK LITTLE & WEBER, P.A.
 CIVIL ENGINEERS, LAND SURVEYORS, LAND PLANNERS, LANDSCAPE ARCHITECTS
 3909 NATIONAL DRIVE - SUITE 250 - BURTONSVILLE OFFICE PARK
 BURTONSVILLE, MARYLAND 20866
 TEL: 301-421-4024 BALT: 410-880-1820 DC/VA: 301-989-2524 FAX: 301-421-4186



DES:	MBT	DATE:	2005
DRN:	KLP		
CHK:	CKG	add sewer from 2-250 to public and other detail	2/16/05
DATE:	Feb	add new parcel lines	2/16/05
BY:	NO	REVISION	DATE

WATER EXTENSION
 PLAN
 SCALE: AS SHOWN
 600' SCALE MAP NO. 46 BLOCK NO. 4

MAPLE LAWN FARMS
 BUSINESS DISTRICT
 PARCEL C-21 & C-22
 HOWARD COUNTY, MARYLAND
 ELECTION DISTRICT No. 5
 CONTRACT No. 24-4262-D

SCALE AS SHOWN
 SHEET 1 OF 2

TYPE OF BUILDING	OFFICE & Bank
NUMBER OF UNITS	1 buildings
NUMBER OF S.H.C.'s	N/A (PER SDP-05-041)
NUMBER OF W.H.C.'s	1 (1 per building)
DRAINAGE AREA	LITTLE PATUXENT
TREATMENT PLANT	LITTLE PATUXENT

GENERAL NOTES

PART I

- APPROXIMATE LOCATIONS OF EXISTING MAINS ARE SHOWN. THE CONTRACTOR SHALL TAKE ALL NECESSARY PRECAUTIONS TO PROTECT EXISTING MAINS AND SERVICES AND MAINTAIN UNINTERRUPTED SERVICE. ANY DAMAGE INCURRED SHALL BE REPAIRED IMMEDIATELY TO THE SATISFACTION OF THE ENGINEER AT THE CONTRACTOR'S EXPENSE.
- TOPOGRAPHIC FIELD SURVEYS WERE PERFORMED ON OCTOBER 03, 2003 BY GUTSCHICK, LITTLE & WEBER, P.A.
- HORIZONTAL AND VERTICAL SURVEY CONTROLS: THE COORDINATES SHOWN ON THE DRAWINGS ARE BASED ON MARYLAND STATE REFERENCE SYSTEM NAD '83/91 AS PROJECTED BY HOWARD COUNTY GEODETIC CONTROL STATIONS No. 416A AND No. 46B2. ALL VERTICAL CONTROLS ARE BASED ON NA VD '88. VERTICAL CONTROLS PROVIDED ON THE DRAWINGS ARE STANDARD DISC ON CONCRETE MONUMENT.
- ALL PIPE ELEVATIONS SHOWN ARE INVERT ELEVATIONS UNLESS OTHERWISE NOTED ON THE PLANS.
- CLEAR ALL UTILITIES BY A MINIMUM OF 12 INCHES. CLEAR ALL POLES BY 5'-0" MINIMUM OR TUNNEL AS REQUIRED UNLESS OTHERWISE NOTED. THE OWNER HAS CONTACTED THE UTILITY COMPANIES AND HAS MADE ARRANGEMENTS FOR BRACING OF POLES AS SHOWN ON THE DRAWINGS. IN THE EVENT THE CONTRACTOR'S WORK REQUIRES THE BRACING OF ADDITIONAL POLES, ANY COST INCURRED BY THE OWNER FOR THE BRACING OF ADDITIONAL POLES OR DAMAGES SHALL BE DEDUCTED FROM MONIES OWED THE CONTRACTOR. THE CONTRACTOR SHALL COORDINATE WITH THE UTILITY COMPANIES TO SCHEDULE THE BRACING OF THE POLES.
- FOR DETAILS NOT SHOWN ON THE DRAWING, AND FOR MATERIALS AND CONSTRUCTION METHODS, USE HOWARD COUNTY DESIGN MANUAL, VOLUME IV, STANDARD SPECIFICATIONS AND DETAILS FOR CONSTRUCTION (LATEST EDITION). THE CONTRACTOR SHALL HAVE A COPY OF VOLUME IV ON THE JOB.
- WHERE TEST PITS HAVE BEEN MADE ON EXISTING UTILITIES, THEY ARE NOTED BY THE SYMBOL [] AT THE LOCATIONS OF THE TEST PITS. A NOTE OR NOTES CONTAINING THE RESULTS OF THE TEST PIT OR PITS IS INCLUDED ON THE DRAWINGS. EXISTING UTILITIES IN THE VICINITY OF THE PROPOSED WORK FOR WHICH TEST PITS HAVE NOT BEEN DUG SHALL BE LOCATED BY THE CONTRACTOR TWO WEEKS IN ADVANCE OF CONSTRUCTION OPERATIONS AT HIS OWN EXPENSE.
- THE CONTRACTOR SHALL NOTIFY THE FOLLOWING UTILITY COMPANIES OR AGENCIES AT LEAST FIVE WORKING DAYS BEFORE STARTING WORK SHOWN ON THESE PLANS.

AT&T	1-800-252-1133
BGE (CONSTRUCTION SERVICES)	410-850-4620
BGE (EMERGENCY)	410-685-1400
BUREAU OF UTILITIES	410-313-4400
COLONIAL PIPELINE CO.	410-745-1340
MISS UTILITY	1-800-251-7777
STATE HIGHWAY ADMINISTRATION	410-531-5533
VERIZON	1-800-743-0033/410-224-9210
- TREES AND SHRUBS ARE TO BE PROTECTED FROM DAMAGE TO THE MAXIMUM EXTENT. TREES AND SHRUBS LOCATED WITHIN THE CONSTRUCTION STRIP ARE NOT TO BE REMOVED OR DAMAGED BY THE CONTRACTOR.
- THE CONTRACTOR SHALL REMOVE TREES, STUMPS AND ROOTS ALONG THE LINE OF EXCAVATION. PAYMENT FOR SUCH REMOVAL SHALL BE INCLUDED IN THE UNIT PRICE BID FOR CONSTRUCTION OF THE MAIN.
- THE CONTRACTOR SHALL NOTIFY THE BUREAU OF HIGHWAYS, HOWARD COUNTY, AT (410)-313-1450 AT LEAST FIVE WORKING DAYS BEFORE OPEN CUTTING OR BORING/JACKING OF ANY COUNTY ROAD FOR LAYING WATER/SEWER MAINS OR HOUSE CONNECTIONS. THE APPROVAL OF THESE DRAWINGS WILL CONSTITUTE COMPLIANCE WITH DPW REQUIREMENTS PER SECTION 18.11(A) OF THE HOWARD COUNTY CODE.

PART II WATER

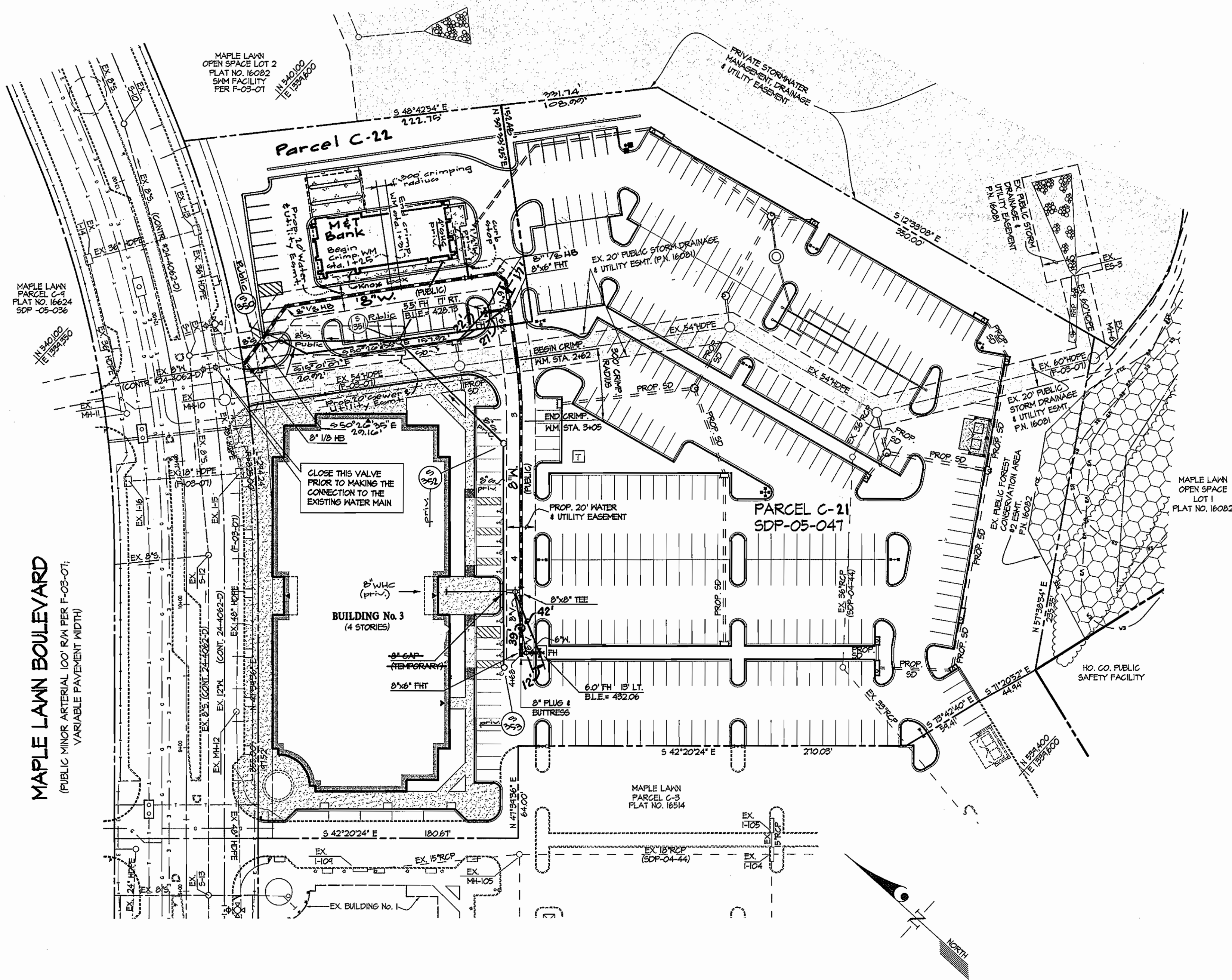
- ALL WATER MAINS SHALL BE D.I.P. CLASS 52 UNLESS OTHERWISE NOTED.
- TOPS OF ALL WATER MAINS SHALL HAVE A MINIMUM OF 3'-6" OF COVER UNLESS OTHERWISE NOTED.
- VALVES ADJACENT TO TEES SHALL BE STRAPPED TO TEES.
- ALL FITTINGS SHALL BE BUTTRESSED OR ANCHORED WITH CONCRETE IN ACCORDANCE WITH STANDARD DETAILS UNLESS OTHERWISE PROVIDED FOR ON THE DRAWINGS.
- FIRE HYDRANTS SHALL BE SET TO THE BURY LINE ELEVATIONS SHOWN ON THE DRAWINGS. ALL FIRE HYDRANTS SHALL BE INSTALLED IN ACCORDANCE WITH STANDARD DETAILS. THE SOIL AROUND THE FIRE HYDRANT SHALL BE COMPACTED IN ACCORDANCE WITH SECTION 1000 AND SECTION 1005 OF THE STANDARD SPECIFICATIONS.
- THE CONTRACTOR SHALL NOT OPERATE ANY WATER MAIN VALVES ON THE EXISTING WATER SYSTEM.

PART III SEWER

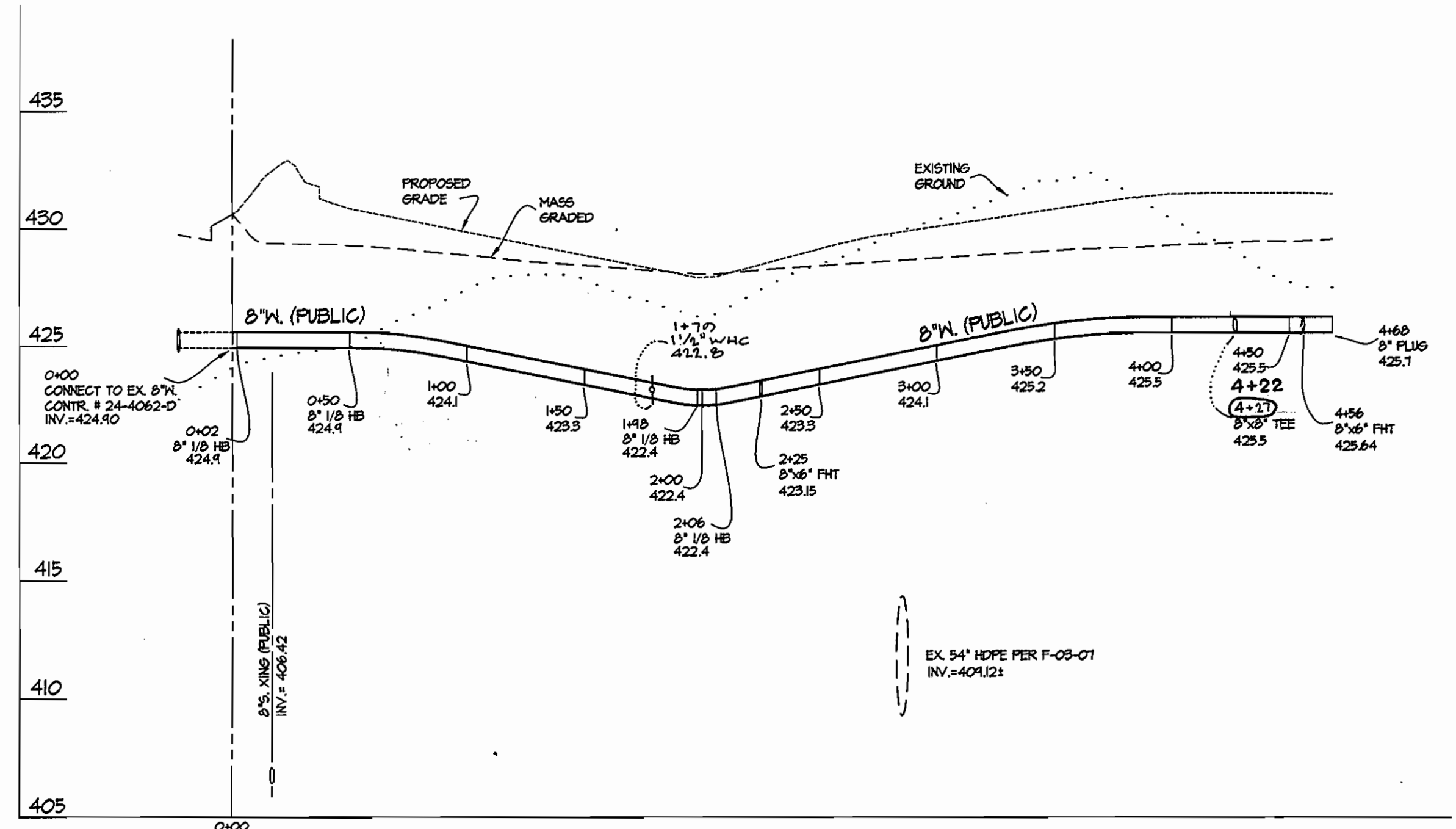
- ALL SEWER MAINS SHALL BE D.I.P. OR P.V.C. UNLESS OTHERWISE NOTED.
- ALL MANHOLES SHALL BE 4'-0" INSIDE DIAMETER UNLESS OTHERWISE NOTED.
- FORCE MAINS SHALL BE D.I.P. ONLY.
- MANHOLES SHOWN WITH 12" AND 16" WALLS ARE FOR BRICK MANHOLES ONLY.
- MANHOLES DESIGNATED H.T. IN PLAN AND PROFILE SHALL HAVE WATERTIGHT FRAME AND COVER. STANDARD DETAIL G-552. WHERE WATERTIGHT MANHOLE FRAMES AND COVERS ARE USED, SET TOP OF FRAME 1'-6" ABOVE FINISHED GRADE UNLESS OTHERWISE NOTED ON THE DRAWINGS.
- HOUSE(S) WITH THE SYMBOL "C.N.S." INDICATES THAT THE CELLAR CANNOT BE SERVED.

AS BUILT
 DATE: 12-23-05

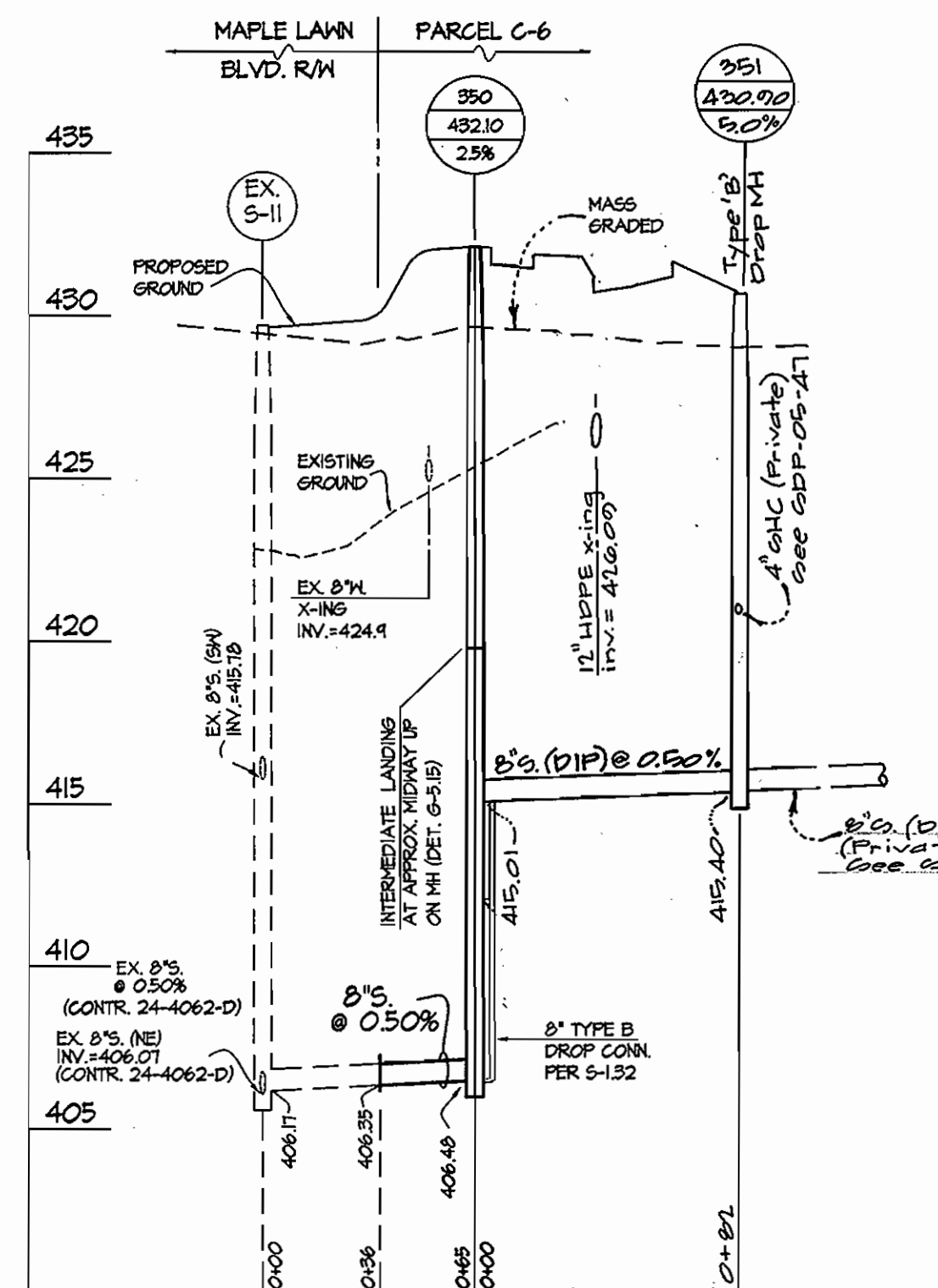
GLW FILE #03053
 03053\Pub-Wat\03053-fw-cover.dwg



PLAN VIEW
SCALE: 1" = 50'

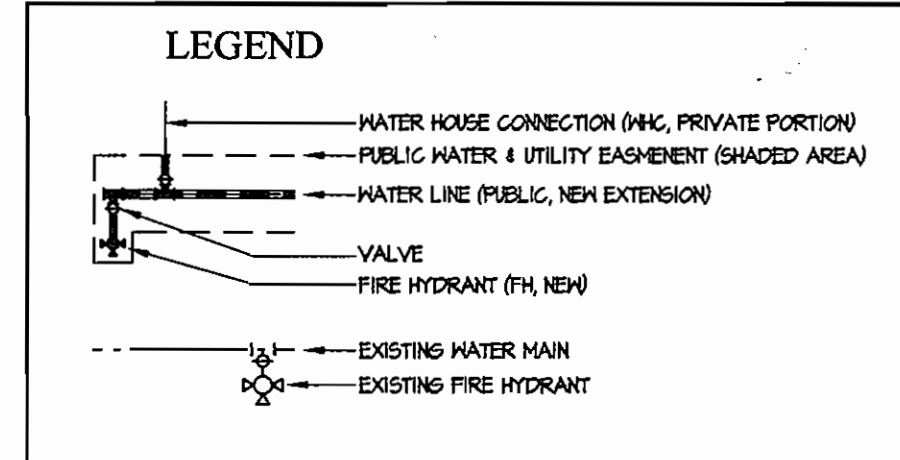


8" WATER PROFILE



SEWER PROFILE

FITTING INFORMATION		
LOCATION	FITTING	NAD 83 COORDINATES
WM STA. 0+02	8" 1/8" HB	N 539442.4023 E 1339445.6576
WM STA. 0+50	8" 1/8" HB	N 539441.9824 E 1339443.4194
WM STA. 1+48	8" 1/8" HB	N 539445.1636 E 1339460.3885
WM STA. 2+06	8" 1/8" HB	N 539446.1161 E 1339460.1745
WM STA. 2+25	8" 1/8" FHT	N 539481.7728 E 1339466.6655
WM STA. (4+22) 4+22	8" 1/8" TEE	N 539446.4928 E 1339445.9294
WM STA. 4+56	8" 1/8" FHT	N 53944.3870 E 1339423.0132
WM STA. 4+60	8" PLUG	N 539412.7091 E 1339423.1683
WM STA. 1+79	1 1/2" WHC	N 539411.3 E 1339459.75.7



AS BUILT
DATE: 12-23-05

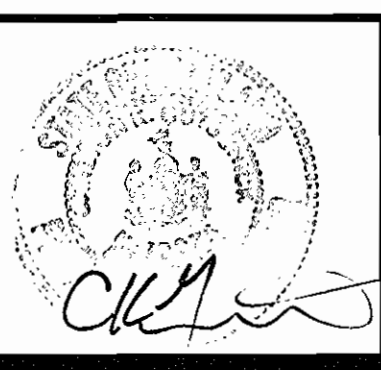
PROFILES
SCALE: 1" = 5' VERT.
1" = 50' HORIZ.

Note: The 1.5" WHC for the Warehouse (revision on 01/09/07) was never built.

DEPARTMENT OF PUBLIC WORKS
HOWARD COUNTY, MARYLAND
3-17-05
DATE

DEPARTMENT OF PLANNING AND ZONING
HOWARD COUNTY, MARYLAND
3/22/05
DATE

GLW GUTSCHICK LITTLE & WEBER, P.A.
CIVIL ENGINEERS, LAND SURVEYORS, LAND PLANNERS, LANDSCAPE ARCHITECTS
3909 NATIONAL DRIVE - SUITE 250 - BURTONSVILLE OFFICE PARK
BURTONSVILLE, MARYLAND 20866
TEL: 301-421-4024 BAL: 410-880-1820 DC/VA: 301-989-2524 FAX: 301-421-4186



DES:	DRN:	CHK:	DATE:	BY:	NO:	REVISION:	DATE:
mbt	kjp	ckg/mbt	Feb 2005				
						add sewer from 0+52 to 0+55 to Public & show easement	01/20/08
						add M&T bank & 1.5" whc	05/10/08
						add warehouse & 1.5" whc	01/09/07
						rev 8" WHC & 8" (priv.) location & prop.	10/1/05

WATER EXTENSION PLAN
SCALE: AS SHOWN
600' SCALE MAP NO. 46 BLOCK NO. 4

MAPLE LAWN FARMS
BUSINESS DISTRICT
PARCELS C-21 & C-22
HOWARD COUNTY, MARYLAND
ELECTION DISTRICT No. 5
CONTRACT No. 24-4262-D

SCALE AS SHOWN
SHEET 2 OF 2

GLW FILE #03053
03053_Pub-Wat-03053-FWS.dwg