

GENERAL NOTES

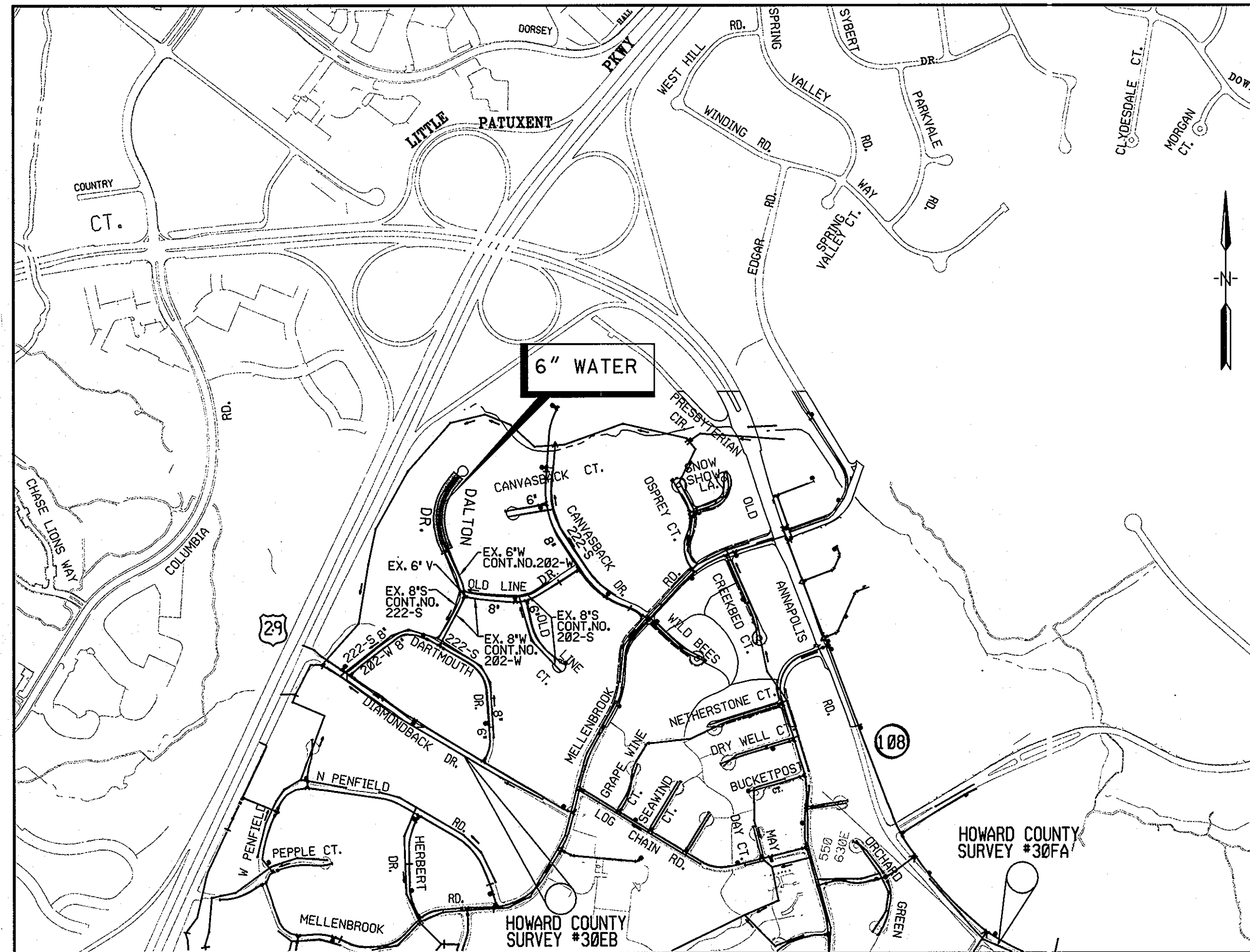
- APPROXIMATE LOCATION OF EXISTING UTILITIES ARE SHOWN. THE CONTRACTOR SHALL TAKE ALL NECESSARY PRECAUTIONS TO PROTECT EXISTING UTILITIES AND SERVICES AND MAINTAIN UNINTERRUPTED SERVICE. ANY DAMAGE INCURRED SHALL BE REPAIRED IMMEDIATELY TO THE SATISFACTION OF THE ENGINEER AT THE CONTRACTOR EXPENSE.
- TOPOGRAPHIC FIELD SURVEYS WERE PERFORMED ON NOVEMBER, 2004 BY KCI TECHNOLOGIES, INC.
- HORIZONTAL AND VERTICAL SURVEY CONTROLS:
THE COORDINATES SHOWN ON THE DRAWINGS ARE BASED ON MARYLAND STATE REFERENCE SYSTEM NAD '83/'91 AS PROJECTED BY HOWARD COUNTY GEODETIC CONTROL STATIONS NO. 30 EB AND 30 FA.
ALL VERTICAL CONTROLS ARE BASED ON NGVD'29. VERTICAL CONTROLS PROVIDED ON THE DRAWINGS ARE IRON BARS.
- ALL PIPE ELEVATIONS SHOWN ARE INVERT ELEVATIONS UNLESS OTHERWISE NOTED ON THE PLANS.
- CLEAR ALL UTILITIES BY A MINIMUM OF 12 INCHES. CLEAR ALL POLES BY 5'-0" MINIMUM OR TUNNEL AS REQUIRED UNLESS OTHERWISE NOTED. THE OWNER HAS CONTACTED THE UTILITY COMPANIES AND HAS MADE ARRANGEMENTS FOR BRACING OF POLES AS SHOWN ON THE DRAWINGS. IN THE EVENT THE CONTRACTOR'S WORK REQUIRES THE BRACING OF ADDITIONAL POLES, ANY COST INCURRED BY THE OWNER FOR THE BRACING OF ADDITIONAL POLES OR DAMAGES SHALL BE DEDUCTED FROM MONEY OWED THE CONTRACTOR. THE CONTRACTOR SHALL COORDINATE WITH THE UTILITY COMPANIES TO SCHEDULE THE BRACING OF THE POLES.
- FOR DETAILS NOT SHOWN ON THE DRAWINGS, AND FOR MATERIALS AND CONSTRUCTION METHODS, USE HOWARD COUNTY DESIGN MANUAL, VOLUME IV, STANDARD SPECIFICATIONS AND DETAILS FOR CONSTRUCTION (LATEST EDITION). THE CONTRACTOR SHALL HAVE A COPY OF VOLUME IV ON THE JOB.
- WHERE TEST PITS HAVE BEEN MADE ON EXISTING UTILITIES, THEY ARE NOTED BY THE SYMBOL [] AT THE LOCATION OF THE TEST PITS. A NOTE OR NOTES CONTAINING THE RESULTS OF THE TEST PIT OR PITS IS INCLUDED ON THE DRAWINGS. EXISTING UTILITIES IN THE VICINITY OF THE PROPOSED WORK FOR WHICH TEST PITS HAVE NOT BEEN DUG SHALL BE LOCATED BY THE CONTRACTOR TWO WEEKS IN ADVANCE OF CONSTRUCTION OPERATIONS AT HIS OWN EXPENSE.
- CONTRACTOR SHALL NOTIFY THE FOLLOWING UTILITY COMPANIES OR AGENCIES AT LEAST FIVE WORKING DAYS BEFORE STARTING WORK SHOWN ON THESE PLANS:
AT&T.....1-800-252-1133
BG&E (CONTRACTOR SERVICES).....410-850-4620
BG&E - (EMERGENCY).....410-787-9068
BUREAU OF UTILITIES (DPW).....410-313-4900
VERIZON.1-800-743-0033 / 410-224-9210
COLONIAL PIPELINE CO.410-795-1390
MISS UTILITY1-800-257-7777
STATE HIGHWAY ADMINISTRATION410-531-5533
- TREES AND SHRUBS ARE TO BE PROTECTED FROM DAMAGE TO THE MAXIMUM EXTENT. TREES AND SHRUBS LOCATED WITHIN THE CONSTRUCTION STRIP ARE NOT TO BE REMOVED OR DAMAGED BY THE CONTRACTOR.
- CONTRACTOR SHALL REMOVE TREES, STUMPS AND ROOTS ALONG LINE OF EXCAVATION. PAYMENT FOR SUCH REMOVAL SHALL BE INCLUDED IN THE UNIT PRICE BID FOR CONSTRUCTION OF THE MAIN .
- THE CONTRACTOR SHALL NOTIFY THE BUREAU OF HIGHWAYS, HOWARD COUNTY, AT (410)313-7450 AT LEAST FIVE WORKING DAYS BEFORE ANY OPEN CUT OF ANY COUNTY ROAD OR BORING/JACKING OF ANY COUNTY ROAD FOR LAYING WATER/SEWER MAINS OR HOUSE CONNECTIONS. THE APPROVAL OF THESE DRAWINGS WILL CONSTITUTE COMPLIANCE WITH DPW REQUIREMENTS PER SECTION 18.114(A) OF THE HOWARD COUNTY CODE.

WATER NOTES

- ALL WATER MAINS SHALL BE D.I.P CLASS 52 UNLESS OTHERWISE NOTED.
- TOPS OF ALL WATER MAINS SHALL HAVE A MINIMUM OF 3'-6" OF COVER UNLESS OTHERWISE NOTED.
- VALVES ADJACENT TO TEES SHALL BE STRAPPED TO TEES.
- ALL FITTINGS SHALL BE BUTTRESSED OR ANCHORED WITH CONCRETE IN ACCORDANCE WITH THE STANDARD DETAILS UNLESS OTHERWISE PROVIDED FOR ON THE DRAWINGS.
- FIRE HYDRANTS SHALL BE SET TO BURY LINE ELEVATIONS SHOWN ON THE DRAWINGS. ALL FIRE HYDRANTS SHALL BE INSTALLED IN ACCORDANCE WITH STANDARD DETAILS. THE SOIL AROUND THE FIRE HYDRANT SHALL BE COMPACTED IN ACCORDANCE WITH SECTION 1000 AND SECTION 1005 OF THE STANDARD SPECIFICATIONS.
- THE CONTRACTOR SHALL NOT OPERATE ANY WATER MAIN VALVES ON THE EXISTING WATER SYSTEM.
- THE CONTRACTOR IS RESPONSIBLE FOR CONTACTING THE VARIOUS RESIDENTS AND COORDINATING HIS WORK ACTIVITIES SO AS NOT TO NEGATIVELY IMPACT CONNECTED CUSTOMERS. THE REHABILITATION OF WATER MAIN SHALL CAUSE A MINIMUM DISTURBANCE TO THE EXISTING RESIDENTS AND NOTIFICATION TO THE RESIDENTS OF ANY 'INTERRUPTION OF SERVICE' SHALL BE THE RESPONSIBILITY OF THE CONTRACTOR. THE COUNTY REQUIRES THAT THE CONTRACTOR NOTIFY EACH RESIDENTS AFFECTED BY LETTER OR DOOR TAGS OF THE IMPENDING SERVICE INTERRUPTION AT LEAST 72 HOURS IN ADVANCE OF THE PLANNED INTERRUPTION.
- THE CONTRACTOR SHALL NOTIFY THE BUREAU OF UTILITIES HOWARD COUNTY, 15 DAYS PRIOR TO WATER MAIN SHUT DOWNS.
- THE CONTRACTOR SHALL RETURN ALL SALVAGED FIRE HYDRANTS, FRAMES AND COVERS, VALVES, ROADWAY BOXES TO THE BUREAU OF UTILITIES AT 8250 MONTGOMERY RD. COLUMBIA, MD 21045.
- THE CONTRACTOR SHALL PROVIDE SURVEY CONSTRUCTION STAKEOUT FOR ALL NECESSARY LINES, GRADES AND ELEVATION OF THE PROPOSED FACILITIES.
- ALL VALVES SHALL BE CONSTRUCTED IN ACCORDANCE WITH HOWARD COUNTY STANDARD SPECIFICATIONS. SEE STANDARD DETAILS FOR ROADWAY VALVE BOX DIMENSIONS AND VALVE KEY EXTENSIONS.
- ALL WATER HOUSE CONNECTIONS (WHC) SHALL BE FOR OUTSIDE METER SETTINGS.

DALTON DRIVE WATER MAIN HOWARD COUNTY, MARYLAND

DEPARTMENT OF PUBLIC WORKS
CAPITAL PROJECT No. W-8266
CONTRACT No. 44-4261



LOCATION MAP

SCALE: 1" = 600'

TYPE OF BUILDING: RESIDENTIAL

NUMBER OF PARCELS: 7

NUMBER OF WATER HOUSE CONNECTIONS: 7

DRAINAGE AREA: LITTLE PATUXENT

PRESSURE ZONE: 550

WATER TEST GRADIENT

FOR COUNTY USE ONLY
WATER CODE: F08

HOWARD COUNTY GEODETIC SURVEY CONTROL

THE HORIZONTAL AND VERTICAL DATUM BASED ON
NAD83(91) (HORIZONTAL)
NGVD29 (VERTICAL)

30 EB N 569838.42
E 1358288.13
ELEV.381.26

30 FA N 568621.33
E 1361563.98
ELEV.441.62

INDEX OF SHEETS

SHEET NO.	DESCRIPTION
1	TITLE SHEET
2	6" WATER MAIN PLAN AND PROFILE
3	EROSION AND SEDIMENT CONTROL NOTES AND DETAILS

QUANTITIES

ITEM	UNIT	ESTIMATE	AS-BUILT	MATERIAL SUPPLIER
6" WATER	L.F.	560'	560'	BELAIRROAD SUPPLY
1" WHC	L.F.	175'	175'	" " "
FH	EACH	2	2	" " "
6" VALVE	EACH	3	3	" " "

NAME OF UTILITY CONTRACTOR: W. F. WILSON

CHECKBOX

AS-BUILT DATE: 3-15-06

SURVEY AND DRAFTING DIVISION

LEGEND

- DECIDUOUS TREE
- CONIFEROUS TREE
- TRAVERSE POINT
- WATER MAIN
- FIRE HYDRANT
- VALVE
- WATER HOUSE CONNECTION
- EXISTING FIRE HYDRANT
- EXISTING VALVE
- EXISTING WATER MAIN
- EXISTING GAS MAIN
- EXISTING OVERHEAD SERVICE

AS BUILTS

PLOTTED: 10:15 AM on Tuesday, May 10, 2006
BY: Chander, Kanto, Division: Environmental Engineering
FILE: H:\2005\10\25\2506\44-4261\DWG\44-4261-01.dwg

DEPARTMENT OF PUBLIC WORKS
HOWARD COUNTY, MARYLAND

John A. ... 5/23/05
DIRECTOR OF PUBLIC WORKS DATE

Ruth ... 5-19-05
CHIEF, BUREAU OF UTILITIES DATE

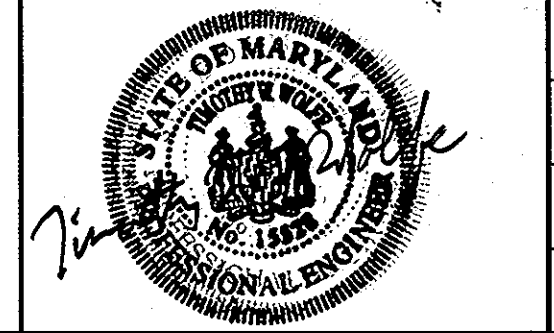
Paul ... 5/17/05
CHIEF, BUREAU OF ENGINEERING DATE

C. ... 5-17-05
CHIEF, UTILITY DESIGN DIVISION DATE

ENGINEERS
PLANNERS
SCIENTISTS
CONSTRUCTION MANAGERS

KCI
TECHNOLOGIES

10 NORTH PARK DRIVE
HUNTS VALLEY, MD 21030
PHONE: (410) 316-7800
FAX: (410) 316-7817
www.kci.com



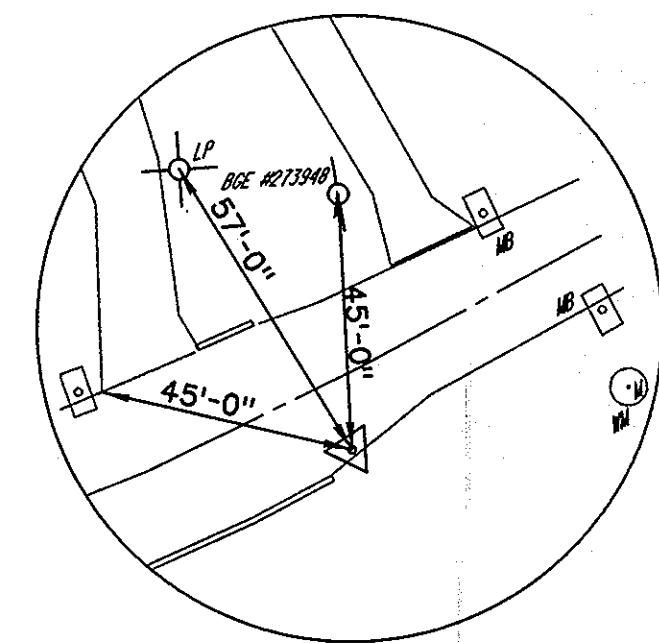
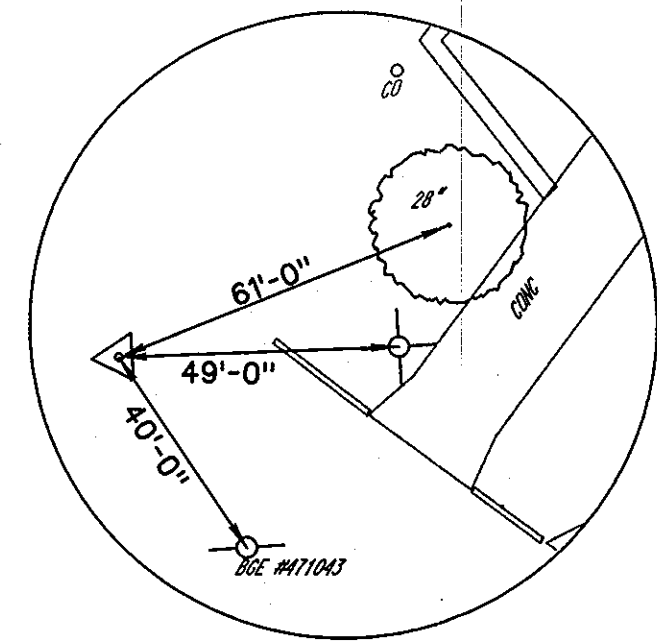
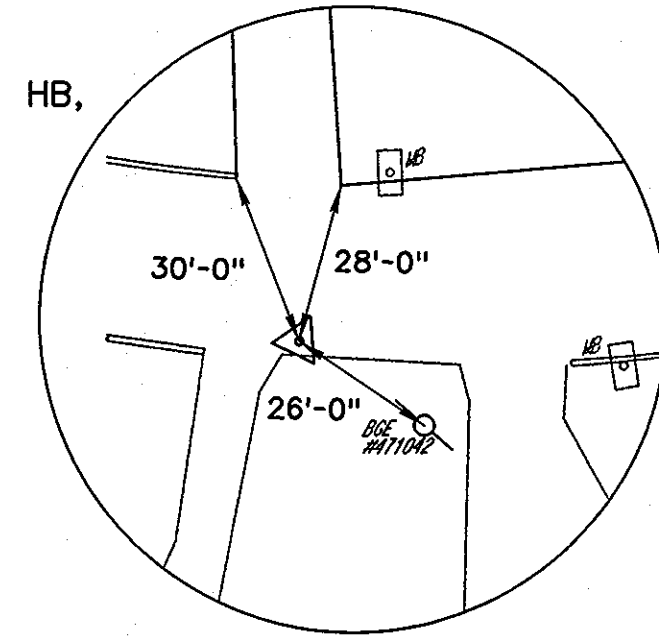
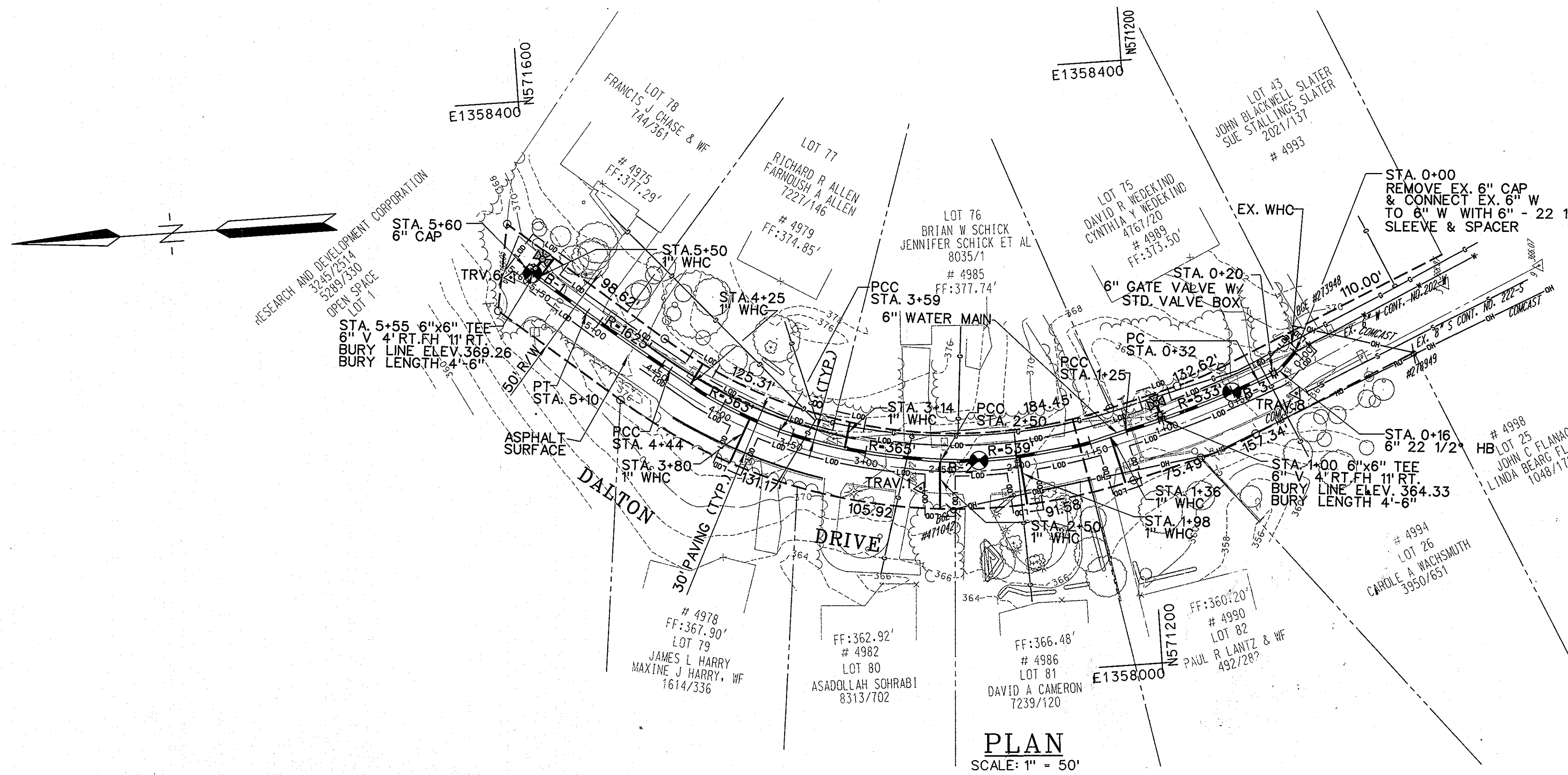
DES: GW			
DRN: CK			
CHK: TW			
DATE: APRIL, 05	LFN	AS BUILT	3/5/06
BY	NO.	REVISION	DATE

TITLE SHEET

600' SCALE MAP NO. 30 BLOCK NO. 10

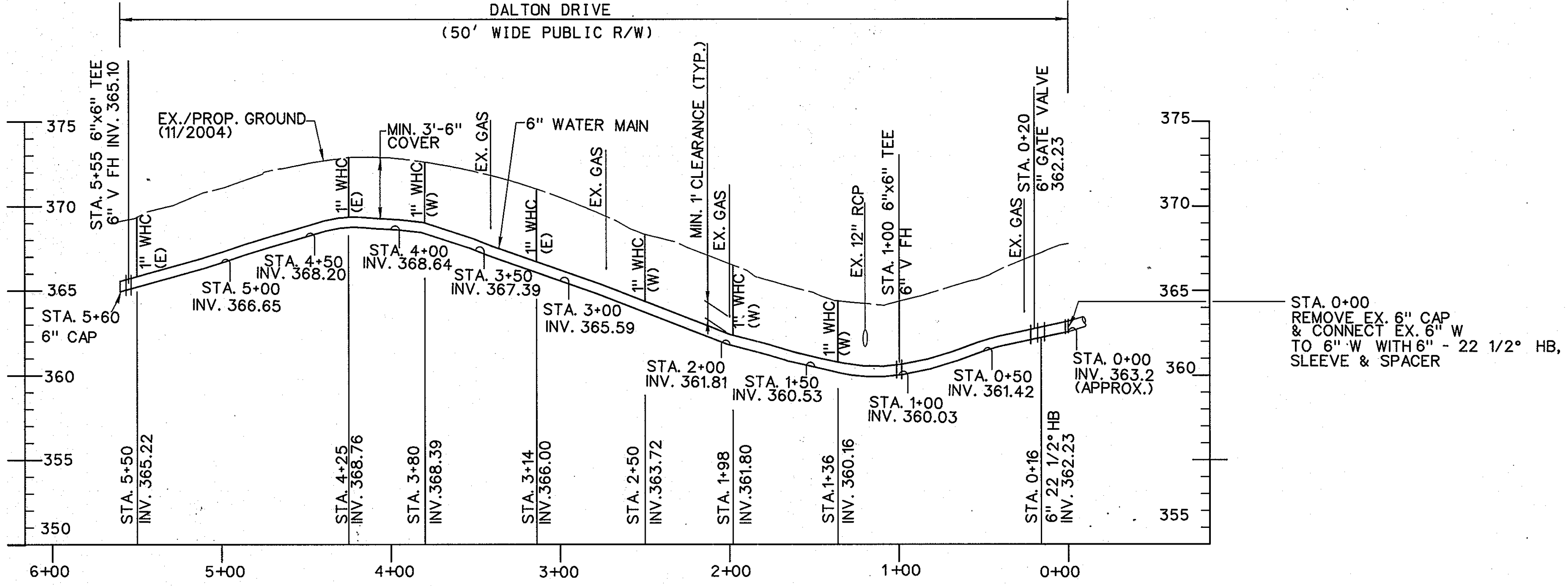
DALTON DRIVE WATER MAIN
CAPITAL PROJECT No. W-8266
CONTRACT No. 44-4261
ELECTION DISTRICT NO. 6 HOWARD COUNTY, MARYLAND

SCALE AS SHOWN
SHEET 1 OF 3



TRAVERSE COORDINATE SCHEDULE			
NUMBER	NORTHING	EASTING	ELEVATION
TRAV. 1	571351.60	1358126.42	368.72
TRAV. 6	571612.78	1358284.02	369.05
TRAV. 8	571099.24	1358172.12	367.32

AS BUILT		
TO	FROM	DISTANCE
WHC # 4975	FIRE HYDRANT STA. 5+55	9.4 FT
WHC # 4975	FIRE HYDRANT VALVE STA. 5+55	17.6 FT
WHC # 4979	WHC # 4978	67.4 FT
WHC # 4979	LT. CORNER OF HOUSE	71.9 FT
WHC # 4979	RT. CORNER OF HOUSE	83.7 FT
WHC # 4978	WHC # 4982	94.4 FT
WHC # 4982	WHC # 4985	52.2 FT
WHC # 4982	POLE # 471042	59.0 FT
WHC # 4985	POLE # 471042	90.0 FT
WHC # 4986	POLE # 471042	49.5 FT
WHC # 4986	INLET SAME SIDE OF ROADWAY	80.0 FT
WHC # 4990	FIRE HYDRANT STA. 1+00	42.8 FT
WHC # 4990	FIRE HYDRANT VALVE STA. 1+00	33.3 FT
FIRE HYDRANT 1+00	FIRE HYDRANT VALVE STA. 1+00	9.5 FT
6" VALVE STA. 0+20	FIRE HYDRANT VALVE STA. 1+00	80.4 FT
6" VALVE STA. 0+20	FIRE HYDRANT STA. 1+00	80.5 FT
FIRE HYDRANT VALVE 5+55	FIRE HYDRANT STA. 5+55	9.2 FT



WATER MAIN STAKEOUT COORDINATES SCHEDULE			
STATION	FITTING	NORTHING	EASTING
0+00	22 1/2° BEND	571098.18	1358199.16
0+16	22 1/2° BEND	571109.51	1358187.89
0+20	GATE VALVE	571113.25	1358186.31
0+32	PC	571124.07	1358182.13
1+00	6x6 TEE	571189.04	1358160.94
1+25	PCC	571213.24	1358154.97
2+50	PCC	571337.10	1358143.95
3+59	PCC	571442.33	1358170.84
4+44	PCC	571517.16	1358219.15
5+10	PT	571564.36	1358257.07
5+55	6x6 TEE	571598.40	1358285.78
5+60	CAP	571602.46	1358289.28

AS BUILTS

PLOTTED: 10:16 AM on Tuesday, May 10, 2005
 BY: Chandler, Kentia, Division: Environmental Engineering
 FILE: M:\2005\05\05\44-4266\WATER MAIN\AS BUILTS.dwg

DEPARTMENT OF PUBLIC WORKS
 HOWARD COUNTY, MARYLAND
 Director of Public Works: *Raymond* 5/13/05
 Chief, Bureau of Engineering: *Paul Seaton* 5/17/05
 Chief, Bureau of Utilities: *Paul Seaton* 5-19-05
 Chief, Utility Design Division: *Paul Seaton* 5-17-05

KCI TECHNOLOGIES
 ENGINEERS, PLANNERS, SCIENTISTS, CONSTRUCTION MANAGERS
 10 North Park Drive
 Hunt Valley, MD 21039
 Phone: (410) 316-7800
 Fax: (410) 316-7817
 www.kci.com

STATE OF MARYLAND
 PROFESSIONAL ENGINEER
 No. 1524

DES: GW	
DRN: CK	
CHK: TW	
DATE: APRIL 05	BY: NO.
LFN	AS BUILT
REVISION	3-15-05

6" WATER MAIN PLAN AND PROFILE
 SCALE: 600' SCALE MAP NO. 30 BLOCK NO. 10

DALTON DRIVE WATER MAIN
 CAPITAL PROJECT No. W-8266
 CONTRACT No. 44-4261
 ELECTION DISTRICT NO. 6 HOWARD COUNTY, MARYLAND
 SCALE AS SHOWN SHEET 2 OF 3

