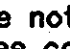
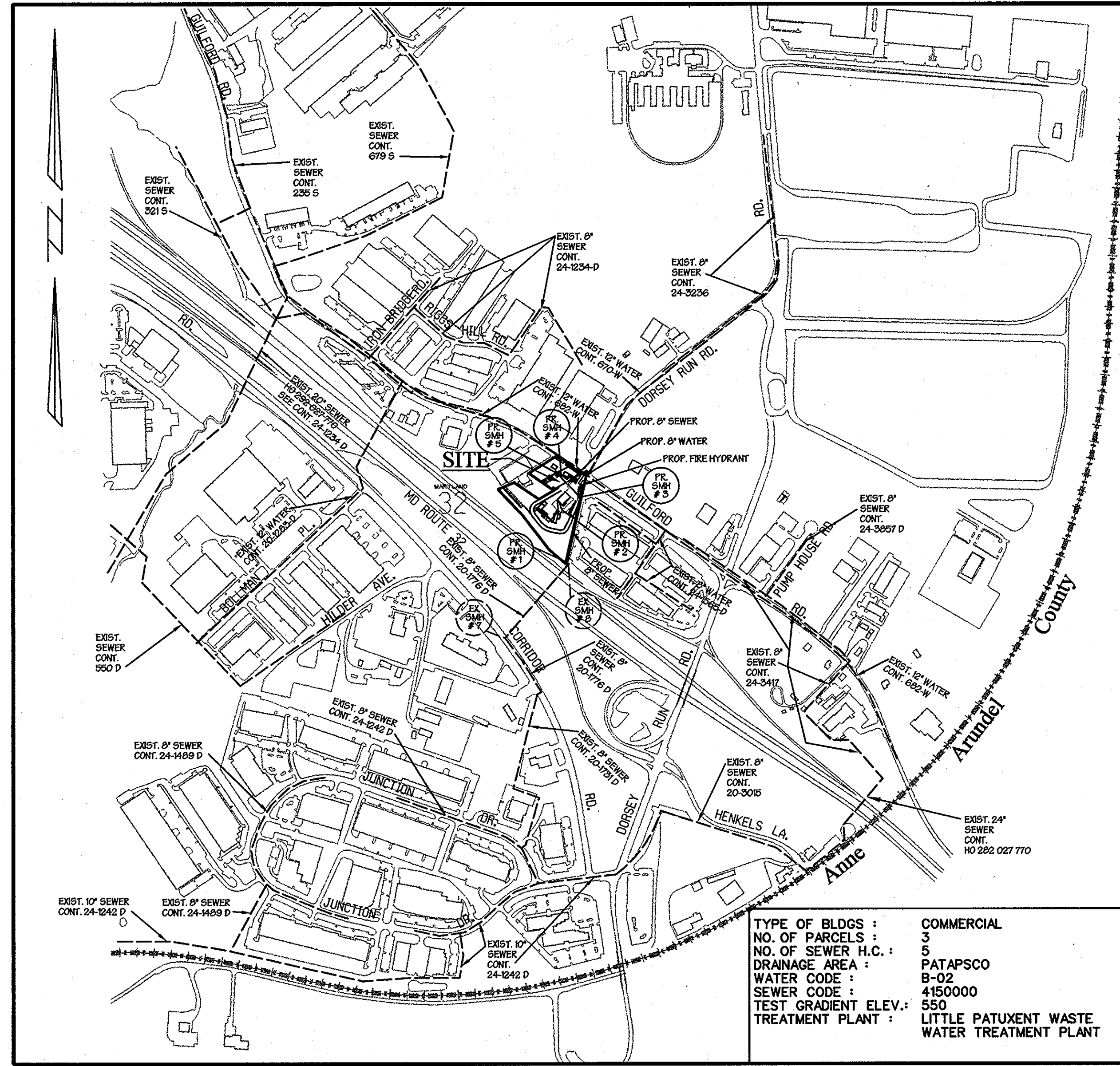


GENERAL NOTES

- Part I**
- Approximate location of existing mains are shown. The contractor shall take all necessary precautions to protect existing mains and services and maintain uninterrupted supply. Any damage incurred shall be repaired immediately to the satisfaction of the Engineer at the Contractor's expense.
 - All horizontal controls are based on Maryland State Coordinates, NAD 83 / 91.
 - All vertical controls are based on NAVD 88.
 - All pipe elevations shown are invert elevations unless otherwise noted on the plans.
 - Clear all utilities by a minimum of 12". Clear all poles by 5'-0" minimum or tunnels required unless otherwise noted. The owner has contacted the utility companies and has made arrangements for bracing of poles as shown on the drawings. In the event the contractor's work requires the bracing of additional poles, any cost incurred by the owner for bracing of additional poles or damages shall be deducted from monies owed the contractor. The contractor shall coordinate with the utility companies to schedule the bracing of the poles.
 - For details not shown on the drawings, and for materials and construction methods, use Howard County Design Manual, Volume IV, Standard Specifications and Detail for Construction (Latest Edition). The contractor shall have a copy of Volume IV on the job.
 - Where test pits have been made on existing utilities, they are noted by the symbol  at the location of the test pit. A note or notes containing the results of the test pit or pits is included on the drawings. Existing utilities in the vicinity of the proposed work for which test pits have not been dug shall be located by the contractor two weeks in advance of construction operations at his own expense.
 - The contractor shall notify the following utility companies or agencies at least five working days before starting work shown on these plans:
 - AT&T 1-800-252-1133
 - BGE (Contractor Services) 410-850-4620
 - BGE (Underground Damage Control) 410-787-9068
 - Bureau of Utilities 410-313-4900
 - Colonial Pipeline Co. 410-795-1390
 - Miss Utility 1-800-257-7777
 - State Highway Administration 410-531-5533
 - Verizon 1-800-743-0033 / 410-224-9210
 - Trees and shrubs are to be protected from damage to the maximum extent. Trees and shrubs located within the construction strip are not to be removed or damaged by the contractor.
 - Contractor shall remove trees, stumps and roots along line of excavation. Payment for such removal shall be included in the unit price bid for construction of the main.
 - The contractor shall notify the Bureau of Highways, Howard County, at (410) 313-7450 at least five working days before cutting or boring/jacking of any county road for laying water/sewer mains or house connections. The approval of these drawings will constitute compliance with DPW requirements per Section 18.114(a) of the Howard County Code.

- Part II Water**
- All water mains to be D.I.P. Class 52 unless otherwise noted.
 - Tops of all water mains to have a minimum of 3'-6" cover unless otherwise noted.
 - Valves adjacent to tees shall be strapped to tees.
 - All fittings shall be buttressed or anchored with concrete in accordance
 - Fire hydrants shall be set to the bury line elevations shown on the drawings. All fire hydrants shall be installed in accordance with Standard Details. The soil around the fire hydrants shall be compacted in accordance with Section 1000 and Section 1005 of the Standard Specifications.
 - The contractor shall not operate any water main valves on the existing water system.

- Part III Sewer**
- All sewer mains shall be D.I.P. or P.V.C., unless otherwise noted.
 - All manholes shall be 4'-0" inside diameter unless otherwise noted.
 - Force mains shall be D.I.P. only.
 - Manholes shown with 12" and 16" walls are for brick manholes only.
 - Manholes designed W.T. in plan and profile shall have watertight frame and cover, Standard Detail G5.52. Where watertight manhole frames and covers are used, set top of frame 1'-6" above finished grade unless otherwise noted on the drawings.
 - House(s) with the symbol "C.N.S." indicates that the cellar cannot be served.



LOCATION MAP

SCALE : 1" = 600'

WATER AND SEWER CONSTRUCTION PLANS SCHUSTER CONCRETE

Parcel No's 28,29,32 and 108
 6th ELECTION DISTRICT HOWARD COUNTY, MARYLAND
 CONTRACT NO. 24-4249-D

INDEX OF SHEETS

| SHEET NO. | TITLES |
|-----------|---|
| 1 | COVER SHEET, GENERAL NOTES & LOCATION MAP |
| 2 | PLAN VIEW, WATER & SEWER PROFILES |

Benchmarks

Pt. #48G4, ELEVATION 228.58 -
 Howard Co. Geodetic Control
 Northing : 532,530.28
 Easting : 1,370,623.78
 NAD83
 BRASS OR ALUMINUM DISK SET
 ON TOP CONCRETE COLUMN.

Pt. #48G8, ELEVATION 206.63 -
 Howard Co. Geodetic Control
 Northing : 531,519.241
 Easting : 1,371,653.84
 NAD83
 BRASS OR ALUMINUM DISK SET
 ON TOP CONCRETE COLUMN.

QUANTITIES

| ITEMS | AS-BUILT | | | |
|--|----------------------|------------|--------------|------------------------|
| | QUANTITIES ESTIMATED | QUANTITIES | TYPE | MANUFACTURER/ SUPPLIER |
| 8" P.V.C. Sanitary Sewer | 740 L.F. | 740 L.F. | PVC / SDR-35 | JM EAGLE / BRS |
| 4" P.V.C. Sewer House Connection | 10 L.F. | 10 L.F. | PVC / SDR-35 | JM EAGLE / BRS |
| 4.0' Std. Precast Sanitary Manholes (G 5.12) | 1 Each | 1 EACH | SANITARY | ATLANTIC CONC. / BRS |
| 4.0' Std. Precast Sanitary Manholes (G 5.12) TYPE 'A' DROP (S1.32) | 3 Each | 3 EACH | SANITARY | ATLANTIC CONC. / BRS |
| 4.0' Std. Precast Sanitary Manholes (G 5.12) TYPE 'B' DROP (S1.32) | 1 Each | 1 EACH | SANITARY | ATLANTIC CONC. / BRS |
| 8" D.I.P. Water Main | 75 L.F. | 75 L.F. | CLASS 54 | GRIFFIN PIPE / BRS |
| 6" D.I.P. Water Main | 19 L.F. | 19 L.F. | CLASS 54 | GRIFFIN PIPE / BRS |
| Fire Hydrant | 1 Each | 1 EACH | --- | MULLER / BRS |
| 12" x 8" Tapping Sleeve & Valve | 1 Each | 1 EACH | --- | ROMAC INDUSTRIES / BRS |
| 8" Valve & Roadway Box | 1 Each | 1 EACH | --- | CAPITAL FOUNDRY / BRS |
| 6" Valve & Roadway Box | 1 Each | 1 EACH | --- | CAPITAL FOUNDRY / BRS |
| 8" x 6" Tee | 1 Each | 1 EACH | --- | STAR PIPE / BRS |
| 8" Cap & Buttress | 1 Each | 1 EACH | --- | STAR PIPE / BRS |

NAME OF UTILITY CONTRACTOR : BURGEMEISTER - DELL, INC.
 SURVEY AND DRAFTING DIVISION AS-BUILT DATE 6-5-2013

SEDIMENT CONTROL MEASURES FOR THIS CONTRACT WILL BE IMPLEMENTED IN ACCORDANCE WITH SECTION 219 OF THE STANDARD SPECIFICATIONS, SDP 05-030

THE DEVELOPMENT PLAN IS APPROVED FOR SOIL EROSION AND SEDIMENT CONTROL BY THE HOWARD SOIL CONSERVATION DISTRICT.

APPROVED: *John R. Robertson* 2/24/09
 HOWARD SOIL CONSERVATION DISTRICT DATE

REVIEWED FOR HOWARD SOIL CONSERVATION DISTRICT AND MEETS TECHNICAL REQUIREMENTS.

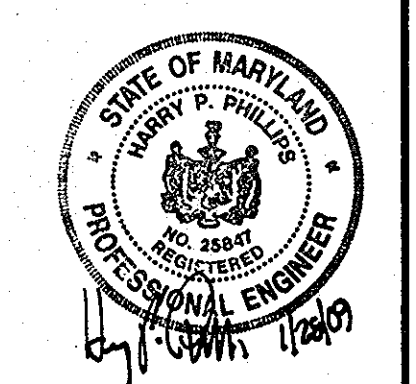
U.S. SOIL CONSERVATION SERVICE DATE

OWNER / DEVELOPER
SCHUSTER CONCRETE
 52 NEW PLANT COURT P.O. BOX 604
 OWINGS MILLS, MARYLAND 21117

DEPARTMENT OF PUBLIC WORKS
 HOWARD COUNTY, MARYLAND
Steve Chen 2/10/09
 CHIEF, BUREAU OF UTILITIES DATE

DEPARTMENT OF PLANNING & ZONING
 HOWARD COUNTY, MARYLAND
W. Vanaman 2/25/09
 CHIEF, DEVELOPMENT M.G. DATE
 ENGINEERING DIVISION

MARTIN & PHILLIPS
PHILLIPS
 DESIGN ASSOCIATES, INC.
 Land Planning, Civil Engineering, Landscape Architecture, Development Consulting, Zoning
 222 Rocky Avenue, Suite 101
 Towson, Maryland 21284
 410-321-6444



DESIGNED :
 DRAFTED :
 CHECKED :

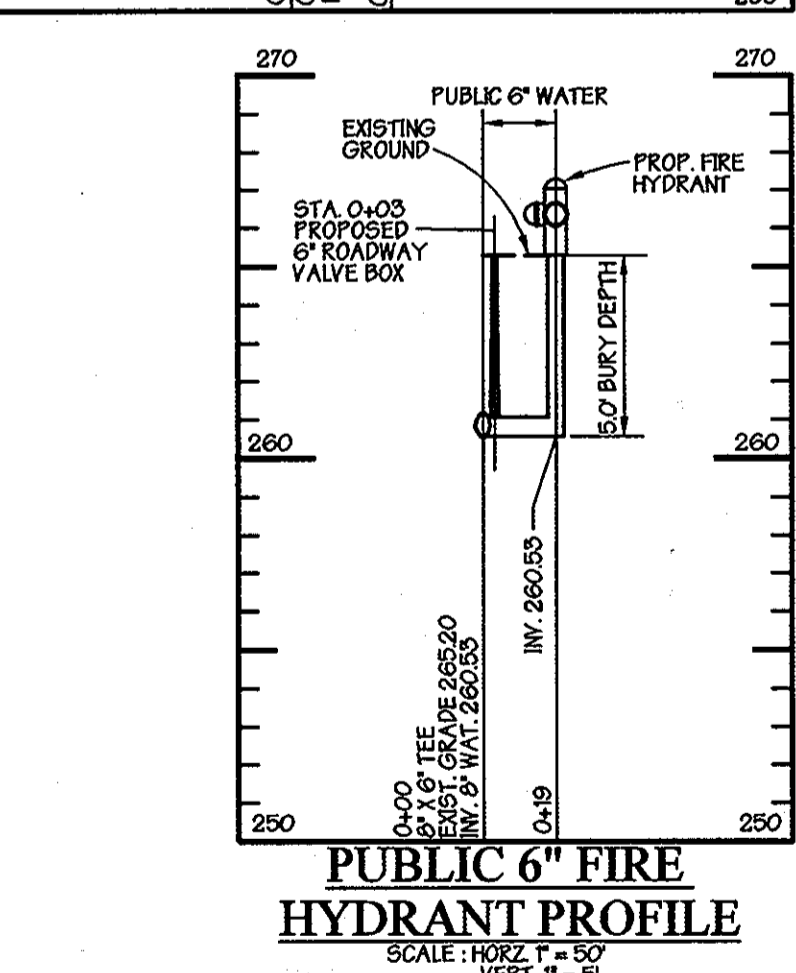
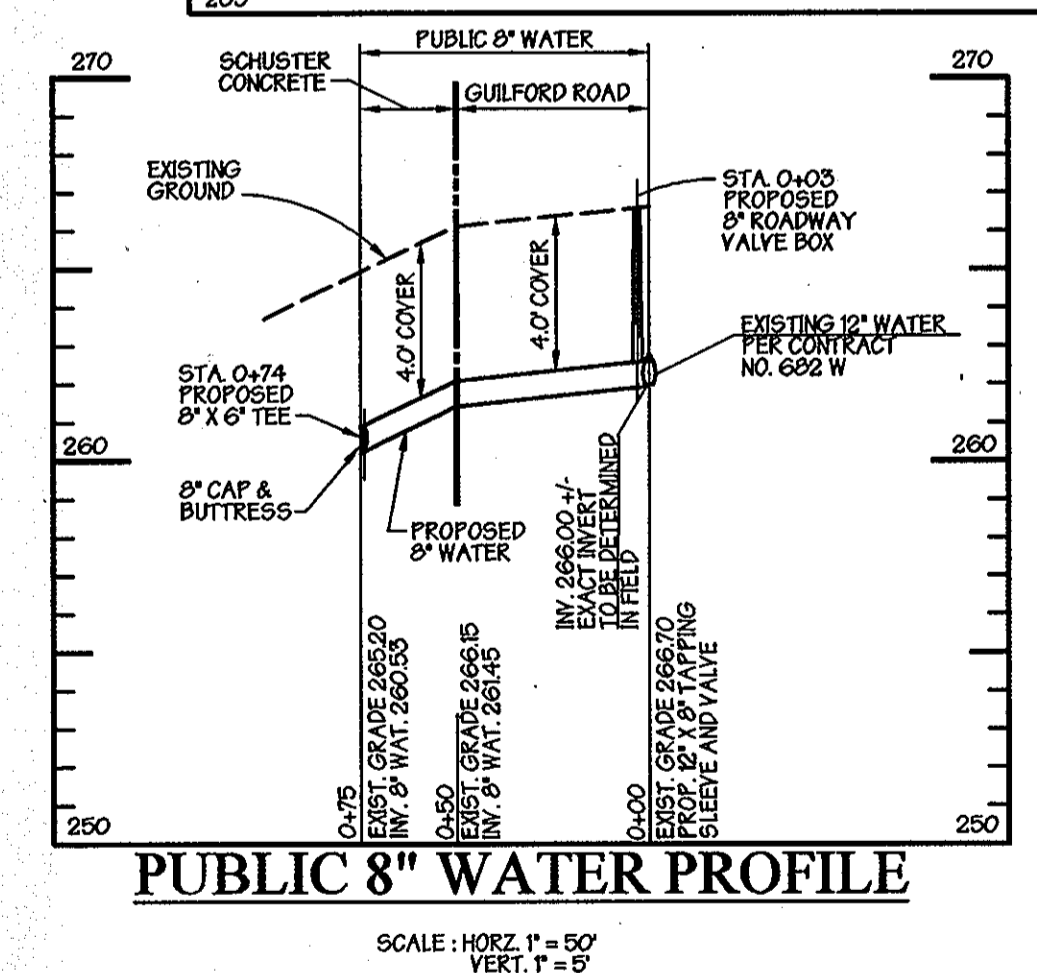
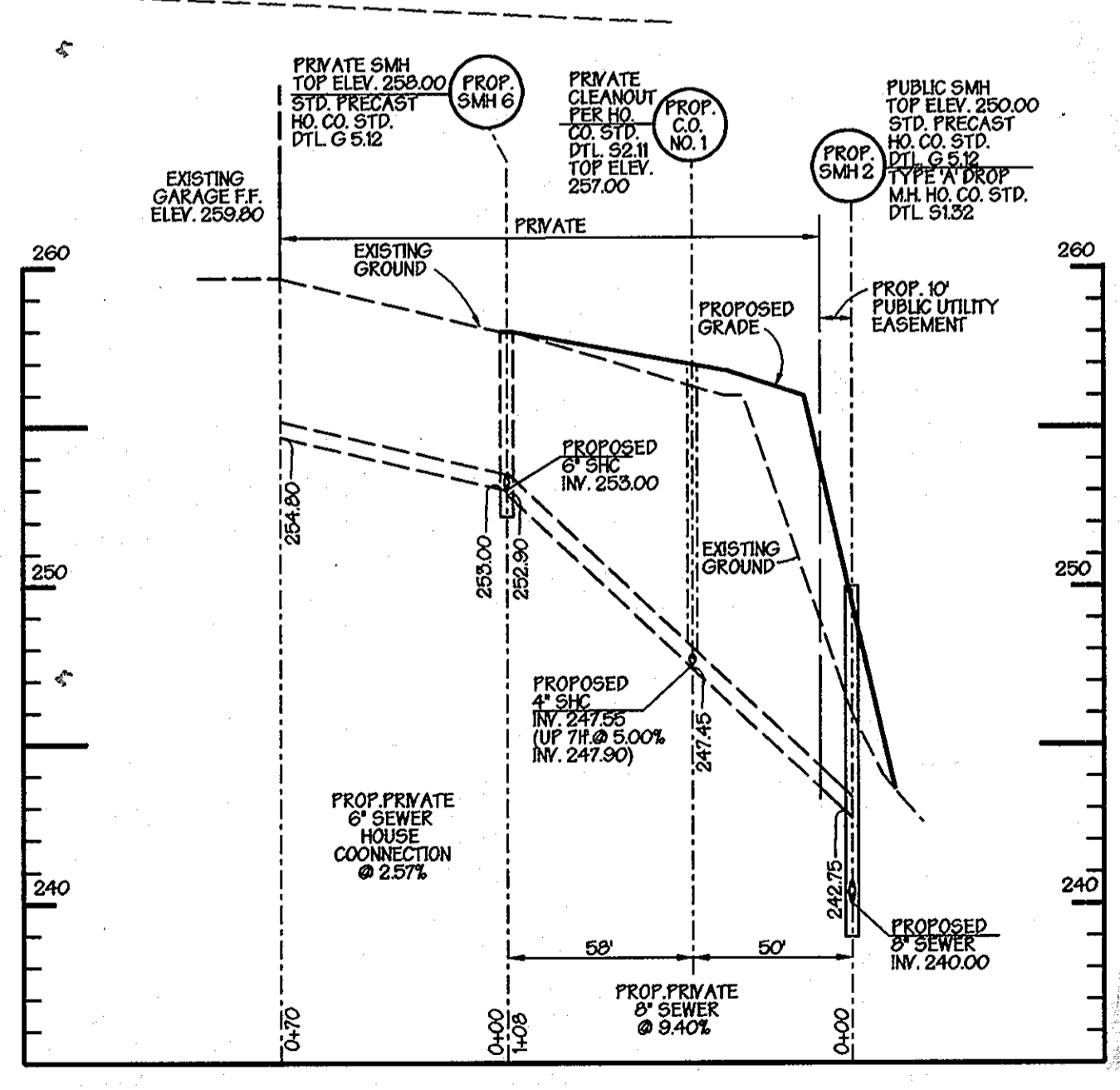
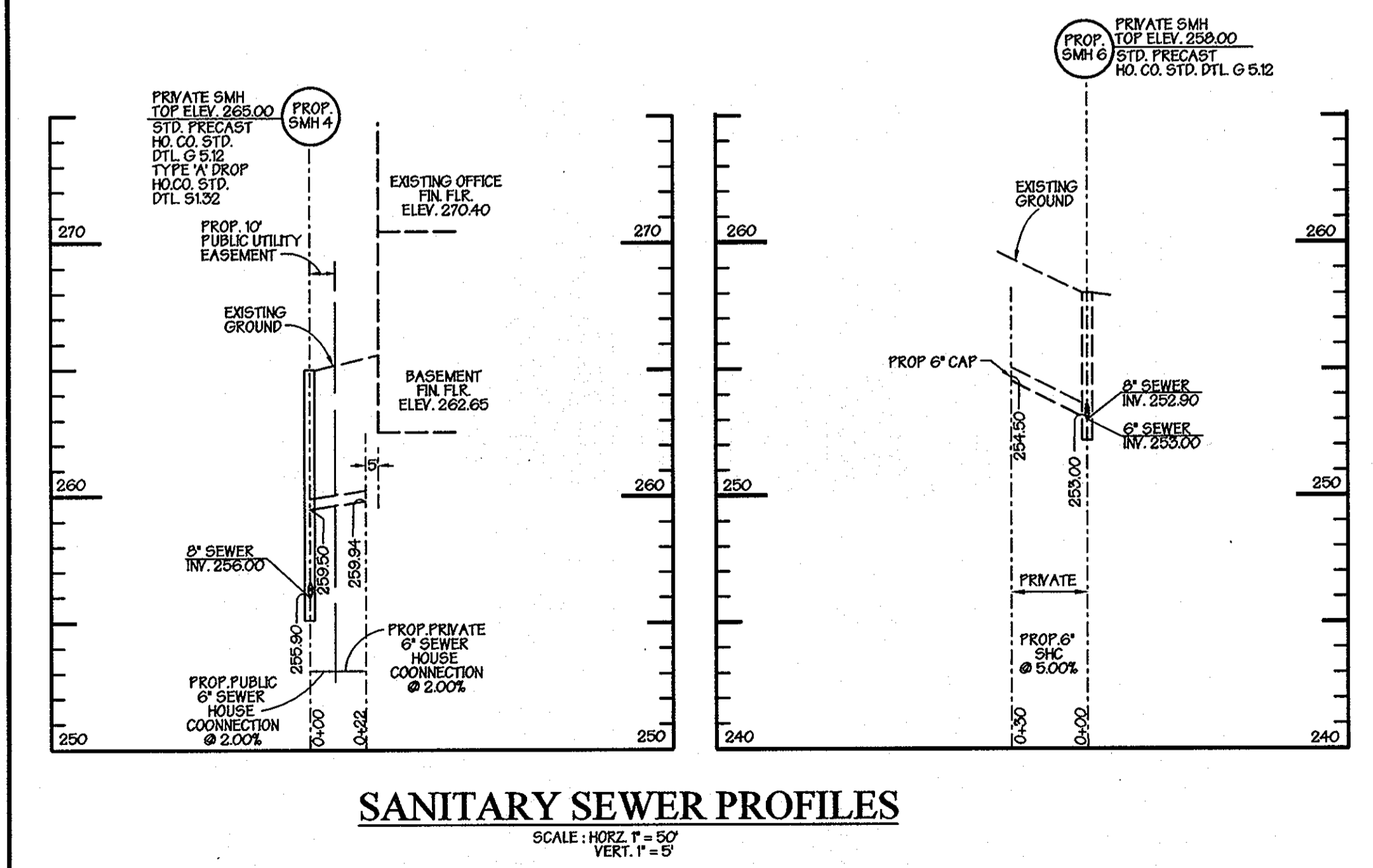
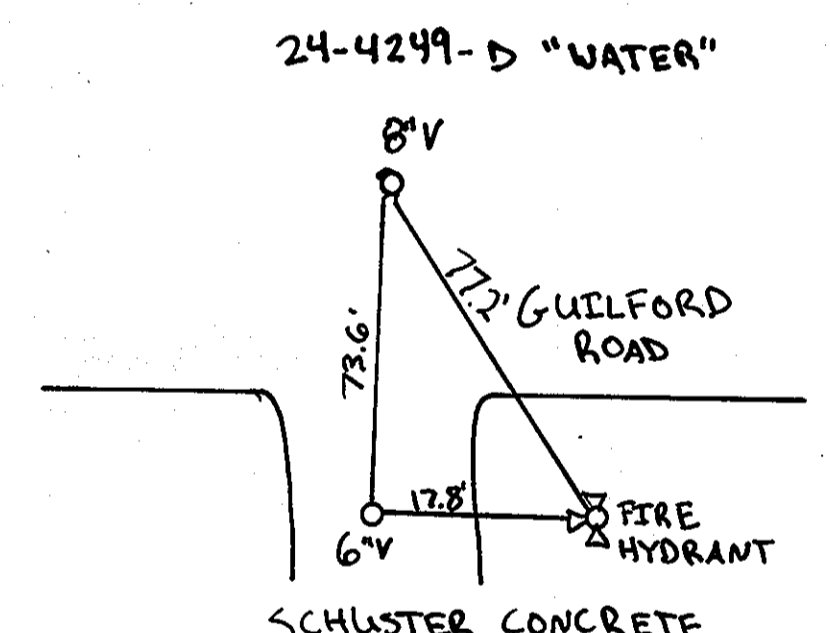
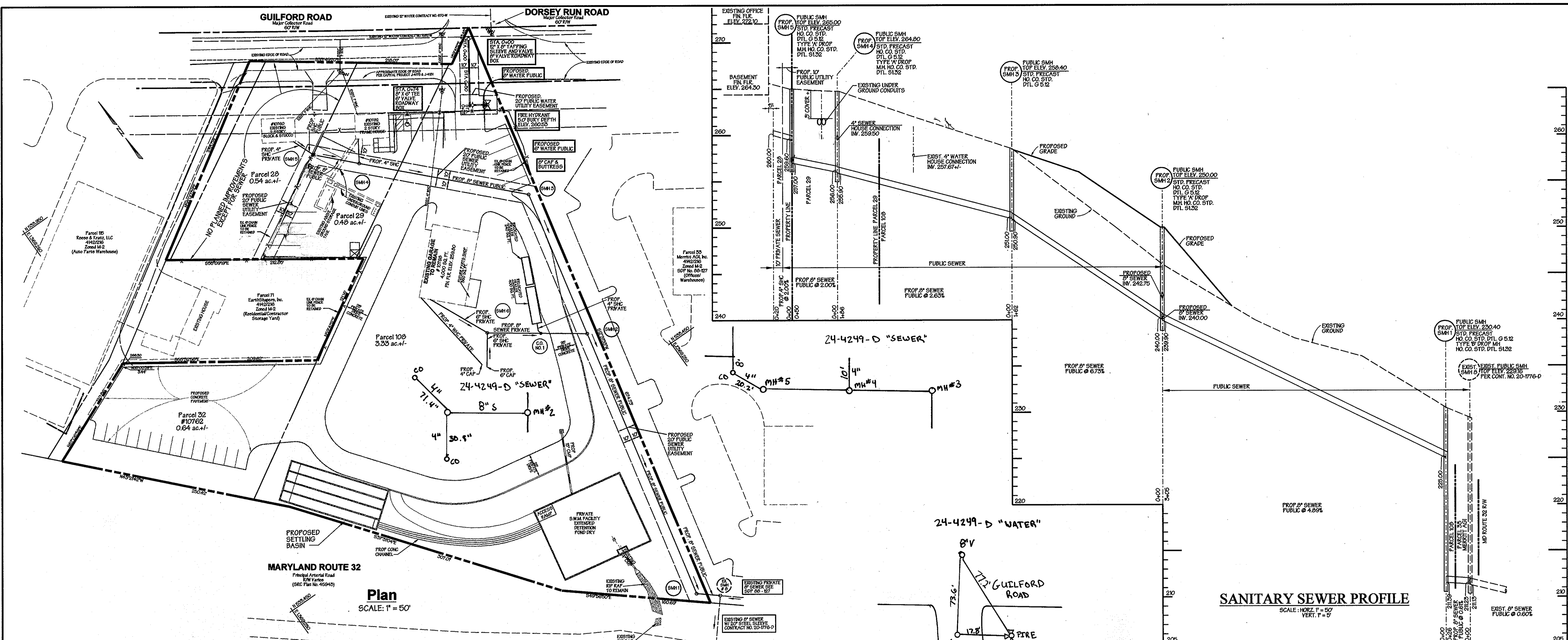
COVER SHEET, GENERAL NOTES & LOCATION MAP

CONTRACT NO. 24-4249-D
 600 SCALE MAP NO. 48
 BLOCK NO. 13.14

| BY | NO. | REVISION | DATE |
|--------|-----|--|----------|
| K.P.P. | 1 | REVISED QUANTITIES FOR 8" & 4" P.V.C., 8" D.I.P., Precast Sanitary Manholes (G 5.12) | 01/26/09 |
| KCI | 2 | AS-BUILT | 6/14/13 |

PUBLIC WATER AND SEWER MAIN SCHUSTER CONCRETE

Parcel No's 28,29,32 and 108
 CONTRACT NO. 24-4249-D
 HOWARD COUNTY, MARYLAND
 ELECTION DISTRICT *06
 SEPTEMBER 13, 2004
 SHEET 1 OF 2
 P/N 10142-sewertitle.s01



| BY | NO. | REVISION | DATE |
|--------|-----|---|----------|
| K.P.P. | 1 | REVISED FH LOCATION, PUBLIC 8" AND 6" WATER PROFILES & ADDED SAN LINE FROM MH-5 TO MH-6 IN PLAN AND PROFILE | 02/26/09 |
| KCR | 2 | As-BUILT | 6/14/13 |

DEPARTMENT OF PUBLIC WORKS
HOWARD COUNTY, MARYLAND

Steve C. ...
CHIEF, BUREAU OF UTILITIES

DEPARTMENT OF PLANNING & ZONING
HOWARD COUNTY, MARYLAND

Mr. ...
CHIEF, DEVELOPMENT ENGINEERING DIVISION

MARTIN & PHILLIPS
PHILLIPS

DESIGN ASSOCIATES, INC.
Land Planning, Civil Engineering, Construction Administration, Architectural, Development Consulting, Zoning

DESIGNED :
DRAFTED :
CHECKED :

**PLAN VIEW,
WATER & SEWER PROFILES**

CONTRACT NO. 24-4249-D
600 SCALE MAP NO. 48

**PUBLIC WATER & SEWER MAIN
SCHUSTER CONCRETE**

Parcel No's 28, 29, 32 and 108
CONTRACT NO. 24-4249-D

HOWARD COUNTY, MARYLAND
ELECTION DISTRICT *06

SEPTEMBER 13, 2004
SHEET 2 OF 2

P/N 10142- sewerplan.s01