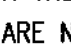


GENERAL NOTES

PART I

- APPROXIMATE LOCATION OF EXISTING MAINS ARE SHOWN. THE CONTRACTOR SHALL TAKE ALL NECESSARY PRECAUTIONS TO PROTECT EXISTING MAINS AND SERVICES AND MAINTAIN UNINTERRUPTED SERVICE. ANY DAMAGE INCURRED SHALL BE REPAIRED IMMEDIATELY TO THE SATISFACTION OF THE ENGINEER AT THE CONTRACTOR'S EXPENSE.
- ALL HORIZONTAL CONTROLS ARE BASED ON MARYLAND STATE COORDINATES. (NORTH AMERICAN DATUM OF 1983 (NAD 83))
- ALL VERTICAL CONTROLS ARE BASED ON U.S.G.S. DATA.
- ALL PIPE ELEVATIONS SHOWN ARE INVERT ELEVATIONS.
- CLEAR ALL UTILITIES BY A MINIMUM OF 12 INCHES. CLEAR ALL POLES BY 2'-0" MINIMUM OR TUNNEL AS REQUIRED UNLESS OTHERWISE NOTED. THE OWNER HAS CONTACTED THE UTILITY COMPANIES AND HAS MADE ARRANGEMENTS FOR BRACING OF POLES AS SHOWN ON DRAWINGS. IN THE EVENT THE CONTRACTOR'S WORK REQUIRES THE BRACING OF ADDITIONAL POLES, ANY COST INCURRED BY THE OWNER FOR BRACING OF ADDITIONAL POLES OR DAMAGES SHALL BE DEDUCTED FROM MONIES OWED THE CONTRACTOR. THE CONTRACTOR SHALL COORDINATE WITH THE UTILITY COMPANIES TO SCHEDULE THE BRACING OF THE POLES.
- FOR DETAILS NOT SHOWN ON THE DRAWINGS, AND FOR MATERIALS AND CONSTRUCTION METHODS USE HOWARD COUNTY DESIGN MANUAL, VOLUME IV, STANDARD SPECIFICATIONS AND DETAILS FOR CONSTRUCTION (LATEST EDITION). THE CONTRACTOR SHALL HAVE A COPY OF VOLUME IV ON THE JOB.
- WHERE TEST PITS HAVE BEEN MADE ON EXISTING UTILITIES, THEY ARE NOTED BY THE SYMBOL  AT THE LOCATION OF THE TEST PIT. A NOTES OR NOTES CONTAINING THE RESULTS OF THE TEST PIT OR PITS IS INCLUDED ON THE DRAWINGS. EXISTING UTILITIES IN THE VICINITY OF THE PROPOSED WORK FOR WHICH TEST PITS HAVE NOT BEEN DUG SHALL BE LOCATED BY THE CONTRACTOR TWO WEEKS IN ADVANCE OF CONSTRUCTION OPERATION AT HIS OWN EXPENSE.
- THE CONTRACTOR SHALL NOTIFY THE FOLLOWING UTILITY COMPANIES OR AGENCIES AT LEAST FIVE WORKING DAYS BEFORE STARTING WORK SHOWN THESE PLANS:
 AT & T 1-800-252-1133
 BGE (CONTRACTOR SERVICE) 410-850-4620
 BGE (UNDERGROUND DAMAGE CONTROL) 410-291-4607
 BUREAU OF UTILITIES 410-313-4900
 COLONIAL PIPELINE CO. 410-549-4120
 MISS UTILITY 1-800-257-7777
 STATE HIGHWAY ADMINISTRATION 410-531-5533
 VERIZON 1-800-743-0033/410-224-9210
- TREES AND SHRUBS ARE TO BE PROTECTED FROM DAMAGE TO THE MAXIMUM EXTENT. TREES AND SHRUBS LOCATED WITHIN THE CONSTRUCTION STRIP ARE NOT TO BE REMOVED OR DAMAGED BY THE CONTRACTOR.
- THE CONTRACTOR SHALL REMOVE TREES, STUMPS AND ROOTS ALONG THE LINE OF EXCAVATION. PAYMENT FOR SUCH REMOVAL SHALL BE INCLUDED IN THE UNIT PRICE BID FOR THE CONSTRUCTION OF THE MAIN.
- THE CONTRACTOR SHALL NOTIFY THE BUREAU OF HIGHWAYS, HOWARD COUNTY, AT (410) 313-7450 AT LEAST FIVE WORKING DAYS BEFORE ANY OPEN CUTTING OR BORING JACKING OF ANY COUNTY ROAD FOR LAYING BORING/JACKING OPERATION IN COUNTY ROADS FOR LAYING WATER/SEWER MAIN OR HOUSE CONNECTIONS. THE APPROVAL OF THESE DRAWINGS WILL CONSTITUTE COMPLIANCE WITH DPW REQUIREMENTS PER SECTION 18.114(o) OF THE HOWARD COUNTY CODE.
- THE CONTRACTOR SHALL EXERCISE EXTREME CAUTION WHEN WORKING NEAR AND/OR AROUND OVERHEAD UTILITY WIRES.

PART II - WATER

- ALL WATER MAINS TO BE D.I.P. CLASS 52 UNLESS OTHERWISE NOTED.
- TOPS OF ALL WATER MAINS TO HAVE A MINIMUM OF 3'-6" COVER UNLESS OTHERWISE NOTED.
- VALVES ADJACENT TO TEES SHALL BE STRAPPED TO TEES.
- ALL FITTINGS SHALL BE BUTTRESSED OR ANCHORED WITH CONCRETE IN ACCORDANCE WITH THE STANDARD DETAILS UNLESS OTHERWISE PROVIDED FOR ON THE DRAWINGS.
- FIRE HYDRANTS SHALL BE SET TO THE BURY LINE ELEVATIONS SHOWN ON THE DRAWINGS. ALL FIRE HYDRANTS SHALL BE RESTRAINED AND BUTTRESSED WITH CONCRETE IN ACCORDANCE WITH STANDARD DETAILS. THE SOIL AROUND THE FIRE HYDRANT SHALL BE COMPACTED IN ACCORDANCE WITH SECTION 1000 AND 1005 OF THE STANDARD SPECIFICATIONS.
- THE CONTRACTOR SHALL NOT OPERATE ANY WATER MAIN VALVES ON THE EXISTING WATER SYSTEM.
- ALL WATER HOUSE CONNECTIONS SHALL BE FOR INSIDE METER SETTING UNLESS OTHERWISE NOTED ON PLANS OR IN SPECIFICATIONS.

PART III - SEWER

- ALL SEWER MAINS SHALL BE D.I.P. OR P.V.C UNLESS OTHERWISE NOTED.
- ALL MANHOLES SHALL BE 4'-0" INSIDE DIAMETER UNLESS OTHERWISE NOTED.
- FORCE MAINS SHALL BE D.I.P. ONLY.
- MANHOLES SHOWN WITH 12" AND 16" WALLS ARE FOR BRICK MANHOLES ONLY.
- MANHOLES DESIGNATED W.T. IN PLAN AND PROFILE SHALL HAVE WATER-TIGHT FRAME AND COVER, STANDARD DETAIL G5.52. WHERE WATER-TIGHT MANHOLE FRAME AND COVERS ARE USED, SET TOP OF FRAME 1'-6" ABOVE FINISHED GRADE UNLESS OTHERWISE NOTED ON THE DRAWINGS.
- HOUSE(S) WITH THE SYMBOL "C.N.S." INDICATES THAT CELLAR CANNOT BE SERVED.

SEDIMENT CONTROL MEASURES WILL BE IMPLEMENTED IN ACCORDANCE WITH SECTION 219 OF THE SPECIFICATIONS AND WITH SITE DEVELOPMENT PLAN SDP-05-40

THIS DEVELOPMENT IS APPROVED FOR SOIL EROSION AND SEDIMENT CONTROL BY THE HOWARD COUNTY SOIL CONSERVATION DISTRICT.

REVIEWED FOR HOWARD COUNTY SOIL CONSERVATION DISTRICT AND MEETS TECHNICAL REQUIREMENTS.

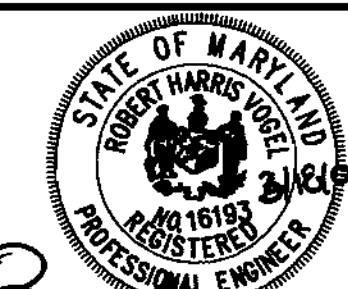
John R. Roberts
 SOIL CONSERVATION DISTRICT
 DATE: 3/28/05

Jim Mayhew
 SOIL CONSERVATION DISTRICT
 DATE: 3/28/05

DEPARTMENT OF PUBLIC WORKS
 HOWARD COUNTY, MARYLAND

DEPARTMENT OF PLANNING & ZONING
 HOWARD COUNTY, MARYLAND

ROBERT H. VOGEL ENGINEERING, INC.
 ENGINEERS • SURVEYORS • PLANNERS
 8407 MAIN STREET
 ELLICOTT CITY, MD 21043 TEL: 410.461.7866
 FAX: 410.461.8961



DES: DZ
 DRN: DZ
 CHK: RHV
 DATE: MARCH 2005

Robert H. Vogel
 CHIEF, BUREAU OF UTILITIES
 DATE: 3-31-05

Jim Mayhew
 CHIEF, DEVELOPMENT ENGINEERING DIVISION
 DATE: 4/1/05

FINAL WATER AND SEWER TITLE SHEET

DREYER'S GRAND ICE CREAM CONTRACT # 24-4246-D

SCALE AS SHOWN
 SHEET 1 OF 3

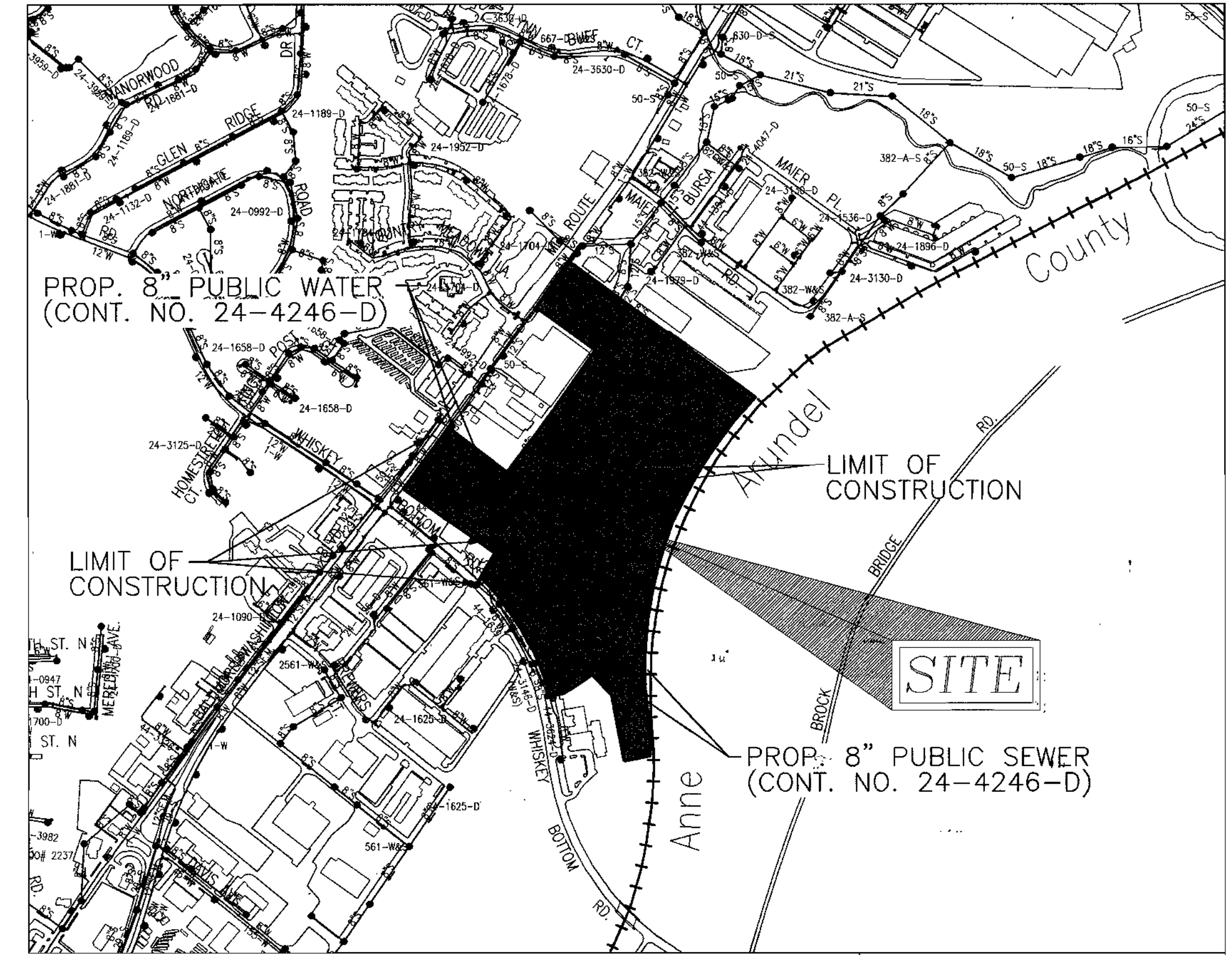
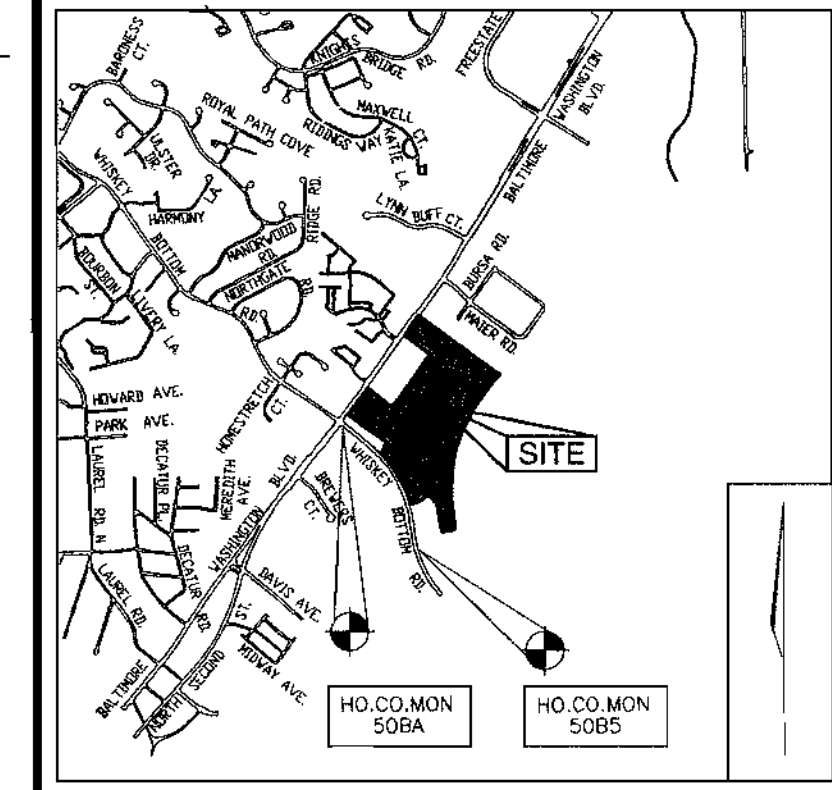
DREYER'S GRAND ICE CREAM PRELIMINARY PUBLIC WATER AND SEWER PLAN

HOWARD COUNTY, MARYLAND

CONTRACT NO. 24-4246-D

BENCHMARKS

HOWARD COUNTY BENCHMARK 508A	N 527561.678	E 1359772.604	ELEV. 249.737
HOWARD COUNTY BENCHMARK 5085	N 524999.375	E 1357925.748	ELEV. 178.195



LOCATION MAP
 SCALE: 1"=600'

WATER CODE:	C04
SEWER CODE:	7101800
TEST GRADIENT:	550

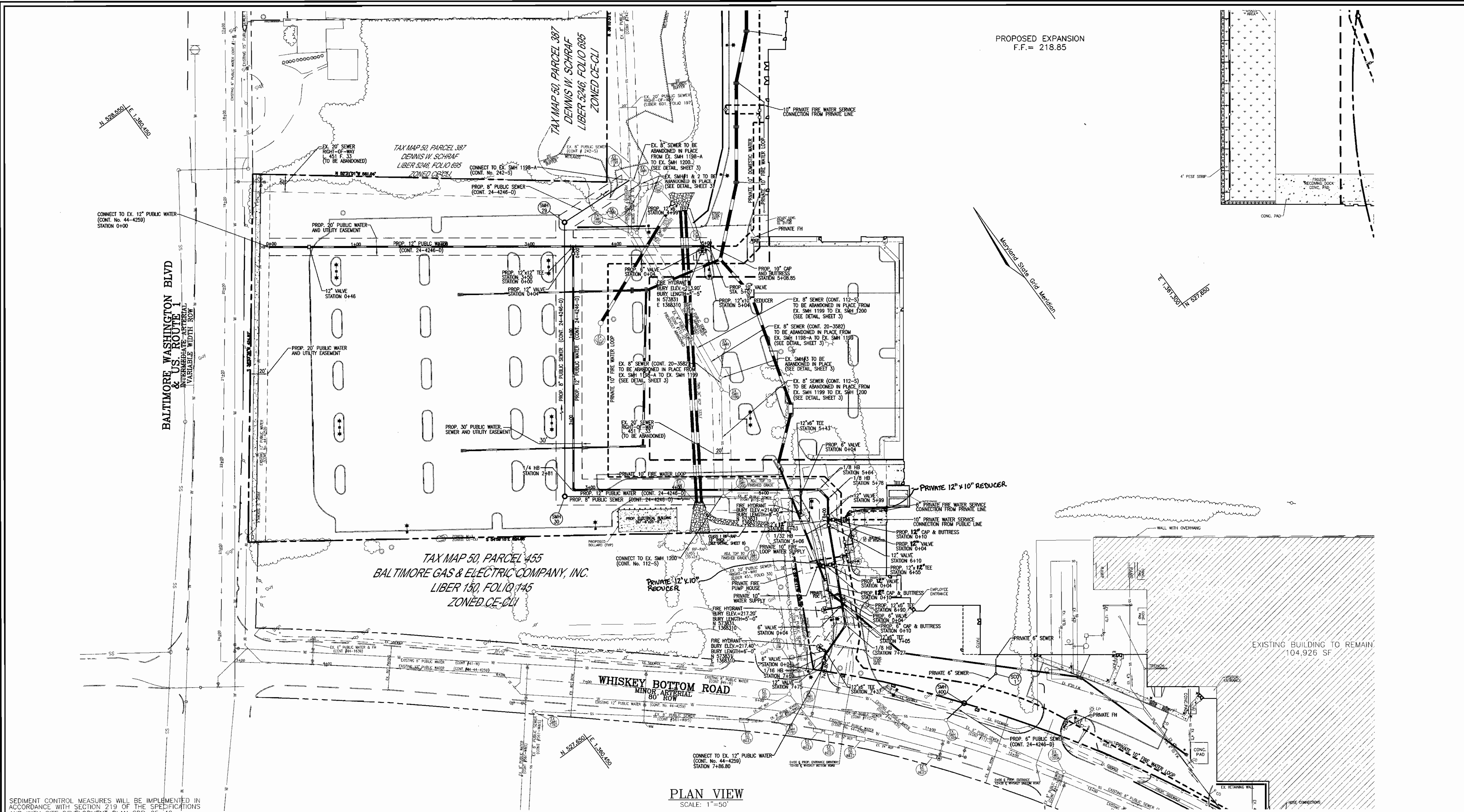
TYPE OF BUILDING:	COMMERCIAL
NO. OF UNITS/PARCELS:	ONE
NO. OF WATER HOUSE CONNECTIONS:	ONE
NO. OF SEWER HOUSE CONNECTIONS:	ONE
DRAINAGE AREA:	LITTLE PATUXENT RIVER
TREATMENT PLANT:	ALL SAINTS ROAD

QUANTITIES

NAME OF UTILITY CONTRACTOR :
 SURVEY AND DRAFTING DIVISION AS-BUILT DATE :

ITEMS	QUANTITIES ESTIMATED	AS-BUILT		
		QUANTITIES	TYPE	MANUFACTURER/SUPPLIER
WATER				
6" WATER	88 L.F.			
10" WATER	5 L.F.			
12" WATER	1320 L.F.			
6" VALVE	5 EA.			
10" VALVE	1 EA.			
12" VALVE	7 EA.			
12"x6" TEE	5 EA.			
12"x10" TEE	0 EA.			
12"x12" TEE	3 EA.			
12"x10" REDUCER	1 EA.			
12" 1/32 BEND	1 EA.			
12" 1/16 BEND	1 EA.			
12" 1/8 BEND	3 EA.			
12" 1/4 BEND	1 EA.			
6" CAP AND BUTTRESS	1 EA.			
10" CAP AND BUTTRESS	1 EA.			
FIRE HYDRANT	4 EA.			
12" CAP AND BUTTRESS	2 EA.			
SEWER				
8" PVC SEWER	591 L.F.			
MANHOLE	2 EA.			

K:\Projects\04 - 6\eng\dep\W.S.V\final\0307.dwg, 3/18/2005, 2:13:43 PM



PLAN VIEW
SCALE: 1"=50'

SEDIMENT CONTROL MEASURES WILL BE IMPLEMENTED IN ACCORDANCE WITH SECTION 219 OF THE SPECIFICATIONS AND WITH SITE DEVELOPMENT PLAN SDP-05-40

THIS DEVELOPMENT IS APPROVED FOR SOIL EROSION AND SEDIMENT CONTROL BY THE HOWARD COUNTY SOIL CONSERVATION DISTRICT.

John R. Rutherford 3/28/05
SOIL CONSERVATION DISTRICT

REVIEWED FOR HOWARD COUNTY SOIL CONSERVATION DISTRICT AND MEETS TECHNICAL REQUIREMENTS.

Jim Magler 3/29/05
SOIL CONSERVATION DISTRICT

DEPARTMENT OF PUBLIC WORKS
HOWARD COUNTY, MARYLAND

Robert M. ... 3-31-05
CHIEF, BUREAU OF UTILITIES

DEPARTMENT OF PLANNING & ZONING
HOWARD COUNTY, MARYLAND

...
CHIEF, DEVELOPMENT ENGINEERING DIVISION

ROBERT H. VOGEL ENGINEERING, INC.
ENGINEERS • SURVEYORS • PLANNERS
8407 MAIN STREET TEL: 410.461.7666
ELICOTT CITY, MD 21043 FAX: 410.461.8961



DES:	DZ				
DRN:	DZ				
CHK:	RHV				
DATE:	MARCH 2005	BY:	NO.	REVISION	DATE

FINAL WATER AND SEWER PLAN VIEW

600' SCALE MAP NO. 47 & 50 BLOCK NO. 5

DREYER'S GRAND ICE CREAM CONTRACT # 24-4246-D

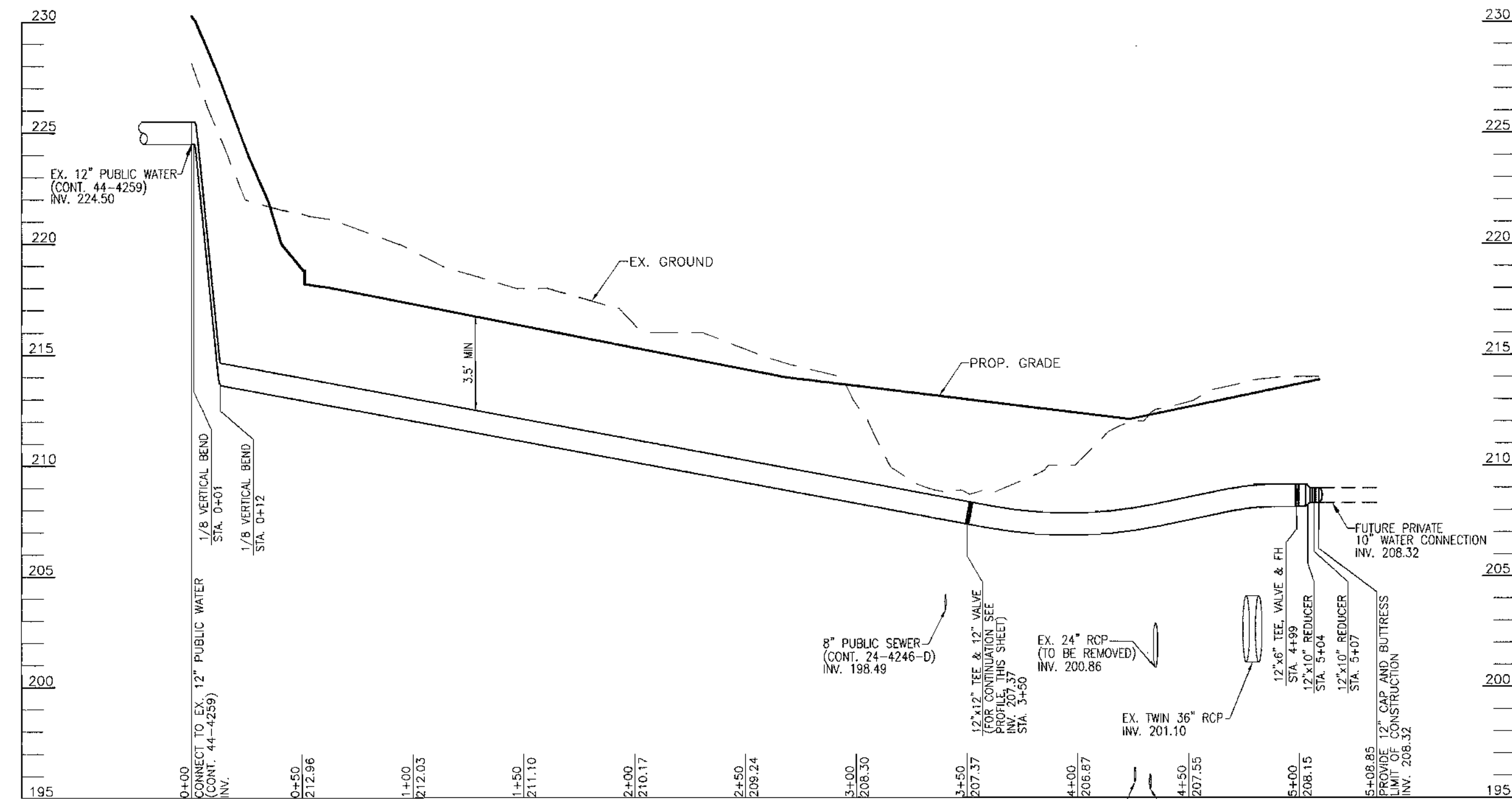
TAX MAP 47 & 50, BLOCK 5 PARCEL 509, 271, 341, 420, 302 & 293
5TH ELECTION DISTRICT HOWARD COUNTY, MARYLAND

OWNERS
ICE CREAM PARTNERS USA, L.L.C. 30003 BAINBRIDGE ROAD SOLON, OHIO 44139
NESTLE ICE CREAM, INC. 5929 COLLEGE AVE. OAKLAND, CA 94618
DREYER'S GRAND ICE CREAM, INC. 1 PINE LANE LAUREL, MD 20723

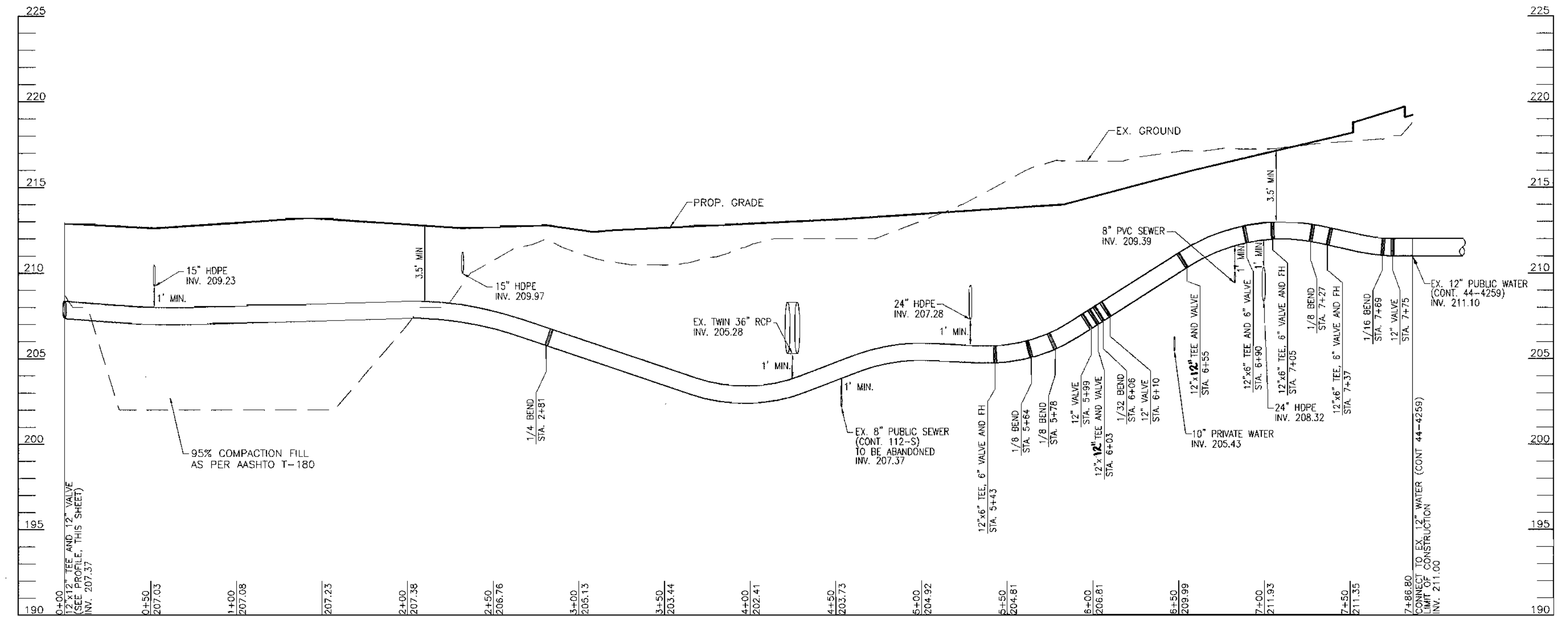
DEVELOPER
NESTLE ICE CREAM, INC. 5929 COLLEGE AVE. OAKLAND, CA 94618

SCALE AS SHOWN
SHEET 2 OF 3

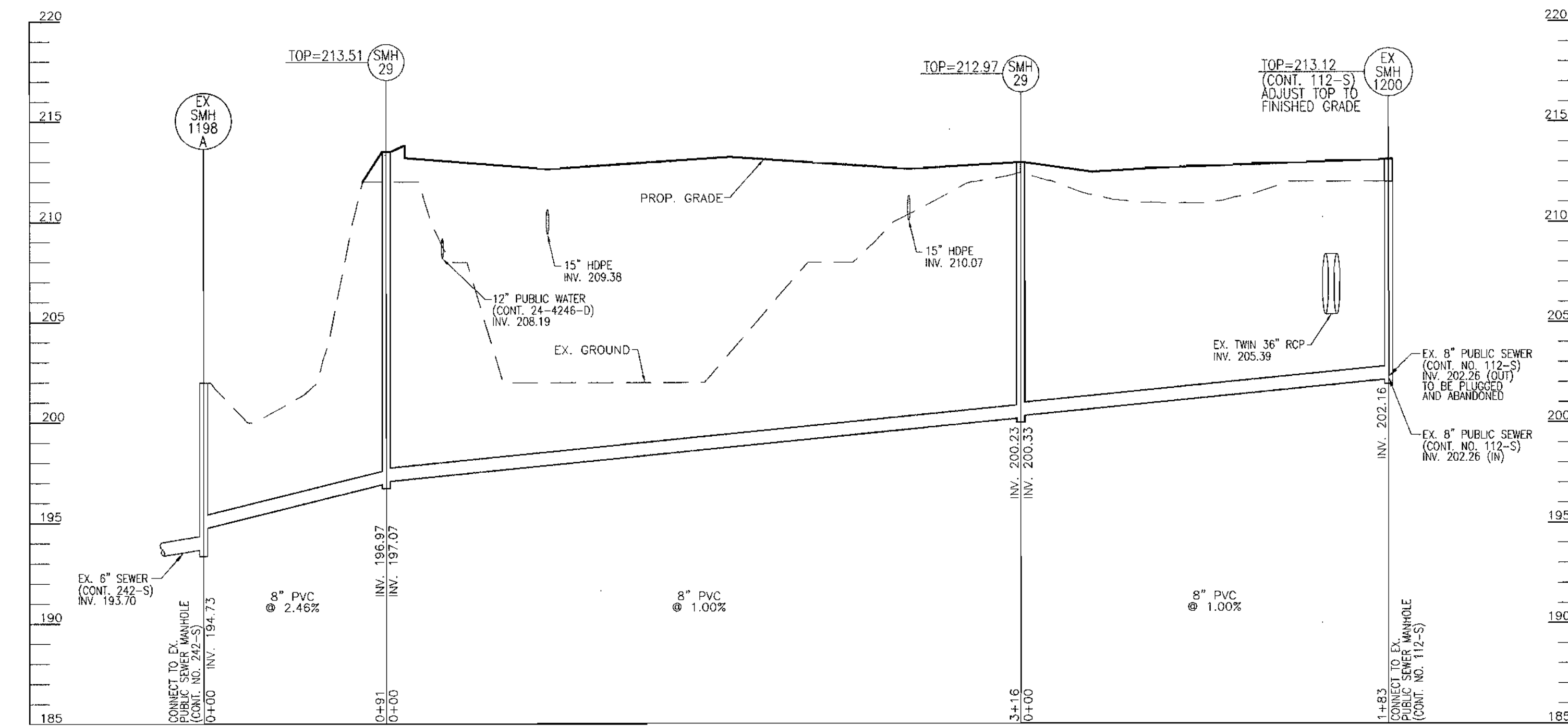
K:\Projects\14 - 18' Prop\dwg\14-18' Prop\14-18' Prop\14-18' Prop.dwg, 5/7/05, 2:42:57 PM



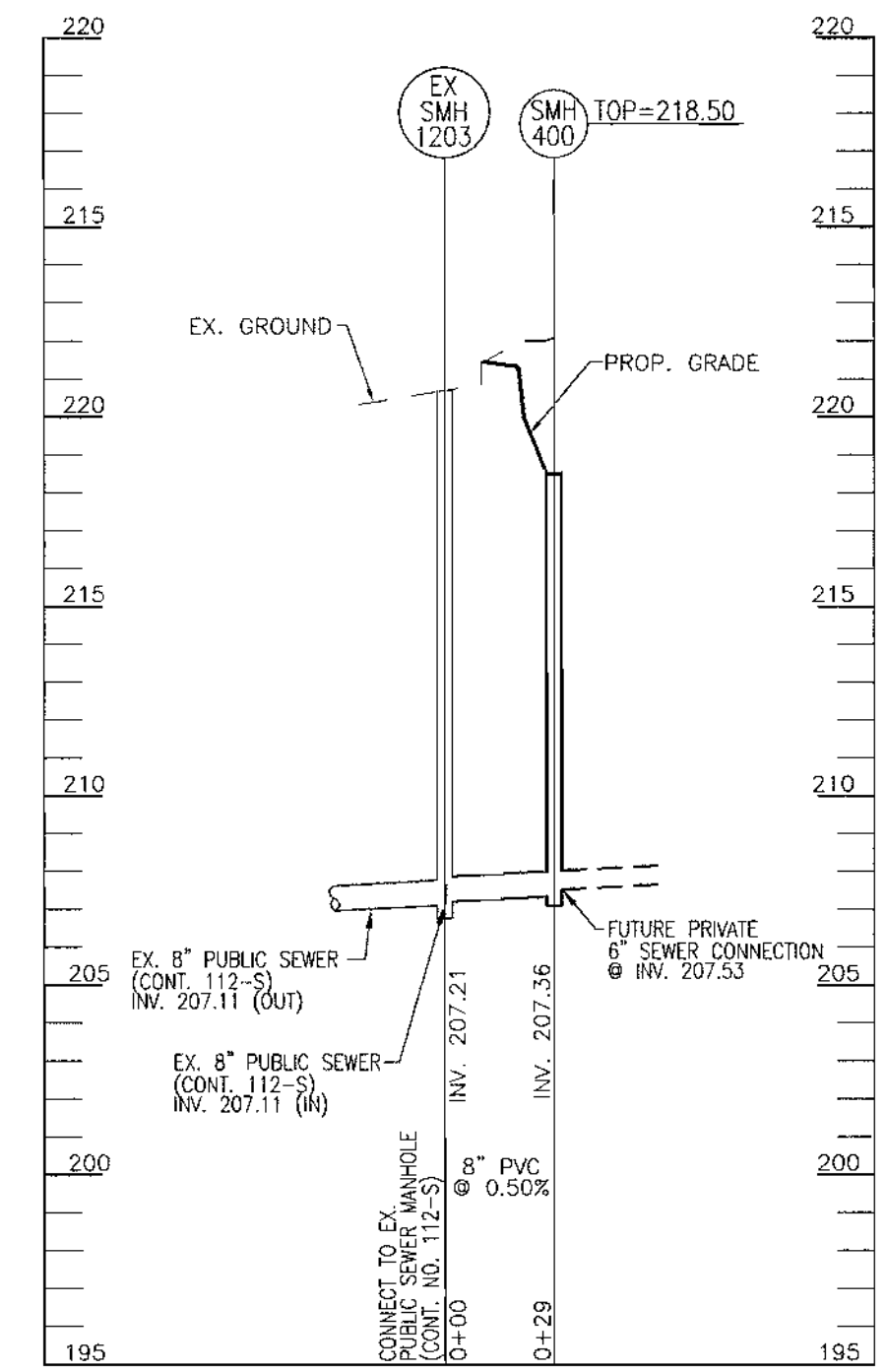
12" PUBLIC WATER PROFILE
SCALE: HORIZONTAL - 1"=50'
VERTICAL - 1"=5'



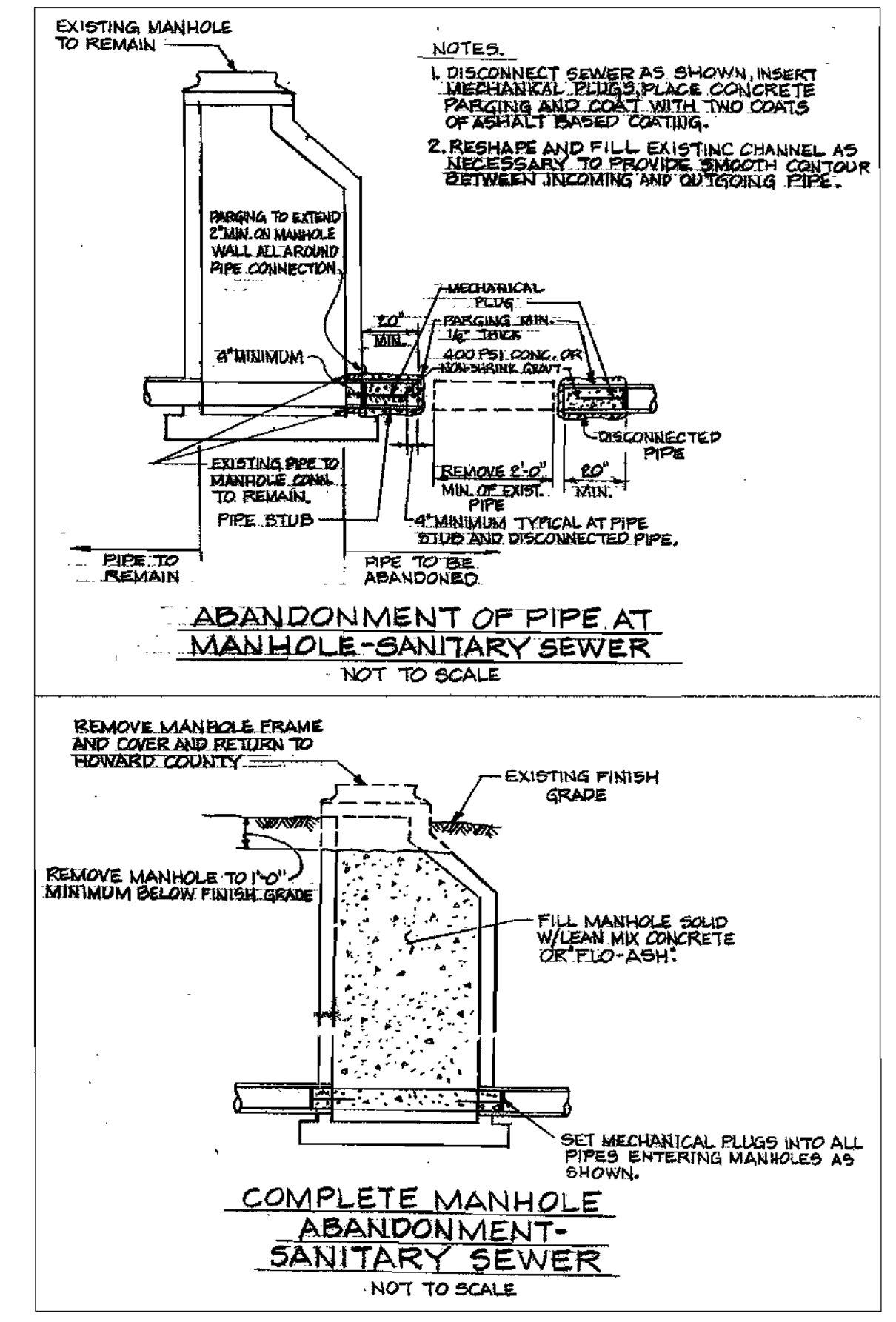
12" PUBLIC WATER PROFILE
SCALE: HORIZONTAL - 1"=50'
VERTICAL - 1"=5'



PUBLIC SEWER PROFILE
SCALE: HORIZONTAL - 1"=50'
VERTICAL - 1"=5'



PUBLIC SEWER PROFILE
SCALE: HORIZONTAL - 1"=50'
VERTICAL - 1"=5'



ERIMENT CONTROL MEASURES WILL BE IMPLEMENTED IN ACCORDANCE WITH SECTION 219 OF THE SPECIFICATIONS AND WITH SITE DEVELOPMENT PLAN SDP-05-40

THIS DEVELOPMENT IS APPROVED FOR SOIL EROSION AND SEDIMENT CONTROL BY THE HOWARD COUNTY SOIL CONSERVATION DISTRICT

REVIEWER FOR HOWARD COUNTY SOIL CONSERVATION DISTRICT AND MEETS TECHNICAL REQUIREMENTS.

SEWER MANHOLE LOCATION CHART

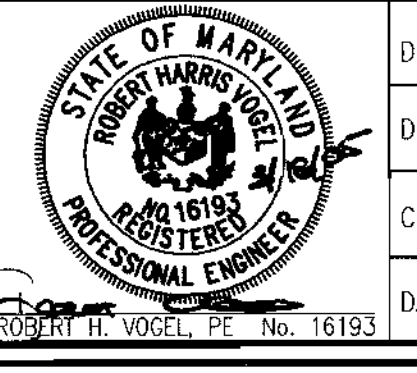
NO.	TYPE	LOCATION	TOP ELEV.
SMH-29	4' PRECAST SEWER MANHOLE	N 528146 E 1360780	200.10
SMH-30	4' PRECAST SEWER MANHOLE	N 527890 E 1360594	209.00
SMH-400	4' PRECAST SEWER MANHOLE	N 527426 E 1360825	209.00

DEPARTMENT OF PUBLIC WORKS
HOWARD COUNTY, MARYLAND

DEPARTMENT OF PLANNING & ZONING
HOWARD COUNTY, MARYLAND

Robert H. Vogel
ROBERT H. VOGEL
ENGINEERS • SURVEYORS • PLANNERS
8407 MAIN STREET
ELICOTT CITY, MD 21043
TEL: 410.461.7666
FAX: 410.461.8961

ROBERT H. VOGEL ENGINEERING, INC.
ENGINEERS • SURVEYORS • PLANNERS
8407 MAIN STREET
ELICOTT CITY, MD 21043
TEL: 410.461.7666
FAX: 410.461.8961



DES: DZ
DRN: DZ
CHK: RHV
DATE: MARCH 2005

BY	NO.	REVISION	DATE

FINAL WATER AND SEWER PROFILES

60' SCALE MAP NO. 47 & 50
BLOCK NO. 5

OWNERS
ICE CREAM PARTNERS USA, L.L.C.
30003 BAINBRIDGE ROAD
SOLON, OHIO 44139

DEVELOPER
NESTLE ICE CREAM, INC.
5929 COLLEGE AVE.
OAKLAND, CA 94618

DREYER'S GRAND ICE CREAM CONTRACT # 24-4246-D

TAX MAP 47 & 50, BLOCK 5
6TH ELECTION DISTRICT

PARCEL 509, 271, 341, 420, 302 & 293
HOWARD COUNTY, MARYLAND

SCALE AS SHOWN
SHEET 3 OF 3

R:\Projects\04 - 10 - 2004\04-10-2004.dwg, 5/19/2005 2: 5:53 PM

GENERAL NOTES

PART I

- APPROXIMATE LOCATION OF EXISTING MAINS ARE SHOWN. THE CONTRACTOR SHALL TAKE ALL NECESSARY PRECAUTIONS TO PROTECT EXISTING MAINS AND SERVICES AND MAINTAIN UNINTERRUPTED SERVICE. ANY DAMAGE INCURRED SHALL BE REPAIRED IMMEDIATELY TO THE SATISFACTION OF THE ENGINEER AT THE CONTRACTOR'S EXPENSE.
- ALL HORIZONTAL CONTROLS ARE BASED ON MARYLAND STATE COORDINATES. (NORTH AMERICAN DATUM OF 1983 (NAD 83))
- ALL VERTICAL CONTROLS ARE BASED ON U.S.G.S. DATA.
- ALL PIPE ELEVATIONS SHOWN ARE INVERT ELEVATIONS.
- CLEAR ALL UTILITIES BY A MINIMUM OF 12 INCHES. CLEAR ALL POLES BY 2'-0" MINIMUM OR TUNNEL AS REQUIRED UNLESS OTHERWISE NOTED. THE OWNER HAS CONTACTED THE UTILITY COMPANIES AND HAS MADE ARRANGEMENTS FOR BRACING OF POLES AS SHOWN ON DRAWINGS IN THE EVENT THE CONTRACTOR'S WORK REQUIRES THE BRACING OF ADDITIONAL POLES. ANY COST INCURRED BY THE OWNER FOR BRACING OF ADDITIONAL POLES OR DAMAGES SHALL BE DEDUCTED FROM MONIES OWED THE CONTRACTOR. THE CONTRACTOR SHALL COORDINATE WITH THE UTILITY COMPANIES TO SCHEDULE THE BRACING OF THE POLES.
- FOR DETAILS NOT SHOWN ON THE DRAWINGS, AND FOR MATERIALS AND CONSTRUCTION METHODS USE HOWARD COUNTY DESIGN MANUAL, VOLUME IV, STANDARD SPECIFICATIONS AND DETAILS FOR CONSTRUCTION (LATEST EDITION). THE CONTRACTOR SHALL HAVE A COPY OF VOLUME IV ON THE JOB.
- WHERE TEST PITS HAVE BEEN MADE ON EXISTING UTILITIES, THEY ARE NOTED BY THE SYMBOL AT THE LOCATION OF THE TEST PIT. A NOTES OR NOTES CONTAINING THE RESULTS OF THE TEST PIT OR PITS IS INCLUDED ON THE DRAWINGS. EXISTING UTILITIES IN THE VICINITY OF THE PROPOSED WORK FOR WHICH TEST PITS HAVE NOT BEEN DUG SHALL BE LOCATED BY THE CONTRACTOR TWO WEEKS IN ADVANCE OF CONSTRUCTION OPERATION AT HIS OWN EXPENSE.
- THE CONTRACTOR SHALL NOTIFY THE FOLLOWING UTILITY COMPANIES OR AGENCIES AT LEAST FIVE WORKING DAYS BEFORE STARTING WORK SHOWN THESE PLANS:
 AT & T 1-800-252-1133
 BGE (CONTRACTOR SERVICE) 410-850-4620
 BGE (UNDERGROUND DAMAGE CONTROL) 410-291-4607
 BUREAU OF UTILITIES 410-313-4900
 COLONIAL PIPELINE CO. 410-549-4120
 MISS UTILITY 1-800-257-7777
 STATE HIGHWAY ADMINISTRATION 410-531-5533
 VERIZON 1-800-743-0033/410-224-9210
- TREES AND SHRUBS ARE TO BE PROTECTED FROM DAMAGE TO THE MAXIMUM EXTENT. TREES AND SHRUBS LOCATED WITHIN THE CONSTRUCTION STRIP ARE NOT TO BE REMOVED OR DAMAGED BY THE CONTRACTOR
- THE CONTRACTOR SHALL REMOVE TREES, STUMPS AND ROOTS ALONG THE LINE OF EXCAVATION. PAYMENT FOR SUCH REMOVAL SHALL BE INCLUDED IN THE UNIT PRICE BID FOR THE CONSTRUCTION OF THE MAIN.
- THE CONTRACTOR SHALL NOTIFY THE BUREAU OF HIGHWAYS, HOWARD COUNTY, AT (410) 313-7450 AT LEAST FIVE WORKING DAYS BEFORE ANY OPEN CUTTING OR BORING JACKING OF ANY COUNTY ROAD FOR LAYING BORING/JACKING OPERATION IN COUNTY ROADS FOR LAYING WATER/SEWER MAIN OR HOUSE CONNECTIONS. THE APPROVAL OF THESE DRAWINGS WILL CONSTITUTE COMPLIANCE WITH DPW REQUIREMENTS PER SECTION 18.114(g) OF THE HOWARD COUNTY CODE.
- THE CONTRACTOR SHALL EXERCISE EXTREME CAUTION WHEN WORKING NEAR AND/OR AROUND OVERHEAD UTILITY WIRES.

PART II - WATER

- ALL WATER MAINS TO BE D.I.P. CLASS 52 UNLESS OTHERWISE NOTED.
- TOPS OF ALL WATER MAINS TO HAVE A MINIMUM OF 3'-6" COVER UNLESS OTHERWISE NOTED.
- VALVES ADJACENT TO TEES SHALL BE STRAPPED TO TEES.
- ALL FITTINGS SHALL BE BUTTRESSED OR ANCHORED WITH CONCRETE IN ACCORDANCE WITH THE STANDARD DETAILS UNLESS OTHERWISE PROVIDED FOR ON THE DRAWINGS.
- FIRE HYDRANTS SHALL BE SET TO THE BURY LINE ELEVATIONS SHOWN ON THE DRAWINGS. ALL FIRE HYDRANTS SHALL BE RESTRAINED AND BUTTRESSED WITH CONCRETE IN ACCORDANCE WITH STANDARD DETAILS. THE SOIL AROUND THE FIRE HYDRANT SHALL BE COMPACTED IN ACCORDANCE WITH SECTION 1000 AND 1005 OF THE STANDARD SPECIFICATIONS.
- THE CONTRACTOR SHALL NOT OPERATE ANY WATER MAIN VALVES ON THE EXISTING WATER SYSTEM.
- ALL WATER HOUSE CONNECTIONS SHALL BE FOR INSIDE METER SETTING UNLESS OTHERWISE NOTED ON PLANS OR IN SPECIFICATIONS.

PART III - SEWER

- ALL SEWER MAINS SHALL BE D.I.P. OR P.V.C UNLESS OTHERWISE NOTED.
- ALL MANHOLES SHALL BE 4'-0" INSIDE DIAMETER UNLESS OTHERWISE NOTED.
- FORCE MAINS SHALL BE D.I.P. ONLY.
- MANHOLES SHOWN WITH 12" AND 16" WALLS ARE FOR BRICK MANHOLES ONLY.
- MANHOLES DESIGNATED W.T. IN PLAN AND PROFILE SHALL HAVE WATERTIGHT FRAME AND COVER, STANDARD DETAIL GS.52. WHERE WATERTIGHT MANHOLE FRAME AND COVERS ARE USED, SET TOP OF FRAME 1'-6" ABOVE FINISHED GRADE UNLESS OTHERWISE NOTED ON THE DRAWINGS.
- HOUSE(S) WITH THE SYMBOL "C.N.S." INDICATES THAT CELLAR CANNOT BE SERVED.

SEDIMENT CONTROL MEASURES WILL BE IMPLEMENTED IN ACCORDANCE WITH SECTION 219 OF THE SPECIFICATIONS AND WITH SITE DEVELOPMENT PLAN SDP-05-40

THIS DEVELOPMENT IS APPROVED FOR SOIL EROSION AND SEDIMENT CONTROL BY THE HOWARD COUNTY SOIL CONSERVATION DISTRICT.

REVIEWED FOR HOWARD COUNTY SOIL CONSERVATION DISTRICT AND MEETS TECHNICAL REQUIREMENTS.

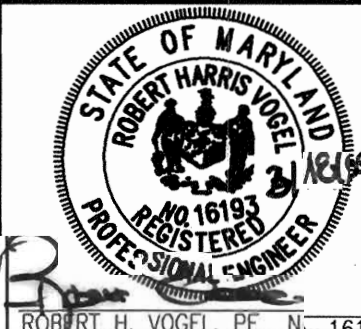
John K. Blanton
 SOIL CONSERVATION DISTRICT
 DATE: 3/28/05

Jim Mayhew
 SOIL CONSERVATION DISTRICT
 DATE: 3/28/05

DEPARTMENT OF PUBLIC WORKS
 HOWARD COUNTY, MARYLAND

DEPARTMENT OF PLANNING & ZONING
 HOWARD COUNTY, MARYLAND

ROBERT H. VOGEL ENGINEERING, INC.
 ENGINEERS • SURVEYORS • PLANNERS
 8407 MAIN STREET TEL: 410.461.7666
 ELLICOTT CITY, MD 21043 FAX: 410.461.8961



DES:	DZ				
DRN:	DZ				
CHK:	RHV				
DATE:	MARCH 2005	DZ	1	REVISE TITLE FROM "PRELIMINARY" TO "FINAL"	04-28-05
		BY	NO.	REVISION	DATE

FINAL WATER AND SEWER
 TITLE SHEET

DREYER'S GRAND ICE CREAM
 CONTRACT # 24-4246-D

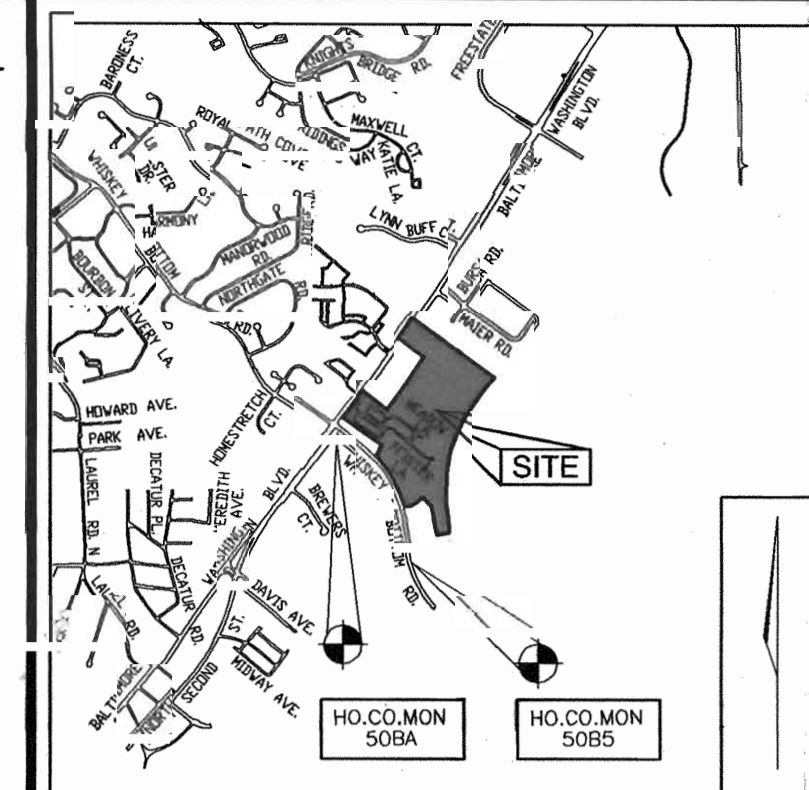
SCALE AS SHOWN
 SHEET 1 OF 3

TAX MAP 47 & 50, BLOCK 5 PARCEL 509, 271, 341, 420, 302 & 293
 6TH ELECTION DISTRICT HOWARD COUNTY, MARYLAND

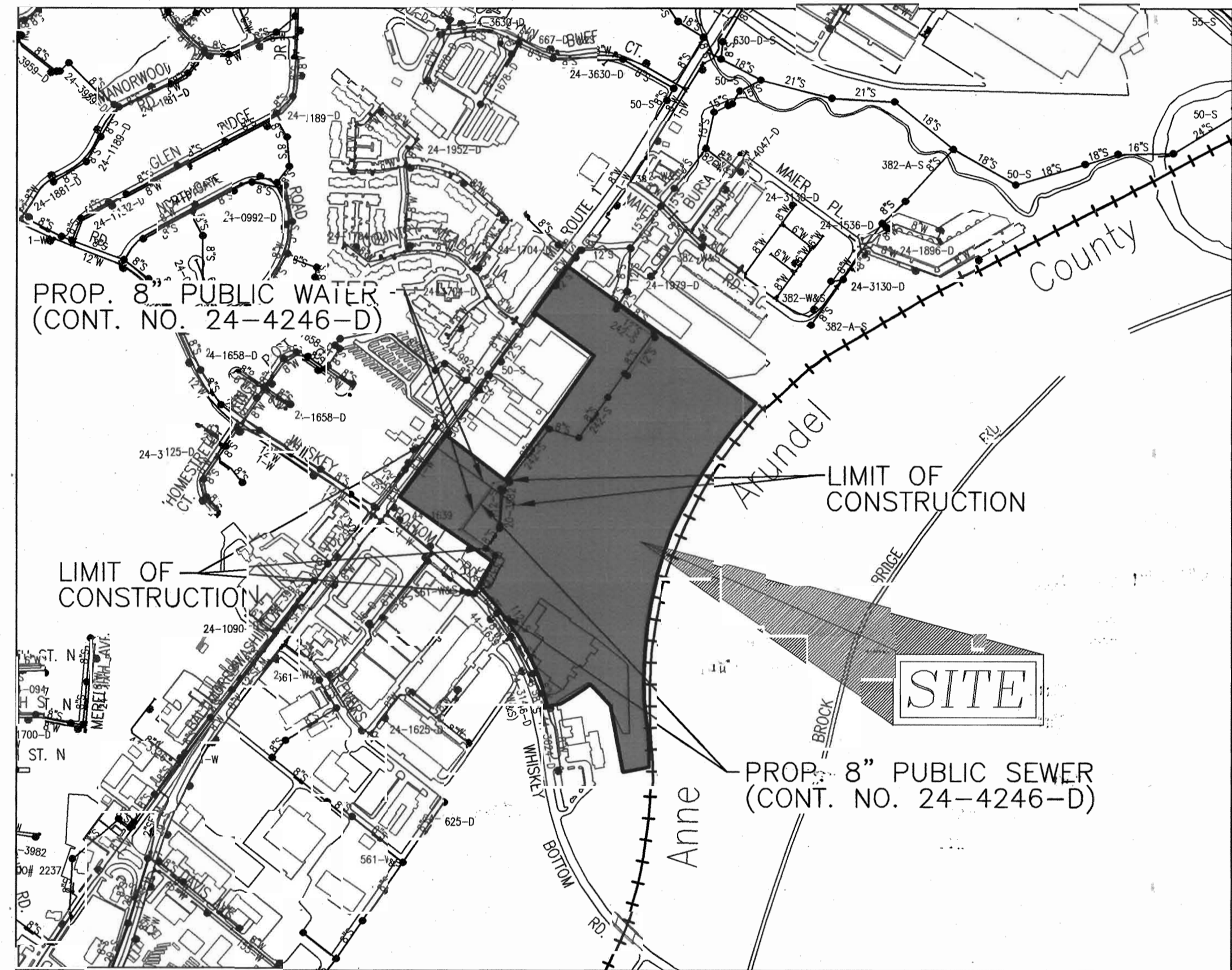
DREYER'S GRAND ICE CREAM FINAL PUBLIC WATER AND SEWER PLAN HOWARD COUNTY, MARYLAND CONTRACT NO. 24-4246-D

BENCHMARKS

HOWARD COUNTY BENCHMARK 508A N 527561.678 E 1359772.604	ELEV. 249.737
HOWARD COUNTY BENCHMARK 5085 N 524999.375 E 1357925.748	ELEV. 178.195



VICINITY MAP
 SCALE: 1"=2000'



LOCATION MAP
 SCALE: 1"=600'

WATER CODE:	C04
SEWER CODE:	7101800
TEST GRADIENT:	550

TYPE OF BUILDING:	COMMERCIAL
NO. OF UNITS/PARCELS:	ONE
NO. OF WATER HOUSE CONNECTIONS:	ONE
NO. OF SEWER HOUSE CONNECTIONS:	ONE
DRAINAGE AREA:	LITTLE PATUXENT RIVER
TREATMENT PLANT:	ALL SAINTS ROAD

QUANTITIES				
NAME OF UTILITY CONTRACTOR :				
SURVEY AND DRAFTING DIVISION AS-BUILT DATE :				
ITEMS	QUANTITIES ESTIMATED	AS-BUILT		
		QUANTITIES	TYPE	MANUFACTURER/SUPPLIER
WATER				
6" WATER	68 LF.			
10" WATER	5 LF.			
12" WATER	1320 LF.			
6" VALVE	5 EA.			
10" VALVE	1 EA.			
12" VALVE	7 EA.			
12"x6" TEE	5 EA.			
12"x10" TEE	0 EA.			
12"x12" TEE	3 EA.			
12"x10" REDUCER	1 EA.			
12" 1/32 BEND	1 EA.			
12" 1/16 BEND	1 EA.			
12" 1/8 BEND	3 EA.			
12" 1/4 BEND	1 EA.			
6" CAP AND BUTTRESS	1 EA.			
10" CAP AND BUTTRESS	1 EA.			
FIRE HYDRANT	4 EA.			
12" CAP AND BUTTRESS	2 EA.			
SEWER				
8" PVC SEWER	581 LF.			
MANHOLE	2 EA.			

K:\Projects\04-18\prop\dwg\12\Final\2005.dwg, 3/18/2005 2:15:35 PM