

GENERAL NOTES

- PART I**
- APPROXIMATE LOCATIONS OF EXISTING MAINS ARE SHOWN. THE CONTRACTOR SHALL TAKE ALL NECESSARY PRECAUTIONS TO PROTECT EXISTING MAINS AND SERVICES AND MAINTAIN UNINTERRUPTED SERVICE. ANY DAMAGE INCURRED SHALL BE REPAIRED IMMEDIATELY TO THE SATISFACTION OF THE ENGINEER AT THE CONTRACTOR'S EXPENSE.
 - ALL HORIZONTAL CONTROLS ARE BASED ON MARYLAND STATE COORDINATES, NAD 83/91.
 - ALL VERTICAL CONTROLS ARE BASED ON NAVD 88.
 - ALL PIPE ELEVATIONS SHOWN ARE INVERT ELEVATIONS UNLESS OTHERWISE NOTED ON THE PLANS.
 - CLEAR ALL UTILITIES BY A MINIMUM OF 12 INCHES. CLEAR ALL POLES BY 5'-0" MINIMUM OR TUNNEL AS REQUIRED UNLESS OTHERWISE NOTED. THE OWNER HAS CONTACTED THE UTILITY COMPANIES AND HAS MADE ARRANGEMENTS FOR BRACING OF POLES AS SHOWN ON THE DRAWINGS. IN THE EVENT THE CONTRACTOR'S WORK REQUIRES THE BRACING OF ADDITIONAL POLES, ANY COST INCURRED BY THE OWNER FOR THE BRACING OF ADDITIONAL POLES OR DAMAGES SHALL BE DEDUCTED FROM MONIES OWED THE CONTRACTOR. THE CONTRACTOR SHALL COORDINATE WITH THE UTILITY COMPANIES TO SCHEDULE THE BRACING OF THE POLES.
 - FOR DETAILS NOT SHOWN ON THE DRAWING, AND FOR MATERIALS AND CONSTRUCTION METHODS, USE HOWARD COUNTY DESIGN MANUAL, VOLUME IV, STANDARD SPECIFICATIONS AND DETAILS FOR CONSTRUCTION (LATEST EDITION). THE CONTRACTOR SHALL HAVE A COPY OF VOLUME IV ON THE JOB.
 - WHERE TEST PITS HAVE BEEN MADE ON EXISTING UTILITIES, THEY ARE NOTED BY THE SYMBOL AT THE LOCATIONS OF THE TEST PITS. A NOTE OR NOTES CONTAINING THE RESULTS OF THE TEST PITS IS INCLUDED ON THE DRAWINGS. EXISTING UTILITIES IN THE VICINITY OF THE PROPOSED WORK FOR WHICH TEST PITS HAVE NOT BEEN DUG SHALL BE LOCATED BY THE CONTRACTOR TWO WEEKS IN ADVANCE OF CONSTRUCTION OPERATIONS AT HIS OWN EXPENSE.
 - THE CONTRACTOR SHALL NOTIFY THE FOLLOWING UTILITY COMPANIES OR AGENCIES AT LEAST FIVE WORKING DAYS BEFORE STARTING WORK SHOWN ON THESE PLANS:

AT&T	1-800-252-1133
BGE (CONTRACTOR SERVICES)	410-850-4620
BGE (UNDERGROUND DAMAGE CONTROL)	410-787-9068
BUREAU OF UTILITIES	410-313-4900
COLONIAL PIPELINE CO	410-795-1390
MISS UTILITY	1-800-257-7777
STATE HIGHWAY ADMINISTRATION	410-531-5533
VERIZON	1-800-743-003/410-224-9210
 - TREES AND SHRUBS ARE TO BE PROTECTED FROM DAMAGE TO THE MAXIMUM EXTENT. TREES AND SHRUBS LOCATED WITHIN THE CONSTRUCTION STRIP ARE NOT TO BE REMOVED OR DAMAGED BY THE CONTRACTOR.
 - THE CONTRACTOR SHALL REMOVE TREES, STUMPS AND ROOTS ALONG THE LINE OF EXCAVATION. PAYMENT FOR SUCH REMOVAL SHALL BE INCLUDED IN THE UNIT PRICE BID FOR CONSTRUCTION OF THE MAIN.
 - THE CONTRACTOR SHALL NOTIFY THE BUREAU OF HIGHWAYS, HOWARD COUNTY, AT (410) 313-7450 AT LEAST FIVE WORKING DAYS BEFORE OPEN CUTTING OR BORING/JACKING OF ANY COUNTY ROAD FOR LAYING WATER/SEWER MAINS OR HOUSE CONNECTIONS. THE APPROVAL OF THESE DRAWINGS WILL CONSTITUTE COMPLIANCE WITH DPW REQUIREMENTS PER SECTION 18.114(g) OF THE HOWARD COUNTY CODE.

PART II WATER

- ALL WATER MAINS SHALL BE D.I.P. CLASS 52 UNLESS OTHERWISE NOTED.
- TOPS OF ALL WATER MAINS SHALL HAVE A MINIMUM OF 3'-6" OF COVER UNLESS OTHERWISE NOTED.
- VALVES ADJACENT TO TEES SHALL BE STRAPPED TO TEES.
- ALL FITTINGS SHALL BE BUTTRESSED OR ANCHORED WITH CONCRETE IN ACCORDANCE WITH STANDARD DETAILS UNLESS OTHERWISE PROVIDED FOR THE DRAWINGS.
- FIRE HYDRANTS SHALL BE SET TO THE BURY LINE ELEVATIONS SHOWN ON THE DRAWINGS. ALL FIRE HYDRANTS SHALL BE INSTALLED IN ACCORDANCE WITH STANDARD DETAILS. THE SOIL AROUND THE FIRE HYDRANT SHALL BE COMPACTED IN ACCORDANCE WITH SECTION 1000 AND SECTION 1005 OF THE STANDARD SPECIFICATIONS.
- THE CONTRACTOR SHALL NOT OPERATE ANY WATER MAIN VALVES ON THE EXISTING WATER SYSTEM.
- DUCTILE IRON PIPE WITH RESTRAINT JOINTS MUST BE USED FOR ALL WATER MAINS IN FILL AREAS.

PART III SEWER

- ALL SEWER MAINS SHALL BE D.I.P. OR P.V.C. UNLESS OTHERWISE NOTED.
- ALL MANHOLES SHALL BE 4'-0" INSIDE DIAMETER UNLESS OTHERWISE NOTED.
- FORCE MAINS SHALL BE D.I.P. ONLY.
- MANHOLES SHOWN WITH 12" AND 18" WALL ARE FOR BRICK MANHOLES ONLY.
- MANHOLES DESIGNATED W.T. IN PLAN AND PROFILE SHALL HAVE WATERTIGHT FRAME AND COVER, STANDARD DETAIL G5.52. WHERE WATERTIGHT MANHOLE FRAMES AND COVERS ARE USED, SET TOP OF FRAME 1'-6" ABOVE FINISHED GRADE UNLESS OTHERWISE NOTED ON THE DRAWINGS.
- HOUSE(S) WITH SYMBOL "C.N.S." INDICATES THAT THE CELLAR CANNOT BE SERVED.
- DUCTILE IRON PIPE WITH RESTRAINT JOINTS MUST BE USED FOR ALL SEWER MAINS IN FILL AREAS.

TYPE OF BUILDING:	RESIDENTIAL
NO. OF LOTS/PARCELS:	30
NO. OF WATER HOUSE CONNECTIONS:	30 (-5 EXISTING)
NO. OF SEWER HOUSE CONNECTIONS:	30 (-5 EXISTING)
DRAINAGE AREA:	PATAPSCO
TREATMENT PLANT:	NEW CUT ROAD WASTEWATER PUMPING STATION

SEDIMENT CONTROL MEASURES WILL BE IMPLEMENTED IN ACCORDANCE WITH SECTION 219 OF THE SPECIFICATIONS AND WITH FINAL PLAN F-05-019.

THIS DEVELOPMENT IS APPROVED FOR SOIL EROSION AND SEDIMENT CONTROL BY THE HOWARD COUNTY SOIL CONSERVATION DISTRICT.

REVIEWED FOR HOWARD COUNTY SOIL CONSERVATION DISTRICT AND MEETS TECHNICAL REQUIREMENTS.

John P. Robertson 2/10/05
SOIL CONSERVATION DISTRICT DATE

Jim Meyer 2/10/05
U.S. SOIL CONSERVATION DISTRICT DATE

OWNER
TAYLOR FAMILY LIMITED PARTNERSHIP B
4100 COLLEGE AVE.
ELLICOTT CITY, MARYLAND
21043-5506

DEVELOPER
NEW CUT ROAD DEVELOPMENT 2, INC.
C/O LAND DESIGN & DEVELOPMENT, INC.
8000 MAIN STREET
ELLICOTT CITY, MARYLAND 21043
ATTN: MR. DONALD R. REUWER
PHONE: (410) 480-9105

DEPARTMENT OF PUBLIC WORKS
HOWARD COUNTY, MARYLAND

DEPARTMENT OF PLANNING & ZONING
HOWARD COUNTY, MARYLAND

ROBERT H. VOGEL ENGINEERING, INC.
ENGINEERS • SURVEYORS • PLANNERS
8407 MAIN STREET TEL: 410.461.7666
ELLICOTT CITY, MD 21043 FAX: 410.461.8961

DES: RJ			
DRN: RJ			
CHK: RHV			
DATE: FEB. 2005	BY NO.	REVISION	DATE

PLAN & PROFILES

600' SCALE MAP NO. 25
BLOCK NO. 20
600' SCALE MAP NO. 31
BLOCK NO. 2



WORTHINGTON FIELDS
PHASE 5 LOTS 60-89
CONTRACT NO. 14-4245-D

TAX MAP 25 BLOCK 20
TAX MAP 31 BLOCK 2
2ND ELECTION DISTRICT

PARCEL '98'
HOWARD COUNTY, MARYLAND

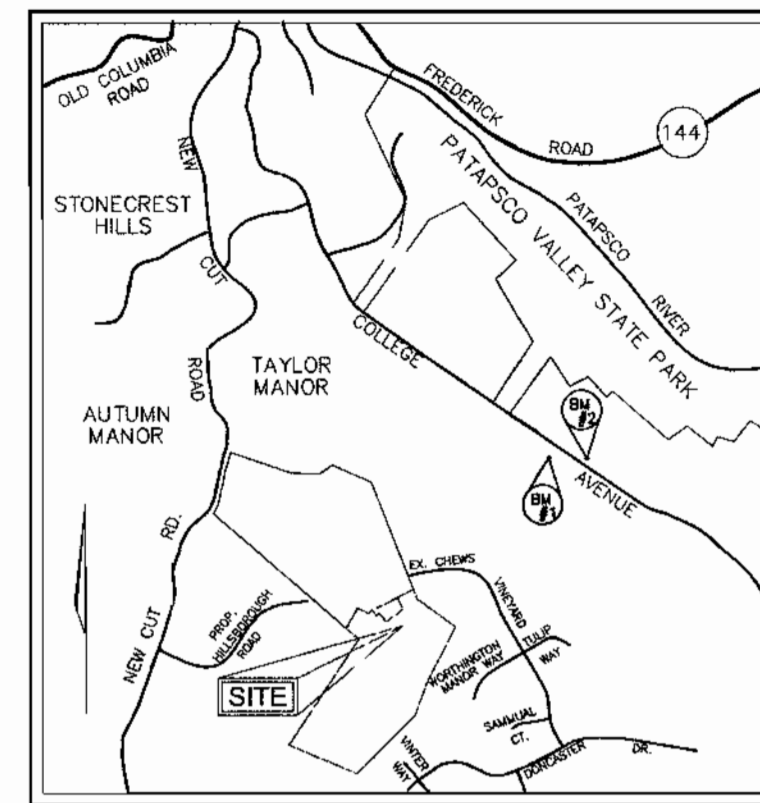
SCALE AS SHOWN
SHEET 1 OF 3

WORTHINGTON FIELDS

PHASE 5 LOTS 60-89

HOWARD COUNTY, MARYLAND

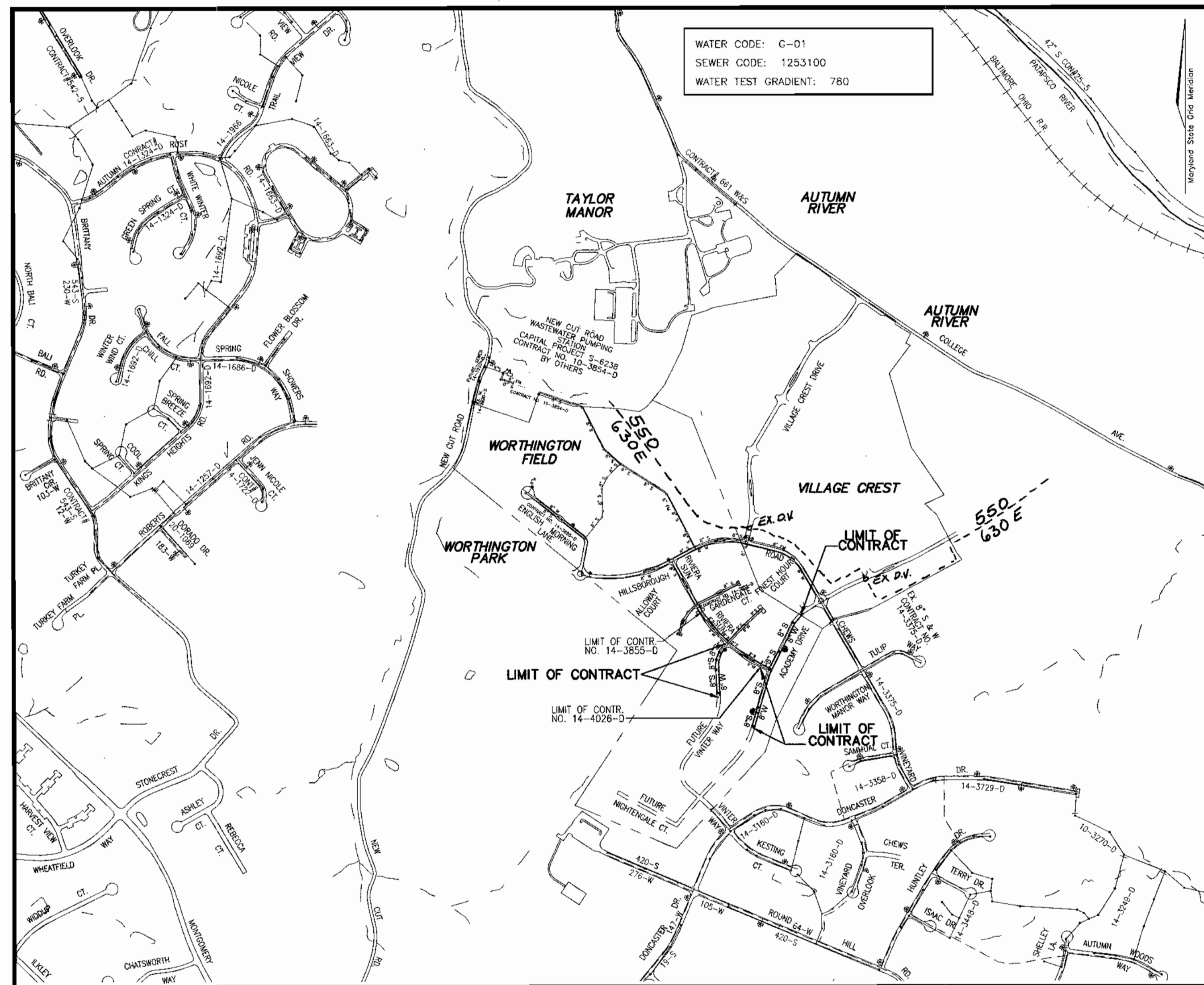
CONTRACT NO. 14 - 4245 - D



VICINITY MAP
SCALE: 1"=2000'

BENCHMARK NO. 1: COUNTY CONTROL #3044005R
3/4" REBAR 0.8' BELOW SURFACE
N. 578233.92, E. 1373142.33
ELEV. = 374.389

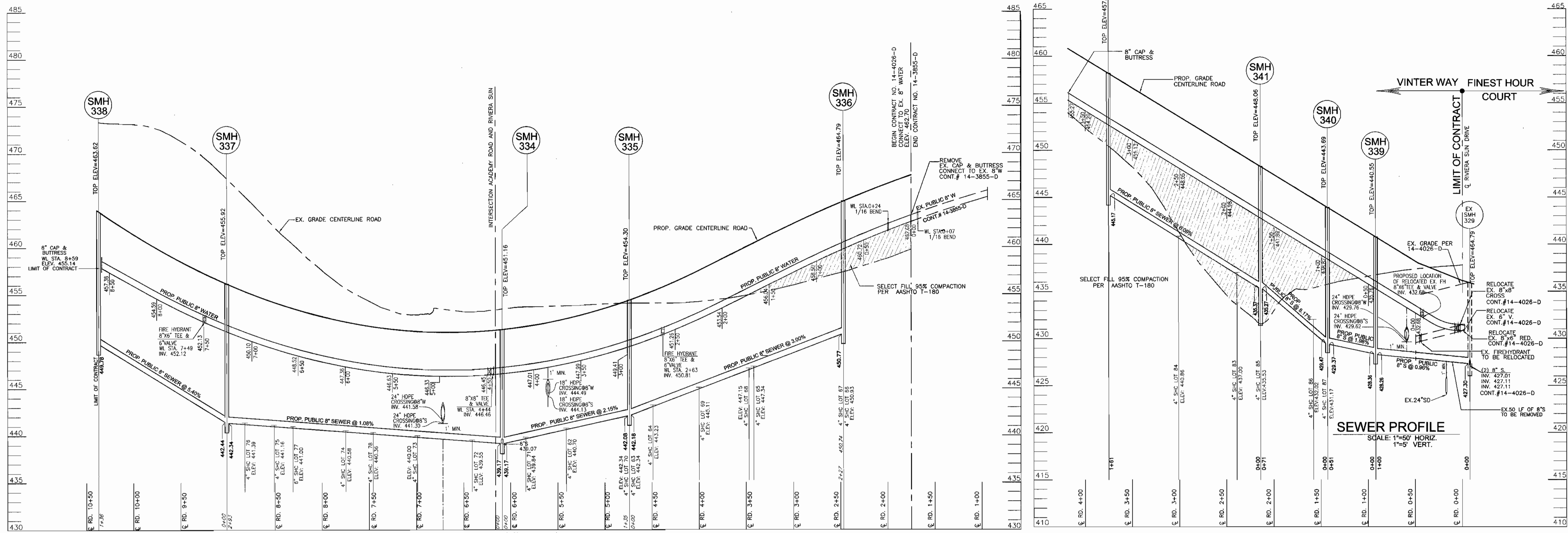
BENCHMARK NO. 2: COUNTY CONTROL #3044004R
3/4" REBAR 0.6' BELOW SURFACE
N. 578128.03, E. 1373460.71
ELEV. = 382.575



LOCATION PLAN
SCALE: 1"=600'

QUANTITIES

NAME OF UTILITY CONTRACTOR :				
SURVEY AND DRAFTING DIVISION AS-BUILT DATE :				
ITEMS	QUANTITIES ESTIMATED	AS-BUILT		
		QUANTITIES	TYPE	MANUFACTURER/SUPPLIER
8" W	1336 LF			
6" W	55 LF			
FIRE HYDRANT	2 EACH			
8" V	2 EACH			
8"x6" TEE & VALVE	2 EACH			
8" CAP & BUTTRESS	2 EACH			
8" S	1233 LF			
MANHOLES	9 EACH			
4" SHC	440 LF			
1" WHC	420 LF			



**ACADEMY ROAD
WATER AND SEWER PROFILE**
SCALE: 1"=50' HORIZ.
1"=5' VERT.

**VINTER WAY
WATER AND SEWER PROFILE**
SCALE: 1"=60' HORIZ.
1"=5' VERT.

**RIVIERA SUN DRIVE
WATER AND SEWER PROFILE**
SCALE: 1"=50' HORIZ.
1"=5' VERT.

SEWER CONNECTION TABULATION					
LOT NO	TYPE	ELEVATION @ MAN	ELEVATION @ UNIT	M.C.E.	BASEMENT
60	EX. SHC	-	-	-	-
61	EX. SHC	-	-	-	-
62	72LF-4" SHC @2%	440.70	442.14	444.64	447.28
63	72LF-4" SHC @2%	442.34	443.78	446.28	449.55
64	67LF-4" SHC @2%	443.23	444.57	447.07	452.84
65	62LF-4" SHC @2%	447.34	448.58	451.08	456.64
66	55LF-4" SHC @2%	450.93	452.03	454.53	459.37
67	75LF-4" SHC @2%	450.93	452.41	454.91	460.35
68	68LF-4" SHC @2%	447.15	448.47	450.97	455.64
69	63LF-4" SHC @2%	440.80	443.95	446.45	452.14
70	57LF-4" SHC @2%	442.34	443.48	445.98	448.24
71	58LF-4" SHC @2%	439.84	441.00	443.58	446.60
72	58LF-4" SHC @2%	439.55	440.71	443.21	444.71
73	58LF-4" SHC @2%	440.00	441.16	443.66	446.34
74	58LF-4" SHC @2%	440.58	441.74	444.24	447.56
75	59LF-4" SHC @2%	441.16	442.34	444.84	448.16
76	50LF-4" SHC @2%	441.39	443.89	446.39	451.32
77	54LF-4" SHC @2%	441.00	442.08	444.58	448.02
78	54LF-4" SHC @2%	440.36	441.44	443.94	446.61
79	EX. SHC	-	-	-	-
80	EX. SHC	-	-	-	-
81	EX. SHC	-	-	-	-
82	EX. SHC	-	-	-	-
83	60LF-4" SHC @2%	437.00	438.20	439.40	443.94
84	75LF-4" SHC @2%	440.86	442.36	443.86	449.19
85	35LF-4" SHC @5%	435.53	437.28	439.78	444.85
86	54LF-4" SHC @3%	432.02	434.72	437.92	441.10
87	54LF-4" SHC @2%	431.17	432.25	433.33	435.47
88	EX. SHC	-	-	-	-
89	EX. SHC	-	-	-	-

MANHOLE LOCATION CHART					
MANHOLE NO.	TYPE	LOCATION	CL ROAD STATION	OFFSET	TOP ELEVATION
EX SMH 333	STD. PRECAST MH HO. CO. STD. DET. G5.12	RIVIERA SUN DRIVE			
SMH 334	STD. PRECAST MH HO. CO. STD. DET. G5.12	ACADEMY ROAD	6+08	4' RT.	451.16
SMH 335	STD. PRECAST MH HO. CO. STD. DET. G5.12	ACADEMY ROAD	4+74	3' RT.	454.30
SMH 336	STD. PRECAST MH HO. CO. STD. DET. G5.12	ACADEMY ROAD	2+47	3' RT.	464.79
SMH 337	STD. PRECAST MH HO. CO. STD. DET. G5.12	ACADEMY ROAD	9+01	8' RT.	455.92
SMH 338	STD. PRECAST MH HO. CO. STD. DET. G5.12	ACADEMY ROAD	10+36	5' RT.	463.62
EX SMH 329	STD. PRECAST MH HO. CO. STD. DET. G5.12	FINEST HOUR CT.			
SMH 339	STD. PRECAST MH HO. CO. STD. DET. G5.12	VINTER WAY	0+90	7.62' RT.	440.55
SMH 340	STD. PRECAST MH HO. CO. STD. DET. G5.12	VINTER WAY	1+43	7' RT.	443.69
SMH 341	STD. PRECAST MH HO. CO. STD. DET. G5.12	VINTER WAY	2+14	7' RT.	448.06
SMH 342	STD. PRECAST MH HO. CO. STD. DET. G5.12	VINTER WAY	3+75	6.75' RT.	457.97

WATER LOCATION CHART			
CL RD STA	OFFSET	WL STA	APPURTENANCE
VINTER WAY			
4+17	-	3+63	8" CAP & BUTTRESS
ACADEMY ROAD			
2+01	3' LT.	0+24	1/16 BEND
1+68	3' LT.	-0+07	1/16 BEND
4+40	7' LT.	2+63	8"X8" FH TEE & VALVE
6+25	7' LT.	4+44	8" X 8" TEE
9+26	8' LT.	7+49	8"X8" FH TEE & VALVE
10+36	-	8+59	8" CAP & BUTTRESS

DEPARTMENT OF PUBLIC WORKS
HOWARD COUNTY, MARYLAND

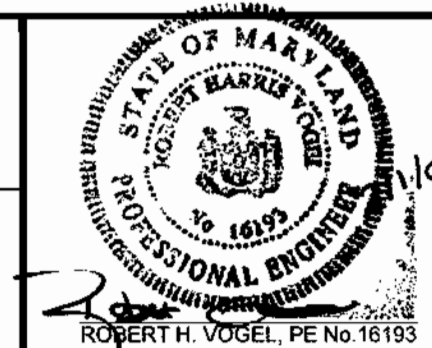
DEPARTMENT OF PLANNING & ZONING
HOWARD COUNTY, MARYLAND

**ROBERT H. VOGEL
ENGINEERING, INC.**
ENGINEERS • SURVEYORS • PLANNERS
8407 MAIN STREET
ELICOTT CITY, MD 21043 TEL: 410.461.7666
FAX: 410.461.8961

DES:	RJ	BY:	NO.	REVISION:	DATE:
DRN:	RJ				
CHK:	RHV				
DATE:	JAN 2004				

PLAN & PROFILES

600' SCALE MAP NO.	25
BLOCK NO.	20
600' SCALE MAP NO.	31
BLOCK NO.	2



WORTHINGTON FIELDS

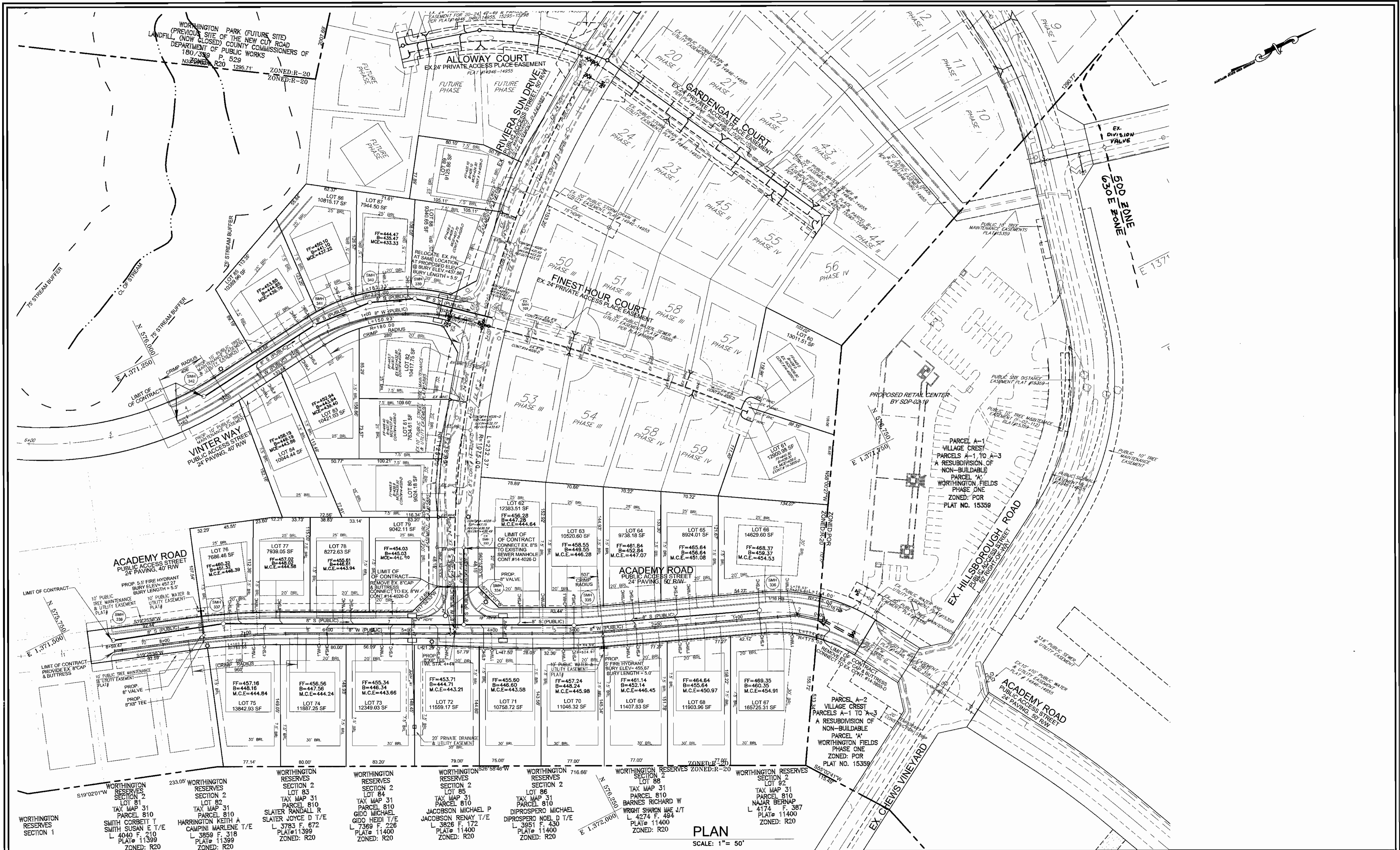
PHASE 5 LOTS 60-89
CONTRACT NO. 14-4245-D

TAX MAP 25 BLOCK 20
TAX MAP 31 BLOCK 2
2ND ELECTION DISTRICT

PARCEL 98'
HOWARD COUNTY, MARYLAND

SCALE AS SHOWN

SHEET 3 OF 3



DEPARTMENT OF PUBLIC WORKS
HOWARD COUNTY, MARYLAND

Ruth Bunge
3-1-05
CHIEF, BUREAU OF UTILITIES

DEPARTMENT OF PLANNING & ZONING
HOWARD COUNTY, MARYLAND

Paul Williams
3/1/05
CHIEF, DEVELOPMENT ENGINEERING DIVISION

ROBERT H. VOGEL
ENGINEERING, INC.
ENGINEERS • SURVEYORS • PLANNERS
8407 MAIN STREET
ELICOTT CITY, MD 21043
TEL: 410.461.7666
FAX: 410.461.8961

DES:	RJ				
DRN:	RJ				
CHK:	RHV				
DATE:	FEB. 2005	BY:	NO.	REVISION	DATE

PLAN & PROFILES

600' SCALE MAP NO. 25
BLOCK NO. 20
600' SCALE MAP NO. 31
BLOCK NO. 2

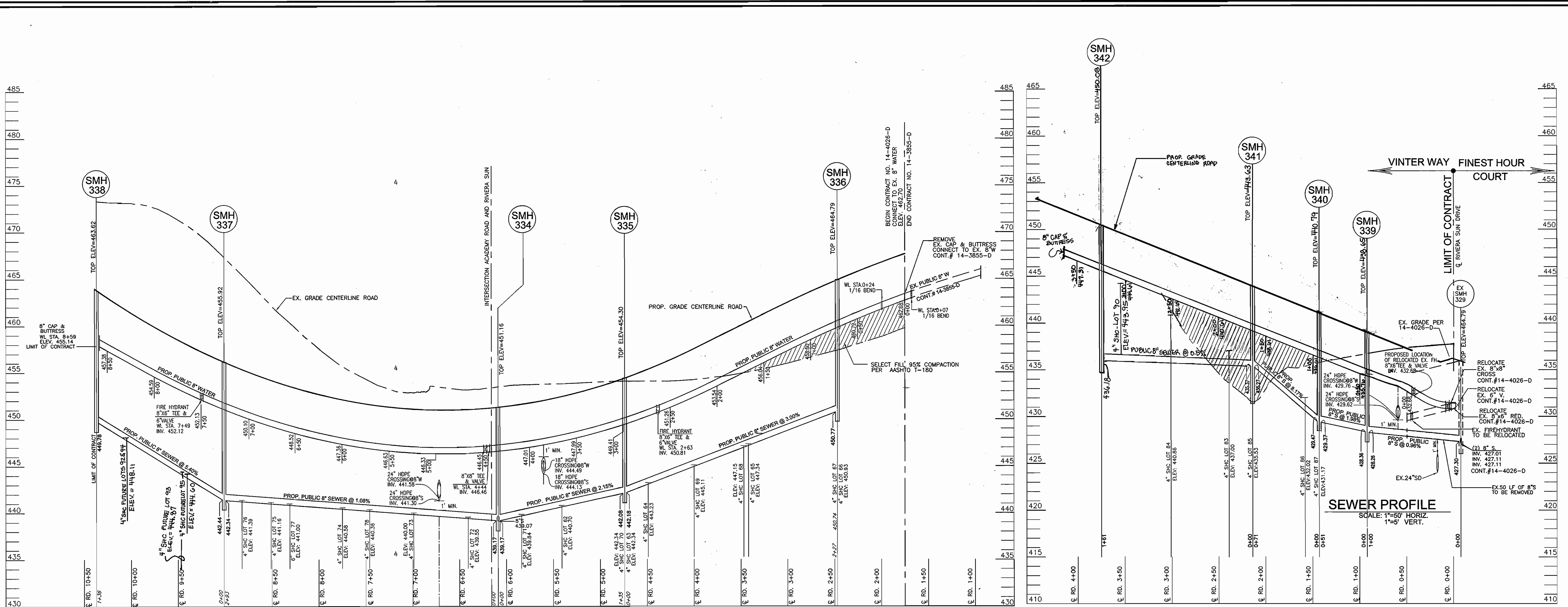


WORTHINGTON FIELDS
PHASE 5 LOTS 60-89
CONTRACT NO. 14-4245-D

TAX MAP 25 BLOCK 20
2ND ELECTION DISTRICT

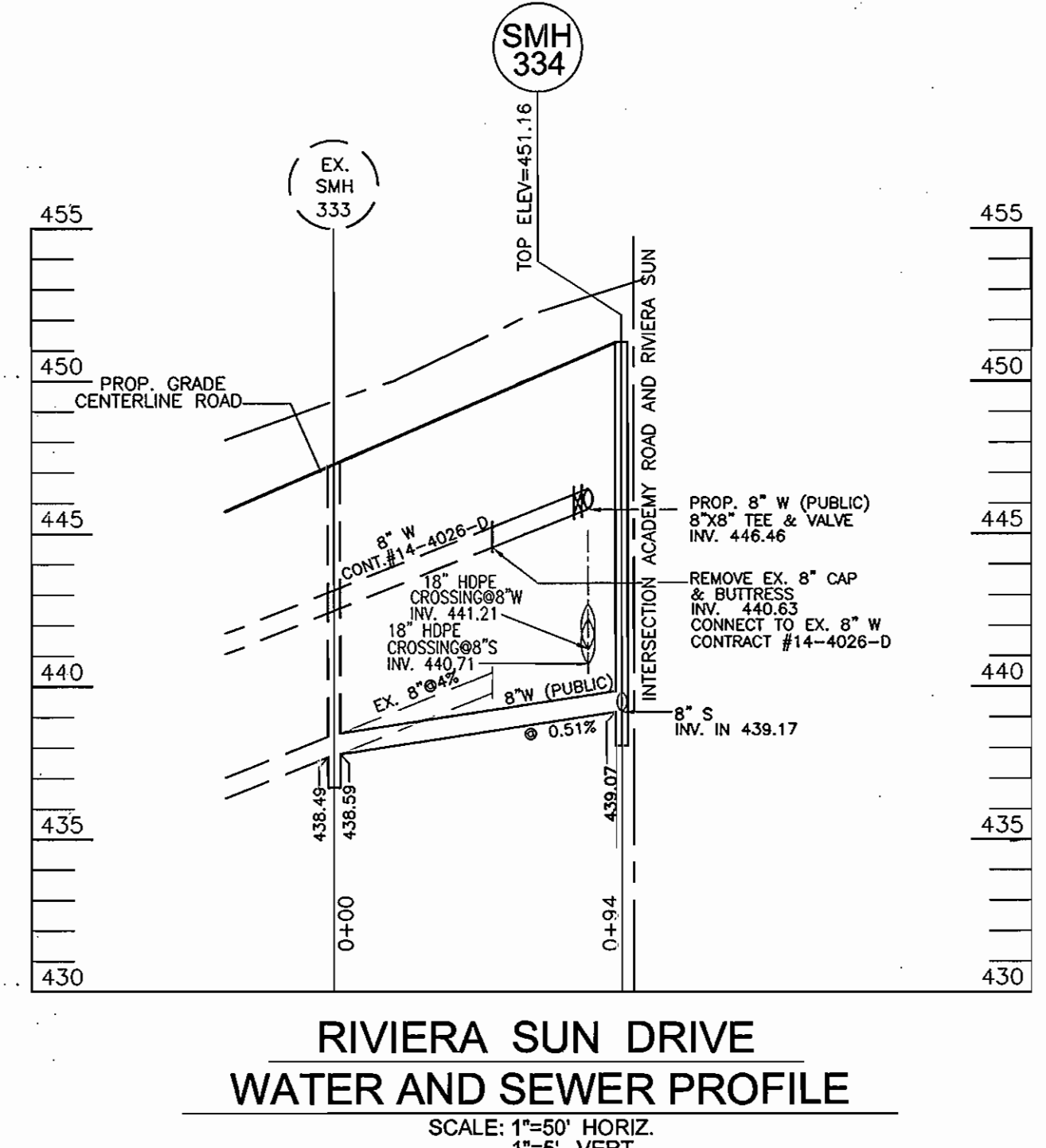
PARCEL 98'
HOWARD COUNTY, MARYLAND

SCALE AS SHOWN
SHEET 2 OF 3



**ACADEMY ROAD
WATER AND SEWER PROFILE**
SCALE: 1"=50' HORIZ.
1"=5' VERT.

**VINTER WAY
WATER AND SEWER PROFILE**
SCALE: 1"=50' HORIZ.
1"=5' VERT.



**RIVIERA SUN DRIVE
WATER AND SEWER PROFILE**
SCALE: 1"=50' HORIZ.
1"=5' VERT.

LOT NO.	TYPE	ELEVATION @ MAN.	ELEVATION @ UNIT	M.C.E.	BASEMENT
60	EX. SHC	-	-	-	-
61	EX. SHC	-	-	-	-
62	72LF-4" SHC @2%	440.70	442.14	444.64	447.28
63	72LF-4" SHC @2%	442.34	443.78	446.28	449.55
64	67LF-4" SHC @2%	443.23	444.57	447.07	452.84
65	62LF-4" SHC @2%	447.34	448.58	451.08	456.64
66	55LF-4" SHC @2%	450.93	452.03	454.53	459.37
67	75LF-4" SHC @2%	450.93	452.41	454.91	460.35
68	66LF-4" SHC @2%	447.15	448.47	450.97	455.34
69	83LF-4" SHC @5%	440.80	443.85	446.45	452.14
70	57LF-4" SHC @2%	442.34	443.48	445.98	448.24
71	58LF-4" SHC @2%	439.84	441.00	443.58	446.60
72	58LF-4" SHC @2%	439.55	440.71	443.21	444.71
73	58LF-4" SHC @2%	440.00	441.16	443.66	446.34
74	58LF-4" SHC @2%	440.58	441.74	444.24	447.56
75	59LF-4" SHC @2%	441.18	442.34	444.84	448.16
76	50LF-4" SHC @5%	441.39	443.89	446.39	451.32
77	54LF-4" SHC @2%	441.00	442.08	444.58	448.02
78	54LF-4" SHC @2%	440.36	441.44	443.94	446.61
79	EX. SHC	-	-	-	-
80	EX. SHC	-	-	-	-
81	EX. SHC	-	-	-	-
82	EX. SHC	-	-	-	-
83	60LF-4" SHC @2%	437.00	438.20	439.40	443.94
84	75LF-4" SHC @2%	440.86	442.36	443.86	449.19
85	35LF-4" SHC @5%	435.53	437.28	439.78	444.85
86	54LF-4" SHC @5%	439.02	439.72	437.22	441.10
87	54LF-4" SHC @2%	431.17	432.25	433.33	435.47
88	EX. SHC	-	-	-	-
89	EX. SHC	-	-	-	-
FUTURE LOT 90		443.95	445.65	448.15	-
FUTURE LOT 92		448.11	449.21	451.31	-
FUTURE LOT 93		444.87	446.07	448.87	-

MANHOLE NO.	TYPE	LOCATION	CL. ROAD STATION	OFFSET	TOP ELEVATION
EX. SMH 333	STD. PRECAST MH HO. CO. STD. DET. G5.12	RIVIERA SUN DRIVE	6+09	4' RT.	451.16
SMH 334	STD. PRECAST MH HO. CO. STD. DET. G5.12	ACADEMY ROAD	4+74	3' RT.	454.30
SMH 335	STD. PRECAST MH HO. CO. STD. DET. G5.12	ACADEMY ROAD	2+47	3' RT.	464.79
SMH 337	STD. PRECAST MH HO. CO. STD. DET. G5.12	ACADEMY ROAD	9+01	8' RT.	455.92
SMH 338	STD. PRECAST MH HO. CO. STD. DET. G5.12	ACADEMY ROAD	10+36	5' RT.	463.62
EX. SMH 329	STD. PRECAST MH HO. CO. STD. DET. G5.12	FINEST HOUR CT.	-	-	-
SMH 339	STD. PRECAST MH HO. CO. STD. DET. G5.12	VINTER WAY	0+90	7.62' RT.	458.65
SMH 340	STD. PRECAST MH HO. CO. STD. DET. G5.12	VINTER WAY	1+43	7' RT.	460.79
SMH 341	STD. PRECAST MH HO. CO. STD. DET. G5.12	VINTER WAY	2+14	7' RT.	463.63
SMH 342	STD. PRECAST MH HO. CO. STD. DET. G5.12	VINTER WAY	3+75	6.75' RT.	450.08

CL. RD STA.	OFFSET	WL STA.	APPURTENANCE
VINTER WAY			
4+17	-	3+63	8" CAP & BUTTRESS
ACADEMY ROAD			
2+01	3' LT.	0+24	1/16 BEND
1+68	3' LT.	-0+07	1/16 BEND
4+40	7' LT.	2+63	8"X8" FH TEE & VALVE
6+25	7' LT.	4+44	8" X 8" TEE
9+26	8' LT.	7+49	8"X8" FH TEE & VALVE
10+36	-	8+59	8" CAP & BUTTRESS

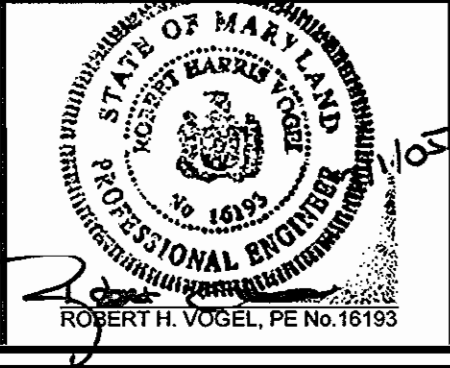
DEPARTMENT OF PUBLIC WORKS
HOWARD COUNTY, MARYLAND
R. H. Vogel
2-14-05
CHIEF, BUREAU OF UTILITIES

DEPARTMENT OF PLANNING & ZONING
HOWARD COUNTY, MARYLAND
M. J. ...
3/14/05
CHIEF, DEVELOPMENT ENGINEERING DIVISION

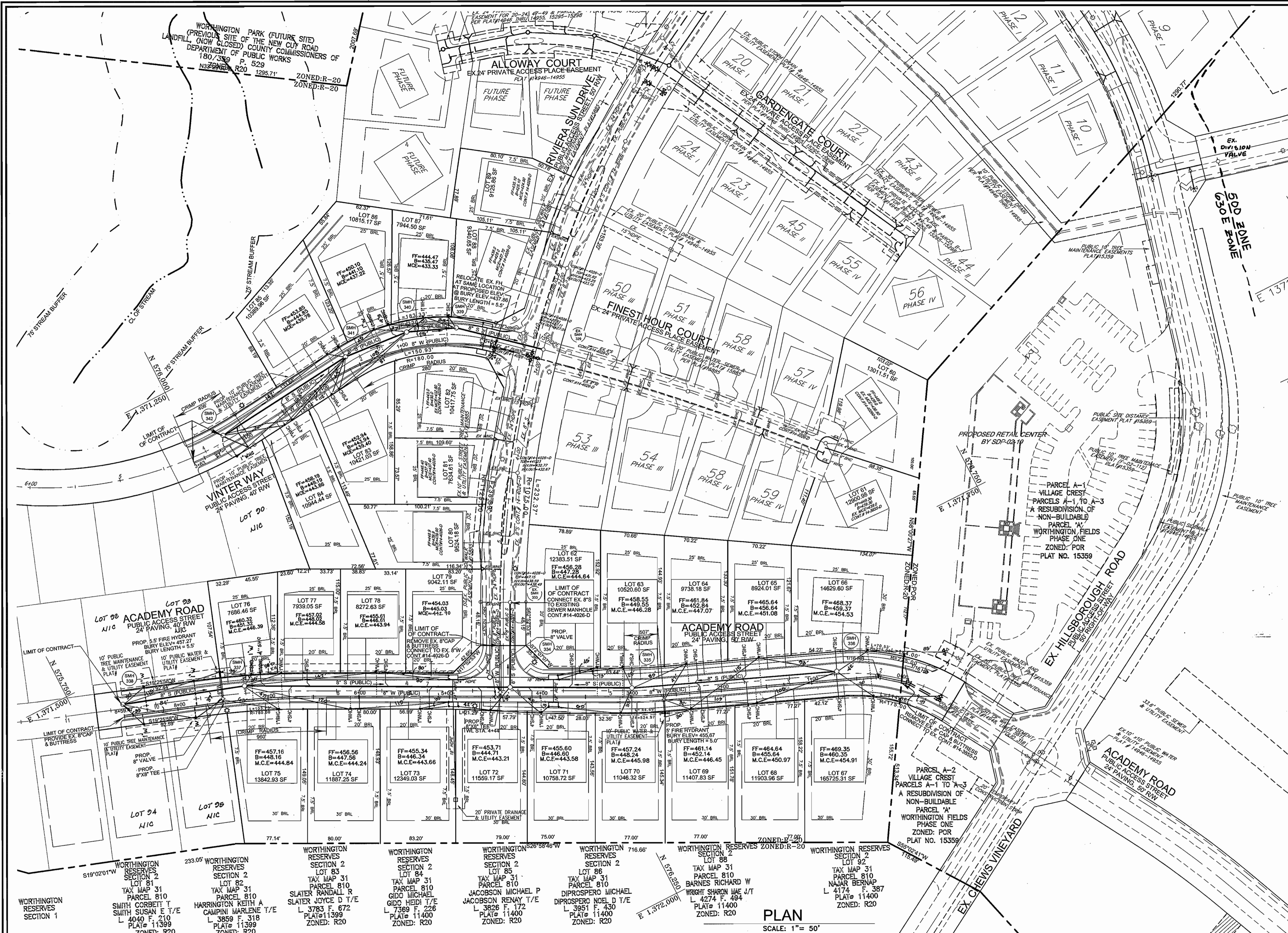
**ROBERT H. VOGEL
ENGINEERING, INC.**
ENGINEERS • SURVEYORS • PLANNERS
8407 MAIN STREET
ELLICOTT CITY, MD 21043
TEL: 410.461.7666
FAX: 410.461.8961

DES: RJ			
DRN: RJ			
CHK: RHV			
DATE: 2004			
BY NO.	ADD HOUSE CONNECTIONS, FUTURE LOTS 90, 92-93	6/18/06	
REVISION			

PLAN & PROFILES
600' SCALE MAP NO. 25
BLOCK NO. 20
600' SCALE MAP NO. 31
BLOCK NO. 2



WORTHINGTON FIELDS
PHASE 5 LOTS 60-89
CONTRACT NO. 14-4245-D
TAX MAP 25 BLOCK 20
TAX MAP 31 BLOCK 2
2ND ELECTION DISTRICT
PARCEL 98'
HOWARD COUNTY, MARYLAND
SCALE AS SHOWN
SHEET 3 OF 3



FIELD MEASUREMENTS FOR SEWER ASBLUIT ONLY

LOT #	FROM	TO	DIS. (FT.)
62	NW COR. INLET	4" SHC	23
62	N.E. COR. INLET	"	13
63	SH 205	"	24
63	S.E. COR. INLET	"	83
64			
65	SH 205	4" SHC	130
65	SH 206	"	103
66	SH 206	"	23
66	SH LOT 65	"	103
67	SH 206	"	25
			103
68	SH 206	4" SHC	130
68	SH 205	"	43
69	F.H. VAL.	"	41
69	F.H.	"	80
70	F.H. VAL.	"	83
70	NW COR. INLET	"	21
71	SW COR. INLET	"	83
71	N.E. COR. INLET	"	28
72	N.E. COR. INLET	"	26
72	S.E. COR. INLET	"	18
73	S.E. COR. INLET	"	28
73	N.E. COR. INLET	"	22
74	N.E. COR. INLET	"	22
74	S.E. COR. INLET	"	174
75	NW COR. INLET	"	176
75	SW COR. INLET	"	23
76	SH 207	"	44
76	F.H.	"	71
77	SH 207	"	70
78	NW COR. INLET	"	70
78	SW COR. INLET	"	
			87
83	SH 340	4" SHC	37
83	SH 341	"	80
84	SH 342	"	82
84	SH 341	"	14
85	SH 341	"	76
85	SH 340	"	23
86	SH 340	"	75
86	SH 339	"	40
87	NW COR. INLET	"	17
87	SH 339	"	
			80
90	SH 342	4" SHC	30
90	SH 342	"	34
92	SH 338	"	83
92	F.H.	"	22
93	F.H.	"	42
94	SH 338	"	42
95	SH 337	"	42

PLAN
SCALE: 1" = 50'

DEPARTMENT OF PUBLIC WORKS HOWARD COUNTY, MARYLAND RUTH BUNGER 3-1-05 CHIEF, BUREAU OF UTILITIES	DEPARTMENT OF PLANNING & ZONING HOWARD COUNTY, MARYLAND [Signature] 3/1/05 CHIEF, DEVELOPMENT ENGINEERING DIVISION	ROBERT H. VOGEL ENGINEERING, INC. ENGINEERS • SURVEYORS • PLANNERS 8407 MAIN STREET, ELLICOTT CITY, MD 21043 TEL: 410.461.7666 FAX: 410.461.8961	DES: RJ DRN: RJ CHK: RHW DATE: FEB. 2005	PLAN & PROFILES 600' SCALE MAP NO. 25 BLOCK NO. 20 600' SCALE MAP NO. 31 BLOCK NO. 2		WORTHINGTON FIELDS PHASE 5 LOTS 60-89 CONTRACT NO. 14-4245-D TAX MAP 25 BLOCK 20 TAX MAP 31 BLOCK 2 2ND ELECTION DISTRICT PARCEL '98' HOWARD COUNTY, MARYLAND	SCALE AS SHOWN SHEET 2 OF 3
---	---	--	---	--	--	---	--------------------------------