


QUANTITIES				
ITEMS	QUANTITIES ESTIMATED	AS-BUILT		
		QUANTITIES	TYPE	MANUFACTURER/SUPPLIER
6" WATER	25 L.F.			
8" WATER MAIN	813 L.F.			
8" CAP	1 EA.			
8"x8" TEE	3 EA.			
8" 1/16 H.B.	2 EA.			
8" VALVE	3 EA.			
8"x6" FHT & VALVE	2 EA.			
FIRE HYDRANT	2 EA.			
SEWER MANHOLE	ONE			
NAME OF UTILITY CONTRACTOR:				
SURVEY AND DRAFTING DIV.		CHECKBOX AS-BUILT DATE:		

TYPE OF BUILDING	OFFICE
NUMBER OF UNITS	1
NUMBER OF S.H.C.'S	N/A (PER SDP-05-36)
NUMBER OF W.H.C.'S	1
DRAINAGE AREA	LITTLE PATUXENT
TREATMENT PLANT	LITTLE PATUXENT

GENERAL NOTES

- PART I**
- APPROXIMATE LOCATIONS OF EXISTING MAINS ARE SHOWN. THE CONTRACTOR SHALL TAKE ALL NECESSARY PRECAUTIONS TO PROTECT EXISTING MAINS AND SERVICES AND MAINTAIN UNINTERRUPTED SUPPLY. ANY DAMAGE INCURRED SHALL BE REPAIRED IMMEDIATELY TO THE SATISFACTION OF THE ENGINEER AT THE CONTRACTOR'S EXPENSE.
 - ALL HORIZONTAL CONTROLS ARE BASED ON MARYLAND STATE COORDINATES, NAD 83/91.
 - ALL VERTICAL CONTROLS ARE BASED ON NAVD 88.
 - ALL PIPE ELEVATIONS SHOWN ARE INVERT ELEVATIONS UNLESS OTHERWISE NOTED ON THE PLANS.
 - CLEAR ALL UTILITIES BY A MINIMUM OF 12". CLEAR ALL POLES BY 5'-0" MINIMUM OR TUNNEL AS REQUIRED UNLESS OTHERWISE NOTED. THE OWNER HAS CONTACTED THE UTILITY COMPANIES AND HAS MADE ARRANGEMENTS FOR BRACING OF POLES AS SHOWN ON THE DRAWINGS. IN THE EVENT THE CONTRACTOR'S WORK REQUIRES THE BRACING OF ADDITIONAL POLES, ANY COST INCURRED BY THE OWNER FOR THE BRACING OF ADDITIONAL POLES OR DAMAGES SHALL BE DEDUCTED FROM MONIES OWED THE CONTRACTOR. THE CONTRACTOR SHALL COORDINATE WITH THE UTILITY COMPANIES TO SCHEDULE THE BRACING OF THE POLES.
 - FOR DETAILS NOT SHOWN ON THE DRAWINGS, AND FOR MATERIALS AND CONSTRUCTION METHODS USE HOWARD COUNTY DESIGN MANUAL, VOLUME IV, STANDARD SPECIFICATIONS AND DETAILS FOR CONSTRUCTION (LATEST EDITION). THE CONTRACTOR SHALL HAVE A COPY OF VOLUME IV ON THE JOB.
 - WHERE TEST PITS HAVE BEEN MADE ON EXISTING UTILITIES, THEY ARE NOTED BY THE SYMBOL  AT THE LOCATIONS OF THE TEST PIT. A NOTE OR NOTES CONTAINING THE RESULTS OF THE TEST PIT OR PITS IS INCLUDED ON THE DRAWINGS. EXISTING UTILITIES IN THE VICINITY OF THE PROPOSED WORK FOR WHICH TEST PITS HAVE NOT BEEN DUG SHALL BE LOCATED BY THE CONTRACTOR TWO WEEKS IN ADVANCE OF CONSTRUCTION OPERATIONS AT HIS OWN EXPENSE.
 - THE CONTRACTOR SHALL NOTIFY THE FOLLOWING UTILITY COMPANIES OR AGENCIES AT LEAST (5) WORKING DAYS BEFORE STARTING WORK SHOWN ON THESE PLANS.

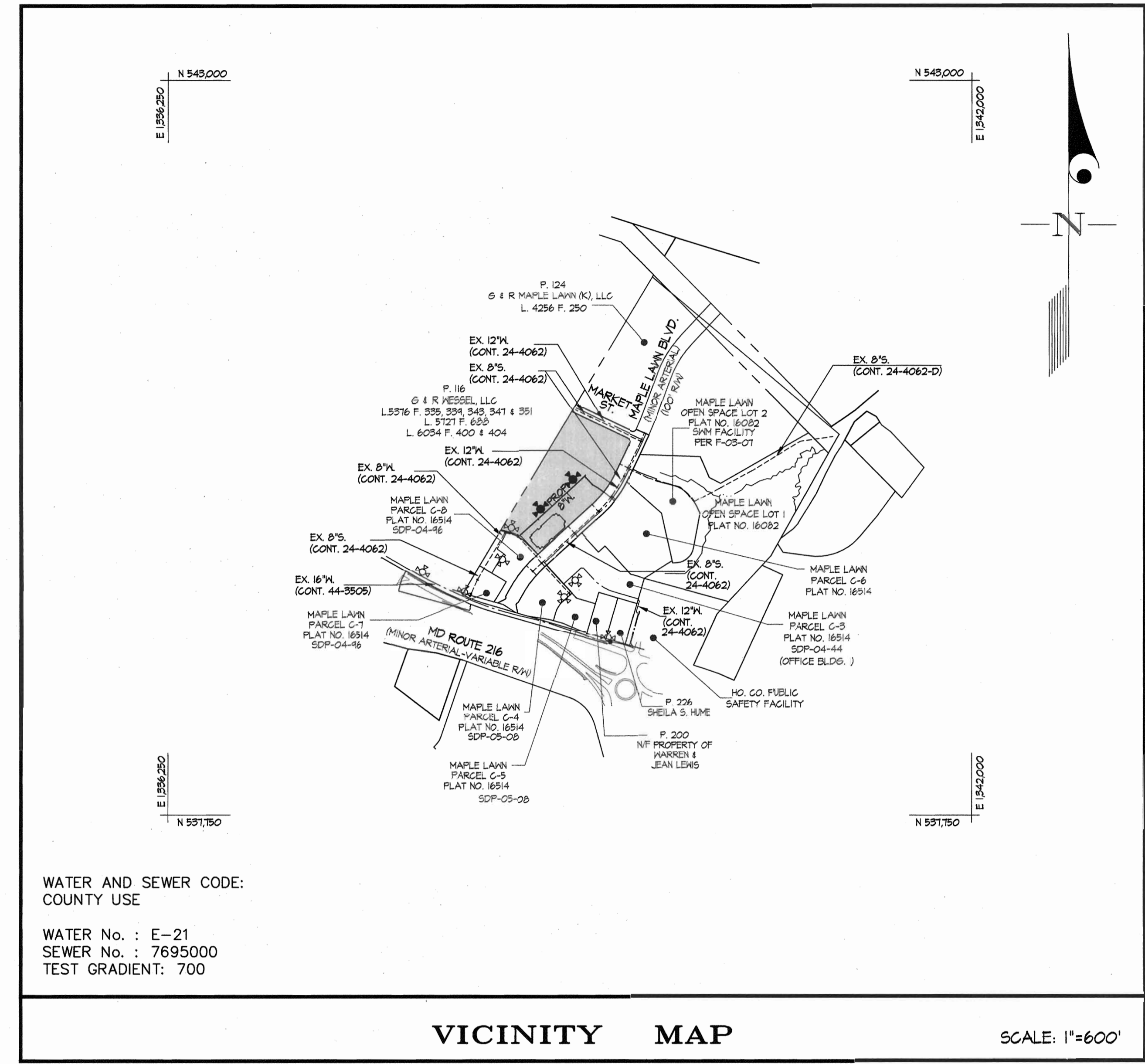
AT&T	1-800-252-1133
BGE (CONTRACTOR SERVICES)	410-850-4620
BGE (UNDER GROUND DAMAGE CONTROL)	410-781-4068
BUREAU OF UTILITIES	410-313-4400
COLONIAL PIPELINE CO.	410-715-1340
MISS UTILITY	1-800-251-TTTT
STATE HIGHWAY ADMINISTRATION	410-531-5533
VERIZON	1-800-743-0033/410-224-4210
 - TREES AND SHRUBS ARE TO BE PROTECTED FROM DAMAGE TO MAXIMUM EXTENT. TREES AND SHRUBS LOCATED WITHIN THE CONSTRUCTION STRIP ARE NOT TO BE REMOVED OR DAMAGED BY THE CONTRACTOR.
 - THE CONTRACTOR SHALL REMOVE TREES, STUMPS AND ROOTS ALONG LINE OF EXCAVATION. PAYMENT FOR SUCH REMOVAL SHALL BE INCLUDED IN THE UNIT PRICE BID FOR CONSTRUCTION OF THE MAIN.
 - THE CONTRACTOR SHALL NOTIFY THE BUREAU OF HIGHWAYS, HOWARD COUNTY, AT 410-313-2450 AT LEAST FIVE (5) WORKING DAYS BEFORE ANY OPEN CUTTING OR BORING/JACKING OF ANY COUNTY ROAD OR BORING/JACKING OPERATION ON COUNTY ROADS FOR LAYING WATER/SEWER MAINS OR HOUSE CONNECTIONS. THE APPROVAL OF THESE DRAWINGS WILL CONSTITUTE COMPLIANCE WITH DPW REQUIREMENT PER SECTION 18.11(A) OF THE HOWARD COUNTY CODE.

PART II - WATER

- ALL WATER MAINS TO BE D.I.P. CLASS 52 UNLESS OTHERWISE NOTED.
- TOPS OF ALL WATER MAINS SHALL HAVE A MINIMUM OF 3'-6" COVER UNLESS OTHERWISE NOTED.
- VALVES ADJACENT TO TEES SHALL BE STRAPPED TO TEES.
- ALL FITTINGS SHALL BE BUTTRESSED OR ANCHORED WITH CONCRETE IN ACCORDANCE WITH THE STANDARD DETAILS UNLESS OTHERWISE PROVIDED FOR ON THE DRAWINGS.
- FIRE HYDRANTS SHALL BE SET TO THE BURY LINE ELEVATIONS SHOWN ON THE DRAWINGS. ALL FIRE HYDRANTS SHALL BE INSTALLED IN ACCORDANCE WITH STANDARD DETAILS. SOIL AROUND THE FIRE HYDRANT SHALL BE COMPACTED IN ACCORDANCE WITH SECTION 1000 AND 1005 OF THE STANDARD SPECIFICATIONS.
- THE CONTRACTOR SHALL NOT OPERATE ANY WATER MAIN VALVES ON THE EXISTING WATER SYSTEM.

PART III - SEWER

- ALL SEWER MAINS SHALL BE D.I.P. OR P.V.C. UNLESS OTHERWISE NOTED.
- ALL MANHOLES SHALL BE 4'-0" INSIDE DIAMETER UNLESS OTHERWISE NOTED.
- FORCE MAINS SHALL BE D.I.P. ONLY.
- MANHOLES SHOWN WITH 12" AND 16" WALLS ARE FOR BRICK MANHOLES ONLY.
- MANHOLES DESIGNATED W.T. IN PLAN AND PROFILE SHALL HAVE WATERTIGHT FRAME AND COVER, STANDARD DETAIL 65.52. WHERE WATERTIGHT MANHOLE FRAMES AND COVERS ARE USED, SET TOP OF FRAME 1'-6" ABOVE FINISHED GRADE UNLESS OTHERWISE NOTED ON THE DRAWINGS.
- HOUSE(S) WITH THE SYMBOL "C.N.S." INDICATES THAT THE CELLAR CANNOT BE SERVED.



WATER AND SEWER CODE:
COUNTY USE

WATER No. : E-21
SEWER No. : 7695000
TEST GRADIENT: 700

VICINITY MAP

SCALE: 1"=600'

CONTRACT No. 24-4243-D
MAPLE LAWN FARMS
PARCEL C-9
PLAT No. 16624
HOWARD COUNTY, MARYLAND
DEPARTMENT OF PUBLIC WORKS

SEDIMENT CONTROL MEASURES WILL BE IMPLEMENTED IN ACCORDANCE WITH SECTION 209 OF THE SPECIFICATIONS & WITH SITE DEVELOPMENT PLAN SDP-05-036 DRAWINGS FOR SEDIMENT & EROSION CONTROL.

REVIEWED FOR HOWARD COUNTY SOIL CONSERVATION DISTRICT AND MEETS TECHNICAL REQUIREMENT.

John K. Roberts 12/28/04
SIGNATURE DATE

U.S.D.A. NATURAL RESOURCES CONSERVATION SERVICE

THIS DEVELOPMENT PLAN IS APPROVED FOR SOIL EROSION AND SEDIMENT CONTROL BY THE HOWARD COUNTY SOIL CONSERVATION DISTRICT.

APPROVED
John K. Roberts 12/28/04
HOWARD S.C.D. DATE

OWNER/DEVELOPER:
64R MAPLE LAWN, INC. et al.
SUITE 410, HOODHOLME CENTER
1824 REISTERSTOWN ROAD
BALTIMORE, MD 21286
Attn: CHARLIE O'DONOVAN
410-484-8400

GLW FILE #03052
96079\03052\Public\Map\03052-tes-cover.dwg

DEPARTMENT OF PUBLIC WORKS
HOWARD COUNTY, MARYLAND

Robert M. Bennett 12-16-04
CHIEF, BUREAU OF UTILITIES DATE

DEPARTMENT OF PLANNING AND ZONING
HOWARD COUNTY, MARYLAND

Mark Knech 1/19/05
CHIEF, DEVELOPMENT ENGINEERING DIVISION DATE

GLW GUTSCHICK LITTLE & WEBER, P.A.
CIVIL ENGINEERS, LAND SURVEYORS, LAND PLANNERS, LANDSCAPE ARCHITECTS
3909 NATIONAL DRIVE - SUITE 250 - BURTONSVILLE OFFICE PARK
BURTONSVILLE, MARYLAND 20866
TEL: 301-421-4024 BAL: 410-880-1820 DC/VA: 301-989-2524 FAX: 301-421-4186



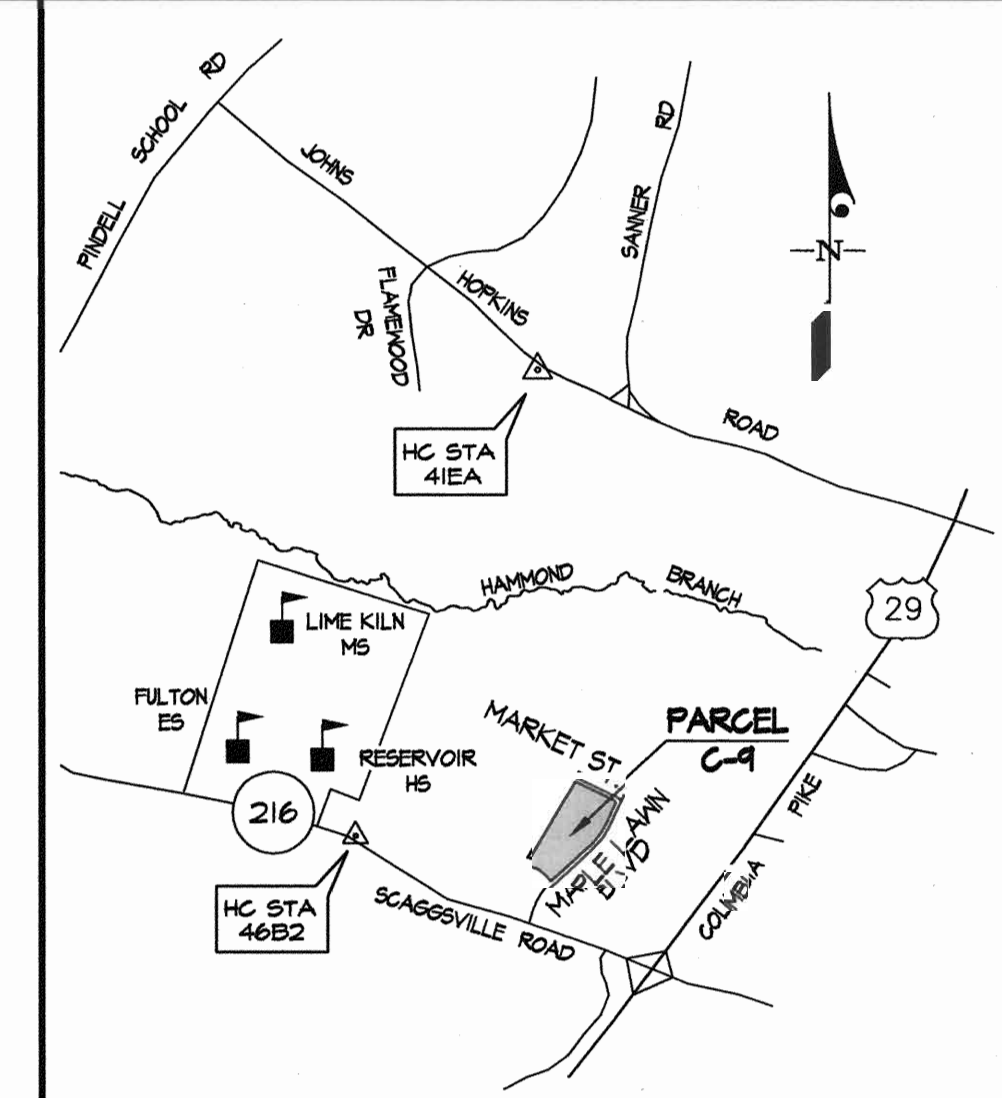
DES: MBT					
DRN: KLP					
CHK: mbt/kg					
DATE: DEC. 2004	BY	NO	REVISION	DATE	

WATER EXTENSION PLAN

600' SCALE MAP NO. 46 BLOCK NO. 4

MAPLE LAWN FARMS
BUSINESS DISTRICT
PARCEL C-9
HOWARD COUNTY, MARYLAND
ELECTION DISTRICT No. 5
CONTRACT No. 24-4243-D

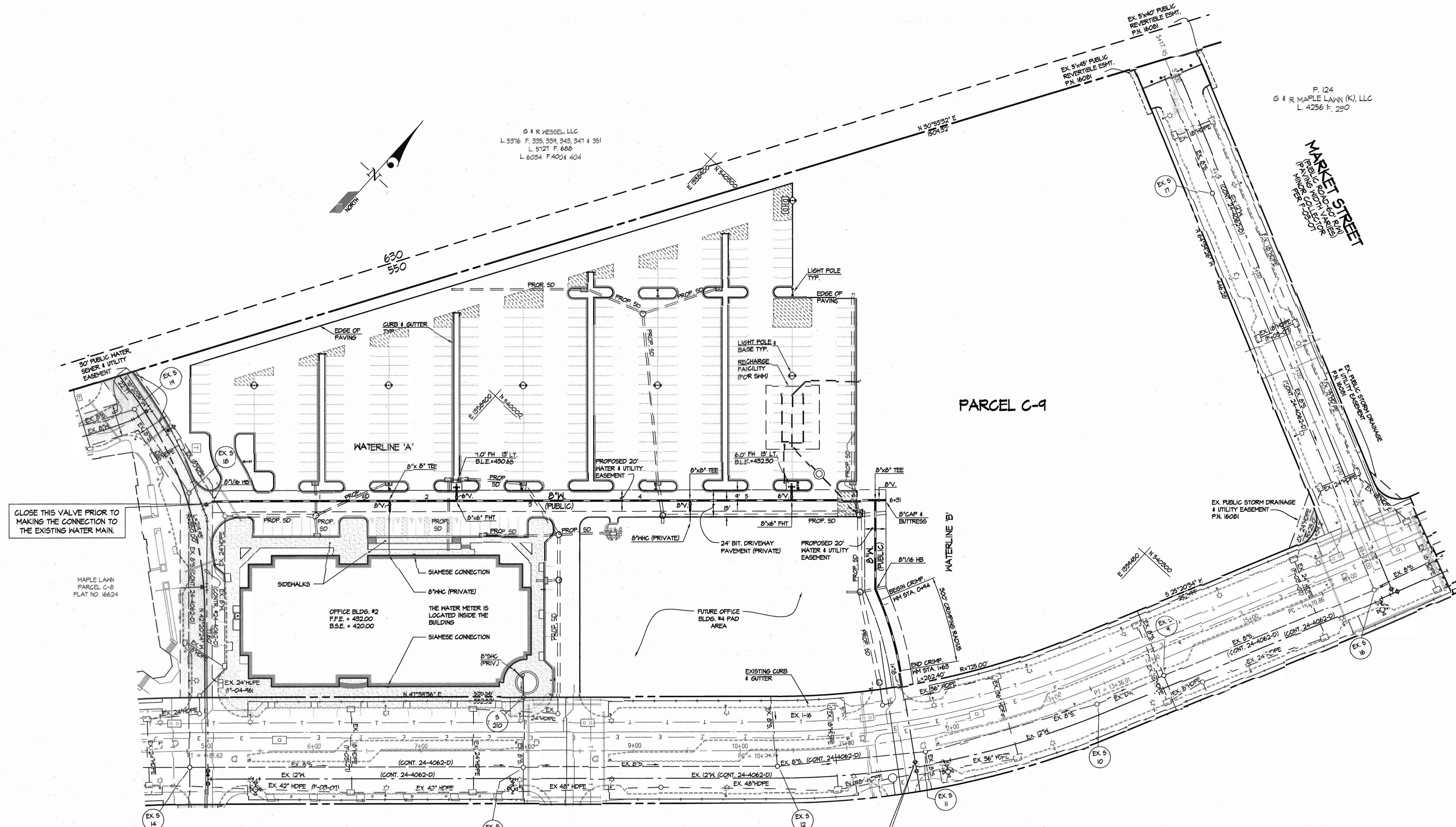
SCALE AS SHOWN
SHEET 1 OF 3



BENCH MARK LOCATION MAP
SCALE: 1" = 2000'

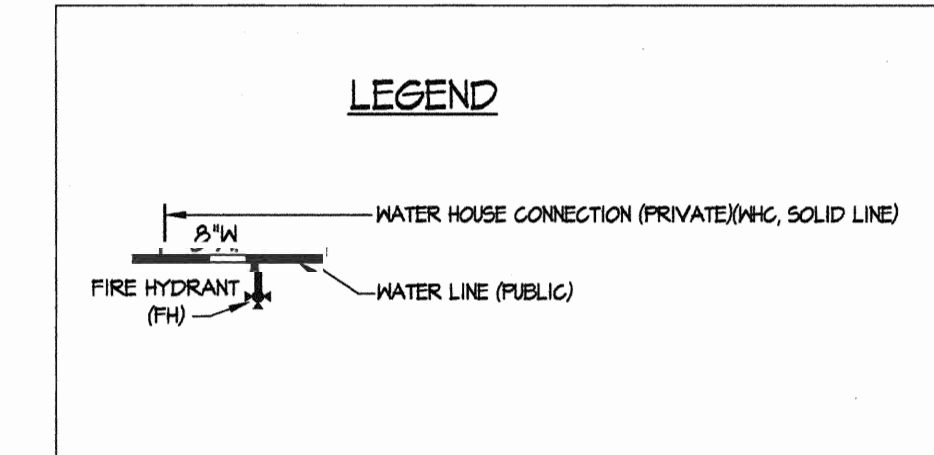
BENCHMARKS

41EA	ELEV. = 407.05
STANDARD DISC ON CONCRETE MONUMENT	
46B2	ELEV. = 474.67
STANDARD DISC ON CONCRETE MONUMENT	



FITTING INFORMATION

LOCATION	FITTING	NAD 83 COORDINATES
WATERLINE 'A'		
M.M. STA. 0+00	8" 1/2" HB	N 539144.76 E 133871.46
M.M. STA. 1+66	8" x 8" TEE	N 539260.64 E 133889.14
M.M. STA. 2+28	8" x 8" FHT	N 539402.82 E 133899.44
M.M. STA. 4+47	8" x 8" TEE	N 540050.28 E 133910.26
M.M. STA. 5+42	8" x 8" FHT	N 540114.33 E 133917.52
M.M. STA. 6+21	8" x 8" TEE	N 540167.11 E 133922.48
M.M. STA. 6+31	8" CAP	
WATERLINE 'B'		
M.M. STA. 0+83	8" 1/2" HB	N 540105.74 E 1339285.40



CLOSE THIS VALVE PRIOR TO MAKING THE CONNECTION TO THE EXISTING WATER MAIN.

CLOSE THIS VALVE PRIOR TO MAKING THE CONNECTION TO THE EXISTING WATER MAIN.

MAPLE LAWN PARCEL C-9 PLAT NO. 16624

MAPLE LAWN BOULEVARD
(100' MINOR ARTERIAL PUBLIC ROAD R.O.W. WITH VARIABLE PAVEMENT WIDTH VARIABLE PAVING WIDTH PER F-03-01)

G & R WESSEL, LLC
L. 5576 F. 359, 354, 343, 341 & 351
L. 5727 F. 689
L. 6034 F. 4024 404

P. 124
G & R MAPLE LAWN (K), LLC
L. 4256 F. 250

DEPARTMENT OF PUBLIC WORKS
HOWARD COUNTY, MARYLAND
Robert M. Bringer 12-16-04
CHIEF, BUREAU OF UTILITIES DATE

DEPARTMENT OF PLANNING AND ZONING
HOWARD COUNTY, MARYLAND
[Signature] 1/19/05
CHIEF, DEVELOPMENT ENGINEERING DIVISION DATE

GLW GUTSCHICK LITTLE & WEBER, P.A.
CIVIL ENGINEERS, LAND SURVEYORS, LAND PLANNERS, LANDSCAPE ARCHITECTS
3909 NATIONAL DRIVE - SUITE 250 - BURTONSVILLE OFFICE PARK
BURTONSVILLE, MARYLAND 20866
TEL: 301-421-4024 BALT: 410-880-1820 DC/VA: 301-989-2524 FAX: 301-421-4186

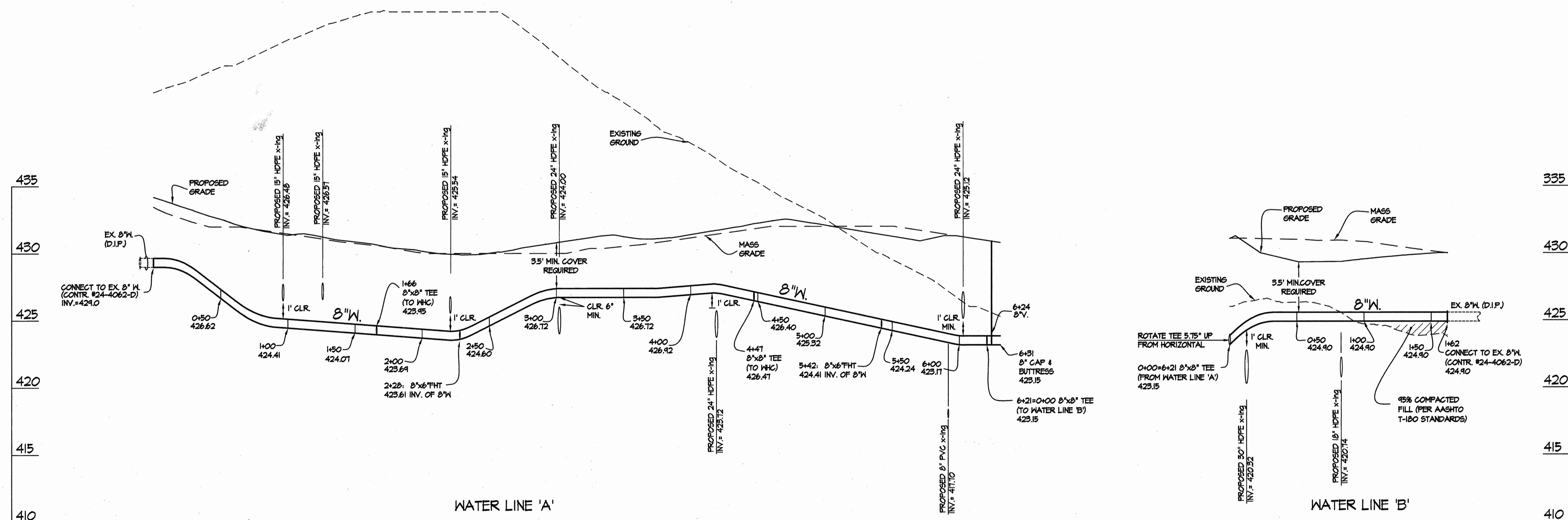


DES: MBT				
DRN: KLP				
CHK: mbt/kg				
DEC: []				
DATE: 2004				
BY	NO	REVISION	DATE	

WATER EXTENSION PLAN
SCALE: 1"=50'
600' SCALE MAP NO. 46 BLOCK NO. 4

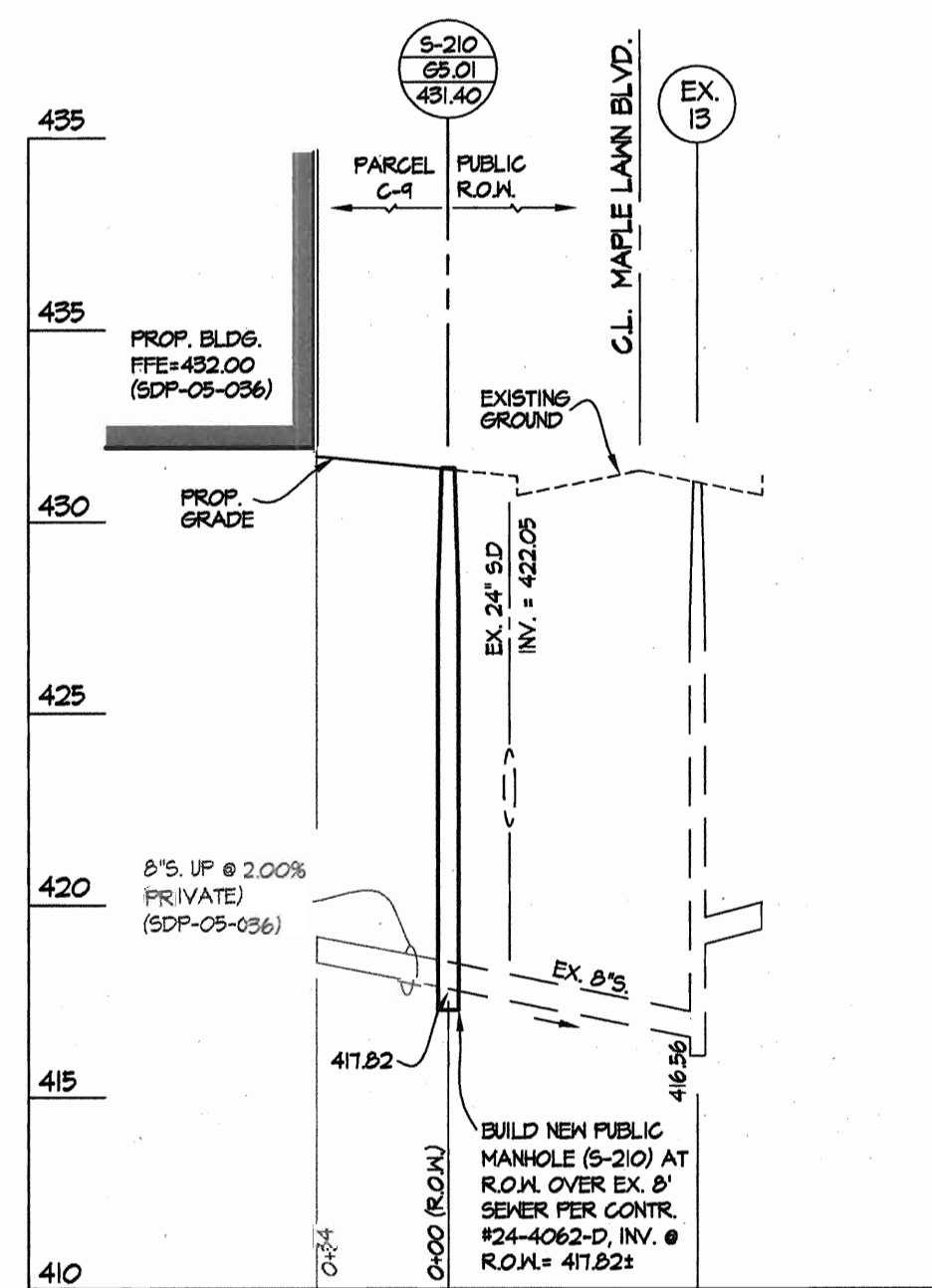
MAPLE LAWN FARMS
BUSINESS DISTRICT
PARCEL C-9
HOWARD COUNTY, MARYLAND
ELECTION DISTRICT No. 5
CONTRACT No. 24-4243-D
SCALE AS SHOWN
SHEET 2 OF 3

GLW FILE #03052
96079\03052\Public Work\03052-fws.dwg



WATER PROFILE

WATER PROFILE



SEWER PROFILE

PROFILES
SCALE: 1" = 5' VERT.
1" = 50' HORIZ.

GLW FILE #03052
96079\03052\Public\Wat\03052-hs-profile.dwg

DEPARTMENT OF
PUBLIC WORKS
HOWARD COUNTY, MARYLAND
Robert Beisinger 12-16-04
CHIEF, BUREAU OF UTILITIES DATE

DEPARTMENT OF
PLANNING AND ZONING
HOWARD COUNTY, MARYLAND
John L. [Signature] 1/19/05
CHIEF, DEVELOPMENT ENGINEERING DIVISION DATE

GLW GUTSCHICK LITTLE & WEBER, P.A.
CIVIL ENGINEERS, LAND SURVEYORS, LAND PLANNERS, LANDSCAPE ARCHITECTS
3909 NATIONAL DRIVE - SUITE 250 - BURTONSVILLE OFFICE PARK
BURTONSVILLE, MARYLAND 20866
TEL: 301-421-4024 BALT: 410-880-1820 DC/VA: 301-989-2524 FAX: 301-421-4186



DES: MBT				
DRN: KLP				
CHK: mbt/klg				
DEC: 2004				
BY	NO	REVISION	DATE	

WATER and SEWER EXTENSION
PLAN
600' SCALE MAP NO. 46 BLOCK NO. 4

MAPLE LAWN FARMS
BUSINESS DISTRICT
PARCEL C-9
HOWARD COUNTY, MARYLAND
ELECTION DISTRICT No. 5
CONTRACT No. 24-4243-D

SCALE
AS
SHOWN
SHEET
3 OF 3