

CONTRACT No. 24-4238-D

MAPLE LAWN FARMS HILLSIDE DISTRICT - AREA 1

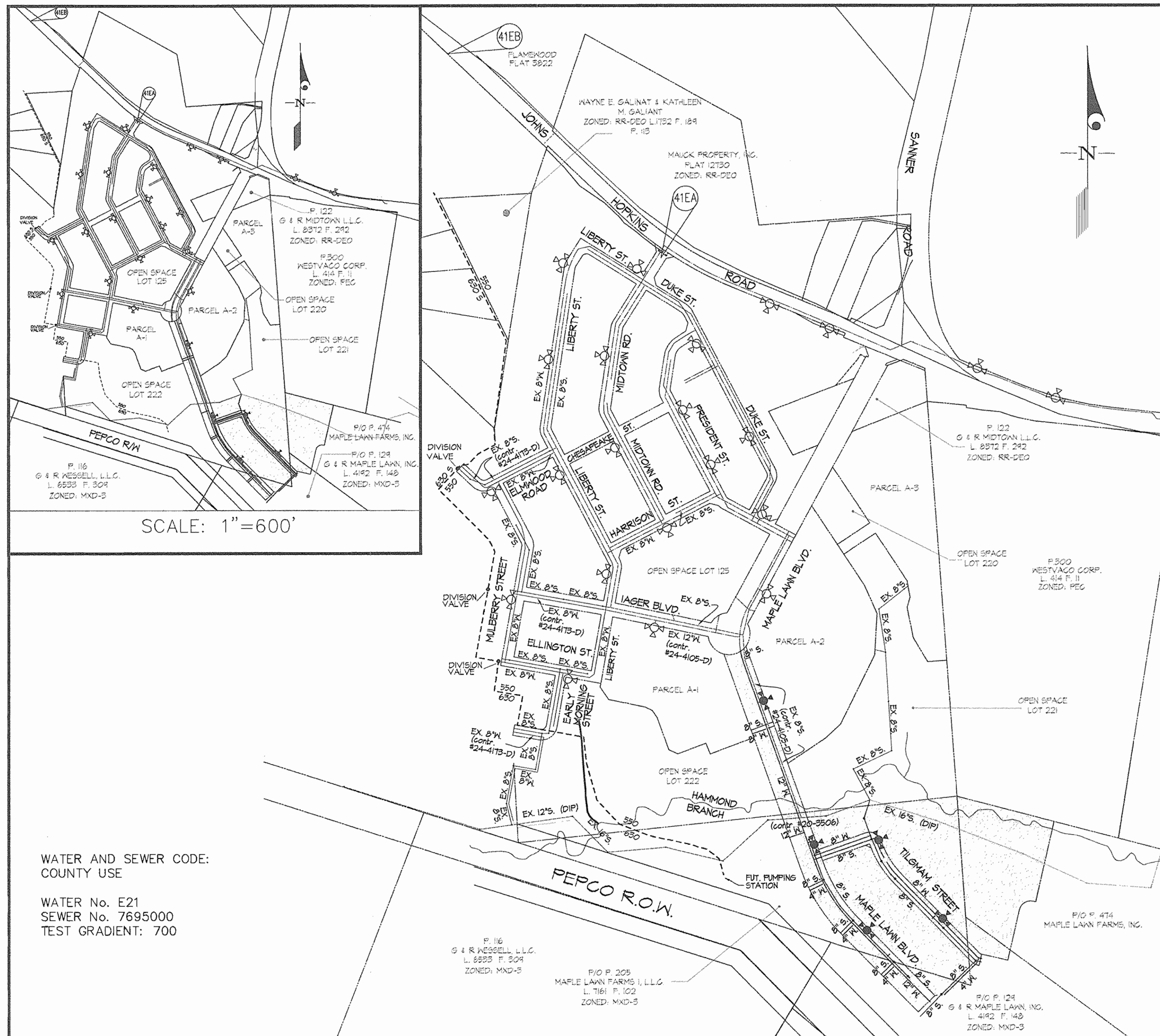
LOTS 1 THROUGH 59, OPEN SPACE LOT 60, COMMON
OPEN SPACE LOTS 61 & 62, PARCELS 'F' & 'G'
HOWARD COUNTY, MARYLAND
DEPARTMENT OF PUBLIC WORKS

TYPE OF BUILDING	SINGLE FAMILY ATTACHED
NUMBER OF UNITS	59
NUMBER OF S.H.C.'s	74
NUMBER OF W.H.C.'s	74
DRAINAGE AREA	LITTLE PATUXENT
TREATMENT PLANT	LITTLE PATUXENT WWTP

ITEMS	QUANTITIES ESTIMATED	AS-BUILT		
		QUANTITIES	TYPE	MANUFACTURER/SUPPLIER
4" WATER	411 LF	331 L.F.	D.I.P.	GRIFFIN PIPE PRODUCTS
6" WATER (FHs)	100 LF	95 L.F.	"	"
8" WATER	1047 LF	1150 L.F.	"	"
12" WATER	1811 LF	1789 L.F.	"	"
1/2" W/C	1350 LF	1087 L.F.	COPPER	HOWELL METAL/HUGHES
12" VALVE	3 EA.	3 EA.		KENNEDY/HUGHES
12" CAP	2 EA.	3 EA.		TYLER/HUGHES SUPPLY
12" x 8" CROSS	1 EA.	1 EA.		"
12" x 8" T	1 EA.	1 EA.		"
12" x 4" T	5 EA.	3 EA.		"
12" x 12" T	1 EA.	1 EA.		"
12" x 6" T (FHT)	3 EA.	3 EA.		"
8" 1/8" HB	2 EA.	2 EA.	D.I.P.	TYLER/HUGHES SUPPLY
8" 1/8" HB	1 EA.	1 EA.	"	"
8" 1/2" HB	1 EA.	DELETED		
8" x 6" T (FHT)	3 EA.	3 EA.		"
8" x 4" T	1 EA.	1 EA.		"
8" VALVE	4 EA.	3 EA.		KENNEDY/HUGHES SUPPLY
8" CAP	3 EA.	3 EA.		TYLER/HUGHES SUPPLY
6" VALVE	1 EA.	0 EA.		KENNEDY/HUGHES SUPPLY
4" 1/8" HB	1 EA.	1 EA.	D.I.P.	
4" VALVE	4 EA.	4 EA.		KENNEDY/HUGHES SUPPLY
4" CAP	4 EA.	4 EA.		TYLER/HUGHES SUPPLY
FIRE HYDRANT - 4.5'	1 EA.	1 EA.	C-502	KENNEDY/HUGHES SUPPLY
FIRE HYDRANT - 5.0'	1 EA.	1 EA.	"	"
FIRE HYDRANT - 5.5'	1 EA.	1 EA.	"	"
FIRE HYDRANT - 6.0'	1 EA.	1 EA.	"	"
FIRE HYDRANT - 7.0'	1 EA.	1 EA.	"	"
FIRE HYDRANT - 8.0'	1 EA.	1 EA.	"	"
8" D.I.P. SEWER	340 LF	200 L.F.	D.I.P.	GRIFFIN PIPE PRODUCTS
8" PVC SEWER	2162 LF	2190 L.F.	SDR 35	J.M. MANUFACTURING
4" PVC (SHC)	1891 LF	1495 L.F.	SDR 35	DIAMOND PLASTIC
MHs	14 EA.	14 EA.	CONCRETE	CONTRACTORS PRECAST
8" STOPPER	8 EA.	8 EA.	SDR 35 CAP	HARCO/HUGHES SUPPLY

NAME OF UTILITY CONTRACTOR:

SURVEY AND CHECKBOX:
DRAFTING DIV. AS-BUILT DATE: JAN '07



WATER AND SEWER CODE:
COUNTY USE

WATER No. E21
SEWER No. 7695000
TEST GRADIENT: 700

VICINITY MAP
SCALE: 1" = 300'

GENERAL NOTES

PART I

- APPROXIMATE LOCATIONS OF EXISTING MAINS ARE SHOWN. THE CONTRACTOR SHALL TAKE ALL NECESSARY PRECAUTIONS TO PROTECT EXISTING MAINS AND SERVICES AND MAINTAIN UNINTERRUPTED SERVICE. ANY DAMAGE INCURRED SHALL BE REPAIRED IMMEDIATELY TO THE SATISFACTION OF THE ENGINEER AT THE CONTRACTOR'S EXPENSE.
- TOPOGRAPHY INDICATED WAS TAKEN FROM AERIAL TOPOGRAPHY PREPARED DURING MARCH 1991 BY 3D1.
- HORIZONTAL AND VERTICAL SURVEY CONTROLS. THE COORDINATES SHOWN ON THE DRAWINGS ARE BASED ON MARYLAND STATE REFERENCE SYSTEM NAD 83/91 AS PROJECTED BY HOWARD COUNTY GEODETIC CONTROL STATIONS No. 46B2, No. 41EA, AND No. 41EB. ALL VERTICAL CONTROLS ARE BASED ON NAVD 88. VERTICAL CONTROLS PROVIDED ON DRAWINGS ARE STANDARD DISCS ON CONCRETE MONUMENTS.
- ALL PIPE ELEVATIONS SHOWN ARE INVERT ELEVATIONS UNLESS OTHERWISE NOTED ON THE PLANS.
- CLEAR ALL UTILITIES BY A MINIMUM OF 12 INCHES. CLEAR ALL POLES BY 5'-0" MINIMUM OR TUNNEL AS REQUIRED UNLESS OTHERWISE NOTED. THE OWNER HAS CONTACTED THE UTILITY COMPANIES AND HAS MADE ARRANGEMENTS FOR BRACING OF POLES AS SHOWN ON THE DRAWINGS. IN THE EVENT THE CONTRACTOR'S WORK REQUIRES BRACING OF ADDITIONAL POLES, ANY COST INCURRED BY THE OWNER FOR THE BRACING OF ADDITIONAL POLES OR DAMAGES SHALL BE DEDUCTED FROM MONIES OWED THE CONTRACTOR. THE CONTRACTOR SHALL COORDINATE WITH THE UTILITY COMPANIES TO SCHEDULE THE BRACING OF THE POLES.
- FOR DETAILS NOT SHOWN ON THE DRAWING, AND FOR MATERIALS AND CONSTRUCTION METHODS, USE HOWARD COUNTY DESIGN MANUAL, VOLUME IV, STANDARD SPECIFICATIONS AND DETAILS FOR CONSTRUCTION (LATEST EDITION). THE CONTRACTOR SHALL HAVE A COPY OF VOLUME IV ON THE JOB.
- WHERE TEST PITS HAVE BEEN MADE ON EXISTING UTILITIES, THEY ARE NOTED BY THE SYMBOL (X) AT THE LOCATIONS OF THE TEST PITS. A NOTE OR NOTES CONTAINING THE RESULTS OF THE TEST PIT OR PITS IS INCLUDED ON THE DRAWINGS. EXISTING UTILITIES IN THE VICINITY OF THE PROPOSED WORK FOR WHICH TEST PITS HAVE NOT BEEN DUG SHALL BE LOCATED BY THE CONTRACTOR TWO WEEKS IN ADVANCE OF CONSTRUCTION OPERATIONS AT HIS OWN EXPENSE.
- THE CONTRACTOR SHALL NOTIFY THE FOLLOWING UTILITY COMPANIES OR AGENCIES AT LEAST FIVE WORKING DAYS BEFORE STARTING WORK ON THESE PLANS:

AT&T	1-800-252-1133
BGE (CONTRACTOR SERVICES)	410-850-4620
BGE (UNDER GROUND DAMAGE CONTROL)	410-685-1400
BUREAU OF UTILITIES	410-313-4900
COLONIAL PIPELINE CO.	410-745-1340
MISS UTILITY	1-800-251-7777
STATE HIGHWAY ADMINISTRATION	410-531-5533
VERIZON	1-800-745-0033 / 410-224-4210

- TREES AND SHRUBS ARE TO BE PROTECTED FROM DAMAGE TO THE MAXIMUM EXTENT. TREES AND SHRUBS LOCATED WITHIN THE CONSTRUCTION AREA STRIP ARE NOT TO BE REMOVED OR DAMAGED BY THE CONTRACTOR.
- THE CONTRACTOR SHALL REMOVE TREES, STUMPS AND ROOTS ALONG THE LINE OF EXCAVATION. PAYMENT FOR SUCH REMOVAL SHALL BE INCLUDED IN THE UNIT PRICE BID FOR CONSTRUCTION OF THE MAIN.
- THE CONTRACTOR SHALL NOTIFY THE BUREAU OF HIGHWAYS, HOWARD COUNTY, AT (410)-313-7450 AT LEAST FIVE WORKING DAYS BEFORE OPEN CUTTING OR BORING/JACKING OF ANY COUNTY ROAD FOR LAYING WATER/SEWER MAINS OR HOUSE CONNECTIONS. THE APPROVAL OF THESE DRAWINGS WILL CONSTITUTE COMPLIANCE WITH DPM REQUIREMENTS PER SECTION 18.114(a) OF THE HOWARD COUNTY CODE.
- ALL BUILDABLE LOTS SHOWN HEREON SHALL HAVE ONE (1) FOOT WIDE PUBLIC EASEMENT ADJACENT TO THE PUBLIC ROAD RIGHT OF WAY, FOR THE PURPOSE OF SIDEWALK MAINTENANCE, WATER HOUSE CONNECTION AND SEWER HOUSE CONNECTION.

PART II - WATER

- ALL MAINS SHALL BE D.I.P. CLASS 52 UNLESS OTHERWISE NOTED.
- TOPS OF ALL WATER MAINS SHALL HAVE A MINIMUM OF 8'-6" OF COVER UNLESS OTHERWISE NOTED.
- VALVES ADJACENT TO TEES SHALL BE STRAPPED TO TEES.
- ALL FITTINGS SHALL BE BUTTRESSED OR ANCHORED WITH CONCRETE IN ACCORDANCE WITH STANDARD DETAILS UNLESS OTHERWISE PROVIDED FOR ON THE DRAWINGS.
- FIRE HYDRANTS SHALL BE SET TO THE BURY LINE ELEVATIONS SHOWN ON THE DRAWINGS. ALL FIRE HYDRANTS SHALL BE INSTALLED IN ACCORDANCE WITH STANDARD DETAILS. THE SOIL AROUND THE FIRE HYDRANT SHALL BE COMPACTED IN ACCORDANCE WITH SECTION 1000 AND SECTION 1005 OF THE STANDARD SPECIFICATIONS.
- THE CONTRACTOR SHALL NOT OPERATE ANY WATER MAIN VALVES ON THE EXISTING WATER SYSTEM.

PART III - SEWER

- ALL SEWER MAINS SHALL BE D.I.P. OR P.V.C. UNLESS OTHERWISE NOTED.
- ALL MANHOLES SHALL BE 4'-0" INSIDE DIAMETER UNLESS OTHERWISE NOTED.
- FORCE MAINS SHALL BE D.I.P. ONLY.
- MANHOLES SHOWN WITH THE 12" AND 16" WALLS ARE FOR BRICK MANHOLES ONLY.
- MANHOLES DESIGNATED "M.T." IN PLAN AND PROFILE SHALL HAVE WATERTIGHT FRAME AND COVER. STANDARD DETAIL 05.52. WHERE WATERTIGHT MANHOLE FRAMES AND COVERS ARE USED, SET TOP OF FRAME 1'-6" ABOVE FINISHED GRADE UNLESS OTHERWISE NOTED ON THE DRAWINGS.
- HOUSE(S) WITH THE SYMBOL "C.N.S." INDICATES THE CELLAR CANNOT BE SERVED.

AS BUILT

DATE: JANUARY 2007

GLW FILE #04001
04001aWS1.dwg

SEDIMENT CONTROL MEASURES WILL BE IMPLEMENTED IN ACCORDANCE WITH SECTION 214 OF THE SPECIFICATIONS, WITH ROAD DRAWINGS PLAN F-05-D1, DRAWINGS 9 THRU 13 FOR SEDIMENT & EROSION CONTROL, AND WITH THESE PLANS.

REVIEWED FOR HOWARD SOIL CONSERVATION DISTRICT AND MEETS TECHNICAL REQUIREMENT.
John K. Robertson 1/24/06
SIGNATURE DATE
U.S.D.A. NATURAL RESOURCES CONSERVATION SERVICE

THIS DEVELOPMENT PLAN IS APPROVED FOR SOIL EROSION AND SEDIMENT CONTROL BY THE HOWARD SOIL CONSERVATION DISTRICT.

APPROVED: *John K. Robertson* 1/24/06
HOWARD S.C.D. DATE

OWNER
G & R MAPLE LAWN LLC
SUITE 410 WOODHOLME CENTER
1824 REISTERSTOWN ROAD
BALTIMORE, MD 21208
ATTN: CHARLIE O'DONOVAN
410-484-8400

DEPARTMENT OF PUBLIC WORKS
HOWARD COUNTY, MARYLAND

DEPARTMENT OF PLANNING AND ZONING
HOWARD COUNTY, MARYLAND

GLW GUTSCHICK LITTLE & WEBER, P.A.

CIVIL ENGINEERS, LAND SURVEYORS, LAND PLANNERS, LANDSCAPE ARCHITECTS
3009 NATIONAL DRIVE - SUITE 250 - BURTNSVILLE OFFICE PARK
BURTNSVILLE, MARYLAND 20866
TEL: 301-421-4024 BALT: 410-991-1820 DC/VA: 301-989-2524 FAX: 301-421-4156



DES: AWL	This plan supersedes plan signed on 6/14/05.	12/21/05
DRN: AWL	rev. qty.	10/20/06
CHK: DEV		
DATE: 12/05	BY NO	REVISION

TITLE SHEET
SCALE: AS SHOWN

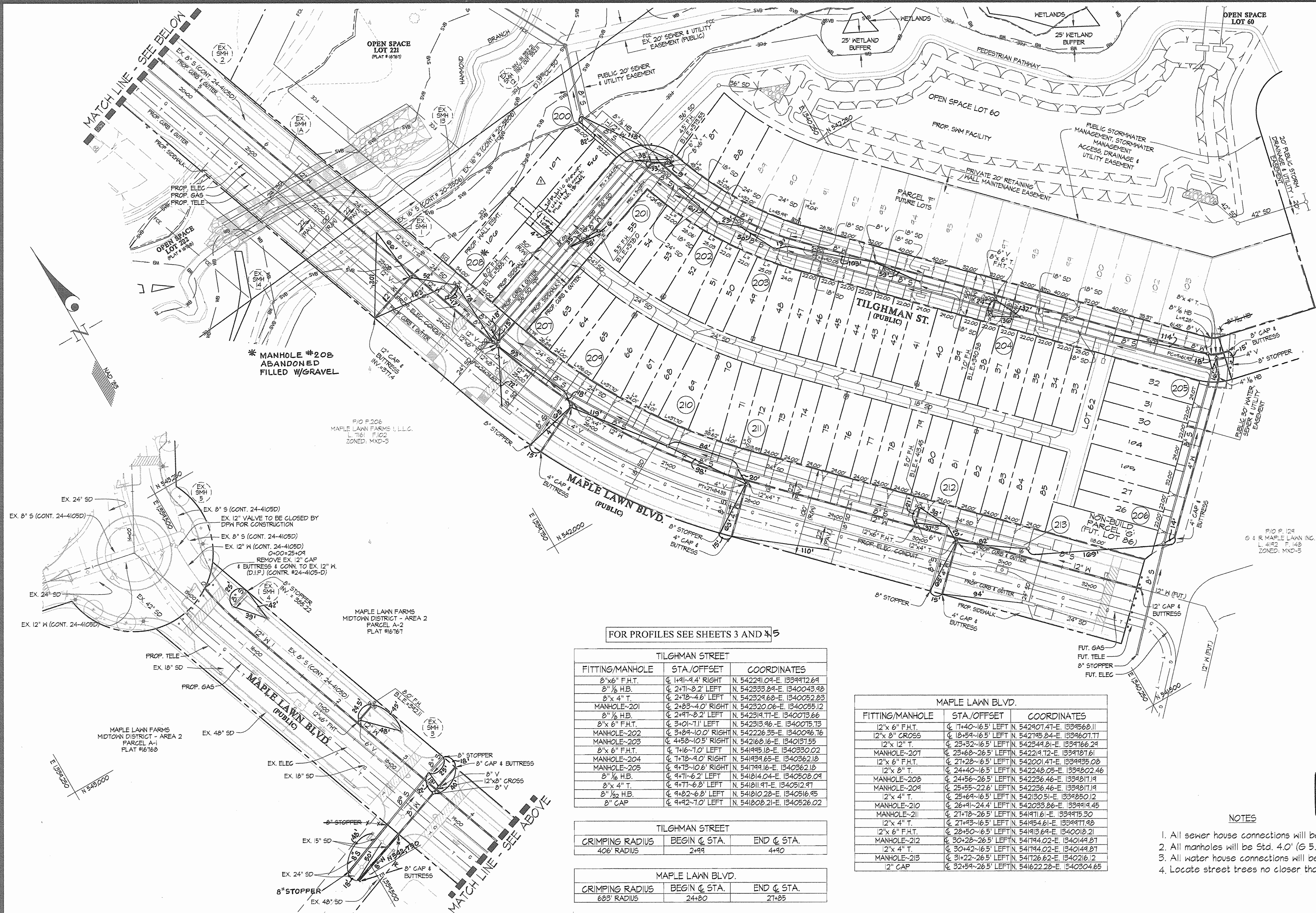
600' SCALE MAP NO. 46 BLOCK NO. 4

MAPLE LAWN FARMS
CONTRACT No. 24-4238-D

HILLSIDE DISTRICT - AREA 1
LOTS 1 THROUGH 59, OPEN SPACE LOT 60, COMMON
OPEN SPACE LOTS 61 & 62, AND PARCELS 'F' & 'G'
HOWARD COUNTY, MARYLAND
ELECTION DISTRICT No. 5

SCALE AS SHOWN

SHEET 1 OF 5



MINIMUM CELLAR ELEVATIONS		INV. @ R/W ELEV.
LOT NO.	ELEV.	
100	380.33	375.83
2	373.88	364.38
63 (5)	374.44	364.94
64 (4)	384.60	380.10
65 (5)	385.44	381.44
66 (6)	387.48	382.98
67 (7)	390.25	385.75
68 (8)	390.64	386.14
69 (9)	393.04	388.54
70 (10)	395.85	391.35
71 (11)	396.24	391.74
72 (2)	397.45	392.95
73 (13)	398.72	394.22
74 (14)	399.83	395.33
75 (15)	400.51	396.01
76 (16)	400.86	396.36
77 (17)	402.64	398.14
78 (18)	403.13	398.63
79 (19)	404.46	399.96
80 (20)	404.74	400.24
81 (21)	406.04	401.54
82 (22)	406.60	402.10
83 (23)	394.42	394.42
84 (24)	394.70	394.70
85 (25)	404.25	404.25
PAR 5	408.50	404.00
26	406.47	401.97
27	406.02	401.52
105	402.96	398.46
104	402.51	398.01
30	394.65	395.15
31	394.11	394.61
32	396.21	391.71
33	381.88	384.08
34	386.03	382.23
35	385.23	381.43
36	383.83	380.03
37	383.03	379.23
38	381.48	377.68
39	381.08	377.28
40	379.58	375.78
41	378.18	374.38
42	376.68	372.88
43	375.88	372.08
44	374.48	370.68
45	373.83	369.83
46	372.63	368.63
47	371.18	367.18
48	370.23	366.23
49	368.84	364.84
50	368.68	364.68
51	368.06	364.06
52	365.61	361.61
53	362.21	358.21
54	366.64	362.84
55	366.20	362.40
56	362.73	358.93
107	361.00	357.20
87 (58)	367.64	363.14
88 (59)	368.25	363.75
89 (63)	368.98	364.48
90 (64)	364.60	365.10
91 (65)	372.24	367.74
92 (66)	373.84	369.34
93 (67)	375.34	370.84
94 (68)	376.84	372.34
95 (69)	378.34	373.84
96 (70)	380.84	376.34
97 (71)	383.34	378.84
98 (72)	385.84	381.34
99 (73)	386.64	382.14
100 (74)	388.14	383.64
101 (75)	389.74	385.24
102 (76)	391.04	386.54
103 (77)	392.14	387.64

1. Lot numbers within parenthesis indicate lot numbers used on plans signed 6/20/05.
 2. Lot numbers 60, 61, and 62 are open space lots.

AS BUILT
 DATE: JANUARY 2007

NOTES

- All sewer house connections will be 4".
- All manholes will be Std. 4.0' (G 5.12).
- All water house connections will be placed at the high end of each lot.
- Locate street trees no closer than 5' from any MHC or SHC.

FOR PROFILES SEE SHEETS 3 AND 4

TILGHMAN STREET		
FITTING/MANHOLE	STA/OFFSET	COORDINATES
8" x 6" F.H.T.	± 141'-4.4' RIGHT	N. 542241.09-E. 1339472.64
8" x 1/2 H.B.	± 211'-8.2' LEFT	N. 542333.84-E. 1340043.98
8" x 4" T.	± 218'-4.6' LEFT	N. 542329.68-E. 1340052.83
MANHOLE-201	± 218'-4.0' RIGHT	N. 542320.06-E. 1340055.12
8" x 1/2 H.B.	± 249'-8.2' LEFT	N. 542319.71-E. 1340073.66
8" x 6" F.H.T.	± 310'-1.1' RIGHT	N. 542313.96-E. 1340073.13
MANHOLE-202	± 318'-10.0' RIGHT	N. 542226.33-E. 1340096.76
MANHOLE-203	± 4158'-10.5' RIGHT	N. 542141.16-E. 1340131.55
8" x 6" F.H.T.	± 716'-7.0' LEFT	N. 541945.18-E. 1340330.02
MANHOLE-204	± 718'-4.0' RIGHT	N. 541939.65-E. 1340362.18
MANHOLE-205	± 9173'-10.6' RIGHT	N. 541799.16-E. 1340362.18
8" x 1/2 H.B.	± 9171'-6.2' LEFT	N. 541814.04-E. 1340508.04
8" x 4" T.	± 9177'-6.8' LEFT	N. 541811.91-E. 1340512.97
8" x 1/2 H.B.	± 9182'-6.8' LEFT	N. 541810.28-E. 1340516.93
8" CAP	± 9182'-7.0' LEFT	N. 541808.21-E. 1340526.02

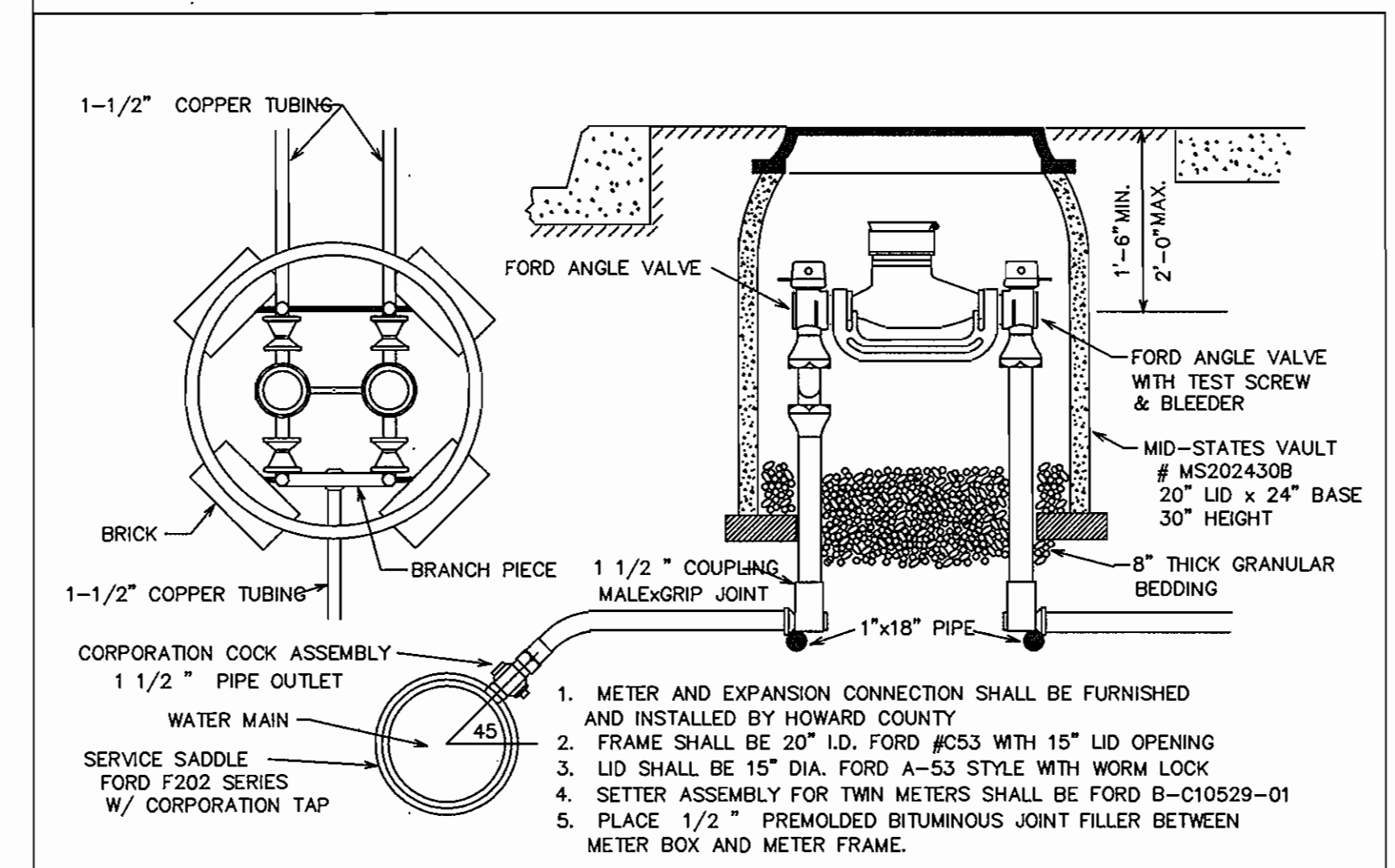
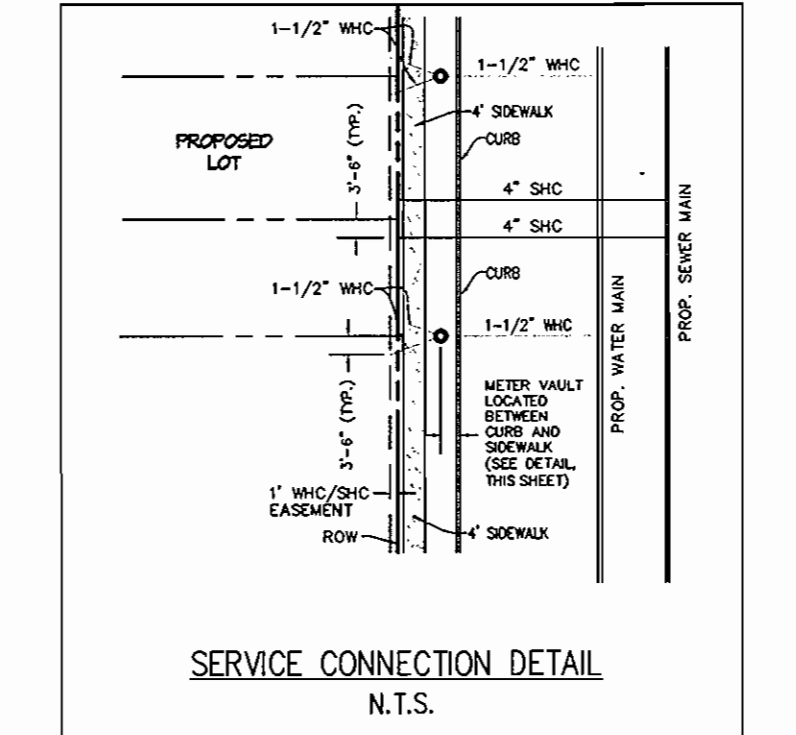
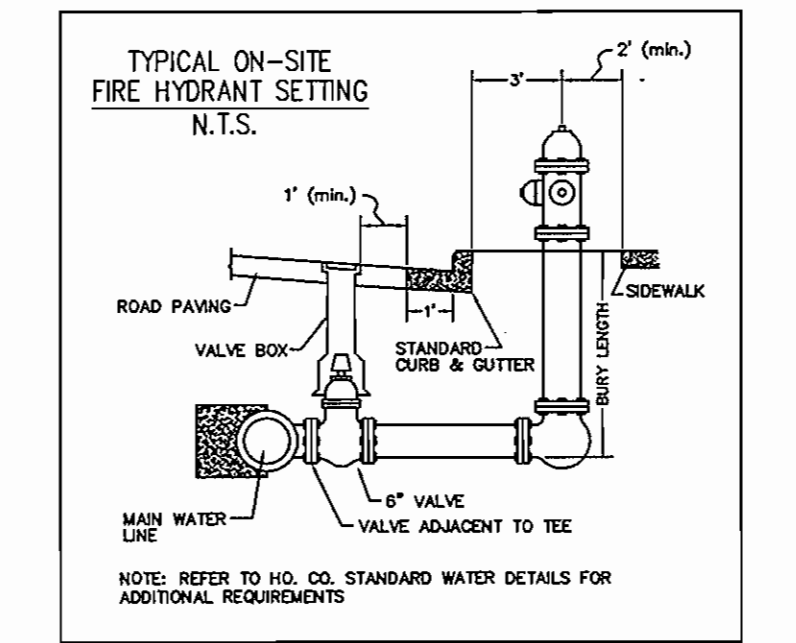
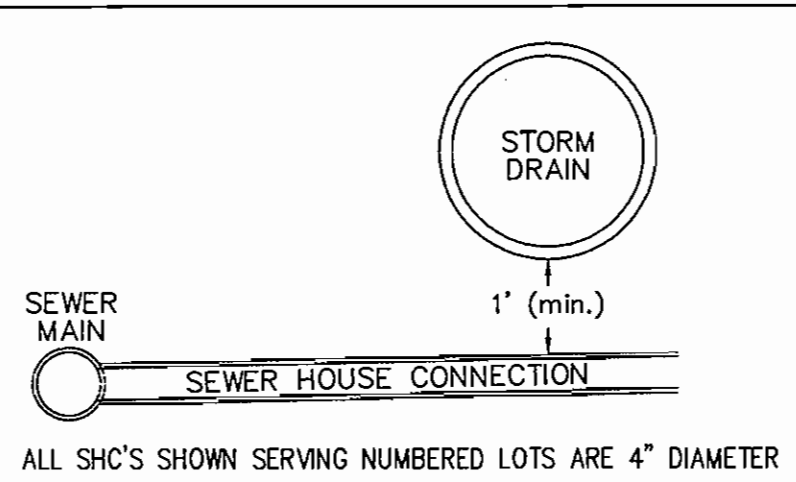
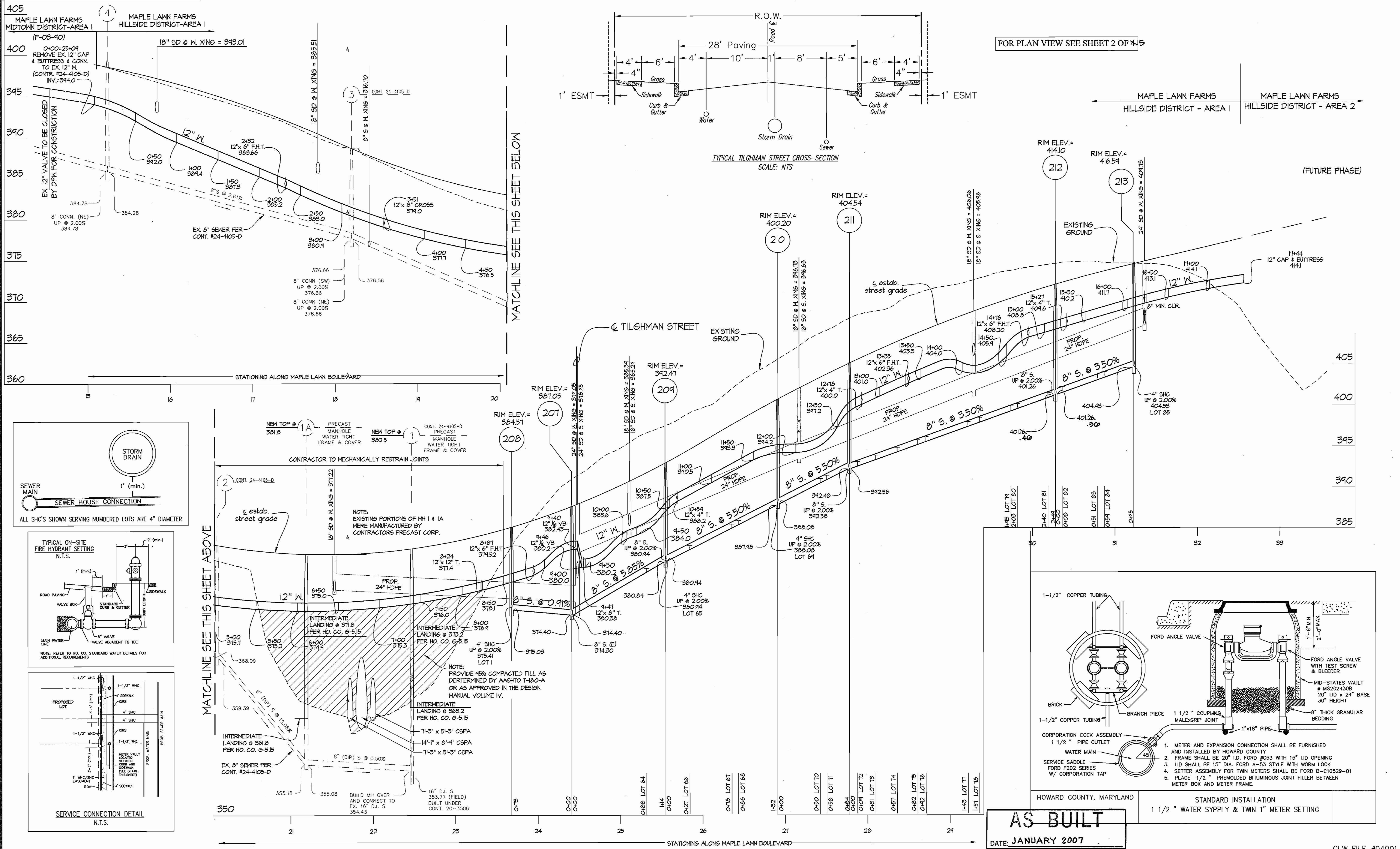
TILGHMAN STREET		
CRIMPING RADIUS	BEGIN ± STA.	END ± STA.
406' RADIUS	2499	4490

MAPLE LAWN BLVD.		
CRIMPING RADIUS	BEGIN ± STA.	END ± STA.
683' RADIUS	2480	2785

MAPLE LAWN BLVD.		
FITTING/MANHOLE	STA/OFFSET	COORDINATES
12" x 6" F.H.T.	± 1740'-16.5' LEFT	N. 542907.47-E. 1334568.11
12" x 8" CROSS	± 1819'-16.5' LEFT	N. 542795.84-E. 1334601.77
12" x 12" T.	± 2313'-16.5' LEFT	N. 542349.81-E. 1334766.24
MANHOLE-207	± 2318'-26.5' LEFT	N. 542219.12-E. 1334787.61
12" x 6" F.H.T.	± 27128'-16.5' LEFT	N. 542201.47-E. 1334935.08
12" x 8" T.	± 2440'-16.5' LEFT	N. 542248.05-E. 1334802.46
MANHOLE-208	± 2445'-26.5' LEFT	N. 542236.46-E. 1334811.19
MANHOLE-209	± 25155'-22.6' LEFT	N. 542236.46-E. 1334811.19
12" x 4" T.	± 25169'-16.5' LEFT	N. 542130.51-E. 1334850.12
MANHOLE-210	± 26191'-24.4' LEFT	N. 542033.86-E. 1334919.45
MANHOLE-211	± 27118'-26.5' LEFT	N. 541971.61-E. 1334975.30
12" x 4" T.	± 27143'-16.5' LEFT	N. 541954.61-E. 1334977.98
12" x 6" F.H.T.	± 28150'-16.5' LEFT	N. 541913.64-E. 1340018.21
MANHOLE-212	± 30128'-26.5' LEFT	N. 541944.02-E. 1340144.87
12" x 4" T.	± 30142'-16.5' LEFT	N. 541944.02-E. 1340144.87
MANHOLE-213	± 31122'-26.5' LEFT	N. 541726.62-E. 1340216.12
12" CAP	± 32154'-26.5' LEFT	N. 541622.28-E. 1340304.65

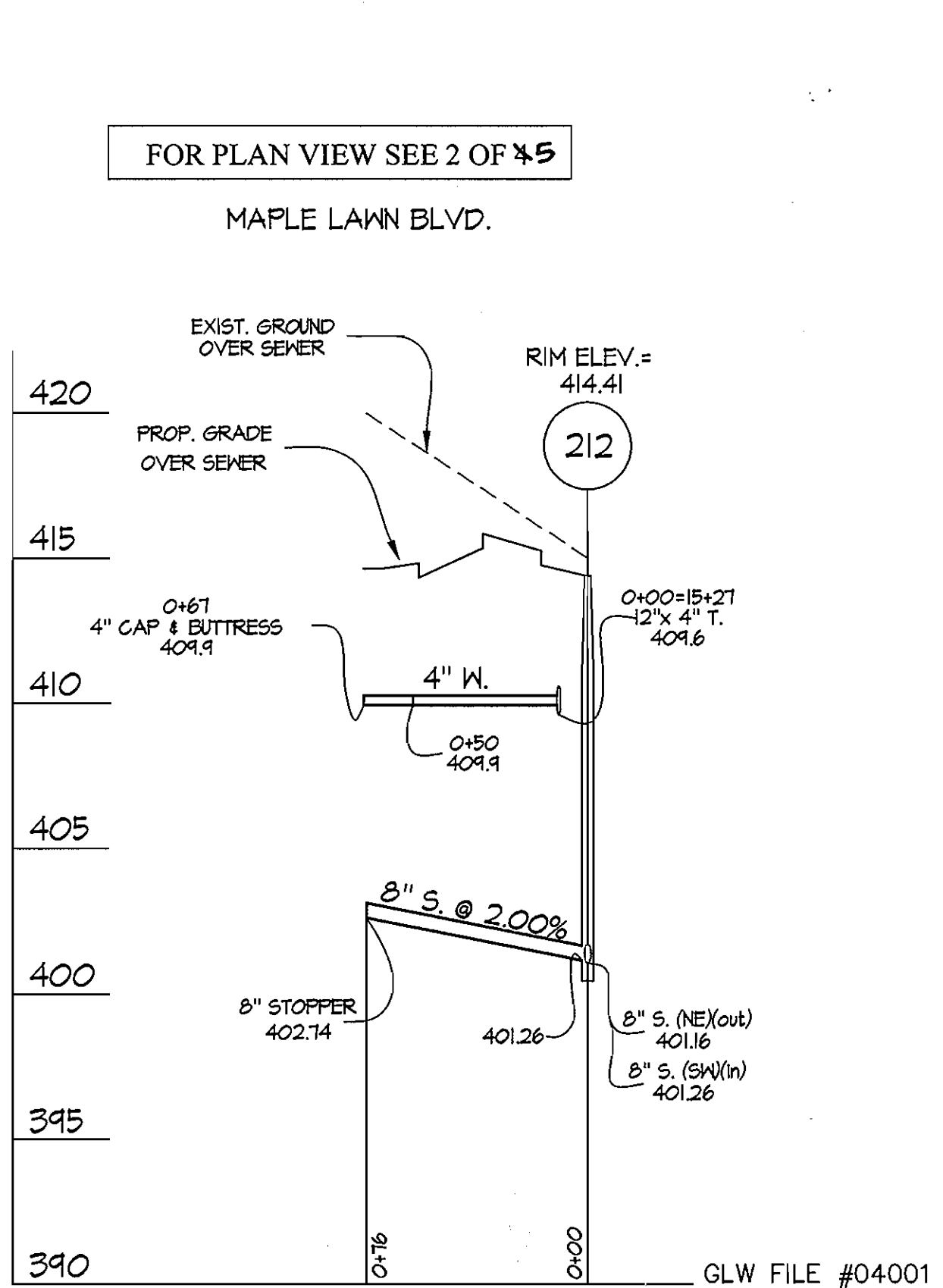
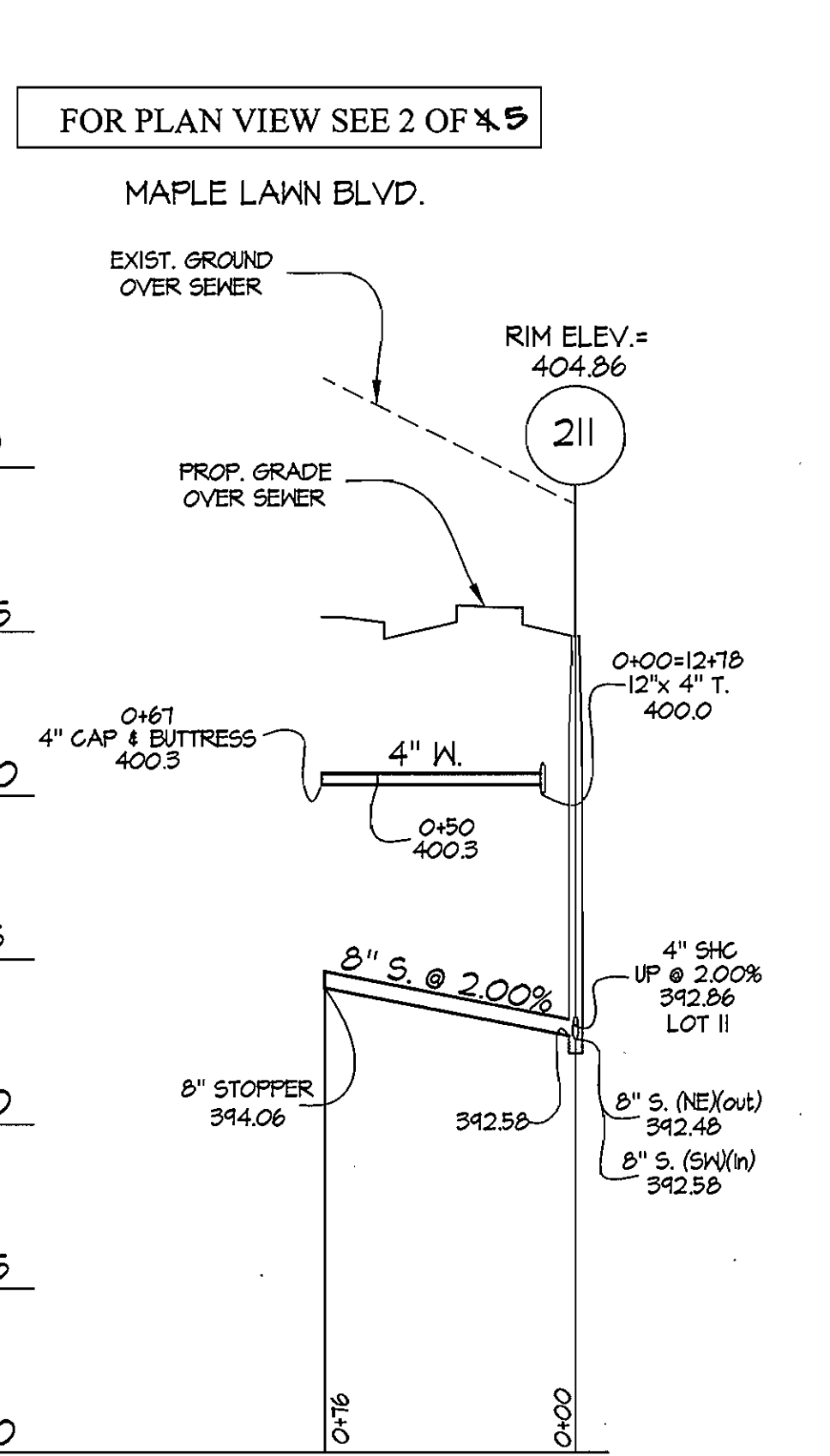
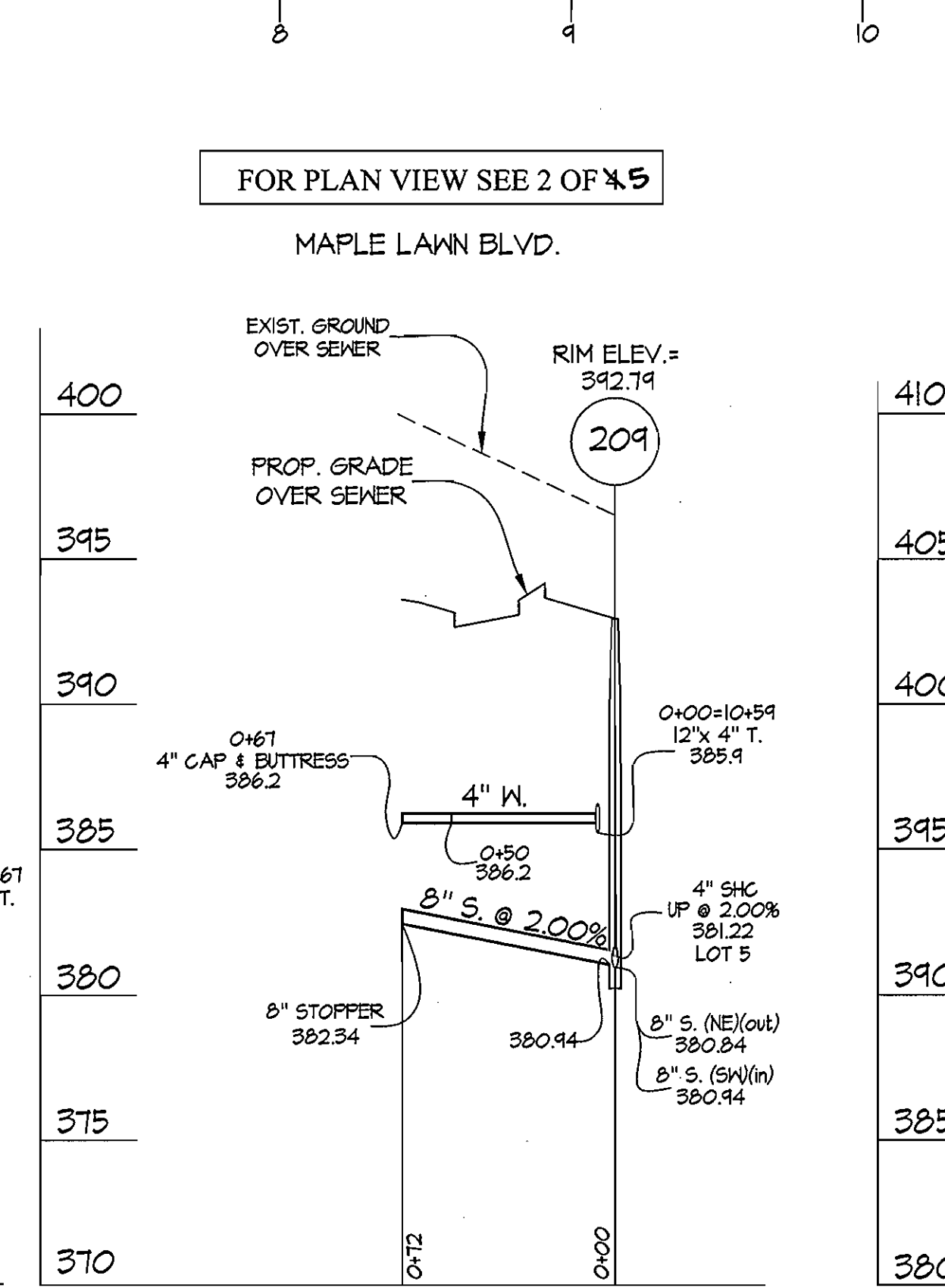
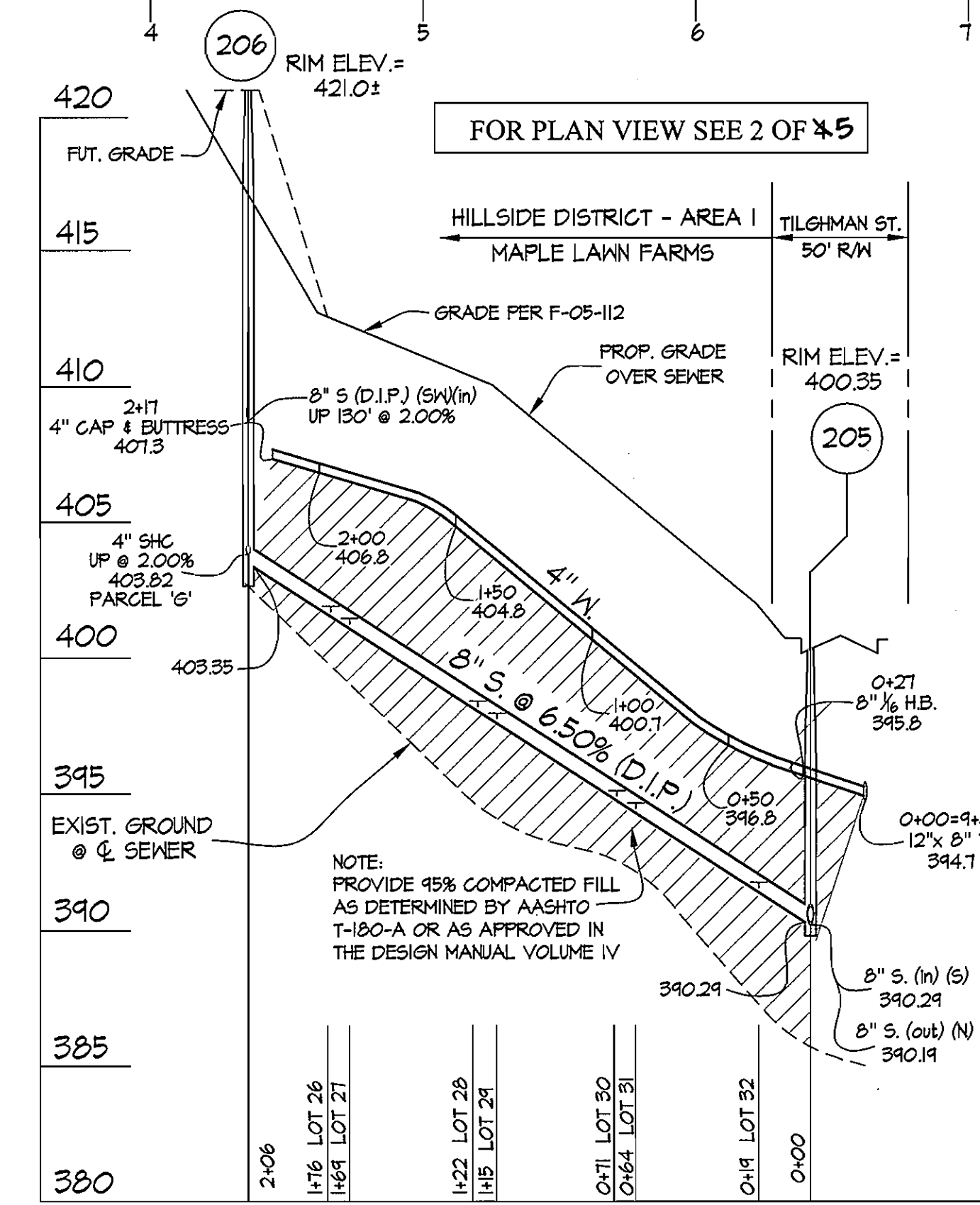
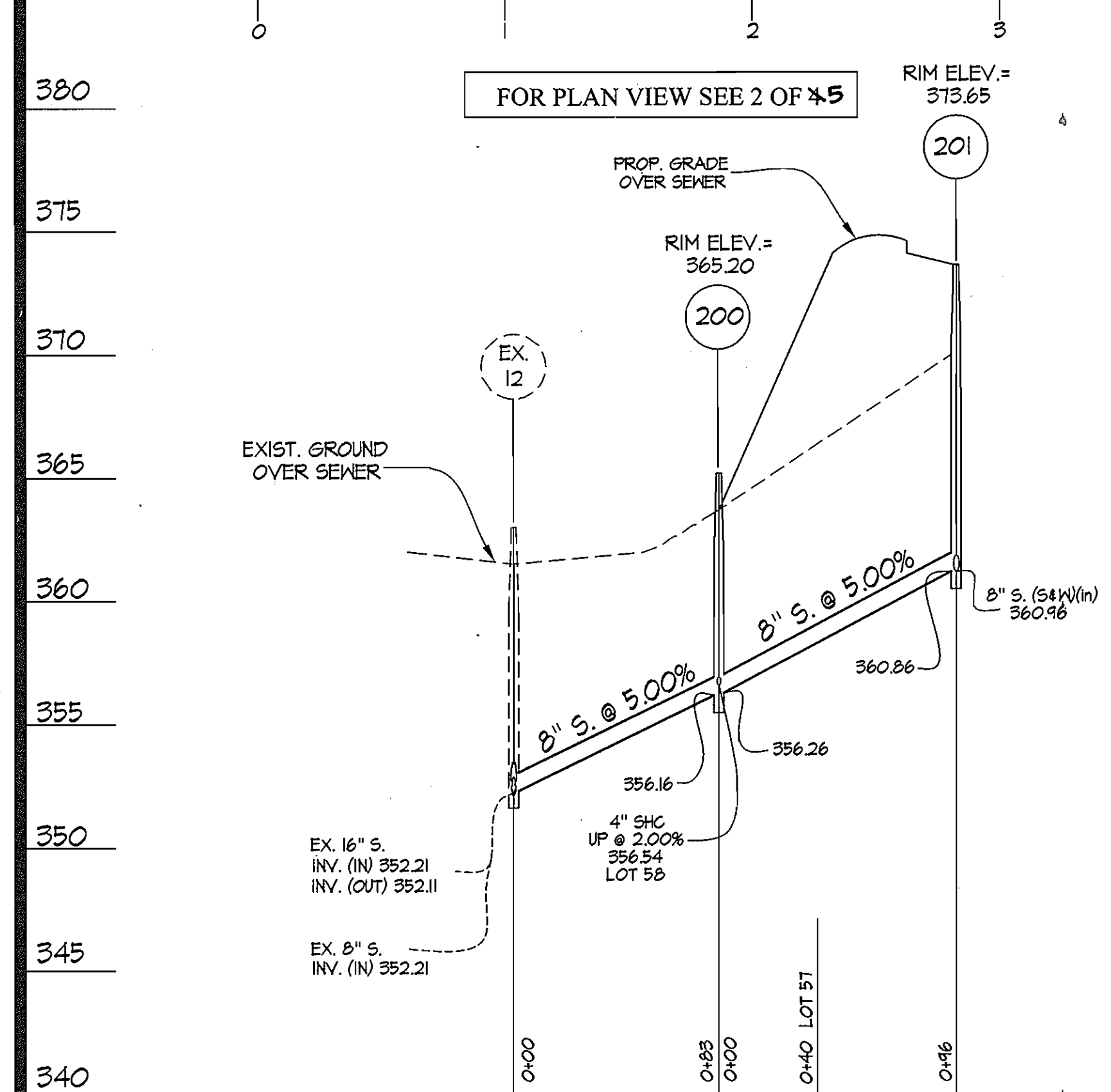
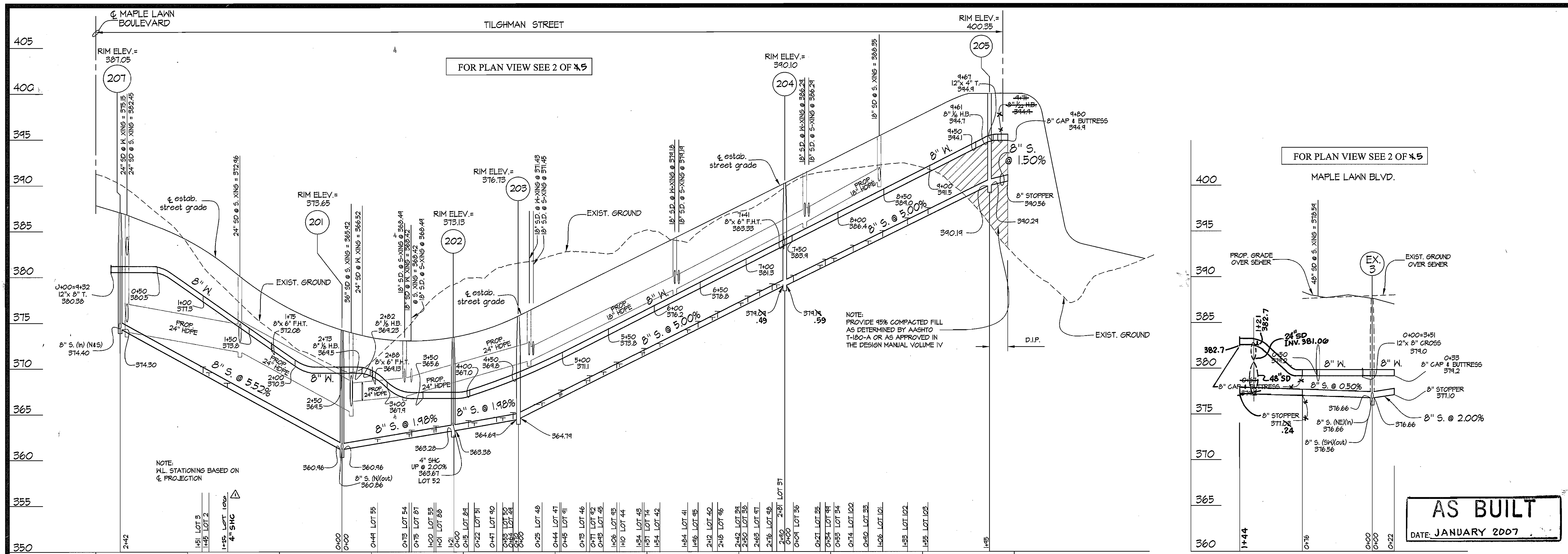
C:\GARD\DRAWINGS\04001\04001A\WS\04001A\WS2.dwg 12/12/05 11:59:26 AM EST

DEPARTMENT OF PUBLIC WORKS HOWARD COUNTY, MARYLAND R. B. B... CHIEF, BUREAU OF UTILITIES	DEPARTMENT OF PLANNING AND ZONING HOWARD COUNTY, MARYLAND ... CHIEF, DEVELOPMENT ENGINEERING DIVISION	GLWGUTSCHICK LITTLE & WEBER, P.A. CIVIL ENGINEERS, LAND SURVEYORS, LAND PLANNERS, LANDSCAPE ARCHITECTS 3909 NATIONAL DRIVE - SUITE 250 - BURTONSVILLE OFFICE PARK BURTONSVILLE, MARYLAND 20866 TEL: 301-421-4024 FAX: 301-421-4186	DES: AML DRN: AML CHK: DEV DATE: 12/05	This plan supercedes plan signed on 6/14/05 added one lot to lot 100 & renumbered lot 100 & added easement in lot 108 12/2/05 10/20/05	WATER and SEWER EXTENSION PLAN 60' SCALE MAP NO. 46 BLOCK NO. 4	MAPLE LAWN FARMS CONTRACT No. 24-4238-D HILLSIDE DISTRICT - AREA 1 LOTS 1 THROUGH 59, OPEN SPACE LOT 60, COMMON OPEN SPACE LOTS 61 & 62, AND PARCELS F' & G' HOWARD COUNTY, MARYLAND ELECTION DISTRICT No. 5	SCALE 1"=50' SHEET 2 OF 5
---	--	---	---	---	---	---	------------------------------



L:\CADD\DRAWINGS\04001\04001A\WS\04001aWS3.DWG 12/22/2005 11:40:45 AM EST

DEPARTMENT OF PUBLIC WORKS HOWARD COUNTY, MARYLAND <i>R. L. ...</i> CHIEF, BUREAU OF UTILITIES DATE: 1-4-06	DEPARTMENT OF PLANNING AND ZONING HOWARD COUNTY, MARYLAND <i>...</i> CHIEF, DEVELOPMENT ENGINEERING DIVISION DATE:	GLW GUTSCHICK LITTLE & WEBER, P.A. CIVIL ENGINEERS, LAND SURVEYORS, LAND PLANNERS, LANDSCAPE ARCHITECTS 3909 NATIONAL DRIVE - SUITE 250 - BURTONTOWN, MARYLAND 20866 TEL: 301-421-4024 BALT: 410-880-1820 DC/VA: 301-889-2524 FAX: 301-421-4186	DES: AWL DRN: AWL CHK: DEV DATE: 12/05	This plan supersedes plan signed on 6/14/05 12/21/05	WATER and SEWER EXTENSION PLAN 600' SCALE MAP NO. 46 BLOCK NO. 4	MAPLE LAWN FARMS CONTRACT No. 24-4238-D HILLSIDE DISTRICT - AREA 1 LOTS 1 THROUGH 59, OPEN SPACE LOT 60, COMMON OPEN SPACE LOTS 61 & 62, AND PARCELS 'F' & 'G' HOWARD COUNTY, MARYLAND ELECTION DISTRICT No. 5	SCALE AS SHOWN SHEET 3 OF 5
			BY NO REVISION DATE	600' SCALE MAP NO. 46 BLOCK NO. 4			



AS BUILT
DATE: JANUARY 2007

C:\CADD\DRAWINGS\04001\04001A\WS\04001a\WS1.dwg 12/22/2005 11:42:37 AM EST

DEPARTMENT OF PUBLIC WORKS HOWARD COUNTY, MARYLAND R. J. B... 1-4-06 CHIEF, BUREAU OF UTILITIES	DEPARTMENT OF PLANNING AND ZONING HOWARD COUNTY, MARYLAND M... 1/26/05 CHIEF, DEVELOPMENT ENGINEERING DIVISION	GLWGUTSCHICK LITTLE & WEBER, P.A. CIVIL ENGINEERS, LAND SURVEYORS, LAND PLANNERS, LANDSCAPE ARCHITECTS 3809 NATIONAL DRIVE - SUITE 250 - BIRTONVILLE OFFICE PARK BIRTONVILLE, MARYLAND 20866 TEL: 301-421-4024 BALI: 410-880-1820 DC/VA: 301-588-2524 FAX: 301-421-4186	DES: ANL DRN: ANL CHK: DEV DATE: 12/05	This plan supersedes plan signed 6/14/05 added SHC to serve lot 1000 12/21/05 1/1/2006	WATER and SEWER EXTENSION PLAN 600' SCALE MAP NO. 46 BLOCK NO. 4	MAPLE LAWN FARMS CONTRACT No. 24-4238-D HILLSIDE DISTRICT - AREA I LOTS 1 THROUGH 59, OPEN SPACE LOT 60, COMMON OPEN SPACE LOTS 61 & 62, AND PARCELS 'F' & 'G' HOWARD COUNTY, MARYLAND ELECTION DISTRICT No. 5	SCALE AS SHOWN SHEET 4 OF 5
			BY: NO REVISION:	DATE:			

UNIT #	LENGTH	TO	UNIT	LENGTH	TO
79 SHC	20.3'	FH			
	59'	SMH-212			
80/81					
WHC	10'	FH			
	32'	SMH-212			
80 SHC	14'	FH			
	51'	SMH-212			
81 SHC	30'	FH			
	27.5'	SMH-212			
82/83					
WHC	60'	FH			
	35'	SMH-212			
82 SHC	45.5'	FH			
	25'	SMH-212			
83 SHC	89'	FH			
	57.6'	SMH-212			
84/85					
WHC	77'	SMH-212			
	25.5'	SMH-213			
84 SHC	67'	SMH-212			
	45'	SMH-213			
85 SHC	99'	SMH-212			
	29.5'	SMH-213			

UNIT #	LENGTH	TO	UNIT	LENGTH	TO
30 SHC	13.5'	FH	67 SHC	85'	SMH-209
	70'	SDM-418		60'	SMH-210
37 SHC	27'	FH	68		
	42'	SDM-418	WHC	99.5'	SMH-209
34/35			SHC	39.5'	SMH-210
WHC	53'	FH		31.5'	SMH-209
	17'	SDM-418		58.5'	SMH-210
34 SHC	45'	FH	69/70		
	28'	SDM-418	WHC	22.5'	SMH-210
35 SHC	77'	FH		73'	SMH-211
	32'	SDM-418	69 SHC	29'	SMH-210
34/35				84.5'	SMH-211
WHC	104.5'	FH	70 SHC	59.5'	SMH-210
	50'	SDM-418		40'	SMH-211
34 SHC	83'	FH	71/72		
	35'	SDM-418	WHC	173'	SMH-211
1/2			71 SHC	32.3'	SMH-210
WHC	13.5'	FH		60'	SMH-210
	52'	SMH-207			
1 SHC	56'	SDM-412	73/74		
	85'	FH	WHC	43'	SMH-211
2 SHC	32.5'	SDM-412		87'	I-422
	112'	SMH-207	73 SHC	40'	SMH-211
63				94.5'	I-422
WHC	73.5'	FH	74 SHC	61.5'	SMH-211
	43.6'	SDM-412		71'	I-422
SHC	67'	FH	75/76		
	42'	SDM-412	WHC	100'	SMH-211
64				30'	I-422
WHC	21.5'	SMH-207	75 SHC	26.3'	SMH-211
	34.6'	SMH-209		47'	I-422
SHC	90'	SMH-207	76 SHC	113.2'	SMH-211
	40'	SMH-209		23'	I-422
65			77		
WHC	22.5'	SMH-209	WHC	131'	SMH-211
	22.5'	I-418		10.3'	I-422
SHC	31'	SMH-209	SHC	146'	SMH-211
	51.5'	I-418		24.5'	I-422
66/67			78/79		
WHC	87'	SMH-209	WHC	50'	I-422
	81'	SMH-210		77'	SMH-212
66 SHC	41'	SMH-209	78 SHC	55'	FH
	109.5'	SMH-210		93.5'	SMH-212

UNIT #	LENGTH	TO	UNIT	LENGTH	TO
WHC	20'	SMH-202	79/80		
89 SHC	90'	FH	WHC	9'	SMH-203
	31.5'	SMH-202		14'	SDM-416
88 SHC	69.5'	FH	49 SHC	19.5'	SMH-203
	40'	SMH-202		31'	SDM-416
87			48 SHC	32'	SMH-203
WHC	10'	FH		23'	SDM-416
	53.1'	SMH-201	47/48		
SHC	44.5'	FH	WHC	47'	SDM-416
	81'	SMH-201		50'	SMH-203
57			47 SHC	49'	SMH-203
WHC	59.5'	SDM-411		43.5'	SDM-416
	52'	SMH-201	46 SHC	76'	SMH-203
SHC	80'	SDM-411		68'	SDM-416
	72'	SMH-201	45		
58			WHC	25'	SMH-203
WHC	22.5'	SMH-201		76'	SDM-416
	33'	SDM-411	SHC	97'	SMH-203
SHC	51'	SDM-411		88'	SDM-416
	42.5'	SMH-201	44/43		
52			WHC	50'	SDM-417
WHC	44.5'	FH		113'	SDM-416
	30'	SMH-201	44 SHC	63'	SDM-417
SHC	42'	FH		105'	SDM-416
	380'	SMH-201	43 SHC	42'	SDM-417
64				128'	SDM-416
WHC	61'	FH	42/41		
	44'	SMH-202	WHC	15'	SDM-417
SHC	54'	SMH-202		95'	FH
	61.5'	FH	42 SHC	29'	SDM-417
83/82			41 SHC	29'	SDM-417
WHC	87'	FH		74'	FH
	16'	SMH-202	40/39		
53 SHC	23'	FH	WHC	35'	SDM-417
	31'	SMH-202		36'	FH
52 SHC	102'	FH	40 SHC	49'	SDM-417
	18'	SMH-202		47'	FH
51/50			39 SHC	73'	SDM-417
WHC	33'	SMH-202		18'	FH
	49'	SMH-203	38/37		
51 SHC	28'	SMH-202	WHC	13'	FH
	54'	SMH-203		24'	SMH-204
50 SHC	27'	SMH-202			
	27'	SMH-203			

UNIT #	LENGTH	TO	UNIT	LENGTH	TO
86/86			100 SHC	61'	SDM-418
WHC	11.6'	SMH-206	99 SHC	38.5'	SDM-418
	9.5'	SMH-LOT 26		30'	SMH-204
86 SHC	16.3'	SMH-206	98		
	123.5'	WHC-LOT 26	WHC	57.5'	FH
70 SHC	31.5'	SMH-206		27'	SMH-204
	28'	WHC-LOT 26	SHC	51'	FH
27/28				35'	SMH-204
WHC	53.3'	SMH-206	97/96		
	28'	SMH-LOT 26	WHC	40'	FH
27 SHC	38.5'	SMH-206		58'	SMH-204
	24'	SMH-LOT 26	97 SHC	45.5'	FH
28 SHC	32.5'	SMH-206		43'	SMH-204
	30.5'	SMH-LOT 26	96 SHC	59'	FH
29/30				80'	SMH-204
WHC	87.5'	SMH-206	95		
	26.6'	WHC-LOT 26	WHC	86'	FH
29 SHC	67'	SMH-206		24'	SDM-417
	26.6'	WHC-LOT 26	SHC	76'	FH
30 SHC	51'	SMH-206		42'	SDM-417
	28'	WHC-LOT 26	94		
31/32			WHC	30'	SDM-417
WHC	46'	SMH-206		117'	FH
	28'	SMH-LOT 30	SHC	44'	SDM-417
31 SHC	42.5'	SMH-206		129'	FH
	21'	WHC-LOT 26	93/92		
32 SHC	25'	SMH-206	WHC	100'	SMH-203
	26.5'	WHC-LOT 26		83'	SDM-416
103			93 SHC	115'	SMH-203
WHC	12.5'	SMH-206		103'	SDM-416
	87'	SMH-419	92 SHC	28'	SMH-203
SHC	75.6'	SMH-206		77'	SDM-416
	61'	SMH-419	91		
102/101			WHC	26'	SDM-416
WHC	28.5'	SDM-419		37'	SMH-203
	104.6'	SMH-206	SHC	49'	SDM-416
102 SHC	43'	SMH-419		60'	SMH-203
	139'	SMH-204	90		
101 SHC	29'	SMH-419	WHC	24'	SDM-416
	114'	SMH-204		73'	SMH-203
100/99			SHC	44'	SDM-416
WHC	42'	SDM-418		44'	SMH-203
	45'	SDM-419	89/88		
100 SHC	38'	SDM-419	WHC	38'	FH

LEGEND

I = INLET
 SMH = SANITARY SEWER
 SDM = STORM DRAIN MH

AS BUILT
 DATE: JANUARY 2007

DEPARTMENT OF PUBLIC WORKS
 HOWARD COUNTY, MARYLAND
 DEPARTMENT OF PLANNING & ZONING
 HOWARD COUNTY, MARYLAND
 10/04/07
 CHIEF, BUREAU OF UTILITIES
 CHIEF, DEVELOPMENT ENGINEERING DIVISION

CENTURY ENGINEERING
 CONSULTING ENGINEERS - PLANNERS
 10710 GILROY ROAD
 HUNT VALLEY, MD 21031
 DES: RAM
 DRN: JBD
 CHK: WPK
 DATE: 4-19-06
 CEI
 BY NO
 ADDED NEW SHEET
 REVISION
 DATE
 JAN.07

WATER and SEWER EXTENSION
 WHC AND SHC AS-BUILTS
 600' SCALE MAP NO. 46 BLOCK NO. 4

MAPLE LAWN FARMS
 CONTRACT No. 24-4238-D
 HILLSIDE DISTRICT - AREA 1
 LOTS 1 THROUGH 59, OPEN SPACE LOT 60, COMMON
 OPEN SPACE LOTS 61 & 62, AND PARCELS 'F' & 'G'
 HOWARD COUNTY, MARYLAND
 ELECTION DISTRICT No. 5
 SCALE AS SHOWN
 SHEET 5 OF 5