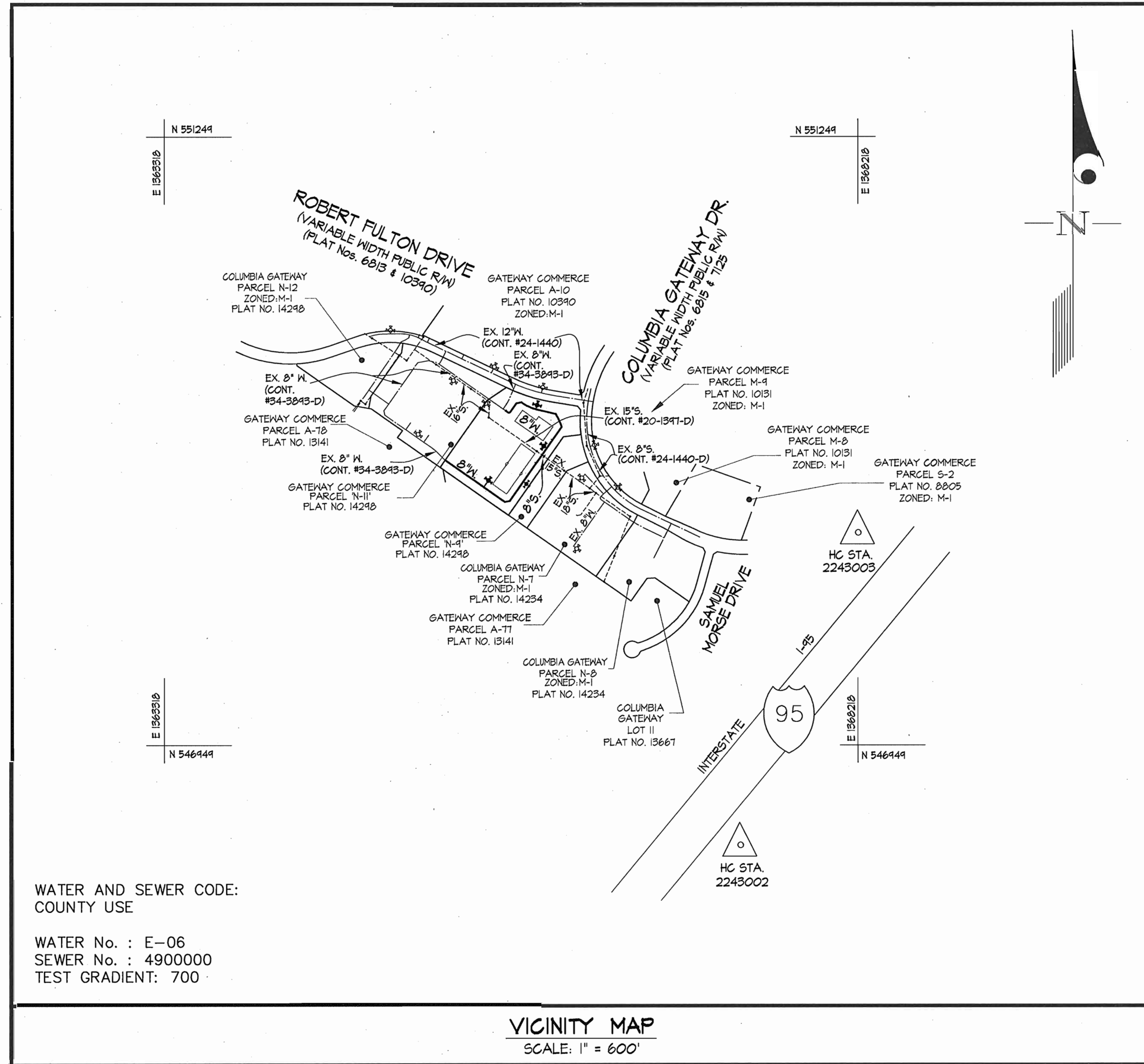


QUANTITIES				
ITEMS	QUANTITIES ESTIMATED	AS-BUILT		
		QUANTITIES	TYPE	MANUFACTURER/SUPPLIER
6" WATER	120 L.F.			
8" WATER MAIN	1648 L.F.			
6" CAP	2 EA.			
8"x6" TEE	2 EA.			
8" 1/8 H.B.	8 EA.			
8" 1/32 H.B.	1 EA.			
6" VALVE	6 EA.			
8"x6" FHT	4 EA.			
FIRE HYDRANT	4 EA.			
8" P.V.C. SEWER	20 L.F.			
4" MANHOLE	1 EA.			
TYPE 'B' DROP CONNECTION	1 EA.			
NAME OF UTILITY CONTRACTOR:				
SURVEY AND DRAFTING DIV.		CHECKBOX:	AS-BUILT DATE:	

PREPARED FOR:
 GATEWAY TO LLC
 1061 COLUMBIA GATEWAY DRIVE
 COLUMBIA, MARYLAND 21046
 PH: 410-290-1400 EXT. 1461
 ATTN: MR. R. COLFAX SCHNORF JR.

BENCHMARK DESCRIPTIONS
 2243002
 STANDARD DISC ON CONCRETE MONUMENT
 2243003
 STANDARD DISC ON CONCRETE MONUMENT



WATER AND SEWER CODE:
 COUNTY USE
 WATER No. : E-06
 SEWER No. : 4900000
 TEST GRADIENT: 700

TYPE OF BUILDING	OFFICE
NUMBER OF UNITS	2
NUMBER OF S.H.C.'s	2
NUMBER OF W.H.C.'s	2
DRAINAGE AREA	LITTLE PATUXENT
TREATMENT PLANT	LITTLE PATUXENT

GENERAL NOTES

- PART I
- APPROXIMATE LOCATIONS OF EXISTING MAINS ARE SHOWN. THE CONTRACTOR SHALL TAKE ALL NECESSARY PRECAUTIONS TO PROTECT EXISTING MAINS AND SERVICES AND MAINTAIN UNINTERRUPTED SUPPLY. ANY DAMAGE INCURRED SHALL BE REPAIRED IMMEDIATELY TO THE SATISFACTION OF THE ENGINEER AT THE CONTRACTOR'S EXPENSE.
 - ALL HORIZONTAL CONTROLS ARE BASED ON MARYLAND STATE COORDINATES, NAD 83/91.
 - ALL VERTICAL CONTROLS ARE BASED ON NAVD 88.
 - ALL PIPE ELEVATIONS SHOWN ARE INVERT ELEVATIONS UNLESS OTHERWISE NOTED ON THE PLANS.
 - CLEAR ALL UTILITIES BY A MINIMUM OF 12". CLEAR ALL POLES BY 5'-0" MINIMUM OR TUNNEL AS REQUIRED UNLESS OTHERWISE NOTED. THE OWNER HAS CONTACTED THE UTILITY COMPANIES AND HAS MADE ARRANGEMENTS FOR BRACING OF POLES AS SHOWN ON THE DRAWINGS. IN THE EVENT THE CONTRACTOR'S WORK REQUIRES THE BRACING OF ADDITIONAL POLES, ANY COST INCURRED BY THE OWNER FOR THE BRACING OF ADDITIONAL POLES OR DAMAGES SHALL BE DEDUCTED FROM MONIES OWED TO THE CONTRACTOR. THE CONTRACTOR SHALL COORDINATE WITH THE UTILITY COMPANIES TO SCHEDULE THE BRACING OF THE POLES.
 - FOR DETAILS NOT SHOWN ON THE DRAWINGS, AND FOR MATERIALS AND CONSTRUCTION METHODS USE HOWARD COUNTY DESIGN MANUAL, VOLUME IV, STANDARD SPECIFICATIONS AND DETAILS FOR CONSTRUCTION (LATEST EDITION). THE CONTRACTOR SHALL HAVE A COPY OF VOLUME IV ON THE JOB.
 - WHERE TEST PITS HAVE BEEN MADE ON EXISTING UTILITIES THEY ARE NOTED BY THE SYMBOL AT THE LOCATIONS OF THE TEST PIT. A NOTE OR NOTES CONTAINING THE RESULTS OF THE TEST PIT OR PITS IS INCLUDED ON THE DRAWINGS. EXISTING UTILITIES IN THE VICINITY OF THE PROPOSED WORK FOR WHICH TEST PITS HAVE NOT BEEN DUG SHALL BE LOCATED BY THE CONTRACTOR TWO WEEKS IN ADVANCE OF CONSTRUCTION OPERATIONS AT HIS OWN EXPENSE.
 - THE CONTRACTOR SHALL NOTIFY THE FOLLOWING UTILITY COMPANIES OR AGENCIES AT LEAST (5) WORKING DAYS BEFORE STARTING WORK SHOWN ON THESE PLANS:

AT&T	1-800-252-1133
BGE (CONTRACTOR SERVICES)	410-850-4620
BGE (UNDER GROUND DAMAGE CONTROL)	410-181-4068
BUREAU OF UTILITIES	410-313-4400
COLONIAL PIPELINE CO.	410-745-1390
MISS UTILITY	1-800-251-TTTT
STATE HIGHWAY ADMINISTRATION	410-531-5533
VERIZON	1-800-743-0033/410-224-4210

- TREES AND SHRUBS ARE TO BE PROTECTED FROM DAMAGE TO MAXIMUM EXTENT. TREES AND SHRUBS LOCATED WITHIN THE CONSTRUCTION STRIP ARE NOT TO BE REMOVED OR DAMAGED BY THE CONTRACTOR.
- THE CONTRACTOR SHALL REMOVE TREES, STUMPS AND ROOTS ALONG LINE OF EXCAVATION. PAYMENT FOR SUCH REMOVAL SHALL BE INCLUDED IN THE UNIT PRICE BID FOR CONSTRUCTION OF THE MAIN.
- THE CONTRACTOR SHALL NOTIFY THE BUREAU OF HIGHWAYS, HOWARD COUNTY, AT 410-313-2450 AT LEAST FIVE (5) WORKING DAYS BEFORE ANY OPEN CUTTING OR BORING/JACKING OF ANY COUNTY ROAD OR BORING/JACKING OPERATION ON COUNTY ROADS FOR LAYING WATER/SEWER MAINS OR HOUSE CONNECTIONS. THE APPROVAL OF THESE DRAWINGS WILL CONSTITUTE COMPLIANCE WITH DPM REQUIREMENT PER SECTION 18.114(A) OF THE HOWARD COUNTY CODE.

PART II - WATER

- ALL WATER MAINS TO BE D.I.P. CLASS 52 UNLESS OTHERWISE NOTED.
- TOPS OF ALL WATER MAINS SHALL HAVE A MINIMUM OF 3'-6" COVER UNLESS OTHERWISE NOTED.
- VALVES ADJACENT TO TEES SHALL BE STRAPPED TO TEES.
- ALL FITTINGS SHALL BE BUTTRESSED OR ANCHORED WITH CONCRETE IN ACCORDANCE WITH THE STANDARD DETAILS UNLESS OTHERWISE PROVIDED FOR ON THE DRAWINGS.
- FIRE HYDRANTS SHALL BE SET TO THE BURY LINE ELEVATIONS SHOWN ON THE DRAWINGS. ALL FIRE HYDRANTS SHALL BE INSTALLED IN ACCORDANCE WITH STANDARD DETAILS. SOIL AROUND THE FIRE HYDRANT SHALL BE COMPACTED IN ACCORDANCE WITH SECTION 1000 AND 1005 OF THE STANDARD SPECIFICATIONS.
- THE CONTRACTOR SHALL NOT OPERATE ANY WATER MAIN VALVES ON THE EXISTING WATER SYSTEM.

PART III - SEWER

- ALL SEWER MAINS SHALL BE D.I.P. OR P.V.C. UNLESS OTHERWISE NOTED.
- ALL MANHOLES SHALL BE 4'-0" INSIDE DIAMETER UNLESS OTHERWISE NOTED.
- FORCE MAINS SHALL BE D.I.P. ONLY.
- MANHOLES SHOWN WITH 12" AND 16" WALLS ARE FOR BRICK MANHOLES ONLY.
- MANHOLES DESIGNATED W.T. IN PLAN AND PROFILE SHALL HAVE WATERTIGHT FRAME AND COVER, STANDARD DETAIL 65.52. WHERE WATERTIGHT MANHOLE FRAMES AND COVERS ARE USED, SET TOP OF FRAME 1'-6" ABOVE FINISHED GRADE UNLESS OTHERWISE NOTED ON THE DRAWINGS.
- HOUSE(S) WITH THE SYMBOL "C.N.S." INDICATES THAT THE CELLAR CANNOT BE SERVED.

CONTRACT No. 24-4229-D
 COLUMBIA GATEWAY
 PARCEL N-10
 PLAT No. 14298
 HOWARD COUNTY, MARYLAND
 DEPARTMENT OF PUBLIC WORKS

SEDIMENT CONTROL MEASURES WILL BE IMPLEMENTED IN ACCORDANCE WITH SECTION 219 OF THE SPECIFICATIONS & WITH ROAD DRAWINGS PLAN SDP-05-13; DRAWINGS FOR SEDIMENT & EROSION CONTROL.

REVIEWED FOR HOWARD SOIL CONSERVATION DISTRICT AND MEETS TECHNICAL REQUIREMENT.

Jim Meyer 10/12/04
 SIGNATURE DATE
 U.S.D.A. NATURAL RESOURCES CONSERVATION SERVICE

THIS DEVELOPMENT PLAN IS APPROVED FOR SOIL EROSION AND SEDIMENT CONTROL BY THE HOWARD SOIL CONSERVATION DISTRICT.

APPROVED:
John L. Blanton 10/12/04
 HOWARD S.C.D. DATE

DEPARTMENT OF PUBLIC WORKS
 HOWARD COUNTY, MARYLAND
R. L. Blanton 10-15-04
 CHIEF, BUREAU OF UTILITIES DATE

DEPARTMENT OF PLANNING AND ZONING
 HOWARD COUNTY, MARYLAND
W. Blanton 10/12/04
 CHIEF, DEVELOPMENT ENGINEERING DIVISION DATE

GLW GUTSCHICK LITTLE & WEBER, P.A.
 CIVIL ENGINEERS, LAND SURVEYORS, LAND PLANNERS, LANDSCAPE ARCHITECTS
 3909 NATIONAL DRIVE - SUITE 250 - BURTONSVILLE OFFICE PARK
 BURTONSVILLE, MARYLAND 20866
 TEL: 301-421-4024 BAL: 410-880-1820 DC/VA: 301-989-2524 FAX: 301-421-4186



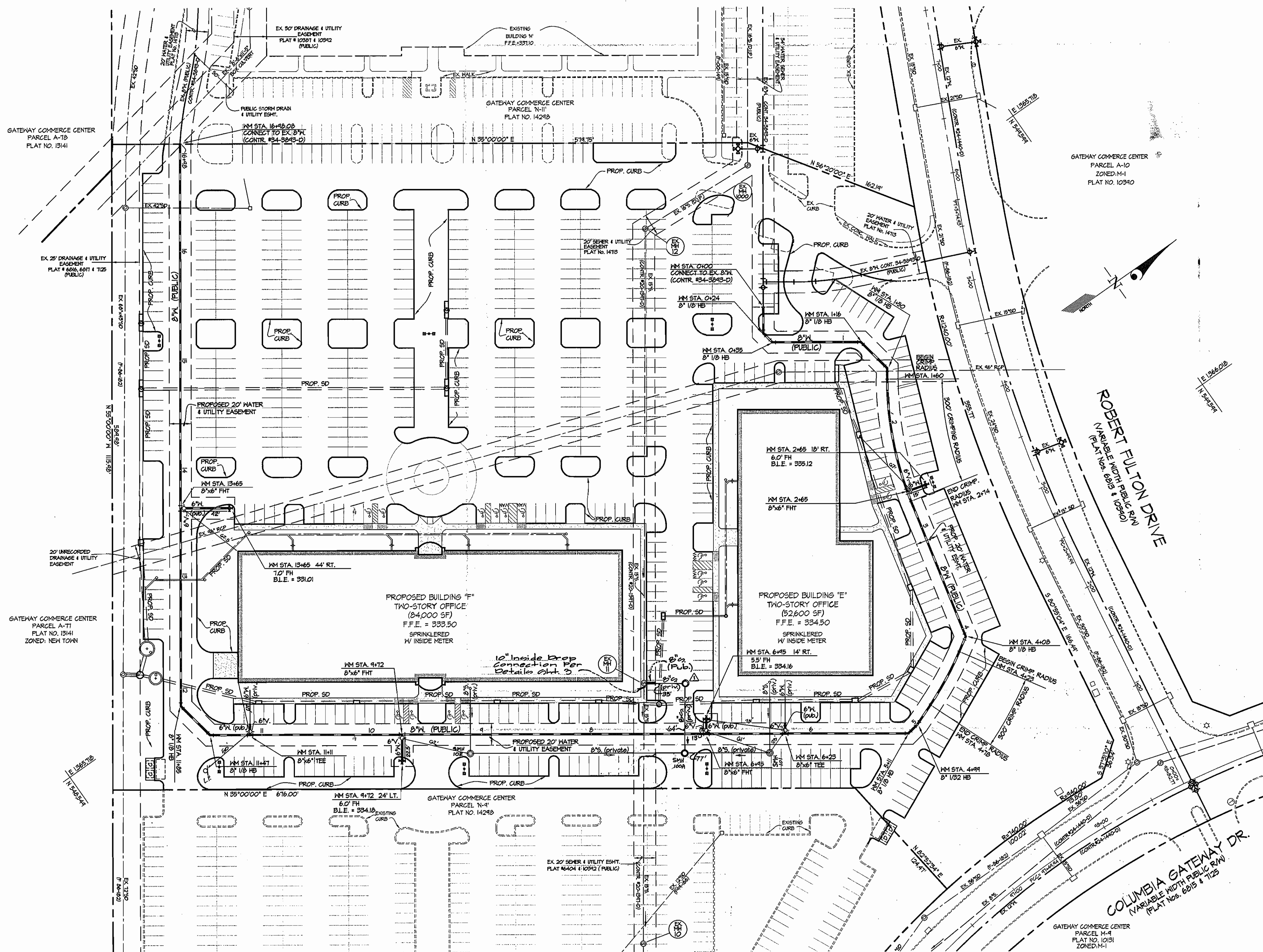
DES: KLP					
DRN: KLP					
CHK: BLM					
DATE: 10/20/04	BY	NO	REVISION	DATE	

TITLE SHEET
 SCALE: AS SHOWN
 600' SCALE MAP NO. 42 BLOCK NO. 12

COLUMBIA GATEWAY
 PARCEL N-10
 PLAT No. 14298
 HOWARD COUNTY, MARYLAND
 ELECTION DISTRICT No. 6
 CONTRACT No. 24-4229-D

GLW FILE No. 04031

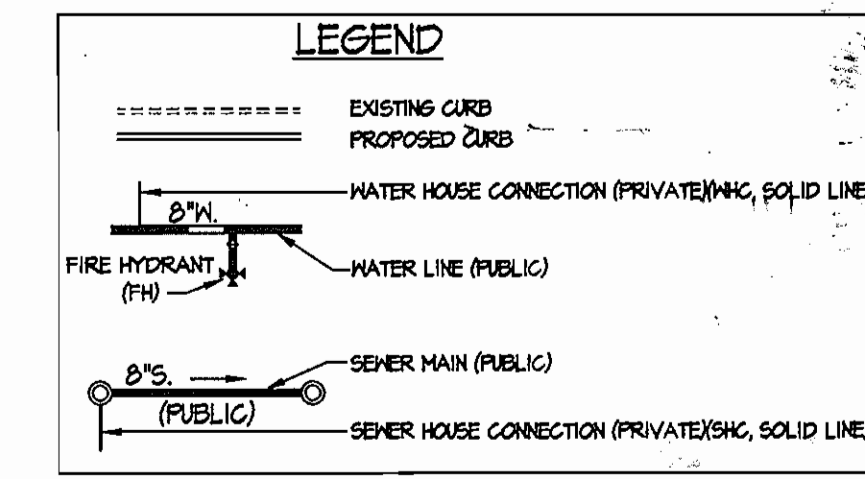
SCALE AS SHOWN
 SHEET 1 OF 3



NOTES:

- THE EXISTING 15" SEWER LINE LOCATED NE OF BUILDING 'F' (CONT. 20-1341-D) MUST BE LINED WITH INSITUFORM LINER SECTIONS MH-12/MH-11/ MH-10/MH-12 THROUGH MH-10, PRIOR TO ANY CONSTRUCTION ACTIVITY.
- TEST PIT AT THE LOCATION OF THE EXISTING 15" CLAY PIPE TO EVALUATE THE CONDITION OF THE PIPE. THE ENGINEER WILL DECIDE, BASED ON THE CONDITION, THE THICKNESS OF THE INSITUFORM LINER.

FITTING INFORMATION		
LOCATION	FITTING	NAD 83 COORDINATES
NM STA. 0+24	8" 1/2" HB	N: 544284 E: 1365750
NM STA. 0+25	8" 1/2" HB	N: 544301 E: 1365761
NM STA. 1+16	8" 1/2" HB	N: 544367 E: 1365807
NM STA. 1+50	8" 1/2" HB	N: 544373 E: 1365841
NM STA. 2+65	8" 1/2" FHT	N: 544323 E: 1365843
NM STA. 4+02	8" 1/2" HB	N: 544290 E: 1366008
NM STA. 4+49	8" 1/2" HB	N: 544208 E: 1366123
NM STA. 5+11	8" 1/2" HB	N: 544197 E: 1366125
NM STA. 6+23	8" 1/2" TEE	N: 544105 E: 1366060
NM STA. 6+45	8" 1/2" FHT	N: 544046 E: 1366019
NM STA. 9+12	8" 1/2" FHT	N: 543819 E: 1366860
NM STA. 11+11	8" 1/2" TEE	N: 543705 E: 1366781
NM STA. 11+47	8" 1/2" HB	N: 543676 E: 1366720
NM STA. 11+85	8" 1/2" HB	N: 543664 E: 1366723
NM STA. 13+69	8" 1/2" FHT	N: 543773 E: 1366575



GLW FILE #04031
04031fws.dwg

DEPARTMENT OF PUBLIC WORKS
HOWARD COUNTY, MARYLAND
R. A. B... 10-15-04
CHIEF, BUREAU OF UTILITIES DATE

DEPARTMENT OF PLANNING AND ZONING
HOWARD COUNTY, MARYLAND
W. D. ... 10/21/04
CHIEF, DEVELOPMENT ENGINEERING DIVISION DATE

GLW GUTSCHICK LITTLE & WEBER, P.A.
CIVIL ENGINEERS, LAND SURVEYORS, LAND PLANNERS, LANDSCAPE ARCHITECTS
3909 NATIONAL DRIVE - SUITE 250 - BURTONSVILLE OFFICE PARK
BURTONSVILLE, MARYLAND 20866
TEL: 301-421-4024 BALT: 410-880-1820 DC/VA: 301-989-2524 FAX: 301-421-4188

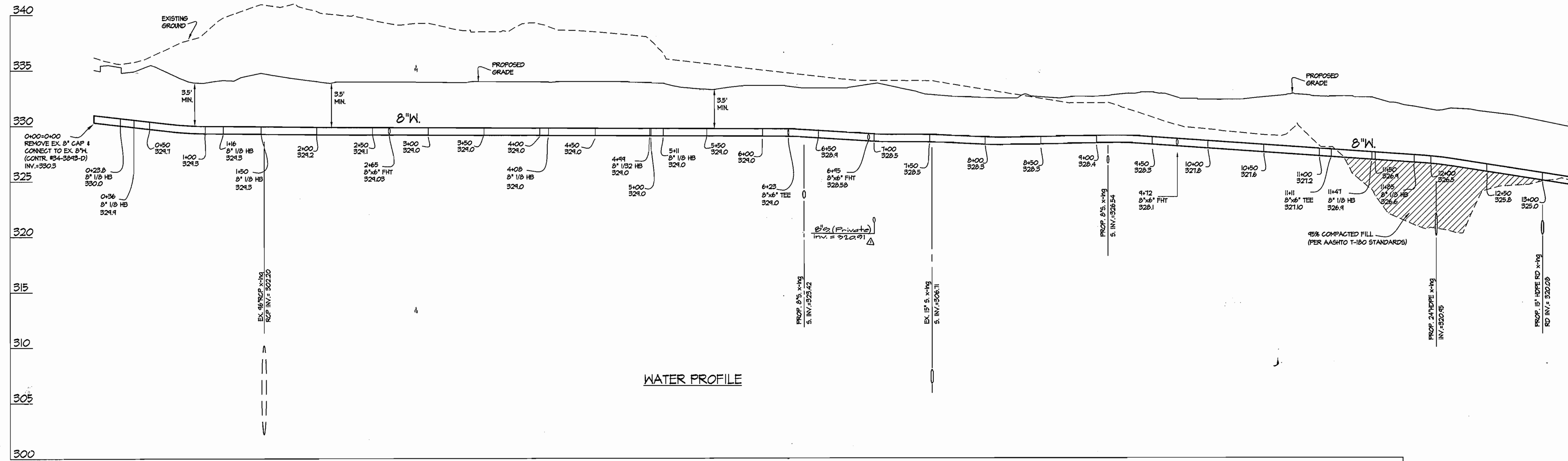


DES: KLP					
DRN: KLP					
CHK: EJM	KCI	2	AS-BUILT DATA ADDED	6/27/05	
DATE: 2004			Rev. Sewer Main	5/17/05	
BY NO			REVISION	DATE	

WATER and SEWER EXTENSION PLAN
SCALE: 1" = 50'
600' SCALE MAP NO. 42 BLOCK NO. 12

COLUMBIA GATEWAY
PARCEL N-10
PLAT No. 14298
HOWARD COUNTY, MARYLAND
ELECTION DISTRICT No. 6
CONTRACT No. 24-4229-D

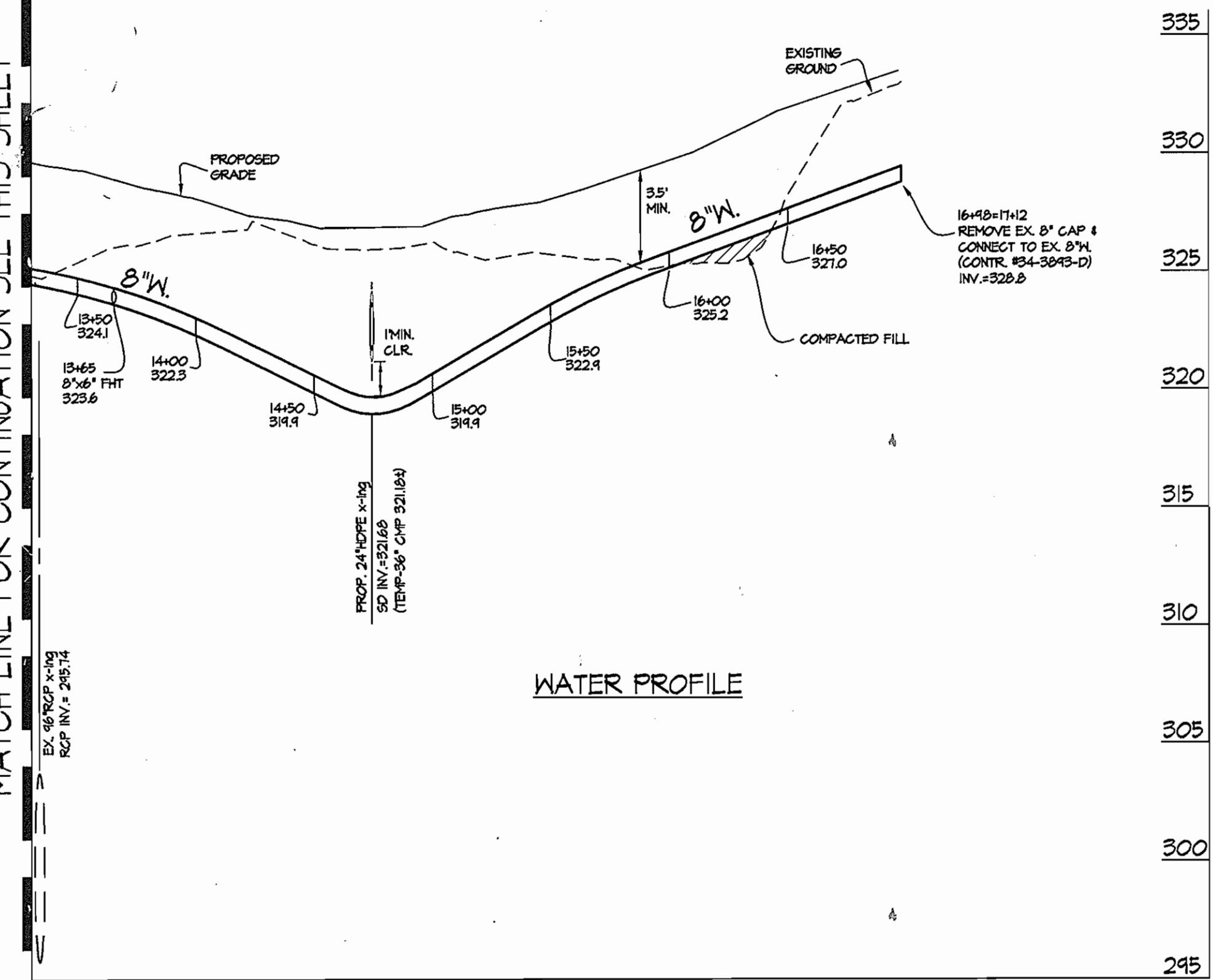
SCALE AS SHOWN
SHEET 2 OF 3



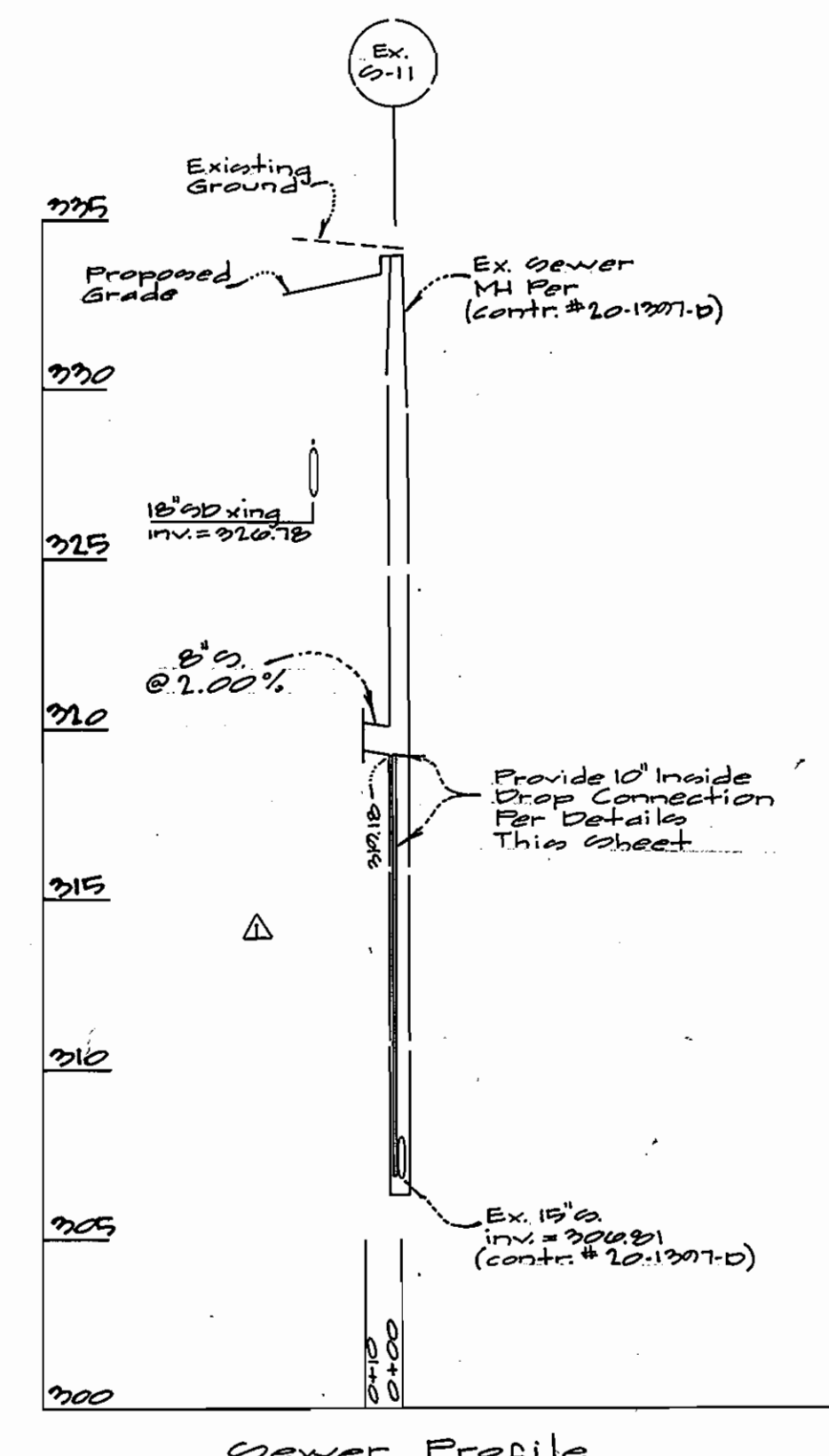
MATCH LINE FOR CONTINUATION SEE THIS SHEET

WATER PROFILE

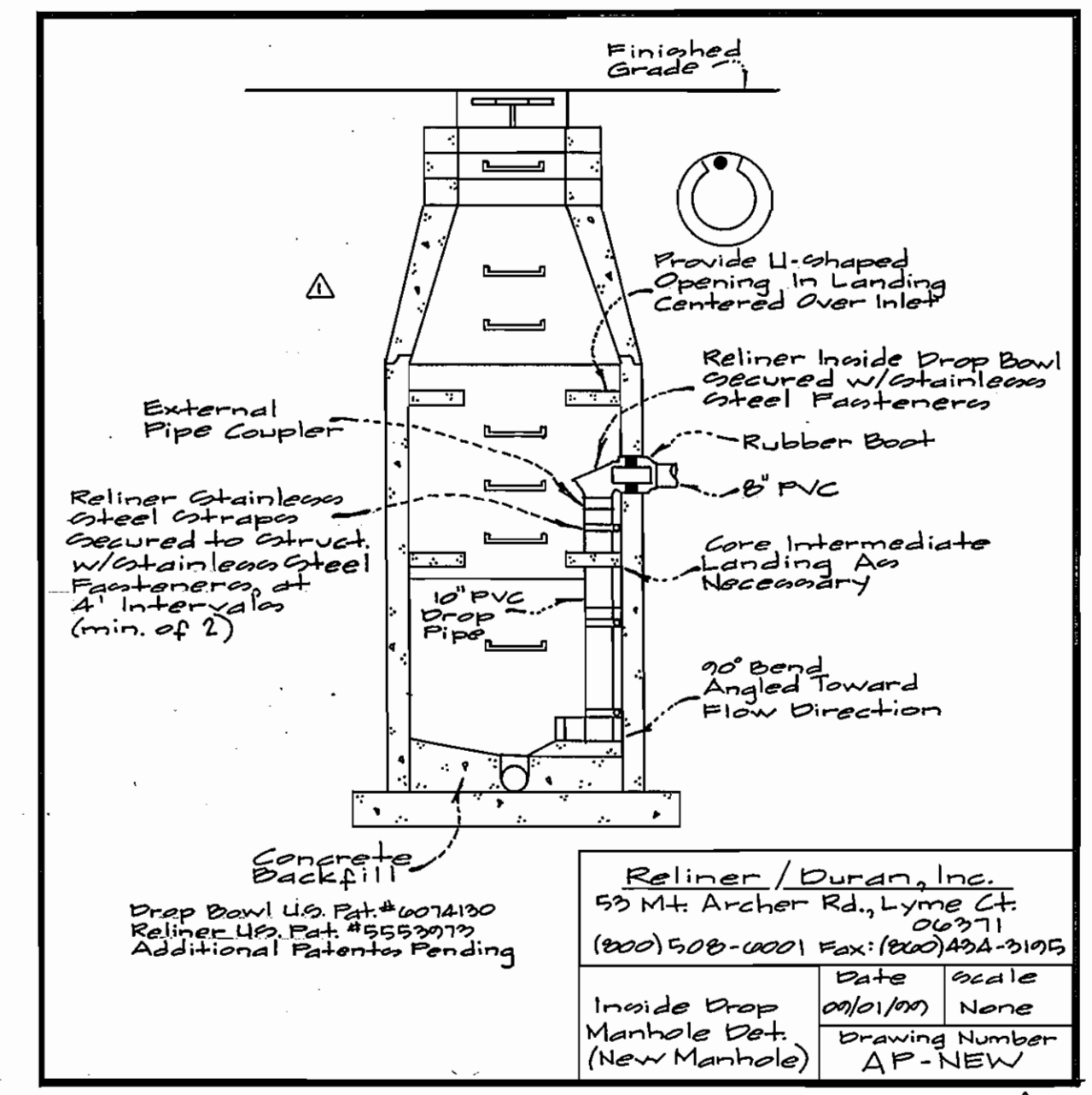
MATCH LINE FOR CONTINUATION SEE THIS SHEET



WATER PROFILE

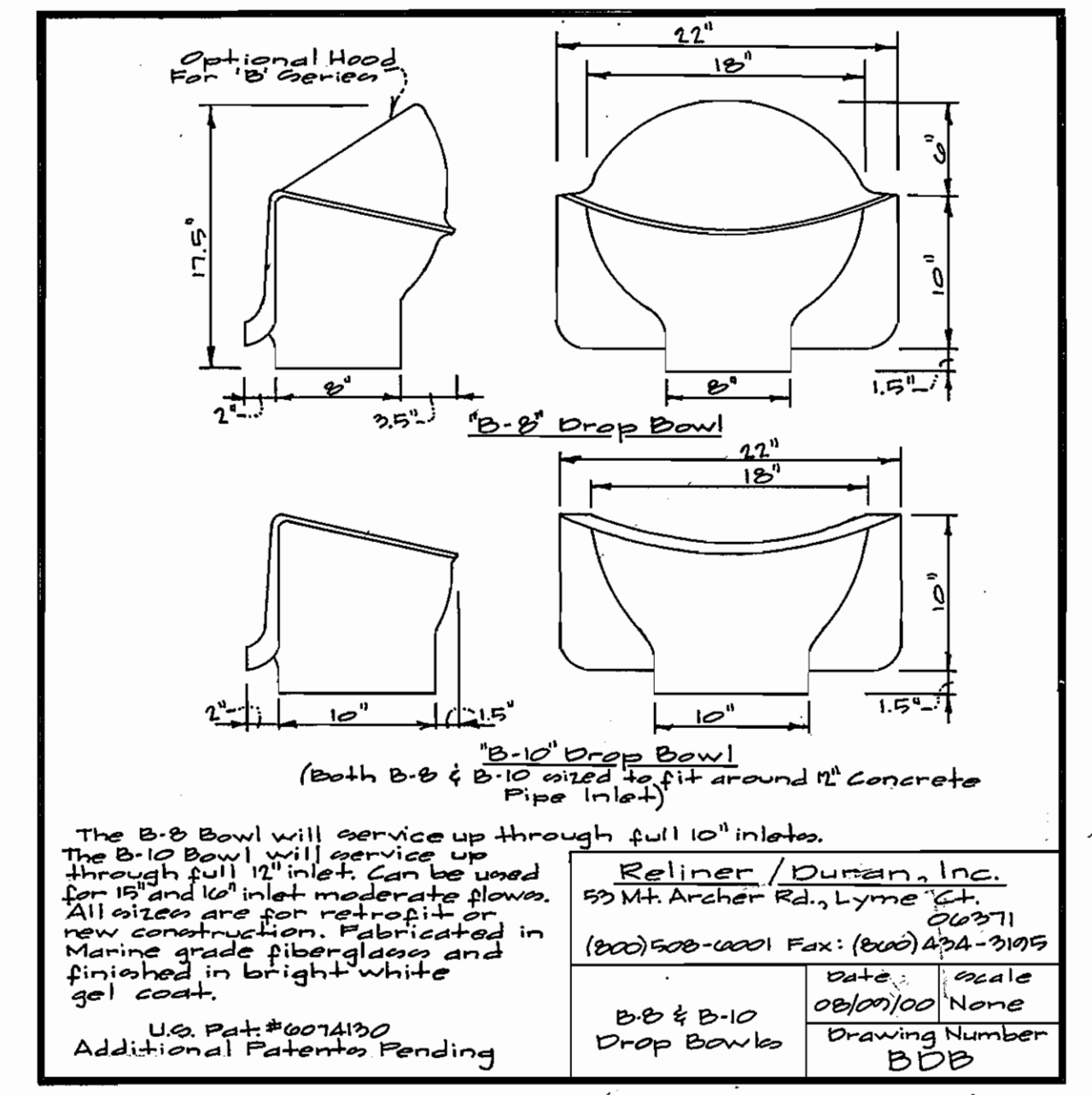


Sewer Profile



Reliner / Duran, Inc.
55 Mt. Archer Rd., Lyme Ct.
06371
(800) 508-0001 Fax: (800) 894-3195

Drop Bowl U.S. Pat. #6074190	Date	Scale
Reliner U.S. Pat. #5552079	08/1/00	None
Additional Patents Pending	Drawing Number	AP-NEW



Reliner / Duran, Inc.
55 Mt. Archer Rd., Lyme Ct.
06371
(800) 508-0001 Fax: (800) 894-3195

The B-10 Bowl will service up through full 10" inlets.	Date	Scale
The B-8 Bowl will service up through full 8" inlets. Can be used for 10" and 12" inlet moderate flows. All sizes are for retrofit or new construction. Fabricated in marine grade fiberglass and finished in bright white gel coat.	08/01/00	None
U.S. Pat. #6074190 Additional Patents Pending	Drawing Number	BDB

FOR ALL PROFILES ON THIS SHEET
SCALE: 1" = 5' VERT.
1" = 50' HORIZ.

GLW FILE #04031
04031fws.dwg

DEPARTMENT OF PUBLIC WORKS
HOWARD COUNTY, MARYLAND
R. L. ... 10-15-04
CHIEF, BUREAU OF UTILITIES DATE

DEPARTMENT OF PLANNING AND ZONING
HOWARD COUNTY, MARYLAND
... 10/21/04
CHIEF, DEVELOPMENT ENGINEERING DIVISION DATE

GLW GUTSCHICK LITTLE & WEBER, P.A.
CIVIL ENGINEERS, LAND SURVEYORS, LAND PLANNERS, LANDSCAPE ARCHITECTS
3909 NATIONAL DRIVE - SUITE 250 - BURTONSVILLE OFFICE PARK
BURTONSVILLE, MARYLAND 20866
TEL: 301-421-4024 BAL: 410-880-1820 DC/VA: 301-989-2524 FAX: 301-421-4186

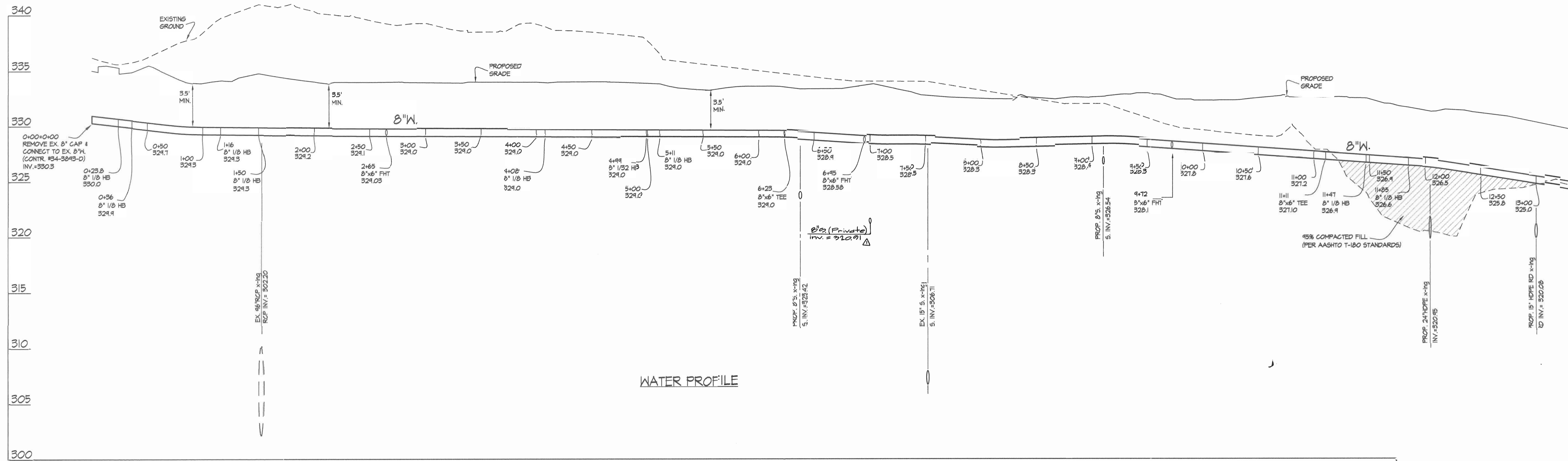


DES: KLP			
DRN: KLP			
CHK: BJM			
DATE: 2004			
BY	NO	REVISION	DATE
		Rev. Sewer & add Details	5/17/05

WATER and SEWER EXTENSION PLAN
600' SCALE MAP NO. 42 BLOCK NO. 12

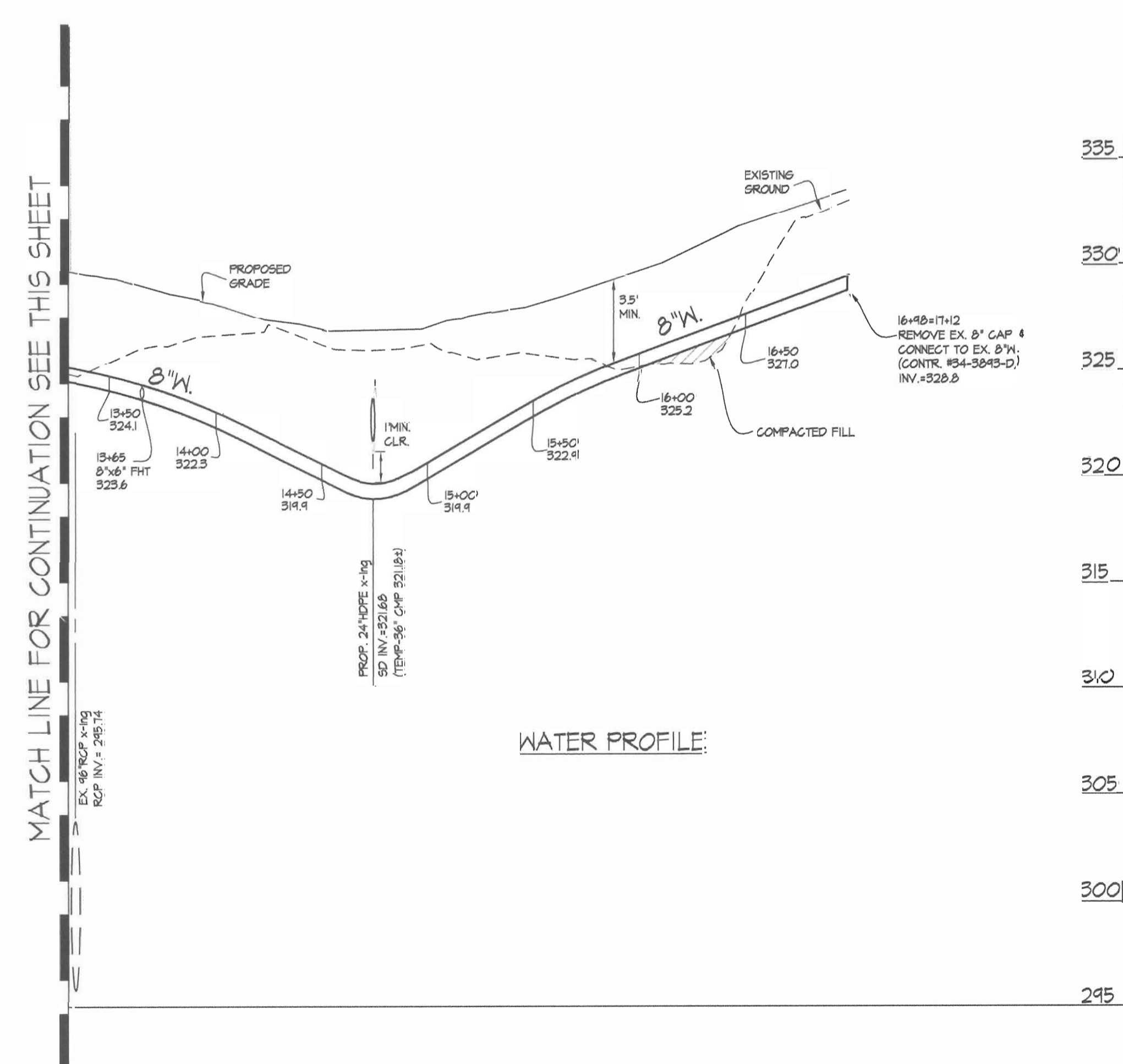
COLUMBIA GATEWAY
PARCEL N-10
PLAT No. 14298
HOWARD COUNTY, MARYLAND
ELECTION DISTRICT No. 6
CONTRACT No. 24-4229-D

SCALE AS SHOWN
SHEET 3 OF 3



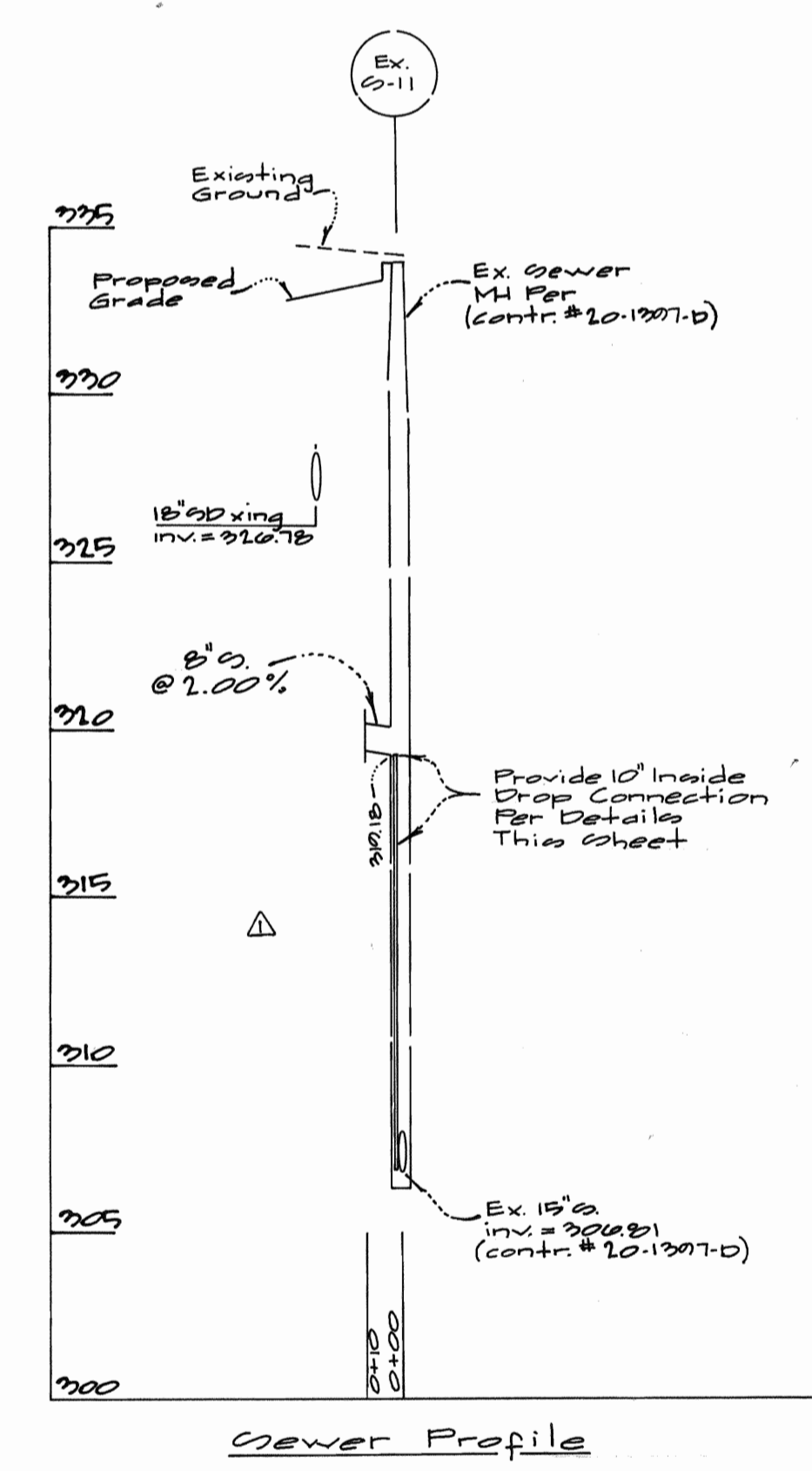
MATCH LINE FOR CONTINUATION SEE THIS SHEET

WATER PROFILE

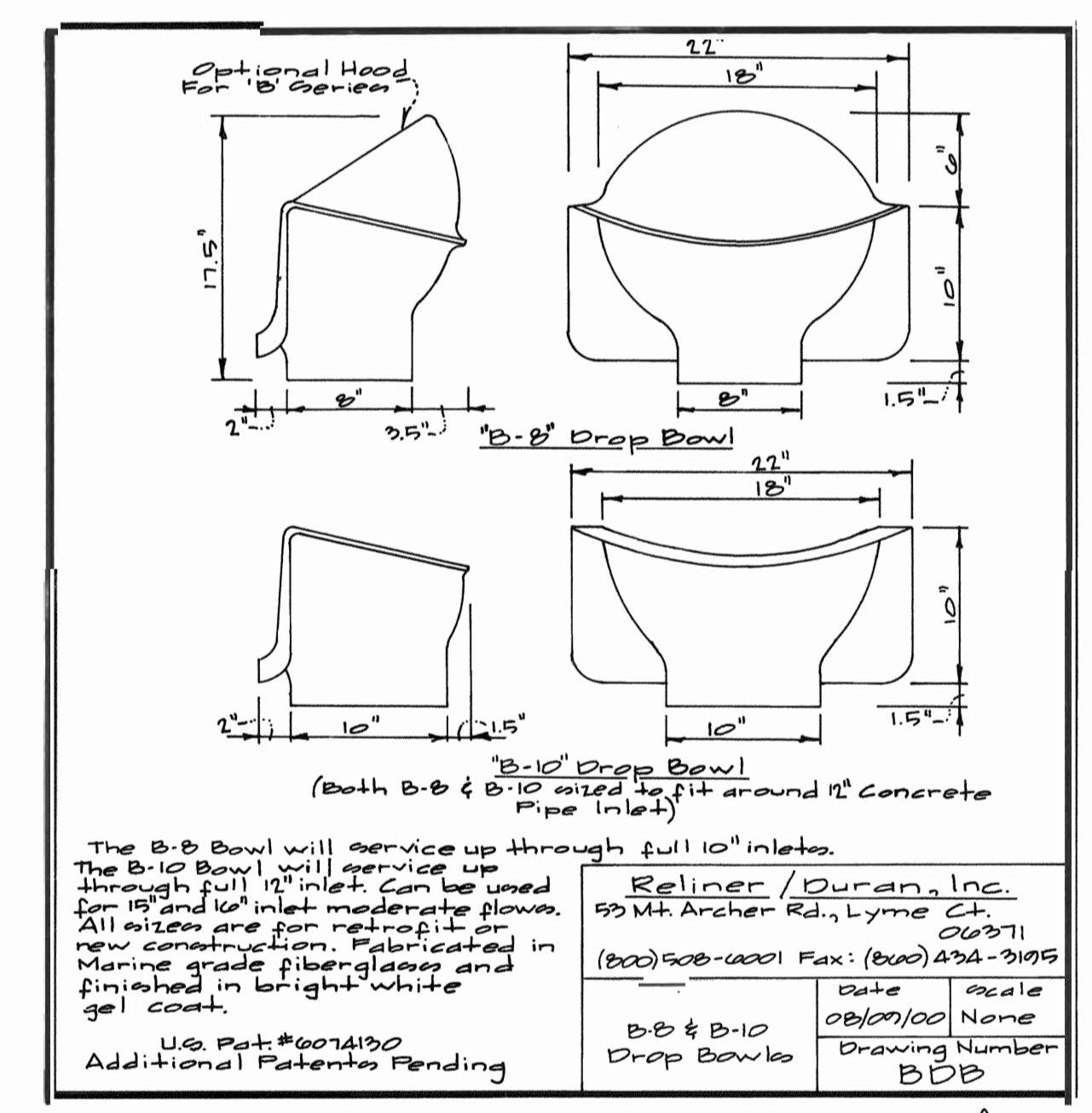
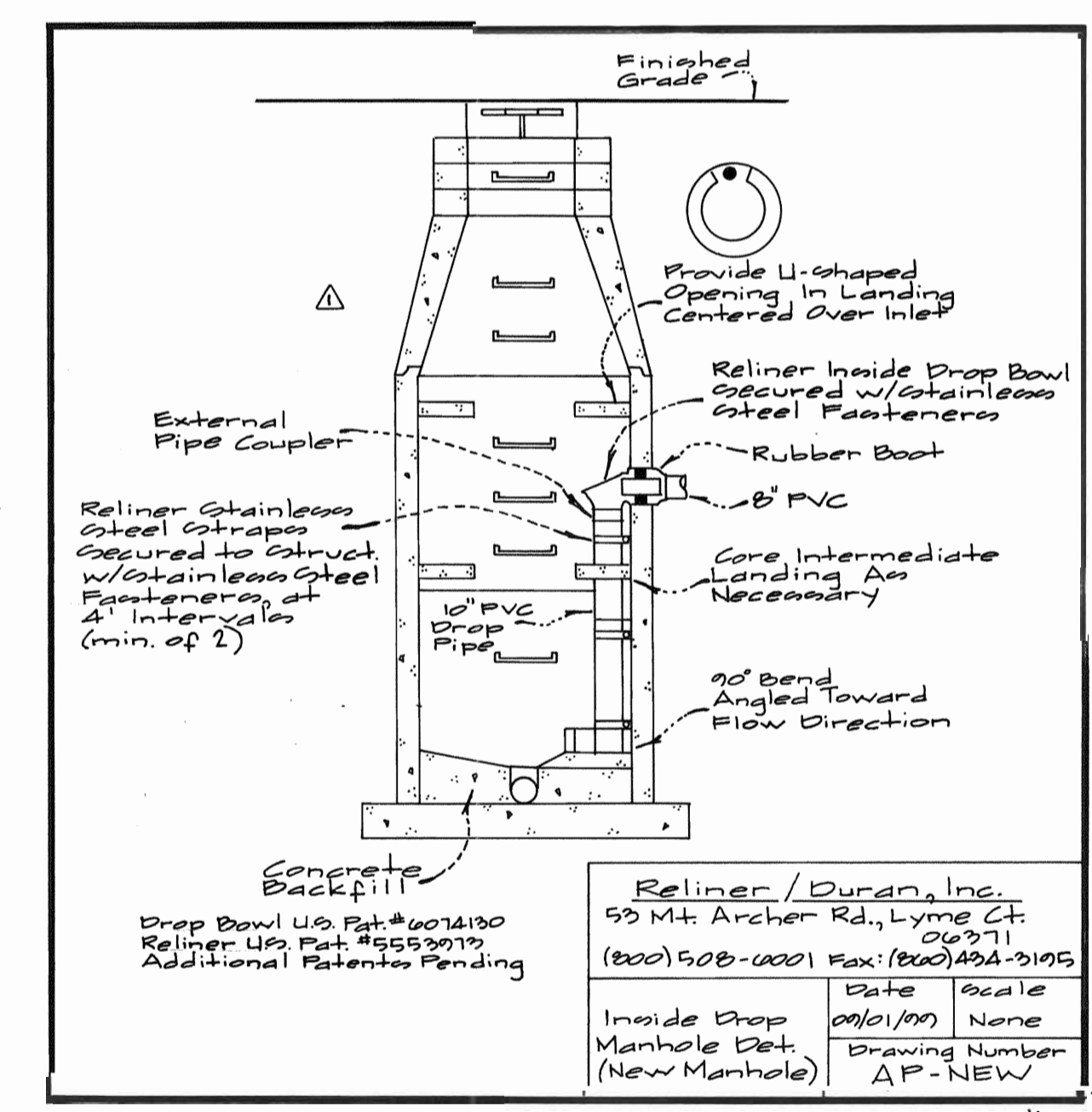


MATCH LINE FOR CONTINUATION SEE THIS SHEET

WATER PROFILE



Sewer Profile



FOR ALL PROFILES ON THIS SHEET
 SCALE: 1" = 5' VERT.
 1" = 50' HORIZ.

GLW FILE #04031
 04031fws.dwg

DEPARTMENT OF PUBLIC WORKS
 HOWARD COUNTY, MARYLAND
 Chief, Bureau of Utilities

DEPARTMENT OF PLANNING AND ZONING
 HOWARD COUNTY, MARYLAND
 Chief, Development Engineering Division

GLWGUTSCHICK LITTLE & WEBER, P.A.
 CIVIL ENGINEERS, LAND SURVEYORS, LAND PLANNERS, LANDSCAPE ARCHITECTS
 3909 NATIONAL DRIVE - SUITE 250 - BURTONSVILLE OFFICE PARK
 BURTONSVILLE, MARYLAND 20866
 TEL: 301-421-4024 BAL: 410-880-1820 DC/VA: 301-589-2524 FAX: 301-421-4186

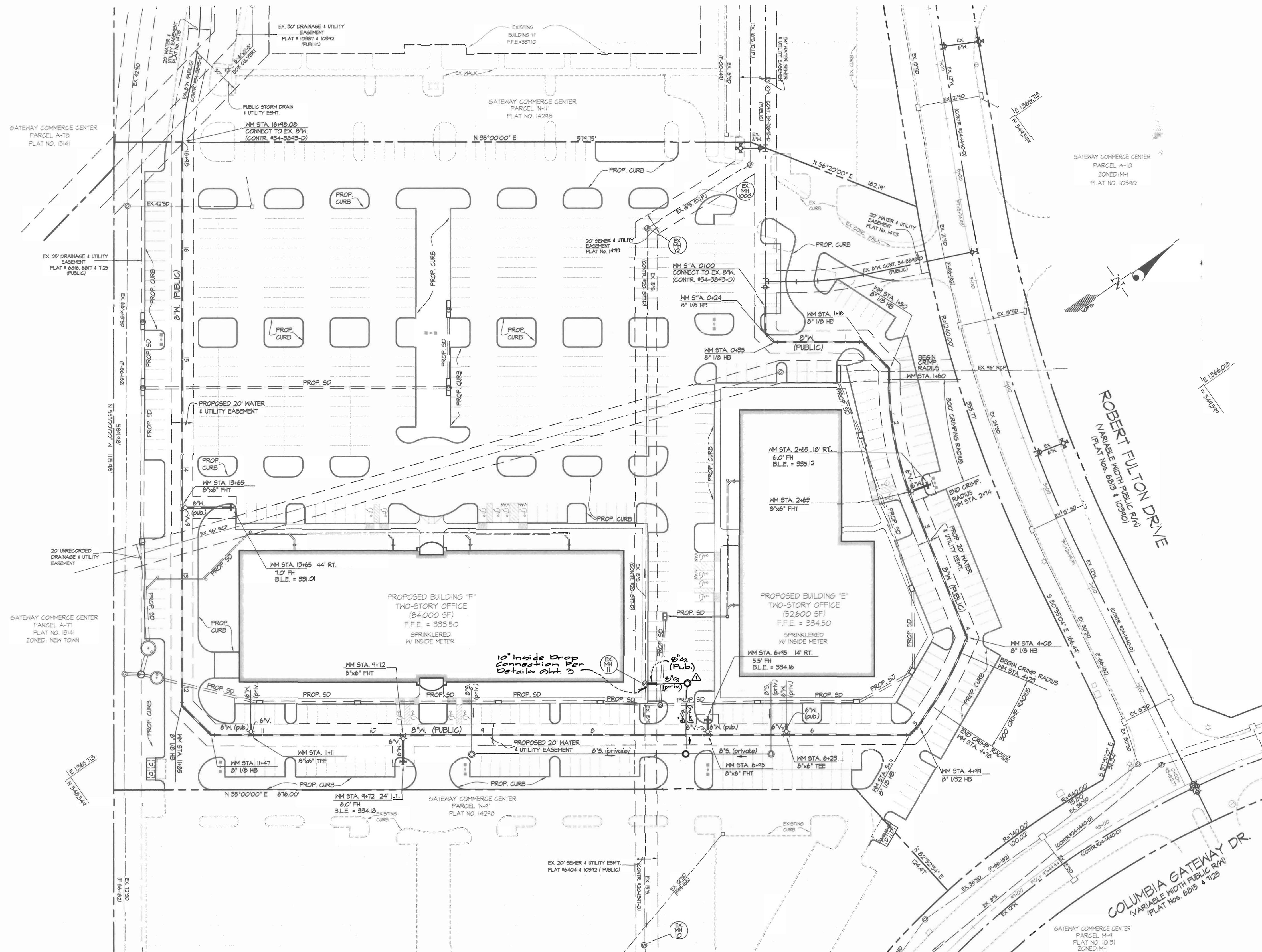


DES:	KLP				
DRN:	KLP				
CHK:	BJM				
DATE:	OCT. 2004				
BY:	NO	Rev. Sewer & add Details	5/17/05		
		REVISION	DATE		

WATER and SEWER EXTENSION PLAN
 800' SCALE MAP NO. 42 BLOCK NO. 12'

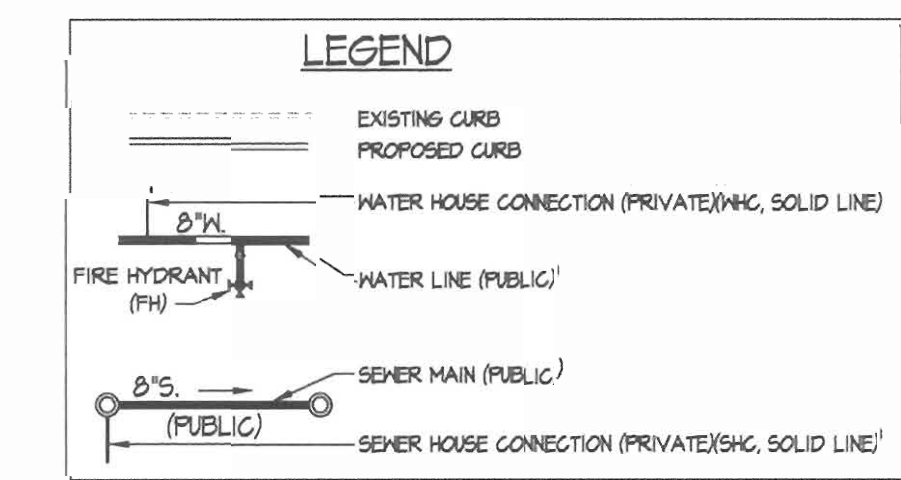
COLUMBIA GATEWAY
 PARCEL N-10
 PLAT No. 14298
 HOWARD COUNTY, MARYLAND
 ELECTION DISTRICT No. 6
 CONTRACT No. 24-4229-D

SCALE AS SHOWN
 SHEET 2 OF 3



- NOTES:
- THE EXISTING 15" SEWER LINE LOCATED NE OF BUILDING F (CONT. 20-1391-D) MUST BE LINED WITH INSITUFORM LINER SECTIONS MH-12/MH-11/ MH-10(MH-12 THROUGH MH-10), PRIOR TO ANY CONSTRUCTION ACTIVITY.
 - TEST PIT AT THE LOCATION OF THE EXISTING 15" CLAY PIPE TO EVALUATE THE CONDITION OF THE PIPE. THE ENGINEER WILL DECIDE, BASED ON THE CONDITION, THE THICKNESS OF THE INSITUFORM LINER.

FITTING INFORMATION		
LOCATION	FITTING	NAD 83 COORDINATES
NM STA 0+24	8" I/B HB	N: 544299 E: 1365750
NM STA 0+35	8" I/B HB	N: 544301 E: 1365761
NM STA 1+6	8" I/B HB	N: 544367 E: 1365807
NM STA 1+50	8" I/B HB	N: 544373 E: 1365841
NM STA 2+65	8" x 6" FHT	N: 544323 E: 1365943
NM STA 4+08	8" I/B HB	N: 544290 E: 1366033
NM STA 4+99	8" I/B2 HB	N: 544208 E: 1366123
NM STA 5+11	8" I/B HB	N: 544197 E: 1366125
NM STA 6+23	8" x 6" TEE	N: 544105 E: 1366060
NM STA 6+95	8" x 6" FHT	N: 544046 E: 1366019
NM STA 9+12	8" x 6" FHT	N: 544019 E: 1365860
NM STA 11+11	8" x 6" TEE	N: 544005 E: 1365781
NM STA 11+47	8" I/B HB	N: 544076 E: 1365760
NM STA 11+85	8" I/B HB	N: 544069 E: 1365723
NM STA 13+65	8" x 6" FHT	N: 544073 E: 1365575



GLW FILE #04031
040311ws.dwg

DEPARTMENT OF PUBLIC WORKS
HOWARD COUNTY, MARYLAND
R. J. ...
CHIEF, BUREAU OF UTILITIES

DEPARTMENT OF PLANNING AND ZONING
HOWARD COUNTY, MARYLAND
...
CHIEF, DEVELOPMENT ENGINEERING DIVISION

GLW GUTSCHICK LITTLE & WEBER, P.A.
CIVIL ENGINEERS, LAND SURVEYORS, LAND PLANNERS, LANDSCAPE ARCHITECTS
3909 NATIONAL DRIVE - SUITE 250 - BURTONVILLE OFFICE PARK
BURTONVILLE, MARYLAND 20866
TEL: 301-421-4024 FAX: 301-989-2524



DES:	KLP
DRN:	KLP
CHK:	BJM
DATE:	2004
BY:	NO
NO:	Rev. Sewer Main
REVISION:	
DATE:	5/17/05

WATER and SEWER EXTENSION PLAN
SCALE: 1" = 50'
600' SCALE MAP NO. 42 BLOCK NO. 12

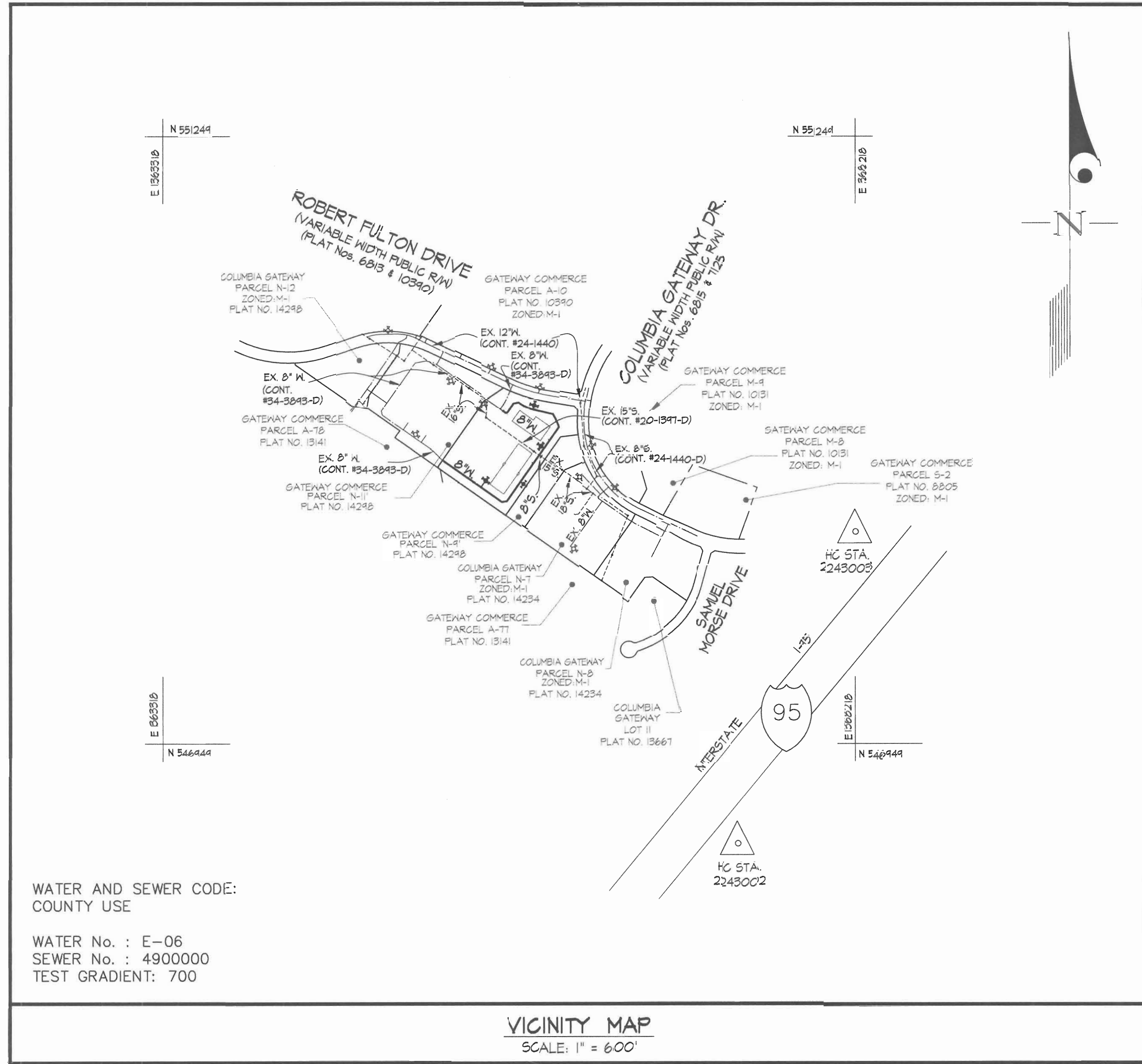
COLUMBIA GATEWAY
PARCEL N-10
PLAT No. 14298
HOWARD COUNTY, MARYLAND
ELECTION DISTRICT No. 6
CONTRACT No. 24-4229-D

SCALE AS SHOWN
SHEET 2 OF 3

QUANTITIES				
ITEMS	QUANTITIES ESTIMATED	AS-BUILT		
		QUANTITIES	TYPE	MANUFACTURER/SUPPLIER
6" WATER	120 L.F.			
8" WATER MAIN	1648 L.F.			
6" CAP	2 EA.			
8"x6" TEE	2 EA.			
8" 1/8 H.B.	8 EA.			
8" 1/32 H.B.	1 EA.			
6" VALVE	6 EA.			
8"x6" FHT	4 EA.			
FIRE HYDRANT	4 EA.			
8" P.V.C. SEWER	Δ 10 L.F.			
TYPE 'B' DROP CONNECTION	1 EA.			
Δ 10" inside drop conn.	1 EA.			
NAME OF UTILITY CONTRACTOR:				
SURVEY AND DRAFTING DIV.	CHECKBOX:	AS-BUILT DATE:		

PREPARED FOR:
 GATEWAY TO LLC
 1061 COLUMBIA GATEWAY DRIVE
 COLUMBIA, MARYLAND 21046
 PH: 410-290-1400 EXT. 1461
 ATTN: MR. R. COLFAX SCHNORF JR.

BENCHMARK DESCRIPTIONS
 2243002
 STANDARD DISC ON CONCRETE MONUMENT
 2243003
 STANDARD DISC ON CONCRETE MONUMENT



WATER AND SEWER CODE:
 COUNTY USE
 WATER No. : E-06
 SEWER No. : 4900000
 TEST GRADIENT: 700

VIGNY MAP
 SCALE: 1" = 600'

TYPE OF BUILDING	OFFICE
NUMBER OF UNITS	2
NUMBER OF S.H.C.'s	2
NUMBER OF W.H.C.'s	2
DRAINAGE AREA	LITTLE PATUXENT
TREATMENT PLANT	LITTLE PATUXENT

GENERAL NOTES

- PART I
- APPROXIMATE LOCATIONS OF EXISTING MAINS ARE SHOWN. THE CONTRACTOR SHALL TAKE ALL NECESSARY PRECAUTIONS TO PROTECT EXISTING MAINS AND SERVICES AND MAINTAIN UNINTERRUPTED SUPPLY. ANY DAMAGE INCURRED SHALL BE REPAIRED IMMEDIATELY TO THE SATISFACTION OF THE ENGINEER AT THE CONTRACTOR'S EXPENSE.
 - ALL HORIZONTAL CONTROLS ARE BASED ON MARYLAND STATE COORDINATES, NAD 83/91.
 - ALL VERTICAL CONTROLS ARE BASED ON NAVD 88.
 - ALL PIPE ELEVATIONS SHOWN ARE INVERT ELEVATIONS UNLESS OTHERWISE NOTED ON THE PLANS.
 - CLEAR ALL UTILITIES BY A MINIMUM OF 12". CLEAR ALL POLES BY 5'-0" MINIMUM OR TUNNEL AS REQUIRED UNLESS OTHERWISE NOTED. THE OWNER HAS CONTACTED THE UTILITY COMPANIES AND HAS MADE ARRANGEMENTS FOR BRACING OF POLES AS SHOWN ON THE DRAWINGS. IN THE EVENT THE CONTRACTOR'S WORK REQUIRES THE BRACING OF ADDITIONAL POLES OR DAMAGES SHALL BE DEDUCTED FROM MONIES OWED TO THE CONTRACTOR. THE CONTRACTOR SHALL COORDINATE WITH THE UTILITY COMPANIES TO SCHEDULE THE BRACING OF THE POLES.
 - FOR DETAILS NOT SHOWN ON THE DRAWINGS, AND FOR MATERIALS AND CONSTRUCTION METHODS USE HOWARD COUNTY DESIGN MANUAL, VOLUME IV, STANDARD SPECIFICATIONS AND DETAILS FOR CONSTRUCTION (LATEST EDITION). THE CONTRACTOR SHALL HAVE A COPY OF VOLUME IV ON THE JOB.
 - WHERE TEST FITS HAVE BEEN MADE ON EXISTING UTILITIES, THEY ARE NOTED BY THE SYMBOL (C) AT THE LOCATIONS OF THE TEST FIT. A NOTE OR NOTES CONTAINING THE RESULTS OF THE TEST FIT OR FITS IS INCLUDED ON THE DRAWINGS. EXISTING UTILITIES IN THE VICINITY OF THE PROPOSED WORK FOR WHICH TEST FITS HAVE NOT BEEN DUG SHALL BE LOCATED BY THE CONTRACTOR TWO WEEKS IN ADVANCE OF CONSTRUCTION OPERATIONS AT HIS OWN EXPENSE.
2. THE CONTRACTOR SHALL NOTIFY THE FOLLOWING UTILITY COMPANIES OR AGENCIES AT LEAST (5) WORKING DAYS BEFORE STARTING WORK SHOWN ON THESE PLANS:
- | | |
|-----------------------------------|-----------------------------|
| AT&T | 1-800-252-1133 |
| BGE (CONTRACTOR SERVICES) | 410-850-4620 |
| BGE (UNDER GROUND DAMAGE CONTROL) | 410-781-4068 |
| BUREAU OF UTILITIES | 410-313-4400 |
| COLONIAL PIPELINE CO. | 410-795-1390 |
| MISS UTILITY | 1-800-251-7777 |
| STATE HIGHWAY ADMINISTRATION | 410-531-5533 |
| VERIZON | 1-800-749-0053/410-224-9210 |
- TREES AND SHRUBS ARE TO BE PROTECTED FROM DAMAGE TO MAXIMUM EXTENT. TREES AND SHRUBS LOCATED WITHIN THE CONSTRUCTION STRIP ARE NOT TO BE REMOVED OR DAMAGED BY THE CONTRACTOR.
 - THE CONTRACTOR SHALL REMOVE TREES, STUMPS AND ROOTS ALONG LINE OF EXCAVATION. PAYMENT FOR SUCH REMOVAL SHALL BE INCLUDED IN THE UNIT PRICE BID FOR CONSTRUCTION OF THE MAIN.
 - THE CONTRACTOR SHALL NOTIFY THE BUREAU OF HIGHWAYS, HOWARD COUNTY, AT 410-313-2450 AT LEAST FIVE (5) WORKING DAYS BEFORE ANY OPEN CUTTING OR BORING/JACKING OF ANY COUNTY ROAD OR BORING/JACKING OPERATION ON COUNTY ROADS FOR LAYING WATER/SEWER MAINS OR HOUSE CONNECTIONS. THE APPROVAL OF THESE DRAWINGS WILL CONSTITUTE COMPLIANCE WITH DPW REQUIREMENT PER SECTION 18.114(A) OF THE HOWARD COUNTY CODE.
- PART II - WATER
- ALL WATER MAINS TO BE D.I.P. CLASS 52 UNLESS OTHERWISE NOTED.
 - TOPS OF ALL WATER MAINS SHALL HAVE A MINIMUM OF 3'-6" COVER UNLESS OTHERWISE NOTED.
 - VALVES ADJACENT TO TEES SHALL BE STRAPPED TO TEES.
 - ALL FITTINGS SHALL BE BUTTRESSED OR ANCHORED WITH CONCRETE IN ACCORDANCE WITH THE STANDARD DETAILS UNLESS OTHERWISE PROVIDED FOR ON THE DRAWINGS.
 - FIRE HYDRANTS SHALL BE SET TO THE BURY LINE ELEVATIONS SHOWN ON THE DRAWINGS. ALL FIRE HYDRANTS SHALL BE INSTALLED IN ACCORDANCE WITH STANDARD DETAILS. SOIL AROUND THE FIRE HYDRANT SHALL BE COMPACTED IN ACCORDANCE WITH SECTION 1000 AND 1005 OF THE STANDARD SPECIFICATIONS.
 - THE CONTRACTOR SHALL NOT OPERATE ANY WATER MAIN VALVES ON THE EXISTING WATER SYSTEM.
- PART III - SEWER
- ALL SEWER MAINS SHALL BE D.I.P. OR P.V.C. UNLESS OTHERWISE NOTED.
 - ALL MANHOLES SHALL BE 4'-0" INSIDE DIAMETER UNLESS OTHERWISE NOTED.
 - FORCE MAINS SHALL BE D.I.P. ONLY.
 - MANHOLES SHOWN WITH 12" AND 16" WALLS ARE FOR BRICK MANHOLES ONLY.
 - MANHOLES DESIGNATED W.T. IN PLAN AND PROFILE SHALL HAVE WATERTIGHT FRAME AND COVER, STANDARD DETAIL 65.52. WHERE WATERTIGHT MANHOLE FRAMES AND COVERS ARE USED, SET TOP OF FRAME 1'-6" ABOVE FINISHED GRADE UNLESS OTHERWISE NOTED ON THE DRAWINGS.
 - HOUSE(S) WITH THE SYMBOL "C.N.S." INDICATES THAT THE CELLAR CANNOT BE SERVED.

CONTRACT No. 24-4229-D
 COLUMBIA GATEWAY
 PARCEL N-10
 PLAT No. 14298
 HOWARD COUNTY, MARYLAND
 DEPARTMENT OF PUBLIC WORKS

SEDIMENT CONTROL MEASURES WILL BE IMPLEMENTED IN ACCORDANCE WITH SECTION 219 OF THE SPECIFICATIONS & WITH ROAD DRAWINGS PLAN SDP-05-13; DRAWINGS FOR SEDIMENT & EROSION CONTROL.

REVIEWED FOR HOWARD SOIL CONSERVATION DISTRICT AND MEETS TECHNICAL REQUIREMENT.

Jim Mayler 10/12/04
 SIGNATURE DATE
 U.S.D.A. NATURAL RESOURCES CONSERVATION SERVICE

THIS DEVELOPMENT PLAN IS APPROVED FOR SOIL EROSION AND SEDIMENT CONTROL BY THE HOWARD SOIL CONSERVATION DISTRICT.

APPROVED:
John K. Blanton 10/12/04
 HOWARD S.C.D. DATE

DEPARTMENT OF PUBLIC WORKS
 HOWARD COUNTY, MARYLAND

R. L. Blanton 10-15-04
 CHIEF, BUREAU OF UTILITIES DATE

DEPARTMENT OF PLANNING AND ZONING
 HOWARD COUNTY, MARYLAND

William C. ... 10/12/04
 CHIEF, DEVELOPMENT ENGINEERING DIVISION DATE

GLW GUTSCHICK LITTLE & WEBER, P.A.
 CIVIL ENGINEERS, LAND SURVEYORS, LAND PLANNERS, LANDSCAPE ARCHITECTS
 3909 NATIONAL DRIVE - SUITE 250 - FORTSONVILLE OFFICE PARK
 BURGESSVILLE, MARYLAND 20863
 TEL: 301-421-4024 BAL: 410-380-1820 DC/VA: 301-989-2524 FAX: 301-421-4186



DES: KLP			
DRN: KLP			
CHK: BJM			
DATE: 10/12/04	BY: NO	REVISION: Rev. Sewer Quantities	DATE: 5/11/05

TITLE SHEET
 SCALE: AS SHOWN

600' SCALE MAP NO. 42 BLOCK NO. 12

COLUMBIA GATEWAY
 PARCEL N-10
 PLAT No. 14298
 HOWARD COUNTY, MARYLAND
 ELECTION DISTRICT No. 6
 CONTRACT No. 24-4229-D

SCALE AS SHOWN
 SHEET 1 OF 3

GLW FILE No. 04031