

QUANTITIES				
ITEMS	QUANTITIES ESTIMATED	AS-BUILT		
		QUANTITIES	TYPE	MANUFACTURER/SUPPLIER
8" N. (D.I.P.)	1038 L.F.	1038 L.F.	TYTON JOINT CL. 52 U.S. PIPE & FOUNDRY/HUGHES	
8" 1/2" H.B.	9 EA.	9 EA.	MJ 45° BEND TYLER/HUGHES	
8" 1/2" H.B.	1 EA.	1 EA.	MJ 22 1/2° BEND TYLER/HUGHES	
8" 1/2" T.	2 EA.	2 EA.	MJ TEE TYLER/HUGHES	
8" x 8" F.H.T.	4 EA.	4 EA.	MJ HYD TEE TYLER/HUGHES	
FIRE HYDRANTS	4 EA.	4 EA.	KENNEDY VALVE KENNEDY VALVE/HUGHES	
6" VALVES	4 EA.	4 EA.	GATE VALVE KENNEDY VALVE/HUGHES	
8" VALVES	4 EA.	4 EA.	GATE VALVE KENNEDY VALVE/HUGHES	
6" N. (D.I.P.)	70 L.F.	70 L.F.	TYTON JOINT CL. 52 U.S. PIPE & FOUNDRY/HUGHES	
8" CAP	1 EA.	1 EA.	MJ CAP TYLER/HUGHES	
8" S. (P.V.C.)	955 L.F.	955 L.F.	SDR-35 PIPE JM MANUFACT'G/HUGHES	
MANHOLES	4 EA.	4 EA.		
8" STOPPER	2 EA.	2 EA.		
TYPE "A" DROP CONN	1 EA.	1 EA.		
TYPE "B" DROP CONN	1 EA.	1 EA.		

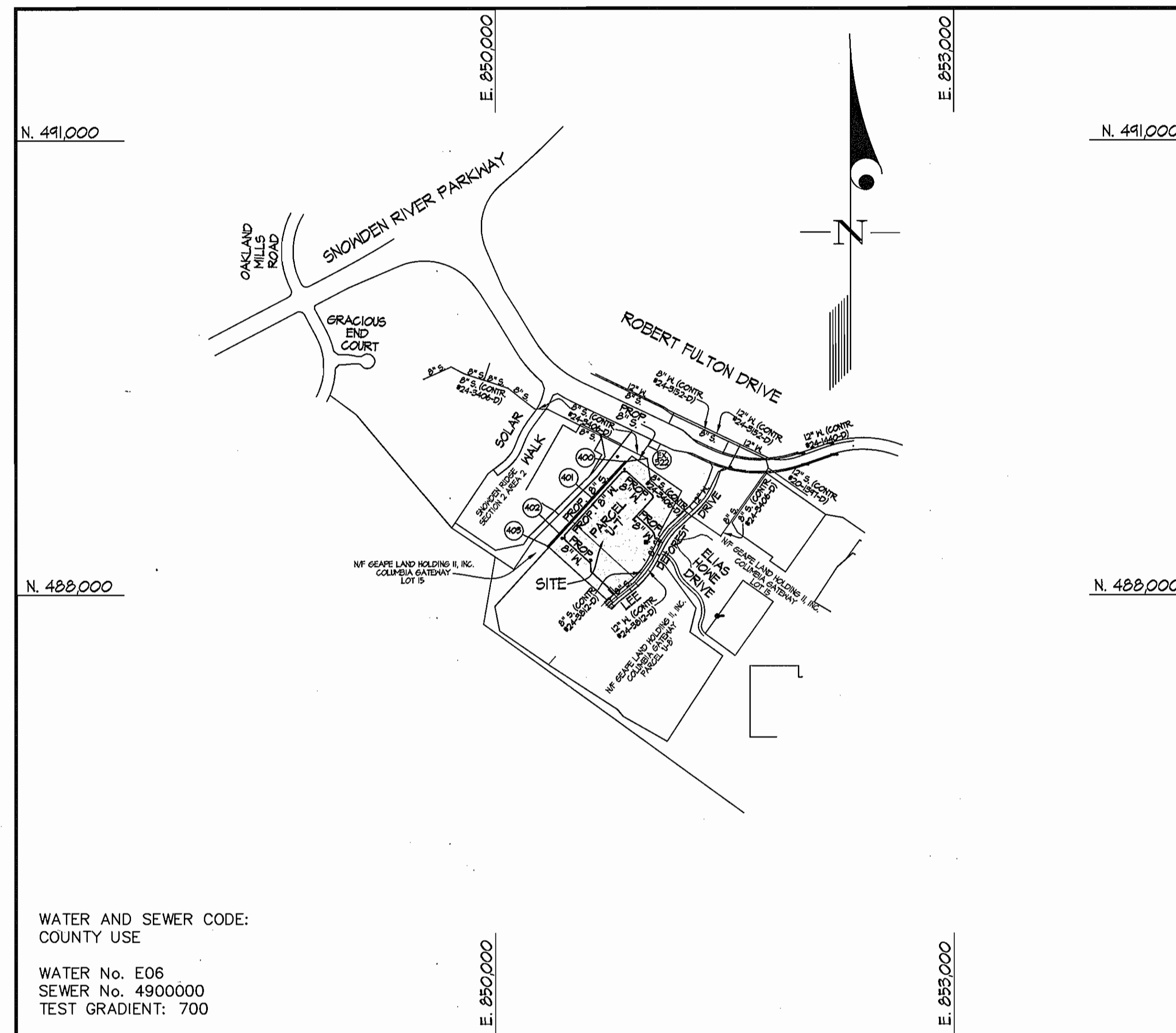
NAME OF UTILITY CONTRACTOR: \_\_\_\_\_

SURVEY AND DRAFTING DIV. CHECKBOX: AS-BUILT DATE: 9-05

OWNER:  
 GEAPE LAND HOLDING II, INC.  
 c/o THE HOWARD RESEARCH AND DEVELOPMENT CORP.  
 10275 LITTLE PATUXENT PARKWAY  
 COLUMBIA, MARYLAND 21044

CONTRACT PURCHASER:  
 LIFE TIME FITNESS, INC.  
 6442 CITY WEST PARKWAY  
 EDEN PRAIRIE, MN 55344

ASSOCIATED SUBDIVISION FILE NUMBER: F 04-164



WATER AND SEWER CODE:  
 COUNTY USE  
 WATER No. E06  
 SEWER No. 4900000  
 TEST GRADIENT: 700

VICINITY MAP  
 SCALE: 1"=600'

TYPE OF BUILDING	COMMERCIAL
NUMBER OF UNITS	N/A
NUMBER OF S.H.C.'s	1
NUMBER OF W.H.C.'s	1
DRAINAGE AREA	LITTLE PATUXENT
TREATMENT PLANT	LITTLE PATUXENT WATER RECLAMATION PLANT

GENERAL NOTES

- PART I
- Approximate locations of existing mains are shown. The contractor shall take all necessary precautions to protect existing mains and services and maintain uninterrupted supply. Any damage incurred shall be repaired immediately to the satisfaction of the Engineer at the contractor's expense.
  - All horizontal controls are based on Maryland State Coordinates, NAD 83/91.
  - All vertical controls are based on NAVD 88.
  - All pipe elevations shown are invert elevations unless otherwise noted on the plans.
  - Clear all utilities by a minimum of 12". Clear all poles by 5'-0" minimum or tunnel as required unless otherwise noted. The owner has contacted the utility companies and has made arrangements for bracing of poles as shown on the drawings. In the event the contractor's work requires the bracing of additional poles, any cost incurred by the owner for the bracing of additional poles or damages shall be deducted from monies owed the contractor. The contractor shall coordinate with the utility companies to schedule the bracing of the poles.
  - For details not shown on the drawings, and for materials and construction methods use Howard County Design Manual, Volume IV, Standard Specifications and Details for Construction (Latest Edition). The contractor shall have a copy of Volume IV on the job.
  - Where test pits have been made on existing utilities, they are noted by the symbol (C.N.S.) the locations of the test pit. A note or notes containing the results of the test pit or pits is included on the drawings. Existing utilities in the vicinity of the proposed work for which test pits have not been dug shall be located by the contractor two weeks in advance of construction operations at his own expense.
  - The contractor shall notify the following utility companies or agencies at least (5) working days before starting work shown on these plans:
 

AT&T	1-800-252-1133
BGE (Contractor Services)	410-850-4620
BGE (Under Ground Damage Control)	410-187-9068
Bureau of Utilities	410-313-4900
Colonial Pipeline Co.	410-745-1390
Miss Utility	1-800-257-7777
State Highway Administration	410-531-5533
Verizon	1-800-743-0033/410-224-9210
  - Trees and shrubs are to be protected from damage to maximum extent. Trees and shrubs located within the construction strip are not to be removed or damaged by the contractor.
  - The contractor shall remove trees, stumps and roots along line of excavation. Payment for such removal shall be included in the unit price bid for construction of the main.
  - The contractor shall notify the Bureau of Highways, Howard County, at 410-313-2450 at least five (5) working days before any open cutting or boring/jacking of any County road or boring/jacking operation on County roads for laying water/sewer mains or house connections. The approval of these drawings will constitute compliance with DPM requirement per Section 18.114(a) of the Howard County Code.
- PART II - WATER
- All water mains to be D.I.P. Class 52 unless otherwise noted.
  - Tops of all water mains shall have a minimum of 3'-6" cover unless otherwise noted.
  - Valves adjacent to tees shall be strapped to tees.
  - All fittings shall be buttressed or anchored with concrete in accordance with the Standard Details unless otherwise provided for on the drawings.
  - Fire hydrants shall be set to the bury line elevations shown on the drawings. All fire hydrants shall be installed in accordance with Standard Details. Soil around the fire hydrant shall be compacted in accordance with Section 1000 and 1005 of the Standard Specifications.
  - The contractor shall not operate any water main valves on the existing water system.
- PART III - SEWER
- All sewer mains shall be D.I.P. or P.V.C. unless otherwise noted.
  - All manholes shall be 4'-0" inside diameter unless otherwise noted.
  - Force mains shall be D.I.P. only.
  - Manholes shown with 12" and 16" walls are for brick manholes only.
  - Manholes designated W.T. in plan and profile shall have watertight frame and cover, Standard Detail 65.52. Where watertight manhole frames and covers are used, set top of frame 1'-6" above finished grade unless otherwise noted on the drawings.
  - House(s) with the symbol "C.N.S." indicates that the cellar cannot be served.

CONTRACT No. 24-4223-D  
 GATEWAY COMMERCE CENTER  
 PARCELS 'U-7' & LOT 15

HOWARD COUNTY, MARYLAND  
 DEPARTMENT OF PUBLIC WORKS

AS BUILT  
 DATE: SEPT. 2005

Sediment Control Measures will be implemented in accordance with Section 219 of the Specifications & with Site Development Plans SDP 04-137; Drawings for Sediment & Erosion Control.

REVIEWED FOR HOWARD SOIL CONSERVATION DISTRICT AND MEETS TECHNICAL REQUIREMENT.

*Jim Meyer* 9/27/04  
 SIGNATURE DATE  
 U.S.D.A. NATURAL RESOURCES CONSERVATION SERVICE

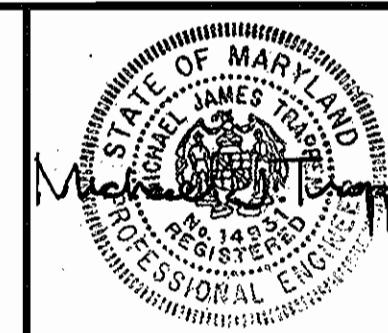
THIS DEVELOPMENT PLAN IS APPROVED FOR SOIL EROSION AND SEDIMENT CONTROL BY THE HOWARD SOIL CONSERVATION DISTRICT.

*John P. ...* 9/27/04  
 APPROVED DATE  
 HOWARD S.C.D.

DEPARTMENT OF PUBLIC WORKS  
 HOWARD COUNTY, MARYLAND

DEPARTMENT OF PLANNING AND ZONING  
 HOWARD COUNTY, MARYLAND

GLW GUTSCHICK LITTLE & WEBER, P.A.  
 CIVIL ENGINEERS, LAND SURVEYORS, LAND PLANNERS, LANDSCAPE ARCHITECTS  
 3909 NATIONAL DRIVE - SUITE 250 - BURTONSVILLE OFFICE PARK  
 BURTONSVILLE, MARYLAND 20866  
 TEL: 301-421-4024 BAL: 410-880-1820 DC/VA: 301-989-2524 FAX: 301-421-4186



DES: MSJ			
DRN: MSJ			
CHK: MJT			
DATE: 9/20/2004	BY	NO	REVISION

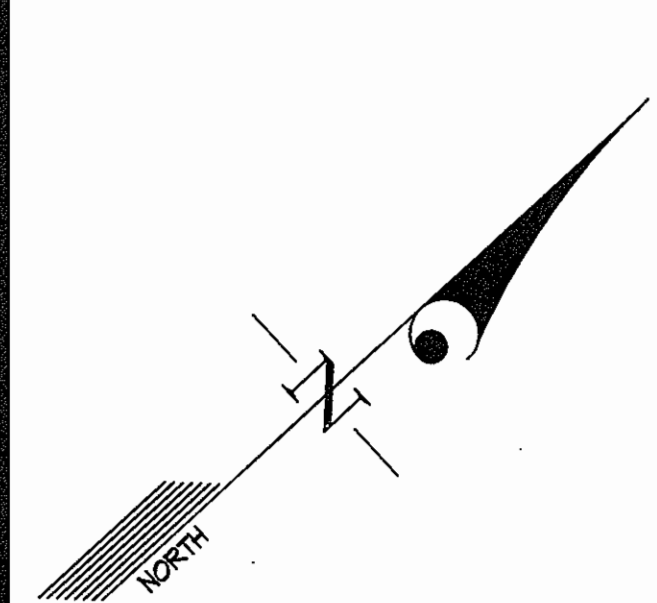
TITLE SHEET	SCALE: AS SHOWN
600' SCALE MAP NO. 42	BLOCK NO. 12

COLUMBIA GATEWAY  
 PARCEL "U-7" & LOT 15  
 HOWARD COUNTY, MARYLAND  
 ELECTION DISTRICT No. 6  
 CONTRACT No. 24-4223-D

GLW FILE No. 04008

SCALE AS SHOWN

SHEET 1 OF 3



**AS-BUILTS (WATER VALVES)**

VALVES	FROM	TO	DISTANCE	REMARKS
6" FHV 10+25	FH 10+25	6" VALVE I-117	10.8'	LINE 'B'
	I-117	6" VALVE I-116	65.3'	
8" VALVE 2+10 OR 15+93 'B'	FH 10+25	8" VALVE I-116	30.1'	LINE 'A'
	I-116	8" VALVE I-110	30.5'	
6" FHV 11+51	FH 11+51	6" VALVE I-102	10.5'	LINE 'B'
	I-102	6" VALVE MH-101	64'	
8" VALVE (3 VALVES) 0+32 'T'	I-104	8" VALVE SMH-401	40.1'	LINE 'B'
	I-105	8" VALVE I-105	91'	
6" FHV 5+26	FH 5+26	6" VALVE SMH-402	17.1'	LINE 'B'
	I-111	6" VALVE I-111	40.5'	
	I-111	6" VALVE I-111	77.6'	
6" FHV 2+87	FH 2+87	6" VALVE I-112	13.1'	LINE 'B'
	I-112	6" VALVE I-121	55.5'	
	I-121	6" VALVE I-121	71'	

**MANHOLE INFORMATION**

LOCATION	COORDINATES
MANHOLE 400	N 544713 E 1363282
MANHOLE 401	N 544462 E 1363036
MANHOLE 402	N 544220 E 1362833
MANHOLE 403	N 544152 E 1362753
MANHOLE 401 STB	N 544451 E 1363064
MANHOLE 403 STB	N 544114 E 1362754

**FITTING INFORMATION**

WATERLINE "A"		
LOCATION	FITTING	COORDINATES
MM STA. 0+03	8" 1/8 HB	N 544182 E 1363442
MM STA. 0+47	8" 1/8 HB	N 544224 E 1363420

**CRIMPING INFORMATION**

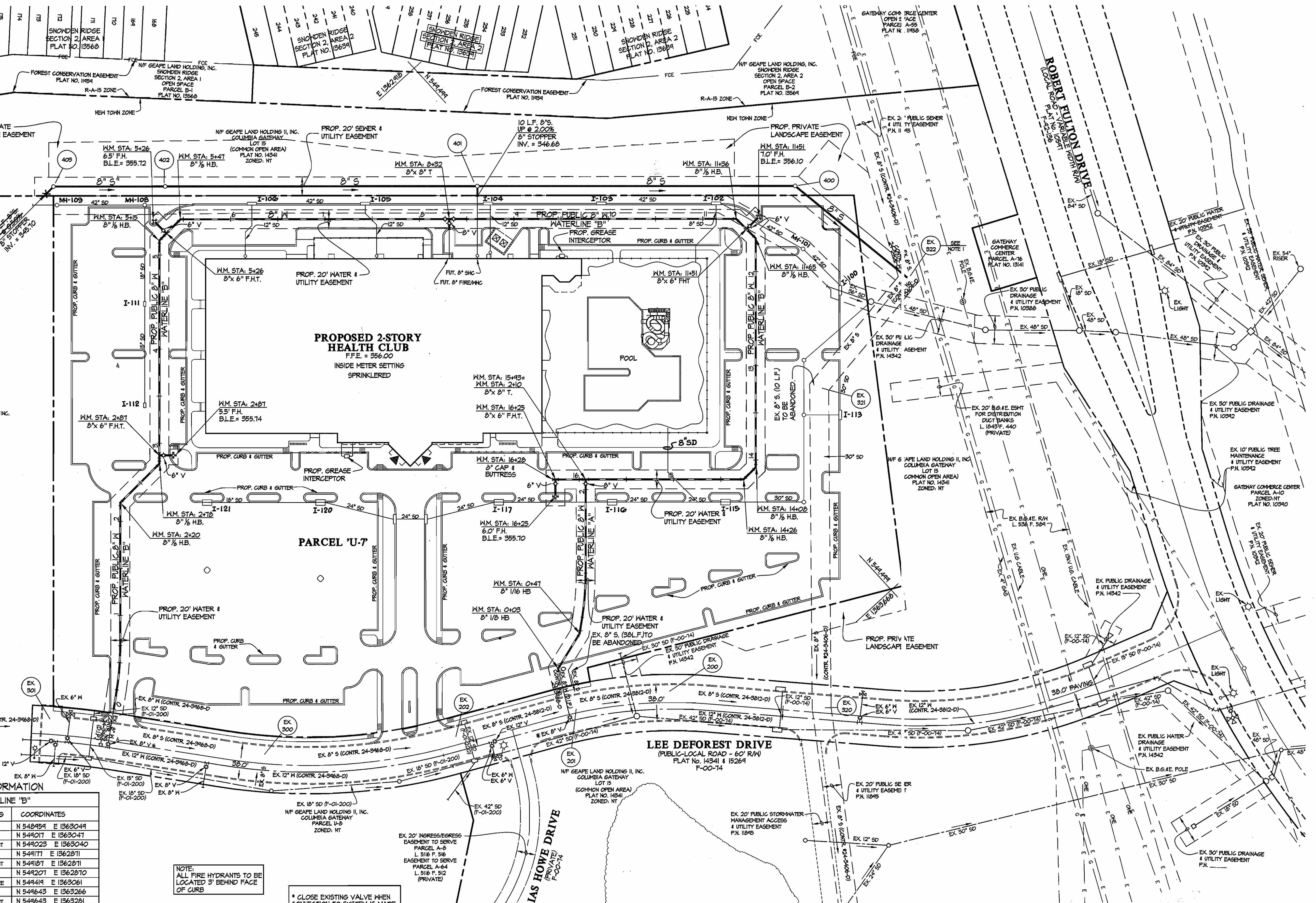
WATERLINE "A"	
BEGIN 300' CRIMPING RADIUS	END 300' CRIMPING RADIUS
MM STA. 0+44	MM STA. 1+11

**CRIMPING INFORMATION**

WATERLINE "B"	
BEGIN 300' CRIMPING RADIUS	END 300' CRIMPING RADIUS
MM STA. 0+21	MM STA. 0+68

**FITTING INFORMATION**

WATERLINE "B"		
LOCATION	FITTING	COORDINATES
MM STA. 2+20	8" 1/8 HB	N 544454 E 1363044
MM STA. 2+18	8" 1/8 HB	N 544201 E 1363041
MM STA. 2+81	8" 6" FHT	N 544023 E 1363040
MM STA. 5+15	8" 1/8 HB	N 544171 E 1362871
MM STA. 5+26	8" 6" FHT	N 544181 E 1362871
MM STA. 5+47	8" 1/8 HB	N 544201 E 1362870
MM STA. 8+32	8" 6" TEE	N 544411 E 1363061
MM STA. 11+36	8" 1/8 HB	N 544643 E 1363286
MM STA. 11+51	8" 6" FHT	N 544643 E 1363281
MM STA. 11+65	8" 1/8 HB	N 544644 E 1363245
MM STA. 14+08	8" 1/8 HB	N 544481 E 1363475
MM STA. 14+26	8" 1/8 HB	N 544463 E 1363476
MM STA. 15+43	8" 6" TEE	N 544334 E 1363363
MM STA. 16+25	8" 6" FHT	N 544316 E 1363342
MM STA. 16+28	8" CAP	N 544313 E 1363334



NOTE: ALL FIRE HYDRANTS TO BE LOCATED 3' BEHIND FACE OF CURB

\* CLOSE EXISTING VALVE WHEN CONNECTION TO SYSTEM IS MADE.

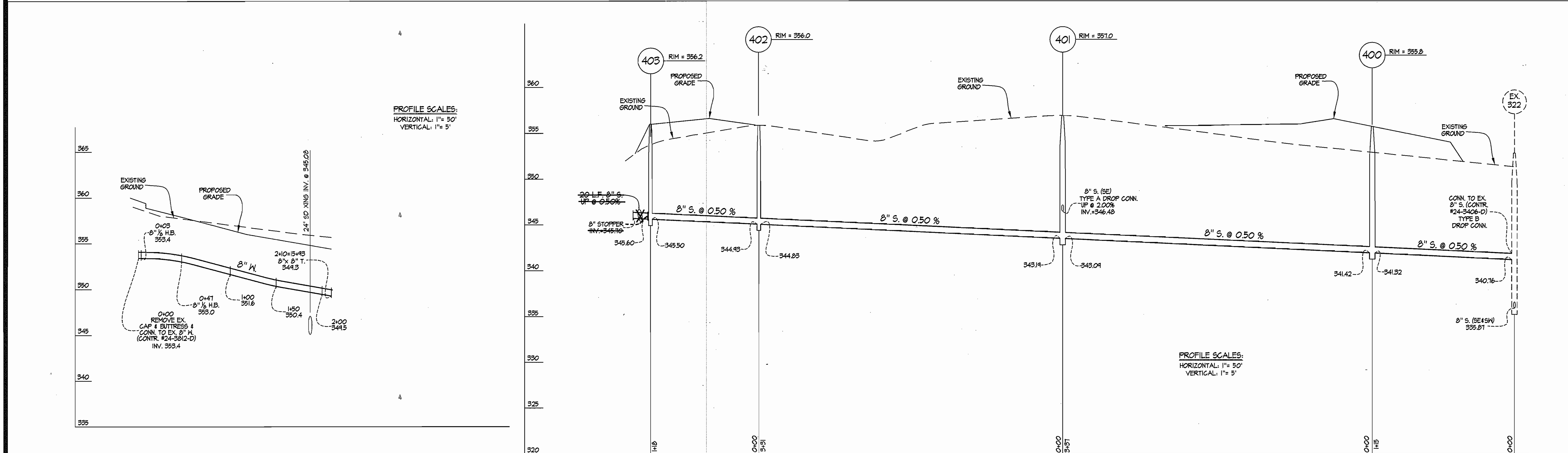
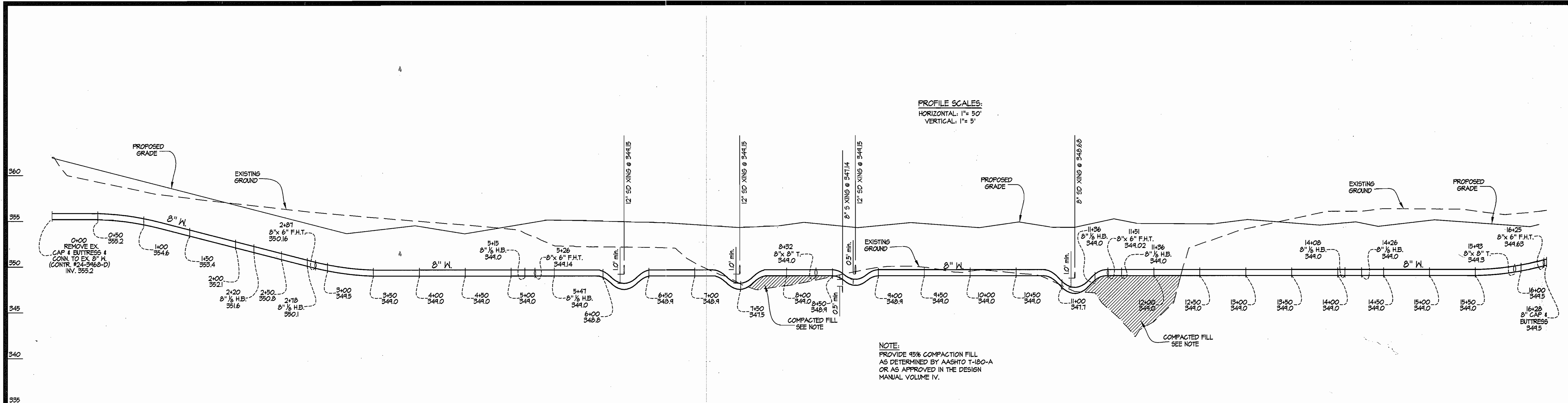
NOTE: CORE DRILL MANHOLE & RECHANNEL BENCH FOR NEW CONNECTION

**AS BUILT**  
DATE: SEPT. 2005

L:\CADD\DRAWINGS\04008\WS\04008\WS2.dwg 09/20/2004 11:53:47 AM EDT

DEPARTMENT OF PUBLIC WORKS HOWARD COUNTY, MARYLAND Robert A. Berger 10-8-04 CHIEF, BUREAU OF UTILITIES DATE	DEPARTMENT OF PLANNING AND ZONING HOWARD COUNTY, MARYLAND 10/1/04 CHIEF, DEVELOPMENT ENGINEERING DIVISION DATE	<b>GLW GUTSCHICK LITTLE &amp; WEBER, P.A.</b> CIVIL ENGINEERS, LAND SURVEYORS, LAND PLANNERS, LANDSCAPE ARCHITECTS 3909 NATIONAL DRIVE - SUITE 250 - BURTONTVILLE OFFICE PARK BURTONTVILLE, MARYLAND 20868 TEL: 301-421-4024 FAX: 410-880-1820 DC/VA: 301-889-2524 FAX: 301-421-4186		DES: WSJ DRN: WSJ CHK: MJT DATE: 9/20/2004	WATER AND SEWER PLAN SCALE: 1"=50' 600' SCALE MAP NO. 42 BLOCK NO. 12	<b>COLUMBIA GATEWAY</b> PARCEL 'U-7' & LOT 15 HOWARD COUNTY, MARYLAND ELECTION DISTRICT No. 6 CONTRACT No. 24-4223-D	SCALE 1"=50' SHEET 2 OF 3
--	---	--	--	---	---	--	------------------------------------

L:\CADD\DRAWINGS\04008\WS\04008F\WS3.dwg 09/20/2004 11:55:40 AM EDT



**AS BUILT**  
DATE: SEPT. 2005

DEPARTMENT OF PUBLIC WORKS  
HOWARD COUNTY, MARYLAND

*R. H. Bump* 10-9-04  
CHIEF, BUREAU OF UTILITIES DATE

DEPARTMENT OF PLANNING AND ZONING  
HOWARD COUNTY, MARYLAND

*[Signature]* 10/17/04  
CHIEF, DEVELOPMENT ENGINEERING DIVISION DATE

**GLW GUTSCHICK LITTLE & WEBER, P.A.**  
CIVIL ENGINEERS, LAND SURVEYORS, LAND PLANNERS, LANDSCAPE ARCHITECTS  
3909 NATIONAL DRIVE - SUITE 250 - BURTONSVILLE OFFICE PARK  
BURTONSVILLE, MARYLAND 20866  
TEL: 301-421-4024 BAL: 410-880-1820 DC/VA: 301-988-2524 FAX: 301-421-4186



DES: W&J				
DRN: W&J				
CHK: MJT				
DATE: 9/20/2004	BY	NO	REVISION	DATE

PROFILE SHEET  
SCALE: AS SHOWN

600' SCALE MAP NO. 42 BLOCK NO. 12

**COLUMBIA GATEWAY**  
PARCELS U-7 & LOT 15

HOWARD COUNTY, MARYLAND  
ELECTION DISTRICT No. 6  
CONTRACT No. 24-4223-D

SCALE AS SHOWN  
SHEET 3 OF 3