

SHEET INDEX	
SHEET No.	SHEET
1	COVER SHEET
2	WATER PLAN
3	WATER PROFILE
4	WATER PLAN

WATER MAIN PLAN

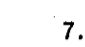
SCOTS GLEN NORTH

5th ELECTION DISTRICT, TAX MAP 35, GRID 17

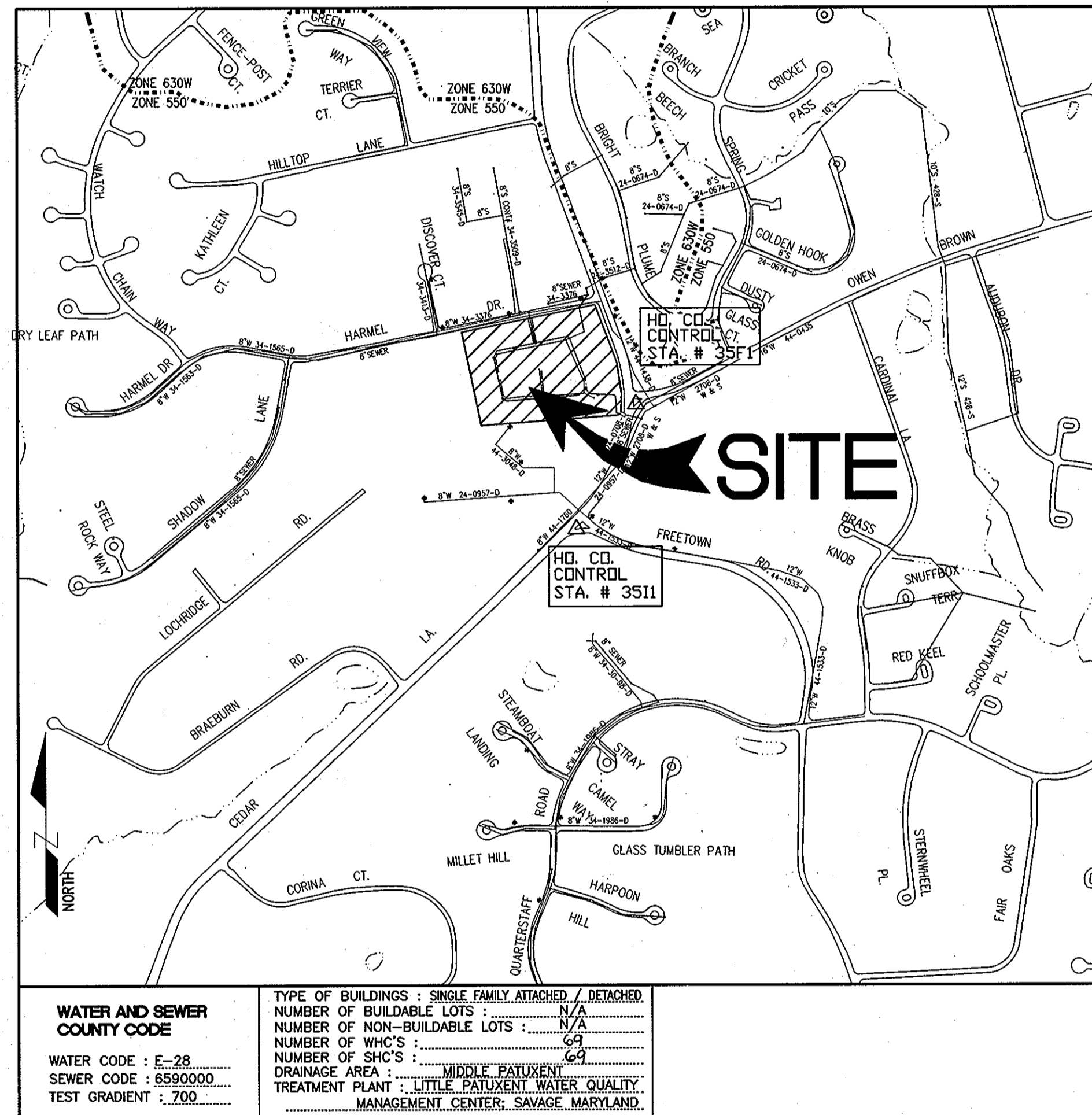
HOWARD COUNTY, MARYLAND 21044

GENERAL NOTES :

PART I

- Approximate location of existing mains are shown. The contractor shall take all necessary precautions to protect existing mains and services and maintain uninterrupted supply. Any damage incurred shall be repaired immediately to the satisfaction of the Engineer at the Contractor's expense.
- All horizontal controls are based on Maryland State Coordinates [North American Datum of 1983 (NAD '83)].
- All vertical controls are based on MVD 88.
- All pipe elevations shown are invert elevations unless otherwise noted on the plans.
- Clear all utilities by a minimum of 12". Clear all poles by 5'-0" minimum or tunnel as required. The owner has contacted the utility companies and has made arrangements for bracing of additional poles; any cost incurred by the owner for bracing of additional poles or damages shall be deducted from monies owed the contractor. The contractor shall coordinate with the utility companies to schedule the bracing of the poles.
- For details not shown on the drawings, and for materials and construction methods, use Howard County Design Manual, Volume IV, Standard Specifications and Detail for Construction (Latest Edition). The contractor shall have a copy of Volume IV on the job.
- Where test pits have been made on existing utilities, they are noted by the symbol  at the location of the test pit. A note or notes containing the results of the test pit or pits is included on the drawings. Existing utilities in the vicinity of the proposed work for which test pits have not been dug shall be located by the contractor two weeks in advance of construction operations at his own expense.
- Contractor shall notify the following utility companies or agencies at least five (5) working days before starting work shown on these plans:

AT&T	1-800-292-1133
BGE Contractor Services	410-850-4620
BGE Under Ground Damage Control	410-291-4607
Bureau of Utilities	410-313-4900
Colonial Pipeline Company	410-795-1390
Miss Utility	1-800-257-7777
State Highway Administration	410-531-5533
Verizon	1-800-743-0033 / 410-224-9210
- Trees and shrubs are to be protected from damage to maximum extent. Trees and shrubs located within the construction strip are not to be removed or damaged by the contractor.
- Contractor shall remove trees, stumps and roots along line of excavation. Payment for such removal shall be included in the unit price bid for construction of the main.
- The contractor shall notify the Bureau of Highways, Howard County at 410-313-7450 at least five (5) working days before any open cutting or boring/jacking of any County road for laying water/sewer mains or house connections. The approval of these drawings will constitute compliance with the DPW requirements per Section 16.114(a) of the Howard County Code.
- All water mains to be D.I.P. Class 52 unless otherwise noted.
- Tops of all water mains to have a minimum of 3'-6" cover unless otherwise noted.
- Valves adjacent to tees shall be strapped to tees.
- All fittings shall be buttressed or anchored with concrete in accordance with the Standard Details unless otherwise provided for on the drawings.
- Fire hydrants shall be set to the bury line elevations shown on the drawings. All fire hydrants shall be restrained and buttressed with concrete in accordance with the Standard Details. Soil around the fire hydrant shall be compacted in accordance with Section 1000 and 1005 of the Standard Specifications.
- The contractor shall not operate any water main valves on the existing water system.
- All water house connections shall be for inside meter setting unless otherwise noted on plans or in specifications.
- For sprinkler system for all townhomes or multi-family dwelling units SMALL have a 1/2" WATER connection with a 3/4" meter.
- No improvements shall be constructed or placed within the Public Water and Utility Easements which will impede or hinder access to the public water mains. Improvements such as air-conditioning units, fireplace chimneys, decks, fencing, foundation planting and trees shall not be placed within the easements.



ITEMS	QUANTITIES		AS-BUILT	
	QUANTITIES ESTIMATED		QUANTITIES	TYPE MANUF./SUPPLIER
8" WATER	2010.2 L.F.	2011 L.F.	DIP	ATLANTIC
6" WATER	244.5 L.F.	245 L.F.		"
1" WHC	1110 L.F.	1,111 L.F.		"
FIRE HYDRANTS	4 EACH	4 EA		BELAIR RD SUPPLY
8" VALVES	7 EACH	7 EA		" " "
6" VALVES	5 EACH	5 EA		" " "
8"x8" TEE	3 EACH	3 EA		" " "
8"x6" TEE	5 EACH	5 EA		" " "
12"x8" TAPPING SLEEVE	1 EACH	2 EA		" " "
1 1/2" DRAIN (HO. CO. STD. DETAIL W4.12)	1 EACH	1 EA		" " "
MANHOLE	1 EACH	1		" " "
8" SEWER	80 L.F.	80 L.F.		" " "

NAME OF UTILITY CONTRACTOR: UTILITIES UNLIMIT
 SURVEY AND DRAFTING DIVISION AS-BUILT DATE: 4/4/00

WATER AND SEWER COUNTY CODE
 WATER CODE : E-28
 SEWER CODE : 6590000
 TEST GRADIENT : 700

TYPE OF BUILDINGS : SINGLE FAMILY ATTACHED / DETACHED
 NUMBER OF BUILDABLE LOTS : N/A
 NUMBER OF NON-BUILDABLE LOTS : N/A
 NUMBER OF WHC'S : 69
 NUMBER OF SHC'S : 64
 DRAINAGE AREA : MIDDLE TO LOW
 TREATMENT PLANT : LITTLE PATUXENT WATER QUALITY MANAGEMENT CENTER, SAVAGE, MARYLAND.

VICINITY MAP
 SCALE : 1" = 600'

Professional Certification. I hereby certify that these documents were prepared or approved by me, and that I am a duly licensed professional engineer under the laws of the State of Maryland.
 License No. 28569, Expiration Date: 7/22/2011



FOR REVISION BY BENCHMARK ENGINEERING INC. #3

CONTRACTOR SHALL NOTIFY THE FOLLOWING UTILITY COMPANIES OR AGENCIES AT LEAST FIVE WORKING DAYS BEFORE STARTING WORK SHOWN ON THESE PLANS	
STATE HIGHWAY ADMINISTRATION	410-531-5533
BALTIMORE GAS & ELECTRIC CO.	410-850-4620
CONTRACTOR SERVICES	410-787-9068
BALTIMORE GAS & ELECTRIC CO. UNDERGROUND DAMAGE CONTROL	410-795-1390
MISS UTILITY	1-800-257-7777
COLONIAL PIPELINE CO	410-795-1390
HOWARD COUNTY DEPT. OF PUBLIC WORKS	410-313-4900
BUREAU OF UTILITIES	410-313-2640
HO. CO. ENVIRONMENTAL HEALTH DPT	

REVIEWED FOR HOWARD SCD AND MEETS TECHNICAL REQUIREMENTS
Jim Morgan 10/25/04
 U.S. F.A. - NATURAL RESOURCES CONSERVATION SERVICE

THIS DEVELOPMENT PLAN IS APPROVED FOR SOIL EROSION AND SEDIMENT CONTROL BY THE HOWARD SOIL CONSERVATION DISTRICT.
John R. Blanton 10/25/04
 HOWARD SCD

OWNER/DEVELOPER : MOUNT VIEW, LLC.
 6258 CARDINAL LA.
 COLUMBIA, MD. 21044

DEPARTMENT OF PUBLIC WORKS
 HOWARD COUNTY, MARYLAND
Rita B... 11-3-04
 CHIEF, BUREAU OF UTILITIES

DEPARTMENT OF PLANNING AND ZONING
 HOWARD COUNTY, MARYLAND
...
 CHIEF, DEVELOPMENT ENGINEERING DIVISION

PREPARED BY :
American Land Development and Engineering, Inc.
 10749 BIRMINGHAM WAY WOODSTOCK, MD. 21163
 TEL. (410) 465-7903 FAX. (410) 465-3845



DES. :	DW/AG	DATE	REVISIONS
DRN. :	AVG		
CHK. :	DW		
DATE :	10-08-04		
BY :	NO.		

COVER SHEET
 600' SCALE MAP No. 35
 BLOCK No. 17

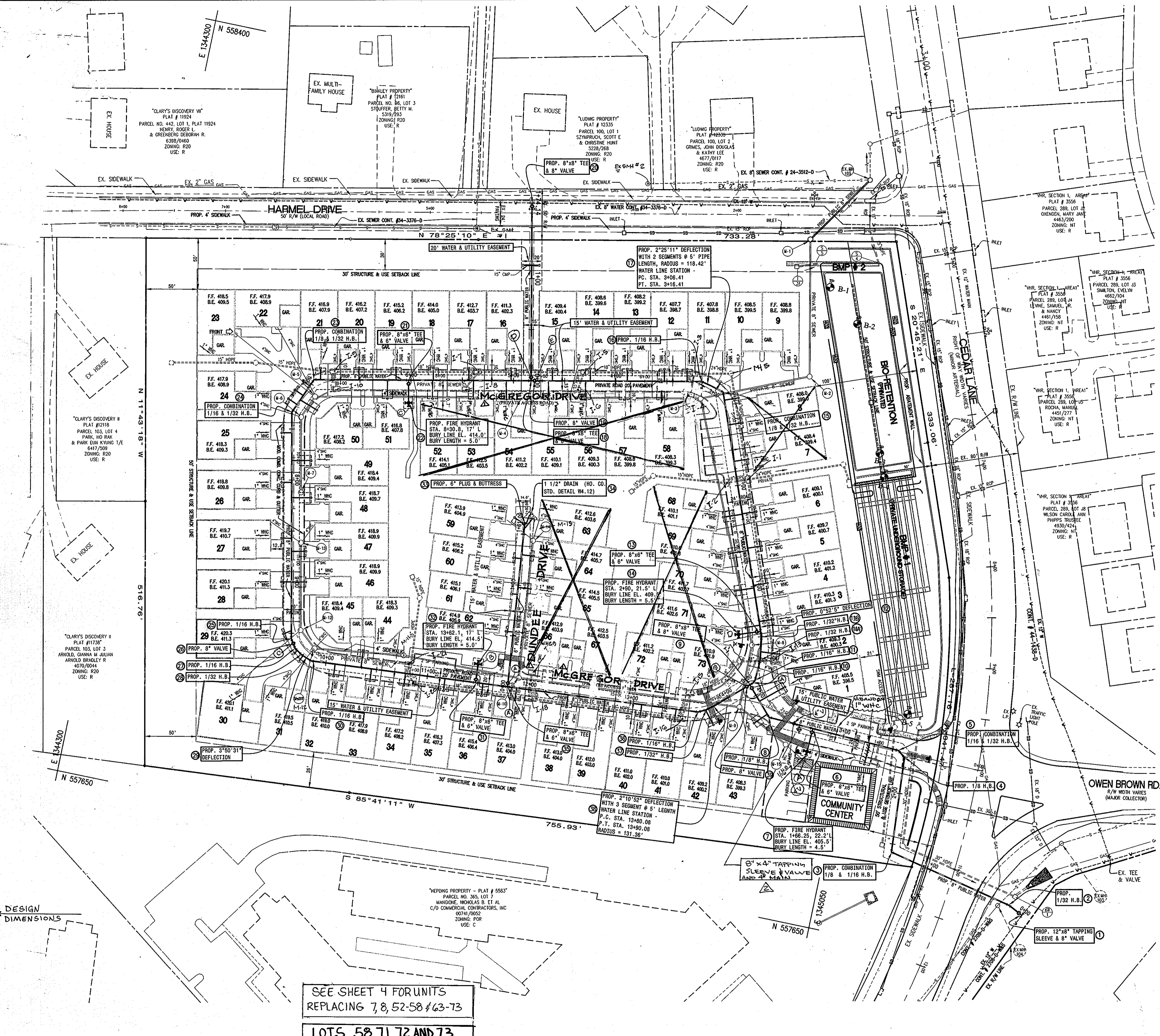
SCOTS GLEN NORTH
 BUILDABLE BULK PARCEL "A" AND COMMUNITY CENTER
 PLANNED SENIOR COMMUNITY (PSC) - AGE RESTRICTED ADULT HOUSING
 A RESUBDIVISION OF CEDAR ACRES, BLOCK "C", LOTS 1, 2, 2A, 2B AND 3
 5th ELECTION DISTRICT, TAX MAP 35, GRID 17, HOWARD COUNTY, MD. 21044

CONTRACT NO. : 34-4219-D
 SDP No. 04-124

SCALE : AS SHOWN
 SHEET NO. 1 OF 4

LOT #	TO	TO	TO
1	M-9=42'	M-8=53'	1-B=27'
2	M-9=06'	M-8=28'	1-B=9'
3	M-8=32'	G-V=21'	FHD=37'
4	M-8=03'	G-V=50'	SOMH=58'
5	FH=89'	G-V=84'	1-1=07'
6	1-1=33'	1-2=40'	WHC LOT 5=25'
7A	M-3=37'	1-2=85'	SOMH=26'
8	M-3=27'	1-4=47'	SOMH=26'
9	M-3=25'	1-4=32'	SOMH=14'
10	M-3=21'	1-3=22'	SOMH=44'
11	M-3=45'	1-2=34'	SOMH=00'
12	M-3=77'	1-4=06'	1-3=05'
13	1-5=0'	1-0=23'	M-4=74'
14	M-3=31'	1-0=33'	M-4=43'
15	M-4=30'	1-7=10'	1-8=43'
16	M-4=59'	1-7=10'	G-V=21'
17	1-7=24'	1-8=38'	G-V=20'
18	1-0=01'	1-10=05'	G-V=20'
19	1-0=25'	1-10=30'	M-5=22'
20	1-2=14'	1-10=20'	M-5=21'
21	M-5=20'	M-6=25'	1-9=22'
22	M-5=21'	M-6=27'	1-10=41'
23	M-5=20'	M-6=23'	1-10=40'
24	M-5=50'	M-6=25'	M-7=06'
25	M-5=00'	M-6=06'	M-7=20'
26	M-7=49'	M-14=20'	M-13=02'
27	M-14=20'	M-13=17'	M-12=31'
28	M-13=25'	M-12=23'	G-V=11'
29	M-13=21'	M-12=20'	G-V=10'
30	M-11=71'	M-12=24'	M-13=55'
31	M-11=42'	M-12=02'	1-20=41'
32	1-20=8'	1-21=20'	M-11=30'
33	1-20=23'	1-21=41'	FH=34'
34	FH=20'	M-10=21'	1-18=40'
35	M-10=20'	1-18=14'	1-19=32'
36	M-10=20'	1-18=20'	1-19=20'
37	M-10=20'	1-18=20'	1-19=20'
38	M-10=20'	1-18=20'	1-19=20'
39	M-10=20'	1-18=20'	1-19=20'
40	M-10=20'	1-18=20'	1-19=20'
41	M-10=20'	1-18=20'	1-19=20'
42	M-10=20'	1-18=20'	1-19=20'
43	M-10=20'	1-18=20'	1-19=20'
44	M-11=40'	M-12=47'	1-20=58'
45	M-11=08'	M-12=23'	M-13=43'
46	M-13=47'	M-14=22'	WHC LOT 41=30'
47	M-13=78'	M-14=10'	WHC LOT 40=30'
48	M-14=46'	M-7=7'	WHC LOT 43=30'
49	M-7=33'	M-6=44'	WHC LOT 42=30'
50	M-6=17'	M-5=14'	1-10=20'
51	1-9=57'	1-10=50'	FHD=22'
52A	1-7=24'	1-8=13'	FHD=24'
52B	M-4=45'	1-8=13'	1-7=27'
54A	M-4=14'	1-8=41'	1-7=27'
59A	1-5=20'	1-6=18'	M-4=03'
59B	M-3=75'	1-2=25'	1-4=74'
59C	M-3=28'	1-2=28'	1-4=22'
59D	M-13=27'	WHC LOT 35	WHC LOT 30=20'
60	M-13=27'	WHC LOT 35	WHC LOT 30=20'
61	M-14=57'	1-19=72'	WHC LOT 30=20'
62	M-10=48'	1-19=48'	WHC LOT 30=20'
63A	M-13=23'	WHC LOT 35	WHC LOT 30=20'
63B	M-15=19'	WHC LOT 35	WHC LOT 30=20'
64A	M-10=88'	M-15=47'	WHC LOT 4=32'
64B	1-16=94'	1-17=02'	1-18=70'
64C	1-2=34'	1-1=03'	WHC LOT 30=20'
64D	M-8=03'	G-V=81'	FHD=70'
64E	M-8=50'	1-14=08'	FHD=43'
65A	1-15=11'	1-16=31'	M-9=00'

TSV #1	EXH 104=23'	EW 1=18'	BH 109=80'
FH A	G-V=20'	A-V=19'	M-16=23'
G-V	FH A=20'	A-V=18'	M-16=24'
A-V	M-16=20'	G-V=18'	FH A=19'
B-V A	M-3=23'	M-8=43'	1-12=25'
B-V B	M-3=22'	M-8=40'	1-12=25'
G-V A	M-10=21'	1-19=23'	1-18=23'
FH B	G-V=17'	1-19=42'	1-20=27'
G-V	FH=17'	1-19=50'	1-20=24'
B-V C	M-12=22'	M-13=13'	WHC LOT 30=12'
FH C	G-V=18'	1-10=02'	1-8=58'
G-V	FH=18'	1-10=20'	1-8=57'
B-V D	1-8=05'	1-7=52'	M-4=24'
B-V E	M-8=23'	1-6=45'	1-5=48'
TSV #2	EXH 1=59'	EXH 2=115'	
FH D	G-V=20.8'	M-8=31.6'	1-14=34.4'
G-V	FH=15'	M-8=17'	1-14=26'
1 1/2" DR	M-15=27'	WHC LOT 6=5'	WHC LOT 5=17'
FH 4			
G-V 5	4=FH VAL	1=MAIN LINE	
B-V 7			
A-V 1			
TAPPING	SLEEVES=2		



FOR REVISION BY BEAMCHAM
ENGINEERING, INC. #4, 5

STATE OF MARYLAND
Professional Engineer
Professional Certificate No. 28599
Expiration Date: 1/22/20

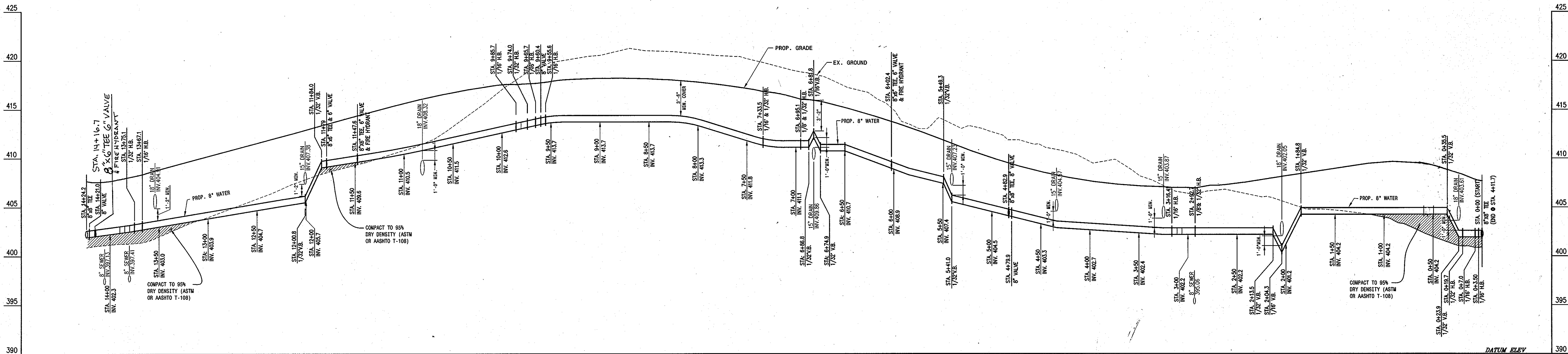
Professional Certificate No. 28599 hereby certify that these documents were prepared or approved by me, and that I am a duly licensed professional engineer under the laws of the State of Maryland.

NO.	FIXTURE	ROAD @ STATION	OFFSET
1	12"x8" TAPPING SLEEVE & 8" VALVE	N 557704.8523	E 1345251.1258
2	1/32" H.B.	N 557711.8963	E 1345236.4718
3	COMBINATION 1/8" & 1/16" H.B.	STA. 0+64.02	97.45'L
4	1/8" H.B.	STA. 0+72.68	4.32'L
5	COMBINATION 1/16" & 1/32" H.B.	STA. 0+80.04	1.15'R
6	8"x6" TEE & 6" VALVE	STA. 1+66.25	2.83'R
7	FIRE HYDRANT BURY LINE EL. 405.50'	STA. 1+66.25	20.2'L
8	1/8" H.B.	STA. 16+57.69	8.22'R
9	8"x8" TEE & 8" VALVE	STA. 2+39.21	11.37'L
10	1/16" H.B.	STA. 2+40.0	7.99'L
11	1/16" H.B.	STA. 2+42.0	5.28'L
11A	1/32" H.B.	STA. 2+60.32	1.8'R
11B	1/32" H.B.	STA. 2+82.96	0.83'R
12	DEFLECTION ANGLE 0°52'55"	STA. 2+92.87	0'
13	8"x6" TEE & 6" VALVE	STA. 2+58.50	0.18'R
14	FIRE HYDRANT BURY LINE EL. 409.50'	STA. 2+58.50	21.5'L
15	COMBINATION 1/8" & 1/32" H.B.	STA. 5+23.97	6.4'R
16	1/16" H.B.	STA. 5+45.44	2.96'R
17	DEFLECTION ANGLE 2°25'11"	STA. 5+36.10	3.4'R
18	8" VALVE	STA. 5+40.75	3.0'R
19	8"x8" TEE & 8" VALVE	STA. 7+11.18	0.00'
20	8"x8" TEE & 8" VALVE	N 558289.2184	E 1344639.3266
21	8"x8" TEE & 6" VALVE	STA. 8+30.77	0'
22	FIRE HYDRANT BURY LINE EL. 414.00'	STA. 8+30.77	22.32'L
23	COMBINATION 1/8" & 1/32" H.B.	STA. 9+21.02	6.82'R
24	COMBINATION 1/16" & 1/32" H.B.	STA. 9+56.18	3.81'R
25	1/16" H.B.	STA. 11+75.51	6.25'R
26	8" VALVE	STA. 11+79.66	6.46'R
27	1/16" H.B.	STA. 11+84.24	7.4'R
28	1/32" H.B.	STA. 11+91.38	6.56'R
29	DEFLECTION ANGLE 3°50'31"	STA. 11+97.19	5.53'R
30	1/16" H.B.	STA. 12+01.65	4.99'R
31	8"x8" TEE & 6" VALVE	STA. 13+62.08	0'
32	FIRE HYDRANT BURY LINE EL. 414.50'	STA. 13+62.08	18.38'L
33	8"x8" TEE & 6" VALVE	STA. 13+93.59	0'
34	6" PLUG & BUTTRESS	STA. 1+60.45	7.4'L
35	1 1/2" DRAIN (HO.CO. STD. DETAIL W4.12)	STA. 1+59.00	7.4'L
36	1/16" H.B.	STA. 15+80.88	4.37'R
37	1/32" H.B.	STA. 15+88.22	3.69'R
38	DEFLECTION ANGLE 2°10'52"	STA. 15+92.91	2.73'R
		STA. 15+97.76	1.88'R
		STA. 16+02.70	0.66'R
39	8" VALVE	STA. 16+28.12	13.33'L
40	8"x4" TAPPING SLEEVE & 4" VALVE	STA. 1+60.9	1.23'L

SEE SHEET 4 FOR UNITS REPLACING 7, 8, 52-58 & 63-73

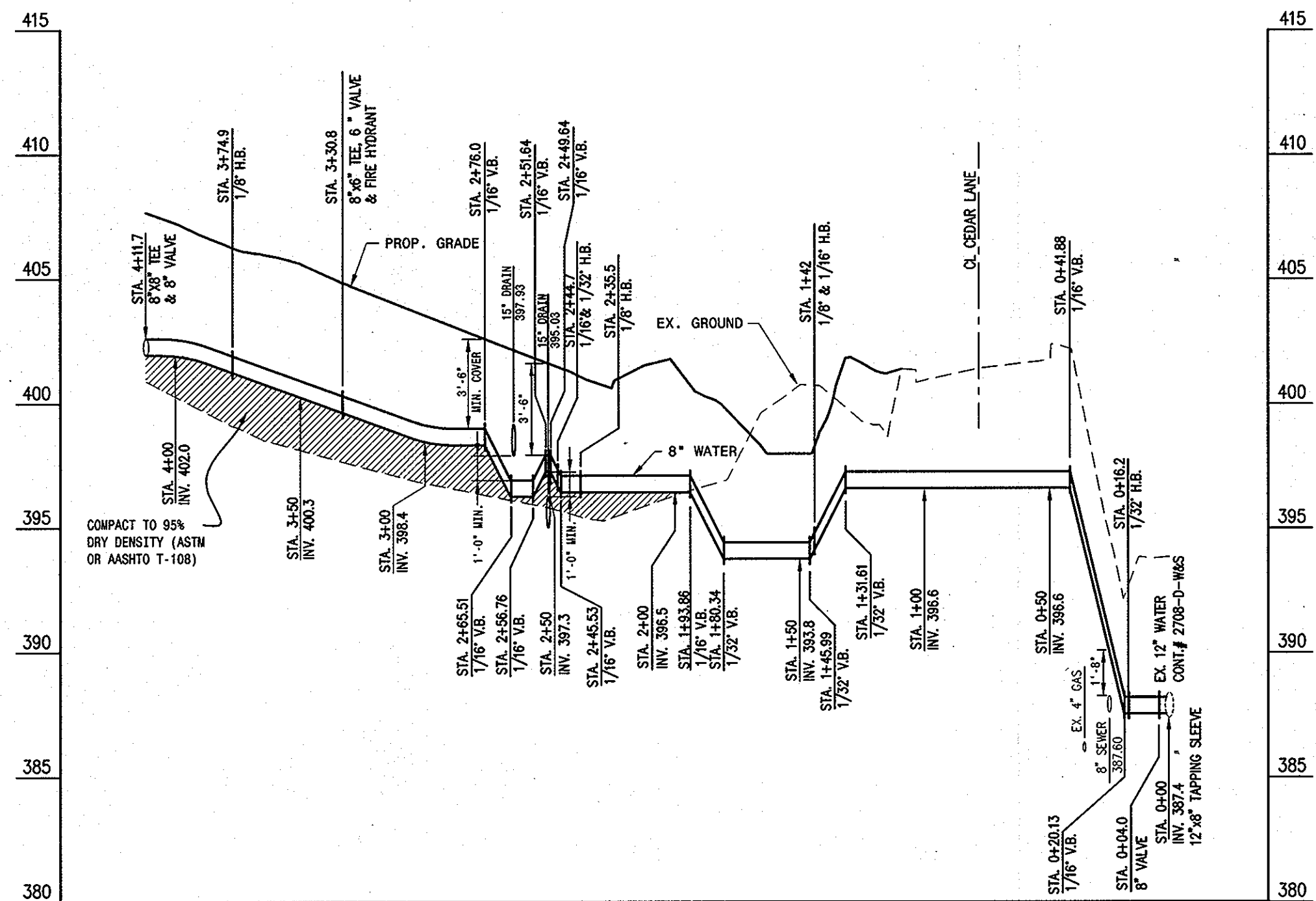
LOTS 58, 71, 72 AND 73 HAVE BEEN REMOVED

DEPARTMENT OF PUBLIC WORKS HOWARD COUNTY, MARYLAND 11-3-04 CHIEF, BUREAU OF UTILITIES	DEPARTMENT OF PLANNING AND ZONING HOWARD COUNTY, MARYLAND 11/16/04 CHIEF, DEVELOPMENT ENGINEERING DIVISION	PREPARED BY: American Land Development and Engineering, Inc. 10749 BIRMINGHAM WAY WOODSTOCK, MD. 21163 TEL. (410) 465-7903 FAX. (410) 465-3845	DES.: DW/AG DRN.: AVG CHK.: DW DATE: 10-08-04	BEI 5 REVISE FIRE HYDRANT "D" LOCATION 8/27/02 BEI 4 REVISE LOTS, MOVE BLOWOFF & FH, REMOVE 3-4-11 3-4-11-06 K.C.I. ABSOLUTE DATA 04/14/06 DW 4" FIRELINE 8"x4" TAPPING SLEEVE & 4" VALVE 12-29-06 AVG REVISE PROJECT NAME & STREET NAME 3-7-09	<h1>WATER MAIN PLAN</h1> <p>600' SCALE MAP No. 35 BLOCK No. 17</p>	SCOTS GLEN NORTH BUILDABLE BULK PARCEL "A" - UNITS 1-67, 69, AND COMMUNITY CENTER PLANNED SENIOR COMMUNITY (PSC) - AGE RESTRICTED ADULT HOUSING A RESUBDIVISION OF CEDAR ACRES, BLOCK "C", LOTS 1, 2, 2A, 2B AND 3 5th ELECTION DISTRICT, TAX MAP 35, GRID 17, HOWARD COUNTY, MD. 21044 CONTRACT NO. : 34-4219-D SDP No. 04-124 SCALE : 1" = 50' SHEET NO. 2 OF 4
--	---	--	--	---	--	---



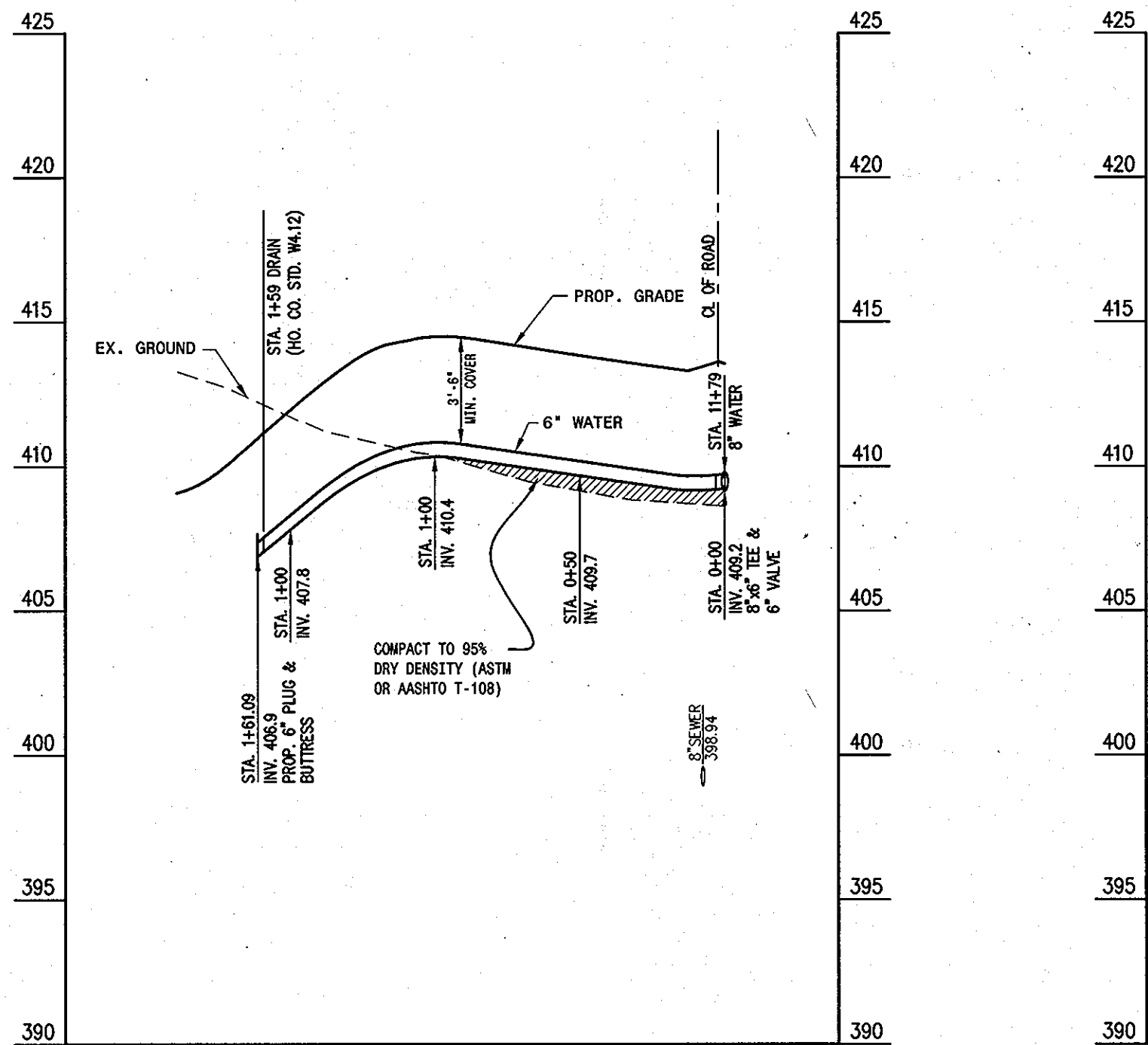
8" WATER MAIN - PROFILE

SCALE: 1" = 50' HOR.
1" = 5' VER.



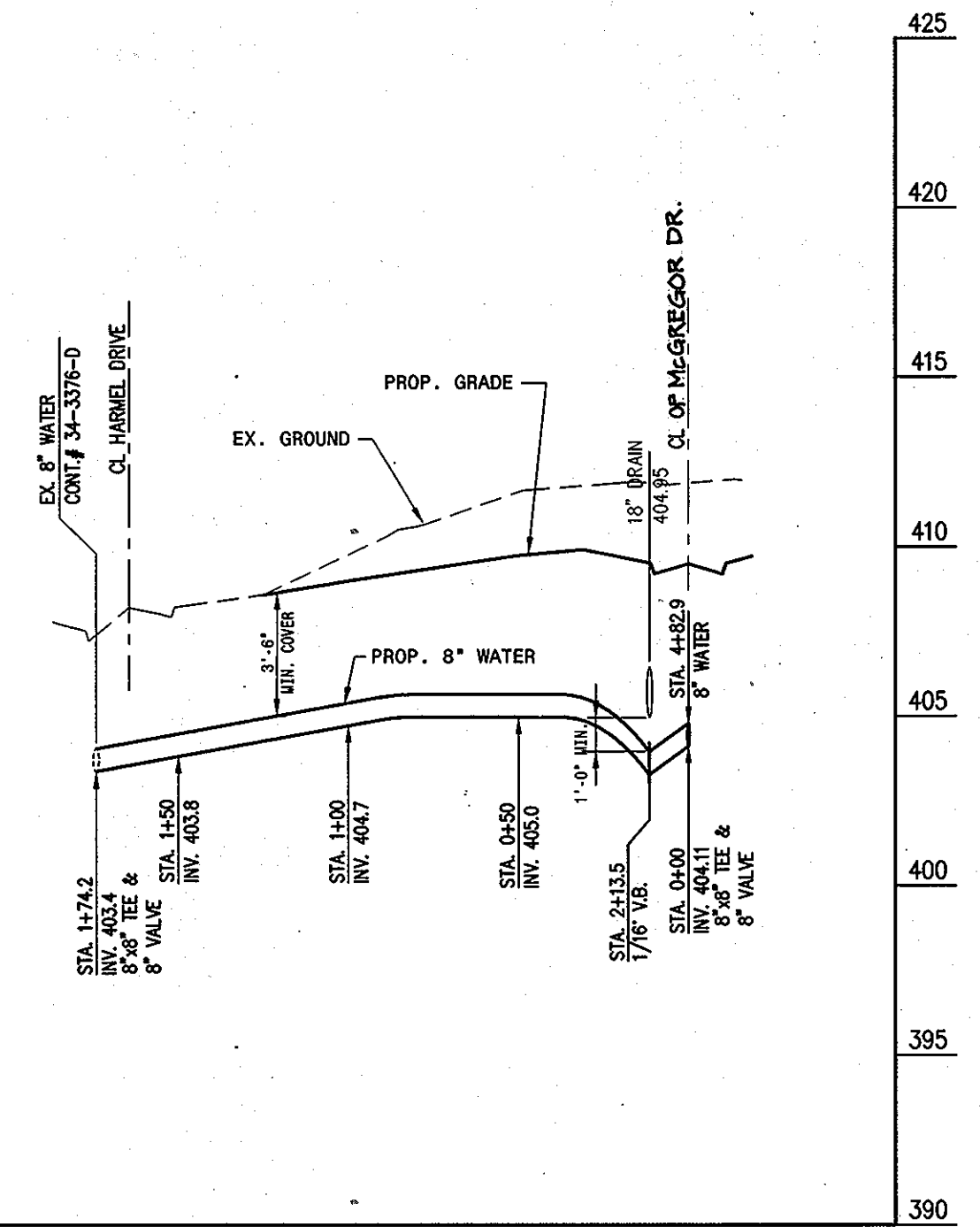
8" WATER MAIN - PROFILE

SCALE: 1" = 50' HOR.
1" = 5' VER.



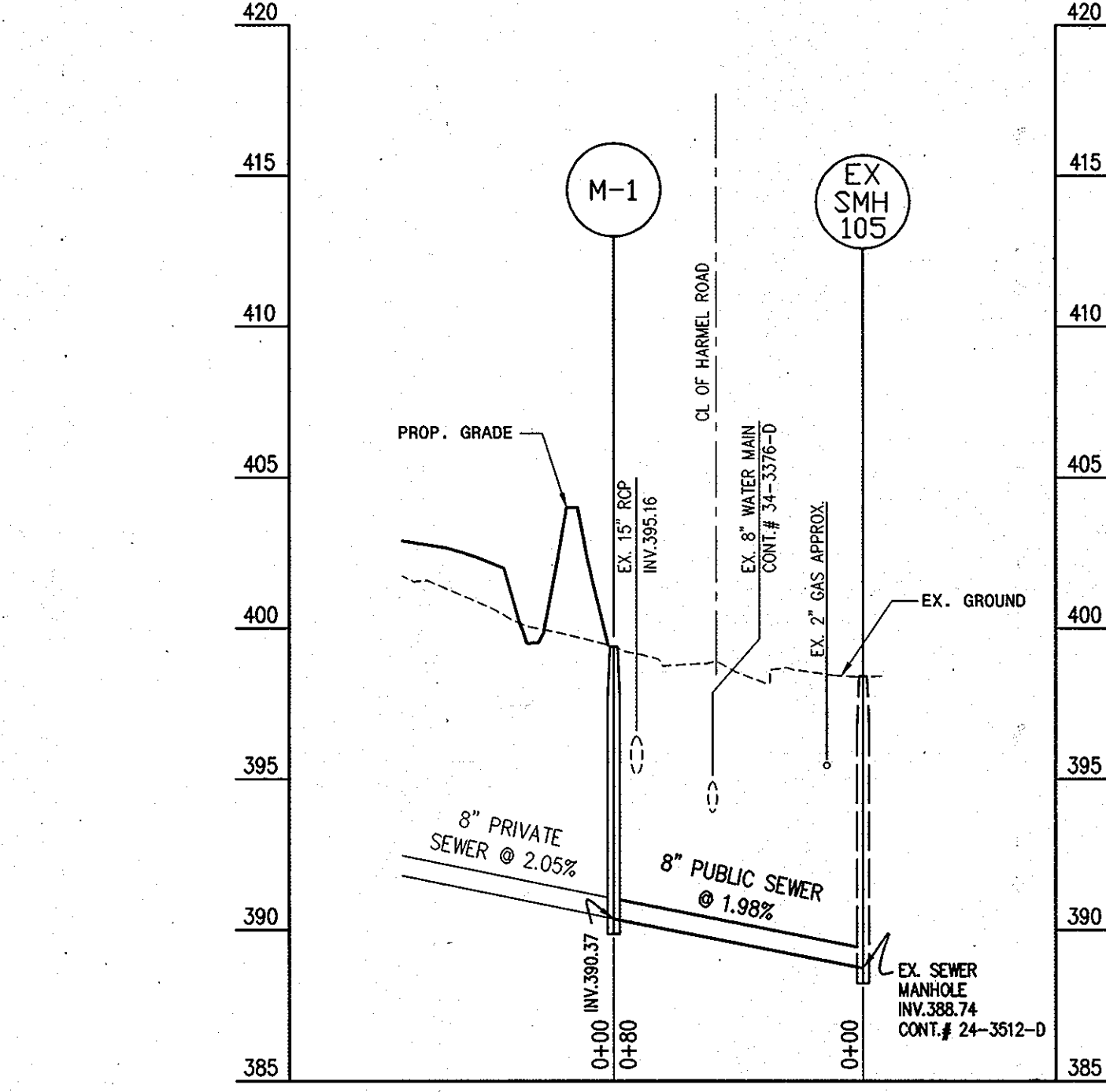
6" WATER MAIN - PROFILE

SCALE: 1" = 50' HOR.
1" = 5' VER.



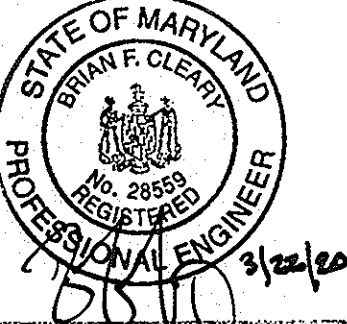
8" WATER MAIN - PROFILE

SCALE: 1" = 50' HOR.
1" = 5' VER.



8" SEWER MAIN - PROFILE

SCALE: 1" = 50' HOR.
1" = 5' VER.



Professional Certification: I hereby certify that these documents were prepared or approved by me, and that I am a duly licensed professional engineer under the laws of the State of Maryland.
License No. 28569, Expiration Date: 7/12/2011

FOR REVISION BY BENCHMARK ENGINEERING & INC. #2, 3

DEPARTMENT OF PUBLIC WORKS
HOWARD COUNTY, MARYLAND
Ruth Benji 11-3-04
CHIEF, BUREAU OF UTILITIES

DEPARTMENT OF PLANNING AND ZONING
HOWARD COUNTY, MARYLAND
[Signature] 11/16/04
CHIEF, DEVELOPMENT ENGINEERING DIVISION

PREPARED BY:
American Land Development and Engineering, Inc.
10749 BIRMINGHAM WAY WOODSTOCK, MD. 21163
TEL. (410) 465-7903 FAX. (410) 465-3845



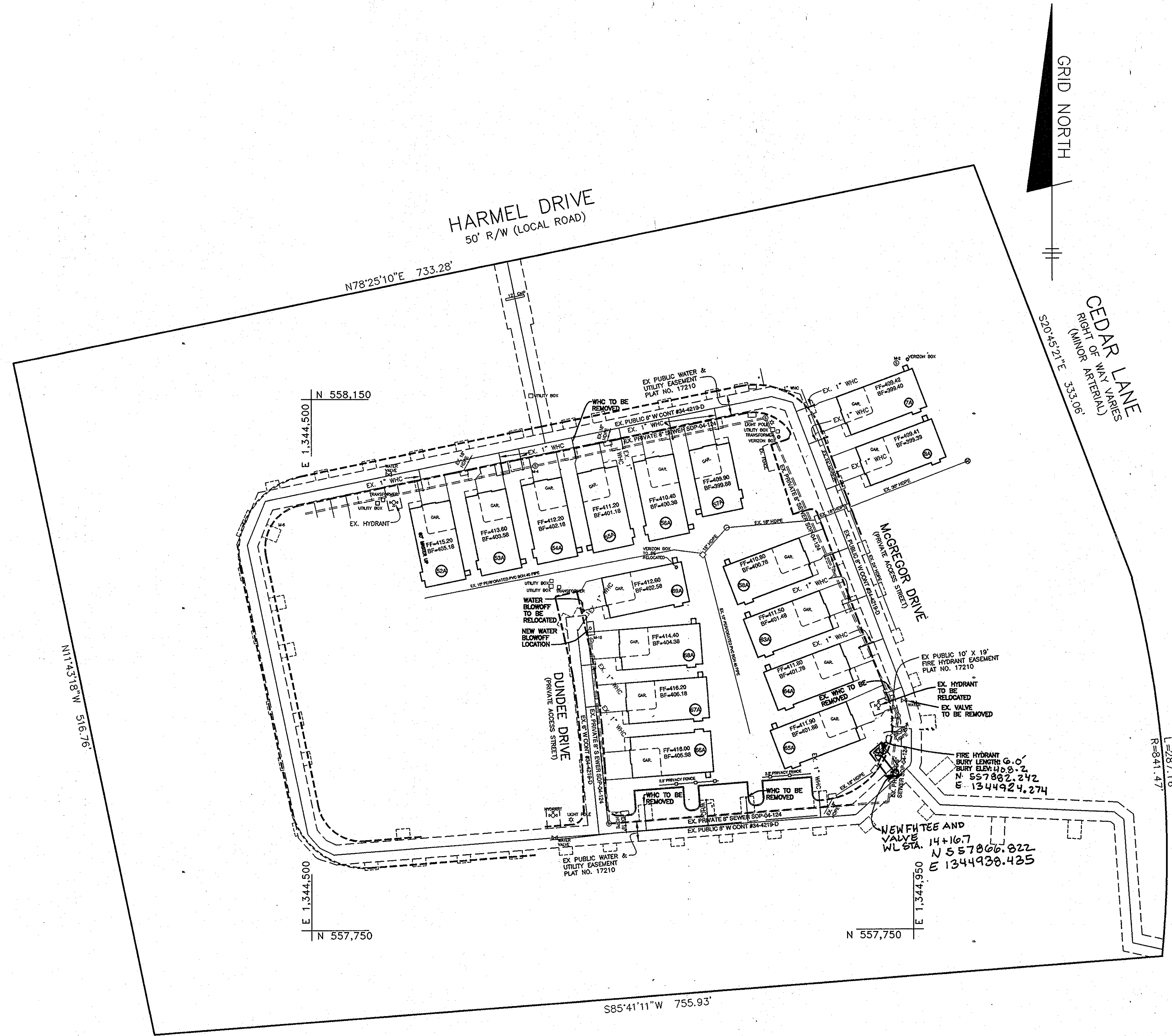
DES.:	DW/AG		
DRN.:	AVG		
CHK.:	DW	BEI 3	REVISE PROFILE TO SHOW NEW LOCATION OF FIRE HYDRANT 8-27-11
		BEI 2	REVISE TITLE BLOCK & 6" TEE VALVE LOCATION 3-4-11
		AW	REVISE PROJECT NAME 3-7-08
DATE:	10-08-04	BY	NO.
			REVISIONS

WATER MAIN PROFILES
600' SCALE MAP No. 35 BLOCK No. 17

SCOTS GLEN NORTH
BUILDABLE BULK PARCEL "A" - UNITS 1-6, 7A, 8A AND COMMUNITY CENTER
PLANNED SENIOR COMMUNITY (PSC) - AGE RESTRICTED ADULT HOUSING
A RESUBDIVISION OF CEDAR ACRES, BLOCK "C", LOTS 1, 2, 2A, 3B AND 3
5th ELECTION DISTRICT, TAX MAP 35, GRID 17, HOWARD COUNTY, MD. 21044
CONTRACT NO. : 34-4219-D SDP No. 04-124

SCALE: AS SHOWN
SHEET NO. 3 OF 4

1: SUBDIVISION PROJECTS CEDAR VILLA 1-FINAL WATERSEWERIC-14-1-NE.dwg, WATERPLAN (2), 10/02/2004 3:23:32 PM, DWG



PLAN
SCALE: 1" = 50'

NOTE:
WATER VALVE BOXES
THAT ARE IN THE
DRIVEWAYS MUST BE
CAST IRON BOXES
AND LIDS.

UNITS 7, 8, 52-58, 63-73
HAVE BEEN REPLACED
WITH UNITS 7A, 8A,
52A-58A AND 63A-69A

Professional Certification. I hereby certify that these documents were prepared or approved by me, and that I am a duly licensed professional engineer under the laws of the State of Maryland. License No. 28599, Expiration Date: 7-22-2011.

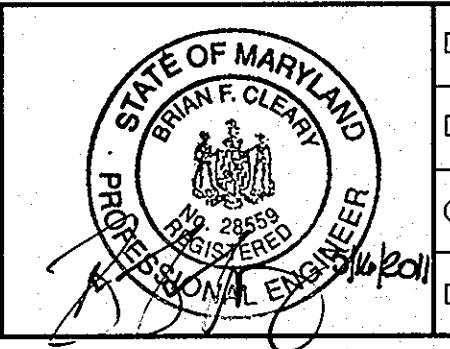
DEPARTMENT OF PUBLIC WORKS
HOWARD COUNTY, MARYLAND

Silvia Chen
CHIEF, BUREAU OF UTILITIES

DEPARTMENT OF PLANNING AND ZONING
HOWARD COUNTY, MARYLAND

M. J. ...
CHIEF, DEVELOPMENT ENGINEERING DIVISION

BENCHMARK
ENGINEERS & LAND SURVEYORS & PLANNERS
ENGINEERING, INC.
8480 BALTIMORE NATIONAL PIKE & SUITE 418 A ELICOTT CITY, MARYLAND 21043
(P) 410-465-8105 (F) 410-463-9844
60 THOMAS JOHNSON DRIVE & FREDERICK, MARYLAND 21702
(P) 301-371-3505 (F) 301-371-3506
WWW.B3-CIVILENGINEERING.COM



DESIGN:	JMC				
DRAFT:	JMC				
CHK:	BFC				
DATE:	05/2011	BY:	NO.	REVISIONS	DATE
		BEI	1	REVISE LOCATION OF FIRE HYDRANT & EASEMENT	8-27-12

WATER MAIN PLAN
600 SCALE MAP NO. 35
BLOCK: 17

SCOTS GLEN NORTH
BUILDBALE BULK PARCEL "A" - UNITS 1-6, 7A, 8A, 9-51, 52A-58A, 59-62, 63A-69A
AND COMMUNITY CENTER
PLANNED SENIOR COMMUNITY (PSC) - AGE RESTRICTED ADULT HOUSING
A RESUBDIVISION OF CEDAR ACRES, BLOCK "C", LOTS 1, 2, 2A, 2B AND 3
5th ELECTION DISTRICT, TAX MAP 35, GRID 17, HOWARD COUNTY, MD. 21044
CONTRACT NO. 34-4219-D

SCALE:
AS SHOWN

SHEET NO.
4 OF 4