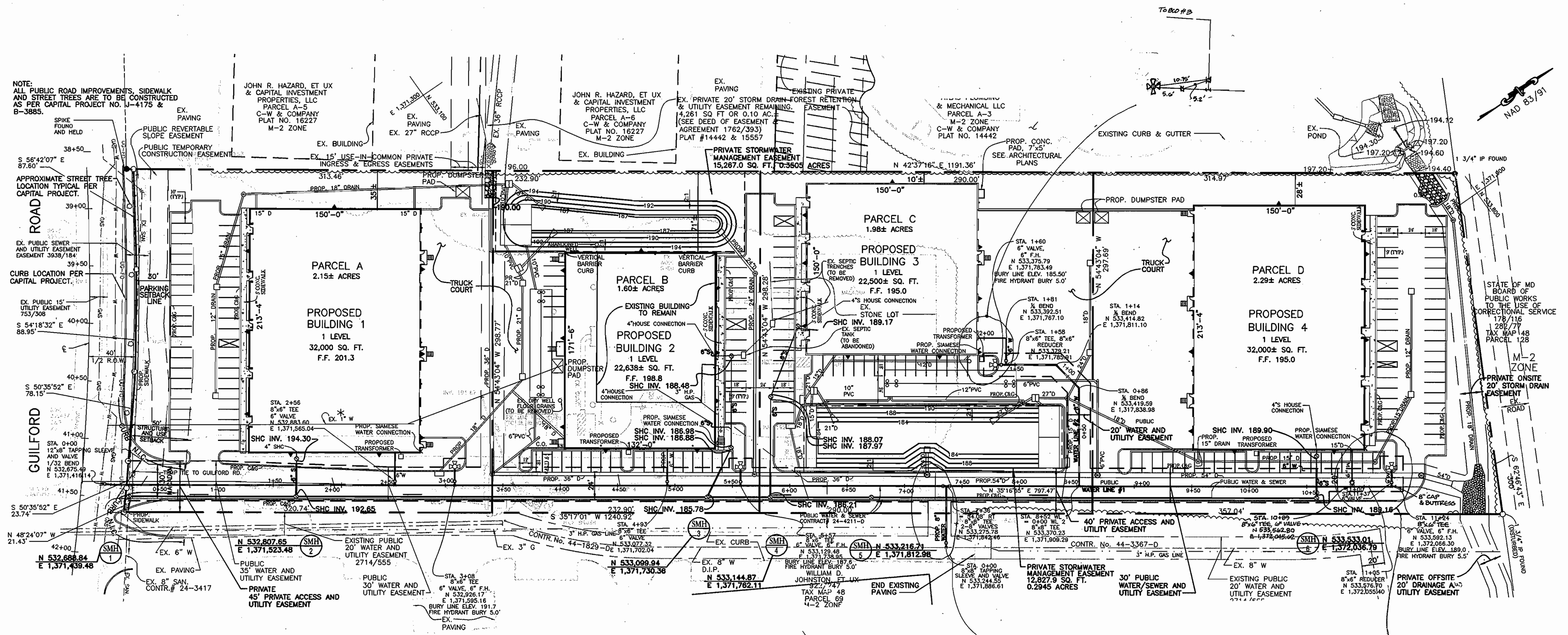


HOWARD COUNTY, MARYLAND
DEPARTMENT OF PUBLIC WORKS
CONTRACT #24-4211-D



PLAN
SCALE: 1"=50'

ABSOLUTE WATER FIELD MEASUREMENTS

TO	FROM	FT.
12" x 8" T.B.E @ VALVE	SMH-1	21.0
12" x 8" T.B.E @ VALVE	EX. F.H. ON GUILFORD RD	85.0
FIRE HYDRANT 2100	FIRE HYDRANT VALVE	13.2
FIRE HYDRANT 2100	6" VALVE FOR BLDG #1	63.8
FIRE HYDRANT 2150	FIRE HYDRANT VALVE	13.2
FIRE HYDRANT 2150	SMH-2	41.0
FIRE HYDRANT VALVE	SMH-3	24.0
6" VALVE BLDG #1	FIRE HYDRANT 2100	63.3
6" VALVE BLDG #2	FIRE HYDRANT VALVE 2150	64.1
6" VALVE BLDG #2	FIRE HYDRANT 2150	63.7

F-04-07
SDP-04-098

REVIEWED FOR HOWARD SOIL CONSERVATION DISTRICT AND MEETS TECHNICAL REQUIREMENT.
John R. Robertson 4/19/05
SIGNATURE DATE

U.S.D.A. NATURAL RESOURCES CONSERVATION SERVICE

THIS DEVELOPMENT PLAN IS APPROVED FOR SOIL EROSION AND SEDIMENT CONTROL BY THE HOWARD SOIL CONSERVATION DISTRICT

APPROVED:
Jim Muzey 4/19/05
HOWARD S.C.D. DATE

THIS DRAWING SUPERSEDES DRAWING APPROVED 8-4-04

DEPARTMENT OF PUBLIC WORKS
HOWARD COUNTY, MARYLAND
R. J. B. B... 5.9.05
CHIEF, BUREAU OF UTILITIES DATE

DEPARTMENT OF PLANNING AND ZONING
HOWARD COUNTY, MARYLAND
... 5/16/05
CHIEF, DEVELOPMENT ENGINEERING DIVISION DATE

CENTURY ENGINEERING, INC.
CONSULTING ENGINEERS, PLANNERS, SURVEYORS
32 WEST ROAD
TOWSON, MARYLAND 21204
(410) 823-8070



DES:	
DRN:	
CHK:	FCI 1 ABSOLUTE DATA SHOWN 03/03/05
DATE:	CEI 3-30-05
BY:	NO
REVISION:	
DATE:	

WATER EXTENSIONS
600' SCALE MAP NO. 48 BLOCK NO. 14, 20

ANNAPOLIS JUNCTION BUSINESS PARK
2nd ELECTION DISTRICT, 4 LOTS
HOWARD COUNTY, MARYLAND
CONTRACT # 24-4211-D
SCALE 1"=50'
SHEET 2 OF 3

