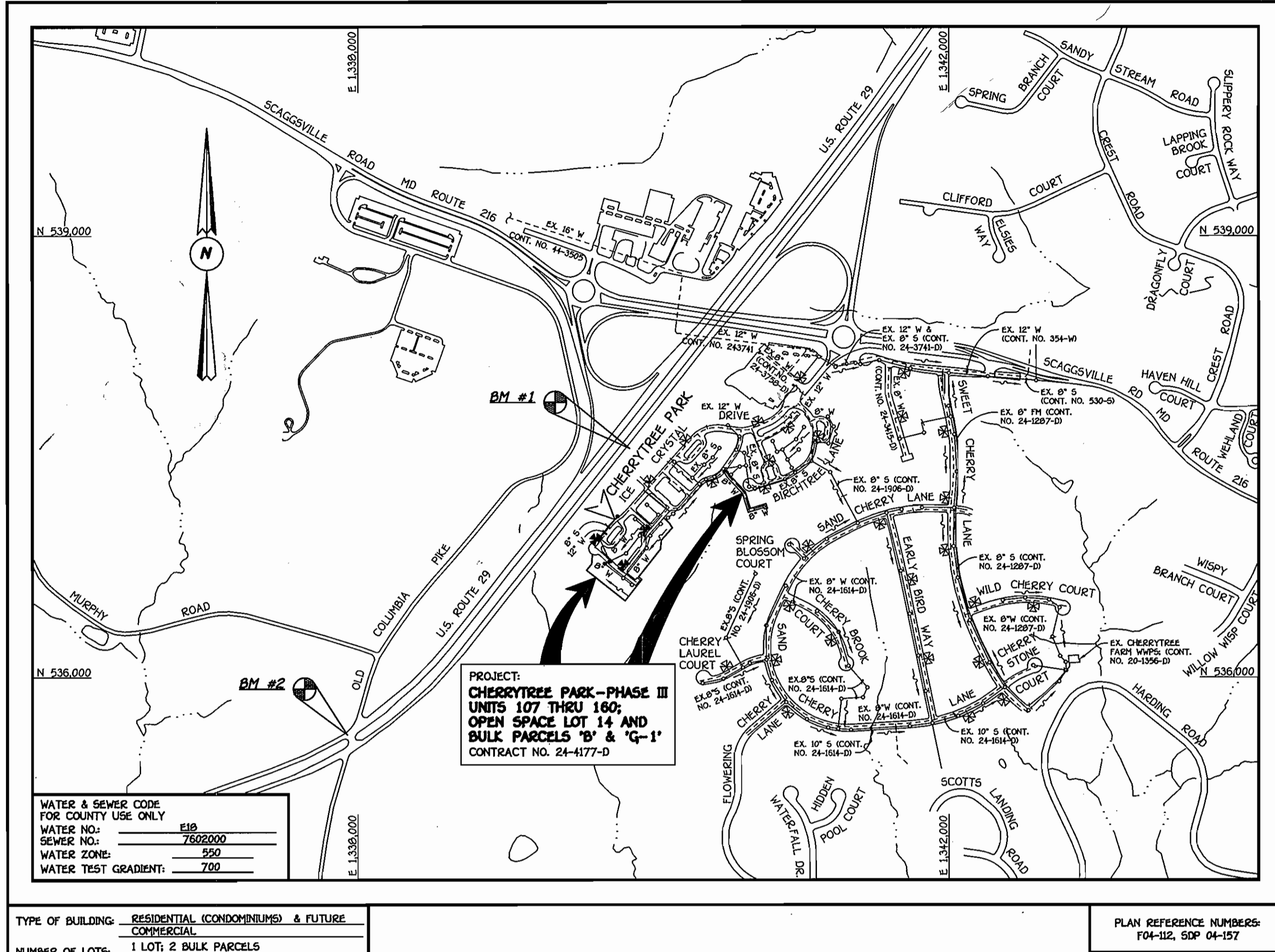


| QUANTITIES | | | | |
|--------------------------------|-------------|------------|---------------|------------------|
| ITEM | ESTIMATED | AS-BUILT | | SUPPLIER |
| | | QUANTITIES | TYPE | |
| 12" WATER | 508 L.F. | 508 L.F. | CL. 52, DIP | GRIFFIN PIPE CO. |
| 8" WATER | 1012 L.F. | 1917 L.F. | CL. 52, DIP | GRIFFIN PIPE CO. |
| 6" WATER | 64 L.F. | 60 L.F. | CL. 52, DIP | GRIFFIN PIPE CO. |
| 1-1/2" WATER | 1352 L.F. | 1200 L.F. | CERRD | HUGHES |
| FIRE HYDRANTS | 4 EACH | 4 EACH | KENNEDY | HUGHES |
| 8" X 8" TAPPING SLEEVE & VALVE | 2 EACH | 2 EACH | FORD/KENNEDY | HUGHES |
| 12" X 8" CROSS | 1 EACH | 1 EACH | TYLER | HUGHES |
| 12" X 8" TEE | 3 EACH | 3 EACH | TYLER | HUGHES |
| 8" X 8" TEE | 5 EACH | 6 EACH | TYLER | HUGHES |
| 8" X 6" TEE | 4 EACH | 4 EACH | TYLER | HUGHES |
| 8" VALVE | 11 EACH | 11 EACH | TYLER | HUGHES |
| 6" VALVE | 4 EACH | 4 EACH | TYLER | HUGHES |
| 12" - 1/32 H.B. | 1 EACH | 2 EACH | TYLER | HUGHES |
| 8" - 1/8 H.B. | 3 EACH | 3 EACH | TYLER | HUGHES |
| 8" - 1/16 H.B. | 6 EACH | 6 EACH | TYLER | HUGHES |
| 8" - 1/32 H.B. | 2 EACH | 2 EACH | TYLER | HUGHES |
| 12" PLUG & BUTTRESS | 1 EACH | 1 EACH | TYLER | HUGHES |
| 8" PLUG & BUTTRESS | 5 EACH | - | TYLER | HUGHES |
| 8" SEWER | 431.50 L.F. | 500 L.F. | SDR-35, PVC | HUGHES |
| 8" PLUG | 3 EACH | 3 EACH | - | - |
| MANHOLES | 4 EACH | 4 EACH | PRECAST CONC. | ATLANTIC CONC. |
| 4" FORCE MAIN (CL. 52 D.I.P.) | 550.60 L.F. | 550 L.F. | CL. 52, DIP | GRIFFIN PIPE CO. |
| 4" - 1/16 H.B. | 1 EACH | 2 EACH | TYLER | HUGHES |
| 4" - 1/32 H.B. | 1 EACH | 1 EACH | TYLER | HUGHES |
| 4" PLUG & BUTTRESS | 1 EACH | 1 EACH | TYLER | HUGHES |

NAME OF UTILITY CONTRACTOR: GAINES AND COMPANY, INC.
SURVEY & DRAFTING DIVISION AS-BUILT DATE: NOVEMBER 2008



GENERAL NOTES

- PART I**
- APPROXIMATE LOCATIONS OF EXISTING MAINS ARE SHOWN. THE CONTRACTOR SHALL TAKE ALL NECESSARY PRECAUTIONS TO PROTECT EXISTING MAINS AND SERVICES AND MAINTAIN UNINTERRUPTED SERVICE. ANY DAMAGE INCURRED SHALL BE REPAIRED IMMEDIATELY TO THE SATISFACTION OF THE ENGINEER AT THE CONTRACTOR'S EXPENSE.
 - ALL HORIZONTAL CONTROLS ARE BASED ON MARYLAND STATE COORDINATES, NAD 83/91.
 - ALL VERTICAL CONTROLS ARE BASED ON NAVD 83.
 - ALL PIPE ELEVATIONS SHOWN ARE INVERT ELEVATIONS UNLESS OTHERWISE NOTED ON THE PLANS.
 - CLEAR ALL UTILITIES BY A MINIMUM OF 12 INCHES. CLEAR ALL POLES BY 5'-0" MINIMUM OR TUNNEL AS REQUIRED UNLESS OTHERWISE NOTED. THE OWNER HAS CONTACTED THE UTILITY COMPANIES AND HAS MADE ARRANGEMENTS FOR BRACING OF POLES AS SHOWN ON THE DRAWINGS. IN THE EVENT THE CONTRACTOR'S WORK REQUIRES BRACING OF ADDITIONAL POLES, ANY COST INCURRED BY THE OWNER FOR THE BRACING OF THE ADDITIONAL POLES OR DAMAGES SHALL BE DEDUCTED FROM MONIES OWED THE CONTRACTOR. THE CONTRACTOR SHALL COORDINATE WITH THE UTILITY COMPANIES TO SCHEDULE THE BRACING OF THE POLES.
 - FOR DETAILS NOT SHOWN ON THE DRAWINGS, AND FOR MATERIALS AND CONSTRUCTION METHODS, USE HOWARD COUNTY DESIGN MANUAL VOLUME IV, STANDARD SPECIFICATIONS AND DETAILS FOR CONSTRUCTION (LATEST EDITION). THE CONTRACTOR SHALL HAVE A COPY OF VOLUME IV ON THE JOB SITE.
 - WHERE TEST FITS HAVE BEEN MADE ON EXISTING UTILITIES, THEY ARE NOTED BY THE SYMBOL @ AT THE LOCATIONS OF THE TEST FITS. A NOTE OR NOTES CONTAINING THE RESULTS OF THE TEST FIT OR FITS IS INCLUDED ON THE DRAWINGS. EXISTING UTILITIES IN THE VICINITY OF THE PROPOSED WORK FOR WHICH TEST FITS HAVE NOT BEEN DUG SHALL BE LOCATED BY THE CONTRACTOR TWO WEEKS IN ADVANCE OF CONSTRUCTION OPERATIONS AT HIS OWN EXPENSE.
 - THE CONTRACTOR SHALL NOTIFY THE FOLLOWING UTILITY COMPANIES OR AGENCIES AT LEAST FIVE WORKING DAYS BEFORE STARTING WORK SHOWN ON THESE PLANS:
AT&T 1-800-252-1133
BGE (CONTRACTOR SERVICES) 410-850-4620
BGE (UNDERGROUND DAMAGE CONTROL) 410-787-9068
BUREAU OF UTILITIES 410-313-4900
COLONIAL PIPELINE CO 410-795-1390
MISS UTILITY 1-800-257-7777
STATE HIGHWAY ADMINISTRATION 410-531-9533
VERIZON 1-800-743-0033/410-224-9210
- PART II: WATER**
- ALL WATER MAINS SHALL BE D.I.P. CLASS 52 UNLESS OTHERWISE NOTED.
 - TOPS OF ALL WATER MAINS SHALL HAVE A MINIMUM OF 3'-0" OF COVER UNLESS OTHERWISE NOTED.
 - VALVES ADJACENT TO TEES SHALL BE STRAPPED TO TEES.
 - ALL FITTINGS SHALL BE BUTTRESSED OR ANCHORED WITH CONCRETE IN ACCORDANCE WITH STANDARD DETAILS UNLESS OTHERWISE PROVIDED FOR ON THE DRAWINGS.
 - FIRE HYDRANTS SHALL BE SET TO THE BURY LINE ELEVATIONS SHOWN ON THE DRAWINGS. ALL FIRE HYDRANTS SHALL BE INSTALLED IN ACCORDANCE WITH STANDARD DETAILS. THE SOIL AROUND THE FIRE HYDRANT SHALL BE COMPACTED IN ACCORDANCE WITH SECTION 1000 AND SECTION 1005 OF THE STANDARD SPECIFICATIONS.
 - THE CONTRACTOR SHALL NOT OPERATE ANY WATER MAIN VALVES ON THE EXISTING WATER SYSTEM.
- PART III: SEWER**
- ALL SEWER MAINS SHALL BE D.I.P. OR P.V.C. UNLESS OTHERWISE NOTED.
 - ALL MANHOLES SHALL BE 4'-0" INSIDE DIAMETER UNLESS OTHERWISE NOTED.
 - FORCE MAINS SHALL BE 12" ONLY.
 - MANHOLES SHOWN WITH 12" AND 16" WALLS ARE FOR BRICK MANHOLES ONLY.
 - MANHOLES DESIGNATED W.T. IN PLAN AND PROFILE SHALL HAVE WATERTIGHT FRAME AND COVER. STANDARD DETAIL C5.52 WHERE WATERTIGHT MANHOLE FRAMES AND COVERS ARE USED. SET TOP OF FRAME 1'-6" ABOVE FINISHED GRADE UNLESS OTHERWISE NOTED ON THE DRAWINGS.
 - HOUSES WITH THE SYMBOL "C.N.S." INDICATES THAT THE CELLAR CANNOT BE SERVED.

DEVELOPER'S CERTIFICATION
I HEREBY CERTIFY THAT ALL DEVELOPMENT AND CONSTRUCTION WILL BE DONE ACCORDING TO THIS PLAN OF DEVELOPMENT AND PLAN FOR EROSION AND SEDIMENT CONTROL AND THAT ALL RESPONSIBLE PERSONNEL INVOLVED IN THE CONSTRUCTION PROJECT WILL HAVE A CERTIFICATE OF ATTENDANCE AT THE DEPARTMENT OF THE ENVIRONMENT APPROVED TRAINING PROGRAM FOR THE CONTROL OF SEDIMENT AND EROSION BEFORE BEGINNING THE PROJECT. I ALSO AUTHORIZE PERIODIC ON-SITE INSPECTION BY THE HOWARD SOIL CONSERVATION DISTRICT OR THEIR AUTHORIZED AGENTS, AS ARE DEEMED NECESSARY.

Paul W. Kriebel FOR:
Cherrytree II, LLC
SIGNATURE OF DEVELOPER
07-07-04
DATE

ENGINEER'S CERTIFICATION
I HEREBY CERTIFY THAT THIS PLAN FOR EROSION AND SEDIMENT CONTROL REPRESENTS A PRACTICAL AND WORKABLE PLAN BASED ON MY PERSONAL KNOWLEDGE OF THE SITE CONDITIONS AND THAT IT WAS PREPARED IN ACCORDANCE WITH THE REQUIREMENTS OF THE HOWARD SOIL CONSERVATION DISTRICT.

Paul W. Kriebel
SIGNATURE OF ENGINEER
07-07-04
DATE

CONTRACT NO. 24-4177-D

CHERRYTREE PARK - PHASE III

UNITS 107 THRU 160; OPEN SPACE LOT 14
AND BULK PARCELS 'B' & 'G-1'
HOWARD COUNTY, MARYLAND

REVIEWED FOR HOWARD COUNTY SOIL CONSERVATION DISTRICT AND MEETS TECHNICAL REQUIREMENTS.

Jim M. Guss
U.S.D.A. NATURAL RESOURCES CONSERVATION SERVICE
DATE: 7/12/04

APPROVE: J. K. [Signature]
HOWARD SOIL CONSERVATION DISTRICT
DATE: 7/12/04

SEDDIMENT CONTROL MEASURES FOR THIS CONTRACT WILL BE IMPLEMENTED IN ACCORDANCE WITH SECTION 219 OF THE HOWARD COUNTY DESIGN MANUAL & STANDARDS AND SPECIFICATIONS FOR SOIL EROSION AND SEDIMENT CONTROL IN DEVELOPING AREAS AND AS SHOWN ON THESE PLANS.

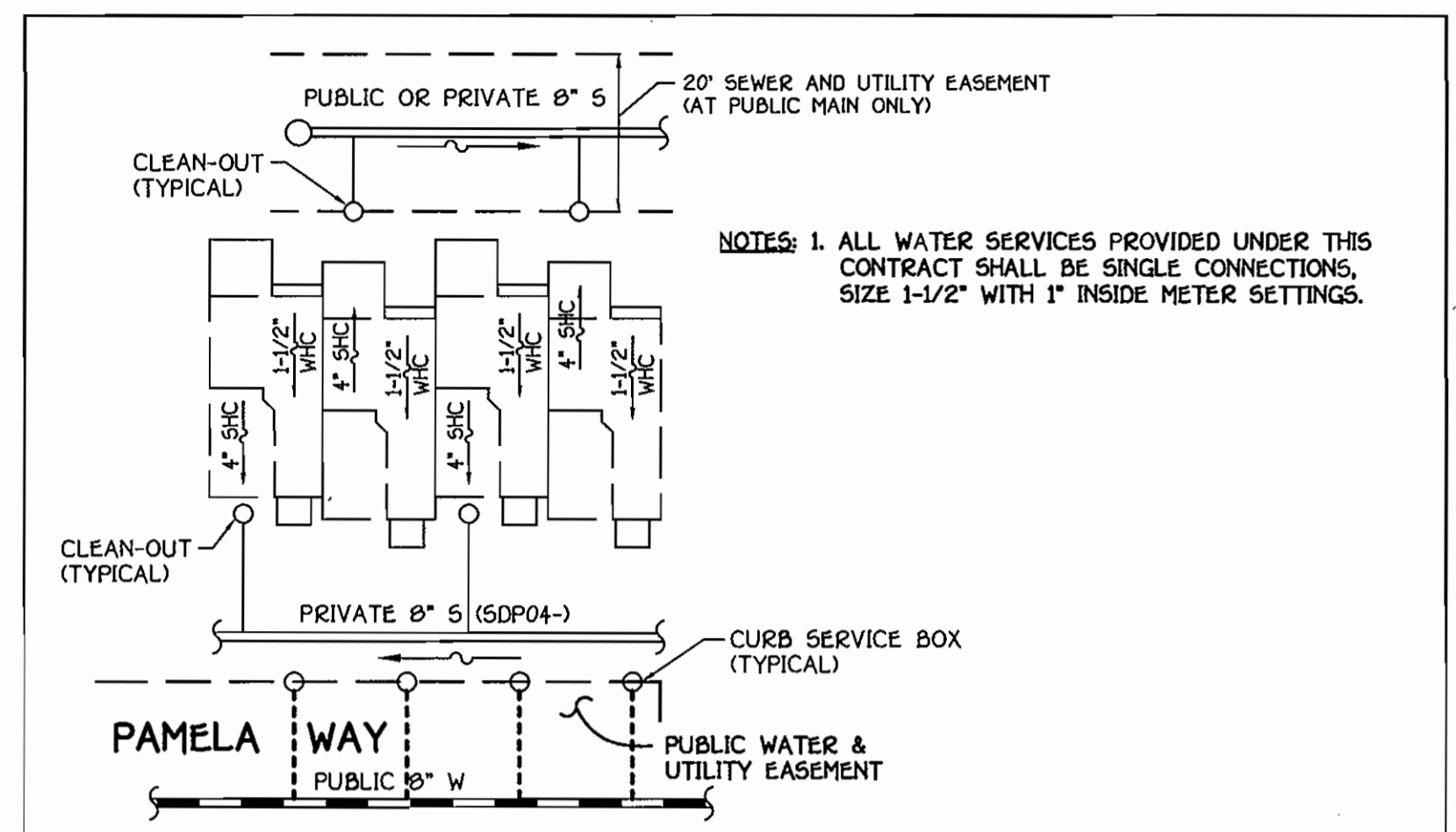
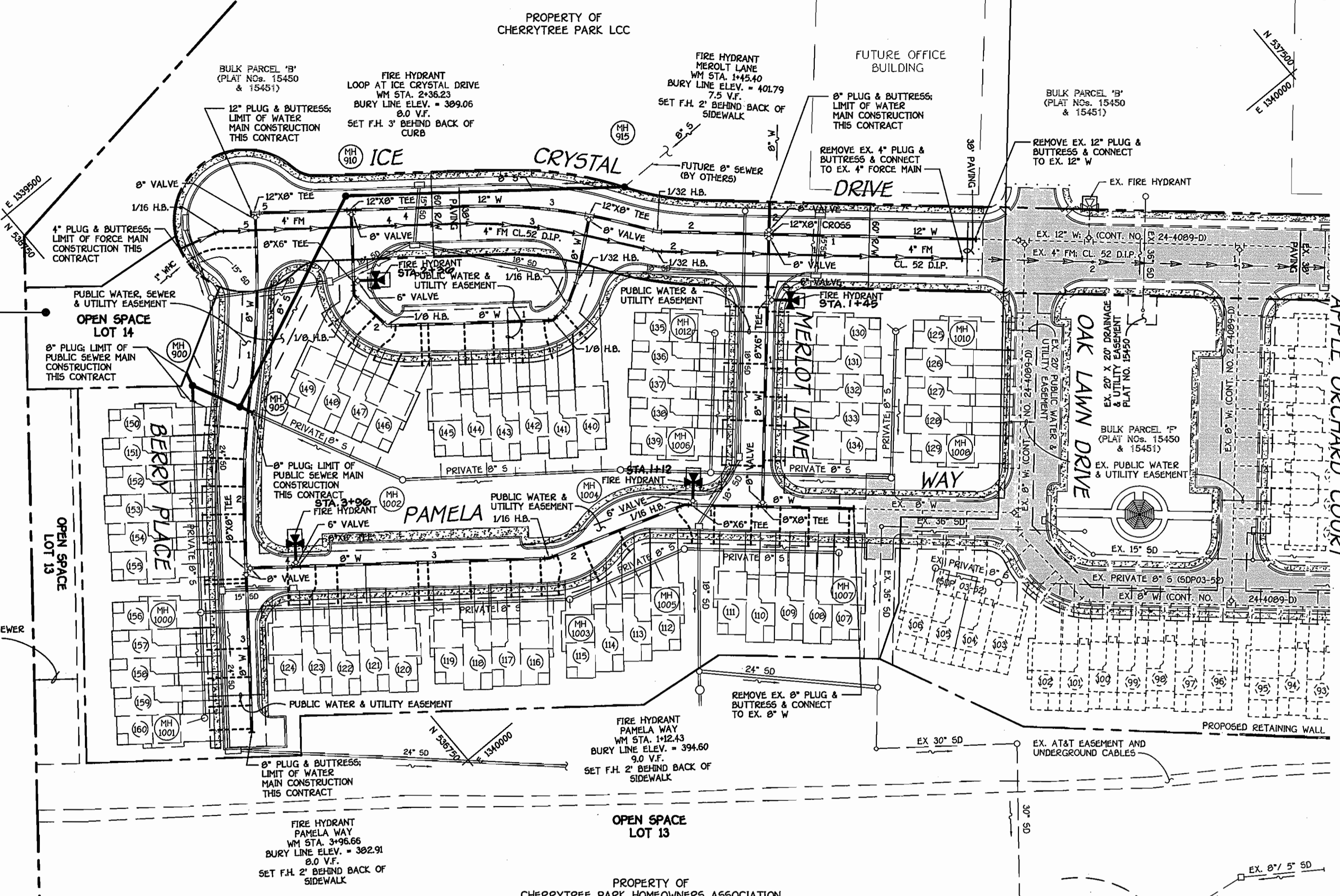
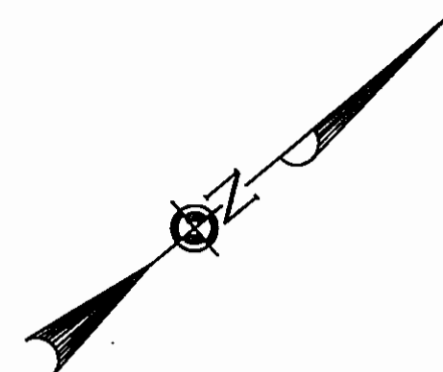
Paul W. Kriebel FOR:
Cherrytree II, LLC
SIGNATURE OF DEVELOPER
07-07-04
DATE

| | |
|---|--|
| Owner | Developer |
| Cherrytree II, LLC. 10230 New Hampshire Avenue Suite 300 Silver Spring, Maryland 20930 Attn: Mr. Chris Froelich And Cherrytree Park Homeowner's Association 10230 New Hampshire Avenue Suite 300 Silver Spring, Maryland 20930 | Cherrytree II, LLC. 10230 New Hampshire Avenue Suite 300 Silver Spring, Maryland 20930 Attn: Mr. Chris Froelich |

AS BUILT
DATE: NOVEMBER 2008

| | | | | | |
|--|--|--|---|--|--|
| DEPARTMENT OF PUBLIC WORKS HOWARD COUNTY, MARYLAND [Signature] 7-15-04 CHIEF, BUREAU OF UTILITIES | DEPARTMENT OF PLANNING AND ZONING HOWARD COUNTY, MARYLAND [Signature] 7/26/04 CHIEF, DEVELOPMENT ENGINEERING DIVISION | FISHER, COLLINS & CARTER, INC. CIVIL ENGINEERING CONSULTANTS & LAND SURVEYORS NATIONAL SQUARE OFFICE PARK - 18272 BALTIMORE NATIONAL PIKE ELLCOTT CITY, MARYLAND 21042 4101 01 - 2955 [Professional Seal: Terrell A. Fisher, Professional Engineer, No. 9757] | DESIGNED BY: C.L.Y. DRAWN BY: C.L.Y. CHECKED BY: P.M.K. DATE: JULY, 2004 | TITLE SHEET 600' SCALE MAP NO. 46 BLOCK NO. 10 F.C.C. WORK ORDER NO. 30756 FILE NAME: 30756 WATER AND SEWER TITLE SHT | CHERRYTREE PARK - PHASE III UNITS 107 THRU 160; OPEN SPACE LOT 14 AND BULK PARCELS 'B' & 'G-1' CONTRACT NO. 24-4177-D SIXTH ELECTION DISTRICT HOWARD COUNTY, MARYLAND SCALE: AS SHOWN SHEET 1 OF 6 |
|--|--|--|---|--|--|

K:\Drawings\3030333 Cherrytree Park\WATSEWFinalPhase III\0708 Water and Sewer Title Sheet.dwg, 7/26/04, 2:37:16 PM



TYPICAL WHC & SHC DETAIL @ CONDOMINIUM UNITS
NO SCALE

AS BUILT
DATE: NOVEMBER 2008

NOTE: PAMELA LANE, MERLOT LANE & BERRY PLACE ARE PRIVATE STREETS.

FOR CONTINUATION OF SHC AND WHC AS BUILTS SEE SHEET No. 4

SHC AND WHC AS BUILTS

| UNIT # | LENGTH | TO |
|--------|---------|--------------|
| 107 | | |
| SHC | 110' | SMH-1005 |
| WHC | 119.5' | FH STA. 1+12 |
| | 115' | SMH-1005 |
| | 117.0' | FH STA. 1+12 |
| 108 | | |
| SHC | 94' | SMH-1005 |
| | 100.25' | FH STA. 1+12 |
| WHC | 86' | SMH-1005 |
| | 92.5' | FH STA. 1+12 |
| 109 | | |
| SHC | 74' | SMH-1005 |
| | 89.33' | FH STA. 1+12 |
| WHC | 67.6' | SMH-1005 |
| | 76.5' | FH STA. 1+12 |
| 110 | | |
| SHC | 55.5' | SMH-1005 |
| | 77.25' | FH STA. 1+12 |
| WHC | 45.6' | SMH-1005 |
| | 60' | FH STA. 1+12 |

| UNIT # | LENGTH | TO |
|--------|--------|--------------|
| 111 | | |
| SHC | 30' | SMH-1005 |
| | 62.3' | FH STA. 1+12 |
| WHC | 21.5' | SMH-1005 |
| | 47' | FH STA. 1+12 |
| 112 | | |
| SHC | 72.5' | FH STA. 1+12 |
| | 28.5' | SMH-1005 |
| WHC | 43.5' | FH STA. 1+12 |
| | 5.6' | SMH-1005 |
| 113 | | |
| SHC | 40.75' | SMH-1005 |
| | 81.6' | FH STA. 1+12 |
| WHC | 39' | SMH-1005 |
| | 67.5' | FH STA. 1+12 |
| 114 | | |
| SHC | 60.5' | SMH-1005 |
| | 98.2' | FH STA. 1+12 |
| WHC | 65.5' | SMH-1005 |
| | 97.6' | FH STA. 1+12 |

| UNIT # | LENGTH | TO |
|--------|--------|--------------|
| 115 | | |
| SHC | 91' | SMH-1005 |
| | 125' | FH STA. 1+12 |
| WHC | 93.5' | SMH-1005 |
| | 123.6' | FH STA. 1+12 |
| 116 | | |
| SHC | 25' | SMH-1003 |
| | 175' | FH STA. 3+90 |
| WHC | 18.5' | SMH-1003 |
| | 176.6' | FH STA. 3+90 |
| 117 | | |
| SHC | 49.5' | SMH-1003 |
| | 150.5' | FH STA. 3+90 |
| WHC | 39.3' | SMH-1003 |
| | 156.5' | FH STA. 3+90 |
| 118 | | |
| SHC | 60' | SMH-1003 |
| | 141.3' | FH STA. 3+90 |
| WHC | 67.5' | SMH-1003 |
| | 129.5' | FH STA. 3+90 |

PLAN
SCALE: 1" = 50'

NOTE: UNITS 125 THRU 129 WERE PROVIDED W/ PUBLIC WATER HOUSE CONNECTIONS UNDER CONT. NO. 24-4089-D.

SHC AND WHC AS BUILTS

| UNIT # | LENGTH | TO |
|--------|--------|--------------|
| 119 | | |
| SHC | 87' | SMH-1003 |
| | 116' | FH STA. 3+90 |
| WHC | 96.6' | SMH-1003 |
| | 102.6' | FH STA. 3+90 |
| 120 | | |
| SHC | 94.33' | FH STA. 3+90 |
| | 140.2' | SMH-1000 |
| WHC | 96.25' | FH STA. 3+90 |
| | 150' | SMH-1000 |
| 121 | | |
| SHC | 80' | FH STA. 3+90 |
| | 123.6' | SMH-1000 |
| WHC | 66.2' | FH STA. 3+90 |
| | 114.5' | SMH-1000 |

| UNIT # | LENGTH | TO |
|--------|--------|--------------|
| 122 | | |
| SHC | 67.5' | FH STA. 3+90 |
| | 103' | SMH-1000 |
| WHC | 61.5' | FH STA. 3+90 |
| | 93.6' | SMH-1000 |
| 123 | | |
| SHC | 58' | FH STA. 3+90 |
| | 84.5' | SMH-1000 |
| WHC | 45.3' | FH STA. 3+90 |
| | 74' | SMH-1000 |
| 124 | | |
| SHC | 56.3' | FH STA. 3+90 |
| | 50.5' | SMH-1000 |
| WHC | 44.5' | FH STA. 3+90 |
| | 53' | SMH-1000 |

| UNIT # | LENGTH | TO |
|--------|--------|--------------|
| 125 | | |
| SHC | 110.3' | SMH-100B |
| WHC | — | — |
| 126 | | |
| SHC | 93.1 | SMH-100B |
| WHC | — | — |
| 127 | | |
| SHC | 72.1' | SMH-100B |
| WHC | — | — |
| 128 | | |
| SHC | 53.5' | SMH-100B |
| WHC | — | — |
| 129 | | |
| SHC | 24.6' | SMH-100B |
| WHC | — | — |
| 130 | | |
| SHC | 110.3' | SMH-100B |
| WHC | 7.5' | FH STA. 1+45 |
| | 54' | SMH-1012 |

| UNIT # | LENGTH | TO |
|--------|--------|--------------|
| 131 | | |
| SHC | 89' | SMH-100B |
| WHC | 49.3' | FH STA. 1+45 |
| | 88.7' | SMH-1006 |
| 132 | | |
| SHC | 68.3' | SMH-100B |
| WHC | 69' | FH STA. 1+45 |
| | 73.5' | SMH-1006 |
| 133 | | |
| SHC | 48.3' | SMH-100B |
| WHC | 87.6' | FH STA. 1+45 |
| | 61.6' | SMH-1006 |
| 134 | | |
| SHC | 17.6' | SMH-100B |
| WHC | 112.5' | FH STA. 1+45 |
| | 51' | SMH-1006 |
| 135 | | |
| SHC | 64.3' | FH STA. 1+45 |
| | 8.5' | SMH-1012 |
| WHC | 46' | FH STA. 1+45 |
| | 20.5' | SMH-1012 |
| 136 | | |
| SHC | 68.6' | FH STA. 1+45 |
| | 13' | SMH-1012 |
| WHC | 64' | FH STA. 1+45 |
| | 21' | SMH-1012 |

CONTRACT NO. 24-4177-D
CHERRYTREE PARK - PHASE III
UNITS 107 THRU 160; OPEN SPACE LOT 14
AND BULK PARCELS 'B' & 'G-1'
WATER AND SEWER MAIN EXTENSIONS
HOWARD COUNTY, MARYLAND

DEPARTMENT OF PUBLIC WORKS
HOWARD COUNTY, MARYLAND
7-15-04
DATE

DEPARTMENT OF PLANNING AND ZONING
HOWARD COUNTY, MARYLAND
7/20/04
DATE

FISHER, COLLINS & CARTER, INC.
CIVIL ENGINEERING CONSULTANTS & LAND SURVEYORS
10020 WOODBURN DRIVE
ELLSWORTH CITY, MARYLAND 21042
4102 461-2000

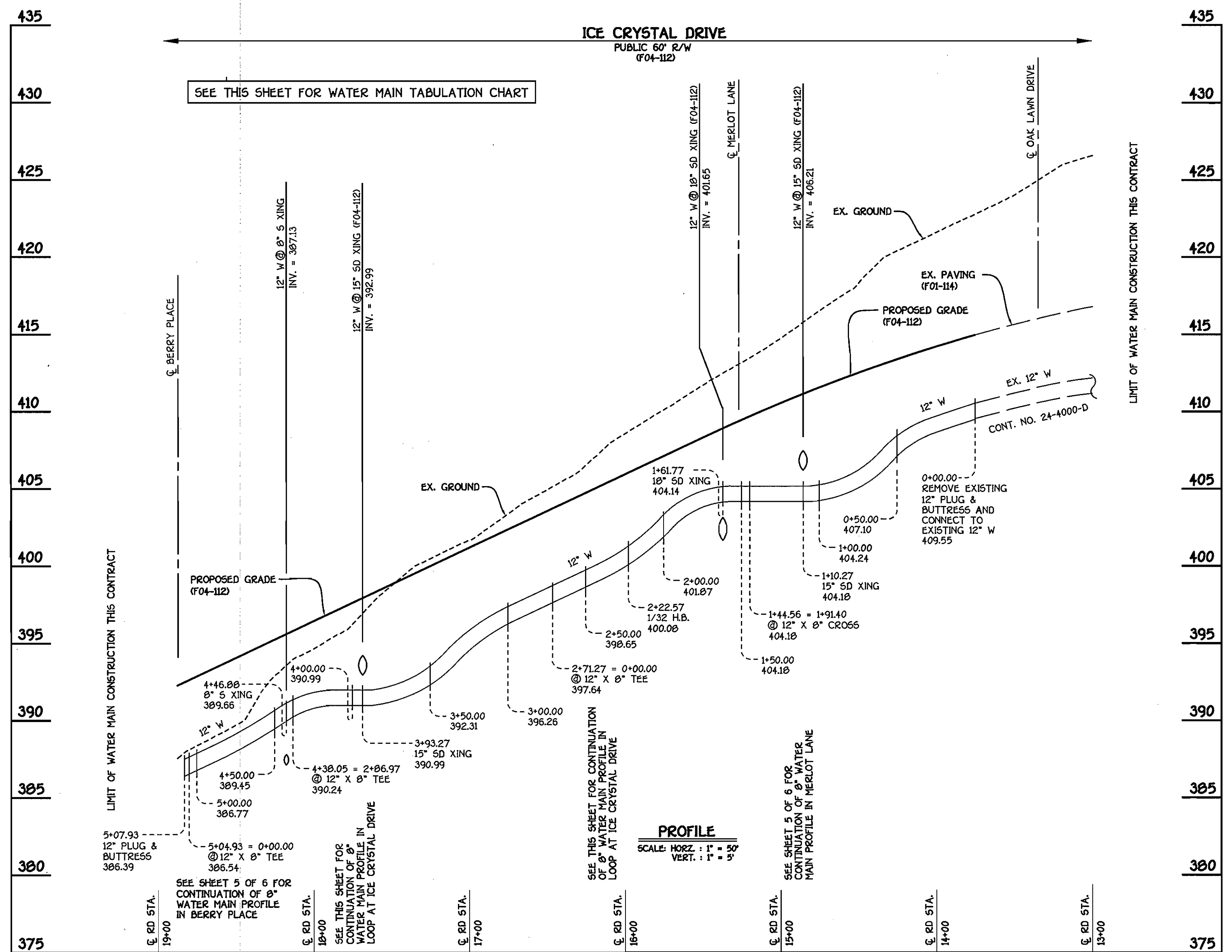
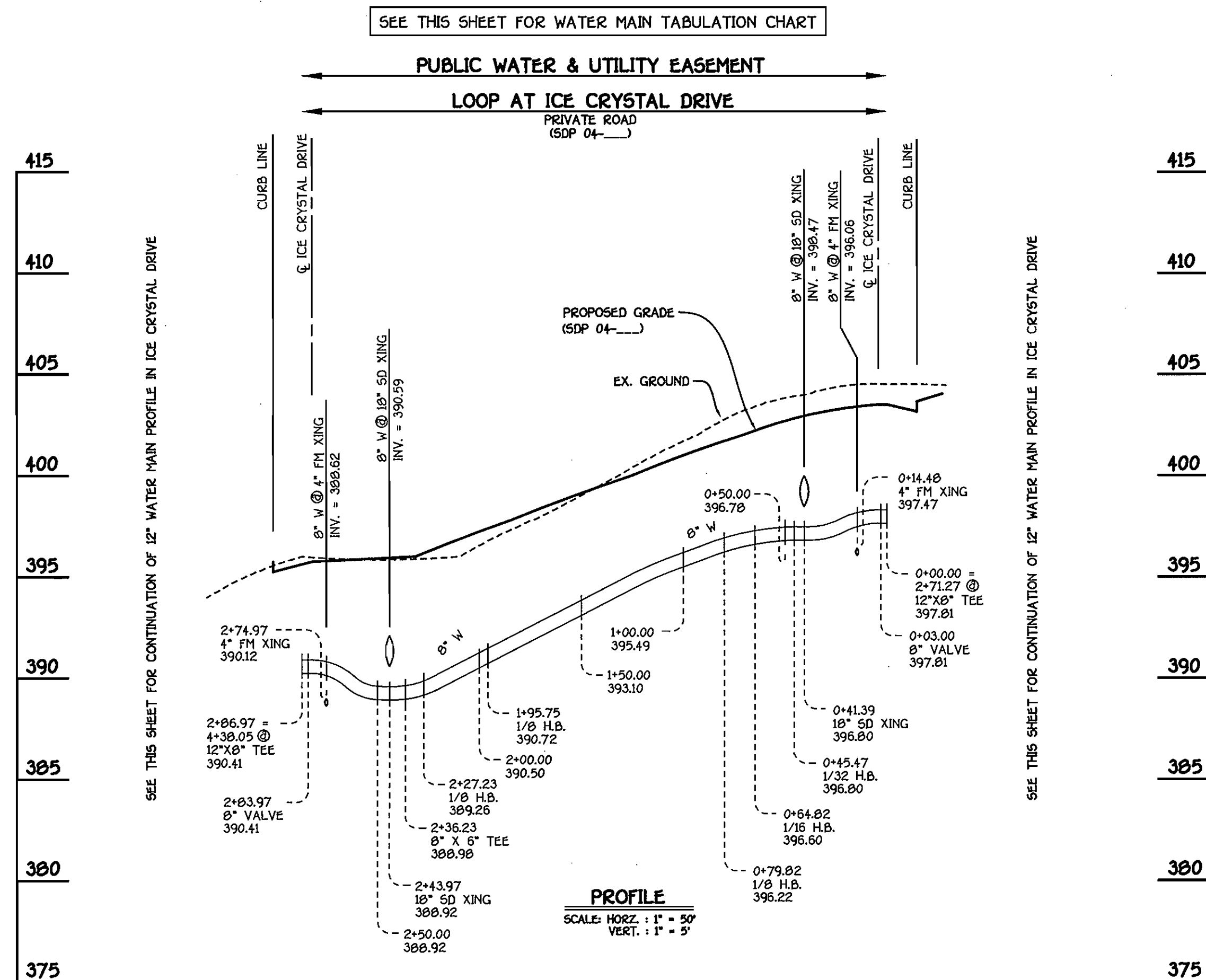


DESIGNED BY: C.L.Y.
DRAWN BY: C.L.Y.
CHECKED BY: P.W.K.
DATE: JULY, 2004
BY NO. REVISION DATE

WATER AND SEWER MAINS
PLAN VIEW
600' SCALE MAP NO. 46 BLOCK NO. 4 & 10
F.C.C. WORK ORDER NO. 30766
FILE NAME: FINAL WATER AND SEWER PLAN SHT 2

CHERRYTREE PARK - PHASE III
UNITS 107 THRU 160; OPEN SPACE LOT 14
AND BULK PARCELS 'B' & 'G-1'
CONTRACT NO. 24-4177-D
SIXTH ELECTION DISTRICT
HOWARD COUNTY, MARYLAND

SCALE
AS
SHOWN
SHEET
2 OF 6



8" WATER MAIN: LOOP AT ICE CRYSTAL DRIVE

12" WATER MAIN: ICE CRYSTAL DRIVE

AS BUILT
DATE: NOVEMBER 2008

| WATER MAIN TABULATION CHART | | | |
|----------------------------------|----------------------------|-----------|------------|
| W.M. STATION | APPURTENANCE | NORTHING | EASTING |
| 12" W : ICE CRYSTAL DRIVE | | | |
| 0+00.00 | CONNECT TO EX. 12" W | 537256.81 | 1339947.92 |
| 1+44.56 | 12" X 8" CROSSL | 537148.33 | 1339852.30 |
| 2+22.57 | 1/32 H.B. | 537089.81 | 1339800.71 |
| 2+45.67 | P.C. (CRIMP RADIUS = 380') | 537076.45 | 1339781.92 |
| 2+71.27 | 12" X 8" TEE | 537060.93 | 1339761.58 |
| 3+54.77 | P.T. (CRIMP RADIUS = 380') | 537001.42 | 1339703.23 |
| 4+38.05 | 12" X 8" TEE | 536935.30 | 1339651.80 |
| 5+04.93 | 12" X 8" TEE | 536883.33 | 1339610.49 |
| 5+07.93 | 12" PLUG AND BUTTRESS | 536880.97 | 1339608.64 |
| 8" W : LOOP AT ICE CRYSTAL DRIVE | | | |
| 0+00.00 | 12" X 8" TEE | 537060.93 | 1339761.58 |
| 0+03.00 | 8" VALVE | 537058.60 | 1339763.47 |
| 0+45.47 | 1/32 H.B. | 537025.72 | 1339730.36 |
| 0+64.82 | 1/16 H.B. | 537008.86 | 1339799.84 |
| 0+79.82 | 1/8 H.B. | 536993.96 | 1339801.64 |
| 1+95.75 | 1/8 H.B. | 536902.79 | 1339730.04 |
| 2+27.23 | 1/8 H.B. | 536899.03 | 1339698.78 |
| 2+36.23 | 8" X 6" TEE | 536904.59 | 1339691.70 |
| 2+83.97 | 8" VALVE | 536934.07 | 1339654.16 |
| 2+86.97 | 12" X 8" TEE | 536935.93 | 1339651.80 |

SHC AND WHC AS BUILTS

| UNIT # | LENGTH | TO |
|--------|--------|--------------|
| 158 | | |
| SHC | 114' | FH STA. 3+9@ |
| WHC | 36.5' | SMH-1000 |
| | 113.0' | FH STA. 3+9@ |
| | 45.5' | SMH-1000 |
| 159 | | |
| SHC | 128' | FH STA. 3+9@ |
| WHC | 54.5' | SMH-1000 |
| | 113.0' | FH STA. 3+9@ |
| | 65.3' | SMH-1000 |
| 160 | | |
| SHC | 147' | FH STA. 3+9@ |
| WHC | 71.6' | SMH-1000 |
| | 143.5' | FH STA. 3+9@ |
| | 80.2' | SMH-1000 |

SEE SHEET 2 FOR PLAN OF 12" & 8" WATER MAINS

SHC AND WHC AS BUILTS

| UNIT # | LENGTH | TO |
|--------|--------|--------------|
| 137 | | |
| SHC | 82' | FH STA. 1+12 |
| WHC | 32' | SMH-1012 |
| | 67' | FH STA. 1+12 |
| | 41' | SMH-1012 |
| 138 | | |
| SHC | 54.6' | FH STA. 1+12 |
| WHC | 51' | SMH-1012 |
| | 46.5' | FH STA. 1+12 |
| | 62' | SMH-1012 |
| 139 | | |
| SHC | 44.5' | FH STA. 1+12 |
| WHC | 56' | SMH-1000 |
| | 21.0' | FH STA. 1+12 |
| | 8' | SMH-1000 |
| 140 | | |
| SHC | 67' | FH STA. 1+12 |
| WHC | 10.5' | SMH-1004 |
| | 153' | FH STA. 2+3@ |
| | 137' | I-4 |
| 141 | | |
| SHC | 80' | FH STA. 1+12 |
| WHC | 34' | SMH-1004 |
| | 134' | FH STA. 2+3@ |
| | 123.6' | I-4 |
| 142 | | |
| SHC | 102.6' | FH STA. 1+12 |
| WHC | 51.5' | SMH-1004 |
| | 117' | FH STA. 2+3@ |
| | 110.5' | I-4 |
| 143 | | |
| SHC | 81.3' | SMH-1002 |
| WHC | 123.6' | FH STA. 1+12 |
| | 100.6' | FH STA. 2+3@ |
| | 99' | I-4 |
| 144 | | |
| SHC | 61.5' | SMH-1002 |
| WHC | 143.6' | FH STA. 1+12 |
| | 87' | FH STA. 2+3@ |
| | 91.5' | I-4 |
| 145 | | |
| SHC | 30' | SMH-1002 |
| WHC | 170.3' | FH STA. 1+12 |
| | 71' | FH STA. 2+3@ |
| | 85.16' | I-4 |
| 146 | | |
| SHC | 23' | SMH-1002 |
| WHC | 87' | FH STA. 3+9@ |
| | 69' | FH STA. 2+3@ |
| | 85.5' | I-4 |
| 147 | | |
| SHC | 41' | SMH-1002 |
| WHC | 79.5' | FH STA. 3+9@ |
| | 57' | FH STA. 2+3@ |
| | 86' | I-4 |
| 148 | | |
| SHC | 61.6' | SMH-1002 |
| WHC | 79.5' | FH STA. 3+9@ |
| | 51' | FH STA. 2+3@ |
| | 85' | I-4 |
| 149 | | |
| SHC | 93.5' | SMH-1002 |
| WHC | 91.5' | FH STA. 3+9@ |
| | 47' | FH STA. 2+3@ |
| | 82.5' | I-4 |
| 150 | | |
| SHC | 110' | FH STA. 3+9@ |
| WHC | 133.6' | SMH-1000 |
| | 106.4' | FH STA. 3+9@ |
| | 134.5' | SMH-1000 |
| 151 | | |
| SHC | 107.5' | FH STA. 3+9@ |
| WHC | 122' | SMH-1000 |
| | 86.5' | FH STA. 3+9@ |
| | 108' | SMH-1000 |
| 152 | | |
| SHC | 94.5' | FH STA. 3+9@ |
| WHC | 102' | SMH-1000 |
| | 76' | FH STA. 3+9@ |
| | 91' | SMH-1000 |
| 153 | | |
| SHC | 84.6' | FH STA. 3+9@ |
| WHC | 82.5' | SMH-1000 |
| | 68.5' | FH STA. 3+9@ |
| | 70' | SMH-1000 |
| 154 | | |
| SHC | 79.3' | FH STA. 3+9@ |
| WHC | 63.6' | SMH-1000 |
| | 63.6' | FH STA. 3+9@ |
| | 50' | SMH-1000 |
| 155 | | |
| SHC | 76' | FH STA. 3+9@ |
| WHC | 38.5' | SMH-1000 |
| | 68.9' | FH STA. 3+9@ |
| | 24' | SMH-1000 |
| 156 | | |
| SHC | 92.5' | FH STA. 3+9@ |
| WHC | 15' | SMH-1000 |
| | 70' | FH STA. 3+9@ |
| | 21' | SMH-1000 |
| 157 | | |
| SHC | 100.5' | FH STA. 3+9@ |
| WHC | 20' | SMH-1000 |
| | 96.5' | FH STA. 3+9@ |
| | 26' | SMH-1000 |

DEPARTMENT OF PUBLIC WORKS
HOWARD COUNTY, MARYLAND

DEPARTMENT OF PLANNING AND ZONING
HOWARD COUNTY, MARYLAND

FISHER, COLLINS & CARTER, INC.
CIVIL ENGINEERING CONSULTANTS & LAND SURVEYORS
CENTRAL SQUARE OFFICE PARK - 10722 BALTIMORE NATIONAL PIKE
ELLCOTT CITY, MARYLAND 21117
410-461-1899



DESIGNED BY: CLY.
DRAWN BY: CLY.
CHECKED BY: P.W.K.
DATE: JULY, 2004

WATER MAINS
PROFILES

600' SCALE MAP NO. 45 BLOCK NO. 4 & 10

F.C.C. WORK ORDER NO. 30765

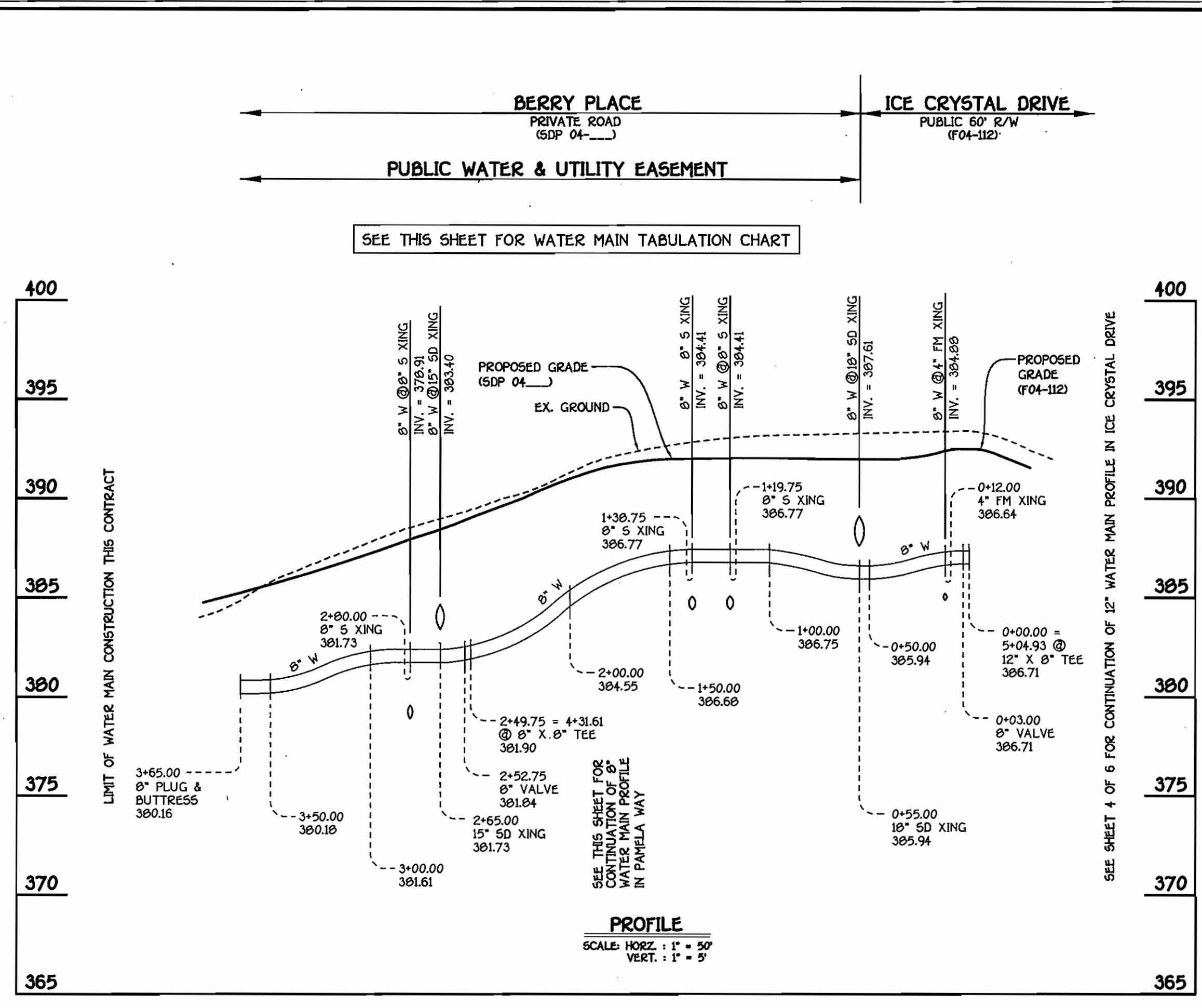
FILE NAME: FINAL WATER AND SEWER PROFILES SHT. 4

CHERRYTREE PARK - PHASE III
UNITS 107 THRU 160; OPEN SPACE LOT 14
AND BULK PARCELS 'B' & 'G-1'
CONTRACT NO. 24-4177-D
SIXTH ELECTION DISTRICT
HOWARD COUNTY, MARYLAND

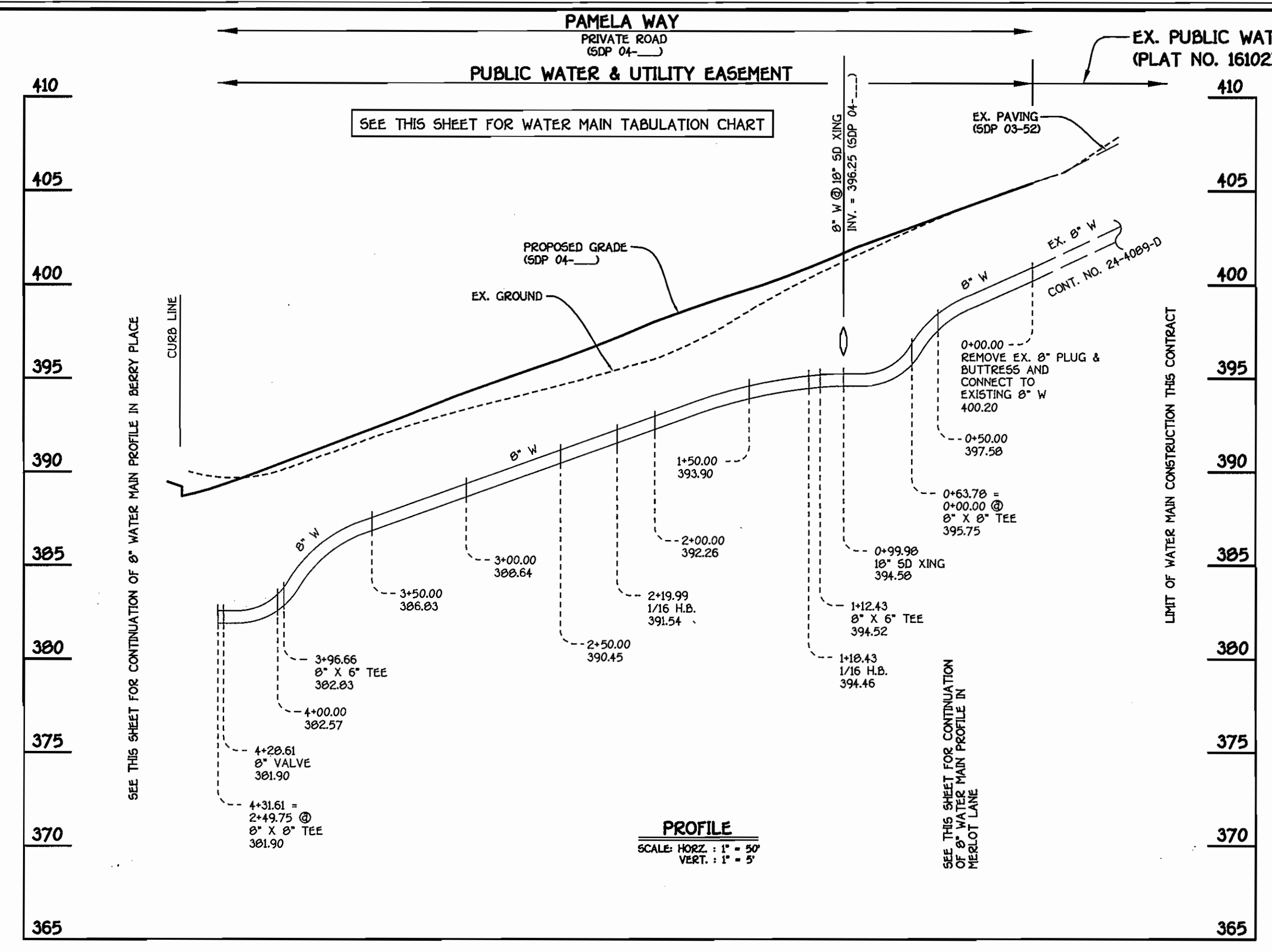
SCALE
AS
SHOWN

SHEET
4 OF 6

CONTRACT NO. 24-4177-D
CHERRYTREE PARK - PHASE III
UNITS 107 THRU 160; OPEN SPACE LOT 14
AND BULK PARCELS 'B' & 'G-1'
WATER AND SEWER MAIN EXTENSIONS
HOWARD COUNTY, MARYLAND



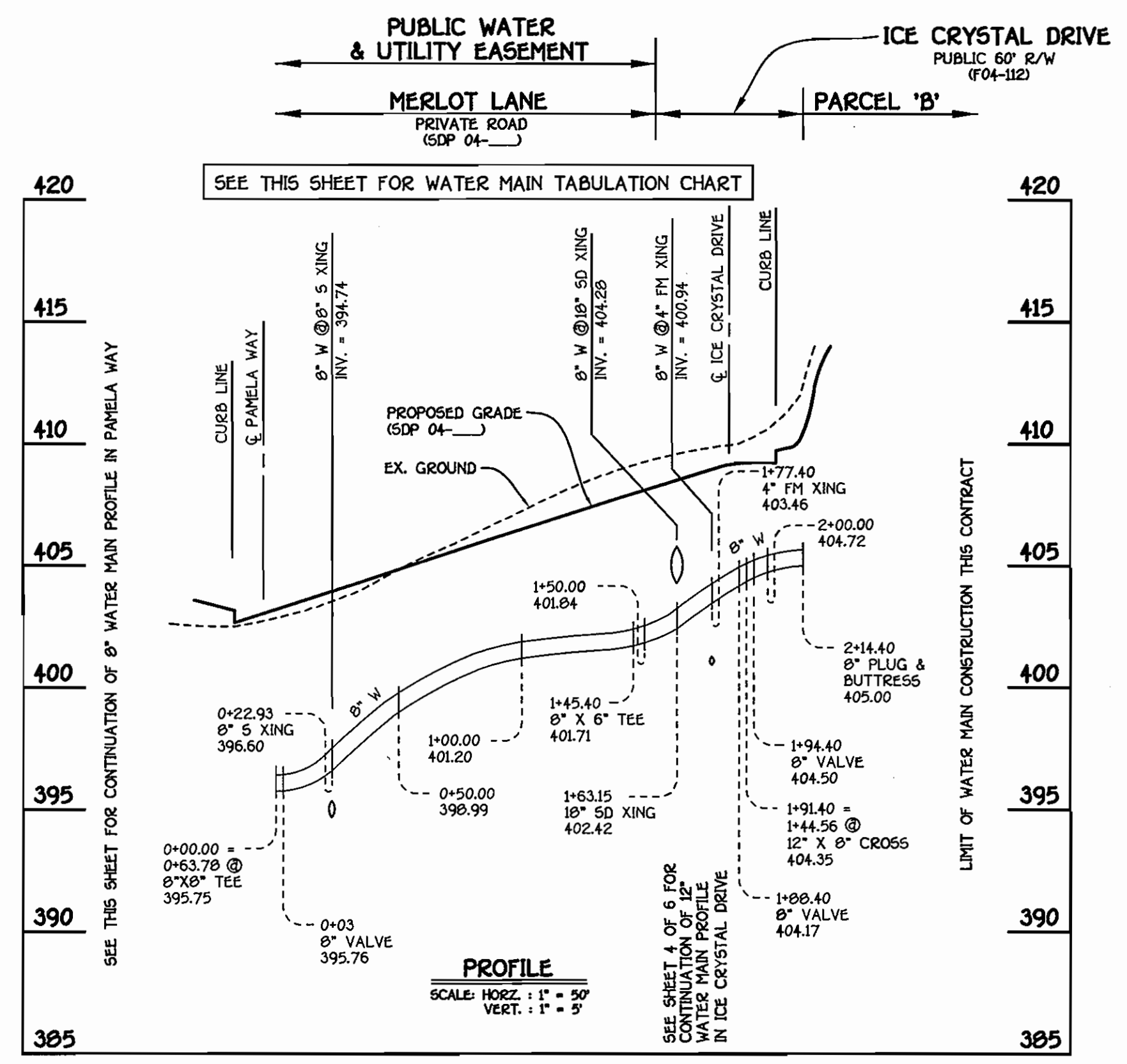
8" WATER MAIN: BERRY PLACE



8" WATER MAIN: PAMELA WAY

SEE SHEET 2 FOR PLAN OF 8" WATER MAINS

| WATER MAIN TABULATION CHART | | | |
|-----------------------------|-------------------------------|-----------|------------|
| W.M. STATION | APPURTENANCE | NORTHING | EASTING |
| 8" W : BERRY PLACE | | | |
| 0+00.00 | 12" X 8" TEE | 536883.33 | 1339610.49 |
| 0+03.00 | 8" VALVE | 536881.47 | 1339612.05 |
| 0+25.56 | P.C. (CRIMP RADIUS = 664.26') | 536867.54 | 1339630.60 |
| 1+27.97 | P.T. (CRIMP RADIUS = 664.26') | 536798.35 | 1339705.96 |
| 1+27.97 | P.C. (CRIMP RADIUS = 593') | 536798.35 | 1339705.96 |
| 2+21.27 | P.T. (CRIMP RADIUS = 593') | 536735.41 | 1339774.71 |
| 2+49.75 | 8" X 8" TEE | 536717.90 | 1339797.17 |
| 2+52.75 | 8" VALVE | 536716.04 | 1339799.53 |
| 3+65.00 | 8" PLUG AND BUTTRESS | 536647.01 | 1339808.03 |
| 8" W : PAMELA WAY | | | |
| 0+00.00 | CONNECT TO EX. 8" W | 537069.61 | 1340038.05 |
| 0+63.78 | 8" X 8" TEE | 537021.76 | 1339995.88 |
| 1+12.43 | 8" X 6" TEE | 536985.27 | 1339963.71 |
| 1+18.43 | 1/16 H.B. | 536980.77 | 1339959.74 |
| 2+19.99 | 1/16 H.B. | 536884.34 | 1339927.85 |
| 3+96.66 | 8" X 8" TEE | 536745.39 | 1339887.75 |
| 4+28.61 | 8" VALVE | 536720.26 | 1339799.02 |
| 4+31.61 | 8" X 8" TEE | 536717.90 | 1339797.17 |
| 8" W : MERLOT LANE | | | |
| 0+00.00 | 8" X 8" TEE | 537021.76 | 1339995.88 |
| 0+03.00 | 8" VALVE | 537023.75 | 1339993.63 |
| 1+45.40 | 8" X 6" TEE | 537117.91 | 1339886.80 |
| 1+88.40 | 8" VALVE | 537146.34 | 1339854.55 |
| 1+91.40 | 12" X 8" CROSS | 537148.33 | 1339852.30 |
| 1+94.40 | 8" VALVE | 537150.31 | 1339850.05 |
| 2+14.40 | 8" PLUG AND BUTTRESS | 537163.53 | 1339835.04 |



8" WATER MAIN: MERLOT LANE

AS BUILT
DATE: NOVEMBER 2008

CONTRACT NO. 24-4177-D
CHERRYTREE PARK - PHASE III
UNITS 107 THRU 160; OPEN SPACE LOT 14
AND BULK PARCELS 'B' & 'G-1'
WATER AND SEWER MAIN EXTENSIONS
HOWARD COUNTY, MARYLAND

DEPARTMENT OF PUBLIC WORKS
HOWARD COUNTY, MARYLAND

DEPARTMENT OF PLANNING AND ZONING
HOWARD COUNTY, MARYLAND

FISHER, COLLINS & CARTER, INC.
CIVIL ENGINEERING CONSULTANTS & LAND SURVEYORS
CONTINENTAL SQUARE OFFICE PARK - 10272 DALLHOPE NATIONAL PIKE
ELICOTT CITY, MARYLAND 21042
410.461.3225



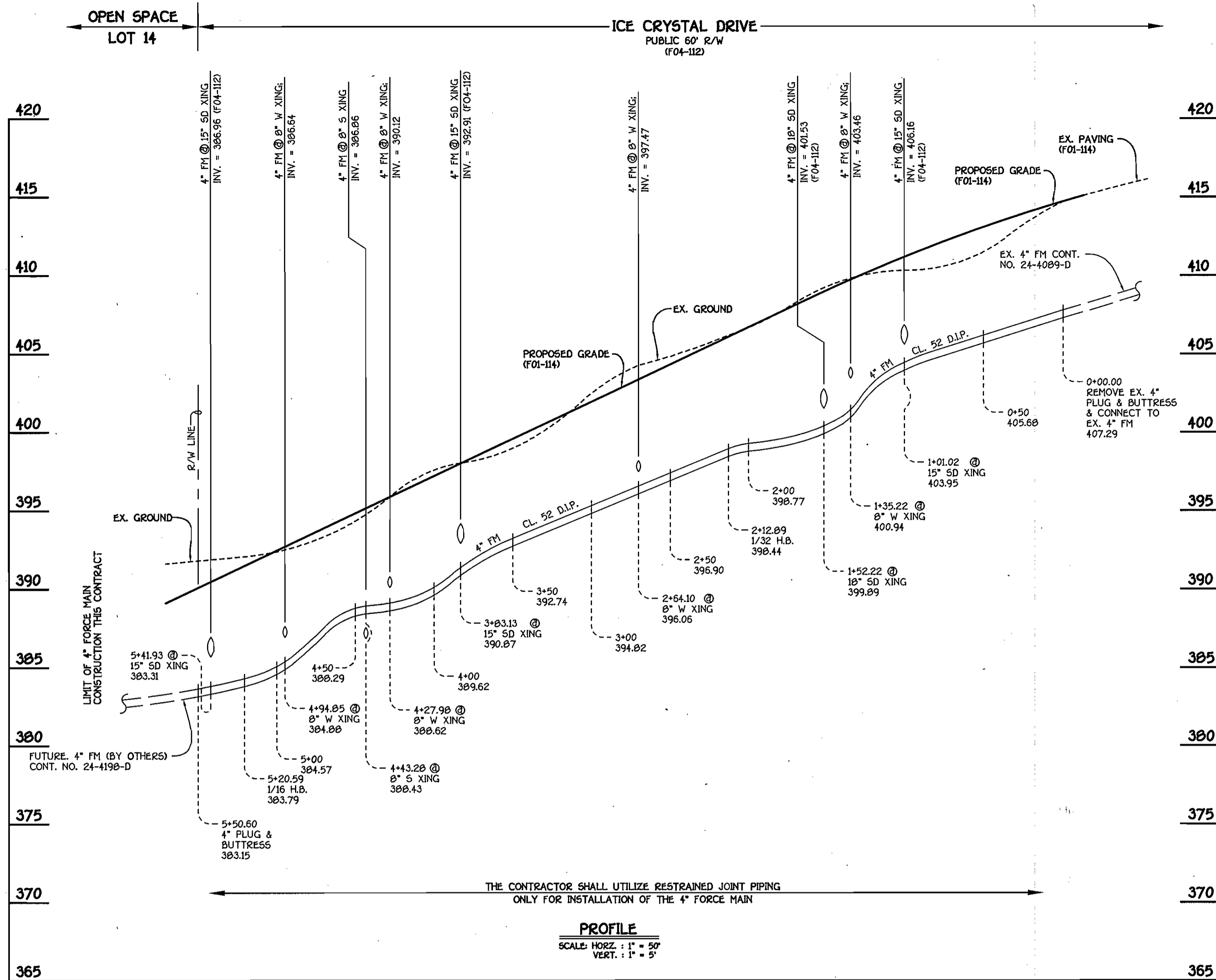
| | | | |
|--------------|------------|------|-----|
| DESIGNED BY: | CLY. | | |
| DRAWN BY: | CLY. | | |
| CHECKED BY: | P.W.K. | | |
| DATE: | JULY, 2004 | BY | NO. |
| REVISION | | DATE | |

| | |
|-----------------------|---------------------------------------|
| WATER MAINS PROFILES | |
| 600' SCALE MAP NO. | 45 BLOCK NO. 4 & 10 |
| F.C.C. WORK ORDER NO. | 30786 |
| FILE NAME: | FINAL WATER AND SEWER PROFILES SHIT 5 |

CHERRYTREE PARK - PHASE III
UNITS 107 THRU 160; OPEN SPACE LOT 14
AND BULK PARCELS 'B' & 'G-1'
CONTRACT NO. 24-4177-D
SIXTH ELECTION DISTRICT
HOWARD COUNTY, MARYLAND

SCALE AS SHOWN
SHEET 5 OF 6

K:\Drawings\330333\Cherrytree Park\WMA\SEW\Phase III\0706 Final Water Main Profiles Shit. 5 of 6.dwg 7/20/04 2:50:32 PM

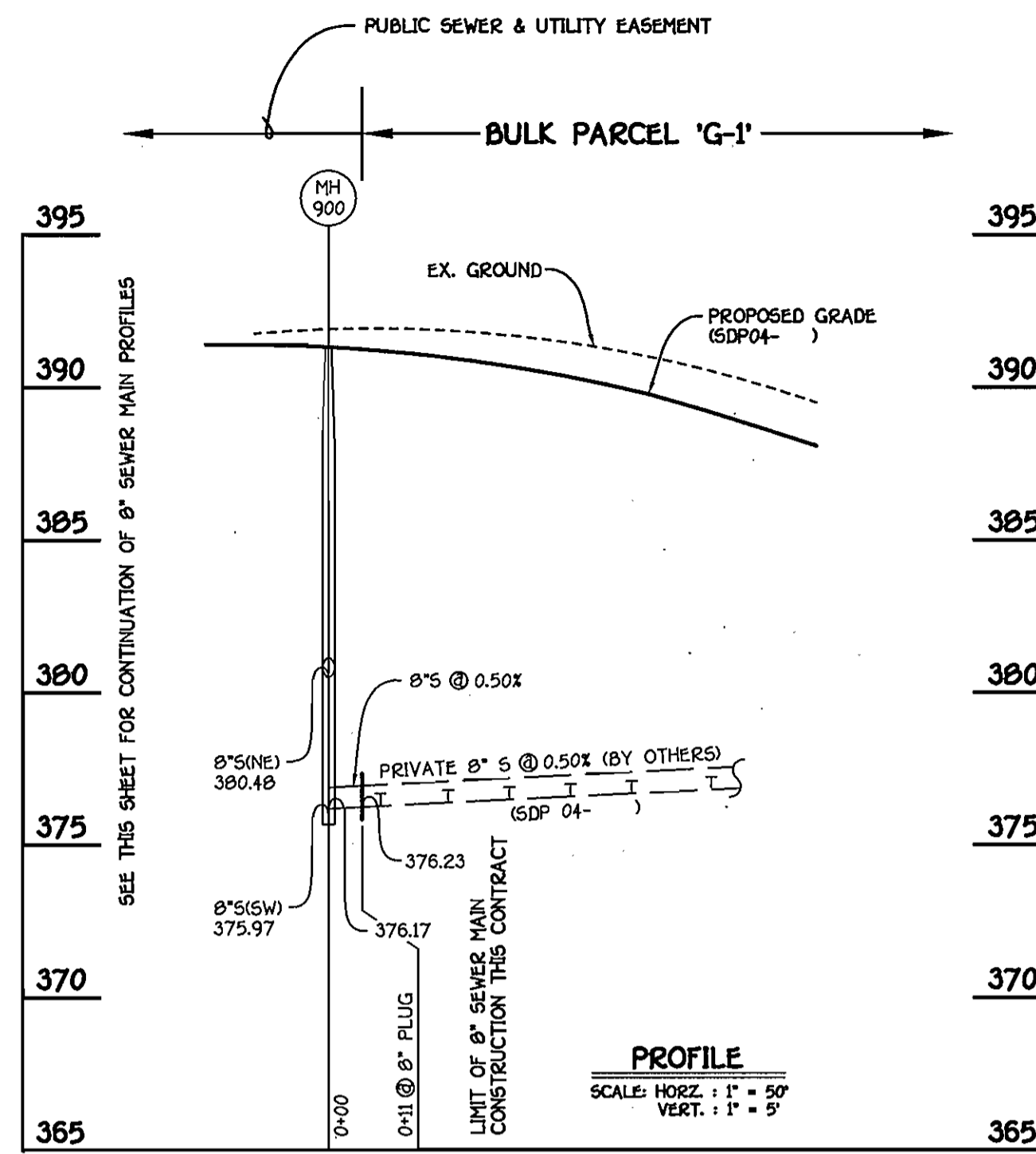


4" FORCE MAIN: ICE CRYSTAL DRIVE

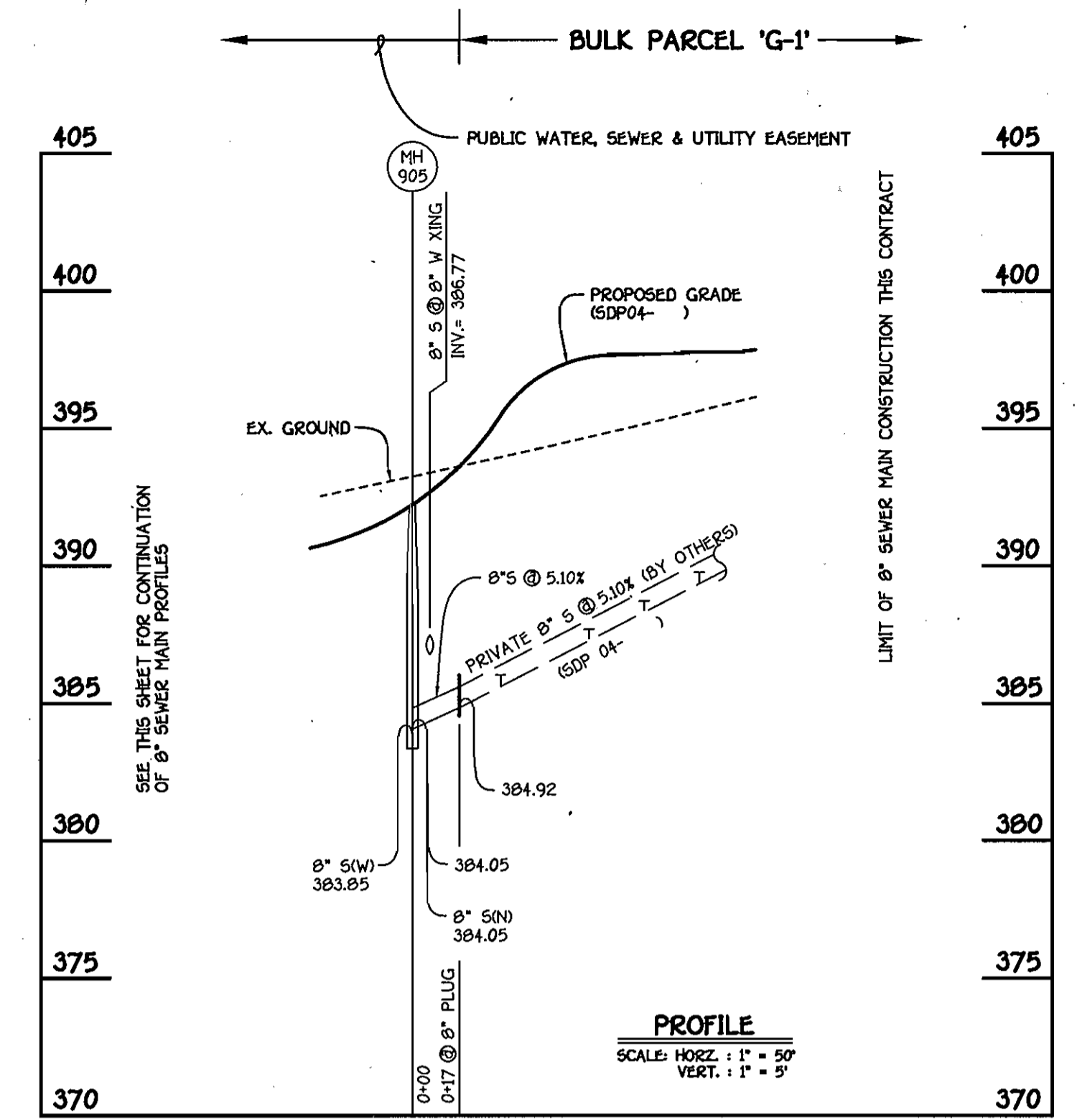
| MANHOLE TABULATION CHART | | | |
|--------------------------|-----------|------------|---------------|
| NO. | NORTHING | EASTING | RIM ELEVATION |
| 900 | 536771.84 | 1339675.15 | 391.30 |
| 905 | 536787.61 | 1339707.82 | 392.20 |
| 910 | 536939.40 | 1339641.81 | 395.27 |
| 915 | 537092.48 | 1339762.02 | 405.30 |

* SET MH RIMS FLUSH W/ PROPOSED FINISHED GRADE.

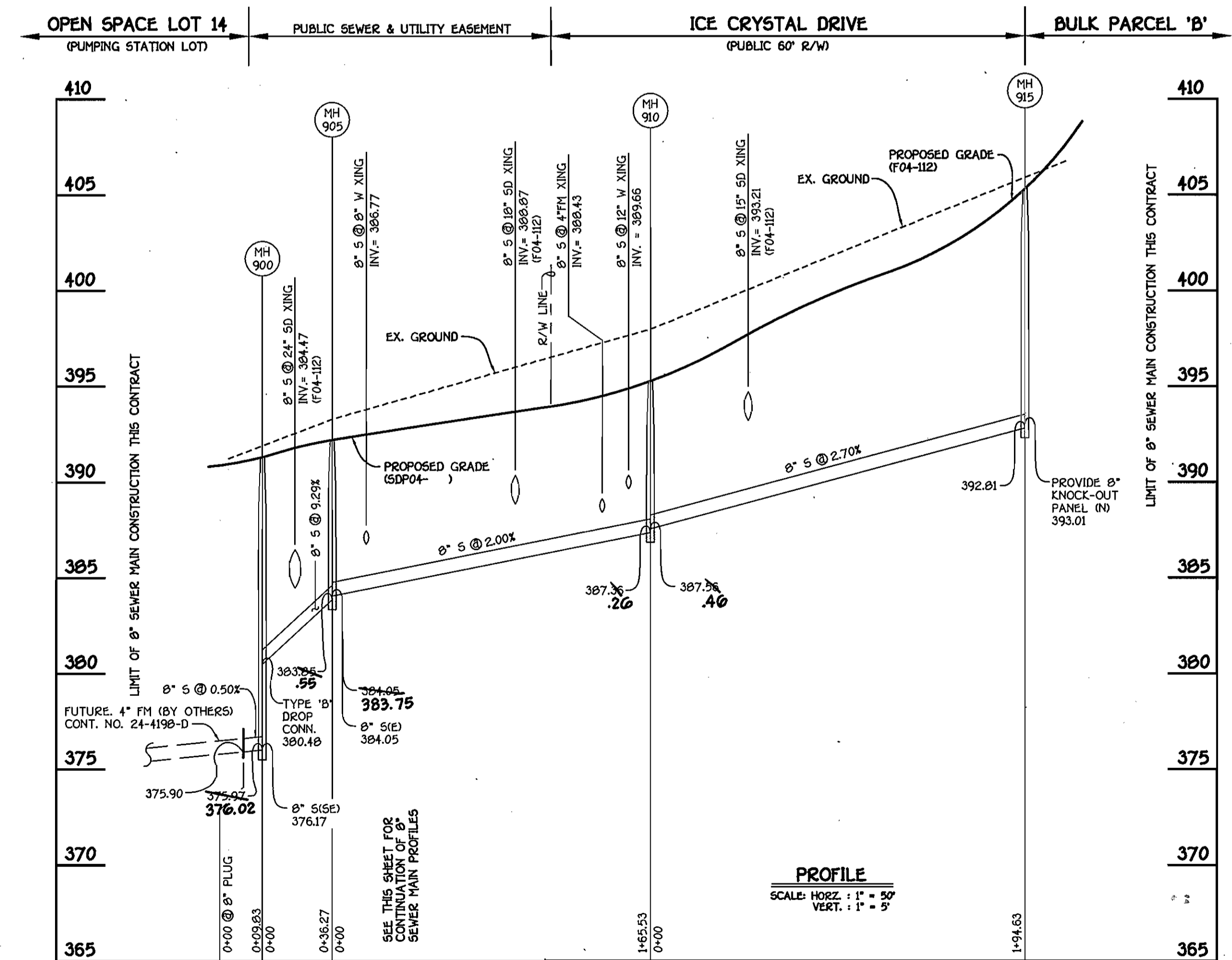
AS BUILT
DATE: NOVEMBER 2008



8" SEWER MAIN



8" SEWER MAIN



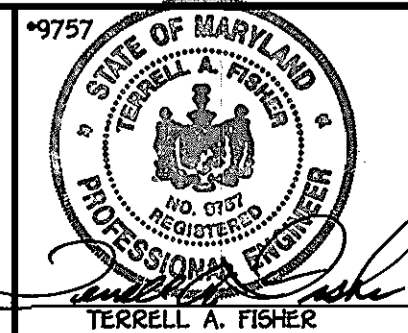
8" SEWER MAIN: PUMPING STATION LOT TO BULK PARCEL 'B'

CONTRACT NO. 24-4177-D
CHERRYTREE PARK - PHASE III
UNITS 107 THRU 160; OPEN SPACE LOT 14
AND BULK PARCELS 'B' & 'G-1'
WATER AND SEWER MAIN EXTENSIONS
HOWARD COUNTY, MARYLAND

DEPARTMENT OF PUBLIC WORKS
HOWARD COUNTY, MARYLAND

DEPARTMENT OF PLANNING AND ZONING
HOWARD COUNTY, MARYLAND

FISHER, COLLINS & CARTER, INC.
CIVIL ENGINEERING CONSULTANTS & LAND SURVEYORS
CONTONAL SQUARE OFFICE PARK - 12272 BALTIMORE NATIONAL PKWY
ELKOTT CITY, MARYLAND 21042
410-481-2225



DESIGNED BY: D.Y.B.
DRAWN BY: D.Y.B.
CHECKED BY: P.M.K.
DATE: JULY, 2004

SEWER MAINS & FORCE MAIN
PROFILES

600' SCALE MAP NO. 46 BLOCK NO. 4 & 10
F.C.C. WORK ORDER NO. 30766
FILE NAME: FINAL WATER AND SEWER PROFILES SH 6

CHERRYTREE PARK - PHASE III
UNITS 107 THRU 160; OPEN SPACE LOT 14
AND BULK PARCELS 'B' & 'G-1'
CONTRACT NO. 24-4177-D
SIXTH ELECTION DISTRICT
HOWARD COUNTY, MARYLAND

SCALE
AS
SHOWN
SHEET
6 OF 6