

CONTRACT No. 24-4173-D  
 MAPLE LAWN FARMS  
 MIDTOWN DISTRICT - AREA 2  
 LOTS 133 THRU 219, OS LOTS 220-225, COMMON OS LOTS 226-229  
 PARCELS 'A1' THRU 'A3', AND NON-BUILDABLE PARCELS 'D' & 'E'  
 HOWARD COUNTY, MARYLAND  
 DEPARTMENT OF PUBLIC WORKS

TYPE OF BUILDING	SINGLE FAMILY
NUMBER OF UNITS	27
NUMBER OF S.H.C.'s	51
NUMBER OF W.H.C.'s	51
DRAINAGE AREA	LITTLE PATUXENT
TREATMENT PLANT	LITTLE PATUXENT WWTP

ITEMS	QUANTITIES ESTIMATED	QUANTITIES		
		AS-BUILT	TYPE	MANUFACTURER/SUPPLIER
6" WATER (FH's)	48 LF	48 L.F.	DIP CL.52	GRIFFIN PIPE
8" WATER	12.42 LF	2 242 L.F.	DIP CL.52	GRIFFIN PIPE
12" WATER	1104 LF	649 L.F.	DIP CL.52	GRIFFIN PIPE
1" W/C	1530 LF	1530 L.F.	COPPER	HOWELL METAL/HUGHES SUPPLY
12"x8" CROSS	1 EA.	1 EA.	MJ CROSS	TYLER/HUGHES SUPPLY
12" VALVE	4 EA.	4 EA.	GATE	KENNEDY/HUGHES SUPPLY
12" CAP	1 EA.	3 EA.	MJ	TYLER/HUGHES SUPPLY
12" 1/4 HB	2 EA.	3 EA.	MJ	TYLER/HUGHES SUPPLY
12" 1/8 HB	2 EA.	2 EA.	MJ	TYLER/HUGHES SUPPLY
12" 1/32 HB	1 EA.	1 EA.	MJ	TYLER/HUGHES SUPPLY
12" x 12" T	1 EA.	1 EA.	MJ	TYLER/HUGHES SUPPLY
2" x 12" Reducer	1 EA.	1 EA.	MJ	TYLER/HUGHES SUPPLY
8" 1/2 HB	5 EA.	5 EA.	MJ	TYLER/HUGHES SUPPLY
8" 1/8 HB	1 EA.	1 EA.	MJ	TYLER/HUGHES SUPPLY
8" 1/32 HB	2 EA.	2 EA.	MJ	TYLER/HUGHES SUPPLY
8" x 8" T	3 EA.	3 EA.	MJ	TYLER/HUGHES SUPPLY
8" x 6" T (FHT)	4 EA.	3 EA.	MJ	TYLER/HUGHES SUPPLY
8" VALVE	7 EA.	8 EA.	MJ	TYLER/HUGHES SUPPLY
8" CAP	3 EA.	3 EA.	MJ	TYLER/HUGHES SUPPLY
6" VALVE (FHV)	4 EA.	3 EA.	GATE	KENNEDY/HUGHES SUPPLY
6" Division Valve	1 EA.	1 EA.	GATE	KENNEDY/HUGHES SUPPLY
FIRE HYDRANT - 6.0'	1 EA.	1 EA.	C 502	KENNEDY/HUGHES SUPPLY
FIRE HYDRANT - 7.0'	2 EA.	2 EA.	C 502	KENNEDY/HUGHES SUPPLY
8" DIP SEWER	147 L.F.	147 L.F.	DIP CL.52	GRIFFIN PIPE
8" PVC SEWER	2012 LF	1807 L.F.	PVC SDR 35	DIAMOND/HUGHES SUPPLY
4" PVC (DHC)	101 LF	96 L.F.	PVC SDR 35	DIAMOND/HUGHES SUPPLY
4" PVC (SHC)	1314 LF	1322 L.F.	PVC SDR 35	DIAMOND/HUGHES SUPPLY
M/S	23 EA.	23 EA.	PRECAST	ATLANTIC CONCRETE
DROP	1 EA.	1 EA.	PRECAST	ATLANTIC CONCRETE
8" STOPPER	4 EA.	4 EA.	SDR 35 CAP	HARCO/HUGHES SUPPLY

NAME OF UTILITY CONTRACTOR: GAINES AND CO., REISTERSTOWN MD.  
 SURVEY AND CHECKBOX: AS-BUILT DATE: 9-13-04

GENERAL NOTES

- PART I**
- APPROXIMATE LOCATIONS OF EXISTING MAINS ARE SHOWN. THE CONTRACTOR SHALL TAKE ALL NECESSARY PRECAUTIONS TO PROTECT EXISTING MAINS AND SERVICES AND MAINTAIN UNINTERRUPTED SUPPLY. ANY DAMAGE INCURRED SHALL BE REPAIRED IMMEDIATELY TO THE SATISFACTION OF THE ENGINEER AT THE CONTRACTOR'S EXPENSE.
  - ALL HORIZONTAL CONTROLS ARE BASED ON MARYLAND STATE COORDINATES, NAD 83/91.
  - ALL VERTICAL CONTROLS ARE BASED ON NAVD 88.
  - ALL PIPE ELEVATIONS SHOWN ARE INVERT ELEVATIONS UNLESS OTHERWISE NOTED ON THE PLANS.
  - CLEAR ALL UTILITIES BY A MINIMUM OF 12". CLEAR ALL POLES BY 5'-0" MINIMUM OR TUNNEL AS REQUIRED UNLESS OTHERWISE NOTED. THE OWNER HAS CONTACTED THE UTILITY COMPANIES AND HAS MADE ARRANGEMENTS FOR BRACING OF POLES AS SHOWN ON THE DRAWINGS. IN THE EVENT THE CONTRACTOR'S WORK REQUIRES THE BRACING OF ADDITIONAL POLES, ANY COST INCURRED BY THE OWNER FOR THE BRACING OF ADDITIONAL POLES OR DAMAGES SHALL BE DEDUCTED FROM MONIES OWED THE CONTRACTOR. THE CONTRACTOR SHALL COORDINATE WITH THE UTILITY COMPANIES TO SCHEDULE THE BRACING OF THE POLES.
  - FOR DETAILS NOT SHOWN ON THE DRAWINGS, AND FOR MATERIALS AND CONSTRUCTION METHODS USE HOWARD COUNTY DESIGN MANUAL, VOLUME IV, STANDARD SPECIFICATIONS AND DETAILS FOR CONSTRUCTION (LATEST EDITION). THE CONTRACTOR SHALL HAVE A COPY OF VOLUME IV ON THE JOB.
  - WHERE TEST PITS HAVE BEEN MADE ON EXISTING UTILITIES, THEY ARE NOTED BY THE SYMBOL (P) AT THE LOCATIONS OF THE TEST PIT. A NOTE OR NOTES CONTAINING THE RESULTS OF THE TEST PIT OR PITS IS INCLUDED ON THE DRAWINGS. EXISTING UTILITIES IN THE VICINITY OF THE PROPOSED WORK FOR WHICH TEST PITS HAVE NOT BEEN DUG SHALL BE LOCATED BY THE CONTRACTOR TWO WEEKS IN ADVANCE OF CONSTRUCTION OPERATIONS AT HIS OWN EXPENSE.
  - THE CONTRACTOR SHALL NOTIFY THE FOLLOWING UTILITY COMPANIES OR AGENCIES AT LEAST (5) WORKING DAYS BEFORE STARTING WORK SHOWN ON THESE PLANS:
 

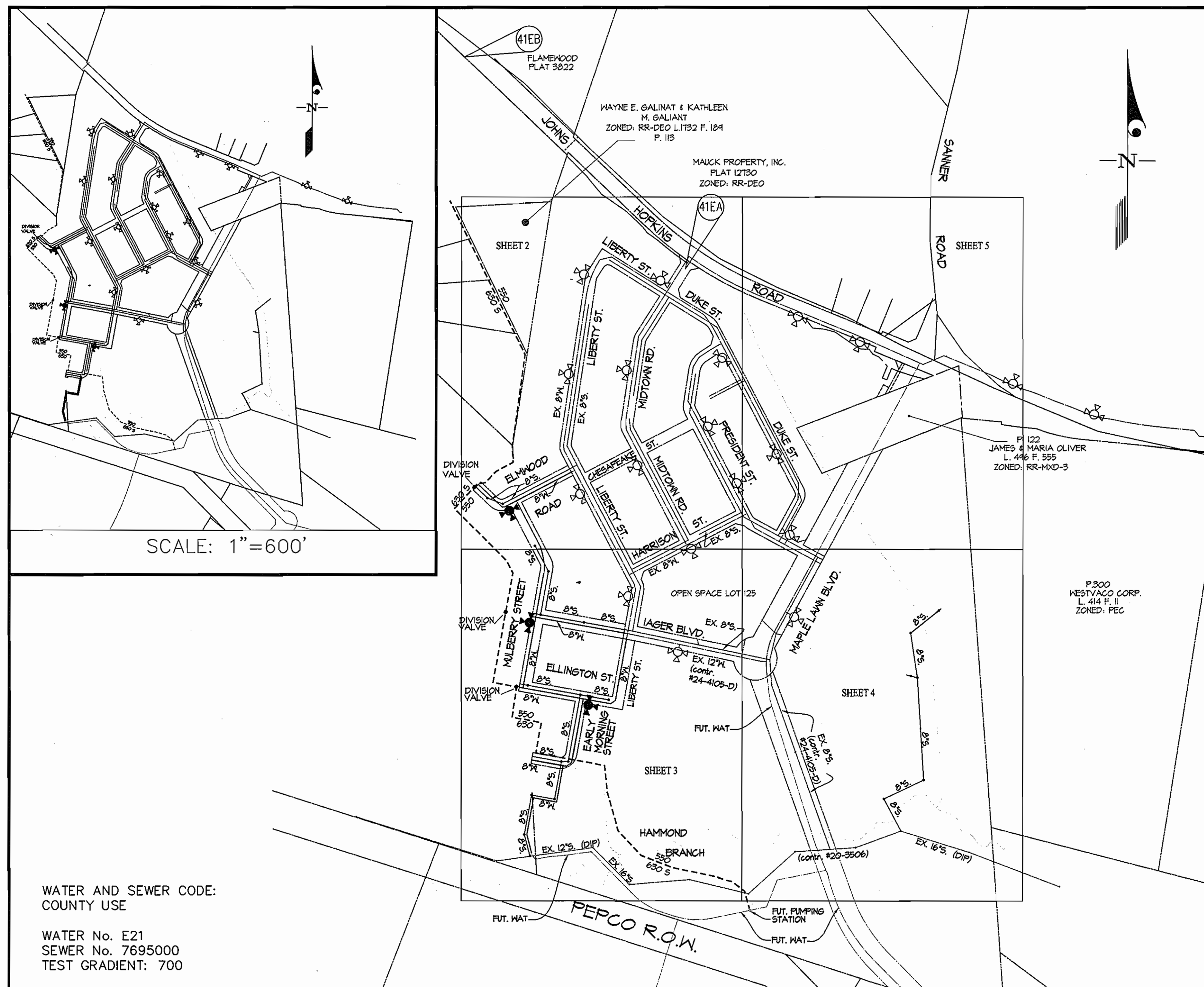
AT&T	1-800-252-1133
BGE (CONTRACTOR SERVICES)	410-850-4620
BGE (UNDER GROUND DAMAGE CONTROL)	410-181-9068
BUREAU OF UTILITIES	410-313-4900
COLONIAL PIPELINE CO.	410-785-1340
MISS UTILITY	1-800-251-TTTT
STATE HIGHWAY ADMINISTRATION	410-531-5533
VERIZON	1-800-743-0033/410-224-4210
  - TREES AND SHRUBS ARE TO BE PROTECTED FROM DAMAGE TO MAXIMUM EXTENT. TREES AND SHRUBS LOCATED WITHIN THE CONSTRUCTION STRIP ARE NOT TO BE REMOVED OR DAMAGED BY THE CONTRACTOR.
  - THE CONTRACTOR SHALL REMOVE TREES, STUMPS AND ROOTS ALONG LINE OF EXCAVATION. PAYMENT FOR SUCH REMOVAL SHALL BE INCLUDED IN THE UNIT PRICE BID FOR CONSTRUCTION OF THE MAIN.
  - THE CONTRACTOR SHALL NOTIFY THE BUREAU OF HIGHWAYS, HOWARD COUNTY, AT 410-313-2450 AT LEAST FIVE (5) WORKING DAYS BEFORE ANY OPEN CUTTING OR BORING/JACKING OF ANY COUNTY ROAD OR BORING/JACKING OPERATION ON COUNTY ROADS FOR LAYING WATER/SEWER MAINS OR HOUSE CONNECTIONS. THE APPROVAL OF THESE DRAWINGS WILL CONSTITUTE COMPLIANCE WITH DPM REQUIREMENT PER SECTION 18.11(A) OF THE HOWARD COUNTY CODE.
  - ALL BUILDABLE LOTS SHOWN HEREON SHALL HAVE ONE (1) FOOT WIDE PUBLIC EASEMENT ADJACENT TO THE PUBLIC ROAD RIGHT OF WAY, FOR THE PURPOSE OF SIDEWALK MAINTENANCE, WATER HOUSE CONNECTION AND SEWER HOUSE CONNECTION.

PART II - WATER

- ALL WATER MAINS TO BE D.I.P. CLASS 52 UNLESS OTHERWISE NOTED.
- TOPS OF ALL WATER MAINS SHALL HAVE A MINIMUM OF 3'-6" COVER UNLESS OTHERWISE NOTED.
- VALVES ADJACENT TO TEES SHALL BE STRAPPED TO TEES.
- ALL FITTINGS SHALL BE BUTTRESSED OR ANCHORED WITH CONCRETE IN ACCORDANCE WITH THE STANDARD DETAILS UNLESS OTHERWISE PROVIDED FOR ON THE DRAWINGS.
- FIRE HYDRANTS SHALL BE SET TO THE BURY LINE ELEVATIONS SHOWN ON THE DRAWINGS. ALL FIRE HYDRANTS SHALL BE INSTALLED IN ACCORDANCE WITH STANDARD DETAILS. SOIL AROUND THE FIRE HYDRANT SHALL BE COMPACTED IN ACCORDANCE WITH SECTION 1000 AND 1005 OF THE STANDARD SPECIFICATIONS.
- THE CONTRACTOR SHALL NOT OPERATE ANY WATER MAIN VALVES ON THE EXISTING WATER SYSTEM.
- ALL WATER HOUSE CONNECTIONS SHALL BE FOR INSIDE METER SETTING UNLESS OTHERWISE NOTED ON PLANS OR IN SPECIFICATIONS.
- FOR SPRINKLER SYSTEM FOR ALL TOWNHOMES OR MULTI-FAMILY DWELLING UNITS SHOULD HAVE A MINIMUM OF 1' CONNECTION WITH 3/4" METER.

PART III - SEWER

- ALL SEWER MAINS SHALL BE D.I.P. OR P.V.C. UNLESS OTHERWISE NOTED.
- ALL MANHOLES SHALL BE 4'-0" INSIDE DIAMETER UNLESS OTHERWISE NOTED.
- FORCE MAINS SHALL BE D.I.P. ONLY.
- MANHOLES SHOWN WITH 12" AND 16" WALLS ARE FOR BRICK MANHOLES ONLY.
- MANHOLES DESIGNATED "WT" IN PLAN AND PROFILE SHALL HAVE WATERTIGHT FRAME AND COVER, STANDARD DETAIL 66-52. WHERE WATERTIGHT MANHOLE FRAMES AND COVERS ARE USED, SET TOP OF FRAME 1'-6" ABOVE FINISHED GRADE UNLESS OTHERWISE NOTED ON THE DRAWINGS.
- HOUSE(S) WITH THE SYMBOL "C.N.S." INDICATES THAT THE CELLAR CANNOT BE SERVED.



VICINITY MAP  
 SCALE: 1"=300'

**AS BUILT**  
 DATE: SEPT. 13, 2004

SEDIMENT CONTROL MEASURES WILL BE IMPLEMENTED IN ACCORDANCE WITH SECTION 214 OF THE SPECIFICATIONS, WITH ROAD DRAWINGS PLAN F-04-12; DRAWINGS 1 THRU 12 FOR SEDIMENT & EROSION CONTROL, AND WITH THESE PLANS.

REVIEWED FOR HOWARD SOIL CONSERVATION DISTRICT AND MEETS TECHNICAL REQUIREMENT.

*Jim Meyer* 4/2/04  
 SIGNATURE DATE  
 S.D.A. NATURAL RESOURCES CONSERVATION SERVICE

THIS DEVELOPMENT PLAN IS APPROVED FOR SOIL EROSION AND SEDIMENT CONTROL BY THE HOWARD SOIL CONSERVATION DISTRICT.

APPROVED: *John R. Roberts* 4/2/04  
 SIGNATURE DATE  
 HOWARD S.C.D.

DEPARTMENT OF PUBLIC WORKS  
 HOWARD COUNTY, MARYLAND

DEPARTMENT OF PLANNING AND ZONING  
 HOWARD COUNTY, MARYLAND

**GLWGUTSCHICK LITTLE & WEBER, PA.**  
 CIVIL ENGINEERS, LAND SURVEYORS, LAND PLANNERS, LANDSCAPE ARCHITECTS  
 3909 NATIONAL DRIVE - SUITE 250 - BURTONSVILLE OFFICE PARK  
 BURTONSVILLE, MARYLAND 20866  
 TEL: 301-421-4024 FAX: 410-880-1820 DC/VA: 301-989-2524 FAX: 301-421-4186



DES:	d.e.v.	Adjust quantities per revisions	10/14/04
DRN:			
CHK:			
DATE:	3/04		
BY:	KCI	AS-BUILT DATA SHOWN	9/26/07
NO:		REVISION	DATE

TITLE SHEET  
 SCALE: AS SHOWN

600' SCALE MAP NO. 46 BLOCK NO. 4

**MAPLE LAWN FARMS**  
 MIDTOWN DISTRICT - AREA 2  
 LOTS 133 THRU 219, OPEN SPACE LOTS 220-225  
 COMMON OPEN SPACE LOTS 226-229  
 PARCELS 'A1' THRU 'A3' AND NON-BUILDABLE PARCELS 'D' & 'E'  
 HOWARD COUNTY, MARYLAND  
 ELECTION DISTRICT No. 5  
 CONTRACT No. 24-4173-D

SCALE AS SHOWN

SHEET 1 OF 7

GLW FILE #03001  
 WS1.dwg

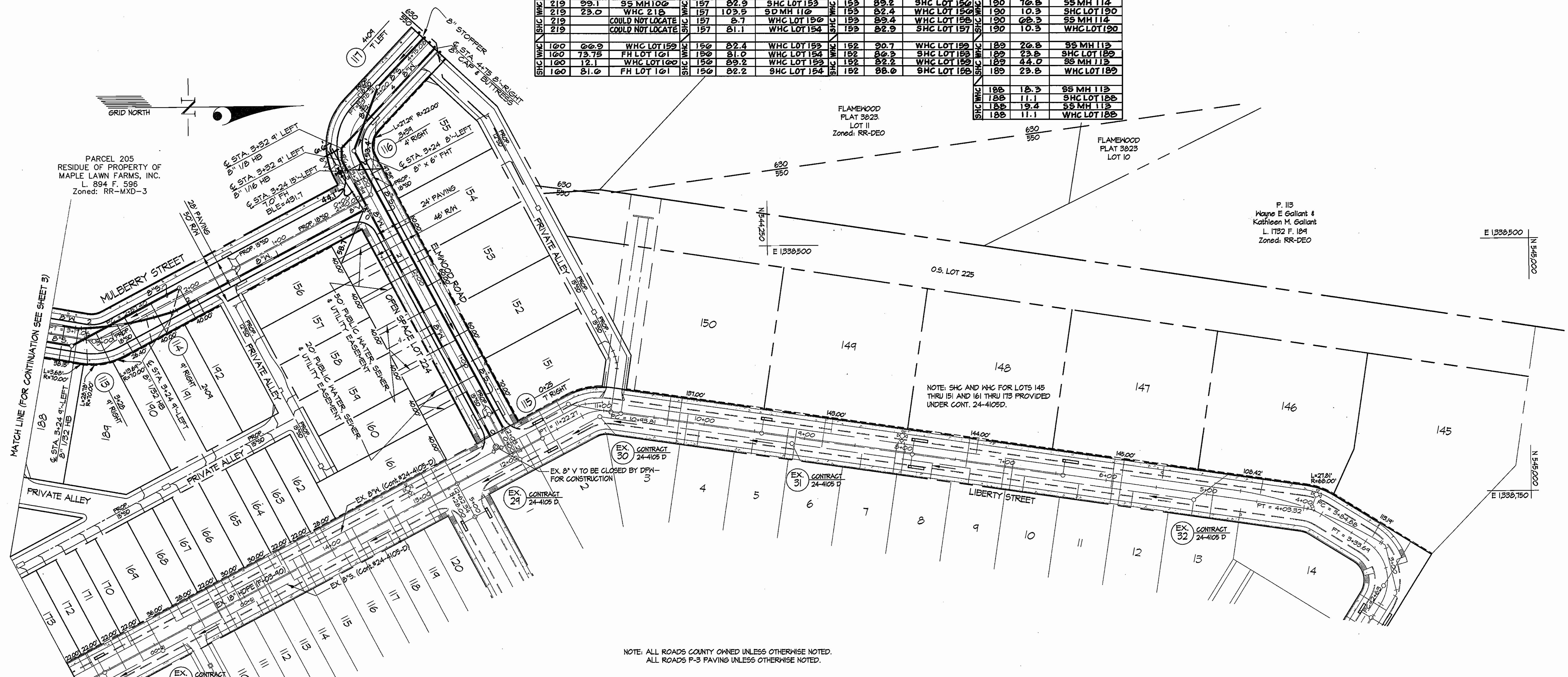
**SHC AND WHC AS BUILT**

UNIT#	LENGTH(FT)	TO	UNIT#	LENGTH(FT)	TO	UNIT#	LENGTH(FT)	TO	UNIT#	LENGTH(FT)	TO
217		COULD NOT LOCATE	159	90.7	WHC 152	155	33.8	SS MH	192	37.2	SS MH 114
217		COULD NOT LOCATE	159	82.2	SHC 152	155	28.4	SS MH	192	10.9	SHC LOT 192
217	107.8	SS MH 100	159	40.4	SHC 152	155	24.9	SS MH	192	35.2	SS MH 114
217	40.7	SHC 210	159	99.1	SS RAIN LEADER	155	41.2	SHC LOT 154	192	10.9	WHC LOT 192
218	50.2	SS MH 100	158	88.0	SHC LOT 152	154	81.1	WHC LOT 157	191	53.9	SS MH 114
218	7.3	WHC 219	158	93.7	WHC LOT 153	154	81.0	WHC LOT 150	191	10.4	SHC LOT 191
218	71.4	SS MH 100	158	102.9	WHC LOT 153	154	82.2	SHC LOT 150	191	40.9	SS MH 114
218	14.9	WHC 218	158	89.4	SHC LOT 153	154	41.2	SHC LOT 159	191	10.4	WHC LOT 191
219	99.1	SS MH 100	157	82.9	SHC LOT 153	153	88.2	SHC LOT 150	190	70.8	SS MH 114
219	23.0	WHC 219	157	103.5	SS MH 110	153	82.4	WHC LOT 150	190	10.3	SHC LOT 190
219		COULD NOT LOCATE	157	8.7	WHC LOT 150	153	89.4	WHC LOT 150	190	60.3	SS MH 114
219		COULD NOT LOCATE	157	81.1	WHC LOT 154	153	82.9	SHC LOT 157	190	10.3	WHC LOT 190
100	00.9	WHC LOT 159	150	82.4	WHC LOT 153	152	90.7	WHC LOT 159	189	20.8	SS MH 113
100	73.75	FR LOT 101	150	81.0	WHC LOT 154	152	80.3	SHC LOT 159	189	23.0	SHC LOT 189
100	12.1	WHC LOT 100	150	89.2	WHC LOT 153	152	82.2	WHC LOT 159	189	44.0	SS MH 113
100	81.0	FR LOT 101	150	82.2	SHC LOT 154	152	88.0	SHC LOT 158	189	23.8	WHC LOT 189

SEWER HOUSE CONNECTIONS  
MINIMUM CELLAR ELEVATIONS  
and INVERT ELEVATIONS

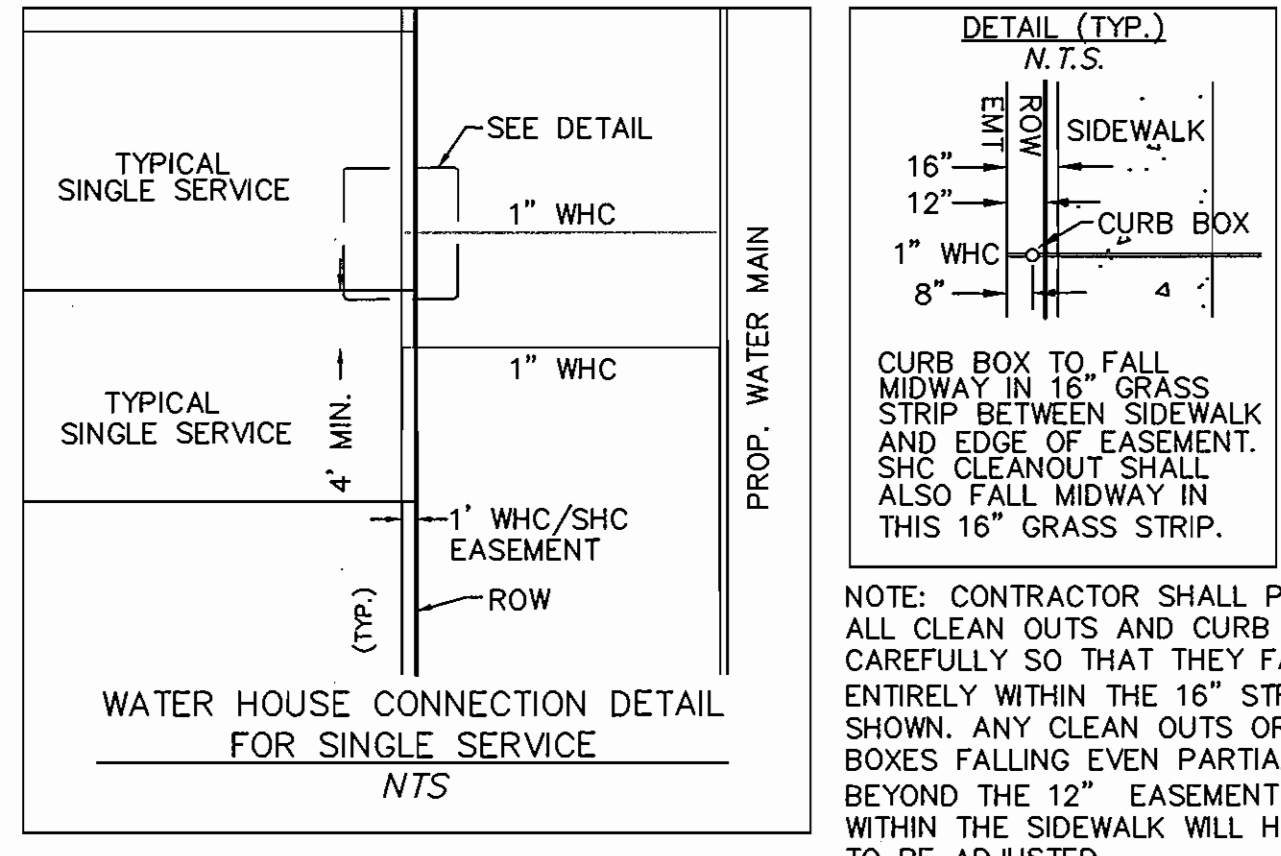
LOT	MINIMUM CELLAR ELEV. LINE	ELEV. PROP. LINE
152	414.84	411.14
153	415.84	412.14
154	417.11	414.71
155	419.17	415.97
156	420.45	415.55
157	417.25	414.35
158	416.05	413.15
159	414.85	411.95
160	413.65	410.75
160	405.85	402.51
161	406.51	403.11
162	406.92	403.66
163	407.55	404.24
164	408.24	404.98
165	408.96	405.70
166	409.62	406.36
167	410.63	407.54
168	415.51	412.57
169	416.41	413.15
170	417.07	413.81
171	417.65	414.34
172	418.61	415.35
173	411.18	408.28
174	410.28	407.36
175	409.65	406.13
176	408.75	405.83
177	407.94	405.02
178	407.04	404.12
179	406.87	403.95
200	406.03	403.11
201	405.93	402.61
202	404.84	401.97
203	404.37	401.45
204	403.84	400.97
205	403.65	400.73
206	398.00	394.51
207	399.00	395.90
208	400.00	396.91
209	399.40	396.54
210	401.34	397.83
211	402.77	398.41
212	404.28	400.92
213	405.61	402.25
214	399.00	395.40
215	398.00	394.40
216	396.00	392.40
217	395.00	391.40
218	392.55	389.28
219	391.86	388.61

NOTE: ALL SEWER HOUSE CONNECTIONS ARE 4"  
NOTE: ALL WATER HOUSE CONNECTIONS ARE 1"



**SHC AND WHC AS BUILT**

UNIT#	LENGTH(FT)	TO	UNIT#	LENGTH(FT)	TO	UNIT#	LENGTH(FT)	TO	UNIT#	LENGTH(FT)	TO
203	7.3	WHC 204	190	03.7	WHC 185	202	9.9	SHC 202	211	7.1	WHC 212
203	59.5	SS MH 3	190	10.1	SHC 190	202	0.8	WHC 201	211	19.3	SHC 211
203	08.2	SS MH 3	190	01.3	SHC 185	202	75.7	SHC 201	211	19.3	WHC 211
203	7.9	WHC 203	190	01.4	WHC 185	202	9.9	WHC 202	211	27.4	WHC 212
204	52.7	SS MH 3	197	75.0	SHC 185	206	18.0	SS MH 108	212	27.4	SHC 211
204	7.3	WHC 203	197	00.1	SHC 184	206	10.3	SHC 200	212	7.1	WHC 211
204	48.1	SS MH 3	197	03.9	SHC 185	206	10.9	SS MH 108	212	17.9	WHC 212
204	17.3	WHC 203	197	40.1	WHC 190	206	10.3	SHC 200	212	50.8	SHC ACROSS FROM 212
205	37.3	SS MH	198	02.3	SHC 183	207	07.9	SS MH 108	213	8.1	WHC 211
205	17.3	SHC 204	198	7.4	SHC 182	207	0.4	WHC 208	213	8.4	SHC 213
198	7.4	WHC 198	198	7.4	WHC 198	207	0.4	WHC 208	213	8.4	WHC 213
198	04.9	SHC 183	198	04.9	SHC 183	207	0.4	WHC 208	213	20.1	WHC 211
193	07.8	WHC 187	199	08.9	SHC 189	208	75.4	SS MH 108	214	08.2	SS MH 107
193	11.2	SHC 183	199	05.7	SHC 182	208	10.3	SHC 208	214	14.0	SHC 214
193	09.0	WHC 187	199	05.9	SHC 182	208	93.1	SS MH 108	214	14.0	WHC 214
193	11.2	WHC 193	199	8.9	WHC 190	208	10.3	WHC 208	214	54.5	SS MH 107
194	01.0	SHC 187	200	03.7	SHC 181	209	30.0	SS MH 107	215	8.9	WHC 214
194	01.0	SHC 187	200	7.9	SHC 199	209	7.9	SHC 209	215	75.8	SS MH 107
194	01.3	WHC 181	200	02.0	WHC 181	209	7.9	WHC 209	215	18.0	WHC 215
194	01.3	WHC 194	200	5.9	WHC 200	209	23.4	SS MH 107	215	92.3	SS MH 107
195	00.4	SHC 180	201	01.0	WHC 202	210	45.1	SS MH 107	216	10.2	SHC 210
195	05.0	SHC 201	201	03.9	SHC 180	210	10.4	WHC 209	216	7.3	WHC 217
195	59.0	SHC 201	201	05.0	WHC 180	210		COULD NOT LOCATE	216	10.2	WHC 210
195	4.1	WHC 195	201	01.9	SHC 180	210		COULD NOT LOCATE	216	23.4	WHC 217

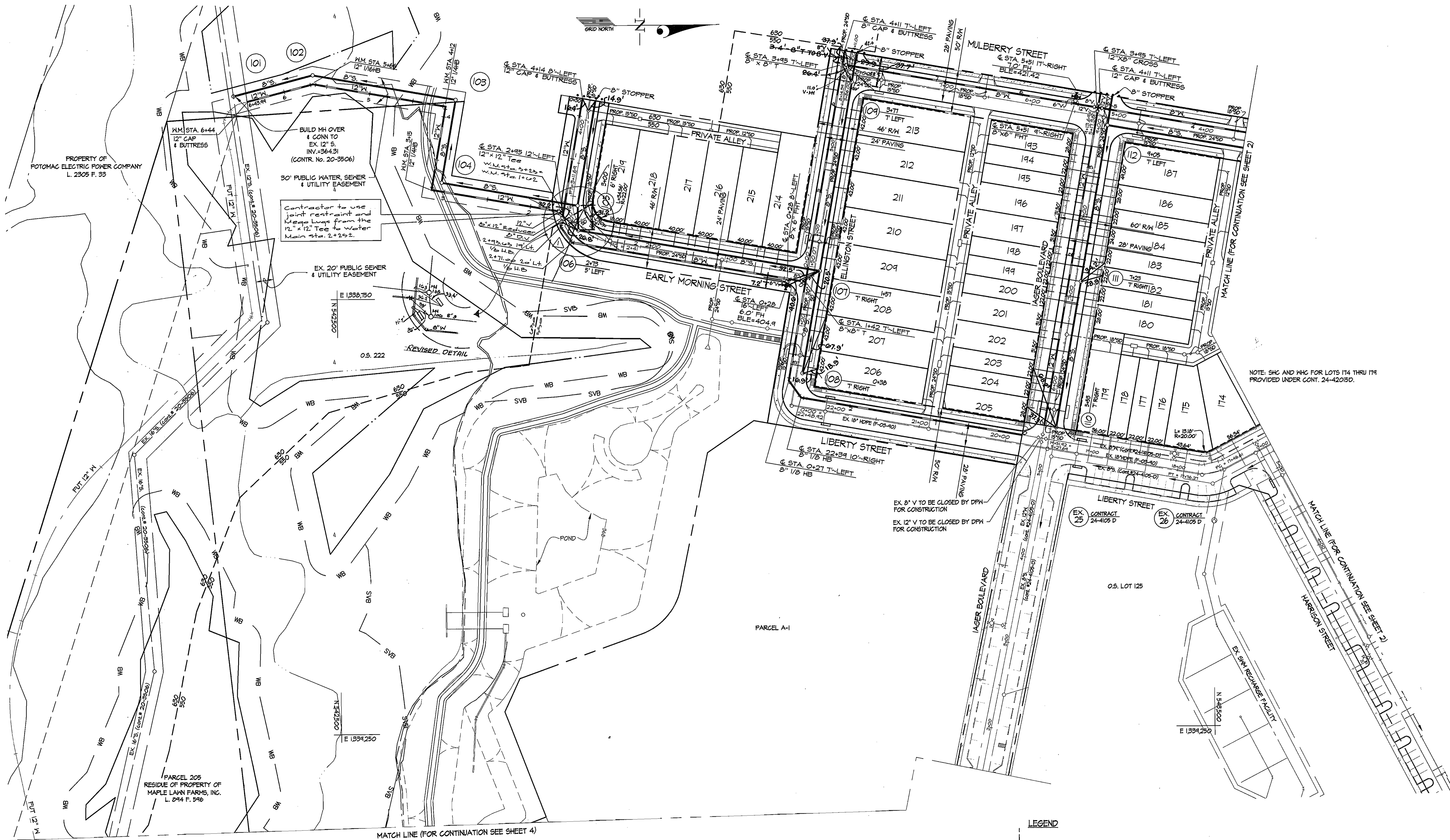


**AS BUILT**  
DATE: SEPT. 13, 2004

L:\CADD\DRAWINGS\02001\PHASE 3 (03001)\WS\03001\ws1.dwg 03/23/2004 03:42:44 PM EST

DEPARTMENT OF PUBLIC WORKS HOWARD COUNTY, MARYLAND 	DEPARTMENT OF PLANNING AND ZONING HOWARD COUNTY, MARYLAND 	<b>GLWGUTSCHICK LITTLE &amp; WEBER, P.A.</b> CIVIL ENGINEERS, LAND SURVEYORS, LAND PLANNERS, LANDSCAPE ARCHITECTS 3909 NATIONAL DRIVE - SUITE 250 - BURTNSVILLE OFFICE PARK BURTNSVILLE, MARYLAND 20886 TEL: 301-421-4024 FAX: 410-880-1820 DC/VAC 301-889-2524 FAX: 301-421-4186	DES: _____ DRN: _____ CHK: _____ DATE: 3/04 BY: NO _____ REVISION _____ DATE _____
<b>WATER and SEWER EXTENSION PLAN</b> 600' SCALE MAP NO. 46 BLOCK NO. 4			<b>MAPLE LAWN FARMS</b> MIDTOWN DISTRICT - AREA 2 LOTS 133 THRU 219, OPEN SPACE LOTS 220-225 COMMON OPEN SPACE LOTS 226-229 PARCELS 'A' THRU 'A3' AND NON-BUILDABLE PARCELS 'D' & 'E' HOWARD COUNTY, MARYLAND ELECTION DISTRICT No. 5 CONTRACT No. 24-4173-D

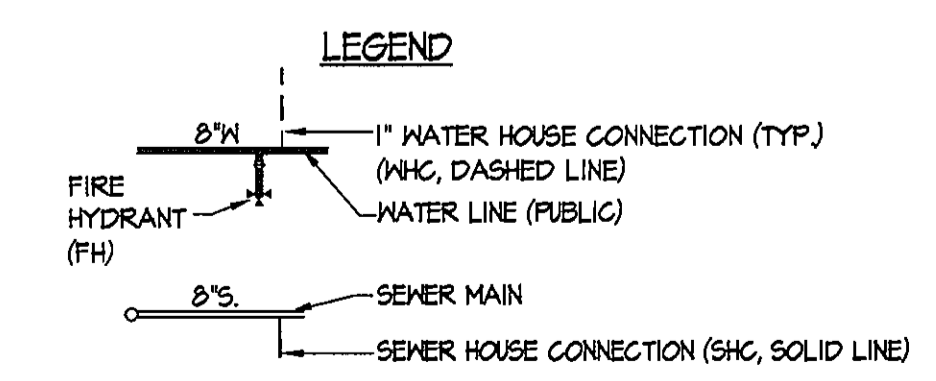
L:\CADD\DRAWINGS\02001\PHASE 3 (03001)\WS\03001.ws1.dwg 03/24/2004 10:15:36 AM EST



NOTE: SHG AND WHG FOR LOTS 174 THRU 179 PROVIDED UNDER CONT. 24-42015D.

EX. 8" V TO BE CLOSED BY DFW FOR CONSTRUCTION  
EX. 12" V TO BE CLOSED BY DFW FOR CONSTRUCTION

NOTE: ALL ROADS COUNTY OWNED UNLESS OTHERWISE NOTED.  
ALL ROADS P-3 PAVING UNLESS OTHERWISE NOTED.



**AS BUILT**  
DATE: SEPT. 13, 2004

GLW FILE #03001 WS1.dwg

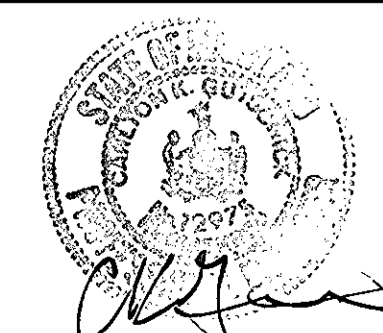
DEPARTMENT OF PUBLIC WORKS  
HOWARD COUNTY, MARYLAND

*Robert Berman* 3-30-04  
CHIEF, BUREAU OF UTILITIES DATE

DEPARTMENT OF PLANNING AND ZONING  
HOWARD COUNTY, MARYLAND

*Michael Cummings* 4/6/04  
CHIEF, DEVELOPMENT ENGINEERING DIVISION DATE

**GLW GUTSCHICK LITTLE & WEBER, P.A.**  
CIVIL ENGINEERS, LAND SURVEYORS, LAND PLANNERS, LANDSCAPE ARCHITECTS  
3909 NATIONAL DRIVE - SUITE 250 - BURNINGTREE OFFICE PARK  
BURTONSVILLE, MARYLAND 20866  
TEL: 301-421-4024 BAL: 410-880-1820 DC/VA: 301-989-2524 FAX: 301-421-4186



DES:	d.v.	Revise water in Early Morning st.	10/14/04
DRN:			
CHK:			
DATE:	3/04	AS-BUILT UP. DATE	9/26/07
BY:	NO	REVISION	DATE

**WATER and SEWER EXTENSION PLAN**

600' SCALE MAP NO. 46 BLOCK NO. 4

**MAPLE LAWN FARMS**  
MIDTOWN DISTRICT - AREA 2  
LOTS 133 THRU 219, OPEN SPACE LOTS 220-225  
COMMON OPEN SPACE LOTS 226-229  
PARCELS 'A1' THRU 'A3' AND NON-BUILDABLE PARCELS 'D' & 'E'  
HOWARD COUNTY, MARYLAND  
ELECTION DISTRICT No. 5  
CONTRACT No. 24-4173-D

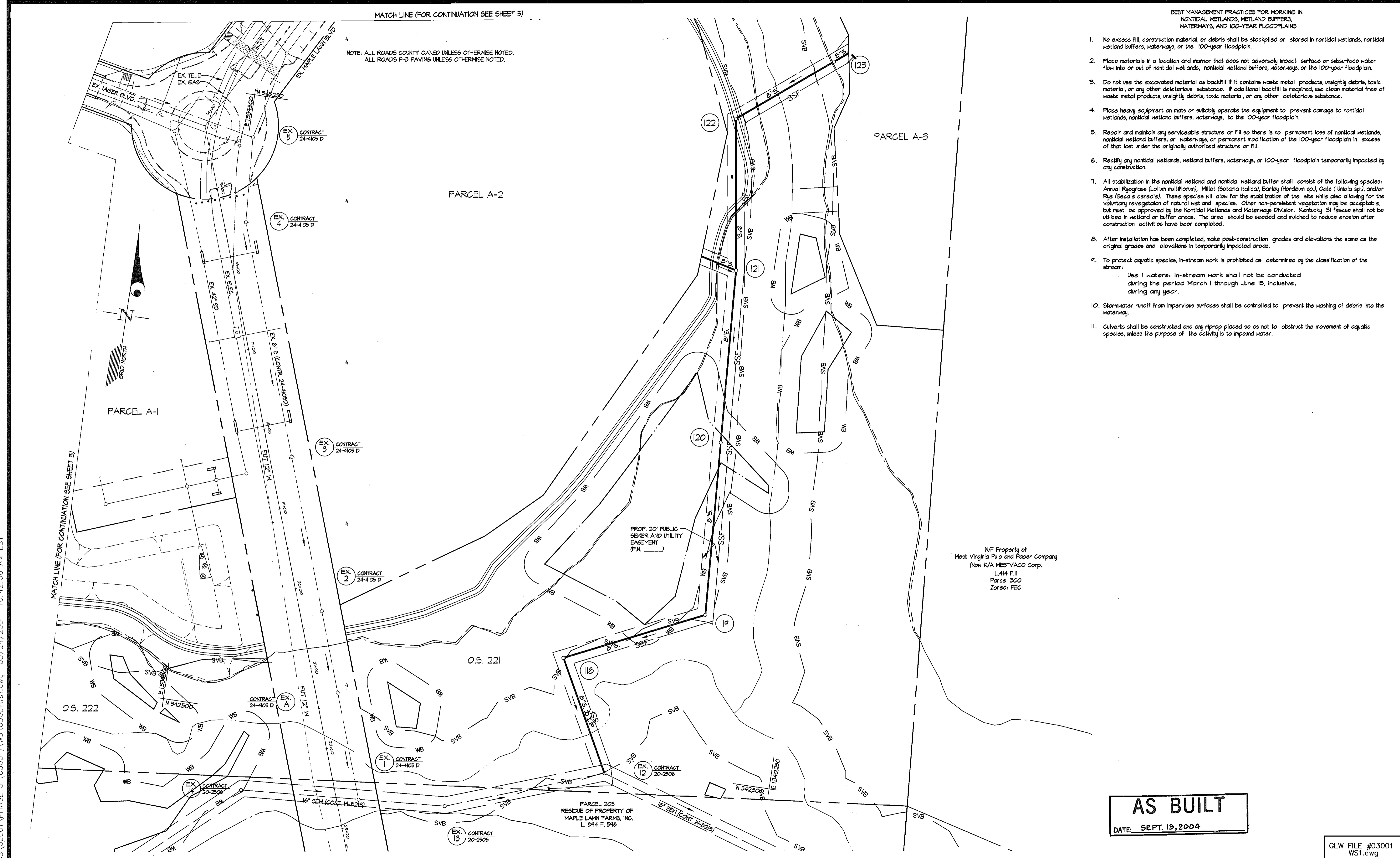
SCALE  
1"=50'  
SHEET  
3 OF 7

MATCH LINE (FOR CONTINUATION SEE SHEET 5)

NOTE: ALL ROADS COUNTY OWNED UNLESS OTHERWISE NOTED.  
ALL ROADS P-3 PAVING UNLESS OTHERWISE NOTED.

BEST MANAGEMENT PRACTICES FOR WORKING IN  
NONTIDAL WETLANDS, WETLAND BUFFERS,  
WATERWAYS, AND 100-YEAR FLOODPLAINS

- No excess fill, construction material, or debris shall be stockpiled or stored in nontidal wetlands, nontidal wetland buffers, waterways, or the 100-year floodplain.
- Place materials in a location and manner that does not adversely impact surface or subsurface water flow into or out of nontidal wetlands, nontidal wetland buffers, waterways, or the 100-year floodplain.
- Do not use the excavated material as backfill if it contains waste metal products, slightly debris, toxic material, or any other deleterious substance. If additional backfill is required, use clean material free of waste metal products, slightly debris, toxic material, or any other deleterious substance.
- Place heavy equipment on mats or suitably operate the equipment to prevent damage to nontidal wetlands, nontidal wetland buffers, waterways, to the 100-year floodplain.
- Repair and maintain any serviceable structure or fill so there is no permanent loss of nontidal wetlands, nontidal wetland buffers, or waterways, or permanent modification of the 100-year floodplain in excess of that lost under the originally authorized structure or fill.
- Rectify any nontidal wetlands, wetland buffers, waterways, or 100-year floodplain temporarily impacted by any construction.
- All stabilization in the nontidal wetland and nontidal wetland buffer shall consist of the following species: Annual Ryegrass (*Lolium multiflorum*), Millet (*Setaria italica*), Barley (*Hordeum sp.*), Oats (*Uliola sp.*), and/or Rye (*Secale cereale*). These species will allow for the stabilization of the site while also allowing for the voluntary revegetation of natural wetland species. Other non-persistent vegetation may be acceptable, but must be approved by the Nontidal Wetlands and Waterways Division. Kentucky 31 Fescue shall not be utilized in wetland or buffer areas. The area should be seeded and mulched to reduce erosion after construction activities have been completed.
- After installation has been completed, make post-construction grades and elevations the same as the original grades and elevations in temporarily impacted areas.
- To protect aquatic species, in-stream work is prohibited as determined by the classification of the stream:  
Use 1 waters: In-stream work shall not be conducted during the period March 1 through June 15, inclusive, during any year.
- Stormwater runoff from impervious surfaces shall be controlled to prevent the washing of debris into the waterway.
- Culverts shall be constructed and any riprap placed so as not to obstruct the movement of aquatic species, unless the purpose of the activity is to impound water.



N/F Property of  
West Virginia Pulp and Paper Company  
Now K/A WESTVACO Corp.  
L.414 F.11  
Parcel 300  
Zoned: FEC

**AS BUILT**  
DATE: SEPT. 13, 2004

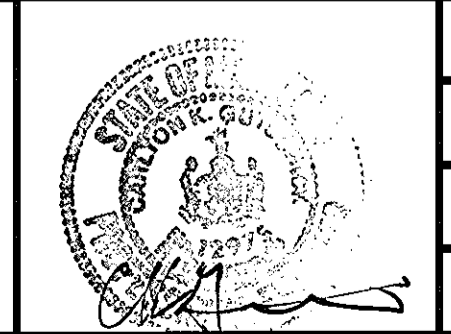
GLW FILE #03001  
WS1.dwg

L:\CADD\DRAWINGS\02001\PHASE 3 (03001)\WS\03001\ws1.dwg 03/24/2004 10:42:38 AM EST

DEPARTMENT OF  
PUBLIC WORKS  
HOWARD COUNTY, MARYLAND  
*Robert Berman* 3-30-04  
CHIEF, BUREAU OF UTILITIES DATE

DEPARTMENT OF  
PLANNING AND ZONING  
HOWARD COUNTY, MARYLAND  
*Michael A. Hildner* 4/10/04  
CHIEF, DEVELOPMENT ENGINEERING DIVISION DATE

**GLWGUTSCHICK LITTLE & WEBER, P.A.**  
CIVIL ENGINEERS, LAND SURVEYORS, LAND PLANNERS, LANDSCAPE ARCHITECTS  
3909 NATIONAL DRIVE - SUITE 250 - BURTONSVILLE OFFICE PARK  
BURTONSVILLE, MARYLAND 20866  
TEL: 301-421-4024 BAL: 410-880-1820 DC/VA: 301-989-2524 FAX: 301-421-4186



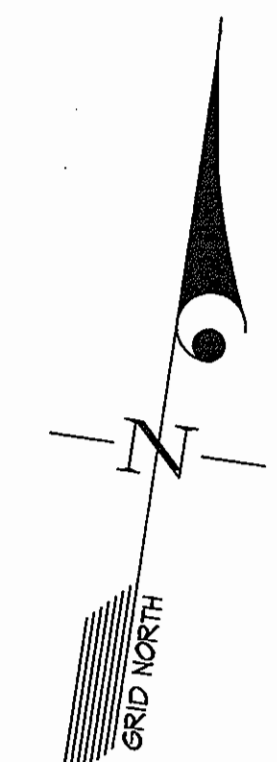
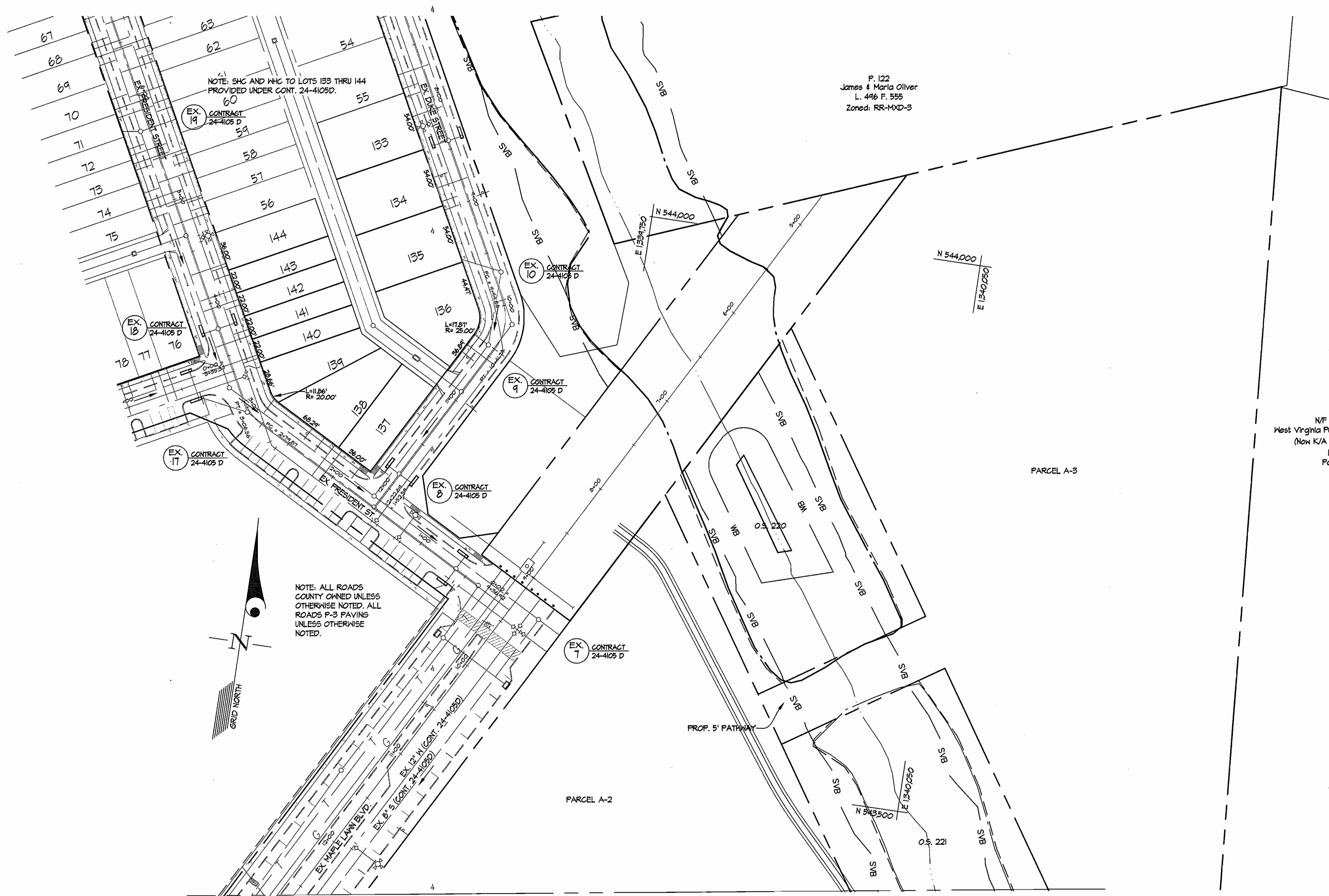
DES:	
DRN:	
CHK:	
DATE: 3/04	
BY NO	
REVISION	
DATE	

WATER and SEWER EXTENSION  
PLAN  
600' SCALE MAP NO. 46 BLOCK NO. 4

**MAPLE LAWN FARMS**  
MIDTOWN DISTRICT - AREA 2  
LOTS 133 THRU 219, OPEN SPACE LOTS 220-225  
COMMON OPEN SPACE LOTS 226-229  
PARCELS 'A1' THRU 'A3' AND NON-BUILDABLE PARCELS 'D' & 'E'  
HOWARD COUNTY, MARYLAND  
ELECTION DISTRICT No. 5  
CONTRACT No. 24-4173-D

SCALE  
1"=50'  
SHEET  
4 OF 7

L:\CADD\DRAWINGS\02001\PHASE 3 (03001)\WS\03001.wsf.dwg 03/24/2004 10:43:18 AM EST



NOTE: ALL ROADS COUNTY OWNED UNLESS OTHERWISE NOTED. ALL ROADS P-3 PAVING UNLESS OTHERWISE NOTED.

P. 122  
James & Maria Oliver  
L. 416 F. 555  
Zoned: RR-MXD-3

N/F Property of  
West Virginia Pulp and Paper Company  
(Now K/A WESTVACO Corp.)  
L.414 F.11  
Parcel 300

MATCH LINE (FOR CONTINUATION SEE SHEET 4)

**AS BUILT**  
DATE: SEPT. 13, 2004

GLW FILE #03001  
WS1.dwg

DEPARTMENT OF  
PUBLIC WORKS  
HOWARD COUNTY, MARYLAND  
*R. Dennis* 3-30-04  
CHIEF, BUREAU OF UTILITIES DATE

DEPARTMENT OF  
PLANNING AND ZONING  
HOWARD COUNTY, MARYLAND  
*M. Dennis* 4/6/04  
CHIEF, DEVELOPMENT ENGINEERING DIVISION DATE

**GLWGUTSCHICK LITTLE & WEBER, P.A.**  
CIVIL ENGINEERS, LAND SURVEYORS, LAND PLANNERS, LANDSCAPE ARCHITECTS  
3909 NATIONAL DRIVE - SUITE 250 - BURTONSVILLE OFFICE PARK  
BURTONSVILLE, MARYLAND 20866  
TEL: 301-421-4024 BAL: 410-880-1820 DC/VA: 301-989-2524 FAX: 301-421-4186



DES:					
DRN:					
CHK:					
DATE: 3/04	BY	NO	REVISION	DATE	

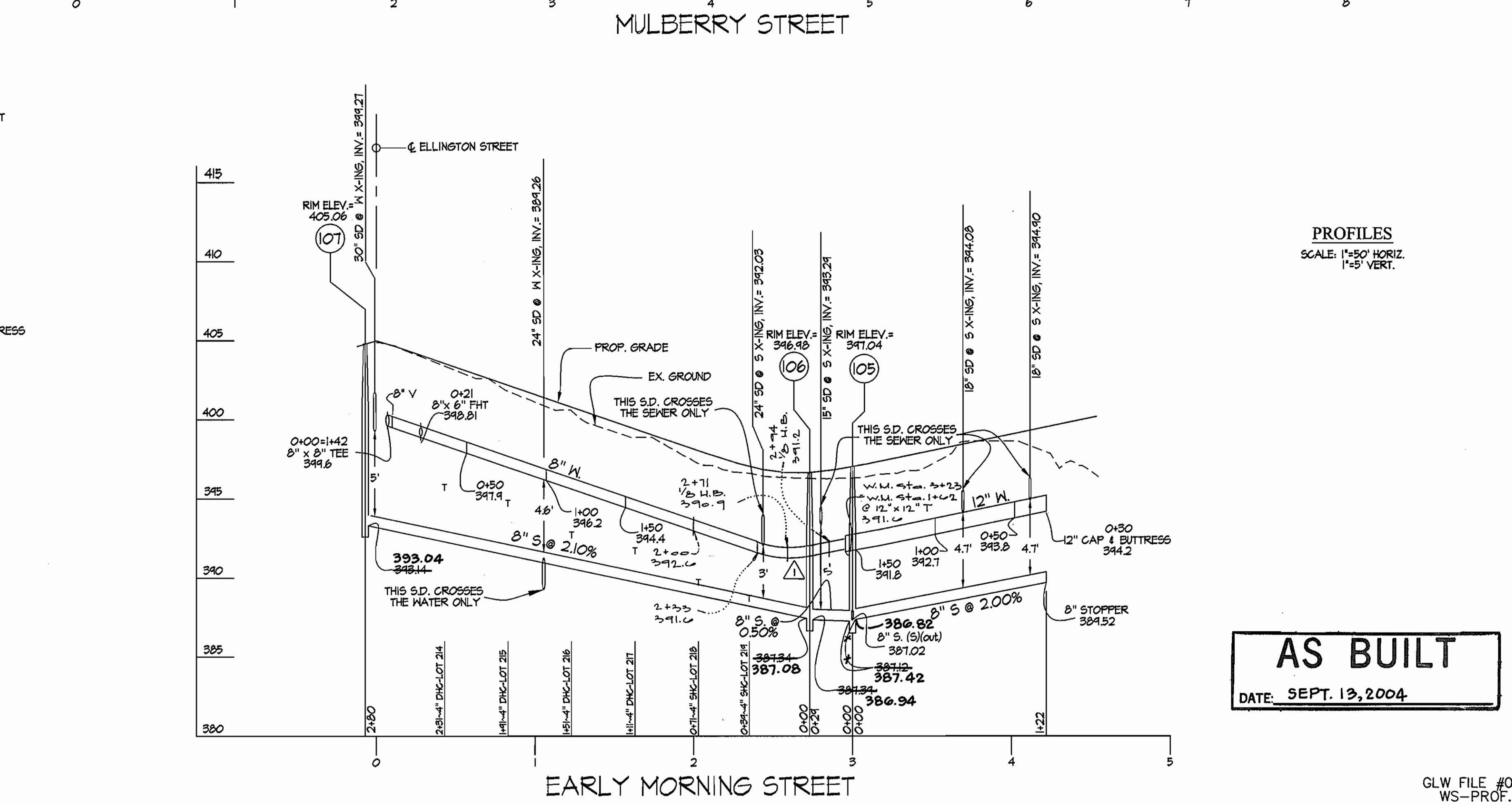
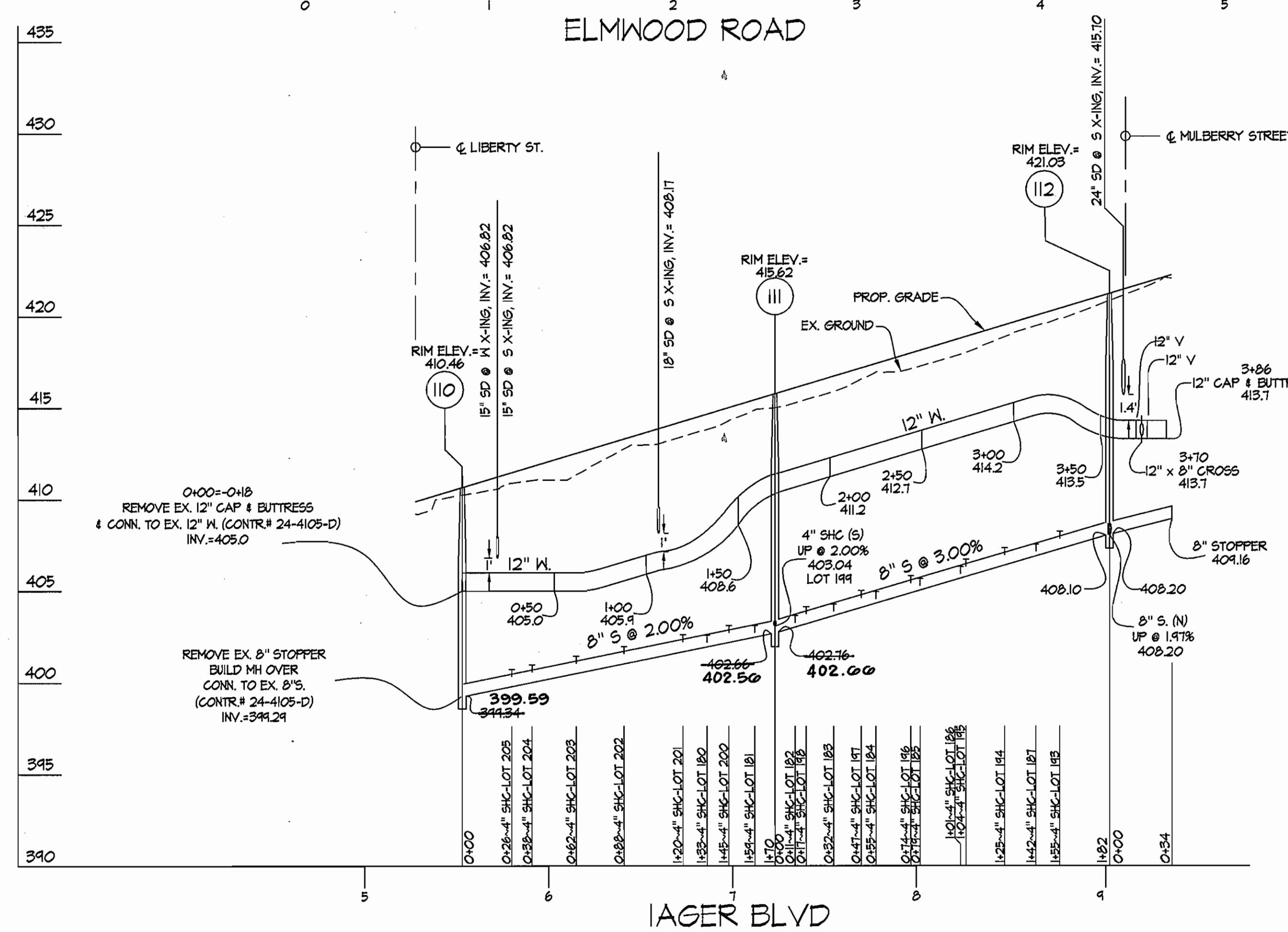
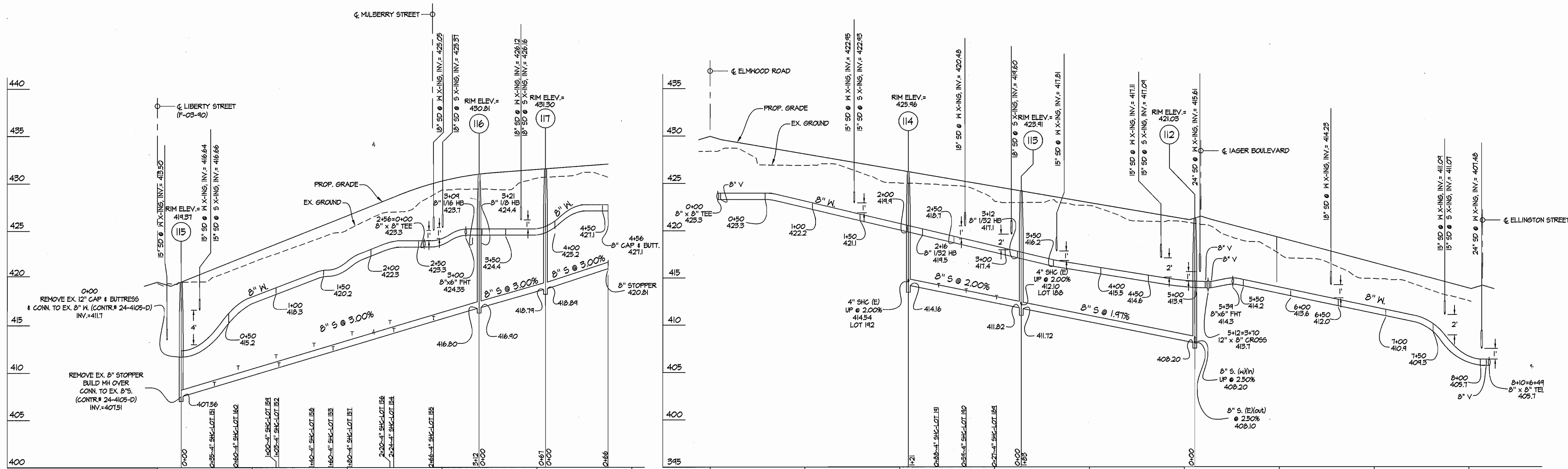
WATER and SEWER EXTENSION  
PLAN

600' SCALE MAP NO. 46 BLOCK NO. 4

**MAPLE LAWN FARMS**  
MIDTOWN DISTRICT - AREA 2  
LOTS 133 THRU 219, OPEN SPACE LOTS 220-225  
COMMON OPEN SPACE LOTS 226-229  
PARCELS 'A1' THRU 'A3' AND NON-BUILDABLE PARCELS 'D' & 'E'  
HOWARD COUNTY, MARYLAND  
ELECTION DISTRICT No. 5  
CONTRACT No. 24-4173-D

SCALE  
1"=50'  
SHEET  
5 OF 7

L:\CADD\DRAWINGS\02001\PHASE 3 (03001)\WS\03001ws-prof.dwg 03/23/2004 05:24:51 PM EST



PROFILES  
SCALE: 1"=50' HORIZ.  
1"=5' VERT.

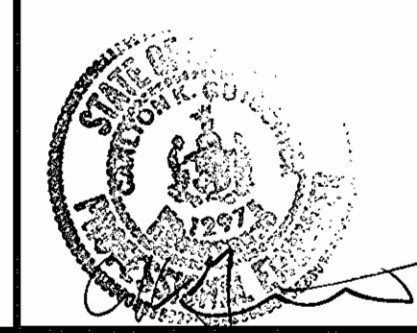
**AS BUILT**  
DATE: SEPT. 13, 2004

GLW FILE #03001  
WS-PROF.dwg

DEPARTMENT OF  
PUBLIC WORKS  
HOWARD COUNTY, MARYLAND  
*Robert R. ...* 3-30-04  
CHIEF, BUREAU OF UTILITIES DATE

DEPARTMENT OF  
PLANNING AND ZONING  
HOWARD COUNTY, MARYLAND  
*...* 4/6/04  
CHIEF, DEVELOPMENT ENGINEERING DIVISION DATE

**GLW** GUTSCHICK LITTLE & WEBER, P.A.  
CIVIL ENGINEERS, LAND SURVEYORS, LAND PLANNERS, LANDSCAPE ARCHITECTS  
3909 NATIONAL DRIVE - SUITE 250 - BURTNSVILLE OFFICE PARK  
BURTNSVILLE, MARYLAND 20866  
TEL: 301-421-4024 FAX: 301-421-4186



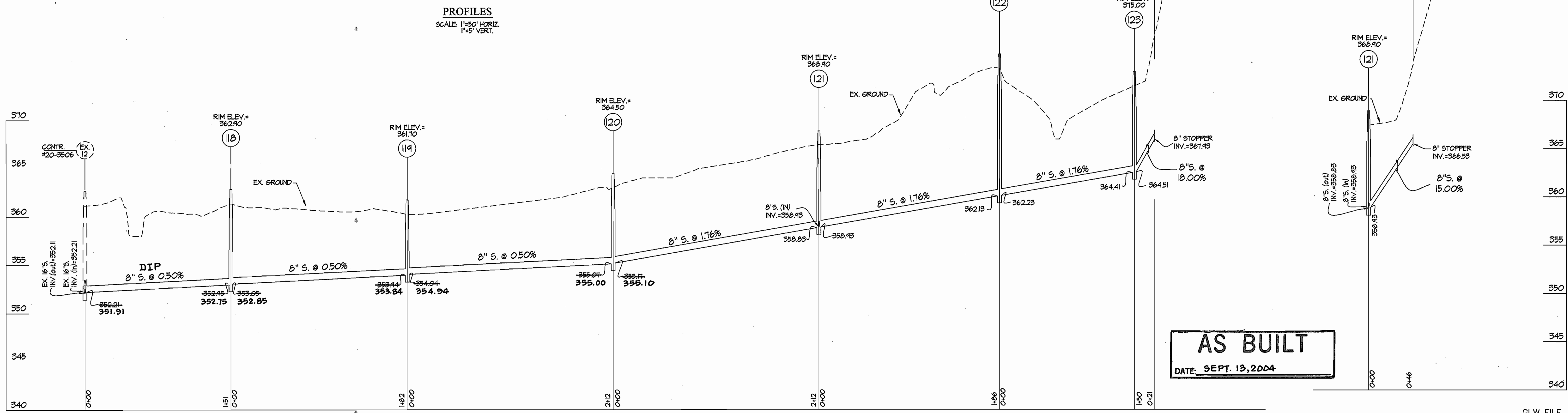
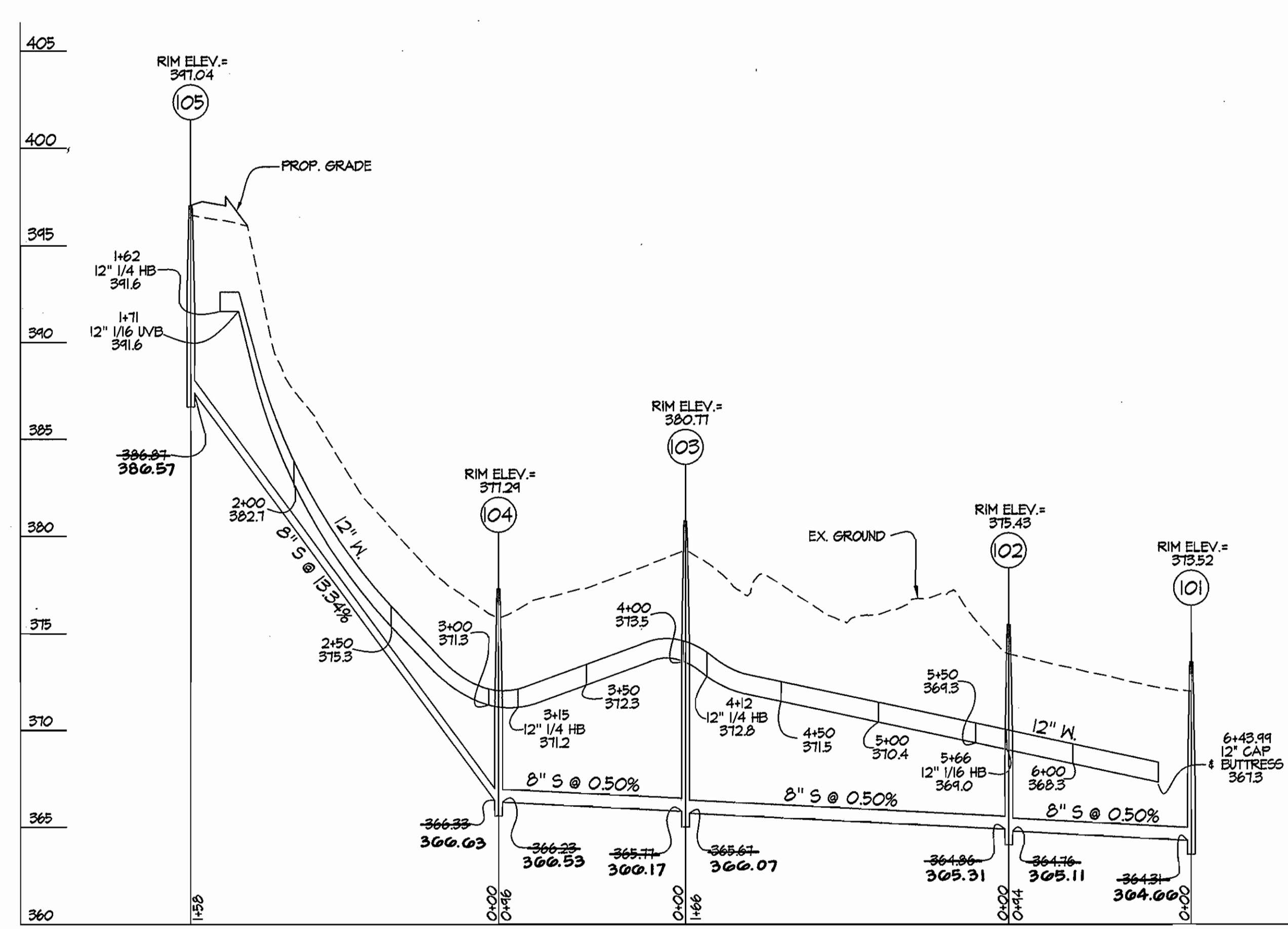
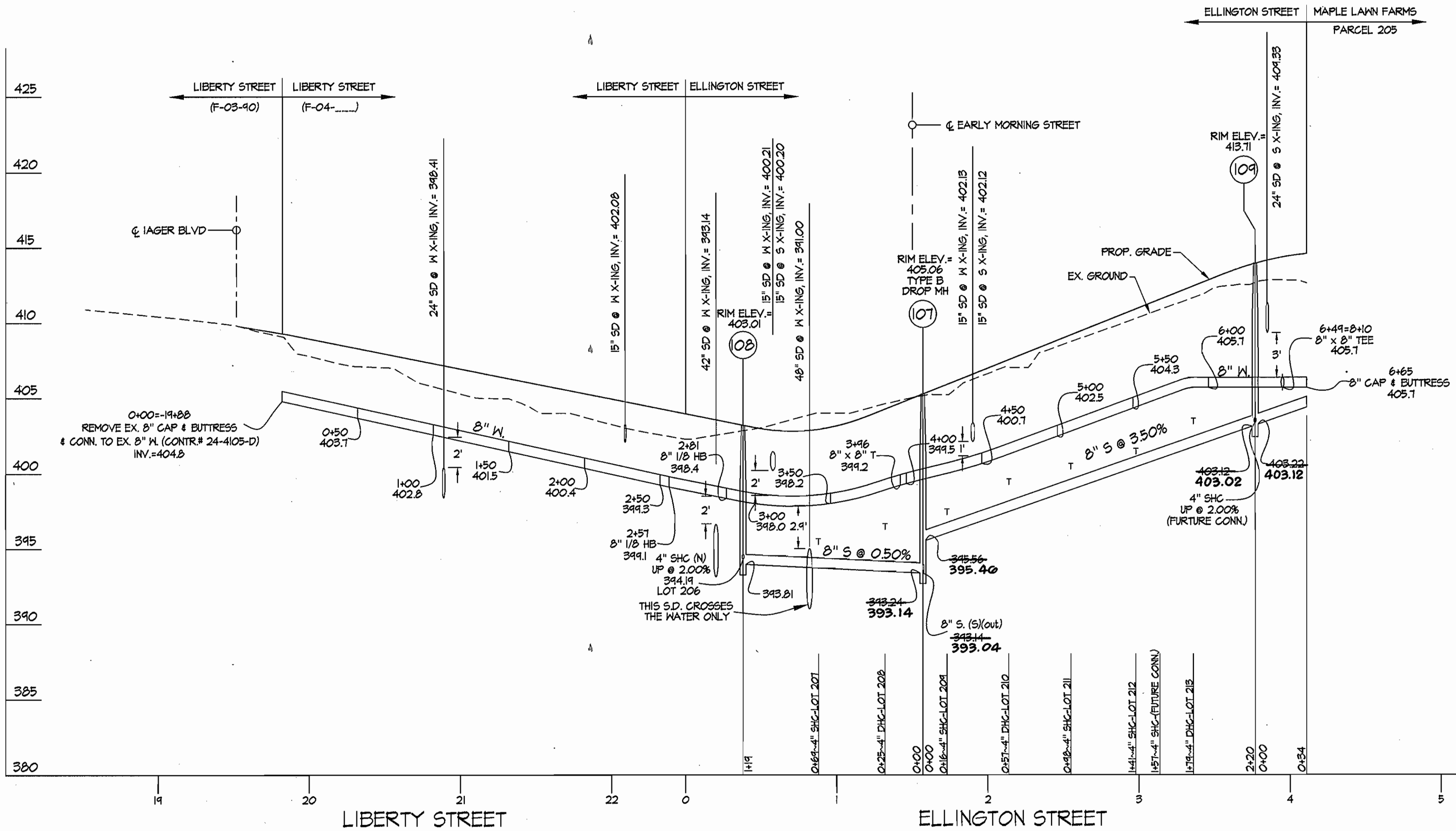
DES:	d.w.	Revise b/w profile in Early Morning Street	10/14/04
DRN:			
CHK:			
DATE:	3/04		

WATER and SEWER EXTENSION  
PLAN  
600' SCALE MAP NO. \_\_\_\_\_ BLOCK NO. \_\_\_\_\_

**MAPLE LAWN FARMS**  
MIDTOWN DISTRICT - AREA 2  
LOTS 133 THRU 219, OPEN SPACE LOTS 220-225  
COMMON OPEN SPACE LOTS 226-229  
PARCELS 'A1' THRU 'A3' AND NON-BUILDABLE PARCELS 'D' & 'E'  
HOWARD COUNTY, MARYLAND  
ELECTION DISTRICT No. 5  
CONTRACT No. 24-4173-D

SCALE  
AS  
SHOWN  
SHEET  
6 OF 7

L:\CADD\DRAWINGS\02001\PHASE 3 (03001)\WS\03001\ws-prof.dwg 03/23/2004 05:24:51 PM EST



**AS BUILT**  
DATE: SEPT. 13, 2004

GLW FILE #03001  
WS-PROF.dwg

DEPARTMENT OF PUBLIC WORKS  
HOWARD COUNTY, MARYLAND  
*R. A. Benjamin* 3-30-04  
CHIEF, BUREAU OF UTILITIES DATE

DEPARTMENT OF PLANNING AND ZONING  
HOWARD COUNTY, MARYLAND  
*William* 2/16/04  
CHIEF, DEVELOPMENT ENGINEERING DIVISION DATE

**GLW GUTSCHICK LITTLE & WEBER, P.A.**  
CIVIL ENGINEERS, LAND SURVEYORS, LAND PLANNERS, LANDSCAPE ARCHITECTS  
3609 NATIONAL DRIVE - SUITE 250 - BURTONSVILLE OFFICE PARK  
BURTONSVILLE, MARYLAND 20866  
TEL: 301-421-4024 FAX: 301-421-4188



DES:	
DRN:	
CHK:	
DATE: 3/04	
BY NO	REVISION
	DATE

WATER and SEWER EXTENSION PLAN  
600' SCALE MAP NO. \_\_\_\_\_ BLOCK NO. \_\_\_\_\_

**MAPLE LAWN FARMS**  
MIDTOWN DISTRICT - AREA 2  
LOTS 133 THRU 219, OPEN SPACE LOTS 220-225  
COMMON OPEN SPACE LOTS 226-229  
PARCELS 'A' THRU 'A3' AND NON-BUILDABLE PARCELS 'D' & 'E'  
HOWARD COUNTY, MARYLAND  
ELECTION DISTRICT No. 5  
CONTRACT No. 24-4173-D

SCALE AS SHOWN  
SHEET 7 OF 7