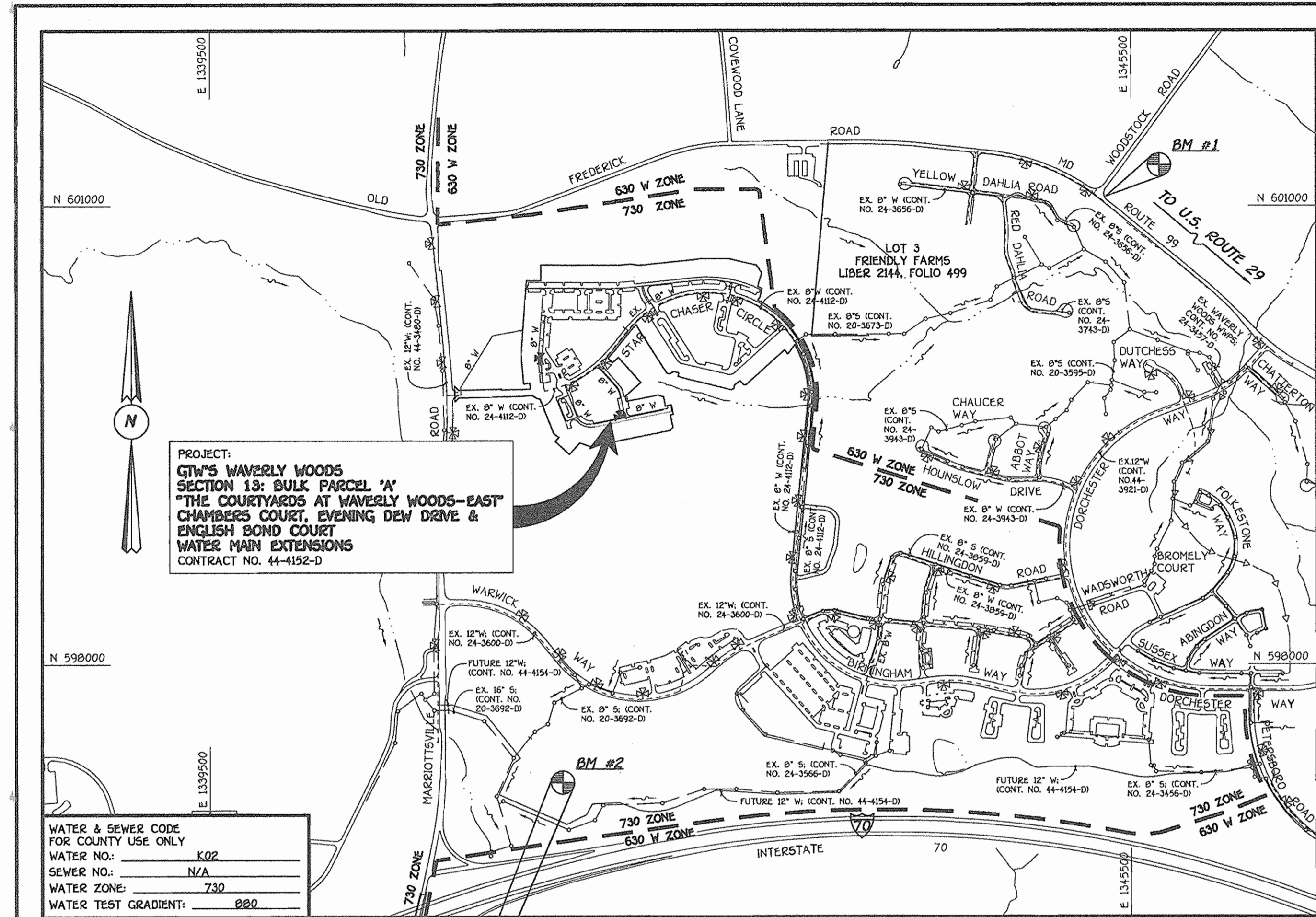


QUANTITIES				
ITEM	ESTIMATED	QUANTITIES	AS-BUILT	SUPPLIER
8" WATER	1,076 L.F.	1,075	DIP	GRIFIN PIPE / BRS
6" WATER	64 L.F.	61	"	"
1" WATER	1,061 L.F.	1,023	COPPER TUBE	BRS / READING
FIRE HYDRANTS	2 EACH	2	"	BRS / MUELLER
8" X 8" TEE	3 EACH	3	DIP	BRS / STAR PIPE
8" X 6" TEE	6 EACH	6	"	"
8" VALVE	5 EACH	5	ROCKWELL VALVE	BRS / MUELLER
6" VALVE	6 EACH	6	"	"
1/8" H.B.	4 EACH	4	DIP	BRS / STAR PIPE
8" 1/16" H.B.	3 EACH	3	"	"
8" 1/32" H.B.	2 EACH	2	"	"
8" PLUG & BUTTRESS	1 EACH	1	"	"
6" PLUG & BUTTRESS	4 EACH	4	"	"

NAME OF UTILITY CONTRACTOR: CONSOLIDATED CONSTRUCTION SERVICE  
SURVEY & DRAFTING DIVISION AS-BUILT DATE:



TYPE OF BUILDING: RESIDENTIAL (TOWNHOUSES & CONDOMINIUMS)	PLAN REFERENCE NUMBERS: 503-06, F04-50, 50P04-00
NUMBER OF LOTS & PARCELS: 1 BULK PARCEL	
NO. OF WATER HOUSE CONNECTIONS: 52	
NO. OF SEWER HOUSE CONNECTIONS: 0	
DRAINAGE AREA: LITTLE PATUXENT	
TREATMENT PLANT: LITTLE PATUXENT WATER RECLAMATION PLANT	

VICINITY MAP  
SCALE: 1"=600'

### GENERAL NOTES

- PART I
- APPROXIMATE LOCATIONS OF EXISTING MAINS ARE SHOWN. THE CONTRACTOR SHALL TAKE ALL NECESSARY PRECAUTIONS TO PROTECT EXISTING MAINS AND SERVICES AND MAINTAIN UNINTERRUPTED SERVICE. ANY DAMAGE INCURRED SHALL BE REPAIRED IMMEDIATELY TO THE SATISFACTION OF THE ENGINEER AT THE CONTRACTOR'S EXPENSE.
  - ALL HORIZONTAL CONTROLS ARE BASED ON MARYLAND STATE COORDINATES, NAD 83/91.
  - ALL VERTICAL CONTROLS ARE BASED ON NAVD 80.
  - ALL PIPE ELEVATIONS SHOWN ARE INVERT ELEVATIONS UNLESS OTHERWISE NOTED ON THE PLANS.
  - CLEAR ALL UTILITIES BY A MINIMUM OF 12 INCHES. CLEAR ALL POLES BY 5'-0" MINIMUM OR TUNNEL AS REQUIRED UNLESS OTHERWISE NOTED. THE OWNER HAS CONTACTED THE UTILITY COMPANIES AND HAS MADE ARRANGEMENTS FOR BRACING OF POLES AS SHOWN ON THE DRAWINGS. IN THE EVENT THE CONTRACTOR'S WORK REQUIRES BRACING OF ADDITIONAL POLES, ANY COST INCURRED BY THE OWNER FOR THE BRACING OF THE ADDITIONAL POLES OR DAMAGES SHALL BE DEDUCTED FROM MONIES OWED THE CONTRACTOR. THE CONTRACTOR SHALL COORDINATE WITH THE UTILITY COMPANIES TO SCHEDULE THE BRACING OF THE POLES.
  - FOR DETAILS NOT SHOWN ON THE DRAWINGS, AND FOR MATERIALS AND CONSTRUCTION METHODS, USE HOWARD COUNTY DESIGN MANUAL, VOLUME IV, STANDARD SPECIFICATIONS AND DETAILS FOR CONSTRUCTION (LATEST EDITION). THE CONTRACTOR SHALL HAVE A COPY OF VOLUME IV ON THE JOB SITE.
  - WHERE TEST PITS HAVE BEEN MADE ON EXISTING UTILITIES, THEY ARE NOTED BY THE SYMBOL  $\odot$  AT THE LOCATIONS OF THE TEST PITS. A NOTE OR NOTES CONTAINING THE RESULTS OF THE TEST PIT OR PITS IS INCLUDED ON THE DRAWINGS. EXISTING UTILITIES IN THE VICINITY OF THE PROPOSED WORK FOR WHICH TEST PITS HAVE NOT BEEN DUG SHALL BE LOCATED BY THE CONTRACTOR TWO WEEKS IN ADVANCE OF CONSTRUCTION OPERATIONS AT HIS OWN EXPENSE.
  - THE CONTRACTOR SHALL NOTIFY THE FOLLOWING UTILITY COMPANIES OR AGENCIES AT LEAST FIVE WORKING DAYS BEFORE STARTING WORK SHOWN ON THESE PLANS:  
AT&T . . . . . 1-800-252-1133  
BGE (CONTRACTOR SERVICES) . . . . . 410-850-4620  
BGE (UNDERGROUND DAMAGE CONTROL) . . . . . 410-787-9068  
BUREAU OF UTILITIES . . . . . 410-313-4900  
COLONIAL PIPELINE CO . . . . . 410-795-1390  
MISS UTILITY . . . . . 1-800-297-7777  
STATE HIGHWAY ADMINISTRATION . . . . . 410-531-5533  
VERIZON . . . . . 1-800-743-0033/410-224-9210
  - TREES AND SHRUBS ARE TO BE PROTECTED FROM DAMAGE TO THE MAXIMUM EXTENT. TREES AND SHRUBS LOCATED WITHIN THE CONSTRUCTION STRIP ARE NOT TO BE REMOVED OR DAMAGED BY THE CONTRACTOR.
  - CONTRACTOR SHALL REMOVE TREES, STUMPS AND ROOTS ALONG THE LINE OF EXCAVATION. PAYMENT FOR SUCH REMOVAL SHALL BE INCLUDED IN THE UNIT PRICE BID FOR THE CONSTRUCTION OF THE MAIN.
  - THE CONTRACTOR SHALL NOTIFY THE BUREAU OF HIGHWAYS, HOWARD COUNTY, AT (410)-313-7450 AT LEAST FIVE WORKING DAYS BEFORE OPEN CUTTING OR BORING/JACKING OF ANY COUNTY ROAD FOR LAYING WATER/SEWER MAINS OR HOUSE CONNECTIONS. THE APPROVAL OF THESE DRAWINGS WILL CONSTITUTE COMPLIANCE WITH DPW REQUIREMENTS PER SECTION 10.114(d) OF THE HOWARD COUNTY CODE.
- PART II: WATER
- ALL WATER MAINS SHALL BE D.I.P. CLASS 52 UNLESS OTHERWISE NOTED.
  - TOPS OF ALL WATER MAINS SHALL HAVE A MINIMUM OF 3'-6" OF COVER UNLESS OTHERWISE NOTED.
  - VALVES ADJACENT TO TEES SHALL BE STRAPPED TO TEES.
  - ALL FITTINGS SHALL BE BUTTRESSED OR ANCHORED WITH CONCRETE IN ACCORDANCE WITH STANDARD DETAILS UNLESS OTHERWISE PROVIDED FOR ON THE DRAWINGS.
  - FIRE HYDRANTS SHALL BE SET TO THE BURY LINE ELEVATIONS SHOWN ON THE DRAWINGS. ALL FIRE HYDRANTS SHALL BE INSTALLED IN ACCORDANCE WITH STANDARD DETAILS. THE SOIL AROUND THE FIRE HYDRANT SHALL BE COMPACTED IN ACCORDANCE WITH SECTION 1000 AND SECTION 1005 OF THE STANDARD SPECIFICATIONS.
  - THE CONTRACTOR SHALL NOT OPERATE ANY WATER MAIN VALVES ON THE EXISTING WATER SYSTEM.
- PART III: SEWER
- ALL SEWER MAINS SHALL BE D.I.P. OR P.V.C. UNLESS OTHERWISE NOTED.
  - ALL MANHOLES SHALL BE 4'-0" INSIDE DIAMETER UNLESS OTHERWISE NOTED.
  - FORCE MAINS SHALL BE D.I.P. ONLY.
  - MANHOLES SHOWN WITH 12" AND 18" WALLS ARE FOR BRICK MANHOLES ONLY.
  - MANHOLES DESIGNATED W.T. IN PLAN AND PROFILE SHALL HAVE WATER-TIGHT FRAME AND COVER, STANDARD DETAIL G5.52. WHERE WATER-TIGHT MANHOLE FRAMES AND COVERS ARE USED, SET TOP OF FRAME 1'-6" ABOVE FINISHED GRADE UNLESS OTHERWISE NOTED ON THE DRAWINGS.
  - HOUSES WITH THE SYMBOL "C.N.S." INDICATES THAT THE CELLAR CANNOT BE SERVED.

BENCHMARK INFORMATION	
BM#1 - HOWARD COUNTY CONTROL STATION #1012 (NAD '83) (NEAR THE INTERSECTION OF MARYLAND ROUTE 99 & WOODSTOCK ROAD) N 601,060.177 E 1,345,336.759 ELEVATION = 445.577	
BM#2 - HOWARD COUNTY CONTROL STATION # 16E1 (NAD '83) (NEAR THE INTERSECTION OF U.S. ROUTE 40 & MARRIOTTVILLE ROAD) N 593,250.932 E 1,340,192.711 ELEVATION = 509.924	

**DEVELOPER'S CERTIFICATION**  
I/WE HEREBY CERTIFY THAT ALL DEVELOPMENT AND CONSTRUCTION WILL BE DONE ACCORDING TO THIS PLAN OF DEVELOPMENT AND PLAN FOR EROSION AND SEDIMENT CONTROL AND THAT ALL RESPONSIBLE PERSONNEL INVOLVED IN THE CONSTRUCTION PROJECT WILL HAVE A CERTIFICATE OF ATTENDANCE AT THE DEPARTMENT OF THE ENVIRONMENT APPROVED TRAINING PROGRAM FOR THE CONTROL OF SEDIMENT AND EROSION BEFORE BEGINNING THE PROJECT. I ALSO AUTHORIZE PERIODIC ON-SITE INSPECTION BY THE HOWARD SOIL CONSERVATION DISTRICT OR THEIR AUTHORIZED AGENTS, AS ARE DEEMED NECESSARY.

Paul W. Reichel FOR:  
WAVERLY WOODS DEVELOPMENT CORP. 07-14-04  
SIGNATURE OF DEVELOPER DATE

**ENGINEER'S CERTIFICATION**  
I HEREBY CERTIFY THAT THIS PLAN FOR EROSION AND SEDIMENT CONTROL REPRESENTS A PRACTICAL AND WORKABLE PLAN BASED ON MY PERSONAL KNOWLEDGE OF THE SITE CONDITIONS AND THAT IT WAS PREPARED IN ACCORDANCE WITH THE REQUIREMENTS OF THE HOWARD SOIL CONSERVATION DISTRICT.

Paul W. Reichel  
SIGNATURE OF ENGINEER  
07/14/04  
DATE

GP-04-80

REVIEWED FOR HOWARD COUNTY SOIL CONSERVATION DISTRICT AND MEETS TECHNICAL REQUIREMENTS.

Jin Lynn Lee 7/27/04  
U.S.D.A. NATURAL RESOURCES CONSERVATION SERVICE DATE

THIS DEVELOPMENT IS APPROVED FOR EROSION AND SEDIMENT CONTROL BY HOWARD SOIL CONSERVATION DISTRICT.

APPROVED:  
J.R. Robertson/lee 7/27/04  
HOWARD SOIL CONSERVATION DISTRICT DATE

SEDIMENT CONTROL MEASURES FOR THIS CONTRACT WILL BE IMPLEMENTED IN ACCORDANCE WITH SECTION 219 OF THE HOWARD COUNTY DESIGN MANUAL & STANDARDS AND SPECIFICATIONS FOR SOIL EROSION AND SEDIMENT CONTROL IN DEVELOPING AREAS AND AS SHOWN ON 5DP04-00.

Paul W. Reichel FOR:  
WAVERLY WOODS DEVELOPMENT CORP. 07-14-04  
SIGNATURE OF DEVELOPER DATE

# CONTRACT No. 44-4152-D

## GTW'S WAVERLY WOODS

### SECTION 13: BULK PARCEL 'A'

#### "THE COURTYARDS @ WAVERLY WOODS-EAST"

#### CHAMBERS COURT, EVENING DEW DRIVE & ENGLISH BOND COURT

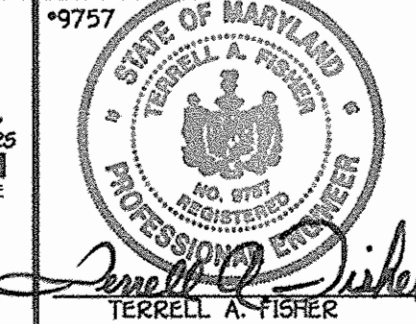
#### WATER MAIN EXTENSIONS

#### HOWARD COUNTY, MARYLAND

DEPARTMENT OF PUBLIC WORKS  
HOWARD COUNTY, MARYLAND  
R. J. ... 7-20-04  
CHIEF, BUREAU OF UTILITIES DATE

DEPARTMENT OF PLANNING AND ZONING  
HOWARD COUNTY, MARYLAND  
... 8/3/04  
CHIEF, DEVELOPMENT ENGINEERING DIVISION DATE

FISHER, COLLINS & CARTER, INC.  
CIVIL ENGINEERING CONSULTANTS & LAND SURVEYORS  
CENTENNIAL SQUARE OFFICE PARK - 10772 RAILROAD NATIONAL PIZ  
ELLICOTT CITY, MARYLAND 21042  
4101 461 - 2099



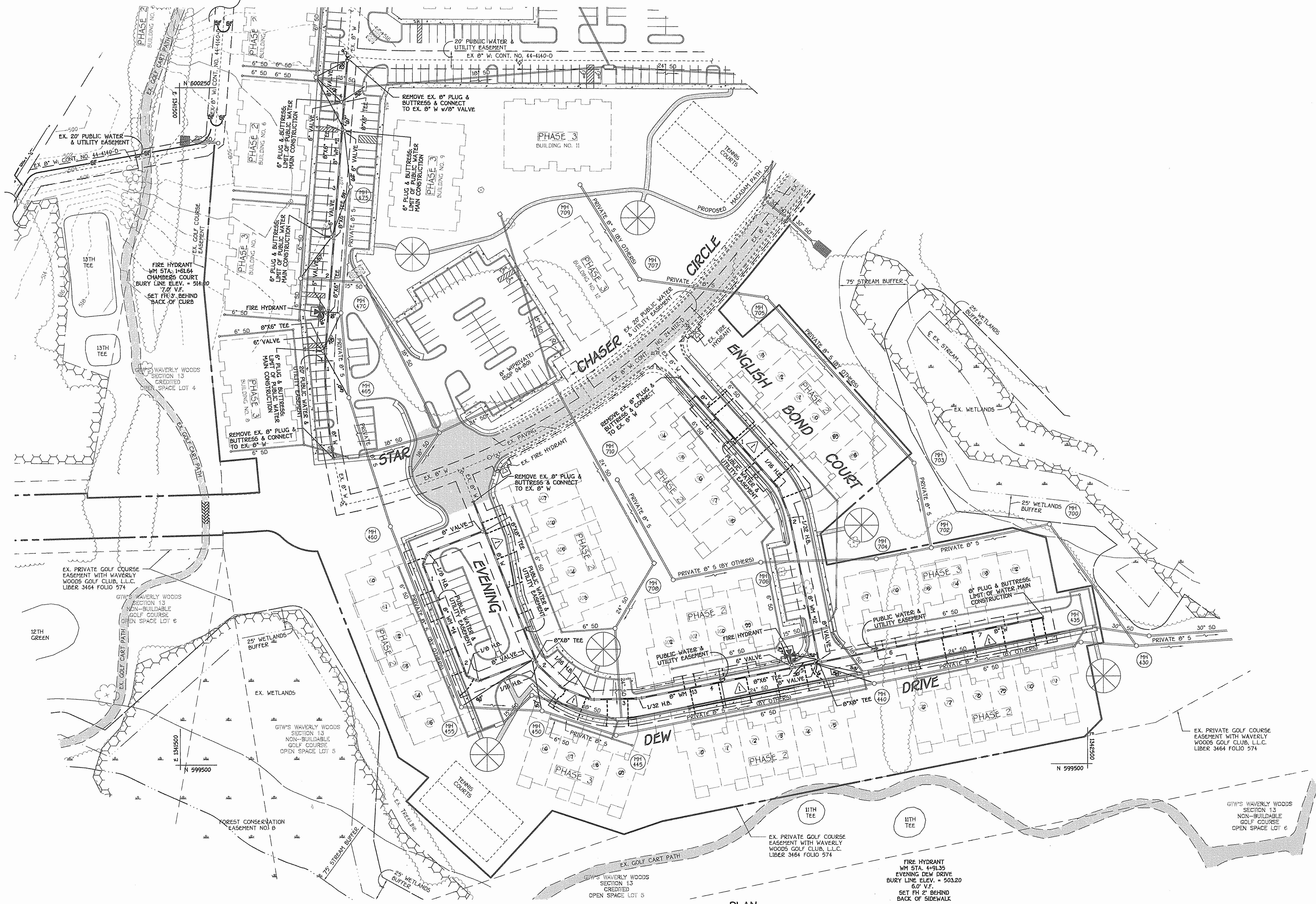
DESIGNED BY: H.D.T.	
DRAWN BY: H.D.T.	
CHECKED BY: P.W.K.	
DATE: JULY, 2004	
VCL BY NO.	
AS-BUILT DATA ADDED	1/8/04
REVISION	

WATER MAINS TITLE SHEET	
600' SCALE MAP NO. <u>16</u> BLOCK NO. <u>4 &amp; 5</u>	
F.C.C. WORK ORDER NO. <u>40393</u>	
FILE NAME: <u>FINAL WATER MAINS TITLE SH</u>	

**GTW'S WAVERLY WOODS**  
SECTION 13: BULK PARCEL 'A'  
"THE COURTYARDS @ WAVERLY WOODS-EAST"  
CHAMBERS COURT, EVENING DEW DRIVE & ENGLISH BOND COURT  
CONTRACT NO. 44-4152-D  
THIRD ELECTION DISTRICT  
HOWARD COUNTY, MARYLAND

SCALE AS SHOWN  
SHEET 1 of 4

CONTRACT NO. 44-4152-D  
GTW'S WAVERLY WOODS  
SECTION 13: BULK PARCEL 'A'  
"THE COURTYARDS @ WAVERLY WOODS-EAST"  
CHAMBERS COURT, EVENING DEW DRIVE &  
ENGLISH BOND COURT  
WATER MAIN EXTENSIONS  
HOWARD COUNTY, MARYLAND



PLAN  
SCALE: 1" = 50'

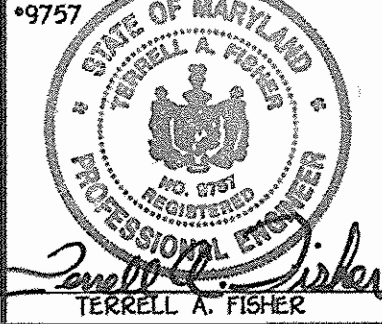
FIRE HYDRANT  
WM STA. 4+91.35  
EVENING DEW DRIVE  
BURY LINE ELEV. = 503.20  
6.0' V.F.  
SET FH 2' BEHIND  
BACK OF SIDEWALK

CONTRACT NO. 44-4152-D  
GTW'S WAVERLY WOODS  
SECTION 13: BULK PARCEL 'A'  
"THE COURTYARDS AT WAVERLY WOODS-EAST"  
CHAMBERS COURT, EVENING DEW DRIVE &  
ENGLISH BOND COURT  
WATER MAIN EXTENSIONS  
HOWARD COUNTY, MARYLAND

DEPARTMENT OF PUBLIC WORKS  
HOWARD COUNTY, MARYLAND

DEPARTMENT OF PLANNING AND ZONING  
HOWARD COUNTY, MARYLAND

FISHER, COLLINS & CARTER, INC.  
CIVIL ENGINEERING CONSULTANTS & LAND SURVEYORS  
CENTRAL SQUARE OFFICE PARK - 10272 BALTIMORE NATIONAL PIKE  
ELLSWORTH CITY, MARYLAND 21117  
4101-461-2295



DESIGNED BY:	M.D.T.
DRAWN BY:	M.D.T.
CHECKED BY:	P.W.K.
DATE:	JULY, 2004
BY:	NO.
REVISION:	

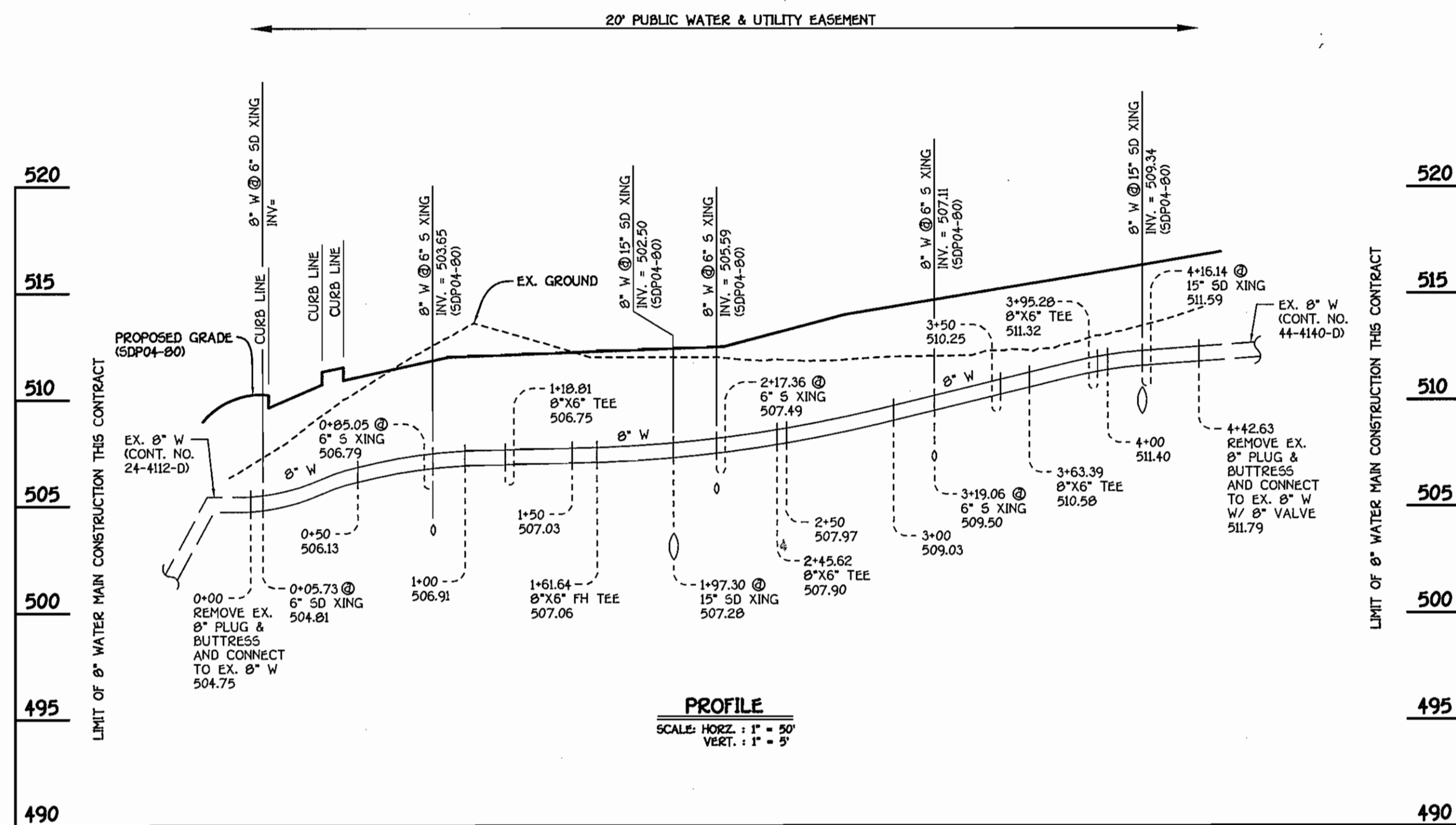
1/8/06  
2/9/05

WATER MAINS  
PLAN VIEW  
600' SCALE MAP NO. 16 BLOCK NO. 4 & 5  
F.C.C. WORK ORDER NO. 40353  
FILE NAME: FINAL WATER MAINS PLAN VIEW SHIT 2

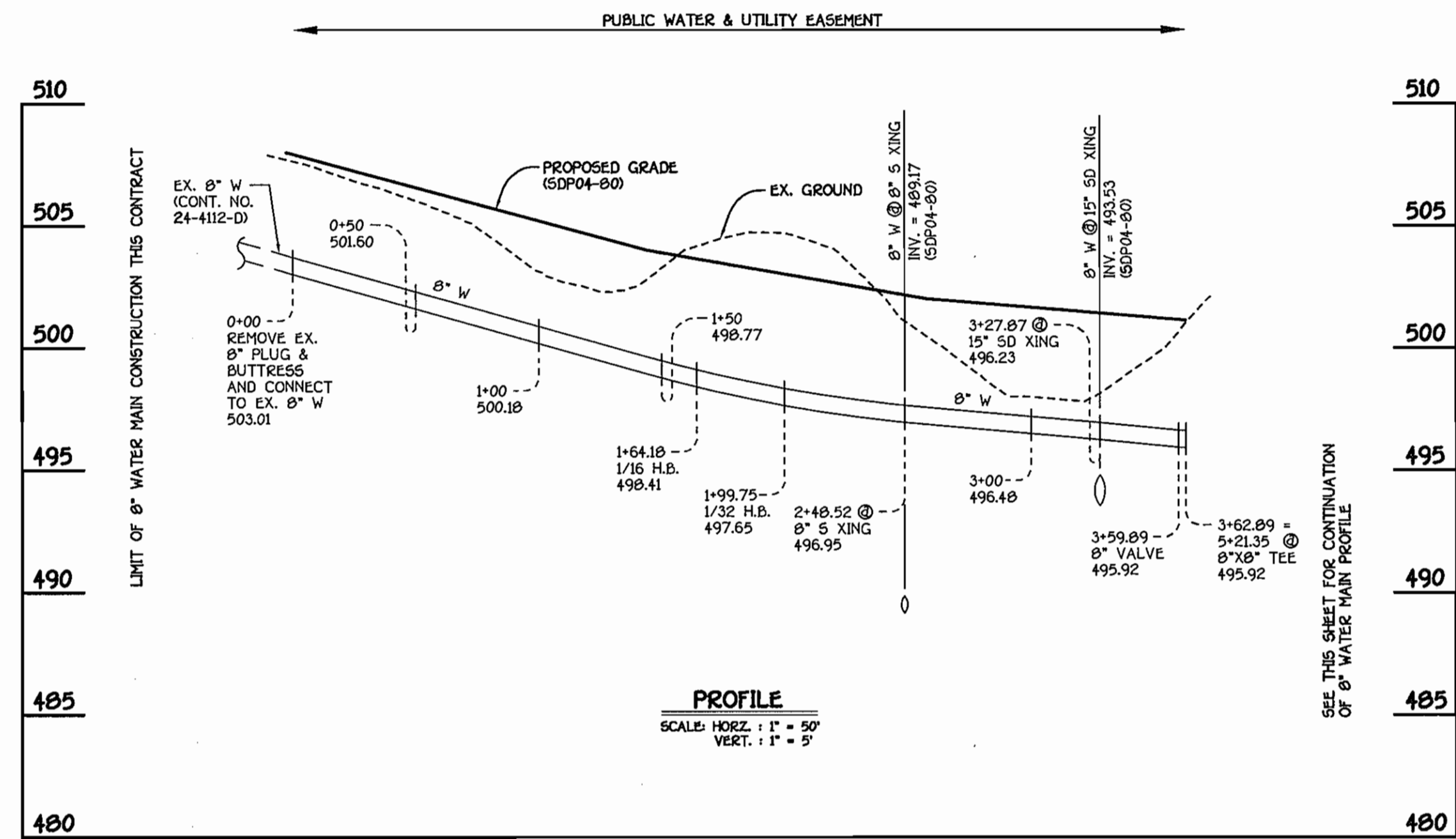
GTW'S WAVERLY WOODS  
SECTION 13: BULK PARCEL 'A'  
"THE COURTYARDS AT WAVERLY WOODS-EAST"  
CHAMBERS COURT, EVENING DEW DRIVE & ENGLISH BOND COURT  
CONTRACT NO. 44-4152-D  
THIRD ELECTION DISTRICT  
HOWARD COUNTY, MARYLAND

SCALE  
AS  
SHOWN  
SHEET  
2 of 4

K:\SDR\PROJ\405356\Watershed\Final\40379 Final Water Mains Phases 2 & 3 Plans.dwg 7/13/2004 7:57:37 AM



**8" WATER MAIN #11: CHAMBERS COURT**



**8" WATER MAIN #12: ENGLISH BOND COURT**

WATER MAIN TABULATION CHART			
W.M. STATION	APPURTENANCE	NORTHING	EASTING
8" WATER MAIN #11			
0+00.00	CONNECT TO EX. 8" W	599840.04	1341669.41
0+00.00	P.C. (CRIMP RADIUS 380')	599840.04	1341669.41
1+18.81	8" X 6" TEE	599928.27	1341660.57
1+28.30	P.T. (CRIMP RADIUS 380')	599967.74	1341661.16
1+61.64	8" X 6" FH TEE	600000.98	1341663.68
2+45.62	8" X 6" TEE	600084.72	1341670.03
3+63.39	8" X 6" TEE	600202.16	1341678.93
3+95.28	8" X 6" TEE	600233.96	1341681.34
4+42.63	CONNECT TO EX. 8" W W/8" VALVE	600279.68	1341684.80

WATER MAIN TABULATION CHART			
W.M. STATION	APPURTENANCE	NORTHING	EASTING
8" WATER MAIN #12			
0+00.00	CONNECT TO EX. 8" W	599928.05	1342050.85
1+64.18	1/16 H.B.	599805.88	1342159.62
1+99.75	1/32 H.B.	599772.60	1342172.20
3+59.89	8" VALVE	599615.56	1342203.54
3+62.89	8" X 8" TEE	599612.62	1342204.15

CONTRACT NO. 44-4152-D  
 GTW'S WAVERLY WOODS  
 SECTION 13: BULK PARCEL 'A'  
 'THE COURTYARDS AT WAVERLY WOODS-EAST'  
 CHAMBERS COURT, EVENING DEW DRIVE &  
 ENGLISH BOND COURT  
 WATER MAIN EXTENSIONS  
 HOWARD COUNTY, MARYLAND

DEPARTMENT OF PUBLIC WORKS  
 HOWARD COUNTY, MARYLAND

DEPARTMENT OF PLANNING AND ZONING  
 HOWARD COUNTY, MARYLAND

FISHER, COLLINS & CARTER, INC.  
 CIVIL ENGINEERING CONSULTANTS & LAND SURVEYORS  
 CENTRAL SQUARE OFFICE PARK - 10272 BALTIMORE NATIONAL PIKE  
 ELKLOTT CITY, MARYLAND 22942  
 (410) 461-2895



DESIGNED BY :	H.D.T.	
DRAWN BY :	M.D.T.	
CHECKED BY :	P.W.K.	
DATE :	JULY, 2004	
BY NO.		REVISION

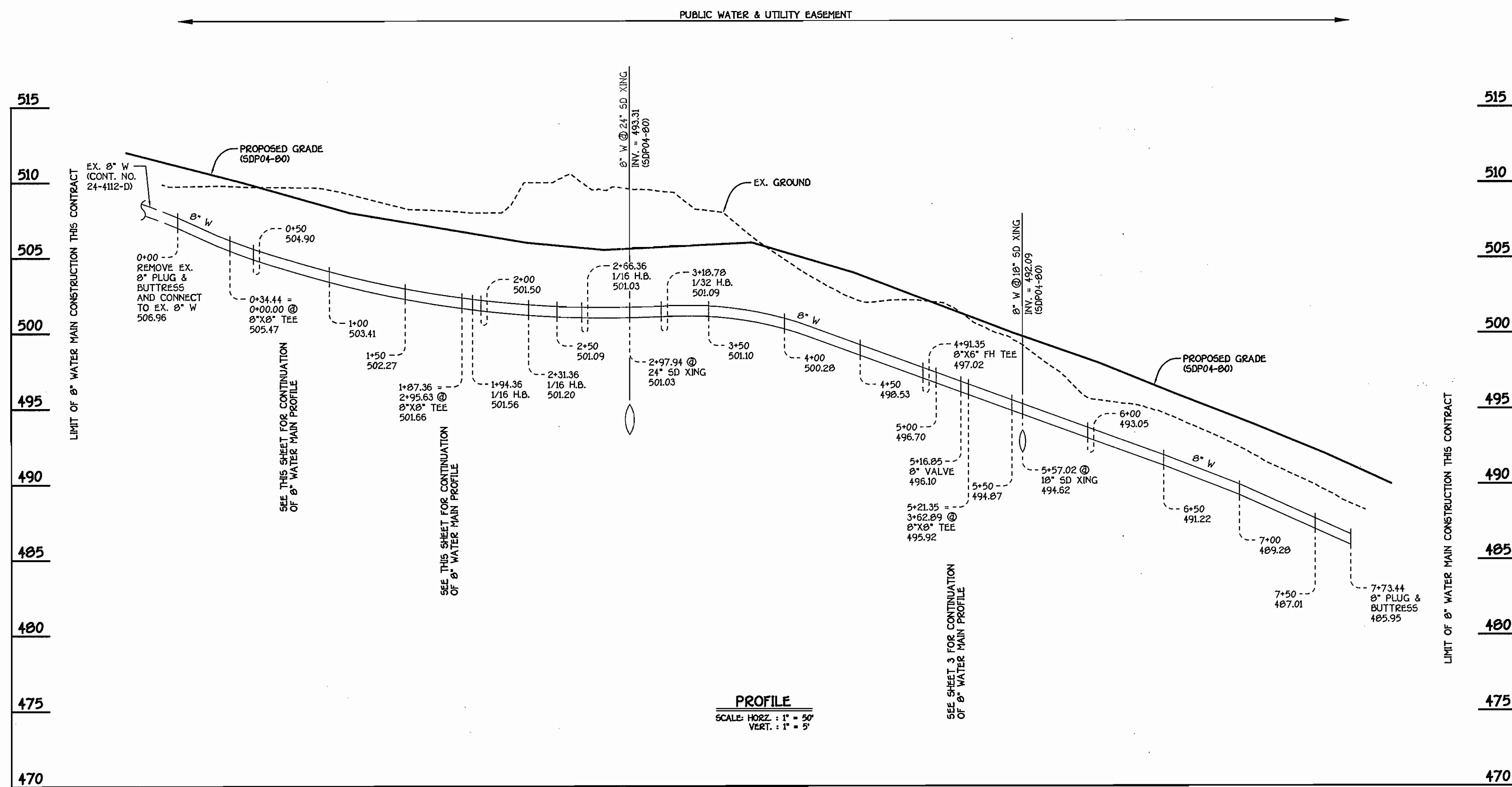
WATER MAINS  
 PROFILES

600' SCALE MAP NO. 16 BLOCK NO. 4 & 5  
 F.C.C. WORK ORDER NO. 40353  
 FILE NAME : FINAL WATER MAINS PROFILES VIEW SHT. 3

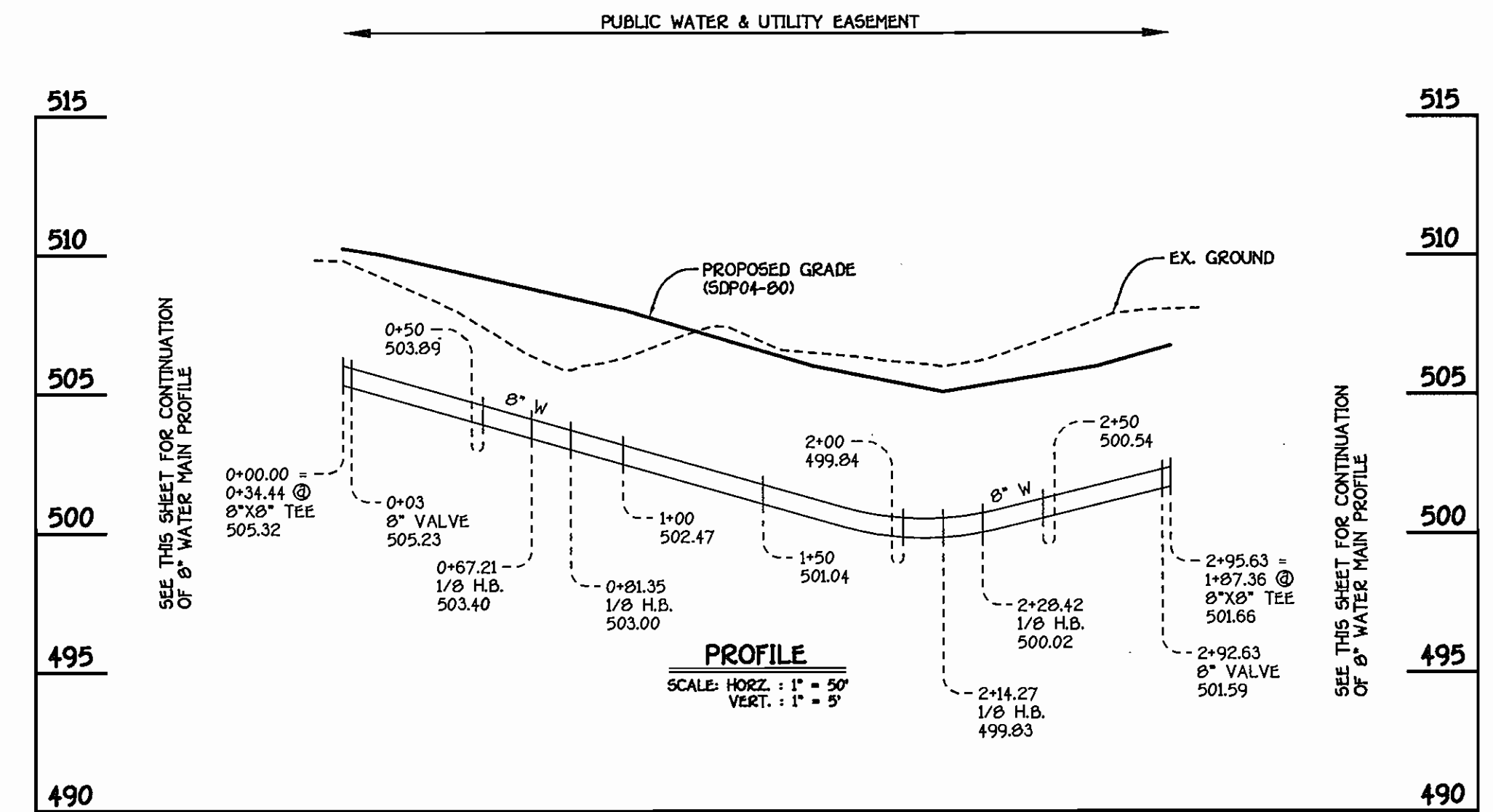
**GTW'S WAVERLY WOODS**  
 SECTION 13: BULK PARCEL 'A'  
 'THE COURTYARDS AT WAVERLY WOODS-EAST'  
 CHAMBERS COURT, EVENING DEW DRIVE & ENGLISH BOND COURT  
 CONTRACT NO. 44-4152-D  
 THIRD ELECTION DISTRICT  
 HOWARD COUNTY, MARYLAND

SCALE AS SHOWN  
 SHEET 3 OF 4

K:\SD\FPROJ\40353\dwg\WaterMain\Profiles Phases 2 & 3.dwg, 7/13/2004 8:13:05 AM



**8" WATER MAIN #13: EVENING DEW DRIVE**



**8" WATER MAIN #14: EVENING DEW DRIVE**

W.M. STATION	APPURTENANCE	NORTHING	EASTING
8" WATER MAIN #13			
0+00.00	CONNECT TO 8" W	599791.49	1341823.39
0+34.44	8" X 8" TEE	599759.39	1341835.89
1+87.36	8" X 8" TEE	599816.87	1341891.32
1+94.36	1/8 H.B.	599810.35	1341893.86
2+31.36	1/8 H.B.	599584.76	1341920.59
2+66.36	1/8 H.B.	599571.80	1341953.10
3+18.78	1/32 H.B.	599572.95	1342005.50
4+91.35	8" X 6" FH TEE	599806.74	1342174.73
5+16.85	8" VALVE	599811.74	1342195.74
5+21.35	8" X 8" TEE	599812.62	1342204.15
7+73.44	8" PLUG & BUTTRESS	599661.99	1342451.36

LOT	FROM	TO	DIST.	LOT	FROM	TO	DIST.
60	WMC	MH 460	45'	80	WMC	WMC 84	45'
61	"	WMC 60	38	86	"	WMC 78	15
62	"	WMC 61	32	86	"	MH 440	26
63	"	WMC 63	36	87	"	WMC 87	15
63	"	WMC 64	38	87	"	MH 440	41
64	"	MH 456	65	87	"	SD INLET	42
64	"	"	38	88	"	WMC 89	15
65	"	WMC 65	25	89	"	WMC 95	62
65	"	MH 465	14	90	"	WMC 70	15
66	"	MH 460	5	90	"	WMC 11	10
66	"	SDMH	34	90	"	WMC 87	46
67	"	MH 450	24	91	"	"	50
67	"	MH 455	46	92	"	WMC 73	10
68	"	"	15	92	"	WMC 74	49
69	"	MH 460	57	93	"	WMC 74	49
69	"	"	87	93	"	WMC 72	29
69	"	MH 445	23	95	"	"	45
70	"	"	28	96	"	WMC 91	51
71	"	WMC 71	31	97	"	WMC 95	10
71	"	WMC 72	29	97	"	WMC 78	10
71	"	WMC 101	44	97	"	WMC 76	50
72	"	WMC 73	32	98	"	WMC 88	59
72	"	WMC 100	44	98	"	WMC 89	52
73	"	WMC 74	25	99	"	FIL	38
74	"	6" V	43	100	"	6" V	41
74	"	"	33	100	"	WMC 101	37
75	"	SD INLET	45	100	"	WMC 73	56
75	"	6" V	46	101	"	WMC 71	48
76	"	MH 440	52	102	"	WMC 102	13
76	"	SD INLET	61	102	"	WMC 70	45
77	"	"	86	103	"	WMC 104	33
77	"	MH 440	77	103	"	6" V	64
78	"	WMC 77	33	104	"	WMC 105	10
79	"	MH 435	95	105	"	WMC 106	50
79	"	WMC 78	30	106	"	WMC 107	17
80	"	MH 435	61	107	"	6" V	32
81	"	WMC 79	35	107	"	8" V	33
81	"	MH 435	40	107	"	8" V	33
82	"	WMC 80	22	107	"	B" V	43
82	"	MH 435	77	107	"	B" V	37
83	"	WMC 83	16	107	"	FIL	24
83	"	MH 435	91	107	"	"	43
84	"	WMC 78	40	107	"	"	43

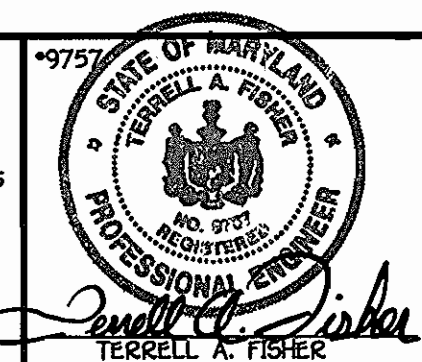
W.M. STATION	APPURTENANCE	NORTHING	EASTING
8" WATER MAIN #14			
0+00.00	8" X 8" TEE	599759.39	1341833.08
0+03.00	8" VALVE	599758.30	1341835.89
0+67.21	1/8 H.B.	599735.02	1341773.24
0+81.35	1/8 H.B.	599722.09	1341767.54
2+14.27	1/8 H.B.	599598.20	1341815.74
2+28.41	1/8 H.B.	599592.50	1341828.68
2+92.63	8" VALVE	599615.78	1341828.52
2+95.63	8" X 8" TEE	599615.87	1341891.32

CONTRACT NO. 44-4152-D  
 GTW'S WAVERLY WOODS  
 SECTION 13: BULK PARCEL 'A'  
 THE COURTYARDS AT WAVERLY WOODS-EAST  
 CHAMBERS COURT, EVENING DEW DRIVE &  
 ENGLISH BOND COURT  
 WATER MAIN EXTENSIONS  
 HOWARD COUNTY, MARYLAND

DEPARTMENT OF PUBLIC WORKS  
 HOWARD COUNTY, MARYLAND

DEPARTMENT OF PLANNING AND ZONING  
 HOWARD COUNTY, MARYLAND

FISHER, COLLINS & CARTER, INC.  
 CIVIL ENGINEERING CONSULTANTS & LAND SURVEYORS  
 CENTRAL SQUARE OFFICE PARK - 10272 BALTIMORE NATIONAL PRZ  
 ELICOTT CITY, MARYLAND 21042  
 410.461.2000



DESIGNED BY: M.D.T.  
 DRAWN BY: M.D.T.  
 CHECKED BY: P.W.K.  
 DATE: JULY, 2004

WATER AS-BUILT DATA ADDED  
 REVISION  
 DATE: 11/8/06  
 BY: NO.

WATER MAINS  
 PROFILES

600' SCALE MAP NO. 16 BLOCK NO. 4 & 5  
 F.C.C. WORK ORDER NO. 40353  
 FILE NAME: FINAL WATER MAINS PROFILES SH1 4

GTW'S WAVERLY WOODS  
 SECTION 13: BULK PARCEL 'A'  
 THE COURTYARDS AT WAVERLY WOODS-EAST  
 CHAMBERS COURT, EVENING DEW DRIVE & ENGLISH BOND COURT  
 CONTRACT NO. 44-4152-D  
 THIRD ELECTION DISTRICT  
 HOWARD COUNTY, MARYLAND

SCALE  
 AS  
 SHOWN  
 SHEET  
 4 OF 4

K:\SDS\PROJECTS\44-4152-D\Water Main Profiles Phases 2 & 3.dwg, 7/13/2004 8:13:44 AM