


GENERAL NOTES

PART I

- APPROXIMATE LOCATION OF EXISTING MAINS ARE SHOWN. THE CONTRACTOR SHALL TAKE ALL NECESSARY PRECAUTIONS TO PROTECT EXISTING MAINS AND SERVICES AND MAINTAIN UNINTERRUPTED SERVICE. ANY DAMAGE INCURRED SHALL BE REPAIRED IMMEDIATELY TO THE SATISFACTION OF THE ENGINEER AT THE CONTRACTOR'S EXPENSE.
- ALL HORIZONTAL CONTROLS ARE BASED ON MARYLAND STATE COORDINATES. (NORTH AMERICAN DATUM OF 1983 (NAD 83))
- ALL VERTICAL CONTROLS ARE BASED ON U.S.G.S. DATA.
- ALL PIPE ELEVATIONS SHOWN ARE INVERT ELEVATIONS.
- CLEAR ALL UTILITIES BY A MINIMUM OF 12 INCHES. CLEAR ALL POLES BY 2'.0" MINIMUM OR TUNNEL AS REQUIRED UNLESS OTHERWISE NOTED. THE OWNER HAS CONTACTED THE UTILITY COMPANIES AND HAS MADE ARRANGEMENTS FOR BRACING OF POLES AS SHOWN ON DRAWINGS IN THE EVENT THE CONTRACTOR'S WORK REQUIRES THE BRACING OF ADDITIONAL POLES, ANY COST INCURRED BY THE OWNER FOR BRACING OF ADDITIONAL POLES OR DAMAGES SHALL BE DEDUCTED FROM MONIES OWED THE CONTRACTOR. THE CONTRACTOR SHALL COORDINATE WITH THE UTILITY COMPANIES TO SCHEDULE THE BRACING OF THE POLES.
- FOR DETAILS NOT SHOWN ON THE DRAWINGS, AND FOR MATERIALS AND CONSTRUCTION METHODS USE HOWARD COUNTY DESIGN MANUAL, VOLUME IV, STANDARD SPECIFICATIONS AND DETAILS FOR CONSTRUCTION (LATEST EDITION). THE CONTRACTOR SHALL HAVE A COPY OF VOLUME IV ON THE JOB.
- WHERE TEST PITS HAVE BEEN MADE ON EXISTING UTILITIES, THEY ARE NOTED BY THE SYMBOL  AT THE LOCATION OF THE TEST PIT. A NOTES OR NOTES CONTAINING THE RESULTS OF THE TEST PIT OR PITS IS INCLUDED ON THE DRAWINGS. EXISTING UTILITIES IN THE VICINITY OF THE PROPOSED WORK FOR WHICH TEST PITS HAVE NOT BEEN DUG SHALL BE LOCATED BY THE CONTRACTOR TWO WEEKS IN ADVANCE OF CONSTRUCTION OPERATION AT HIS OWN EXPENSE.
- THE CONTRACTOR SHALL NOTIFY THE FOLLOWING UTILITY COMPANIES OR AGENCIES AT LEAST FIVE WORKING DAYS BEFORE STARTING WORK SHOWN THESE PLANS:
 AT & T 1-800-252-1133
 BGE (CONTRACTOR SERVICE) 410-850-4620
 BGE (UNDERGROUND DAMAGE CONTROL) 410-291-4607
 BUREAU OF UTILITIES 410-313-4900
 COLONIAL PIPELINE CO. 410-549-4120
 MISS UTILITY 1-800-257-7777
 STATE HIGHWAY ADMINISTRATION 410-531-5533
 VERIZON 1-800-743-0033/410-224-9210
- TREES AND SHRUBS ARE TO BE PROTECTED FROM DAMAGE TO THE MAXIMUM EXTENT. TREES AND SHRUBS LOCATED WITHIN THE CONSTRUCTION STRIP ARE NOT TO BE REMOVED OR DAMAGED BY THE CONTRACTOR
- THE CONTRACTOR SHALL REMOVE TREES, STUMPS AND ROOTS ALONG THE LINE OF EXCAVATION. PAYMENT FOR SUCH REMOVAL SHALL BE INCLUDED IN THE UNIT PRICE BID FOR THE CONSTRUCTION OF THE MAIN.
- THE CONTRACTOR SHALL NOTIFY THE BUREAU OF HIGHWAYS, HOWARD COUNTY, AT (410) 313-7450 AT LEAST FIVE WORKING DAYS BEFORE ANY OPEN CUTTING OR BORING JACKING OF ANY COUNTY ROAD FOR LAYING BORING/JACKING OPERATION IN COUNTY ROADS FOR LAYING WATER/SEWER MAIN OR HOUSE CONNECTIONS. THE APPROVAL OF THESE DRAWINGS WILL CONSTITUTE COMPLIANCE WITH DPW REQUIREMENTS PER SECTION 18.114(a) OF THE HOWARD COUNTY CODE.
- THE CONTRACTOR SHALL EXERCISE EXTREME CAUTION WHEN WORKING NEAR AND/OR AROUND OVERHEAD UTILITY WIRES.

PART II - WATER

- ALL WATER MAINS TO BE D.I.P. CLASS 52 UNLESS OTHERWISE NOTED.
- TOPS OF ALL WATER MAINS TO HAVE A MINIMUM OF 3'-6" COVER UNLESS OTHERWISE NOTED.
- VALVES ADJACENT TO TEES SHALL BE STRAPPED TO TEES.
- ALL FITTINGS SHALL BE BUTTRESSED OR ANCHORED WITH CONCRETE IN ACCORDANCE WITH THE STANDARD DETAILS UNLESS OTHERWISE PROVIDED FOR ON THE DRAWINGS.
- FIRE HYDRANTS SHALL BE SET TO THE BURY LINE ELEVATIONS SHOWN ON THE DRAWINGS. ALL FIRE HYDRANTS SHALL BE RESTRAINED AND BUTTRESSED WITH CONCRETE IN ACCORDANCE WITH STANDARD DETAILS. THE SOIL AROUND THE FIRE HYDRANT SHALL BE COMPACTED IN ACCORDANCE WITH SECTION 1000 AND 1005 OF THE STANDARD SPECIFICATIONS.
- THE CONTRACTOR SHALL NOT OPERATE ANY WATER MAIN VALVES ON THE EXISTING WATER SYSTEM.
- ALL WATER HOUSE CONNECTIONS SHALL BE FOR INSIDE METER SETTING UNLESS OTHERWISE NOTED ON PLANS OR IN SPECIFICATIONS.

SEDIMENT CONTROL MEASURES WILL BE IMPLEMENTED IN ACCORDANCE WITH SECTION 219 OF THE SPECIFICATIONS AND WITH SITE DEVELOPMENT PLAN SDP-03-92

THIS DEVELOPMENT IS APPROVED FOR SOIL EROSION AND SEDIMENT CONTROL BY THE HOWARD COUNTY SOIL CONSERVATION DISTRICT.

REVIEWED FOR HOWARD COUNTY SOIL CONSERVATION DISTRICT AND MEETS TECHNICAL REQUIREMENTS.

John R. Robertson
SOIL CONSERVATION DISTRICT

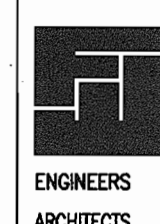
9/18/03
DATE

Jim Meyer
S. SOIL CONSERVATION DISTRICT

9/18/03
DATE

DEPARTMENT OF PUBLIC WORKS
HOWARD COUNTY, MARYLAND

DEPARTMENT OF PLANNING & ZONING
HOWARD COUNTY, MARYLAND



FREDERICK WARD ASSOCIATES, INC.
7125 Riverwood Drive Columbia, Maryland 21046-2354
Phone: 410-290-9550 Fax: 410-720-6226
Bel Air, Maryland Columbia, Maryland Warrenton, Virginia



DES:	JWW				
DRN:	JWW				
CHK:	RHV				
DATE:	AUGUST 2003	BY	NO.	REVISION	DATE

**FINAL WATER CONSTRUCTION PLAN
TITLE SHEET**

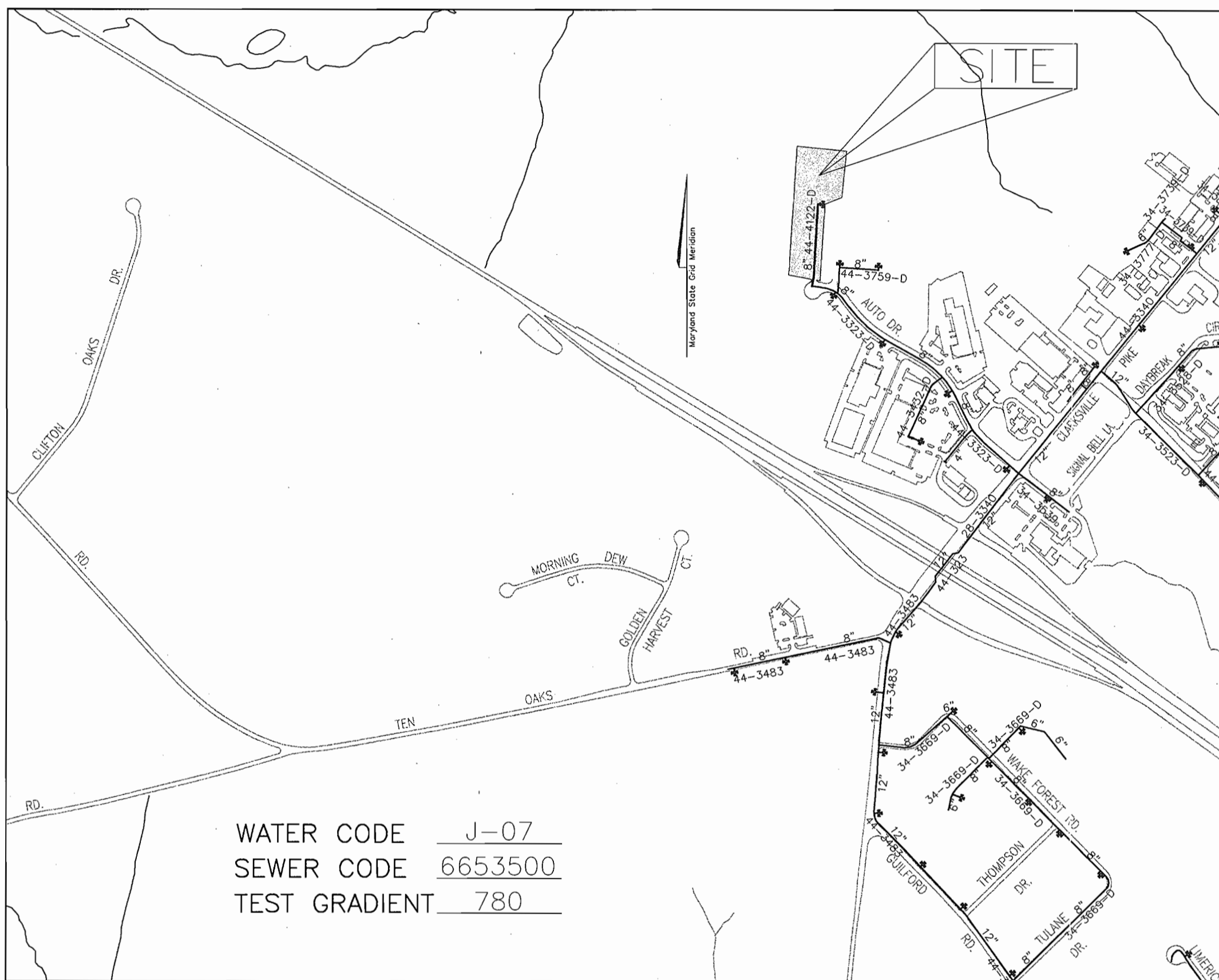
**ANTWERPEN NISSAN
CONTRACT NO. 44-4122-D**

SCALE AS SHOWN

SHEET 1 OF 2

TAX MAP 34, BLOCK 6
5TH ELECTION DISTRICT

PARCEL L-1
HOWARD COUNTY, MARYLAND



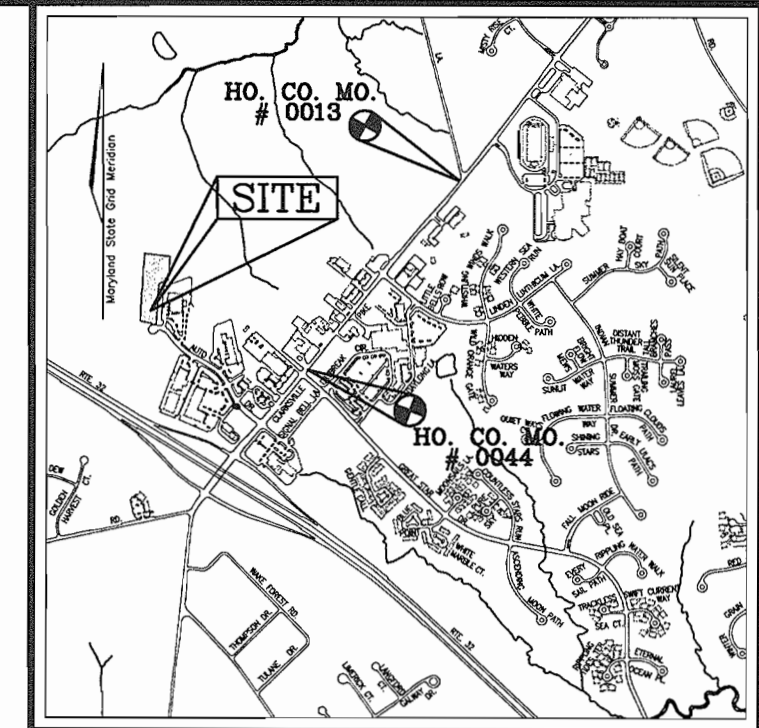
LOCATION MAP

SCALE: 1"=600'

TYPE OF BUILDING:	COMMERCIAL
NO. OF UNITS/PARCELS:	ONE
NO. OF WATER HOUSE CONNECTIONS:	ONE
NO. OF SEWER HOUSE CONNECTIONS:	ONE
DRAINAGE AREA:	MIDDLE PATUXENT RIVER
TREATMENT PLANT:	LITTLE PATUXENT RIVER WATER TREATMENT PLANT

BENCHMARKS

- HOWARD COUNTY BENCHMARK 34C2 (DESTROYED)
N 562321.798 E 1329750.722
- HOWARD COUNTY BENCHMARK 0013
N 564285.946 E 1331309.715
ELEVATION 484.671'
- HOWARD COUNTY BENCHMARK 0044
N 562176.474 E 1329641.868
ELEVATION 485.252'



VICINITY MAP
SCALE: 1"=2000'

WATER MAIN STRUCTURE SCHEDULE

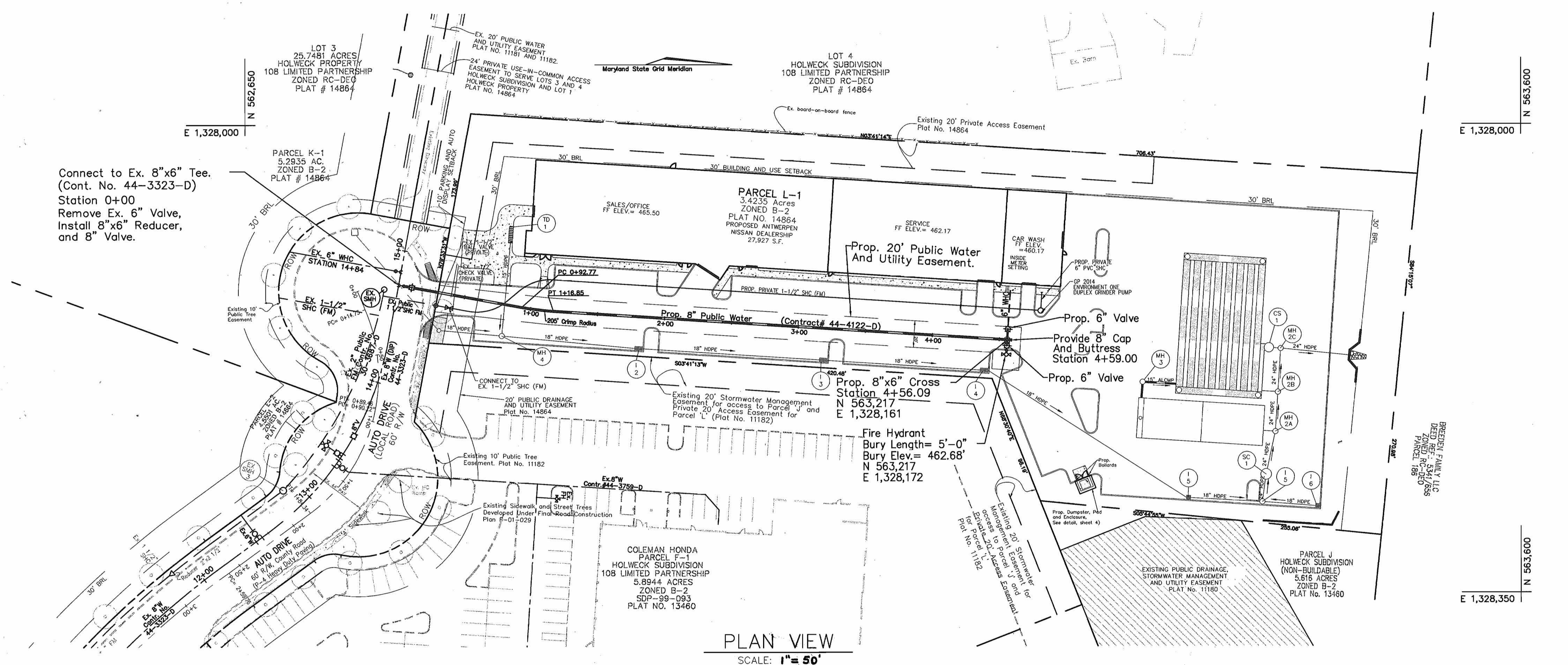
STATION	DESCRIPTION
0+04	8"x6" REDUCER
0+10	8" VALVE
4+58.09	8" x 6" CROSS (6" VALVE AND 6" F.H. - RT.) (6" WHC AND 6" VALVE - LT.)
4+59	8" CAP AND BUTTRESS

QUANTITIES

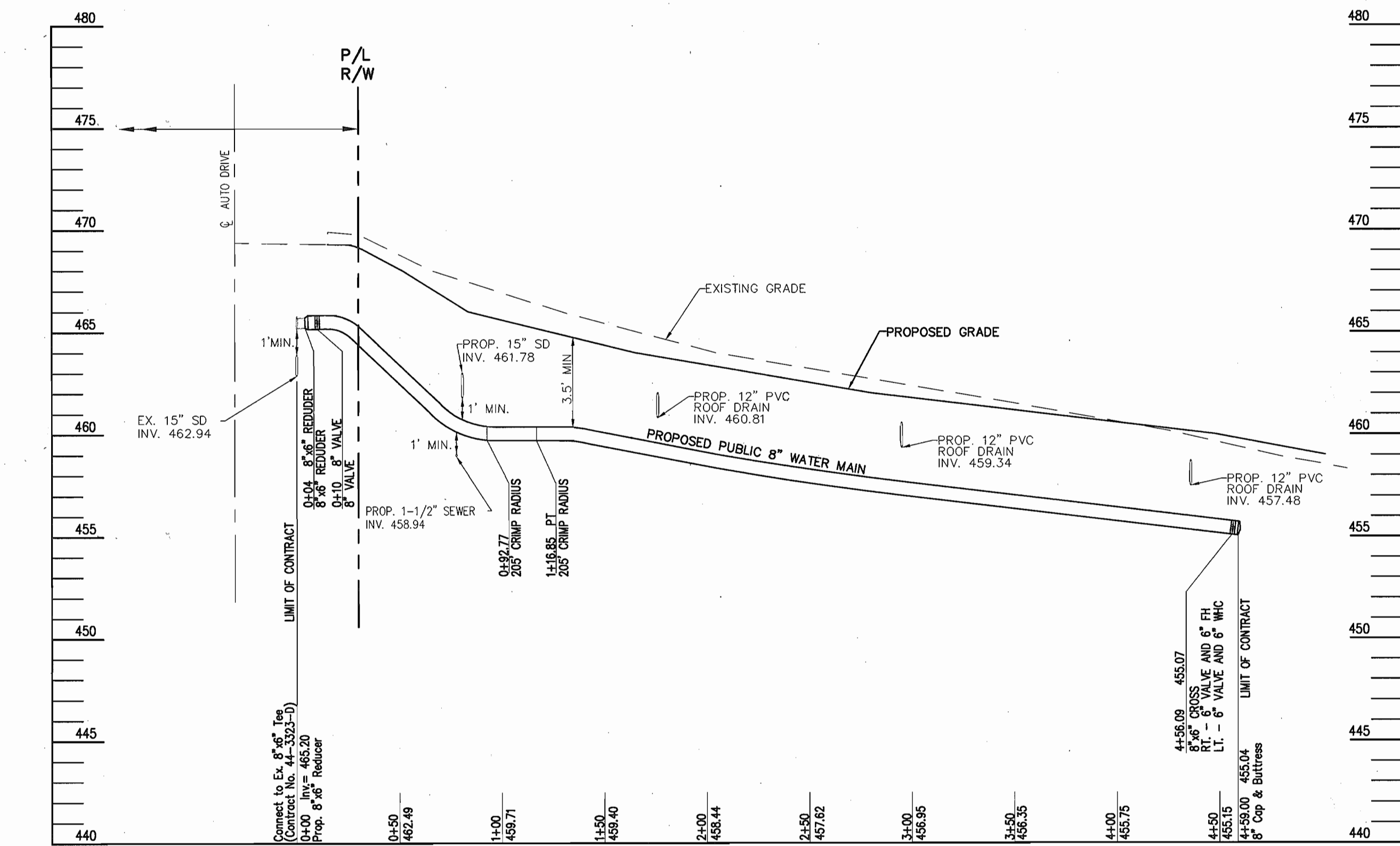
NAME OF UTILITY CONTRACTOR :				
SURVEY AND DRAFTING DIVISION AS-BUILT DATE :				
ITEMS	QUANTITIES ESTIMATED	AS-BUILT		
		QUANTITIES	TYPE	MANUFACTURER/SUPPLIER
8" x 6" REDUCER	1 EA.			
8" VALVE	1 EA.			
8" WATER	459 L.F.			
6" WATER	22 L.F.			
8" x 6" CROSS	1 EA.			
6" VALVE	2 EA.			
FIRE HYDRANT	1 EA.			
8" CAP & BUTTRESS	1 EA.			

OWNER/DEVELOPER

Antoy LLC
12451 Auto Drive
Clarksville, MD 21029-1266



PLAN VIEW
SCALE: 1" = 50'



WATER PROFILE
SCALE: HOR. 1" = 50'
VERT. 1" = 50'

SEDIMENT CONTROL MEASURES WILL BE IMPLEMENTED IN ACCORDANCE WITH SECTION 219 OF THE SPECIFICATIONS AND WITH SITE DEVELOPMENT PLAN SDP-03-92

THIS DEVELOPMENT IS APPROVED FOR SOIL EROSION AND SEDIMENT CONTROL BY THE HOWARD COUNTY SOIL CONSERVATION DISTRICT.

REVIEWED FOR HOWARD COUNTY SOIL CONSERVATION DISTRICT AND MEETS TECHNICAL REQUIREMENTS.

John R. Robertson 9/18/03
SOIL CONSERVATION DISTRICT DATE

Jim Myers 9/18/03
S.S. SOIL CONSERVATION DISTRICT DATE

DEPARTMENT OF PUBLIC WORKS
HOWARD COUNTY, MARYLAND

Robert B. ... 9-29-03
CHIEF, BUREAU OF UTILITIES DATE

DEPARTMENT OF PLANNING & ZONING
HOWARD COUNTY, MARYLAND

... 9/10/03
CHIEF, DEVELOPMENT ENGINEERING DIVISION DATE

FREDERICK WARD ASSOCIATES, INC.
ENGINEERS ARCHITECTS SURVEYORS
7125 Riverwood Drive Columbia, Maryland 21046-2354
Phone: 410-290-9550 Fax: 410-720-6226
Bel Air, Maryland Columbia, Maryland Warrenton, Virginia



DES: JWW					
DRN: JWW					
CHK: RHV					
DATE: AUGUST 2003	BY: NO.	REVISION	DATE	600' SCALE MAP NO. 34	BLOCK NO. 6

FINAL WATER CONSTRUCTION PLAN
PLAN SHEET & PROFILE

ANTWERPEN NISSAN
CONTRACT NO. 44-4122-D

TAX MAP 34, BLOCK 6
5TH ELECTION DISTRICT

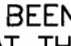
PARCEL L-1
HOWARD COUNTY, MARYLAND

SCALE AS SHOWN

SHEET 2 OF 2

GENERAL NOTES

PART I

- APPROXIMATE LOCATION OF EXISTING MAINS ARE SHOWN. THE CONTRACTOR SHALL TAKE ALL NECESSARY PRECAUTIONS TO PROTECT EXISTING MAINS AND SERVICES AND MAINTAIN UNINTERRUPTED SERVICE. ANY DAMAGE INCURRED SHALL BE REPAIRED IMMEDIATELY TO THE SATISFACTION OF THE ENGINEER AT THE CONTRACTOR'S EXPENSE.
- ALL HORIZONTAL CONTROLS ARE BASED ON MARYLAND STATE COORDINATES. (NORTH AMERICAN DATUM OF 1983 (NAD 83))
- ALL VERTICAL CONTROLS ARE BASED ON U.S.G.S. DATA.
- ALL PIPE ELEVATIONS SHOWN ARE INVERT ELEVATIONS.
- CLEAR ALL UTILITIES BY A MINIMUM OF 12 INCHES. CLEAR ALL POLES BY 2'-0" MINIMUM OR TUNNEL AS REQUIRED UNLESS OTHERWISE NOTED. THE OWNER HAS CONTACTED THE UTILITY COMPANIES AND HAS MADE ARRANGEMENTS FOR BRACING OF POLES AS SHOWN ON DRAWINGS IN THE EVENT THE CONTRACTOR'S WORK REQUIRES THE BRACING OF ADDITIONAL POLES. ANY COST INCURRED BY THE OWNER FOR BRACING OF ADDITIONAL POLES OR DAMAGES SHALL BE DEDUCTED FROM MONIES OWED THE CONTRACTOR. THE CONTRACTOR SHALL COORDINATE WITH THE UTILITY COMPANIES TO SCHEDULE THE BRACING OF THE POLES.
- FOR DETAILS NOT SHOWN ON THE DRAWINGS, AND FOR MATERIALS AND CONSTRUCTION METHODS USE HOWARD COUNTY DESIGN MANUAL, VOLUME IV, STANDARD SPECIFICATIONS AND DETAILS FOR CONSTRUCTION (LATEST EDITION). THE CONTRACTOR SHALL HAVE A COPY OF VOLUME IV ON THE JOB.
- WHERE TEST PITS HAVE BEEN MADE ON EXISTING UTILITIES, THEY ARE NOTED BY THE SYMBOL  AT THE LOCATION OF THE TEST PIT. A NOTES OR NOTES CONTAINING THE RESULTS OF THE TEST PIT OR PITS IS INCLUDED ON THE DRAWINGS. EXISTING UTILITIES IN THE VICINITY OF THE PROPOSED WORK FOR WHICH TEST PITS HAVE NOT BEEN DUG SHALL BE LOCATED BY THE CONTRACTOR TWO WEEKS IN ADVANCE OF CONSTRUCTION OPERATION AT HIS OWN EXPENSE.
- THE CONTRACTOR SHALL NOTIFY THE FOLLOWING UTILITY COMPANIES OR AGENCIES AT LEAST FIVE WORKING DAYS BEFORE STARTING WORK SHOWN THESE PLANS:
 AT &T 1-800-252-1133
 BGE (CONTRACTOR SERVICE) 410-850-4620
 BGE (UNDERGROUND DAMAGE CONTROL) 410-291-4607
 BUREAU OF UTILITIES 410-313-4900
 COLONIAL PIPELINE CO 410-549-4120
 MISS UTILITY 1-800-257-7777
 STATE HIGHWAY ADMINISTRATION 410-531-5533
 VERIZON 1-800-743-0033/410-224-9210
- TREES AND SHRUBS ARE TO BE PROTECTED FROM DAMAGE TO THE MAXIMUM EXTENT. TREES AND SHRUBS LOCATED WITHIN THE CONSTRUCTION STRIP ARE NOT TO BE REMOVED OR DAMAGED BY THE CONTRACTOR
- THE CONTRACTOR SHALL REMOVE TREES, STUMPS AND ROOTS ALONG THE LINE OF EXCAVATION. PAYMENT FOR SUCH REMOVAL SHALL BE INCLUDED IN THE UNIT PRICE BID FOR THE CONSTRUCTION OF THE MAIN.
- THE CONTRACTOR SHALL NOTIFY THE BUREAU OF HIGHWAYS, HOWARD COUNTY, AT (410) 313-7450 AT LEAST FIVE WORKING DAYS BEFORE ANY OPEN CUTTING OR BORING JACKING OF ANY COUNTY ROAD FOR LAYING BORING/JACKING OPERATION IN COUNTY ROADS FOR LAYING WATER/SEWER MAIN OR HOUSE CONNECTIONS. THE APPROVAL OF THESE DRAWINGS WILL CONSTITUTE COMPLIANCE WITH DPW REQUIREMENTS PER SECTION 18.114(a) OF THE HOWARD COUNTY CODE.
- THE CONTRACTOR SHALL EXERCISE EXTREME CAUTION WHEN WORKING NEAR AND/OR AROUND OVERHEAD UTILITY WIRES.

PART II - WATER

- ALL WATER MAINS TO BE D.I.P. CLASS 52 UNLESS OTHERWISE NOTED.
- TOPS OF ALL WATER MAINS TO HAVE A MINIMUM OF 3'-6" COVER UNLESS OTHERWISE NOTED.
- VALVES ADJACENT TO TEES SHALL BE STRAPPED TO TEES.
- ALL FITTINGS SHALL BE BUTTRESSED OR ANCHORED WITH CONCRETE IN ACCORDANCE WITH THE STANDARD DETAILS UNLESS OTHERWISE PROVIDED FOR ON THE DRAWINGS.
- FIRE HYDRANTS SHALL BE SET TO THE BURY LINE ELEVATIONS SHOWN ON THE DRAWINGS. ALL FIRE HYDRANTS SHALL BE RESTRAINED AND BUTTRESSED WITH CONCRETE IN ACCORDANCE WITH STANDARD DETAILS. THE SOIL AROUND THE FIRE HYDRANT SHALL BE COMPACTED IN ACCORDANCE WITH SECTION 1000 AND 1005 OF THE STANDARD SPECIFICATIONS.
- THE CONTRACTOR SHALL NOT OPERATE ANY WATER MAIN VALVES ON THE EXISTING WATER SYSTEM.
- ALL WATER HOUSE CONNECTIONS SHALL BE FOR INSIDE METER SETTING UNLESS OTHERWISE NOTED ON PLANS OR IN SPECIFICATIONS.

SEDIMENT CONTROL MEASURES WILL BE IMPLEMENTED IN ACCORDANCE WITH SECTION 219 OF THE SPECIFICATIONS AND WITH SITE DEVELOPMENT PLAN SDP-03-92

THIS DEVELOPMENT IS APPROVED FOR SOIL EROSION AND SEDIMENT CONTROL BY THE HOWARD COUNTY SOIL CONSERVATION DISTRICT.

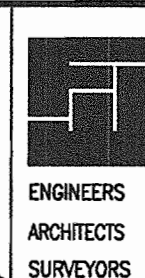
REVIEWED FOR HOWARD COUNTY SOIL CONSERVATION DISTRICT AND MEETS TECHNICAL REQUIREMENTS.

John R. Robertson 9/8/03
 SOIL CONSERVATION DISTRICT DATE

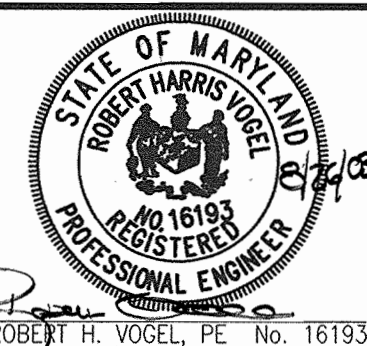
Jim Mages 9/8/03
 S. SOIL CONSERVATION DISTRICT DATE

DEPARTMENT OF PUBLIC WORKS
 HOWARD COUNTY, MARYLAND

DEPARTMENT OF PLANNING & ZONING
 HOWARD COUNTY, MARYLAND



FREDERICK WARD ASSOCIATES, INC.
 7125 Riverwood Drive Columbia, Maryland 21046-2354
 Phone: 410-290-9550 Fax: 410-720-6226
 Bel Air, Maryland Columbia, Maryland Warrenton, Virginia



DES:	JWW			
DRN:	JWW			
CHK:	RHV			
DATE:	AUGUST 2003	BY	NO.	REVISION

FINAL WATER CONSTRUCTION PLAN
TITLE SHEET

ANTWERPEN NISSAN
CONTRACT NO. 44-4122-D

SCALE
 AS SHOWN

SHEET
 1 OF 2

R. H. Vogel 8-29-03
 CHIEF, BUREAU OF UTILITIES DATE

Jim Mages 9/10/03
 CHIEF, DEVELOPMENT ENGINEERING DIVISION DATE

OWNER/DEVELOPER

Antoy LLC
 12451 Auto Drive
 Clarksville, MD 21029-1266



LOCATION MAP

SCALE: 1"=600'

TYPE OF BUILDING:	COMMERCIAL
NO. OF UNITS/PARCELS:	ONE
NO. OF WATER HOUSE CONNECTIONS:	ONE
NO. OF SEWER HOUSE CONNECTIONS:	ONE
DRAINAGE AREA:	MIDDLE PATUXENT RIVER
TREATMENT PLANT:	LITTLE PATUXENT RIVER WATER TREATMENT PLANT

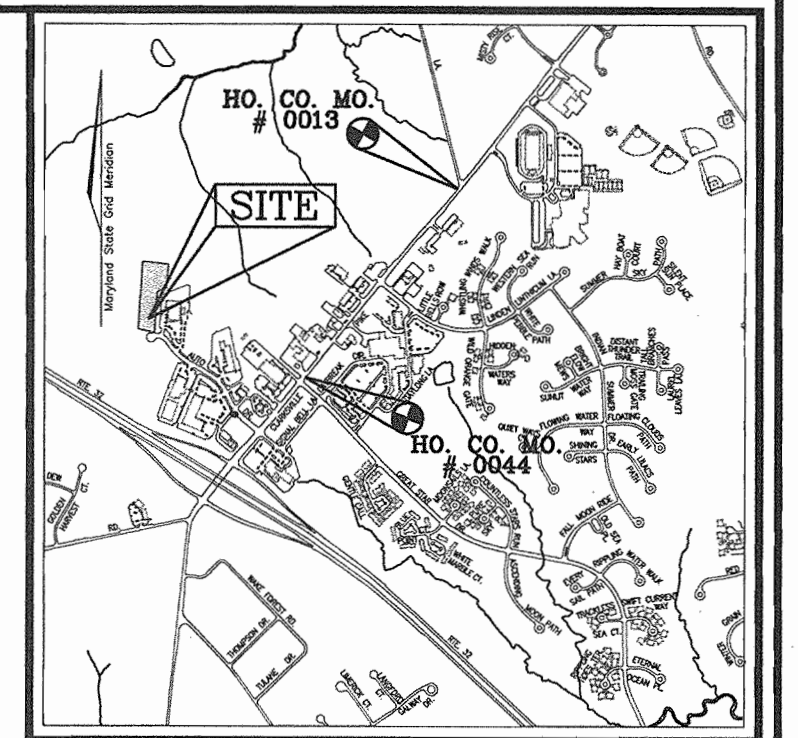
AS BUILT
 DATE: MARCH 12, 2004

WATER MAIN STRUCTURE SCHEDULE

STATION	DESCRIPTION
0+04	8"x6" REDUCER
0+10	8" VALVE
4+56.09	8" x 6" CROSS (6" VALVE AND 6" F.H. - RT.) (6" WMC AND 6" VALVE - LT.)
4+59	8" CAP AND BUTTRESS

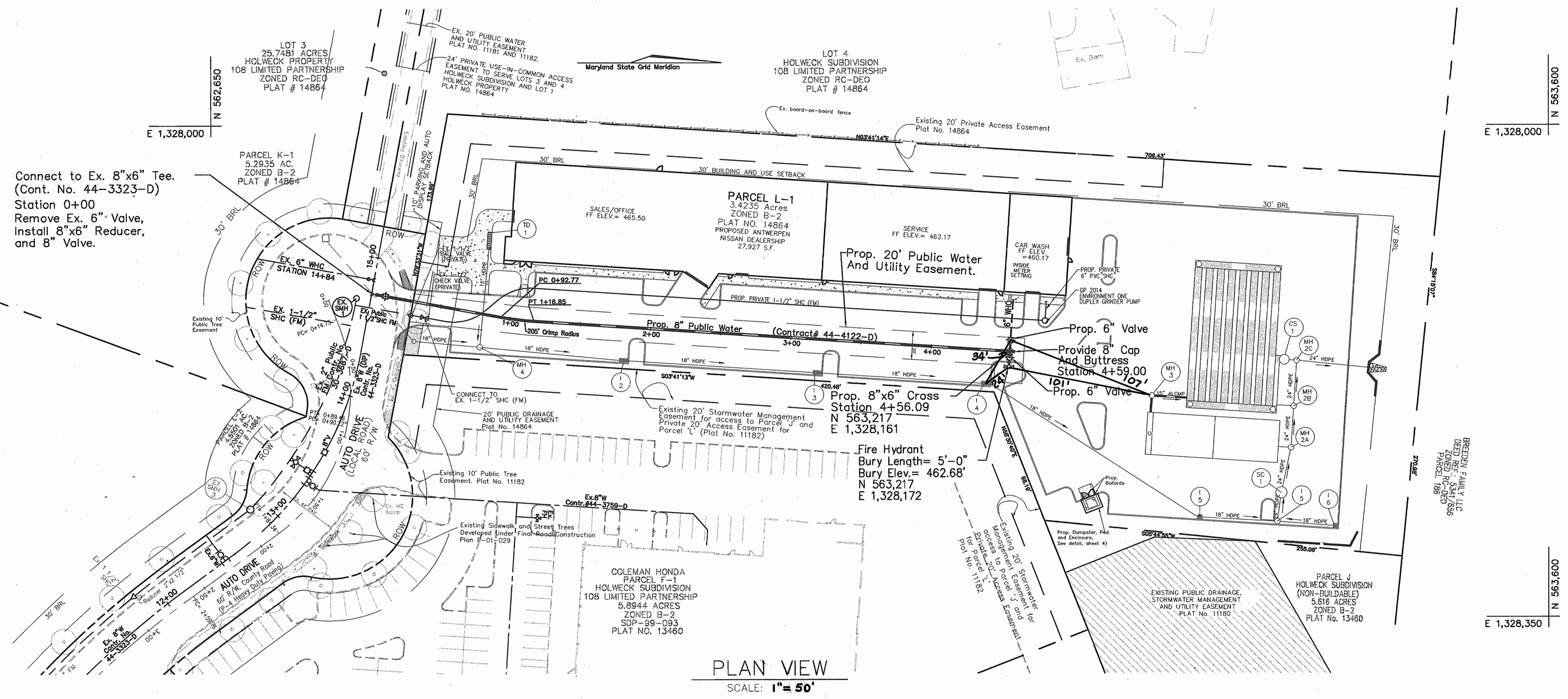
QUANTITIES

NAME OF UTILITY CONTRACTOR : CHESAPEAKE SITE CONTRACTING, INC.				
SURVEY AND DRAFTING DIVISION AS-BUILT DATE : MARCH 12, 2004				
ITEMS	QUANTITIES ESTIMATED	AS-BUILT		
		QUANTITIES	TYPE	MANUFACTURER/SUPPLIER
8" X 6" REDUCER	1 EA.	1 EACH	D.I.P.	TYLER/HUGHES SUPPLY INC.
8" VALVE	1 EA.	1 EACH	D.I.P.	KENNEDY VALVE/HUGHES SUPPLY
8" WATER	459 L.F.	460 L.F.	D.I.P.	US PIPE & FOUNDARY/HUGHES SUPPLY
6" WATER	22 L.F.	22 L.F.	D.I.P.	US PIPE & FOUNDARY/HUGHES SUPPLY
8" X 6" CROSS	1 EA.	1 EACH	D.I.P.	TYLER/HUGHES SUPPLY INC.
6" VALVE	2 EA.	2 EACH	D.I.P.GATE	KENNEDY VALVE/HUGHES SUPPLY
FIRE HYDRANT	1 EA.	1 EACH	KENNEDY	KENNEDY VALVE/HUGHES SUPPLY
8" CAP & BUTTRESS	1 EA.	1 EACH	D.I.P.	TYLER/HUGHES SUPPLY INC.

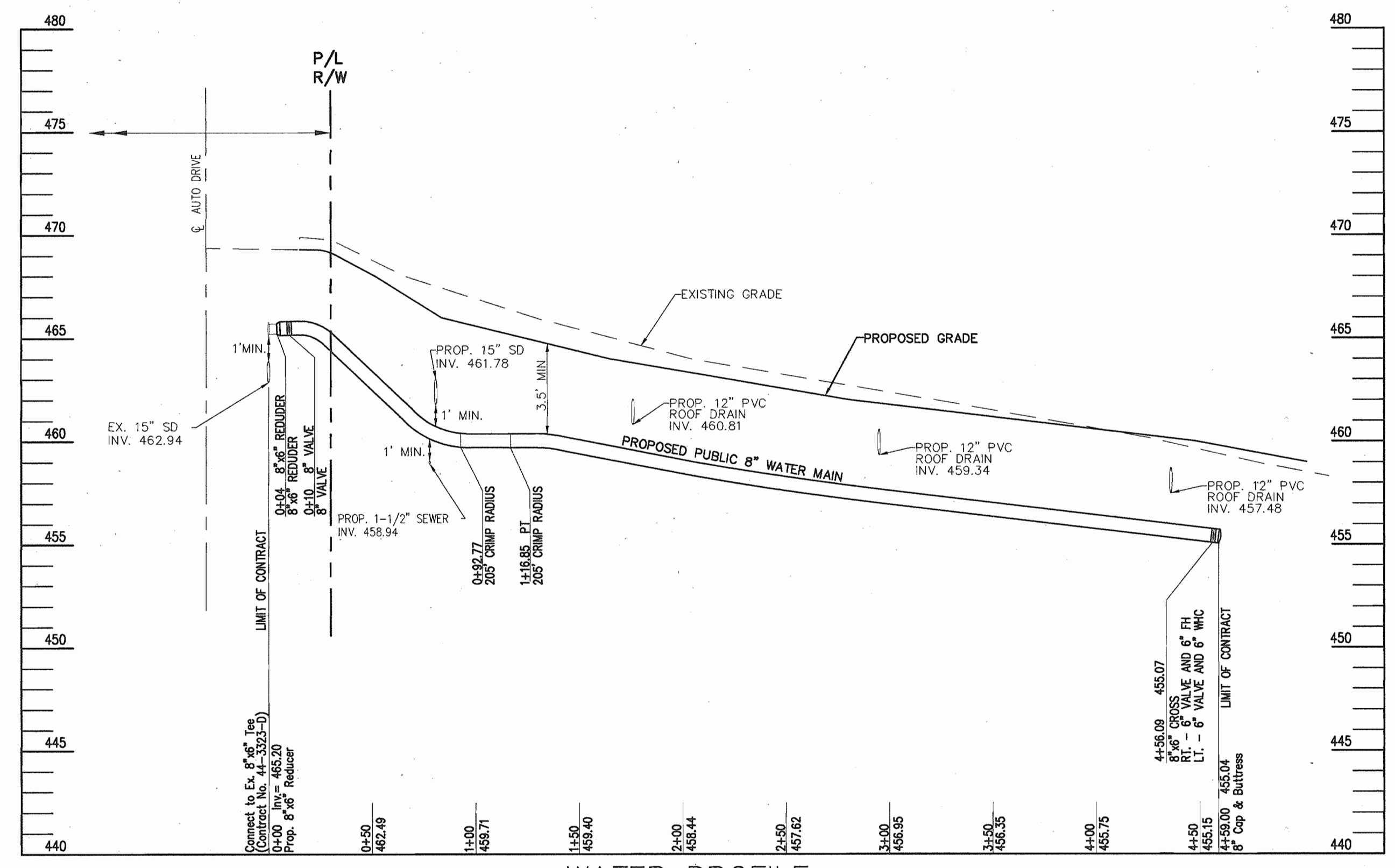


VICINITY MAP

SCALE: 1"=2000'



PLAN VIEW
SCALE: 1" = 50'



WATER PROFILE
SCALE: HOR. 1" = 50'
VERT. 1" = 50'

SEDIMENT CONTROL MEASURES WILL BE IMPLEMENTED IN ACCORDANCE WITH SECTION 219 OF THE SPECIFICATIONS AND WITH SITE DEVELOPMENT PLAN SDP-03-92

THIS DEVELOPMENT IS APPROVED FOR SOIL EROSION AND SEDIMENT CONTROL BY THE HOWARD COUNTY SOIL CONSERVATION DISTRICT.

John R. Roberts
SOIL CONSERVATION DISTRICT

REVIEWED FOR HOWARD COUNTY SOIL CONSERVATION DISTRICT AND MEETS TECHNICAL REQUIREMENTS.

Jim Myler
S.O. SOIL CONSERVATION DISTRICT

AS BUILT
DATE: MARCH 12, 2004

DEPARTMENT OF PUBLIC WORKS
HOWARD COUNTY, MARYLAND

Ruth B...
9-29-03
CHIEF, BUREAU OF UTILITIES

DEPARTMENT OF PLANNING & ZONING
HOWARD COUNTY, MARYLAND

...
9/10/03
CHIEF, DEVELOPMENT ENGINEERING DIVISION

FREDERICK WARD ASSOCIATES, INC.
7125 Riverwood Drive Columbia, Maryland 21046-2354
Phone: 410-290-9550 Fax: 410-720-6226
Bel Air, Maryland Columbia, Maryland Warrenton, Virginia



DES:	JWW
DRN:	JWW
CHK:	RHV
DATE:	AUGUST 2003
BY:	NO.
REVISION:	
DATE:	

FINAL WATER CONSTRUCTION PLAN
PLAN SHEET & PROFILE

ANTWERPEN NISSAN
CONTRACT NO. 44-4122-D

TAX MAP 34, BLOCK 6
5TH ELECTION DISTRICT

PARCEL L-1
HOWARD COUNTY, MARYLAND

SCALE AS SHOWN

SHEET 2 OF 2