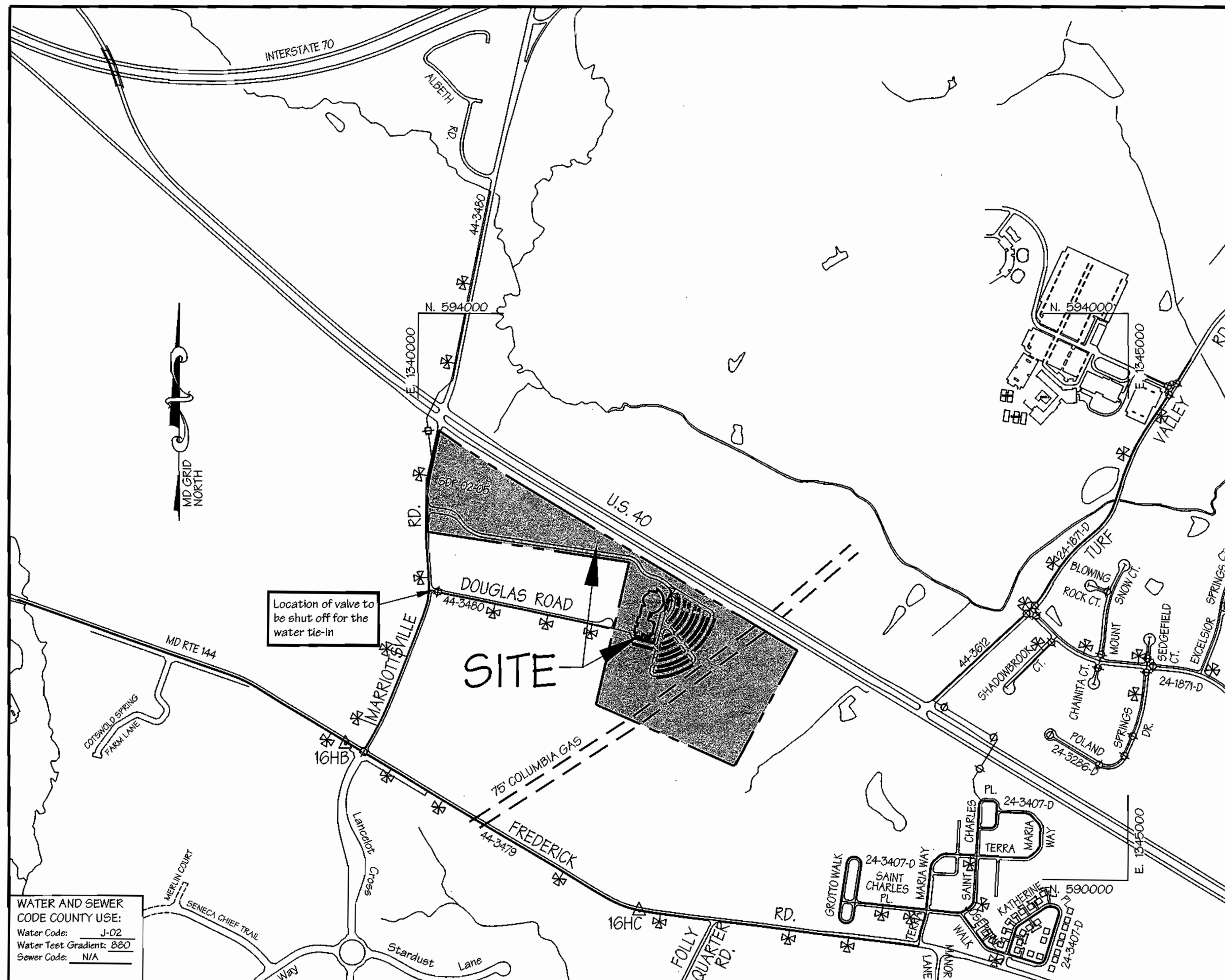


BENCHMARKS

HOWARD COUNTY GEODETIC CONTROL: 16HC
Elevation: 449.451
Station is a standard stamped disc set on top of concrete monument. Located on the southern boundary of Maryland Route 144, 0.1 Mile west of Folly Quarter Road.

HOWARD COUNTY GEODETIC CONTROL: 16HB
Elevation: 540.658
Station is a standard stamped disc set on top of concrete monument. Located 21.9' south of centerline - Maryland Route 144, 147.5' west of Marriotsville Road. Station is flush with surface.



WATER AND SEWER CODE COUNTY USE:
Water Code: J-02
Water Test Gradient: 800
Sewer Code: N/A

Type of Building: Institutional Religious Facility
Number of Lots/Parcels: 1
Number of W.H.C.'S: 1
Number of S.H.C.'S: 0
Drainage Area: Little Patuxent River
Treatment Plant: LPWWTP

VICINITY MAP
Scale: 1"=600'

INDEX OF SHEETS	
SHEET NO.	TITLE
1	TITLE SHEET
2	PLAN SHEET
3	PLAN & PROFILE SHEET

GENERAL NOTES

- PART I
- Approximate location of existing mains are shown. The Contractor shall take all necessary precautions to protect existing mains and services and maintain uninterrupted supply. Any damage incurred shall be repaired immediately to the satisfaction of the Engineer at the Contractor's expense.
 - All horizontal controls are based on Maryland State Coordinates, [North American Datum of 1983 (NAD '83)].
 - All vertical controls are based on U.S.G.S. data.
 - All pipe elevations shown are invert elevations.
 - Clear all utilities by a minimum of 6". Clear all poles by 2'-0" minimum or tunnel as required. The owner has contacted the utility companies and has made arrangements for bracing of poles as shown on the drawings. In the event the Contractor's work requires the bracing of additional poles, any cost incurred by the Owner for bracing of additional poles or damages shall be deducted from money owed the Contractor. The Contractor shall coordinate with the utility companies to schedule the bracing of the poles.
 - For details not shown on the drawings, and for materials and construction methods use Howard County Design Manual, Volume IV, Standard Specifications and Detail for Construction (latest edition). The Contractor shall have a copy of Volume IV on the job.
 - Where test pits have been made on existing utilities, they are noted by the symbol at the location of the test pit. A note or notes containing the results of the test pit or pits is included on the drawings. Existing utilities in the vicinity of the proposed work for which test pits have not been dug shall be located by the Contractor two weeks in advance of construction operations at his own expense.
 - Contractor shall notify the following utility companies or agencies at least five (5) working days before starting work shown on these plans:
 - a. State Highway Administration: 410-531-5533
 - b. BGE (Contractor Services): 410-860-4620
 - c. BGE (Underground Damage Control): 410-291-4607
 - d. Miss Utility: 1-800-257-7777
 - e. Colonial Pipeline Company: 410-549-4120
 - f. Howard County Dept. of Public Works, Bureau of Utilities: 410-313-4900
 - g. Bell Atlantic: 1-800-446-5266
 - Trees and shrubs are to be protected from damage to maximum extent. Trees and shrubs located within the construction strip are not to be removed or damaged by the Contractor.
 - Contractor shall remove trees, stumps and roots along line of excavation. Payment for such removal shall be included in the unit price bid for construction of the main.
 - The contractor shall notify the Bureau of Highways, Howard County, at (410) 313-2450 at least five (5) working days before any open cut of any County road or boring/jacking operation in County roads for laying water/sewer main or house connections. The approval of these drawings will constitute compliance with DPW requirements per Section 18.114(a) of the Howard County Code.

PART II: WATER

- All water mains to be D.I.P. Class 52 unless otherwise noted.
- Tops of all water mains to have a minimum of 3 1/2' cover unless otherwise noted.
- Valves adjacent to the trees shall be strapped to the trees.
- All fittings shall be buttressed or anchored with concrete in accordance with the Standard Details unless otherwise provided for on the drawings.
- Fire hydrants shall be set to the bury line elevations shown on the drawings. All fire hydrants shall be restrained and buttressed with concrete in accordance with the Standard Details. Soil around the fire hydrant shall be compacted in accordance with Section 1000 and 1005 of the Standard Specifications.
- The Contractor shall not operate any water main valves on the existing water system.
- All water house connections shall be for inside meter setting unless otherwise noted on plans or in specifications.
- For sprinkler system for all townhomes or multi-family dwelling units should have a minimum of 1' connection with a 3/4" meter.

WATER CONSTRUCTION PLANS

ST. JOHN THE EVANGELIST BAPTIST CHURCH

3rd Election District - Howard County, Maryland
Contract No. 44-4101-D

QUANTITIES

ITEM	QUANTITIES ESTIMATED	AS BUILT	
		QUANTITIES	MANUFACTURER/SUPPLIER
8" WATER - D.I.P.	812 LF		
8" VALVE	2 EA		
6" CAP & BUTTRESS	1 EA		
6" BEND 1/8"	6 EA		
6" FIRE HYDRANT	2 EA		
8" x 6" F.H.T.	2 EA		
6" VALVE	2 EA		
8" x 6" REDUCER	1 EA		
6" WATER - D.I.P.	1 EA		
NAME OF UTILITY CONTRACTOR:		CHECK BOX: SURVEY & DRAFTING DIVISION AS BUILT DATE:	

REVIEWED FOR HOWARD SOIL CONSERVATION DISTRICT AND MEETS TECHNICAL REQUIREMENTS.
Jim Meyer 5/5/03
NATURAL RESOURCE CONSERVATION SERVICE

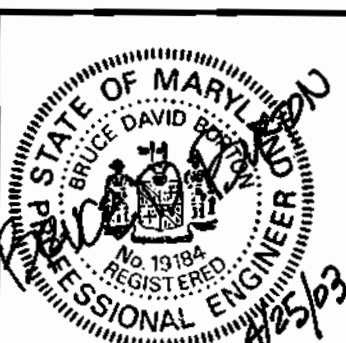
THIS DEVELOPMENT PLAN IS APPROVED FOR SOIL EROSION AND SEDIMENT CONTROL BY THE HOWARD COUNTY SOIL CONSERVATION DISTRICT.
John R. Roberts 5/5/03
HOWARD SOIL CONSERVATION DISTRICT

SEDIMENT CONTROL MEASURES FOR THIS CONTRACT WILL BE IMPLEMENTED IN ACCORDANCE WITH SECTION 219 OF THE STANDARD SPECIFICATION AND THE APPROVED SITE DEVELOPMENT PLAN, SDP-02-05. F-03-96

DEPARTMENT OF PUBLIC WORKS
Ruth Beaman 4-30-03
CHIEF-BUREAU OF UTILITIES DATE

DEPARTMENT OF PLANNING & ZONING
Chadman 5/10/03
CHIEF-DEVELOPMENT ENGINEERING DIVISION DATE

LDE Inc.
Engineers, Surveyors, Planners
9230 Ramsey Road, Suite 106 Columbia, Maryland - 21045
(410)715-1070 - (301)596-3424 - FAX(410)715-9540

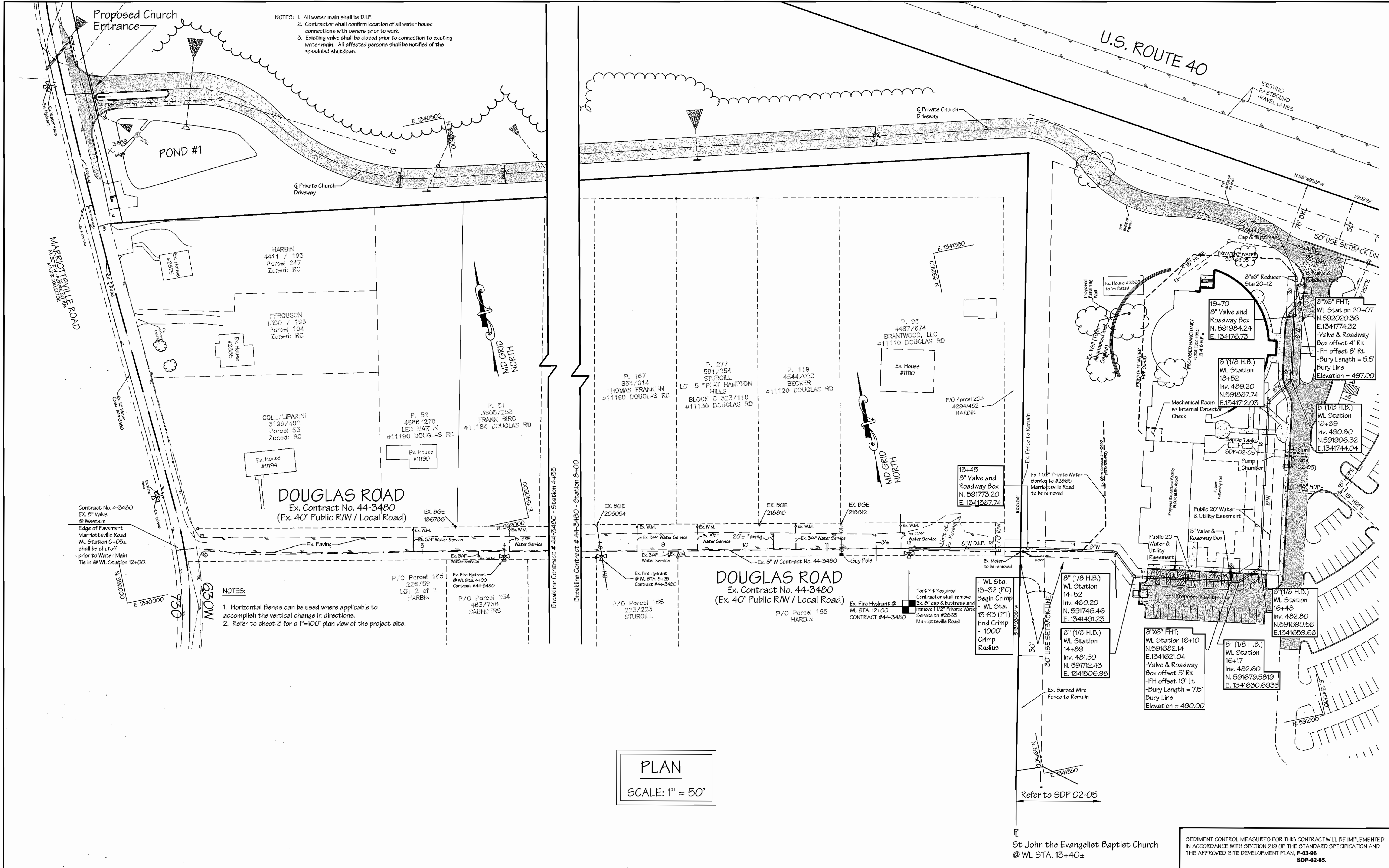


DESIGNED EDS					
DRAWN JLM/JDR					
CHECKED BDB					
DATE 4/2003					
BY NO.		REVISION		DATE	

TITLE SHEET
600 SCALE MAP NO. 16
BLOCK 16

ST. JOHN THE EVANGELIST BAPTIST CHURCH
3rd ELECTION DISTRICT HOWARD COUNTY, MARYLAND
CONTRACT NO. 44-4101-D

SCALE AS SHOWN
SHEET 1 OF 3



NOTES: 1. All water main shall be D.I.P.
 2. Contractor shall confirm location of all water house connections with owners prior to work.
 3. Existing valve shall be closed prior to connection to existing water main. All affected persons shall be notified of the scheduled shutdown.

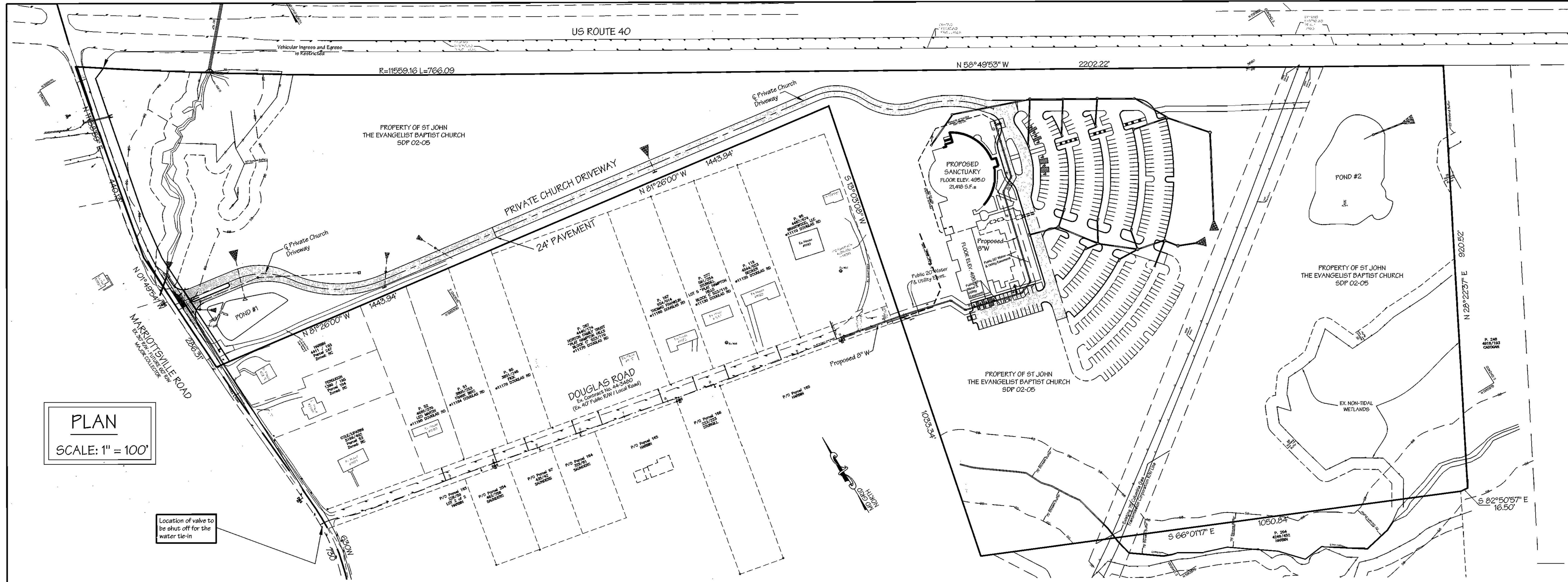
NOTES:
 1. Horizontal Bends can be used where applicable to accomplish the vertical change in directions.
 2. Refer to sheet 3 for a 1"=100' plan view of the project site.

PLAN
 SCALE: 1" = 50'

SEDIMENT CONTROL MEASURES FOR THIS CONTRACT WILL BE IMPLEMENTED IN ACCORDANCE WITH SECTION 219 OF THE STANDARD SPECIFICATION AND THE APPROVED SITE DEVELOPMENT PLAN, F-03-96
 SDP-02-05.

DEPARTMENT OF PUBLIC WORKS <i>Robert Bennett</i> 4-30-03 CHIEF-BUREAU OF UTILITIES DATE	DEPARTMENT OF PLANNING & ZONING <i>Charles Williams</i> CHIEF-DEVELOPMENT ENGINEERING DIVISION DATE	LDE Inc. Engineers, Surveyors, Planners 9250 Ramsey Road, Suite 106 Columbia, Maryland - 21045 (410)715-1070 - (301)596-5424 - FAX(410)715-9540		DESIGNED EDS				PLAN SHEET 600 SCALE MAP NO. 16 BLOCK 16	ST. JOHN THE EVANGELIST BAPTIST CHURCH 3rd ELECTION DISTRICT HOWARD COUNTY, MARYLAND CONTRACT NO. 44-4101-D	SCALE AS SHOWN
				DRAWN JLM/JDR	CHECKED BDB	DATE 4/2003	BY NO.			REVISION

File and Project # 2201 UCHMS/Eng/MS/Ans. PLAN 4/25/03 03 15:42 PM

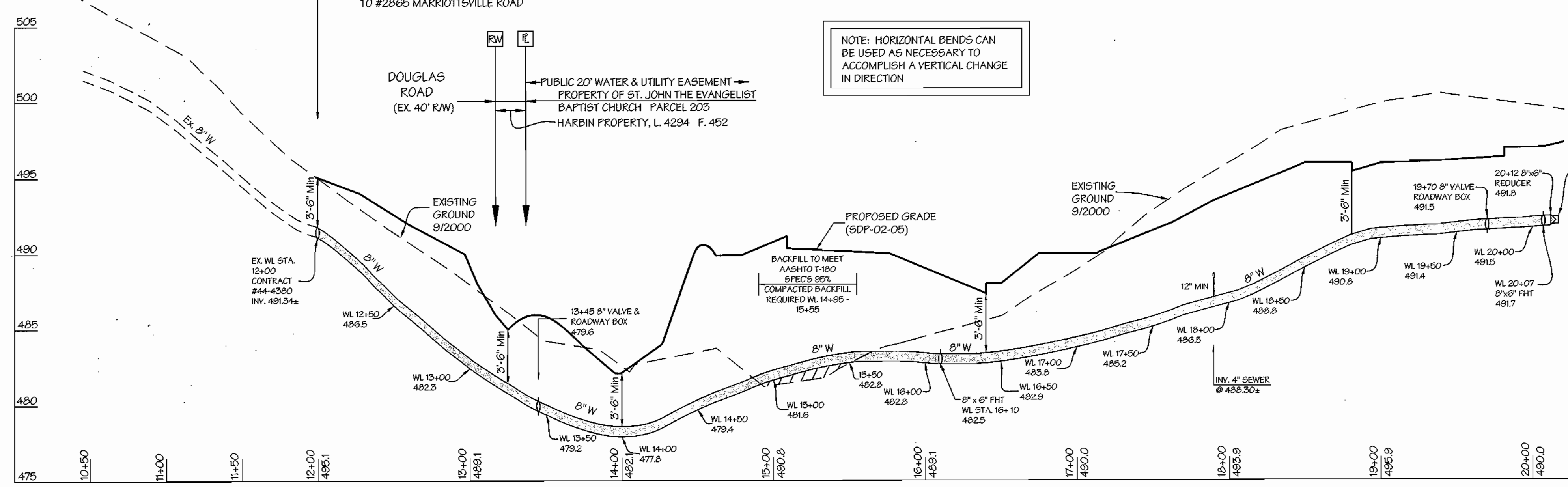


PLAN
SCALE: 1" = 100'

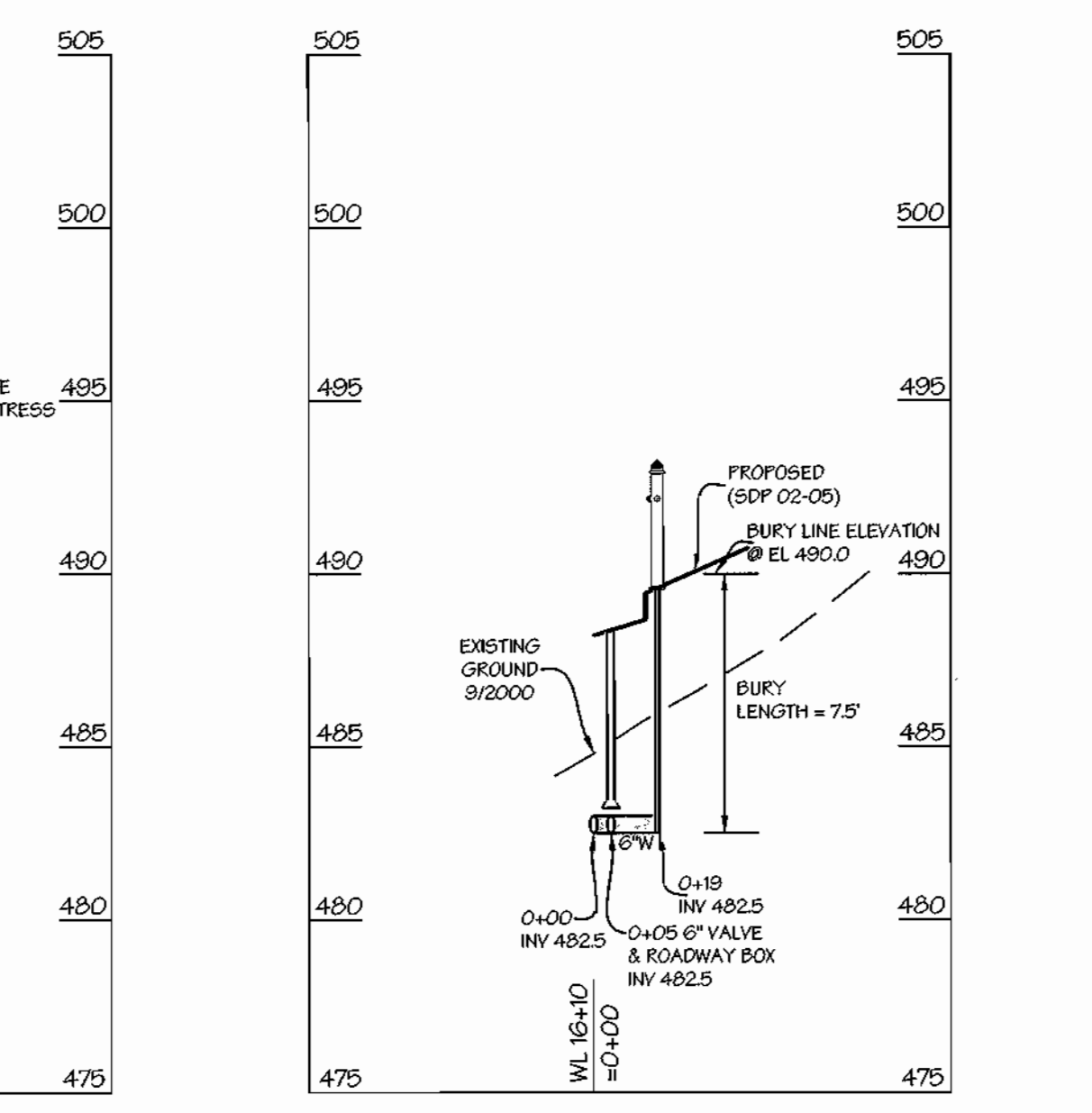
Location of valve to be shut off for the water tie-in

- ALPHA RIDGE WATER SUPPLY**
EX. CONTRACT NO. 44-3480
CAPITAL PROJECT W-8203
SHEET 28 of 31
- 1) TEST PIT FOR EXISTING 8" W-INV. @ 4± CONTRACT NO. 44-3480 - YE. 1996
 - 2) REMOVE EXISTING 8" CAP & BUTTRESS;
 - 3) REMOVE EXISTING 1 1/2" PRIVATE WATER SERVICE TO #2865 MARIOTTVILLE ROAD

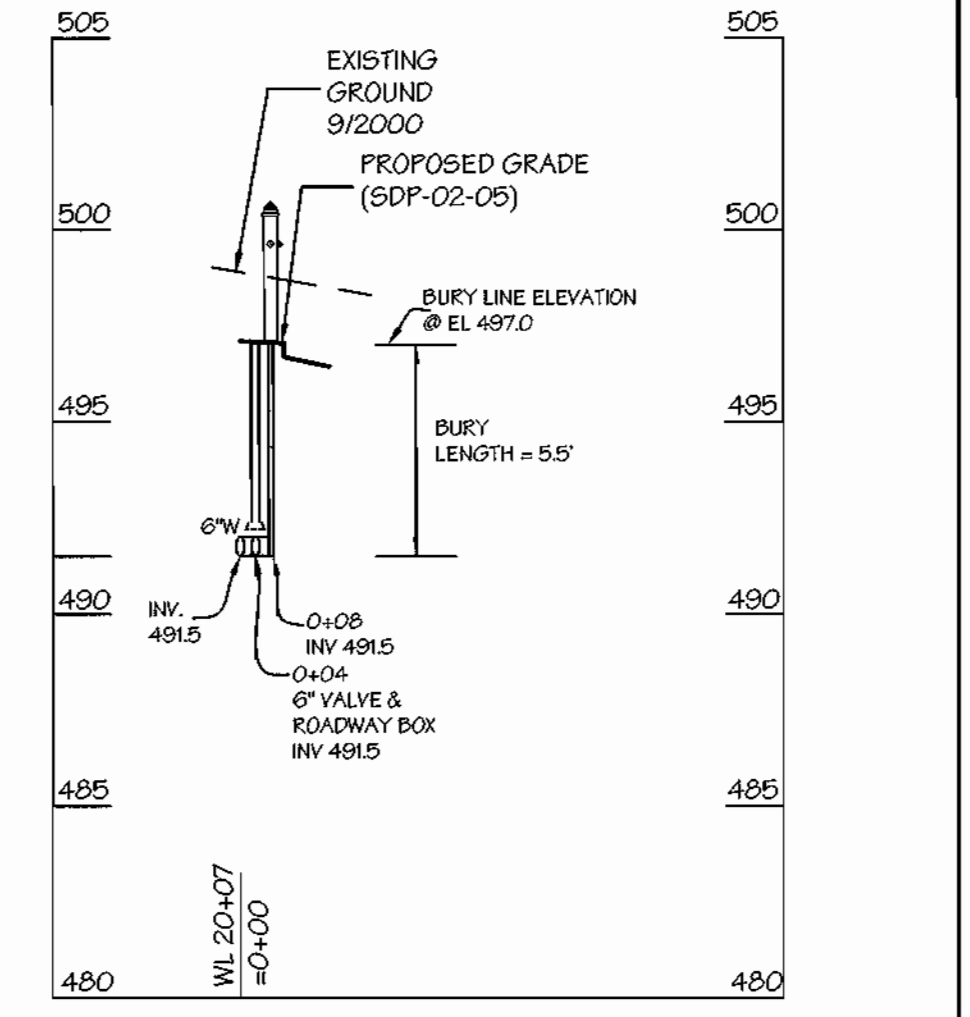
NOTE: HORIZONTAL BENDS CAN BE USED AS NECESSARY TO ACCOMPLISH A VERTICAL CHANGE IN DIRECTION



PROFILE - DOUGLAS ROAD EXTENSION INTO PARCEL 203
SCALE: Vert. 1" = 5'
Horiz. 1" = 50'



PROFILE - FIRE HYDRANT LEAD @ 16+10
SCALE: Vert. 1" = 5'
Horiz. 1" = 50'

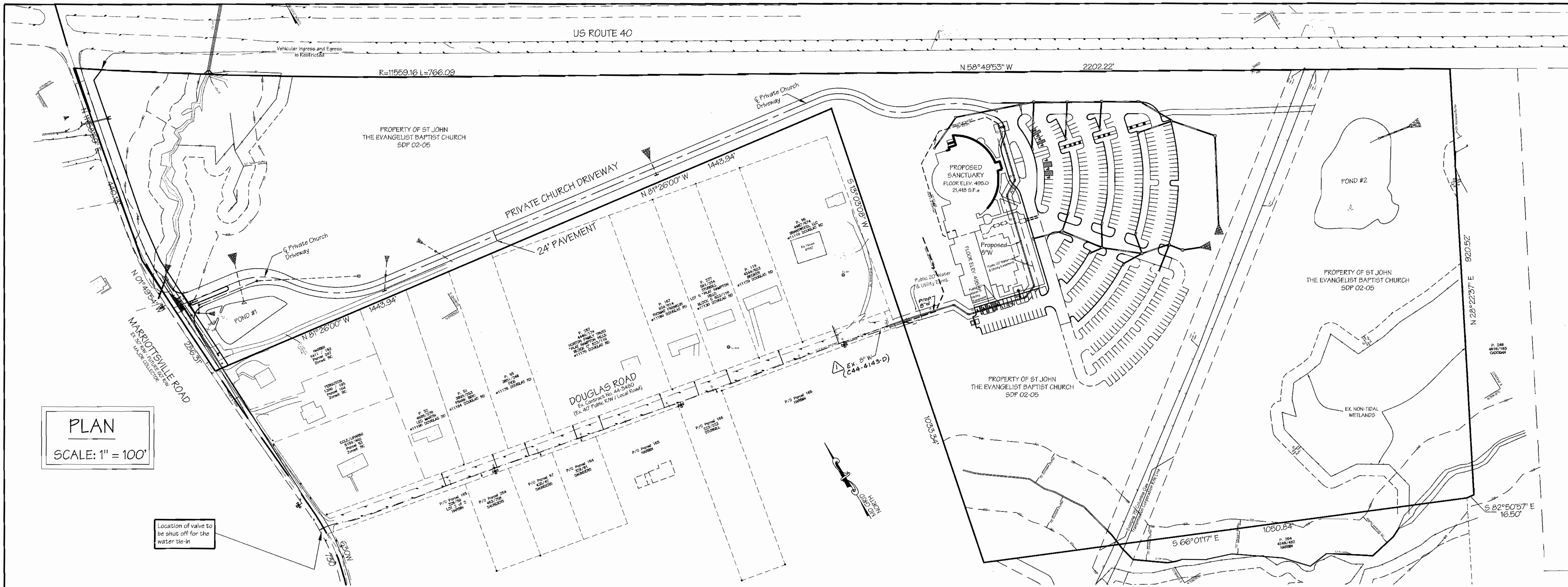


PROFILE - FIRE HYDRANT LEAD @ 20+07
SCALE: Vert. 1" = 5'
Horiz. 1" = 50'

SEDIMENT CONTROL MEASURES FOR THIS CONTRACT WILL BE IMPLEMENTED IN ACCORDANCE WITH SECTION 219 OF THE STANDARD SPECIFICATION AND THE APPROVED SITE DEVELOPMENT PLAN, F 03-96 SDP-02-05.

File and Projects: C:\G:\CHMS\eng\mws\eng_ran & mcneil\442612\0203-14-03-99.PW

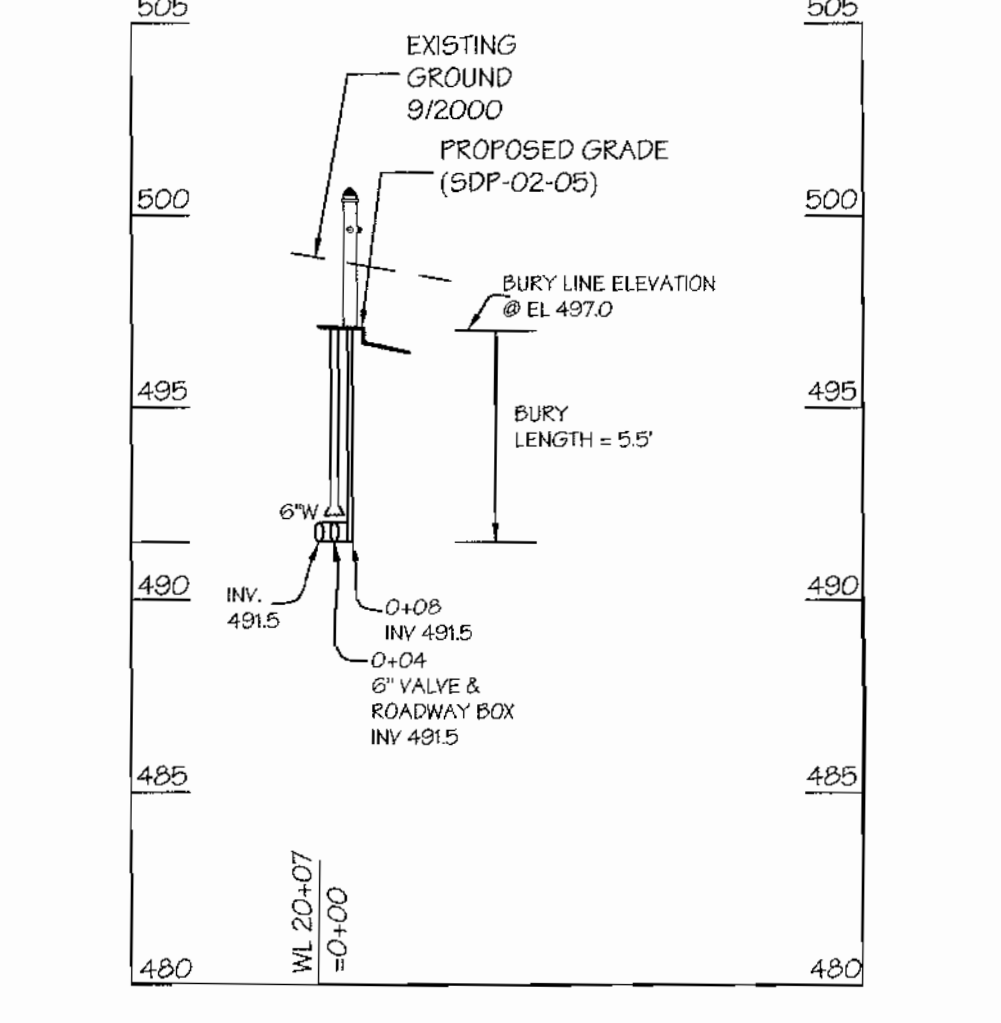
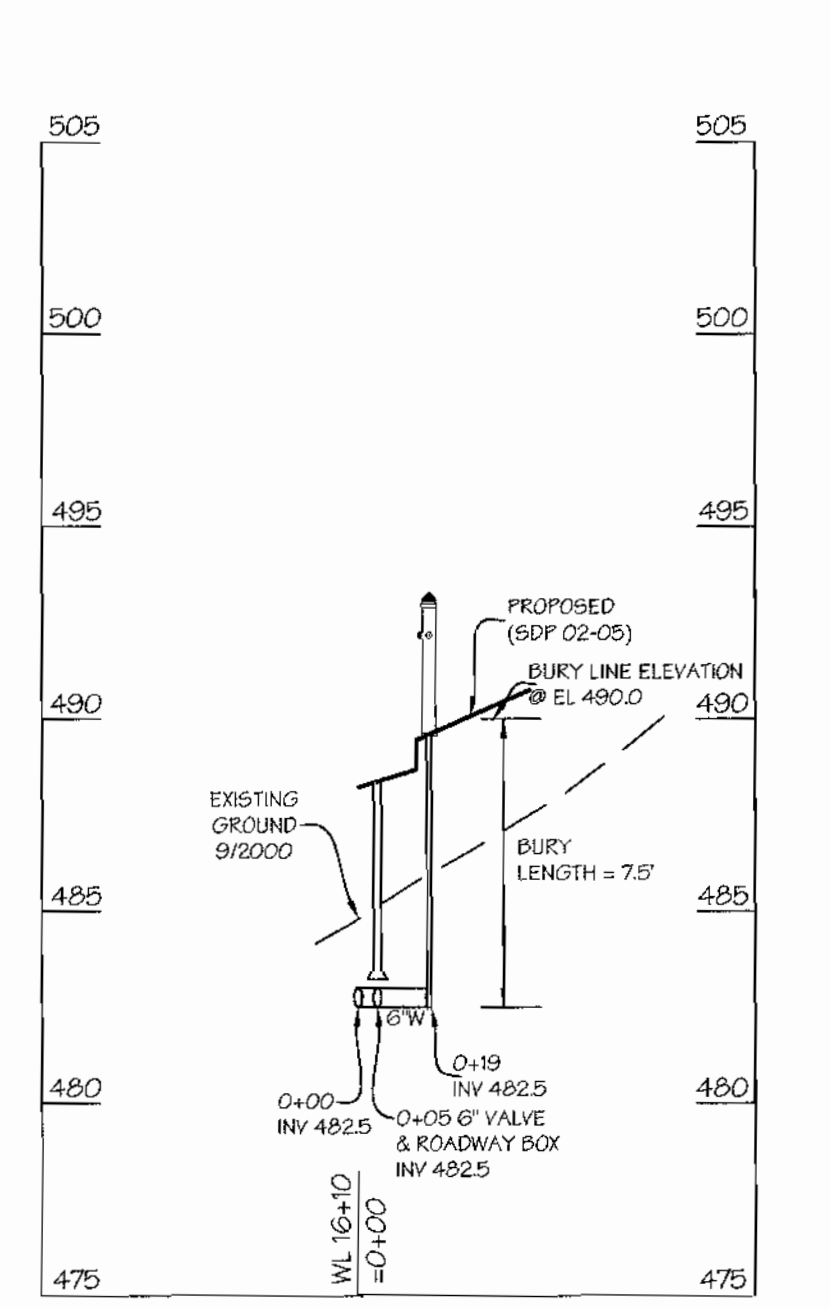
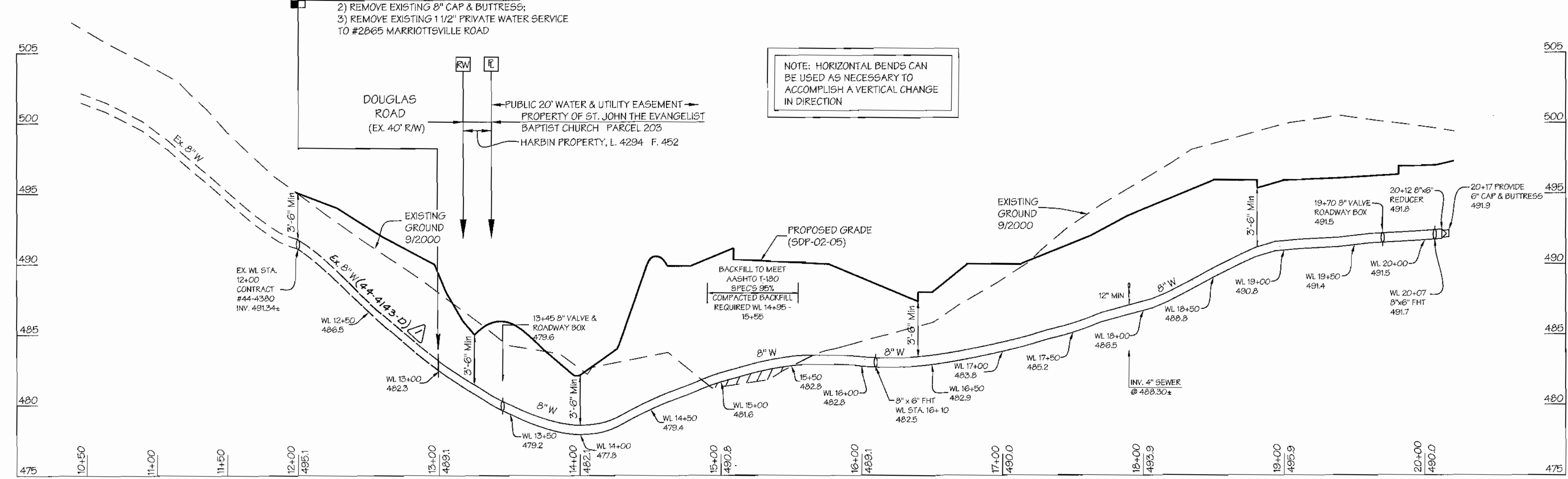
DEPARTMENT OF PUBLIC WORKS <i>Robert Beinger</i> 4-30-03 CHIEF-BUREAU OF UTILITIES		DEPARTMENT OF PLANNING & ZONING <i>Chad Danner</i> 5/12/03 CHIEF-DEVELOPMENT ENGINEERING DIVISION		LDE Inc. Engineers, Surveyors, Planners 9250 Ramsey Road, Suite 106 Columbia, Maryland - 21045 (410)715-1070 • (301)596-3424 • FAX (410)715-9540					DESIGNED: EDS DRAWN: JLM CHECKED: BDB DATE: 4/20/03 BY: NO. _____ REVISION _____ DATE _____		PLAN & PROFILE SHEET 600 SCALE MAP NO. 16 BLOCK 16		ST. JOHN THE EVANGELIST BAPTIST CHURCH 3rd ELECTION DISTRICT HOWARD COUNTY, MARYLAND CONTRACT NO. 44-4101-D		SCALE AS SHOWN SHEET 3 OF 3
--	--	---	--	--	--	--	--	--	---	--	---	--	---	--	--------------------------------



ALPHA RIDGE WATER SUPPLY
EX. CONTRACT NO. 44-3480
CAPITAL PROJECT W-8203
SHEET 2B of 31

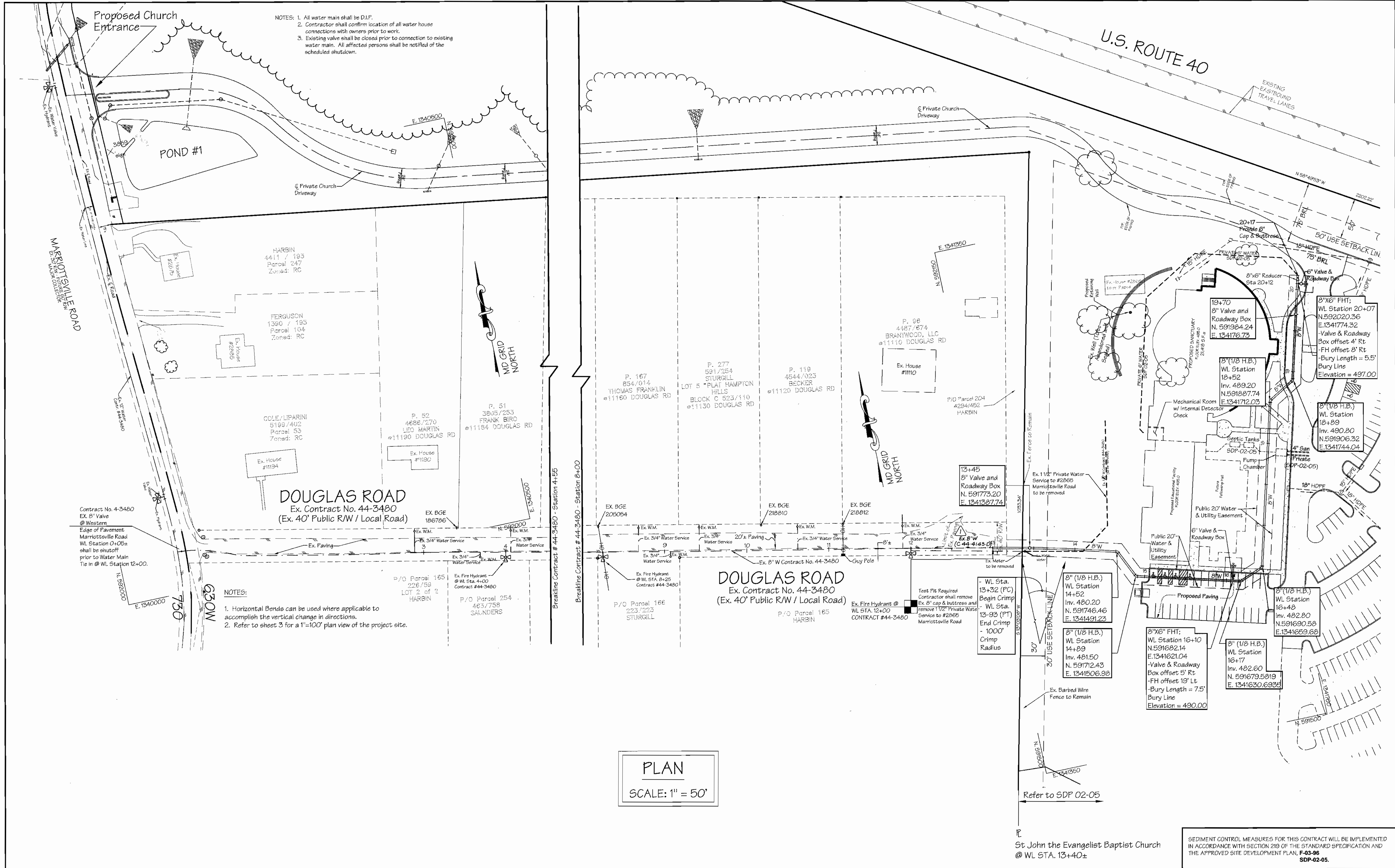
- TEST PIT FOR EXISTING 8"W INV. @ 4±
CONTRACT NO. 44-4143-D-YR. 1996
- REMOVE EXISTING 8" CAP & BUTTRESSES
- REMOVE EXISTING 1 1/2" PRIVATE WATER SERVICE
TO #2865 MARRIOTTVILLE ROAD

NOTE: HORIZONTAL BENDS CAN
BE USED AS NECESSARY TO
ACCOMPLISH A VERTICAL CHANGE
IN DIRECTION



SEDIMENT CONTROL MEASURES FOR THIS CONTRACT WILL BE IMPLEMENTED
IN ACCORDANCE WITH SECTION 219 OF THE STANDARD SPECIFICATION AND
THE APPROVED SITE DEVELOPMENT PLAN, **F 03-96**
SDP-02-05

DEPARTMENT OF PUBLIC WORKS <i>Ruth Bringer</i> CHIEF-BUREAU OF UTILITIES DATE: 4-30-03	DEPARTMENT OF PLANNING & ZONING <i>Alan Danvers</i> CHIEF-DEVELOPMENT ENGINEERING DIVISION DATE: 5/12/03 76	LDE Inc. Engineers, Surveyors, Planners 9290 Ramsey Road, Suite 106 Columbia, Maryland - 21045 (410)715-1070 - (301)596-3424 - FAX (410)715-9540	DESIGNED EDS DRAWN JLM CHECKED BDB DATE 4/2/2003 BY LDE NO. Remove 100 L.F. 8"W Constructed Under 244-4143-D	PLAN & PROFILE SHEET 600 SCALE MAP NO. 16 BLOCK 16 DATE 11/2/04	ST. JOHN THE EVANGELIST BAPTIST CHURCH 3rd ELECTION DISTRICT HOWARD COUNTY, MARYLAND CONTRACT NO. 44-4101-D SCALE AS SHOWN SHEET 3 OF 3
---	---	---	--	--	---



NOTES: 1. All water main shall be D.I.P.
 2. Contractor shall confirm location of all water house connections with owners prior to work.
 3. Existing valve shall be closed prior to connection to existing water main. All affected persons shall be notified of the scheduled shutdown.

NOTES:
 1. Horizontal Bends can be used where applicable to accomplish the vertical change in directions.
 2. Refer to sheet 3 for a 1"=100' plan view of the project site.

PLAN
 SCALE: 1" = 50'

Refer to SDP 02-05
 St. John the Evangelist Baptist Church
 @ WL STA. 13+40±

SEDIMENT CONTROL MEASURES FOR THIS CONTRACT WILL BE IMPLEMENTED IN ACCORDANCE WITH SECTION 215 OF THE STANDARD SPECIFICATION AND THE APPROVED SITE DEVELOPMENT PLAN, F-03-96 SDP-02-05.

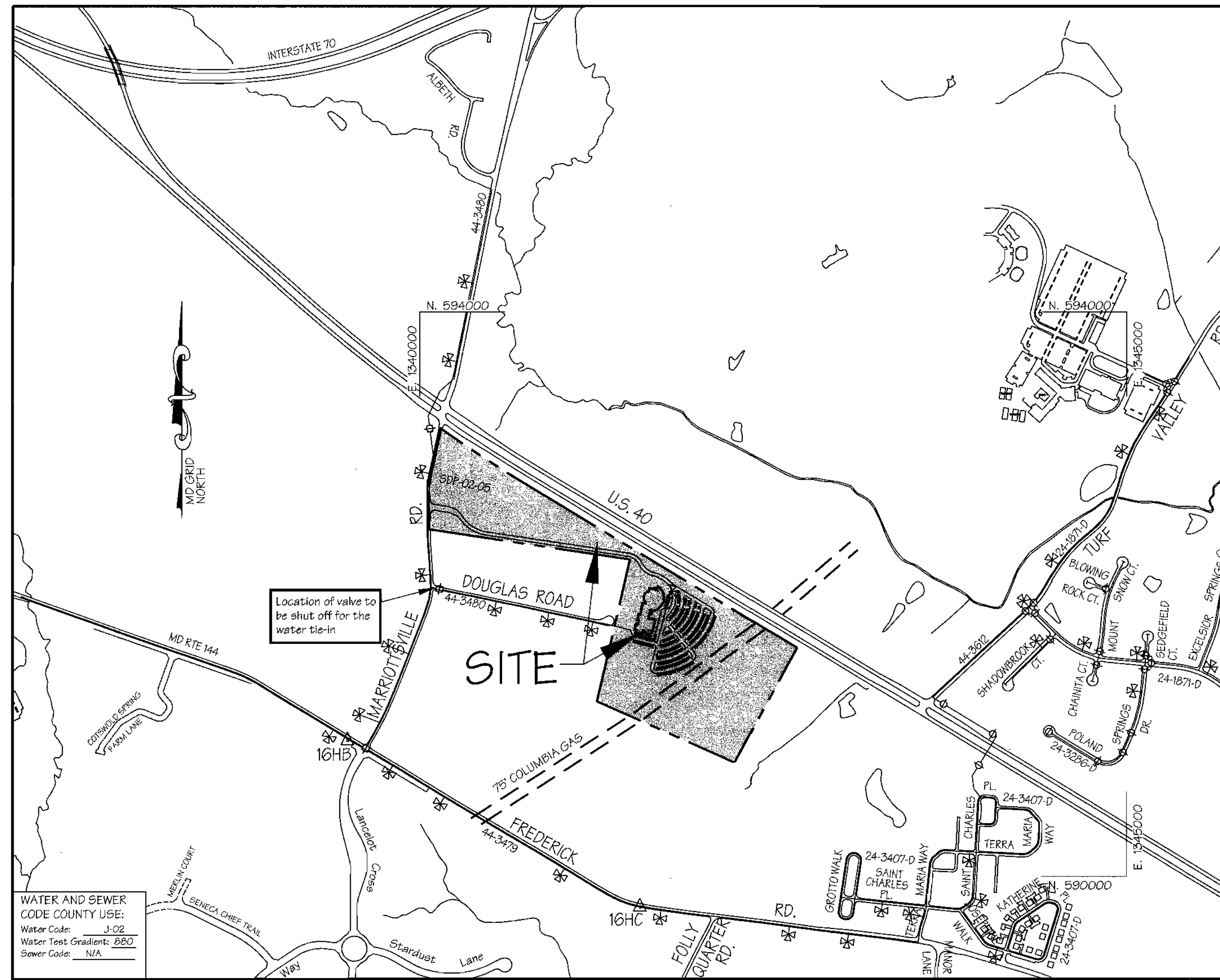
DEPARTMENT OF PUBLIC WORKS <i>Robert Benjamin</i> 4-30-03 CHIEF-BUREAU OF UTILITIES DATE		DEPARTMENT OF PLANNING & ZONING <i>William S. Jones</i> 5/12/03 CHIEF-DEVELOPMENT ENGINEERING DIVISION DATE		LDE Inc. Engineers, Surveyors, Planners 9250 Ramsey Road, Suite 106 Columbia, Maryland - 21045 (410)715-1070 - (301)596-3424 - FAX(410)715-9540				DESIGNED EDS DRAWN JLM/JDR CHECKED BDB DATE 4/2003		REMOVE 100 L.F. 8" W CONSTRUCTED UNDER C44-4143-D DATE 11/2/04		PLAN SHEET 600 SCALE MAP NO. 16 BLOCK 16		ST. JOHN THE EVANGELIST BAPTIST CHURCH 3rd ELECTION DISTRICT HOWARD COUNTY, MARYLAND CONTRACT NO. 44-4101-D		SCALE AS SHOWN SHEET 2 OF 3	
--	--	---	--	---	--	--	--	---	--	---	--	--	--	--	--	--------------------------------	--

File and Project: K25TJ01N50.dwg (W&S-dwg) PL AN - 4/25/03 10:42 PM

BENCHMARKS

HOWARD COUNTY GEODETIC CONTROL: 16HC
Elevation: 449.451
Station is a standard stamped disc set on top of concrete monument. Located on the southern boundary of Maryland Route 144, 0.1 Mile west of Folly Quarter Road.

HOWARD COUNTY GEODETIC CONTROL: 16HB
Elevation: 540.658
Station is a standard stamped disc set on top of concrete monument. Located 21.3' south of centerline - Maryland Route 144, 147.5' west of Marriotsville Road. Station is flush with surface.



WATER AND SEWER CODE COUNTY USE:
Water Code: J-02
Water Test Gradient: 880
Sewer Code: N/A

Type of Building:	Institutional Religious Facility
Number of Lots/Parcels:	1
Number of W.H.C.'S:	1
Number of S.H.C.'S:	0
Drainage Area:	Little Patuxent River
Treatment Plant:	LPWWTP

VICINITY MAP
Scale: 1"=600'

INDEX OF SHEETS	
SHEET NO.	TITLE
1	TITLE SHEET
2	PLAN SHEET
3	PLAN & PROFILE SHEET

GENERAL NOTES

- PART I**
- Approximate location of existing mains are shown. The Contractor shall take all necessary precautions to protect existing mains and services and maintain uninterrupted supply. Any damage incurred shall be repaired immediately to the satisfaction of the Engineer at the Contractor's expense.
 - All horizontal controls are based on Maryland State Coordinates. [North American Datum of 1983 (NAD '83)].
 - All vertical controls are based on U.S.G.S. data.
 - All pipe elevations shown are invert elevations.
 - Clear all utilities by a minimum of 6'. Clear all poles by 2'-0" minimum or tunnel as required. The owner has contacted the utility companies and has made arrangements for bracing of poles as shown on the drawings. In the event the Contractor's work requires the bracing of additional poles, any cost incurred by the Owner for bracing of additional poles or damages shall be deducted from money owed the Contractor. The Contractor shall coordinate with the utility companies to schedule the bracing of the poles.
 - For details not shown on the drawings, and for materials and construction methods use Howard County Design Manual, Volume IV, Standard Specifications and Detail for Construction (latest edition). The Contractor shall have a copy of Volume IV on the job.
 - Where test pits have been made on existing utilities, they are noted by the symbol at the location of the test pit. A note or notes containing the results of the test pit or pits is included on the drawings. Existing utilities in the vicinity of the proposed work for which test pits have not been dug shall be located by the Contractor two weeks in advance of construction operations at his own expense.
 - Contractor shall notify the following utility companies or agencies at least five (5) working days before starting work shown on these plans:
 - a. State Highway Administration: 410-531-5533
 - b. BGE (Contractor Services): 410-850-4620
 - c. BGE (Underground Damage Control): 410-291-4607
 - d. Miss Utility: 1-800-257-7777
 - e. Colonial Pipeline Company: 410-549-4120
 - f. Howard County Dept. of Public Works, Bureau of Utilities: 410-313-4900
 - g. Bell Atlantic: 1-800-446-5266
 - Trees and shrubs are to be protected from damage to maximum extent. Trees and shrubs located within the construction strip are not to be removed or damaged by the Contractor.
 - Contractor shall remove trees, stumps and roots along line of excavation. Payment for such removal shall be included in the unit price bid for construction of the main.
 - The contractor shall notify the Bureau of Highways, Howard County, at (410) 313-2450 at least five (5) working days before any open cut of any County road or boring/jacking operation in County roads for laying water/sewer mains or house connections. The approval of these drawings will constitute compliance with DPW requirements per Section 18.114(a) of the Howard County Code.

PART II: WATER

- All water mains to be D.I.P. Class 52 unless otherwise noted.
- Tops of all water mains to have a minimum of 3 1/2' cover unless otherwise noted.
- Valves adjacent to the trees shall be strapped to the trees.
- All fittings shall be buttressed or anchored with concrete in accordance with the Standard Details unless otherwise provided for on the drawings.
- Fire hydrants shall be set to the bury line elevations shown on the drawings. All fire hydrants shall be restrained and buttressed with concrete in accordance with the Standard Details. Soil around the fire hydrant shall be compacted in accordance with Section 1000 and 1005 of the Standard Specifications.
- The Contractor shall not operate any water main valves on the existing water system.
- All water house connections shall be for inside meter setting unless otherwise noted on plans or in specifications.
- For sprinkler system for all townhomes or multi-family dwelling units should have a minimum of 1' connection with a 3/4" meter.

WATER CONSTRUCTION PLANS

ST. JOHN THE EVANGELIST BAPTIST CHURCH

3rd Election District - Howard County, Maryland
Contract No. 44-4101-D

QUANTITIES			
AS BUILT			
ITEM	QUANTITIES ESTIMATED	QUANTITIES	MANUFACTURER/SUPPLIER
8" WATER - D.I.P.	712 LF Δ		
8" VALVE	2 EA		
6" CAP & BUTTRESS	1 EA		
8" BEND 1/8"	6 EA		
6" FIRE HYDRANT	2 EA		
8" x 6" - F.H.T.	2 EA		
6" VALVE	2 EA		
8" x 6" REDUCER	1 EA		
6" WATER - D.I.P.	1 EA		
NAME OF UTILITY CONTRACTOR:		CHECK BOX: SURVEY & DRAFTING DIVISION AS BUILT DATE:	

REVIEWED FOR HOWARD SOIL CONSERVATION DISTRICT AND METS TECHNICAL REQUIREMENTS.
Jim Mayes 5/15/03
NATURAL RESOURCES CONSERVATION SERVICE

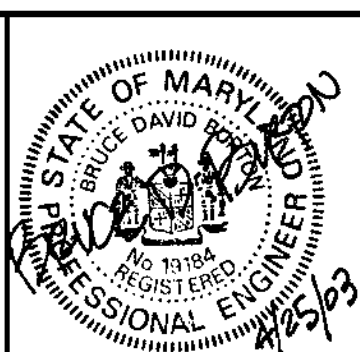
THIS DEVELOPMENT PLAN IS APPROVED FOR SOIL EROSION AND SEDIMENT CONTROL BY THE HOWARD COUNTY SOIL CONSERVATION DISTRICT.
John R. Roberts 5/15/03
HOWARD SOIL CONSERVATION DISTRICT

SEDIMENT CONTROL MEASURES FOR THIS CONTRACT WILL BE IMPLEMENTED IN ACCORDANCE WITH SECTION 219 OF THE STANDARD SPECIFICATION AND THE APPROVED SITE DEVELOPMENT PLAN, SDP-02-05, F-03-86

DEPARTMENT OF PUBLIC WORKS
Ruth Beaman 4-30-03
CHIEF BUREAU OF UTILITIES

DEPARTMENT OF PLANNING & ZONING
Chadman Stalos
CHIEF DEVELOPMENT ENGINEERING DIVISION

LDE Inc.
Engineers, Surveyors, Planners
9250 Rumsey Road, Suite 106 Columbia, Maryland - 21045
(410) 715-1070 - (301) 596-3424 - FAX (410) 715-9540



DESIGNED	EDS		
DRAWN	JLM/JDR		
CHECKED	BDB		
DATE	4/20/03		
BY	LDE	Remove 100 L.F. 8" W Constructed Under C44-4143-D	11/2/04
NO.		REVISION	DATE

TITLE SHEET
600 SCALE MAP NO. 16
BLOCK 16

ST. JOHN THE EVANGELIST BAPTIST CHURCH
3rd ELECTION DISTRICT HOWARD COUNTY, MARYLAND
CONTRACT NO. 44-4101-D

SCALE AS SHOWN
SHEET 1 OF 3