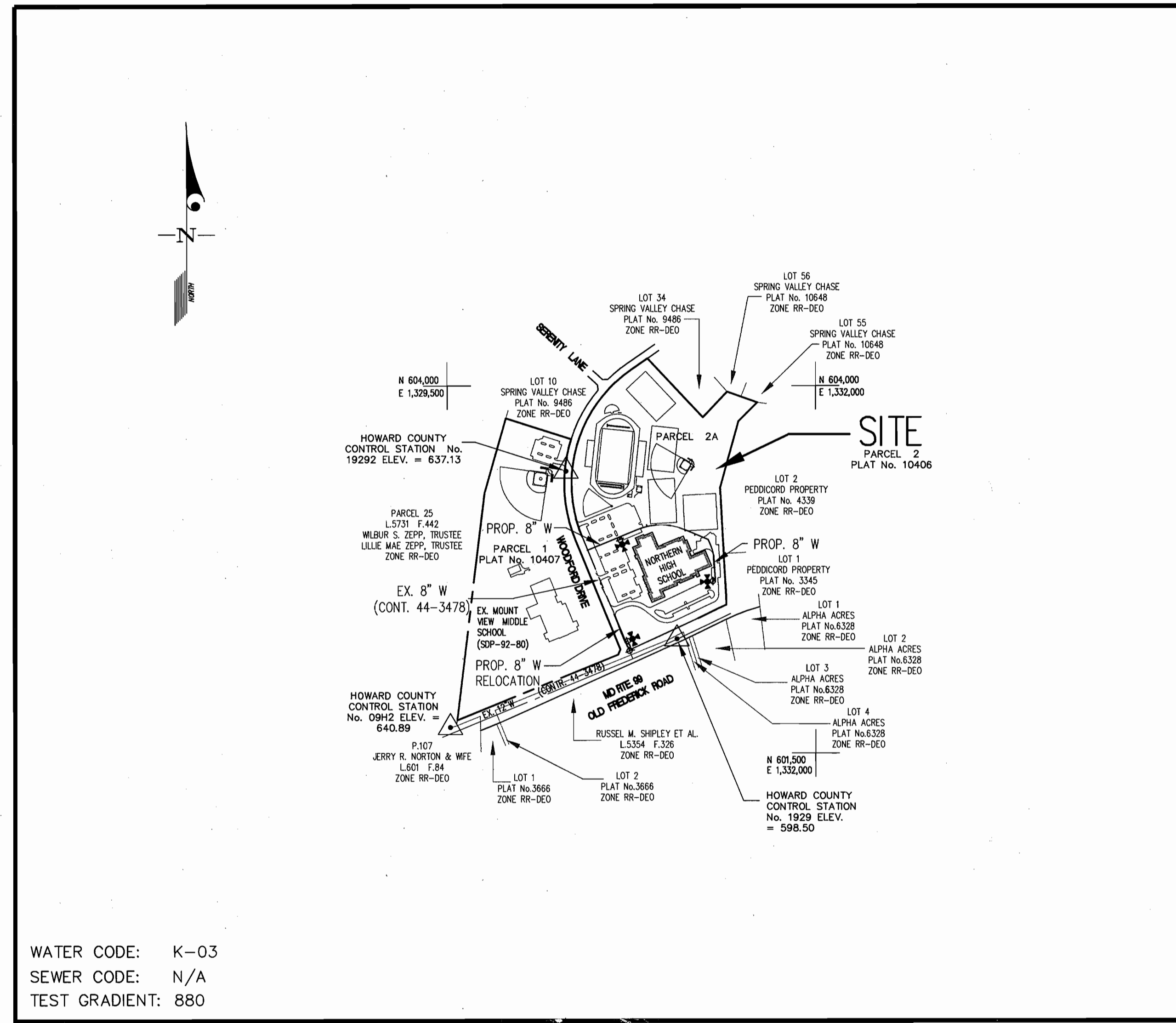


QUANTITIES				
ITEMS	QUANTITIES ESTIMATED	AS-BUILT		
		QUANTITIES	TYPE	MANUFACTURER/SUPPLIER
6" WATER	48 L.F.			
8" WATER	1,450 L.F.			
8" x 8" T.S.&V.	1			
8" x 8" T.	1 EA.			
8" 1/8 H.B.	5 EA.			
6" VALVE (FH)	4			
8" PLUG	2			
8" x 6" F.H.T.	4			
FIRE HYDRANT	3(NEW) & 1(RELOCATED)			
4" CAP	1			
1" WHC	10 L.F.			
4" WHC	10 L.F.			
NAME OF UTILITY CONTRACTOR:				
SURVEY AND DRAFTING DIV.		CHECKBOX: AS-BUILT DATE:		

TYPE OF BUILDING	INSTITUTIONAL (PUBLIC SCHOOL)
NUMBER OF UNITS	2 BUILDINGS WITH WHC'S
NUMBER OF S.H.C.'s	N/A - SEPTIC
NUMBER OF W.H.C.'s	3 (1-8", 1-3" and 1-1")
DRAINAGE AREA	LITTLE PATUXENT
TREATMENT PLANT	N/A - SEPTIC



WATER CODE: K-03
 SEWER CODE: N/A
 TEST GRADIENT: 880

VICINITY MAP
 SCALE: 1"=600'

GENERAL NOTES

- PART I**
- APPROXIMATE LOCATION OF EXISTING MAINS ARE SHOWN. THE CONTRACTOR SHALL TAKE ALL NECESSARY PRECAUTIONS TO PROTECT EXISTING MAINS AND SERVICES AND MAINTAIN UNINTERRUPTED SERVICE. ANY DAMAGE INCURRED SHALL BE REPAIRED IMMEDIATELY TO THE SATISFACTION OF THE ENGINEER AT THE CONTRACTOR'S EXPENSE.
 - ALL HORIZONTAL CONTROLS ARE BASED ON MARYLAND STATE COORDINATES, NAD 83/91 (NORTH AMERICAN DATUM).
 - ALL VERTICAL CONTROLS ARE BASED ON NAVD 88.
 - ALL PIPE ELEVATIONS SHOWN ARE INVERT ELEVATIONS UNLESS OTHERWISE NOTED ON THE PLANS.
 - CLEAR ALL UTILITIES BY A MINIMUM OF 12". CLEAR ALL POLES BY 5-0" MINIMUM OR TUNNEL AS REQUIRED UNLESS OTHERWISE NOTED. THE OWNER HAS CONTACTED THE UTILITY COMPANIES AND HAS MADE ARRANGEMENTS FOR BRACING OF POLES AS SHOWN ON THE DRAWINGS. IN THE EVENT THE CONTRACTOR'S WORK REQUIRES THE BRACING OF ADDITIONAL POLES, ANY COST INCURRED BY THE OWNER FOR BRACING OF ADDITIONAL POLES OR DAMAGES SHALL BE DEDUCTED FROM MONIES OWED THE CONTRACTOR. THE CONTRACTOR SHALL COORDINATE WITH THE UTILITY COMPANIES TO SCHEDULE THE BRACING OF THE POLES.
 - FOR DETAILS NOT SHOWN ON THE DRAWINGS, AND FOR MATERIALS AND CONSTRUCTION METHODS USE HOWARD COUNTY DESIGN MANUAL, VOLUME IV, STANDARD SPECIFICATIONS AND DETAIL FOR CONSTRUCTION (LATEST EDITION). THE CONTRACTOR SHALL HAVE A COPY OF VOLUME IV ON THE JOB.
 - WHERE TEST PITS HAVE BEEN MADE ON EXISTING UTILITIES, THEY ARE NOTED BY THE SYMBOL AT THE LOCATION OF THE TEST PIT. A NOTE OR NOTES CONTAINING THE RESULTS OF THE TEST PIT OR PITS IS INCLUDED ON THE DRAWINGS. EXISTING UTILITIES IN THE VICINITY OF THE PROPOSED WORK FOR WHICH TEST PITS HAVE NOT BEEN DUG SHALL BE LOCATED BY THE CONTRACTOR TWO WEEKS IN ADVANCE OF CONSTRUCTION OPERATIONS AT HIS OWN EXPENSE.
 - CONTRACTOR SHALL NOTIFY THE FOLLOWING UTILITY COMPANIES OR AGENCIES AT LEAST (5) WORKING DAYS BEFORE STARTING WORK SHOWN ON THESE PLANS:

AT&T	1-800-252-1133
BGE (CONTRACTOR SERVICES)	410-850-4620
BGE (UNDER GROUND DAMAGE CONTROL)	410-787-9068
HOWARD CO. DPW, BUREAU OF UTILITIES	410-313-4900
COLONIAL PIPELINE CO.	410-795-1390
MISS UTILITY	1-800-257-7777
STATE HIGHWAY ADMINISTRATION	410-531-5533
VERIZON	1-800-743-0033/410-224-9210
 - TREES AND SHRUBS ARE TO BE PROTECTED FROM DAMAGE TO MAXIMUM EXTENT. TREES AND SHRUBS LOCATED WITHIN THE CONSTRUCTION STRIP ARE NOT TO BE REMOVED OR DAMAGED BY THE CONTRACTOR.
 - CONTRACTOR SHALL REMOVE TREES, STUMPS AND ROOTS ALONG LINE OF EXCAVATION. PAYMENT FOR SUCH REMOVAL SHALL BE INCLUDED IN THE UNIT PRICE BID FOR CONSTRUCTION OF THE MAIN.
 - THE CONTRACTOR SHALL NOTIFY THE BUREAU OF HIGHWAYS, HOWARD COUNTY, AT (410) 313-7450 AT LEAST FIVE (5) WORKING DAYS BEFORE OPEN CUTTING OR BORING/JACKING OF ANY COUNTY ROAD FOR LAYING WATER/SEWER MAINS OR HOUSE CONNECTIONS. THE APPROVAL OF THESE DRAWINGS WILL CONSTITUTE COMPLIANCE WITH DPW REQUIREMENTS PER SECTION 18.114(A) OF THE HOWARD COUNTY CODE.
- PART II - WATER**
- ALL WATER MAINS TO BE D.I.P. CLASS 52 UNLESS OTHERWISE NOTED.
 - TOPS OF ALL WATER MAINS TO HAVE A MINIMUM OF 3-6" COVER UNLESS OTHERWISE NOTED.
 - VALVES ADJACENT TO TEES SHALL BE STRAPPED TO TEES.
 - ALL FITTINGS SHALL BE BUTTRESSED OR ANCHORED WITH CONCRETE IN ACCORDANCE WITH THE STANDARD DETAILS UNLESS OTHERWISE PROVIDED FOR ON THE DRAWINGS.
 - FIRE HYDRANTS SHALL BE SET TO THE BURY LINE ELEVATIONS SHOWN ON THE DRAWINGS. ALL FIRE HYDRANTS SHALL BE INSTALLED IN ACCORDANCE WITH THE STANDARD DETAILS. SOIL AROUND THE FIRE HYDRANT SHALL BE COMPACTED IN ACCORDANCE WITH SECTION 1000 AND 1005 OF THE STANDARD SPECIFICATIONS.
 - THE CONTRACTOR SHALL NOT OPERATE ANY WATER MAIN VALVES ON THE EXISTING WATER SYSTEM.
 - ALL WATER HOUSE CONNECTIONS SHALL BE FOR INSIDE METER SETTING UNLESS OTHERWISE NOTED ON PLANS OR IN SPECIFICATIONS.
 - FOR SPRINKLER SYSTEM FOR ALL TOWNHOMES OR MULTI-FAMILY DWELLING UNITS SHOULD HAVE A MINIMUM OF 1" CONNECTION WITH A 3/4" METER.
- PART III - SEWER**
- PUBLIC SEWER IS NOT APPLICABLE TO THIS PROJECT SINCE IT IS SERVED BY A PRIVATE SEPTIC SYSTEM PER SDP-03-33.

SEDIMENT CONTROL MEASURES WILL BE IMPLEMENTED IN ACCORDANCE WITH SECTION 219 OF THE SPECIFICATIONS & WITH DRAWINGS SDP-03-33.

REVIEWED FOR HOWARD SOIL CONSERVATION DISTRICT AND MEETS TECHNICAL REQUIREMENT.

Jim Meyer 8/13/03
 SIGNATURE DATE
 U.S.D.A. NATURAL RESOURCES CONSERVATION SERVICE

THIS DEVELOPMENT PLAN IS APPROVED FOR SOIL EROSION AND SEDIMENT CONTROL BY THE HOWARD SOIL CONSERVATION DISTRICT.

APPROVED:
John R. Robertson 8/13/03
 HOWARD S.C.D. DATE

CONTRACT No. 44-4066-D
 NORTHERN HIGH SCHOOL
 HOWARD COUNTY, MARYLAND
 DEPARTMENT OF PUBLIC WORKS

DEPARTMENT OF PUBLIC WORKS
 HOWARD COUNTY, MARYLAND

Ruth Benjamin 8-8-03
 CHIEF, BUREAU OF UTILITIES DATE

DEPARTMENT OF PLANNING AND ZONING
 HOWARD COUNTY, MARYLAND

John D. ... 8/13/03
 CHIEF, DEVELOPMENT ENGINEERING DIVISION DATE

GLW GUTSCHICK LITTLE & WEBER, P.A.
 CIVIL ENGINEERS, LAND SURVEYORS, LAND PLANNERS, LANDSCAPE ARCHITECTS
 3909 NATIONAL DRIVE - SUITE 250 - BURTONSVILLE OFFICE PARK
 BURTONSVILLE, MARYLAND 20866
 TEL: 301-421-4024 BALT: 410-880-1820 DC/VA: 301-989-2524 FAX: 301-421-4186



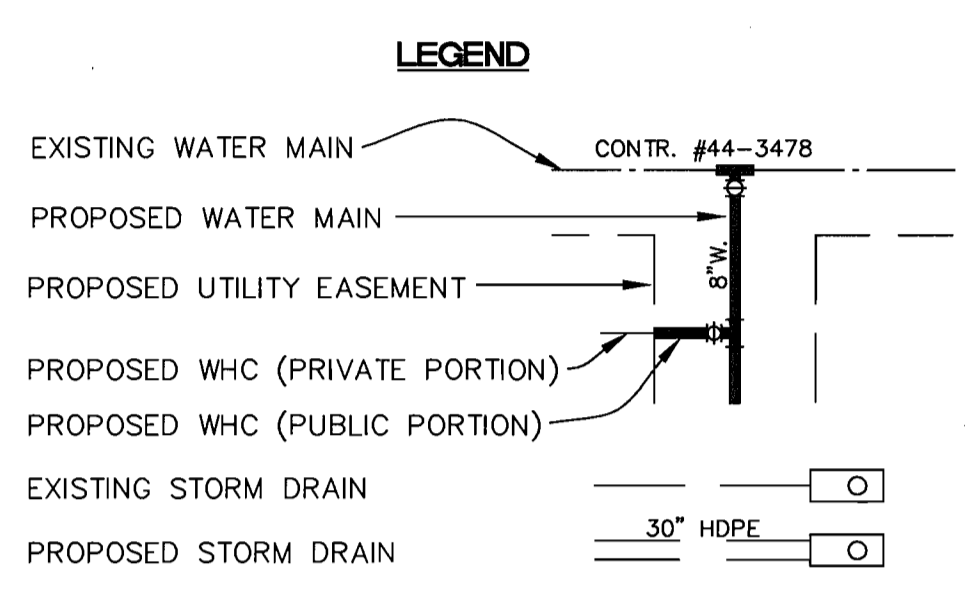
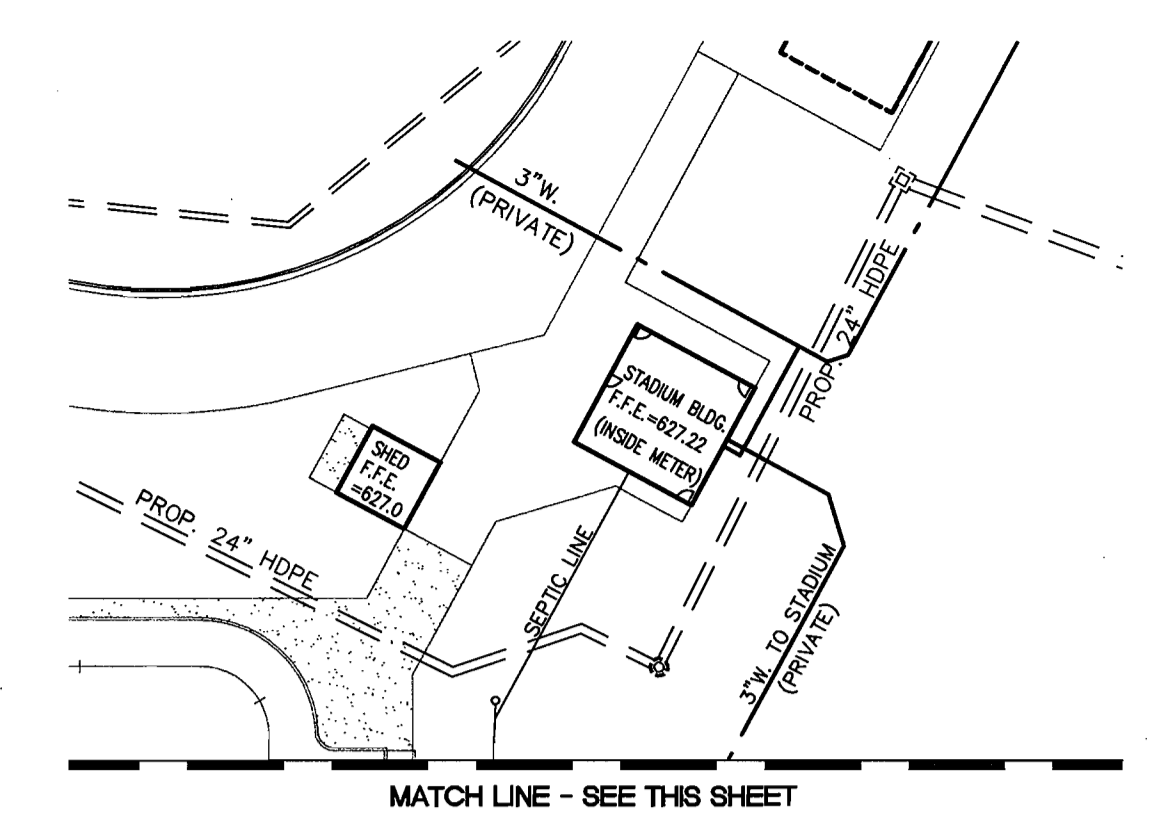
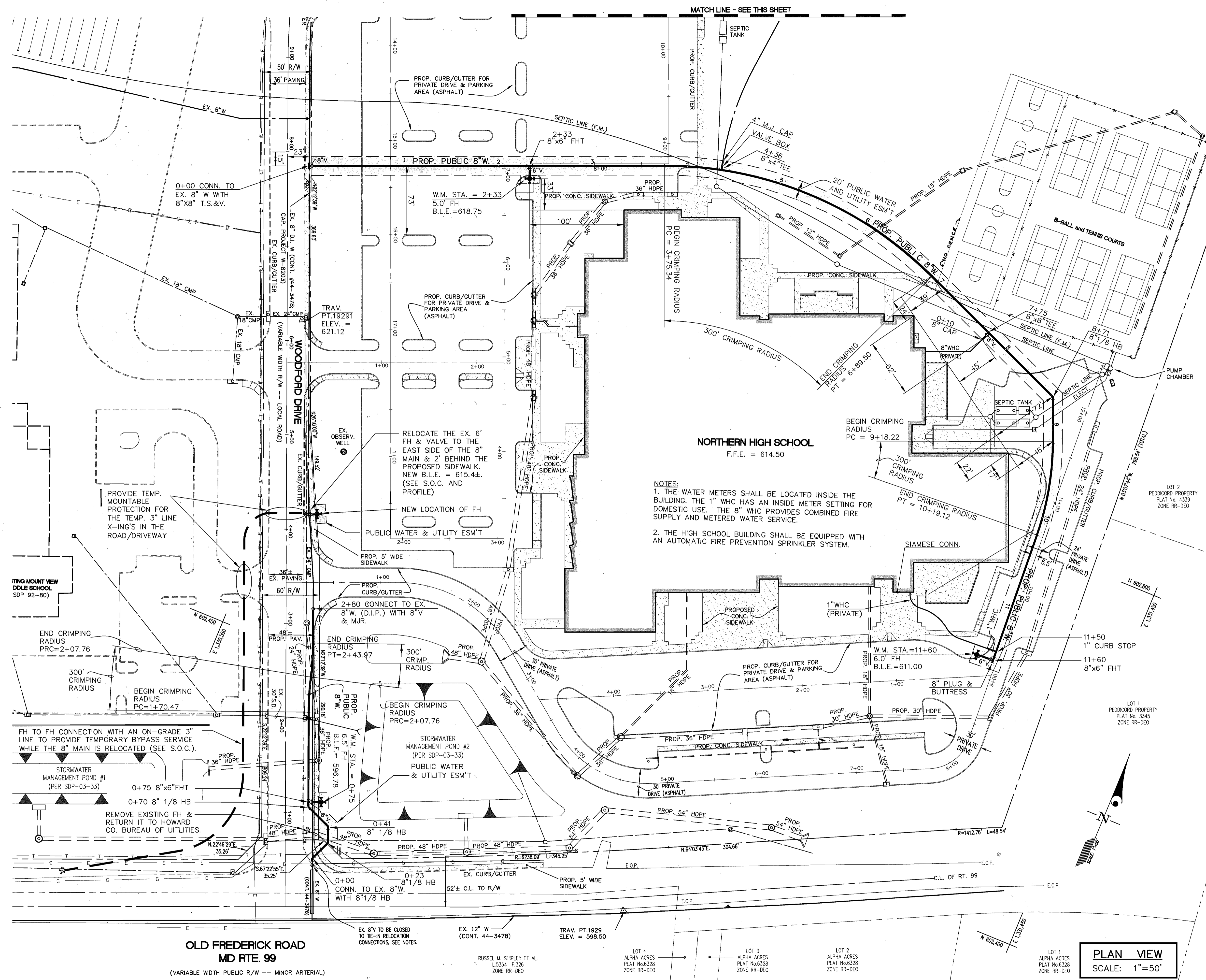
DES: BB/MBT					
DRN: BB/KLP					
CHK: MBT/CXG					
DATE: 28-JUL-03	BY: NO	REVISION	DATE		

COVER SHEET
 SCALE: AS SHOWN

600' SCALE MAP NO. 10 BLOCK NO. 19

NORTHERN HIGH SCHOOL
 HOWARD COUNTY PUBLIC SCHOOL SYSTEM
 Plat Nos. 10406 & 10407
 ELECTION DISTRICT NO. 3
 CONTRACT No. 44-4066-D

SCALE AS SHOWN
 SHEET 1 OF 3



STAKE OUT DIMENSIONS FOR WOODFORD DRIVE 8' W AND FH RELOCATION

WATER LINE STATION/FITTING	STATION - WOODFORD DRIVE -	OFFSET
0+00, 8" 1/8-HB	0+51.10	28.55' R
0+23, 8" 1/8-HB	0+67.53	44.99' R
0+41, 8" 1/8-HB	0+85.11	44.99' R
0+70, 8" 1/8-HB	1+05.87	24.25' R
1+75, 8" 1/8" FHT	1+11	24.25' R
1+75, 6" VALVE	1+11	33.17' R (CENTERED IN SIDEWALK)
1+75, FH	1+11	37.67' R (2 FT. BEHIND SIDEWALK)
1+70.48, PC	2+06.18	24.25' R
2+07.76, PRC	2+43.36	26.45' R
2+43.98, PT	2+79.50	28.65' R
2+80, 6" VALVE CONNECTION	3+15.73	28.65' R
4+43.0, EX. 8" 1/8" FHT	4+15	EX. PER CONTR. #44-3478
4+43.0, 6" VALVE	4+15	28.0' R (CENTERED IN SIDEWALK)
4+43.0, FH	4+15	32.50' R (2 FT. BEHIND SIDEWALK)

*STATION LOCATION PER CONTRACT #44-3478 (CAPITAL PROJECT W-803)

- SEQUENCE OF CONSTRUCTION:**
- THE FOLLOWING ITEMS ARE FOR THE RELOCATION OF A PORTION OF THE (CONTRACT #44-3478) 8" WATER MAIN (WM) AND THE FIRE HYDRANT IN THE VICINITY OF STATION 4+15 ON WOODFORD DRIVE. COORDINATE THE CONSTRUCTION OF THE WATER MAIN ON THE HIGH SCHOOL PARCEL WITH THE SDP-03-33 CONSTRUCTION WORK.
- CONTRACTOR SHALL NOTIFY ALL WATER CUSTOMERS ON WOODFORD DRIVE OF THE IMPENDING TEMPORARY SHUTDOWN AT LEAST FIVE (5) WORKING DAYS PRIOR TO THE WATER MAIN SHUTDOWN. CONTRACTOR SHALL COORDINATE THE SHUTDOWN WITH THE HOWARD COUNTY PUBLIC SCHOOL SYSTEM SO THAT IT IS AT THE LEAST DISRUPTIVE TIME FOR MOUNT VIEW MIDDLE SCHOOL AND OTHER WATER CUSTOMERS ON WOODFORD DRIVE.
 - HAND DIG (OR EXCAVATE WITH CAUTION) DOWN TO THE 8" WATER MAIN (WM) IN THE VICINITY OF WM STATION 2+80 IN ORDER TO INSTALL THE NEW 8" VALVE PLUS TWO (2) LENGTHS OF D.I.P. PRECEDING THE NEW VALVE.
 - CLOSE THE VALVE NEAR WM STATION 0+00 IN ORDER TO INSTALL THE 8" VALVE (IN CLOSED POSITION) AND D.I.P.'S IN THE VICINITY OF WM STATION 2+80 (S.O.C. #2). THE NEW VALVE & ASSOCIATED LENGTHS OF D.I.P.'S MUST BE COMPLETED WITHIN SIX (6) HOURS.
 - HOOK UP THE TEMPORARY BYPASS WATER SERVICE BETWEEN THE EXISTING FH SOUTH OF SIMM POND #1 AND THE FH IN THE VICINITY OF STATION 4+15 (WOODFORD RD C.L.). THIS SEQUENCE CAN BE PERFORMED SIMULTANEOUSLY WITH S.O.C. 2&3 BUT DO NOT OPEN THE FH UNTIL THE NEW 8" VALVE INSTALLATION (S.O.C. #3) HAS BEEN COMPLETED.
 - COMPLETE THE REMAINDER OF THE 8" WM RELOCATION WITHIN TWO (2) CONSECUTIVE WORKING DAYS. COORDINATE THE PARTIAL INSTALLATION OF THE OTHER UTILITY CROSSINGS AS NECESSARY (SEE ALSO SDP-03-33). NOTE: SO THAT THE 8" WM RELOCATION CAN BE COMPLETED WITHIN THE SHORTEST POSSIBLE TIME PERIOD, THE CONTRACTOR MAY INSTALL ANY PORTION OF THE NEW 8" WM RELOCATION THAT IS NOT NEAR THE EXISTING 8" WM IN ADVANCE OF S.O.C. #3. ANY PORTION OF THE ABANDONED 8" WM THAT IS NOT REMOVED SHALL BE FILLED WITH A FLOWABLE FILL MATERIAL (SUCH AS LOW SLUMP CONCRETE).
 - ONCE THE 8" WM HAS BEEN RELOCATED, DISMANTLE THE TEMPORARY BYPASS WATER SERVICE, CLOSE THE ASSOCIATED FH'S AND OPEN THE VALVES NEAR WM STATION 0+00 AND AT 2+80.
 - TO MINIMIZE THE WM SHUTDOWN FREQUENCY, THE FH RELOCATION AT WOODFORD DRIVE STATION 4+15 CAN BE PERFORMED SIMULTANEOUSLY WITH INSTALLATION OF THE NEW 8" VALVE AT WM STATION 2+80. COMPLETE THE FOLLOWING WITHIN SIX (6) HOURS FOR THE FH RELOCATION:
 - HAND DIG (OR EXCAVATE WITH CAUTION) DOWN TO THE FH AND ITS CONNECTION TO THE WM.
 - CLOSE THE 8" VALVE NEAR WM STATION 0+00.
 - DISASSEMBLE THE EXISTING FH AND ITS ASSOCIATED 6" VALVE FROM THE TEE CONNECTION, THEN SET THEM ASIDE.
 - UNBOLT THE EXISTING 8x6 TEE FROM THE WM.
 - ROTATE THE 8x6 TEE (ALONG THE WM CENTER LINE AXIS) SO THE 6" OPENING FACES EAST AND LEVEL. REPLACE AND TIGHTEN THE BOLTS.
 - REATTACHED THE 6" VALVE, BOX AND FH WITH NEW 6" D.I.P. TO THEIR NEW POSITION IN ACCORDANCE WITH HOWARD CO. DETAIL W-111 AND THESE DRAWINGS.
 - OPEN THE 8" VALVE (ITEM 'B' ABOVE).

PLAN VIEW
SCALE: 1"=50'

GLW FILE #00177

DEPARTMENT OF PUBLIC WORKS
HOWARD COUNTY, MARYLAND
8-9-03
DATE

DEPARTMENT OF PLANNING AND ZONING
HOWARD COUNTY, MARYLAND
DATE

GLWGUTSCHICK LITTLE & WEBER, P.A.
CIVIL ENGINEERS, LAND SURVEYORS, LAND PLANNERS, LANDSCAPE ARCHITECTS
3909 NATIONAL DRIVE - SUITE 250 - BURTONSVILLE OFFICE PARK
BURTONSVILLE, MARYLAND 20866
TEL: 301-421-4024 BAL: 410-880-1820 DC/VA: 301-989-2524 FAX: 301-421-4186

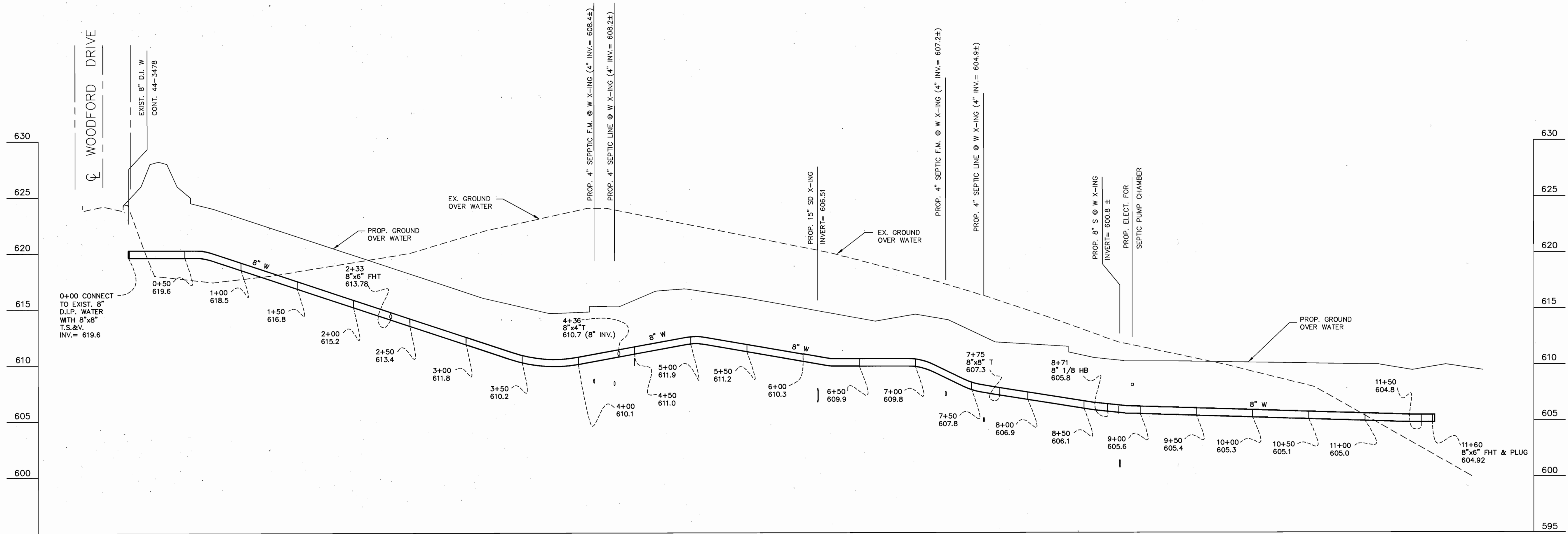


DES: BB/MBT	BY NO	REVISION	DATE
DRN: BB/KLP			
CHK: MBT/CXG			
DATE: 28-JUL-03			

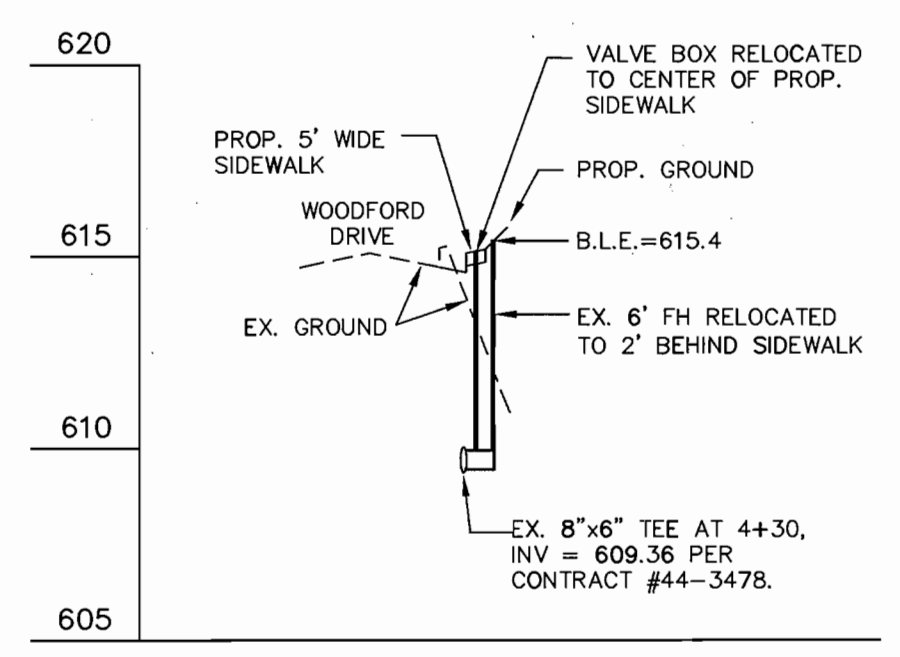
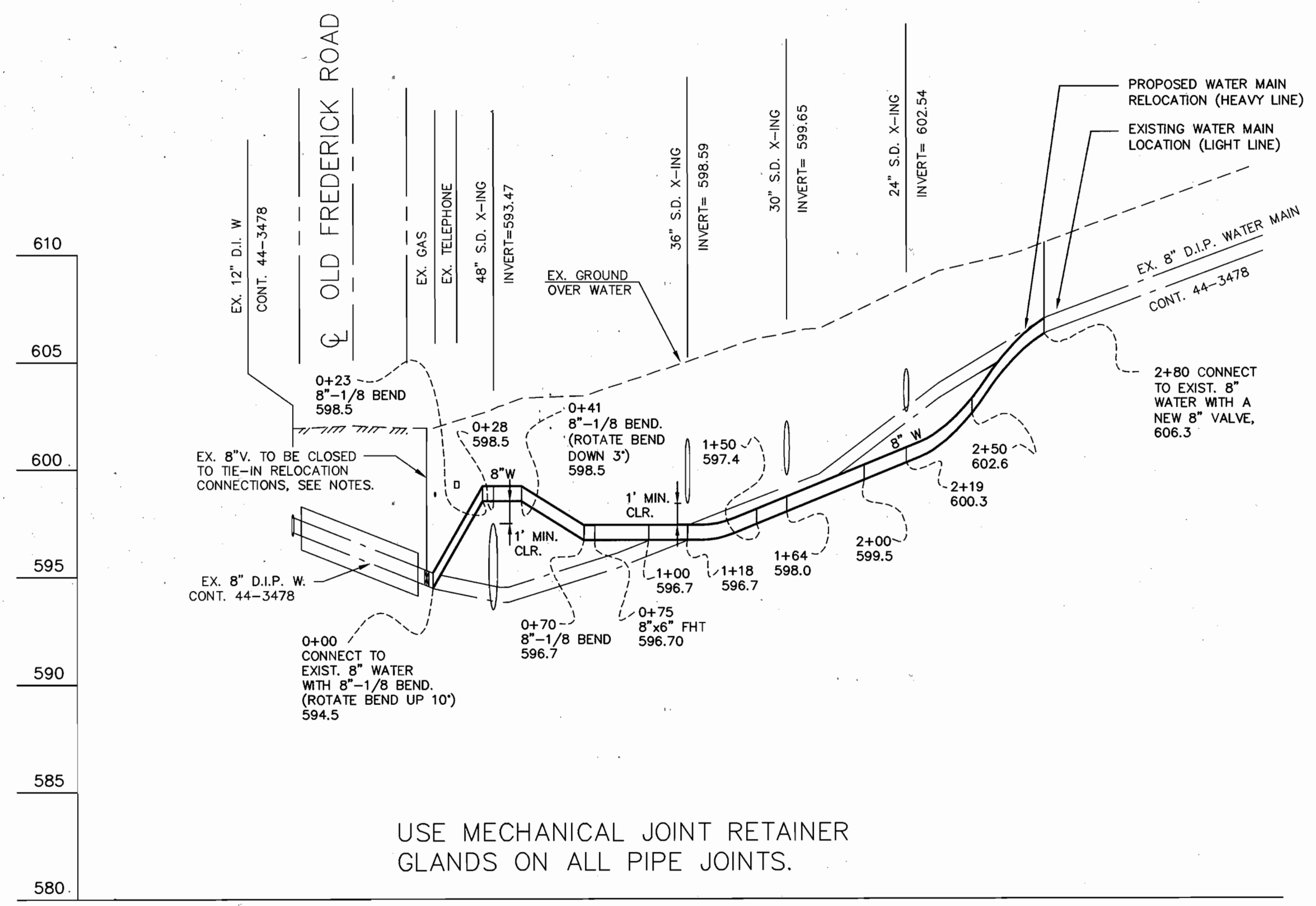
WATER EXTENSION PLAN
600' SCALE MAP NO. 10 BLOCK NO. 19

NORTHERN HIGH SCHOOL
HOWARD COUNTY PUBLIC SCHOOL SYSTEM
Plat Nos. 10406 & 10407
ELECTION DISTRICT NO. 3
CONTRACT No. 44-4066-D

SCALE AS SHOWN
SHEET 2 OF 3



PROFILE SCALE
 HORIZ. : 1"=50'
 VERT. : 1"=5'



PROFILE OF FIRE HYDRANT RELOCATION AT STATION 4+15

DEPARTMENT OF PUBLIC WORKS HOWARD COUNTY, MARYLAND <i>Robert Bunnings</i> 8-8-03 CHIEF, BUREAU OF UTILITIES DATE	DEPARTMENT OF PLANNING AND ZONING HOWARD COUNTY, MARYLAND <i>Alan Dammann</i> 8/8/03 CHIEF, DEVELOPMENT ENGINEERING DIVISION DATE	GLWGUTSCHICK LITTLE & WEBER, P.A. CIVIL ENGINEERS, LAND SURVEYORS, LAND PLANNERS, LANDSCAPE ARCHITECTS 3909 NATIONAL DRIVE - SUITE 250 - BURTONSVILLE OFFICE PARK BURTONSVILLE, MARYLAND 20866 TEL: 301-421-4024 BAL: 410-880-1820 DC/VA: 301-989-2524 FAX: 301-421-4186		DES: BB/MBT DRN: BB CHK: MBT/CKG DATE: 28-JUL-03 BY NO REVISION DATE	WATER EXTENSION PROFILE 600' SCALE MAP NO. 10 BLOCK NO. 19	NORTHERN HIGH SCHOOL HOWARD COUNTY PUBLIC SCHOOL SYSTEM Plat Nos. 10406 & 10407 ELECTION DISTRICT NO. 3 CONTRACT No. 44-4066-D	SCALE AS SHOWN SHEET 3 OF 3
---	--	---	--	--	---	--	--------------------------------

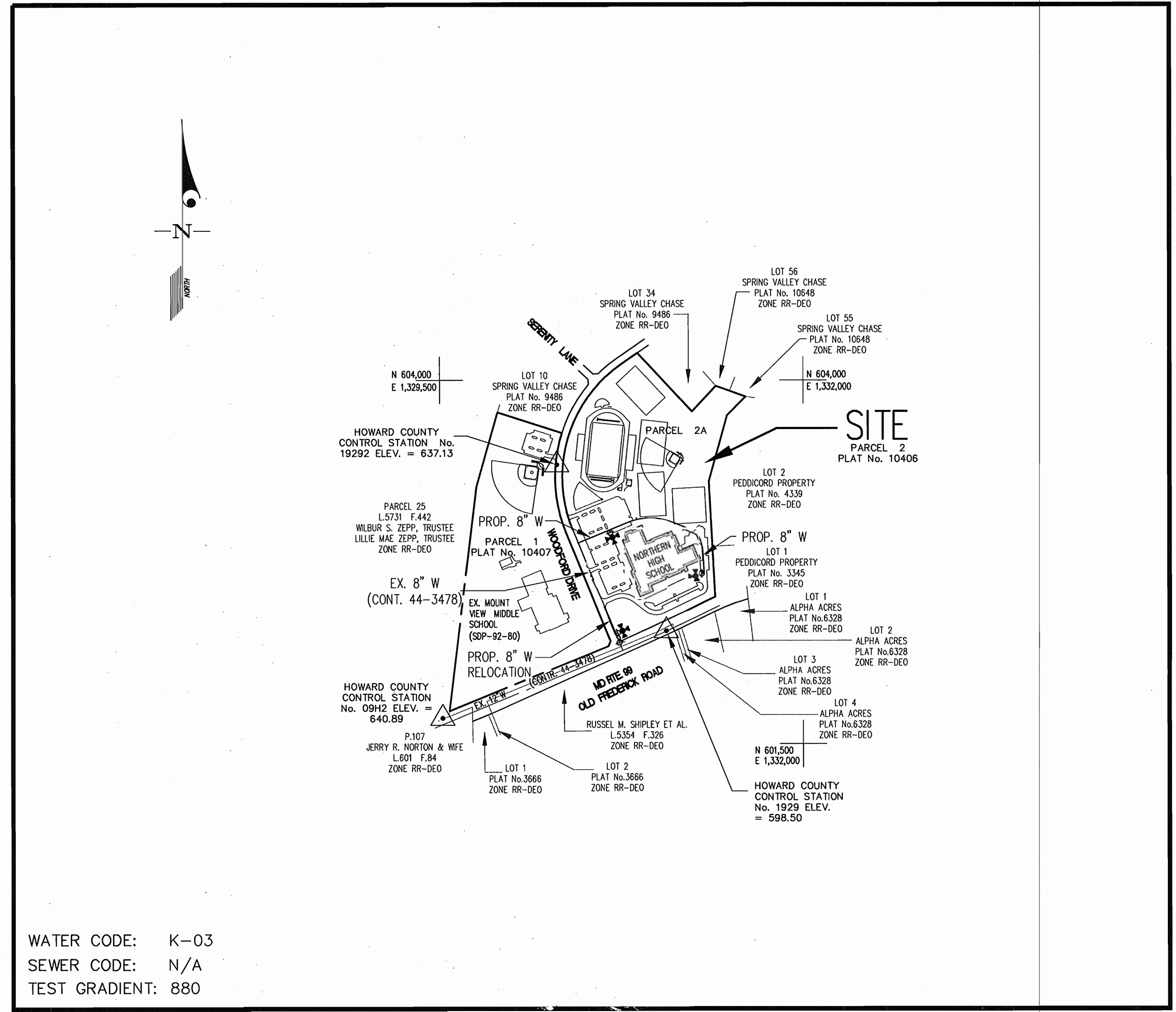
GLW FILE #00177

QUANTITIES				
ITEMS	QUANTITIES ESTIMATED	AS-BUILT		
		QUANTITIES	TYPE	MANUFACTURER/SUPPLIER
6" WATER	48 L.F.		DIP CLASS 52	U.S. PIPE & FOUNDRY / HUGHES
8" WATER	1,450 L.F.			
8" x 8" T.S.&V.	1	TAPPING SURVEIL VALVE	C-201	ROAD KENNEDY VALVE
8" x 8" T.	1 EA.	1 EA.	MS 1/2 153	TYLER / HUGHES
8" 1/8 H.B.	5 EA.		MS 45 (1/8)	" / "
6" VALVE (FH)	4		GATE 1/CS09	KENNEDY VALVE / "
8" PLUG	2		MS 1/CS53	TYLER / "
8" x 6" F.H.T.	4		" "	" / "
FIRE HYDRANT	3(NEW) & 1(RELOCATED)		CS02 /A-126	KENNEDY VALVE / "
4" CAP	1		MS 1/CS53	TYLER / "
1" WHC	10 L.F.			
4" WHC	10 L.F.	10 L.F.	DIP CLASS 52	U.S. PIPE & FOUNDRY / HUGHES

NAME OF UTILITY CONTRACTOR: RBS CONTRACTING

SURVEY AND DRAFTING DIV.	CHECKBOX: AS-BUILT DATE:
--------------------------	--------------------------

TYPE OF BUILDING	INSTITUTIONAL (PUBLIC SCHOOL)
NUMBER OF UNITS	2 BUILDINGS WITH WHC'S
NUMBER OF S.H.C.'s	N/A - SEPTIC
NUMBER OF W.H.C.'s	3 (1-8", 1-3" and 1-1")
DRAINAGE AREA	LITTLE PATUXENT
TREATMENT PLANT	N/A - SEPTIC



GENERAL NOTES

- PART I**
- APPROXIMATE LOCATION OF EXISTING MAINS ARE SHOWN. THE CONTRACTOR SHALL TAKE ALL NECESSARY PRECAUTIONS TO PROTECT EXISTING MAINS AND SERVICES AND MAINTAIN UNINTERRUPTED SERVICE. ANY DAMAGE INCURRED SHALL BE REPAIRED IMMEDIATELY TO THE SATISFACTION OF THE ENGINEER AT THE CONTRACTOR'S EXPENSE.
 - ALL HORIZONTAL CONTROLS ARE BASED ON MARYLAND STATE COORDINATES, NAD 83/91 (NORTH AMERICAN DATUM).
 - ALL VERTICAL CONTROLS ARE BASED ON NAVD 88.
 - ALL PIPE ELEVATIONS SHOWN ARE INVERT ELEVATIONS UNLESS OTHERWISE NOTED ON THE PLANS.
 - CLEAR ALL UTILITIES BY A MINIMUM OF 12". CLEAR ALL POLES BY 5-0" MINIMUM OR TUNNEL AS REQUIRED UNLESS OTHERWISE NOTED. THE OWNER HAS CONTACTED THE UTILITY COMPANIES AND HAS MADE ARRANGEMENTS FOR BRACING OF POLES AS SHOWN ON THE DRAWINGS. IN THE EVENT THE CONTRACTOR'S WORK REQUIRES THE BRACING OF ADDITIONAL POLES, ANY COST INCURRED BY THE OWNER FOR BRACING OF ADDITIONAL POLES OR DAMAGES SHALL BE DEDUCTED FROM MONIES OWED THE CONTRACTOR. THE CONTRACTOR SHALL COORDINATE WITH THE UTILITY COMPANIES TO SCHEDULE THE BRACING OF THE POLES.
 - FOR DETAILS NOT SHOWN ON THE DRAWINGS, AND FOR MATERIALS AND CONSTRUCTION METHODS USE HOWARD COUNTY DESIGN MANUAL, VOLUME IV, STANDARD SPECIFICATIONS AND DETAIL FOR CONSTRUCTION (LATEST EDITION). THE CONTRACTOR SHALL HAVE A COPY OF VOLUME IV ON THE JOB.
 - WHERE TEST PITS HAVE BEEN MADE ON EXISTING UTILITIES, THEY ARE NOTED BY THE SYMBOL AT THE LOCATION OF THE TEST PIT. A NOTE OR NOTES CONTAINING THE RESULTS OF THE TEST PIT OR PITS IS INCLUDED ON THE DRAWINGS. EXISTING UTILITIES IN THE VICINITY OF THE PROPOSED WORK FOR WHICH TEST PITS HAVE NOT BEEN DUG SHALL BE LOCATED BY THE CONTRACTOR TWO WEEKS IN ADVANCE OF CONSTRUCTION OPERATIONS AT HIS OWN EXPENSE.
 - CONTRACTOR SHALL NOTIFY THE FOLLOWING UTILITY COMPANIES OR AGENCIES AT LEAST (5) WORKING DAYS BEFORE STARTING WORK SHOWN ON THESE PLANS:

AT&T	1-800-252-1133
BGE (CONTRACTOR SERVICES)	410-850-4620
BGE (UNDER GROUND DAMAGE CONTROL)	410-787-9068
HOWARD CO. DPW, BUREAU OF UTILITIES	410-313-4900
COLONIAL PIPELINE CO.	410-795-1390
MISS UTILITY	1-800-257-7777
STATE HIGHWAY ADMINISTRATION	410-531-5533
VERIZON	1-800-743-0033/410-224-9210
 - TREES AND SHRUBS ARE TO BE PROTECTED FROM DAMAGE TO MAXIMUM EXTENT. TREES AND SHRUBS LOCATED WITHIN THE CONSTRUCTION STRIP ARE NOT TO BE REMOVED OR DAMAGED BY THE CONTRACTOR.
 - CONTRACTOR SHALL REMOVE TREES, STUMPS AND ROOTS ALONG LINE OF EXCAVATION. PAYMENT FOR SUCH REMOVAL SHALL BE INCLUDED IN THE UNIT PRICE BID FOR CONSTRUCTION OF THE MAIN.
 - THE CONTRACTOR SHALL NOTIFY THE BUREAU OF HIGHWAYS, HOWARD COUNTY, AT (410) 313-7450 AT LEAST FIVE (5) WORKING DAYS BEFORE OPEN CUTTING OR BORING/JACKING OF ANY COUNTY ROAD FOR LAYING WATER/SEWER MAINS OR HOUSE CONNECTIONS. THE APPROVAL OF THESE DRAWINGS WILL CONSTITUTE COMPLIANCE WITH DPW REQUIREMENTS PER SECTION 18.114(A) OF THE HOWARD COUNTY CODE.
- PART II - WATER**
- ALL WATER MAINS TO BE D.I.P. CLASS 52 UNLESS OTHERWISE NOTED.
 - TOPS OF ALL WATER MAINS TO HAVE A MINIMUM OF 3-6" COVER UNLESS OTHERWISE NOTED.
 - VALVES ADJACENT TO TEES SHALL BE STRAPPED TO TEES.
 - ALL FITTINGS SHALL BE BUTTRESSED OR ANCHORED WITH CONCRETE IN ACCORDANCE WITH THE STANDARD DETAILS UNLESS OTHERWISE PROVIDED FOR ON THE DRAWINGS.
 - FIRE HYDRANTS SHALL BE SET TO THE BURY LINE ELEVATIONS SHOWN ON THE DRAWINGS. ALL FIRE HYDRANTS SHALL BE INSTALLED IN ACCORDANCE WITH THE STANDARD DETAILS. SOIL AROUND THE FIRE HYDRANT SHALL BE COMPACTED IN ACCORDANCE WITH SECTION 1000 AND 1005 OF THE STANDARD SPECIFICATIONS.
 - THE CONTRACTOR SHALL NOT OPERATE ANY WATER MAIN VALVES ON THE EXISTING WATER SYSTEM.
 - ALL WATER HOUSE CONNECTIONS SHALL BE FOR INSIDE METER SETTING UNLESS OTHERWISE NOTED ON PLANS OR IN SPECIFICATIONS.
 - FOR SPRINKLER SYSTEM FOR ALL TOWNHOMES OR MULTI-FAMILY DWELLING UNITS SHOULD HAVE A MINIMUM OF 1' CONNECTION WITH A 3/4" METER.
- PART III - SEWER**
- PUBLIC SEWER IS NOT APPLICABLE TO THIS PROJECT SINCE IT IS SERVED BY A PRIVATE SEPTIC SYSTEM PER SDP-03-33.

SEDIMENT CONTROL MEASURES WILL BE IMPLEMENTED IN ACCORDANCE WITH SECTION 219 OF THE SPECIFICATIONS & WITH DRAWINGS SDP-03-33.

REVIEWED FOR HOWARD SOIL CONSERVATION DISTRICT AND MEETS TECHNICAL REQUIREMENT.

Jim Myers 8/13/03
SIGNATURE DATE
U.S.D.A. NATURAL RESOURCES CONSERVATION SERVICE

THIS DEVELOPMENT PLAN IS APPROVED FOR SOIL EROSION AND SEDIMENT CONTROL BY THE HOWARD SOIL CONSERVATION DISTRICT.

APPROVED:
John R. Robertson 8/13/03
HOWARD S.C.D. DATE

CONTRACT No. 44-4066-D
NORTHERN HIGH SCHOOL
HOWARD COUNTY, MARYLAND
DEPARTMENT OF PUBLIC WORKS

DEPARTMENT OF PUBLIC WORKS
HOWARD COUNTY, MARYLAND

Ruth Benjamin 8-8-03
CHIEF, BUREAU OF UTILITIES DATE

DEPARTMENT OF PLANNING AND ZONING
HOWARD COUNTY, MARYLAND

John D. ... 8/13/03
CHIEF, DEVELOPMENT ENGINEERING DIVISION DATE

GLW GUTSCHICK LITTLE & WEBER, P.A.
CIVIL ENGINEERS, LAND SURVEYORS, LAND PLANNERS, LANDSCAPE ARCHITECTS
3909 NATIONAL DRIVE - SUITE 250 - BURTONSVILLE OFFICE PARK
BURTONSVILLE, MARYLAND 20866
TEL: 301-421-4024 BAL: 410-880-1820 DC/VA: 301-989-2524 FAX: 301-421-4186



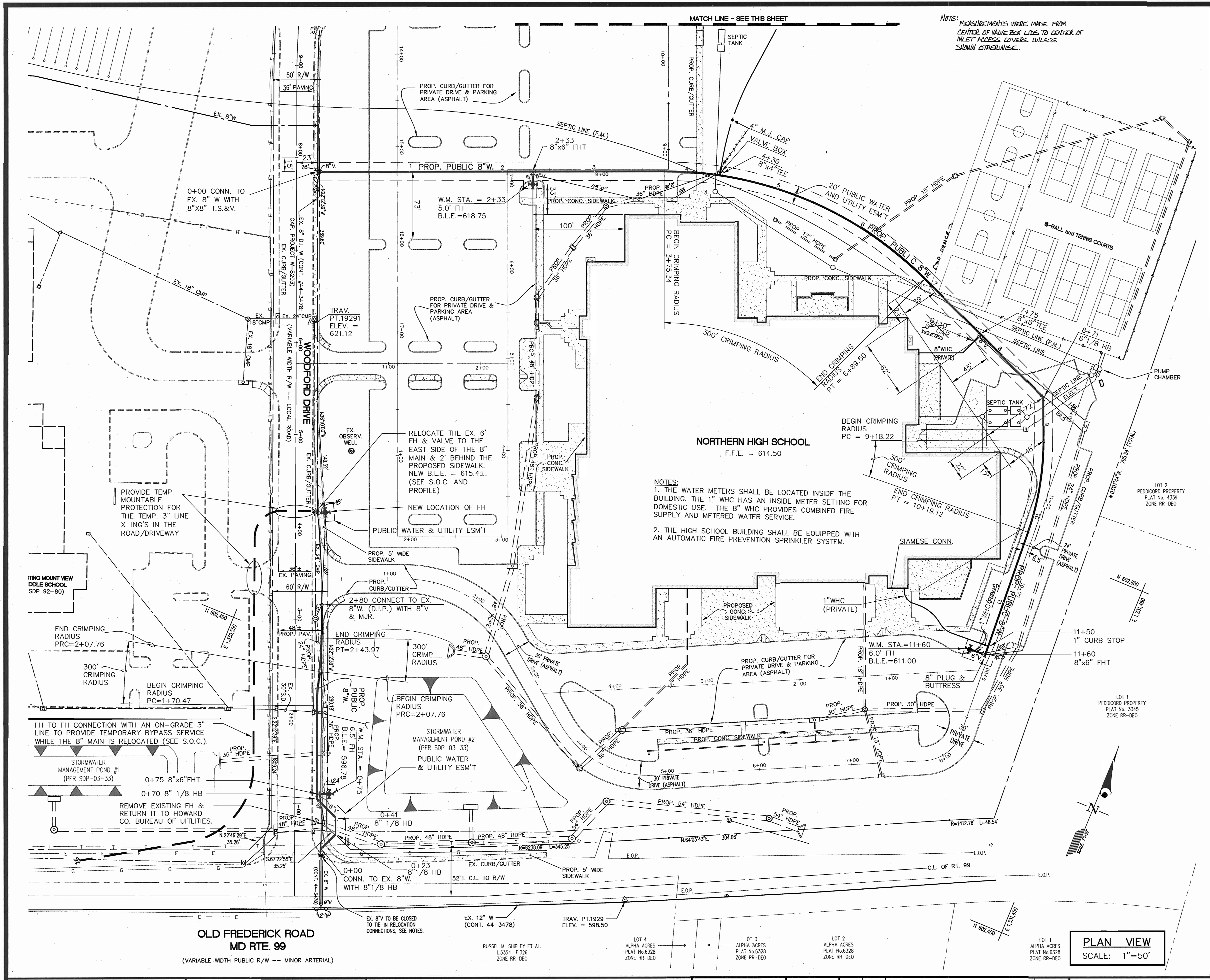
DES: BB/MBT					
DRN: BB/KLP					
CHK: MBT/CKG					
DATE: 28-JUL-03	BY: MCI	NO	AS-BUILT DATA ADDED	11/24/04	
			REVISION	DATE	

COVER SHEET
SCALE: AS SHOWN

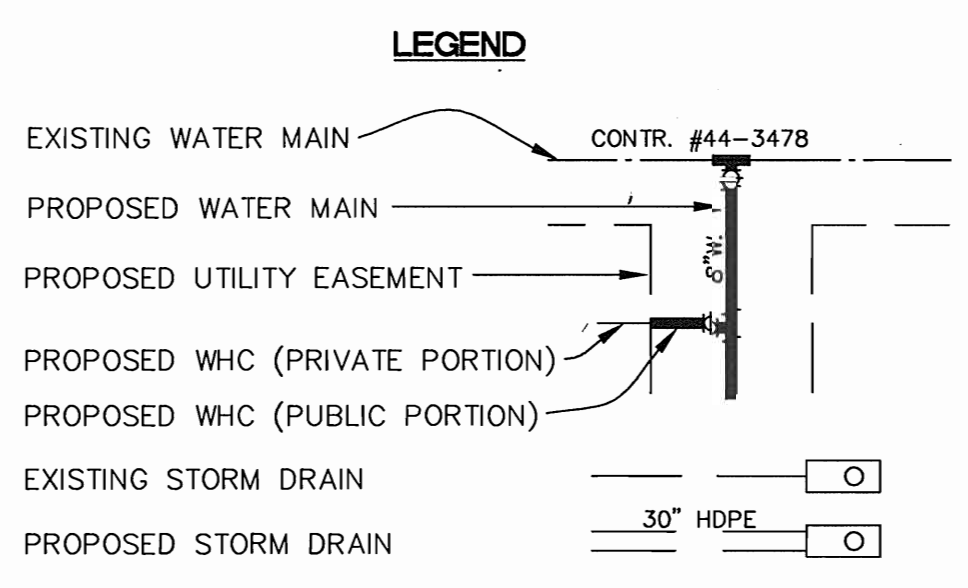
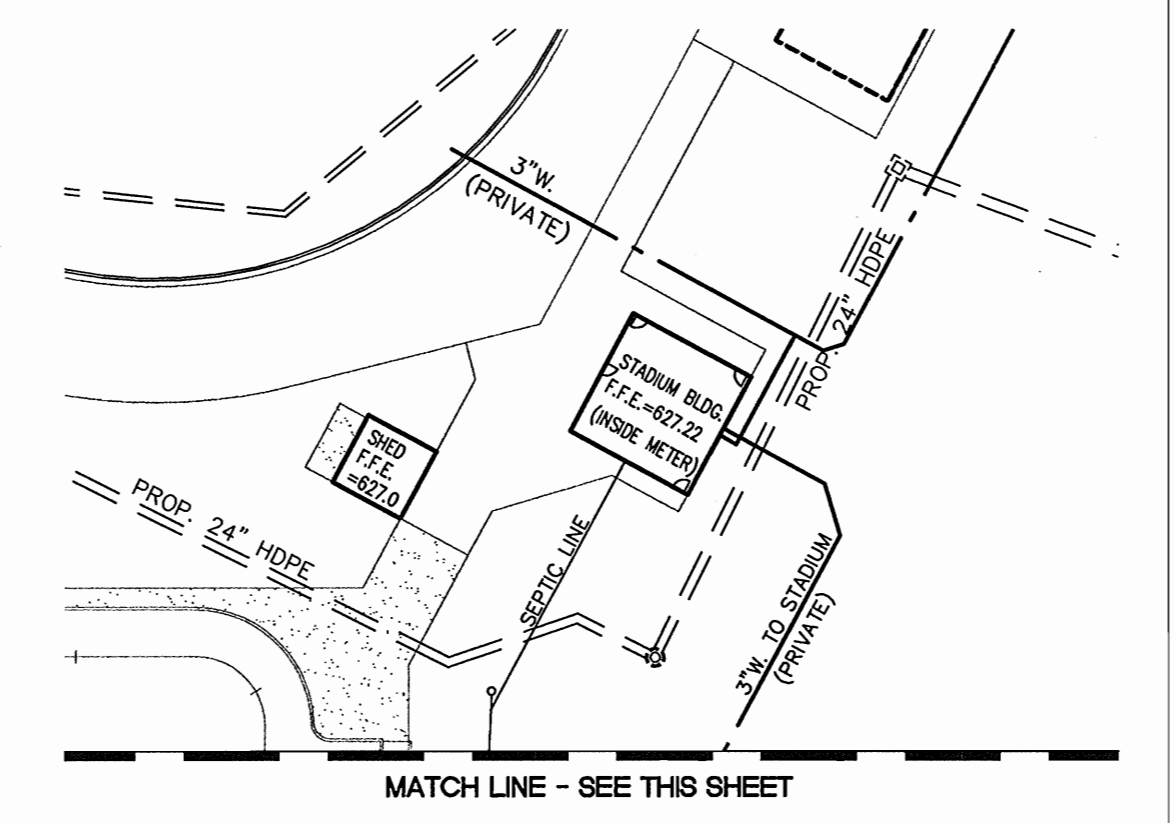
600' SCALE MAP NO. 10 BLOCK NO. 19

NORTHERN HIGH SCHOOL
HOWARD COUNTY PUBLIC SCHOOL SYSTEM
Plat Nos. 10406 & 10407
ELECTION DISTRICT NO. 3
CONTRACT No. 44-4066-D

SCALE AS SHOWN
SHEET 1 OF 3



NOTE: MEASUREMENTS WERE MADE FROM CENTER OF VALVE BOX LINES TO CENTER OF INLET ACCESS COVERS UNLESS SHOWN OTHERWISE.



STAKE OUT DIMENSIONS FOR WOODFORD DRIVE 8" W AND FH RELOCATION

WATER LINE STATION/FITTING	STATION	OFFSET
0+00, 8" 1/8-HB	0+51.10	28.55' R
0+23, 8" 1/8-HB	0+67.53	44.99' R
0+41, 8" 1/8-HB	0+85.11	44.99' R
0+70, 8" 1/8-HB	1+05.87	24.25' R
1+75, 8" 6" FHT	1+11	24.25' R
1+75, 6" VALVE	1+11	33.17' R (CENTERED IN SIDEWALK)
1+75, FH	1+11	37.67' R (2 FT. BEHIND SIDEWALK)
1+70.48, PC	2+06.18	24.25' R
2+07.76, PRC	2+43.36	28.45' R
2+43.98, PT	2+79.50	28.65' R
2+80, 8" VALVE CONNECTION	3+15.73	28.65' R
4+30, EX. 8" 6" FHT	4+15	EX. PER CONTR. #44-3478
4+30, 6" VALVE	4+15	28.0' R (CENTERED IN SIDEWALK)
4+30, FH	4+15	32.50' R (2 FT. BEHIND SIDEWALK)

*STATION LOCATION PER CONTRACT #44-3478 (CAPITAL PROJECT W-803)

- SEQUENCE OF CONSTRUCTION:**
- THE FOLLOWING ITEMS ARE FOR THE RELOCATION OF A PORTION OF THE (CONTRACT #44-3478) 8" WATER MAIN (WM) AND THE FIRE HYDRANT IN THE VICINITY OF STATION 4+15 ON WOODFORD DRIVE. COORDINATE THE CONSTRUCTION OF THE WATER MAIN ON THE HIGH SCHOOL PARCEL WITH THE SDP-03-33 CONSTRUCTION WORK.
- CONTRACTOR SHALL NOTIFY ALL WATER CUSTOMERS ON WOODFORD DRIVE OF THE IMPENDING TEMPORARY SHUTDOWN AT LEAST FIVE (5) WORKING DAYS PRIOR OF THE WATER MAIN SHUTDOWN. CONTRACTOR SHALL COORDINATE THE SHUTDOWN WITH THE HOWARD COUNTY PUBLIC SCHOOL SYSTEM SO THAT IT IS AT THE LEAST DISRUPTIVE TIME FOR MOUNT VUE MIDDLE SCHOOL AND OTHER WATER CUSTOMERS ON WOODFORD DRIVE.
 - HAND DIG (OR EXCAVATE WITH CAUTION) DOWN TO THE 8" WATER MAIN (WM) IN THE VICINITY OF WM STATION 2+80 IN ORDER TO INSTALL THE NEW 8" VALVE PLUS TWO (2) LENGTHS OF D.I.P. PRECEDING THE NEW VALVE.
 - CLOSE THE VALVE NEAR WM STATION 0+00 IN ORDER TO INSTALL THE 8" VALVE (IN CLOSED POSITION) AND D.I.P.'S IN THE VICINITY OF WM STATION 2+80 (S.O.C. #2). THE NEW VALVE & ASSOCIATED LENGTHS OF D.I.P.'S MUST BE COMPLETED WITHIN SIX (6) HOURS.
 - HOOK UP THE TEMPORARY BYPASS WATER SERVICE BETWEEN THE EXISTING FH SOUTH OF SIM POND #1 AND THE FH IN THE VICINITY OF STATION 4+15 (WOODFORD RD C.L.). THIS SEQUENCE CAN BE PERFORMED SIMULTANEOUSLY WITH S.O.C. 2&3 BUT DO NOT OPEN THE 7 1/2" UNTIL THE NEW 8" VALVE INSTALLATION (S.O.C. #3) HAS BEEN COMPLETED.
 - COMPLETE THE REMAINDER OF THE 8" WM RELOCATION WITHIN TWO (2) CONSECUTIVE WORKING DAYS. COORDINATE THE PARTIAL INSTALLATION OF THE OTHER UTILITY CROSSINGS AS NECESSARY (SEE ALSO SDP-03-33). NOTE: SO THAT THE 8" WM RELOCATION CAN BE COMPLETED WITHIN THE SHORTEST POSSIBLE TIME PERIOD, THE CONTRACTOR MAY INSTALL ANY PORTION OF THE NEW 8" WM RELOCATION THAT IS NOT NEAR THE EXISTING 8" WM IN ADVANCE OF S.O.C. #3. ANY PORTION OF THE ABANDONED 8" WM THAT IS NOT REMOVED SHALL BE FILLED WITH A FLOWABLE FILL MATERIAL (SUCH AS LOW SLUMP CONCRETE).
 - ONCE THE 8" WM HAS BEEN RELOCATED, DISMANTLE THE TEMPORARY BYPASS WATER SERVICE, CLOSE THE ASSOCIATED FH'S AND OPEN THE VALVES NEAR WM STATION 0+00 AND AT 2+80.
 - TO MINIMIZE THE WM SHUTDOWN FREQUENCY, THE FH RELOCATION AT WOODFORD DRIVE STATION 4+15 CAN BE PERFORMED SIMULTANEOUSLY WITH INSTALLATION OF THE NEW 8" VALVE AT WM STATION 2+80. COMPLETE THE FOLLOWING WITHIN SIX (6) HOURS FOR THE FH RELOCATION:
 - HAND DIG (OR EXCAVATE WITH CAUTION) DOWN TO THE FH AND ITS CONNECTION TO THE WM.
 - CLOSE THE 8" VALVE NEAR WM STATION 0+00.
 - DISASSEMBLE THE EXISTING FH AND ITS ASSOCIATED 6" VALVE FROM THE TEE CONNECTION, THEN SET THEM ASIDE.
 - UNBOLT THE EXISTING 8" TEE FROM THE WM.
 - ROTATE THE 8" TEE (ALONG THE WM CENTER LINE AXIS) SO THE 6" OPENING FACES EAST AND LEVEL. REPLACE AND TIGHTEN THE BOLTS.
 - REATTACHED THE 6" VALVE, BOX AND FH WITH NEW 6" D.I.P. TO THEIR NEW POSITION IN ACCORDANCE WITH HOWARD CO. DETAIL W-1.11 AND THESE DRAWINGS.
 - OPEN THE 8" VALVE (ITEM 'B' ABOVE).

PLAN VIEW
SCALE: 1"=50'

GLW FILE #00177

DEPARTMENT OF PUBLIC WORKS
HOWARD COUNTY, MARYLAND
R. M. B... 8-9-03
CHIEF, BUREAU OF UTILITIES

DEPARTMENT OF PLANNING AND ZONING
HOWARD COUNTY, MARYLAND
C. J. ... 8/2/03
CHIEF, DEVELOPMENT ENGINEERING DIVISION

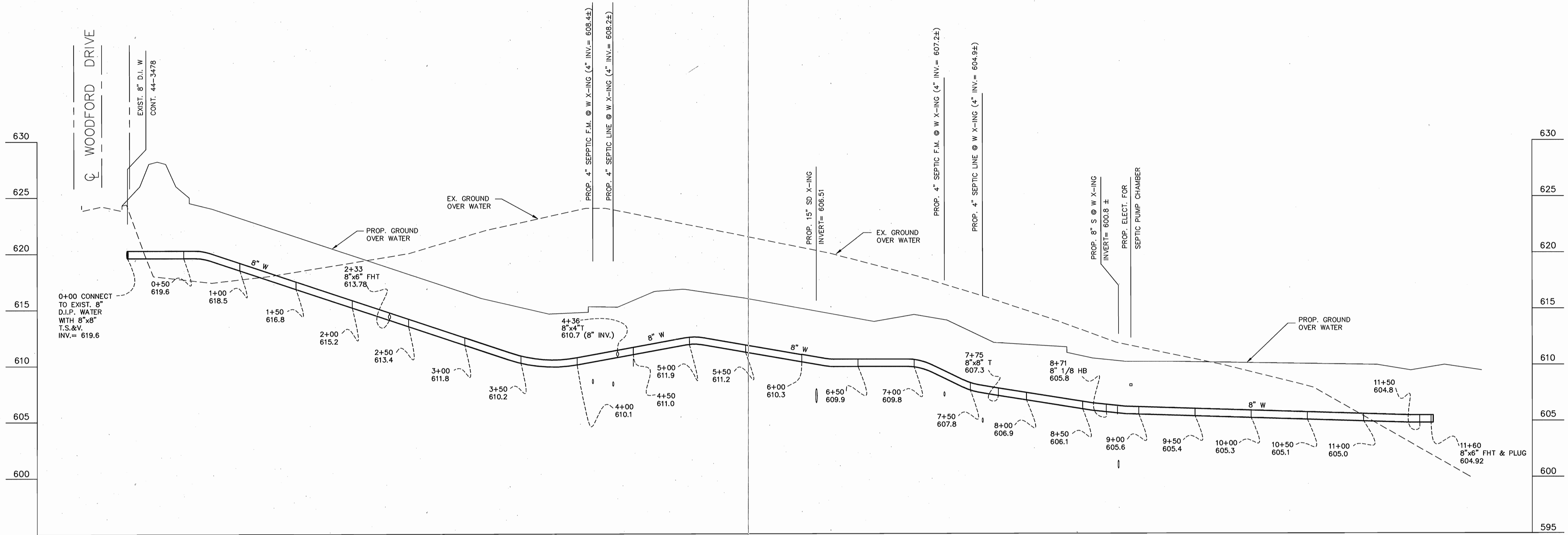
GLWGUTSCHICK LITTLE & WEBER, P.A.
CIVIL ENGINEERS, LAND SURVEYORS, LAND PLANNERS, LANDSCAPE ARCHITECTS
3909 NATIONAL DRIVE - SUITE 250 - BURTONVILLE OFFICE PARK
BURTONVILLE, MARYLAND 20866
TEL: 301-421-4024 FAX: 301-421-4186



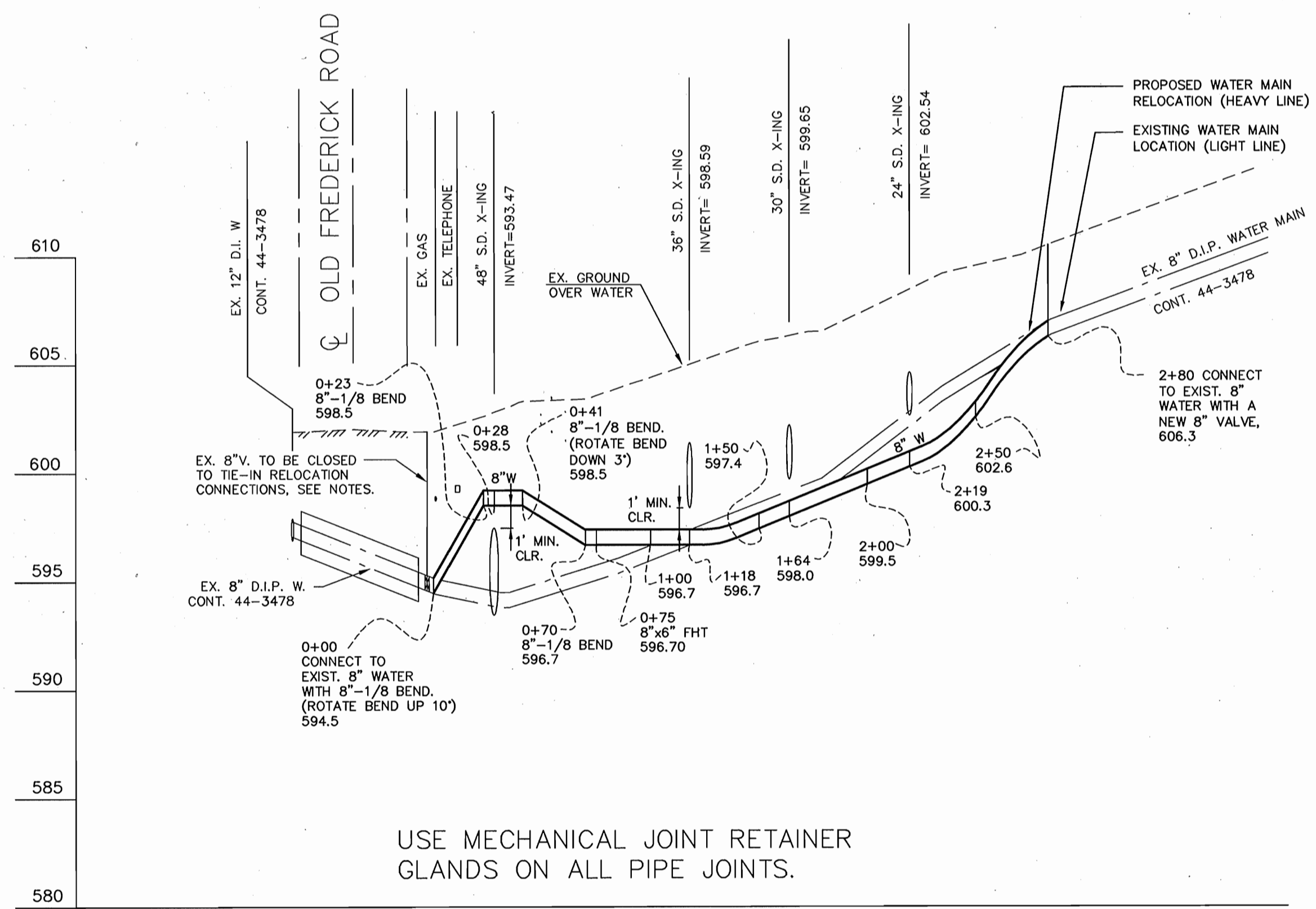
DES: BB/MBT	
DRN: BB/KLP	
CHK: MBT/CKG	
DATE: 28-JUL-03	
BY: NO	
REVISION: AS-BUILT DATA ADDED	
DATE: 11/21/04	

WATER EXTENSION PLAN
600' SCALE MAP NO. 10 BLOCK NO. 19

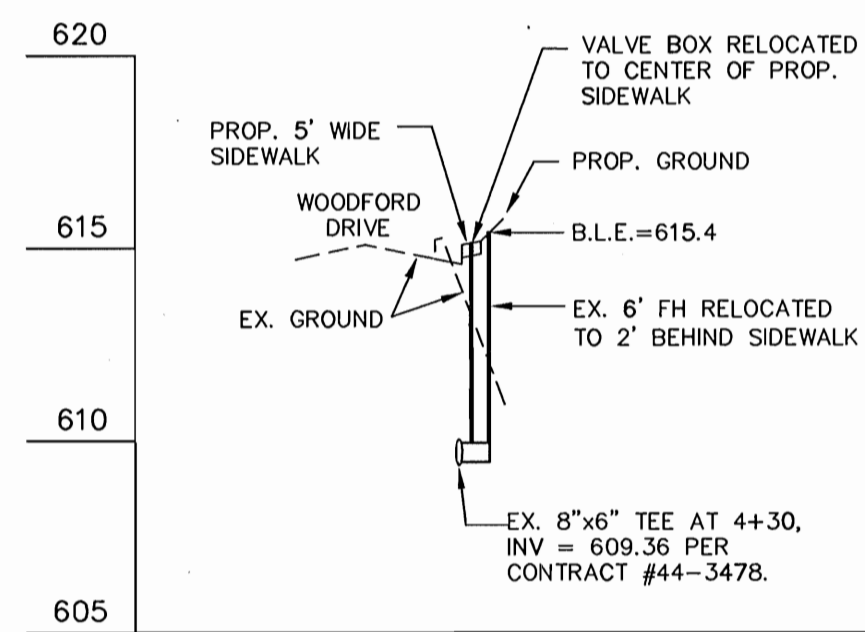
NORTHERN HIGH SCHOOL
HOWARD COUNTY PUBLIC SCHOOL SYSTEM
Plot Nos. 10406 & 10407
ELECTION DISTRICT NO. 3
CONTRACT No. 44-4066-D
SCALE AS SHOWN
SHEET 2 OF 3



PROFILE SCALE
 HORIZ. : 1" = 50'
 VERT. : 1" = 5'



USE MECHANICAL JOINT RETAINER
 GLANDS ON ALL PIPE JOINTS.



PROFILE OF FIRE HYDRANT
 RELOCATION AT STATION 4+15

GLW FILE #00177

DEPARTMENT OF
 PUBLIC WORKS
 HOWARD COUNTY, MARYLAND
R. L. ... 8-8-03
 CHIEF, BUREAU OF UTILITIES

DEPARTMENT OF
 PLANNING AND ZONING
 HOWARD COUNTY, MARYLAND
...
 CHIEF, DEVELOPMENT ENGINEERING DIVISION

GLWGUTSCHICK LITTLE & WEBER, P.A.
 CIVIL ENGINEERS, LAND SURVEYORS, LAND PLANNERS, LANDSCAPE ARCHITECTS
 3909 NATIONAL DRIVE - SUITE 250 - BURTONSVILLE OFFICE PARK
 BURTONSVILLE, MARYLAND 20866
 TEL: 301-421-4024 BAL: 410-880-1820 DC/VA: 301-989-2524 FAX: 301-421-4186



DES: BB/MBT				
DRN: BB				
CHK: MBT/CKG				
DATE: 20-JUL-03	BY: NO	REVISION	DATE	

WATER EXTENSION
 PROFILE
 600' SCALE MAP NO. 10 BLOCK NO. 19

NORTHERN HIGH SCHOOL
 HOWARD COUNTY PUBLIC SCHOOL SYSTEM
 Plat Nos. 10406 & 10407
 ELECTION DISTRICT NO. 3
 CONTRACT No. 44-4066-D

SCALE AS SHOWN
 SHEET 3 OF 3