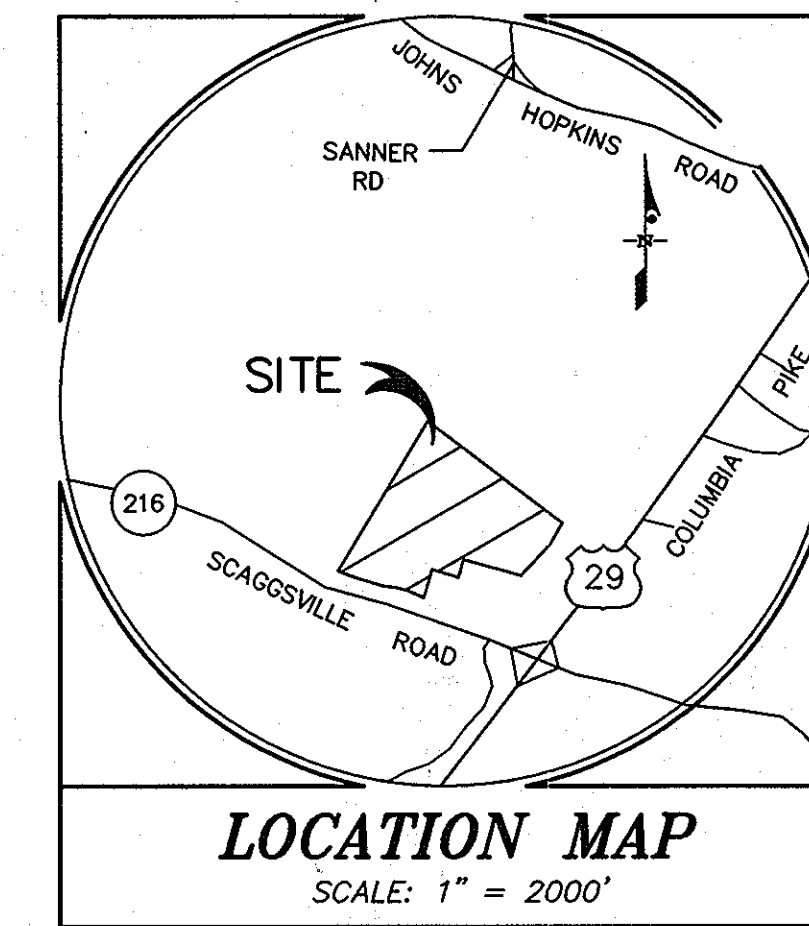


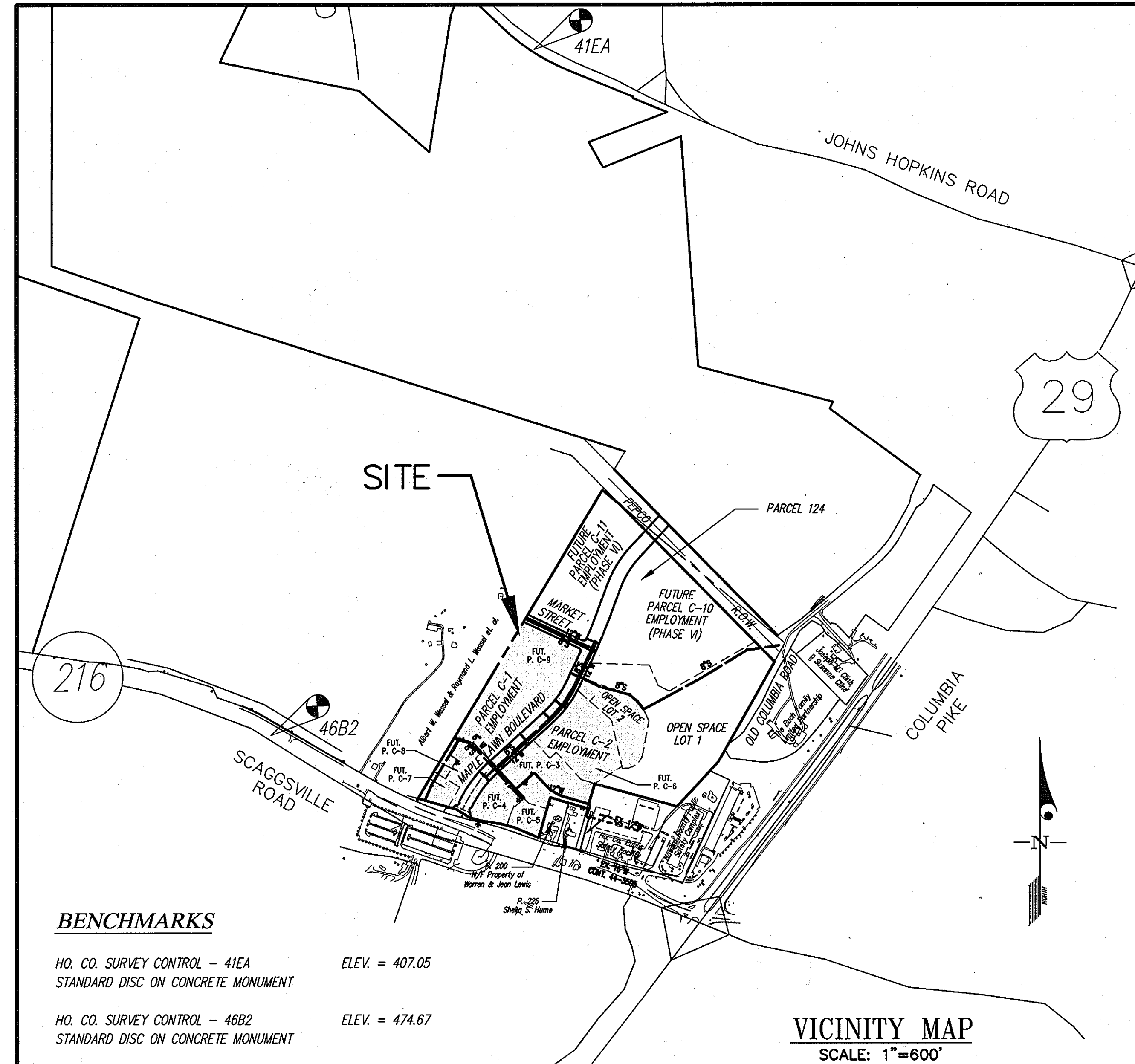
CONTRACT No. 24-4062-D  
**MAPLE LAWN FARMS**  
 BUSINESS DISTRICT- AREA 1, PARCELS C-1 & C-2  
 AND OPEN LOTS 1 & 2, MAPLE LAWN BOULEVARD  
 HOWARD COUNTY, MARYLAND  
 DEPARTMENT OF PUBLIC WORKS



QUANTITIES Δ				
ITEMS	QUANTITIES ESTIMATED	AS BUILT		
		QUANTITIES	TYPE	MANUFACTURER/SUPPLIER
12" WATER	2,718 L.F.	2,718 L.F.	DIP CL 52	ATLANTIC STATES/NAT. WATER WORKS
8" WATER	778 L.F.	778 L.F.	DIP CL 52	ATLANTIC STATES/NAT. WATER WORKS
6" WATER	87 L.F.	87 L.F.	DIP CL 52	ATLANTIC STATES/NAT. WATER WORKS
4" W.H.C.	65 L.F.	65 L.F.	DIP CL 52	ATLANTIC STATES/NAT. WATER WORKS
1-1/2" W.H.C.	160 L.F.	160 L.F.	COPPER	NAT. WATER WORKS
2" W.H.C.	100 L.F.	100 L.F.	COPPER	NAT. WATER WORKS
16"x6" T.S.&V.	1	1	SLEEVE/VALVE	SMITH BLAIR MUELLER/NAT. WATER WORKS
12" 1/8 H.B.	6	6	MJ DIP	UNION FOUNDRY/NAT. WATER WORKS
12"x12" T	4	4	MJ DIP	UNION FOUNDRY/NAT. WATER WORKS
12"x8" T	1	1	MJ DIP	UNION FOUNDRY/NAT. WATER WORKS
12"x6" T	5	5	MJ DIP	UNION FOUNDRY/NAT. WATER WORKS
12"x4" T	2	2	MJ DIP	UNION FOUNDRY/NAT. WATER WORKS
12"x8" REDUCER	2	2	MJ DIP	UNION FOUNDRY/NAT. WATER WORKS
12"x8" CROSS	1	1	MJ DIP	UNION FOUNDRY/NAT. WATER WORKS
12" VALVE	4	4	GATE VALVE	MUELLER/NAT. WATER WORKS
12" CAP	2	2	MJ DIP	UNION FOUNDRY/NAT. WATER WORKS
8" 1/8 H.B.	2	2	MJ DIP	UNION FOUNDRY/NAT. WATER WORKS
8" 1/16 H.B.	1	1	MJ DIP	UNION FOUNDRY/NAT. WATER WORKS
8" 1/32 H.B.	1	1	MJ DIP	UNION FOUNDRY/NAT. WATER WORKS
8"x8" T	2	2	MJ DIP	UNION FOUNDRY/NAT. WATER WORKS
8"x6" T	3	3	MJ DIP	UNION FOUNDRY/NAT. WATER WORKS
8"x4" T	1	1	MJ DIP	UNION FOUNDRY/NAT. WATER WORKS
8" VALVE	6	6	GATE VALVE	MUELLER/NAT. WATER WORKS
8" CAP	7	7	MJ DIP	UNION FOUNDRY/NAT. WATER WORKS
6" VALVE	9	9	GATE VALVE	MUELLER/NAT. WATER WORKS
4" VALVE	3	3	GATE VALVE	MUELLER/NAT. WATER WORKS
4" CAP	3	3	MJ DIP	UNION FOUNDRY/NAT. WATER WORKS
FIRE HYDRANT - 4.5'	1	1	A 423	MUELLER/NAT. WATER WORKS
FIRE HYDRANT - 5.0'	4	4	A 423	MUELLER/NAT. WATER WORKS
FIRE HYDRANT - 5.5'	2	2	A 423	MUELLER/NAT. WATER WORKS
FIRE HYDRANT - 6.0'	1	1	A 423	MUELLER/NAT. WATER WORKS
FIRE HYDRANT - 7.0'	1	1	A 423	MUELLER/NAT. WATER WORKS
8" PVC SEWER	2,469 L.F.	2,469 L.F.	PVC SDR35	J. M./NAT. WATER WORKS
8" D.I. SEWER	2,431 L.F.	2,431 L.F.	DIP CL 52	ATLANTIC STATES/NAT. WATER WORKS
4" SHC	10 L.F.	10 L.F.	PVC SDR35	J. M./NAT. WATER WORKS
6" SHC	40 L.F.	40 L.F.	PVC SDR35	J. M./NAT. WATER WORKS
MANHOLES	11	11	PRECAST CONC.	FREDERICK PRECAST CONCRETE
DROP MANHOLES	7	7	PRECAST CONC.	FREDERICK PRECAST CONCRETE
SHALLOW MANHOLES	3	3	PRECAST CONC.	FREDERICK PRECAST CONCRETE
4" STOPPERS	1	1	PVC SDR35	PLASTIC TRENDS/NAT. WATER WORKS
6" STOPPERS	2	2	PVC SDR35	PLASTIC TRENDS/NAT. WATER WORKS
8" STOPPERS	12	12	PVC SDR35	PLASTIC TRENDS/NAT. WATER WORKS

NAME OF UTILITY CONTRACTOR: **GRAY AND SON INC.**

SURVEY AND DRAFTING DIV. CHECKBOOK AS-BUILT DATE: **NOV. 9, 2004**



**BENCHMARKS**  
 HO. CO. SURVEY CONTROL - 41EA ELEV. = 407.05  
 STANDARD DISC ON CONCRETE MONUMENT  
 HO. CO. SURVEY CONTROL - 46B2 ELEV. = 474.67  
 STANDARD DISC ON CONCRETE MONUMENT

WATER AND SEWER CODE  
 COUNTY USE  
 WATER NO. E20  
 SEWER NO. 7690000  
 TEST GRADIENT: 700

TYPE OF BUILDING	OFFICE/RETAIL
NUMBER OF LOTS	2 - PARCELS
NUMBER OF S.H.C.'s	8-8" SEWER, 2-6" SEWER, 1-4" SEWER
NUMBER OF W.H.C.'s	2-8" WATER, 4" WATER, 1-1/2" WATER, 2-2" WATER
DRAINAGE AREA	△ LITTLE PATUXENT △ 1-c" water
TREATMENT PLANT	LITTLE PATUXENT WWTP

**AS BUILT**  
 DATE: **NOV. 9, 2004**

- GENERAL NOTES**
- PART I
- Approximate locations of existing mains are shown. The contractor shall take all necessary precautions to protect existing mains and services and maintain uninterrupted supply. Any damage incurred shall be repaired immediately to the satisfaction of the Engineer at the contractor's expense.
  - All horizontal controls are based on Maryland State Coordinates, NAD 83/91 as projected by Howard County Horizontal and Vertical Geodetic Control Station Numbers.
  - All vertical controls are based on NAVD 88.
  - All pipe elevations shown are invert elevations unless otherwise noted on the plans.
  - Clear all utilities by a minimum of 12". Clear all poles by 5'-0" minimum or tunnel as required unless otherwise noted. The owner has contacted the utility companies and has made arrangements for bracing of poles as shown on the drawings. In the event the contractor's work requires the bracing of additional poles, any cost incurred by the owner for the bracing of additional poles or damages shall be deducted from monies owed the contractor. The contractor shall coordinate with the utility companies to schedule the bracing of the poles.
  - For details not shown on the drawings, and for materials and construction methods use Howard County Design Manual, Volume IV, Standard Specifications and Details for Construction (Latest Edition). The contractor shall have a copy of Volume IV on the job.
  - Where test pits have been made on existing utilities, they are noted by the symbol ⊕ at the locations of the test pit. A note or notes containing the results of the test pit or pits is included on the drawings. Existing utilities in the vicinity of the proposed work for which test pits have not been dug shall be located by the contractor two weeks in advance of construction operations at his own expense.
  - The contractor shall notify the following utility companies or agencies at least (5) working days before starting work shown on these plans:

- |                                   |                             |
|-----------------------------------|-----------------------------|
| AT&T                              | 1-800-252-1133              |
| BGE (Contractor Services)         | 410-850-4620                |
| BGE (Under Ground Damage Control) | 410-787-9068                |
| Bureau of Utilities               | 410-313-4900                |
| Colonial Pipeline Co.             | 410-795-1390                |
| Miss Utility                      | 1-800-257-7777              |
| State Highway Administration      | 410-531-5533                |
| Verizon                           | 1-800-743-0033/410-224-9210 |

- Trees and shrubs are to be protected from damage to maximum extent. Trees and shrubs located within the construction strip are not to be removed or damaged by the contractor.
- The contractor shall remove trees, stumps and roots along line of excavation. Payment for such removal shall be included in the unit price bid for construction of the main.
- The contractor shall notify the Bureau of Highways, Howard County, at 410-313-2450 at least five (5) working days before any open cutting or boring/jacking of any County road or boring/jacking operation on County roads for laying water/sewer mains or house connections. The approval of these drawings will constitute compliance with DPW requirement per Section 18.114(a) of the Howard County Code.
- These water and sewer drawings are based on aerial topo performed by JDI in March of 1997, supplemented by field run topographic surveys performed by Gutschick, Little, and Weber, P.A. on various dates.

- PART II - WATER**
- All water mains to be D.I.P. Class 52 unless otherwise noted.
  - Tops of all water mains shall have a minimum of 3'-6" cover unless otherwise noted.
  - Valves adjacent to tees shall be strapped to tees.
  - All fittings shall be buttressed or anchored with concrete in accordance with the Standard Details unless otherwise provided for on the drawings.
  - Fire hydrants shall be set to the bury line elevations shown on the drawings. All fire hydrants shall be installed in accordance with Standard Details. Soil around the fire hydrant shall be compacted in accordance with Section 1000 and 1005 of the Standard Specifications.
  - The contractor shall not operate any water main valves on the existing water system.
- PART III - SEWER**
- All sewer mains shall be D.I.P. or P.V.C. unless otherwise noted.
  - All manholes shall be 4'-0" inside diameter unless otherwise noted.
  - Force mains shall be D.I.P. only.
  - Manholes shown with 12" and 16" walls are for brick manholes only.
  - Manholes designated W.T. in plan and profile shall have watertight frame and cover, Standard Detail G5.52. Where watertight manhole frames and covers are used, set top of frame 1'-6" above finished grade unless otherwise noted on the drawings.
  - House(s) with the symbol "C.N.S." indicates that the cellar cannot be served.

NOTE: THESE PLANS SUPERCEDE PLANS SIGNED ON 3/11/03.

L:\CADD\DRAWINGS\96079\Phase 1 (96079)\V.S. REDLINE\FINAL (BLACK)\96079\96079-REDLINE.dwg 08/03/2004 01:48:09 PM EDT

REVIEWED FOR HOWARD SOIL CONSERVATION DISTRICT AND MEETS TECHNICAL REQUIREMENT.  
 Jim Meyer 8/10/04  
 U.S.D.A. NATURAL RESOURCES CONSERVATION SERVICE  
 THIS DEVELOPMENT PLAN IS APPROVED FOR SOIL EROSION AND SEDIMENT CONTROL BY THE HOWARD SOIL CONSERVATION DISTRICT.  
 John L. Horton 8/10/04  
 HOWARD S.C.D.

DEPARTMENT OF PUBLIC WORKS  
 HOWARD COUNTY, MARYLAND  
 Chief, Bureau of Utilities

DEPARTMENT OF PLANNING AND ZONING  
 HOWARD COUNTY, MARYLAND  
 Chief, Development Engineering Division

**GLW GUTSCHICK LITTLE & WEBER, P.A.**  
 CIVIL ENGINEERS, LAND SURVEYORS, LAND PLANNERS, LANDSCAPE ARCHITECTS  
 3909 NATIONAL DRIVE - SUITE 250 - BURTONSVILLE OFFICE PARK  
 BURTONSVILLE, MARYLAND 20866  
 TEL: 301-421-4024 FAX: 301-989-2524



DES: DEV	8/3/04
DRN: BB	9/30/04
CHK: CKG	11/1/04
DATE: 02/03	11/24/07
BY: NO	
REVISION	
DATE	

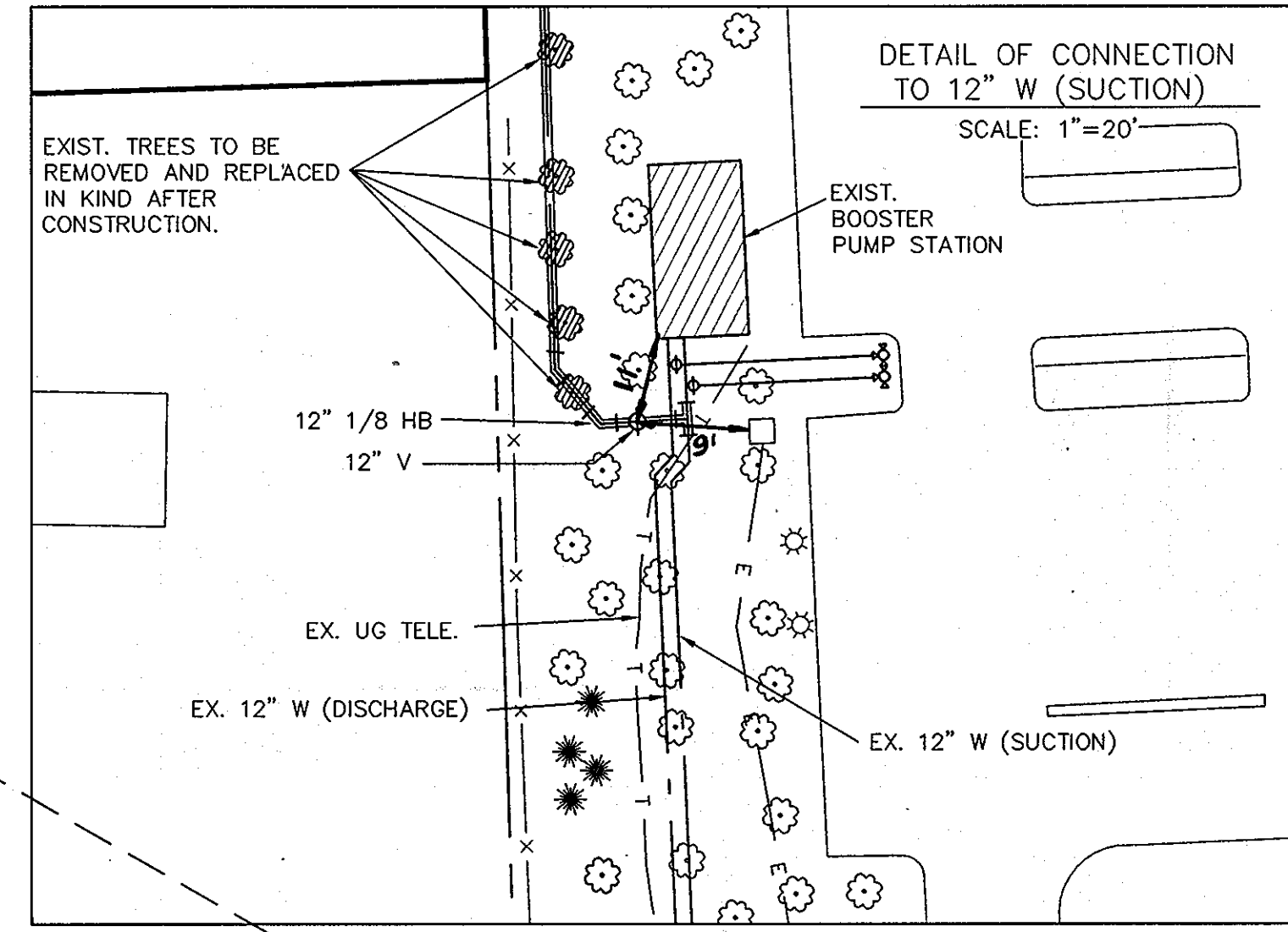
**TITLE SHEET**  
 SCALE: AS SHOWN  
 600' SCALE MAP NO. 46 BLOCK NO. 4

**MAPLE LAWN FARMS**  
 BUSINESS DISTRICT - AREA 1  
 PARCELS C-1 & C-2 AND OPEN LOTS 1 & 2, MAPLE LAWN BOULEVARD  
 HOWARD COUNTY, MARYLAND  
 ELECTION DISTRICT No. 5  
**CONTRACT No. 24-4062-D**

SCALE AS SHOWN  
 SHEET 1 OF 7



MATCH LINE "A-A"  
See sheet 3 of 6



OPEN SPACE  
LOT 1

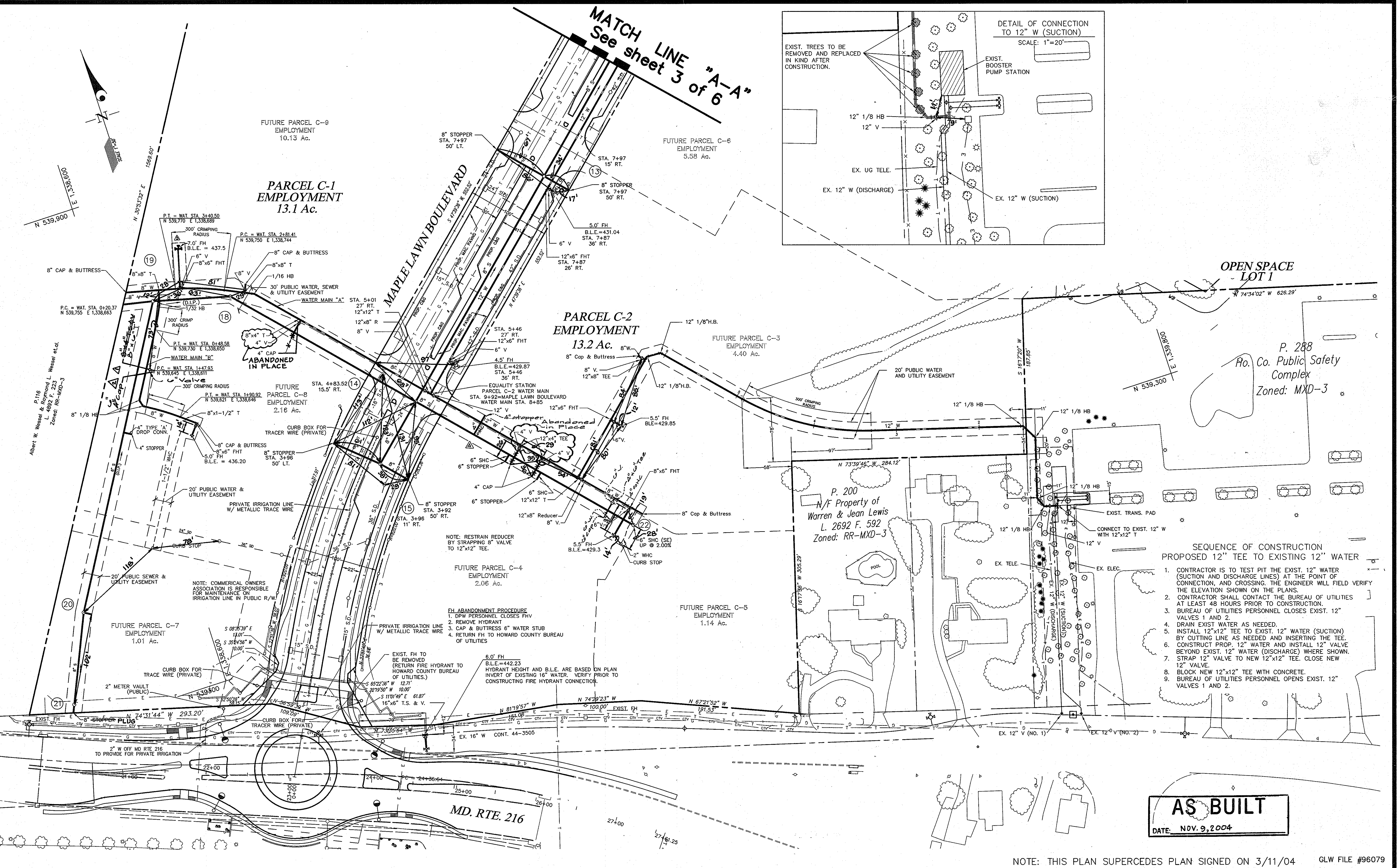
P. 288  
Ho. Co. Public Safety  
Complex  
Zoned: MXD-3

P. 200  
N/F Property of  
Warren & Jean Lewis  
L. 2692 F. 592  
Zoned: RR-MXD-3

- SEQUENCE OF CONSTRUCTION  
PROPOSED 12" TEE TO EXISTING 12" WATER
1. CONTRACTOR IS TO TEST PIT THE EXIST. 12" WATER (SUCTION AND DISCHARGE LINES) AT THE POINT OF CONNECTION, AND CROSSING THE ENGINEER WILL FIELD VERIFY THE ELEVATION SHOWN ON THE PLANS.
  2. CONTRACTOR SHALL CONTACT THE BUREAU OF UTILITIES AT LEAST 48 HOURS PRIOR TO CONSTRUCTION.
  3. BUREAU OF UTILITIES PERSONNEL CLOSES EXIST. 12" VALVES 1 AND 2.
  4. DRAIN EXIST WATER AS NEEDED.
  5. INSTALL 12"x12" TEE TO EXIST. 12" WATER (SUCTION) BY CUTTING LINE AS NEEDED AND INSERTING THE TEE.
  6. CONSTRUCT PROP. 12" WATER AND INSTALL 12" VALVE BEYOND EXIST. 12" WATER (DISCHARGE) WHERE SHOWN.
  7. STRAP 12" VALVE TO NEW 12"x12" TEE. CLOSE NEW 12" VALVE.
  8. BLOCK NEW 12"x12" TEE WITH CONCRETE.
  9. BUREAU OF UTILITIES PERSONNEL OPENS EXIST. 12" VALVES 1 AND 2.

**AS BUILT**  
DATE: NOV. 9, 2004

NOTE: THIS PLAN SUPERCEDES PLAN SIGNED ON 3/11/04 GLW FILE #96079



L:\CADD\DRAWINGS\96079\Phase 1 (96079)\WS REDLINE\FINAL (BLACK)\96079WS2-REDLINE.dwg 07/22/2004 07:57:36 AM EDT

DEPARTMENT OF  
PUBLIC WORKS  
HOWARD COUNTY, MARYLAND

*R. H. ...*  
CHIEF, BUREAU OF UTILITIES

DEPARTMENT OF  
PLANNING AND ZONING  
HOWARD COUNTY, MARYLAND

*...*  
CHIEF, DEVELOPMENT ENGINEERING DIVISION

**GLW GUTSCHICK LITTLE & WEBER, P.A.**  
CIVIL ENGINEERS, LAND SURVEYORS, LAND PLANNERS, LANDSCAPE ARCHITECTS  
3909 NATIONAL DRIVE - SUITE 250 - BURTONSVILLE OFFICE PARK  
BURTONSVILLE, MARYLAND 20866  
TEL: 301-421-4024 BALT: 410-880-1020 DC/VA: 301-989-2524 FAX 301-421-4186



DES: DEV	DEV	2	REVISED WATER THROUGH PARCEL C-2, ADDED WATER AND SEWER THROUGH PARCEL C-1	6-16-04
DRN: BB	dev	Δ	New originals submitted	8/3/04
CHK: CKG	dev	Δ	Provided additional 4" WHC	9/30/04
	klp	Δ	revised 4" WHC to 6" WHC	10/1/04
	klp	Δ	revised PH & Easmt	01/05/05
	klp	Δ	added 4" WHC	02/14/07
DATE: 2/03	BY	NO	REVISION	DATE

**WATER and SEWER EXTENSION  
PLAN**

600' SCALE MAP NO. 46 BLOCK NO. 4

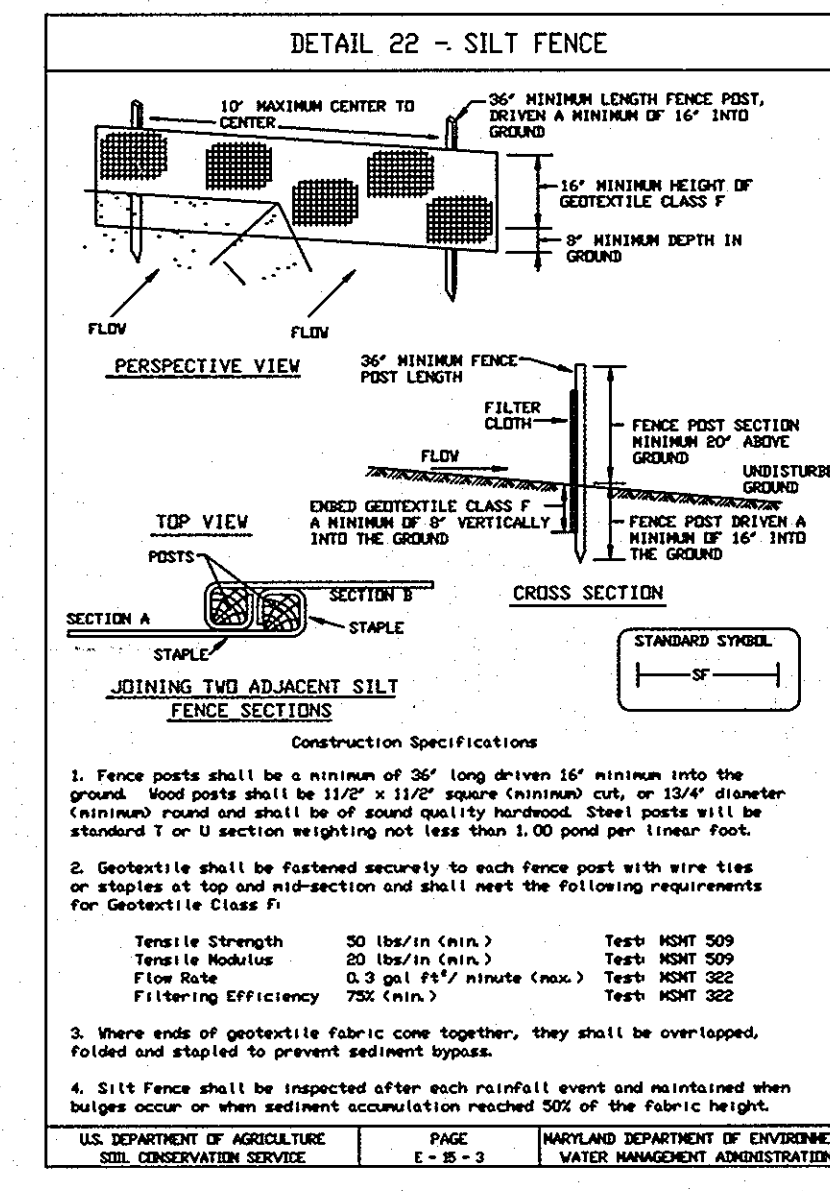
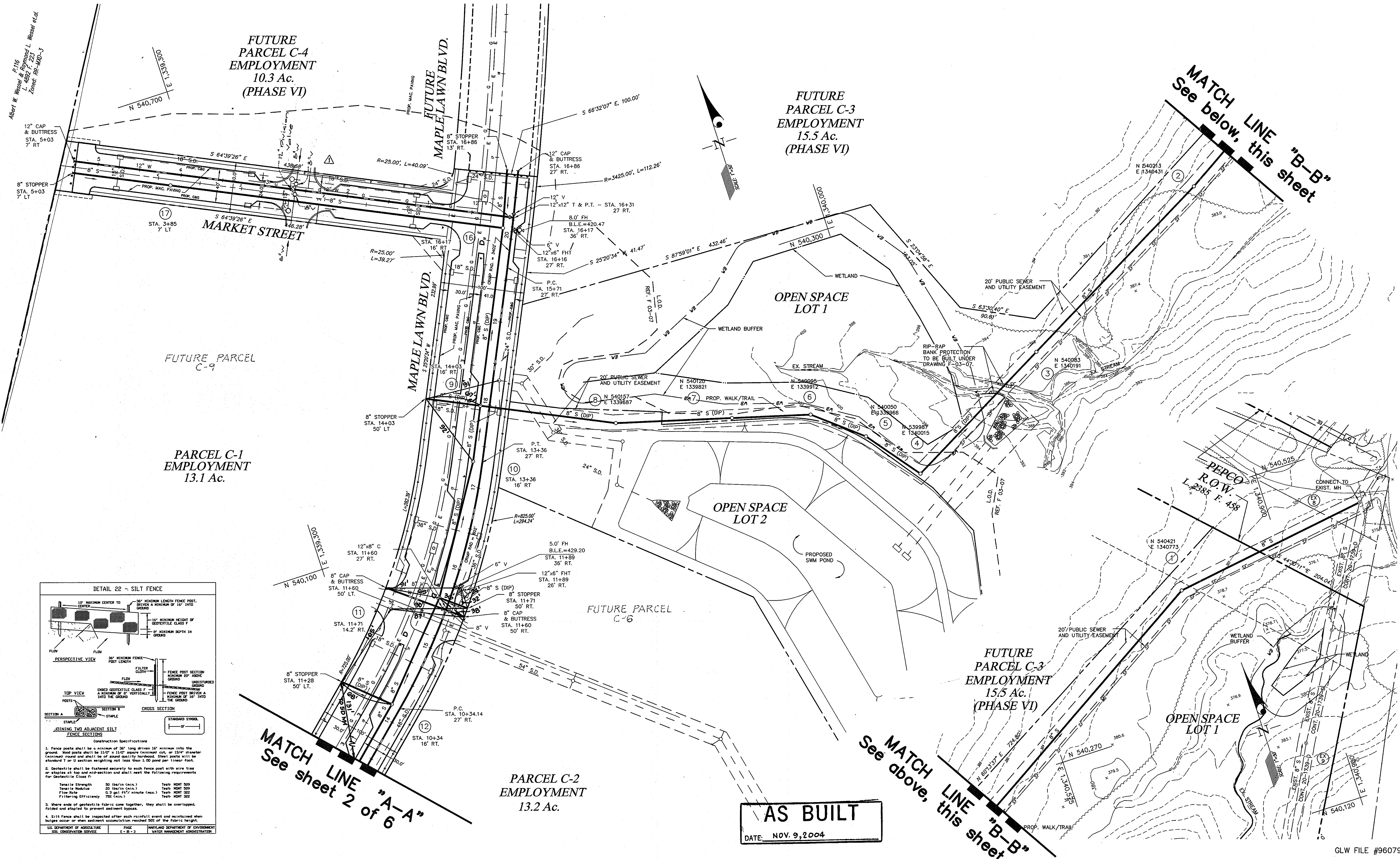
**MAPLE LAWN FARMS**  
BUSINESS DISTRICT - AREA 1  
PARCEL C-1 & C-2 AND LOTS 1 & 2,  
MAPLE LAWN BOULEVARD  
HOWARD COUNTY, MARYLAND.  
ELECTION DISTRICT No. 5  
CONTRACT No. 24-4062-D

SCALE  
AS  
SHOWN

SHEET  
2 OF 7



L:\CADD\DRAWINGS\96079\Phase 1 (96079)\WS REDLINE\FINAL (BLACK)\96079WS3-REDLINE.dwg 07/22/2004 08:01:44 AM EDT



**AS BUILT**  
DATE: NOV. 9, 2004

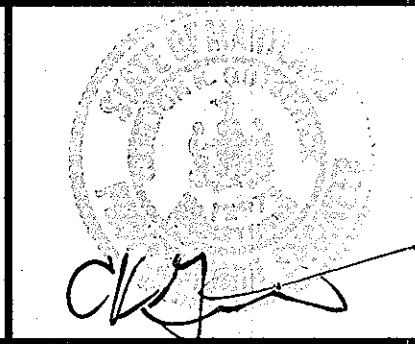
DEPARTMENT OF PUBLIC WORKS  
HOWARD COUNTY, MARYLAND

*[Signature]*  
CHIEF, BUREAU OF UTILITIES

DEPARTMENT OF PLANNING AND ZONING  
HOWARD COUNTY, MARYLAND

*[Signature]*  
CHIEF, DEVELOPMENT ENGINEERING DIVISION

**GLW GUTSCHICK LITTLE & WEBER, P.A.**  
CIVIL ENGINEERS, LAND SURVEYORS, LAND PLANNERS, LANDSCAPE ARCHITECTS  
3909 NATIONAL DRIVE - SUITE 250 - BURTONSVILLE OFFICE PARK  
BURTONSVILLE, MARYLAND 20866  
TEL: 301-421-4024 BALT: 410-661-1820 DC/VA: 301-385-2524 FAX: 301-421-4186



DES: DEV	New originals submitted	8/1/03
DRN: BB		
CHK: CKG		
DATE: 02/03	BY: NO	REVISION: Reflect changes in Market st. Under 24" 401-B realine
		DATE: 12-14-12

WATER and SEWER EXTENSION PLAN

600' SCALE MAP NO. 46 BLOCK NO. 4

MAPLE LAWN FARMS  
BUSINESS DISTRICT - AREA 1  
PARCELS C-1 & C-2 AND OPEN LOTS 1 & 2,  
MAPLE LAWN BOULEVARD  
HOWARD COUNTY, MARYLAND  
ELECTION DISTRICT No. 5  
CONTRACT No. 24-4062-D

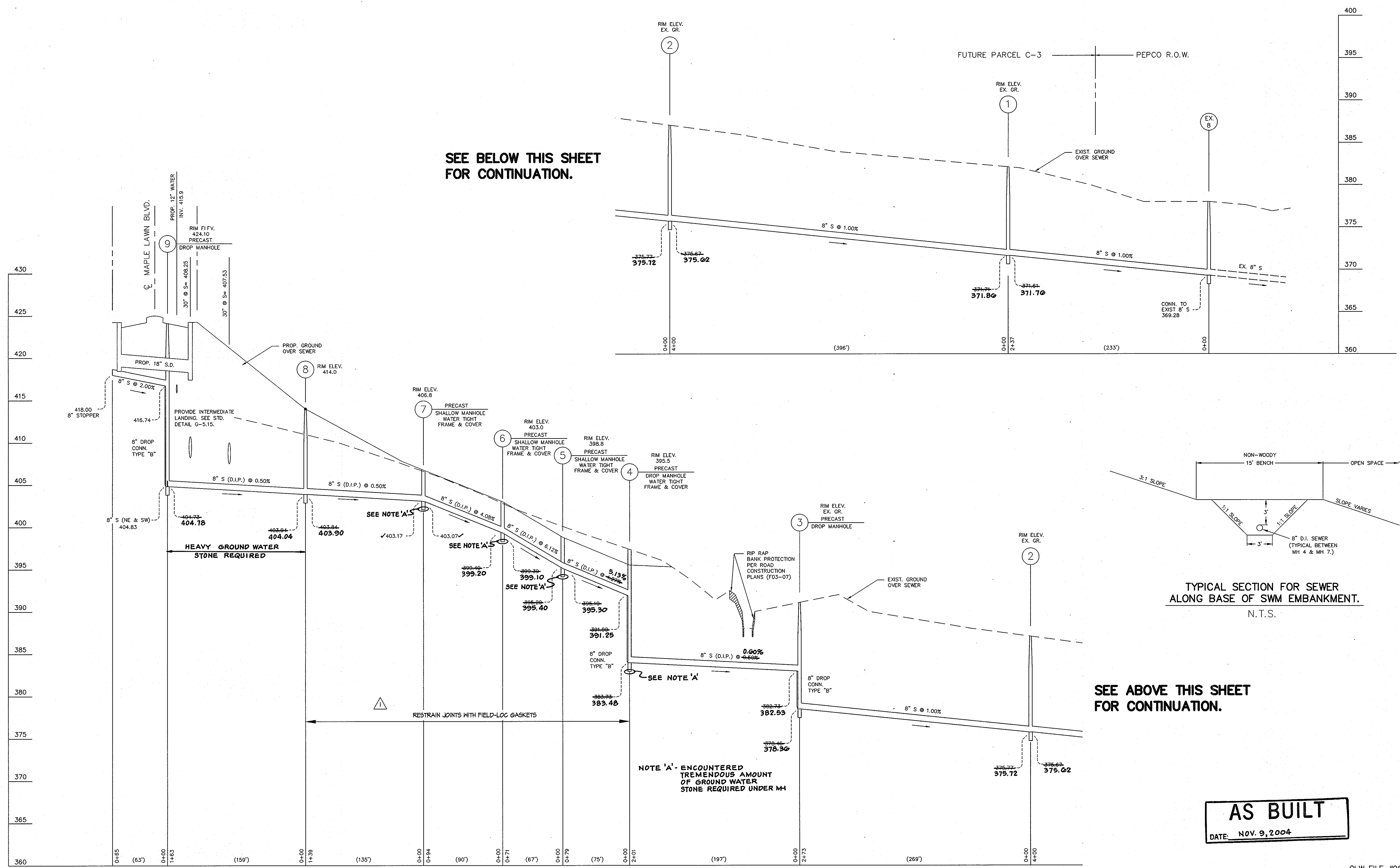
SCALE AS SHOWN  
SHEET 3 OF 7

GLW FILE #96079

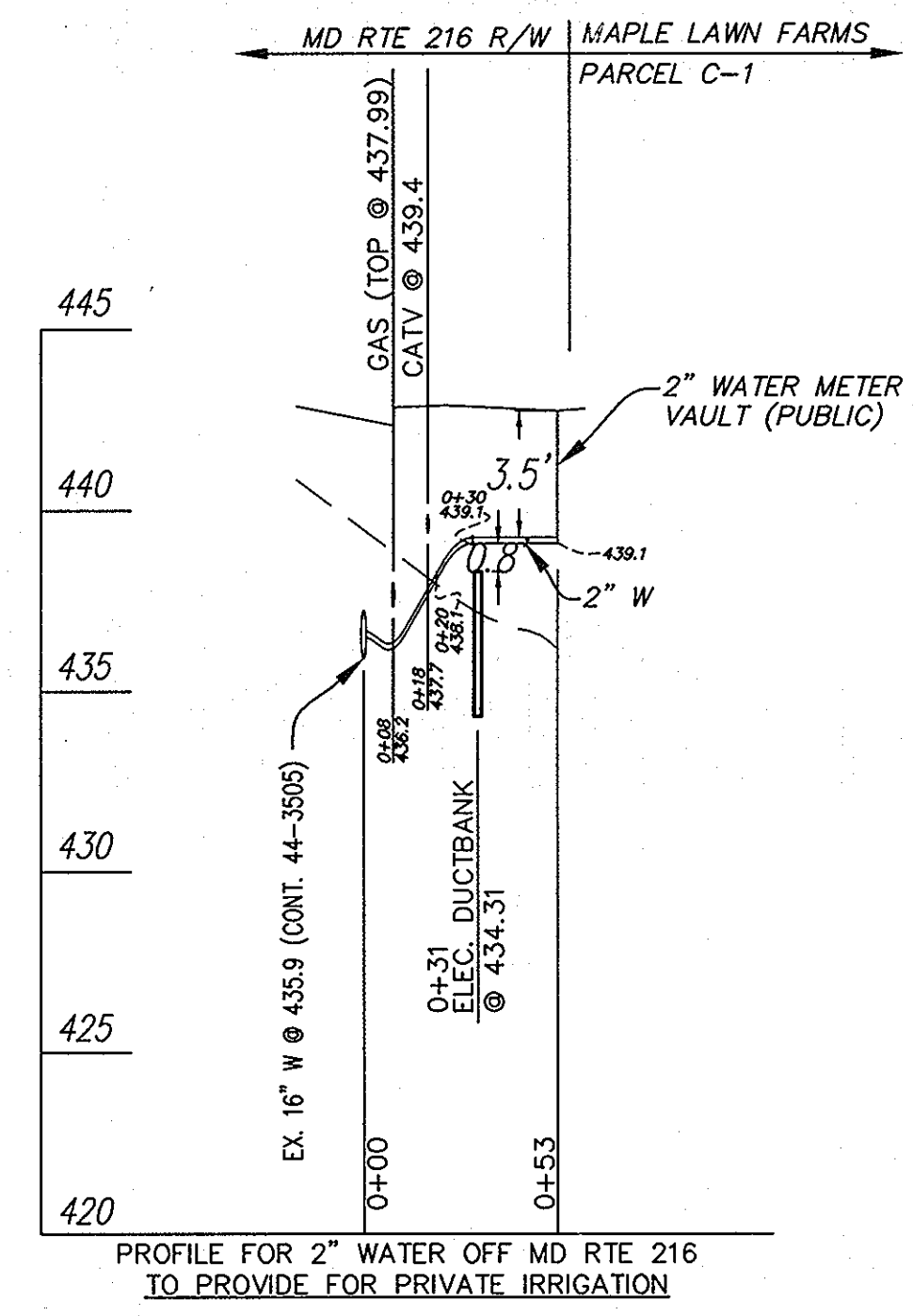
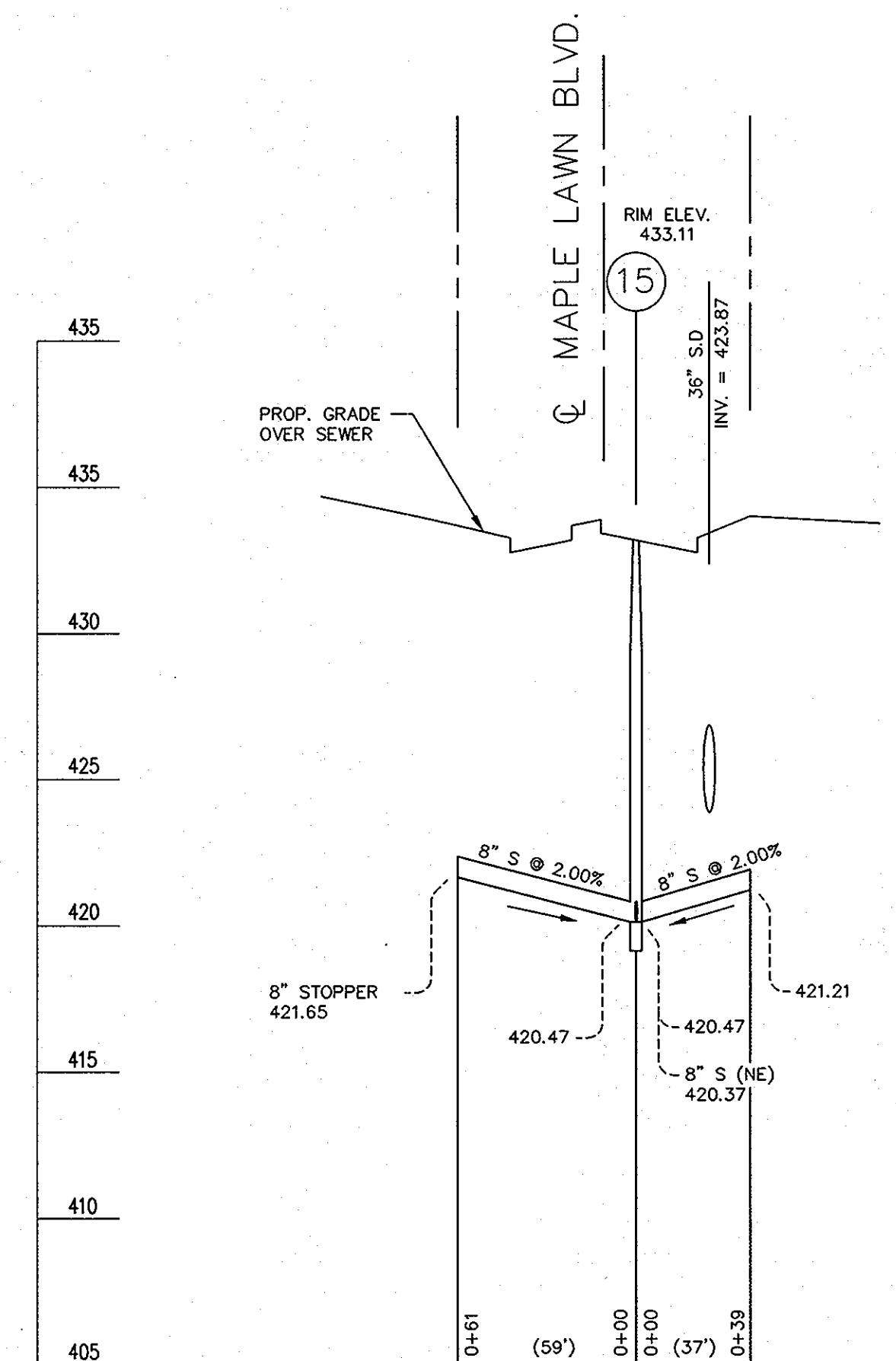
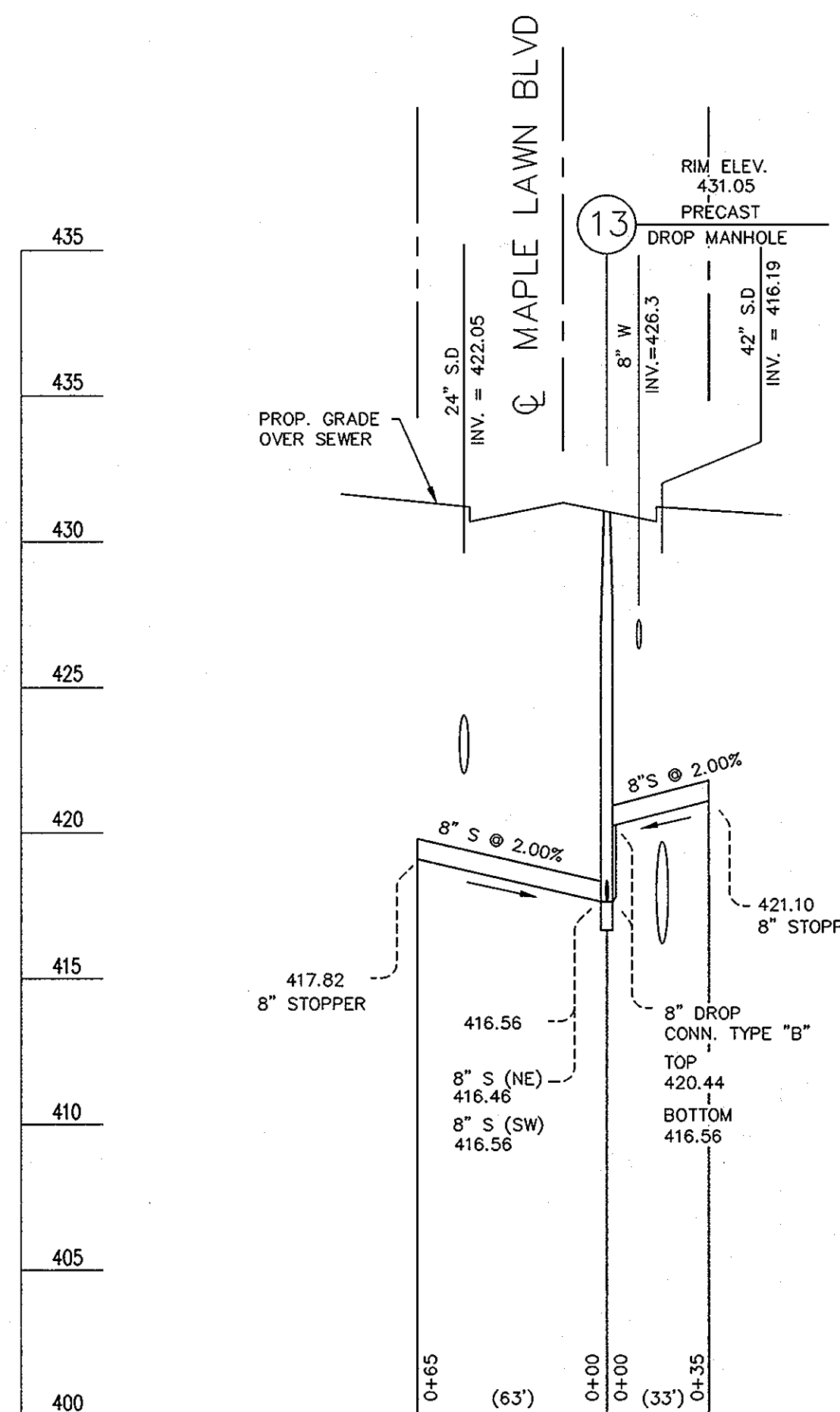
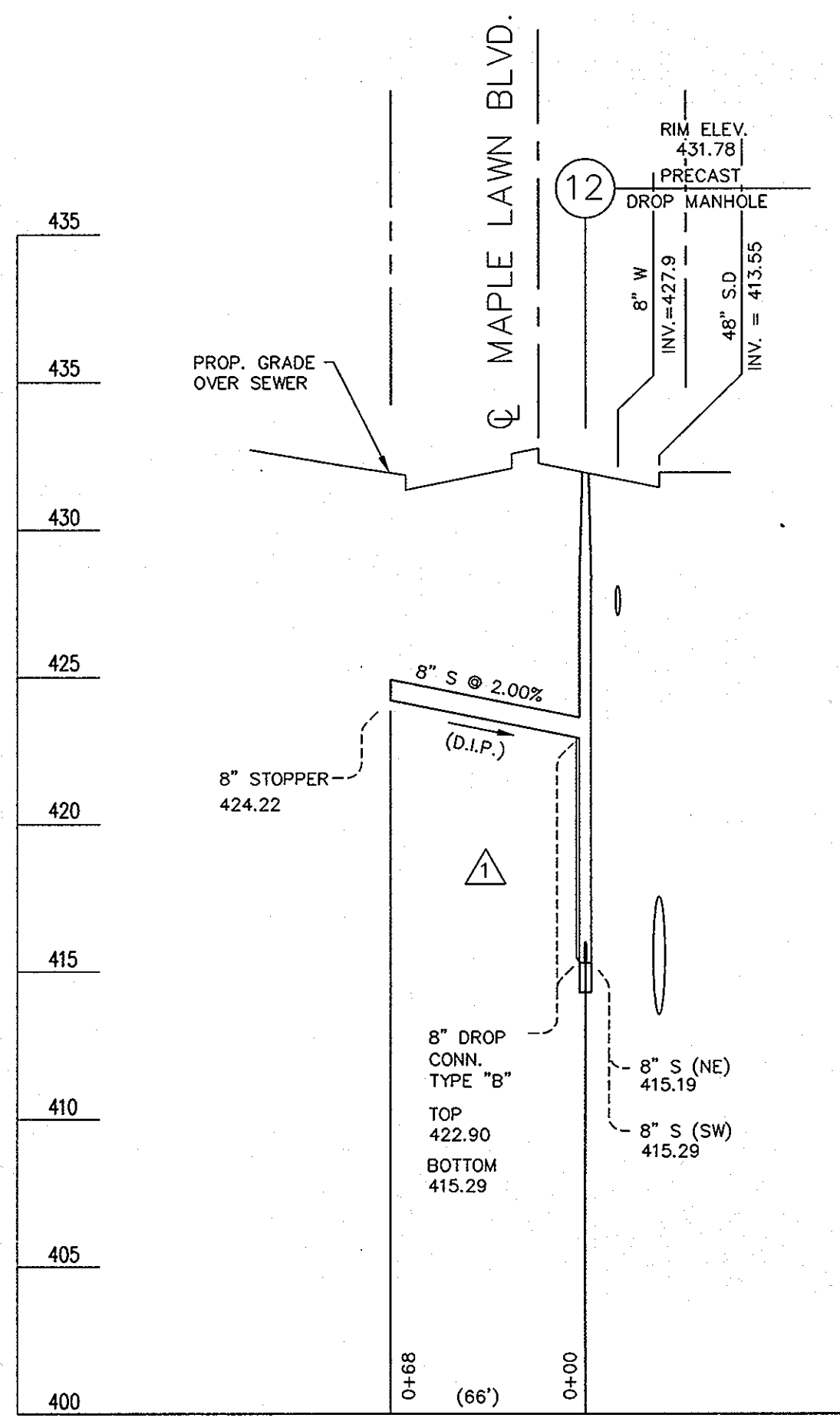




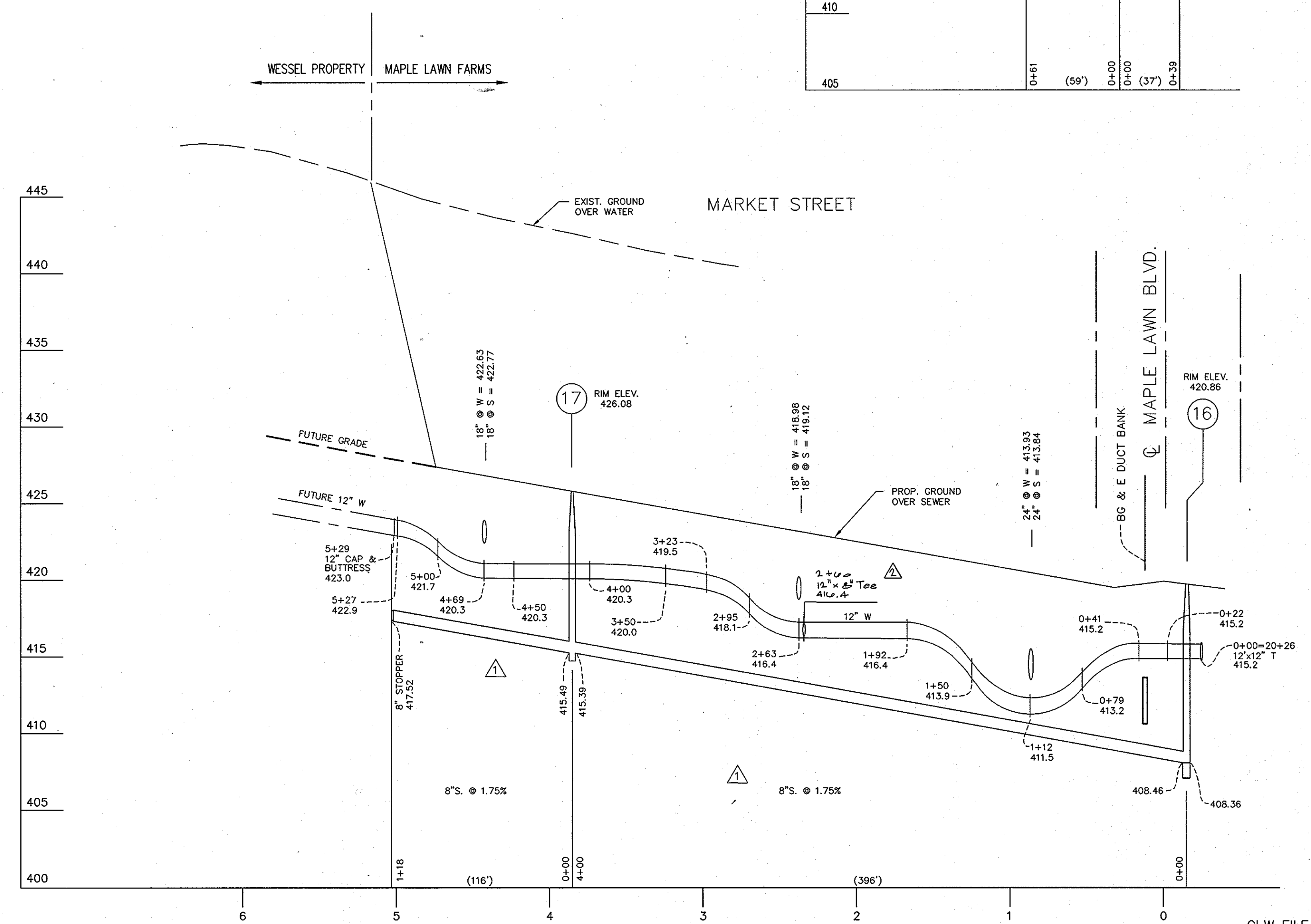
L:\CADD\DRAWINGS\96079\Phase 1 (96079)\WS REDLINE\FINAL (BLACK)\96079WS5-REDLINE.dwg 07/22/2004 08:05:59 AM EDT



L:\CADD\DRAWINGS\96079\Phase 1 (96079)\WS REDLINE\FINAL (BLACK)\96079WS6-REDLINE.dwg 07/22/2004 08:06:51 AM EDT



**AS BUILT**  
DATE: NOV. 9, 2004



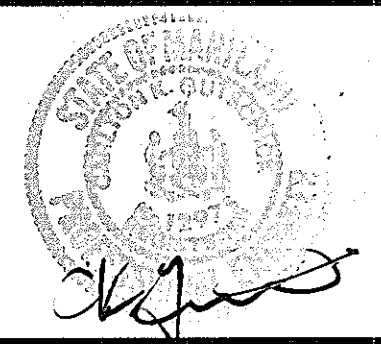
NOTE: THESE PLANS SUPERCEDE PLANS SIGNED ON 3/11/03.

GLW FILE #96079

DEPARTMENT OF PUBLIC WORKS  
HOWARD COUNTY, MARYLAND  
*John B. ...*  
CHIEF, BUREAU OF UTILITIES

DEPARTMENT OF PLANNING AND ZONING  
HOWARD COUNTY, MARYLAND  
*...*  
CHIEF, DEVELOPMENT ENGINEERING DIVISION

**GLW GUTSCHICK LITTLE & WEBER, P.A.**  
CIVIL ENGINEERS, LAND SURVEYORS, LAND PLANNERS, LANDSCAPE ARCHITECTS  
3909 NATIONAL DRIVE - SUITE 250 - BURTONSVILLE OFFICE PARK  
BURTONSVILLE, MARYLAND 20866  
TEL: 301-421-4024 BALT: 410-881-1820 DC/VA: 301-588-2524 FAX: 301-421-4186

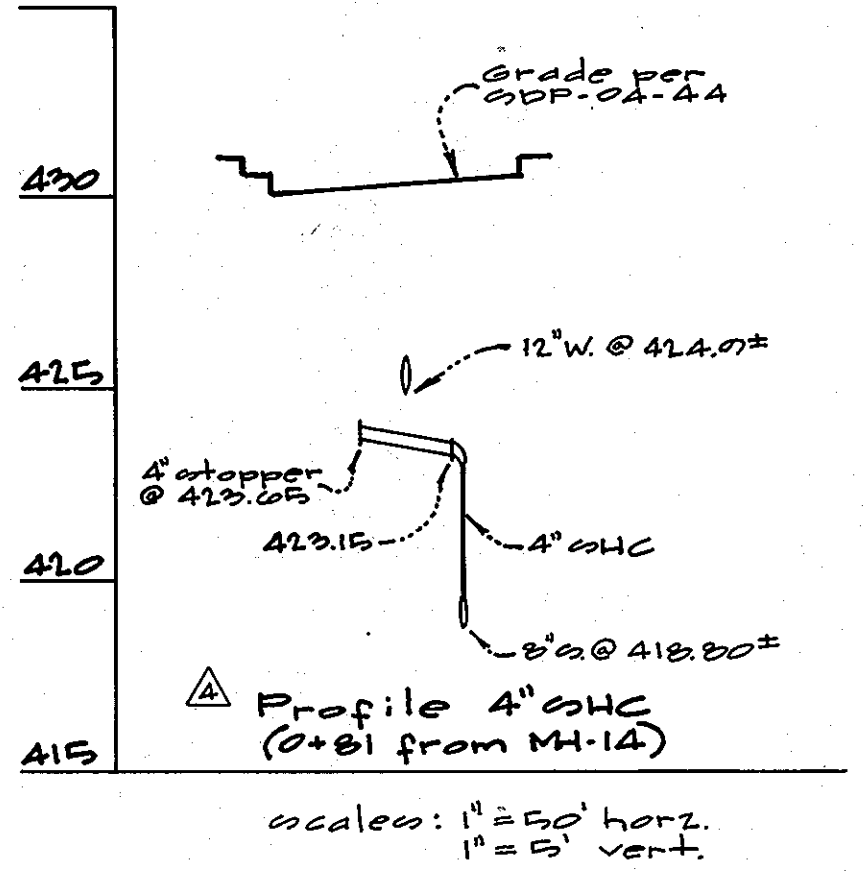
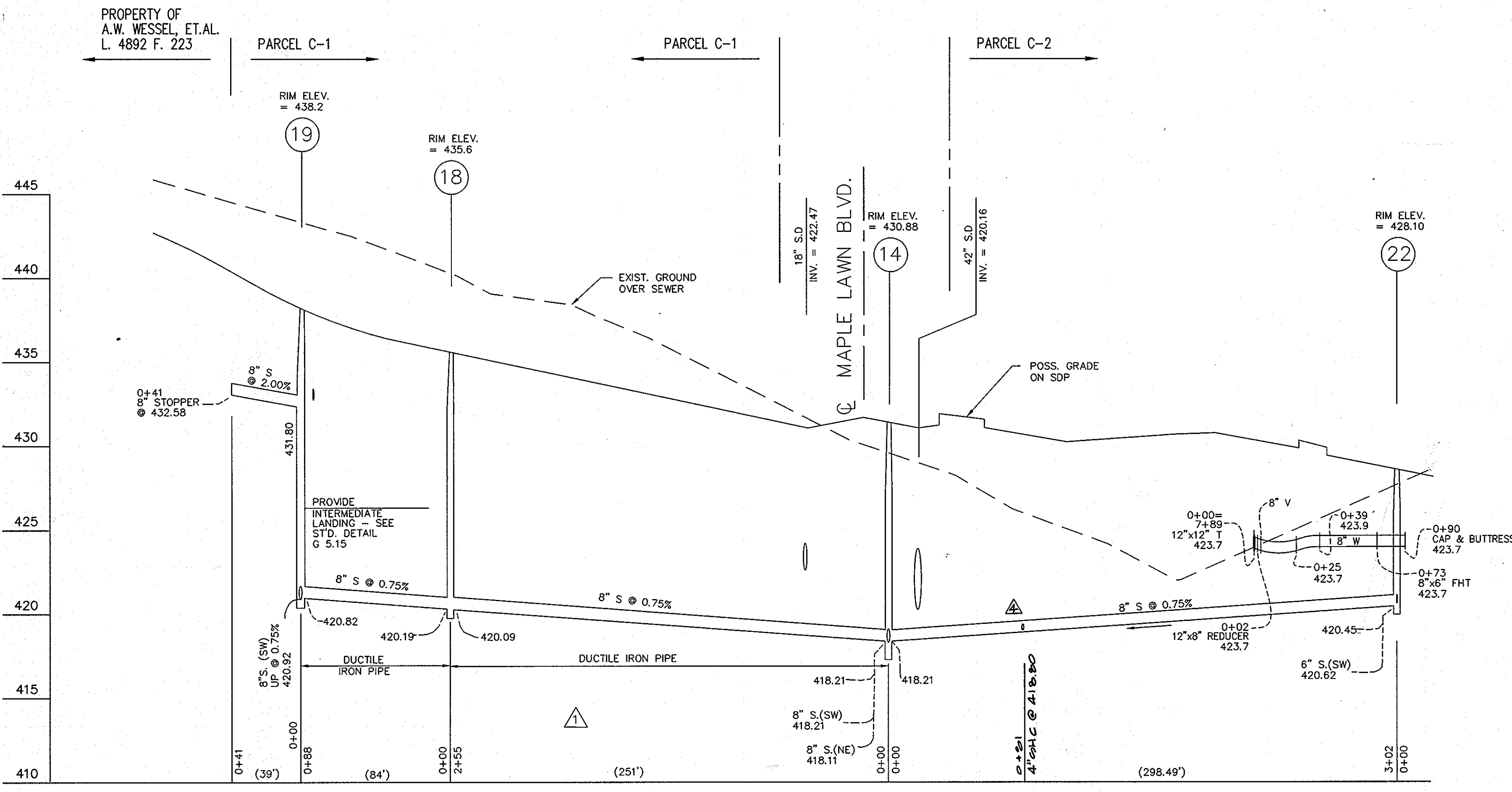
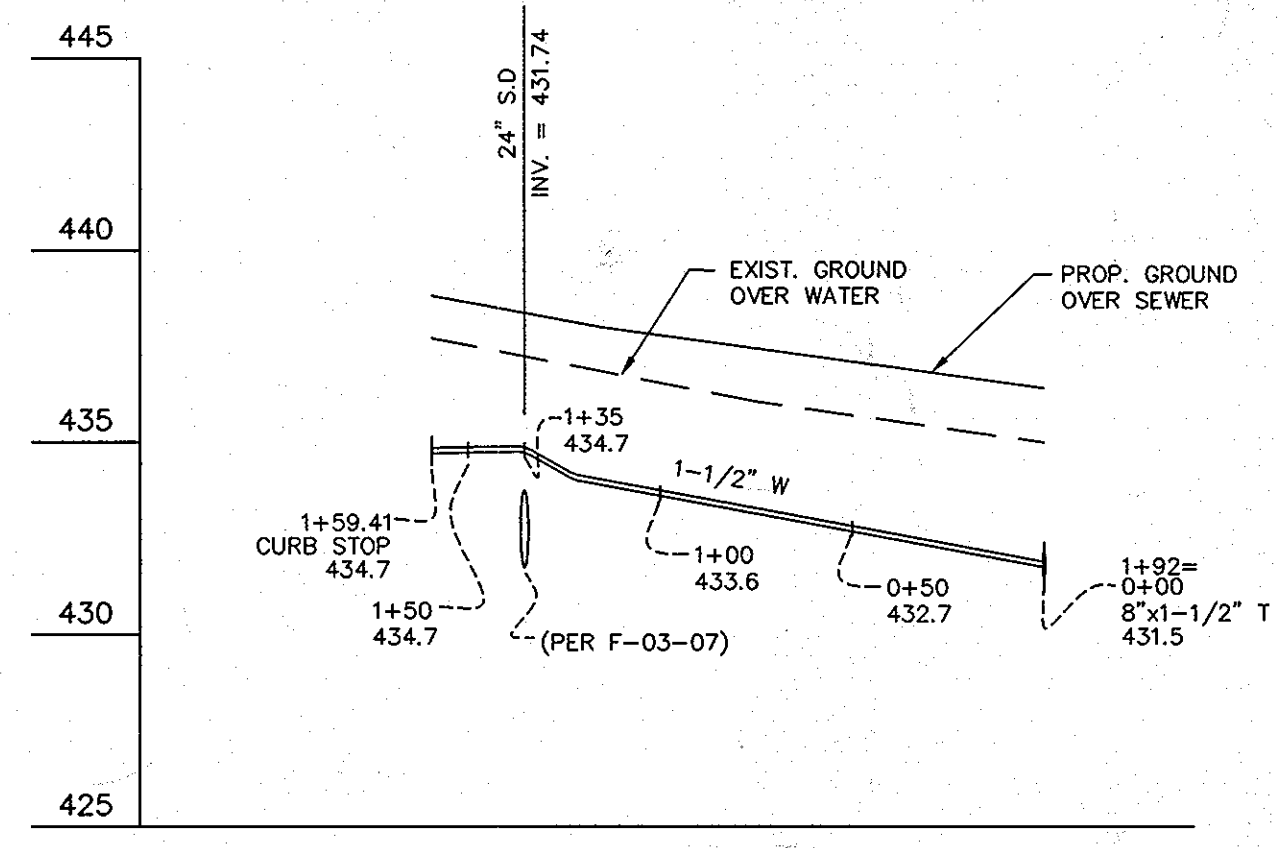
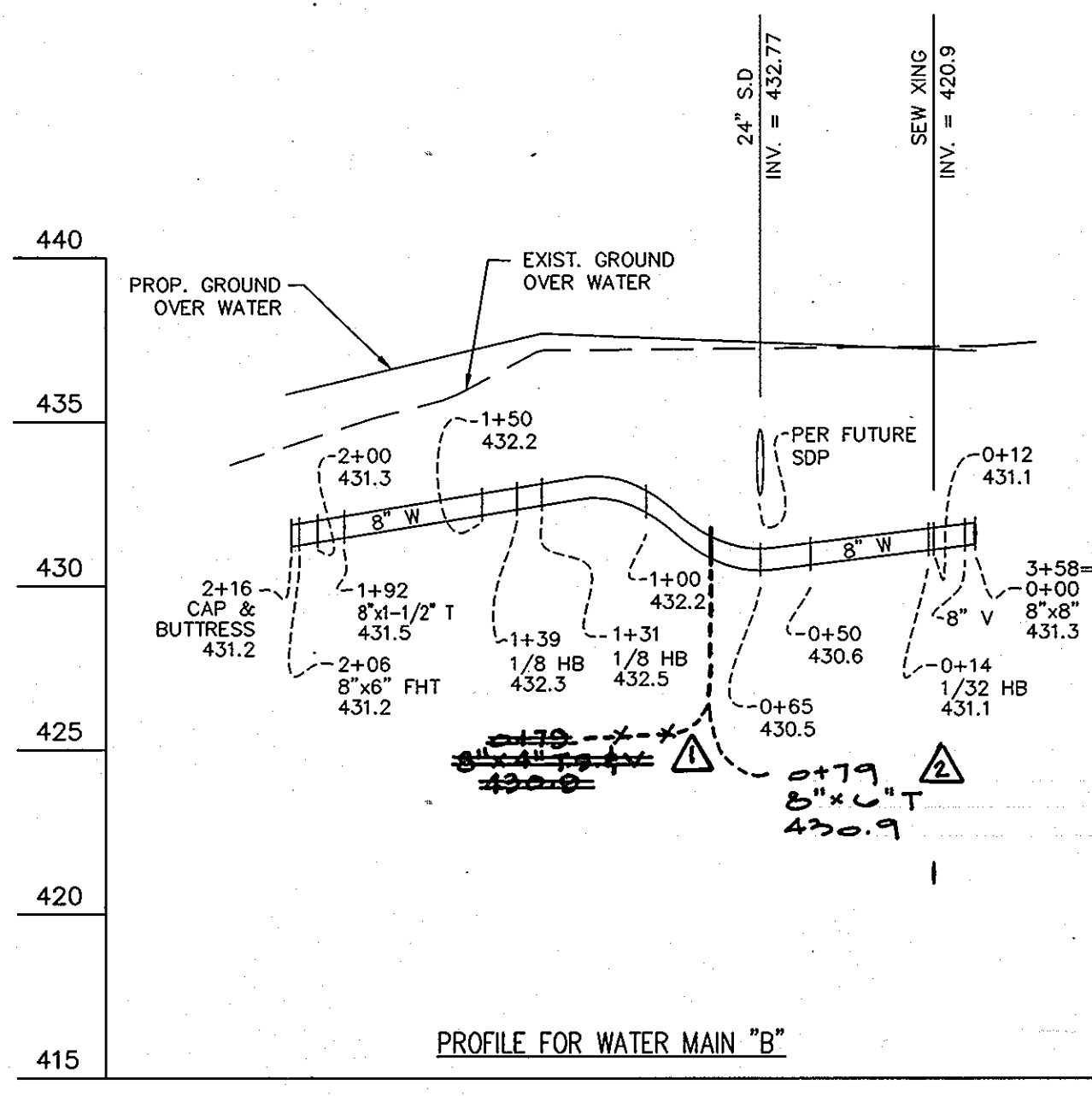
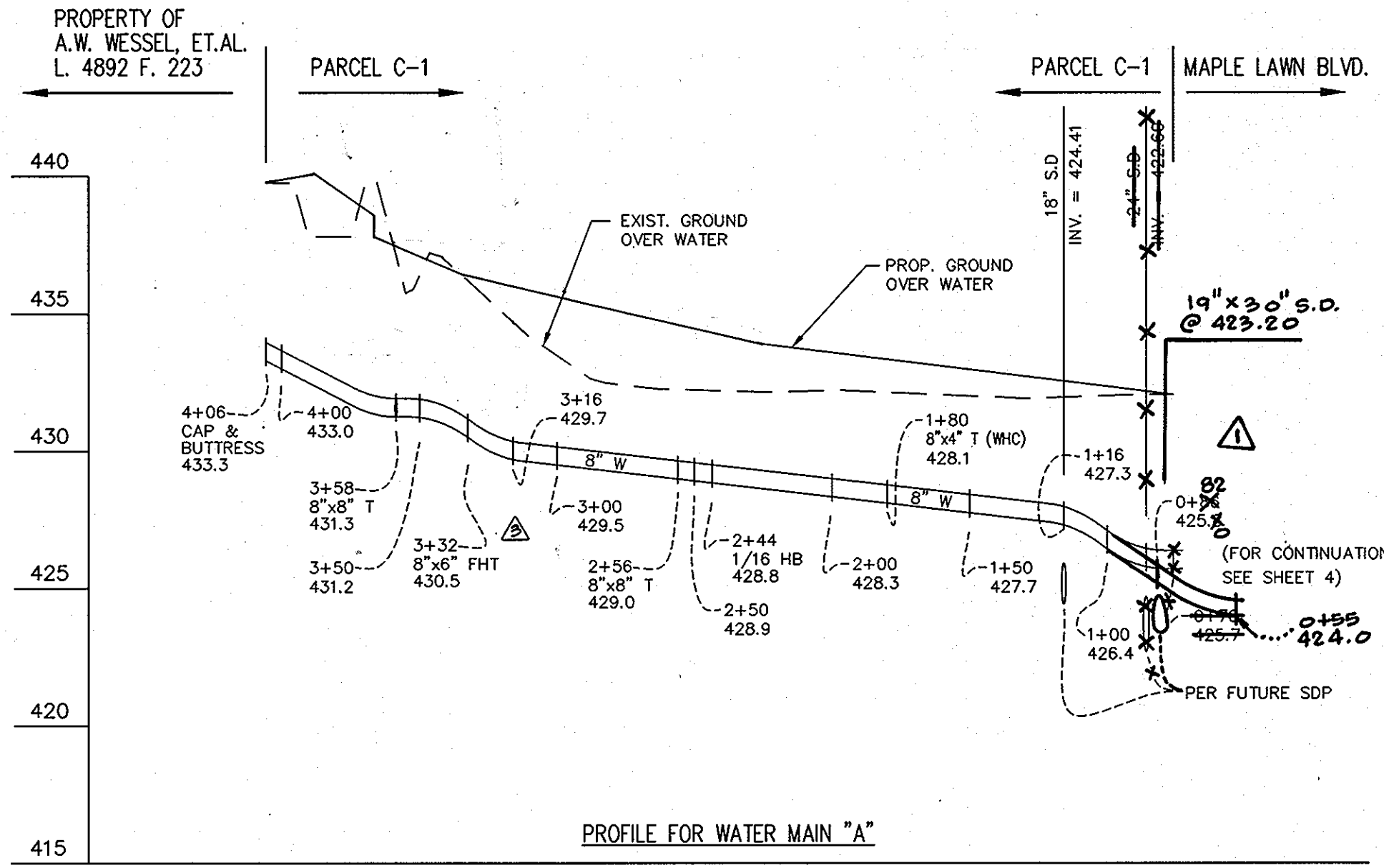
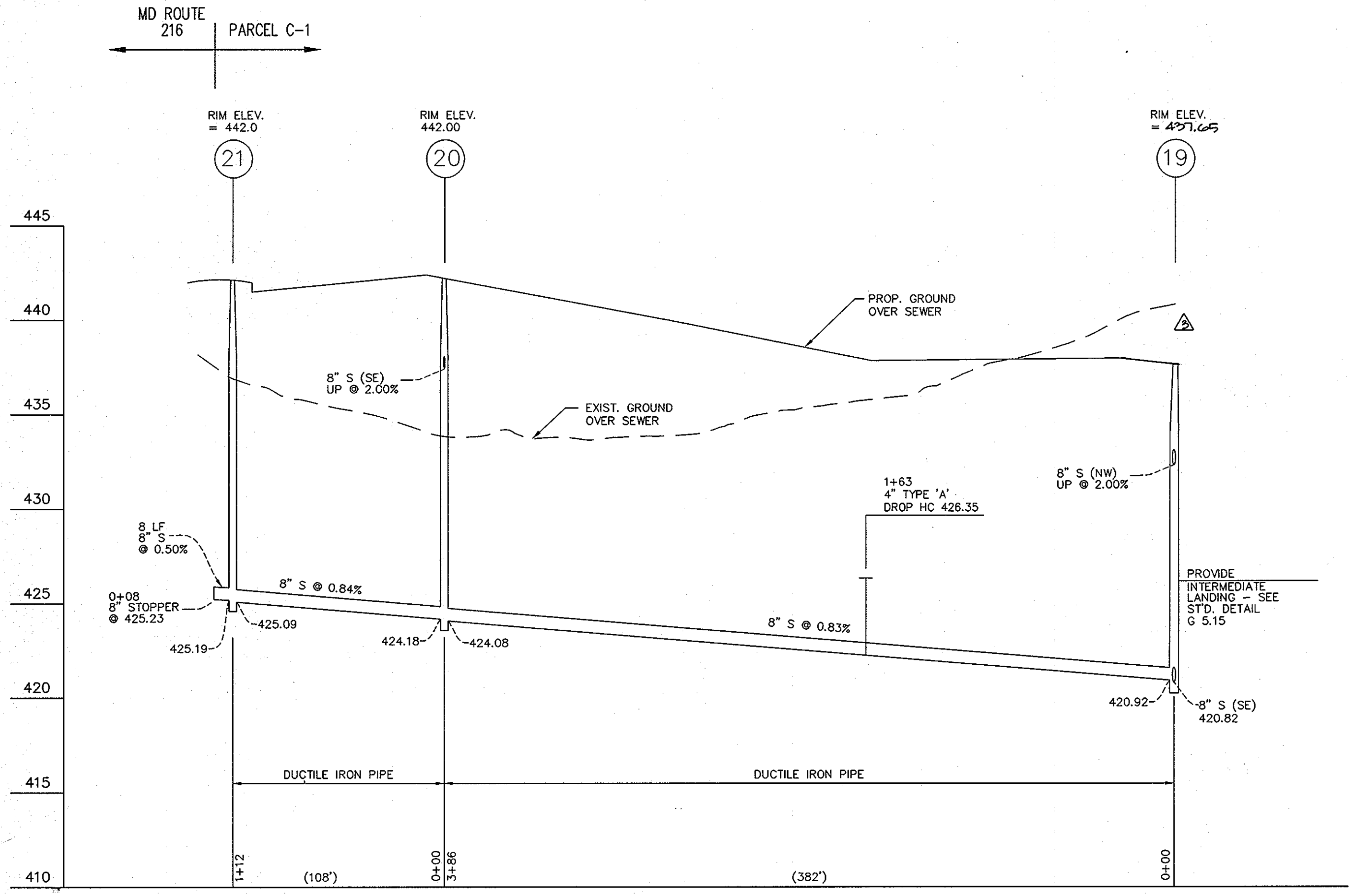


DES: DEV		New originals submitted	8/2/04
DRN: BB			
CHK: CKG			
DATE: 02/03	BY	NO	REVISION
			DATE

WATER and SEWER EXTENSION  
PROFILE  
600' SCALE MAP NO. 46 BLOCK NO. 4

MAPLE LAWN FARMS  
BUSINESS DISTRICT - AREA 1  
PARCELS C-1 & C-2 AND OPEN LOTS 1 & 2,  
MAPLE LAWN BOULEVARD  
HOWARD COUNTY, MARYLAND  
ELECTION DISTRICT No. 5  
CONTRACT No. 24-4062-D

SCALE AS SHOWN  
SHEET 6 OF 7



**AS BUILT**  
DATE: NOV. 9, 2004

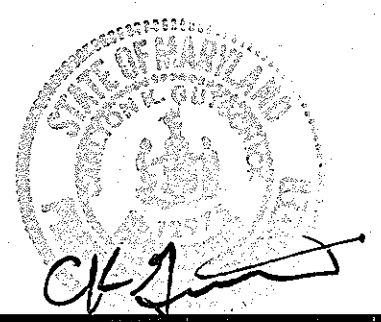
NOTE:  
THESE PLANS SUPERCEDE PLANS SIGNED ON 3/11/03.

L:\CADD\DRAWINGS\96079\Phase 1 (96079)\WS REDLINE\FINAL (BLACK)\96079WS7.DWG 07/22/2004 08:27:38 AM EDT

DEPARTMENT OF PUBLIC WORKS  
HOWARD COUNTY, MARYLAND  
Ruth Beaman 8-20-04  
CHIEF, BUREAU OF UTILITIES DATE

DEPARTMENT OF PLANNING AND ZONING  
HOWARD COUNTY, MARYLAND  
[Signature] 8/20/04  
CHIEF, DEVELOPMENT ENGINEERING DIVISION DATE

GLW GUTSCHICK LITTLE & WEBER, P.A.  
CIVIL ENGINEERS, LAND SURVEYORS, LAND PLANNERS, LANDSCAPE ARCHITECTS  
3909 NATIONAL DRIVE - SUITE 250 - BURTONSVILLE OFFICE PARK  
BURTONSVILLE, MARYLAND 20866  
TEL: 301-421-4024 BALT. 410-583-1820 DC/VA 301-585-2524 FAX: 301-421-4186



DES: DEV	dev	Δ	New originals submitted	8/3/04
DRN: BB	dev	Δ	Revise profile to provide additional 4" WHC and to reflect field changes to resolve conflict.	9/30/04
CHK: CKG	klp	Δ	revise profile to provide	2/1/05
	klp	Δ	revise elev. mh top elev. & file @ 24x24 WMA	6/10/05
	klp	Δ	added 4" SHC and corresponding prop.	5/24/07
DATE: 02/03	BY	NO	REVISION	

WATER and SEWER EXTENSION PROFILE  
600' SCALE MAP NO. 46 BLOCK NO. 4

MAPLE LAWN FARMS  
BUSINESS DISTRICT - AREA 1  
PARCELS C-1 & C-2 AND OPEN LOTS 1 & 2,  
MAPLE LAWN BOULEVARD  
HOWARD COUNTY, MARYLAND  
ELECTION DISTRICT No. 5  
CONTRACT No. 24-4062-D

SCALE AS SHOWN  
SHEET 7 OF 7