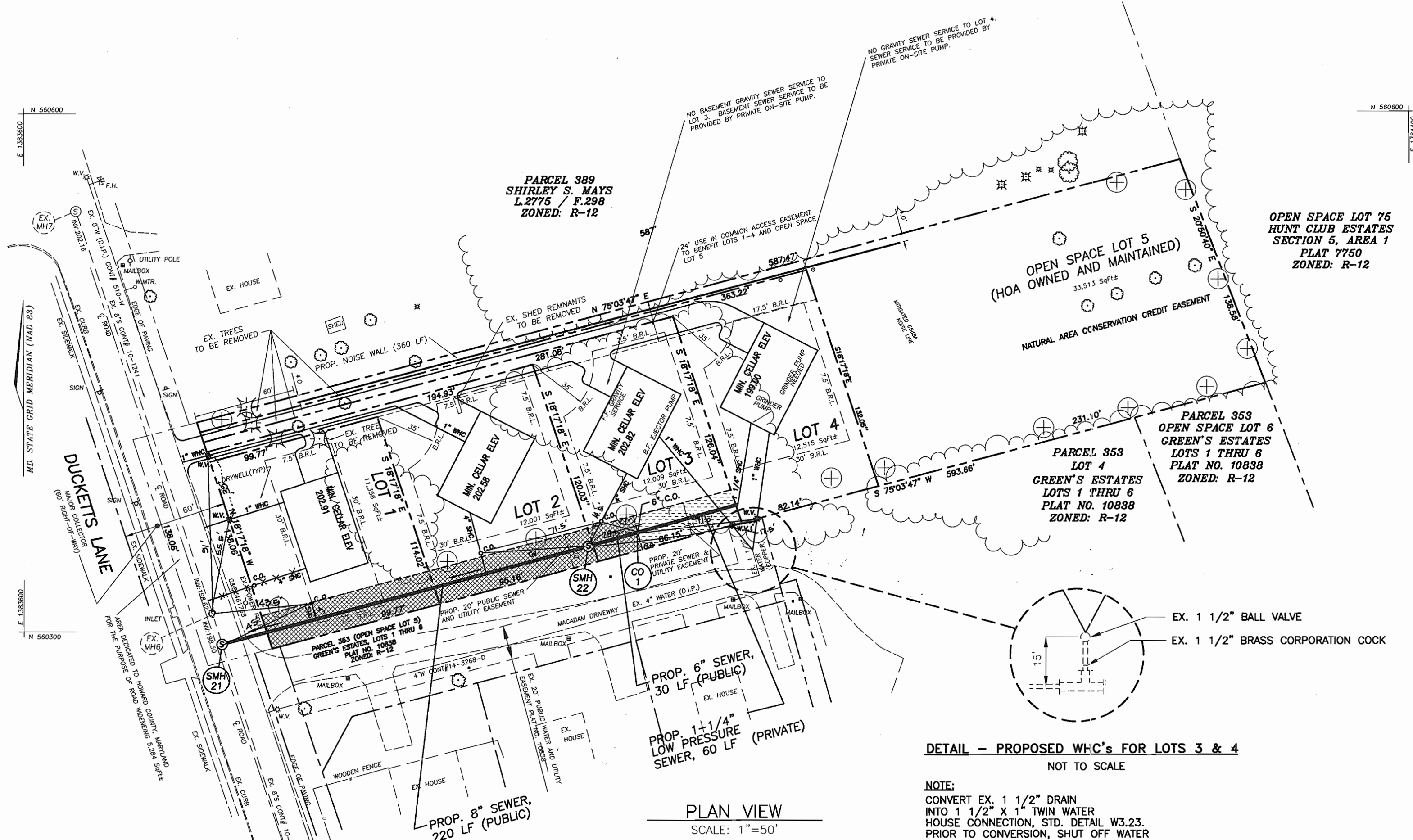
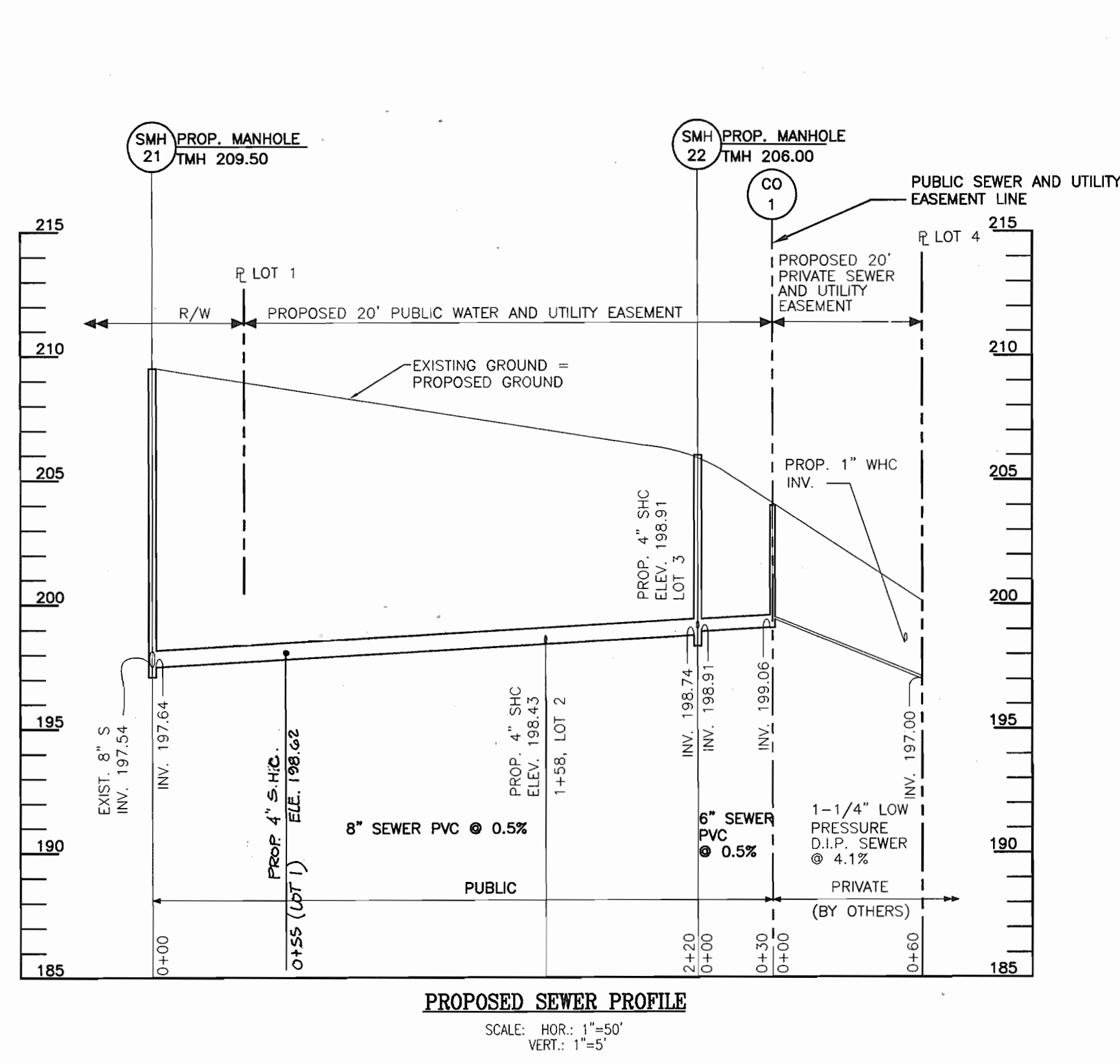


PUBLIC SEWER PLAN WHITEHEAD PROPERTY LOTS 1-4 AND OPEN SPACE LOT 5 CONTRACT NO. 14-4057-D

SEWER HOUSE CONNECTIONS		
LOT #	TYPE OF CONNECTION	INVERT AT MAIN
1	SHC	198.62
2	SHC	198.43
3	SHC	198.91
4	PRESSURE SHC	199.16



LEGEND

Direction of Flow

Existing Tree Line

Existing Sanitary Sewer

Proposed Sanitary Sewer

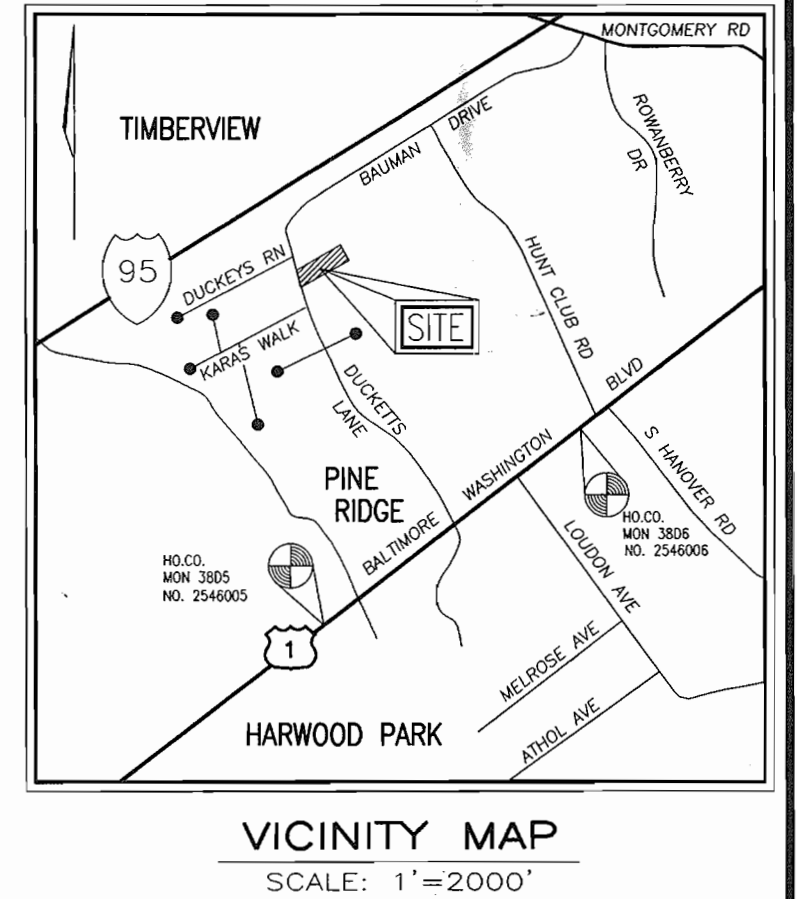
Existing Water Main

Proposed Tree

BENCHMARKS

HOWARD COUNTY CONTROL TRAVERSE NO. 2546005
N 558378.575 E 1386524.158 ELEV. 193.726

HOWARD COUNTY CONTROL TRAVERSE NO. 2546006
N 557155.459 E 1384992.262 ELEV. 175.228



- GENERAL NOTES**
- PART I**
- APPROXIMATE LOCATION OF EXISTING MAINS ARE SHOWN. THE CONTRACTOR SHALL TAKE ALL NECESSARY PRECAUTIONS TO PROTECT EXISTING MAINS AND SERVICES AND MAINTAIN UNINTERRUPTED SUPPLY. ANY DAMAGE INCURRED SHALL BE REPAIRED IMMEDIATELY TO THE SATISFACTION OF THE ENGINEER AT THE CONTRACTOR'S EXPENSE.
 - ALL HORIZONTAL CONTROLS ARE BASED ON MARYLAND STATE COORDINATES, NAD 83/91.
 - ALL VERTICAL CONTROLS ARE BASED ON NAVD 88.
 - ALL PIPE ELEVATIONS SHOWN ARE INVERT ELEVATIONS UNLESS OTHERWISE NOTED ON PLANS.
 - CLEAR ALL UTILITIES BY A MINIMUM OF 12". CLEAR ALL POLES BY 5'-0" MINIMUM OR TUNNEL AS REQUIRED UNLESS OTHERWISE NOTED. THE OWNER HAS CONTACTED THE UTILITY COMPANIES AND HAS MADE ARRANGEMENTS FOR BRACING OF POLES AS SHOWN ON DRAWINGS. IN THE EVENT THE CONTRACTOR'S WORK REQUIRES THE BRACING OF ADDITIONAL POLES, ANY COST INCURRED BY THE OWNER FOR BRACING OF ADDITIONAL POLES OR DAMAGES SHALL BE DEDUCTED FROM MONIES OWED TO THE CONTRACTOR. THE CONTRACTOR SHALL COORDINATE WITH THE UTILITY COMPANIES TO SCHEDULE THE BRACING OF THE POLES.
 - FOR DETAILS NOT SHOWN ON THE DRAWINGS, AND FOR MATERIALS AND CONSTRUCTION METHODS USE HOWARD COUNTY DESIGN MANUAL, VOLUME IV, STANDARD SPECIFICATIONS AND DETAILS FOR CONSTRUCTION (LATEST EDITION). THE CONTRACTOR SHALL HAVE A COPY OF VOLUME IV ON THE JOB.
 - WHERE TEST PITS HAVE BEEN MADE ON EXISTING UTILITIES, THEY ARE NOTED BY THE SYMBOL AT THE LOCATIONS OF THE TEST PITS. A NOTE OR NOTES CONTAINING THE RESULTS OF THE TEST PIT OR PITS IS INCLUDED ON THE DRAWINGS. EXISTING UTILITIES IN THE VICINITY OF THE PROPOSED WORK FOR WHICH TEST PITS HAVE NOT BEEN DUG SHALL BE LOCATED BY THE CONTRACTOR TWO WEEKS IN ADVANCE OF CONSTRUCTION OPERATIONS AT HIS OWN EXPENSE.
 - THE CONTRACTOR SHALL NOTIFY THE FOLLOWING UTILITY COMPANIES AT LEAST FIVE WORKING DAYS BEFORE STARTING WORK SHOWN ON THESE PLANS:

AT&T	1-800-252-1133
BSE (CONTRACTOR SERVICES)	410-850-4620
BGE (UNDERGROUND DAMAGE CONTROL)	410-787-9068
BUREAU OF UTILITIES	410-313-4900
COLONIAL PIPELINE CO.	410-795-1300
MISS UTILITY	1-800-257-7777
STATE HIGHWAY ADMINISTRATION	410-531-5533
VERIZON	1-800-743-0033 / 410-224-9210
 - TREES AND SHRUBS ARE TO BE PROTECTED FROM DAMAGE TO THE MAXIMUM EXTENT. TREES AND SHRUBS LOCATED WITHIN THE CONSTRUCTION STRIP ARE NOT TO BE REMOVED OR DAMAGED BY THE CONTRACTOR.
 - THE CONTRACTOR SHALL REMOVE TREES, STUMPS AND ROOTS ALONG LINE OF EXCAVATION. PAYMENT FOR SUCH REMOVAL SHALL BE INCLUDED IN THE UNIT PRICE BID FOR THE CONSTRUCTION OF THE MAIN.
 - THE CONTRACTOR SHALL NOTIFY THE BUREAU OF HIGHWAYS, HOWARD COUNTY, AT (410) 313-7450 AT LEAST FIVE WORKING DAYS BEFORE OPEN CUTTING OR BORING/JACKING OF ANY COUNTY ROAD FOR LAYING WATER/SEWER MAINS OR HOUSE CONNECTIONS. THE APPROVAL OF THESE DRAWINGS WILL CONSTITUTE COMPLIANCE WITH DPW REQUIREMENTS PER SECTION 18.114(c) OF THE HOWARD COUNTY CODE.

QUANTITIES

NAME OF UTILITY CONTRACTOR : _____

SURVEY AND DRAFTING DIVISION AS-BUILT DATE : _____

ITEMS	QUANTITIES ESTIMATED	AS-BUILT		
		QUANTITIES	TYPE	MANUFACTURER/SUPPLIER
8" PVC	220 LF	220 LF	SDR-35	DIAMOND/HUGHES
MANHOLE	2 EA	2 EA	PRECAST	ATLANTIC CONCRETE PROD.
6" PVC	30 LF	30 LF	SDR-35	DIAMOND/HUGHES
4" SHC	52 LF	65 LF	SDR-35	DIAMOND/HUGHES

Type of Building : SINGLE FAMILY

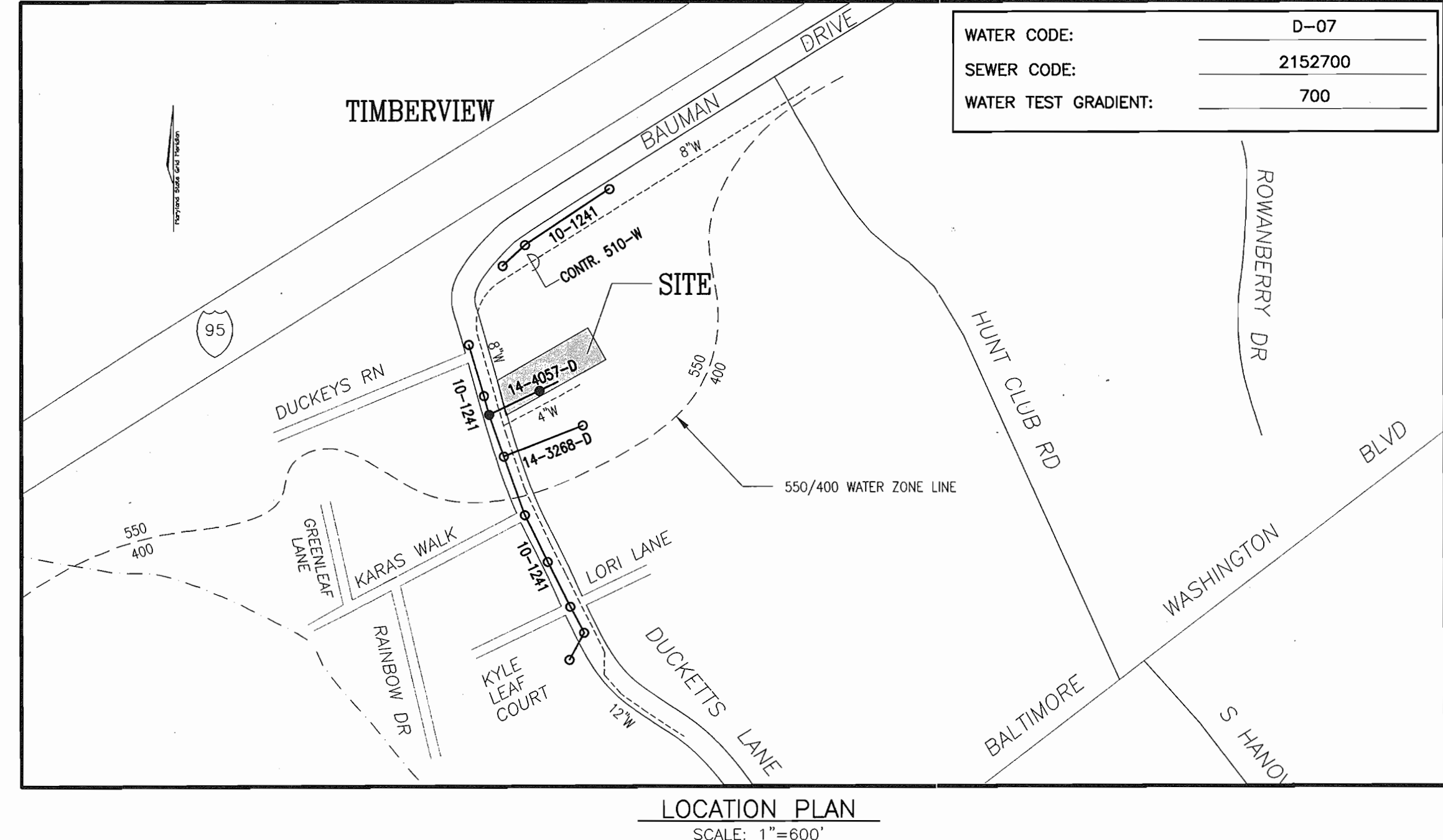
No. of Lots/Parcels : 5

No. of single Water House Connections : 4

No. of Sewer House Connections : 4

Drainage Area : PATAPSCO WATERSHED

Treatment Plant : PATAPSCO WASTEWATER



WATER CODE:	D-07
SEWER CODE:	2152700
WATER TEST GRADIENT:	700

- PART II - SEWER**
- ALL SEWER MAINS SHALL BE D.I.P. OR P.V.C. UNLESS OTHERWISE NOTED.
 - ALL MANHOLES SHALL BE 4'-0" INSIDE DIAMETER UNLESS OTHERWISE NOTED.
 - FORCE MAINS SHALL BE D.I.P. ONLY.
 - MANHOLES SHOWN WITH 12" AND 16" WALLS ARE FOR BRICK MANHOLES ONLY.
 - MANHOLES DESIGNATED W.T. IN PLAN AND PROFILE SHALL HAVE WATERTIGHT FRAME AND COVERS, STANDARD DETAIL G5.52. WHERE WATERTIGHT MANHOLE FRAME AND COVER IS USED, SET TOP OF FRAME 1'-6" ABOVE FINISHED GRADE UNLESS OTHERWISE NOTED ON THE DRAWINGS.
 - HOUSE(S) WITH THE SYMBOL "C.N.S." INDICATES THAT CELLAR CANNOT BE SERVED.
 - THE PROPOSED PRIVATE 1-1/4" LOW PRESSURE SEWER SHALL BE CONSTRUCTED UNDER A COUNTY PLUMBING PERMIT. THE PIPE MATERIAL SHALL COMPLY WITH THE NATIONAL STANDARD PLUMBING CODE.
 - MANHOLE SMH-21 SHALL BE BUILT OVER THE EXISTING SEWER, STANDARD DETAIL G5.14. DETAIL G5.14.

SEDIMENT CONTROL MEASURES WILL BE IMPLEMENTED IN ACCORDANCE WITH SECTION 219 OF THE SPECIFICATIONS AND WITH SITE DEVELOPMENT PLAN SDP-02.

THIS DEVELOPMENT IS APPROVED FOR SOIL EROSION AND SEDIMENT CONTROL BY THE HOWARD COUNTY SOIL CONSERVATION DISTRICT.

John R. Roberts 10/23/02 DATE

REVIEWED FOR HOWARD COUNTY SOIL CONSERVATION DISTRICT AND MEETS TECHNICAL REQUIREMENTS.

Jim Myers 10/23/02 DATE

<p>DEPARTMENT OF PUBLIC WORKS HOWARD COUNTY, MARYLAND</p> <p><i>Rita B...</i> 10-17-02 DATE</p>	<p>DEPARTMENT OF PLANNING & ZONING HOWARD COUNTY, MARYLAND</p> <p><i>...</i> 4/1/02 DATE</p>	<p>FREDERICK WARD ASSOCIATES, INC. ENGINEERS ARCHITECTS SURVEYORS 7125 Riverwood Drive Columbia, Maryland 21046-2354 Phone: 410-290-9550 Fax: 410-720-6226 Bel Air, Maryland Columbia, Maryland Warrenton, Virginia</p>
---	--	--

DES: EB			
DRN: CLY			
CHK: RV			
DATE: OCT. 7, 2002			
BY NO.	K.C.I. 1	ASBUILT DATA ADDED TO PLAN	04/21/03
REVISION			

PUBLIC SEWER PLAN AND PROFILES	WHITEHEAD PROPERTY LOTS 1-4 AND OPEN SPACE LOT 5 CONTRACT NO. 14-4057-D
SCALE AS SHOWN	SHEET 1 OF 1
TAX MAP #37 GRID #12 1ST ELECTION DISTRICT	PARCEL: 533 DEED REF.: L5195 F.569 HOWARD COUNTY, MARYLAND