

SHEET INDEX	
1	TITLE SHEET
2	PLAN OF WATER AND SEWER MAINS
3	PROFILES OF WATER AND SEWER MAINS

# WATER AND SEWER EXTENSIONS

# DORSEY WOODS

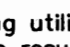
## PARCEL A

## 6th ELECTION DISTRICT

## HOWARD COUNTY, MARYLAND

## CONTRACT NO. 24-4052-D

### GENERAL NOTES

- Approximate location of existing mains are shown. The contractor shall take all necessary precautions to protect existing mains and services and maintain uninterrupted service. Any damage incurred shall be repaired immediately to the satisfaction of the Engineer at the Contractor's expense.
- All horizontal controls are based on Maryland State Coordinates, NAD 83/91.
- All vertical controls are based on NAVD 88.
- All pipe elevations shown are invert elevations unless otherwise noted on the plans.
- Clear all utilities by a minimum of 12 inches. Clear all poles by 5'-0" minimum or tunnel as required unless otherwise noted. The owner has contacted the utility companies and has made arrangements for bracing of poles as shown on the drawings. In the event the contractor's work requires the bracing of additional poles, any cost incurred by the owner for the bracing of additional poles or damages shall be deducted from monies owed the contractor. The contractor shall coordinate with the utility companies to schedule the bracing of the poles.
- For details not shown on the drawings, and for materials and construction methods, use Howard County Design Manual, Volume IV, Standard Specifications and Detail for Construction (Latest Edition). The contractor shall have a copy of Volume IV on the job.
- Where test pits have been made on existing utilities, they are noted by the symbol  at the location of the test pit. A note or notes containing the results of the test pit or pits is included on the drawings. Existing utilities in the vicinity of the proposed work for which test pits have not been dug shall be located by the contractor two weeks in advance of construction operations at his own expense.
- The contractor shall notify the following utility companies or agencies at least five working days before starting work shown on these plans:

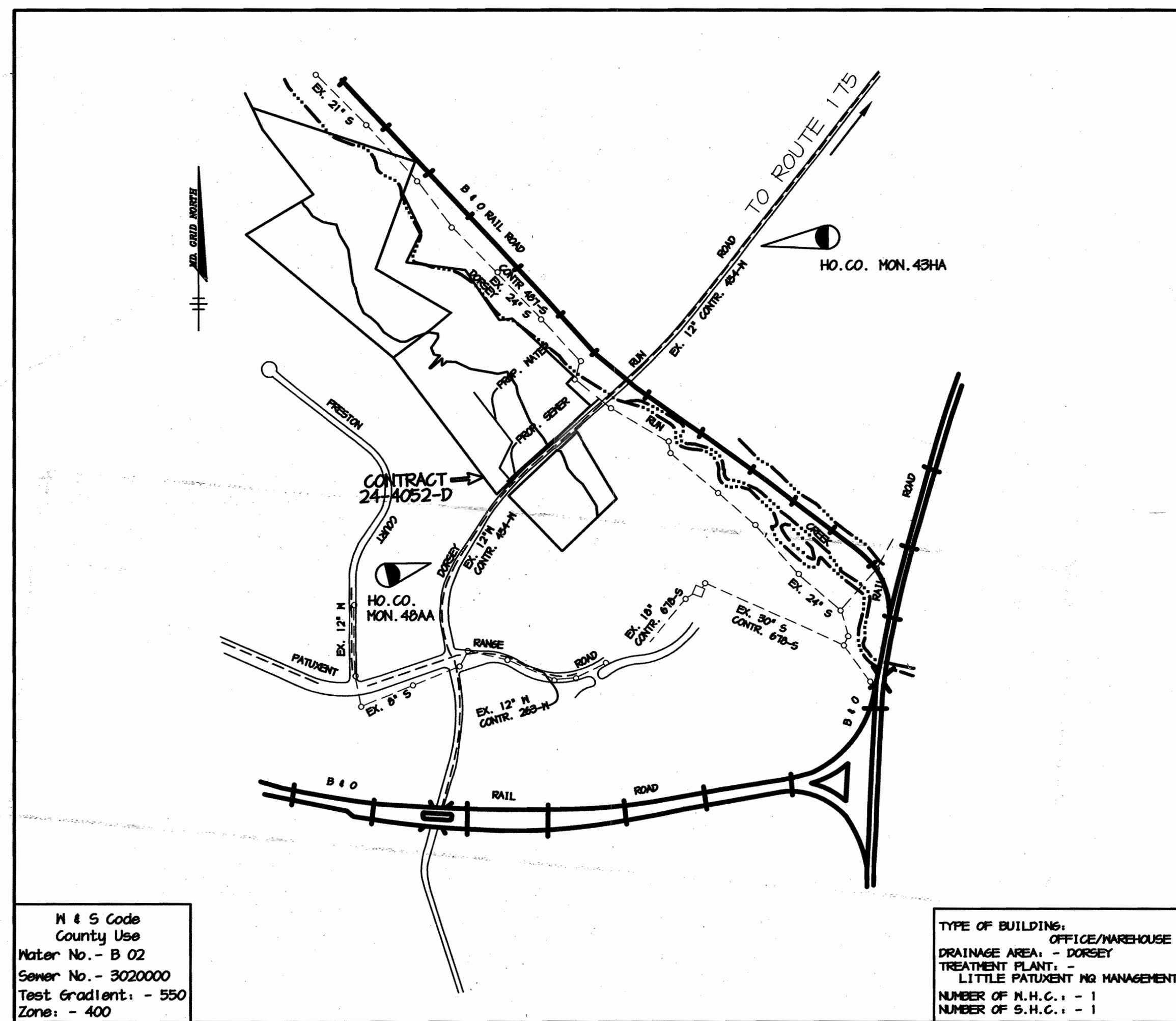
AT&T	1-800-252-1133
BGE (Contractor Services)	410-850-4620
BGE (Underground Damage Control)	410-787-9068
Bureau of Utilities	410-313-4900
Colonial Pipeline Co.	410-795-1390
Miss Utility	1-800-257-7777
State Highway Administration	410-531-5533
Verizon	1-800-743-0033 / 410-224-9210
- Trees and shrubs are to be protected from damage to the maximum extent. Trees and shrubs located within the construction strip are not to be removed or damaged by the contractor.
- The contractor shall remove trees, stumps and roots along the line of excavation. Payment for such removal shall be included in the unit price bid for construction of the main.
- The contractor shall notify the Bureau of Highways, Howard County, at 410-313-7450 at least five working days before open cutting or boring/jacking of any County road for laying water/sewer mains or house connections. The approval of these drawings will constitute compliance with DPW requirements per Section 18.114(c) of the Howard County Code.

### WATER NOTES

- All water mains shall be D.I.P. Class 52 unless otherwise noted.
- Tops of all water mains shall have a minimum of 3'-6" of cover unless otherwise noted.
- Valves adjacent to tees shall be strapped to tees.
- All fittings shall be buttressed or anchored with concrete in accordance with the Standard Details unless otherwise provided for on the drawings.
- Fire hydrants shall be set to the bury line elevations shown on the drawings. All fire hydrants shall be installed in accordance with Standard Details. The soil around the fire hydrant shall be compacted in accordance with Section 1000 and 1005 of the Standard Specifications.
- The contractor shall not operate any water main valves on the existing water system.

### SEWER NOTES

- All sewer mains shall be D.I.P. and P.V.C. unless otherwise noted.
- All manholes shall be 4'-0" inside diameter unless otherwise noted.
- Force mains shall be D.I.P. only.
- Manholes shown with 12" and 16" walls are for brick manholes only.
- Manholes designated W.T. in plan and profile shall have watertight frame and covers, Standard Detail G5.52. Where watertight manhole frames and covers is used, set top of frame 1'-6" above finished grade unless otherwise noted on the drawings.
- House(s) with the symbol "C.N.S." indicates that cellar cannot be served.



VICINITY MAP  
SCALE: 1" = 600'

### QUANTITIES

ITEMS	QUANTITIES ESTIMATED	AS-BUILT		
		QUANTITIES	TYPE	MANUFACTURER / SUPPLIER
8" WATER	903 L.F.	903 L.F.	DIP CL52	U.S. PIPE
6" WATER	20 EA.	20 L.F.	DIP CL52	U.S. PIPE
12"x8" TSV	1 EA.	1 TS		FORD
1" NHC	10 L.F.			
8" SEWER	633 L.F.	633 L.F.	PVC	DIAMOND PLASTICS
4" DIA. MANHOLES	5 EA.	5 EA.	PRECAST	HANSON PIPE
FIRE HYDRANT	2 EA.	2 EA.		KENNEDY VALVE

NAME OF UTILITY CONTRACTOR:

Sediment control measures for this contract will be implemented in accordance with Section 219 of the Specifications and as shown on SDP-02-102

CHECKBOX

AS-BUILT DATE

SURVEY AND DRAFTING DIVISION

Review for Howard Soil Conservation District and meets technical requirements.

*Jim Meyer* 9/13/02  
NATURAL RESOURCES DIVISION SERVICE DATE

This plan is approved for soil erosion and sediment control by the Howard Soil Conservation District.

*John P. Robinson* 9/13/02  
HOWARD SOIL CONSERVATION DISTRICT DATE

### BENCH MARKS

HO. CO. SURVEY CONTROL STATION: 43HA  
N 540,761.716 E 1,373,837.365  
ELEVATION: 224.907

HO. CO. SURVEY CONTROL STATION: 48AA  
N 534,314.400 E 1,371,534.251  
ELEVATION: 240.809

DEPARTMENT OF PUBLIC WORKS HOWARD COUNTY, MARYLAND	DEPARTMENT OF PLANNING & ZONING HOWARD COUNTY, MARYLAND
<i>Patton Harris Rust &amp; Associates, pc</i> Engineers, Surveyors, Planners, Landscape Architects. 8818 Centre Park Drive Columbia, MD 21045 T 410.997.8900 F 410.997.9282 01284/WS-1.DWG	<i>Christopher J. Reid</i> 9/10/02 CHIEF, DEVELOPMENT ENGINEERING DIVISION DATE

STATE OF MARYLAND  
REGISTERED PROFESSIONAL ENGINEER  
CHRISTOPHER J. REID #19949

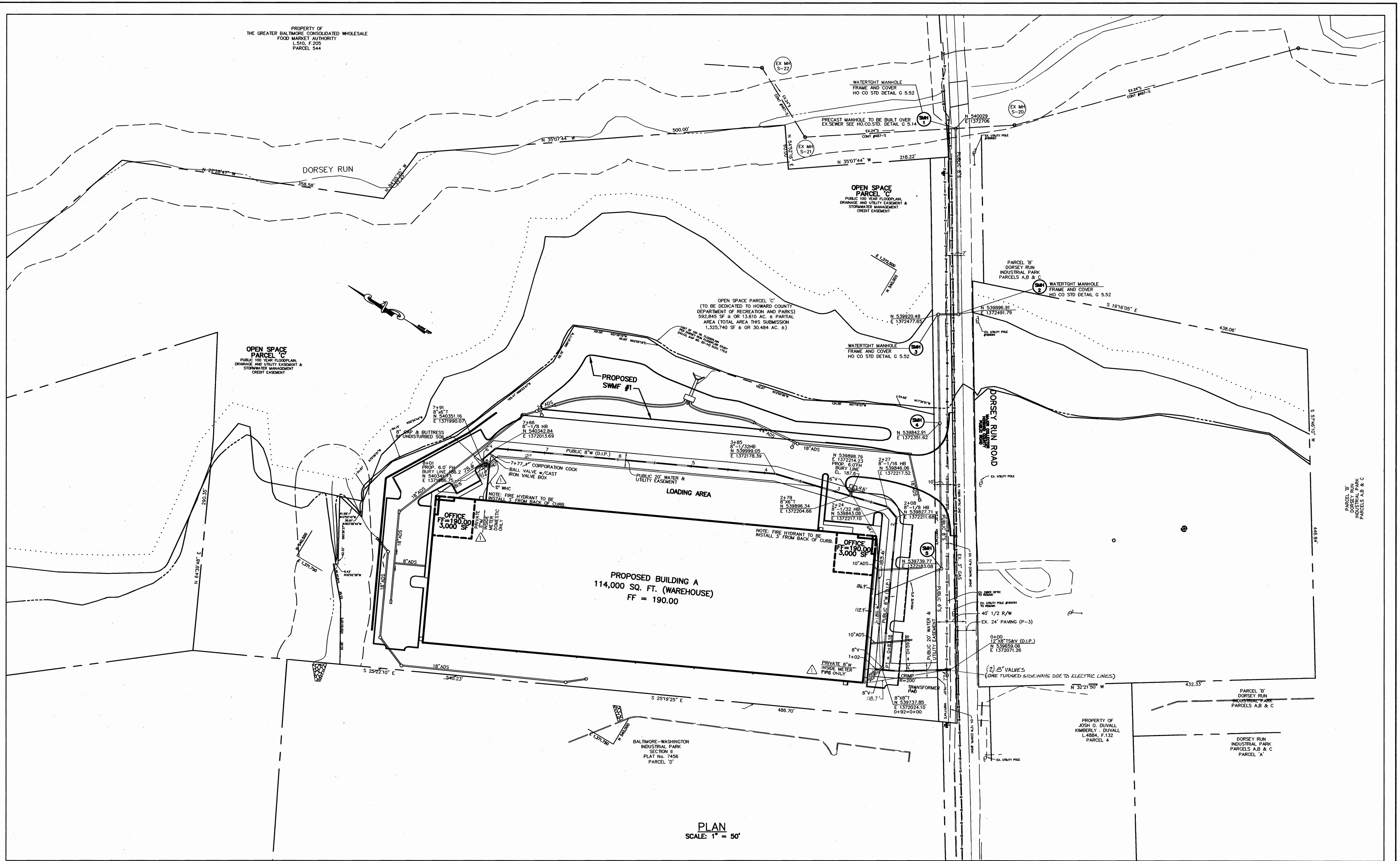
DES: C.J.R.			
DRN: DAM			
CHK: KCI	AS-BUILT DATA ADDED TO PLAN	10/16/02	
BY: WAD	REVISED QUANTITIES - 1" NHC TO 2" NHC	9/20/02	
DATE: 8/22/02			
REVISION			

TITLE SHEET


600' SCALE MAP NO. 43 & 48 BLOCK NO. 20 & 2

DORSEY WOODS  
PARCEL A  
6th ELECTION DISTRICT  
HOWARD COUNTY, MARYLAND  
CONTRACT 24-4052-D

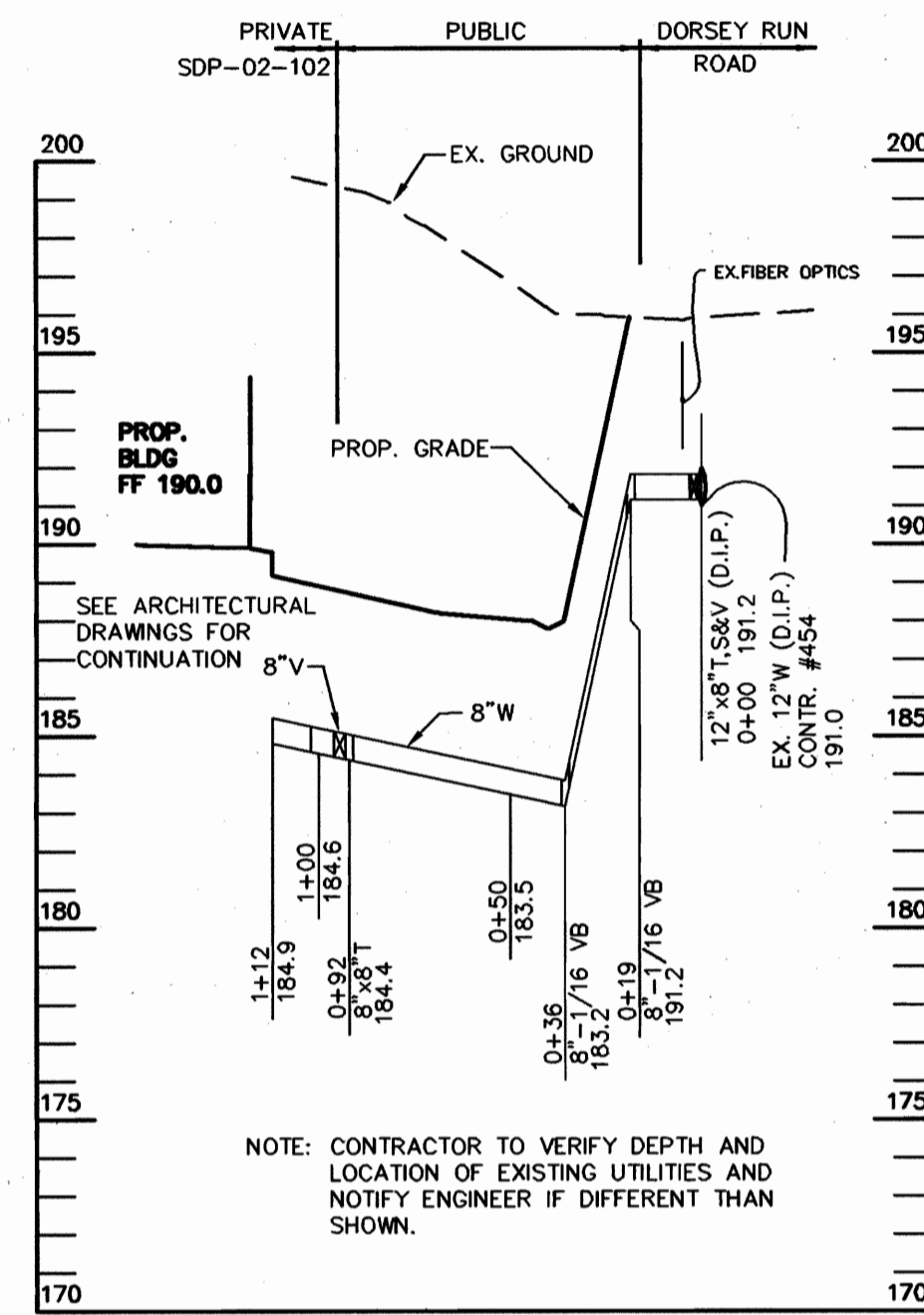
SCALE AS SHOWN  
SHEET 1 OF 3



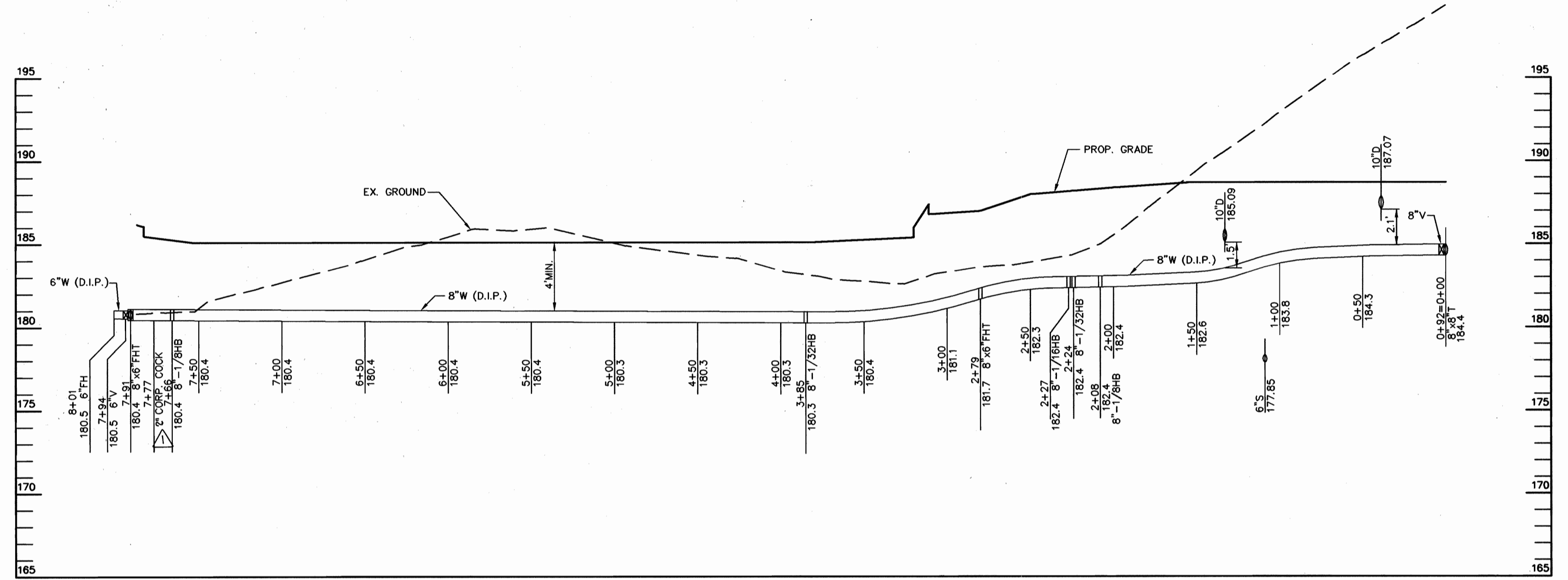
PLAN  
SCALE: 1" = 50'

DEPARTMENT OF PUBLIC WORKS HOWARD COUNTY, MARYLAND  <i>John J. ...</i> CHIEF, BUREAU OF UTILITIES 7-6-02 DATE	DEPARTMENT OF PLANNING & ZONING HOWARD COUNTY, MARYLAND  <i>Christopher J. Reid</i> CHIEF, DEVELOPMENT ENGINEERING DIVISION 8/22/02 DATE	Patton Harris Rust & Associates, pc Engineers, Surveyors, Planners, Landscape Architects. <b>PHRA</b> 8818 Centre Park Drive Columbia, MD 21045 T 410.997.8900 F 410.997.9282	 CHRISTOPHER J. REID #19949	DES: C.J.R. DRN: DAM CHK: KCI / <i>ASBUILT DATA ADDED TO PLAN</i> DATE: 8/22/02 BY NO. REVISION DATE	PLAN OF WATER AND SEWER MAINS  600' SCALE MAP NO. 43 & 48 BLOCK NO. 20 & 2	DORSEY WOODS PARCEL A 6th ELECTION DISTRICT HOWARD COUNTY, MARYLAND CONTRACT 24-4052-D  SCALE AS SHOWN  SHEET 2 OF 3
---	--	---	---	--	---	---

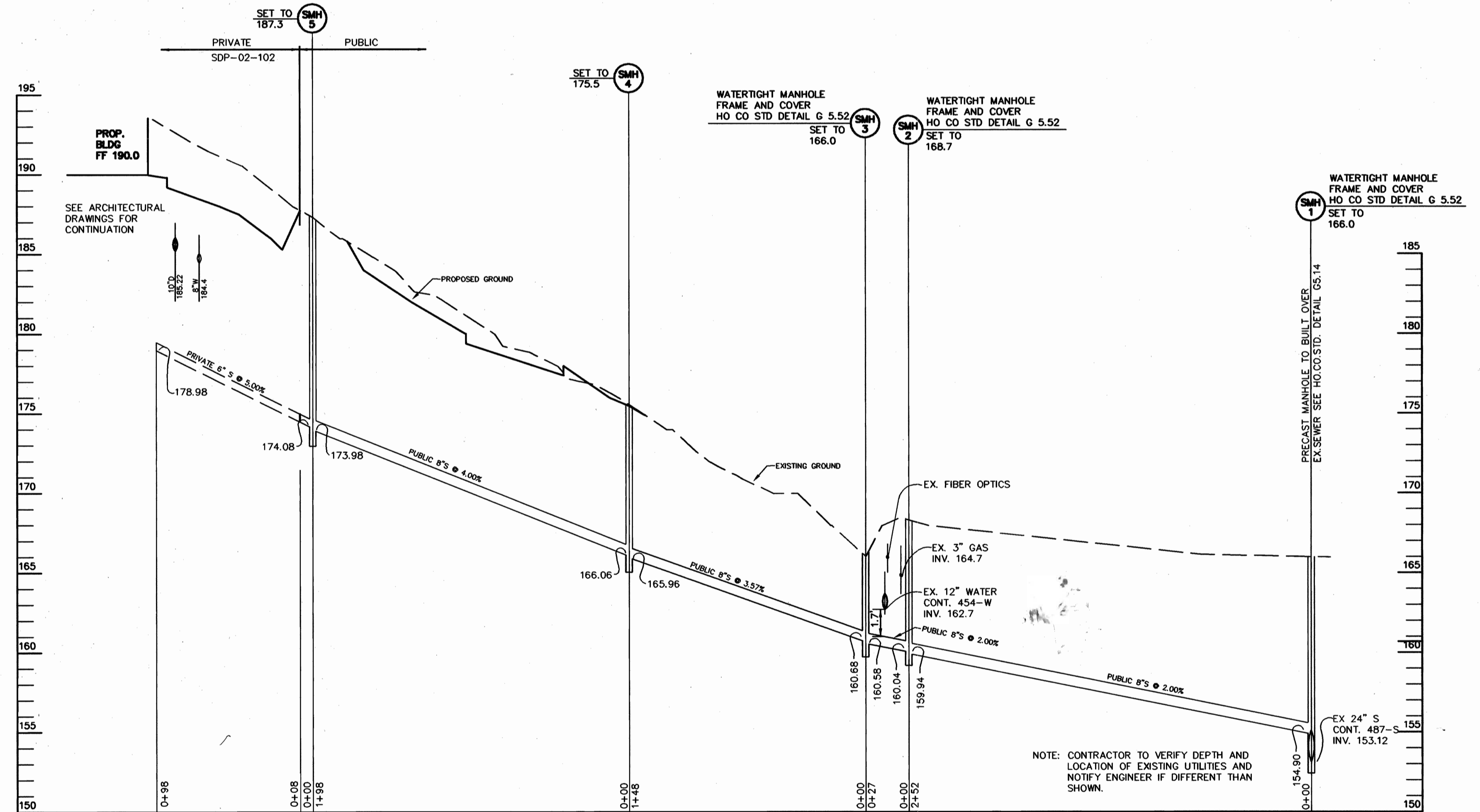
Project:012841-01EngPlans\W52.dwg, Layout:1, 08/22/02 02:25:32 PM, HP1050C(36).pc3, Arch D - 24 x 36 in. (landscape), 1:1



**WATER PROFILE**  
 SCALE:  
 HOR. - 1"=50'  
 VERT. - 1"=5'



**WATER PROFILE**  
 SCALE:  
 HOR. - 1"=50'  
 VERT. - 1"=5'



**SEWER PROFILE**  
 SCALE:  
 HOR. - 1"=50'  
 VERT. - 1"=5'

DEPARTMENT OF PUBLIC WORKS  
 HOWARD COUNTY, MARYLAND

DEPARTMENT OF PLANNING & ZONING  
 HOWARD COUNTY, MARYLAND

Patton Harris Rust & Associates, pc  
 Engineers, Surveyors, Planners, Landscape Architects.  
**PHRA**  
 8818 Centre Park Drive  
 Columbia, MD 21045  
 T 410.997.8900  
 F 410.997.9282



CHRISTOPHER J. REID #19949

DES:	C.J.R.
DRN:	DAM
CHK:	KCI
DATE:	8/22/02
BY:	NO.
REVISION:	DATE
	10/16/03
	5-20-08
	AS BUILT DATA ADDED TO PLAN
	CHANGED 12" WMC TO 8" WMC

**PROFILES OF  
 WATER AND SEWER MAINS**

600' SCALE MAP NO. 43 & 48. BLOCK NO. 20 & 2

**DORSEY WOODS  
 PARCEL A  
 6th ELECTION DISTRICT  
 HOWARD COUNTY, MARYLAND  
 CONTRACT 24-4052-D**

SCALE  
 AS  
 SHOWN

SHEET  
 3 OF 3

*R.H.R.*  
 CHIEF, BUREAU OF UTILITIES  
 9-6-02  
 DATE

*Christopher J. Reid*  
 CHIEF, DEVELOPMENT ENGINEERING DIVISION  
 9/16/02  
 DATE